



Full wwPDB X-ray Structure Validation Report ⓘ

Oct 19, 2024 – 05:23 PM EDT

PDB ID : 2ZPQ
Title : Crystal structure of anionic trypsin isoform 1 from chum salmon
Authors : Iyaguchi, D.; Toyota, E.
Deposited on : 2008-07-28
Resolution : 1.90 Å(reported)

This is a Full wwPDB X-ray Structure Validation Report for a publicly released PDB entry.

We welcome your comments at validation@mail.wwpdb.org

A user guide is available at

<https://www.wwpdb.org/validation/2017/XrayValidationReportHelp>

with specific help available everywhere you see the ⓘ symbol.

The types of validation reports are described at

<http://www.wwpdb.org/validation/2017/FAQs#types>.

The following versions of software and data (see [references ⓘ](#)) were used in the production of this report:

MolProbity : 4.02b-467
Mogul : 2022.3.0, CSD as543be (2022)
Xtriage (Phenix) : 1.20.1
EDS : 3.0
Percentile statistics : 20231227.v01 (using entries in the PDB archive December 27th 2023)
CCP4 : 9.0.003 (Gargrove)
Density-Fitness : 1.0.11
Ideal geometry (proteins) : Engh & Huber (2001)
Ideal geometry (DNA, RNA) : Parkinson et al. (1996)
Validation Pipeline (wwPDB-VP) : 2.39

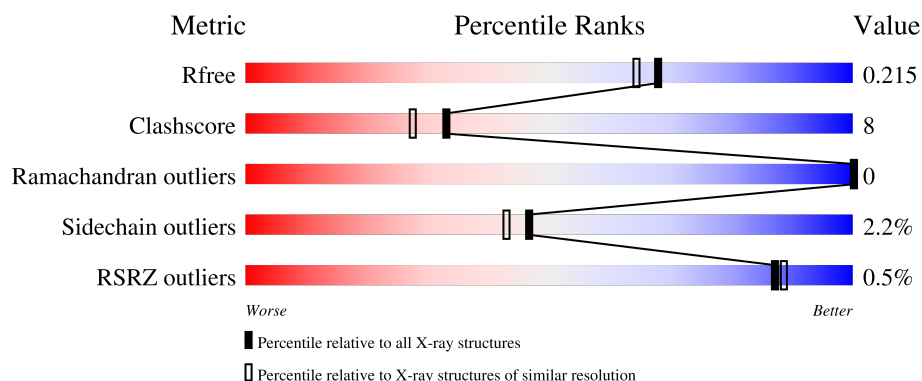
1 Overall quality at a glance

The following experimental techniques were used to determine the structure:

X-RAY DIFFRACTION



The reported resolution of this entry is 1.90 Å.

Percentile scores (ranging between 0-100) for global validation metrics of the entry are shown in the following graphic. The table shows the number of entries on which the scores are based.



Metric	Whole archive (#Entries)	Similar resolution (#Entries, resolution range(Å))
R_{free}	164625	7293 (1.90-1.90)
Clashscore	180529	8090 (1.90-1.90)
Ramachandran outliers	177936	8022 (1.90-1.90)
Sidechain outliers	177891	8022 (1.90-1.90)
RSRZ outliers	164620	7292 (1.90-1.90)

The table below summarises the geometric issues observed across the polymeric chains and their fit to the electron density. The red, orange, yellow and green segments of the lower bar indicate the fraction of residues that contain outliers for ≥ 3 , 2, 1 and 0 types of geometric quality criteria respectively. A grey segment represents the fraction of residues that are not modelled. The numeric value for each fraction is indicated below the corresponding segment, with a dot representing fractions $\leq 5\%$. The upper red bar (where present) indicates the fraction of residues that have poor fit to the electron density. The numeric value is given above the bar.

Mol	Chain	Length	Quality of chain
1	A	222	 89% 10% .
1	B	222	 87% 10% ..

The following table lists non-polymeric compounds, carbohydrate monomers and non-standard residues in protein, DNA, RNA chains that are outliers for geometric or electron-density-fit criteria:

Mol	Type	Chain	Res	Chirality	Geometry	Clashes	Electron density
4	BEN	A	1001	-	X	-	-
4	BEN	B	1002	-	X	-	-

2 Entry composition [i](#)

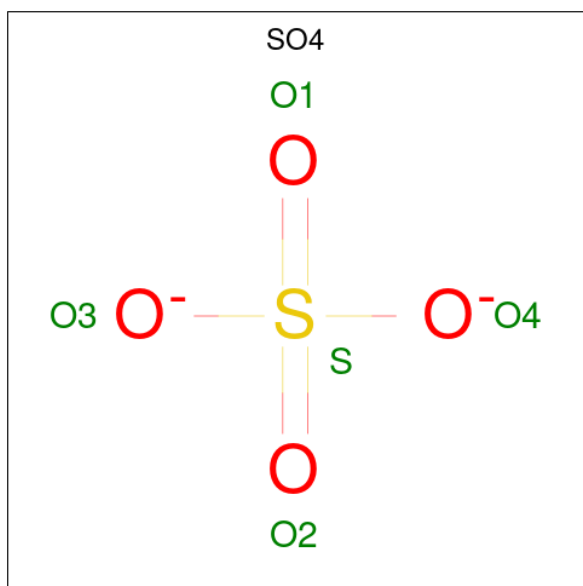
There are 5 unique types of molecules in this entry. The entry contains 3616 atoms, of which 0 are hydrogens and 0 are deuteriums.

In the tables below, the ZeroOcc column contains the number of atoms modelled with zero occupancy, the AltConf column contains the number of residues with at least one atom in alternate conformation and the Trace column contains the number of residues modelled with at most 2 atoms.

- Molecule 1 is a protein called Anionic trypsin.

Mol	Chain	Residues	Atoms					ZeroOcc	AltConf	Trace
1	A	220	Total	C	N	O	S	0	0	0
			1647	1027	279	323	18			
1	B	220	Total	C	N	O	S	0	0	0
			1647	1027	279	323	18			

- Molecule 2 is SULFATE ION (three-letter code: SO4) (formula: O₄S).

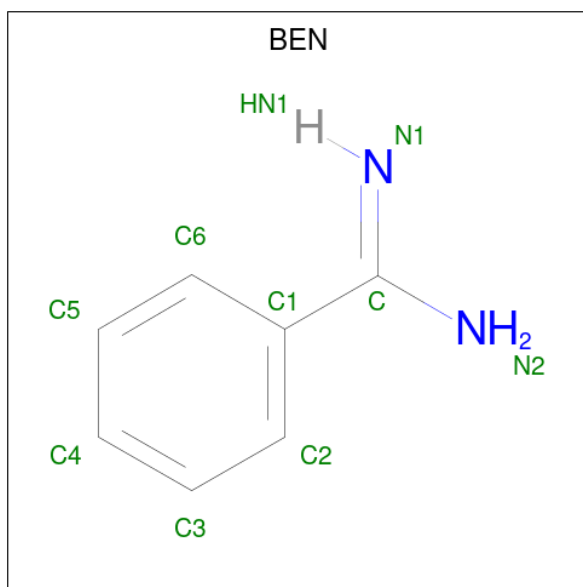


Mol	Chain	Residues	Atoms			ZeroOcc	AltConf
2	A	1	Total	O	S	0	0
			5	4	1		
2	A	1	Total	O	S	0	0
			5	4	1		

- Molecule 3 is CALCIUM ION (three-letter code: CA) (formula: Ca).

Mol	Chain	Residues	Atoms	ZeroOcc	AltConf
3	A	1	Total Ca 1 1	0	0
3	B	1	Total Ca 1 1	0	0

- Molecule 4 is BENZAMIDINE (three-letter code: BEN) (formula: C₇H₈N₂).



Mol	Chain	Residues	Atoms	ZeroOcc	AltConf
4	A	1	Total C N 9 7 2	0	0
4	B	1	Total C N 9 7 2	0	0

- Molecule 5 is water.

Mol	Chain	Residues	Atoms	ZeroOcc	AltConf
5	A	141	Total O 141 141	0	0
5	B	151	Total O 151 151	0	0

3 Residue-property plots [i](#)


These plots are drawn for all protein, RNA, DNA and oligosaccharide chains in the entry. The first graphic for a chain summarises the proportions of the various outlier classes displayed in the second graphic. The second graphic shows the sequence view annotated by issues in geometry and electron density. Residues are color-coded according to the number of geometric quality criteria for which they contain at least one outlier: green = 0, yellow = 1, orange = 2 and red = 3 or more. A red dot above a residue indicates a poor fit to the electron density ($RSRZ > 2$). Stretches of 2 or more consecutive residues without any outlier are shown as a green connector. Residues present in the sample, but not in the model, are shown in grey.

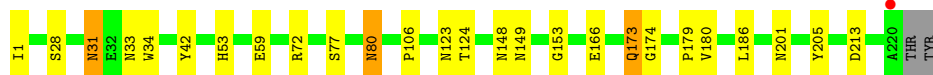
- Molecule 1: Anionic trypsin

Chain A:  89% 10% •



- Molecule 1: Anionic trypsin

Chain B:  87% 10% ••



4 Data and refinement statistics

Property	Value	Source
Space group	P 21 21 21	Depositor
Cell constants a, b, c, α , β , γ	65.02Å 80.56Å 80.82Å 90.00° 90.00° 90.00°	Depositor
Resolution (Å)	20.00 – 1.90 20.00 – 1.90	Depositor EDS
% Data completeness (in resolution range)	(Not available) (20.00-1.90) 97.1 (20.00-1.90)	Depositor EDS
R_{merge}	0.08	Depositor
R_{sym}	(Not available)	Depositor
$\langle I/\sigma(I) \rangle$ ¹	3.82 (at 1.89Å)	Xtriage
Refinement program	CNS 1.1	Depositor
R, R_{free}	0.193 , 0.222 0.186 , 0.215	Depositor DCC
R_{free} test set	3329 reflections (10.04%)	wwPDB-VP
Wilson B-factor (Å ²)	17.6	Xtriage
Anisotropy	0.574	Xtriage
Bulk solvent k_{sol} (e/Å ³), B_{sol} (Å ²)	0.41 , 41.1	EDS
L-test for twinning ²	$\langle L \rangle = 0.49$, $\langle L^2 \rangle = 0.32$	Xtriage
Estimated twinning fraction	0.000 for -h,l,k	Xtriage
F_o, F_c correlation	0.95	EDS
Total number of atoms	3616	wwPDB-VP
Average B, all atoms (Å ²)	17.0	wwPDB-VP

Xtriage's analysis on translational NCS is as follows: *The analyses of the Patterson function reveals a significant off-origin peak that is 65.94 % of the origin peak, indicating pseudo-translational symmetry. The chance of finding a peak of this or larger height randomly in a structure without pseudo-translational symmetry is equal to 6.5424e-06. The detected translational NCS is most likely also responsible for the elevated intensity ratio.*

¹ Intensities estimated from amplitudes.

² Theoretical values of $\langle |L| \rangle$, $\langle L^2 \rangle$ for acentric reflections are 0.5, 0.333 respectively for untwinned datasets, and 0.375, 0.2 for perfectly twinned datasets.

5 Model quality

5.1 Standard geometry

Bond lengths and bond angles in the following residue types are not validated in this section: CA, SO4, BEN

The Z score for a bond length (or angle) is the number of standard deviations the observed value is removed from the expected value. A bond length (or angle) with $|Z| > 5$ is considered an outlier worth inspection. RMSZ is the root-mean-square of all Z scores of the bond lengths (or angles).

Mol	Chain	Bond lengths		Bond angles	
		RMSZ	$\# Z > 5$	RMSZ	$\# Z > 5$
1	A	0.29	0/1686	0.63	0/2293
1	B	0.29	0/1686	0.63	0/2293
All	All	0.29	0/3372	0.63	0/4586

There are no bond length outliers.

There are no bond angle outliers.

There are no chirality outliers.

There are no planarity outliers.

5.2 Too-close contacts

In the following table, the Non-H and H(model) columns list the number of non-hydrogen atoms and hydrogen atoms in the chain respectively. The H(added) column lists the number of hydrogen atoms added and optimized by MolProbity. The Clashes column lists the number of clashes within the asymmetric unit, whereas Symm-Clashes lists symmetry-related clashes.

Mol	Chain	Non-H	H(model)	H(added)	Clashes	Symm-Clashes
1	A	1647	0	1564	21	0
1	B	1647	0	1564	29	0
2	A	10	0	0	0	0
3	A	1	0	0	0	0
3	B	1	0	0	0	0
4	A	9	0	7	0	0
4	B	9	0	7	0	0
5	A	141	0	0	4	4
5	B	151	0	0	5	1
All	All	3616	0	3142	50	4

The all-atom clashscore is defined as the number of clashes found per 1000 atoms (including

hydrogen atoms). The all-atom clashscore for this structure is 8.

All (50) close contacts within the same asymmetric unit are listed below, sorted by their clash magnitude.

Atom-1	Atom-2	Interatomic distance (Å)	Clash overlap (Å)
1:A:166:GLU:HG2	5:A:3130:HOH:O	1.18	1.31
1:B:174:GLY:N	5:B:3126:HOH:O	1.99	0.90
1:B:173:GLN:HA	5:B:3126:HOH:O	1.82	0.79
1:A:166:GLU:CG	5:A:3130:HOH:O	1.92	0.77
1:B:80:ASN:H	1:B:80:ASN:HD22	1.33	0.76
1:A:80:ASN:H	1:A:80:ASN:HD22	1.33	0.73
1:B:148:ASN:HD21	1:B:153:GLY:H	1.36	0.73
1:B:31:ASN:ND2	1:B:34:TRP:H	1.91	0.69
1:B:28:SER:OG	1:B:179:PRO:HB3	1.94	0.68
1:A:166:GLU:CD	5:A:3130:HOH:O	2.27	0.67
1:B:31:ASN:HD22	1:B:31:ASN:C	1.97	0.67
1:A:148:ASN:HD21	1:A:153:GLY:H	1.44	0.65
1:A:28:SER:OG	1:A:179:PRO:HB3	1.98	0.63
1:B:148:ASN:ND2	1:B:153:GLY:H	1.97	0.62
1:B:31:ASN:ND2	1:B:33:ASN:H	1.98	0.61
1:B:173:GLN:CA	5:B:3126:HOH:O	2.45	0.59
1:B:173:GLN:HE21	1:B:173:GLN:H	1.52	0.58
1:A:148:ASN:ND2	1:A:153:GLY:H	2.02	0.57
1:A:80:ASN:H	1:A:80:ASN:ND2	2.03	0.56
1:A:80:ASN:HD22	1:A:80:ASN:N	1.98	0.54
1:B:31:ASN:HD22	1:B:33:ASN:H	1.54	0.54
1:B:80:ASN:HD22	1:B:80:ASN:N	1.98	0.53
1:B:80:ASN:H	1:B:80:ASN:ND2	2.05	0.50
1:B:173:GLN:H	1:B:173:GLN:NE2	2.09	0.50
1:A:43:LYS:HD3	1:A:46:VAL:HG12	1.93	0.50
1:B:106:PRO:HD3	1:B:186:LEU:O	2.11	0.49
1:A:77:SER:HB3	1:A:80:ASN:HD21	1.78	0.49
1:A:43:LYS:HB3	1:A:46:VAL:CG1	2.45	0.47
1:B:31:ASN:HD21	1:B:34:TRP:N	2.14	0.46
1:B:77:SER:CB	1:B:80:ASN:HD21	2.28	0.45
1:B:1:ILE:O	1:B:124:THR:HA	2.16	0.45
1:A:149:ASN:ND2	5:A:3037:HOH:O	2.50	0.45
1:A:77:SER:CB	1:A:80:ASN:HD21	2.30	0.44
1:A:190:VAL:HA	1:A:205:TYR:CD2	2.52	0.44
1:B:53:HIS:HB3	1:B:59:GLU:OE2	2.17	0.44
1:B:31:ASN:HD21	1:B:34:TRP:H	1.64	0.44
1:A:106:PRO:HD3	1:A:186:LEU:O	2.18	0.44
1:B:42:TYR:CB	1:B:72:ARG:HD3	2.48	0.43

Continued on next page...

Continued from previous page...

Atom-1	Atom-2	Interatomic distance (Å)	Clash overlap (Å)
1:A:158:ALA:HA	1:A:210:ILE:HD11	2.00	0.43
1:A:42:TYR:CB	1:A:72:ARG:HD3	2.48	0.43
1:B:80:ASN:N	1:B:80:ASN:ND2	2.65	0.43
1:B:31:ASN:ND2	1:B:31:ASN:C	2.69	0.42
1:A:54:ASN:HA	1:A:132:ASN:O	2.19	0.42
1:A:194:TYR:HB2	1:A:201:ASN:HD22	1.84	0.42
1:B:149:ASN:ND2	5:B:3201:HOH:O	2.53	0.42
1:B:77:SER:HB3	1:B:80:ASN:HD21	1.86	0.41
1:A:42:TYR:HB2	1:A:72:ARG:HD3	2.03	0.41
1:B:42:TYR:HB2	1:B:72:ARG:HD3	2.04	0.40
1:B:180:VAL:HG21	1:B:205:TYR:CD2	2.57	0.40
1:B:201:ASN:ND2	5:B:3217:HOH:O	2.54	0.40

All (4) symmetry-related close contacts are listed below. The label for Atom-2 includes the symmetry operator and encoded unit-cell translations to be applied.

Atom-1	Atom-2	Interatomic distance (Å)	Clash overlap (Å)
5:A:3136:HOH:O	5:B:3272:HOH:O[3_555]	0.14	2.06
5:A:3139:HOH:O	5:A:3141:HOH:O[4_455]	0.26	1.94
5:A:3131:HOH:O	5:A:3133:HOH:O[4_455]	0.53	1.67
5:A:3128:HOH:O	5:A:3129:HOH:O[4_455]	0.58	1.62

5.3 Torsion angles [i](#)

5.3.1 Protein backbone [i](#)

In the following table, the Percentiles column shows the percent Ramachandran outliers of the chain as a percentile score with respect to all X-ray entries followed by that with respect to entries of similar resolution.

The Analysed column shows the number of residues for which the backbone conformation was analysed, and the total number of residues.

Mol	Chain	Analysed	Favoured	Allowed	Outliers	Percentiles	
1	A	218/222 (98%)	210 (96%)	8 (4%)	0	100	100
1	B	218/222 (98%)	208 (95%)	10 (5%)	0	100	100
All	All	436/444 (98%)	418 (96%)	18 (4%)	0	100	100

There are no Ramachandran outliers to report.

5.3.2 Protein sidechains ⓘ

In the following table, the Percentiles column shows the percent sidechain outliers of the chain as a percentile score with respect to all X-ray entries followed by that with respect to entries of similar resolution.

The Analysed column shows the number of residues for which the sidechain conformation was analysed, and the total number of residues.

Mol	Chain	Analysed	Rotameric	Outliers	Percentiles	
1	A	184/186 (99%)	182 (99%)	2 (1%)	70	71
1	B	184/186 (99%)	178 (97%)	6 (3%)	33	26
All	All	368/372 (99%)	360 (98%)	8 (2%)	47	43

All (8) residues with a non-rotameric sidechain are listed below:

Mol	Chain	Res	Type
1	A	45	ARG
1	A	80	ASN
1	B	31	ASN
1	B	80	ASN
1	B	123	ASN
1	B	166	GLU
1	B	173	GLN
1	B	213	ASP

Sometimes sidechains can be flipped to improve hydrogen bonding and reduce clashes. All (20) such sidechains are listed below:

Mol	Chain	Res	Type
1	A	12	GLN
1	A	75	ASN
1	A	80	ASN
1	A	148	ASN
1	A	149	ASN
1	A	187	GLN
1	A	201	ASN
1	A	212	ASN
1	B	12	GLN
1	B	31	ASN
1	B	75	ASN
1	B	80	ASN
1	B	123	ASN
1	B	148	ASN

Continued on next page...

Continued from previous page...

Mol	Chain	Res	Type
1	B	149	ASN
1	B	173	GLN
1	B	183	ASN
1	B	187	GLN
1	B	201	ASN
1	B	212	ASN

5.3.3 RNA ⓘ

There are no RNA molecules in this entry.

5.4 Non-standard residues in protein, DNA, RNA chains ⓘ

There are no non-standard protein/DNA/RNA residues in this entry.

5.5 Carbohydrates ⓘ

There are no oligosaccharides in this entry.

5.6 Ligand geometry ⓘ

Of 6 ligands modelled in this entry, 2 are monoatomic - leaving 4 for Mogul analysis.

In the following table, the Counts columns list the number of bonds (or angles) for which Mogul statistics could be retrieved, the number of bonds (or angles) that are observed in the model and the number of bonds (or angles) that are defined in the Chemical Component Dictionary. The Link column lists molecule types, if any, to which the group is linked. The Z score for a bond length (or angle) is the number of standard deviations the observed value is removed from the expected value. A bond length (or angle) with $|Z| > 2$ is considered an outlier worth inspection. RMSZ is the root-mean-square of all Z scores of the bond lengths (or angles).

Mol	Type	Chain	Res	Link	Bond lengths			Bond angles		
					Counts	RMSZ	$\# Z > 2$	Counts	RMSZ	$\# Z > 2$
4	BEN	A	1001	-	9,9,9	4.36	4 (44%)	7,11,11	3.66	4 (57%)
2	SO4	A	2002	-	4,4,4	0.35	0	6,6,6	0.11	0
4	BEN	B	1002	-	9,9,9	4.41	4 (44%)	7,11,11	3.69	4 (57%)
2	SO4	A	2001	-	4,4,4	0.37	0	6,6,6	0.08	0

In the following table, the Chirals column lists the number of chiral outliers, the number of chiral centers analysed, the number of these observed in the model and the number defined in the

Chemical Component Dictionary. Similar counts are reported in the Torsion and Rings columns.
'-' means no outliers of that kind were identified.

Mol	Type	Chain	Res	Link	Chirals	Torsions	Rings
4	BEN	A	1001	-	-	4/4/4/4	0/1/1/1
4	BEN	B	1002	-	-	4/4/4/4	0/1/1/1

All (8) bond length outliers are listed below:

Mol	Chain	Res	Type	Atoms	Z	Observed(Å)	Ideal(Å)
4	B	1002	BEN	C3-C2	9.60	1.55	1.38
4	A	1001	BEN	C3-C2	9.54	1.55	1.38
4	B	1002	BEN	C5-C4	7.51	1.54	1.38
4	A	1001	BEN	C5-C4	7.45	1.54	1.38
4	B	1002	BEN	C2-C1	2.92	1.43	1.39
4	B	1002	BEN	C6-C1	2.80	1.43	1.39
4	A	1001	BEN	C6-C1	2.78	1.43	1.39
4	A	1001	BEN	C2-C1	2.63	1.43	1.39

All (8) bond angle outliers are listed below:

Mol	Chain	Res	Type	Atoms	Z	Observed(°)	Ideal(°)
4	B	1002	BEN	C3-C2-C1	-5.93	114.53	120.36
4	A	1001	BEN	C3-C2-C1	-5.81	114.65	120.36
4	A	1001	BEN	C4-C5-C6	-4.71	114.42	120.24
4	A	1001	BEN	C5-C6-C1	4.70	124.98	120.36
4	B	1002	BEN	C4-C5-C6	-4.68	114.47	120.24
4	B	1002	BEN	C5-C6-C1	4.67	124.96	120.36
4	A	1001	BEN	C6-C1-C2	3.20	122.64	118.57
4	B	1002	BEN	C6-C1-C2	3.19	122.63	118.57

There are no chirality outliers.

All (8) torsion outliers are listed below:

Mol	Chain	Res	Type	Atoms
4	A	1001	BEN	N2-C-C1-C2
4	A	1001	BEN	N2-C-C1-C6
4	B	1002	BEN	N2-C-C1-C2
4	B	1002	BEN	N2-C-C1-C6
4	A	1001	BEN	N1-C-C1-C2
4	A	1001	BEN	N1-C-C1-C6
4	B	1002	BEN	N1-C-C1-C2
4	B	1002	BEN	N1-C-C1-C6

There are no ring outliers.

No monomer is involved in short contacts.

5.7 Other polymers

There are no such residues in this entry.

5.8 Polymer linkage issues

There are no chain breaks in this entry.

6 Fit of model and data [i](#)

6.1 Protein, DNA and RNA chains [i](#)

In the following table, the column labelled ‘#RSRZ> 2’ contains the number (and percentage) of RSRZ outliers, followed by percent RSRZ outliers for the chain as percentile scores relative to all X-ray entries and entries of similar resolution. The OWAB column contains the minimum, median, 95th percentile and maximum values of the occupancy-weighted average B-factor per residue. The column labelled ‘Q< 0.9’ lists the number of (and percentage) of residues with an average occupancy less than 0.9.

Mol	Chain	Analysed	<RSRZ>	#RSRZ>2	OWAB(Å ²)	Q<0.9
1	A	220/222 (99%)	-0.31	1 (0%) 87 88	11, 16, 24, 33	0
1	B	220/222 (99%)	-0.29	1 (0%) 87 88	12, 16, 24, 32	0
All	All	440/444 (99%)	-0.30	2 (0%) 87 88	11, 16, 24, 33	0

All (2) RSRZ outliers are listed below:

Mol	Chain	Res	Type	RSRZ
1	B	220	ALA	2.8
1	A	220	ALA	2.2

6.2 Non-standard residues in protein, DNA, RNA chains [i](#)

There are no non-standard protein/DNA/RNA residues in this entry.

6.3 Carbohydrates [i](#)

There are no monosaccharides in this entry.

6.4 Ligands [i](#)

In the following table, the Atoms column lists the number of modelled atoms in the group and the number defined in the chemical component dictionary. The B-factors column lists the minimum, median, 95th percentile and maximum values of B factors of atoms in the group. The column labelled ‘Q< 0.9’ lists the number of atoms with occupancy less than 0.9.

Mol	Type	Chain	Res	Atoms	RSCC	RSR	B-factors(Å ²)	Q<0.9
4	BEN	A	1001	9/9	0.89	0.09	16,17,18,18	0
4	BEN	B	1002	9/9	0.93	0.07	13,15,17,17	0
2	SO4	A	2001	5/5	0.95	0.09	25,25,28,29	0

Continued on next page...

Continued from previous page...

Mol	Type	Chain	Res	Atoms	RSCC	RSR	B-factors(\AA^2)	Q<0.9
2	SO4	A	2002	5/5	0.97	0.10	26,30,31,33	0
3	CA	A	3001	1/1	0.99	0.03	17,17,17,17	0
3	CA	B	3002	1/1	0.99	0.02	19,19,19,19	0

6.5 Other polymers [i](#)

There are no such residues in this entry.