



Full wwPDB EM Validation Report ⓘ

Nov 3, 2024 – 04:54 am GMT

PDB ID : 6ZB4
EMDB ID : EMD-11144
Title : SARS CoV-2 Spike protein, Closed conformation, C1 symmetry
Authors : Toelzer, C.; Gupta, K.; Yadav, S.K.N.; Burucu, U.; Schaffitzel, C.; Berger, I.
Deposited on : 2020-06-06
Resolution : 3.03 Å (reported)
Based on initial model : 6VXX

This is a Full wwPDB EM Validation Report for a publicly released PDB entry.

We welcome your comments at validation@mail.wwpdb.org

A user guide is available at

<https://www.wwpdb.org/validation/2017/EMValidationReportHelp>
with specific help available everywhere you see the ⓘ symbol.

The types of validation reports are described at

<http://www.wwpdb.org/validation/2017/FAQs#types>.

The following versions of software and data (see [references ⓘ](#)) were used in the production of this report:

EMDB validation analysis : 0.0.1.dev113
Mogul : 1.8.4, CSD as541be (2020)
MolProbity : 4.02b-467
buster-report : 1.1.7 (2018)
Percentile statistics : 20231227.v01 (using entries in the PDB archive December 27th 2023)
MapQ : 1.9.13
Ideal geometry (proteins) : Engh & Huber (2001)
Ideal geometry (DNA, RNA) : Parkinson et al. (1996)
Validation Pipeline (wwPDB-VP) : 2.39

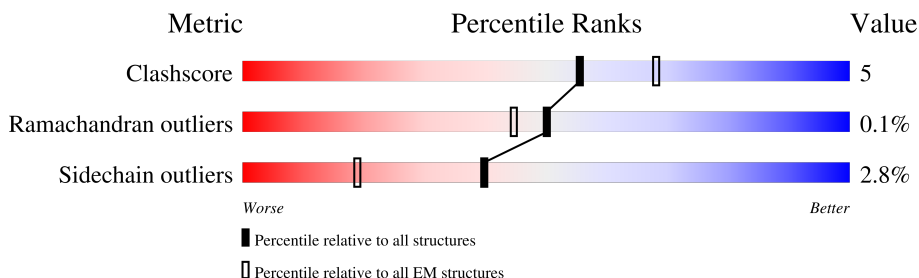
1 Overall quality at a glance

The following experimental techniques were used to determine the structure:

ELECTRON MICROSCOPY

The reported resolution of this entry is 3.03 Å.

Percentile scores (ranging between 0-100) for global validation metrics of the entry are shown in the following graphic. The table shows the number of entries on which the scores are based.



Metric	Whole archive (#Entries)	EM structures (#Entries)
Clashscore	210492	15764
Ramachandran outliers	207382	16835
Sidechain outliers	206894	16415

The table below summarises the geometric issues observed across the polymeric chains and their fit to the map. The red, orange, yellow and green segments of the bar indicate the fraction of residues that contain outliers for ≥ 3 , 2, 1 and 0 types of geometric quality criteria respectively. A grey segment represents the fraction of residues that are not modelled. The numeric value for each fraction is indicated below the corresponding segment, with a dot representing fractions $\leq 5\%$. The upper red bar (where present) indicates the fraction of residues that have poor fit to the EM map (all-atom inclusion $< 40\%$). The numeric value is given above the bar.

Mol	Chain	Length	Quality of chain
1	A	1259	
1	B	1259	
1	C	1259	
2	D	2	

The following table lists non-polymeric compounds, carbohydrate monomers and non-standard residues in protein, DNA, RNA chains that are outliers for geometric or electron-density-fit criteria:

Mol	Type	Chain	Res	Chirality	Geometry	Clashes	Electron density
3	NAG	B	1310	-	-	X	-

2 Entry composition [i](#)

There are 4 unique types of molecules in this entry. The entry contains 24841 atoms, of which 0 are hydrogens and 0 are deuteriums.

In the tables below, the AltConf column contains the number of residues with at least one atom in alternate conformation and the Trace column contains the number of residues modelled with at most 2 atoms.

- Molecule 1 is a protein called Spike glycoprotein.

Mol	Chain	Residues	Atoms					AltConf	Trace
1	C	1035	Total	C	N	O	S	0	0
			8056	5145	1340	1533	38		
1	B	1050	Total	C	N	O	S	0	0
			8189	5229	1368	1554	38		
1	A	1048	Total	C	N	O	S	0	0
			8158	5212	1359	1549	38		

There are 141 discrepancies between the modelled and reference sequences:

Chain	Residue	Modelled	Actual	Comment	Reference
C	675J	ALA	ARG	conflict	UNP P0DTC2
C	1211	SER	-	expression tag	UNP P0DTC2
C	1212	GLY	-	expression tag	UNP P0DTC2
C	1213	ARG	-	expression tag	UNP P0DTC2
C	1214	LEU	-	expression tag	UNP P0DTC2
C	1215	VAL	-	expression tag	UNP P0DTC2
C	1216	PRO	-	expression tag	UNP P0DTC2
C	1217	ARG	-	expression tag	UNP P0DTC2
C	1218	GLY	-	expression tag	UNP P0DTC2
C	1219	SER	-	expression tag	UNP P0DTC2
C	1220	PRO	-	expression tag	UNP P0DTC2
C	1221	GLY	-	expression tag	UNP P0DTC2
C	1222	SER	-	expression tag	UNP P0DTC2
C	1223	GLY	-	expression tag	UNP P0DTC2
C	1224	TYR	-	expression tag	UNP P0DTC2
C	1225	ILE	-	expression tag	UNP P0DTC2
C	1226	PRO	-	expression tag	UNP P0DTC2
C	1227	GLU	-	expression tag	UNP P0DTC2
C	1228	ALA	-	expression tag	UNP P0DTC2
C	1229	PRO	-	expression tag	UNP P0DTC2
C	1230	ARG	-	expression tag	UNP P0DTC2
C	1231	ASP	-	expression tag	UNP P0DTC2
C	1232	GLY	-	expression tag	UNP P0DTC2
C	1233	GLN	-	expression tag	UNP P0DTC2

Continued on next page...

Continued from previous page...

Chain	Residue	Modelled	Actual	Comment	Reference
C	1234	ALA	-	expression tag	UNP P0DTC2
C	1235	TYR	-	expression tag	UNP P0DTC2
C	1236	VAL	-	expression tag	UNP P0DTC2
C	1237	ARG	-	expression tag	UNP P0DTC2
C	1238	LYS	-	expression tag	UNP P0DTC2
C	1239	ASP	-	expression tag	UNP P0DTC2
C	1240	GLY	-	expression tag	UNP P0DTC2
C	1241	GLU	-	expression tag	UNP P0DTC2
C	1242	TRP	-	expression tag	UNP P0DTC2
C	1243	VAL	-	expression tag	UNP P0DTC2
C	1244	LEU	-	expression tag	UNP P0DTC2
C	1245	LEU	-	expression tag	UNP P0DTC2
C	1246	SER	-	expression tag	UNP P0DTC2
C	1247	THR	-	expression tag	UNP P0DTC2
C	1248	PHE	-	expression tag	UNP P0DTC2
C	1249	LEU	-	expression tag	UNP P0DTC2
C	1250	GLY	-	expression tag	UNP P0DTC2
C	1251	HIS	-	expression tag	UNP P0DTC2
C	1252	HIS	-	expression tag	UNP P0DTC2
C	1253	HIS	-	expression tag	UNP P0DTC2
C	1254	HIS	-	expression tag	UNP P0DTC2
C	1255	HIS	-	expression tag	UNP P0DTC2
C	1256	HIS	-	expression tag	UNP P0DTC2
B	676I	ALA	ARG	conflict	UNP P0DTC2
B	1211	SER	-	expression tag	UNP P0DTC2
B	1212	GLY	-	expression tag	UNP P0DTC2
B	1213	ARG	-	expression tag	UNP P0DTC2
B	1214	LEU	-	expression tag	UNP P0DTC2
B	1215	VAL	-	expression tag	UNP P0DTC2
B	1216	PRO	-	expression tag	UNP P0DTC2
B	1217	ARG	-	expression tag	UNP P0DTC2
B	1218	GLY	-	expression tag	UNP P0DTC2
B	1219	SER	-	expression tag	UNP P0DTC2
B	1220	PRO	-	expression tag	UNP P0DTC2
B	1221	GLY	-	expression tag	UNP P0DTC2
B	1222	SER	-	expression tag	UNP P0DTC2
B	1223	GLY	-	expression tag	UNP P0DTC2
B	1224	TYR	-	expression tag	UNP P0DTC2
B	1225	ILE	-	expression tag	UNP P0DTC2
B	1226	PRO	-	expression tag	UNP P0DTC2
B	1227	GLU	-	expression tag	UNP P0DTC2
B	1228	ALA	-	expression tag	UNP P0DTC2

Continued on next page...

Continued from previous page...

Chain	Residue	Modelled	Actual	Comment	Reference
B	1229	PRO	-	expression tag	UNP P0DTC2
B	1230	ARG	-	expression tag	UNP P0DTC2
B	1231	ASP	-	expression tag	UNP P0DTC2
B	1232	GLY	-	expression tag	UNP P0DTC2
B	1233	GLN	-	expression tag	UNP P0DTC2
B	1234	ALA	-	expression tag	UNP P0DTC2
B	1235	TYR	-	expression tag	UNP P0DTC2
B	1236	VAL	-	expression tag	UNP P0DTC2
B	1237	ARG	-	expression tag	UNP P0DTC2
B	1238	LYS	-	expression tag	UNP P0DTC2
B	1239	ASP	-	expression tag	UNP P0DTC2
B	1240	GLY	-	expression tag	UNP P0DTC2
B	1241	GLU	-	expression tag	UNP P0DTC2
B	1242	TRP	-	expression tag	UNP P0DTC2
B	1243	VAL	-	expression tag	UNP P0DTC2
B	1244	LEU	-	expression tag	UNP P0DTC2
B	1245	LEU	-	expression tag	UNP P0DTC2
B	1246	SER	-	expression tag	UNP P0DTC2
B	1247	THR	-	expression tag	UNP P0DTC2
B	1248	PHE	-	expression tag	UNP P0DTC2
B	1249	LEU	-	expression tag	UNP P0DTC2
B	1250	GLY	-	expression tag	UNP P0DTC2
B	1251	HIS	-	expression tag	UNP P0DTC2
B	1252	HIS	-	expression tag	UNP P0DTC2
B	1253	HIS	-	expression tag	UNP P0DTC2
B	1254	HIS	-	expression tag	UNP P0DTC2
B	1255	HIS	-	expression tag	UNP P0DTC2
B	1256	HIS	-	expression tag	UNP P0DTC2
A	676I	ALA	ARG	conflict	UNP P0DTC2
A	1211	SER	-	expression tag	UNP P0DTC2
A	1212	GLY	-	expression tag	UNP P0DTC2
A	1213	ARG	-	expression tag	UNP P0DTC2
A	1214	LEU	-	expression tag	UNP P0DTC2
A	1215	VAL	-	expression tag	UNP P0DTC2
A	1216	PRO	-	expression tag	UNP P0DTC2
A	1217	ARG	-	expression tag	UNP P0DTC2
A	1218	GLY	-	expression tag	UNP P0DTC2
A	1219	SER	-	expression tag	UNP P0DTC2
A	1220	PRO	-	expression tag	UNP P0DTC2
A	1221	GLY	-	expression tag	UNP P0DTC2
A	1222	SER	-	expression tag	UNP P0DTC2
A	1223	GLY	-	expression tag	UNP P0DTC2

Continued on next page...

Continued from previous page...

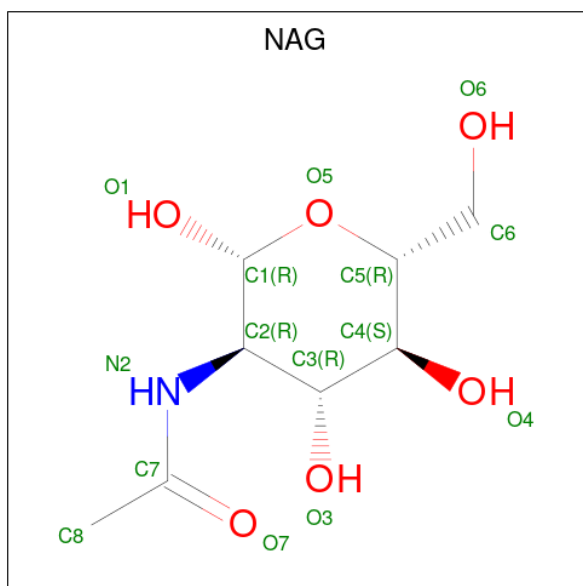
Chain	Residue	Modelled	Actual	Comment	Reference
A	1224	TYR	-	expression tag	UNP P0DTC2
A	1225	ILE	-	expression tag	UNP P0DTC2
A	1226	PRO	-	expression tag	UNP P0DTC2
A	1227	GLU	-	expression tag	UNP P0DTC2
A	1228	ALA	-	expression tag	UNP P0DTC2
A	1229	PRO	-	expression tag	UNP P0DTC2
A	1230	ARG	-	expression tag	UNP P0DTC2
A	1231	ASP	-	expression tag	UNP P0DTC2
A	1232	GLY	-	expression tag	UNP P0DTC2
A	1233	GLN	-	expression tag	UNP P0DTC2
A	1234	ALA	-	expression tag	UNP P0DTC2
A	1235	TYR	-	expression tag	UNP P0DTC2
A	1236	VAL	-	expression tag	UNP P0DTC2
A	1237	ARG	-	expression tag	UNP P0DTC2
A	1238	LYS	-	expression tag	UNP P0DTC2
A	1239	ASP	-	expression tag	UNP P0DTC2
A	1240	GLY	-	expression tag	UNP P0DTC2
A	1241	GLU	-	expression tag	UNP P0DTC2
A	1242	TRP	-	expression tag	UNP P0DTC2
A	1243	VAL	-	expression tag	UNP P0DTC2
A	1244	LEU	-	expression tag	UNP P0DTC2
A	1245	LEU	-	expression tag	UNP P0DTC2
A	1246	SER	-	expression tag	UNP P0DTC2
A	1247	THR	-	expression tag	UNP P0DTC2
A	1248	PHE	-	expression tag	UNP P0DTC2
A	1249	LEU	-	expression tag	UNP P0DTC2
A	1250	GLY	-	expression tag	UNP P0DTC2
A	1251	HIS	-	expression tag	UNP P0DTC2
A	1252	HIS	-	expression tag	UNP P0DTC2
A	1253	HIS	-	expression tag	UNP P0DTC2
A	1254	HIS	-	expression tag	UNP P0DTC2
A	1255	HIS	-	expression tag	UNP P0DTC2
A	1256	HIS	-	expression tag	UNP P0DTC2

- Molecule 2 is an oligosaccharide called 2-acetamido-2-deoxy-beta-D-glucopyranose-(1-4)-2-acetamido-2-deoxy-beta-D-glucopyranose.



Mol	Chain	Residues	Atoms				AltConf	Trace
2	D	2	Total	C	N	O	0	0
			28	16	2	10		

- Molecule 3 is 2-acetamido-2-deoxy-beta-D-glucopyranose (three-letter code: NAG) (formula: $C_8H_{15}NO_6$).



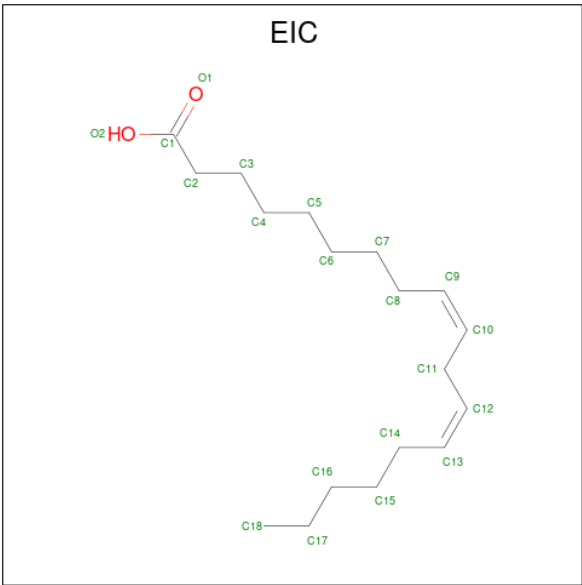
Mol	Chain	Residues	Atoms				AltConf
3	C	1	Total	C	N	O	0
			14	8	1	5	
3	C	1	Total	C	N	O	0
			14	8	1	5	
3	C	1	Total	C	N	O	0
			14	8	1	5	
3	C	1	Total	C	N	O	0
			14	8	1	5	
3	C	1	Total	C	N	O	0
			14	8	1	5	
3	C	1	Total	C	N	O	0
			14	8	1	5	
3	B	1	Total	C	N	O	0
			14	8	1	5	
3	B	1	Total	C	N	O	0
			14	8	1	5	
3	B	1	Total	C	N	O	0
			14	8	1	5	
3	B	1	Total	C	N	O	0
			14	8	1	5	

Continued on next page...

Continued from previous page...

Mol	Chain	Residues	Atoms				AltConf
3	B	1	Total	C	N	O	0
			14	8	1	5	
3	B	1	Total	C	N	O	0
			14	8	1	5	
3	B	1	Total	C	N	O	0
			14	8	1	5	
3	B	1	Total	C	N	O	0
			14	8	1	5	
3	B	1	Total	C	N	O	0
			14	8	1	5	
3	B	1	Total	C	N	O	0
			14	8	1	5	
3	A	1	Total	C	N	O	0
			14	8	1	5	
3	A	1	Total	C	N	O	0
			14	8	1	5	
3	A	1	Total	C	N	O	0
			14	8	1	5	
3	A	1	Total	C	N	O	0
			14	8	1	5	
3	A	1	Total	C	N	O	0
			14	8	1	5	
3	A	1	Total	C	N	O	0
			14	8	1	5	
3	A	1	Total	C	N	O	0
			14	8	1	5	
3	A	1	Total	C	N	O	0
			14	8	1	5	

- Molecule 4 is LINOLEIC ACID (three-letter code: EIC) (formula: $C_{18}H_{32}O_2$) (labeled as "Ligand of Interest" by depositor).

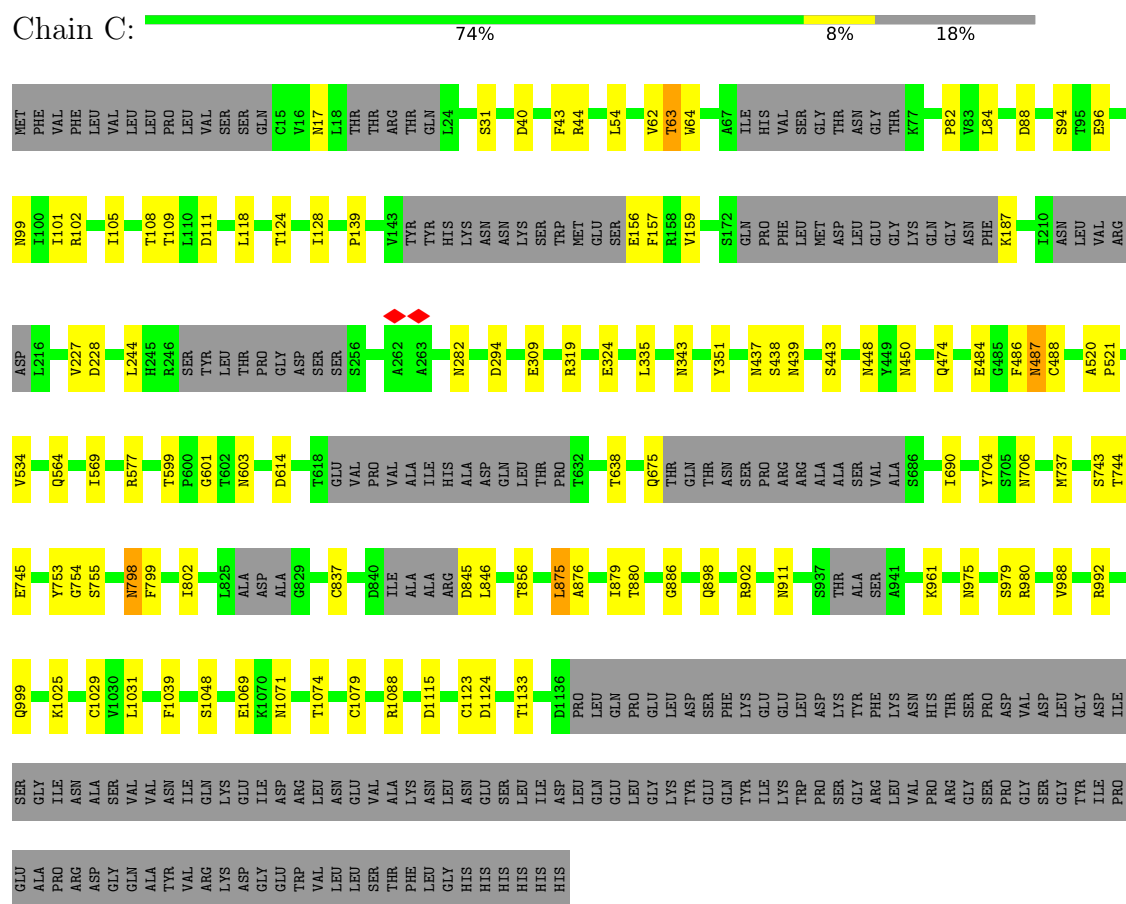


Mol	Chain	Residues	Atoms			AltConf
4	C	1	Total	C	O	0
			20	18	2	
4	B	1	Total	C	O	0
			20	18	2	
4	A	1	Total	C	O	0
			20	18	2	

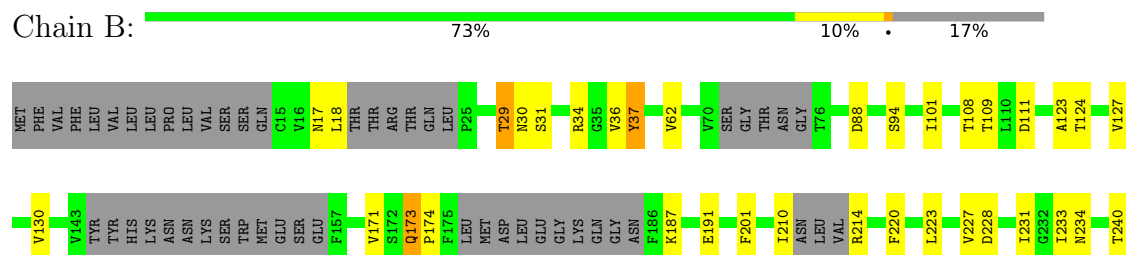
3 Residue-property plots [i](#)

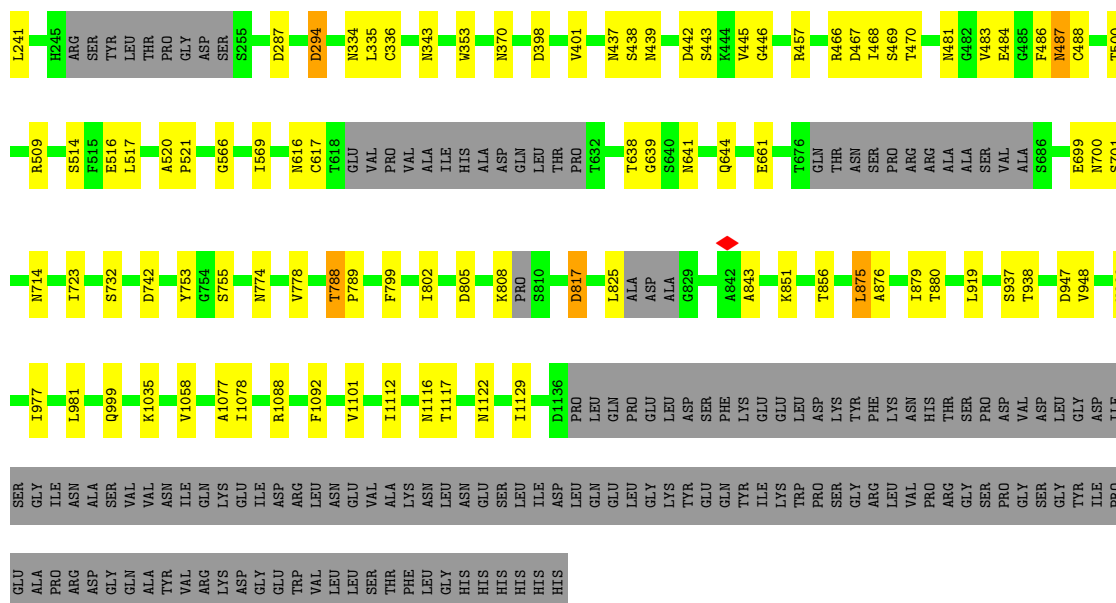
These plots are drawn for all protein, RNA, DNA and oligosaccharide chains in the entry. The first graphic for a chain summarises the proportions of the various outlier classes displayed in the second graphic. The second graphic shows the sequence view annotated by issues in geometry and atom inclusion in map density. Residues are color-coded according to the number of geometric quality criteria for which they contain at least one outlier: green = 0, yellow = 1, orange = 2 and red = 3 or more. A red diamond above a residue indicates a poor fit to the EM map for this residue (all-atom inclusion < 40%). Stretches of 2 or more consecutive residues without any outlier are shown as a green connector. Residues present in the sample, but not in the model, are shown in grey.

• Molecule 1: Spike glycoprotein



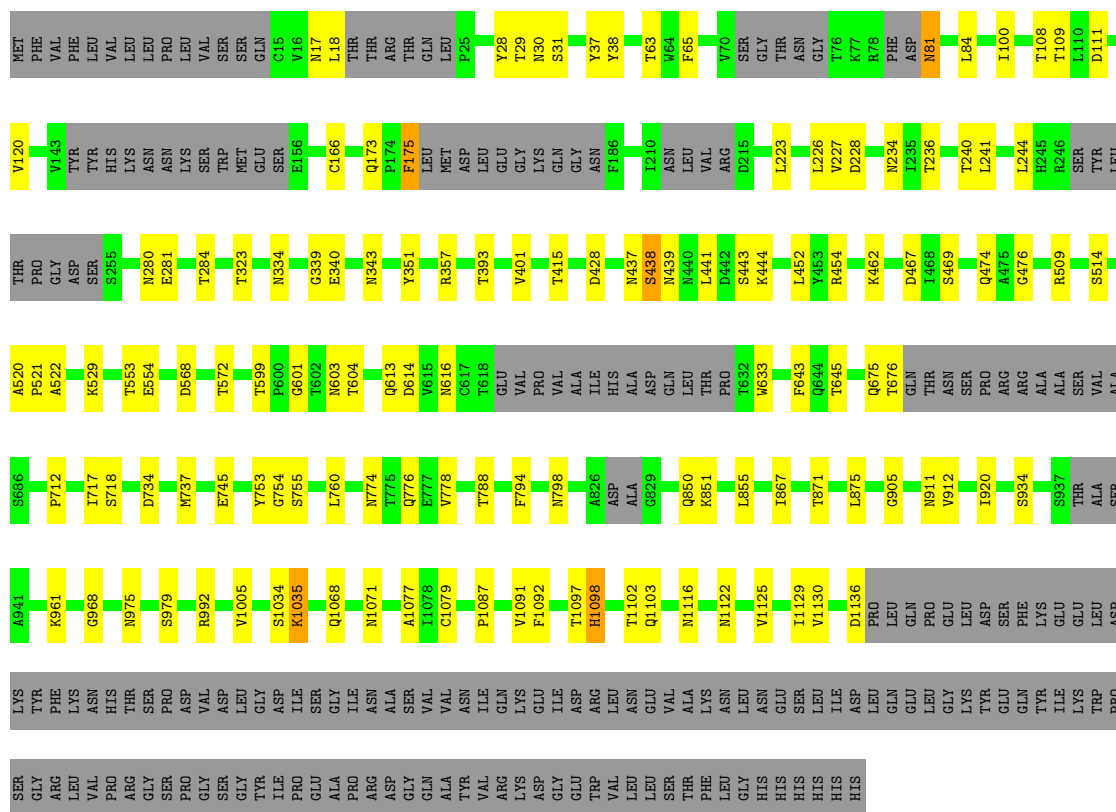
• Molecule 1: Spike glycoprotein





• Molecule 1: Spike glycoprotein

Chain A: 73% 10% 17%



• Molecule 2: 2-acetamido-2-deoxy-beta-D-glucopyranose-(1-4)-2-acetamido-2-deoxy-beta-D-glucopyranose

Chain D: 50% 50%



4 Experimental information

Property	Value	Source
EM reconstruction method	SINGLE PARTICLE	Depositor
Imposed symmetry	POINT, C1	Depositor
Number of particles used	136405	Depositor
Resolution determination method	FSC 0.143 CUT-OFF	Depositor
CTF correction method	PHASE FLIPPING AND AMPLITUDE CORRECTION	Depositor
Microscope	TFS TALOS	Depositor
Voltage (kV)	200	Depositor
Electron dose ($e^-/\text{\AA}^2$)	60.5	Depositor
Minimum defocus (nm)	-0.8	Depositor
Maximum defocus (nm)	-2	Depositor
Magnification	130000	Depositor
Image detector	GATAN K2 SUMMIT (4k x 4k)	Depositor
Maximum map value	0.255	Depositor
Minimum map value	-0.175	Depositor
Average map value	0.001	Depositor
Map value standard deviation	0.010	Depositor
Recommended contour level	0.016	Depositor
Map size (Å)	230.99998, 230.99998, 230.99998	wwPDB
Map dimensions	220, 220, 220	wwPDB
Map angles (°)	90.0, 90.0, 90.0	wwPDB
Pixel spacing (Å)	1.05, 1.05, 1.05	Depositor

5 Model quality [i](#)

5.1 Standard geometry [i](#)

Bond lengths and bond angles in the following residue types are not validated in this section: NAG, EIC

The Z score for a bond length (or angle) is the number of standard deviations the observed value is removed from the expected value. A bond length (or angle) with $|Z| > 5$ is considered an outlier worth inspection. RMSZ is the root-mean-square of all Z scores of the bond lengths (or angles).

Mol	Chain	Bond lengths		Bond angles	
		RMSZ	# Z >5	RMSZ	# Z >5
1	A	0.29	0/8339	0.47	0/11338
1	B	0.29	0/8371	0.47	0/11378
1	C	0.30	0/8234	0.47	0/11197
All	All	0.29	0/24944	0.47	0/33913

There are no bond length outliers.

There are no bond angle outliers.

There are no chirality outliers.

There are no planarity outliers.

5.2 Too-close contacts [i](#)

In the following table, the Non-H and H(model) columns list the number of non-hydrogen atoms and hydrogen atoms in the chain respectively. The H(added) column lists the number of hydrogen atoms added and optimized by MolProbity. The Clashes column lists the number of clashes within the asymmetric unit, whereas Symm-Clashes lists symmetry-related clashes.

Mol	Chain	Non-H	H(model)	H(added)	Clashes	Symm-Clashes
1	A	8158	0	7946	83	0
1	B	8189	0	7987	92	0
1	C	8056	0	7834	62	0
2	D	28	0	25	0	0
3	A	126	0	117	12	0
3	B	140	0	130	26	0
3	C	84	0	78	12	0
4	A	20	0	31	0	0
4	B	20	0	31	0	0
4	C	20	0	31	0	0
All	All	24841	0	24210	235	0

The all-atom clashscore is defined as the number of clashes found per 1000 atoms (including hydrogen atoms). The all-atom clashscore for this structure is 5.

All (235) close contacts within the same asymmetric unit are listed below, sorted by their clash magnitude.

Atom-1	Atom-2	Interatomic distance (Å)	Clash overlap (Å)
1:B:616:ASN:HD21	3:B:1305:NAG:C1	1.47	1.25
1:B:616:ASN:ND2	3:B:1305:NAG:C1	2.13	1.10
1:B:714:ASN:ND2	3:B:1301:NAG:C1	2.24	1.01
1:C:343:ASN:ND2	3:C:1401:NAG:O5	1.97	0.97
3:A:2102:NAG:O4	3:A:2103:NAG:C1	2.12	0.96
1:A:339:GLY:O	1:A:343:ASN:OD1	1.81	0.95
3:B:1309:NAG:H82	1:A:462:LYS:NZ	1.87	0.90
1:C:975:ASN:O	1:C:979:SER:OG	1.95	0.83
1:B:714:ASN:CG	3:B:1301:NAG:C1	2.48	0.82
1:A:226:LEU:HG	1:A:227:VAL:HG23	1.61	0.82
1:C:343:ASN:ND2	3:C:1401:NAG:C1	2.44	0.81
1:B:616:ASN:OD1	3:B:1305:NAG:C1	2.29	0.81
1:A:798:ASN:ND2	3:A:2107:NAG:O7	2.14	0.81
1:B:616:ASN:HD21	3:B:1305:NAG:C2	1.98	0.77
1:B:616:ASN:CG	3:B:1305:NAG:C1	2.52	0.77
1:A:81:ASN:ND2	1:A:81:ASN:O	2.18	0.75
1:B:700:ASN:OD1	1:B:701:SER:N	2.21	0.73
3:B:1310:NAG:O7	3:B:1310:NAG:O3	2.05	0.73
1:C:999:GLN:OE1	1:B:999:GLN:NE2	2.23	0.72
1:A:339:GLY:C	1:A:343:ASN:OD1	2.27	0.72
1:B:808:LYS:NZ	1:B:817:ASP:OD2	2.26	0.69
1:A:339:GLY:CA	1:A:343:ASN:OD1	2.41	0.69
1:C:898:GLN:OE1	1:C:902:ARG:NH2	2.25	0.68
3:B:1301:NAG:O4	3:B:1302:NAG:C1	2.42	0.68
1:B:17:ASN:OD1	3:B:1310:NAG:O5	2.12	0.67
1:A:339:GLY:HA2	1:A:343:ASN:OD1	1.95	0.67
1:C:439:ASN:O	1:C:443:SER:OG	2.14	0.66
1:B:17:ASN:OD1	3:B:1310:NAG:H61	1.95	0.65
1:A:467:ASP:OD1	1:A:469:SER:OG	2.13	0.65
3:B:1309:NAG:H82	1:A:462:LYS:HZ2	1.59	0.65
1:C:309:GLU:N	1:C:309:GLU:OE1	2.29	0.65
1:B:486:PHE:O	1:B:487:ASN:ND2	2.30	0.65
1:B:851:LYS:NZ	1:A:614:ASP:OD2	2.26	0.64
3:B:1309:NAG:H82	1:A:462:LYS:CE	2.28	0.63
1:C:319:ARG:NH2	1:A:734:ASP:OD2	2.31	0.63
1:A:17:ASN:HD21	3:A:2109:NAG:HN2	1.47	0.63
1:C:105:ILE:HG22	1:C:118:LEU:HD12	1.79	0.63

Continued on next page...

Continued from previous page...

Atom-1	Atom-2	Interatomic distance (Å)	Clash overlap (Å)
1:C:99:ASN:O	1:C:102:ARG:NH2	2.32	0.63
1:A:975:ASN:O	1:A:979:SER:OG	2.07	0.62
1:B:127:VAL:HG13	1:B:171:VAL:HG22	1.80	0.62
1:C:520:ALA:HB1	1:C:521:PRO:HD2	1.81	0.62
1:C:599:THR:HG22	1:C:601:GLY:H	1.64	0.61
1:B:520:ALA:HB1	1:B:521:PRO:HD2	1.81	0.61
1:A:520:ALA:HB1	1:A:521:PRO:HD2	1.81	0.61
1:C:486:PHE:O	1:C:487:ASN:ND2	2.32	0.61
1:C:798:ASN:HD21	3:C:1404:NAG:H2	1.66	0.60
1:A:968:GLY:O	1:A:992:ARG:NH1	2.36	0.59
1:B:111:ASP:OD1	1:B:111:ASP:N	2.35	0.58
1:B:876:ALA:O	1:B:880:THR:OG1	2.21	0.58
1:B:123:ALA:O	1:B:124:THR:HG23	2.04	0.58
1:B:335:LEU:HD23	1:B:336:CYS:O	2.02	0.58
1:B:31:SER:HB3	1:B:62:VAL:HG21	1.85	0.58
1:B:37:TYR:O	1:B:37:TYR:CD1	2.57	0.58
1:C:1025:LYS:NZ	1:C:1039:PHE:O	2.37	0.58
1:A:568:ASP:N	1:A:572:THR:O	2.36	0.57
1:A:867:ILE:O	1:A:871:THR:HG23	2.04	0.57
1:B:17:ASN:HD21	3:B:1310:NAG:H5	1.70	0.57
1:B:438:SER:O	1:B:438:SER:OG	2.21	0.57
1:C:876:ALA:O	1:C:880:THR:OG1	2.21	0.56
1:B:520:ALA:HB1	1:B:521:PRO:CD	2.35	0.56
1:A:1079:CYS:HB2	1:A:1129:ILE:HD11	1.88	0.56
1:A:244:LEU:HD12	1:A:244:LEU:O	2.06	0.56
1:C:845:ASP:OD1	1:C:846:LEU:N	2.39	0.55
1:B:1101:VAL:HG23	1:B:1112:ILE:HG12	1.88	0.55
1:A:108:THR:HG21	1:A:234:ASN:OD1	2.07	0.55
1:B:353:TRP:O	1:B:466:ARG:NH1	2.40	0.55
1:C:1071:ASN:OD1	3:C:1405:NAG:C1	2.54	0.55
1:B:34:ARG:NH2	1:B:191:GLU:OE1	2.39	0.55
1:C:244:LEU:O	1:C:244:LEU:HD12	2.07	0.54
1:C:109:THR:HG23	1:C:109:THR:O	2.07	0.54
3:C:1402:NAG:H82	1:B:468:ILE:HD12	1.90	0.54
1:A:37:TYR:O	1:A:37:TYR:CD1	2.60	0.54
1:C:911:ASN:N	1:C:911:ASN:OD1	2.40	0.54
1:B:437:ASN:OD1	1:B:438:SER:N	2.41	0.54
1:B:617:CYS:N	1:B:644:GLN:OE1	2.41	0.54
1:A:1097:THR:OG1	1:A:1098:HIS:ND1	2.39	0.54
1:B:1092:PHE:CD1	1:B:1101:VAL:HG22	2.43	0.54
3:C:1405:NAG:H2	3:C:1405:NAG:H61	1.90	0.53

Continued on next page...

Continued from previous page...

Atom-1	Atom-2	Interatomic distance (Å)	Clash overlap (Å)
1:B:201:PHE:HB2	1:B:231:ILE:HD11	1.90	0.53
1:A:340:GLU:OE1	1:A:340:GLU:N	2.41	0.53
1:C:875:LEU:HD23	1:C:879:ILE:HD11	1.90	0.53
1:C:614:ASP:OD2	1:A:851:LYS:NZ	2.34	0.53
1:C:96:GLU:O	1:C:187:LYS:N	2.42	0.52
1:B:467:ASP:OD1	1:B:469:SER:OG	2.20	0.52
1:A:616:ASN:HD21	3:A:2106:NAG:C7	2.22	0.52
1:B:1078:ILE:HD12	1:B:1112:ILE:HD13	1.90	0.52
1:A:234:ASN:CG	3:A:2101:NAG:C1	2.78	0.52
1:C:798:ASN:HD21	3:C:1404:NAG:C2	2.22	0.52
1:A:437:ASN:OD1	1:A:438:SER:N	2.42	0.52
1:C:564:GLN:NE2	1:C:577:ARG:O	2.42	0.52
1:C:294:ASP:OD1	1:C:294:ASP:N	2.43	0.52
1:A:428:ASP:OD1	1:A:428:ASP:N	2.43	0.52
1:B:977:ILE:HG23	1:B:981:LEU:HD12	1.92	0.52
1:C:82:PRO:HG2	1:C:84:LEU:HD21	1.92	0.52
1:C:704:TYR:HH	1:A:794:PHE:HD1	1.58	0.52
1:B:17:ASN:ND2	3:B:1310:NAG:C1	2.72	0.52
3:A:2109:NAG:O7	3:A:2109:NAG:O3	2.28	0.52
1:C:569:ILE:HD11	1:A:961:LYS:HG2	1.93	0.51
1:C:324:GLU:OE1	1:C:534:VAL:HG11	2.11	0.51
1:C:94:SER:HB2	1:C:101:ILE:HD12	1.93	0.51
1:B:343:ASN:ND2	3:B:1303:NAG:O5	2.43	0.51
1:B:638:THR:HG22	1:B:639:GLY:H	1.76	0.51
1:C:40:ASP:OD2	1:C:44:ARG:NH2	2.39	0.50
1:B:130:VAL:HG21	1:B:231:ILE:HG22	1.93	0.50
1:C:520:ALA:HB1	1:C:521:PRO:CD	2.41	0.50
1:B:30:ASN:O	1:B:31:SER:OG	2.24	0.50
1:B:294:ASP:N	1:B:294:ASP:OD1	2.43	0.50
1:B:109:THR:O	1:B:109:THR:HG23	2.10	0.50
1:A:717:ILE:HG13	1:A:920:ILE:HG23	1.94	0.50
1:C:156:GLU:N	1:C:156:GLU:OE1	2.44	0.49
3:B:1309:NAG:O6	3:B:1309:NAG:O4	2.23	0.49
1:B:438:SER:OG	1:B:442:ASP:OD2	2.26	0.49
1:B:17:ASN:HD21	3:B:1310:NAG:C5	2.25	0.49
1:B:919:LEU:CD1	3:B:1302:NAG:H82	2.42	0.49
1:C:105:ILE:HG22	1:C:118:LEU:CD1	2.43	0.49
1:B:1092:PHE:CE1	1:B:1101:VAL:HG22	2.47	0.49
1:C:118:LEU:O	1:C:128:ILE:O	2.31	0.49
3:C:1405:NAG:O7	3:C:1405:NAG:H3	2.13	0.49
1:B:439:ASN:O	1:B:443:SER:OG	2.20	0.49

Continued on next page...

Continued from previous page...

Atom-1	Atom-2	Interatomic distance (Å)	Clash overlap (Å)
1:A:441:LEU:O	1:A:444:LYS:NZ	2.46	0.49
1:A:234:ASN:OD1	3:A:2101:NAG:C1	2.61	0.48
1:C:798:ASN:ND2	3:C:1404:NAG:H2	2.27	0.48
1:B:788:THR:HG22	1:B:789:PRO:HD2	1.95	0.48
1:A:753:TYR:O	1:A:755:SER:N	2.46	0.48
1:A:234:ASN:OD1	3:A:2101:NAG:O5	2.31	0.48
1:B:732:SER:HB3	1:B:856:THR:HG23	1.95	0.48
1:C:437:ASN:OD1	1:C:438:SER:N	2.48	0.47
1:B:1116:ASN:O	1:B:1117:THR:HG23	2.15	0.47
1:A:401:VAL:HG22	1:A:509:ARG:HG2	1.96	0.47
1:C:675:GLN:HG3	1:C:690:ILE:HD11	1.97	0.47
1:C:961:LYS:HG2	1:B:569:ILE:HD11	1.96	0.47
1:B:17:ASN:CG	3:B:1310:NAG:O5	2.53	0.47
1:C:980:ARG:HD2	1:B:517:LEU:HD13	1.96	0.47
1:B:947:ASP:OD2	1:B:948:VAL:N	2.47	0.47
1:A:334:ASN:OD1	1:A:334:ASN:N	2.42	0.47
1:A:675:GLN:HG2	1:A:676:THR:H	1.79	0.47
1:A:850:GLN:HB2	1:A:855:LEU:HD12	1.97	0.47
1:A:415:THR:HG22	1:A:415:THR:O	2.15	0.47
1:B:173:GLN:HB2	1:B:174:PRO:CD	2.44	0.47
1:A:1122:ASN:OD1	1:A:1122:ASN:N	2.47	0.47
1:C:798:ASN:HD21	3:C:1404:NAG:C1	2.28	0.46
1:A:28:TYR:O	1:A:29:THR:OG1	2.30	0.46
1:A:393:THR:HA	1:A:522:ALA:HA	1.98	0.46
1:B:470:THR:HG23	1:B:470:THR:O	2.15	0.46
1:B:481:ASN:OD1	1:B:481:ASN:N	2.47	0.46
1:A:108:THR:HG22	1:A:236:THR:HB	1.97	0.46
1:B:937:SER:OG	1:B:938:THR:N	2.48	0.46
1:B:774:ASN:O	1:B:778:VAL:HG23	2.16	0.46
1:A:100:ILE:O	1:A:100:ILE:HG22	2.15	0.46
1:B:799:PHE:CD1	1:B:802:ILE:HD11	2.50	0.46
3:B:1309:NAG:H82	1:A:462:LYS:HZ1	1.76	0.46
1:B:1077:ALA:O	1:B:1129:ILE:HD12	2.16	0.45
1:C:227:VAL:HG12	1:C:228:ASP:H	1.80	0.45
1:A:454:ARG:NH2	1:A:469:SER:O	2.36	0.45
1:B:227:VAL:HG22	1:B:228:ASP:H	1.82	0.45
1:B:714:ASN:HD21	3:B:1301:NAG:C1	2.23	0.45
1:A:1071:ASN:ND2	3:A:2108:NAG:C1	2.80	0.45
1:B:234:ASN:OD1	3:B:1309:NAG:C1	2.56	0.45
1:B:484:GLU:HA	1:B:488:CYS:HB2	1.98	0.45
1:B:753:TYR:O	1:B:755:SER:N	2.50	0.45

Continued on next page...

Continued from previous page...

Atom-1	Atom-2	Interatomic distance (Å)	Clash overlap (Å)
1:A:29:THR:HG22	1:A:30:ASN:N	2.32	0.45
1:A:1102:THR:HG23	1:A:1103:GLN:O	2.18	0.44
1:C:31:SER:HB2	1:C:62:VAL:HG21	1.99	0.44
1:C:886:GLY:HA3	1:C:1031:LEU:HD23	1.97	0.44
1:A:63:THR:HG1	1:A:65:PHE:HE2	1.63	0.44
1:A:774:ASN:O	1:A:778:VAL:HG23	2.17	0.44
1:A:1077:ALA:O	1:A:1129:ILE:HG13	2.18	0.44
1:A:108:THR:HG22	1:A:236:THR:CB	2.47	0.44
1:A:17:ASN:O	1:A:18:LEU:HD23	2.17	0.44
1:B:334:ASN:N	1:B:334:ASN:OD1	2.43	0.44
1:A:616:ASN:ND2	3:A:2106:NAG:C7	2.80	0.44
1:B:29:THR:HG22	1:B:30:ASN:H	1.82	0.44
1:C:448:ASN:OD1	1:C:450:ASN:ND2	2.51	0.44
1:B:17:ASN:O	1:B:18:LEU:HD12	2.18	0.43
1:A:911:ASN:OD1	1:A:911:ASN:N	2.51	0.43
1:A:599:THR:HG22	1:A:601:GLY:H	1.84	0.43
1:C:108:THR:HG23	1:C:109:THR:H	1.83	0.43
1:C:753:TYR:O	1:C:755:SER:N	2.51	0.43
1:A:109:THR:O	1:A:111:ASP:N	2.45	0.43
1:A:603:ASN:OD1	1:A:604:THR:HG23	2.18	0.43
1:C:139:PRO:HB2	1:C:159:VAL:HG23	2.01	0.43
1:A:712:PRO:HA	1:A:1068:GLN:O	2.18	0.43
1:C:799:PHE:HD1	1:C:802:ILE:HD11	1.83	0.43
1:A:339:GLY:HA2	1:A:343:ASN:CG	2.39	0.43
1:A:439:ASN:O	1:A:443:SER:OG	2.24	0.43
1:C:1029:CYS:O	1:C:1048:SER:OG	2.36	0.43
1:A:173:GLN:O	1:A:175:PHE:N	2.51	0.43
1:A:280:ASN:OD1	1:A:284:THR:N	2.43	0.43
1:B:483:VAL:HG22	1:B:484:GLU:H	1.84	0.43
1:B:802:ILE:HD12	1:B:875:LEU:HD21	2.00	0.42
1:A:223:LEU:N	1:A:223:LEU:HD12	2.34	0.42
1:A:616:ASN:ND2	3:A:2106:NAG:O7	2.52	0.42
1:C:743:SER:OG	1:C:745:GLU:OE2	2.36	0.42
1:A:474:GLN:NE2	1:A:476:GLY:O	2.48	0.42
1:C:54:LEU:HD22	1:C:88:ASP:OD2	2.19	0.42
1:B:187:LYS:O	1:B:210:ILE:N	2.37	0.42
1:A:227:VAL:HG12	1:A:228:ASP:N	2.35	0.42
1:B:843:ALA:HB1	1:A:568:ASP:OD2	2.18	0.42
1:B:919:LEU:HD12	3:B:1302:NAG:H82	2.01	0.42
3:C:1405:NAG:H61	3:C:1405:NAG:C2	2.48	0.42
1:B:223:LEU:HD12	1:B:223:LEU:N	2.34	0.42

Continued on next page...

Continued from previous page...

Atom-1	Atom-2	Interatomic distance (Å)	Clash overlap (Å)
1:A:912:VAL:O	1:A:912:VAL:HG12	2.20	0.42
1:A:1091:VAL:HG22	1:A:1092:PHE:N	2.35	0.42
1:C:108:THR:HG23	1:C:109:THR:N	2.35	0.42
1:B:17:ASN:ND2	3:B:1310:NAG:O5	2.53	0.42
3:C:1402:NAG:H82	1:B:468:ILE:CD1	2.49	0.42
1:A:905:GLY:O	1:A:1035:LYS:NZ	2.42	0.42
1:C:1069:GLU:OE1	1:C:1069:GLU:N	2.44	0.41
1:B:94:SER:HB2	1:B:101:ILE:HD12	2.01	0.41
1:B:240:THR:HG22	1:B:241:LEU:N	2.34	0.41
1:B:445:VAL:HG23	1:B:446:GLY:H	1.85	0.41
1:B:457:ARG:NH1	1:B:467:ASP:OD2	2.52	0.41
1:B:723:ILE:HG13	1:B:1058:VAL:HG22	2.02	0.41
1:B:398:ASP:OD1	1:B:398:ASP:N	2.51	0.41
1:B:805:ASP:N	1:B:805:ASP:OD1	2.53	0.41
1:A:760:LEU:HD22	1:A:1005:VAL:HG21	2.02	0.41
1:B:36:VAL:HG21	1:B:220:PHE:CZ	2.55	0.41
1:C:63:THR:HG22	1:C:64:TRP:H	1.84	0.41
1:A:616:ASN:HD21	3:A:2106:NAG:C1	2.33	0.41
1:A:643:PHE:CD2	1:A:645:THR:HG22	2.55	0.41
1:C:988:VAL:O	1:C:992:ARG:HG3	2.21	0.41
1:C:96:GLU:OE2	1:C:101:ILE:N	2.54	0.41
1:C:109:THR:O	1:C:111:ASP:N	2.53	0.41
1:A:240:THR:HG22	1:A:241:LEU:N	2.36	0.41
1:B:875:LEU:HD23	1:B:879:ILE:HD11	2.02	0.41
1:A:553:THR:HG22	1:A:554:GLU:N	2.36	0.41
1:C:43:PHE:O	1:B:566:GLY:O	2.39	0.40
1:B:966:ASN:N	1:B:966:ASN:OD1	2.54	0.40
1:B:227:VAL:HG22	1:B:228:ASP:N	2.36	0.40
1:A:37:TYR:O	1:A:38:TYR:C	2.59	0.40
1:A:1087:PRO:O	1:A:1116:ASN:O	2.39	0.40
1:C:484:GLU:HA	1:C:488:CYS:HB2	2.02	0.40
1:B:231:ILE:HD12	1:B:233:ILE:HG12	2.03	0.40
1:B:401:VAL:HG22	1:B:509:ARG:HG2	2.04	0.40
1:A:745:GLU:OE2	1:A:745:GLU:N	2.47	0.40

There are no symmetry-related clashes.

5.3 Torsion angles

5.3.1 Protein backbone

In the following table, the Percentiles column shows the percent Ramachandran outliers of the chain as a percentile score with respect to all PDB entries followed by that with respect to all EM entries.

The Analysed column shows the number of residues for which the backbone conformation was analysed, and the total number of residues.

Mol	Chain	Analysed	Favoured	Allowed	Outliers	Percentiles	
1	A	1024/1259 (81%)	938 (92%)	85 (8%)	1 (0%)	48	79
1	B	1028/1259 (82%)	934 (91%)	94 (9%)	0	100	100
1	C	1011/1259 (80%)	938 (93%)	72 (7%)	1 (0%)	48	79
All	All	3063/3777 (81%)	2810 (92%)	251 (8%)	2 (0%)	50	79

All (2) Ramachandran outliers are listed below:

Mol	Chain	Res	Type
1	A	754	GLY
1	C	754	GLY

5.3.2 Protein sidechains

In the following table, the Percentiles column shows the percent sidechain outliers of the chain as a percentile score with respect to all PDB entries followed by that with respect to all EM entries.

The Analysed column shows the number of residues for which the sidechain conformation was analysed, and the total number of residues.

Mol	Chain	Analysed	Rotameric	Outliers	Percentiles	
1	A	904/1095 (83%)	876 (97%)	28 (3%)	35	65
1	B	909/1095 (83%)	885 (97%)	24 (3%)	41	69
1	C	894/1095 (82%)	869 (97%)	25 (3%)	38	67
All	All	2707/3285 (82%)	2630 (97%)	77 (3%)	40	67

All (77) residues with a non-rotameric sidechain are listed below:

Mol	Chain	Res	Type
1	C	17	ASN

Continued on next page...

Continued from previous page...

Mol	Chain	Res	Type
1	C	63	THR
1	C	124	THR
1	C	157	PHE
1	C	282	ASN
1	C	335	LEU
1	C	351	TYR
1	C	474	GLN
1	C	487	ASN
1	C	603	ASN
1	C	638	THR
1	C	706	ASN
1	C	737	MET
1	C	744	THR
1	C	798	ASN
1	C	837	CYS
1	C	856	THR
1	C	875	LEU
1	C	1074	THR
1	C	1079	CYS
1	C	1088	ARG
1	C	1115	ASP
1	C	1123	CYS
1	C	1124	ASP
1	C	1133	THR
1	B	29	THR
1	B	37	TYR
1	B	88	ASP
1	B	108	THR
1	B	173	GLN
1	B	214	ARG
1	B	287	ASP
1	B	294	ASP
1	B	370	ASN
1	B	487	ASN
1	B	500	THR
1	B	514	SER
1	B	516	GLU
1	B	641	ASN
1	B	661	GLU
1	B	699	GLU
1	B	742	ASP
1	B	788	THR

Continued on next page...

Continued from previous page...

Mol	Chain	Res	Type
1	B	817	ASP
1	B	825	LEU
1	B	875	LEU
1	B	1035	LYS
1	B	1088	ARG
1	B	1122	ASN
1	A	31	SER
1	A	81	ASN
1	A	84	LEU
1	A	120	VAL
1	A	166	CYS
1	A	175	PHE
1	A	281	GLU
1	A	323	THR
1	A	351	TYR
1	A	357	ARG
1	A	438	SER
1	A	452	LEU
1	A	514	SER
1	A	529	LYS
1	A	613	GLN
1	A	633	TRP
1	A	718	SER
1	A	737	MET
1	A	776	GLN
1	A	788	THR
1	A	875	LEU
1	A	934	SER
1	A	1034	SER
1	A	1035	LYS
1	A	1098	HIS
1	A	1125	VAL
1	A	1130	VAL
1	A	1136	ASP

Sometimes sidechains can be flipped to improve hydrogen bonding and reduce clashes. All (20) such sidechains are listed below:

Mol	Chain	Res	Type
1	C	165	ASN
1	C	448	ASN
1	C	450	ASN
1	C	474	GLN

Continued on next page...

Continued from previous page...

Mol	Chain	Res	Type
1	C	481	ASN
1	C	613	GLN
1	C	798	ASN
1	C	952	ASN
1	C	999	GLN
1	B	343	ASN
1	B	616	ASN
1	B	952	ASN
1	B	999	GLN
1	A	17	ASN
1	A	52	GLN
1	A	606	ASN
1	A	616	ASN
1	A	952	ASN
1	A	1071	ASN
1	A	1132	ASN

5.3.3 RNA ⓘ

There are no RNA molecules in this entry.

5.4 Non-standard residues in protein, DNA, RNA chains ⓘ

There are no non-standard protein/DNA/RNA residues in this entry.

5.5 Carbohydrates ⓘ

2 monosaccharides are modelled in this entry.

In the following table, the Counts columns list the number of bonds (or angles) for which Mogul statistics could be retrieved, the number of bonds (or angles) that are observed in the model and the number of bonds (or angles) that are defined in the Chemical Component Dictionary. The Link column lists molecule types, if any, to which the group is linked. The Z score for a bond length (or angle) is the number of standard deviations the observed value is removed from the expected value. A bond length (or angle) with $|Z| > 2$ is considered an outlier worth inspection. RMSZ is the root-mean-square of all Z scores of the bond lengths (or angles).

Mol	Type	Chain	Res	Link	Bond lengths			Bond angles		
					Counts	RMSZ	$\# Z > 2$	Counts	RMSZ	$\# Z > 2$
2	NAG	D	1	2,1	14,14,15	0.28	0	17,19,21	0.73	1 (5%)
2	NAG	D	2	2	14,14,15	0.40	0	17,19,21	0.96	0

In the following table, the Chirals column lists the number of chiral outliers, the number of chiral centers analysed, the number of these observed in the model and the number defined in the Chemical Component Dictionary. Similar counts are reported in the Torsion and Rings columns. '-' means no outliers of that kind were identified.

Mol	Type	Chain	Res	Link	Chirals	Torsions	Rings
2	NAG	D	1	2,1	-	2/6/23/26	0/1/1/1
2	NAG	D	2	2	-	2/6/23/26	0/1/1/1

There are no bond length outliers.

All (1) bond angle outliers are listed below:

Mol	Chain	Res	Type	Atoms	Z	Observed(°)	Ideal(°)
2	D	1	NAG	O5-C1-C2	-2.02	108.11	111.29

There are no chirality outliers.

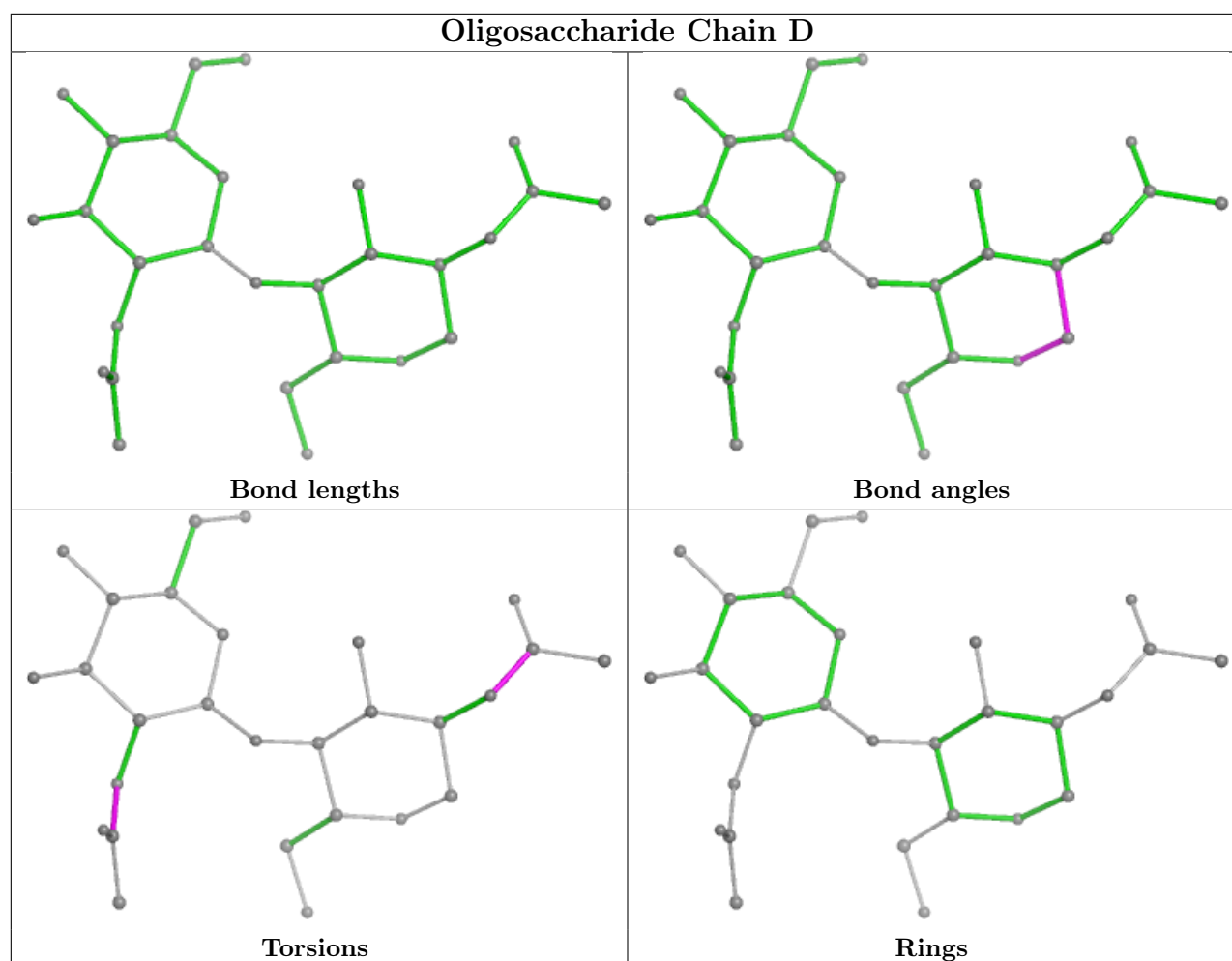
All (4) torsion outliers are listed below:

Mol	Chain	Res	Type	Atoms
2	D	1	NAG	O7-C7-N2-C2
2	D	1	NAG	C8-C7-N2-C2
2	D	2	NAG	C8-C7-N2-C2
2	D	2	NAG	O7-C7-N2-C2

There are no ring outliers.

No monomer is involved in short contacts.

The following is a two-dimensional graphical depiction of Mogul quality analysis of bond lengths, bond angles, torsion angles, and ring geometry for oligosaccharide.



5.6 Ligand geometry [i](#)

28 ligands are modelled in this entry.

In the following table, the Counts columns list the number of bonds (or angles) for which Mogul statistics could be retrieved, the number of bonds (or angles) that are observed in the model and the number of bonds (or angles) that are defined in the Chemical Component Dictionary. The Link column lists molecule types, if any, to which the group is linked. The Z score for a bond length (or angle) is the number of standard deviations the observed value is removed from the expected value. A bond length (or angle) with $|Z| > 2$ is considered an outlier worth inspection. RMSZ is the root-mean-square of all Z scores of the bond lengths (or angles).

Mol	Type	Chain	Res	Link	Bond lengths			Bond angles		
					Counts	RMSZ	$\# Z > 2$	Counts	RMSZ	$\# Z > 2$
3	NAG	B	1304	-	14,14,15	0.38	0	17,19,21	0.66	0
3	NAG	A	2102	1	14,14,15	0.35	0	17,19,21	0.97	1 (5%)
3	NAG	A	2106	-	14,14,15	1.90	3 (21%)	17,19,21	1.12	1 (5%)
3	NAG	B	1308	-	14,14,15	1.96	3 (21%)	17,19,21	1.03	2 (11%)
3	NAG	A	2107	-	14,14,15	1.89	3 (21%)	17,19,21	1.22	1 (5%)

Mol	Type	Chain	Res	Link	Bond lengths			Bond angles		
					Counts	RMSZ	# Z > 2	Counts	RMSZ	# Z > 2
3	NAG	C	1402	-	14,14,15	0.37	0	17,19,21	0.79	0
3	NAG	A	2108	-	14,14,15	1.89	3 (21%)	17,19,21	1.04	0
3	NAG	A	2104	1	14,14,15	1.90	3 (21%)	17,19,21	1.12	1 (5%)
4	EIC	B	1311	-	19,19,19	0.57	0	19,19,19	0.91	0
3	NAG	C	1403	1	14,14,15	0.33	0	17,19,21	0.87	1 (5%)
3	NAG	B	1310	-	14,14,15	0.30	0	17,19,21	0.70	0
3	NAG	B	1301	-	14,14,15	0.29	0	17,19,21	0.84	0
3	NAG	B	1302	-	14,14,15	1.97	3 (21%)	17,19,21	1.06	2 (11%)
3	NAG	B	1309	-	14,14,15	0.39	0	17,19,21	0.99	1 (5%)
3	NAG	A	2101	-	14,14,15	0.38	0	17,19,21	0.88	1 (5%)
3	NAG	C	1406	1	14,14,15	0.42	0	17,19,21	0.94	1 (5%)
3	NAG	B	1307	-	14,14,15	1.94	3 (21%)	17,19,21	1.01	1 (5%)
3	NAG	B	1303	-	14,14,15	1.94	3 (21%)	17,19,21	1.05	1 (5%)
3	NAG	A	2109	-	14,14,15	1.90	3 (21%)	17,19,21	1.16	1 (5%)
3	NAG	B	1306	-	14,14,15	1.98	3 (21%)	17,19,21	0.98	1 (5%)
3	NAG	C	1405	-	14,14,15	0.27	0	17,19,21	0.70	0
4	EIC	A	2110	-	19,19,19	0.57	0	19,19,19	0.92	0
3	NAG	B	1305	-	14,14,15	0.36	0	17,19,21	0.67	0
3	NAG	A	2105	-	14,14,15	1.90	3 (21%)	17,19,21	1.10	2 (11%)
3	NAG	C	1404	-	14,14,15	0.31	0	17,19,21	0.73	0
3	NAG	C	1401	-	14,14,15	1.94	3 (21%)	17,19,21	1.03	1 (5%)
4	EIC	C	1407	-	19,19,19	0.57	0	19,19,19	0.87	0
3	NAG	A	2103	-	14,14,15	1.94	3 (21%)	17,19,21	1.13	2 (11%)

In the following table, the Chirals column lists the number of chiral outliers, the number of chiral centers analysed, the number of these observed in the model and the number defined in the Chemical Component Dictionary. Similar counts are reported in the Torsion and Rings columns. '-' means no outliers of that kind were identified.

Mol	Type	Chain	Res	Link	Chirals	Torsions	Rings
3	NAG	B	1304	-	-	4/6/23/26	0/1/1/1
3	NAG	A	2102	1	-	1/6/23/26	0/1/1/1
3	NAG	A	2106	-	-	0/6/23/26	0/1/1/1
3	NAG	B	1308	-	-	3/6/23/26	0/1/1/1
3	NAG	A	2107	-	-	2/6/23/26	0/1/1/1
3	NAG	C	1402	-	-	4/6/23/26	0/1/1/1
3	NAG	A	2108	-	-	2/6/23/26	0/1/1/1
3	NAG	A	2104	1	-	2/6/23/26	0/1/1/1

Continued on next page...

Continued from previous page...

Mol	Type	Chain	Res	Link	Chirals	Torsions	Rings
4	EIC	B	1311	-	-	9/17/17/17	-
3	NAG	C	1403	1	-	4/6/23/26	0/1/1/1
3	NAG	B	1310	-	-	4/6/23/26	0/1/1/1
3	NAG	B	1301	-	-	2/6/23/26	0/1/1/1
3	NAG	B	1302	-	-	2/6/23/26	0/1/1/1
3	NAG	B	1309	-	-	2/6/23/26	0/1/1/1
3	NAG	A	2101	-	-	2/6/23/26	0/1/1/1
3	NAG	C	1406	1	-	2/6/23/26	0/1/1/1
3	NAG	B	1307	-	-	2/6/23/26	0/1/1/1
3	NAG	B	1303	-	-	2/6/23/26	0/1/1/1
3	NAG	A	2109	-	-	4/6/23/26	0/1/1/1
3	NAG	B	1306	-	-	3/6/23/26	0/1/1/1
3	NAG	C	1405	-	-	1/6/23/26	0/1/1/1
4	EIC	A	2110	-	-	8/17/17/17	-
3	NAG	B	1305	-	-	2/6/23/26	0/1/1/1
3	NAG	A	2105	-	-	0/6/23/26	0/1/1/1
3	NAG	C	1404	-	-	3/6/23/26	0/1/1/1
3	NAG	C	1401	-	-	0/6/23/26	0/1/1/1
4	EIC	C	1407	-	-	7/17/17/17	-
3	NAG	A	2103	-	-	2/6/23/26	0/1/1/1

All (39) bond length outliers are listed below:

Mol	Chain	Res	Type	Atoms	Z	Observed(Å)	Ideal(Å)
3	B	1308	NAG	O5-C1	4.46	1.50	1.43
3	B	1302	NAG	O5-C1	4.37	1.50	1.43
3	C	1401	NAG	O5-C1	4.29	1.50	1.43
3	B	1307	NAG	O5-C1	4.28	1.50	1.43
3	B	1303	NAG	O5-C1	4.28	1.50	1.43
3	A	2104	NAG	O5-C1	4.28	1.50	1.43
3	B	1306	NAG	O5-C1	4.26	1.50	1.43
3	A	2103	NAG	O5-C1	4.25	1.50	1.43
3	A	2109	NAG	O5-C1	4.18	1.50	1.43
3	A	2106	NAG	O5-C1	4.18	1.50	1.43
3	A	2108	NAG	O5-C1	4.17	1.50	1.43
3	A	2105	NAG	O5-C1	4.15	1.50	1.43
3	A	2107	NAG	O5-C1	4.03	1.50	1.43
3	B	1306	NAG	C7-N2	3.88	1.47	1.34

Continued on next page...

Continued from previous page...

Mol	Chain	Res	Type	Atoms	Z	Observed(Å)	Ideal(Å)
3	B	1302	NAG	C7-N2	3.84	1.47	1.34
3	B	1307	NAG	C7-N2	3.84	1.47	1.34
3	B	1303	NAG	C7-N2	3.83	1.47	1.34
3	C	1401	NAG	C7-N2	3.83	1.47	1.34
3	B	1308	NAG	C7-N2	3.83	1.47	1.34
3	A	2106	NAG	C7-N2	3.83	1.47	1.34
3	A	2107	NAG	C7-N2	3.83	1.47	1.34
3	A	2109	NAG	C7-N2	3.82	1.47	1.34
3	A	2103	NAG	C7-N2	3.80	1.47	1.34
3	A	2108	NAG	C7-N2	3.79	1.47	1.34
3	A	2105	NAG	C7-N2	3.78	1.47	1.34
3	A	2104	NAG	C7-N2	3.73	1.47	1.34
3	B	1306	NAG	C2-N2	2.77	1.51	1.46
3	A	2107	NAG	C2-N2	2.61	1.50	1.46
3	B	1302	NAG	C2-N2	2.58	1.50	1.46
3	A	2103	NAG	C2-N2	2.55	1.50	1.46
3	A	2106	NAG	C2-N2	2.55	1.50	1.46
3	B	1307	NAG	C2-N2	2.55	1.50	1.46
3	C	1401	NAG	C2-N2	2.53	1.50	1.46
3	A	2105	NAG	C2-N2	2.53	1.50	1.46
3	B	1303	NAG	C2-N2	2.52	1.50	1.46
3	B	1308	NAG	C2-N2	2.51	1.50	1.46
3	A	2108	NAG	C2-N2	2.50	1.50	1.46
3	A	2109	NAG	C2-N2	2.50	1.50	1.46
3	A	2104	NAG	C2-N2	2.47	1.50	1.46

All (21) bond angle outliers are listed below:

Mol	Chain	Res	Type	Atoms	Z	Observed(°)	Ideal(°)
3	C	1406	NAG	O5-C1-C2	-2.96	106.61	111.29
3	A	2101	NAG	O5-C5-C6	2.68	111.40	107.20
3	A	2102	NAG	C1-O5-C5	2.57	115.67	112.19
3	C	1403	NAG	O5-C5-C6	2.55	111.20	107.20
3	B	1308	NAG	C8-C7-N2	2.35	120.08	116.10
3	A	2103	NAG	C8-C7-N2	2.35	120.07	116.10
3	B	1302	NAG	C8-C7-N2	2.32	120.03	116.10
3	B	1306	NAG	C8-C7-N2	2.30	119.99	116.10
3	A	2107	NAG	C8-C7-N2	2.30	119.99	116.10
3	B	1309	NAG	O5-C5-C6	2.25	110.73	107.20
3	A	2109	NAG	C8-C7-N2	2.23	119.87	116.10
3	A	2105	NAG	C8-C7-N2	2.22	119.85	116.10
3	B	1303	NAG	C8-C7-N2	2.21	119.84	116.10

Continued on next page...

Continued from previous page...

Mol	Chain	Res	Type	Atoms	Z	Observed(°)	Ideal(°)
3	B	1307	NAG	C8-C7-N2	2.19	119.80	116.10
3	B	1308	NAG	C2-N2-C7	-2.17	119.81	122.90
3	B	1302	NAG	C2-N2-C7	-2.11	119.90	122.90
3	A	2106	NAG	C8-C7-N2	2.10	119.66	116.10
3	A	2105	NAG	C2-N2-C7	-2.08	119.94	122.90
3	A	2103	NAG	C2-N2-C7	-2.06	119.97	122.90
3	C	1401	NAG	C8-C7-N2	2.05	119.57	116.10
3	A	2104	NAG	C2-N2-C7	-2.00	120.05	122.90

There are no chirality outliers.

All (79) torsion outliers are listed below:

Mol	Chain	Res	Type	Atoms
3	C	1402	NAG	C8-C7-N2-C2
3	C	1402	NAG	O7-C7-N2-C2
3	C	1405	NAG	C3-C2-N2-C7
3	B	1303	NAG	C3-C2-N2-C7
3	B	1304	NAG	C8-C7-N2-C2
3	B	1304	NAG	O7-C7-N2-C2
3	A	2107	NAG	C3-C2-N2-C7
3	B	1302	NAG	O5-C5-C6-O6
3	A	2103	NAG	O5-C5-C6-O6
3	C	1403	NAG	C8-C7-N2-C2
3	C	1406	NAG	C8-C7-N2-C2
3	C	1406	NAG	O7-C7-N2-C2
3	B	1308	NAG	O5-C5-C6-O6
3	B	1309	NAG	O5-C5-C6-O6
3	A	2109	NAG	C4-C5-C6-O6
3	B	1305	NAG	O5-C5-C6-O6
3	A	2101	NAG	C4-C5-C6-O6
3	C	1403	NAG	O7-C7-N2-C2
3	B	1302	NAG	C4-C5-C6-O6
3	B	1306	NAG	O5-C5-C6-O6
3	B	1307	NAG	C4-C5-C6-O6
3	A	2104	NAG	C4-C5-C6-O6
3	B	1310	NAG	O5-C5-C6-O6
3	B	1305	NAG	C4-C5-C6-O6
3	A	2103	NAG	C4-C5-C6-O6
3	A	2109	NAG	O5-C5-C6-O6
3	C	1402	NAG	O5-C5-C6-O6
3	C	1404	NAG	C1-C2-N2-C7
3	B	1306	NAG	C1-C2-N2-C7

Continued on next page...

Continued from previous page...

Mol	Chain	Res	Type	Atoms
3	C	1403	NAG	O5-C5-C6-O6
3	A	2104	NAG	O5-C5-C6-O6
3	A	2109	NAG	C1-C2-N2-C7
3	C	1402	NAG	C4-C5-C6-O6
3	B	1307	NAG	O5-C5-C6-O6
3	B	1308	NAG	C4-C5-C6-O6
3	B	1306	NAG	C4-C5-C6-O6
4	A	2110	EIC	C3-C4-C5-C6
3	B	1310	NAG	C1-C2-N2-C7
4	C	1407	EIC	C4-C5-C6-C7
3	A	2101	NAG	O5-C5-C6-O6
4	C	1407	EIC	C3-C4-C5-C6
4	A	2110	EIC	C4-C5-C6-C7
3	B	1301	NAG	C8-C7-N2-C2
4	B	1311	EIC	C6-C7-C8-C9
3	A	2108	NAG	C4-C5-C6-O6
3	C	1403	NAG	C4-C5-C6-O6
3	C	1404	NAG	C4-C5-C6-O6
4	B	1311	EIC	C2-C3-C4-C5
3	B	1308	NAG	C3-C2-N2-C7
3	B	1310	NAG	C3-C2-N2-C7
4	B	1311	EIC	C3-C4-C5-C6
3	C	1404	NAG	O5-C5-C6-O6
3	B	1301	NAG	O7-C7-N2-C2
3	B	1310	NAG	C4-C5-C6-O6
3	A	2108	NAG	O5-C5-C6-O6
3	A	2107	NAG	C1-C2-N2-C7
4	B	1311	EIC	C5-C6-C7-C8
4	A	2110	EIC	O1-C1-C2-C3
4	C	1407	EIC	O1-C1-C2-C3
4	A	2110	EIC	O2-C1-C2-C3
3	B	1303	NAG	C1-C2-N2-C7
3	B	1309	NAG	C4-C5-C6-O6
3	B	1304	NAG	C4-C5-C6-O6
3	B	1304	NAG	O5-C5-C6-O6
4	C	1407	EIC	C9-C10-C11-C12
4	C	1407	EIC	C10-C11-C12-C13
4	B	1311	EIC	C9-C10-C11-C12
4	B	1311	EIC	C10-C11-C12-C13
4	A	2110	EIC	C9-C10-C11-C12
4	A	2110	EIC	C10-C11-C12-C13
4	C	1407	EIC	O2-C1-C2-C3

Continued on next page...

Continued from previous page...

Mol	Chain	Res	Type	Atoms
4	B	1311	EIC	O2-C1-C2-C3
4	B	1311	EIC	O1-C1-C2-C3
4	C	1407	EIC	C7-C8-C9-C10
4	A	2110	EIC	C7-C8-C9-C10
3	A	2102	NAG	O5-C5-C6-O6
4	A	2110	EIC	C2-C3-C4-C5
3	A	2109	NAG	C3-C2-N2-C7
4	B	1311	EIC	C7-C8-C9-C10

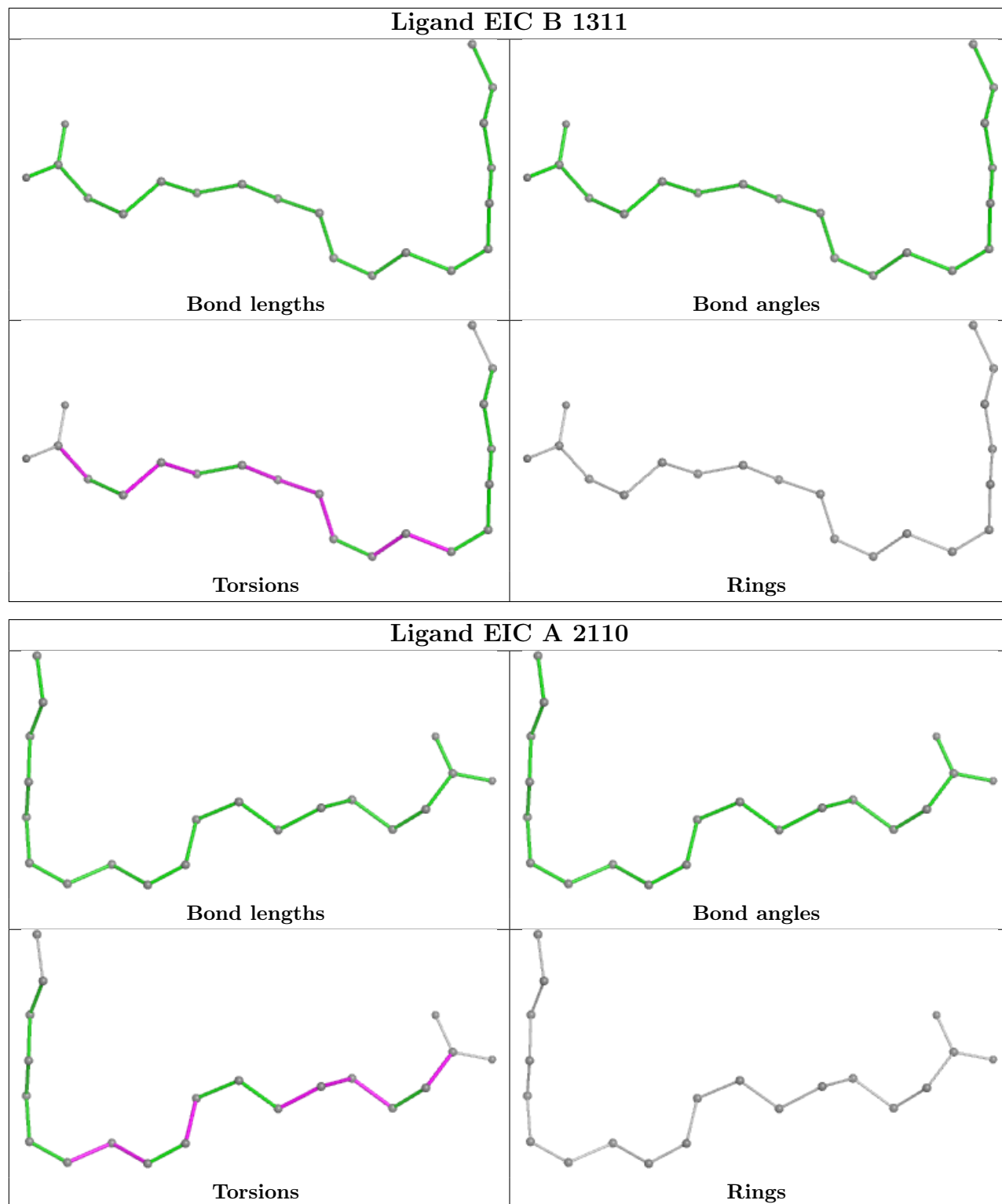
There are no ring outliers.

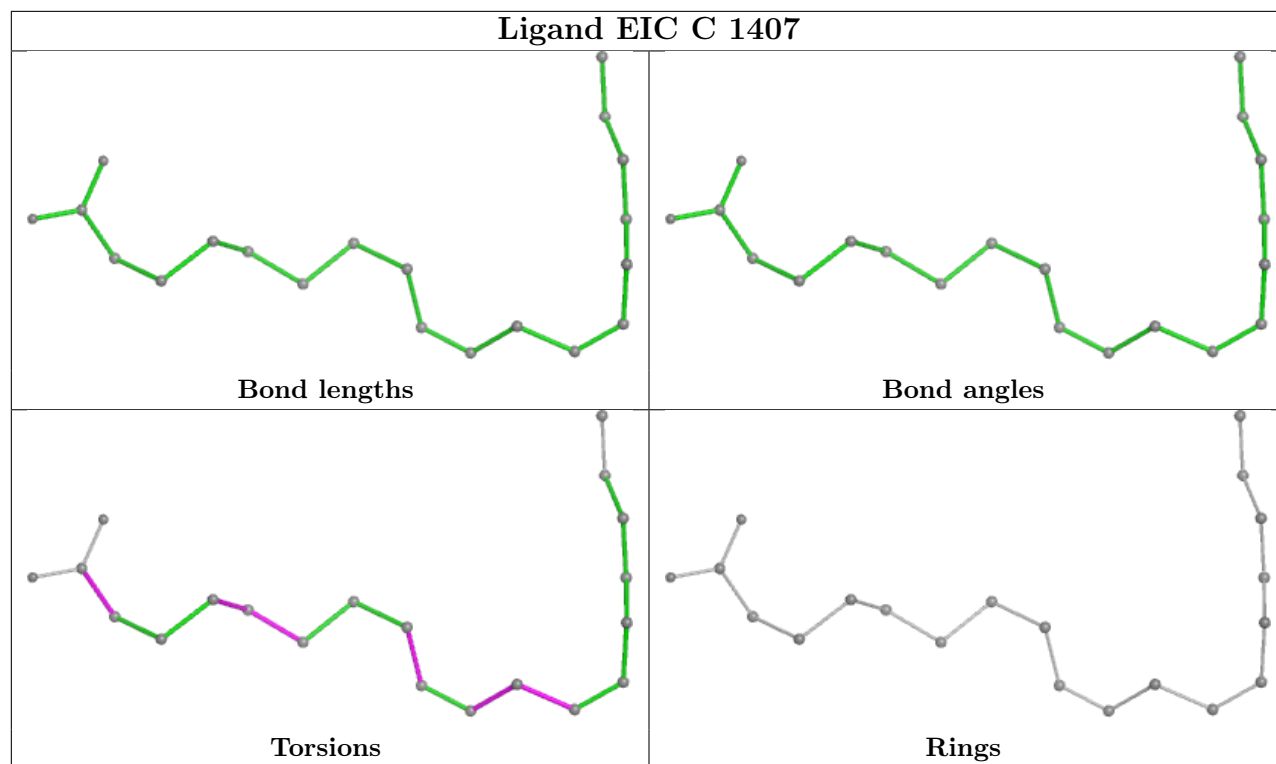
17 monomers are involved in 50 short contacts:

Mol	Chain	Res	Type	Clashes	Symm-Clashes
3	A	2102	NAG	1	0
3	A	2106	NAG	4	0
3	A	2107	NAG	1	0
3	C	1402	NAG	2	0
3	A	2108	NAG	1	0
3	B	1310	NAG	8	0
3	B	1301	NAG	4	0
3	B	1302	NAG	3	0
3	B	1309	NAG	6	0
3	A	2101	NAG	3	0
3	B	1303	NAG	1	0
3	A	2109	NAG	2	0
3	C	1405	NAG	4	0
3	B	1305	NAG	5	0
3	C	1404	NAG	4	0
3	C	1401	NAG	2	0
3	A	2103	NAG	1	0

The following is a two-dimensional graphical depiction of Mogul quality analysis of bond lengths, bond angles, torsion angles, and ring geometry for all instances of the Ligand of Interest. In addition, ligands with molecular weight > 250 and outliers as shown on the validation Tables will also be included. For torsion angles, if less than 5% of the Mogul distribution of torsion angles is within 10 degrees of the torsion angle in question, then that torsion angle is considered an outlier. Any bond that is central to one or more torsion angles identified as an outlier by Mogul will be highlighted in the graph. For rings, the root-mean-square deviation (RMSD) between the ring in question and similar rings identified by Mogul is calculated over all ring torsion angles. If the average RMSD is greater than 60 degrees and the minimal RMSD between the ring in question and any Mogul-identified rings is also greater than 60 degrees, then that ring is considered an outlier. The outliers are highlighted in purple. The color gray indicates Mogul did not find sufficient

equivalents in the CSD to analyse the geometry.





5.7 Other polymers [i](#)

There are no such residues in this entry.

5.8 Polymer linkage issues [i](#)

There are no chain breaks in this entry.

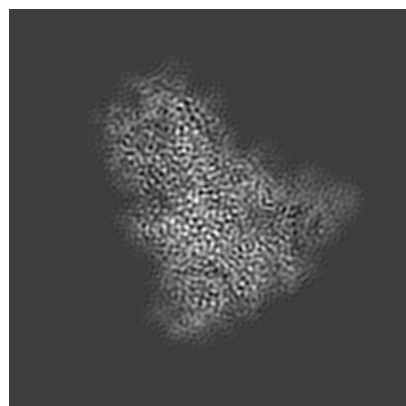
6 Map visualisation [i](#)

This section contains visualisations of the EMDB entry EMD-11144. These allow visual inspection of the internal detail of the map and identification of artifacts.

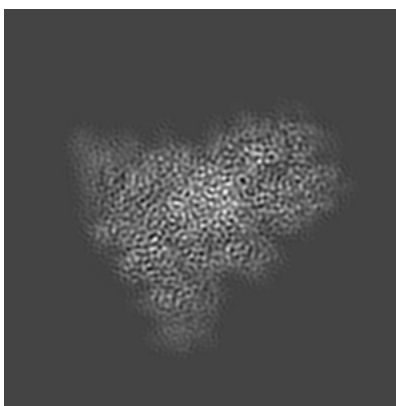
Images derived from a raw map, generated by summing the deposited half-maps, are presented below the corresponding image components of the primary map to allow further visual inspection and comparison with those of the primary map.

6.1 Orthogonal projections [i](#)

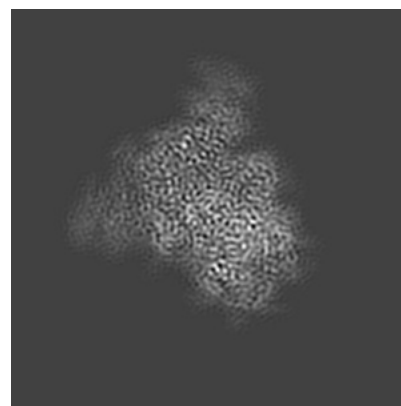
6.1.1 Primary map



X

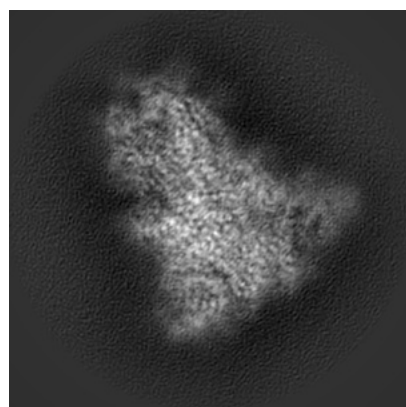


Y

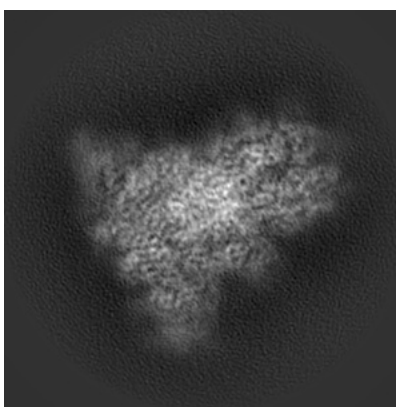


Z

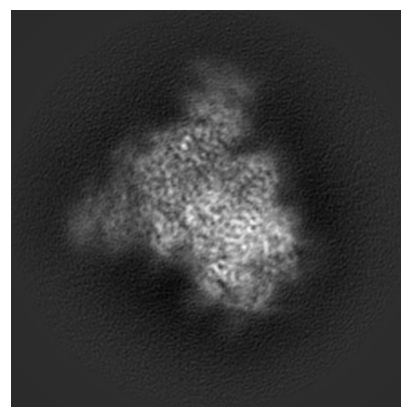
6.1.2 Raw map



X



Y

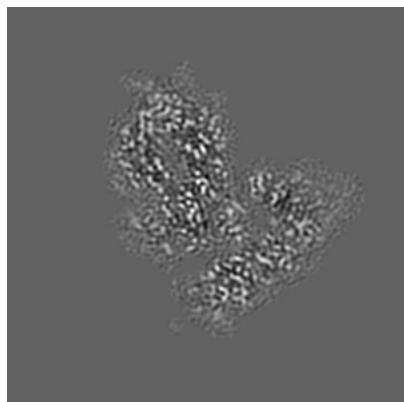


Z

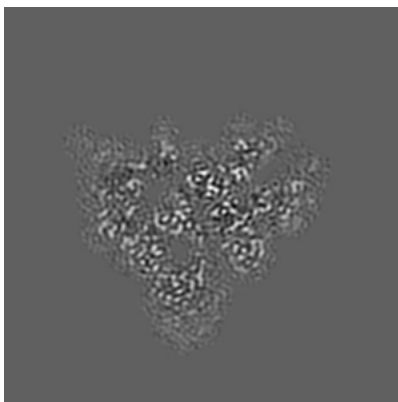
The images above show the map projected in three orthogonal directions.

6.2 Central slices [i](#)

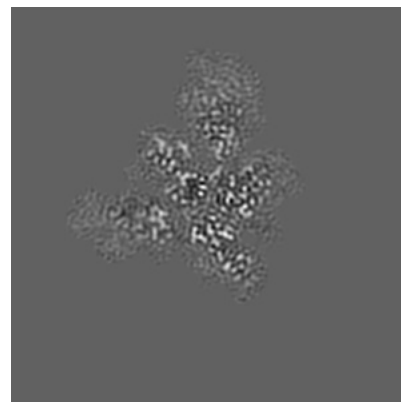
6.2.1 Primary map



X Index: 110

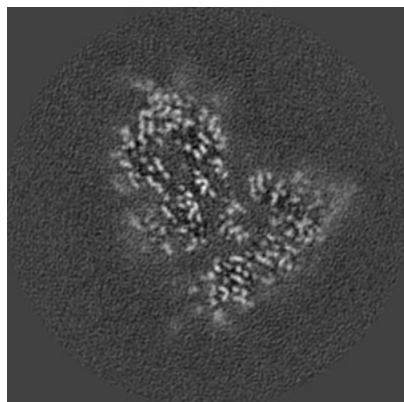


Y Index: 110

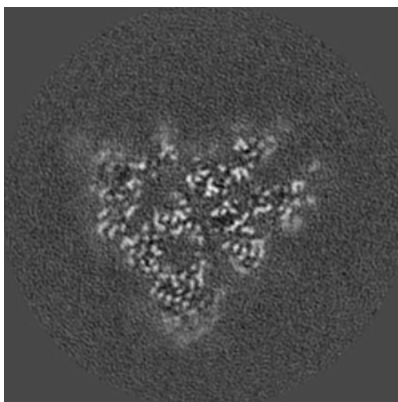


Z Index: 110

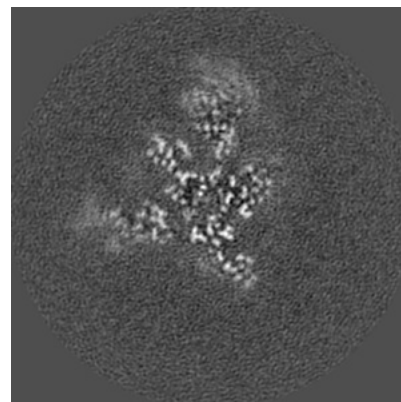
6.2.2 Raw map



X Index: 110



Y Index: 110

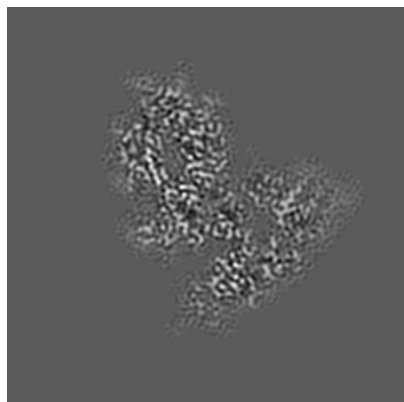


Z Index: 110

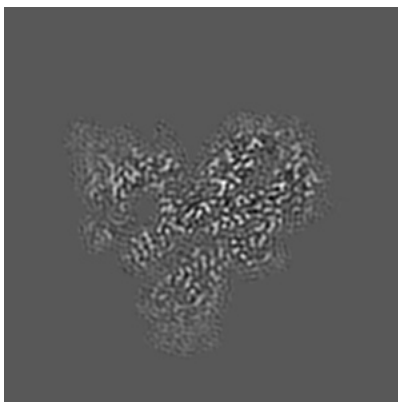
The images above show central slices of the map in three orthogonal directions.

6.3 Largest variance slices [i](#)

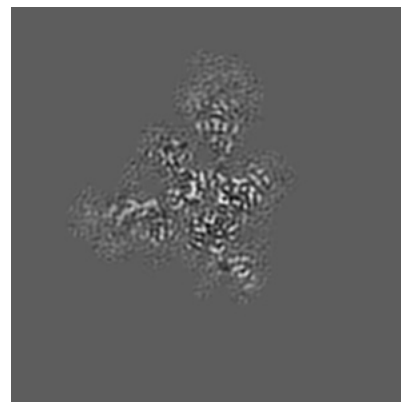
6.3.1 Primary map



X Index: 112

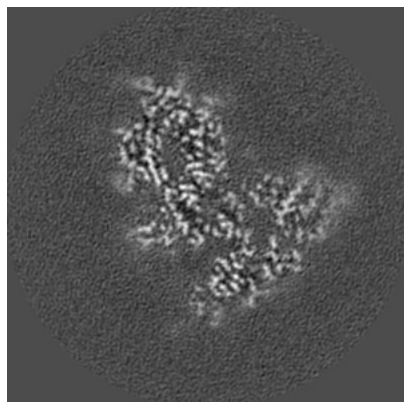


Y Index: 103

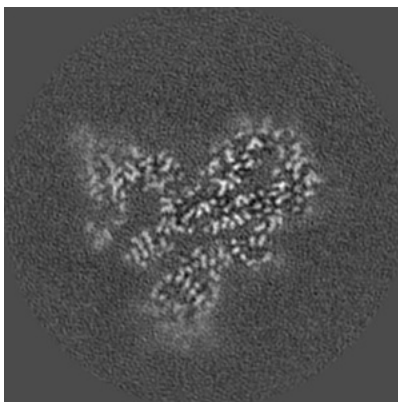


Z Index: 108

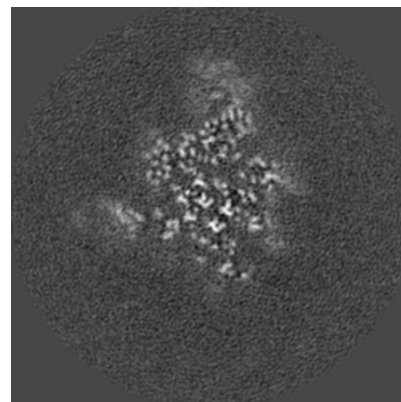
6.3.2 Raw map



X Index: 112



Y Index: 103

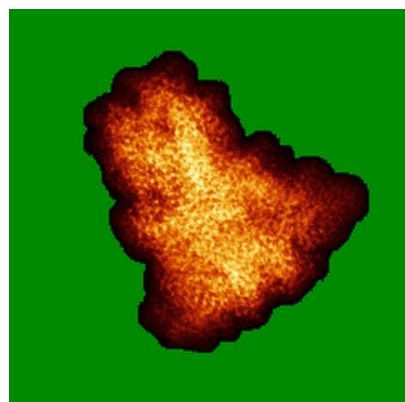


Z Index: 116

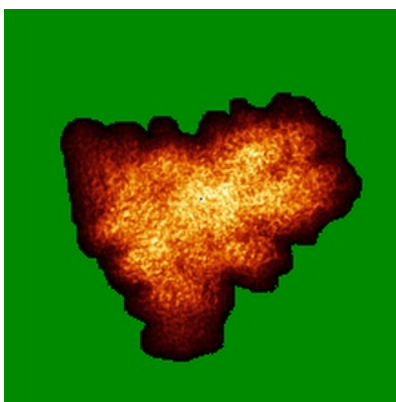
The images above show the largest variance slices of the map in three orthogonal directions.

6.4 Orthogonal standard-deviation projections (False-color) [i](#)

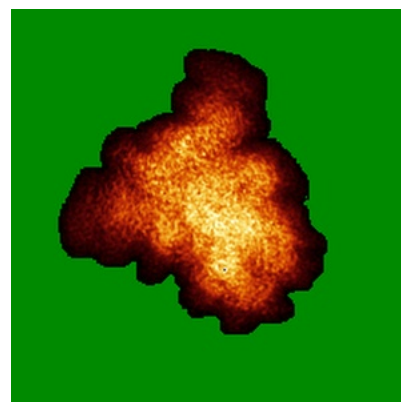
6.4.1 Primary map



X

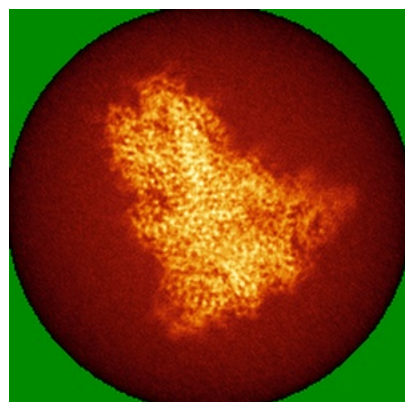


Y

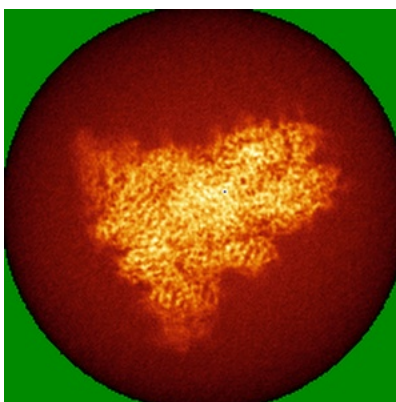


Z

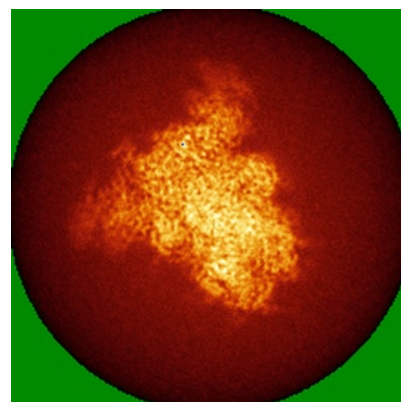
6.4.2 Raw map



X



Y

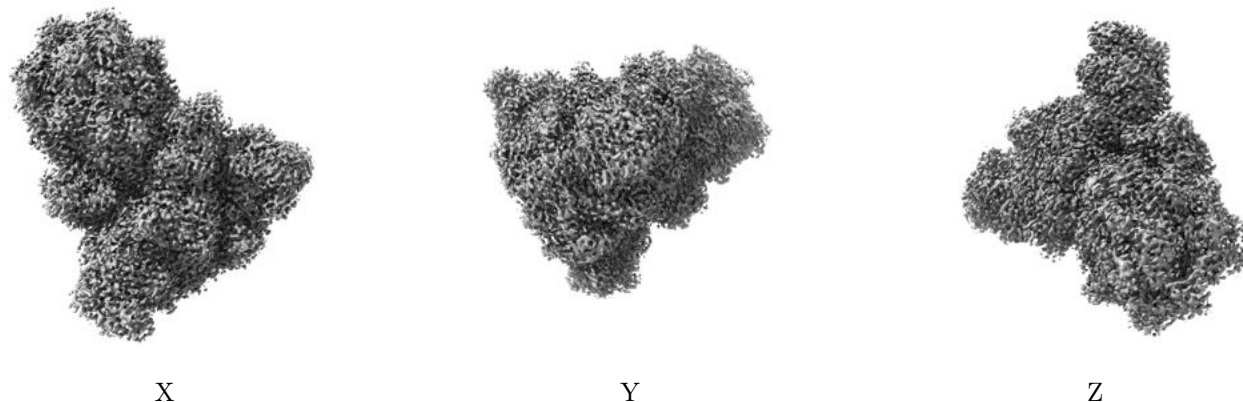


Z

The images above show the map standard deviation projections with false color in three orthogonal directions. Minimum values are shown in green, max in blue, and dark to light orange shades represent small to large values respectively.

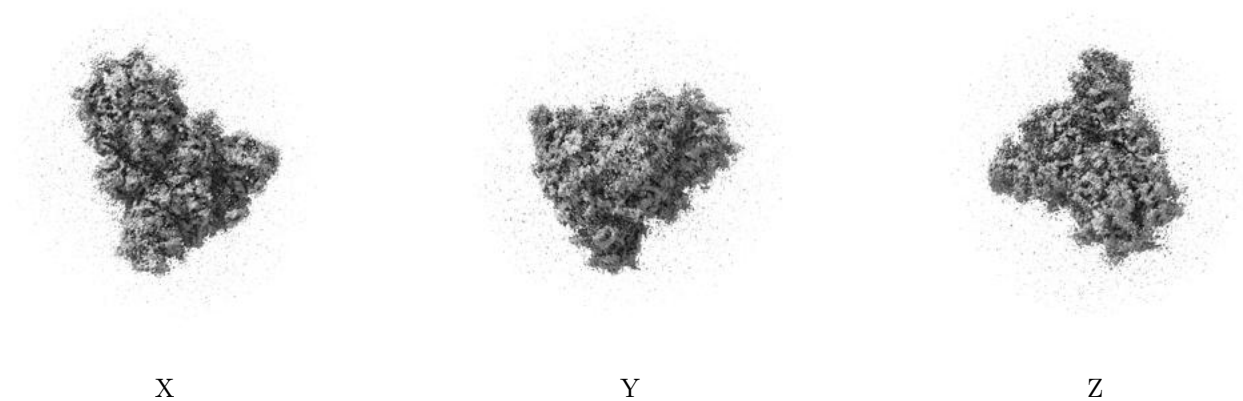
6.5 Orthogonal surface views [i](#)

6.5.1 Primary map



The images above show the 3D surface view of the map at the recommended contour level 0.016. These images, in conjunction with the slice images, may facilitate assessment of whether an appropriate contour level has been provided.

6.5.2 Raw map



These images show the 3D surface of the raw map. The raw map's contour level was selected so that its surface encloses the same volume as the primary map does at its recommended contour level.

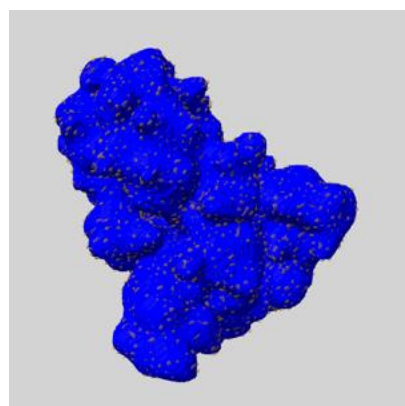
6.6 Mask visualisation [i](#)

This section shows the 3D surface view of the primary map at 50% transparency overlaid with the specified mask at 0% transparency

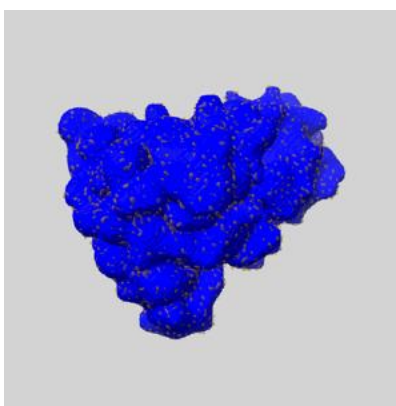
A mask typically either:

- Encompasses the whole structure
- Separates out a domain, a functional unit, a monomer or an area of interest from a larger structure

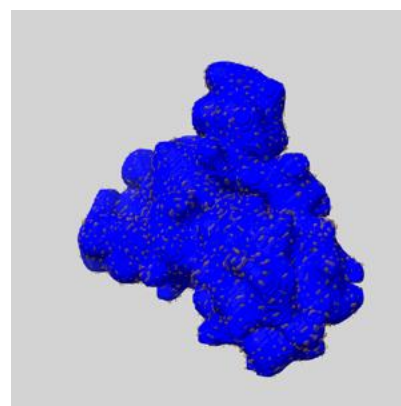
6.6.1 emd_11144_msk_1.map [i](#)



X



Y

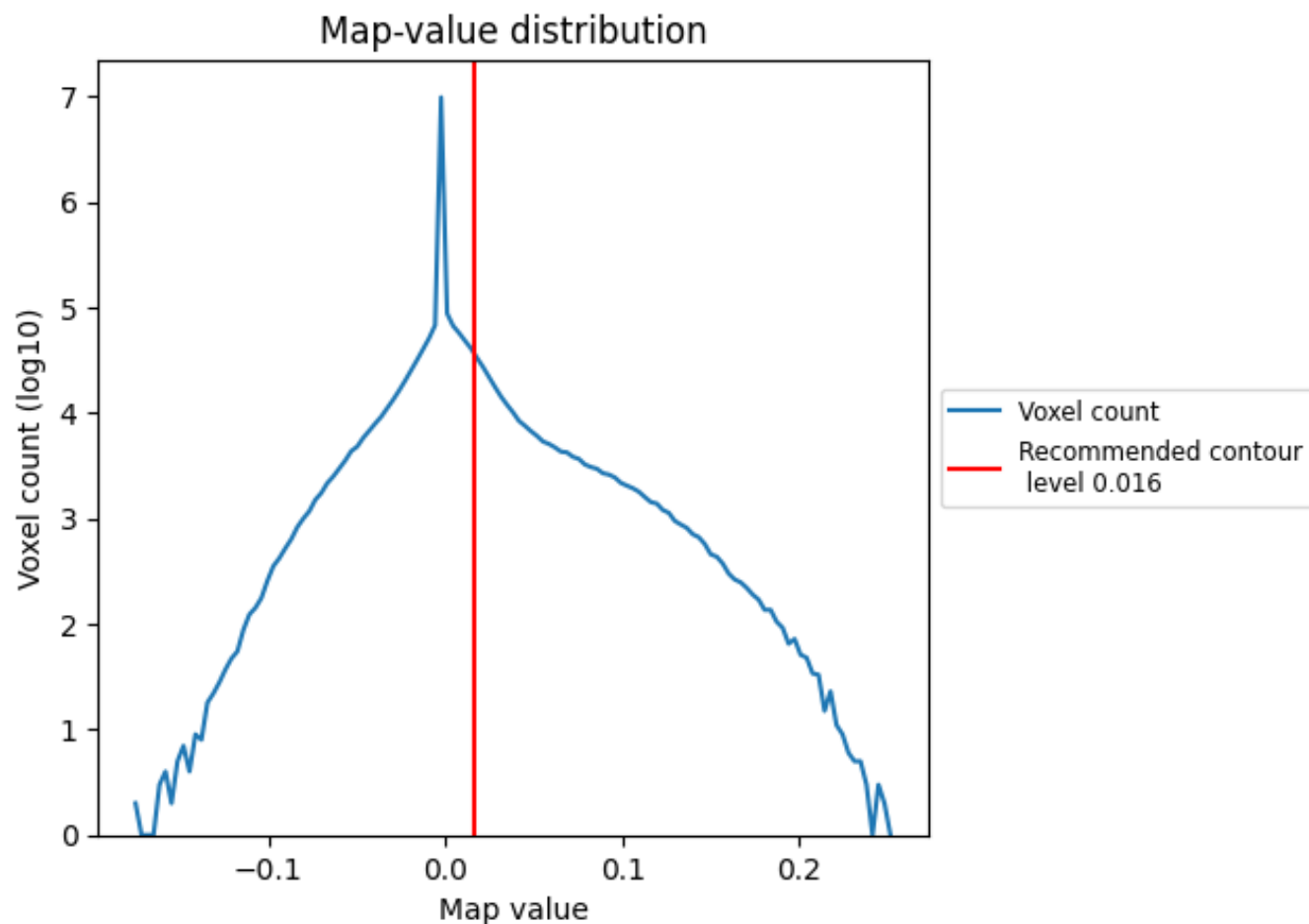


Z

7 Map analysis [i](#)

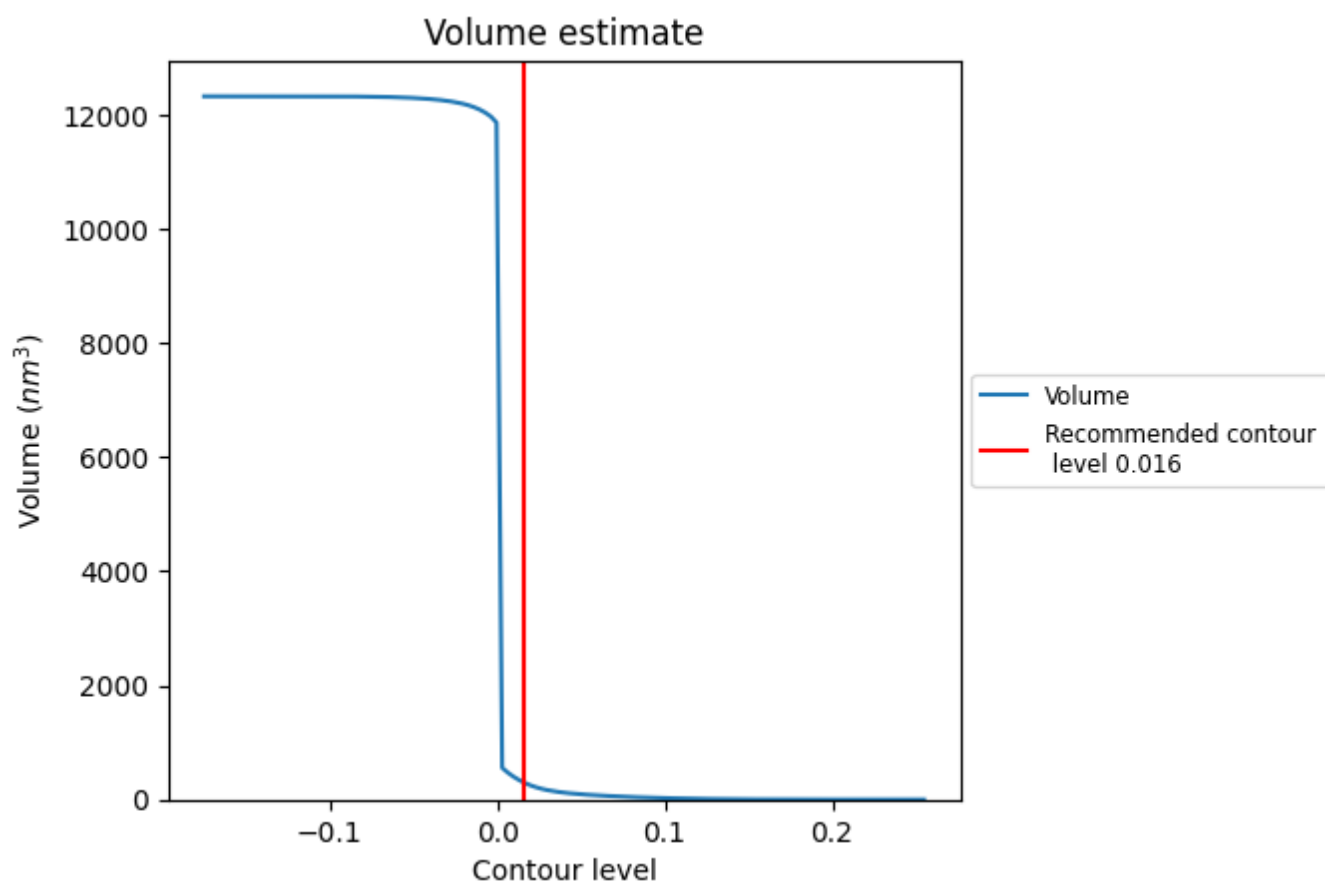
This section contains the results of statistical analysis of the map.

7.1 Map-value distribution [i](#)



The map-value distribution is plotted in 128 intervals along the x-axis. The y-axis is logarithmic. A spike in this graph at zero usually indicates that the volume has been masked.

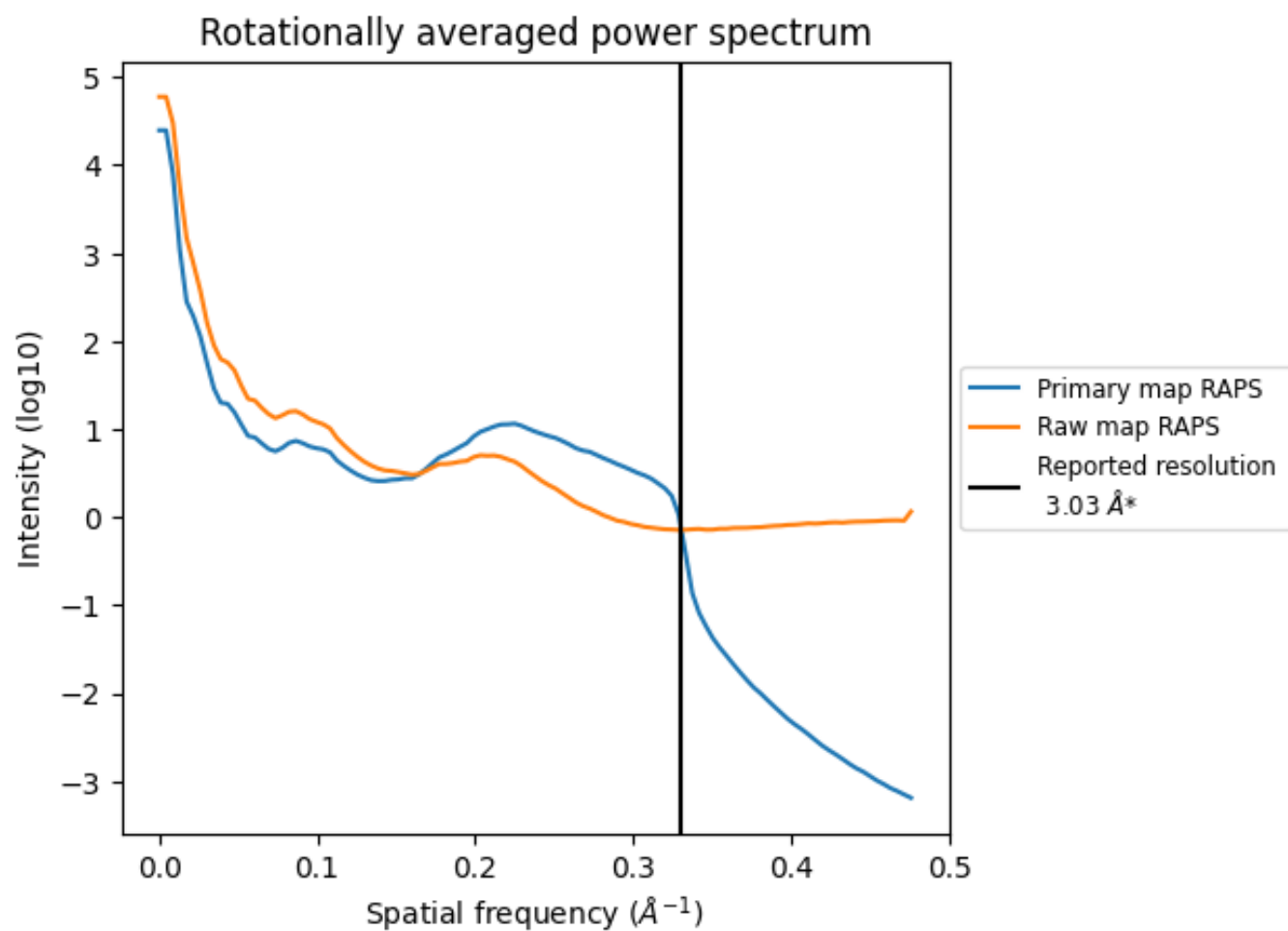
7.2 Volume estimate [i](#)



The volume at the recommended contour level is 299 nm³; this corresponds to an approximate mass of 270 kDa.

The volume estimate graph shows how the enclosed volume varies with the contour level. The recommended contour level is shown as a vertical line and the intersection between the line and the curve gives the volume of the enclosed surface at the given level.

7.3 Rotationally averaged power spectrum ⓘ

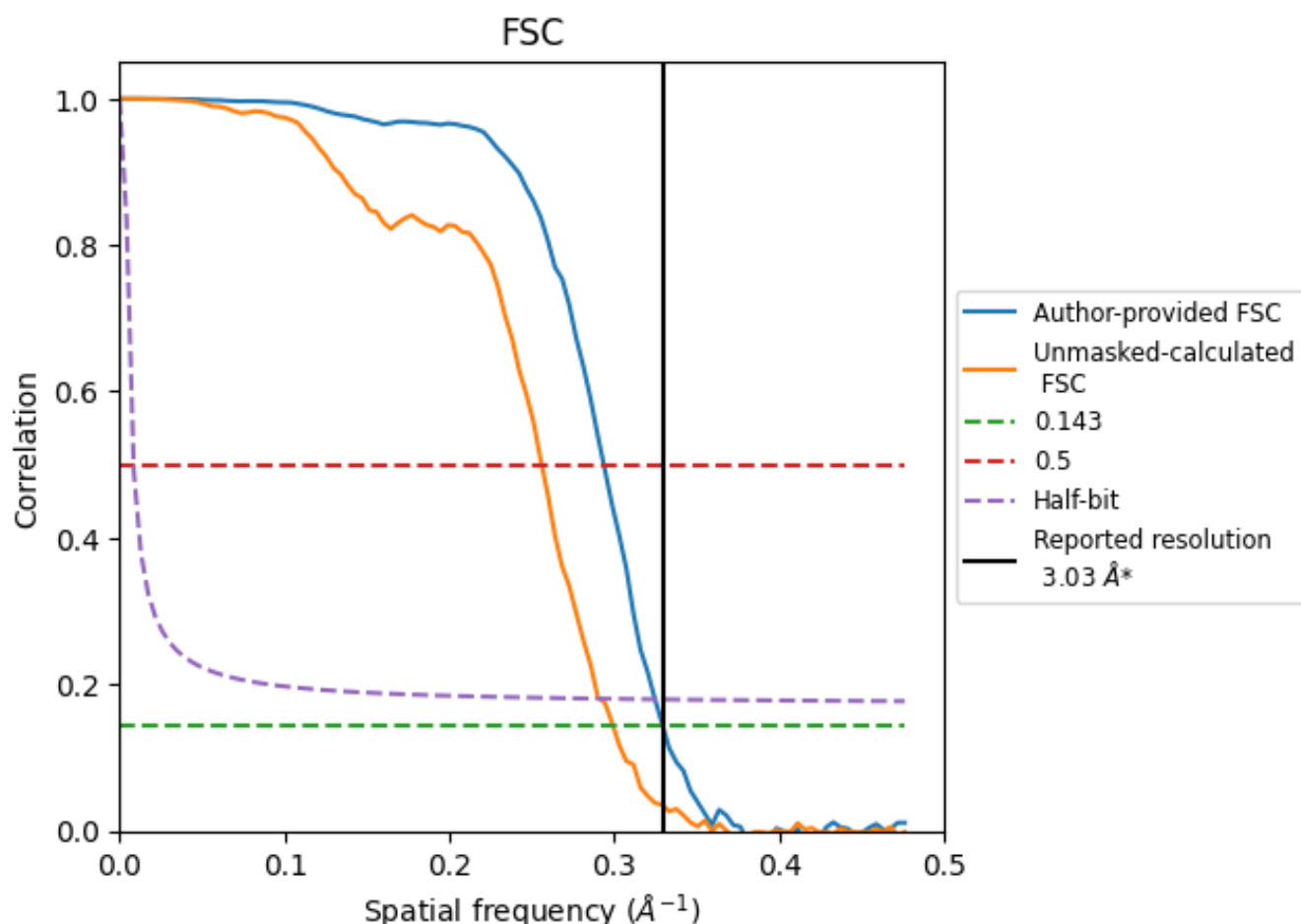


*Reported resolution corresponds to spatial frequency of 0.330 Å⁻¹

8 Fourier-Shell correlation [i](#)

Fourier-Shell Correlation (FSC) is the most commonly used method to estimate the resolution of single-particle and subtomogram-averaged maps. The shape of the curve depends on the imposed symmetry, mask and whether or not the two 3D reconstructions used were processed from a common reference. The reported resolution is shown as a black line. A curve is displayed for the half-bit criterion in addition to lines showing the 0.143 gold standard cut-off and 0.5 cut-off.

8.1 FSC [i](#)



*Reported resolution corresponds to spatial frequency of 0.330 Å⁻¹

8.2 Resolution estimates [i](#)

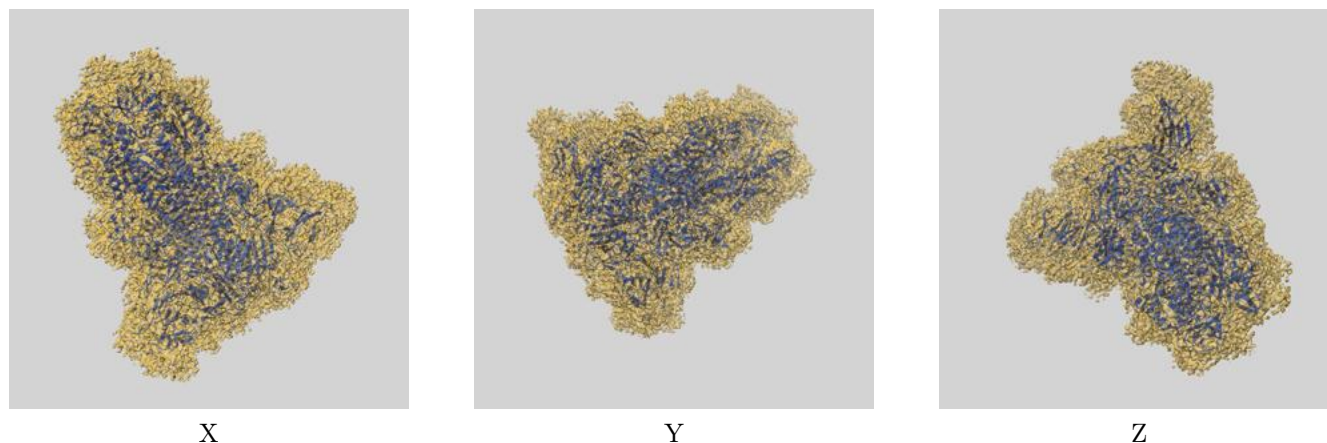
Resolution estimate (Å)	Estimation criterion (FSC cut-off)		
	0.143	0.5	Half-bit
Reported by author	3.03	-	-
Author-provided FSC curve	3.04	3.40	3.08
Unmasked-calculated*	3.34	3.91	3.43

*Resolution estimate based on FSC curve calculated by comparison of deposited half-maps. The value from deposited half-maps intersecting FSC 0.143 CUT-OFF 3.34 differs from the reported value 3.03 by more than 10 %

9 Map-model fit [i](#)

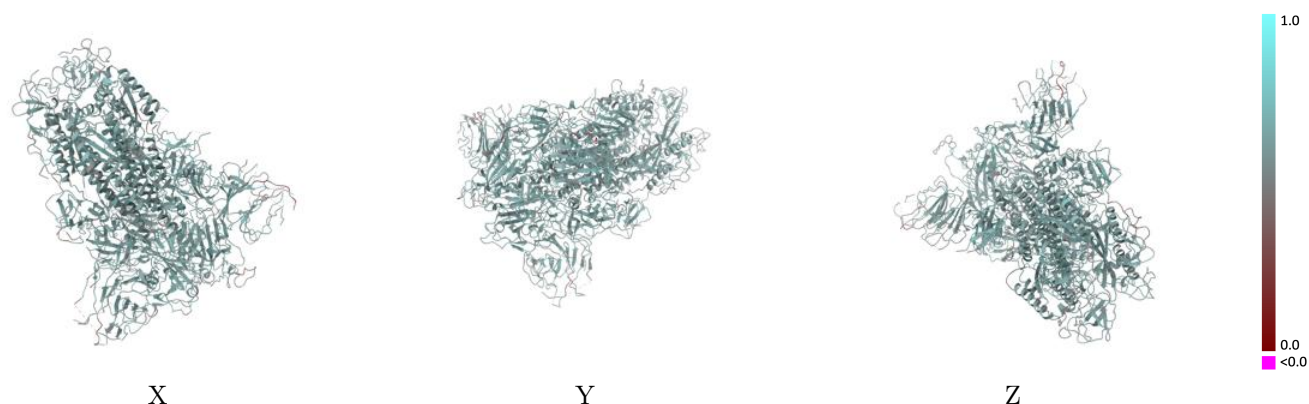
This section contains information regarding the fit between EMDB map EMD-11144 and PDB model 6ZB4. Per-residue inclusion information can be found in section [3](#) on page [10](#).

9.1 Map-model overlay [i](#)



The images above show the 3D surface view of the map at the recommended contour level 0.016 at 50% transparency in yellow overlaid with a ribbon representation of the model coloured in blue. These images allow for the visual assessment of the quality of fit between the atomic model and the map.

9.2 Q-score mapped to coordinate model [i](#)



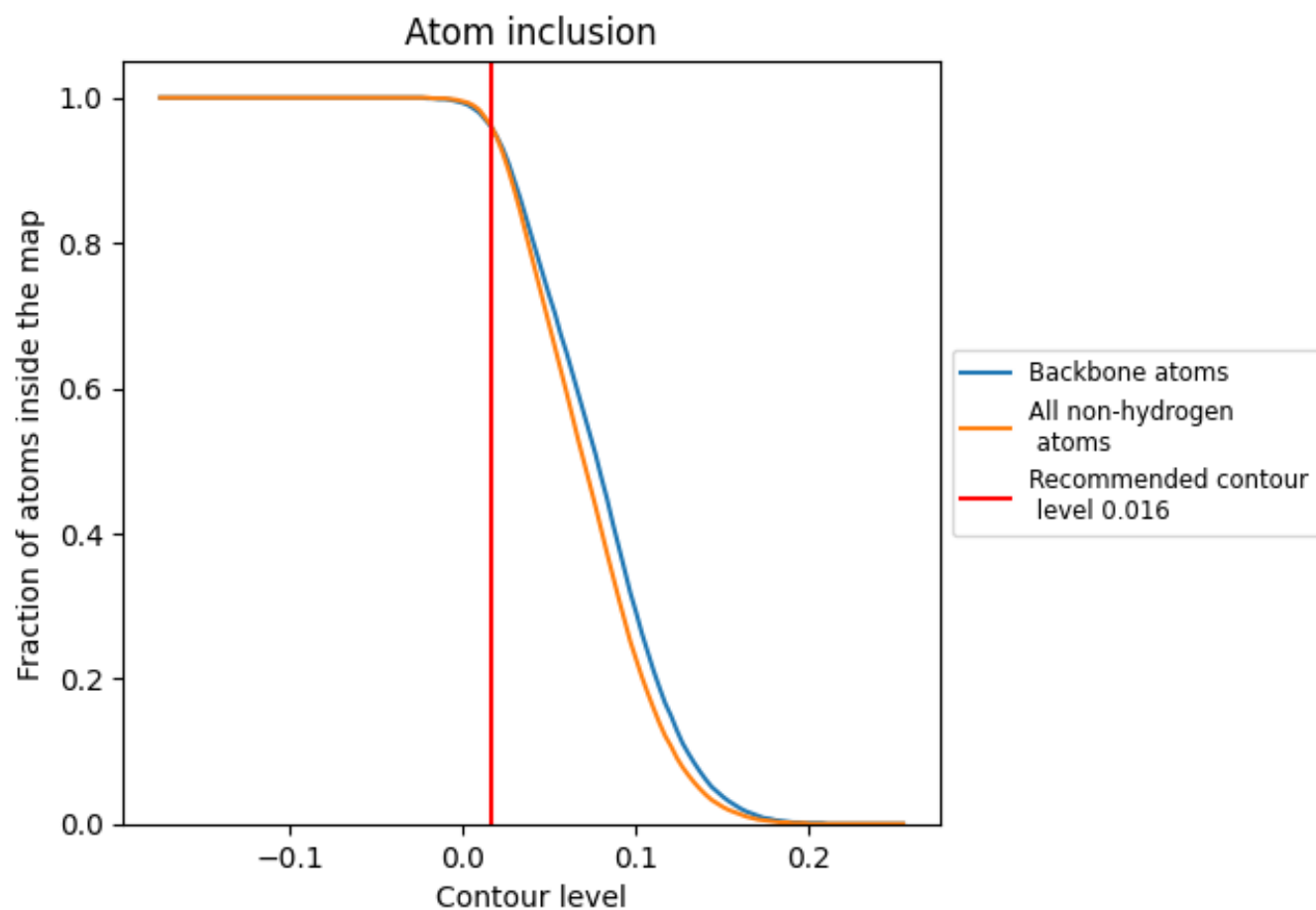
The images above show the model with each residue coloured according to its Q-score. This shows their resolvability in the map with higher Q-score values reflecting better resolvability. Please note: Q-score is calculating the resolvability of atoms, and thus high values are only expected at resolutions at which atoms can be resolved. Low Q-score values may therefore be expected for many entries.

9.3 Atom inclusion mapped to coordinate model [i](#)



The images above show the model with each residue coloured according to its atom inclusion. This shows to what extent they are inside the map at the recommended contour level (0.016).

9.4 Atom inclusion [i](#)



At the recommended contour level, 96% of all backbone atoms, 96% of all non-hydrogen atoms, are inside the map.

9.5 Map-model fit summary ⓘ

The table lists the average atom inclusion at the recommended contour level (0.016) and Q-score for the entire model and for each chain.

Chain	Atom inclusion	Q-score
All	<div></div> 0.9630	<div></div> 0.5870
A	<div></div> 0.9650	<div></div> 0.5880
B	<div></div> 0.9600	<div></div> 0.5830
C	<div></div> 0.9640	<div></div> 0.5890
D	<div></div> 1.0000	<div></div> 0.5840

