



Full wwPDB EM Validation Report ⓘ

Apr 14, 2025 – 12:11 PM JST

PDB ID : 8Z9X / pdb_00008z9x
EMDB ID : EMD-39871
Title : Cryo-EM structure of Phytanoyl-CoA-bound human very long-chain fatty acid ABC transporter ABCD3
Authors : Li, Y.; Chen, Y.X.; Zhou, C.Z.; Hou, W.T.
Deposited on : 2024-04-23
Resolution : 2.96 Å(reported)

This is a Full wwPDB EM Validation Report for a publicly released PDB entry.

We welcome your comments at validation@mail.wwpdb.org

A user guide is available at

<https://www.wwpdb.org/validation/2017/EMValidationReportHelp>
with specific help available everywhere you see the ⓘ symbol.

The types of validation reports are described at

<http://www.wwpdb.org/validation/2017/FAQs#types>.

The following versions of software and data (see [references ⓘ](#)) were used in the production of this report:

EMDB validation analysis : 0.0.1.dev117
Mogul : 1.8.5 (274361), CSD as541be (2020)
MolProbity : 4.02b-467
buster-report : 1.1.7 (2018)
Percentile statistics : 20231227.v01 (using entries in the PDB archive December 27th 2023)
MapQ : 1.9.13
Ideal geometry (proteins) : Engh & Huber (2001)
Ideal geometry (DNA, RNA) : Parkinson et al. (1996)
Validation Pipeline (wwPDB-VP) : 2.42

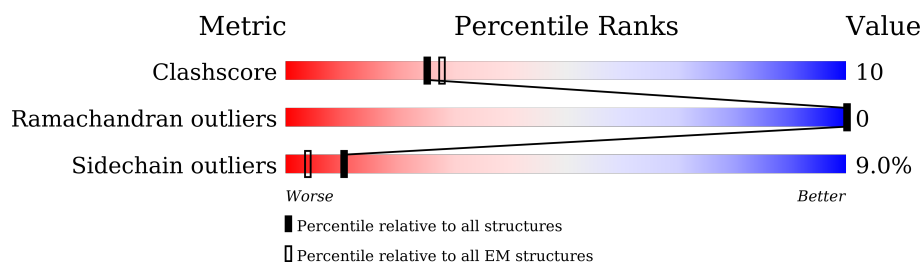
1 Overall quality at a glance

The following experimental techniques were used to determine the structure:

ELECTRON MICROSCOPY

The reported resolution of this entry is 2.96 Å.

Percentile scores (ranging between 0-100) for global validation metrics of the entry are shown in the following graphic. The table shows the number of entries on which the scores are based.



Metric	Whole archive (#Entries)	EM structures (#Entries)
Clashscore	210492	15764
Ramachandran outliers	207382	16835
Sidechain outliers	206894	16415

The table below summarises the geometric issues observed across the polymeric chains and their fit to the map. The red, orange, yellow and green segments of the bar indicate the fraction of residues that contain outliers for ≥ 3 , 2, 1 and 0 types of geometric quality criteria respectively. A grey segment represents the fraction of residues that are not modelled. The numeric value for each fraction is indicated below the corresponding segment, with a dot representing fractions $\leq 5\%$. The upper red bar (where present) indicates the fraction of residues that have poor fit to the EM map (all-atom inclusion $< 40\%$). The numeric value is given above the bar.

Mol	Chain	Length	Quality of chain
1	A	668	<div> <div>20%</div> <div>62%</div> <div>20%</div> <div>•</div> <div>15%</div> </div>
1	B	668	<div> <div>21%</div> <div>61%</div> <div>22%</div> <div>•</div> <div>15%</div> </div>

2 Entry composition

There are 2 unique types of molecules in this entry. The entry contains 9344 atoms, of which 0 are hydrogens and 0 are deuteriums.

In the tables below, the AltConf column contains the number of residues with at least one atom in alternate conformation and the Trace column contains the number of residues modelled with at most 2 atoms.

- Molecule 1 is a protein called ATP-binding cassette sub-family D member 3.

Mol	Chain	Residues	Atoms					AltConf	Trace
1	B	567	Total	C	N	O	S	0	0
			4603	2970	796	811	26		
1	A	567	Total	C	N	O	S	0	0
			4603	2970	796	811	26		

There are 116 discrepancies between the modelled and reference sequences:

Chain	Residue	Modelled	Actual	Comment	Reference
B	-8	MET	-	initiating methionine	UNP P28288
B	-7	ASP	-	expression tag	UNP P28288
B	-6	TYR	-	expression tag	UNP P28288
B	-5	LYS	-	expression tag	UNP P28288
B	-4	ASP	-	expression tag	UNP P28288
B	-3	ASP	-	expression tag	UNP P28288
B	-2	ASP	-	expression tag	UNP P28288
B	-1	ASP	-	expression tag	UNP P28288
B	0	LYS	-	expression tag	UNP P28288
B	1	ALA	-	expression tag	UNP P28288
B	2	VAL	-	expression tag	UNP P28288
B	3	PHE	-	expression tag	UNP P28288
B	4	SER	-	expression tag	UNP P28288
B	5	LYS	-	expression tag	UNP P28288
B	6	LEU	-	expression tag	UNP P28288
B	7	GLN	-	expression tag	UNP P28288
B	8	LEU	-	expression tag	UNP P28288
B	9	LEU	-	expression tag	UNP P28288
B	10	GLY	-	expression tag	UNP P28288
B	11	GLN	-	expression tag	UNP P28288
B	12	ALA	-	expression tag	UNP P28288
B	13	ILE	-	expression tag	UNP P28288
B	14	PRO	-	expression tag	UNP P28288
B	15	PRO	-	expression tag	UNP P28288
B	16	LYS	-	expression tag	UNP P28288
B	17	GLN	-	expression tag	UNP P28288

Continued on next page...

Continued from previous page...

Chain	Residue	Modelled	Actual	Comment	Reference
B	18	TYR	-	expression tag	UNP P28288
B	19	ALA	-	expression tag	UNP P28288
B	20	PRO	-	expression tag	UNP P28288
B	21	GLY	-	expression tag	UNP P28288
B	22	VAL	-	expression tag	UNP P28288
B	23	VAL	-	expression tag	UNP P28288
B	24	GLY	-	expression tag	UNP P28288
B	25	MET	-	expression tag	UNP P28288
B	26	LEU	-	expression tag	UNP P28288
B	27	ALA	-	expression tag	UNP P28288
B	28	VAL	-	expression tag	UNP P28288
B	29	PHE	-	expression tag	UNP P28288
B	30	ALA	-	expression tag	UNP P28288
B	31	LEU	-	expression tag	UNP P28288
B	32	ILE	-	expression tag	UNP P28288
B	33	LYS	-	expression tag	UNP P28288
B	34	LEU	-	expression tag	UNP P28288
B	35	TYR	-	expression tag	UNP P28288
B	36	LYS	-	expression tag	UNP P28288
B	37	GLN	-	expression tag	UNP P28288
B	38	ASP	-	expression tag	UNP P28288
B	39	ILE	-	expression tag	UNP P28288
B	40	ARG	-	expression tag	UNP P28288
B	41	GLY	-	expression tag	UNP P28288
B	42	THR	-	expression tag	UNP P28288
B	43	LYS	-	expression tag	UNP P28288
B	44	HIS	-	expression tag	UNP P28288
B	45	LEU	-	expression tag	UNP P28288
B	46	VAL	-	expression tag	UNP P28288
B	47	ALA	-	expression tag	UNP P28288
B	48	LYS	-	expression tag	UNP P28288
B	49	THR	-	expression tag	UNP P28288
A	-8	MET	-	initiating methionine	UNP P28288
A	-7	ASP	-	expression tag	UNP P28288
A	-6	TYR	-	expression tag	UNP P28288
A	-5	LYS	-	expression tag	UNP P28288
A	-4	ASP	-	expression tag	UNP P28288
A	-3	ASP	-	expression tag	UNP P28288
A	-2	ASP	-	expression tag	UNP P28288
A	-1	ASP	-	expression tag	UNP P28288
A	0	LYS	-	expression tag	UNP P28288
A	1	ALA	-	expression tag	UNP P28288

Continued on next page...

Continued from previous page...

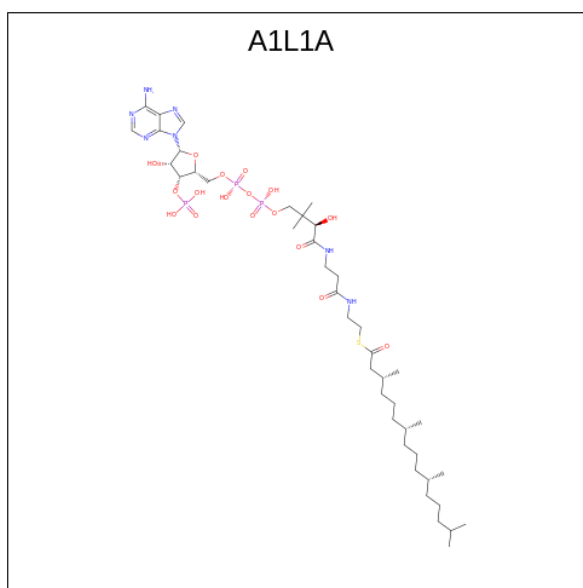
Chain	Residue	Modelled	Actual	Comment	Reference
A	2	VAL	-	expression tag	UNP P28288
A	3	PHE	-	expression tag	UNP P28288
A	4	SER	-	expression tag	UNP P28288
A	5	LYS	-	expression tag	UNP P28288
A	6	LEU	-	expression tag	UNP P28288
A	7	GLN	-	expression tag	UNP P28288
A	8	LEU	-	expression tag	UNP P28288
A	9	LEU	-	expression tag	UNP P28288
A	10	GLY	-	expression tag	UNP P28288
A	11	GLN	-	expression tag	UNP P28288
A	12	ALA	-	expression tag	UNP P28288
A	13	ILE	-	expression tag	UNP P28288
A	14	PRO	-	expression tag	UNP P28288
A	15	PRO	-	expression tag	UNP P28288
A	16	LYS	-	expression tag	UNP P28288
A	17	GLN	-	expression tag	UNP P28288
A	18	TYR	-	expression tag	UNP P28288
A	19	ALA	-	expression tag	UNP P28288
A	20	PRO	-	expression tag	UNP P28288
A	21	GLY	-	expression tag	UNP P28288
A	22	VAL	-	expression tag	UNP P28288
A	23	VAL	-	expression tag	UNP P28288
A	24	GLY	-	expression tag	UNP P28288
A	25	MET	-	expression tag	UNP P28288
A	26	LEU	-	expression tag	UNP P28288
A	27	ALA	-	expression tag	UNP P28288
A	28	VAL	-	expression tag	UNP P28288
A	29	PHE	-	expression tag	UNP P28288
A	30	ALA	-	expression tag	UNP P28288
A	31	LEU	-	expression tag	UNP P28288
A	32	ILE	-	expression tag	UNP P28288
A	33	LYS	-	expression tag	UNP P28288
A	34	LEU	-	expression tag	UNP P28288
A	35	TYR	-	expression tag	UNP P28288
A	36	LYS	-	expression tag	UNP P28288
A	37	GLN	-	expression tag	UNP P28288
A	38	ASP	-	expression tag	UNP P28288
A	39	ILE	-	expression tag	UNP P28288
A	40	ARG	-	expression tag	UNP P28288
A	41	GLY	-	expression tag	UNP P28288
A	42	THR	-	expression tag	UNP P28288
A	43	LYS	-	expression tag	UNP P28288

Continued on next page...

Continued from previous page...

Chain	Residue	Modelled	Actual	Comment	Reference
A	44	HIS	-	expression tag	UNP P28288
A	45	LEU	-	expression tag	UNP P28288
A	46	VAL	-	expression tag	UNP P28288
A	47	ALA	-	expression tag	UNP P28288
A	48	LYS	-	expression tag	UNP P28288
A	49	THR	-	expression tag	UNP P28288

- Molecule 2 is phytanoyl-CoA (CCD ID: A1L1A) (formula: $C_{41}H_{74}N_7O_{17}P_3S$).

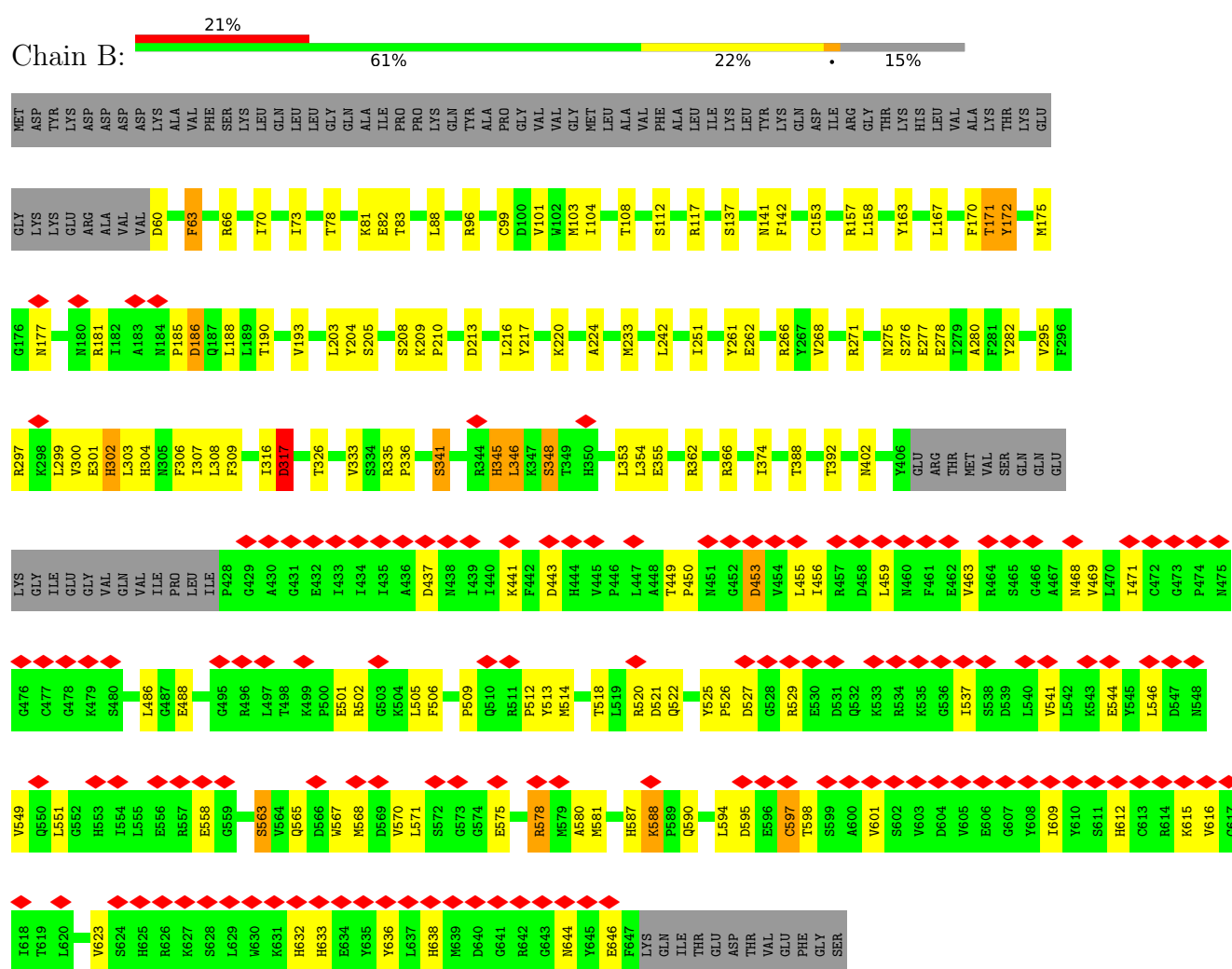


Mol	Chain	Residues	Atoms						AltConf
2	B	1	Total	C	N	O	P	S	0
			69	41	7	17	3	1	
2	A	1	Total	C	N	O	P	S	0
			69	41	7	17	3	1	

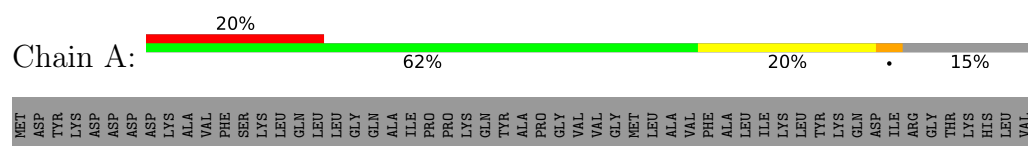
3 Residue-property plots

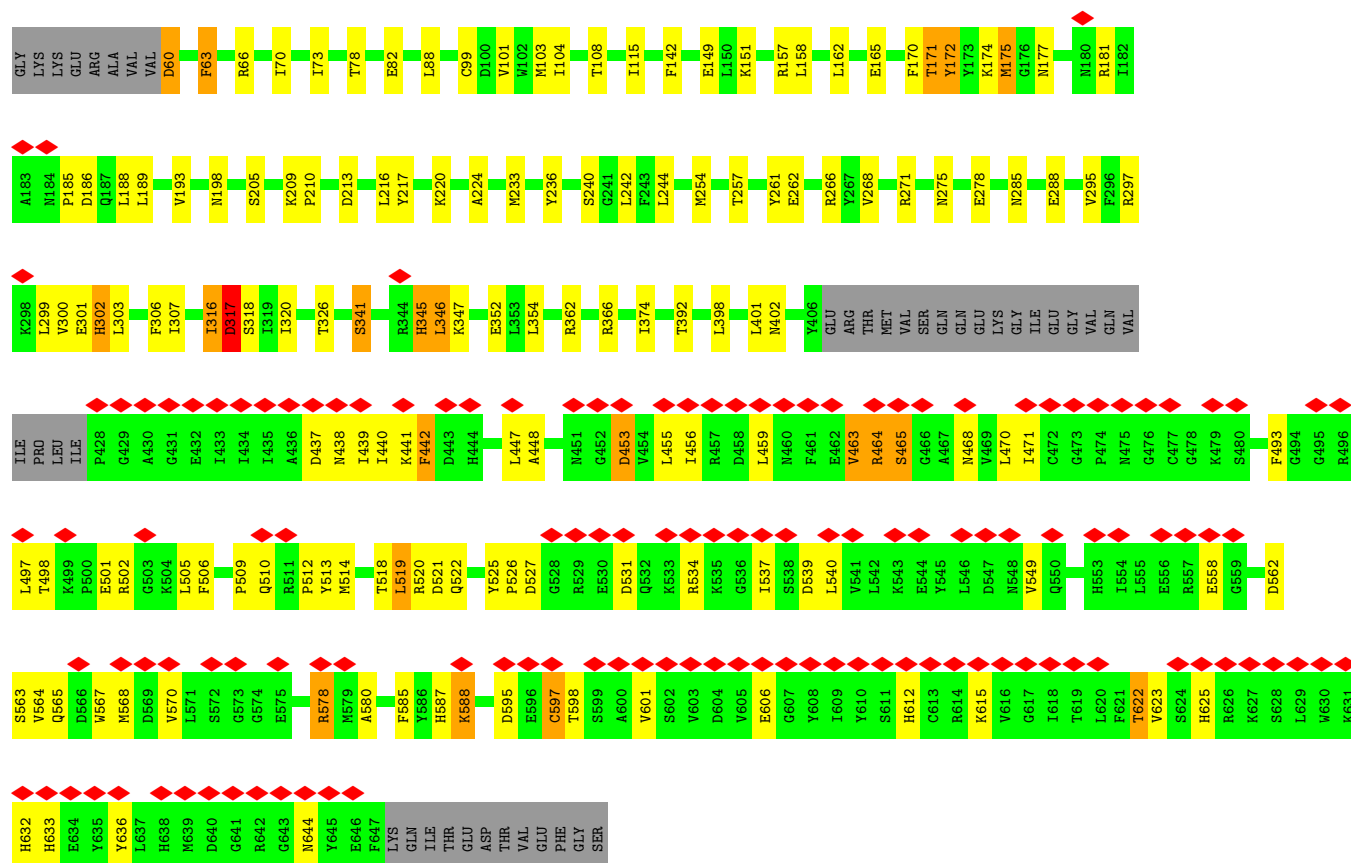
These plots are drawn for all protein, RNA, DNA and oligosaccharide chains in the entry. The first graphic for a chain summarises the proportions of the various outlier classes displayed in the second graphic. The second graphic shows the sequence view annotated by issues in geometry and atom inclusion in map density. Residues are color-coded according to the number of geometric quality criteria for which they contain at least one outlier: green = 0, yellow = 1, orange = 2 and red = 3 or more. A red diamond above a residue indicates a poor fit to the EM map for this residue (all-atom inclusion < 40%). Stretches of 2 or more consecutive residues without any outlier are shown as a green connector. Residues present in the sample, but not in the model, are shown in grey.

- Molecule 1: ATP-binding cassette sub-family D member 3



- Molecule 1: ATP-binding cassette sub-family D member 3





4 Experimental information

Property	Value	Source
EM reconstruction method	SINGLE PARTICLE	Depositor
Imposed symmetry	POINT, C2	Depositor
Number of particles used	96695	Depositor
Resolution determination method	FSC 0.143 CUT-OFF	Depositor
CTF correction method	PHASE FLIPPING AND AMPLITUDE CORRECTION	Depositor
Microscope	FEI TITAN KRIOS	Depositor
Voltage (kV)	300	Depositor
Electron dose ($e^-/\text{\AA}^2$)	54	Depositor
Minimum defocus (nm)	1500	Depositor
Maximum defocus (nm)	2000	Depositor
Magnification	Not provided	
Image detector	GATAN K3 (6k x 4k)	Depositor
Maximum map value	2.539	Depositor
Minimum map value	-1.564	Depositor
Average map value	-0.000	Depositor
Map value standard deviation	0.053	Depositor
Recommended contour level	0.371	Depositor
Map size (Å)	273.92, 273.92, 273.92	wwPDB
Map dimensions	256, 256, 256	wwPDB
Map angles (°)	90.0, 90.0, 90.0	wwPDB
Pixel spacing (Å)	1.07, 1.07, 1.07	Depositor

5 Model quality [i](#)

5.1 Standard geometry [i](#)

Bond lengths and bond angles in the following residue types are not validated in this section: A1L1A

The Z score for a bond length (or angle) is the number of standard deviations the observed value is removed from the expected value. A bond length (or angle) with $|Z| > 5$ is considered an outlier worth inspection. RMSZ is the root-mean-square of all Z scores of the bond lengths (or angles).

Mol	Chain	Bond lengths		Bond angles	
		RMSZ	$\# Z > 5$	RMSZ	$\# Z > 5$
1	A	0.29	0/4704	0.53	2/6344 (0.0%)
1	B	0.28	0/4704	0.52	1/6344 (0.0%)
All	All	0.28	0/9408	0.52	3/12688 (0.0%)

There are no bond length outliers.

All (3) bond angle outliers are listed below:

Mol	Chain	Res	Type	Atoms	Z	Observed(°)	Ideal(°)
1	B	317	ASP	CB-CG-OD1	5.30	123.07	118.30
1	A	171	THR	CB-CA-C	5.23	125.72	111.60
1	A	317	ASP	CB-CG-OD1	5.18	122.96	118.30

There are no chirality outliers.

There are no planarity outliers.

5.2 Too-close contacts [i](#)

In the following table, the Non-H and H(model) columns list the number of non-hydrogen atoms and hydrogen atoms in the chain respectively. The H(added) column lists the number of hydrogen atoms added and optimized by MolProbity. The Clashes column lists the number of clashes within the asymmetric unit, whereas Symm-Clashes lists symmetry-related clashes.

Mol	Chain	Non-H	H(model)	H(added)	Clashes	Symm-Clashes
1	A	4603	0	4675	96	0
1	B	4603	0	4675	99	0
2	A	69	0	0	9	0
2	B	69	0	0	11	0
All	All	9344	0	9350	191	0

The all-atom clashscore is defined as the number of clashes found per 1000 atoms (including hydrogen atoms). The all-atom clashscore for this structure is 10.

All (191) close contacts within the same asymmetric unit are listed below, sorted by their clash magnitude.

Atom-1	Atom-2	Interatomic distance (Å)	Clash overlap (Å)
1:A:115:ILE:HD11	1:A:354:LEU:HD11	1.53	0.88
1:B:326:THR:HG22	2:B:701:A1L1A:O7A	1.74	0.88
2:A:701:A1L1A:O9A	2:A:701:A1L1A:O2B	2.04	0.76
1:B:453:ASP:OD1	1:B:453:ASP:N	2.20	0.74
1:B:514:MET:O	1:A:271:ARG:NH2	2.21	0.73
1:B:271:ARG:NH2	1:A:514:MET:O	2.21	0.72
1:B:326:THR:CG2	2:B:701:A1L1A:O7A	2.37	0.72
1:A:453:ASP:OD1	1:A:453:ASP:N	2.22	0.71
1:B:261:TYR:HB3	1:B:300:VAL:HB	1.74	0.68
1:B:278:GLU:HG2	1:A:509:PRO:HG3	1.76	0.67
1:B:595:ASP:HA	1:B:623:VAL:HB	1.77	0.67
1:A:82:GLU:OE1	1:A:157:ARG:NH1	2.28	0.66
1:B:82:GLU:OE1	1:B:157:ARG:NH1	2.29	0.66
1:A:170:PHE:HE2	1:A:502:ARG:HH11	1.44	0.65
1:B:66:ARG:HG2	1:B:392:THR:HG21	1.79	0.65
1:B:297:ARG:NH1	1:B:301:GLU:OE1	2.31	0.64
1:A:439:ILE:HG22	1:A:464:ARG:HH12	1.63	0.64
1:A:595:ASP:HA	1:A:623:VAL:HB	1.79	0.64
1:A:563:SER:OG	1:A:565:GLN:OE1	2.16	0.63
1:A:549:VAL:HG22	1:A:578:ARG:HG3	1.80	0.63
1:B:104:ILE:HD11	1:B:366:ARG:HD2	1.81	0.62
1:A:104:ILE:HD11	1:A:366:ARG:HD2	1.81	0.62
1:B:597:CYS:SG	1:B:598:THR:N	2.73	0.61
1:A:174:LYS:HB3	1:A:401:LEU:HD22	1.81	0.61
1:A:108:THR:HG22	1:A:362:ARG:HH21	1.66	0.61
1:A:520:ARG:NH2	1:A:562:ASP:OD1	2.33	0.61
1:A:456:ILE:HG21	1:A:459:LEU:HG	1.83	0.61
1:A:158:LEU:HD23	1:A:193:VAL:HG13	1.82	0.60
1:B:108:THR:HG22	1:B:362:ARG:HH21	1.67	0.60
1:B:171:THR:HG21	1:B:402:ASN:OD1	2.00	0.60
1:A:346:LEU:H	1:A:346:LEU:HD22	1.66	0.60
1:B:170:PHE:CZ	1:B:502:ARG:HD3	2.37	0.60
1:B:158:LEU:HD23	1:B:193:VAL:HG13	1.83	0.60
1:A:242:LEU:HD21	2:A:701:A1L1A:O21	2.02	0.60
1:B:346:LEU:HD22	1:B:346:LEU:H	1.67	0.60
1:B:326:THR:HA	2:B:701:A1L1A:C2B	2.32	0.59
1:A:597:CYS:SG	1:A:598:THR:N	2.75	0.59

Continued on next page...

Continued from previous page...

Atom-1	Atom-2	Interatomic distance (Å)	Clash overlap (Å)
1:B:170:PHE:HE2	1:B:502:ARG:HH11	1.50	0.58
1:B:175:MET:SD	1:B:185:PRO:HB3	2.43	0.58
1:B:300:VAL:HG22	1:B:303:LEU:HD11	1.84	0.58
2:B:701:A1L1A:CCP	2:B:701:A1L1A:P1A	2.92	0.58
1:A:558:GLU:OE1	1:A:565:GLN:NE2	2.37	0.57
1:B:521:ASP:O	1:B:522:GLN:NE2	2.37	0.57
1:B:571:LEU:HD22	1:B:575:GLU:HG3	1.86	0.57
1:A:521:ASP:OD1	1:A:522:GLN:NE2	2.33	0.57
1:A:66:ARG:HG2	1:A:392:THR:HG21	1.87	0.57
1:B:302:HIS:O	1:B:306:PHE:N	2.35	0.57
1:B:341:SER:O	1:B:341:SER:OG	2.23	0.57
1:A:101:VAL:HG21	1:A:216:LEU:HD21	1.86	0.56
1:A:88:LEU:HD11	1:A:142:PHE:HE2	1.70	0.56
1:B:88:LEU:HD11	1:B:142:PHE:HE2	1.71	0.56
1:B:81:LYS:NZ	1:B:153:CYS:SG	2.79	0.56
1:B:612:HIS:HA	1:B:615:LYS:HE3	1.88	0.56
1:B:101:VAL:HG21	1:B:216:LEU:HD21	1.87	0.55
1:A:471:ILE:HB	1:A:623:VAL:HG22	1.87	0.55
1:A:244:LEU:HG	1:A:320:ILE:HD11	1.87	0.55
1:B:437:ASP:OD1	1:B:590:GLN:NE2	2.38	0.55
1:B:326:THR:HG22	2:B:701:A1L1A:P3B	2.47	0.55
1:A:170:PHE:CZ	1:A:502:ARG:HD3	2.41	0.55
1:B:509:PRO:HG3	1:A:278:GLU:HG2	1.88	0.55
1:B:549:VAL:HG22	1:B:578:ARG:HG3	1.87	0.55
1:B:521:ASP:OD1	1:B:521:ASP:N	2.34	0.54
1:B:262:GLU:OE1	1:B:300:VAL:HG21	2.08	0.54
1:A:172:TYR:CD1	1:A:172:TYR:N	2.76	0.54
1:B:541:VAL:HA	1:B:544:GLU:HG2	1.90	0.53
1:A:518:THR:N	1:A:521:ASP:OD2	2.41	0.53
1:B:468:ASN:HB2	1:B:633:HIS:HA	1.90	0.53
1:A:585:PHE:O	1:A:588:LYS:NZ	2.32	0.53
1:B:563:SER:OG	1:B:565:GLN:OE1	2.26	0.53
1:A:438:ASN:HB3	1:A:465:SER:HB2	1.92	0.52
1:A:165:GLU:HB2	1:A:398:LEU:HD23	1.91	0.52
1:A:567:TRP:HA	1:A:570:VAL:HG12	1.91	0.52
1:B:588:LYS:HD2	1:B:616:VAL:HG11	1.91	0.51
1:B:280:ALA:O	1:A:170:PHE:HE1	1.94	0.51
1:A:60:ASP:HB2	1:A:63:PHE:HB3	1.93	0.50
1:B:513:TYR:HE2	1:B:525:TYR:CZ	2.30	0.50
1:A:520:ARG:NH1	1:A:539:ASP:OD2	2.45	0.50
1:B:501:GLU:OE2	1:B:501:GLU:N	2.27	0.50

Continued on next page...

Continued from previous page...

Atom-1	Atom-2	Interatomic distance (Å)	Clash overlap (Å)
1:B:88:LEU:HD11	1:B:142:PHE:CE2	2.47	0.50
1:A:341:SER:O	1:A:341:SER:OG	2.21	0.50
1:A:447:LEU:HD13	1:A:459:LEU:HD12	1.93	0.50
1:A:598:THR:HG23	1:A:601:VAL:HB	1.94	0.49
1:B:60:ASP:HB2	1:B:63:PHE:HB3	1.93	0.49
1:B:638:HIS:HB3	1:B:646:GLU:HG2	1.95	0.49
1:B:513:TYR:OH	1:A:288:GLU:OE2	2.30	0.49
1:A:301:GLU:HA	1:A:301:GLU:OE2	2.13	0.49
1:B:326:THR:HA	2:B:701:A1L1A:C3B	2.42	0.49
1:B:549:VAL:HG23	1:B:609:ILE:HD11	1.95	0.48
1:B:512:PRO:HB3	1:B:580:ALA:HB2	1.96	0.48
1:A:99:CYS:O	1:A:103:MET:HG3	2.14	0.48
1:A:254:MET:HB2	1:A:302:HIS:NE2	2.29	0.48
1:B:326:THR:HG22	2:B:701:A1L1A:C3B	2.44	0.48
1:B:224:ALA:HA	1:B:345:HIS:NE2	2.29	0.47
1:B:348:SER:O	1:B:348:SER:OG	2.30	0.47
1:A:519:LEU:HB2	1:A:567:TRP:CZ2	2.48	0.47
1:B:117:ARG:NH1	1:A:346:LEU:O	2.47	0.47
1:B:186:ASP:O	1:B:190:THR:HG22	2.14	0.47
1:B:581:MET:HG3	1:B:609:ILE:HD13	1.97	0.47
1:A:326:THR:HA	2:A:701:A1L1A:C2B	2.45	0.47
1:B:463:VAL:HG11	1:B:469:VAL:HG21	1.97	0.47
1:A:165:GLU:OE1	1:A:402:ASN:ND2	2.47	0.47
1:A:468:ASN:HB2	1:A:633:HIS:HA	1.97	0.47
1:A:512:PRO:HB3	1:A:580:ALA:HB2	1.96	0.47
1:A:622:THR:HG21	1:A:633:HIS:NE2	2.30	0.47
1:A:151:LYS:HG2	1:A:198:ASN:HA	1.97	0.47
1:A:177:ASN:OD1	1:A:177:ASN:N	2.43	0.47
1:B:471:ILE:HB	1:B:623:VAL:HG22	1.96	0.46
1:B:275:ASN:ND2	1:A:513:TYR:CE1	2.83	0.46
1:B:303:LEU:O	1:B:307:ILE:N	2.38	0.46
1:B:172:TYR:CD1	1:B:172:TYR:N	2.76	0.46
1:B:204:TYR:O	1:B:208:SER:OG	2.30	0.46
1:B:346:LEU:HG	1:B:353:LEU:HD23	1.97	0.46
1:A:518:THR:HB	1:A:562:ASP:HA	1.98	0.46
1:A:598:THR:HG21	1:A:606:GLU:HG2	1.96	0.46
1:A:88:LEU:HD11	1:A:142:PHE:CE2	2.50	0.46
1:B:170:PHE:CE2	1:B:502:ARG:HD3	2.52	0.45
1:B:443:ASP:OD1	1:B:443:ASP:N	2.47	0.45
1:B:513:TYR:CE1	1:A:275:ASN:ND2	2.81	0.45
1:A:501:GLU:OE2	1:A:501:GLU:N	2.27	0.45

Continued on next page...

Continued from previous page...

Atom-1	Atom-2	Interatomic distance (Å)	Clash overlap (Å)
1:A:261:TYR:HB3	1:A:300:VAL:HB	1.98	0.45
1:A:644:ASN:OD1	1:A:644:ASN:N	2.49	0.45
1:B:598:THR:HG23	1:B:601:VAL:HB	1.99	0.45
1:A:213:ASP:HB2	1:A:217:TYR:CE2	2.52	0.45
1:A:316:ILE:HD13	1:A:316:ILE:HA	1.84	0.44
1:A:236:TYR:OH	1:A:320:ILE:O	2.28	0.44
1:B:213:ASP:HB2	1:B:217:TYR:CE2	2.53	0.44
1:B:209:LYS:HB3	1:B:210:PRO:HD3	2.00	0.44
1:A:162:LEU:HB3	1:A:189:LEU:HD23	1.99	0.44
1:A:297:ARG:NH1	1:A:301:GLU:OE1	2.51	0.44
1:B:99:CYS:O	1:B:103:MET:HG3	2.18	0.44
1:B:486:LEU:HD23	1:B:486:LEU:HA	1.85	0.44
1:B:242:LEU:HD21	2:B:701:A1L1A:O21	2.17	0.43
1:B:567:TRP:HA	1:B:570:VAL:HG12	2.00	0.43
1:A:326:THR:HB	2:A:701:A1L1A:O2B	2.18	0.43
1:A:442:PHE:CE1	1:A:497:LEU:HD13	2.54	0.43
1:B:301:GLU:HA	1:B:303:LEU:HD12	1.99	0.43
1:B:304:HIS:ND1	1:A:149:GLU:OE2	2.48	0.43
1:B:333:VAL:O	1:B:336:PRO:HD2	2.18	0.43
2:B:701:A1L1A:O3B	2:B:701:A1L1A:C8A	2.66	0.43
1:A:175:MET:HE1	1:A:398:LEU:HD12	2.00	0.43
1:A:448:ALA:HB3	1:A:493:PHE:CG	2.54	0.43
1:A:224:ALA:HA	1:A:345:HIS:HE2	1.83	0.43
1:A:497:LEU:HD12	1:A:498:THR:N	2.34	0.43
1:B:488:GLU:OE1	1:B:502:ARG:NH1	2.51	0.43
1:B:60:ASP:N	1:B:60:ASP:OD1	2.52	0.43
1:B:70:ILE:HA	1:B:73:ILE:HD12	2.01	0.43
1:B:163:TYR:HD1	1:B:167:LEU:HD12	1.83	0.43
1:B:558:GLU:OE1	1:B:558:GLU:HA	2.19	0.43
1:A:175:MET:SD	1:A:185:PRO:HB3	2.58	0.42
1:B:354:LEU:HA	1:A:115:ILE:HD12	2.02	0.42
1:A:303:LEU:O	1:A:307:ILE:N	2.44	0.42
1:A:209:LYS:HB3	1:A:210:PRO:HD3	2.00	0.42
1:A:244:LEU:HD13	1:A:317:ASP:HB2	2.01	0.42
1:A:526:PRO:HG2	1:A:587:HIS:NE2	2.35	0.42
1:B:268:VAL:HG11	1:B:295:VAL:HG21	2.02	0.42
1:A:612:HIS:HA	1:A:615:LYS:HE2	2.01	0.42
1:B:137:SER:O	1:B:141:ASN:HB2	2.19	0.42
1:B:308:LEU:HD12	1:B:308:LEU:HA	1.90	0.42
2:B:701:A1L1A:P1A	2:B:701:A1L1A:O8A	2.78	0.42
1:A:470:LEU:HD12	1:A:633:HIS:ND1	2.34	0.42

Continued on next page...

Continued from previous page...

Atom-1	Atom-2	Interatomic distance (Å)	Clash overlap (Å)
1:A:537:ILE:HD12	1:A:537:ILE:HA	1.96	0.42
1:B:251:ILE:HG12	1:B:309:PHE:HE2	1.85	0.41
1:A:345:HIS:O	1:A:347:LYS:N	2.53	0.41
1:B:388:THR:O	1:B:392:THR:OG1	2.25	0.41
1:B:526:PRO:HG2	1:B:587:HIS:NE2	2.35	0.41
1:A:326:THR:HG22	2:A:701:A1L1A:O2A	2.20	0.41
1:A:531:ASP:O	1:A:534:ARG:HG2	2.20	0.41
2:A:701:A1L1A:C3B	2:A:701:A1L1A:C8A	2.94	0.41
2:A:701:A1L1A:C8A	2:A:701:A1L1A:O3B	2.68	0.41
1:A:262:GLU:OE2	1:A:300:VAL:HG21	2.19	0.41
1:B:271:ARG:O	1:B:275:ASN:HB3	2.21	0.41
1:B:449:THR:HB	1:B:450:PRO:HD2	2.00	0.41
1:B:546:LEU:HG	1:B:551:LEU:O	2.20	0.41
1:B:295:VAL:O	1:B:300:VAL:HG12	2.20	0.41
1:A:268:VAL:HG11	1:A:295:VAL:HG21	2.02	0.41
1:A:326:THR:HG22	2:A:701:A1L1A:O7A	2.20	0.41
1:B:276:SER:OG	1:A:172:TYR:HD2	2.04	0.41
1:B:456:ILE:HG21	1:B:459:LEU:HG	2.02	0.41
1:A:70:ILE:HA	1:A:73:ILE:HD12	2.02	0.41
1:B:112:SER:OG	1:B:355:GLU:HG2	2.20	0.41
1:B:317:ASP:OD1	1:B:317:ASP:C	2.59	0.41
1:B:520:ARG:HE	1:B:529:ARG:NH1	2.18	0.41
1:B:537:ILE:HA	1:B:537:ILE:HD12	1.80	0.41
1:B:594:LEU:HD12	1:B:597:CYS:SG	2.61	0.41
1:A:317:ASP:OD1	1:A:317:ASP:C	2.59	0.41
2:B:701:A1L1A:CCP	2:B:701:A1L1A:O1A	2.69	0.41
1:A:510:GLN:HA	1:A:597:CYS:HA	2.03	0.40
2:A:701:A1L1A:O2A	2:A:701:A1L1A:C3B	2.69	0.40
1:A:440:ILE:HG22	1:A:463:VAL:HG22	2.03	0.40
1:A:302:HIS:O	1:A:306:PHE:N	2.48	0.40
1:A:513:TYR:HE2	1:A:525:TYR:CZ	2.40	0.40

There are no symmetry-related clashes.

5.3 Torsion angles

5.3.1 Protein backbone

In the following table, the Percentiles column shows the percent Ramachandran outliers of the chain as a percentile score with respect to all PDB entries followed by that with respect to all EM entries.

The Analysed column shows the number of residues for which the backbone conformation was analysed, and the total number of residues.

Mol	Chain	Analysed	Favoured	Allowed	Outliers	Percentiles	
1	A	563/668 (84%)	521 (92%)	42 (8%)	0	100	100
1	B	563/668 (84%)	520 (92%)	43 (8%)	0	100	100
All	All	1126/1336 (84%)	1041 (92%)	85 (8%)	0	100	100

There are no Ramachandran outliers to report.

5.3.2 Protein sidechains ⓘ

In the following table, the Percentiles column shows the percent sidechain outliers of the chain as a percentile score with respect to all PDB entries followed by that with respect to all EM entries.

The Analysed column shows the number of residues for which the sidechain conformation was analysed, and the total number of residues.

Mol	Chain	Analysed	Rotameric	Outliers	Percentiles	
1	A	501/587 (85%)	453 (90%)	48 (10%)	7	19
1	B	501/587 (85%)	459 (92%)	42 (8%)	9	24
All	All	1002/1174 (85%)	912 (91%)	90 (9%)	10	21

All (90) residues with a non-rotameric sidechain are listed below:

Mol	Chain	Res	Type
1	B	63	PHE
1	B	78	THR
1	B	83	THR
1	B	96	ARG
1	B	171	THR
1	B	172	TYR
1	B	177	ASN
1	B	181	ARG
1	B	186	ASP
1	B	188	LEU
1	B	203	LEU
1	B	205	SER
1	B	220	LYS
1	B	233	MET
1	B	266	ARG

Continued on next page...

Continued from previous page...

Mol	Chain	Res	Type
1	B	277	GLU
1	B	282	TYR
1	B	299	LEU
1	B	302	HIS
1	B	316	ILE
1	B	317	ASP
1	B	335	ARG
1	B	341	SER
1	B	345	HIS
1	B	346	LEU
1	B	348	SER
1	B	374	ILE
1	B	441	LYS
1	B	453	ASP
1	B	455	LEU
1	B	505	LEU
1	B	506	PHE
1	B	518	THR
1	B	527	ASP
1	B	563	SER
1	B	568	MET
1	B	578	ARG
1	B	588	LYS
1	B	597	CYS
1	B	632	HIS
1	B	636	TYR
1	B	644	ASN
1	A	60	ASP
1	A	63	PHE
1	A	78	THR
1	A	171	THR
1	A	172	TYR
1	A	175	MET
1	A	181	ARG
1	A	186	ASP
1	A	188	LEU
1	A	205	SER
1	A	220	LYS
1	A	233	MET
1	A	240	SER
1	A	257	THR
1	A	266	ARG

Continued on next page...

Continued from previous page...

Mol	Chain	Res	Type
1	A	285	ASN
1	A	299	LEU
1	A	302	HIS
1	A	316	ILE
1	A	317	ASP
1	A	318	SER
1	A	341	SER
1	A	345	HIS
1	A	346	LEU
1	A	352	GLU
1	A	374	ILE
1	A	437	ASP
1	A	441	LYS
1	A	442	PHE
1	A	453	ASP
1	A	455	LEU
1	A	463	VAL
1	A	464	ARG
1	A	465	SER
1	A	505	LEU
1	A	506	PHE
1	A	519	LEU
1	A	527	ASP
1	A	540	LEU
1	A	564	VAL
1	A	568	MET
1	A	578	ARG
1	A	588	LYS
1	A	597	CYS
1	A	622	THR
1	A	625	HIS
1	A	632	HIS
1	A	636	TYR

Sometimes sidechains can be flipped to improve hydrogen bonding and reduce clashes. There are no such sidechains identified.

5.3.3 RNA ⓘ

There are no RNA molecules in this entry.

5.4 Non-standard residues in protein, DNA, RNA chains [i](#)

There are no non-standard protein/DNA/RNA residues in this entry.

5.5 Carbohydrates [i](#)

There are no oligosaccharides in this entry.

5.6 Ligand geometry [i](#)

2 ligands are modelled in this entry.

In the following table, the Counts columns list the number of bonds (or angles) for which Mogul statistics could be retrieved, the number of bonds (or angles) that are observed in the model and the number of bonds (or angles) that are defined in the Chemical Component Dictionary. The Link column lists molecule types, if any, to which the group is linked. The Z score for a bond length (or angle) is the number of standard deviations the observed value is removed from the expected value. A bond length (or angle) with $|Z| > 2$ is considered an outlier worth inspection. RMSZ is the root-mean-square of all Z scores of the bond lengths (or angles).

Mol	Type	Chain	Res	Link	Bond lengths			Bond angles		
					Counts	RMSZ	# Z > 2	Counts	RMSZ	# Z > 2
2	A1L1A	A	701	-	62,71,71	2.51	12 (19%)	76,101,101	2.71	29 (38%)
2	A1L1A	B	701	-	62,71,71	2.53	15 (24%)	76,101,101	2.67	24 (31%)

In the following table, the Chirals column lists the number of chiral outliers, the number of chiral centers analysed, the number of these observed in the model and the number defined in the Chemical Component Dictionary. Similar counts are reported in the Torsion and Rings columns. '-' means no outliers of that kind were identified.

Mol	Type	Chain	Res	Link	Chirals	Torsions	Rings
2	A1L1A	A	701	-	-	33/69/89/89	0/3/3/3
2	A1L1A	B	701	-	-	35/69/89/89	0/3/3/3

All (27) bond length outliers are listed below:

Mol	Chain	Res	Type	Atoms	Z	Observed(Å)	Ideal(Å)
2	A	701	A1L1A	O4B-C1B	-10.11	1.27	1.41
2	B	701	A1L1A	O4B-C1B	-10.06	1.27	1.41
2	B	701	A1L1A	C2B-C3B	-10.05	1.30	1.52
2	A	701	A1L1A	C2B-C3B	-9.80	1.31	1.52
2	A	701	A1L1A	O9P-C9P	-5.52	1.12	1.23
2	B	701	A1L1A	C2B-C1B	5.25	1.61	1.53

Continued on next page...

Continued from previous page...

Mol	Chain	Res	Type	Atoms	Z	Observed(Å)	Ideal(Å)
2	B	701	A1L1A	C9P-N8P	4.83	1.44	1.33
2	B	701	A1L1A	O9P-C9P	-4.67	1.14	1.23
2	B	701	A1L1A	C5P-N4P	4.65	1.44	1.33
2	A	701	A1L1A	C5P-N4P	4.57	1.43	1.33
2	A	701	A1L1A	C9P-N8P	4.52	1.43	1.33
2	A	701	A1L1A	C2B-C1B	4.28	1.60	1.53
2	A	701	A1L1A	O5P-C5P	-3.86	1.15	1.23
2	B	701	A1L1A	O5P-C5P	-3.83	1.15	1.23
2	A	701	A1L1A	C8A-N7A	-3.23	1.28	1.34
2	B	701	A1L1A	C8A-N7A	-3.11	1.29	1.34
2	A	701	A1L1A	C4A-N3A	-2.88	1.31	1.35
2	B	701	A1L1A	O5B-C5B	-2.82	1.33	1.44
2	B	701	A1L1A	C4A-N3A	-2.61	1.32	1.35
2	B	701	A1L1A	C6A-N6A	2.59	1.43	1.34
2	A	701	A1L1A	C6A-N6A	2.55	1.43	1.34
2	A	701	A1L1A	O5B-C5B	-2.39	1.35	1.44
2	A	701	A1L1A	O21-C20	-2.14	1.17	1.21
2	B	701	A1L1A	C5A-N7A	-2.07	1.32	1.39
2	B	701	A1L1A	O3B-C3B	-2.06	1.36	1.44
2	B	701	A1L1A	P3B-O7A	-2.04	1.47	1.54
2	B	701	A1L1A	O21-C20	-2.00	1.17	1.21

All (53) bond angle outliers are listed below:

Mol	Chain	Res	Type	Atoms	Z	Observed(°)	Ideal(°)
2	B	701	A1L1A	C19-C20-S1P	10.49	126.61	113.63
2	A	701	A1L1A	C19-C20-S1P	8.83	124.56	113.63
2	B	701	A1L1A	O21-C20-S1P	-7.92	112.32	122.61
2	A	701	A1L1A	CAP-C9P-N8P	7.73	131.98	116.58
2	A	701	A1L1A	O21-C20-S1P	-7.73	112.57	122.61
2	B	701	A1L1A	CAP-C9P-N8P	6.80	130.12	116.58
2	A	701	A1L1A	P1A-O3A-P2A	-6.18	111.61	132.83
2	B	701	A1L1A	O9P-C9P-N8P	-5.71	110.74	122.99
2	A	701	A1L1A	CDP-CBP-CAP	5.43	118.24	108.82
2	B	701	A1L1A	C2P-S1P-C20	5.38	118.63	101.87
2	B	701	A1L1A	N3A-C2A-N1A	-5.33	120.35	128.68
2	A	701	A1L1A	N3A-C2A-N1A	-5.32	120.37	128.68
2	A	701	A1L1A	O2B-C2B-C3B	5.12	125.71	111.17
2	B	701	A1L1A	P1A-O3A-P2A	-5.05	115.50	132.83
2	B	701	A1L1A	C6P-C5P-N4P	4.76	124.44	116.42
2	A	701	A1L1A	C2P-S1P-C20	4.76	116.69	101.87
2	A	701	A1L1A	C1B-N9A-C4A	-4.71	118.36	126.64

Continued on next page...

Continued from previous page...

Mol	Chain	Res	Type	Atoms	Z	Observed(°)	Ideal(°)
2	B	701	A1L1A	O6A-CCP-CBP	4.47	117.73	110.55
2	A	701	A1L1A	O9P-C9P-N8P	-4.34	113.68	122.99
2	A	701	A1L1A	C6P-C5P-N4P	4.23	123.55	116.42
2	A	701	A1L1A	CEP-CBP-CCP	3.84	114.49	108.23
2	B	701	A1L1A	CDP-CBP-CEP	3.36	116.02	109.17
2	A	701	A1L1A	C6P-C7P-N8P	-3.33	105.18	111.90
2	B	701	A1L1A	O2B-C2B-C3B	3.24	120.37	111.17
2	B	701	A1L1A	O4B-C4B-C3B	-3.20	98.01	104.87
2	B	701	A1L1A	C3P-N4P-C5P	3.10	128.59	122.84
2	A	701	A1L1A	O4B-C4B-C3B	-3.05	98.33	104.87
2	B	701	A1L1A	O2B-C2B-C1B	3.00	121.94	110.85
2	B	701	A1L1A	C1B-N9A-C4A	-2.96	121.44	126.64
2	B	701	A1L1A	O5P-C5P-C6P	-2.91	116.70	122.02
2	B	701	A1L1A	OAP-CAP-C9P	2.75	122.65	109.42
2	B	701	A1L1A	O5A-P2A-O6A	-2.72	95.12	107.75
2	A	701	A1L1A	O3B-C3B-C4B	2.66	119.71	110.08
2	A	701	A1L1A	C2B-C3B-C4B	-2.66	98.51	103.22
2	A	701	A1L1A	C08-C07-C09	-2.63	101.76	111.29
2	A	701	A1L1A	O5P-C5P-C6P	-2.61	117.25	122.02
2	A	701	A1L1A	O2B-C2B-C1B	2.52	120.15	110.85
2	B	701	A1L1A	C08-C07-C09	-2.51	102.22	111.29
2	A	701	A1L1A	C3P-N4P-C5P	2.45	127.38	122.84
2	B	701	A1L1A	C7P-C6P-C5P	-2.45	108.28	112.36
2	B	701	A1L1A	O3B-P3B-O9A	-2.41	100.08	109.39
2	B	701	A1L1A	O7A-P3B-O3B	2.32	116.37	105.99
2	A	701	A1L1A	CDP-CBP-CEP	2.30	113.85	109.17
2	B	701	A1L1A	O5P-C5P-N4P	-2.21	118.84	123.01
2	A	701	A1L1A	O9P-C9P-CAP	-2.20	114.34	121.06
2	A	701	A1L1A	CDP-CBP-CCP	-2.20	104.64	108.23
2	B	701	A1L1A	CEP-CBP-CAP	-2.16	105.08	108.82
2	A	701	A1L1A	O8A-P3B-O3B	2.10	115.38	105.99
2	A	701	A1L1A	C3B-C2B-C1B	2.06	104.46	99.89
2	A	701	A1L1A	OAP-CAP-C9P	2.06	119.33	109.42
2	A	701	A1L1A	O3B-C3B-C2B	2.04	119.06	111.68
2	A	701	A1L1A	O5P-C5P-N4P	-2.03	119.18	123.01
2	A	701	A1L1A	C7P-C6P-C5P	-2.01	109.02	112.36

There are no chirality outliers.

All (68) torsion outliers are listed below:

Mol	Chain	Res	Type	Atoms
2	B	701	A1L1A	C19-C20-S1P-C2P

Continued on next page...

Continued from previous page...

Mol	Chain	Res	Type	Atoms
2	B	701	A1L1A	O21-C20-S1P-C2P
2	B	701	A1L1A	CAP-C9P-N8P-C7P
2	B	701	A1L1A	C9P-CAP-CBP-CEP
2	B	701	A1L1A	C9P-CAP-CBP-CCP
2	B	701	A1L1A	CBP-CCP-O6A-P2A
2	B	701	A1L1A	CCP-O6A-P2A-O5A
2	B	701	A1L1A	CCP-O6A-P2A-O3A
2	B	701	A1L1A	C5B-O5B-P1A-O3A
2	A	701	A1L1A	C19-C20-S1P-C2P
2	A	701	A1L1A	O21-C20-S1P-C2P
2	A	701	A1L1A	CAP-C9P-N8P-C7P
2	A	701	A1L1A	C9P-CAP-CBP-CEP
2	A	701	A1L1A	C9P-CAP-CBP-CDP
2	A	701	A1L1A	C9P-CAP-CBP-CCP
2	A	701	A1L1A	CAP-CBP-CCP-O6A
2	A	701	A1L1A	C5B-O5B-P1A-O2A
2	B	701	A1L1A	C6P-C5P-N4P-C3P
2	A	701	A1L1A	C6P-C5P-N4P-C3P
2	B	701	A1L1A	O9P-C9P-N8P-C7P
2	A	701	A1L1A	O9P-C9P-N8P-C7P
2	A	701	A1L1A	C2B-C3B-O3B-P3B
2	B	701	A1L1A	O5P-C5P-N4P-C3P
2	A	701	A1L1A	O5P-C5P-N4P-C3P
2	B	701	A1L1A	C10-C11-C12-C13
2	A	701	A1L1A	C10-C11-C12-C13
2	A	701	A1L1A	C4B-C3B-O3B-P3B
2	B	701	A1L1A	C17-C19-C20-O21
2	A	701	A1L1A	C17-C19-C20-O21
2	A	701	A1L1A	CEP-CBP-CCP-O6A
2	A	701	A1L1A	CDP-CBP-CCP-O6A
2	B	701	A1L1A	C15-C16-C17-C18
2	A	701	A1L1A	C15-C16-C17-C18
2	B	701	A1L1A	C3B-C4B-C5B-O5B
2	B	701	A1L1A	C04-C05-C06-C07
2	A	701	A1L1A	C04-C05-C06-C07
2	B	701	A1L1A	O4B-C4B-C5B-O5B
2	B	701	A1L1A	C18-C17-C19-C20
2	A	701	A1L1A	C10-C11-C12-C14
2	A	701	A1L1A	C3B-C4B-C5B-O5B
2	A	701	A1L1A	O4B-C4B-C5B-O5B
2	B	701	A1L1A	C16-C17-C19-C20
2	B	701	A1L1A	S1P-C2P-C3P-N4P

Continued on next page...

Continued from previous page...

Mol	Chain	Res	Type	Atoms
2	A	701	A1L1A	S1P-C2P-C3P-N4P
2	B	701	A1L1A	N8P-C9P-CAP-CBP
2	B	701	A1L1A	C3P-C2P-S1P-C20
2	B	701	A1L1A	C10-C11-C12-C14
2	A	701	A1L1A	C4B-C5B-O5B-P1A
2	B	701	A1L1A	C9P-CAP-CBP-CDP
2	A	701	A1L1A	C3B-O3B-P3B-O7A
2	B	701	A1L1A	P2A-O3A-P1A-O2A
2	B	701	A1L1A	CCP-O6A-P2A-O4A
2	B	701	A1L1A	C5B-O5B-P1A-O2A
2	A	701	A1L1A	C16-C17-C19-C20
2	B	701	A1L1A	C08-C07-C09-C10
2	A	701	A1L1A	C08-C07-C09-C10
2	B	701	A1L1A	C11-C12-C14-C15
2	A	701	A1L1A	C11-C12-C14-C15
2	A	701	A1L1A	C3P-C2P-S1P-C20
2	A	701	A1L1A	C01-C02-C04-C05
2	A	701	A1L1A	C18-C17-C19-C20
2	B	701	A1L1A	C01-C02-C04-C05
2	B	701	A1L1A	C3B-O3B-P3B-O7A
2	A	701	A1L1A	C5B-O5B-P1A-O3A
2	B	701	A1L1A	C13-C12-C14-C15
2	A	701	A1L1A	C13-C12-C14-C15
2	B	701	A1L1A	P2A-O3A-P1A-O1A
2	B	701	A1L1A	O9P-C9P-CAP-CBP

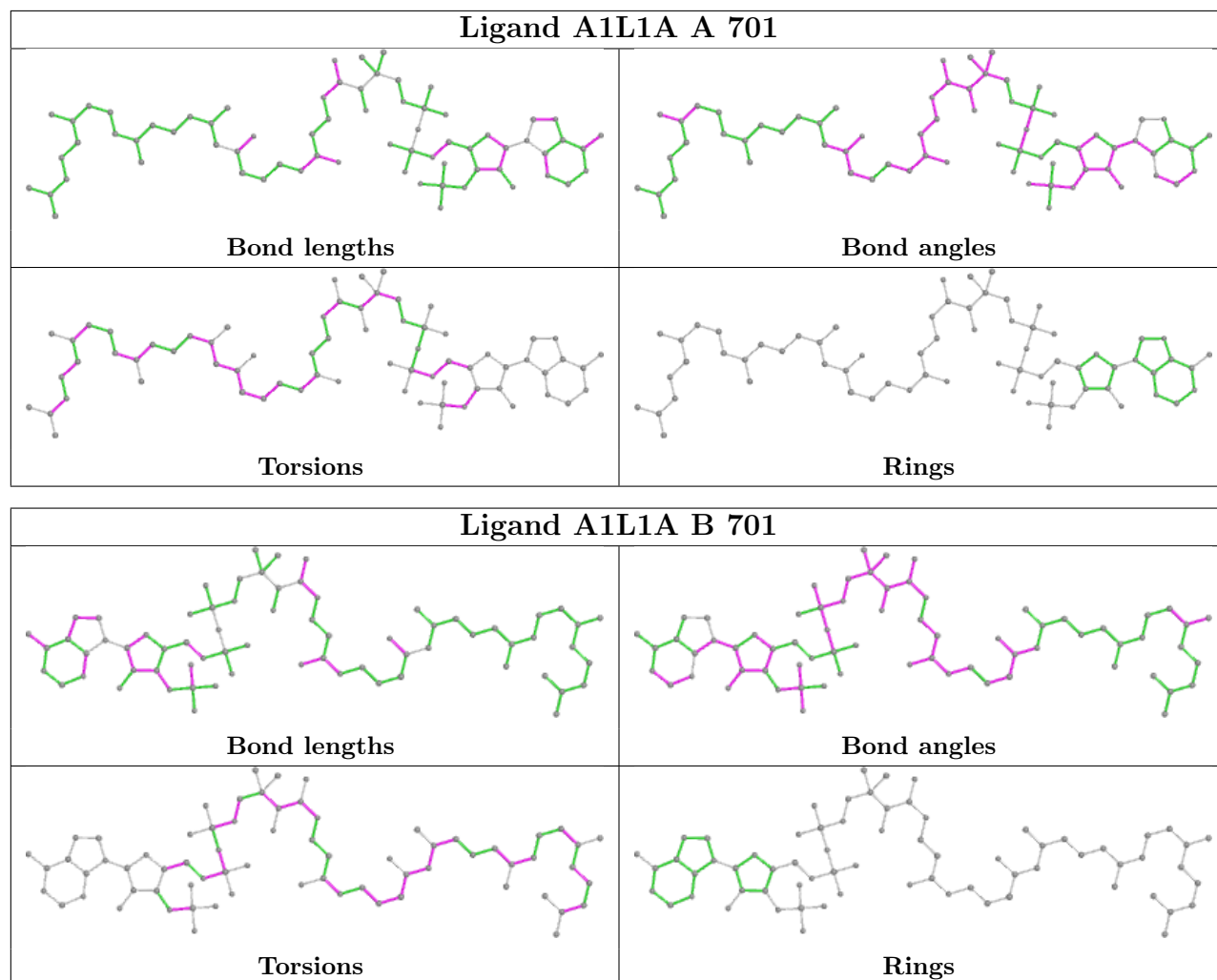
There are no ring outliers.

2 monomers are involved in 20 short contacts:

Mol	Chain	Res	Type	Clashes	Symm-Clashes
2	A	701	A1L1A	9	0
2	B	701	A1L1A	11	0

The following is a two-dimensional graphical depiction of Mogul quality analysis of bond lengths, bond angles, torsion angles, and ring geometry for all instances of the Ligand of Interest. In addition, ligands with molecular weight > 250 and outliers as shown on the validation Tables will also be included. For torsion angles, if less than 5% of the Mogul distribution of torsion angles is within 10 degrees of the torsion angle in question, then that torsion angle is considered an outlier. Any bond that is central to one or more torsion angles identified as an outlier by Mogul will be highlighted in the graph. For rings, the root-mean-square deviation (RMSD) between the ring in question and similar rings identified by Mogul is calculated over all ring torsion angles. If the average RMSD is greater than 60 degrees and the minimal RMSD between the ring in question and

any Mogul-identified rings is also greater than 60 degrees, then that ring is considered an outlier. The outliers are highlighted in purple. The color gray indicates Mogul did not find sufficient equivalents in the CSD to analyse the geometry.



5.7 Other polymers [i](#)

There are no such residues in this entry.

5.8 Polymer linkage issues [i](#)

There are no chain breaks in this entry.

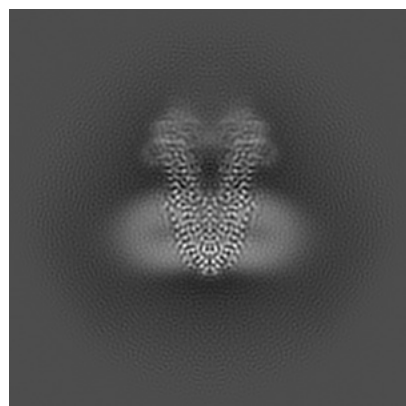
6 Map visualisation [i](#)

This section contains visualisations of the EMDB entry EMD-39871. These allow visual inspection of the internal detail of the map and identification of artifacts.

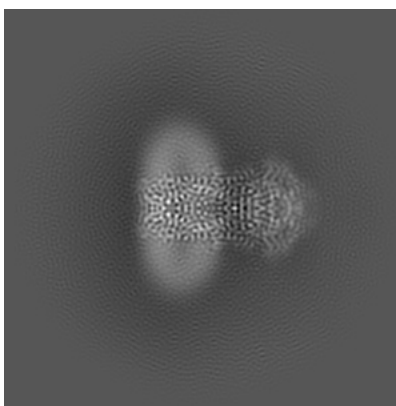
Images derived from a raw map, generated by summing the deposited half-maps, are presented below the corresponding image components of the primary map to allow further visual inspection and comparison with those of the primary map.

6.1 Orthogonal projections [i](#)

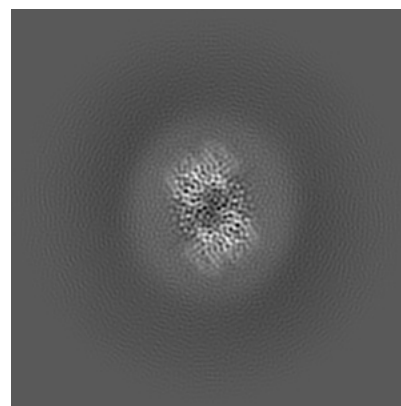
6.1.1 Primary map



X

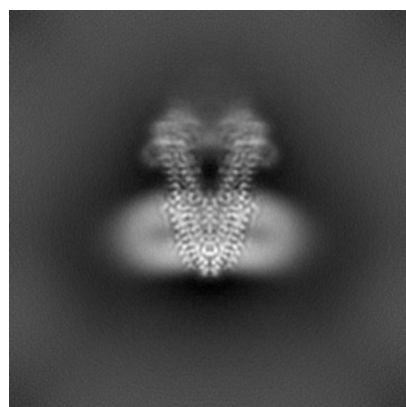


Y

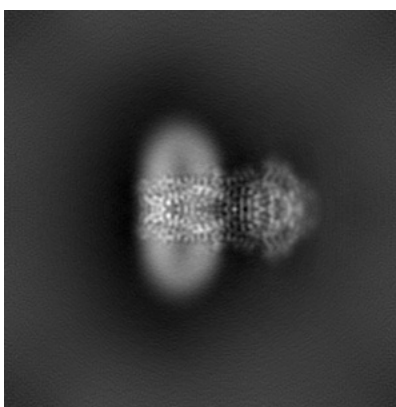


Z

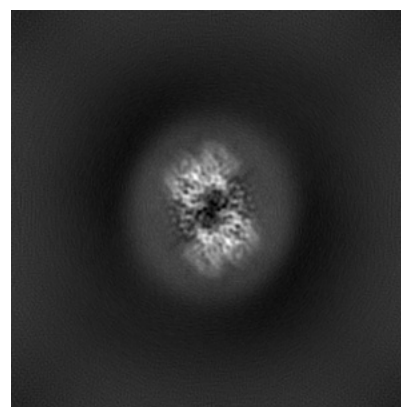
6.1.2 Raw map



X



Y

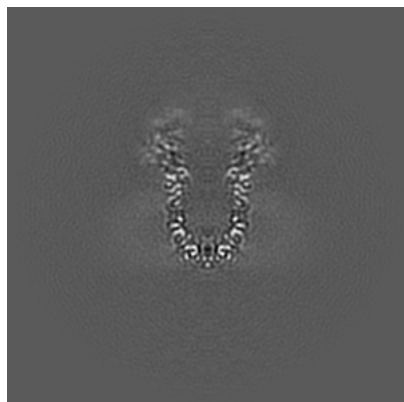


Z

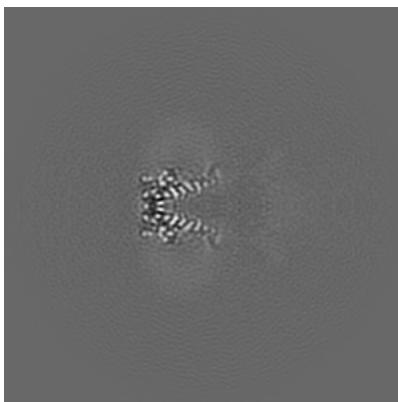
The images above show the map projected in three orthogonal directions.

6.2 Central slices [i](#)

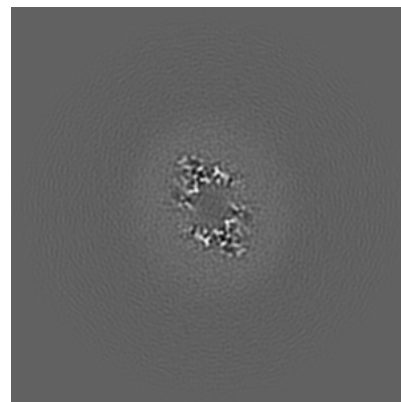
6.2.1 Primary map



X Index: 128

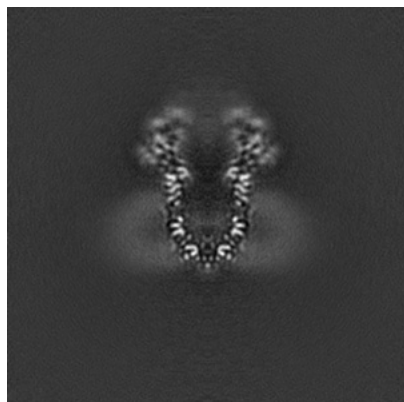


Y Index: 128

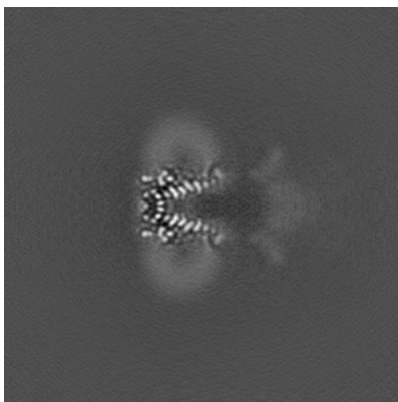


Z Index: 128

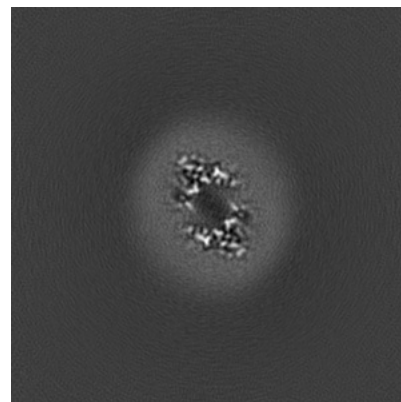
6.2.2 Raw map



X Index: 128



Y Index: 128

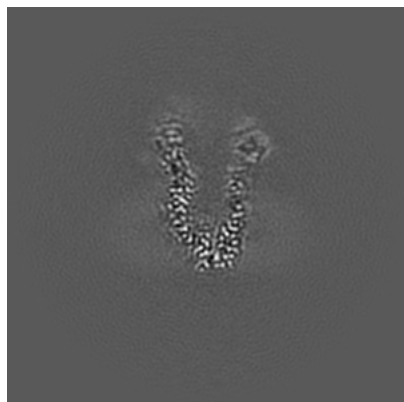


Z Index: 128

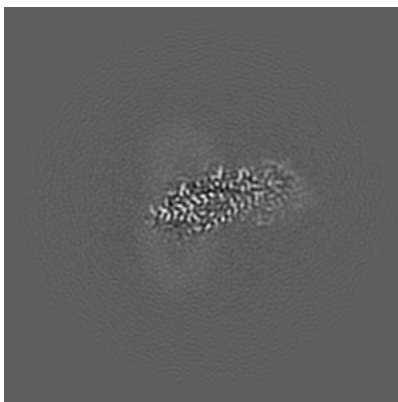
The images above show central slices of the map in three orthogonal directions.

6.3 Largest variance slices [i](#)

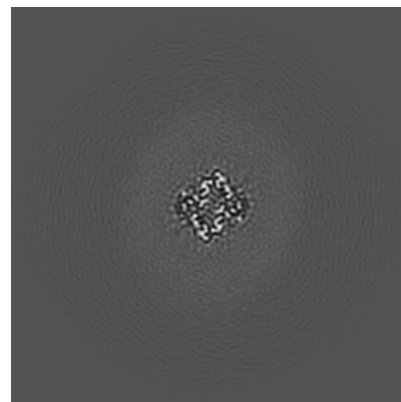
6.3.1 Primary map



X Index: 135

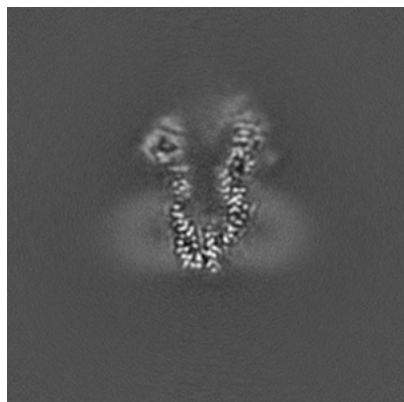


Y Index: 111

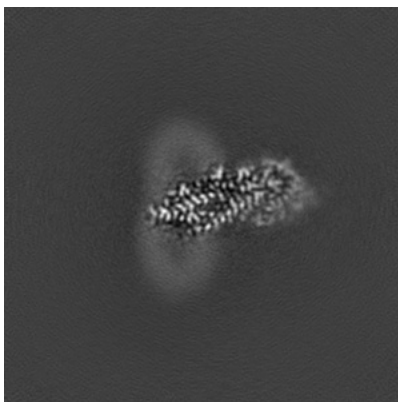


Z Index: 105

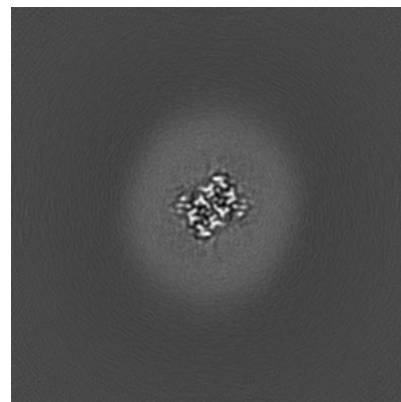
6.3.2 Raw map



X Index: 121



Y Index: 111

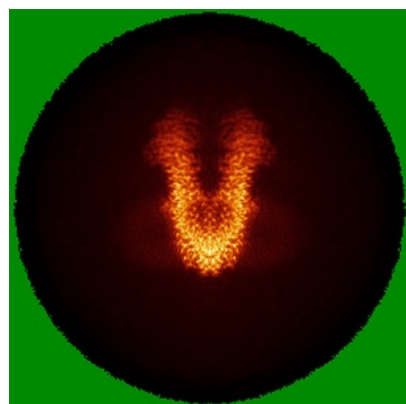


Z Index: 101

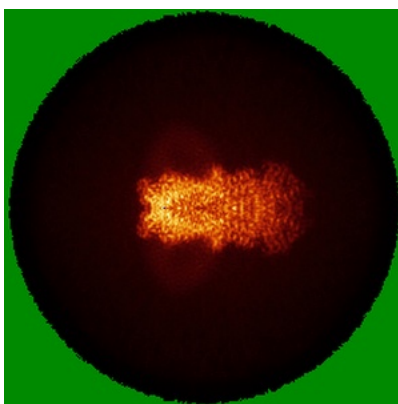
The images above show the largest variance slices of the map in three orthogonal directions.

6.4 Orthogonal standard-deviation projections (False-color) ⓘ

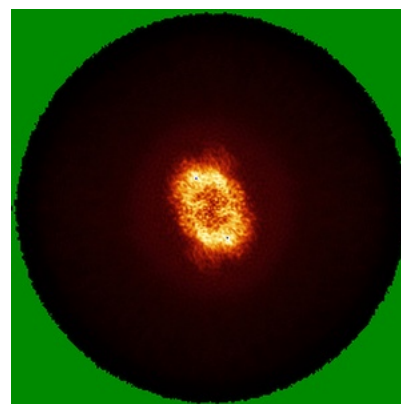
6.4.1 Primary map



X

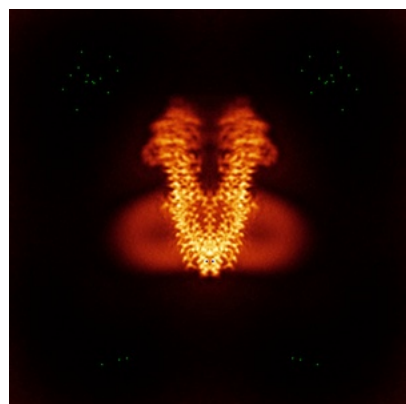


Y

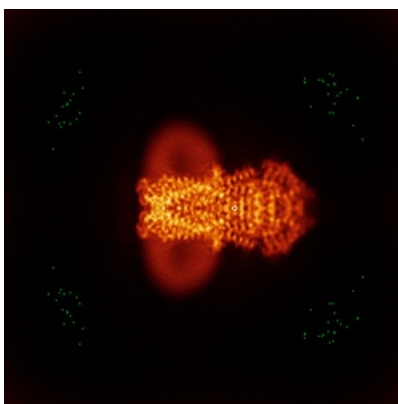


Z

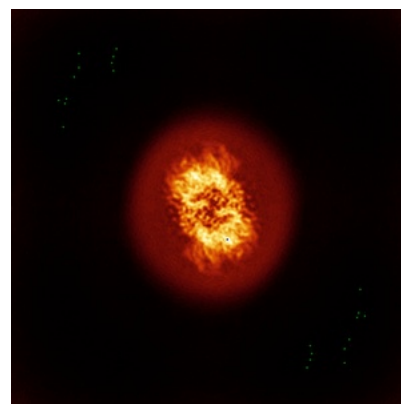
6.4.2 Raw map



X



Y

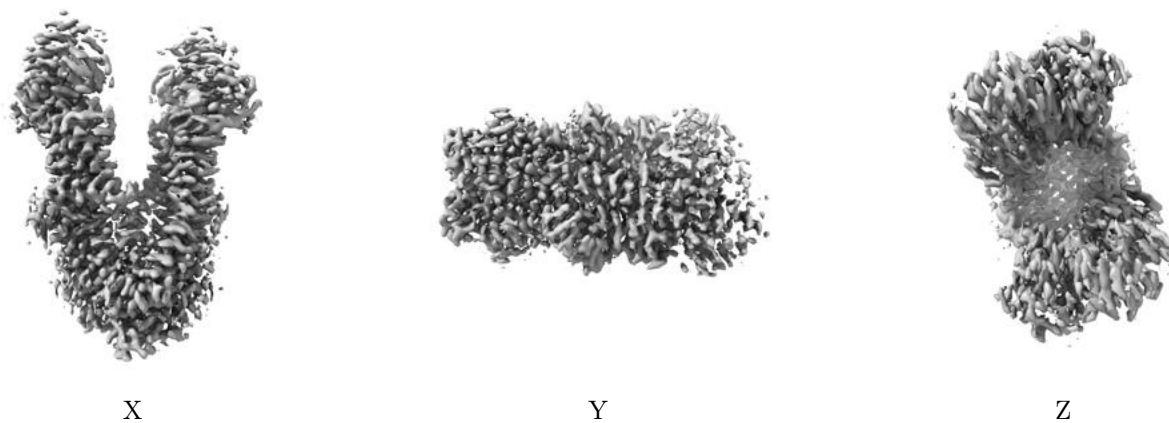


Z

The images above show the map standard deviation projections with false color in three orthogonal directions. Minimum values are shown in green, max in blue, and dark to light orange shades represent small to large values respectively.

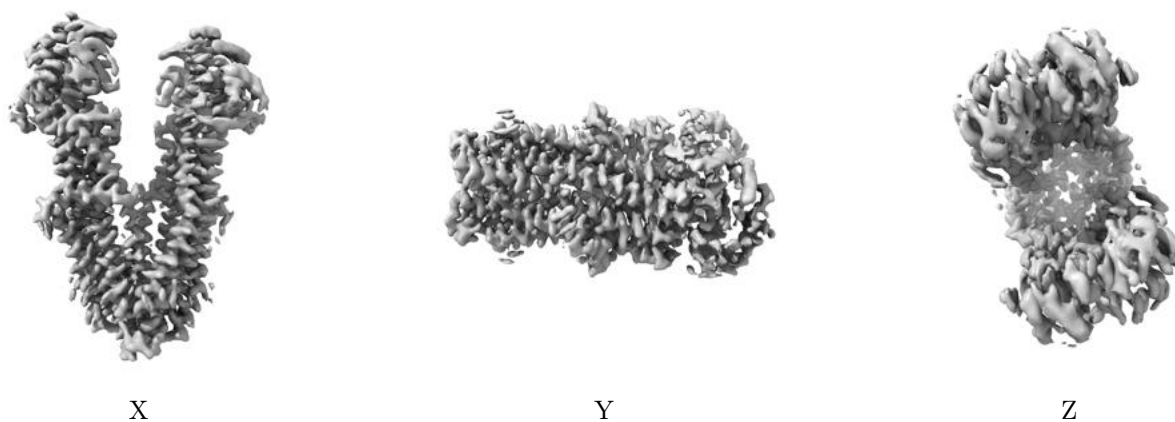
6.5 Orthogonal surface views [i](#)

6.5.1 Primary map



The images above show the 3D surface view of the map at the recommended contour level 0.371. These images, in conjunction with the slice images, may facilitate assessment of whether an appropriate contour level has been provided.

6.5.2 Raw map



These images show the 3D surface of the raw map. The raw map's contour level was selected so that its surface encloses the same volume as the primary map does at its recommended contour level.

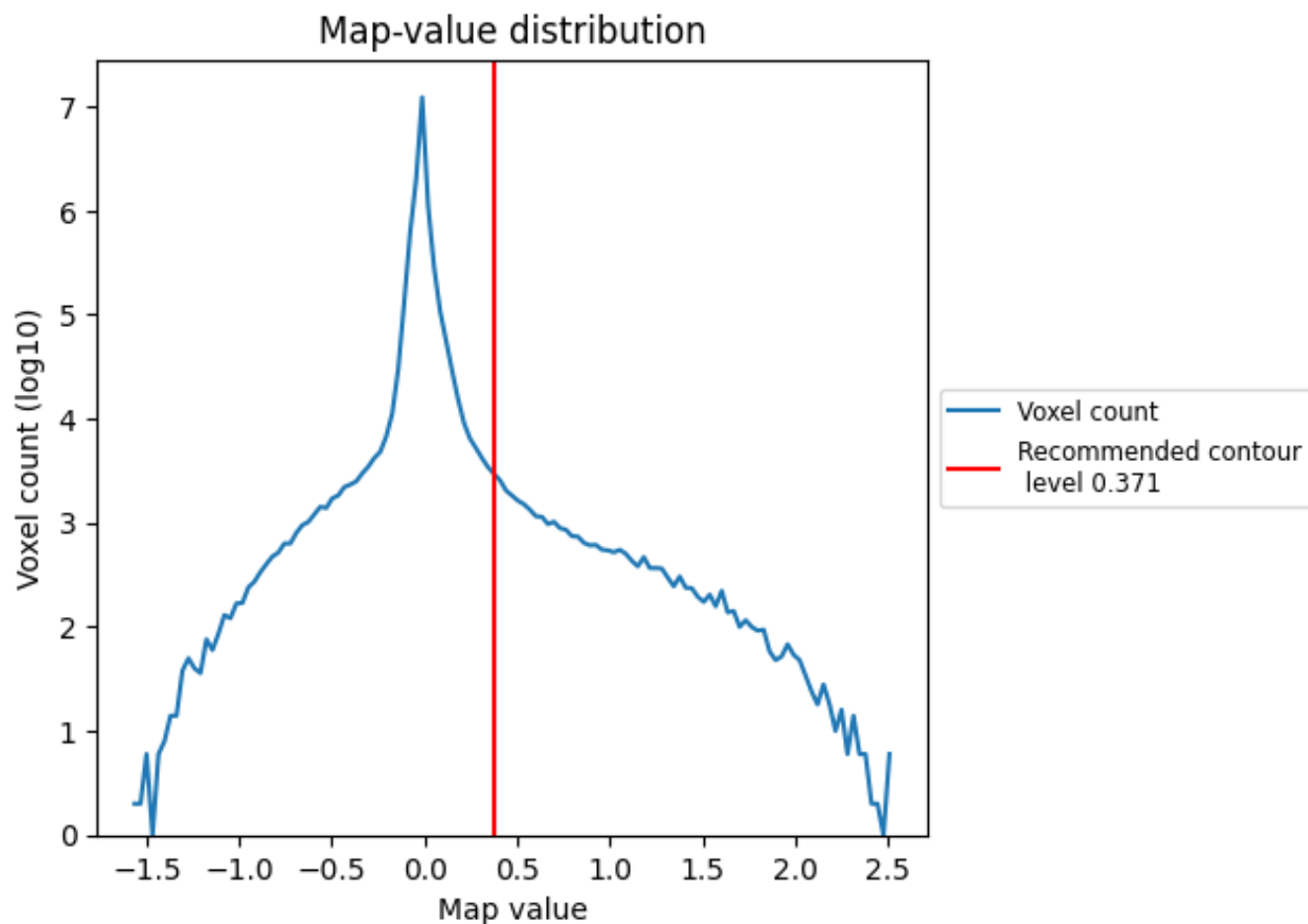
6.6 Mask visualisation [i](#)

This section was not generated. No masks/segmentation were deposited.

7 Map analysis [i](#)

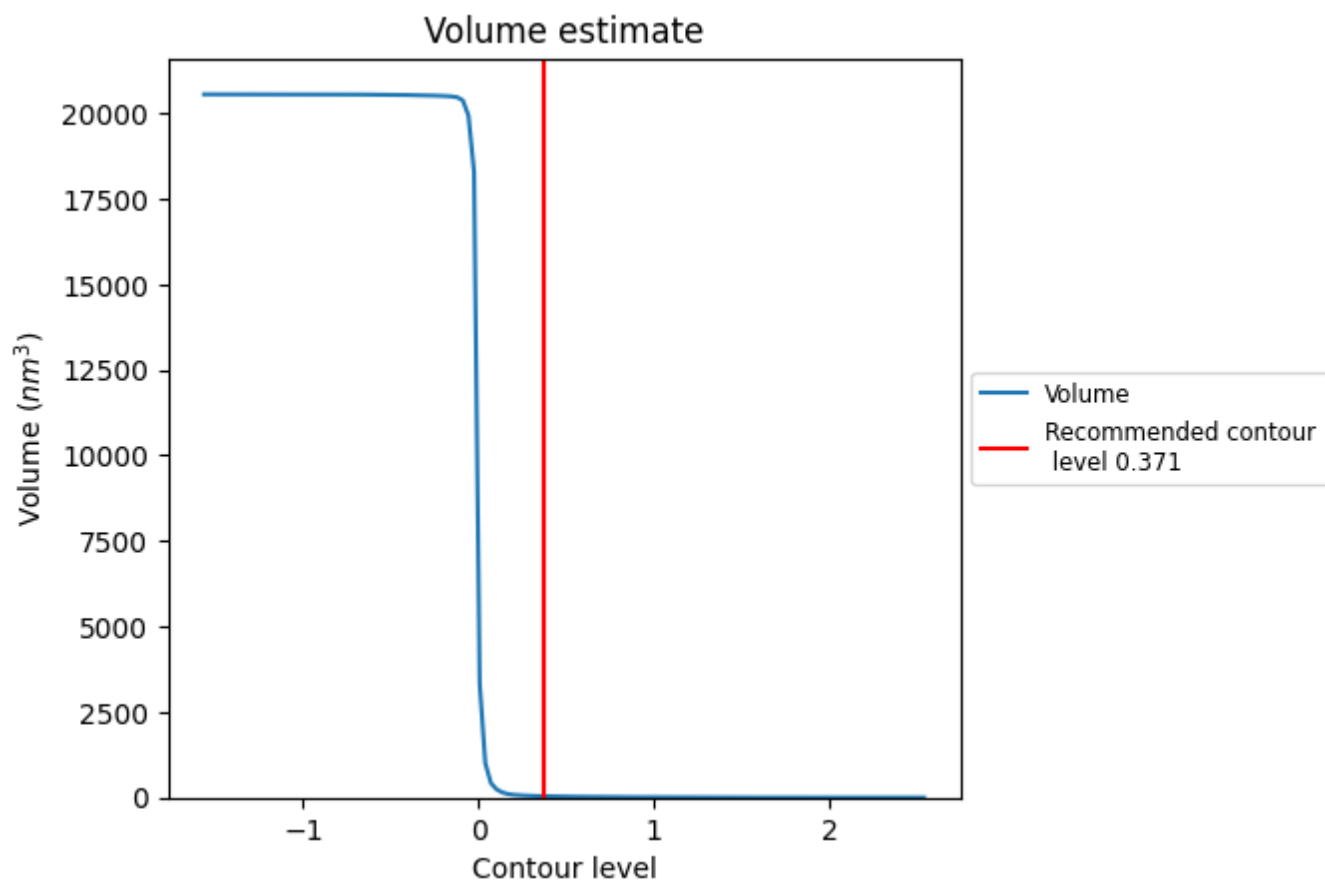
This section contains the results of statistical analysis of the map.

7.1 Map-value distribution [i](#)



The map-value distribution is plotted in 128 intervals along the x-axis. The y-axis is logarithmic. A spike in this graph at zero usually indicates that the volume has been masked.

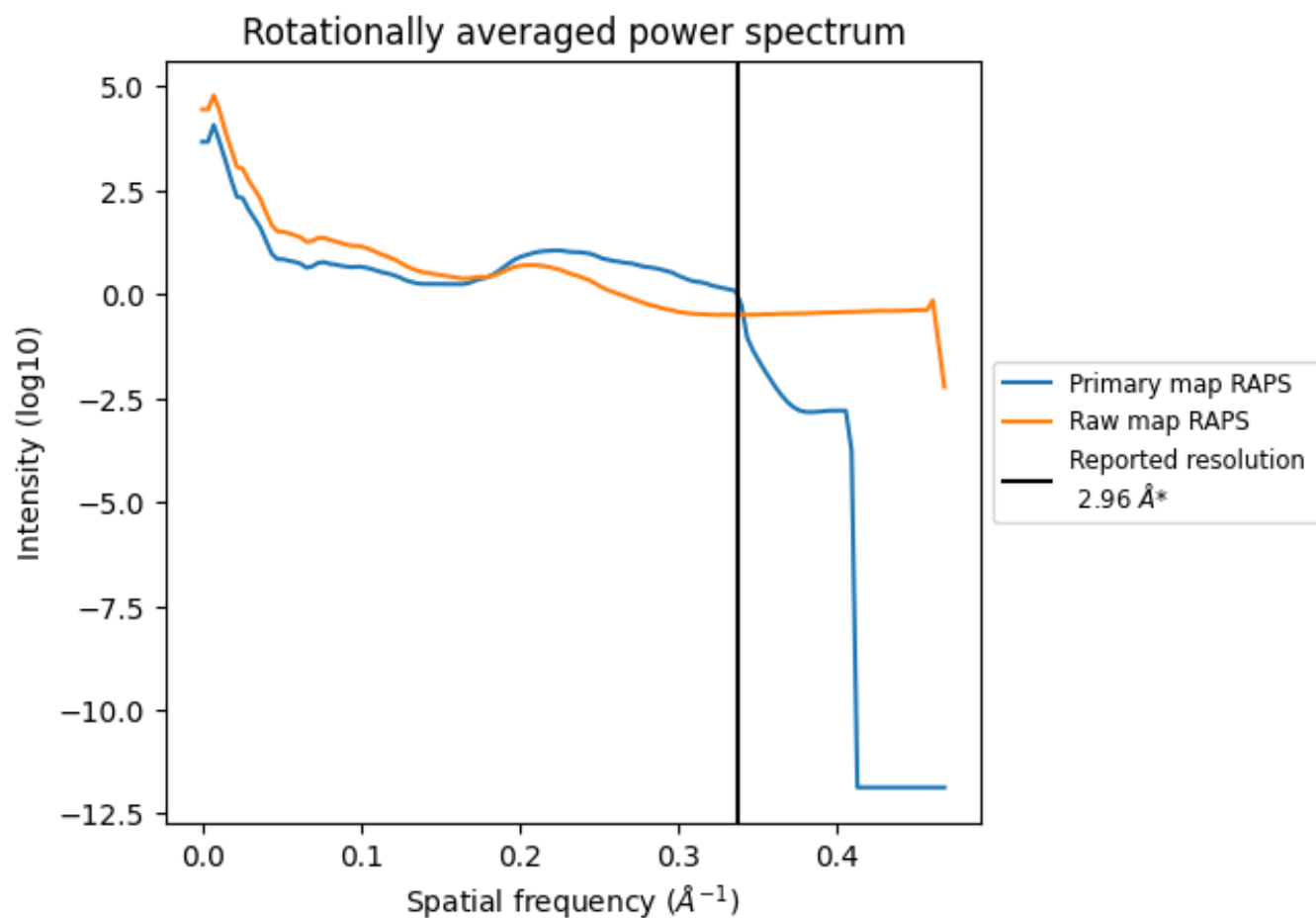
7.2 Volume estimate [i](#)



The volume at the recommended contour level is 39 nm³; this corresponds to an approximate mass of 36 kDa.

The volume estimate graph shows how the enclosed volume varies with the contour level. The recommended contour level is shown as a vertical line and the intersection between the line and the curve gives the volume of the enclosed surface at the given level.

7.3 Rotationally averaged power spectrum ⓘ

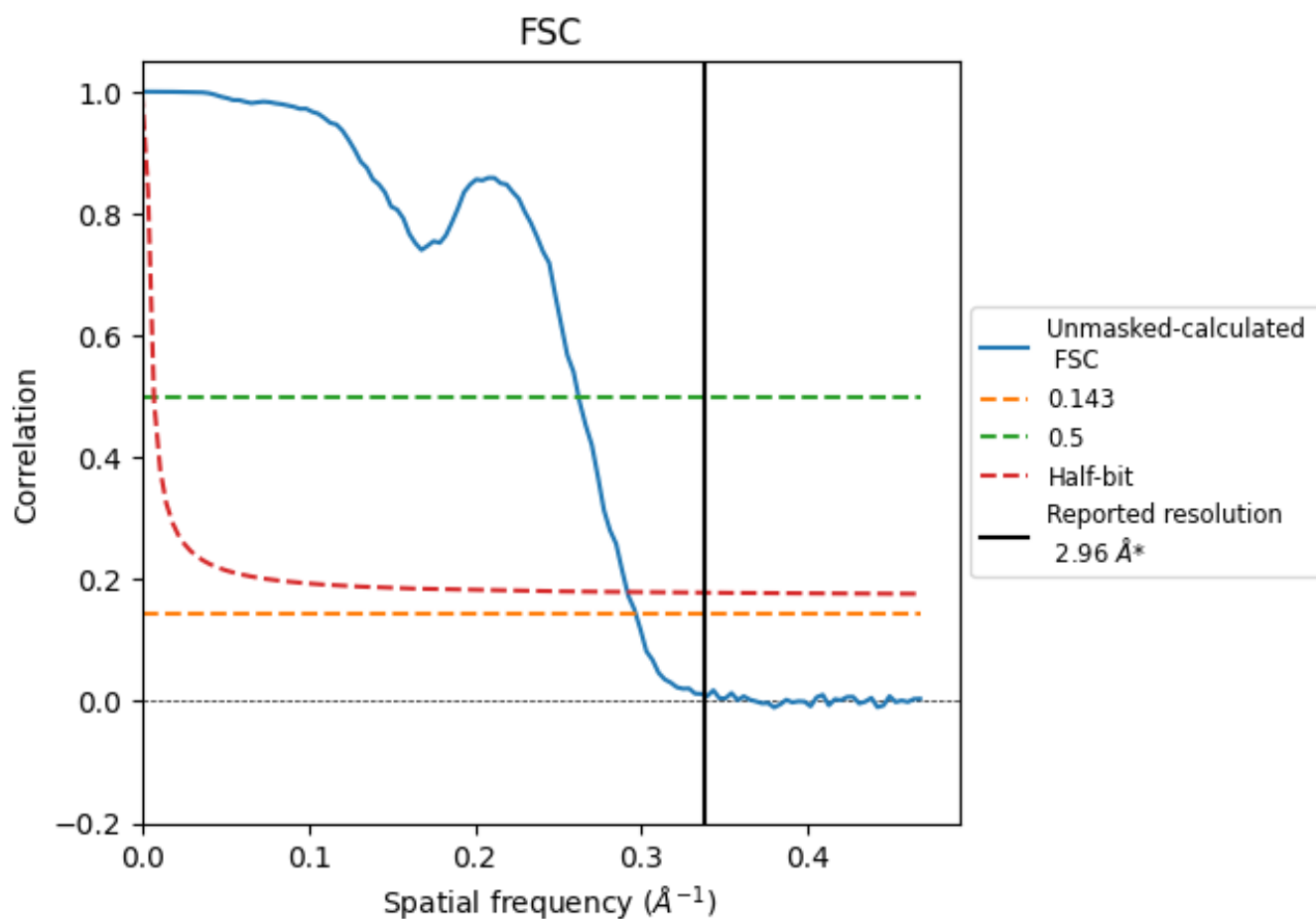


*Reported resolution corresponds to spatial frequency of 0.338 Å⁻¹

8 Fourier-Shell correlation [i](#)

Fourier-Shell Correlation (FSC) is the most commonly used method to estimate the resolution of single-particle and subtomogram-averaged maps. The shape of the curve depends on the imposed symmetry, mask and whether or not the two 3D reconstructions used were processed from a common reference. The reported resolution is shown as a black line. A curve is displayed for the half-bit criterion in addition to lines showing the 0.143 gold standard cut-off and 0.5 cut-off.

8.1 FSC [i](#)



*Reported resolution corresponds to spatial frequency of 0.338 \AA^{-1}

8.2 Resolution estimates [i](#)

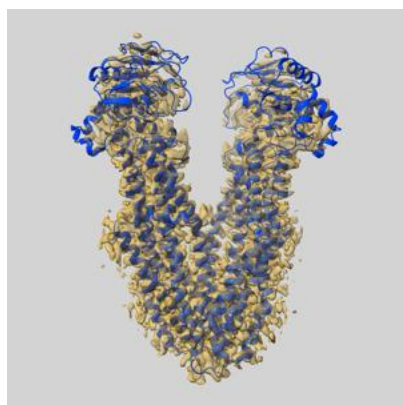
Resolution estimate (Å)	Estimation criterion (FSC cut-off)		
	0.143	0.5	Half-bit
Reported by author	2.96	-	-
Author-provided FSC curve	-	-	-
Unmasked-calculated*	3.37	3.81	3.43

*Resolution estimate based on FSC curve calculated by comparison of deposited half-maps. The value from deposited half-maps intersecting FSC 0.143 CUT-OFF 3.37 differs from the reported value 2.96 by more than 10 %

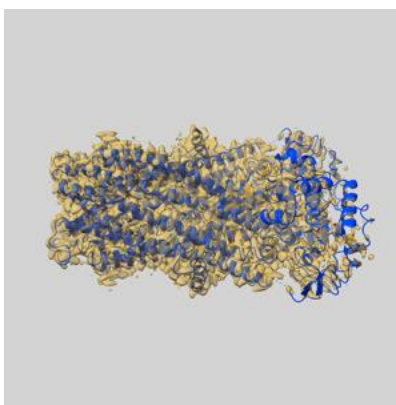
9 Map-model fit [i](#)

This section contains information regarding the fit between EMDB map EMD-39871 and PDB model 8Z9X. Per-residue inclusion information can be found in section [3](#) on page [7](#).

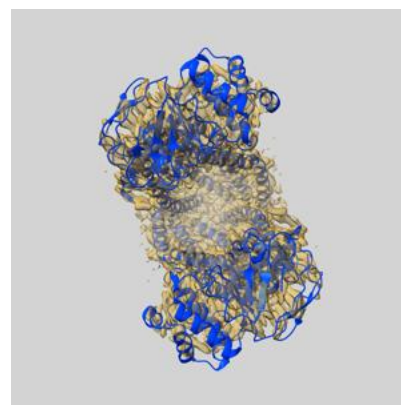
9.1 Map-model overlay [i](#)



X



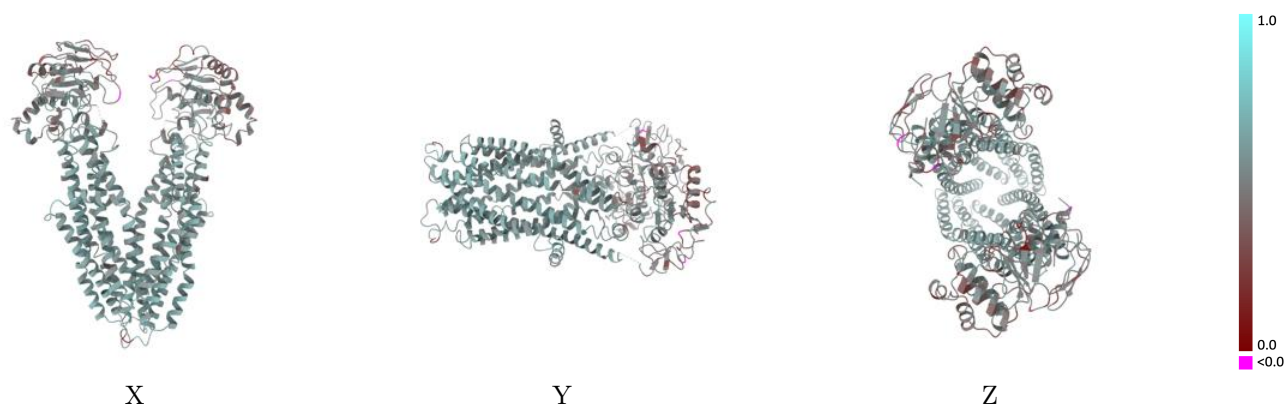
Y



Z

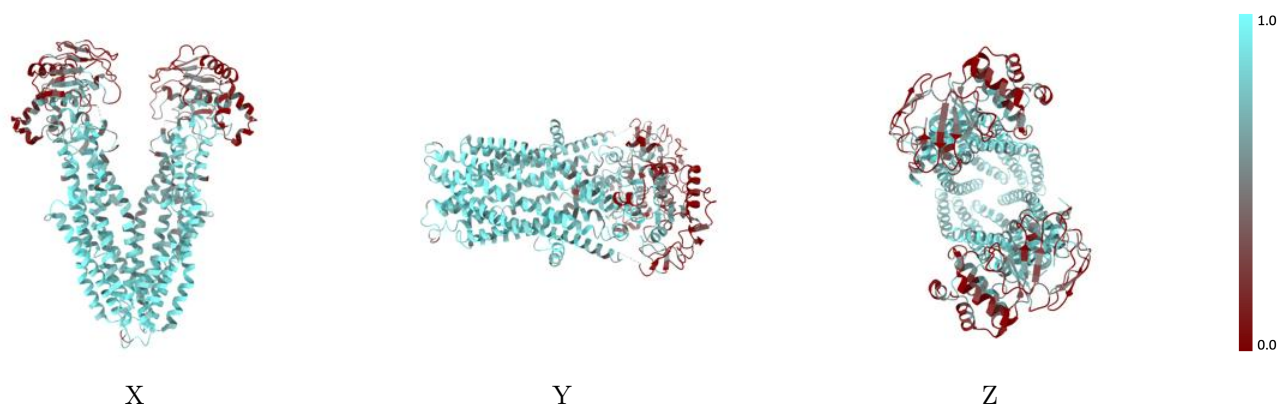
The images above show the 3D surface view of the map at the recommended contour level 0.371 at 50% transparency in yellow overlaid with a ribbon representation of the model coloured in blue. These images allow for the visual assessment of the quality of fit between the atomic model and the map.

9.2 Q-score mapped to coordinate model [i](#)



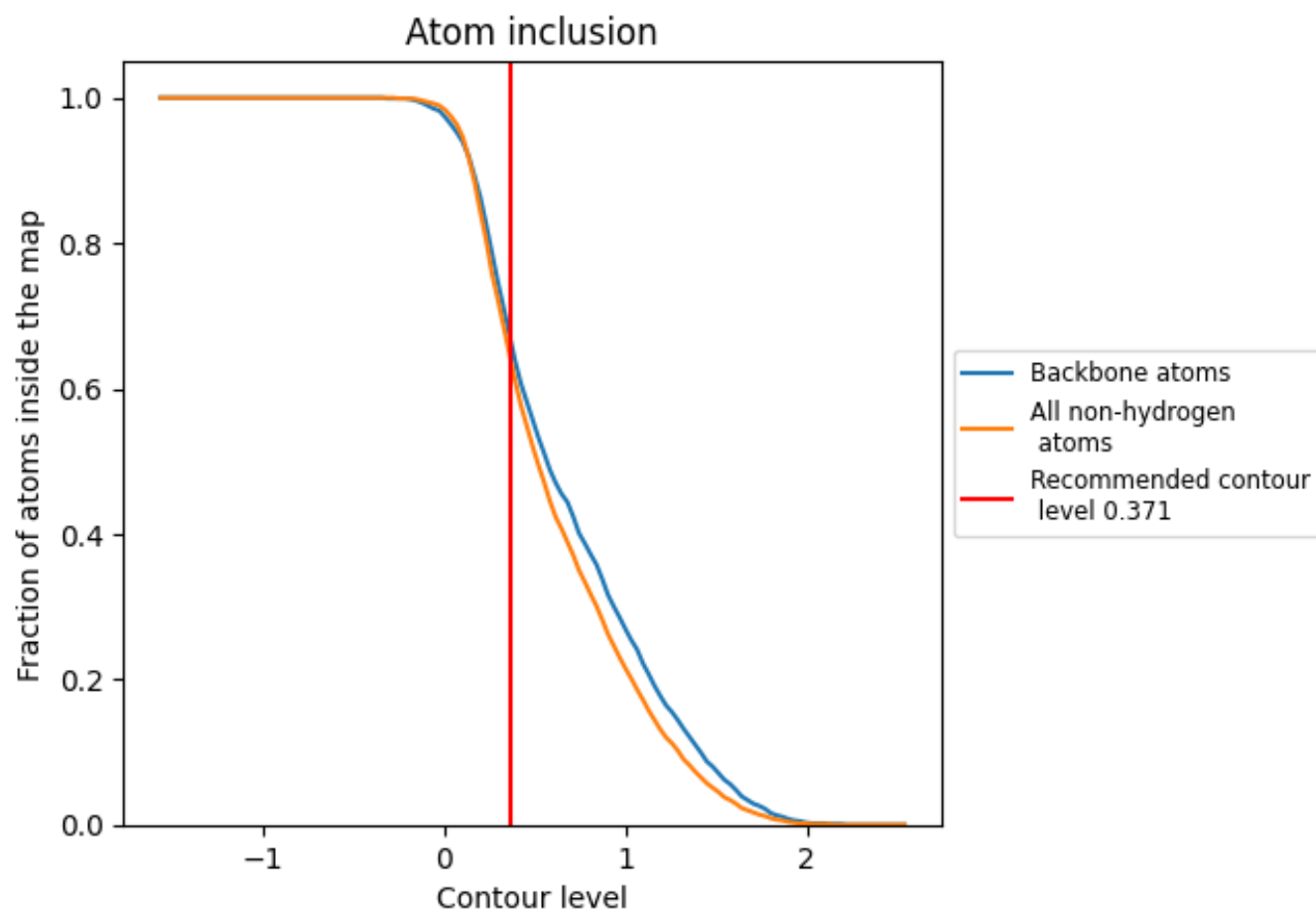
The images above show the model with each residue coloured according to its Q-score. This shows their resolvability in the map with higher Q-score values reflecting better resolvability. Please note: Q-score is calculating the resolvability of atoms, and thus high values are only expected at resolutions at which atoms can be resolved. Low Q-score values may therefore be expected for many entries.

9.3 Atom inclusion mapped to coordinate model [i](#)



The images above show the model with each residue coloured according to its atom inclusion. This shows to what extent they are inside the map at the recommended contour level (0.371).

9.4 Atom inclusion [i](#)



At the recommended contour level, 66% of all backbone atoms, 63% of all non-hydrogen atoms, are inside the map.

9.5 Map-model fit summary ⓘ

The table lists the average atom inclusion at the recommended contour level (0.371) and Q-score for the entire model and for each chain.

Chain	Atom inclusion	Q-score
All	<div></div> 0.6340	<div></div> 0.5290
A	<div></div> 0.6350	<div></div> 0.5300
B	<div></div> 0.6330	<div></div> 0.5280

