



Full wwPDB X-ray Structure Validation Report ⓘ

Jun 24, 2024 – 10:24 AM EDT

PDB ID : 6Z68
Title : A novel metagenomic alpha/beta-fold esterase
Authors : Bollinger, A.; Thies, S.; Hoepfner, A.; Kobus, S.; Jaeger, K.-E.; Smits, S.H.J.
Deposited on : 2020-05-28
Resolution : 1.35 Å(reported)

This is a Full wwPDB X-ray Structure Validation Report for a publicly released PDB entry.

We welcome your comments at validation@mail.wwpdb.org

A user guide is available at

<https://www.wwpdb.org/validation/2017/XrayValidationReportHelp>

with specific help available everywhere you see the ⓘ symbol.

The types of validation reports are described at

<http://www.wwpdb.org/validation/2017/FAQs#types>.

The following versions of software and data (see [references ⓘ](#)) were used in the production of this report:

MolProbity : 4.02b-467
Mogul : 2022.3.0, CSD as543be (2022)
Xtriage (Phenix) : 1.20.1
EDS : 2.37.1
Percentile statistics : 20191225.v01 (using entries in the PDB archive December 25th 2019)
Refmac : 5.8.0158
CCP4 : 7.0.044 (Gargrove)
Ideal geometry (proteins) : Engh & Huber (2001)
Ideal geometry (DNA, RNA) : Parkinson et al. (1996)
Validation Pipeline (wwPDB-VP) : 2.37.1

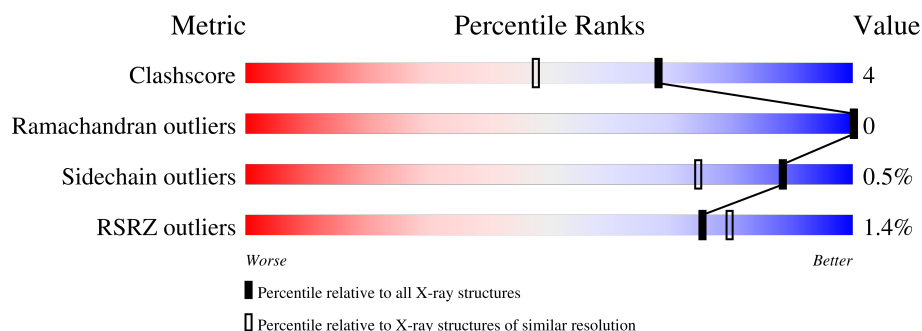
1 Overall quality at a glance

The following experimental techniques were used to determine the structure:

X-RAY DIFFRACTION

The reported resolution of this entry is 1.35 Å.

Percentile scores (ranging between 0-100) for global validation metrics of the entry are shown in the following graphic. The table shows the number of entries on which the scores are based.



Metric	Whole archive (#Entries)	Similar resolution (#Entries, resolution range(Å))
Clashscore	141614	1551 (1.38-1.34)
Ramachandran outliers	138981	1530 (1.38-1.34)
Sidechain outliers	138945	1530 (1.38-1.34)
RSRZ outliers	127900	1487 (1.38-1.34)

The table below summarises the geometric issues observed across the polymeric chains and their fit to the electron density. The red, orange, yellow and green segments of the lower bar indicate the fraction of residues that contain outliers for ≥ 3 , 2, 1 and 0 types of geometric quality criteria respectively. A grey segment represents the fraction of residues that are not modelled. The numeric value for each fraction is indicated below the corresponding segment, with a dot representing fractions $\leq 5\%$. The upper red bar (where present) indicates the fraction of residues that have poor fit to the electron density. The numeric value is given above the bar.

Mol	Chain	Length	Quality of chain
1	A	376	
1	B	376	

2 Entry composition

There are 5 unique types of molecules in this entry. The entry contains 6484 atoms, of which 0 are hydrogens and 0 are deuteriums.

In the tables below, the ZeroOcc column contains the number of atoms modelled with zero occupancy, the AltConf column contains the number of residues with at least one atom in alternate conformation and the Trace column contains the number of residues modelled with at most 2 atoms.

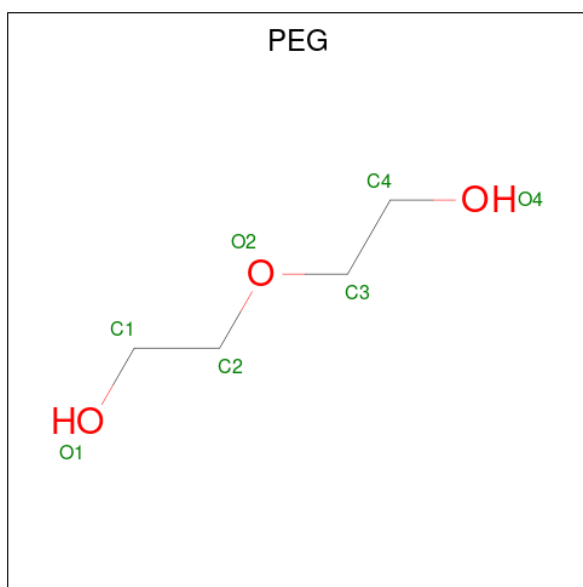
- Molecule 1 is a protein called Acetyl esterase/lipase.

Mol	Chain	Residues	Atoms					ZeroOcc	AltConf	Trace
1	A	363	Total	C	N	O	S	0	6	0
			2773	1749	495	514	15			
1	B	357	Total	C	N	O	S	0	8	0
			2734	1726	486	506	16			

There are 18 discrepancies between the modelled and reference sequences:

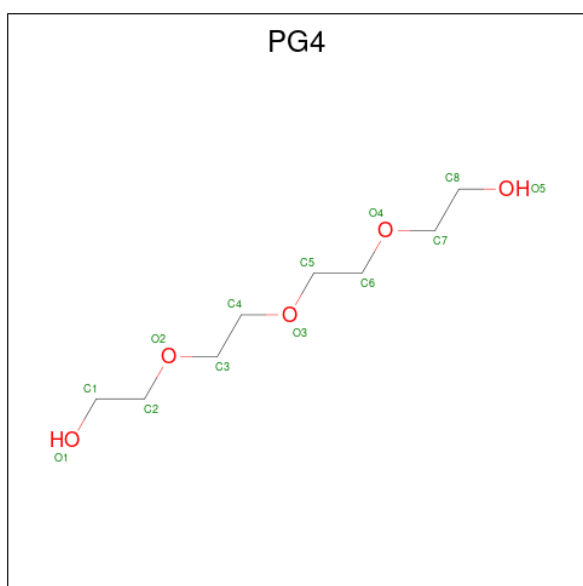
Chain	Residue	Modelled	Actual	Comment	Reference
A	271	VAL	LEU	conflict	UNP A0A1M6Y2K1
A	369	LEU	-	expression tag	UNP A0A1M6Y2K1
A	370	GLU	-	expression tag	UNP A0A1M6Y2K1
A	371	HIS	-	expression tag	UNP A0A1M6Y2K1
A	372	HIS	-	expression tag	UNP A0A1M6Y2K1
A	373	HIS	-	expression tag	UNP A0A1M6Y2K1
A	374	HIS	-	expression tag	UNP A0A1M6Y2K1
A	375	HIS	-	expression tag	UNP A0A1M6Y2K1
A	376	HIS	-	expression tag	UNP A0A1M6Y2K1
B	271	VAL	LEU	conflict	UNP A0A1M6Y2K1
B	369	LEU	-	expression tag	UNP A0A1M6Y2K1
B	370	GLU	-	expression tag	UNP A0A1M6Y2K1
B	371	HIS	-	expression tag	UNP A0A1M6Y2K1
B	372	HIS	-	expression tag	UNP A0A1M6Y2K1
B	373	HIS	-	expression tag	UNP A0A1M6Y2K1
B	374	HIS	-	expression tag	UNP A0A1M6Y2K1
B	375	HIS	-	expression tag	UNP A0A1M6Y2K1
B	376	HIS	-	expression tag	UNP A0A1M6Y2K1

- Molecule 2 is DI(HYDROXYETHYL)ETHER (three-letter code: PEG) (formula: C₄H₁₀O₃).



Mol	Chain	Residues	Atoms			ZeroOcc	AltConf
2	A	1	Total	C	O	0	0
			7	4	3		
2	B	1	Total	C	O	0	0
			7	4	3		

- Molecule 3 is TETRAETHYLENE GLYCOL (three-letter code: PG4) (formula: $C_8H_{18}O_5$).



Mol	Chain	Residues	Atoms			ZeroOcc	AltConf
3	A	1	Total	C	O	0	0
			13	8	5		
3	B	1	Total	C	O	0	0
			13	8	5		

- Molecule 4 is MAGNESIUM ION (three-letter code: MG) (formula: Mg).

Mol	Chain	Residues	Atoms		ZeroOcc	AltConf
4	B	1	Total 1	Mg 1	0	0

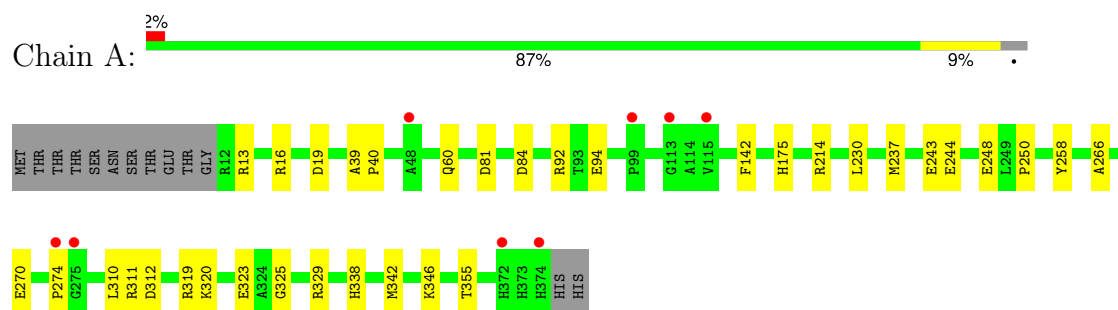
- Molecule 5 is water.

Mol	Chain	Residues	Atoms		ZeroOcc	AltConf
5	A	477	Total 477	O 477	0	0
5	B	459	Total 459	O 459	0	0

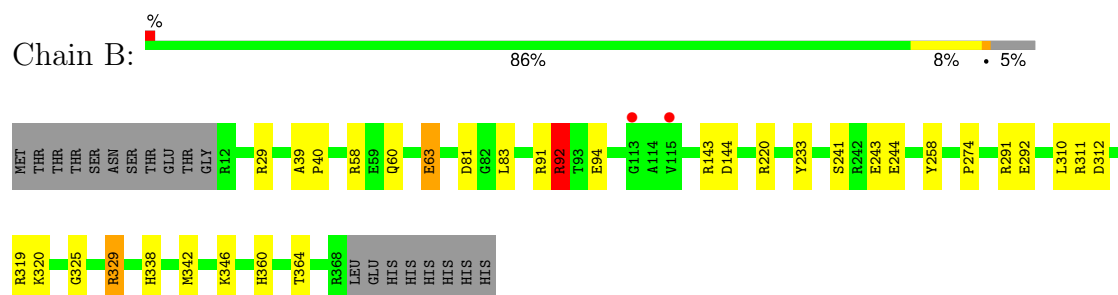
3 Residue-property plots [i](#)

These plots are drawn for all protein, RNA, DNA and oligosaccharide chains in the entry. The first graphic for a chain summarises the proportions of the various outlier classes displayed in the second graphic. The second graphic shows the sequence view annotated by issues in geometry and electron density. Residues are color-coded according to the number of geometric quality criteria for which they contain at least one outlier: green = 0, yellow = 1, orange = 2 and red = 3 or more. A red dot above a residue indicates a poor fit to the electron density ($RSRZ > 2$). Stretches of 2 or more consecutive residues without any outlier are shown as a green connector. Residues present in the sample, but not in the model, are shown in grey.

- Molecule 1: Acetyl esterase/lipase



- Molecule 1: Acetyl esterase/lipase



4 Data and refinement statistics

Property	Value	Source
Space group	P 21 2 21	Depositor
Cell constants a, b, c, α , β , γ	58.71Å 77.19Å 162.51Å 90.00° 90.00° 90.00°	Depositor
Resolution (Å)	55.28 – 1.35 55.22 – 1.35	Depositor EDS
% Data completeness (in resolution range)	96.5 (55.28-1.35) 96.5 (55.22-1.35)	Depositor EDS
R_{merge}	0.06	Depositor
R_{sym}	(Not available)	Depositor
$\langle I/\sigma(I) \rangle$ ¹	1.86 (at 1.35Å)	Xtriage
Refinement program	REFMAC 5.8.0238	Depositor
R, R_{free}	0.138 , 0.184 (Not available) , (Not available)	Depositor DCC
R_{free} test set	1994 reflections (1.28%)	wwPDB-VP
Wilson B-factor (Å ²)	10.2	Xtriage
Anisotropy	1.651	Xtriage
Bulk solvent k_{sol} (e/Å ³), B_{sol} (Å ²)	0.35 , 50.8	EDS
L-test for twinning ²	$\langle L \rangle = 0.50$, $\langle L^2 \rangle = 0.34$	Xtriage
Estimated twinning fraction	No twinning to report.	Xtriage
F_o, F_c correlation	0.98	EDS
Total number of atoms	6484	wwPDB-VP
Average B, all atoms (Å ²)	20.0	wwPDB-VP

Xtriage's analysis on translational NCS is as follows: *The largest off-origin peak in the Patterson function is 4.47% of the height of the origin peak. No significant pseudotranslation is detected.*

¹Intensities estimated from amplitudes.

²Theoretical values of $\langle |L| \rangle$, $\langle L^2 \rangle$ for acentric reflections are 0.5, 0.333 respectively for untwinned datasets, and 0.375, 0.2 for perfectly twinned datasets.

5 Model quality

5.1 Standard geometry

Bond lengths and bond angles in the following residue types are not validated in this section: MG, PEG, PG4

The Z score for a bond length (or angle) is the number of standard deviations the observed value is removed from the expected value. A bond length (or angle) with $|Z| > 5$ is considered an outlier worth inspection. RMSZ is the root-mean-square of all Z scores of the bond lengths (or angles).

Mol	Chain	Bond lengths		Bond angles	
		RMSZ	$\# Z > 5$	RMSZ	$\# Z > 5$
1	A	1.06	8/2861 (0.3%)	1.08	13/3899 (0.3%)
1	B	0.96	6/2827 (0.2%)	1.08	21/3852 (0.5%)
All	All	1.01	14/5688 (0.2%)	1.08	34/7751 (0.4%)

All (14) bond length outliers are listed below:

Mol	Chain	Res	Type	Atoms	Z	Observed(Å)	Ideal(Å)
1	A	243	GLU	CD-OE2	18.72	1.46	1.25
1	B	243	GLU	CD-OE2	12.67	1.39	1.25
1	A	274	PRO	N-CA	11.30	1.66	1.47
1	A	270	GLU	CD-OE1	11.11	1.37	1.25
1	A	243	GLU	CD-OE1	10.42	1.37	1.25
1	B	63	GLU	CD-OE2	9.50	1.36	1.25
1	B	274	PRO	C-N	8.90	1.49	1.33
1	B	243	GLU	CD-OE1	7.55	1.33	1.25
1	A	329	ARG	CZ-NH2	6.86	1.42	1.33
1	A	13	ARG	C-N	6.59	1.46	1.34
1	B	63	GLU	CD-OE1	6.51	1.32	1.25
1	A	244	GLU	CG-CD	5.61	1.60	1.51
1	B	292	GLU	CD-OE2	5.43	1.31	1.25
1	A	323	GLU	CD-OE1	-5.23	1.19	1.25

All (34) bond angle outliers are listed below:

Mol	Chain	Res	Type	Atoms	Z	Observed(°)	Ideal(°)
1	B	329[A]	ARG	NE-CZ-NH2	9.11	124.85	120.30
1	B	329[B]	ARG	NE-CZ-NH2	9.11	124.85	120.30
1	A	312[A]	ASP	CB-CG-OD2	8.90	126.31	118.30
1	A	312[B]	ASP	CB-CG-OD2	8.90	126.31	118.30
1	A	92	ARG	NE-CZ-NH1	8.76	124.68	120.30

Continued on next page...

Continued from previous page...

Mol	Chain	Res	Type	Atoms	Z	Observed(°)	Ideal(°)
1	B	258	TYR	CB-CG-CD1	8.54	126.12	121.00
1	A	13	ARG	CG-CD-NE	-8.45	94.05	111.80
1	B	329[A]	ARG	NE-CZ-NH1	-7.77	116.42	120.30
1	B	329[B]	ARG	NE-CZ-NH1	-7.77	116.42	120.30
1	B	92	ARG	NE-CZ-NH2	-7.29	116.66	120.30
1	B	311	ARG	NE-CZ-NH1	6.80	123.70	120.30
1	A	258	TYR	CB-CG-CD1	6.68	125.01	121.00
1	B	329[A]	ARG	CG-CD-NE	6.65	125.76	111.80
1	B	329[B]	ARG	CG-CD-NE	6.65	125.76	111.80
1	B	29	ARG	NE-CZ-NH2	-6.64	116.98	120.30
1	A	13	ARG	NE-CZ-NH1	-6.12	117.24	120.30
1	B	144	ASP	CB-CG-OD2	-6.03	112.88	118.30
1	B	58	ARG	NE-CZ-NH2	-5.89	117.35	120.30
1	A	311	ARG	NE-CZ-NH1	5.81	123.20	120.30
1	B	143	ARG	NE-CZ-NH2	-5.71	117.45	120.30
1	B	92	ARG	NE-CZ-NH1	5.60	123.10	120.30
1	A	319	ARG	NE-CZ-NH2	-5.37	117.62	120.30
1	B	143	ARG	NE-CZ-NH1	5.30	122.95	120.30
1	B	258	TYR	CB-CG-CD2	-5.29	117.82	121.00
1	A	60	GLN	O-C-N	5.12	130.90	122.70
1	A	13	ARG	O-C-N	-5.10	111.40	121.10
1	B	233	TYR	CB-CG-CD2	-5.10	117.94	121.00
1	B	311	ARG	NE-CZ-NH2	-5.09	117.75	120.30
1	B	329[A]	ARG	CB-CA-C	-5.09	100.22	110.40
1	B	329[B]	ARG	CB-CA-C	-5.09	100.22	110.40
1	A	312[A]	ASP	CB-CG-OD1	-5.04	113.76	118.30
1	A	312[B]	ASP	CB-CG-OD1	-5.04	113.76	118.30
1	A	266	ALA	O-C-N	5.04	130.76	122.70
1	B	220	ARG	NE-CZ-NH2	-5.00	117.80	120.30

There are no chirality outliers.

There are no planarity outliers.

5.2 Too-close contacts

In the following table, the Non-H and H(model) columns list the number of non-hydrogen atoms and hydrogen atoms in the chain respectively. The H(added) column lists the number of hydrogen atoms added and optimized by MolProbity. The Clashes column lists the number of clashes within the asymmetric unit, whereas Symm-Clashes lists symmetry-related clashes.

Mol	Chain	Non-H	H(model)	H(added)	Clashes	Symm-Clashes
1	A	2773	0	2707	21	0
1	B	2734	0	2691	19	0
2	A	7	0	10	0	0
2	B	7	0	10	2	0
3	A	13	0	18	0	0
3	B	13	0	18	0	0
4	B	1	0	0	0	0
5	A	477	0	0	6	0
5	B	459	0	0	14	0
All	All	6484	0	5454	42	0

The all-atom clashscore is defined as the number of clashes found per 1000 atoms (including hydrogen atoms). The all-atom clashscore for this structure is 4.

All (42) close contacts within the same asymmetric unit are listed below, sorted by their clash magnitude.

Atom-1	Atom-2	Interatomic distance (Å)	Clash overlap (Å)
1:A:230:LEU:HD22	1:A:342[B]:MET:CE	1.67	1.25
1:A:230:LEU:HD22	1:A:342[B]:MET:HE3	1.04	1.02
1:A:320:LYS:HE2	5:A:787:HOH:O	1.57	0.99
1:A:230:LEU:CD2	1:A:342[B]:MET:HE3	1.98	0.93
1:A:230:LEU:CD2	1:A:342[B]:MET:CE	2.56	0.81
1:B:312[A]:ASP:OD1	5:B:501:HOH:O	2.06	0.74
1:A:230:LEU:HD22	1:A:342[B]:MET:HE1	1.68	0.73
1:B:319:ARG:NH2	5:B:502:HOH:O	2.19	0.73
1:B:342[B]:MET:HE1	5:B:596:HOH:O	1.90	0.71
1:B:81:ASP:O	1:B:346:LYS:HE2	1.90	0.71
1:A:94:GLU:OE1	5:A:501:HOH:O	2.10	0.70
1:B:60:GLN:HG2	5:B:892:HOH:O	1.92	0.68
1:B:342[B]:MET:SD	5:B:778:HOH:O	2.54	0.65
1:B:241:SER:OG	1:B:244:GLU:HG3	1.99	0.61
1:B:325:GLY:HA2	5:B:760:HOH:O	2.02	0.59
1:A:310[B]:LEU:HD12	1:A:338:HIS:CE1	2.38	0.57
1:A:325:GLY:HA2	5:A:783:HOH:O	2.06	0.55
1:A:320:LYS:HE3	5:A:796:HOH:O	2.05	0.55
1:A:342[B]:MET:HE2	1:A:355:THR:HG21	1.89	0.54
1:A:346:LYS:HE3	5:A:733:HOH:O	2.07	0.54
1:A:175:HIS:ND1	1:A:214:ARG:NH1	2.44	0.53
1:B:329[B]:ARG:CZ	5:B:535:HOH:O	2.57	0.52
2:B:401:PEG:H22	5:B:674:HOH:O	2.08	0.52
1:A:230:LEU:CD2	1:A:342[B]:MET:HE1	2.34	0.51
1:A:346:LYS:CE	5:A:733:HOH:O	2.58	0.50

Continued on next page...

Continued from previous page...

Atom-1	Atom-2	Interatomic distance (Å)	Clash overlap (Å)
1:B:320:LYS:HE3	5:B:748:HOH:O	2.11	0.50
1:A:81:ASP:O	1:A:346:LYS:NZ	2.45	0.49
1:A:342[B]:MET:CE	1:A:355:THR:HG21	2.42	0.49
1:B:310[B]:LEU:HD12	1:B:338:HIS:CE1	2.48	0.48
1:B:91[B]:ARG:NH1	5:B:514:HOH:O	2.50	0.45
1:B:291:ARG:NH2	5:B:515:HOH:O	2.50	0.45
1:B:83:LEU:HD21	1:B:346:LYS:HG2	2.00	0.44
1:A:39:ALA:N	1:A:40:PRO:CD	2.81	0.43
1:B:63:GLU:CG	5:B:814:HOH:O	2.66	0.43
1:B:92:ARG:HD2	5:B:699:HOH:O	2.19	0.43
1:A:142:PHE:CE1	1:A:342[B]:MET:HG2	2.55	0.42
1:B:92:ARG:NH1	1:B:94:GLU:OE1	2.53	0.42
1:A:237[B]:MET:HE1	1:A:248:GLU:HG2	2.03	0.41
1:B:39:ALA:N	1:B:40:PRO:CD	2.84	0.41
1:B:360:HIS:O	1:B:364:THR:HG23	2.21	0.41
1:A:16:ARG:HA	1:A:19:ASP:O	2.21	0.40
2:B:401:PEG:H11	5:B:674:HOH:O	2.21	0.40

There are no symmetry-related clashes.

5.3 Torsion angles ⓘ

5.3.1 Protein backbone ⓘ

In the following table, the Percentiles column shows the percent Ramachandran outliers of the chain as a percentile score with respect to all X-ray entries followed by that with respect to entries of similar resolution.

The Analysed column shows the number of residues for which the backbone conformation was analysed, and the total number of residues.

Mol	Chain	Analysed	Favoured	Allowed	Outliers	Percentiles	
1	A	367/376 (98%)	354 (96%)	13 (4%)	0	100	100
1	B	363/376 (96%)	353 (97%)	10 (3%)	0	100	100
All	All	730/752 (97%)	707 (97%)	23 (3%)	0	100	100

There are no Ramachandran outliers to report.

5.3.2 Protein sidechains [i](#)

In the following table, the Percentiles column shows the percent sidechain outliers of the chain as a percentile score with respect to all X-ray entries followed by that with respect to entries of similar resolution.

The Analysed column shows the number of residues for which the sidechain conformation was analysed, and the total number of residues.

Mol	Chain	Analysed	Rotameric	Outliers	Percentiles	
1	A	283/291 (97%)	281 (99%)	2 (1%)	84	64
1	B	280/291 (96%)	279 (100%)	1 (0%)	91	81
All	All	563/582 (97%)	560 (100%)	3 (0%)	88	74

All (3) residues with a non-rotameric sidechain are listed below:

Mol	Chain	Res	Type
1	A	84	ASP
1	A	250	PRO
1	B	92	ARG

Sometimes sidechains can be flipped to improve hydrogen bonding and reduce clashes. There are no such sidechains identified.

5.3.3 RNA [i](#)

There are no RNA molecules in this entry.

5.4 Non-standard residues in protein, DNA, RNA chains [i](#)

There are no non-standard protein/DNA/RNA residues in this entry.

5.5 Carbohydrates [i](#)

There are no monosaccharides in this entry.

5.6 Ligand geometry [i](#)

Of 5 ligands modelled in this entry, 1 is monoatomic - leaving 4 for Mogul analysis.

In the following table, the Counts columns list the number of bonds (or angles) for which Mogul statistics could be retrieved, the number of bonds (or angles) that are observed in the model and

the number of bonds (or angles) that are defined in the Chemical Component Dictionary. The Link column lists molecule types, if any, to which the group is linked. The Z score for a bond length (or angle) is the number of standard deviations the observed value is removed from the expected value. A bond length (or angle) with $|Z| > 2$ is considered an outlier worth inspection. RMSZ is the root-mean-square of all Z scores of the bond lengths (or angles).

Mol	Type	Chain	Res	Link	Bond lengths			Bond angles		
					Counts	RMSZ	# Z > 2	Counts	RMSZ	# Z > 2
2	PEG	B	401	-	6,6,6	0.47	0	5,5,5	0.35	0
2	PEG	A	401	-	6,6,6	0.35	0	5,5,5	0.20	0
3	PG4	B	402	-	12,12,12	0.41	0	11,11,11	0.35	0
3	PG4	A	402	-	12,12,12	0.60	0	11,11,11	0.43	0

In the following table, the Chirals column lists the number of chiral outliers, the number of chiral centers analysed, the number of these observed in the model and the number defined in the Chemical Component Dictionary. Similar counts are reported in the Torsion and Rings columns. '-' means no outliers of that kind were identified.

Mol	Type	Chain	Res	Link	Chirals	Torsions	Rings
2	PEG	B	401	-	-	1/4/4/4	-
2	PEG	A	401	-	-	1/4/4/4	-
3	PG4	B	402	-	-	0/10/10/10	-
3	PG4	A	402	-	-	3/10/10/10	-

There are no bond length outliers.

There are no bond angle outliers.

There are no chirality outliers.

All (5) torsion outliers are listed below:

Mol	Chain	Res	Type	Atoms
2	A	401	PEG	O1-C1-C2-O2
2	B	401	PEG	O1-C1-C2-O2
3	A	402	PG4	C1-C2-O2-C3
3	A	402	PG4	O1-C1-C2-O2
3	A	402	PG4	O4-C7-C8-O5

There are no ring outliers.

1 monomer is involved in 2 short contacts:

Mol	Chain	Res	Type	Clashes	Symm-Clashes
2	B	401	PEG	2	0

5.7 Other polymers [i](#)

There are no such residues in this entry.

5.8 Polymer linkage issues [i](#)

There are no chain breaks in this entry.

6 Fit of model and data [i](#)

6.1 Protein, DNA and RNA chains [i](#)

In the following table, the column labelled ‘#RSRZ > 2’ contains the number (and percentage) of RSRZ outliers, followed by percent RSRZ outliers for the chain as percentile scores relative to all X-ray entries and entries of similar resolution. The OWAB column contains the minimum, median, 95th percentile and maximum values of the occupancy-weighted average B-factor per residue. The column labelled ‘Q < 0.9’ lists the number of (and percentage) of residues with an average occupancy less than 0.9.

Mol	Chain	Analysed	<RSRZ>	#RSRZ>2	OWAB(Å ²)	Q<0.9
1	A	363/376 (96%)	0.13	8 (2%) 62 68	10, 16, 32, 64	0
1	B	357/376 (94%)	0.03	2 (0%) 89 91	9, 15, 30, 58	1 (0%)
All	All	720/752 (95%)	0.08	10 (1%) 75 80	9, 15, 32, 64	1 (0%)

All (10) RSRZ outliers are listed below:

Mol	Chain	Res	Type	RSRZ
1	A	115	VAL	3.6
1	B	115	VAL	3.4
1	A	274	PRO	3.1
1	A	48	ALA	2.9
1	A	374	HIS	2.9
1	B	113	GLY	2.8
1	A	99	PRO	2.7
1	A	275	GLY	2.5
1	A	372	HIS	2.2
1	A	113	GLY	2.1

6.2 Non-standard residues in protein, DNA, RNA chains [i](#)

There are no non-standard protein/DNA/RNA residues in this entry.

6.3 Carbohydrates [i](#)

There are no monosaccharides in this entry.

6.4 Ligands

In the following table, the Atoms column lists the number of modelled atoms in the group and the number defined in the chemical component dictionary. The B-factors column lists the minimum, median, 95th percentile and maximum values of B factors of atoms in the group. The column labelled 'Q< 0.9' lists the number of atoms with occupancy less than 0.9.

Mol	Type	Chain	Res	Atoms	RSCC	RSR	B-factors(Å ²)	Q<0.9
2	PEG	B	401	7/7	0.81	0.15	47,50,55,57	0
2	PEG	A	401	7/7	0.89	0.16	29,43,55,55	0
3	PG4	A	402	13/13	0.92	0.11	26,32,52,63	0
3	PG4	B	402	13/13	0.93	0.09	22,31,55,55	0
4	MG	B	403	1/1	0.99	0.06	23,23,23,23	0

6.5 Other polymers

There are no such residues in this entry.