



Full wwPDB EM Validation Report ⓘ

Jun 26, 2025 – 08:51 AM JST

PDB ID : 7YUP / pdb_00007yup
EMDB ID : EMD-34109
Title : MtaLon-Apo for the spiral oligomers of pentamer
Authors : Li, S.; Hsieh, K.; Kuo, C.; Lee, S.; Ho, M.; Wang, C.; Zhang, K.; Chang, C.I.
Deposited on : 2022-08-17
Resolution : 3.70 Å(reported)

This is a Full wwPDB EM Validation Report for a publicly released PDB entry.

We welcome your comments at validation@mail.wwpdb.org

A user guide is available at

<https://www.wwpdb.org/validation/2017/EMValidationReportHelp>

with specific help available everywhere you see the ⓘ symbol.

The types of validation reports are described at

<http://www.wwpdb.org/validation/2017/FAQs#types>.

The following versions of software and data (see [references ⓘ](#)) were used in the production of this report:

EMDB validation analysis : 0.0.1.dev118
MolProbity : 4-5-2 with Phenix2.0rc1
Percentile statistics : 20231227.v01 (using entries in the PDB archive December 27th 2023)
MapQ : 1.9.13
Ideal geometry (proteins) : Engh & Huber (2001)
Ideal geometry (DNA, RNA) : Parkinson et al. (1996)
Validation Pipeline (wwPDB-VP) : 2.44

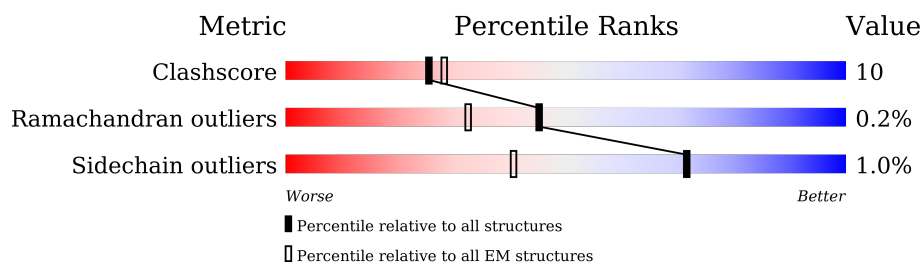
1 Overall quality at a glance

The following experimental techniques were used to determine the structure:

ELECTRON MICROSCOPY

The reported resolution of this entry is 3.70 Å.

Percentile scores (ranging between 0-100) for global validation metrics of the entry are shown in the following graphic. The table shows the number of entries on which the scores are based.



Metric	Whole archive (#Entries)	EM structures (#Entries)
Clashscore	210492	15764
Ramachandran outliers	207382	16835
Sidechain outliers	206894	16415

The table below summarises the geometric issues observed across the polymeric chains and their fit to the map. The red, orange, yellow and green segments of the bar indicate the fraction of residues that contain outliers for ≥ 3 , 2, 1 and 0 types of geometric quality criteria respectively. A grey segment represents the fraction of residues that are not modelled. The numeric value for each fraction is indicated below the corresponding segment, with a dot representing fractions $\leq 5\%$. The upper red bar (where present) indicates the fraction of residues that have poor fit to the EM map (all-atom inclusion $< 40\%$). The numeric value is given above the bar.

Mol	Chain	Length	Quality of chain
1	A	793	<div> <div>28%</div> <div>70%</div> <div>27%</div> <div>..</div> </div>
1	B	793	<div> <div>30%</div> <div>72%</div> <div>24%</div> <div>..</div> </div>
1	C	793	<div> <div>27%</div> <div>70%</div> <div>27%</div> <div>..</div> </div>
1	D	793	<div> <div>29%</div> <div>74%</div> <div>23%</div> <div>..</div> </div>
1	E	793	<div> <div>33%</div> <div>70%</div> <div>27%</div> <div>.</div> </div>

2 Entry composition

There is only 1 type of molecule in this entry. The entry contains 30375 atoms, of which 0 are hydrogens and 0 are deuteriums.

In the tables below, the AltConf column contains the number of residues with at least one atom in alternate conformation and the Trace column contains the number of residues modelled with at most 2 atoms.

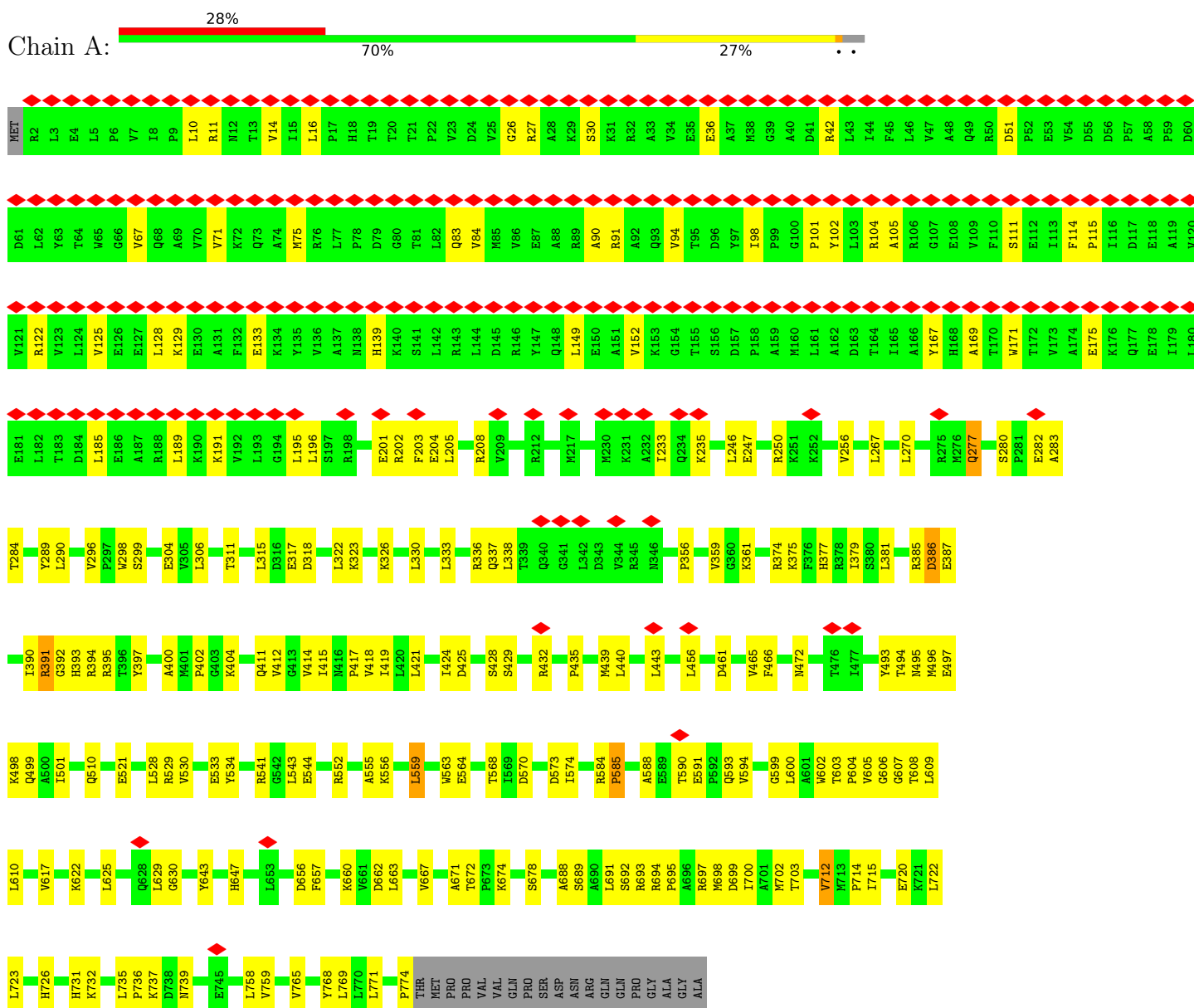
- Molecule 1 is a protein called Lon protease.

Mol	Chain	Residues	Atoms					AltConf	Trace
1	A	773	Total	C	N	O	S	0	0
			6075	3838	1067	1149	21		
1	B	773	Total	C	N	O	S	0	0
			6075	3838	1067	1149	21		
1	C	773	Total	C	N	O	S	0	0
			6075	3838	1067	1149	21		
1	D	773	Total	C	N	O	S	0	0
			6075	3838	1067	1149	21		
1	E	773	Total	C	N	O	S	0	0
			6075	3838	1067	1149	21		

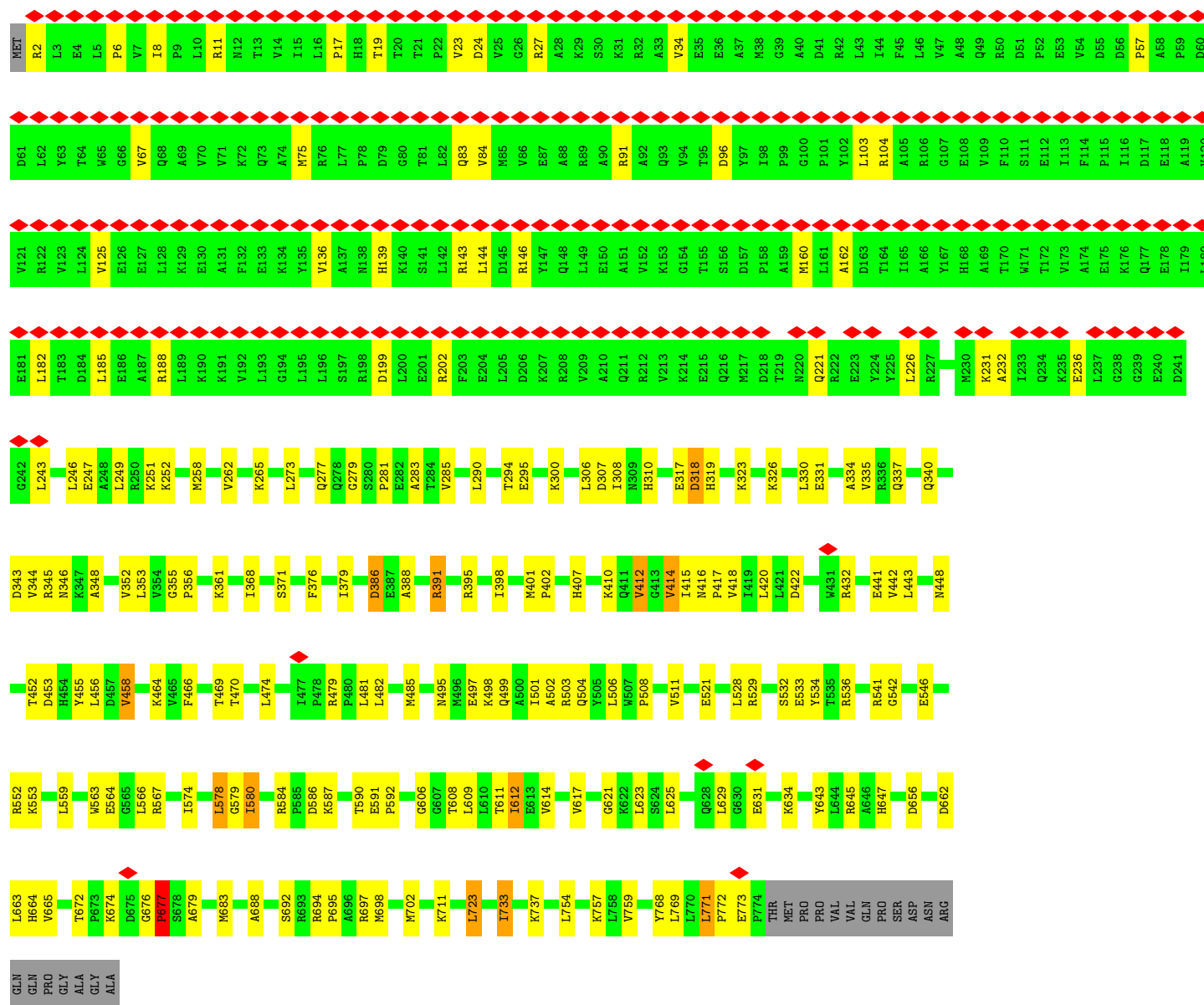
3 Residue-property plots

These plots are drawn for all protein, RNA, DNA and oligosaccharide chains in the entry. The first graphic for a chain summarises the proportions of the various outlier classes displayed in the second graphic. The second graphic shows the sequence view annotated by issues in geometry and atom inclusion in map density. Residues are color-coded according to the number of geometric quality criteria for which they contain at least one outlier: green = 0, yellow = 1, orange = 2 and red = 3 or more. A red diamond above a residue indicates a poor fit to the EM map for this residue (all-atom inclusion < 40%). Stretches of 2 or more consecutive residues without any outlier are shown as a green connector. Residues present in the sample, but not in the model, are shown in grey.

- Molecule 1: Lon protease

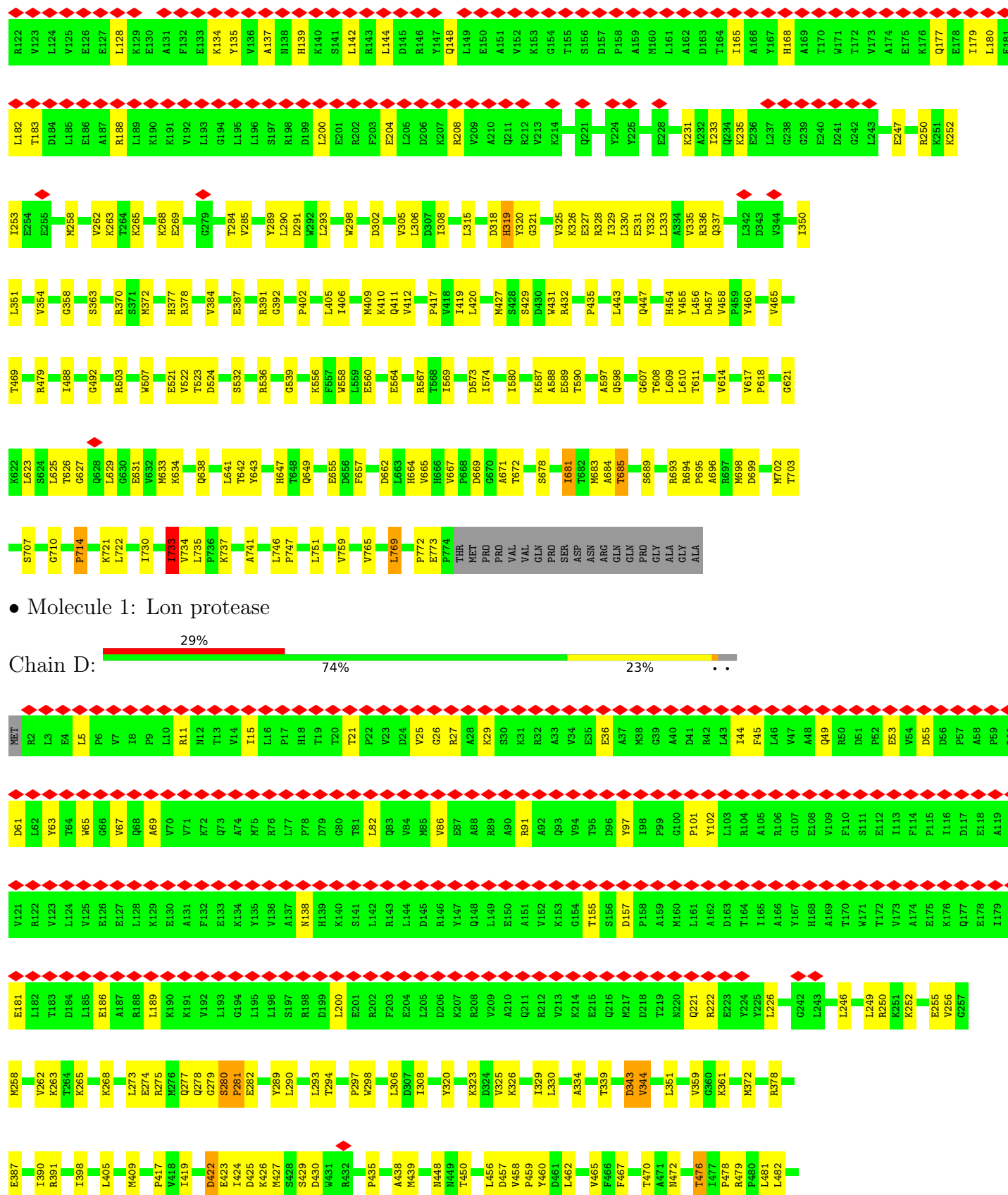


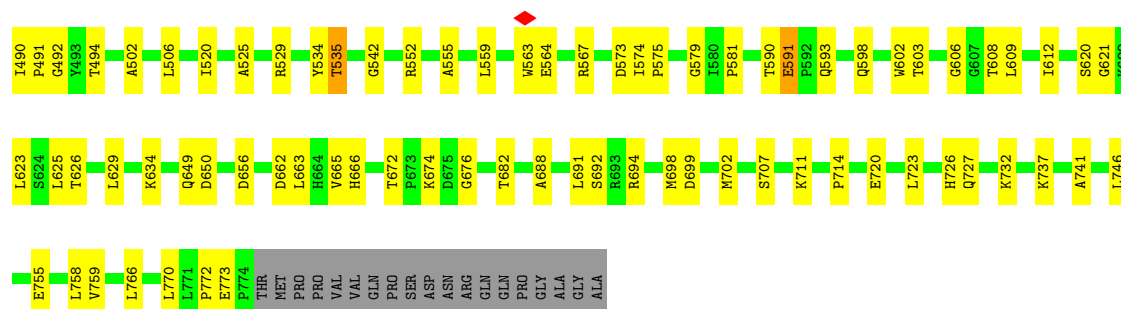
- Molecule 1: Lon protease



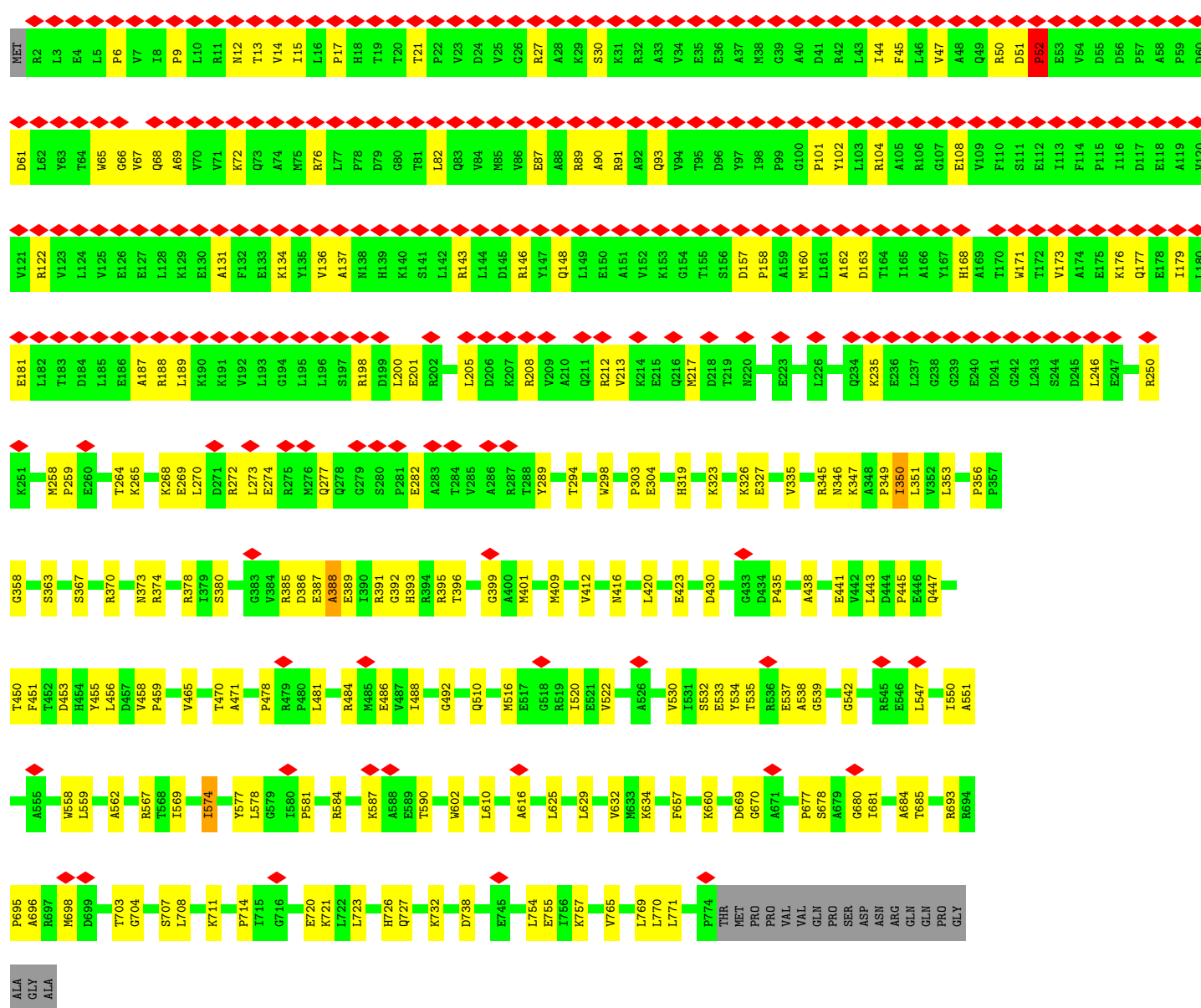
• Molecule 1: Lon protease







- Molecule 1: Lon protease



4 Experimental information

Property	Value	Source
EM reconstruction method	SINGLE PARTICLE	Depositor
Imposed symmetry	POINT, C1	Depositor
Number of particles used	285591	Depositor
Resolution determination method	FSC 0.143 CUT-OFF	Depositor
CTF correction method	NONE	Depositor
Microscope	FEI TITAN KRIOS	Depositor
Voltage (kV)	300	Depositor
Electron dose ($e^-/\text{\AA}^2$)	48	Depositor
Minimum defocus (nm)	1000	Depositor
Maximum defocus (nm)	2500	Depositor
Magnification	Not provided	
Image detector	FEI FALCON IV (4k x 4k)	Depositor
Maximum map value	2.061	Depositor
Minimum map value	-1.237	Depositor
Average map value	0.001	Depositor
Map value standard deviation	0.062	Depositor
Recommended contour level	0.196	Depositor
Map size (\AA)	275.52, 275.52, 275.52	wwPDB
Map dimensions	336, 336, 336	wwPDB
Map angles ($^\circ$)	90.0, 90.0, 90.0	wwPDB
Pixel spacing (\AA)	0.82, 0.82, 0.82	Depositor

5 Model quality [i](#)

5.1 Standard geometry [i](#)

The Z score for a bond length (or angle) is the number of standard deviations the observed value is removed from the expected value. A bond length (or angle) with $|Z| > 5$ is considered an outlier worth inspection. RMSZ is the root-mean-square of all Z scores of the bond lengths (or angles).

Mol	Chain	Bond lengths		Bond angles	
		RMSZ	# Z >5	RMSZ	# Z >5
1	A	0.50	2/6184 (0.0%)	0.91	10/8380 (0.1%)
1	B	0.74	1/6184 (0.0%)	0.99	18/8380 (0.2%)
1	C	0.74	0/6184	1.00	12/8380 (0.1%)
1	D	0.68	0/6184	0.92	7/8380 (0.1%)
1	E	0.39	1/6184 (0.0%)	0.78	5/8380 (0.1%)
All	All	0.62	4/30920 (0.0%)	0.92	52/41900 (0.1%)

Chiral center outliers are detected by calculating the chiral volume of a chiral center and verifying if the center is modelled as a planar moiety or with the opposite hand. A planarity outlier is detected by checking planarity of atoms in a peptide group, atoms in a mainchain group or atoms of a sidechain that are expected to be planar.

Mol	Chain	#Chirality outliers	#Planarity outliers
1	A	0	10
1	B	0	7
1	C	0	7
1	D	0	11
1	E	0	2
All	All	0	37

All (4) bond length outliers are listed below:

Mol	Chain	Res	Type	Atoms	Z	Observed(Å)	Ideal(Å)
1	B	469	THR	CA-CB	-6.13	1.43	1.53
1	A	574	ILE	C-N	5.71	1.41	1.34
1	E	574	ILE	C-N	5.66	1.40	1.34
1	A	712	VAL	C-N	-5.14	1.25	1.33

All (52) bond angle outliers are listed below:

Mol	Chain	Res	Type	Atoms	Z	Observed(°)	Ideal(°)
1	A	712	VAL	CA-C-N	11.33	139.16	121.03
1	A	712	VAL	C-N-CA	11.33	139.16	121.03

Continued on next page...

Continued from previous page...

Mol	Chain	Res	Type	Atoms	Z	Observed(°)	Ideal(°)
1	A	318	ASP	N-CA-C	-8.82	104.57	114.62
1	C	607	GLY	N-CA-C	7.58	122.41	112.25
1	A	657	PHE	N-CA-C	-7.06	103.84	113.30
1	B	503	ARG	CA-C-N	-7.05	110.55	122.11
1	B	503	ARG	C-N-CA	-7.05	110.55	122.11
1	D	343	ASP	CA-C-N	7.01	129.97	122.11
1	D	343	ASP	C-N-CA	7.01	129.97	122.11
1	C	735	LEU	N-CA-C	6.92	114.23	108.07
1	A	246	LEU	N-CA-C	-6.91	105.00	113.50
1	C	573	ASP	N-CA-C	-6.80	103.57	112.41
1	E	399	GLY	N-CA-C	-6.77	105.84	114.37
1	B	318	ASP	CA-C-N	6.74	134.42	121.54
1	B	318	ASP	C-N-CA	6.74	134.42	121.54
1	D	344	VAL	N-CA-CB	6.61	121.86	110.96
1	B	345	ARG	CA-C-N	-6.58	113.61	121.90
1	B	345	ARG	C-N-CA	-6.58	113.61	121.90
1	C	678	SER	N-CA-C	-6.53	103.37	112.25
1	E	319	HIS	N-CA-C	-6.41	100.07	109.18
1	B	279	GLY	N-CA-C	-6.33	105.33	115.08
1	A	605	VAL	CA-C-N	6.29	133.73	121.41
1	A	605	VAL	C-N-CA	6.29	133.73	121.41
1	B	504	GLN	CA-C-N	-6.13	112.60	121.98
1	B	504	GLN	C-N-CA	-6.13	112.60	121.98
1	A	421	LEU	N-CA-C	-5.91	100.56	109.95
1	D	714	PRO	N-CA-C	5.84	120.17	111.41
1	B	353	LEU	CA-C-N	-5.72	115.49	123.10
1	B	353	LEU	C-N-CA	-5.72	115.49	123.10
1	E	395	ARG	CA-C-N	5.56	135.94	125.66
1	E	395	ARG	C-N-CA	5.56	135.94	125.66
1	C	733	ILE	CG1-CB-CG2	-5.53	94.12	110.70
1	B	733	ILE	CG1-CB-CG2	-5.50	94.19	110.70
1	C	492	GLY	N-CA-C	5.49	118.37	112.33
1	D	351	LEU	N-CA-C	5.48	117.32	110.91
1	D	281	PRO	CA-C-N	5.37	128.21	120.38
1	D	281	PRO	C-N-CA	5.37	128.21	120.38
1	B	771	LEU	CA-C-N	-5.25	114.31	119.99
1	B	771	LEU	C-N-CA	-5.25	114.31	119.99
1	C	447	GLN	N-CA-C	-5.25	106.89	113.72
1	C	714	PRO	CB-CA-C	-5.25	102.90	111.56
1	C	769	LEU	CA-CB-CG	-5.21	98.07	116.30
1	C	610	LEU	CB-CA-C	-5.14	104.96	111.70
1	C	672	THR	N-CA-C	-5.14	98.45	109.81

Continued on next page...

Continued from previous page...

Mol	Chain	Res	Type	Atoms	Z	Observed(°)	Ideal(°)
1	B	391	ARG	CB-CG-CD	-5.09	99.59	111.30
1	B	606	GLY	CA-C-N	-5.09	111.44	121.41
1	B	606	GLY	C-N-CA	-5.09	111.44	121.41
1	C	714	PRO	N-CA-C	5.08	122.93	112.47
1	A	391	ARG	CA-C-N	-5.06	117.26	122.27
1	A	391	ARG	C-N-CA	-5.06	117.26	122.27
1	E	388	ALA	N-CA-C	-5.05	108.38	114.75
1	B	723	LEU	CA-CB-CG	-5.01	98.76	116.30

There are no chirality outliers.

All (37) planarity outliers are listed below:

Mol	Chain	Res	Type	Group
1	A	277	GLN	Peptide
1	A	296	VAL	Peptide
1	A	317	GLU	Peptide
1	A	336	ARG	Peptide
1	A	419	ILE	Peptide
1	A	51	ASP	Peptide
1	A	585	PRO	Peptide
1	A	663	LEU	Peptide
1	A	699	ASP	Peptide
1	A	771	LEU	Peptide
1	B	317	GLU	Peptide
1	B	343	ASP	Peptide
1	B	511	VAL	Peptide
1	B	586	ASP	Peptide
1	B	656	ASP	Peptide
1	B	677	PRO	Peptide
1	B	773	GLU	Peptide
1	C	302	ASP	Peptide
1	C	319	HIS	Peptide
1	C	51	ASP	Peptide
1	C	523	THR	Peptide
1	C	589	GLU	Peptide
1	C	707	SER	Peptide
1	C	747	PRO	Peptide
1	D	278	GLN	Peptide
1	D	279	GLY	Peptide
1	D	280	SER	Peptide
1	D	320	TYR	Peptide
1	D	339	THR	Peptide

Continued on next page...

Continued from previous page...

Mol	Chain	Res	Type	Group
1	D	343	ASP	Peptide
1	D	398	ILE	Peptide
1	D	422	ASP	Peptide
1	D	430	ASP	Peptide
1	D	590	THR	Peptide
1	D	707	SER	Peptide
1	E	51	ASP	Peptide
1	E	52	PRO	Peptide

5.2 Too-close contacts ⓘ

In the following table, the Non-H and H(model) columns list the number of non-hydrogen atoms and hydrogen atoms in the chain respectively. The H(added) column lists the number of hydrogen atoms added and optimized by MolProbity. The Clashes column lists the number of clashes within the asymmetric unit, whereas Symm-Clashes lists symmetry-related clashes.

Mol	Chain	Non-H	H(model)	H(added)	Clashes	Symm-Clashes
1	A	6075	0	6188	135	0
1	B	6075	0	6188	123	0
1	C	6075	0	6188	145	0
1	D	6075	0	6188	113	0
1	E	6075	0	6188	124	0
All	All	30375	0	30940	618	0

The all-atom clashscore is defined as the number of clashes found per 1000 atoms (including hydrogen atoms). The all-atom clashscore for this structure is 10.

All (618) close contacts within the same asymmetric unit are listed below, sorted by their clash magnitude.

Atom-1	Atom-2	Interatomic distance (Å)	Clash overlap (Å)
1:A:555:ALA:O	1:A:559:LEU:HB2	1.66	0.94
1:A:688:ALA:O	1:A:692:SER:HB3	1.75	0.86
1:D:502:ALA:HA	1:D:506:LEU:HB2	1.64	0.78
1:D:555:ALA:O	1:D:559:LEU:HB2	1.85	0.77
1:E:387:GLU:HB3	1:E:391:ARG:HB2	1.69	0.74
1:D:694:ARG:HB3	1:D:772:PRO:HG2	1.70	0.72
1:D:265:LYS:HZ3	1:D:457:ASP:HB2	1.57	0.70
1:E:269:GLU:HG3	1:E:289:TYR:HD2	1.56	0.69
1:D:529:ARG:HD3	1:D:574:ILE:HD12	1.75	0.69
1:C:625:LEU:HB3	1:C:629:LEU:HD12	1.74	0.69

Continued on next page...

Continued from previous page...

Atom-1	Atom-2	Interatomic distance (Å)	Clash overlap (Å)
1:E:562:ALA:HA	1:E:567:ARG:HH12	1.58	0.69
1:C:319:HIS:HE1	1:C:363:SER:HB3	1.58	0.69
1:E:47:VAL:HG22	1:E:66:GLY:HA3	1.74	0.68
1:A:299:SER:HA	1:A:415:ILE:HD13	1.75	0.67
1:A:737:LYS:HG2	1:A:758:LEU:HB3	1.78	0.66
1:C:94:VAL:HA	1:C:106:ARG:HB2	1.78	0.65
1:C:321:GLY:HA3	1:C:326:LYS:HE2	1.79	0.65
1:E:265:LYS:HE2	1:E:458:VAL:HB	1.77	0.65
1:B:318:ASP:OD1	1:B:318:ASP:N	2.28	0.65
1:A:379:ILE:HD11	1:A:404:LYS:HD2	1.77	0.65
1:E:538:ALA:HA	1:E:727:GLN:HE22	1.62	0.65
1:A:720:GLU:HG3	1:A:723:LEU:HD12	1.79	0.64
1:C:262:VAL:HG22	1:C:458:VAL:HG11	1.78	0.64
1:E:345:ARG:HH11	1:E:347:LYS:HD3	1.63	0.64
1:C:392:GLY:HA3	1:C:455:TYR:H	1.62	0.63
1:A:625:LEU:HD23	1:A:629:LEU:HD12	1.80	0.63
1:C:308:ILE:HD11	1:C:330:LEU:HB3	1.81	0.63
1:C:318:ASP:HB2	1:C:370:ARG:HH12	1.64	0.63
1:D:525:ALA:O	1:D:529:ARG:HB2	1.98	0.63
1:E:520:ILE:HA	1:E:567:ARG:HB2	1.79	0.63
1:A:510:GLN:HE22	1:A:544:GLU:HG3	1.64	0.63
1:D:702:MET:SD	1:D:702:MET:N	2.71	0.63
1:A:323:LYS:HA	1:A:326:LYS:HD3	1.81	0.63
1:C:617:VAL:HG21	1:C:664:HIS:HD2	1.64	0.62
1:C:590:THR:OG1	1:C:698:MET:SD	2.55	0.62
1:A:559:LEU:HG	1:B:334:ALA:HB1	1.81	0.62
1:B:578:LEU:HD23	1:B:579:GLY:H	1.65	0.62
1:D:491:PRO:HB3	1:D:720:GLU:HG2	1.82	0.62
1:B:391:ARG:NE	1:B:452:THR:O	2.31	0.62
1:B:442:VAL:O	1:B:448:ASN:ND2	2.29	0.62
1:B:498:LYS:HA	1:B:501:ILE:HD12	1.82	0.61
1:C:702:MET:HB2	1:C:734:VAL:HB	1.82	0.61
1:D:155:THR:HG22	1:D:157:ASP:H	1.66	0.61
1:B:300:LYS:HB2	1:B:414:VAL:HA	1.83	0.61
1:A:499:GLN:HE21	1:A:528:LEU:HB2	1.65	0.61
1:E:326:LYS:HG3	1:E:327:GLU:HG3	1.83	0.61
1:B:319:HIS:HE1	1:B:541:ARG:HH12	1.49	0.61
1:A:496:MET:SD	1:A:496:MET:N	2.74	0.60
1:E:351:LEU:HD22	1:E:488:ILE:HD11	1.83	0.60
1:B:221:GLN:HB2	1:E:198:ARG:HH22	1.66	0.60
1:B:323:LYS:HD2	1:B:326:LYS:HD3	1.83	0.60

Continued on next page...

Continued from previous page...

Atom-1	Atom-2	Interatomic distance (Å)	Clash overlap (Å)
1:A:418:VAL:HG22	1:A:466:PHE:HB3	1.84	0.60
1:C:333:LEU:HA	1:C:336:ARG:HB2	1.83	0.60
1:C:522:VAL:HG22	1:C:569:ILE:HB	1.82	0.60
1:C:694:ARG:HG3	1:C:773:GLU:HG3	1.82	0.60
1:E:714:PRO:HB3	1:E:738:ASP:HB2	1.84	0.60
1:A:552:ARG:HG2	1:B:335:VAL:HG11	1.83	0.60
1:C:694:ARG:NH1	1:C:772:PRO:O	2.33	0.60
1:D:535:THR:HG21	1:D:542:GLY:HA3	1.83	0.60
1:D:732:LYS:HG3	1:D:755:GLU:HB3	1.83	0.60
1:B:308:ILE:HD11	1:B:330:LEU:HB3	1.82	0.60
1:C:479:ARG:O	1:C:479:ARG:NH2	2.34	0.60
1:A:75:MET:HB3	1:A:83:GLN:HB2	1.84	0.59
1:A:731:HIS:HB2	1:A:732:LYS:HD2	1.84	0.59
1:C:694:ARG:HE	1:C:773:GLU:HA	1.66	0.59
1:B:401:MET:HB2	1:C:432:ARG:HE	1.67	0.59
1:C:315:LEU:O	1:C:326:LYS:NZ	2.28	0.59
1:C:503:ARG:NH2	1:C:524:ASP:OD2	2.35	0.59
1:A:697:ARG:NH2	1:A:768:TYR:O	2.35	0.59
1:D:308:ILE:HD12	1:D:334:ALA:HB2	1.84	0.59
1:D:608:THR:OG1	1:D:609:LEU:N	2.32	0.59
1:B:443:LEU:HD22	1:B:481:LEU:HD22	1.84	0.59
1:C:580:ILE:HG12	1:D:741:ALA:HB1	1.84	0.59
1:D:625:LEU:HB3	1:D:629:LEU:HB2	1.84	0.59
1:D:649:GLN:NE2	1:D:650:ASP:OD1	2.36	0.59
1:E:50:ARG:HG2	1:E:61:ASP:HA	1.84	0.59
1:B:412:VAL:HG21	1:B:417:PRO:HG3	1.84	0.58
1:B:694:ARG:HD2	1:B:772:PRO:HG2	1.84	0.58
1:C:417:PRO:HD2	1:C:465:VAL:HG22	1.85	0.58
1:D:387:GLU:OE1	1:D:391:ARG:NH2	2.36	0.58
1:A:472:ASN:HB3	1:A:604:PRO:HB2	1.85	0.58
1:B:262:VAL:HA	1:B:265:LYS:HE2	1.86	0.58
1:A:361:LYS:NZ	1:A:472:ASN:OD1	2.36	0.58
1:A:417:PRO:HD2	1:A:465:VAL:HG22	1.85	0.58
1:D:663:LEU:HD21	1:D:691:LEU:HD21	1.86	0.58
1:E:574:ILE:HD12	1:E:577:TYR:HB2	1.84	0.58
1:A:11:ARG:HH22	1:A:26:GLY:H	1.51	0.57
1:A:235:LYS:HE2	1:E:212:ARG:HD2	1.86	0.57
1:C:417:PRO:HG2	1:C:419:ILE:HG13	1.86	0.57
1:C:695:PRO:HG2	1:C:772:PRO:HG2	1.85	0.57
1:D:603:THR:OG1	1:D:606:GLY:O	2.22	0.57
1:B:57:PRO:HB2	1:B:103:LEU:HD11	1.86	0.57

Continued on next page...

Continued from previous page...

Atom-1	Atom-2	Interatomic distance (Å)	Clash overlap (Å)
1:C:77:LEU:HB2	1:C:83:GLN:HB3	1.87	0.57
1:C:358:GLY:HA3	1:C:539:GLY:HA3	1.87	0.57
1:E:14:VAL:HG21	1:E:177:GLN:HB2	1.87	0.57
1:E:453:ASP:H	1:E:456:LEU:HB2	1.70	0.57
1:A:204:GLU:OE2	1:A:208:ARG:NH1	2.37	0.57
1:B:388:ALA:HB2	1:B:432:ARG:HE	1.70	0.57
1:B:402:PRO:O	1:C:432:ARG:NH2	2.38	0.57
1:B:733:ILE:HD11	1:B:754:LEU:HD22	1.86	0.57
1:C:42:ARG:NH1	1:C:71:VAL:O	2.38	0.57
1:D:450:THR:HA	1:D:459:PRO:HB3	1.87	0.57
1:E:393:HIS:HB3	1:E:401:MET:H	1.70	0.57
1:B:319:HIS:CE1	1:B:541:ARG:HH12	2.23	0.57
1:C:621:GLY:N	1:C:662:ASP:OD1	2.33	0.57
1:A:694:ARG:HG3	1:A:774:PRO:HG2	1.87	0.57
1:B:136:VAL:HA	1:B:139:HIS:HD2	1.69	0.57
1:C:406:ILE:O	1:C:410:LYS:HB2	2.05	0.57
1:D:138:ASN:HD21	1:D:200:LEU:HD12	1.70	0.57
1:A:608:THR:OG1	1:A:609:LEU:N	2.38	0.56
1:A:737:LYS:N	1:A:759:VAL:O	2.36	0.56
1:B:262:VAL:HG23	1:B:458:VAL:HG11	1.87	0.56
1:C:72:LYS:HD3	1:C:85:MET:HG3	1.85	0.56
1:D:258:MET:HE3	1:D:263:LYS:HD3	1.87	0.56
1:D:417:PRO:HD2	1:D:465:VAL:HG22	1.88	0.56
1:C:703:THR:OG1	1:C:721:LYS:NZ	2.29	0.56
1:B:11:ARG:NH1	1:B:24:ASP:O	2.36	0.56
1:D:682:THR:HA	1:D:702:MET:HE2	1.86	0.56
1:E:720:GLU:HA	1:E:723:LEU:HD12	1.88	0.56
1:D:44:ILE:HB	1:D:69:ALA:HB3	1.88	0.56
1:A:599:GLY:O	1:A:610:LEU:N	2.38	0.56
1:C:378:ARG:HG3	1:C:420:LEU:HB3	1.86	0.56
1:C:587:LYS:O	1:C:590:THR:OG1	2.24	0.56
1:E:246:LEU:HD21	1:E:274:GLU:HA	1.88	0.56
1:E:269:GLU:OE1	1:E:272:ARG:NH2	2.37	0.56
1:A:387:GLU:OE1	1:A:432:ARG:NH1	2.38	0.56
1:A:563:TRP:HD1	1:A:564:GLU:HG3	1.70	0.56
1:C:722:LEU:HD21	1:C:733:ILE:HG21	1.88	0.56
1:A:315:LEU:O	1:A:323:LYS:NZ	2.39	0.56
1:B:563:TRP:HD1	1:B:564:GLU:HG3	1.71	0.56
1:B:608:THR:OG1	1:B:609:LEU:N	2.38	0.56
1:B:479:ARG:HD2	1:B:482:LEU:HD12	1.88	0.56
1:B:614:VAL:HG13	1:B:665:VAL:HG22	1.88	0.56

Continued on next page...

Continued from previous page...

Atom-1	Atom-2	Interatomic distance (Å)	Clash overlap (Å)
1:B:455:TYR:HD2	1:B:456:LEU:HD12	1.71	0.55
1:C:556:LYS:NZ	1:C:560:GLU:OE2	2.39	0.55
1:D:423:GLU:OE2	1:D:426:LYS:NZ	2.37	0.55
1:E:346:ASN:H	1:E:445:PRO:HB3	1.72	0.55
1:C:182:LEU:O	1:C:188:ARG:NH2	2.39	0.55
1:D:424:ILE:HD11	1:D:439:MET:HE2	1.88	0.55
1:E:6:PRO:HA	1:E:104:ARG:HA	1.88	0.55
1:E:12:ASN:HD22	1:E:52:PRO:HA	1.71	0.55
1:A:306:LEU:HA	1:A:337:GLN:HE21	1.72	0.55
1:C:598:GLN:HB3	1:C:611:THR:HG22	1.87	0.55
1:E:349:PRO:HB2	1:E:486:GLU:HB2	1.89	0.55
1:A:201:GLU:HG3	1:D:222:ARG:HD2	1.89	0.55
1:D:674:LYS:NZ	1:D:720:GLU:OE1	2.40	0.55
1:E:15:ILE:HD12	1:E:21:THR:HG21	1.89	0.55
1:D:49:GLN:HG3	1:D:61:ASP:HB3	1.87	0.54
1:D:591:GLU:O	1:D:593:GLN:NE2	2.40	0.54
1:A:602:TRP:HD1	1:A:674:LYS:HB2	1.72	0.54
1:D:737:LYS:N	1:D:759:VAL:O	2.40	0.54
1:E:537:GLU:HG3	1:E:539:GLY:H	1.72	0.54
1:C:35:GLU:HG2	1:C:76:ARG:HH12	1.72	0.54
1:A:461:ASP:OD1	1:A:461:ASP:N	2.36	0.54
1:A:691:LEU:O	1:A:693:ARG:NH2	2.36	0.54
1:A:418:VAL:HG13	1:A:466:PHE:HD2	1.72	0.54
1:C:623:LEU:HD23	1:C:634:LYS:HG3	1.88	0.54
1:D:563:TRP:HD1	1:D:564:GLU:HG3	1.73	0.54
1:E:264:THR:HG22	1:E:268:LYS:HE2	1.89	0.54
1:A:277:GLN:HA	1:A:283:ALA:HB3	1.90	0.54
1:A:697:ARG:HH21	1:A:769:LEU:HA	1.73	0.54
1:C:306:LEU:O	1:C:337:GLN:NE2	2.27	0.54
1:A:90:ALA:HB1	1:A:111:SER:HB3	1.90	0.53
1:C:252:LYS:NZ	1:C:291:ASP:OD1	2.41	0.53
1:C:284:THR:OG1	1:C:285:VAL:N	2.39	0.53
1:E:272:ARG:HH11	1:E:282:GLU:HG2	1.73	0.53
1:B:355:GLY:O	1:B:361:LYS:NZ	2.28	0.53
1:D:429:SER:HB2	1:D:435:PRO:HD2	1.90	0.53
1:E:441:GLU:HG3	1:E:447:GLN:HE21	1.72	0.53
1:A:377:HIS:NE2	1:A:411:GLN:OE1	2.41	0.53
1:D:688:ALA:O	1:D:692:SER:OG	2.26	0.53
1:C:333:LEU:O	1:C:337:GLN:N	2.41	0.53
1:E:388:ALA:HB1	1:E:401:MET:HB2	1.91	0.53
1:B:376:PHE:HZ	1:B:420:LEU:HD22	1.74	0.53

Continued on next page...

Continued from previous page...

Atom-1	Atom-2	Interatomic distance (Å)	Clash overlap (Å)
1:D:672:THR:HB	1:D:676:GLY:H	1.74	0.53
1:A:191:LYS:HE3	1:A:195:LEU:HD11	1.91	0.53
1:C:377:HIS:NE2	1:C:411:GLN:OE1	2.42	0.53
1:D:378:ARG:NH2	1:D:422:ASP:OD2	2.42	0.53
1:E:157:ASP:HB3	1:E:160:MET:HB3	1.90	0.53
1:A:590:THR:H	1:A:698:MET:HB2	1.73	0.53
1:C:377:HIS:HE2	1:C:411:GLN:HB2	1.73	0.53
1:A:114:PHE:HD1	1:A:185:LEU:HB2	1.74	0.53
1:A:133:GLU:HG2	1:A:149:LEU:HD21	1.90	0.53
1:D:63:TYR:O	1:D:97:TYR:OH	2.23	0.53
1:A:10:LEU:HD13	1:A:14:VAL:HA	1.89	0.52
1:C:38:MET:HG3	1:C:44:ILE:HD11	1.90	0.52
1:D:67:VAL:HA	1:D:91:ARG:HA	1.91	0.52
1:E:416:ASN:HA	1:E:465:VAL:HG22	1.90	0.52
1:E:681:ILE:HB	1:E:765:VAL:HG21	1.90	0.52
1:C:638:GLN:O	1:C:642:THR:OG1	2.24	0.52
1:D:246:LEU:HB3	1:D:250:ARG:HH11	1.73	0.52
1:D:492:GLY:HA3	1:D:727:GLN:HE21	1.75	0.52
1:C:265:LYS:NZ	1:C:289:TYR:OH	2.35	0.52
1:E:350:ILE:HG12	1:E:443:LEU:HD22	1.91	0.52
1:E:574:ILE:O	1:E:578:LEU:N	2.42	0.52
1:B:495:ASN:O	1:B:498:LYS:N	2.42	0.52
1:C:58:ALA:HB3	1:C:61:ASP:HB2	1.91	0.52
1:C:649:GLN:NE2	1:C:655:GLU:OE2	2.41	0.52
1:C:135:TYR:HA	1:C:200:LEU:HD21	1.91	0.52
1:C:689:SER:O	1:C:693:ARG:N	2.43	0.52
1:A:428:SER:OG	1:A:429:SER:N	2.43	0.52
1:A:600:LEU:HB2	1:A:703:THR:HB	1.92	0.52
1:C:98:ILE:HD12	1:C:104:ARG:HG3	1.90	0.52
1:C:608:THR:OG1	1:C:609:LEU:N	2.41	0.52
1:E:68:GLN:OE1	1:E:89:ARG:NH1	2.42	0.52
1:E:625:LEU:HD22	1:E:634:LYS:HG2	1.92	0.52
1:A:42:ARG:HE	1:A:71:VAL:HB	1.74	0.52
1:C:67:VAL:HB	1:C:180:LEU:HD11	1.92	0.52
1:D:280:SER:O	1:D:282:GLU:N	2.42	0.52
1:E:616:ALA:HB3	1:E:693:ARG:HH11	1.74	0.52
1:A:712:VAL:HG12	1:A:736:PRO:HG3	1.92	0.52
1:E:385:ARG:O	1:E:430:ASP:N	2.41	0.52
1:A:521:GLU:HB2	1:A:568:THR:HA	1.91	0.51
1:B:672:THR:HB	1:B:674:LYS:HB3	1.91	0.51
1:E:685:THR:HG21	1:E:769:LEU:HB3	1.93	0.51

Continued on next page...

Continued from previous page...

Atom-1	Atom-2	Interatomic distance (Å)	Clash overlap (Å)
1:A:356:PRO:HB2	1:A:359:VAL:HB	1.93	0.51
1:C:269:GLU:HB2	1:C:290:LEU:HD13	1.92	0.51
1:C:587:LYS:HB2	1:C:730:ILE:HD11	1.93	0.51
1:D:265:LYS:NZ	1:D:289:TYR:OH	2.38	0.51
1:E:44:ILE:HB	1:E:69:ALA:HB3	1.91	0.51
1:E:696:ALA:HA	1:E:770:LEU:HA	1.92	0.51
1:B:285:VAL:HG22	1:B:395:ARG:HG2	1.91	0.51
1:A:67:VAL:HA	1:A:91:ARG:HA	1.92	0.51
1:B:265:LYS:NZ	1:B:456:LEU:O	2.44	0.51
1:B:277:GLN:HG3	1:B:283:ALA:HB1	1.92	0.51
1:B:499:GLN:HE21	1:B:528:LEU:HD13	1.74	0.51
1:C:643:TYR:O	1:C:647:HIS:ND1	2.31	0.51
1:E:409:MET:HA	1:E:412:VAL:HG12	1.92	0.51
1:C:289:TYR:HE1	1:C:456:LEU:HA	1.76	0.51
1:E:374:ARG:NH1	1:E:416:ASN:O	2.44	0.51
1:E:590:THR:HB	1:E:698:MET:HA	1.92	0.51
1:D:575:PRO:HA	1:D:579:GLY:H	1.75	0.51
1:A:584:ARG:HH11	1:A:588:ALA:HB3	1.76	0.51
1:E:91:ARG:NH2	1:E:163:ASP:OD2	2.43	0.50
1:A:440:LEU:HD12	1:A:443:LEU:HD23	1.93	0.50
1:D:308:ILE:HD11	1:D:330:LEU:HB3	1.92	0.50
1:B:199:ASP:OD1	1:B:202:ARG:NH1	2.44	0.50
1:B:672:THR:OG1	1:B:676:GLY:O	2.22	0.50
1:C:409:MET:HG3	1:C:460:TYR:HE2	1.76	0.50
1:A:608:THR:HG1	1:A:609:LEU:N	2.10	0.50
1:C:737:LYS:N	1:C:759:VAL:O	2.43	0.50
1:E:532:SER:OG	1:E:533:GLU:N	2.43	0.50
1:D:297:PRO:O	1:D:460:TYR:OH	2.28	0.50
1:E:392:GLY:HA3	1:E:455:TYR:H	1.77	0.50
1:C:623:LEU:O	1:C:634:LYS:NZ	2.44	0.50
1:A:494:THR:H	1:A:497:GLU:HB2	1.77	0.50
1:B:8:ILE:HG12	1:B:34:VAL:HG22	1.93	0.50
1:B:482:LEU:HD22	1:B:485:MET:HE2	1.94	0.50
1:E:235:LYS:HZ1	1:E:277:GLN:H	1.60	0.50
1:B:631:GLU:HA	1:B:634:LYS:HB2	1.94	0.50
1:E:72:LYS:NZ	1:E:87:GLU:OE1	2.42	0.50
1:E:547:LEU:HD23	1:E:550:ILE:HD12	1.94	0.50
1:E:632:VAL:HB	1:E:677:PRO:HD3	1.94	0.50
1:A:494:THR:O	1:A:498:LYS:N	2.39	0.49
1:B:91:ARG:NH1	1:B:182:LEU:O	2.45	0.49
1:B:185:LEU:HD22	1:B:188:ARG:HH21	1.76	0.49

Continued on next page...

Continued from previous page...

Atom-1	Atom-2	Interatomic distance (Å)	Clash overlap (Å)
1:C:35:GLU:O	1:C:39:GLY:N	2.38	0.49
1:C:564:GLU:H	1:C:567:ARG:HH11	1.58	0.49
1:D:25:VAL:HB	1:D:82:LEU:HB2	1.94	0.49
1:D:425:ASP:HB2	1:D:476:THR:HB	1.94	0.49
1:E:246:LEU:HD11	1:E:274:GLU:H	1.75	0.49
1:C:631:GLU:O	1:C:634:LYS:N	2.45	0.49
1:E:93:GLN:NE2	1:E:108:GLU:OE1	2.44	0.49
1:B:330:LEU:O	1:B:334:ALA:HB2	2.12	0.49
1:C:135:TYR:O	1:C:139:HIS:N	2.45	0.49
1:D:359:VAL:O	1:D:361:LYS:N	2.45	0.49
1:B:552:ARG:HG2	1:C:335:VAL:HG21	1.94	0.49
1:E:707:SER:OG	1:E:711:LYS:N	2.44	0.49
1:B:295:GLU:HB2	1:B:410:LYS:HE2	1.94	0.49
1:C:429:SER:OG	1:C:431:TRP:O	2.30	0.49
1:D:621:GLY:N	1:D:662:ASP:OD1	2.45	0.49
1:A:643:TYR:O	1:A:647:HIS:ND1	2.34	0.49
1:A:656:ASP:OD2	1:A:660:LYS:NZ	2.40	0.49
1:C:746:LEU:HB3	1:C:751:LEU:HD11	1.93	0.49
1:E:629:LEU:HD23	1:E:670:GLY:HA2	1.94	0.49
1:A:323:LYS:HD3	1:A:326:LYS:HD3	1.94	0.49
1:A:375:LYS:HB2	1:A:417:PRO:HB3	1.95	0.49
1:A:630:GLY:H	1:A:671:ALA:HB2	1.78	0.49
1:C:332:TYR:OH	1:C:336:ARG:NH2	2.46	0.49
1:D:656:ASP:OD1	1:D:656:ASP:N	2.44	0.49
1:E:171:TRP:O	1:E:176:LYS:NZ	2.46	0.49
1:B:67:VAL:HA	1:B:91:ARG:HA	1.95	0.49
1:B:300:LYS:H	1:B:415:ILE:HG23	1.78	0.49
1:B:306:LEU:O	1:B:337:GLN:NE2	2.38	0.49
1:B:695:PRO:HD2	1:B:772:PRO:HD2	1.93	0.49
1:B:144:LEU:HB3	1:B:146:ARG:HH22	1.78	0.48
1:E:201:GLU:OE2	1:E:208:ARG:NH2	2.42	0.48
1:A:573:ASP:OD1	1:A:573:ASP:N	2.46	0.48
1:D:666:HIS:HB2	1:E:708:LEU:HD22	1.94	0.48
1:A:678:SER:O	1:A:703:THR:OG1	2.27	0.48
1:D:186:GLU:HA	1:D:189:LEU:HD12	1.95	0.48
1:D:479:ARG:HH21	1:D:482:LEU:HD23	1.78	0.48
1:D:623:LEU:HD23	1:D:634:LYS:HG2	1.95	0.48
1:E:323:LYS:HA	1:E:326:LYS:HZ1	1.78	0.48
1:C:258:MET:HG2	1:C:298:TRP:CD1	2.49	0.48
1:A:594:VAL:HA	1:A:695:PRO:HA	1.95	0.48
1:D:390:ILE:HD12	1:D:435:PRO:HB2	1.96	0.48

Continued on next page...

Continued from previous page...

Atom-1	Atom-2	Interatomic distance (Å)	Clash overlap (Å)
1:B:580:ILE:HD13	1:C:741:ALA:HB1	1.94	0.48
1:D:688:ALA:O	1:D:692:SER:CB	2.62	0.48
1:E:680:GLY:O	1:E:684:ALA:HB2	2.14	0.48
1:A:765:VAL:HA	1:A:768:TYR:HB2	1.96	0.48
1:E:9:PRO:HD2	1:E:30:SER:HB3	1.96	0.48
1:E:179:ILE:HG23	1:E:188:ARG:HG3	1.95	0.48
1:A:530:VAL:HA	1:A:534:TYR:HD2	1.78	0.48
1:A:591:GLU:O	1:A:593:GLN:N	2.47	0.48
1:A:714:PRO:HA	1:A:739:ASN:HD21	1.79	0.48
1:B:532:SER:O	1:B:536:ARG:NH2	2.47	0.47
1:B:663:LEU:O	1:B:664:HIS:ND1	2.47	0.47
1:C:94:VAL:HG13	1:C:106:ARG:H	1.78	0.47
1:C:614:VAL:HG22	1:C:665:VAL:HG13	1.96	0.47
1:A:493:TYR:CG	1:A:501:ILE:HD11	2.49	0.47
1:C:128:LEU:HG	1:C:165:ILE:HD13	1.95	0.47
1:C:629:LEU:HD23	1:C:671:ALA:HA	1.96	0.47
1:E:353:LEU:HB2	1:E:470:THR:HG22	1.97	0.47
1:B:19:THR:HA	1:B:160:MET:HG3	1.95	0.47
1:B:422:ASP:OD1	1:B:470:THR:OG1	2.25	0.47
1:A:102:TYR:OH	1:A:104:ARG:NH2	2.47	0.47
1:B:17:PRO:HG2	1:B:91:ARG:HH21	1.80	0.47
1:A:289:TYR:HB2	1:A:395:ARG:HD2	1.95	0.47
1:B:139:HIS:CG	1:B:146:ARG:HH11	2.32	0.47
1:B:643:TYR:O	1:B:647:HIS:ND1	2.44	0.47
1:B:125:VAL:HG13	1:B:162:ALA:HB2	1.96	0.47
1:B:232:ALA:O	1:B:236:GLU:HB2	2.14	0.47
1:B:453:ASP:HB2	1:B:456:LEU:HB2	1.95	0.47
1:B:587:LYS:O	1:B:590:THR:OG1	2.26	0.47
1:C:629:LEU:HD22	1:C:633:MET:HG3	1.97	0.47
1:D:262:VAL:HG13	1:D:458:VAL:HG21	1.96	0.47
1:A:277:GLN:HE22	1:A:284:THR:HA	1.79	0.47
1:B:307:ASP:OD2	1:B:310:HIS:N	2.38	0.47
1:B:688:ALA:O	1:B:692:SER:OG	2.24	0.47
1:D:573:ASP:OD1	1:D:573:ASP:N	2.47	0.47
1:A:304:GLU:OE1	1:A:374:ARG:NH2	2.48	0.47
1:C:76:ARG:HG2	1:C:82:LEU:HB3	1.97	0.47
1:A:128:LEU:HD22	1:A:189:LEU:HG	1.97	0.47
1:A:205:LEU:HD21	1:D:226:LEU:HD21	1.97	0.47
1:B:27:ARG:HG2	1:B:57:PRO:HD3	1.96	0.47
1:C:180:LEU:HA	1:C:188:ARG:HH12	1.79	0.47
1:D:256:VAL:HG11	1:D:294:THR:HA	1.97	0.47

Continued on next page...

Continued from previous page...

Atom-1	Atom-2	Interatomic distance (Å)	Clash overlap (Å)
1:A:202:ARG:HH11	1:D:221:GLN:HB3	1.80	0.46
1:A:359:VAL:HG22	1:A:541:ARG:HG2	1.96	0.46
1:B:75:MET:HB2	1:B:83:GLN:HB3	1.96	0.46
1:E:65:TRP:HB2	1:E:181:GLU:HG3	1.97	0.46
1:A:700:ILE:HB	1:A:769:LEU:HD13	1.98	0.46
1:A:27:ARG:HG3	1:A:30:SER:H	1.79	0.46
1:E:259:PRO:HD3	1:E:298:TRP:CG	2.50	0.46
1:A:435:PRO:HB2	1:A:439:MET:HE3	1.97	0.46
1:A:603:THR:OG1	1:A:606:GLY:O	2.33	0.46
1:C:588:ALA:HA	1:C:699:ASP:HB3	1.96	0.46
1:D:29:LYS:NZ	1:D:55:ASP:O	2.43	0.46
1:D:534:TYR:HE1	1:D:581:PRO:HA	1.80	0.46
1:E:516:MET:HE1	1:E:559:LEU:HD13	1.97	0.46
1:A:311:THR:HG21	1:A:333:LEU:HD12	1.98	0.46
1:B:2:ARG:NH1	1:B:96:ASP:OD2	2.33	0.46
1:D:36:GLU:OE1	1:D:102:TYR:OH	2.29	0.46
1:A:16:LEU:HD12	1:A:167:TYR:HB2	1.98	0.46
1:A:101:PRO:HA	1:A:102:TYR:HA	1.64	0.46
1:A:122:ARG:HA	1:A:125:VAL:HB	1.98	0.46
1:B:697:ARG:HD2	1:B:771:LEU:HD13	1.97	0.46
1:C:233:ILE:HG23	1:D:226:LEU:HD22	1.97	0.46
1:E:304:GLU:HG3	1:E:374:ARG:HH21	1.81	0.46
1:B:281:PRO:HB3	1:B:398:ILE:HG22	1.97	0.46
1:D:252:LYS:HA	1:D:255:GLU:HB2	1.98	0.46
1:E:76:ARG:HH21	1:E:82:LEU:HD13	1.80	0.46
1:E:134:LYS:HE2	1:E:200:LEU:HD13	1.97	0.46
1:E:657:PHE:HA	1:E:660:LYS:HB2	1.97	0.46
1:A:425:ASP:OD1	1:A:425:ASP:N	2.49	0.46
1:A:521:GLU:OE1	1:A:568:THR:OG1	2.30	0.46
1:C:68:GLN:HB2	1:C:90:ALA:HB3	1.98	0.46
1:E:9:PRO:O	1:E:27:ARG:NH2	2.49	0.46
1:A:603:THR:H	1:A:607:GLY:HA2	1.80	0.45
1:C:722:LEU:HD23	1:C:722:LEU:HA	1.70	0.45
1:E:13:THR:HA	1:E:173:VAL:HG11	1.97	0.45
1:E:367:SER:HA	1:E:370:ARG:HE	1.80	0.45
1:A:392:GLY:HA2	1:A:402:PRO:HA	1.98	0.45
1:A:602:TRP:CD1	1:A:674:LYS:HB2	2.50	0.45
1:C:759:VAL:HG21	1:C:765:VAL:HG23	1.98	0.45
1:A:169:ALA:HB1	1:A:196:LEU:HD21	1.97	0.45
1:C:139:HIS:CD2	1:C:142:LEU:HB2	2.52	0.45
1:C:144:LEU:HD11	1:C:148:GLN:HE22	1.80	0.45

Continued on next page...

Continued from previous page...

Atom-1	Atom-2	Interatomic distance (Å)	Clash overlap (Å)
1:E:258:MET:HE1	1:E:294:THR:HA	1.98	0.45
1:C:327:GLU:OE2	1:C:328:ARG:NH1	2.50	0.45
1:C:65:TRP:HA	1:C:93:GLN:HA	1.98	0.45
1:D:101:PRO:HA	1:D:102:TYR:HA	1.55	0.45
1:E:76:ARG:HD2	1:E:82:LEU:HD13	1.98	0.45
1:E:303:PRO:HG2	1:E:373:ASN:HB3	1.98	0.45
1:A:395:ARG:HE	1:A:456:LEU:HB2	1.81	0.45
1:A:689:SER:O	1:A:692:SER:OG	2.28	0.45
1:C:507:TRP:HH2	1:C:521:GLU:HA	1.82	0.45
1:C:625:LEU:HD23	1:C:665:VAL:HB	1.98	0.45
1:B:612:ILE:HG21	1:B:683:MET:HG2	1.99	0.45
1:C:532:SER:O	1:C:536:ARG:NH1	2.49	0.45
1:C:641:LEU:HD11	1:C:657:PHE:HE2	1.81	0.45
1:D:699:ASP:OD2	1:D:732:LYS:NZ	2.37	0.45
1:A:385:ARG:NH1	1:A:386:ASP:OD1	2.37	0.45
1:B:407:HIS:CE1	1:B:410:LYS:HD2	2.52	0.45
1:D:11:ARG:NH2	1:D:26:GLY:H	2.15	0.45
1:C:683:MET:HB3	1:C:683:MET:HE2	1.66	0.45
1:C:746:LEU:HD23	1:C:751:LEU:HD21	1.98	0.45
1:D:325:VAL:HG21	1:D:490:ILE:HD11	1.98	0.45
1:A:617:VAL:HG21	1:B:645:ARG:HH11	1.82	0.45
1:C:253:ILE:O	1:C:263:LYS:NZ	2.49	0.45
1:C:325:VAL:O	1:C:329:ILE:HG12	2.17	0.45
1:D:478:PRO:HD2	1:D:481:LEU:HD12	1.97	0.45
1:E:695:PRO:HB2	1:E:771:LEU:HB3	1.99	0.45
1:B:143:ARG:HH12	1:E:187:ALA:H	1.65	0.44
1:C:332:TYR:CG	1:C:351:LEU:HD21	2.52	0.44
1:A:495:ASN:H	1:A:726:HIS:CE1	2.35	0.44
1:B:702:MET:HB3	1:B:702:MET:HE2	1.64	0.44
1:E:423:GLU:HA	1:E:471:ALA:HA	2.00	0.44
1:A:529:ARG:O	1:A:533:GLU:HB2	2.18	0.44
1:B:231:LYS:HD2	1:B:247:GLU:HG2	1.99	0.44
1:E:732:LYS:HE2	1:E:755:GLU:HB3	1.99	0.44
1:A:233:ILE:HG23	1:B:226:LEU:HD22	1.98	0.44
1:A:393:HIS:HB3	1:A:400:ALA:HB1	1.98	0.44
1:A:600:LEU:N	1:A:702:MET:O	2.47	0.44
1:B:340:GLN:HG3	1:B:344:VAL:HA	1.98	0.44
1:B:502:ALA:HA	1:B:506:LEU:HB2	2.00	0.44
1:C:351:LEU:HD22	1:C:488:ILE:HD11	1.99	0.44
1:E:250:ARG:HG3	1:E:270:LEU:HD21	1.99	0.44
1:A:390:ILE:HD11	1:A:435:PRO:HB3	1.99	0.44

Continued on next page...

Continued from previous page...

Atom-1	Atom-2	Interatomic distance (Å)	Clash overlap (Å)
1:A:412:VAL:HG22	1:A:414:VAL:HG22	1.99	0.44
1:B:592:PRO:HD3	1:B:698:MET:HE2	2.00	0.44
1:E:101:PRO:HA	1:E:102:TYR:HA	1.80	0.44
1:E:510:GLN:HB3	1:E:551:ALA:HB2	2.00	0.44
1:A:36:GLU:OE1	1:A:102:TYR:OH	2.35	0.44
1:A:603:THR:HG22	1:A:672:THR:HB	2.00	0.44
1:C:350:ILE:HD13	1:C:443:LEU:HB3	2.00	0.44
1:C:419:ILE:HD12	1:C:465:VAL:HG11	1.99	0.44
1:D:626:THR:OG1	1:D:665:VAL:O	2.32	0.44
1:A:94:VAL:HG13	1:A:105:ALA:HB1	2.00	0.44
1:B:563:TRP:CD1	1:B:567:ARG:HH22	2.36	0.44
1:B:769:LEU:HD12	1:B:769:LEU:HA	1.78	0.44
1:D:15:ILE:HG12	1:D:21:THR:HG21	1.99	0.44
1:D:770:LEU:HB2	1:D:773:GLU:HG2	1.99	0.44
1:B:252:LYS:HE3	1:B:294:THR:HG21	1.98	0.44
1:B:623:LEU:HD11	1:B:663:LEU:HD12	1.99	0.44
1:B:757:LYS:NZ	1:B:768:TYR:HB3	2.33	0.44
1:C:265:LYS:HZ1	1:C:457:ASP:H	1.66	0.44
1:C:405:LEU:HA	1:C:405:LEU:HD23	1.75	0.44
1:D:598:GLN:HE22	1:D:698:MET:HA	1.82	0.44
1:E:492:GLY:H	1:E:723:LEU:HD13	1.82	0.44
1:A:570:ASP:OD1	1:A:570:ASP:N	2.51	0.44
1:C:265:LYS:HG2	1:C:268:LYS:HD2	2.00	0.44
1:A:556:LYS:HD3	1:B:331:GLU:HB2	1.98	0.43
1:A:702:MET:HE2	1:A:702:MET:HB3	1.87	0.43
1:A:722:LEU:HD21	1:A:735:LEU:HD11	2.00	0.43
1:C:308:ILE:HG13	1:C:330:LEU:HD22	1.99	0.43
1:B:273:LEU:HD23	1:B:273:LEU:HA	1.79	0.43
1:C:37:ALA:HB3	1:C:44:ILE:HG23	2.00	0.43
1:E:356:PRO:HG3	1:E:602:TRP:HH2	1.82	0.43
1:B:529:ARG:NH2	1:B:533:GLU:OE2	2.50	0.43
1:C:574:ILE:HD13	1:C:574:ILE:HA	1.81	0.43
1:D:448:ASN:ND2	1:D:462:LEU:O	2.51	0.43
1:D:723:LEU:HD23	1:D:723:LEU:HA	1.69	0.43
1:E:67:VAL:HG12	1:E:91:ARG:HA	2.00	0.43
1:E:450:THR:HA	1:E:459:PRO:HB3	2.00	0.43
1:E:522:VAL:HA	1:E:569:ILE:HB	2.00	0.43
1:E:533:GLU:HB3	1:E:581:PRO:HB3	1.99	0.43
1:B:6:PRO:HB3	1:B:104:ARG:HE	1.83	0.43
1:B:574:ILE:HD13	1:B:574:ILE:HA	1.83	0.43
1:C:558:TRP:HD1	1:C:567:ARG:NH2	2.15	0.43

Continued on next page...

Continued from previous page...

Atom-1	Atom-2	Interatomic distance (Å)	Clash overlap (Å)
1:B:542:GLY:O	1:B:546:GLU:HG2	2.18	0.43
1:B:737:LYS:N	1:B:759:VAL:O	2.52	0.43
1:C:318:ASP:OD1	1:C:370:ARG:NH2	2.48	0.43
1:D:27:ARG:NH1	1:D:53:GLU:OE1	2.48	0.43
1:D:520:ILE:HA	1:D:567:ARG:HB2	2.01	0.43
1:D:552:ARG:HH12	1:E:335:VAL:HG21	1.82	0.43
1:E:122:ARG:HH11	1:E:158:PRO:HG3	1.84	0.43
1:E:363:SER:O	1:E:367:SER:HB2	2.19	0.43
1:A:323:LYS:HA	1:A:323:LYS:HD3	1.84	0.43
1:A:622:LYS:N	1:A:662:ASP:OD1	2.41	0.43
1:C:65:TRP:H	1:C:177:GLN:HE22	1.66	0.43
1:B:621:GLY:N	1:B:662:ASP:OD1	2.35	0.43
1:C:387:GLU:O	1:C:391:ARG:N	2.52	0.43
1:C:694:ARG:HB3	1:C:773:GLU:HA	2.00	0.43
1:D:293:LEU:HD21	1:D:456:LEU:HD22	2.00	0.43
1:A:256:VAL:HG11	1:A:298:TRP:HD1	1.83	0.43
1:C:392:GLY:H	1:C:454:HIS:H	1.66	0.43
1:E:136:VAL:HG21	1:E:146:ARG:HD2	2.01	0.43
1:A:381:LEU:HD22	1:A:424:ILE:HA	2.00	0.43
1:A:533:GLU:HG2	1:A:585:PRO:HA	2.00	0.43
1:B:534:TYR:CE2	1:B:578:LEU:HD22	2.54	0.43
1:E:703:THR:HG21	1:E:721:LYS:HD3	1.99	0.43
1:D:69:ALA:HB1	1:D:86:VAL:HB	2.01	0.42
1:D:419:ILE:HB	1:D:467:PHE:HE1	1.84	0.42
1:B:23:VAL:HB	1:B:84:VAL:HG13	2.01	0.42
1:C:71:VAL:HG13	1:C:86:VAL:HG12	2.00	0.42
1:E:478:PRO:HD2	1:E:481:LEU:HD12	2.00	0.42
1:B:474:LEU:H	1:B:474:LEU:HG	1.72	0.42
1:B:559:LEU:HD21	1:C:337:GLN:HE21	1.84	0.42
1:C:681:ILE:HA	1:C:684:ALA:HB3	2.01	0.42
1:E:610:LEU:HD21	1:E:669:ASP:HB2	2.01	0.42
1:A:702:MET:HE1	1:A:769:LEU:HD22	2.00	0.42
1:B:75:MET:N	1:B:83:GLN:O	2.41	0.42
1:E:213:VAL:HG12	1:E:217:MET:HE3	2.01	0.42
1:B:416:ASN:HB3	1:B:464:LYS:HB3	2.02	0.42
1:B:553:LYS:NZ	1:C:331:GLU:OE2	2.41	0.42
1:C:617:VAL:HA	1:C:618:PRO:HD3	1.87	0.42
1:D:306:LEU:HD21	1:D:372:MET:HE2	2.02	0.42
1:E:162:ALA:HB2	1:E:189:LEU:HD23	2.02	0.42
1:E:358:GLY:HA3	1:E:539:GLY:HA3	2.00	0.42
1:A:280:SER:HB3	1:A:282:GLU:HB2	2.02	0.42

Continued on next page...

Continued from previous page...

Atom-1	Atom-2	Interatomic distance (Å)	Clash overlap (Å)
1:C:204:GLU:HB3	1:C:208:ARG:HH12	1.83	0.42
1:D:323:LYS:H	1:D:326:LYS:HD3	1.84	0.42
1:E:678:SER:O	1:E:704:GLY:N	2.41	0.42
1:B:625:LEU:HB3	1:B:629:LEU:HD12	2.01	0.42
1:B:723:LEU:HD23	1:B:723:LEU:HA	1.80	0.42
1:C:247:GLU:OE1	1:C:250:ARG:NH1	2.45	0.42
1:C:681:ILE:O	1:C:685:THR:OG1	2.34	0.42
1:D:5:LEU:HB2	1:D:45:PHE:CD2	2.55	0.42
1:D:27:ARG:HD2	1:D:53:GLU:HB3	2.02	0.42
1:A:737:LYS:HA	1:A:758:LEU:HD22	2.01	0.42
1:B:418:VAL:HG22	1:B:466:PHE:HB3	2.01	0.42
1:B:611:THR:O	1:B:611:THR:OG1	2.38	0.42
1:C:65:TRP:N	1:C:177:GLN:HE22	2.17	0.42
1:C:597:ALA:HB2	1:C:696:ALA:HB1	2.02	0.42
1:C:734:VAL:HG11	1:C:765:VAL:HG22	2.02	0.42
1:A:98:ILE:HB	1:A:104:ARG:HB2	2.02	0.42
1:B:258:MET:HG2	1:B:262:VAL:HG11	2.02	0.42
1:C:179:ILE:HG23	1:C:188:ARG:HG3	2.02	0.42
1:D:391:ARG:HH21	1:D:438:ALA:HB2	1.83	0.42
1:E:732:LYS:HB3	1:E:757:LYS:HE2	2.02	0.42
1:A:171:TRP:CD1	1:A:175:GLU:HB2	2.55	0.41
1:C:305:VAL:HG12	1:C:372:MET:HA	2.02	0.41
1:D:277:GLN:O	1:E:396:THR:OG1	2.35	0.41
1:A:322:LEU:HD23	1:A:322:LEU:HA	1.91	0.41
1:B:346:ASN:HB3	1:B:348:ALA:HB3	2.02	0.41
1:B:368:ILE:O	1:B:371:SER:OG	2.36	0.41
1:C:113:ILE:HD13	1:C:183:THR:HG22	2.00	0.41
1:C:231:LYS:O	1:C:235:LYS:HG2	2.21	0.41
1:C:384:VAL:HG12	1:C:435:PRO:HG3	2.02	0.41
1:E:484:ARG:HA	1:E:484:ARG:HD3	1.74	0.41
1:E:625:LEU:HB3	1:E:629:LEU:HD12	2.02	0.41
1:C:290:LEU:HD12	1:C:293:LEU:HD12	2.01	0.41
1:D:256:VAL:HG12	1:D:258:MET:HG3	2.02	0.41
1:D:427:MET:HE2	1:D:427:MET:HB3	1.86	0.41
1:D:732:LYS:HE2	1:D:732:LYS:HB2	1.79	0.41
1:A:247:GLU:HA	1:A:250:ARG:HH21	1.85	0.41
1:A:498:LYS:HA	1:A:501:ILE:HD12	2.03	0.41
1:C:333:LEU:HA	1:C:333:LEU:HD23	1.90	0.41
1:D:361:LYS:HD3	1:D:470:THR:HG23	2.03	0.41
1:E:45:PHE:HD1	1:E:68:GLN:HG2	1.85	0.41
1:B:391:ARG:NH2	1:B:441:GLU:OE1	2.54	0.41

Continued on next page...

Continued from previous page...

Atom-1	Atom-2	Interatomic distance (Å)	Clash overlap (Å)
1:B:528:LEU:HD12	1:B:528:LEU:HA	1.91	0.41
1:C:148:GLN:NE2	1:C:168:HIS:O	2.53	0.41
1:C:507:TRP:CH2	1:C:521:GLU:HA	2.55	0.41
1:D:258:MET:HG2	1:D:298:TRP:CD1	2.55	0.41
1:D:629:LEU:HD23	1:D:629:LEU:HA	1.81	0.41
1:B:231:LYS:NZ	1:B:246:LEU:O	2.37	0.41
1:B:249:LEU:HD13	1:B:290:LEU:HB2	2.01	0.41
1:C:641:LEU:HA	1:C:641:LEU:HD12	1.74	0.41
1:D:620:SER:H	1:D:662:ASP:CG	2.28	0.41
1:A:394:ARG:HG3	1:A:397:TYR:HE1	1.86	0.41
1:D:306:LEU:HD23	1:D:306:LEU:HA	1.81	0.41
1:D:494:THR:HB	1:D:726:HIS:CE1	2.55	0.41
1:D:711:LYS:HA	1:D:711:LYS:HD3	1.92	0.41
1:E:438:ALA:HB1	1:E:451:PHE:HZ	1.85	0.41
1:E:558:TRP:HA	1:E:567:ARG:NH1	2.35	0.41
1:E:680:GLY:N	1:E:704:GLY:O	2.45	0.41
1:C:134:LYS:HA	1:C:137:ALA:HB3	2.02	0.41
1:C:320:TYR:HD1	1:C:320:TYR:HA	1.58	0.41
1:D:65:TRP:CD1	1:D:181:GLU:HG2	2.56	0.41
1:A:139:HIS:CE1	1:A:203:PHE:HB2	2.56	0.41
1:A:306:LEU:HB3	1:A:338:LEU:HD23	2.03	0.41
1:B:306:LEU:HA	1:B:306:LEU:HD23	1.89	0.41
1:B:645:ARG:HH11	1:B:645:ARG:HD2	1.77	0.41
1:C:392:GLY:HA2	1:C:402:PRO:HA	2.03	0.41
1:C:626:THR:HG22	1:C:627:GLY:H	1.85	0.41
1:C:667:VAL:HG12	1:C:669:ASP:H	1.85	0.41
1:D:249:LEU:HD13	1:D:290:LEU:HD13	2.03	0.41
1:D:602:TRP:HB3	1:D:674:LYS:HD3	2.02	0.41
1:D:766:LEU:HA	1:D:766:LEU:HD23	1.88	0.41
1:E:131:ALA:HA	1:E:134:LYS:HG2	2.02	0.41
1:E:137:ALA:O	1:E:143:ARG:NH1	2.51	0.41
1:E:378:ARG:HB3	1:E:420:LEU:HB3	2.03	0.41
1:A:129:LYS:HE3	1:A:152:VAL:HG23	2.03	0.41
1:B:521:GLU:HB2	1:B:566:LEU:HD11	2.02	0.41
1:C:315:LEU:HD22	1:C:326:LYS:HZ3	1.85	0.41
1:C:427:MET:HE3	1:C:427:MET:HB2	1.74	0.41
1:D:329:ILE:HD13	1:D:329:ILE:HA	1.91	0.41
1:E:246:LEU:HD11	1:E:273:LEU:HB3	2.02	0.41
1:E:530:VAL:HA	1:E:534:TYR:HD2	1.86	0.41
1:A:387:GLU:O	1:A:391:ARG:N	2.44	0.40
1:B:251:LYS:HD2	1:B:251:LYS:HA	1.86	0.40

Continued on next page...

Continued from previous page...

Atom-1	Atom-2	Interatomic distance (Å)	Clash overlap (Å)
1:B:386:ASP:OD1	1:B:386:ASP:N	2.52	0.40
1:C:139:HIS:NE2	1:C:142:LEU:HB2	2.35	0.40
1:D:409:MET:HE3	1:D:409:MET:HB3	1.86	0.40
1:D:746:LEU:HA	1:D:746:LEU:HD23	1.87	0.40
1:E:148:GLN:HB2	1:E:168:HIS:HE1	1.85	0.40
1:E:535:THR:HG21	1:E:542:GLY:HA3	2.03	0.40
1:E:726:HIS:CG	1:E:754:LEU:HD11	2.56	0.40
1:A:493:TYR:CD1	1:A:501:ILE:HD11	2.56	0.40
1:A:543:LEU:HA	1:A:543:LEU:HD23	1.86	0.40
1:B:355:GLY:HA2	1:B:356:PRO:HD3	1.97	0.40
1:D:758:LEU:HD23	1:D:758:LEU:HA	1.92	0.40
1:E:17:PRO:HB3	1:E:90:ALA:HA	2.03	0.40
1:E:386:ASP:O	1:E:388:ALA:N	2.54	0.40
1:B:497:GLU:O	1:B:501:ILE:HG13	2.21	0.40
1:B:584:ARG:NH2	1:B:590:THR:HG23	2.36	0.40
1:B:677:PRO:HB2	1:B:679:ALA:H	1.86	0.40
1:D:268:LYS:HA	1:D:268:LYS:HD3	1.87	0.40
1:D:293:LEU:HD23	1:D:293:LEU:HA	1.92	0.40
1:E:391:ARG:HD2	1:E:435:PRO:HA	2.03	0.40
1:E:584:ARG:H	1:E:587:LYS:HE3	1.86	0.40
1:A:115:PRO:HD2	1:A:185:LEU:HB3	2.02	0.40
1:A:559:LEU:HA	1:A:559:LEU:HD22	1.83	0.40
1:A:629:LEU:HD22	1:A:667:VAL:HB	2.02	0.40
1:B:453:ASP:HB3	1:B:456:LEU:H	1.87	0.40
1:D:273:LEU:HB3	1:D:274:GLU:H	1.67	0.40
1:D:423:GLU:OE2	1:D:472:ASN:ND2	2.53	0.40
1:E:205:LEU:HD12	1:E:208:ARG:HE	1.87	0.40
1:E:380:SER:HB3	1:E:389:GLU:HB3	2.03	0.40
1:A:267:LEU:HD23	1:A:270:LEU:HD13	2.04	0.40
1:A:290:LEU:HD12	1:A:290:LEU:HA	1.83	0.40
1:C:101:PRO:HA	1:C:102:TYR:HA	1.70	0.40
1:C:643:TYR:HD2	1:C:710:GLY:HA3	1.86	0.40
1:C:702:MET:HE2	1:C:769:LEU:HD13	2.02	0.40
1:D:663:LEU:HD23	1:D:663:LEU:HA	1.87	0.40

There are no symmetry-related clashes.

5.3 Torsion angles

5.3.1 Protein backbone

In the following table, the Percentiles column shows the percent Ramachandran outliers of the chain as a percentile score with respect to all PDB entries followed by that with respect to all EM entries.

The Analysed column shows the number of residues for which the backbone conformation was analysed, and the total number of residues.

Mol	Chain	Analysed	Favoured	Allowed	Outliers	Percentiles	
1	A	771/793 (97%)	698 (90%)	73 (10%)	0	100	100
1	B	771/793 (97%)	677 (88%)	92 (12%)	2 (0%)	37	67
1	C	771/793 (97%)	665 (86%)	104 (14%)	2 (0%)	37	67
1	D	771/793 (97%)	678 (88%)	91 (12%)	2 (0%)	37	67
1	E	771/793 (97%)	681 (88%)	89 (12%)	1 (0%)	48	78
All	All	3855/3965 (97%)	3399 (88%)	449 (12%)	7 (0%)	45	72

All (7) Ramachandran outliers are listed below:

Mol	Chain	Res	Type
1	C	714	PRO
1	D	281	PRO
1	E	52	PRO
1	B	677	PRO
1	C	52	PRO
1	D	591	GLU
1	B	591	GLU

5.3.2 Protein sidechains

In the following table, the Percentiles column shows the percent sidechain outliers of the chain as a percentile score with respect to all PDB entries followed by that with respect to all EM entries.

The Analysed column shows the number of residues for which the sidechain conformation was analysed, and the total number of residues.

Mol	Chain	Analysed	Rotameric	Outliers	Percentiles	
1	A	649/665 (98%)	644 (99%)	5 (1%)	79	85
1	B	649/665 (98%)	636 (98%)	13 (2%)	50	68

Continued on next page...

Continued from previous page...

Mol	Chain	Analysed	Rotameric	Outliers	Percentiles	
1	C	649/665 (98%)	643 (99%)	6 (1%)	75	84
1	D	649/665 (98%)	643 (99%)	6 (1%)	75	84
1	E	649/665 (98%)	648 (100%)	1 (0%)	92	96
All	All	3245/3325 (98%)	3214 (99%)	31 (1%)	71	82

All (31) residues with a non-rotameric sidechain are listed below:

Mol	Chain	Res	Type
1	A	84	VAL
1	A	330	LEU
1	A	386	ASP
1	A	559	LEU
1	A	715	ILE
1	B	243	LEU
1	B	352	VAL
1	B	379	ILE
1	B	386	ASP
1	B	412	VAL
1	B	414	VAL
1	B	458	VAL
1	B	508	PRO
1	B	578	LEU
1	B	580	ILE
1	B	612	ILE
1	B	617	VAL
1	B	711	LYS
1	C	354	VAL
1	C	412	VAL
1	C	469	THR
1	C	681	ILE
1	C	685	THR
1	C	733	ILE
1	D	275	ARG
1	D	344	VAL
1	D	405	LEU
1	D	476	THR
1	D	535	THR
1	D	612	ILE
1	E	350	ILE

Sometimes sidechains can be flipped to improve hydrogen bonding and reduce clashes. All (43)

such sidechains are listed below:

Mol	Chain	Res	Type
1	A	220	ASN
1	A	277	GLN
1	A	393	HIS
1	A	449	ASN
1	A	499	GLN
1	A	510	GLN
1	A	649	GLN
1	B	139	HIS
1	B	177	GLN
1	B	220	ASN
1	B	229	GLN
1	B	277	GLN
1	B	319	HIS
1	B	407	HIS
1	B	472	ASN
1	B	499	GLN
1	B	649	GLN
1	C	73	GLN
1	C	83	GLN
1	C	168	HIS
1	C	177	GLN
1	C	234	GLN
1	C	739	ASN
1	D	49	GLN
1	D	68	GLN
1	D	216	GLN
1	D	220	ASN
1	D	310	HIS
1	D	407	HIS
1	D	598	GLN
1	D	628	GLN
1	D	664	HIS
1	D	666	HIS
1	D	726	HIS
1	D	727	GLN
1	D	742	GLN
1	E	12	ASN
1	E	168	HIS
1	E	340	GLN
1	E	411	GLN
1	E	447	GLN
1	E	598	GLN

Continued on next page...

Continued from previous page...

Mol	Chain	Res	Type
1	E	727	GLN

5.3.3 RNA ⓘ

There are no RNA molecules in this entry.

5.4 Non-standard residues in protein, DNA, RNA chains ⓘ

There are no non-standard protein/DNA/RNA residues in this entry.

5.5 Carbohydrates ⓘ

There are no oligosaccharides in this entry.

5.6 Ligand geometry ⓘ

There are no ligands in this entry.

5.7 Other polymers ⓘ

There are no such residues in this entry.

5.8 Polymer linkage issues ⓘ

There are no chain breaks in this entry.

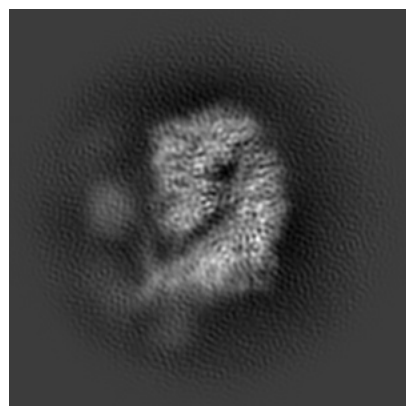
6 Map visualisation [i](#)

This section contains visualisations of the EMDB entry EMD-34109. These allow visual inspection of the internal detail of the map and identification of artifacts.

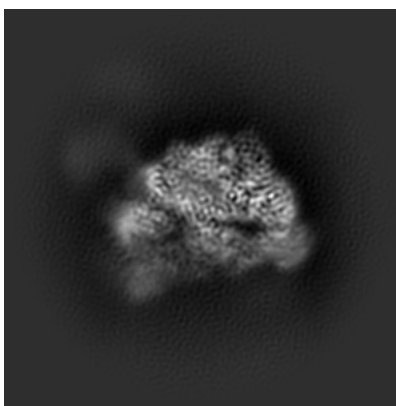
Images derived from a raw map, generated by summing the deposited half-maps, are presented below the corresponding image components of the primary map to allow further visual inspection and comparison with those of the primary map.

6.1 Orthogonal projections [i](#)

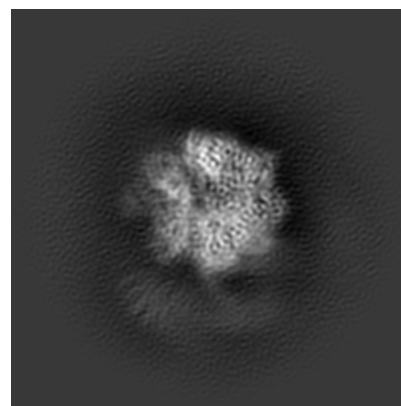
6.1.1 Primary map



X

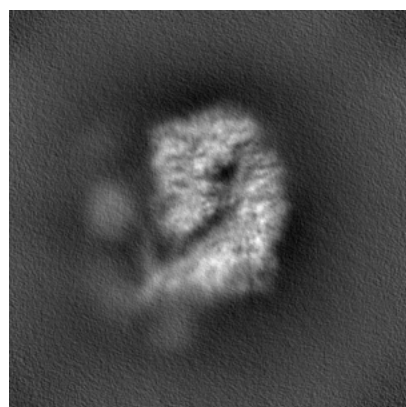


Y

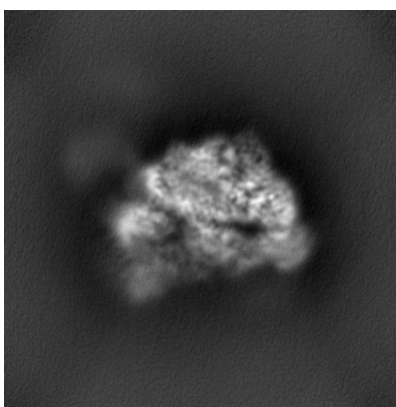


Z

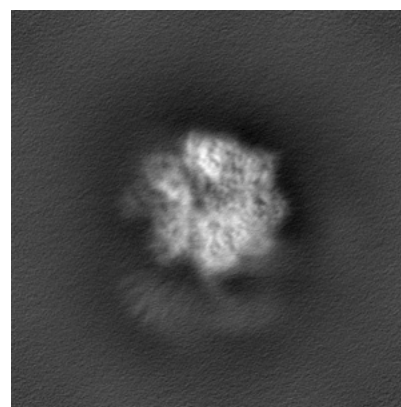
6.1.2 Raw map



X



Y

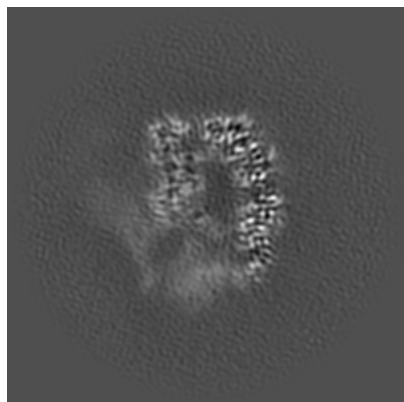


Z

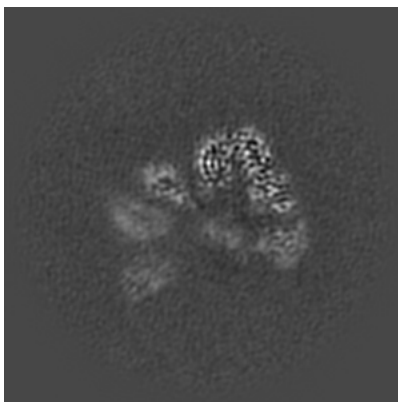
The images above show the map projected in three orthogonal directions.

6.2 Central slices [i](#)

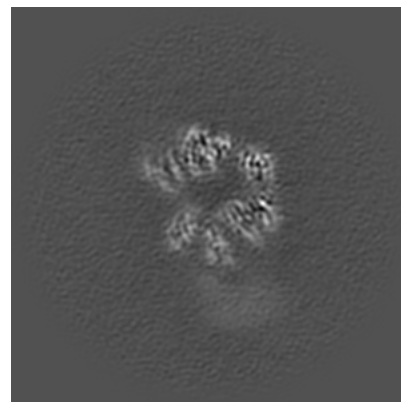
6.2.1 Primary map



X Index: 168

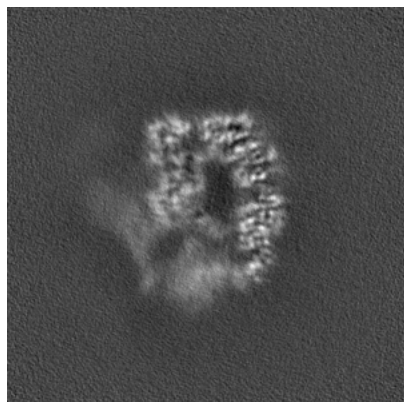


Y Index: 168

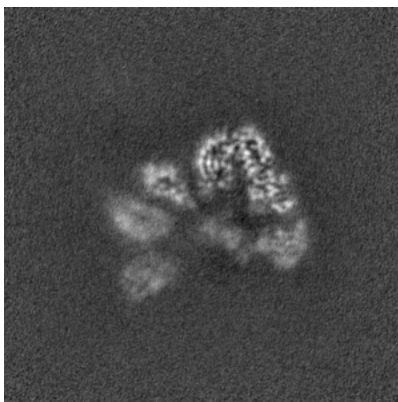


Z Index: 168

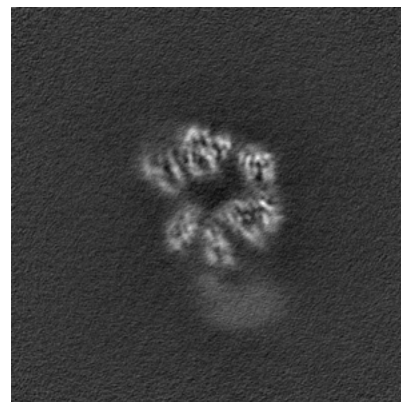
6.2.2 Raw map



X Index: 168



Y Index: 168

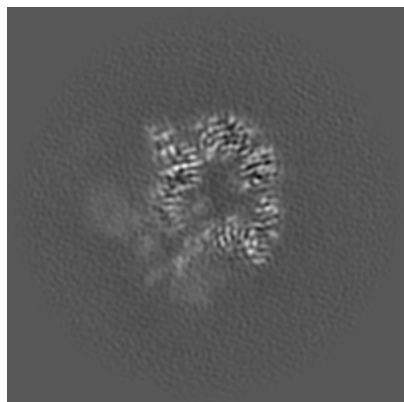


Z Index: 168

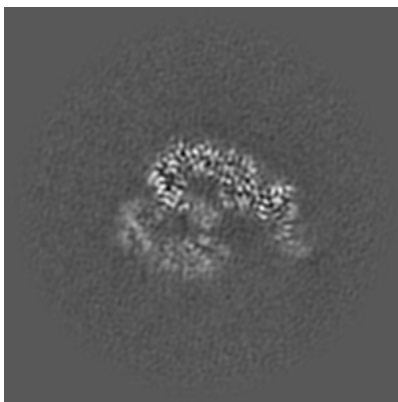
The images above show central slices of the map in three orthogonal directions.

6.3 Largest variance slices [i](#)

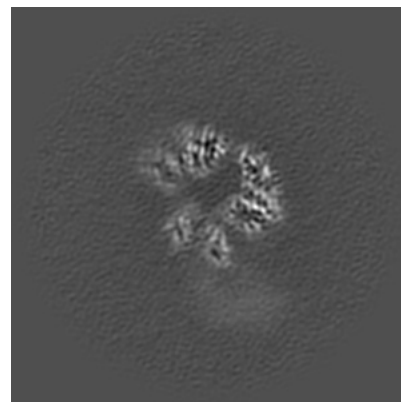
6.3.1 Primary map



X Index: 176

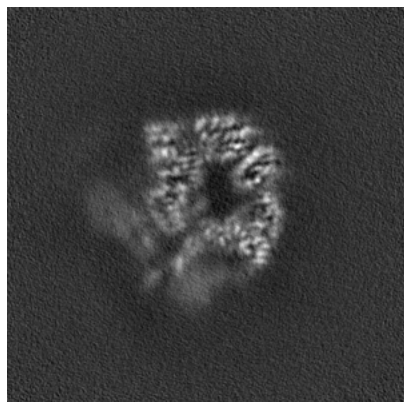


Y Index: 197

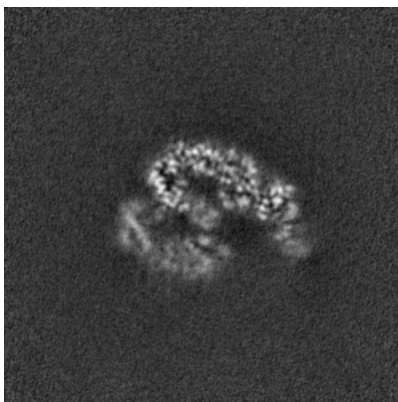


Z Index: 172

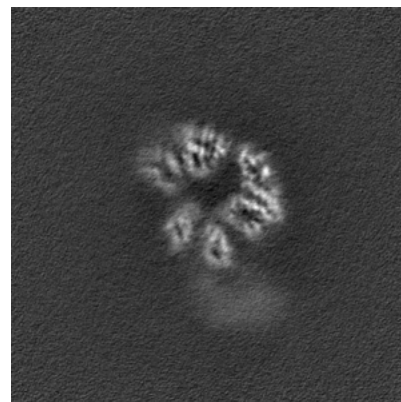
6.3.2 Raw map



X Index: 174



Y Index: 197

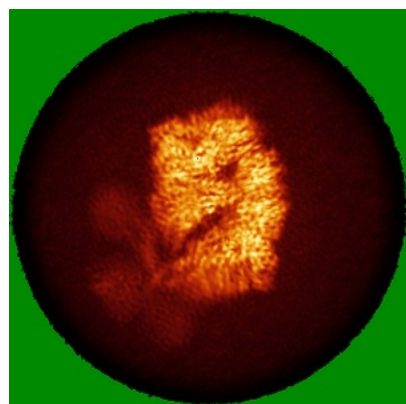


Z Index: 172

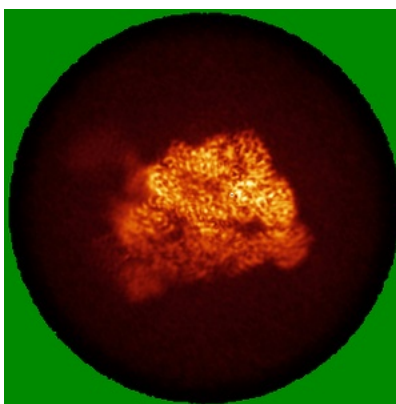
The images above show the largest variance slices of the map in three orthogonal directions.

6.4 Orthogonal standard-deviation projections (False-color) [i](#)

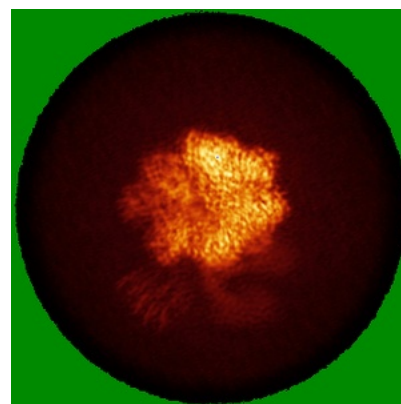
6.4.1 Primary map



X

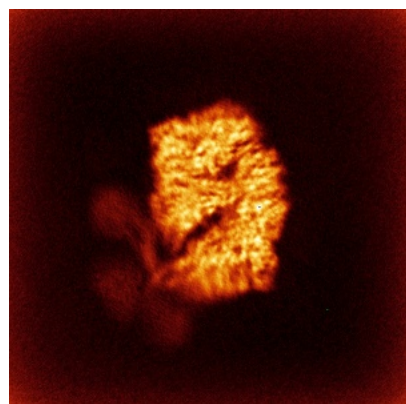


Y

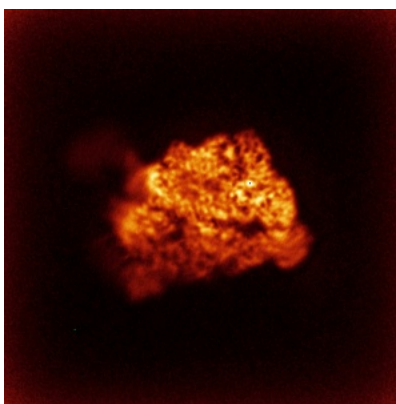


Z

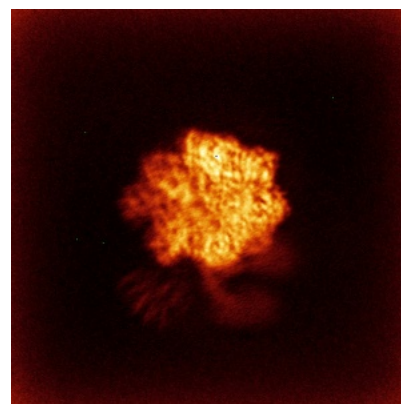
6.4.2 Raw map



X



Y

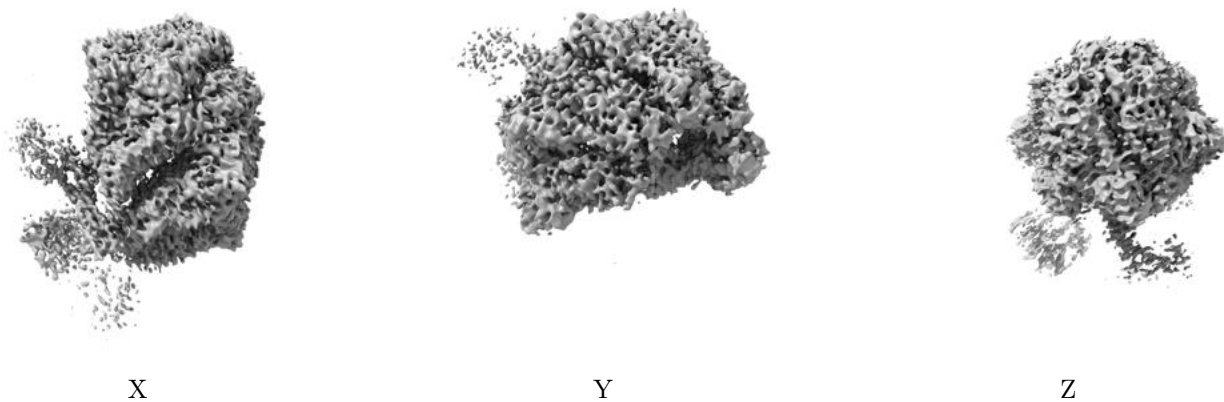


Z

The images above show the map standard deviation projections with false color in three orthogonal directions. Minimum values are shown in green, max in blue, and dark to light orange shades represent small to large values respectively.

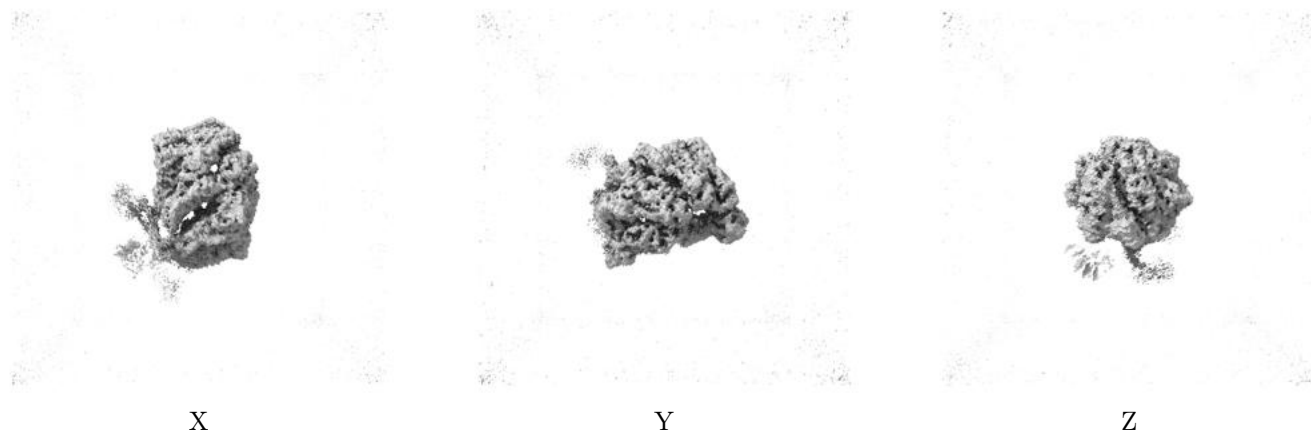
6.5 Orthogonal surface views [i](#)

6.5.1 Primary map



The images above show the 3D surface view of the map at the recommended contour level 0.196. These images, in conjunction with the slice images, may facilitate assessment of whether an appropriate contour level has been provided.

6.5.2 Raw map



These images show the 3D surface of the raw map. The raw map's contour level was selected so that its surface encloses the same volume as the primary map does at its recommended contour level.

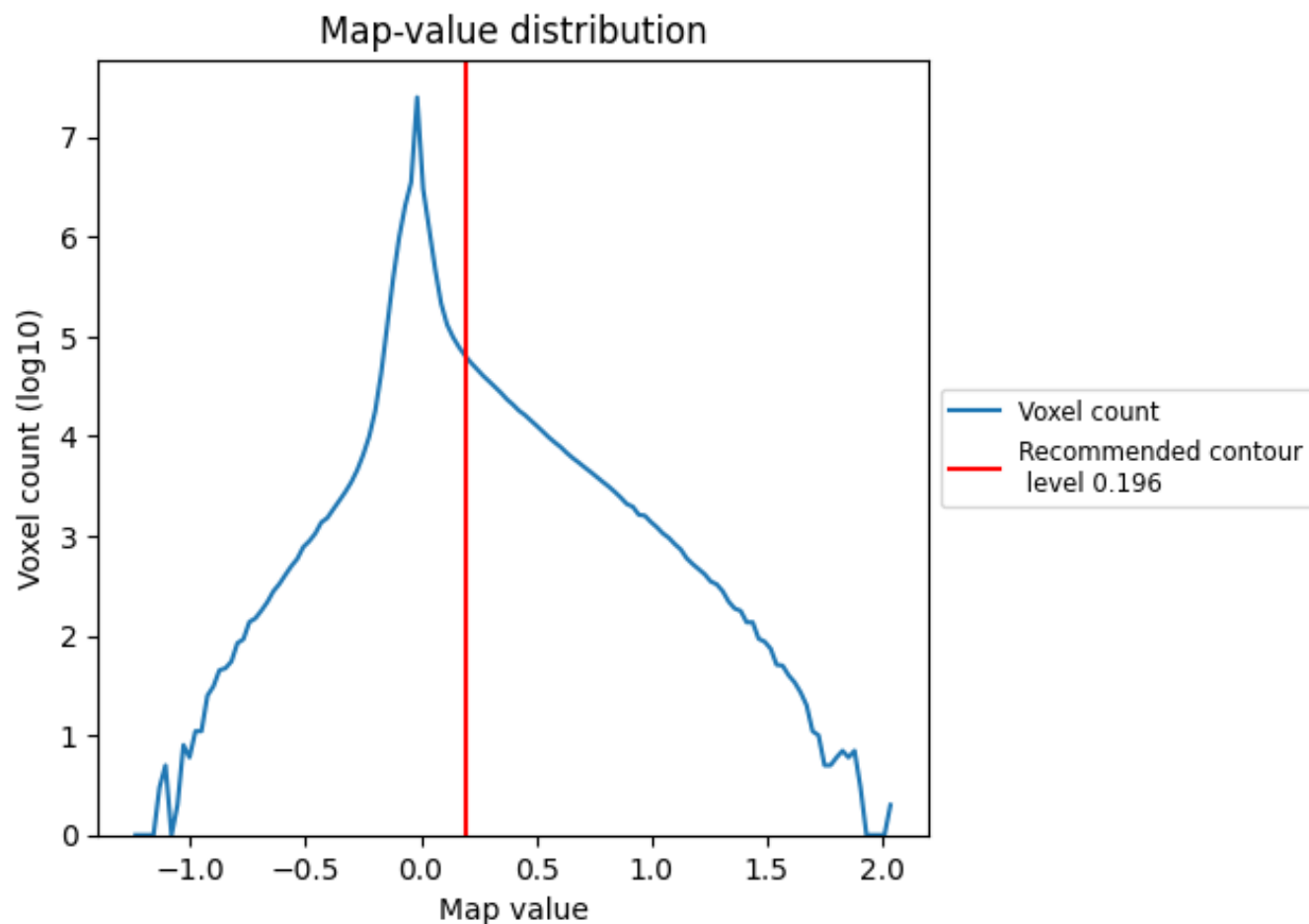
6.6 Mask visualisation [i](#)

This section was not generated. No masks/segmentation were deposited.

7 Map analysis [i](#)

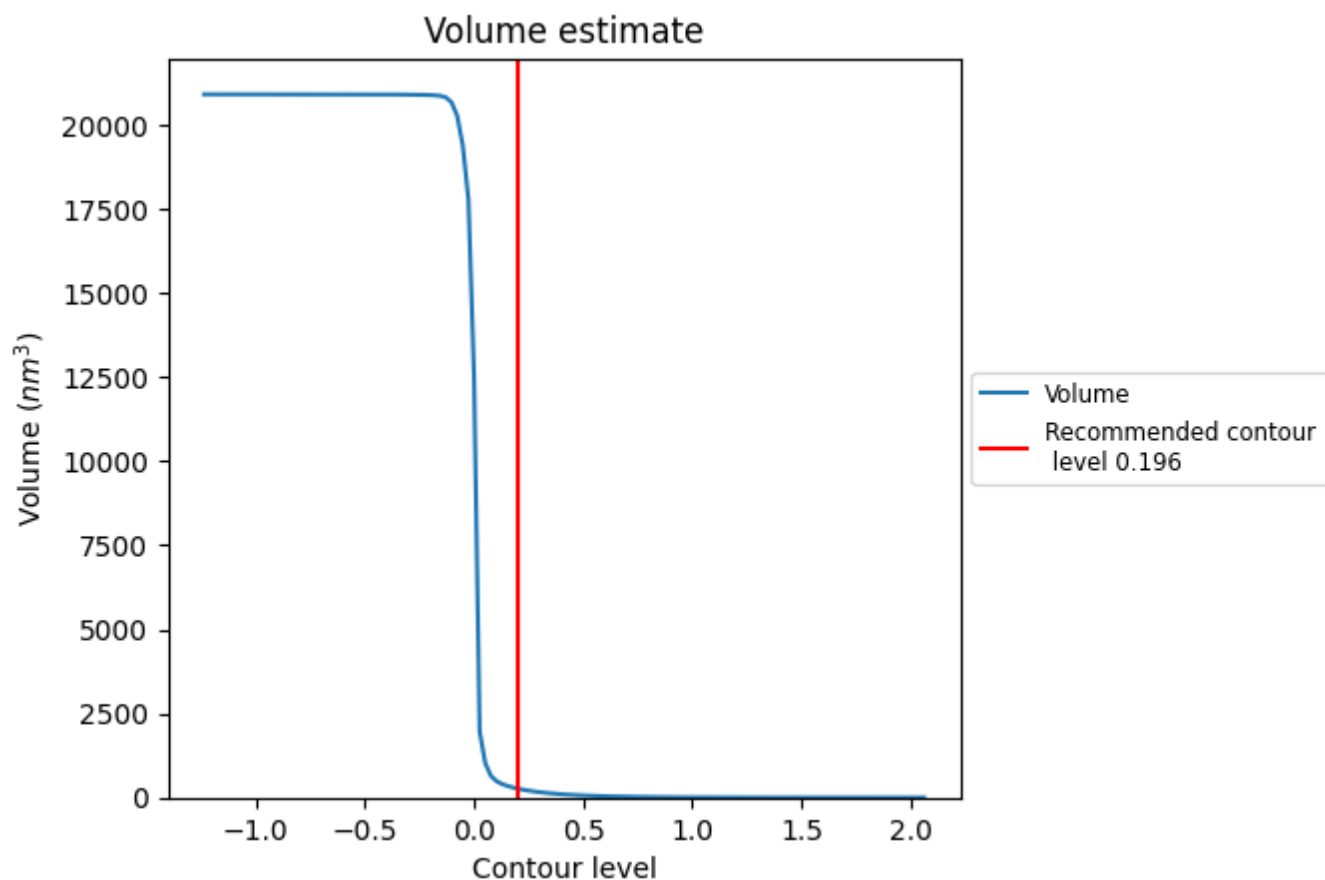
This section contains the results of statistical analysis of the map.

7.1 Map-value distribution [i](#)



The map-value distribution is plotted in 128 intervals along the x-axis. The y-axis is logarithmic. A spike in this graph at zero usually indicates that the volume has been masked.

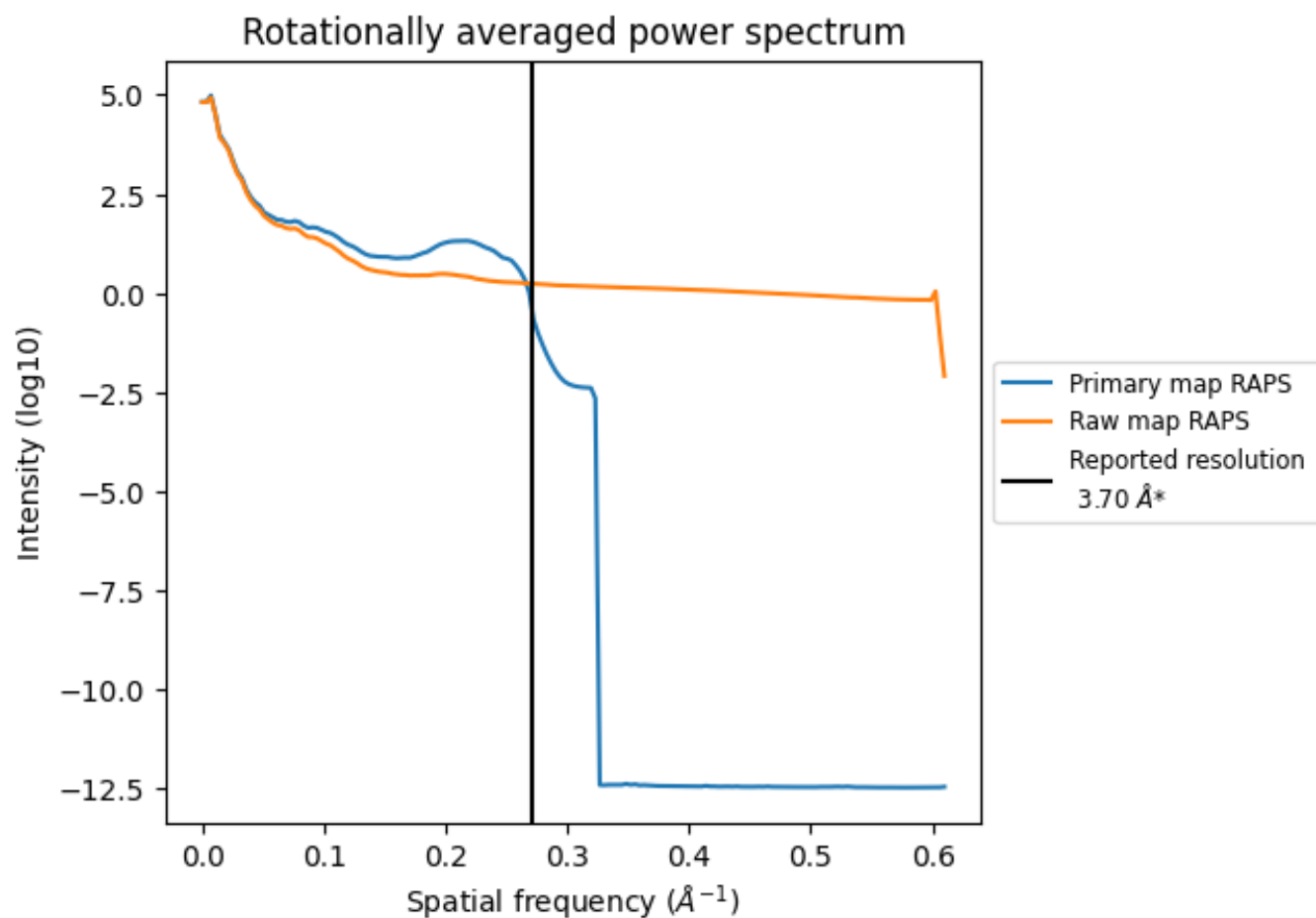
7.2 Volume estimate [i](#)



The volume at the recommended contour level is 271 nm³; this corresponds to an approximate mass of 245 kDa.

The volume estimate graph shows how the enclosed volume varies with the contour level. The recommended contour level is shown as a vertical line and the intersection between the line and the curve gives the volume of the enclosed surface at the given level.

7.3 Rotationally averaged power spectrum ⓘ

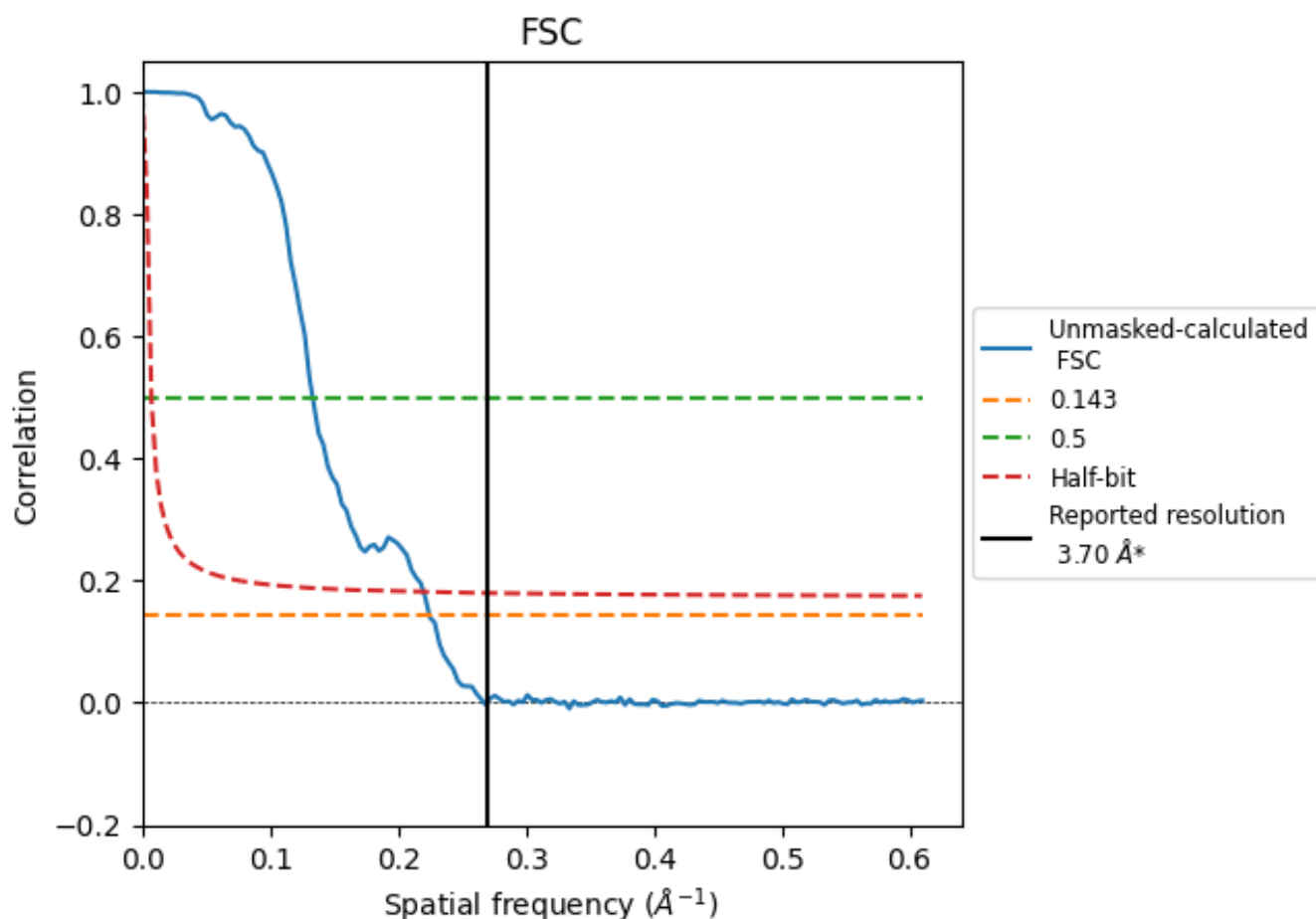


*Reported resolution corresponds to spatial frequency of 0.270 Å⁻¹

8 Fourier-Shell correlation [i](#)

Fourier-Shell Correlation (FSC) is the most commonly used method to estimate the resolution of single-particle and subtomogram-averaged maps. The shape of the curve depends on the imposed symmetry, mask and whether or not the two 3D reconstructions used were processed from a common reference. The reported resolution is shown as a black line. A curve is displayed for the half-bit criterion in addition to lines showing the 0.143 gold standard cut-off and 0.5 cut-off.

8.1 FSC [i](#)



*Reported resolution corresponds to spatial frequency of 0.270 Å⁻¹

8.2 Resolution estimates [i](#)

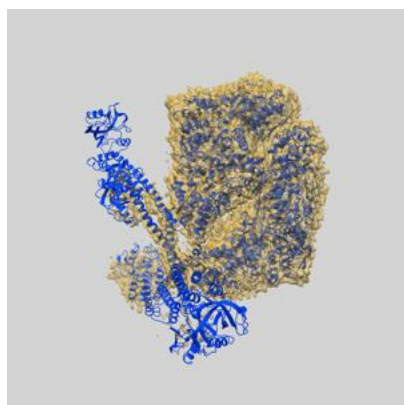
Resolution estimate (Å)	Estimation criterion (FSC cut-off)		
	0.143	0.5	Half-bit
Reported by author	3.70	-	-
Author-provided FSC curve	-	-	-
Unmasked-calculated*	4.45	7.51	4.55

*Resolution estimate based on FSC curve calculated by comparison of deposited half-maps. The value from deposited half-maps intersecting FSC 0.143 CUT-OFF 4.45 differs from the reported value 3.7 by more than 10 %

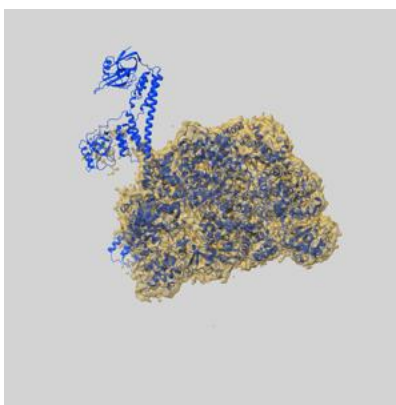
9 Map-model fit [i](#)

This section contains information regarding the fit between EMDB map EMD-34109 and PDB model 7YUP. Per-residue inclusion information can be found in [section 3](#) on [page 4](#).

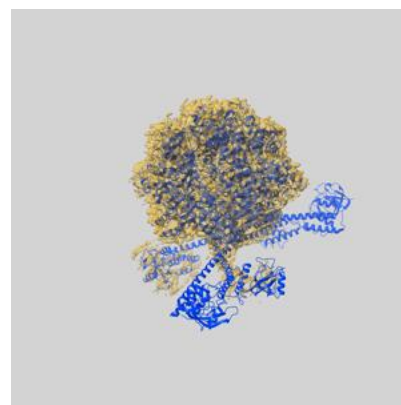
9.1 Map-model overlay [i](#)



X



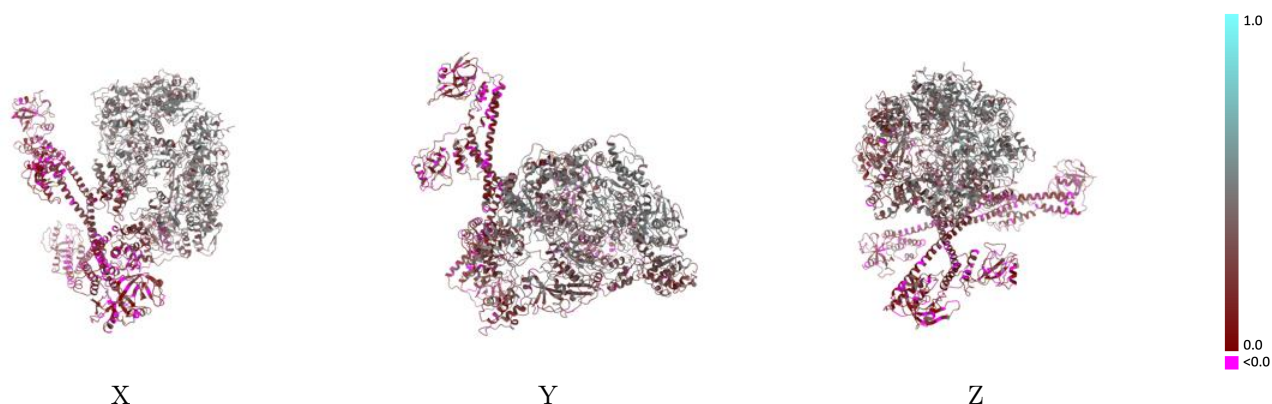
Y



Z

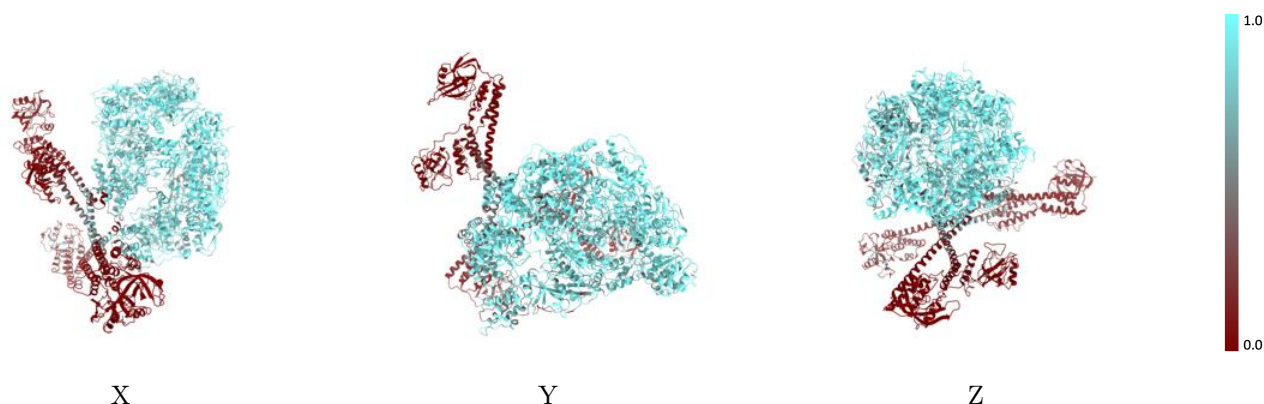
The images above show the 3D surface view of the map at the recommended contour level 0.196 at 50% transparency in yellow overlaid with a ribbon representation of the model coloured in blue. These images allow for the visual assessment of the quality of fit between the atomic model and the map.

9.2 Q-score mapped to coordinate model [i](#)



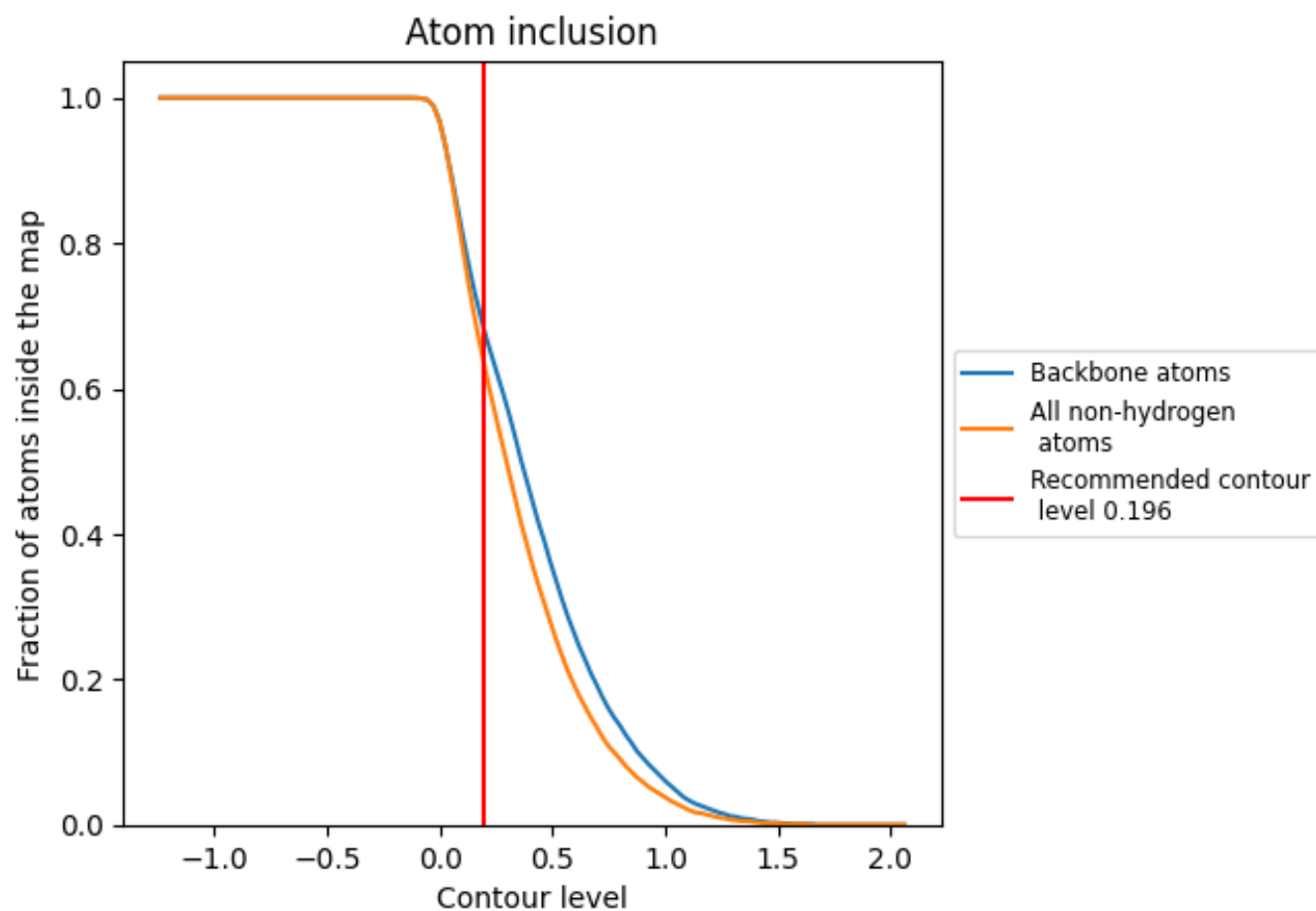
The images above show the model with each residue coloured according to its Q-score. This shows their resolvability in the map with higher Q-score values reflecting better resolvability. Please note: Q-score is calculating the resolvability of atoms, and thus high values are only expected at resolutions at which atoms can be resolved. Low Q-score values may therefore be expected for many entries.

9.3 Atom inclusion mapped to coordinate model [i](#)



The images above show the model with each residue coloured according to its atom inclusion. This shows to what extent they are inside the map at the recommended contour level (0.196).

9.4 Atom inclusion [i](#)



At the recommended contour level, 68% of all backbone atoms, 63% of all non-hydrogen atoms, are inside the map.

9.5 Map-model fit summary ⓘ

The table lists the average atom inclusion at the recommended contour level (0.196) and Q-score for the entire model and for each chain.

Chain	Atom inclusion	Q-score
All	<div></div> 0.6340	<div></div> 0.3010
A	<div></div> 0.6360	<div></div> 0.2830
B	<div></div> 0.6380	<div></div> 0.3360
C	<div></div> 0.6770	<div></div> 0.3330
D	<div></div> 0.6500	<div></div> 0.3250
E	<div></div> 0.5670	<div></div> 0.2310

