



Full wwPDB EM Validation Report ⓘ

Jun 24, 2025 – 06:59 PM JST

PDB ID : 8YQT / pdb_00008yqt
EMDB ID : EMD-39505
Title : African swine fever virus RNA Polymerase-M1249L complex2
Authors : Feng, X.Y.
Deposited on : 2024-03-20
Resolution : 2.56 Å(reported)

This is a Full wwPDB EM Validation Report for a publicly released PDB entry.

We welcome your comments at validation@mail.wwpdb.org

A user guide is available at

<https://www.wwpdb.org/validation/2017/EMValidationReportHelp>

with specific help available everywhere you see the ⓘ symbol.

The types of validation reports are described at

<http://www.wwpdb.org/validation/2017/FAQs#types>.

The following versions of software and data (see [references ⓘ](#)) were used in the production of this report:

EMDB validation analysis : 0.0.1.dev118
MolProbity : 4-5-2 with Phenix2.0rc1
Percentile statistics : 20231227.v01 (using entries in the PDB archive December 27th 2023)
MapQ : 1.9.13
Ideal geometry (proteins) : Engh & Huber (2001)
Ideal geometry (DNA, RNA) : Parkinson et al. (1996)
Validation Pipeline (wwPDB-VP) : 2.44

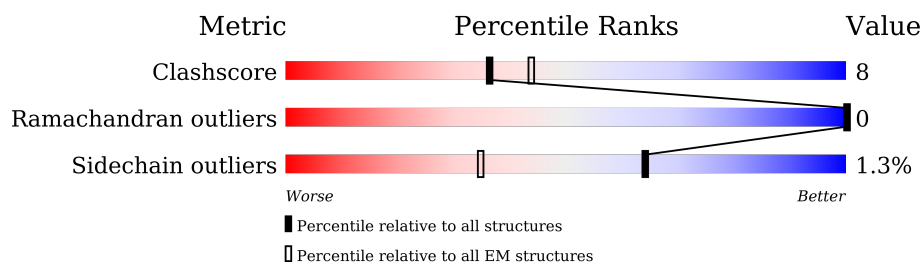
1 Overall quality at a glance

The following experimental techniques were used to determine the structure:

ELECTRON MICROSCOPY

The reported resolution of this entry is 2.56 Å.

Percentile scores (ranging between 0-100) for global validation metrics of the entry are shown in the following graphic. The table shows the number of entries on which the scores are based.



Metric	Whole archive (#Entries)	EM structures (#Entries)
Clashscore	210492	15764
Ramachandran outliers	207382	16835
Sidechain outliers	206894	16415

The table below summarises the geometric issues observed across the polymeric chains and their fit to the map. The red, orange, yellow and green segments of the bar indicate the fraction of residues that contain outliers for ≥ 3 , 2, 1 and 0 types of geometric quality criteria respectively. A grey segment represents the fraction of residues that are not modelled. The numeric value for each fraction is indicated below the corresponding segment, with a dot representing fractions $\leq 5\%$. The upper red bar (where present) indicates the fraction of residues that have poor fit to the EM map (all-atom inclusion $< 40\%$). The numeric value is given above the bar.

Mol	Chain	Length	Quality of chain
1	A	1450	<div> <div>5%</div> <div>80%</div> <div>17%</div> <div>.</div> </div>
2	E	147	<div> <div>55%</div> <div>12%</div> <div>32%</div> <div>.</div> </div>
3	B	1242	<div> <div>5%</div> <div>80%</div> <div>16%</div> <div>.</div> </div>
4	C	359	<div> <div>83%</div> <div>17%</div> </div>
5	D	205	<div> <div>7%</div> <div>79%</div> <div>21%</div> </div>
6	H	80	<div> <div>72%</div> <div>26%</div> <div>.</div> </div>
7	G	105	<div> <div>72%</div> <div>28%</div> </div>
8	F	339	<div> <div>75%</div> <div>76%</div> <div>23%</div> <div>.</div> </div>

Continued on next page...

Continued from previous page...

Mol	Chain	Length	Quality of chain
9	J	1249	<div><div><div></div><div></div><div></div><div></div><div></div></div><div>7%33%9%57%</div></div>

2 Entry composition

There are 11 unique types of molecules in this entry. The entry contains 34629 atoms, of which 0 are hydrogens and 0 are deuteriums.

In the tables below, the AltConf column contains the number of residues with at least one atom in alternate conformation and the Trace column contains the number of residues modelled with at most 2 atoms.

- Molecule 1 is a protein called DNA-directed RNA polymerase subunit.

Mol	Chain	Residues	Atoms					AltConf	Trace
1	A	1410	Total	C	N	O	S	0	0
			11227	7124	1955	2086	62		

- Molecule 2 is a protein called C147L.

Mol	Chain	Residues	Atoms					AltConf	Trace
2	E	100	Total	C	N	O	S	0	0
			787	503	137	143	4		

- Molecule 3 is a protein called DNA-directed RNA polymerase subunit beta.

Mol	Chain	Residues	Atoms					AltConf	Trace
3	B	1204	Total	C	N	O	S	0	0
			9530	6026	1670	1784	50		

- Molecule 4 is a protein called DNA-directed RNA polymerase RPB3-11 homolog.

Mol	Chain	Residues	Atoms					AltConf	Trace
4	C	359	Total	C	N	O	S	0	0
			2914	1890	482	529	13		

- Molecule 5 is a protein called DNA-directed RNA polymerase RPB5 homolog.

Mol	Chain	Residues	Atoms					AltConf	Trace
5	D	205	Total	C	N	O	S	0	0
			1668	1088	278	294	8		

- Molecule 6 is a protein called DNA-directed RNA polymerase RPB10 homolog.

Mol	Chain	Residues	Atoms					AltConf	Trace
6	H	80	Total	C	N	O	S	0	0
			630	411	102	110	7		

- Molecule 7 is a protein called C122R.

Mol	Chain	Residues	Atoms					AltConf	Trace
7	G	105	Total	C	N	O	S	0	0
			815	507	141	152	15		

- Molecule 8 is a protein called D339L.

Mol	Chain	Residues	Atoms					AltConf	Trace
8	F	339	Total	C	N	O	S	0	0
			2727	1753	451	509	14		

- Molecule 9 is a protein called M1249L.

Mol	Chain	Residues	Atoms					AltConf	Trace
9	J	531	Total	C	N	O	S	0	0
			4324	2781	705	822	16		

- Molecule 10 is MAGNESIUM ION (CCD ID: MG) (formula: Mg).

Mol	Chain	Residues	Atoms		AltConf
10	A	1	Total	Mg	0
			1	1	

- Molecule 11 is ZINC ION (CCD ID: ZN) (formula: Zn).

Mol	Chain	Residues	Atoms		AltConf
11	A	1	Total	Zn	0
			1	1	
11	B	1	Total	Zn	0
			1	1	
11	H	1	Total	Zn	0
			1	1	
11	G	1	Total	Zn	0
			1	1	
11	J	2	Total	Zn	0
			2	2	

3 Residue-property plots

These plots are drawn for all protein, RNA, DNA and oligosaccharide chains in the entry. The first graphic for a chain summarises the proportions of the various outlier classes displayed in the second graphic. The second graphic shows the sequence view annotated by issues in geometry and atom inclusion in map density. Residues are color-coded according to the number of geometric quality criteria for which they contain at least one outlier: green = 0, yellow = 1, orange = 2 and red = 3 or more. A red diamond above a residue indicates a poor fit to the EM map for this residue (all-atom inclusion < 40%). Stretches of 2 or more consecutive residues without any outlier are shown as a green connector. Residues present in the sample, but not in the model, are shown in grey.

• Molecule 1: DNA-directed RNA polymerase subunit

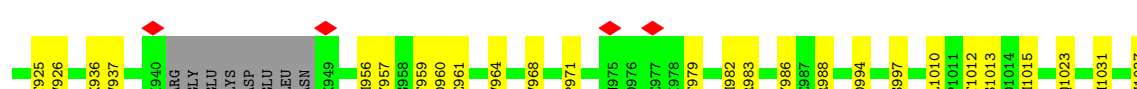
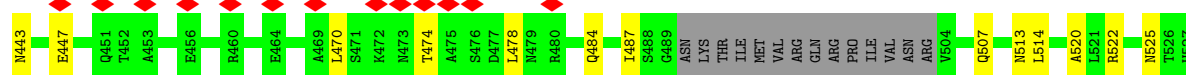
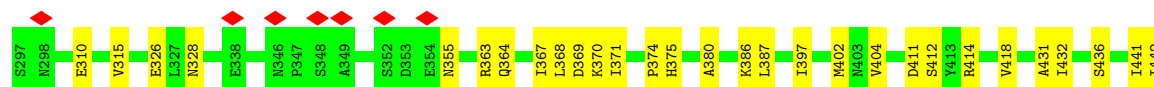
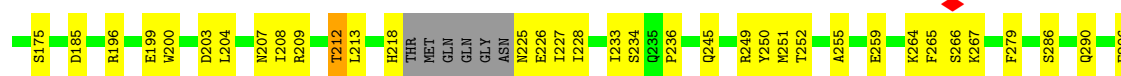
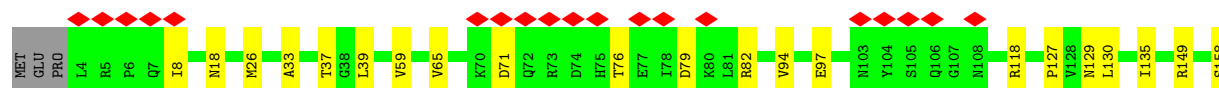
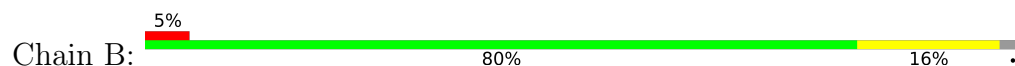





• Molecule 2: C147L

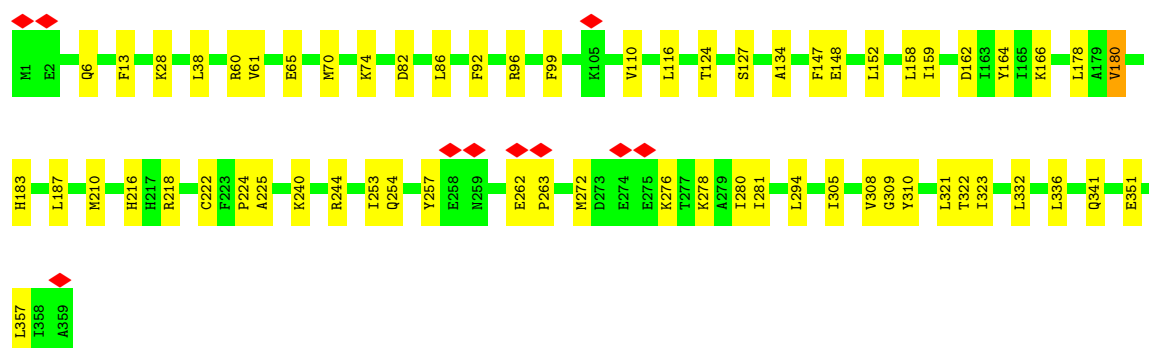


• Molecule 3: DNA-directed RNA polymerase subunit beta




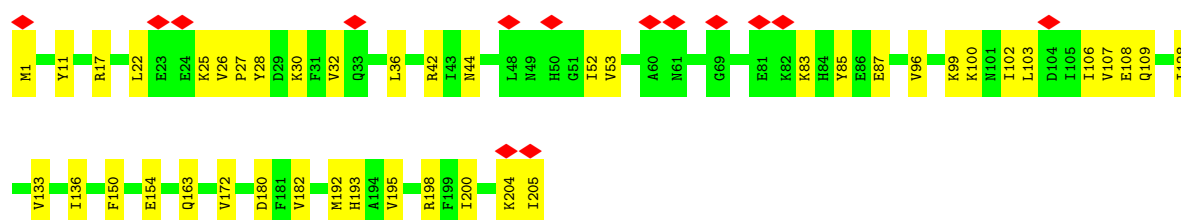
• Molecule 4: DNA-directed RNA polymerase RPB3-11 homolog

Chain C:  83% 17%



- Molecule 5: DNA-directed RNA polymerase RPB5 homolog

Chain D:  7% 79% 21%



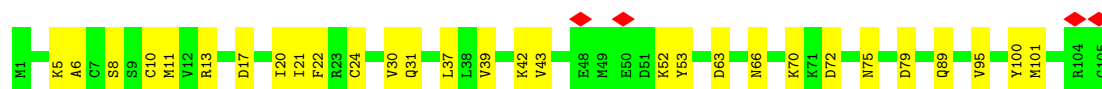
- Molecule 6: DNA-directed RNA polymerase RPB10 homolog

Chain H:  72% 26%




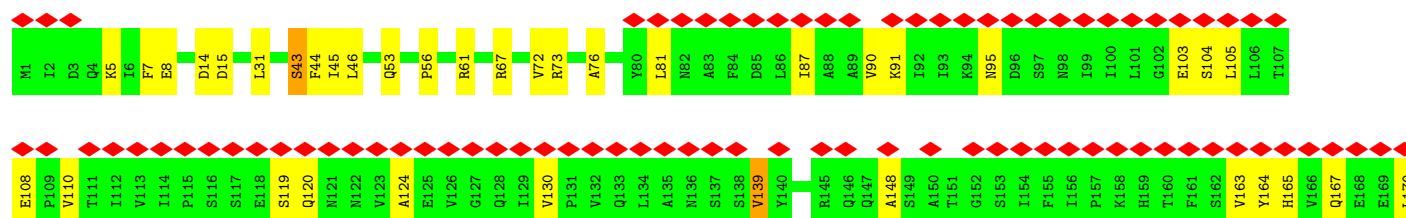
- Molecule 7: C122R

Chain G:  72% 28%

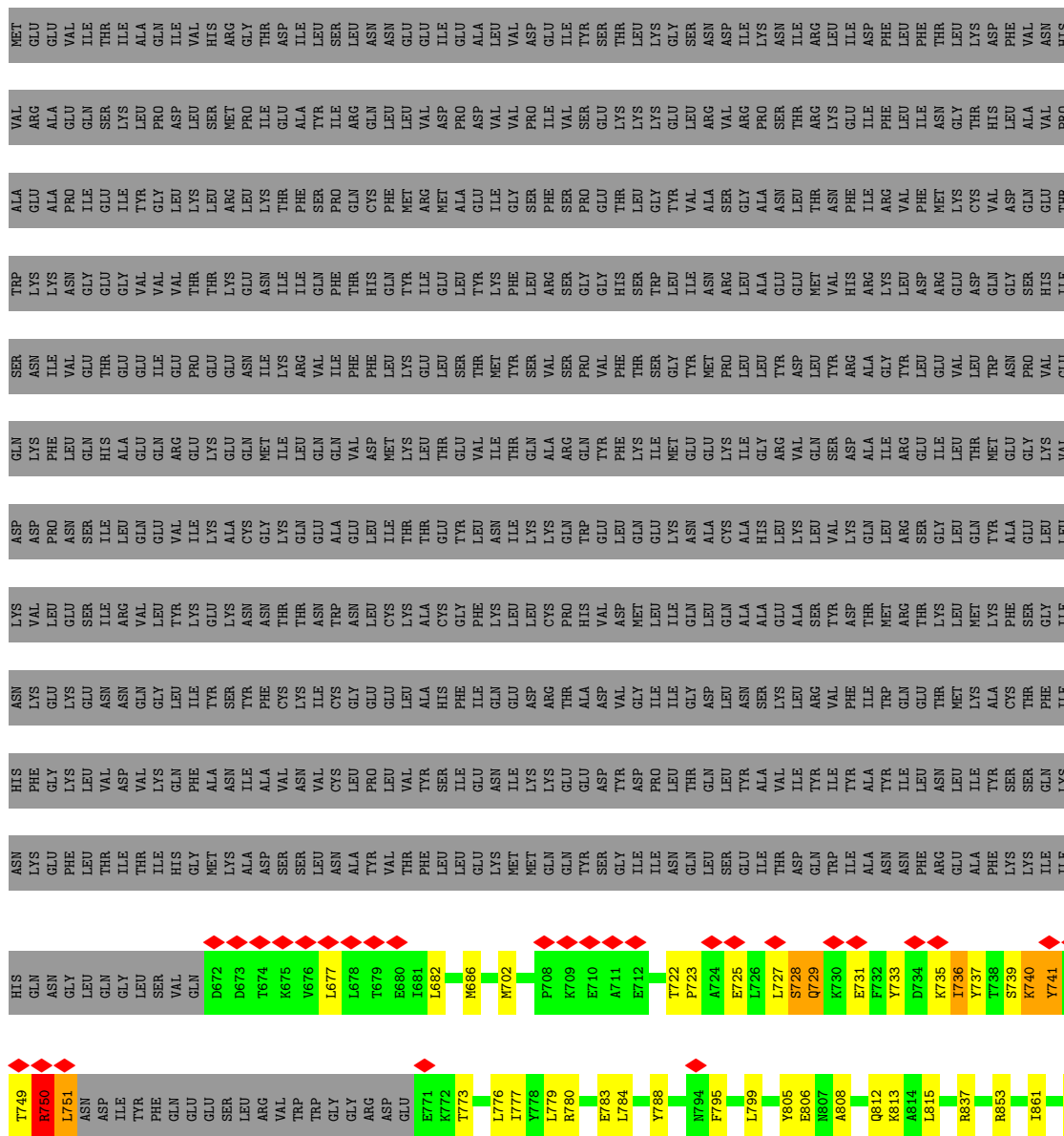
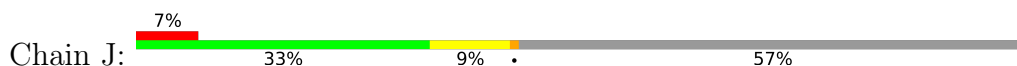


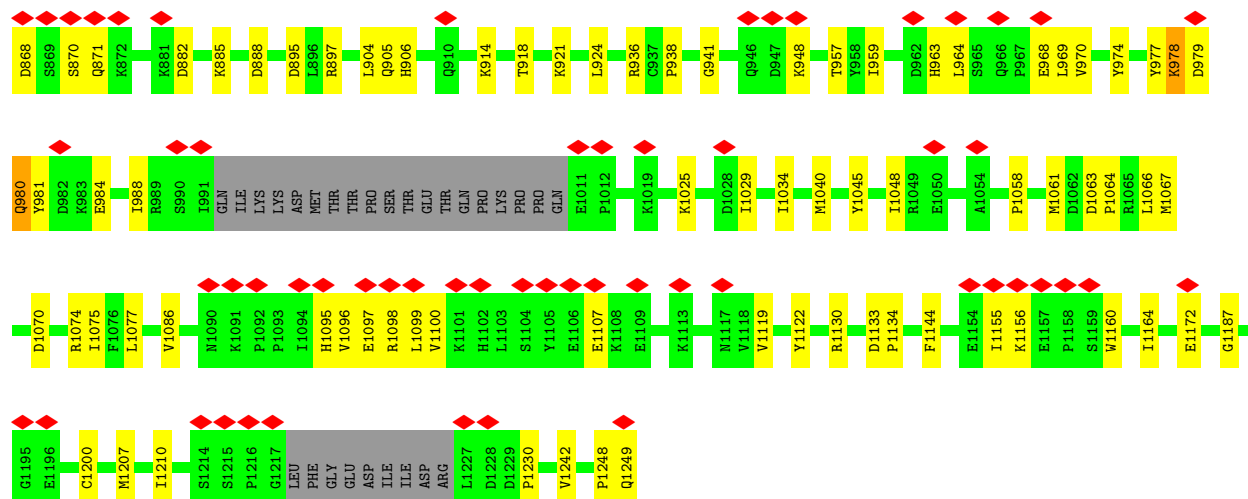
- Molecule 8: D339L

Chain F:  75% 76% 23%



- Molecule 9: M1249L





4 Experimental information

Property	Value	Source
EM reconstruction method	SINGLE PARTICLE	Depositor
Imposed symmetry	POINT, Not provided	
Number of particles used	475234	Depositor
Resolution determination method	FSC 0.143 CUT-OFF	Depositor
CTF correction method	PHASE FLIPPING AND AMPLITUDE CORRECTION	Depositor
Microscope	FEI TITAN KRIOS	Depositor
Voltage (kV)	300	Depositor
Electron dose ($e^-/\text{\AA}^2$)	40	Depositor
Minimum defocus (nm)	1000	Depositor
Maximum defocus (nm)	2500	Depositor
Magnification	Not provided	
Image detector	FEI FALCON IV (4k x 4k)	Depositor
Maximum map value	3.613	Depositor
Minimum map value	-2.599	Depositor
Average map value	0.001	Depositor
Map value standard deviation	0.122	Depositor
Recommended contour level	0.43	Depositor
Map size (Å)	290.88, 290.88, 290.88	wwPDB
Map dimensions	360, 360, 360	wwPDB
Map angles (°)	90.0, 90.0, 90.0	wwPDB
Pixel spacing (Å)	0.808, 0.808, 0.808	Depositor

5 Model quality [i](#)

5.1 Standard geometry [i](#)

Bond lengths and bond angles in the following residue types are not validated in this section: ZN, MG

The Z score for a bond length (or angle) is the number of standard deviations the observed value is removed from the expected value. A bond length (or angle) with $|Z| > 5$ is considered an outlier worth inspection. RMSZ is the root-mean-square of all Z scores of the bond lengths (or angles).

Mol	Chain	Bond lengths		Bond angles	
		RMSZ	# Z >5	RMSZ	# Z >5
1	A	0.21	1/11446 (0.0%)	0.33	1/15503 (0.0%)
2	E	0.18	0/798	0.36	0/1080
3	B	0.19	0/9722	0.33	0/13156
4	C	0.18	0/2976	0.34	0/4022
5	D	0.16	0/1707	0.35	0/2311
6	H	0.22	0/643	0.38	0/872
7	G	0.17	0/827	0.33	0/1109
8	F	0.12	0/2782	0.31	0/3767
9	J	0.31	1/4428 (0.0%)	0.46	3/6001 (0.0%)
All	All	0.21	2/35329 (0.0%)	0.35	4/47821 (0.0%)

All (2) bond length outliers are listed below:

Mol	Chain	Res	Type	Atoms	Z	Observed(Å)	Ideal(Å)
1	A	1074	ILE	C-O	-5.70	1.17	1.24
9	J	733	TYR	CA-C	-5.36	1.45	1.52

All (4) bond angle outliers are listed below:

Mol	Chain	Res	Type	Atoms	Z	Observed(°)	Ideal(°)
9	J	747	GLN	N-CA-C	-9.41	100.69	113.30
9	J	748	LEU	N-CA-C	-9.23	102.03	113.20
9	J	750	ARG	CB-CA-C	5.68	121.73	110.42
1	A	1075	VAL	N-CA-C	-5.32	106.62	111.67

There are no chirality outliers.

There are no planarity outliers.

5.2 Too-close contacts ⓘ

In the following table, the Non-H and H(model) columns list the number of non-hydrogen atoms and hydrogen atoms in the chain respectively. The H(added) column lists the number of hydrogen atoms added and optimized by MolProbity. The Clashes column lists the number of clashes within the asymmetric unit, whereas Symm-Clashes lists symmetry-related clashes.

Mol	Chain	Non-H	H(model)	H(added)	Clashes	Symm-Clashes
1	A	11227	0	11350	175	0
2	E	787	0	838	12	0
3	B	9530	0	9481	144	0
4	C	2914	0	2994	40	0
5	D	1668	0	1713	28	0
6	H	630	0	659	18	0
7	G	815	0	817	27	0
8	F	2727	0	2755	52	0
9	J	4324	0	4253	106	0
10	A	1	0	0	0	0
11	A	1	0	0	0	0
11	B	1	0	0	0	0
11	G	1	0	0	0	0
11	H	1	0	0	0	0
11	J	2	0	0	0	0
All	All	34629	0	34860	524	0

The all-atom clashscore is defined as the number of clashes found per 1000 atoms (including hydrogen atoms). The all-atom clashscore for this structure is 8.

All (524) close contacts within the same asymmetric unit are listed below, sorted by their clash magnitude.

Atom-1	Atom-2	Interatomic distance (Å)	Clash overlap (Å)
9:J:750:ARG:NH1	9:J:808:ALA:HB3	1.53	1.21
9:J:745:PHE:CD1	9:J:780:ARG:HD3	1.88	1.09
9:J:750:ARG:HH11	9:J:808:ALA:HB3	1.05	1.04
9:J:750:ARG:HH11	9:J:808:ALA:CB	1.70	1.02
9:J:750:ARG:NH1	9:J:808:ALA:CB	2.31	0.90
3:B:209:ARG:HE	3:B:212:THR:HG21	1.39	0.87
3:B:1182:ASN:ND2	3:B:1204:GLN:O	2.12	0.83
9:J:743:PRO:HB2	9:J:776:LEU:CD2	2.11	0.80
1:A:83:LEU:H	1:A:264:GLN:HE22	1.29	0.77
2:E:126:THR:HG22	2:E:128:GLU:H	1.50	0.76
1:A:1103:VAL:HG13	1:A:1109:TYR:HB3	1.67	0.76
9:J:750:ARG:HE	9:J:750:ARG:HA	1.51	0.76

Continued on next page...

Continued from previous page...

Atom-1	Atom-2	Interatomic distance (Å)	Clash overlap (Å)
3:B:97:GLU:OE1	3:B:129:ASN:ND2	2.19	0.75
5:D:17:ARG:NH2	5:D:172:VAL:O	2.19	0.74
1:A:515:THR:HG22	1:A:517:MET:H	1.50	0.74
7:G:95:VAL:HG12	7:G:101:MET:HG3	1.71	0.73
5:D:22:LEU:HD12	5:D:44:ASN:HB3	1.72	0.72
1:A:1189:SER:HB2	9:J:936:ARG:HG3	1.72	0.72
8:F:8:GLU:HG2	8:F:73:ARG:HG3	1.71	0.71
4:C:110:VAL:HB	4:C:134:ALA:HB3	1.74	0.69
3:B:792:THR:HG23	3:B:1038:THR:HA	1.74	0.69
8:F:81:LEU:HB3	8:F:139:VAL:HG11	1.74	0.69
1:A:904:ASP:HB3	1:A:1000:MET:HG3	1.74	0.69
1:A:1128:GLN:HB3	7:G:43:VAL:HG23	1.74	0.69
5:D:42:ARG:HD3	5:D:44:ASN:HD21	1.58	0.69
1:A:873:ILE:HD11	1:A:1000:MET:HE1	1.74	0.69
1:A:382:GLN:NE2	1:A:401:VAL:O	2.27	0.68
3:B:844:PRO:HG2	6:H:74:LEU:HD11	1.76	0.68
1:A:1098:LEU:HD13	1:A:1103:VAL:HG12	1.74	0.68
1:A:1439:ASN:HD22	2:E:94:MET:HE1	1.57	0.68
1:A:646:ASN:HB3	4:C:210:MET:HE2	1.75	0.67
3:B:203:ASP:OD1	3:B:525:ASN:ND2	2.27	0.67
8:F:14:ASP:HA	8:F:67:ARG:HG2	1.76	0.67
9:J:743:PRO:HB2	9:J:776:LEU:HD21	1.74	0.67
3:B:436:SER:O	3:B:474:THR:OG1	2.12	0.67
1:A:501:GLN:O	3:B:1031:HIS:NE2	2.28	0.67
1:A:420:GLN:NE2	3:B:1151:GLU:OE2	2.28	0.66
5:D:44:ASN:OD1	5:D:83:LYS:NZ	2.27	0.66
3:B:158:SER:HB3	3:B:478:LEU:HD23	1.76	0.66
4:C:6:GLN:HA	4:C:357:LEU:HD11	1.76	0.66
3:B:1120:TYR:HB2	3:B:1139:LYS:HD3	1.76	0.66
1:A:1178:LEU:HB2	1:A:1223:ILE:HB	1.77	0.66
7:G:21:ILE:HG12	7:G:31:GLN:HE22	1.60	0.66
3:B:411:ASP:OD1	3:B:538:ARG:NH2	2.30	0.65
8:F:195:LYS:HZ1	8:F:199:GLN:HB2	1.60	0.65
4:C:61:VAL:HA	4:C:65:GLU:HB2	1.77	0.65
9:J:745:PHE:CE2	9:J:780:ARG:HB2	2.32	0.65
8:F:211:SER:O	8:F:337:HIS:NE2	2.23	0.65
1:A:415:ALA:HB2	1:A:433:ILE:HD11	1.79	0.64
2:E:82:VAL:O	2:E:86:GLN:HG2	1.96	0.64
9:J:780:ARG:NH1	9:J:783:GLU:OE1	2.30	0.64
3:B:579:THR:HA	3:B:666:VAL:HG23	1.78	0.64
3:B:76:THR:H	3:B:79:ASP:HB2	1.63	0.64

Continued on next page...

Continued from previous page...

Atom-1	Atom-2	Interatomic distance (Å)	Clash overlap (Å)
7:G:22:PHE:HB2	7:G:30:VAL:HG12	1.79	0.63
1:A:1162:HIS:HB3	1:A:1165:LEU:HB2	1.80	0.63
8:F:331:GLU:HA	8:F:334:LYS:HE3	1.81	0.63
3:B:233:ILE:HG12	3:B:245:GLN:HB2	1.78	0.63
8:F:197:PHE:HE1	8:F:218:LEU:HD23	1.63	0.62
3:B:1059:ASP:OD2	3:B:1061:THR:OG1	2.15	0.62
3:B:1239:PHE:HB3	8:F:53:GLN:HG2	1.80	0.62
1:A:1094:MET:HE1	1:A:1299:ASN:H	1.64	0.61
5:D:53:VAL:HG22	5:D:87:GLU:HB3	1.81	0.61
9:J:1086:VAL:HG21	9:J:1100:VAL:HG21	1.81	0.61
1:A:150:ASP:OD2	1:A:153:THR:OG1	2.18	0.61
3:B:723:LEU:HD13	6:H:44:ASP:HA	1.81	0.61
8:F:297:LEU:O	8:F:301:ILE:HG13	1.99	0.61
1:A:1076:ARG:NH2	1:A:1317:SER:O	2.34	0.61
1:A:1099:LYS:O	1:A:1099:LYS:NZ	2.32	0.60
1:A:1136:TYR:CZ	1:A:1167:PRO:HG2	2.35	0.60
3:B:650:THR:HB	3:B:663:TRP:HB2	1.82	0.60
9:J:750:ARG:HA	9:J:750:ARG:NE	2.13	0.60
3:B:209:ARG:NE	3:B:212:THR:HG21	2.14	0.60
3:B:877:PHE:O	3:B:1110:ARG:NH1	2.34	0.60
3:B:961:GLU:OE2	3:B:988:ARG:NH2	2.29	0.60
1:A:1410:ILE:HG12	3:B:1156:THR:HG21	1.84	0.60
2:E:122:CYS:SG	2:E:131:LYS:NZ	2.70	0.60
1:A:656:MET:HE1	3:B:1042:MET:HG3	1.83	0.60
8:F:110:VAL:HG13	8:F:148:ALA:HB3	1.84	0.60
3:B:79:ASP:OD1	3:B:82:ARG:NH2	2.35	0.59
3:B:877:PHE:HB3	3:B:1110:ARG:HD2	1.84	0.59
7:G:20:ILE:HD12	7:G:37:LEU:HD23	1.84	0.59
5:D:180:ASP:HB2	5:D:200:ILE:HD12	1.85	0.59
8:F:292:MET:HE3	8:F:296:LEU:HD12	1.83	0.59
9:J:959:ILE:HG23	9:J:970:VAL:HG22	1.85	0.59
3:B:370:LYS:HG3	3:B:371:ILE:HG12	1.84	0.59
8:F:171:THR:OG1	8:F:174:GLN:OE1	2.19	0.59
9:J:1061:MET:O	9:J:1130:ARG:NH1	2.35	0.59
1:A:382:GLN:O	1:A:385:GLN:NE2	2.36	0.59
4:C:180:VAL:HG22	4:C:222:CYS:HB3	1.85	0.58
3:B:71:ASP:OD2	3:B:82:ARG:NE	2.34	0.58
3:B:249:ARG:NH1	3:B:259:GLU:OE1	2.28	0.58
1:A:683:ARG:HD3	9:J:924:LEU:HD21	1.84	0.58
9:J:1066:LEU:HD11	9:J:1134:PRO:HB3	1.85	0.58
3:B:960:ASP:OD1	3:B:960:ASP:N	2.37	0.58

Continued on next page...

Continued from previous page...

Atom-1	Atom-2	Interatomic distance (Å)	Clash overlap (Å)
1:A:31:ILE:HD12	1:A:33:ASN:HB2	1.86	0.58
3:B:605:LYS:O	3:B:609:ARG:HG3	2.03	0.57
3:B:681:GLU:CD	3:B:681:GLU:H	2.12	0.57
8:F:244:TYR:HA	8:F:247:LEU:HD12	1.86	0.57
9:J:745:PHE:O	9:J:748:LEU:HB2	2.05	0.57
9:J:748:LEU:HB3	9:J:805:TYR:CD2	2.39	0.57
1:A:1434:LYS:NZ	1:A:1438:GLU:OE2	2.38	0.57
1:A:332:ASP:OD2	3:B:859:TYR:OH	2.23	0.57
3:B:889:LEU:HD23	3:B:936:LYS:HE3	1.87	0.57
1:A:663:HIS:CE1	9:J:837:ARG:HG2	2.40	0.57
1:A:683:ARG:HD3	9:J:924:LEU:HD11	1.87	0.56
6:H:14:ILE:HD11	6:H:66:CYS:HB3	1.87	0.56
1:A:208:ILE:HD11	3:B:1221:HIS:HB2	1.87	0.56
3:B:97:GLU:HB2	3:B:127:PRO:HG2	1.87	0.56
9:J:750:ARG:HH12	9:J:808:ALA:HB3	1.61	0.56
9:J:745:PHE:CD2	9:J:780:ARG:HB2	2.41	0.56
1:A:993:ARG:HD2	5:D:193:HIS:CD2	2.40	0.56
9:J:727:LEU:O	9:J:728:SER:C	2.48	0.56
9:J:853:ARG:HH12	9:J:964:LEU:HD13	1.69	0.56
3:B:207:ASN:HD22	3:B:208:ILE:H	1.52	0.56
1:A:130:GLU:HG3	1:A:143:LYS:HB2	1.88	0.56
1:A:320:TRP:CE2	3:B:1135:PRO:HG3	2.41	0.56
3:B:135:ILE:HG12	3:B:149:ARG:HG2	1.88	0.55
3:B:118:ARG:NH1	3:B:199:GLU:OE2	2.39	0.55
8:F:226:PRO:HD3	8:F:264:LEU:HD21	1.88	0.55
9:J:743:PRO:HG2	9:J:745:PHE:CE2	2.41	0.55
4:C:257:TYR:CE1	4:C:336:LEU:HB3	2.41	0.55
8:F:267:SER:HB2	8:F:269:LEU:HD22	1.87	0.55
1:A:815:LYS:HG2	9:J:1248:PRO:HB3	1.89	0.55
1:A:1106:ASN:HD21	9:J:957:THR:HG21	1.72	0.55
2:E:90:ASN:ND2	8:F:15:ASP:OD2	2.40	0.55
3:B:218:HIS:ND1	3:B:226:GLU:OE2	2.40	0.55
5:D:42:ARG:HH11	5:D:44:ASN:HD21	1.55	0.55
4:C:253:ILE:HD13	4:C:294:LEU:HD11	1.88	0.54
1:A:1103:VAL:HG22	1:A:1109:TYR:HD1	1.71	0.54
9:J:984:GLU:O	9:J:988:ILE:HD12	2.07	0.54
1:A:442:SER:HB3	3:B:1119:ARG:HD3	1.90	0.54
1:A:748:ILE:HD11	3:B:1037:MET:HG2	1.90	0.54
2:E:122:CYS:HA	2:E:133:VAL:HG12	1.89	0.54
3:B:196:ARG:HH12	3:B:484:GLN:NE2	2.05	0.54
3:B:236:PRO:HA	3:B:375:HIS:HA	1.89	0.54

Continued on next page...

Continued from previous page...

Atom-1	Atom-2	Interatomic distance (Å)	Clash overlap (Å)
3:B:513:ASN:HA	3:B:811:TYR:HA	1.90	0.54
4:C:28:LYS:NZ	6:H:23:LYS:HD3	2.22	0.54
9:J:963:HIS:HB3	9:J:970:VAL:HG11	1.89	0.54
1:A:533:THR:HB	1:A:642:ASN:HD21	1.72	0.54
3:B:279:PHE:HB2	3:B:387:LEU:HD11	1.89	0.54
9:J:1133:ASP:OD1	9:J:1133:ASP:N	2.41	0.54
6:H:61:PRO:HB2	6:H:63:ARG:HG3	1.90	0.54
1:A:300:MET:HE2	1:A:300:MET:HA	1.89	0.53
1:A:1379:PRO:O	1:A:1385:ARG:NH1	2.42	0.53
9:J:743:PRO:HB2	9:J:776:LEU:HD23	1.91	0.53
1:A:83:LEU:HD22	1:A:91:ILE:HD13	1.91	0.53
1:A:530:LEU:HD12	1:A:555:VAL:HG11	1.90	0.53
9:J:1040:MET:HG2	9:J:1048:ILE:HG21	1.91	0.53
3:B:994:ASP:OD2	3:B:1110:ARG:NH2	2.41	0.53
1:A:425:ARG:HA	3:B:1154:VAL:HG13	1.90	0.52
1:A:1137:SER:HA	1:A:1142:ASN:HD22	1.74	0.52
5:D:103:LEU:O	5:D:107:VAL:HG13	2.09	0.52
8:F:259:ARG:NH1	8:F:299:GLU:OE1	2.42	0.52
1:A:954:GLU:CD	1:A:954:GLU:H	2.17	0.52
9:J:1095:HIS:CD2	9:J:1096:VAL:HG23	2.45	0.52
3:B:402:MET:HG2	3:B:404:VAL:HG23	1.91	0.52
4:C:116:LEU:HD12	9:J:702:MET:HG2	1.91	0.52
8:F:200:ILE:HD12	8:F:200:ILE:H	1.75	0.52
9:J:745:PHE:CE1	9:J:780:ARG:HD3	2.42	0.52
3:B:432:ILE:HG22	3:B:478:LEU:HD12	1.91	0.52
3:B:957:TYR:CZ	3:B:959:PHE:HB2	2.45	0.52
4:C:74:LYS:HB2	4:C:162:ASP:HB3	1.91	0.52
8:F:95:ASN:ND2	8:F:124:ALA:O	2.43	0.52
5:D:1:MET:O	5:D:1:MET:HG2	2.10	0.52
5:D:28:TYR:O	5:D:32:VAL:HG23	2.09	0.52
9:J:1070:ASP:OD2	9:J:1074:ARG:NH2	2.40	0.52
8:F:165:HIS:CD2	8:F:167:GLN:HE21	2.27	0.52
3:B:266:SER:C	3:B:267:LYS:HG3	2.34	0.52
8:F:248:LYS:HE2	8:F:250:LYS:HE3	1.91	0.51
3:B:1197:LYS:HE2	3:B:1199:MET:HG2	1.92	0.51
9:J:888:ASP:OD1	9:J:888:ASP:N	2.44	0.51
5:D:100:LYS:HB2	5:D:100:LYS:NZ	2.24	0.51
8:F:237:CYS:SG	8:F:238:ASN:N	2.84	0.51
3:B:18:ASN:ND2	3:B:712:THR:O	2.43	0.51
3:B:874:ARG:HG2	4:C:99:PHE:CE1	2.46	0.51
3:B:1122:VAL:HG13	3:B:1123:ALA:H	1.75	0.51

Continued on next page...

Continued from previous page...

Atom-1	Atom-2	Interatomic distance (Å)	Clash overlap (Å)
8:F:43:SER:OG	8:F:44:PHE:N	2.42	0.51
9:J:1067:MET:HE2	9:J:1067:MET:HA	1.92	0.51
1:A:1129:TRP:HB2	1:A:1176:ILE:HD11	1.92	0.51
8:F:220:LEU:O	8:F:223:TRP:NE1	2.44	0.51
1:A:1383:LEU:H	1:A:1405:ASN:ND2	2.09	0.51
1:A:34:LEU:HD13	1:A:46:TYR:HE2	1.75	0.51
1:A:714:ARG:NH1	9:J:905:GLN:HE22	2.07	0.51
1:A:1060:SER:HB3	1:A:1063:ARG:NH2	2.26	0.51
3:B:971:PRO:HG2	3:B:979:PHE:CZ	2.45	0.51
3:B:1012:THR:HG23	3:B:1023:GLN:HE22	1.76	0.51
4:C:28:LYS:HZ1	6:H:23:LYS:HD3	1.74	0.51
8:F:81:LEU:HD21	8:F:87:ILE:HD11	1.93	0.51
1:A:431:HIS:NE2	1:A:454:TYR:OH	2.34	0.51
1:A:834:GLN:HE22	1:A:1411:ALA:HB2	1.76	0.51
3:B:1013:SER:HB2	4:C:60:ARG:HG2	1.92	0.51
4:C:272:MET:HE2	4:C:276:LYS:HD2	1.93	0.51
3:B:26:MET:HE2	3:B:755:ILE:HD13	1.92	0.51
8:F:262:ASN:OD1	8:F:262:ASN:N	2.44	0.51
1:A:1383:LEU:H	1:A:1405:ASN:HD21	1.59	0.50
3:B:225:ASN:O	3:B:252:THR:OG1	2.28	0.50
5:D:108:GLU:OE1	5:D:109:GLN:NE2	2.45	0.50
1:A:896:GLU:OE1	1:A:961:TYR:OH	2.28	0.50
3:B:234:SER:OG	3:B:375:HIS:ND1	2.35	0.50
3:B:885:GLU:HB3	3:B:982:MET:HB3	1.93	0.50
6:H:21:PHE:HB2	6:H:58:LEU:HD11	1.93	0.50
8:F:31:LEU:HD11	8:F:72:VAL:HG11	1.93	0.50
1:A:265:GLN:NE2	1:A:269:ASN:OD1	2.41	0.50
1:A:1151:ASP:OD2	1:A:1177:ARG:NE	2.32	0.50
9:J:938:PRO:HB3	9:J:980:GLN:HE22	1.77	0.50
1:A:168:GLN:HE22	1:A:245:GLN:HA	1.77	0.50
3:B:175:SER:HB2	9:J:806:GLU:OE2	2.11	0.50
3:B:507:GLN:HE22	3:B:520:ALA:HB1	1.76	0.50
1:A:534:THR:HG22	1:A:638:GLN:HB2	1.94	0.50
9:J:748:LEU:HD21	9:J:777:ILE:CD1	2.42	0.50
9:J:895:ASP:HB3	9:J:904:LEU:HD22	1.93	0.50
1:A:210:PRO:O	1:A:224:HIS:ND1	2.44	0.50
1:A:723:ILE:HB	1:A:728:ASN:HD22	1.76	0.50
1:A:1124:ARG:NH1	1:A:1188:LYS:HE3	2.27	0.50
1:A:1129:TRP:HB3	1:A:1178:LEU:HD23	1.94	0.50
1:A:380:TYR:HB3	1:A:404:ILE:HB	1.94	0.50
1:A:591:THR:HA	1:A:601:GLY:HA3	1.93	0.50

Continued on next page...

Continued from previous page...

Atom-1	Atom-2	Interatomic distance (Å)	Clash overlap (Å)
9:J:882:ASP:HA	9:J:885:LYS:HG3	1.93	0.50
1:A:499:GLN:NE2	1:A:617:TYR:OH	2.37	0.50
5:D:204:LYS:HG3	5:D:205:ILE:HG12	1.92	0.50
1:A:1096:LEU:HB3	1:A:1309:ILE:HD12	1.94	0.49
5:D:96:VAL:HA	5:D:99:LYS:HG3	1.93	0.49
6:H:17:TYR:HB3	6:H:58:LEU:HD22	1.95	0.49
1:A:491:LYS:O	1:A:1349:ASN:N	2.42	0.49
5:D:52:ILE:HG21	5:D:83:LYS:HE2	1.94	0.49
7:G:13:ARG:HG3	7:G:22:PHE:CE1	2.47	0.49
1:A:981:GLU:O	1:A:984:GLN:NE2	2.45	0.49
3:B:796:ARG:NH1	9:J:1249:GLN:O	2.43	0.49
1:A:1196:ILE:HD11	1:A:1223:ILE:HD12	1.95	0.49
1:A:1072:SER:O	1:A:1073:GLY:C	2.54	0.49
3:B:228:ILE:HG22	3:B:250:TYR:HB3	1.94	0.49
3:B:412:SER:OG	3:B:414:ARG:HG2	2.13	0.49
3:B:815:TRP:CG	3:B:816:PRO:HD3	2.48	0.49
1:A:766:PHE:O	1:A:770:ARG:HB2	2.13	0.49
3:B:369:ASP:O	3:B:386:LYS:NZ	2.45	0.49
8:F:266:SER:HB2	8:F:304:LEU:HD23	1.95	0.49
1:A:675:LEU:O	1:A:679:GLU:HG2	2.13	0.48
1:A:1136:TYR:CE2	1:A:1167:PRO:HG2	2.48	0.48
3:B:723:LEU:HB3	6:H:36:THR:HG23	1.94	0.48
1:A:49:ARG:O	1:A:61:THR:OG1	2.28	0.48
2:E:101:SER:HB3	2:E:104:ASP:OD2	2.12	0.48
3:B:208:ILE:HD11	3:B:233:ILE:HD12	1.95	0.48
1:A:833:LEU:HG	1:A:1359:LEU:HD22	1.96	0.48
8:F:91:LYS:HB2	8:F:105:LEU:HD11	1.95	0.48
9:J:918:THR:HA	9:J:921:LYS:HE3	1.95	0.48
9:J:808:ALA:O	9:J:812:GLN:HG2	2.14	0.48
1:A:1092:SER:HB2	1:A:1298:THR:HG23	1.95	0.48
9:J:749:THR:O	9:J:751:LEU:N	2.40	0.48
9:J:788:TYR:HB2	9:J:795:PHE:CZ	2.48	0.48
3:B:363:ARG:NH2	9:J:1200:CYS:SG	2.86	0.48
3:B:644:VAL:HG12	3:B:645:VAL:HG23	1.96	0.48
1:A:777:ARG:NH1	7:G:63:ASP:OD2	2.40	0.48
4:C:124:THR:OG1	6:H:77:ARG:NH1	2.46	0.48
4:C:152:LEU:HD21	4:C:158:LEU:HB2	1.96	0.48
3:B:196:ARG:HH12	3:B:484:GLN:HE21	1.62	0.48
9:J:740:LYS:HA	9:J:740:LYS:HD3	1.57	0.48
9:J:748:LEU:C	9:J:750:ARG:H	2.22	0.48
1:A:1077:PRO:HG3	1:A:1342:VAL:HG11	1.96	0.47

Continued on next page...

Continued from previous page...

Atom-1	Atom-2	Interatomic distance (Å)	Clash overlap (Å)
1:A:1104:GLU:OE1	1:A:1291:TYR:N	2.43	0.47
3:B:830:GLU:HG2	6:H:73:THR:HA	1.96	0.47
9:J:868:ASP:OD2	9:J:870:SER:OG	2.21	0.47
1:A:867:THR:HG23	1:A:927:VAL:HG13	1.96	0.47
1:A:1122:PHE:HB2	1:A:1259:ILE:HD11	1.95	0.47
3:B:522:ARG:NH2	3:B:572:ALA:O	2.47	0.47
3:B:404:VAL:O	7:G:52:LYS:NZ	2.29	0.47
1:A:1439:ASN:ND2	2:E:94:MET:HE1	2.28	0.47
4:C:92:PHE:O	4:C:96:ARG:HG2	2.15	0.47
1:A:367:LEU:O	1:A:371:ARG:NH2	2.47	0.47
1:A:561:ARG:NH1	1:A:597:GLU:OE2	2.48	0.47
5:D:102:ILE:O	5:D:106:ILE:HG12	2.14	0.47
9:J:677:LEU:HD22	9:J:723:PRO:HB3	1.96	0.47
1:A:1189:SER:OG	9:J:941:GLY:O	2.24	0.47
3:B:820:ASP:HB3	3:B:823:ARG:HG3	1.96	0.47
3:B:881:PHE:HB3	3:B:986:TYR:HB2	1.96	0.47
3:B:1120:TYR:OH	3:B:1143:GLY:O	2.23	0.47
4:C:257:TYR:HE2	4:C:281:ILE:HG12	1.79	0.47
7:G:6:ALA:HA	9:J:1119:VAL:HG21	1.96	0.47
7:G:75:ASN:HD22	7:G:100:TYR:HB2	1.79	0.47
1:A:422:SER:HB3	3:B:1154:VAL:HG21	1.97	0.47
3:B:790:ASN:OD1	3:B:790:ASN:N	2.46	0.47
3:B:858:GLY:HA2	3:B:861:GLN:HE21	1.79	0.47
3:B:1197:LYS:HB2	3:B:1197:LYS:HE3	1.60	0.47
9:J:1099:LEU:O	9:J:1164:ILE:HD11	2.15	0.47
1:A:557:SER:O	1:A:561:ARG:HG3	2.15	0.47
1:A:1339:ILE:O	1:A:1343:MET:HG2	2.15	0.47
4:C:244:ARG:HG3	4:C:351:GLU:OE2	2.15	0.47
1:A:650:THR:OG1	3:B:853:TYR:O	2.31	0.47
1:A:1152:VAL:HA	1:A:1155:MET:SD	2.55	0.47
3:B:204:LEU:HB3	3:B:418:VAL:HG13	1.97	0.47
9:J:882:ASP:OD1	9:J:882:ASP:N	2.48	0.47
1:A:1129:TRP:CE2	7:G:42:LYS:HB3	2.50	0.47
9:J:1155:ILE:HD12	9:J:1156:LYS:H	1.80	0.46
1:A:693:ILE:HD11	9:J:936:ARG:HD2	1.97	0.46
1:A:815:LYS:HE3	9:J:1248:PRO:HA	1.98	0.46
1:A:971:LEU:HD23	1:A:999:ARG:HG3	1.97	0.46
3:B:265:PHE:HZ	3:B:364:GLN:HE22	1.63	0.46
3:B:820:ASP:CB	3:B:823:ARG:HG3	2.44	0.46
6:H:69:HIS:O	6:H:73:THR:OG1	2.21	0.46
9:J:968:GLU:HG2	9:J:969:LEU:N	2.30	0.46

Continued on next page...

Continued from previous page...

Atom-1	Atom-2	Interatomic distance (Å)	Clash overlap (Å)
1:A:1419:VAL:O	8:F:61:ARG:NH2	2.48	0.46
1:A:1208:ILE:HG12	1:A:1225:ILE:HG23	1.96	0.46
4:C:82:ASP:HB3	4:C:159:ILE:HG13	1.98	0.46
4:C:278:LYS:HE2	4:C:280:ILE:HD11	1.96	0.46
5:D:27:PRO:HD2	5:D:30:LYS:HD2	1.96	0.46
9:J:1077:LEU:HD13	9:J:1119:VAL:HG23	1.98	0.46
1:A:269:ASN:O	1:A:273:ASP:HB2	2.16	0.46
8:F:236:PRO:HB2	8:F:269:LEU:HB2	1.96	0.46
3:B:355:ASN:OD1	9:J:1187:GLY:N	2.34	0.46
3:B:656:MET:HE1	7:G:53:TYR:CD1	2.50	0.46
4:C:305:ILE:HD11	4:C:323:ILE:HG23	1.97	0.46
9:J:974:TYR:CE1	9:J:978:LYS:HD3	2.51	0.46
1:A:1203:HIS:HE2	1:A:1257:SER:HB3	1.80	0.46
7:G:11:MET:HG2	7:G:24:CYS:HB2	1.98	0.46
8:F:231:MET:SD	8:F:262:ASN:ND2	2.85	0.46
1:A:34:LEU:HD13	1:A:46:TYR:CE2	2.52	0.45
1:A:821:SER:HB3	1:A:1074:ILE:CD1	2.46	0.45
3:B:1046:THR:HG23	3:B:1075:LEU:HD11	1.97	0.45
9:J:948:LYS:O	9:J:957:THR:N	2.48	0.45
1:A:7:GLU:OE1	8:F:61:ARG:NH1	2.50	0.45
1:A:458:PHE:HB2	3:B:862:GLU:O	2.17	0.45
3:B:891:SER:O	3:B:893:ILE:HD12	2.17	0.45
4:C:127:SER:OG	4:C:147:PHE:HB2	2.17	0.45
7:G:21:ILE:HG12	7:G:31:GLN:NE2	2.29	0.45
9:J:741:TYR:CE2	9:J:779:LEU:HD11	2.50	0.45
1:A:152:PHE:CD1	1:A:264:GLN:HG2	2.52	0.45
3:B:328:ASN:HA	9:J:1075:ILE:HD11	1.98	0.45
9:J:1097:GLU:HG3	9:J:1098:ARG:N	2.32	0.45
3:B:59:VAL:HB	3:B:94:VAL:HG21	1.98	0.45
8:F:90:VAL:HG12	8:F:130:VAL:O	2.17	0.45
9:J:914:LYS:HE2	9:J:914:LYS:HB3	1.80	0.45
1:A:1192:LEU:HD11	1:A:1223:ILE:HD11	1.99	0.45
3:B:803:GLN:OE1	3:B:997:SER:OG	2.25	0.45
8:F:108:GLU:O	8:F:110:VAL:HG23	2.16	0.45
9:J:977:TYR:O	9:J:981:TYR:HB2	2.17	0.45
1:A:501:GLN:O	3:B:1031:HIS:CE1	2.69	0.45
3:B:443:ASN:O	3:B:447:GLU:HG2	2.16	0.45
3:B:968:VAL:HG22	3:B:982:MET:HE2	1.99	0.45
9:J:748:LEU:O	9:J:805:TYR:CD1	2.70	0.45
1:A:1070:ASN:HD22	1:A:1090:GLN:NE2	2.15	0.45
3:B:213:LEU:HD21	3:B:397:ILE:HG13	1.99	0.45

Continued on next page...

Continued from previous page...

Atom-1	Atom-2	Interatomic distance (Å)	Clash overlap (Å)
8:F:170:LEU:HD21	8:F:178:LEU:HD12	1.98	0.45
8:F:206:LEU:HD22	8:F:327:TRP:CE3	2.52	0.45
1:A:1075:VAL:O	1:A:1079:GLU:HG3	2.17	0.45
3:B:818:ARG:O	3:B:983:ARG:NH1	2.47	0.45
4:C:70:MET:HE2	4:C:166:LYS:HD3	1.98	0.45
4:C:240:LYS:HB3	4:C:244:ARG:NH1	2.31	0.45
3:B:255:ALA:HB2	3:B:315:VAL:HG11	1.99	0.44
3:B:364:GLN:HE21	3:B:368:LEU:HG	1.81	0.44
9:J:749:THR:O	9:J:751:LEU:HD22	2.17	0.44
9:J:978:LYS:HD2	9:J:978:LYS:HA	1.24	0.44
1:A:875:LEU:O	1:A:909:ARG:NH2	2.50	0.44
3:B:573:ILE:HG23	3:B:574:THR:HG23	1.98	0.44
4:C:332:LEU:O	4:C:336:LEU:HG	2.17	0.44
8:F:46:LEU:HD11	8:F:108:GLU:HG2	1.98	0.44
1:A:252:ILE:HD13	1:A:257:ASP:HB2	1.99	0.44
1:A:672:GLU:OE1	1:A:714:ARG:NH2	2.49	0.44
8:F:90:VAL:HA	8:F:104:SER:HA	1.98	0.44
9:J:749:THR:HA	9:J:805:TYR:CE1	2.51	0.44
9:J:895:ASP:OD2	9:J:906:HIS:ND1	2.50	0.44
3:B:536:THR:HA	9:J:1230:PRO:HG3	1.99	0.44
4:C:309:GLY:O	4:C:321:LEU:HD12	2.18	0.44
6:H:75:ASP:HB3	6:H:78:LYS:HG3	2.00	0.44
1:A:821:SER:HB3	1:A:1074:ILE:HD11	2.00	0.44
5:D:42:ARG:HD3	5:D:44:ASN:ND2	2.30	0.44
1:A:321:SER:N	3:B:1123:ALA:O	2.46	0.44
1:A:1122:PHE:O	1:A:1126:ILE:HG12	2.17	0.44
1:A:1412:ALA:HB3	1:A:1413:PRO:HD3	2.00	0.44
3:B:598:GLN:HE21	3:B:598:GLN:HB3	1.56	0.44
3:B:264:LYS:HD3	3:B:367:ILE:HG12	2.00	0.44
3:B:606:ASP:O	3:B:610:LYS:HB2	2.17	0.44
4:C:13:PHE:CE2	6:H:61:PRO:HG3	2.53	0.44
5:D:26:VAL:HB	5:D:30:LYS:HD2	2.00	0.44
8:F:119:SER:OG	8:F:120:GLN:OE1	2.27	0.44
8:F:163:VAL:HG22	8:F:258:ALA:HB2	2.00	0.44
9:J:1172:GLU:OE1	9:J:1172:GLU:HA	2.16	0.44
1:A:303:LEU:HD23	1:A:1391:PRO:HB2	2.00	0.43
1:A:843:ARG:NH1	5:D:154:GLU:OE1	2.45	0.43
1:A:1111:GLN:HA	1:A:1270:VAL:HG21	2.00	0.43
6:H:22:ASP:O	6:H:25:ARG:HB2	2.18	0.43
9:J:727:LEU:O	9:J:729:GLN:N	2.50	0.43
1:A:253:PRO:HD2	1:A:256:ILE:HD12	2.00	0.43

Continued on next page...

Continued from previous page...

Atom-1	Atom-2	Interatomic distance (Å)	Clash overlap (Å)
1:A:1419:VAL:HG13	8:F:61:ARG:HH21	1.83	0.43
3:B:441:ILE:HD11	3:B:470:LEU:HD11	2.01	0.43
7:G:70:LYS:HE2	7:G:79:ASP:OD2	2.18	0.43
8:F:276:ASN:HD21	8:F:284:PRO:HG2	1.82	0.43
9:J:1045:TYR:HA	9:J:1048:ILE:HD12	2.00	0.43
9:J:1122:TYR:HB2	9:J:1144:PHE:CZ	2.53	0.43
1:A:140:VAL:O	1:A:158:GLN:NE2	2.49	0.43
1:A:680:ILE:HD13	1:A:704:LEU:HB3	2.00	0.43
3:B:639:ARG:NH1	3:B:649:THR:O	2.45	0.43
3:B:900:ASP:OD1	3:B:900:ASP:N	2.41	0.43
8:F:276:ASN:ND2	8:F:284:PRO:HG2	2.34	0.43
1:A:1135:THR:OG1	1:A:1136:TYR:N	2.52	0.43
8:F:5:LYS:HD3	8:F:7:PHE:CZ	2.53	0.43
9:J:722:THR:OG1	9:J:725:GLU:HG2	2.19	0.43
1:A:15:ILE:HG23	1:A:84:GLN:HE22	1.83	0.43
1:A:1174:TRP:HZ3	7:G:39:VAL:HG21	1.83	0.43
2:E:76:ALA:HB1	2:E:146:LEU:HD11	2.00	0.43
3:B:227:ILE:HD11	3:B:252:THR:HA	2.01	0.43
9:J:747:GLN:C	9:J:749:THR:N	2.76	0.43
1:A:1125:LEU:HD21	1:A:1190:ILE:HD12	2.00	0.43
3:B:310:GLU:HG3	7:G:10:CYS:SG	2.58	0.43
1:A:499:GLN:HB3	1:A:503:SER:HB2	2.00	0.43
1:A:1097:ARG:NH1	1:A:1290:ILE:HG21	2.34	0.43
1:A:1322:THR:HG23	1:A:1326:TYR:HD2	1.84	0.43
3:B:33:ALA:HA	3:B:729:LEU:HD22	1.99	0.43
1:A:519:LYS:HE3	1:A:519:LYS:HB3	1.60	0.43
3:B:65:VAL:HG11	3:B:442:ILE:HD11	2.01	0.43
3:B:234:SER:HB3	3:B:374:PRO:HD2	2.00	0.43
9:J:1058:PRO:HB3	9:J:1063:ASP:OD2	2.19	0.43
3:B:39:LEU:HD11	3:B:841:TYR:HB3	2.01	0.43
4:C:310:TYR:O	4:C:310:TYR:CG	2.72	0.43
9:J:866:ALA:HB1	9:J:871:GLN:HB3	2.00	0.43
9:J:1107:GLU:HB3	9:J:1160:TRP:CZ3	2.54	0.43
1:A:921:SER:O	1:A:921:SER:OG	2.35	0.42
3:B:226:GLU:HA	3:B:251:MET:HA	2.01	0.42
3:B:431:ALA:HB1	9:J:1210:ILE:HG23	2.01	0.42
3:B:956:MET:HE2	3:B:956:MET:HB3	1.89	0.42
7:G:63:ASP:HB3	7:G:66:ASN:ND2	2.34	0.42
7:G:72:ASP:OD2	7:G:72:ASP:N	2.52	0.42
1:A:697:THR:HB	7:G:89:GLN:HA	2.00	0.42
1:A:911:ILE:HD13	5:D:192:MET:O	2.19	0.42

Continued on next page...

Continued from previous page...

Atom-1	Atom-2	Interatomic distance (Å)	Clash overlap (Å)
1:A:1051:GLU:HB3	1:A:1052:PRO:HD3	2.01	0.42
3:B:33:ALA:O	3:B:37:THR:HG23	2.19	0.42
5:D:133:VAL:HB	5:D:136:ILE:HD12	2.01	0.42
8:F:323:HIS:O	8:F:327:TRP:HD1	2.01	0.42
1:A:145:VAL:CG1	1:A:155:TRP:HB2	2.49	0.42
1:A:920:PHE:CE1	1:A:1095:LEU:HB2	2.54	0.42
1:A:1122:PHE:CZ	1:A:1178:LEU:HD13	2.54	0.42
4:C:178:LEU:O	4:C:224:PRO:HD3	2.19	0.42
8:F:265:LYS:HB3	8:F:303:TYR:CG	2.55	0.42
9:J:861:ILE:HB	9:J:897:ARG:HB3	2.01	0.42
9:J:963:HIS:HA	9:J:970:VAL:HG21	2.01	0.42
9:J:736:ILE:O	9:J:737:TYR:C	2.63	0.42
3:B:1010:LEU:HB2	3:B:1015:MET:SD	2.59	0.42
6:H:12:PHE:CD1	6:H:13:PRO:HD2	2.55	0.42
1:A:28:GLU:OE1	1:A:77:GLN:HG3	2.20	0.42
3:B:326:GLU:HG3	3:B:328:ASN:H	1.84	0.42
1:A:100:LEU:HD22	1:A:173:ILE:HD13	2.01	0.42
1:A:1266:LYS:HD2	1:A:1266:LYS:N	2.34	0.42
3:B:296:GLU:OE1	3:B:296:GLU:HA	2.20	0.42
4:C:183:HIS:HD2	4:C:218:ARG:HG2	1.83	0.42
7:G:13:ARG:HH11	7:G:13:ARG:HB3	1.84	0.42
9:J:746:THR:O	9:J:746:THR:HG23	2.19	0.42
1:A:169:ILE:O	1:A:172:GLU:HG2	2.20	0.42
1:A:1431:MET:HE3	1:A:1436:ILE:HD11	2.02	0.42
2:E:95:LEU:HD21	2:E:108:GLN:HB3	2.01	0.42
4:C:96:ARG:NH2	4:C:148:GLU:O	2.36	0.42
1:A:1162:HIS:CD2	1:A:1165:LEU:HD12	2.55	0.42
1:A:72:HIS:N	1:A:205:PRO:HB3	2.35	0.42
1:A:1262:ILE:HG13	1:A:1265:ILE:HG12	2.02	0.42
3:B:807:THR:CG2	3:B:1109:GLN:HB2	2.50	0.42
5:D:83:LYS:HB2	5:D:85:TYR:CE2	2.54	0.42
7:G:5:LYS:HA	7:G:5:LYS:HD2	1.88	0.42
1:A:380:TYR:HD2	1:A:387:VAL:HG22	1.84	0.41
4:C:147:PHE:CZ	6:H:16:THR:HB	2.55	0.41
8:F:90:VAL:HG23	8:F:103:GLU:C	2.44	0.41
1:A:1122:PHE:CZ	1:A:1126:ILE:HD11	2.55	0.41
3:B:816:PRO:HB3	4:C:86:LEU:HB3	2.02	0.41
4:C:262:GLU:HG2	4:C:263:PRO:HD2	2.02	0.41
4:C:308:VAL:HA	4:C:322:THR:O	2.20	0.41
9:J:686:MET:HE2	9:J:686:MET:HB3	1.94	0.41
1:A:166:TYR:H	1:A:169:ILE:HD12	1.85	0.41

Continued on next page...

Continued from previous page...

Atom-1	Atom-2	Interatomic distance (Å)	Clash overlap (Å)
1:A:252:ILE:HD12	1:A:252:ILE:O	2.20	0.41
1:A:1304:MET:HE1	1:A:1325:LEU:HD23	2.02	0.41
3:B:200:TRP:CE2	3:B:487:ILE:HG12	2.55	0.41
1:A:419:ARG:HD2	1:A:456:ALA:HB2	2.01	0.41
1:A:503:SER:O	1:A:507:SER:OG	2.28	0.41
1:A:876:SER:HB3	1:A:1283:LYS:HB2	2.01	0.41
9:J:1025:LYS:HE2	9:J:1025:LYS:HB2	1.73	0.41
1:A:180:ASP:O	1:A:184:LYS:HG2	2.20	0.41
3:B:59:VAL:HG11	3:B:130:LEU:HD21	2.01	0.41
4:C:187:LEU:HB2	4:C:216:HIS:CD2	2.55	0.41
9:J:1029:ILE:HD11	9:J:1034:ILE:HD11	2.03	0.41
1:A:70:MET:HB3	3:B:1217:ILE:HG21	2.01	0.41
1:A:310:ILE:HG21	1:A:1387:ALA:HA	2.02	0.41
1:A:853:GLN:HE22	5:D:150:PHE:HZ	1.68	0.41
1:A:1123:GLU:HB2	1:A:1255:LEU:HB3	2.03	0.41
4:C:74:LYS:HG3	4:C:164:TYR:CD1	2.55	0.41
7:G:8:SER:HB2	9:J:1074:ARG:HH12	1.84	0.41
7:G:8:SER:HB2	9:J:1074:ARG:NH1	2.36	0.41
9:J:743:PRO:CB	9:J:776:LEU:HD23	2.51	0.41
1:A:145:VAL:HG13	1:A:155:TRP:HB2	2.02	0.41
1:A:997:LEU:HD23	1:A:997:LEU:HA	1.94	0.41
3:B:514:LEU:HD13	3:B:514:LEU:HA	1.94	0.41
3:B:665:ASP:OD1	3:B:665:ASP:N	2.50	0.41
9:J:741:TYR:HE2	9:J:779:LEU:HD21	1.86	0.41
1:A:491:LYS:HG3	1:A:1348:PRO:HB3	2.01	0.41
1:A:1170:ASP:HB2	1:A:1229:GLU:HB2	2.02	0.41
3:B:8:ILE:HD12	3:B:641:GLU:HG3	2.03	0.41
3:B:447:GLU:HG2	3:B:447:GLU:H	1.66	0.41
4:C:254:GLN:NE2	4:C:341:GLN:OE1	2.53	0.41
5:D:11:TYR:CZ	5:D:25:LYS:HG3	2.56	0.41
1:A:1170:ASP:OD1	1:A:1170:ASP:N	2.53	0.41
3:B:286:SER:O	3:B:290:GLN:HG2	2.21	0.41
4:C:38:LEU:HD23	4:C:225:ALA:HB1	2.03	0.41
7:G:17:ASP:N	7:G:17:ASP:OD1	2.54	0.41
8:F:45:ILE:HG23	8:F:76:ALA:HB1	2.03	0.41
8:F:164:TYR:HB2	8:F:292:MET:HG3	2.02	0.41
9:J:749:THR:C	9:J:751:LEU:N	2.79	0.41
9:J:938:PRO:HB3	9:J:980:GLN:NE2	2.35	0.41
1:A:66:ARG:HH11	1:A:66:ARG:HG2	1.86	0.41
2:E:67:THR:OG1	2:E:134:GLU:OE1	2.28	0.41
5:D:163:GLN:O	5:D:198:ARG:NH1	2.53	0.41

Continued on next page...

Continued from previous page...

Atom-1	Atom-2	Interatomic distance (Å)	Clash overlap (Å)
8:F:248:LYS:HG3	8:F:250:LYS:HG3	2.03	0.41
9:J:784:LEU:HD21	9:J:799:LEU:HA	2.02	0.41
1:A:993:ARG:HG3	5:D:195:VAL:HG23	2.02	0.40
1:A:1136:TYR:OH	1:A:1159:LEU:HD11	2.21	0.40
1:A:1187:LEU:HD11	7:G:89:GLN:NE2	2.36	0.40
1:A:66:ARG:HG2	1:A:66:ARG:NH1	2.36	0.40
1:A:1267:ASN:O	1:A:1296:ASN:N	2.51	0.40
3:B:380:ALA:O	9:J:1064:PRO:HG3	2.21	0.40
3:B:650:THR:OG1	3:B:668:ARG:NH1	2.53	0.40
1:A:26:VAL:HG12	3:B:1199:MET:HE2	2.02	0.40
1:A:314:LEU:O	3:B:1213:ARG:NH2	2.55	0.40
3:B:185:ASP:OD1	3:B:813:PHE:HB2	2.21	0.40
3:B:926:VAL:HG22	3:B:964:VAL:HG22	2.03	0.40
3:B:1240:GLN:HE21	8:F:56:PRO:HG3	1.86	0.40
9:J:748:LEU:HD21	9:J:777:ILE:HD11	2.02	0.40
1:A:358:ASN:HB3	2:E:100:SER:O	2.21	0.40
1:A:1174:TRP:CZ3	7:G:39:VAL:HG21	2.56	0.40
1:A:1175:CYS:SG	1:A:1224:ARG:HG2	2.62	0.40
6:H:38:PRO:HB3	9:J:815:LEU:HA	2.02	0.40
9:J:1207:MET:HE2	9:J:1207:MET:HB2	1.89	0.40

There are no symmetry-related clashes.

5.3 Torsion angles [i](#)

5.3.1 Protein backbone [i](#)

In the following table, the Percentiles column shows the percent Ramachandran outliers of the chain as a percentile score with respect to all PDB entries followed by that with respect to all EM entries.

The Analysed column shows the number of residues for which the backbone conformation was analysed, and the total number of residues.

Mol	Chain	Analysed	Favoured	Allowed	Outliers	Percentiles	
1	A	1404/1450 (97%)	1365 (97%)	39 (3%)	0	100	100
2	E	98/147 (67%)	96 (98%)	2 (2%)	0	100	100
3	B	1194/1242 (96%)	1156 (97%)	38 (3%)	0	100	100
4	C	357/359 (99%)	352 (99%)	5 (1%)	0	100	100

Continued on next page...

Continued from previous page...

Mol	Chain	Analysed	Favoured	Allowed	Outliers	Percentiles	
5	D	203/205 (99%)	197 (97%)	6 (3%)	0	100	100
6	H	78/80 (98%)	74 (95%)	4 (5%)	0	100	100
7	G	103/105 (98%)	99 (96%)	4 (4%)	0	100	100
8	F	337/339 (99%)	321 (95%)	16 (5%)	0	100	100
9	J	523/1249 (42%)	500 (96%)	23 (4%)	0	100	100
All	All	4297/5176 (83%)	4160 (97%)	137 (3%)	0	100	100

There are no Ramachandran outliers to report.

5.3.2 Protein sidechains ⓘ

In the following table, the Percentiles column shows the percent sidechain outliers of the chain as a percentile score with respect to all PDB entries followed by that with respect to all EM entries.

The Analysed column shows the number of residues for which the sidechain conformation was analysed, and the total number of residues.

Mol	Chain	Analysed	Rotameric	Outliers	Percentiles	
1	A	1250/1279 (98%)	1239 (99%)	11 (1%)	75	86
2	E	90/136 (66%)	88 (98%)	2 (2%)	47	63
3	B	1046/1081 (97%)	1038 (99%)	8 (1%)	79	88
4	C	328/328 (100%)	327 (100%)	1 (0%)	91	96
5	D	185/185 (100%)	182 (98%)	3 (2%)	58	73
6	H	70/70 (100%)	69 (99%)	1 (1%)	62	76
7	G	96/96 (100%)	96 (100%)	0	100	100
8	F	312/312 (100%)	308 (99%)	4 (1%)	65	78
9	J	479/1130 (42%)	459 (96%)	20 (4%)	25	36
All	All	3856/4617 (84%)	3806 (99%)	50 (1%)	64	78

All (50) residues with a non-rotameric sidechain are listed below:

Mol	Chain	Res	Type
1	A	328	CYS
1	A	372	GLN
1	A	387	VAL
1	A	555	VAL

Continued on next page...

Continued from previous page...

Mol	Chain	Res	Type
1	A	639	LEU
1	A	830	ILE
1	A	848	THR
1	A	867	THR
1	A	1176	ILE
1	A	1179	GLU
1	A	1191	SER
2	E	66	ILE
2	E	108	GLN
3	B	212	THR
3	B	925	THR
3	B	937	VAL
3	B	1122	VAL
3	B	1182	ASN
3	B	1197	LYS
3	B	1201	CYS
3	B	1210	VAL
4	C	180	VAL
5	D	36	LEU
5	D	128	ILE
5	D	182	VAL
6	H	14	ILE
8	F	43	SER
8	F	139	VAL
8	F	262	ASN
8	F	329	LEU
9	J	682	LEU
9	J	728	SER
9	J	729	GLN
9	J	731	GLU
9	J	735	LYS
9	J	736	ILE
9	J	739	SER
9	J	740	LYS
9	J	741	TYR
9	J	744	ASP
9	J	746	THR
9	J	747	GLN
9	J	750	ARG
9	J	751	LEU
9	J	773	THR
9	J	813	LYS

Continued on next page...

Continued from previous page...

Mol	Chain	Res	Type
9	J	978	LYS
9	J	979	ASP
9	J	980	GLN
9	J	1242	VAL

Sometimes sidechains can be flipped to improve hydrogen bonding and reduce clashes. All (61) such sidechains are listed below:

Mol	Chain	Res	Type
1	A	84	GLN
1	A	101	ASN
1	A	168	GLN
1	A	264	GLN
1	A	535	GLN
1	A	642	ASN
1	A	664	GLN
1	A	763	GLN
1	A	834	GLN
1	A	853	GLN
1	A	878	GLN
1	A	984	GLN
1	A	1062	HIS
1	A	1090	GLN
1	A	1142	ASN
1	A	1256	ASN
1	A	1276	HIS
1	A	1349	ASN
1	A	1405	ASN
1	A	1439	ASN
3	B	43	ASN
3	B	86	GLN
3	B	95	ASN
3	B	129	ASN
3	B	207	ASN
3	B	242	ASN
3	B	245	GLN
3	B	261	ASN
3	B	302	ASN
3	B	328	ASN
3	B	403	ASN
3	B	434	ASN
3	B	484	GLN
3	B	507	GLN

Continued on next page...

Continued from previous page...

Mol	Chain	Res	Type
3	B	516	ASN
3	B	570	GLN
3	B	598	GLN
3	B	861	GLN
3	B	972	HIS
3	B	1023	GLN
3	B	1039	ASN
3	B	1077	GLN
3	B	1200	ASN
3	B	1227	ASN
4	C	288	HIS
5	D	4	GLN
5	D	67	HIS
5	D	148	GLN
7	G	31	GLN
7	G	36	ASN
7	G	45	HIS
7	G	89	GLN
8	F	121	ASN
8	F	167	GLN
8	F	177	ASN
8	F	276	ASN
8	F	302	ASN
9	J	828	ASN
9	J	905	GLN
9	J	1081	ASN
9	J	1102	HIS

5.3.3 RNA ⓘ

There are no RNA molecules in this entry.

5.4 Non-standard residues in protein, DNA, RNA chains ⓘ

There are no non-standard protein/DNA/RNA residues in this entry.

5.5 Carbohydrates ⓘ

There are no oligosaccharides in this entry.

5.6 Ligand geometry

Of 7 ligands modelled in this entry, 7 are monoatomic - leaving 0 for Mogul analysis.

There are no bond length outliers.

There are no bond angle outliers.

There are no chirality outliers.

There are no torsion outliers.

There are no ring outliers.

No monomer is involved in short contacts.

5.7 Other polymers

There are no such residues in this entry.

5.8 Polymer linkage issues

There are no chain breaks in this entry.

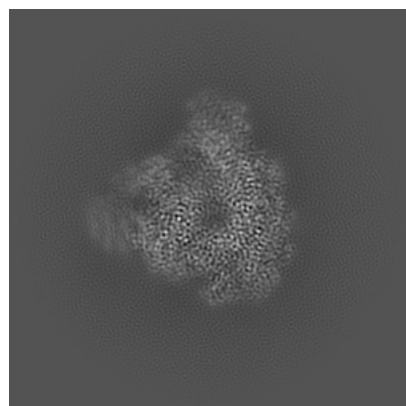
6 Map visualisation [i](#)

This section contains visualisations of the EMDB entry EMD-39505. These allow visual inspection of the internal detail of the map and identification of artifacts.

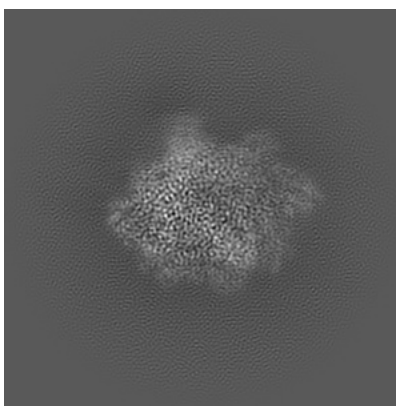
Images derived from a raw map, generated by summing the deposited half-maps, are presented below the corresponding image components of the primary map to allow further visual inspection and comparison with those of the primary map.

6.1 Orthogonal projections [i](#)

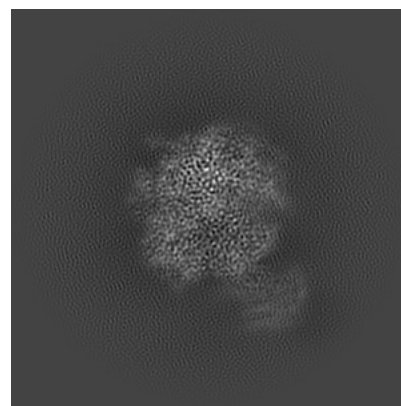
6.1.1 Primary map



X

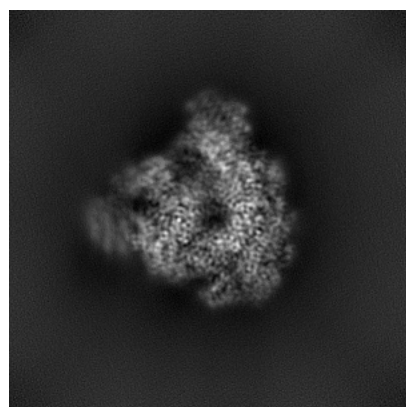


Y

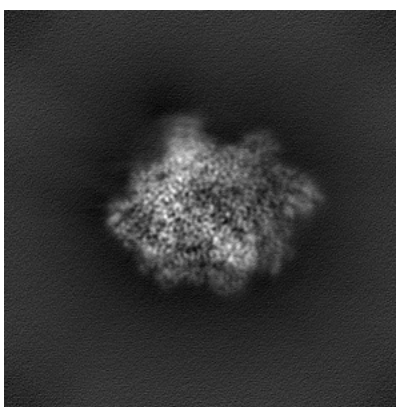


Z

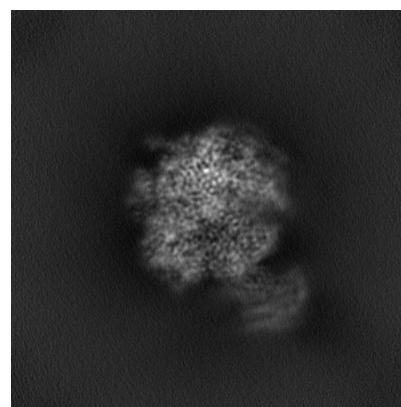
6.1.2 Raw map



X



Y

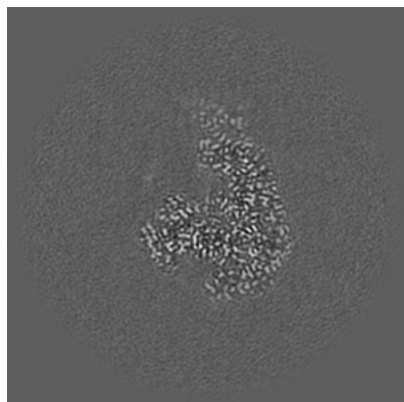


Z

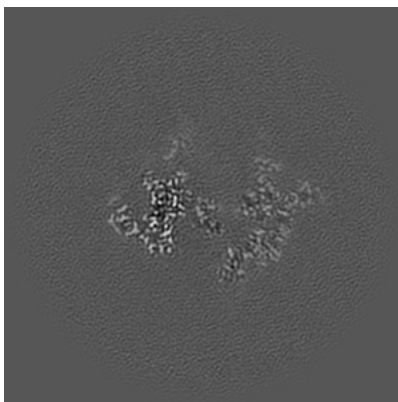
The images above show the map projected in three orthogonal directions.

6.2 Central slices [i](#)

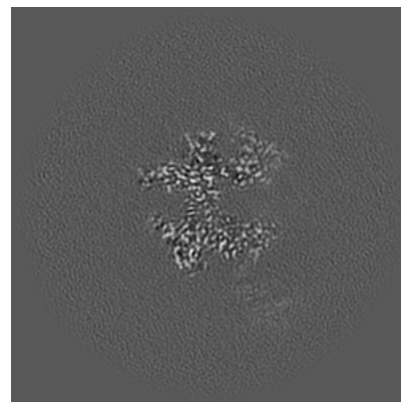
6.2.1 Primary map



X Index: 180

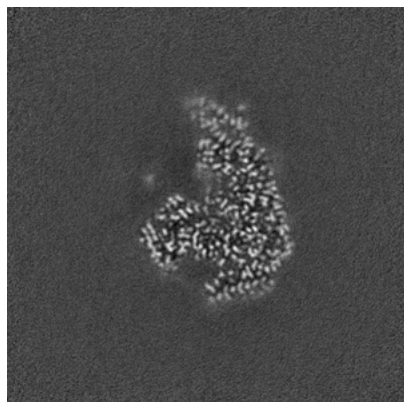


Y Index: 180

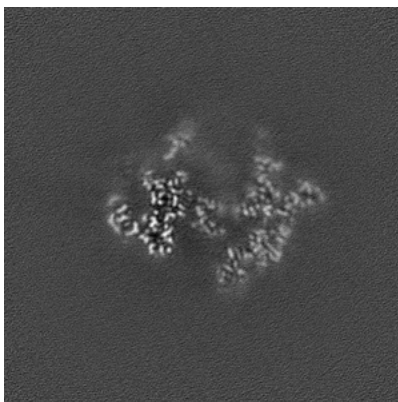


Z Index: 180

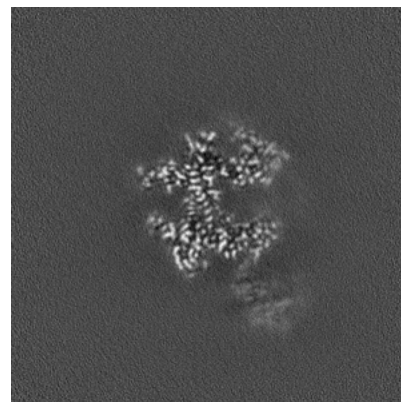
6.2.2 Raw map



X Index: 180



Y Index: 180

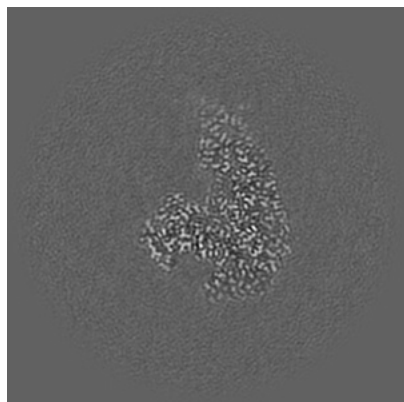


Z Index: 180

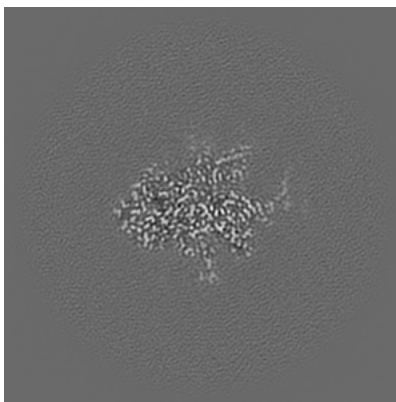
The images above show central slices of the map in three orthogonal directions.

6.3 Largest variance slices [i](#)

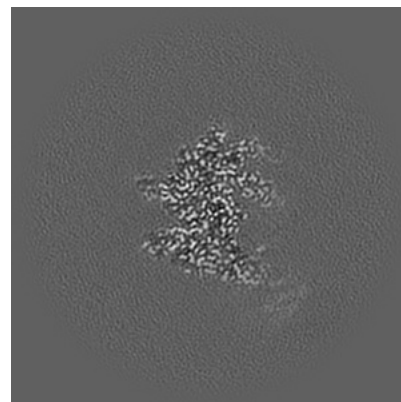
6.3.1 Primary map



X Index: 179

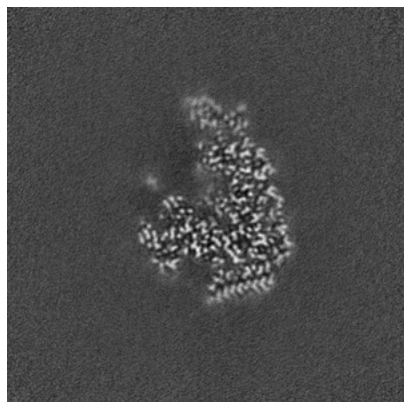


Y Index: 215

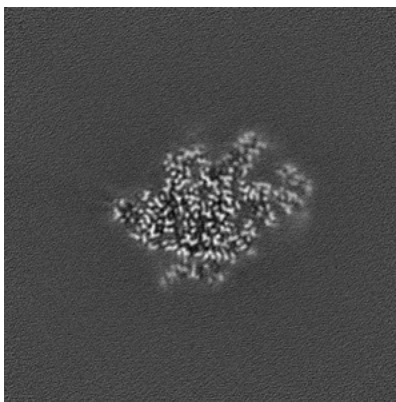


Z Index: 151

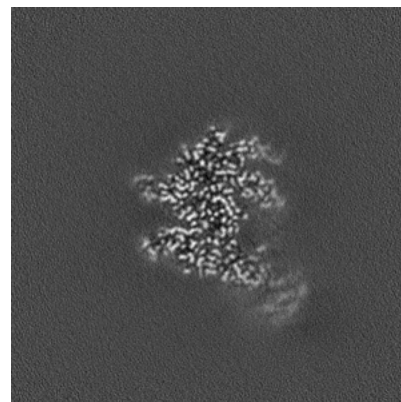
6.3.2 Raw map



X Index: 182



Y Index: 207

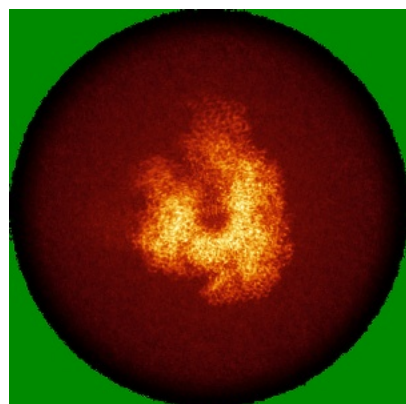


Z Index: 151

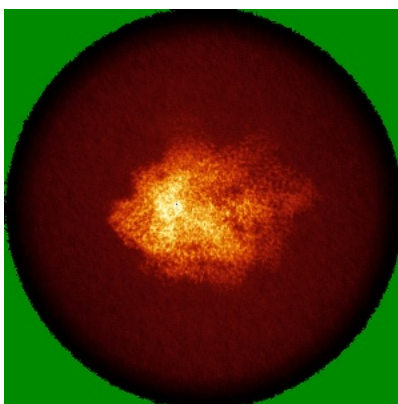
The images above show the largest variance slices of the map in three orthogonal directions.

6.4 Orthogonal standard-deviation projections (False-color) [i](#)

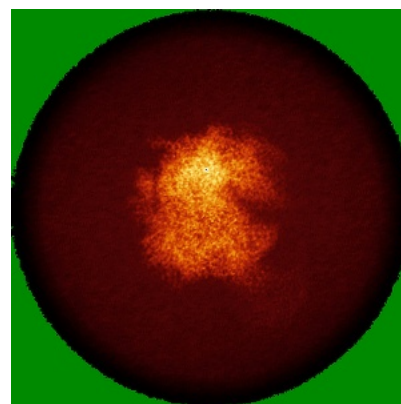
6.4.1 Primary map



X

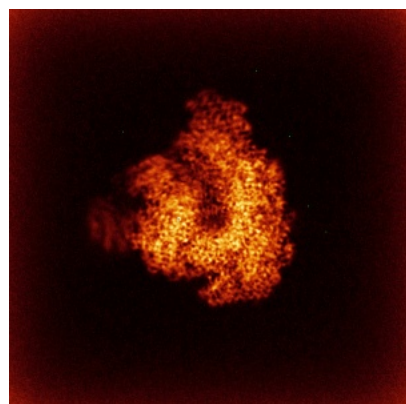


Y

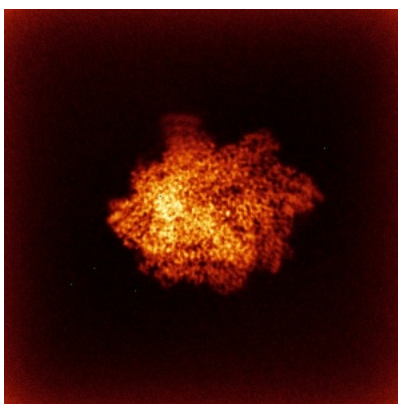


Z

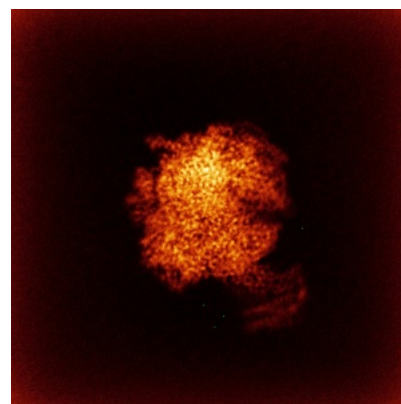
6.4.2 Raw map



X



Y

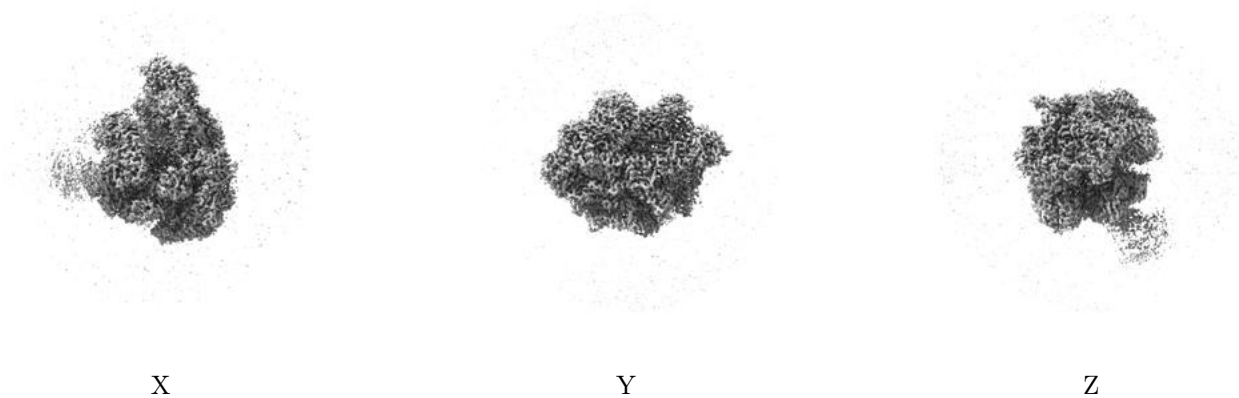


Z

The images above show the map standard deviation projections with false color in three orthogonal directions. Minimum values are shown in green, max in blue, and dark to light orange shades represent small to large values respectively.

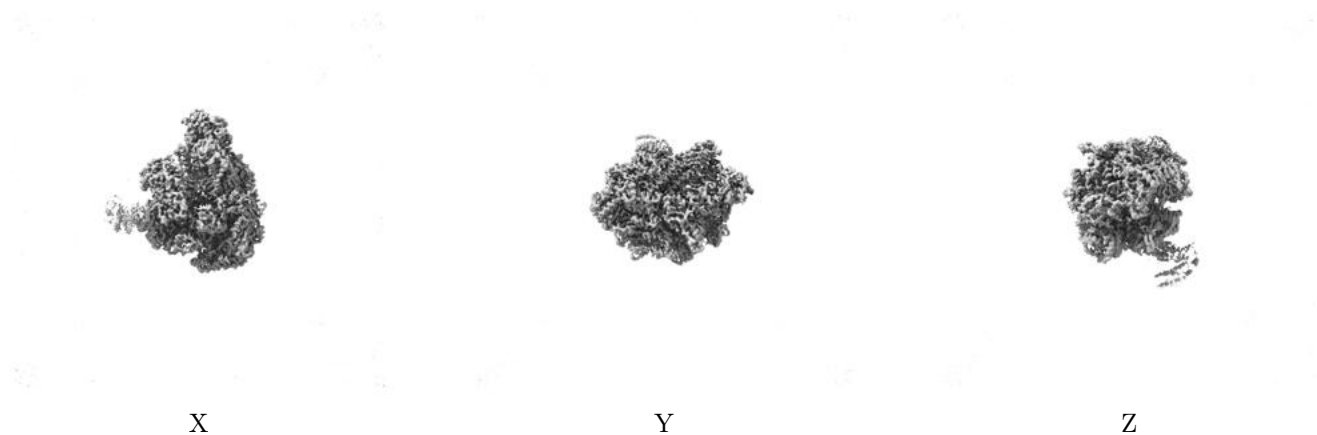
6.5 Orthogonal surface views [i](#)

6.5.1 Primary map



The images above show the 3D surface view of the map at the recommended contour level 0.43. These images, in conjunction with the slice images, may facilitate assessment of whether an appropriate contour level has been provided.

6.5.2 Raw map



These images show the 3D surface of the raw map. The raw map's contour level was selected so that its surface encloses the same volume as the primary map does at its recommended contour level.

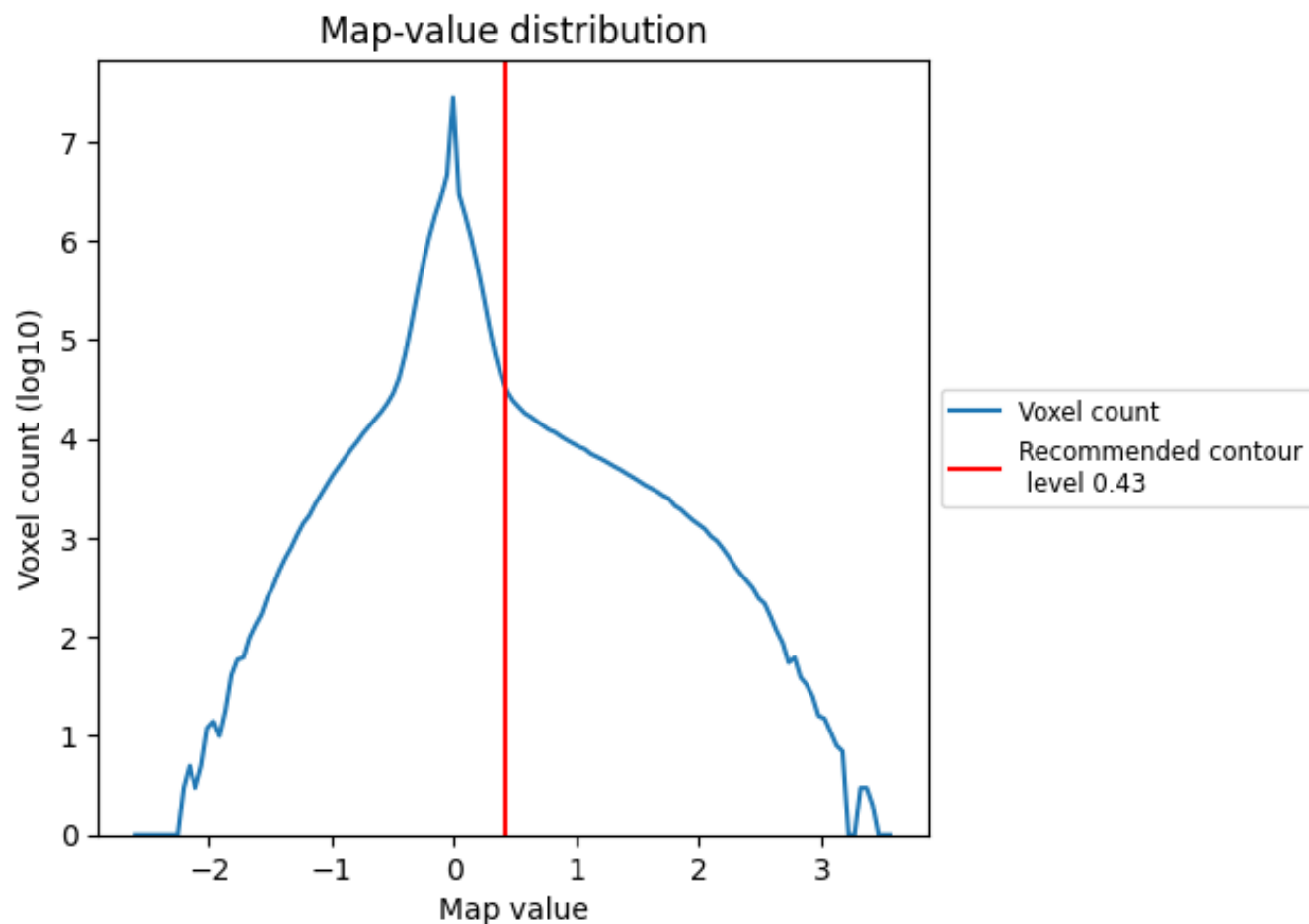
6.6 Mask visualisation [i](#)

This section was not generated. No masks/segmentation were deposited.

7 Map analysis [i](#)

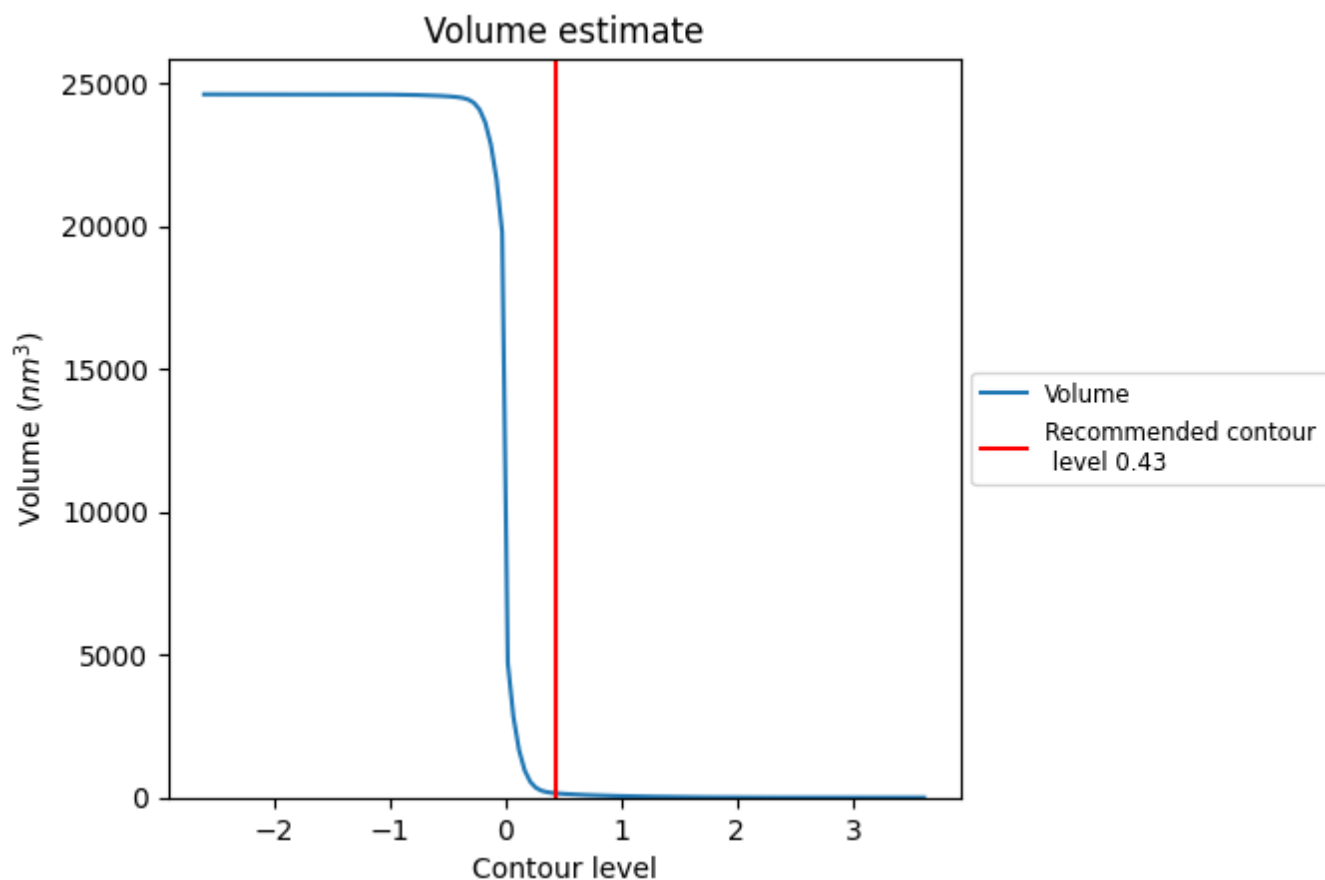
This section contains the results of statistical analysis of the map.

7.1 Map-value distribution [i](#)



The map-value distribution is plotted in 128 intervals along the x-axis. The y-axis is logarithmic. A spike in this graph at zero usually indicates that the volume has been masked.

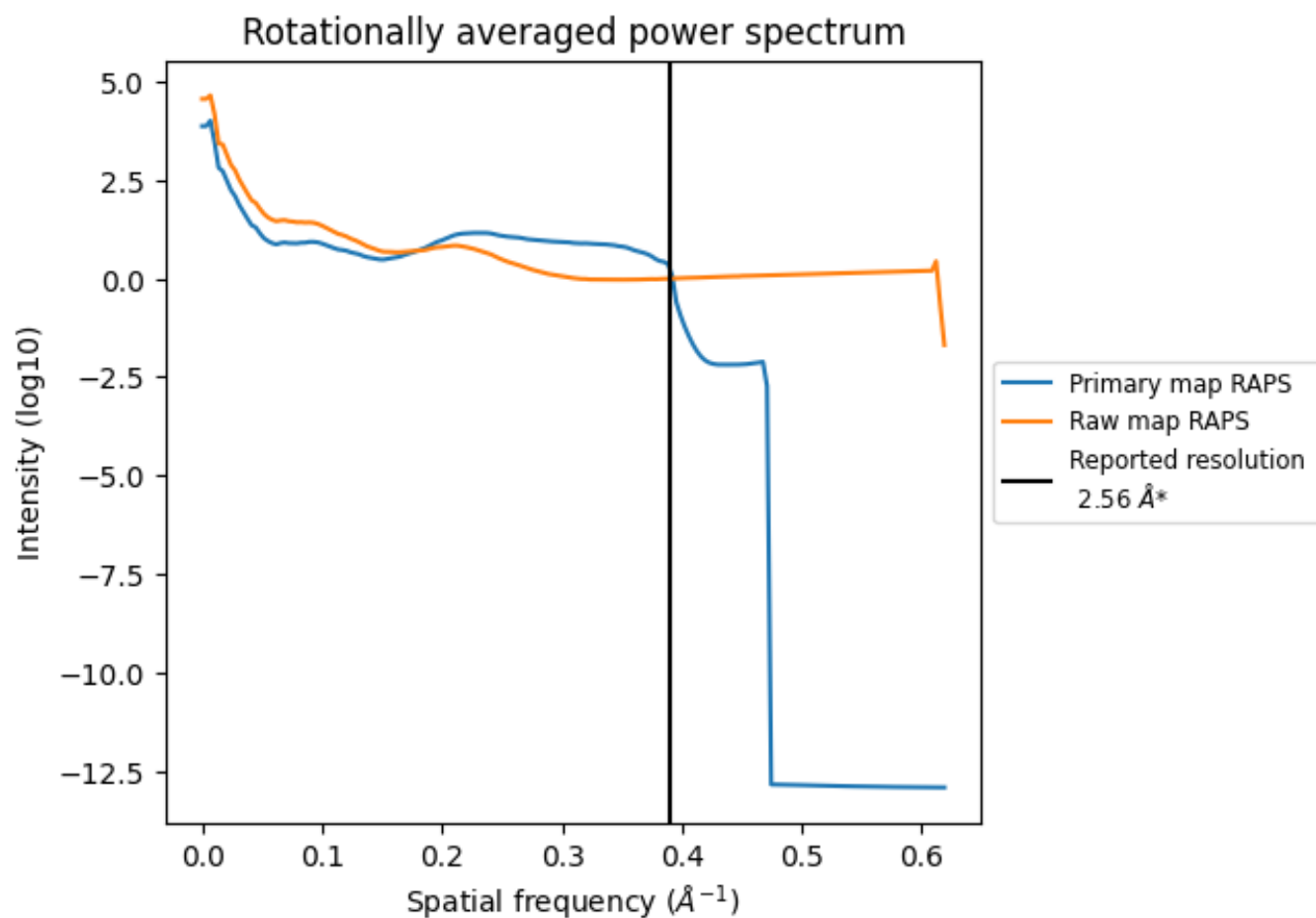
7.2 Volume estimate [i](#)



The volume at the recommended contour level is 153 nm³; this corresponds to an approximate mass of 138 kDa.

The volume estimate graph shows how the enclosed volume varies with the contour level. The recommended contour level is shown as a vertical line and the intersection between the line and the curve gives the volume of the enclosed surface at the given level.

7.3 Rotationally averaged power spectrum ⓘ

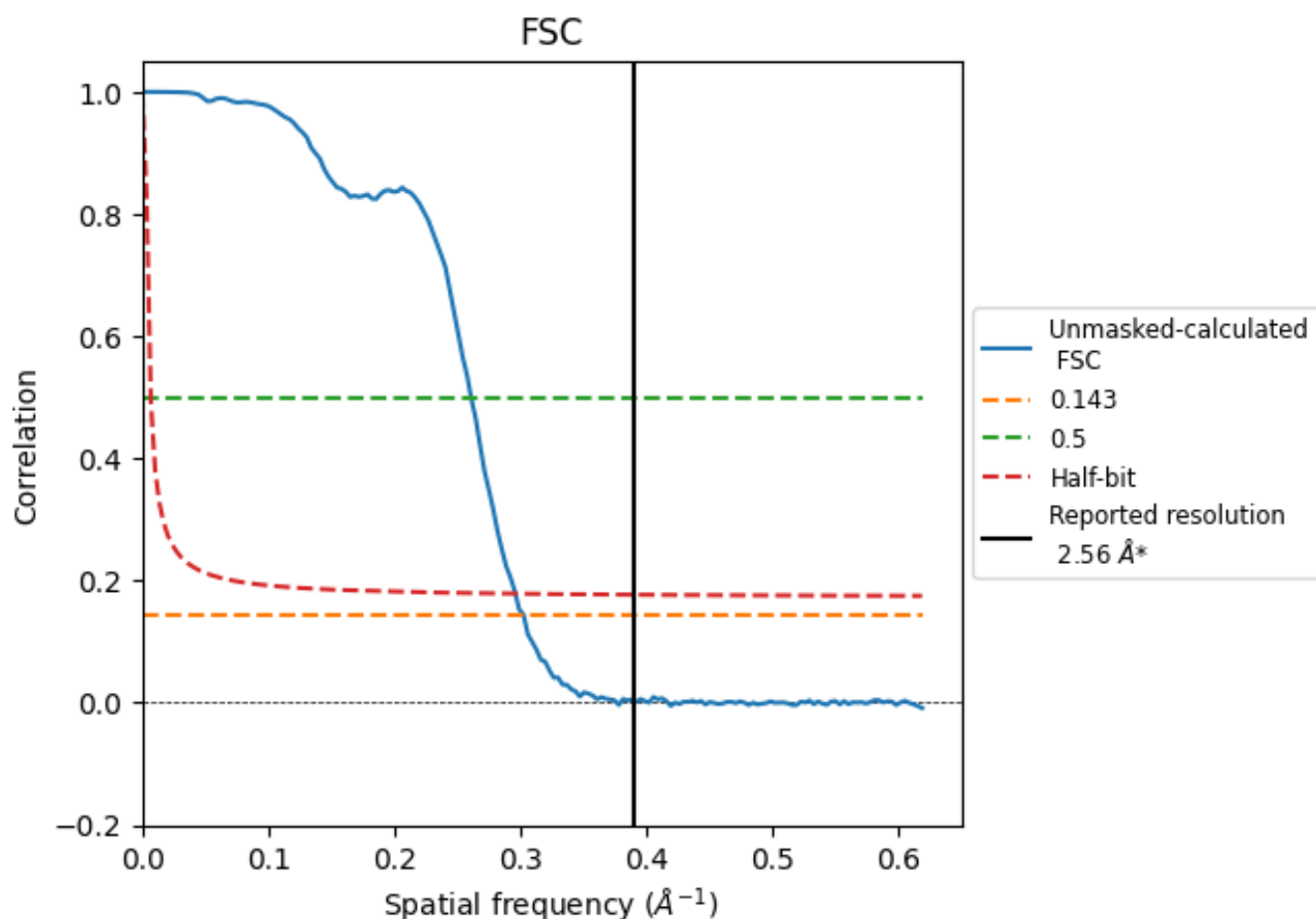


*Reported resolution corresponds to spatial frequency of 0.391 Å⁻¹

8 Fourier-Shell correlation [i](#)

Fourier-Shell Correlation (FSC) is the most commonly used method to estimate the resolution of single-particle and subtomogram-averaged maps. The shape of the curve depends on the imposed symmetry, mask and whether or not the two 3D reconstructions used were processed from a common reference. The reported resolution is shown as a black line. A curve is displayed for the half-bit criterion in addition to lines showing the 0.143 gold standard cut-off and 0.5 cut-off.

8.1 FSC [i](#)



*Reported resolution corresponds to spatial frequency of 0.391 \AA^{-1}

8.2 Resolution estimates [i](#)

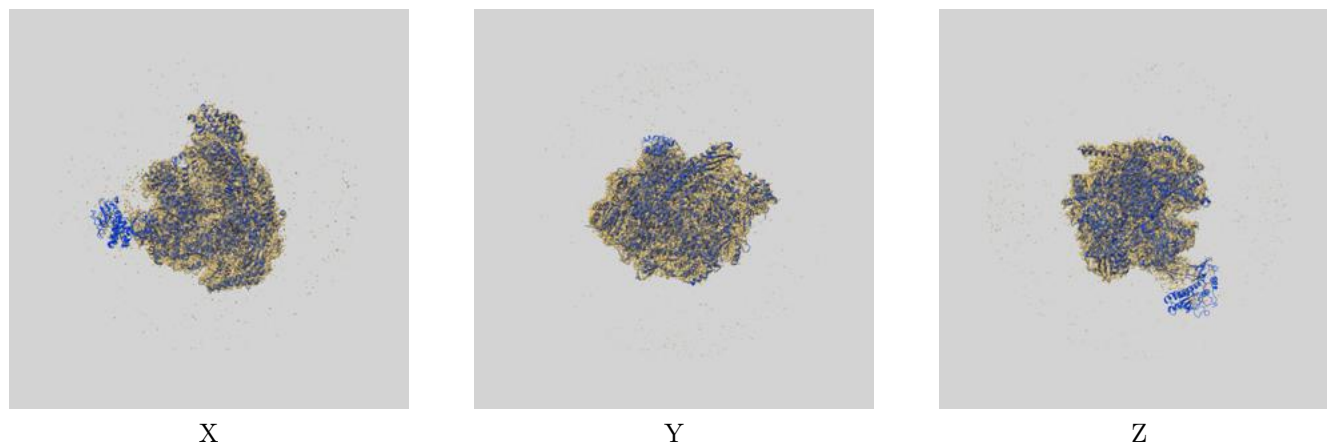
Resolution estimate (Å)	Estimation criterion (FSC cut-off)		
	0.143	0.5	Half-bit
Reported by author	2.56	-	-
Author-provided FSC curve	-	-	-
Unmasked-calculated*	3.30	3.83	3.38

*Resolution estimate based on FSC curve calculated by comparison of deposited half-maps. The value from deposited half-maps intersecting FSC 0.143 CUT-OFF 3.30 differs from the reported value 2.56 by more than 10 %

9 Map-model fit [i](#)

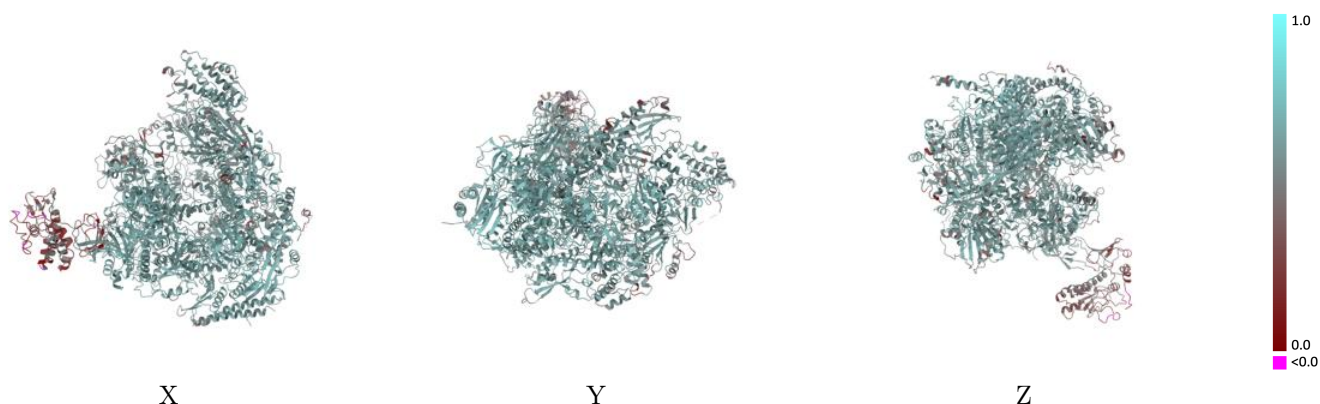
This section contains information regarding the fit between EMDB map EMD-39505 and PDB model 8YQT. Per-residue inclusion information can be found in section [3](#) on page [6](#).

9.1 Map-model overlay [i](#)



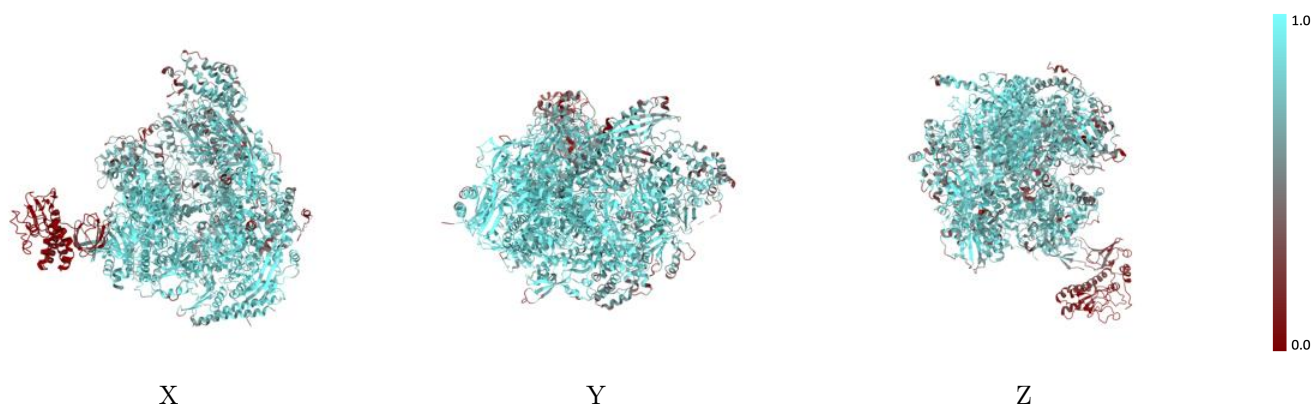
The images above show the 3D surface view of the map at the recommended contour level 0.43 at 50% transparency in yellow overlaid with a ribbon representation of the model coloured in blue. These images allow for the visual assessment of the quality of fit between the atomic model and the map.

9.2 Q-score mapped to coordinate model [i](#)



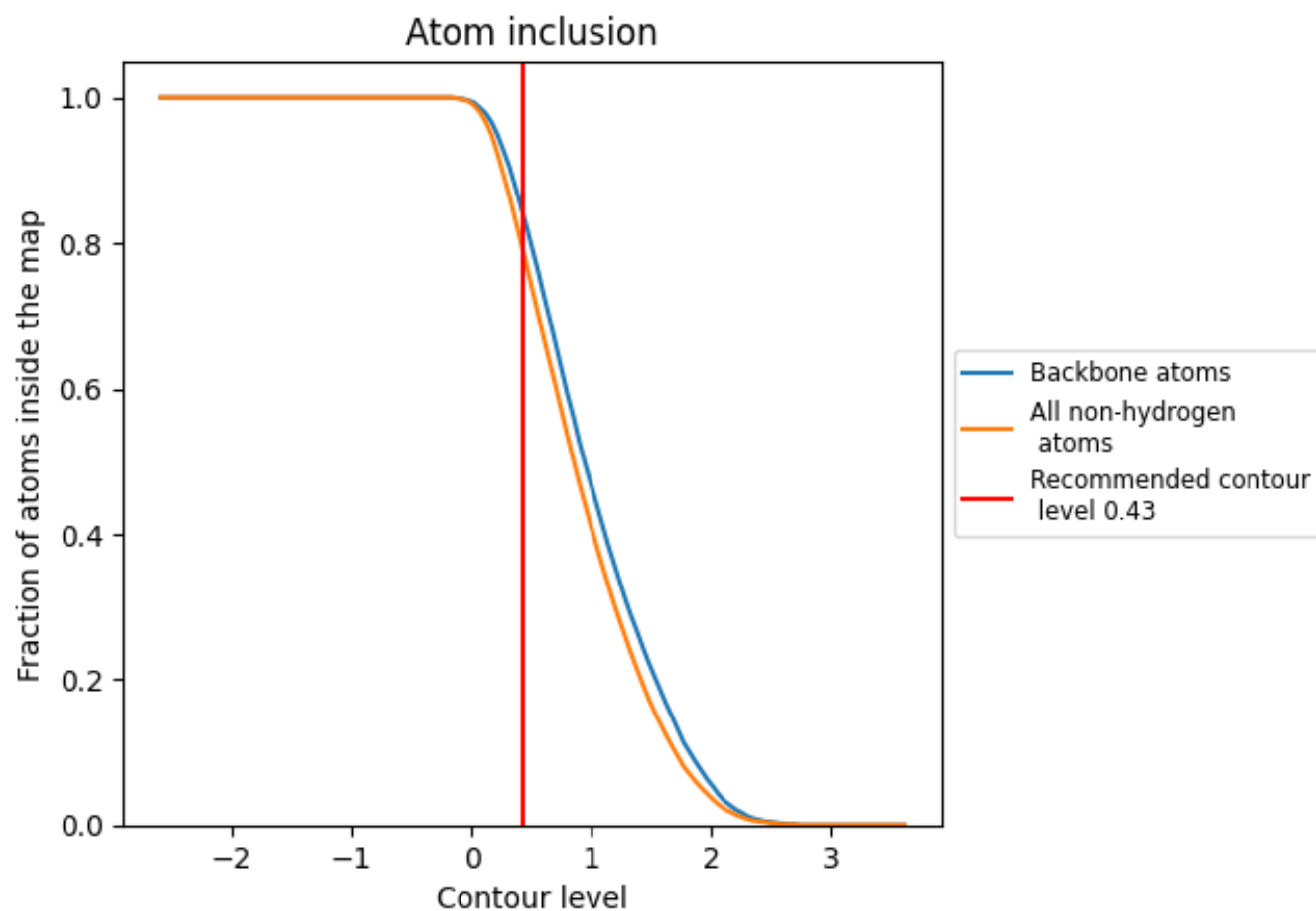
The images above show the model with each residue coloured according to its Q-score. This shows their resolvability in the map with higher Q-score values reflecting better resolvability. Please note: Q-score is calculating the resolvability of atoms, and thus high values are only expected at resolutions at which atoms can be resolved. Low Q-score values may therefore be expected for many entries.

9.3 Atom inclusion mapped to coordinate model [i](#)



The images above show the model with each residue coloured according to its atom inclusion. This shows to what extent they are inside the map at the recommended contour level (0.43).

9.4 Atom inclusion [i](#)



At the recommended contour level, 84% of all backbone atoms, 79% of all non-hydrogen atoms, are inside the map.

9.5 Map-model fit summary ⓘ

The table lists the average atom inclusion at the recommended contour level (0.43) and Q-score for the entire model and for each chain.

Chain	Atom inclusion	Q-score
All	<div></div> 0.7880	<div></div> 0.6010
A	<div></div> 0.8570	<div></div> 0.6230
B	<div></div> 0.8610	<div></div> 0.6300
C	<div></div> 0.8880	<div></div> 0.6360
D	<div></div> 0.7900	<div></div> 0.5980
E	<div></div> 0.8990	<div></div> 0.6420
F	<div></div> 0.2650	<div></div> 0.3960
G	<div></div> 0.8220	<div></div> 0.6150
H	<div></div> 0.9400	<div></div> 0.6450
J	<div></div> 0.6630	<div></div> 0.5730

1.0

0.0

<0.0