



Full wwPDB X-ray Structure Validation Report ⓘ

Jun 12, 2024 – 11:03 AM EDT

PDB ID : 2X7Y
Title : P450 BM3 F87A in complex with DMSO
Authors : Kuper, J.; Wong, T.S.; Roccatano, D.; Wilmanns, M.; Schwaneberg, U.
Deposited on : 2010-03-04
Resolution : 2.10 Å(reported)

This is a Full wwPDB X-ray Structure Validation Report for a publicly released PDB entry.

We welcome your comments at validation@mail.wwpdb.org

A user guide is available at

<https://www.wwpdb.org/validation/2017/XrayValidationReportHelp>

with specific help available everywhere you see the ⓘ symbol.

The types of validation reports are described at

<http://www.wwpdb.org/validation/2017/FAQs#types>.

The following versions of software and data (see [references ⓘ](#)) were used in the production of this report:

MolProbity	:	4.02b-467
Mogul	:	2022.3.0, CSD as543be (2022)
Xtriage (Phenix)	:	1.20.1
EDS	:	2.36.2
buster-report	:	1.1.7 (2018)
Percentile statistics	:	20191225.v01 (using entries in the PDB archive December 25th 2019)
Refmac	:	5.8.0158
CCP4	:	7.0.044 (Gargrove)
Ideal geometry (proteins)	:	Engh & Huber (2001)
Ideal geometry (DNA, RNA)	:	Parkinson et al. (1996)
Validation Pipeline (wwPDB-VP)	:	2.36.2

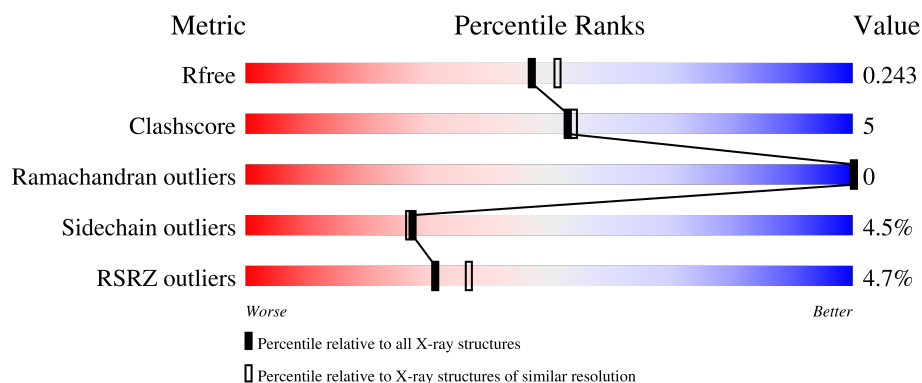
1 Overall quality at a glance

The following experimental techniques were used to determine the structure:

X-RAY DIFFRACTION

The reported resolution of this entry is 2.10 Å.

Percentile scores (ranging between 0-100) for global validation metrics of the entry are shown in the following graphic. The table shows the number of entries on which the scores are based.



Metric	Whole archive (#Entries)	Similar resolution (#Entries, resolution range(Å))
R_{free}	130704	5197 (2.10-2.10)
Clashscore	141614	5710 (2.10-2.10)
Ramachandran outliers	138981	5647 (2.10-2.10)
Sidechain outliers	138945	5648 (2.10-2.10)
RSRZ outliers	127900	5083 (2.10-2.10)

The table below summarises the geometric issues observed across the polymeric chains and their fit to the electron density. The red, orange, yellow and green segments of the lower bar indicate the fraction of residues that contain outliers for ≥ 3 , 2, 1 and 0 types of geometric quality criteria respectively. A grey segment represents the fraction of residues that are not modelled. The numeric value for each fraction is indicated below the corresponding segment, with a dot representing fractions $\leq 5\%$. The upper red bar (where present) indicates the fraction of residues that have poor fit to the electron density. The numeric value is given above the bar.

Mol	Chain	Length	Quality of chain
1	A	455	<div> <div>5%</div> <div> <div></div> <div>81%</div> <div>14%</div> <div>• •</div> </div> </div>
1	B	455	<div> <div>4%</div> <div> <div></div> <div>83%</div> <div>12%</div> <div>• •</div> </div> </div>

2 Entry composition [i](#)

There are 5 unique types of molecules in this entry. The entry contains 7681 atoms, of which 0 are hydrogens and 0 are deuteriums.

In the tables below, the ZeroOcc column contains the number of atoms modelled with zero occupancy, the AltConf column contains the number of residues with at least one atom in alternate conformation and the Trace column contains the number of residues modelled with at most 2 atoms.

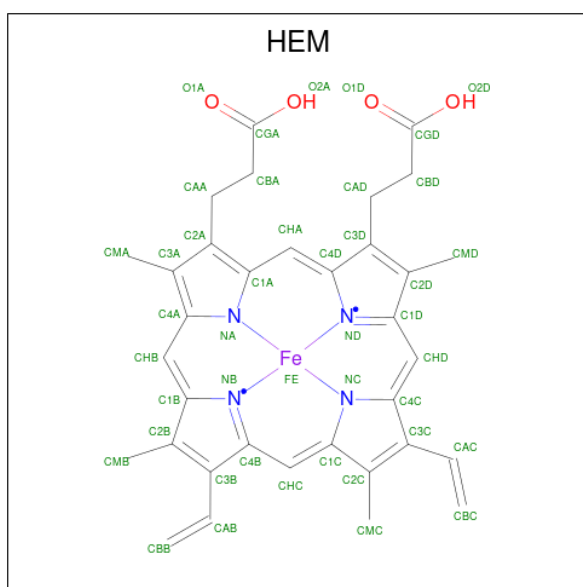
- Molecule 1 is a protein called BIFUNCTIONAL P-450/NADPH-P450 REDUCTASE.

Mol	Chain	Residues	Atoms					ZeroOcc	AltConf	Trace
1	A	437	Total	C	N	O	S	0	0	0
			3509	2250	592	650	17			
1	B	439	Total	C	N	O	S	0	0	0
			3522	2257	595	653	17			

There are 2 discrepancies between the modelled and reference sequences:

Chain	Residue	Modelled	Actual	Comment	Reference
A	87	ALA	PHE	engineered mutation	UNP P14779
B	87	ALA	PHE	engineered mutation	UNP P14779

- Molecule 2 is PROTOPORPHYRIN IX CONTAINING FE (three-letter code: HEM) (formula: $C_{34}H_{32}FeN_4O_4$).



Mol	Chain	Residues	Atoms					ZeroOcc	AltConf
2	A	1	Total	C	Fe	N	O	0	0
			43	34	1	4	4		

Continued on next page...

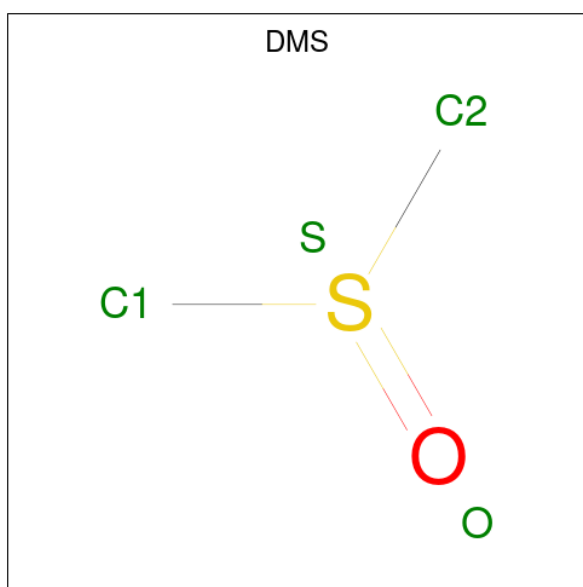
Continued from previous page...

Mol	Chain	Residues	Atoms					ZeroOcc	AltConf
2	B	1	Total	C	Fe	N	O	0	0
			43	34	1	4	4		

- Molecule 3 is ZINC ION (three-letter code: ZN) (formula: Zn).

Mol	Chain	Residues	Atoms		ZeroOcc	AltConf
3	A	3	Total	Zn	0	0
			3	3		
3	B	1	Total	Zn	0	0
			1	1		

- Molecule 4 is DIMETHYL SULFOXIDE (three-letter code: DMS) (formula: C₂H₆OS).



Mol	Chain	Residues	Atoms				ZeroOcc	AltConf
4	A	1	Total	C	O	S	0	0
			4	2	1	1		
4	B	1	Total	C	O	S	0	0
			4	2	1	1		

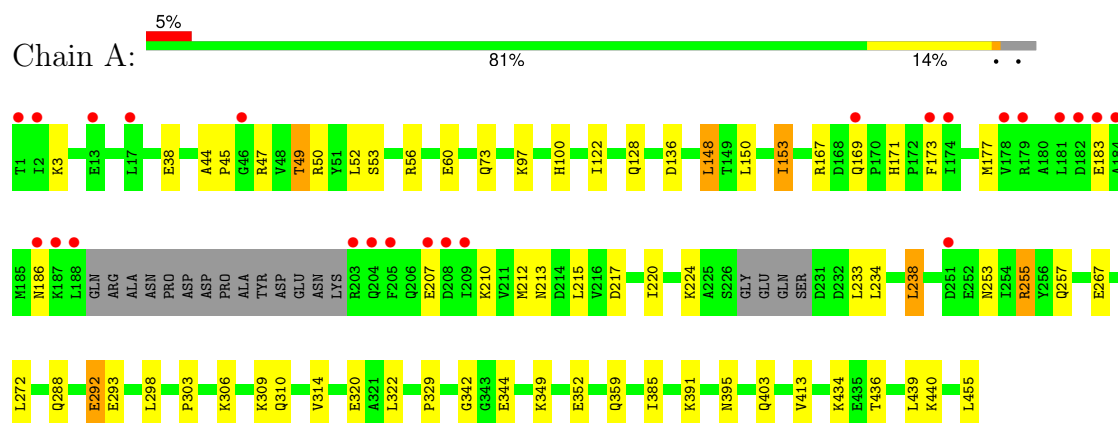
- Molecule 5 is water.

Mol	Chain	Residues	Atoms		ZeroOcc	AltConf
5	A	279	Total	O	0	0
			279	279		
5	B	273	Total	O	0	0
			273	273		

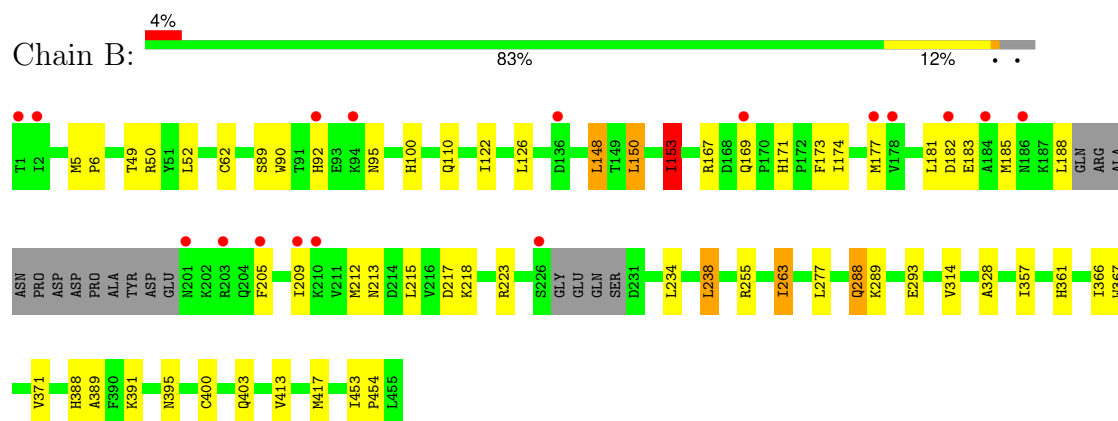
3 Residue-property plots [i](#)

These plots are drawn for all protein, RNA, DNA and oligosaccharide chains in the entry. The first graphic for a chain summarises the proportions of the various outlier classes displayed in the second graphic. The second graphic shows the sequence view annotated by issues in geometry and electron density. Residues are color-coded according to the number of geometric quality criteria for which they contain at least one outlier: green = 0, yellow = 1, orange = 2 and red = 3 or more. A red dot above a residue indicates a poor fit to the electron density ($RSRZ > 2$). Stretches of 2 or more consecutive residues without any outlier are shown as a green connector. Residues present in the sample, but not in the model, are shown in grey.

• Molecule 1: BIFUNCTIONAL P-450/NADPH-P450 REDUCTASE



• Molecule 1: BIFUNCTIONAL P-450/NADPH-P450 REDUCTASE



4 Data and refinement statistics

Property	Value	Source
Space group	P 21 21 21	Depositor
Cell constants a, b, c, α , β , γ	82.98Å 87.88Å 159.59Å 90.00° 90.00° 90.00°	Depositor
Resolution (Å)	57.54 – 2.10 57.52 – 2.10	Depositor EDS
% Data completeness (in resolution range)	100.0 (57.54-2.10) 100.0 (57.52-2.10)	Depositor EDS
R_{merge}	0.12	Depositor
R_{sym}	(Not available)	Depositor
$\langle I/\sigma(I) \rangle$ ¹	2.55 (at 2.10Å)	Xtriage
Refinement program	REFMAC 5.2.0019	Depositor
R, R_{free}	0.198 , 0.243 0.199 , 0.243	Depositor DCC
R_{free} test set	3502 reflections (5.09%)	wwPDB-VP
Wilson B-factor (Å ²)	22.8	Xtriage
Anisotropy	0.077	Xtriage
Bulk solvent k_{sol} (e/Å ³), B_{sol} (Å ²)	0.35 , 53.2	EDS
L-test for twinning ²	$\langle L \rangle = 0.48$, $\langle L^2 \rangle = 0.31$	Xtriage
Estimated twinning fraction	No twinning to report.	Xtriage
F_o, F_c correlation	0.93	EDS
Total number of atoms	7681	wwPDB-VP
Average B, all atoms (Å ²)	24.0	wwPDB-VP

Xtriage's analysis on translational NCS is as follows: *The largest off-origin peak in the Patterson function is 4.25% of the height of the origin peak. No significant pseudotranslation is detected.*

¹Intensities estimated from amplitudes.

²Theoretical values of $\langle |L| \rangle$, $\langle L^2 \rangle$ for acentric reflections are 0.5, 0.333 respectively for untwinned datasets, and 0.375, 0.2 for perfectly twinned datasets.

5 Model quality

5.1 Standard geometry

Bond lengths and bond angles in the following residue types are not validated in this section: HEM, ZN, DMS

The Z score for a bond length (or angle) is the number of standard deviations the observed value is removed from the expected value. A bond length (or angle) with $|Z| > 5$ is considered an outlier worth inspection. RMSZ is the root-mean-square of all Z scores of the bond lengths (or angles).

Mol	Chain	Bond lengths		Bond angles	
		RMSZ	$\# Z > 5$	RMSZ	$\# Z > 5$
1	A	0.68	0/3588	0.75	4/4848 (0.1%)
1	B	0.68	0/3601	0.76	5/4865 (0.1%)
All	All	0.68	0/7189	0.75	9/9713 (0.1%)

There are no bond length outliers.

All (9) bond angle outliers are listed below:

Mol	Chain	Res	Type	Atoms	Z	Observed(°)	Ideal(°)
1	B	153	ILE	CB-CA-C	-7.04	97.53	111.60
1	A	148	LEU	CA-CB-CG	6.54	130.33	115.30
1	B	148	LEU	CA-CB-CG	5.96	129.00	115.30
1	B	150	LEU	CB-CG-CD2	5.60	120.52	111.00
1	A	153	ILE	CB-CA-C	-5.47	100.65	111.60
1	A	436	THR	N-CA-C	-5.43	96.34	111.00
1	A	153	ILE	CG1-CB-CG2	5.39	123.26	111.40
1	B	223	ARG	NE-CZ-NH1	5.17	122.88	120.30
1	B	50	ARG	NE-CZ-NH2	-5.03	117.78	120.30

There are no chirality outliers.

There are no planarity outliers.

5.2 Too-close contacts

In the following table, the Non-H and H(model) columns list the number of non-hydrogen atoms and hydrogen atoms in the chain respectively. The H(added) column lists the number of hydrogen atoms added and optimized by MolProbity. The Clashes column lists the number of clashes within the asymmetric unit, whereas Symm-Clashes lists symmetry-related clashes.

Mol	Chain	Non-H	H(model)	H(added)	Clashes	Symm-Clashes
1	A	3509	0	3497	43	0
1	B	3522	0	3506	35	0
2	A	43	0	30	0	0
2	B	43	0	30	1	0
3	A	3	0	0	0	0
3	B	1	0	0	0	0
4	A	4	0	6	0	0
4	B	4	0	6	0	0
5	A	279	0	0	8	0
5	B	273	0	0	4	0
All	All	7681	0	7075	77	0

The all-atom clashscore is defined as the number of clashes found per 1000 atoms (including hydrogen atoms). The all-atom clashscore for this structure is 5.

All (77) close contacts within the same asymmetric unit are listed below, sorted by their clash magnitude.

Atom-1	Atom-2	Interatomic distance (Å)	Clash overlap (Å)
1:B:403:GLN:NE2	5:B:2233:HOH:O	2.18	0.76
1:A:100:HIS:HD2	5:A:2275:HOH:O	1.67	0.75
1:B:213:ASN:HD22	1:B:255:ARG:HH11	1.34	0.75
1:A:213:ASN:O	1:A:217:ASP:OD2	2.05	0.73
1:A:3:LYS:HD3	1:A:344:GLU:OE2	1.92	0.69
1:B:100:HIS:HD2	5:B:2270:HOH:O	1.78	0.66
1:B:391:LYS:NZ	1:B:395:ASN:HD22	1.93	0.66
1:A:47:ARG:HH11	1:A:73:GLN:HG2	1.60	0.66
1:A:38:GLU:OE2	1:A:56:ARG:NH1	2.28	0.65
1:A:288:GLN:O	1:A:292:GLU:HG2	1.97	0.65
1:B:122:ILE:HG22	1:B:148:LEU:HD22	1.77	0.65
1:A:177:MET:HA	1:A:212:MET:CE	2.27	0.65
1:B:288:GLN:HG2	5:B:2117:HOH:O	1.98	0.64
1:B:388:HIS:HD2	1:B:391:LYS:HZ3	1.45	0.63
1:B:217:ASP:OD1	1:B:255:ARG:NH2	2.28	0.62
1:A:148:LEU:HD11	1:A:413:VAL:HG21	1.81	0.62
1:B:181:LEU:HD11	1:B:263:ILE:HD13	1.81	0.61
1:B:388:HIS:HD2	1:B:391:LYS:NZ	1.99	0.61
1:A:349:LYS:NZ	5:A:2198:HOH:O	2.35	0.59
1:B:391:LYS:HZ3	1:B:395:ASN:HD22	1.50	0.59
1:B:185:MET:HA	1:B:188:LEU:HD12	1.84	0.58
1:B:177:MET:HG3	1:B:212:MET:HE1	1.85	0.57
1:B:293:GLU:OE1	1:B:314:VAL:HG23	2.07	0.55
1:B:388:HIS:CD2	1:B:391:LYS:HZ3	2.24	0.55

Continued on next page...

Continued from previous page...

Atom-1	Atom-2	Interatomic distance (Å)	Clash overlap (Å)
1:A:329:PRO:HG3	1:A:439:LEU:HG	1.90	0.54
1:A:171:HIS:HD2	1:A:173:PHE:H	1.55	0.53
1:A:177:MET:HA	1:A:212:MET:HE1	1.92	0.52
1:B:148:LEU:HD11	1:B:413:VAL:HG21	1.91	0.52
1:A:177:MET:HA	1:A:212:MET:HE2	1.91	0.51
1:A:272:LEU:HD13	1:A:322:LEU:HG	1.91	0.51
1:B:62:CYS:HB3	1:B:395:ASN:ND2	2.26	0.51
1:B:90:TRP:HB3	1:B:92:HIS:CE1	2.46	0.50
1:A:267:GLU:HB3	5:A:2156:HOH:O	2.11	0.50
1:A:128:GLN:NE2	5:A:2099:HOH:O	2.44	0.50
1:A:306:LYS:HG2	1:A:310:GLN:HE21	1.75	0.50
1:A:53:SER:HB3	1:A:359:GLN:HB3	1.93	0.50
1:B:205:PHE:O	1:B:209:ILE:HG13	2.11	0.49
1:A:253:ASN:O	1:A:257:GLN:HG2	2.12	0.49
1:A:403:GLN:NE2	5:A:2238:HOH:O	2.45	0.49
1:A:44:ALA:HB1	1:A:45:PRO:HD2	1.95	0.49
1:A:47:ARG:NH1	1:A:73:GLN:HG2	2.28	0.49
1:A:288:GLN:O	1:A:292:GLU:CG	2.60	0.49
1:A:434:LYS:HD3	1:A:440:LYS:HE2	1.95	0.49
1:A:44:ALA:HB3	1:A:47:ARG:HB2	1.95	0.48
1:A:136:ASP:OD2	1:B:218:LYS:HD3	2.14	0.48
1:A:320:GLU:HA	1:A:320:GLU:OE1	2.15	0.47
1:A:391:LYS:NZ	1:A:395:ASN:HD22	2.13	0.47
1:B:288:GLN:HB3	5:B:2166:HOH:O	2.15	0.46
1:A:171:HIS:HE1	5:A:2132:HOH:O	1.99	0.46
1:B:171:HIS:HD2	1:B:173:PHE:H	1.63	0.46
1:A:122:ILE:HG22	1:A:148:LEU:HD22	1.98	0.45
1:B:177:MET:SD	1:B:263:ILE:HB	2.56	0.45
1:A:207:GLU:HA	1:A:210:LYS:HD2	2.00	0.44
1:A:440:LYS:HE3	5:A:2265:HOH:O	2.18	0.44
1:B:357:ILE:HG22	1:B:361:HIS:CE1	2.53	0.44
1:B:328:ALA:O	1:B:357:ILE:HD12	2.18	0.43
1:A:293:GLU:OE1	1:A:314:VAL:HG23	2.18	0.43
1:B:153:ILE:H	1:B:153:ILE:HG13	1.74	0.43
1:B:391:LYS:HZ3	1:B:395:ASN:ND2	2.14	0.43
1:A:128:GLN:NE2	5:A:2098:HOH:O	2.51	0.43
1:A:298:LEU:HD22	1:A:303:PRO:HG3	2.00	0.43
1:B:367:TRP:HB2	1:B:371:VAL:HG12	2.00	0.42
1:B:5:MET:HA	1:B:6:PRO:HD3	1.84	0.42
1:B:277:LEU:HD22	1:B:417:MET:HE1	2.02	0.42
1:A:217:ASP:OD1	1:A:255:ARG:NH2	2.32	0.42

Continued on next page...

Continued from previous page...

Atom-1	Atom-2	Interatomic distance (Å)	Clash overlap (Å)
1:A:391:LYS:HE2	1:A:395:ASN:HB2	2.01	0.42
1:B:95:ASN:HD22	1:B:95:ASN:HA	1.76	0.42
1:A:434:LYS:HD3	1:A:440:LYS:CE	2.49	0.42
1:B:453:ILE:HA	1:B:454:PRO:HD3	1.93	0.41
1:A:234:LEU:HG	1:A:238:LEU:HD22	2.03	0.41
1:A:49:THR:HB	1:A:352:GLU:OE1	2.20	0.41
1:A:220:ILE:O	1:A:224:LYS:HG2	2.21	0.41
1:A:60:GLU:OE2	1:A:342:GLY:HA2	2.21	0.41
1:A:173:PHE:HB2	1:A:215:LEU:HD13	2.03	0.40
1:B:366:ILE:HG21	1:B:389:ALA:HB1	2.04	0.40
1:B:400:CYS:HA	2:B:1456:HEM:CHA	2.51	0.40
1:B:234:LEU:HG	1:B:238:LEU:HD22	2.03	0.40

There are no symmetry-related clashes.

5.3 Torsion angles [i](#)

5.3.1 Protein backbone [i](#)

In the following table, the Percentiles column shows the percent Ramachandran outliers of the chain as a percentile score with respect to all X-ray entries followed by that with respect to entries of similar resolution.

The Analysed column shows the number of residues for which the backbone conformation was analysed, and the total number of residues.

Mol	Chain	Analysed	Favoured	Allowed	Outliers	Percentiles	
1	A	431/455 (95%)	413 (96%)	18 (4%)	0	100	100
1	B	433/455 (95%)	421 (97%)	12 (3%)	0	100	100
All	All	864/910 (95%)	834 (96%)	30 (4%)	0	100	100

There are no Ramachandran outliers to report.

5.3.2 Protein sidechains [i](#)

In the following table, the Percentiles column shows the percent sidechain outliers of the chain as a percentile score with respect to all X-ray entries followed by that with respect to entries of similar resolution.

The Analysed column shows the number of residues for which the sidechain conformation was

analysed, and the total number of residues.

Mol	Chain	Analysed	Rotameric	Outliers	Percentiles	
1	A	380/398 (96%)	363 (96%)	17 (4%)	27	27
1	B	381/398 (96%)	364 (96%)	17 (4%)	27	27
All	All	761/796 (96%)	727 (96%)	34 (4%)	27	27

All (34) residues with a non-rotameric sidechain are listed below:

Mol	Chain	Res	Type
1	A	49	THR
1	A	50	ARG
1	A	52	LEU
1	A	97	LYS
1	A	150	LEU
1	A	153	ILE
1	A	167	ARG
1	A	169	GLN
1	A	183	GLU
1	A	186	ASN
1	A	233	LEU
1	A	238	LEU
1	A	255	ARG
1	A	292	GLU
1	A	309	LYS
1	A	385	ILE
1	A	455	LEU
1	B	49	THR
1	B	52	LEU
1	B	89	SER
1	B	110	GLN
1	B	126	LEU
1	B	150	LEU
1	B	153	ILE
1	B	167	ARG
1	B	169	GLN
1	B	174	ILE
1	B	182	ASP
1	B	183	GLU
1	B	215	LEU
1	B	238	LEU
1	B	263	ILE
1	B	288	GLN
1	B	289	LYS

Sometimes sidechains can be flipped to improve hydrogen bonding and reduce clashes. All (23) such sidechains are listed below:

Mol	Chain	Res	Type
1	A	21	ASN
1	A	95	ASN
1	A	100	HIS
1	A	109	GLN
1	A	128	GLN
1	A	159	ASN
1	A	169	GLN
1	A	171	HIS
1	A	310	GLN
1	A	319	ASN
1	A	395	ASN
1	A	403	GLN
1	A	404	GLN
1	A	426	HIS
1	B	95	ASN
1	B	100	HIS
1	B	109	GLN
1	B	110	GLN
1	B	159	ASN
1	B	171	HIS
1	B	213	ASN
1	B	388	HIS
1	B	395	ASN

5.3.3 RNA ⓘ

There are no RNA molecules in this entry.

5.4 Non-standard residues in protein, DNA, RNA chains ⓘ

There are no non-standard protein/DNA/RNA residues in this entry.

5.5 Carbohydrates ⓘ

There are no monosaccharides in this entry.

5.6 Ligand geometry

Of 8 ligands modelled in this entry, 4 are monoatomic - leaving 4 for Mogul analysis.

In the following table, the Counts columns list the number of bonds (or angles) for which Mogul statistics could be retrieved, the number of bonds (or angles) that are observed in the model and the number of bonds (or angles) that are defined in the Chemical Component Dictionary. The Link column lists molecule types, if any, to which the group is linked. The Z score for a bond length (or angle) is the number of standard deviations the observed value is removed from the expected value. A bond length (or angle) with $|Z| > 2$ is considered an outlier worth inspection. RMSZ is the root-mean-square of all Z scores of the bond lengths (or angles).

Mol	Type	Chain	Res	Link	Bond lengths			Bond angles		
					Counts	RMSZ	# Z > 2	Counts	RMSZ	# Z > 2
2	HEM	B	1456	1	42,50,50	1.82	9 (21%)	46,82,82	1.79	14 (30%)
4	DMS	A	1460	-	3,3,3	2.69	1 (33%)	3,3,3	0.73	0
2	HEM	A	1456	1	42,50,50	1.91	7 (16%)	46,82,82	1.61	6 (13%)
4	DMS	B	1458	-	3,3,3	2.82	1 (33%)	3,3,3	0.82	0

In the following table, the Chirals column lists the number of chiral outliers, the number of chiral centers analysed, the number of these observed in the model and the number defined in the Chemical Component Dictionary. Similar counts are reported in the Torsion and Rings columns. '-' means no outliers of that kind were identified.

Mol	Type	Chain	Res	Link	Chirals	Torsions	Rings
2	HEM	B	1456	1	-	2/12/54/54	-
2	HEM	A	1456	1	-	2/12/54/54	-

All (18) bond length outliers are listed below:

Mol	Chain	Res	Type	Atoms	Z	Observed(Å)	Ideal(Å)
2	A	1456	HEM	C3D-C2D	7.65	1.53	1.36
2	B	1456	HEM	C3D-C2D	7.18	1.52	1.36
4	B	1458	DMS	O-S	4.69	1.81	1.50
4	A	1460	DMS	O-S	4.50	1.79	1.50
2	A	1456	HEM	C3C-C4C	3.76	1.46	1.41
2	A	1456	HEM	C3C-C2C	-3.64	1.35	1.40
2	A	1456	HEM	C3C-CAC	3.62	1.55	1.47
2	B	1456	HEM	C3C-CAC	3.16	1.54	1.47
2	B	1456	HEM	C3C-C4C	3.13	1.46	1.41
2	A	1456	HEM	CAB-C3B	2.66	1.54	1.47
2	B	1456	HEM	CAB-C3B	2.44	1.53	1.47
2	B	1456	HEM	C3C-C2C	-2.22	1.37	1.40
2	A	1456	HEM	CMB-C2B	2.16	1.55	1.50

Continued on next page...

Continued from previous page...

Mol	Chain	Res	Type	Atoms	Z	Observed(Å)	Ideal(Å)
2	B	1456	HEM	CMD-C2D	2.10	1.55	1.50
2	B	1456	HEM	CMA-C3A	2.09	1.55	1.51
2	B	1456	HEM	CMC-C2C	2.08	1.56	1.51
2	B	1456	HEM	C3B-C2B	-2.01	1.33	1.37
2	A	1456	HEM	C2C-C1C	2.01	1.47	1.42

All (20) bond angle outliers are listed below:

Mol	Chain	Res	Type	Atoms	Z	Observed(°)	Ideal(°)
2	A	1456	HEM	C4D-ND-C1D	5.35	111.54	105.21
2	B	1456	HEM	C4D-ND-C1D	5.14	111.29	105.21
2	B	1456	HEM	C3B-C4B-NB	-3.51	106.95	109.47
2	A	1456	HEM	CBD-CAD-C3D	-3.38	103.20	112.53
2	A	1456	HEM	C4B-CHC-C1C	3.15	126.72	122.56
2	A	1456	HEM	C1B-NB-C4B	2.84	108.57	105.21
2	B	1456	HEM	C1B-NB-C4B	2.84	108.57	105.21
2	A	1456	HEM	C4C-CHD-C1D	2.79	126.24	122.56
2	B	1456	HEM	C4C-CHD-C1D	2.64	126.04	122.56
2	B	1456	HEM	CHB-C1B-NB	2.63	127.63	124.37
2	B	1456	HEM	CBD-CAD-C3D	-2.41	105.86	112.53
2	B	1456	HEM	C4B-CHC-C1C	2.38	125.70	122.56
2	B	1456	HEM	CMD-C2D-C1D	2.37	128.74	125.03
2	A	1456	HEM	CHD-C1D-ND	2.28	126.89	124.44
2	B	1456	HEM	CHA-C4D-ND	2.28	127.19	124.37
2	B	1456	HEM	CMA-C3A-C4A	-2.17	125.28	128.46
2	B	1456	HEM	C3B-C2B-C1B	2.13	108.01	106.41
2	B	1456	HEM	CHC-C4B-C3B	2.11	127.81	124.57
2	B	1456	HEM	C2C-C3C-C4C	2.04	108.32	106.90
2	B	1456	HEM	C3C-C4C-NC	-2.04	107.10	110.94

There are no chirality outliers.

All (4) torsion outliers are listed below:

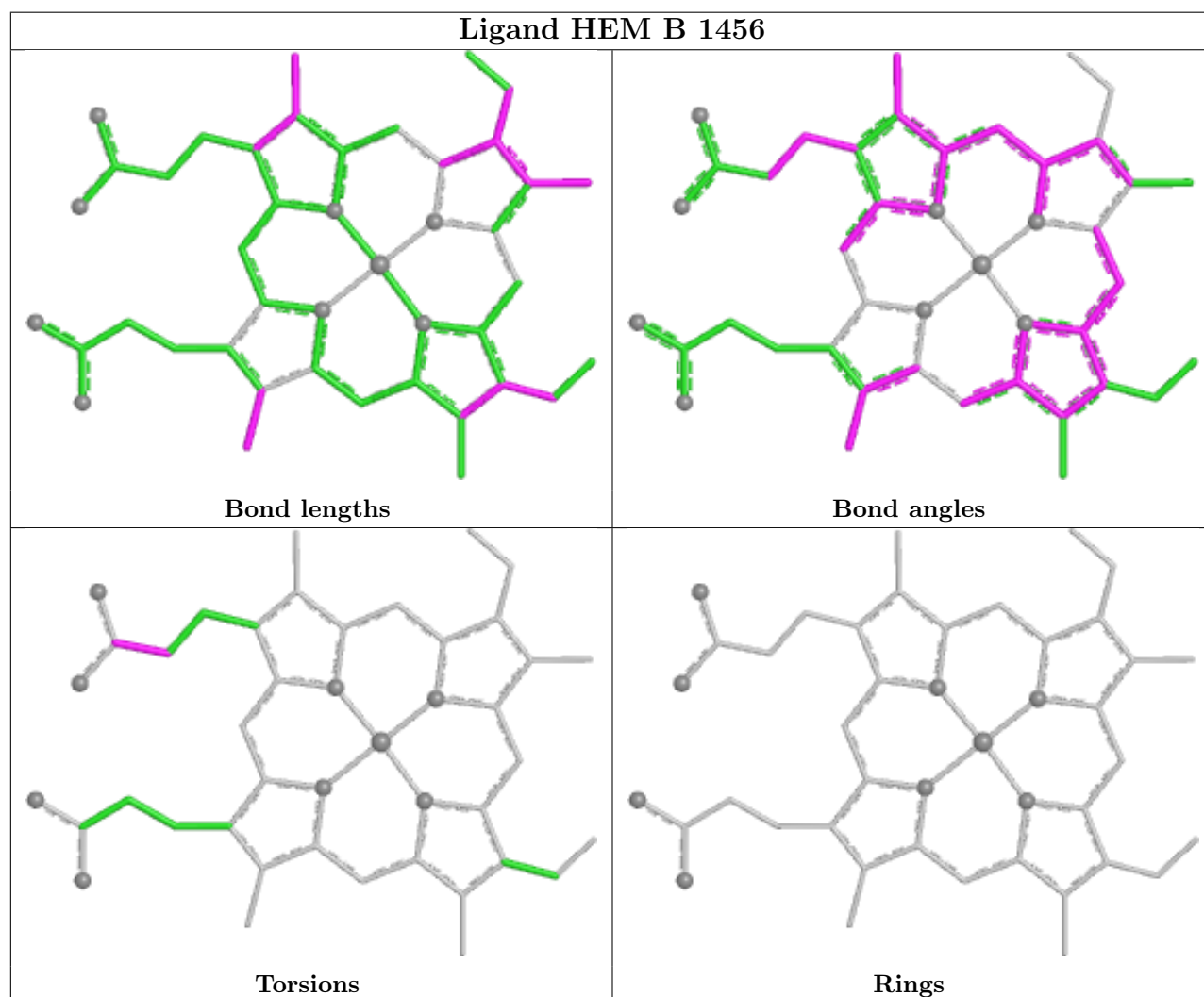
Mol	Chain	Res	Type	Atoms
2	A	1456	HEM	CAD-CBD-CGD-O1D
2	B	1456	HEM	CAD-CBD-CGD-O1D
2	B	1456	HEM	CAD-CBD-CGD-O2D
2	A	1456	HEM	CAD-CBD-CGD-O2D

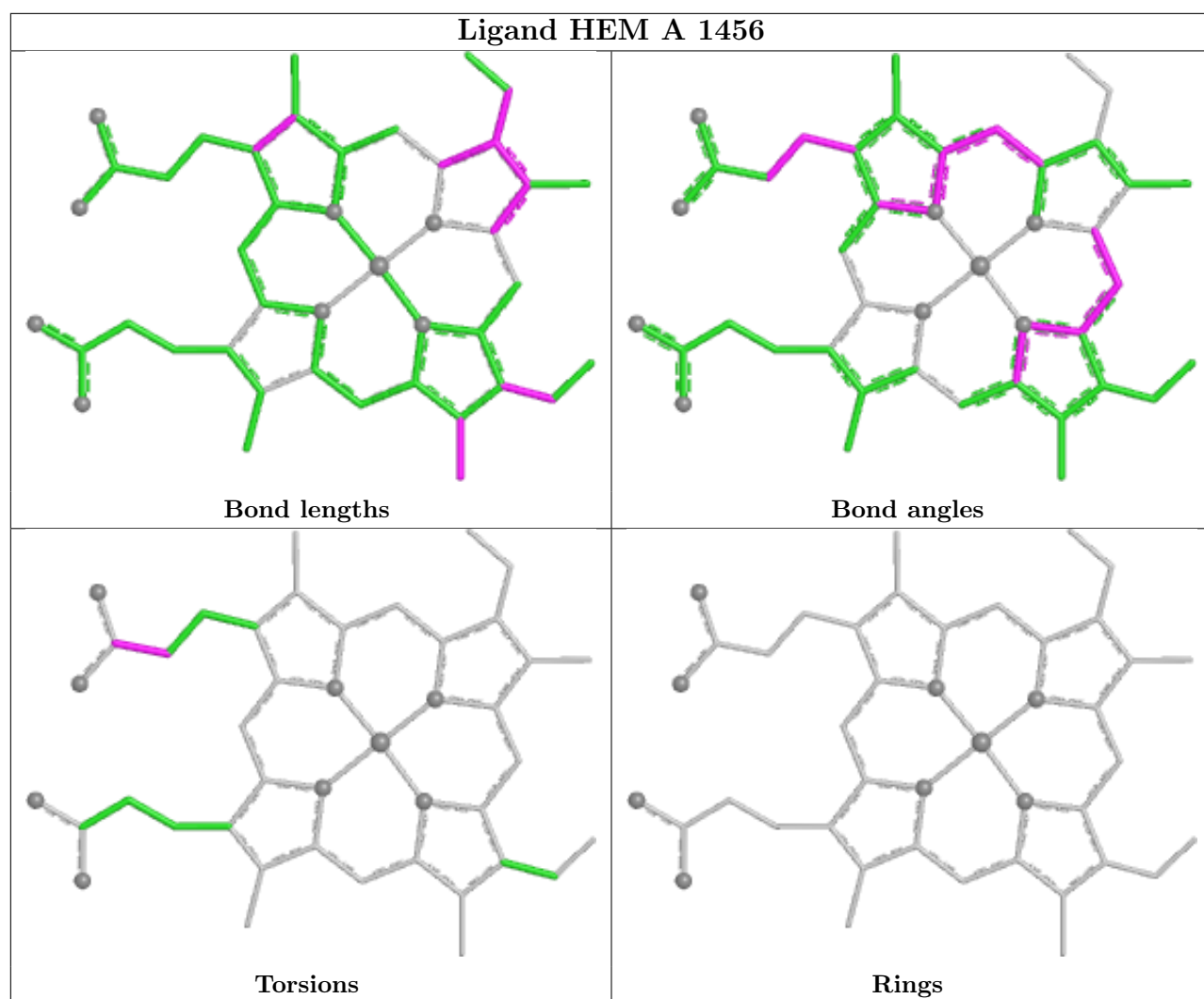
There are no ring outliers.

1 monomer is involved in 1 short contact:

Mol	Chain	Res	Type	Clashes	Symm-Clashes
2	B	1456	HEM	1	0

The following is a two-dimensional graphical depiction of Mogul quality analysis of bond lengths, bond angles, torsion angles, and ring geometry for all instances of the Ligand of Interest. In addition, ligands with molecular weight > 250 and outliers as shown on the validation Tables will also be included. For torsion angles, if less than 5% of the Mogul distribution of torsion angles is within 10 degrees of the torsion angle in question, then that torsion angle is considered an outlier. Any bond that is central to one or more torsion angles identified as an outlier by Mogul will be highlighted in the graph. For rings, the root-mean-square deviation (RMSD) between the ring in question and similar rings identified by Mogul is calculated over all ring torsion angles. If the average RMSD is greater than 60 degrees and the minimal RMSD between the ring in question and any Mogul-identified rings is also greater than 60 degrees, then that ring is considered an outlier. The outliers are highlighted in purple. The color gray indicates Mogul did not find sufficient equivalents in the CSD to analyse the geometry.





5.7 Other polymers [i](#)

There are no such residues in this entry.

5.8 Polymer linkage issues [i](#)

There are no chain breaks in this entry.

6 Fit of model and data ⓘ

6.1 Protein, DNA and RNA chains ⓘ

In the following table, the column labelled ‘#RSRZ > 2’ contains the number (and percentage) of RSRZ outliers, followed by percent RSRZ outliers for the chain as percentile scores relative to all X-ray entries and entries of similar resolution. The OWAB column contains the minimum, median, 95th percentile and maximum values of the occupancy-weighted average B-factor per residue. The column labelled ‘Q < 0.9’ lists the number of (and percentage) of residues with an average occupancy less than 0.9.

Mol	Chain	Analysed	<RSRZ>	#RSRZ>2	OWAB(Å ²)	Q<0.9
1	A	437/455 (96%)	0.11	24 (5%) 25 31	10, 21, 53, 69	0
1	B	439/455 (96%)	0.06	17 (3%) 39 45	10, 20, 47, 64	0
All	All	876/910 (96%)	0.09	41 (4%) 31 37	10, 21, 50, 69	0

All (41) RSRZ outliers are listed below:

Mol	Chain	Res	Type	RSRZ
1	A	205	PHE	6.4
1	B	205	PHE	5.5
1	B	209	ILE	5.4
1	A	187	LYS	4.9
1	A	186	ASN	4.5
1	A	178	VAL	4.4
1	A	204	GLN	4.1
1	B	1	THR	4.1
1	A	181	LEU	4.0
1	A	203	ARG	3.8
1	B	136	ASP	3.6
1	B	182	ASP	3.5
1	A	209	ILE	3.3
1	A	207	GLU	3.3
1	A	173	PHE	3.3
1	B	184	ALA	2.9
1	B	92	HIS	2.9
1	B	203	ARG	2.9
1	A	183	GLU	2.9
1	B	226	SER	2.8
1	A	208	ASP	2.8
1	A	174	ILE	2.8
1	A	182	ASP	2.7
1	A	251	ASP	2.6

Continued on next page...

Continued from previous page...

Mol	Chain	Res	Type	RSRZ
1	A	169	GLN	2.6
1	A	179	ARG	2.6
1	A	1	THR	2.5
1	A	184	ALA	2.5
1	B	186	ASN	2.4
1	B	94	LYS	2.4
1	A	188	LEU	2.4
1	B	169	GLN	2.3
1	B	177	MET	2.3
1	A	2	ILE	2.3
1	A	13	GLU	2.3
1	B	2	ILE	2.3
1	A	17	LEU	2.2
1	B	210	LYS	2.2
1	B	178	VAL	2.1
1	B	201	ASN	2.1
1	A	46	GLY	2.0

6.2 Non-standard residues in protein, DNA, RNA chains [i](#)

There are no non-standard protein/DNA/RNA residues in this entry.

6.3 Carbohydrates [i](#)

There are no monosaccharides in this entry.

6.4 Ligands [i](#)

In the following table, the Atoms column lists the number of modelled atoms in the group and the number defined in the chemical component dictionary. The B-factors column lists the minimum, median, 95th percentile and maximum values of B factors of atoms in the group. The column labelled 'Q< 0.9' lists the number of atoms with occupancy less than 0.9.

Mol	Type	Chain	Res	Atoms	RSCC	RSR	B-factors(\AA^2)	Q<0.9
4	DMS	A	1460	4/4	0.77	0.26	59,59,59,59	0
4	DMS	B	1458	4/4	0.79	0.23	55,55,56,56	0
3	ZN	A	1458	1/1	0.83	0.17	67,67,67,67	0
2	HEM	A	1456	43/43	0.98	0.11	9,12,15,17	0
3	ZN	B	1457	1/1	0.98	0.10	21,21,21,21	0
2	HEM	B	1456	43/43	0.99	0.10	8,11,15,20	0

Continued on next page...

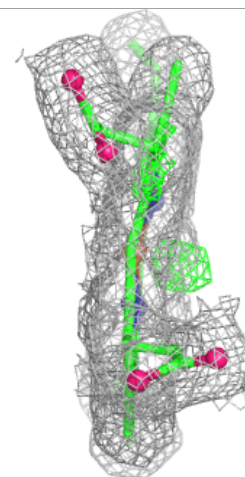
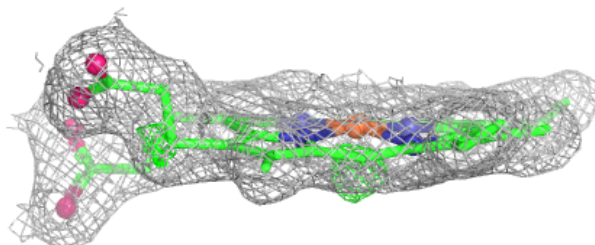
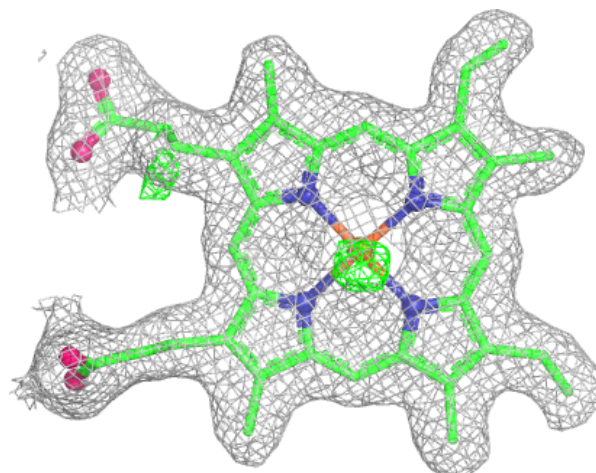
Continued from previous page...

Mol	Type	Chain	Res	Atoms	RSCC	RSR	B-factors(\AA^2)	Q<0.9
3	ZN	A	1459	1/1	1.00	0.09	23,23,23,23	0
3	ZN	A	1457	1/1	1.00	0.06	23,23,23,23	0

The following is a graphical depiction of the model fit to experimental electron density of all instances of the Ligand of Interest. In addition, ligands with molecular weight > 250 and outliers as shown on the geometry validation Tables will also be included. Each fit is shown from different orientation to approximate a three-dimensional view.

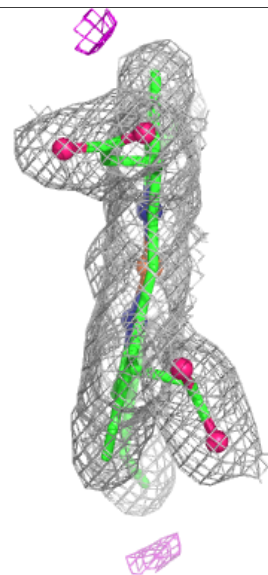
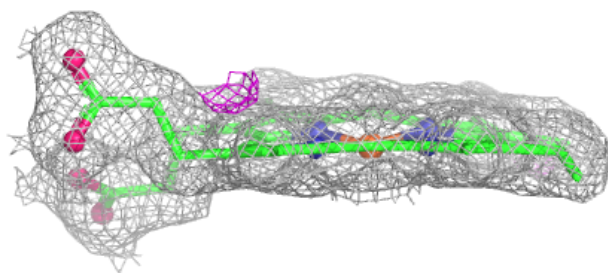
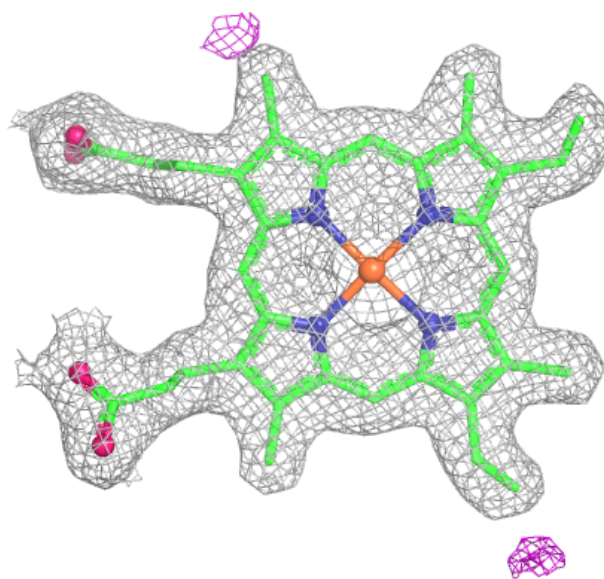
Electron density around HEM A 1456:

2mF_o-DF_c (at 0.7 rmsd) in gray
mF_o-DF_c (at 3 rmsd) in purple (negative)
and green (positive)



Electron density around HEM B 1456:

$2mF_o-DF_c$ (at 0.7 rmsd) in gray
 mF_o-DF_c (at 3 rmsd) in purple (negative)
and green (positive)



6.5 Other polymers [i](#)

There are no such residues in this entry.