



## Full wwPDB EM Validation Report ⓘ

May 5, 2025 – 10:33 PM EDT

PDB ID : 5WEM / pdb\_00005wem  
EMDB ID : EMD-8821  
Title : GluA2 bound to GSG1L in digitonin, state 1  
Authors : Twomey, E.C.; Yelshanskaya, M.V.; Grassucci, R.A.; Frank, J.; Sobolevsky, A.I.  
Deposited on : 2017-07-10  
Resolution : 6.10 Å(reported)

This is a Full wwPDB EM Validation Report for a publicly released PDB entry.

We welcome your comments at [validation@mail.wwpdb.org](mailto:validation@mail.wwpdb.org)

A user guide is available at

<https://www.wwpdb.org/validation/2017/EMValidationReportHelp>  
with specific help available everywhere you see the ⓘ symbol.

The types of validation reports are described at

<http://www.wwpdb.org/validation/2017/FAQs#types>.

---

The following versions of software and data (see [references ⓘ](#)) were used in the production of this report:

EMDB validation analysis : 0.0.1.dev118  
MolProbity : 4-5-2 with Phenix2.0rc1  
Percentile statistics : 20231227.v01 (using entries in the PDB archive December 27th 2023)  
MapQ : 1.9.13  
Ideal geometry (proteins) : Engh & Huber (2001)  
Ideal geometry (DNA, RNA) : Parkinson et al. (1996)  
Validation Pipeline (wwPDB-VP) : 2.43.1

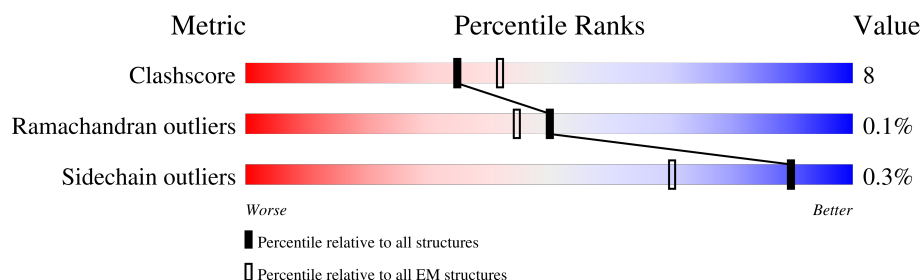
# 1 Overall quality at a glance

The following experimental techniques were used to determine the structure:

*ELECTRON MICROSCOPY*

The reported resolution of this entry is 6.10 Å.

Percentile scores (ranging between 0-100) for global validation metrics of the entry are shown in the following graphic. The table shows the number of entries on which the scores are based.



Metric	Whole archive (#Entries)	EM structures (#Entries)
Clashscore	210492	15764
Ramachandran outliers	207382	16835
Sidechain outliers	206894	16415

The table below summarises the geometric issues observed across the polymeric chains and their fit to the map. The red, orange, yellow and green segments of the bar indicate the fraction of residues that contain outliers for  $\geq 3$ , 2, 1 and 0 types of geometric quality criteria respectively. A grey segment represents the fraction of residues that are not modelled. The numeric value for each fraction is indicated below the corresponding segment, with a dot representing fractions  $\leq 5\%$ . The upper red bar (where present) indicates the fraction of residues that have poor fit to the EM map (all-atom inclusion  $< 40\%$ ). The numeric value is given above the bar.

Mol	Chain	Length	Quality of chain
1	A	1057	<div> <div>13%</div> <div>71%</div> <div>20%</div> <div>9%</div> </div>
1	B	1057	<div> <div>7%</div> <div>57%</div> <div>16%</div> <div>26%</div> </div>
1	C	1057	<div> <div>13%</div> <div>71%</div> <div>20%</div> <div>9%</div> </div>
1	D	1057	<div> <div>9%</div> <div>58%</div> <div>15%</div> <div>26%</div> </div>

## 2 Entry composition

There is only 1 type of molecule in this entry. The entry contains 27360 atoms, of which 0 are hydrogens and 0 are deuteriums.

In the tables below, the AltConf column contains the number of residues with at least one atom in alternate conformation and the Trace column contains the number of residues modelled with at most 2 atoms.

- Molecule 1 is a protein called Chimera of Glutamate receptor 2, Germ cell-specific gene 1-like protein.

Mol	Chain	Residues	Atoms					AltConf	Trace
1	A	962	Total	C	N	O	S	0	0
			7555	4864	1248	1401	42		
1	B	780	Total	C	N	O	S	0	0
			6125	3932	1011	1152	30		
1	C	962	Total	C	N	O	S	0	0
			7555	4864	1248	1401	42		
1	D	780	Total	C	N	O	S	0	0
			6125	3932	1011	1152	30		

There are 60 discrepancies between the modelled and reference sequences:

Chain	Residue	Modelled	Actual	Comment	Reference
A	241	GLU	ASN	engineered mutation	UNP P19491
A	382	LEU	VAL	engineered mutation	UNP P19491
A	?	-	LEU	deletion	UNP P19491
A	?	-	THR	deletion	UNP P19491
A	?	-	GLU	deletion	UNP P19491
A	?	-	LEU	deletion	UNP P19491
A	?	-	PRO	deletion	UNP P19491
A	?	-	SER	deletion	UNP P19491
A	384	GLU	GLY	engineered mutation	UNP P19491
A	385	ASP	ASN	engineered mutation	UNP P19491
A	392	GLN	ASN	engineered mutation	UNP P19491
A	827	GLY	-	linker	UNP P19491
A	828	THR	-	linker	UNP P19491
A	829	GLY	-	linker	UNP P19491
A	1151	LEU	VAL	engineered mutation	UNP D3Z7H4
B	241	GLU	ASN	engineered mutation	UNP P19491
B	382	LEU	VAL	engineered mutation	UNP P19491
B	?	-	LEU	deletion	UNP P19491
B	?	-	THR	deletion	UNP P19491
B	?	-	GLU	deletion	UNP P19491
B	?	-	LEU	deletion	UNP P19491

*Continued on next page...*

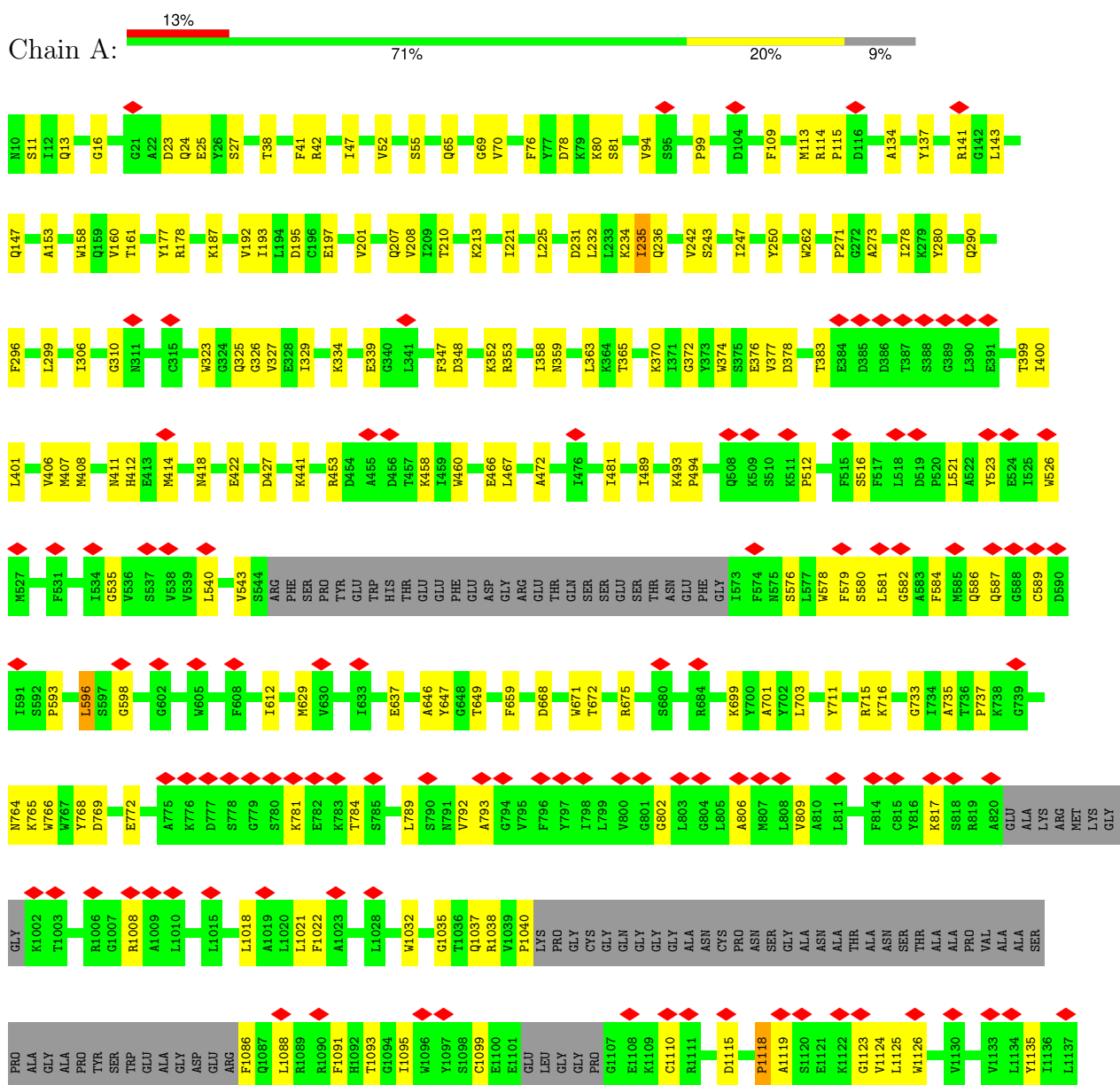
*Continued from previous page...*

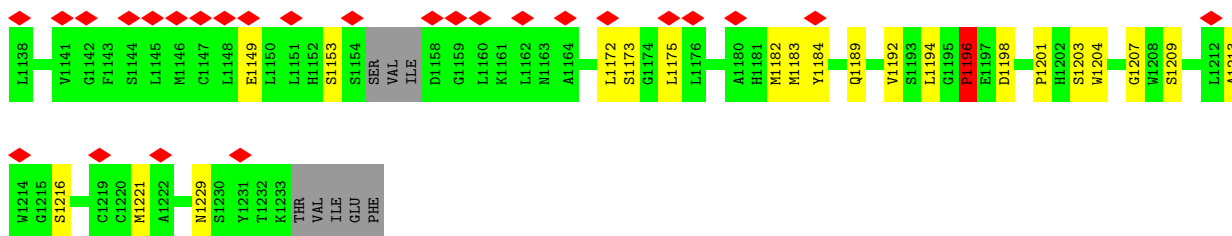
Chain	Residue	Modelled	Actual	Comment	Reference
B	?	-	PRO	deletion	UNP P19491
B	?	-	SER	deletion	UNP P19491
B	384	GLU	GLY	engineered mutation	UNP P19491
B	385	ASP	ASN	engineered mutation	UNP P19491
B	392	GLN	ASN	engineered mutation	UNP P19491
B	827	GLY	-	linker	UNP P19491
B	828	THR	-	linker	UNP P19491
B	829	GLY	-	linker	UNP P19491
B	1151	LEU	VAL	engineered mutation	UNP D3Z7H4
C	241	GLU	ASN	engineered mutation	UNP P19491
C	382	LEU	VAL	engineered mutation	UNP P19491
C	?	-	LEU	deletion	UNP P19491
C	?	-	THR	deletion	UNP P19491
C	?	-	GLU	deletion	UNP P19491
C	?	-	LEU	deletion	UNP P19491
C	?	-	PRO	deletion	UNP P19491
C	?	-	SER	deletion	UNP P19491
C	384	GLU	GLY	engineered mutation	UNP P19491
C	385	ASP	ASN	engineered mutation	UNP P19491
C	392	GLN	ASN	engineered mutation	UNP P19491
C	827	GLY	-	linker	UNP P19491
C	828	THR	-	linker	UNP P19491
C	829	GLY	-	linker	UNP P19491
C	1151	LEU	VAL	engineered mutation	UNP D3Z7H4
D	241	GLU	ASN	engineered mutation	UNP P19491
D	382	LEU	VAL	engineered mutation	UNP P19491
D	?	-	LEU	deletion	UNP P19491
D	?	-	THR	deletion	UNP P19491
D	?	-	GLU	deletion	UNP P19491
D	?	-	LEU	deletion	UNP P19491
D	?	-	PRO	deletion	UNP P19491
D	?	-	SER	deletion	UNP P19491
D	384	GLU	GLY	engineered mutation	UNP P19491
D	385	ASP	ASN	engineered mutation	UNP P19491
D	392	GLN	ASN	engineered mutation	UNP P19491
D	827	GLY	-	linker	UNP P19491
D	828	THR	-	linker	UNP P19491
D	829	GLY	-	linker	UNP P19491
D	1151	LEU	VAL	engineered mutation	UNP D3Z7H4

### 3 Residue-property plots

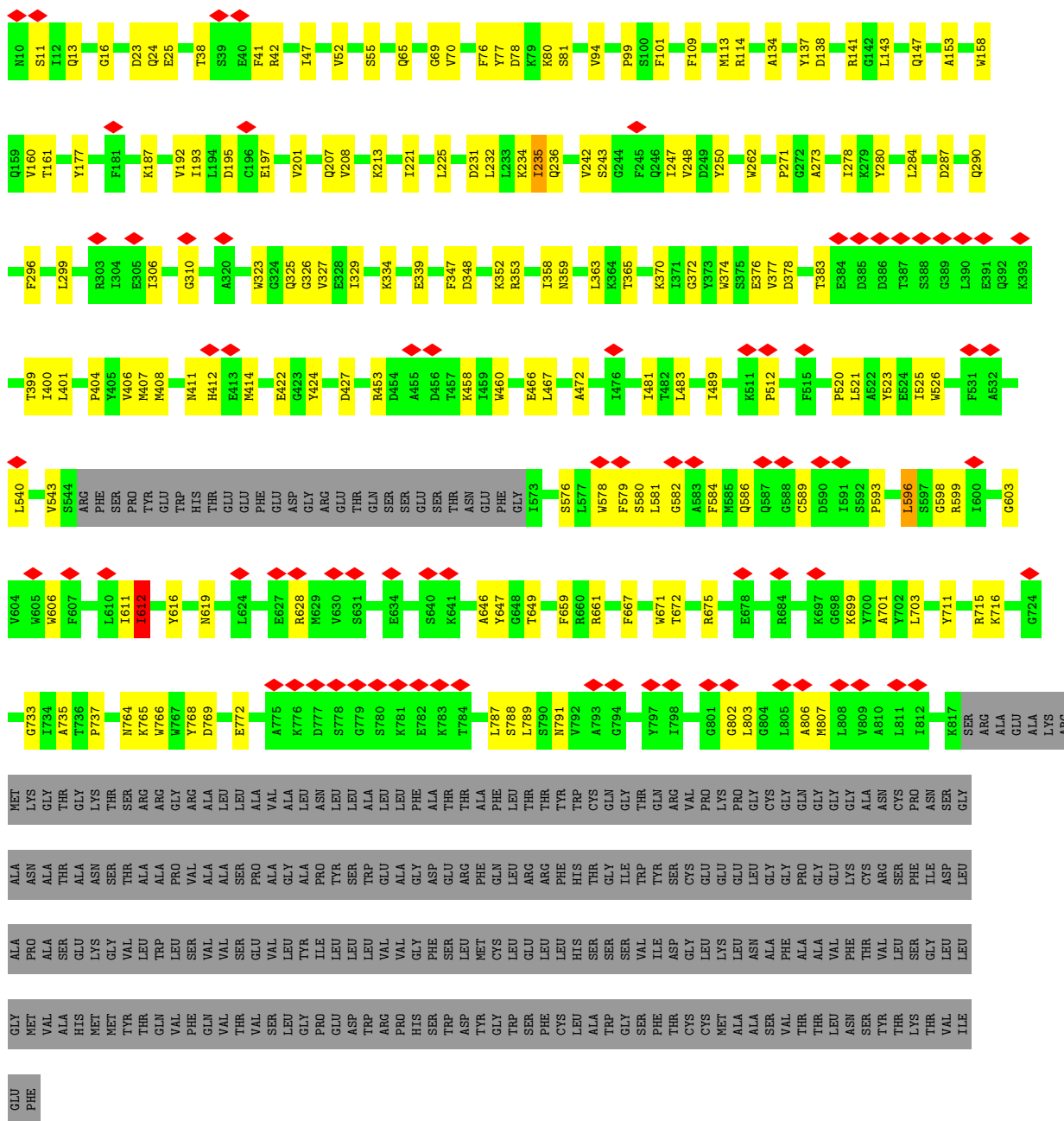
These plots are drawn for all protein, RNA, DNA and oligosaccharide chains in the entry. The first graphic for a chain summarises the proportions of the various outlier classes displayed in the second graphic. The second graphic shows the sequence view annotated by issues in geometry and atom inclusion in map density. Residues are color-coded according to the number of geometric quality criteria for which they contain at least one outlier: green = 0, yellow = 1, orange = 2 and red = 3 or more. A red diamond above a residue indicates a poor fit to the EM map for this residue (all-atom inclusion < 40%). Stretches of 2 or more consecutive residues without any outlier are shown as a green connector. Residues present in the sample, but not in the model, are shown in grey.

- Molecule 1: Chimera of Glutamate receptor 2, Germ cell-specific gene 1-like protein

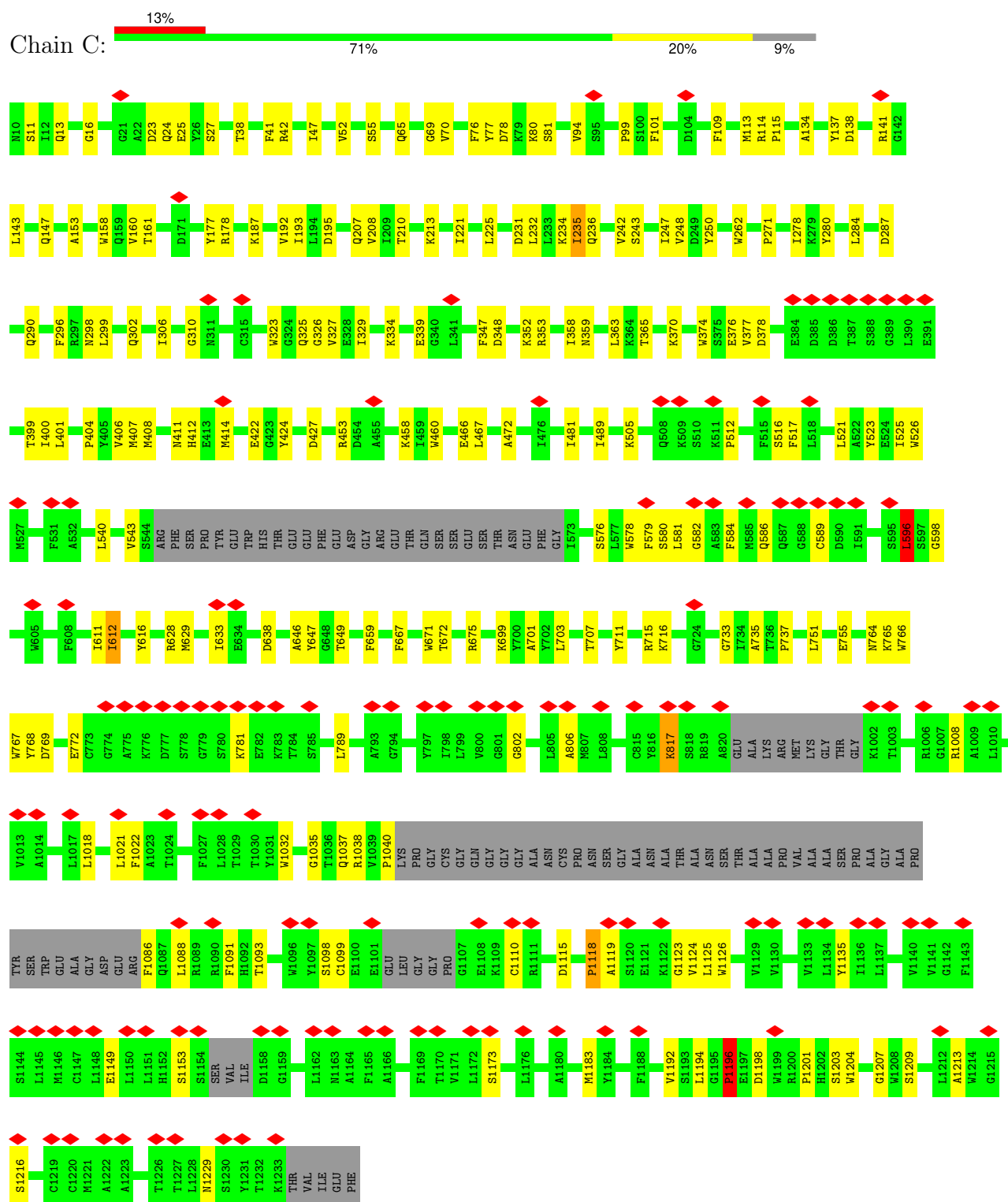




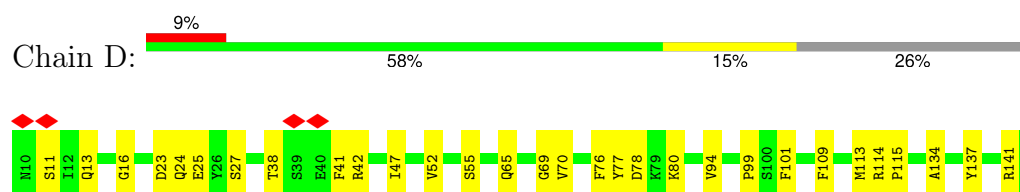
- Molecule 1: Chimera of Glutamate receptor 2, Germ cell-specific gene 1-like protein

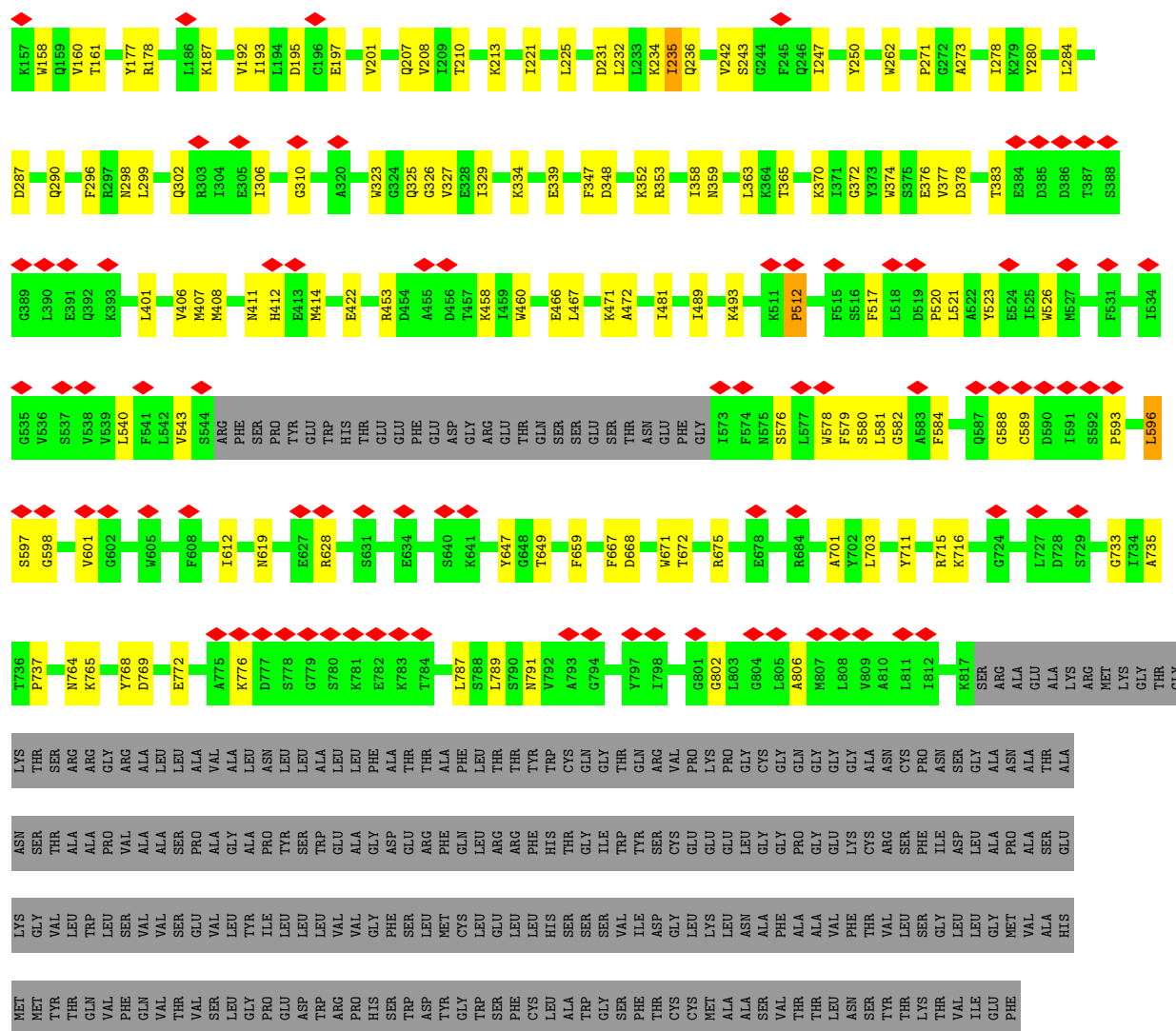


- Molecule 1: Chimera of Glutamate receptor 2, Germ cell-specific gene 1-like protein



- Molecule 1: Chimera of Glutamate receptor 2, Germ cell-specific gene 1-like protein







## 4 Experimental information

Property	Value	Source
EM reconstruction method	SINGLE PARTICLE	Depositor
Imposed symmetry	POINT, C2	Depositor
Number of particles used	20392	Depositor
Resolution determination method	FSC 0.143 CUT-OFF	Depositor
CTF correction method	PHASE FLIPPING AND AMPLITUDE CORRECTION	Depositor
Microscope	FEI POLARA 300	Depositor
Voltage (kV)	300	Depositor
Electron dose ( $e^-/\text{\AA}^2$ )	67	Depositor
Minimum defocus (nm)	Not provided	
Maximum defocus (nm)	Not provided	
Magnification	Not provided	
Image detector	GATAN K2 SUMMIT (4k x 4k)	Depositor
Maximum map value	0.067	Depositor
Minimum map value	-0.039	Depositor
Average map value	0.001	Depositor
Map value standard deviation	0.004	Depositor
Recommended contour level	0.019	Depositor
Map size (Å)	294.0, 294.0, 294.0	wwPDB
Map dimensions	300, 300, 300	wwPDB
Map angles (°)	90.0, 90.0, 90.0	wwPDB
Pixel spacing (Å)	0.98, 0.98, 0.98	Depositor

## 5 Model quality

### 5.1 Standard geometry

The Z score for a bond length (or angle) is the number of standard deviations the observed value is removed from the expected value. A bond length (or angle) with  $|Z| > 5$  is considered an outlier worth inspection. RMSZ is the root-mean-square of all Z scores of the bond lengths (or angles).

Mol	Chain	Bond lengths		Bond angles	
		RMSZ	# Z  >5	RMSZ	# Z  >5
1	A	0.27	2/7718 (0.0%)	0.56	2/10438 (0.0%)
1	B	0.23	1/6253 (0.0%)	0.54	0/8450
1	C	0.28	2/7718 (0.0%)	0.56	4/10438 (0.0%)
1	D	0.24	1/6253 (0.0%)	0.55	2/8450 (0.0%)
All	All	0.26	6/27942 (0.0%)	0.55	8/37776 (0.0%)

Chiral center outliers are detected by calculating the chiral volume of a chiral center and verifying if the center is modelled as a planar moiety or with the opposite hand. A planarity outlier is detected by checking planarity of atoms in a peptide group, atoms in a mainchain group or atoms of a sidechain that are expected to be planar.

Mol	Chain	#Chirality outliers	#Planarity outliers
1	A	0	8
1	B	0	4
1	C	0	7
1	D	0	3
All	All	0	22

All (6) bond length outliers are listed below:

Mol	Chain	Res	Type	Atoms	Z	Observed(Å)	Ideal(Å)
1	C	612	ILE	C-N	13.33	1.50	1.33
1	A	612	ILE	C-N	-12.43	1.19	1.33
1	D	612	ILE	C-N	8.03	1.43	1.33
1	B	612	ILE	C-N	-6.78	1.25	1.34
1	A	792	VAL	C-N	6.28	1.43	1.33
1	C	505	LYS	C-N	-5.76	1.24	1.33

All (8) bond angle outliers are listed below:

Mol	Chain	Res	Type	Atoms	Z	Observed(°)	Ideal(°)
1	A	1196	PRO	CA-C-N	5.68	129.34	120.82
1	A	1196	PRO	C-N-CA	5.68	129.34	120.82

*Continued on next page...*

*Continued from previous page...*

Mol	Chain	Res	Type	Atoms	Z	Observed(°)	Ideal(°)
1	C	1196	PRO	CA-C-N	5.67	129.33	120.82
1	C	1196	PRO	C-N-CA	5.67	129.33	120.82
1	D	512	PRO	CA-C-N	-5.67	110.30	121.41
1	D	512	PRO	C-N-CA	-5.67	110.30	121.41
1	C	817	LYS	O-C-N	-5.59	116.34	122.38
1	C	596	LEU	CA-CB-CG	5.01	133.84	116.30

There are no chirality outliers.

All (22) planarity outliers are listed below:

Mol	Chain	Res	Type	Group
1	A	1118	PRO	Peptide
1	A	1196	PRO	Peptide
1	A	1203	SER	Peptide
1	A	1207	GLY	Peptide
1	A	378	ASP	Peptide
1	A	593	PRO	Peptide
1	A	781	LYS	Peptide
1	A	817	LYS	Mainchain
1	B	378	ASP	Peptide
1	B	512	PRO	Peptide
1	B	593	PRO	Peptide
1	B	612	ILE	Mainchain
1	C	1118	PRO	Peptide
1	C	1196	PRO	Peptide
1	C	1203	SER	Peptide
1	C	1207	GLY	Peptide
1	C	378	ASP	Peptide
1	C	781	LYS	Peptide
1	C	817	LYS	Mainchain
1	D	378	ASP	Peptide
1	D	512	PRO	Peptide
1	D	593	PRO	Peptide

## 5.2 Too-close contacts ⓘ

In the following table, the Non-H and H(model) columns list the number of non-hydrogen atoms and hydrogen atoms in the chain respectively. The H(added) column lists the number of hydrogen atoms added and optimized by MolProbity. The Clashes column lists the number of clashes within the asymmetric unit, whereas Symm-Clashes lists symmetry-related clashes.

Mol	Chain	Non-H	H(model)	H(added)	Clashes	Symm-Clashes
1	A	7555	0	7536	123	0
1	B	6125	0	6110	109	0
1	C	7555	0	7536	129	0
1	D	6125	0	6110	97	0
All	All	27360	0	27292	426	0

The all-atom clashscore is defined as the number of clashes found per 1000 atoms (including hydrogen atoms). The all-atom clashscore for this structure is 8.

All (426) close contacts within the same asymmetric unit are listed below, sorted by their clash magnitude.

Atom-1	Atom-2	Interatomic distance (Å)	Clash overlap (Å)
1:B:606:TRP:HZ2	1:C:586:GLN:H	1.27	0.78
1:D:596:LEU:HD22	1:D:598:GLY:H	1.55	0.71
1:C:596:LEU:HD22	1:C:598:GLY:H	1.55	0.71
1:A:596:LEU:HD22	1:A:598:GLY:H	1.55	0.70
1:B:596:LEU:HD22	1:B:598:GLY:H	1.55	0.70
1:A:806:ALA:HB2	1:D:601:VAL:HG21	1.74	0.69
1:A:512:PRO:HG2	1:A:516:SER:HB3	1.77	0.66
1:C:376:GLU:HG3	1:C:377:VAL:HG13	1.80	0.64
1:A:376:GLU:HG3	1:A:377:VAL:HG13	1.80	0.64
1:A:16:GLY:H	1:A:65:GLN:HE22	1.46	0.63
1:C:143:LEU:HD21	1:D:147:GLN:HE21	1.63	0.63
1:D:376:GLU:HG3	1:D:377:VAL:HG13	1.80	0.63
1:C:147:GLN:HE21	1:D:143:LEU:HD21	1.63	0.63
1:B:525:ILE:HG12	1:C:789:LEU:HD13	1.79	0.63
1:C:16:GLY:H	1:C:65:GLN:HE22	1.46	0.63
1:D:16:GLY:H	1:D:65:GLN:HE22	1.46	0.63
1:A:99:PRO:HA	1:A:113:MET:HB2	1.81	0.62
1:B:483:LEU:HD13	1:C:751:LEU:HB2	1.81	0.62
1:C:99:PRO:HA	1:C:113:MET:HB2	1.81	0.62
1:B:16:GLY:H	1:B:65:GLN:HE22	1.46	0.62
1:B:99:PRO:HA	1:B:113:MET:HB2	1.82	0.62
1:B:376:GLU:HG3	1:B:377:VAL:HG13	1.80	0.62
1:D:177:TYR:HD2	1:D:207:GLN:HG3	1.65	0.62
1:C:177:TYR:HD2	1:C:207:GLN:HG3	1.65	0.61
1:C:512:PRO:HG2	1:C:516:SER:HB3	1.81	0.61
1:C:1118:PRO:HD3	1:C:1194:LEU:HD21	1.83	0.61
1:A:629:MET:HE1	1:C:629:MET:HE1	1.82	0.61
1:B:579:PHE:HD1	1:B:589:CYS:HB2	1.66	0.61
1:B:177:TYR:HD2	1:B:207:GLN:HG3	1.65	0.60
1:D:99:PRO:HA	1:D:113:MET:HB2	1.81	0.60

*Continued on next page...*

*Continued from previous page...*

Atom-1	Atom-2	Interatomic distance (Å)	Clash overlap (Å)
1:A:177:TYR:HD2	1:A:207:GLN:HG3	1.65	0.60
1:A:1118:PRO:HD3	1:A:1194:LEU:HD21	1.83	0.60
1:C:579:PHE:HD1	1:C:589:CYS:HB2	1.66	0.60
1:A:193:ILE:HG12	1:A:221:ILE:HB	1.84	0.60
1:C:525:ILE:HG12	1:D:789:LEU:HD13	1.84	0.60
1:C:193:ILE:HG12	1:C:221:ILE:HB	1.84	0.59
1:B:520:PRO:O	1:B:619:ASN:ND2	2.36	0.59
1:B:193:ILE:HG12	1:B:221:ILE:HB	1.84	0.59
1:A:579:PHE:HD1	1:A:589:CYS:HB2	1.66	0.58
1:D:193:ILE:HG12	1:D:221:ILE:HB	1.84	0.58
1:D:579:PHE:HD1	1:D:589:CYS:HB2	1.66	0.58
1:A:1182:MET:HE1	1:B:789:LEU:HD21	1.85	0.58
1:C:137:TYR:HA	1:C:195:ASP:HB3	1.86	0.58
1:D:137:TYR:HA	1:D:195:ASP:HB3	1.86	0.58
1:C:581:LEU:HA	1:C:584:PHE:HB2	1.86	0.57
1:A:94:VAL:HG22	1:A:323:TRP:HE1	1.69	0.57
1:B:137:TYR:HA	1:B:195:ASP:HB3	1.86	0.57
1:C:94:VAL:HG22	1:C:323:TRP:HE1	1.70	0.57
1:A:137:TYR:HA	1:A:195:ASP:HB3	1.86	0.57
1:A:1124:VAL:HG13	1:A:1183:MET:HE3	1.86	0.57
1:B:94:VAL:HG22	1:B:323:TRP:HE1	1.69	0.57
1:D:581:LEU:HA	1:D:584:PHE:HB2	1.86	0.57
1:C:649:THR:HG22	1:C:703:LEU:HB2	1.87	0.56
1:A:1035:GLY:HA3	1:A:1091:PHE:HB2	1.88	0.56
1:B:69:GLY:HA3	1:B:310:GLY:HA2	1.88	0.56
1:B:578:TRP:O	1:B:582:GLY:N	2.38	0.56
1:D:134:ALA:HB3	1:D:192:VAL:HG22	1.87	0.56
1:A:578:TRP:O	1:A:582:GLY:N	2.38	0.56
1:B:649:THR:HG22	1:B:703:LEU:HB2	1.87	0.56
1:A:581:LEU:HA	1:A:584:PHE:HB2	1.86	0.56
1:D:94:VAL:HG22	1:D:323:TRP:HE1	1.70	0.56
1:C:578:TRP:O	1:C:582:GLY:N	2.38	0.56
1:A:69:GLY:HA3	1:A:310:GLY:HA2	1.88	0.56
1:B:581:LEU:HA	1:B:584:PHE:HB2	1.86	0.56
1:A:134:ALA:HB3	1:A:192:VAL:HG22	1.87	0.55
1:A:1189:GLN:NE2	1:B:788:SER:OG	2.39	0.55
1:C:1035:GLY:HA3	1:C:1091:PHE:HB2	1.88	0.55
1:D:578:TRP:O	1:D:582:GLY:N	2.38	0.55
1:B:134:ALA:HB3	1:B:192:VAL:HG22	1.87	0.55
1:C:659:PHE:HB3	1:C:671:TRP:HB2	1.89	0.55
1:D:69:GLY:HA3	1:D:310:GLY:HA2	1.88	0.55

*Continued on next page...*

*Continued from previous page...*

Atom-1	Atom-2	Interatomic distance (Å)	Clash overlap (Å)
1:B:599:ARG:O	1:C:578:TRP:NE1	2.39	0.55
1:D:659:PHE:HB3	1:D:671:TRP:HB2	1.89	0.55
1:A:649:THR:HG22	1:A:703:LEU:HB2	1.87	0.55
1:A:659:PHE:HB3	1:A:671:TRP:HB2	1.89	0.55
1:C:134:ALA:HB3	1:C:192:VAL:HG22	1.87	0.55
1:C:1124:VAL:HG13	1:C:1183:MET:HE3	1.87	0.55
1:C:1037:GLN:NE2	1:C:1198:ASP:O	2.40	0.55
1:B:612:ILE:O	1:B:616:TYR:N	2.39	0.54
1:C:69:GLY:HA3	1:C:310:GLY:HA2	1.88	0.54
1:D:649:THR:HG22	1:D:703:LEU:HB2	1.87	0.54
1:A:236:GLN:NE2	1:A:365:THR:O	2.41	0.54
1:B:161:THR:OG1	1:B:187:LYS:NZ	2.41	0.54
1:B:236:GLN:NE2	1:B:365:THR:O	2.41	0.54
1:C:1099:CYS:HA	1:C:1110:CYS:HA	1.89	0.54
1:B:659:PHE:HB3	1:B:671:TRP:HB2	1.89	0.53
1:D:787:LEU:HD11	1:D:791:ASN:HD21	1.73	0.53
1:D:161:THR:OG1	1:D:187:LYS:NZ	2.41	0.53
1:A:1037:GLN:NE2	1:A:1198:ASP:O	2.40	0.53
1:B:787:LEU:HD11	1:B:791:ASN:HD21	1.73	0.53
1:C:236:GLN:NE2	1:C:365:THR:O	2.41	0.53
1:A:1099:CYS:HA	1:A:1110:CYS:HA	1.89	0.53
1:B:628:ARG:HH22	1:C:628:ARG:HD2	1.73	0.53
1:D:236:GLN:NE2	1:D:365:THR:O	2.41	0.53
1:C:1032:TRP:N	1:C:1093:THR:O	2.38	0.52
1:B:466:GLU:O	1:B:472:ALA:N	2.41	0.52
1:A:493:LYS:HD3	1:D:493:LYS:HD3	1.90	0.52
1:C:231:ASP:HB3	1:C:234:LYS:HE3	1.92	0.52
1:D:225:LEU:HD22	1:D:247:ILE:HB	1.92	0.52
1:D:231:ASP:HB3	1:D:234:LYS:HE3	1.92	0.52
1:A:231:ASP:HB3	1:A:234:LYS:HE3	1.92	0.52
1:B:225:LEU:HD22	1:B:247:ILE:HB	1.92	0.52
1:B:231:ASP:HB3	1:B:234:LYS:HE3	1.92	0.52
1:A:1018:LEU:HD23	1:A:1021:LEU:HD12	1.92	0.51
1:C:453:ARG:HE	1:C:458:LYS:HB3	1.76	0.51
1:A:809:VAL:HB	1:D:597:SER:HB3	1.93	0.51
1:B:453:ARG:HE	1:B:458:LYS:HB3	1.75	0.51
1:A:13:GLN:HB3	1:A:70:VAL:HG12	1.93	0.51
1:A:637:GLU:OE1	1:D:776:LYS:NZ	2.38	0.51
1:B:13:GLN:HB3	1:B:70:VAL:HG12	1.93	0.51
1:A:161:THR:OG1	1:A:187:LYS:NZ	2.41	0.51
1:A:453:ARG:HE	1:A:458:LYS:HB3	1.76	0.51

*Continued on next page...*

*Continued from previous page...*

Atom-1	Atom-2	Interatomic distance (Å)	Clash overlap (Å)
1:B:481:ILE:HD11	1:B:733:GLY:HA3	1.93	0.51
1:C:225:LEU:HD22	1:C:247:ILE:HB	1.92	0.51
1:A:481:ILE:HD11	1:A:733:GLY:HA3	1.93	0.51
1:A:784:THR:HB	1:D:628:ARG:HH11	1.75	0.51
1:B:25:GLU:HG2	1:B:76:PHE:HZ	1.76	0.51
1:C:25:GLU:HG2	1:C:76:PHE:HZ	1.76	0.51
1:C:13:GLN:HB3	1:C:70:VAL:HG12	1.93	0.51
1:A:225:LEU:HD22	1:A:247:ILE:HB	1.92	0.51
1:C:1018:LEU:HD23	1:C:1021:LEU:HD12	1.92	0.51
1:C:290:GLN:NE2	1:C:339:GLU:O	2.45	0.50
1:B:611:ILE:HG21	1:C:517:PHE:HE1	1.75	0.50
1:D:290:GLN:NE2	1:D:339:GLU:O	2.45	0.50
1:A:25:GLU:HG2	1:A:76:PHE:HZ	1.76	0.50
1:A:153:ALA:HA	1:A:158:TRP:HB2	1.93	0.50
1:B:407:MET:N	1:B:422:GLU:O	2.39	0.50
1:D:453:ARG:HE	1:D:458:LYS:HB3	1.75	0.50
1:A:290:GLN:NE2	1:A:339:GLU:O	2.45	0.50
1:A:348:ASP:OD1	1:A:352:LYS:N	2.45	0.50
1:D:25:GLU:HG2	1:D:76:PHE:HZ	1.76	0.50
1:D:407:MET:N	1:D:422:GLU:O	2.39	0.50
1:C:466:GLU:O	1:C:472:ALA:N	2.41	0.50
1:C:481:ILE:HD11	1:C:733:GLY:HA3	1.93	0.50
1:A:535:GLY:HA2	1:A:1221:MET:HE2	1.93	0.50
1:D:466:GLU:O	1:D:472:ALA:N	2.41	0.50
1:D:13:GLN:HB3	1:D:70:VAL:HG12	1.93	0.50
1:C:153:ALA:HA	1:C:158:TRP:HB2	1.93	0.49
1:D:481:ILE:HD11	1:D:733:GLY:HA3	1.93	0.49
1:D:153:ALA:HA	1:D:158:TRP:HB2	1.93	0.49
1:A:407:MET:N	1:A:422:GLU:O	2.39	0.49
1:A:789:LEU:O	1:A:793:ALA:N	2.44	0.49
1:C:348:ASP:OD1	1:C:352:LYS:N	2.45	0.49
1:A:306:ILE:HA	1:A:325:GLN:HG2	1.95	0.49
1:B:290:GLN:NE2	1:B:339:GLU:O	2.45	0.49
1:A:1192:VAL:HA	1:A:1196:PRO:HD3	1.95	0.49
1:C:1123:GLY:HA2	1:C:1126:TRP:HD1	1.78	0.49
1:B:306:ILE:HA	1:B:325:GLN:HG2	1.95	0.49
1:B:348:ASP:OD1	1:B:352:LYS:N	2.45	0.49
1:A:1123:GLY:HA2	1:A:1126:TRP:HD1	1.78	0.49
1:C:306:ILE:HA	1:C:325:GLN:HG2	1.95	0.49
1:A:466:GLU:O	1:A:472:ALA:N	2.41	0.49
1:C:1135:TYR:O	1:C:1173:SER:OG	2.31	0.49

*Continued on next page...*

*Continued from previous page...*

Atom-1	Atom-2	Interatomic distance (Å)	Clash overlap (Å)
1:C:1192:VAL:HA	1:C:1196:PRO:HD3	1.95	0.49
1:B:153:ALA:HA	1:B:158:TRP:HB2	1.94	0.48
1:D:348:ASP:OD1	1:D:352:LYS:N	2.45	0.48
1:A:141:ARG:NH2	1:A:195:ASP:OD1	2.42	0.48
1:A:1032:TRP:N	1:A:1093:THR:O	2.38	0.48
1:A:489:ILE:HD12	1:A:735:ALA:HB1	1.96	0.48
1:B:489:ILE:HD12	1:B:735:ALA:HB1	1.96	0.48
1:D:306:ILE:HA	1:D:325:GLN:HG2	1.95	0.48
1:B:250:TYR:OH	1:B:278:ILE:O	2.32	0.48
1:A:326:GLY:HA2	1:A:329:ILE:HD12	1.96	0.47
1:D:411:ASN:HB2	1:D:414:MET:HB2	1.96	0.47
1:B:326:GLY:HA2	1:B:329:ILE:HD12	1.96	0.47
1:A:1209:SER:O	1:A:1213:ALA:N	2.42	0.47
1:C:161:THR:OG1	1:C:187:LYS:NZ	2.41	0.47
1:C:299:LEU:HD21	1:C:329:ILE:HG12	1.97	0.47
1:C:543:VAL:HG22	1:C:596:LEU:HD21	1.97	0.47
1:B:411:ASN:HB2	1:B:414:MET:HB2	1.96	0.47
1:C:407:MET:N	1:C:422:GLU:O	2.39	0.47
1:B:141:ARG:NH2	1:B:195:ASP:OD1	2.42	0.47
1:B:347:PHE:HE1	1:B:353:ARG:HG2	1.79	0.47
1:C:672:THR:HG23	1:C:675:ARG:HH11	1.79	0.47
1:C:1022:PHE:HB2	1:C:1216:SER:HB3	1.96	0.47
1:C:1209:SER:O	1:C:1213:ALA:N	2.43	0.47
1:D:250:TYR:OH	1:D:278:ILE:O	2.32	0.47
1:D:347:PHE:HE1	1:D:353:ARG:HG2	1.79	0.47
1:A:250:TYR:OH	1:A:278:ILE:O	2.32	0.47
1:A:347:PHE:HE1	1:A:353:ARG:HG2	1.79	0.47
1:C:347:PHE:HE1	1:C:353:ARG:HG2	1.79	0.47
1:C:489:ILE:HD12	1:C:735:ALA:HB1	1.96	0.47
1:D:326:GLY:HA2	1:D:329:ILE:HD12	1.96	0.47
1:D:489:ILE:HD12	1:D:735:ALA:HB1	1.96	0.47
1:D:672:THR:HG23	1:D:675:ARG:HH11	1.79	0.47
1:A:765:LYS:HA	1:A:769:ASP:HB2	1.97	0.47
1:B:543:VAL:HG22	1:B:596:LEU:HD21	1.97	0.47
1:B:672:THR:HG23	1:B:675:ARG:HH11	1.80	0.47
1:C:427:ASP:OD2	1:C:766:TRP:NE1	2.44	0.47
1:C:716:LYS:HG3	1:C:772:GLU:HB3	1.97	0.47
1:A:334:LYS:HA	1:A:347:PHE:HD2	1.81	0.46
1:A:672:THR:HG23	1:A:675:ARG:HH11	1.79	0.46
1:C:765:LYS:HA	1:C:769:ASP:HB2	1.97	0.46
1:A:299:LEU:HD21	1:A:329:ILE:HG12	1.97	0.46

*Continued on next page...*



*Continued from previous page...*

Atom-1	Atom-2	Interatomic distance (Å)	Clash overlap (Å)
1:B:521:LEU:O	1:B:526:TRP:NE1	2.49	0.46
1:B:661:ARG:HH22	1:C:755:GLU:HB3	1.81	0.46
1:C:326:GLY:HA2	1:C:329:ILE:HD12	1.96	0.46
1:D:523:TYR:HA	1:D:526:TRP:HD1	1.81	0.46
1:A:716:LYS:HG3	1:A:772:GLU:HB3	1.97	0.46
1:D:299:LEU:HD21	1:D:329:ILE:HG12	1.97	0.46
1:D:765:LYS:HA	1:D:769:ASP:HB2	1.97	0.46
1:B:401:LEU:HD23	1:B:406:VAL:HG12	1.98	0.46
1:B:765:LYS:HA	1:B:769:ASP:HB2	1.97	0.46
1:C:141:ARG:NH2	1:C:195:ASP:OD1	2.42	0.46
1:C:250:TYR:OH	1:C:278:ILE:O	2.32	0.46
1:C:334:LYS:HA	1:C:347:PHE:HD2	1.81	0.46
1:C:411:ASN:HB2	1:C:414:MET:HB2	1.96	0.46
1:C:1035:GLY:HA2	1:C:1201:PRO:HB3	1.97	0.46
1:D:401:LEU:HD23	1:D:406:VAL:HG12	1.98	0.46
1:D:716:LYS:HG3	1:D:772:GLU:HB3	1.97	0.46
1:B:334:LYS:HA	1:B:347:PHE:HD2	1.81	0.46
1:A:543:VAL:HG22	1:A:596:LEU:HD21	1.97	0.46
1:A:1008:ARG:HH22	1:A:1229:ASN:HD22	1.64	0.46
1:A:1035:GLY:HA2	1:A:1201:PRO:HB3	1.97	0.46
1:A:1149:GLU:O	1:A:1153:SER:N	2.46	0.46
1:C:523:TYR:HA	1:C:526:TRP:HD1	1.81	0.46
1:C:611:ILE:HG21	1:D:517:PHE:HE1	1.81	0.46
1:C:1038:ARG:HA	1:C:1088:LEU:HA	1.98	0.46
1:A:523:TYR:HA	1:A:526:TRP:HD1	1.81	0.46
1:A:411:ASN:HB2	1:A:414:MET:HB2	1.96	0.46
1:A:1022:PHE:HB2	1:A:1216:SER:HB3	1.96	0.46
1:C:521:LEU:O	1:C:526:TRP:NE1	2.49	0.46
1:D:208:VAL:HG13	1:D:213:LYS:HB2	1.98	0.46
1:A:1038:ARG:HA	1:A:1088:LEU:HA	1.98	0.45
1:D:197:GLU:O	1:D:201:VAL:N	2.41	0.45
1:A:401:LEU:HD23	1:A:406:VAL:HG12	1.98	0.45
1:A:1040:PRO:O	1:A:1086:PHE:N	2.49	0.45
1:B:467:LEU:HD22	1:B:737:PRO:HD3	1.99	0.45
1:C:208:VAL:HG13	1:C:213:LYS:HB2	1.98	0.45
1:D:235:ILE:HD13	1:D:242:VAL:HG21	1.99	0.45
1:D:647:TYR:HB3	1:D:701:ALA:HB3	1.99	0.45
1:B:77:TYR:OH	1:B:101:PHE:O	2.22	0.45
1:B:523:TYR:HA	1:B:526:TRP:HD1	1.81	0.45
1:B:716:LYS:HG3	1:B:772:GLU:HB3	1.97	0.45
1:D:467:LEU:HD22	1:D:737:PRO:HD3	1.99	0.45

*Continued on next page...*

*Continued from previous page...*

Atom-1	Atom-2	Interatomic distance (Å)	Clash overlap (Å)
1:A:38:THR:HG23	1:A:41:PHE:H	1.82	0.45
1:C:401:LEU:HD23	1:C:406:VAL:HG12	1.98	0.45
1:C:633:ILE:HG23	1:C:638:ASP:HB2	1.99	0.45
1:C:1008:ARG:HH22	1:C:1229:ASN:HD22	1.64	0.45
1:D:334:LYS:HA	1:D:347:PHE:HD2	1.80	0.45
1:B:299:LEU:HD21	1:B:329:ILE:HG12	1.97	0.45
1:D:543:VAL:HG22	1:D:596:LEU:HD21	1.97	0.45
1:B:235:ILE:HD13	1:B:242:VAL:HG21	1.99	0.45
1:C:1040:PRO:O	1:C:1086:PHE:N	2.49	0.45
1:D:232:LEU:HD23	1:D:363:LEU:HD13	1.99	0.45
1:D:521:LEU:O	1:D:526:TRP:NE1	2.49	0.45
1:A:208:VAL:HG13	1:A:213:LYS:HB2	1.98	0.45
1:A:521:LEU:O	1:A:526:TRP:NE1	2.49	0.45
1:A:235:ILE:HD13	1:A:242:VAL:HG21	1.99	0.45
1:B:38:THR:HG23	1:B:41:PHE:H	1.82	0.45
1:B:232:LEU:HD23	1:B:363:LEU:HD13	1.99	0.45
1:C:38:THR:HG23	1:C:41:PHE:H	1.82	0.45
1:A:647:TYR:HB3	1:A:701:ALA:HB3	1.99	0.45
1:B:52:VAL:HG13	1:B:78:ASP:HB2	1.99	0.45
1:C:221:ILE:HG12	1:C:243:SER:HB2	1.99	0.45
1:C:647:TYR:HB3	1:C:701:ALA:HB3	1.99	0.45
1:A:147:GLN:HE21	1:B:143:LEU:HD21	1.82	0.44
1:A:467:LEU:HD22	1:A:737:PRO:HD3	1.99	0.44
1:C:1115:ASP:HA	1:C:1125:LEU:HD13	1.99	0.44
1:C:52:VAL:HG13	1:C:78:ASP:HB2	1.99	0.44
1:D:221:ILE:HG12	1:D:243:SER:HB2	1.99	0.44
1:A:221:ILE:HG12	1:A:243:SER:HB2	1.99	0.44
1:A:1035:GLY:N	1:A:1091:PHE:O	2.44	0.44
1:A:764:ASN:HA	1:A:768:TYR:HD2	1.82	0.44
1:A:1115:ASP:HA	1:A:1125:LEU:HD13	2.00	0.44
1:B:208:VAL:HG13	1:B:213:LYS:HB2	1.98	0.44
1:C:467:LEU:HD22	1:C:737:PRO:HD3	1.99	0.44
1:C:27:SER:OG	1:C:271:PRO:O	2.32	0.44
1:C:232:LEU:HD23	1:C:363:LEU:HD13	1.99	0.44
1:C:764:ASN:HA	1:C:768:TYR:HD2	1.82	0.44
1:D:38:THR:HG23	1:D:41:PHE:H	1.82	0.44
1:D:764:ASN:HA	1:D:768:TYR:HD2	1.82	0.44
1:B:221:ILE:HG12	1:B:243:SER:HB2	1.99	0.44
1:C:235:ILE:HD13	1:C:242:VAL:HG21	1.99	0.44
1:A:232:LEU:HD23	1:A:363:LEU:HD13	1.99	0.44
1:C:77:TYR:OH	1:C:101:PHE:O	2.22	0.44

*Continued on next page...*

*Continued from previous page...*

Atom-1	Atom-2	Interatomic distance (Å)	Clash overlap (Å)
1:D:358:ILE:HB	1:D:374:TRP:HB3	2.00	0.44
1:B:358:ILE:HB	1:B:374:TRP:HB3	2.00	0.44
1:C:1035:GLY:N	1:C:1091:PHE:O	2.44	0.44
1:A:23:ASP:HB3	1:A:271:PRO:HG2	2.00	0.44
1:B:603:GLY:HA3	1:C:581:LEU:HD21	2.00	0.44
1:B:764:ASN:HA	1:B:768:TYR:HD2	1.82	0.44
1:D:52:VAL:HG13	1:D:78:ASP:HB2	1.99	0.44
1:A:143:LEU:HD21	1:B:147:GLN:HE21	1.82	0.43
1:A:586:GLN:HE22	1:B:586:GLN:HG3	1.83	0.43
1:B:23:ASP:HB3	1:B:271:PRO:HG2	2.00	0.43
1:B:647:TYR:HB3	1:B:701:ALA:HB3	1.99	0.43
1:C:23:ASP:HB3	1:C:271:PRO:HG2	2.00	0.43
1:D:141:ARG:NH2	1:D:195:ASP:OD1	2.42	0.43
1:D:298:ASN:O	1:D:302:GLN:N	2.43	0.43
1:B:716:LYS:N	1:B:772:GLU:OE1	2.50	0.43
1:D:23:ASP:HB3	1:D:271:PRO:HG2	2.00	0.43
1:A:109:PHE:HZ	1:A:327:VAL:HG22	1.84	0.43
1:A:668:ASP:O	1:A:672:THR:N	2.46	0.43
1:B:158:TRP:HB3	1:B:160:VAL:HG23	2.00	0.43
1:C:1149:GLU:O	1:C:1153:SER:N	2.46	0.43
1:A:802:GLY:O	1:A:806:ALA:N	2.50	0.43
1:A:1135:TYR:O	1:A:1173:SER:OG	2.31	0.43
1:B:628:ARG:HH22	1:C:628:ARG:HB3	1.84	0.43
1:D:296:PHE:HA	1:D:299:LEU:HB2	2.01	0.43
1:A:52:VAL:HG13	1:A:78:ASP:HB2	1.99	0.43
1:A:158:TRP:HB3	1:A:160:VAL:HG23	2.00	0.43
1:B:197:GLU:O	1:B:201:VAL:N	2.41	0.43
1:D:109:PHE:HZ	1:D:327:VAL:HG22	1.84	0.43
1:D:158:TRP:HB3	1:D:160:VAL:HG23	2.00	0.43
1:A:358:ILE:HB	1:A:374:TRP:HB3	2.00	0.43
1:C:716:LYS:N	1:C:772:GLU:OE1	2.50	0.43
1:D:802:GLY:O	1:D:806:ALA:N	2.50	0.43
1:A:55:SER:OG	1:A:80:LYS:O	2.37	0.43
1:A:646:ALA:N	1:A:699:LYS:O	2.50	0.43
1:B:296:PHE:HA	1:B:299:LEU:HB2	2.01	0.43
1:C:296:PHE:HA	1:C:299:LEU:HB2	2.01	0.43
1:D:716:LYS:N	1:D:772:GLU:OE1	2.50	0.43
1:C:109:PHE:HZ	1:C:327:VAL:HG22	1.84	0.43
1:C:399:THR:OG1	1:C:400:ILE:N	2.52	0.43
1:C:802:GLY:O	1:C:806:ALA:N	2.50	0.43
1:D:55:SER:OG	1:D:80:LYS:O	2.37	0.43

*Continued on next page...*

*Continued from previous page...*

Atom-1	Atom-2	Interatomic distance (Å)	Clash overlap (Å)
1:D:236:GLN:HA	1:D:363:LEU:HD21	2.01	0.43
1:C:55:SER:OG	1:C:80:LYS:O	2.37	0.42
1:C:358:ILE:HB	1:C:374:TRP:HB3	2.00	0.42
1:A:236:GLN:HA	1:A:363:LEU:HD21	2.01	0.42
1:C:612:ILE:O	1:C:616:TYR:N	2.45	0.42
1:A:427:ASP:OD2	1:A:766:TRP:NE1	2.44	0.42
1:D:453:ARG:HB2	1:D:460:TRP:CE2	2.54	0.42
1:A:27:SER:OG	1:A:271:PRO:O	2.32	0.42
1:A:296:PHE:HA	1:A:299:LEU:HB2	2.01	0.42
1:A:453:ARG:HB2	1:A:460:TRP:CE2	2.54	0.42
1:C:158:TRP:HB3	1:C:160:VAL:HG23	2.00	0.42
1:A:24:GLN:HE21	1:A:262:TRP:HZ2	1.68	0.42
1:A:399:THR:OG1	1:A:400:ILE:N	2.52	0.42
1:B:24:GLN:HE21	1:B:262:TRP:HZ2	1.68	0.42
1:C:114:ARG:HD3	1:C:280:TYR:HE2	1.84	0.42
1:D:668:ASP:O	1:D:672:THR:N	2.46	0.42
1:A:408:MET:HE3	1:A:412:HIS:HB2	2.02	0.42
1:B:236:GLN:HA	1:B:363:LEU:HD21	2.01	0.42
1:B:408:MET:HE3	1:B:412:HIS:HB2	2.02	0.42
1:C:711:TYR:CZ	1:C:715:ARG:HD3	2.55	0.42
1:A:587:GLN:OE1	1:D:588:GLY:HA2	2.20	0.42
1:B:109:PHE:HZ	1:B:327:VAL:HG22	1.84	0.42
1:B:453:ARG:HB2	1:B:460:TRP:CE2	2.54	0.42
1:D:77:TYR:OH	1:D:101:PHE:O	2.22	0.42
1:B:55:SER:OG	1:B:80:LYS:O	2.37	0.42
1:B:114:ARG:HD3	1:B:280:TYR:HE2	1.84	0.42
1:C:453:ARG:HB2	1:C:460:TRP:CE2	2.54	0.42
1:D:24:GLN:HE21	1:D:262:TRP:HZ2	1.68	0.42
1:D:359:ASN:HB3	1:D:370:LYS:HE2	2.02	0.42
1:A:540:LEU:HD11	1:A:580:SER:HB3	2.02	0.42
1:A:1095:ILE:O	1:A:1184:TYR:OH	2.37	0.42
1:B:427:ASP:OD2	1:B:766:TRP:NE1	2.44	0.42
1:C:178:ARG:HH21	1:C:210:THR:HG21	1.85	0.42
1:C:236:GLN:HA	1:C:363:LEU:HD21	2.01	0.42
1:A:114:ARG:HD3	1:A:280:TYR:HE2	1.84	0.41
1:A:1172:LEU:HD11	1:B:807:MET:HE2	2.01	0.41
1:B:11:SER:HA	1:B:42:ARG:HB2	2.02	0.41
1:C:540:LEU:HD11	1:C:580:SER:HB3	2.02	0.41
1:A:711:TYR:CZ	1:A:715:ARG:HD3	2.55	0.41
1:B:78:ASP:N	1:B:81:SER:OG	2.54	0.41
1:B:399:THR:OG1	1:B:400:ILE:N	2.52	0.41

*Continued on next page...*

*Continued from previous page...*

Atom-1	Atom-2	Interatomic distance (Å)	Clash overlap (Å)
1:B:628:ARG:HH12	1:C:628:ARG:HD2	1.84	0.41
1:C:359:ASN:HB3	1:C:370:LYS:HE2	2.02	0.41
1:D:16:GLY:HA3	1:D:47:ILE:HA	2.03	0.41
1:D:114:ARG:HD3	1:D:280:TYR:HE2	1.84	0.41
1:A:178:ARG:HH21	1:A:210:THR:HG21	1.85	0.41
1:B:628:ARG:HH12	1:C:628:ARG:HH11	1.69	0.41
1:D:115:PRO:HG3	1:D:353:ARG:HD3	2.03	0.41
1:A:115:PRO:HG3	1:A:353:ARG:HD3	2.03	0.41
1:A:1172:LEU:HD21	1:B:807:MET:HG3	2.02	0.41
1:B:284:LEU:HA	1:B:287:ASP:HB2	2.03	0.41
1:B:659:PHE:HD1	1:B:667:PHE:HB3	1.86	0.41
1:C:11:SER:HA	1:C:42:ARG:HB2	2.02	0.41
1:D:178:ARG:HH21	1:D:210:THR:HG21	1.85	0.41
1:B:16:GLY:HA3	1:B:47:ILE:HA	2.03	0.41
1:C:646:ALA:N	1:C:699:LYS:O	2.50	0.41
1:A:493:LYS:HA	1:A:494:PRO:HD3	1.95	0.41
1:B:404:PRO:O	1:B:424:TYR:N	2.46	0.41
1:D:27:SER:OG	1:D:271:PRO:O	2.32	0.41
1:D:284:LEU:HA	1:D:287:ASP:HB2	2.03	0.41
1:D:711:TYR:CZ	1:D:715:ARG:HD3	2.55	0.41
1:A:11:SER:HA	1:A:42:ARG:HB2	2.02	0.41
1:B:711:TYR:CZ	1:B:715:ARG:HD3	2.55	0.41
1:B:802:GLY:O	1:B:806:ALA:N	2.50	0.41
1:D:659:PHE:HD1	1:D:667:PHE:HB3	1.86	0.41
1:B:372:GLY:HA2	1:B:383:THR:H	1.86	0.41
1:C:284:LEU:HA	1:C:287:ASP:HB2	2.03	0.41
1:D:372:GLY:HA2	1:D:383:THR:H	1.86	0.41
1:A:576:SER:HA	1:A:579:PHE:HD2	1.86	0.41
1:A:1175:LEU:HD22	1:B:803:LEU:HD13	2.03	0.41
1:B:586:GLN:HE22	1:C:586:GLN:HE21	1.69	0.41
1:C:16:GLY:HA3	1:C:47:ILE:HA	2.02	0.41
1:C:78:ASP:N	1:C:81:SER:OG	2.54	0.41
1:C:358:ILE:O	1:C:374:TRP:N	2.44	0.41
1:C:576:SER:HA	1:C:579:PHE:HD2	1.86	0.41
1:C:659:PHE:HD1	1:C:667:PHE:HB3	1.86	0.41
1:D:11:SER:HA	1:D:42:ARG:HB2	2.02	0.41
1:D:408:MET:HE3	1:D:412:HIS:HB2	2.02	0.41
1:D:540:LEU:HD11	1:D:580:SER:HB3	2.02	0.41
1:D:576:SER:HA	1:D:579:PHE:HD2	1.86	0.41
1:A:262:TRP:CZ2	1:A:273:ALA:HA	2.56	0.41
1:B:359:ASN:HB3	1:B:370:LYS:HE2	2.02	0.41

*Continued on next page...*

*Continued from previous page...*

Atom-1	Atom-2	Interatomic distance (Å)	Clash overlap (Å)
1:B:576:SER:HA	1:B:579:PHE:HD2	1.86	0.41
1:C:298:ASN:O	1:C:302:GLN:N	2.43	0.41
1:C:404:PRO:O	1:C:424:TYR:N	2.46	0.41
1:A:78:ASP:N	1:A:81:SER:OG	2.54	0.40
1:A:372:GLY:HA2	1:A:383:THR:H	1.86	0.40
1:C:24:GLN:HE21	1:C:262:TRP:HZ2	1.68	0.40
1:A:16:GLY:HA3	1:A:47:ILE:HA	2.02	0.40
1:A:359:ASN:HB3	1:A:370:LYS:HE2	2.02	0.40
1:A:1189:GLN:HE22	1:B:789:LEU:H	1.69	0.40
1:B:138:ASP:N	1:B:195:ASP:O	2.49	0.40
1:B:540:LEU:HD11	1:B:580:SER:HB3	2.02	0.40
1:C:115:PRO:HG3	1:C:353:ARG:HD3	2.03	0.40
1:D:262:TRP:CZ2	1:D:273:ALA:HA	2.56	0.40
1:A:418:ASN:HD21	1:A:441:LYS:HA	1.87	0.40
1:C:408:MET:HE3	1:C:412:HIS:HB2	2.02	0.40
1:D:358:ILE:O	1:D:374:TRP:N	2.44	0.40
1:D:520:PRO:O	1:D:619:ASN:ND2	2.54	0.40
1:B:262:TRP:CZ2	1:B:273:ALA:HA	2.56	0.40
1:B:646:ALA:N	1:B:699:LYS:O	2.50	0.40
1:C:138:ASP:N	1:C:195:ASP:O	2.49	0.40
1:C:707:THR:O	1:C:767:TRP:NE1	2.50	0.40
1:C:711:TYR:O	1:C:715:ARG:HG2	2.22	0.40
1:A:197:GLU:O	1:A:201:VAL:N	2.41	0.40
1:B:247:ILE:HG23	1:B:248:VAL:HG23	2.04	0.40
1:C:247:ILE:HG23	1:C:248:VAL:HG23	2.04	0.40
1:C:1093:THR:HA	1:C:1098:SER:HA	2.04	0.40
1:D:466:GLU:HA	1:D:471:LYS:HB2	2.04	0.40

There are no symmetry-related clashes.

## 5.3 Torsion angles [i](#)

### 5.3.1 Protein backbone [i](#)

In the following table, the Percentiles column shows the percent Ramachandran outliers of the chain as a percentile score with respect to all PDB entries followed by that with respect to all EM entries.

The Analysed column shows the number of residues for which the backbone conformation was analysed, and the total number of residues.

Mol	Chain	Analysed	Favoured	Allowed	Outliers	Percentiles	
1	A	950/1057 (90%)	888 (94%)	60 (6%)	2 (0%)	44	78
1	B	776/1057 (73%)	728 (94%)	48 (6%)	0	100	100
1	C	950/1057 (90%)	886 (93%)	62 (6%)	2 (0%)	44	78
1	D	776/1057 (73%)	729 (94%)	47 (6%)	0	100	100
All	All	3452/4228 (82%)	3231 (94%)	217 (6%)	4 (0%)	50	83

All (4) Ramachandran outliers are listed below:

Mol	Chain	Res	Type
1	A	1204	TRP
1	C	1204	TRP
1	A	1119	ALA
1	C	1119	ALA

### 5.3.2 Protein sidechains ⓘ

In the following table, the Percentiles column shows the percent sidechain outliers of the chain as a percentile score with respect to all PDB entries followed by that with respect to all EM entries.

The Analysed column shows the number of residues for which the sidechain conformation was analysed, and the total number of residues.

Mol	Chain	Analysed	Rotameric	Outliers	Percentiles	
1	A	816/888 (92%)	814 (100%)	2 (0%)	92	94
1	B	662/888 (74%)	660 (100%)	2 (0%)	91	92
1	C	816/888 (92%)	814 (100%)	2 (0%)	92	94
1	D	662/888 (74%)	660 (100%)	2 (0%)	91	92
All	All	2956/3552 (83%)	2948 (100%)	8 (0%)	90	92

All (8) residues with a non-rotameric sidechain are listed below:

Mol	Chain	Res	Type
1	A	235	ILE
1	A	596	LEU
1	B	235	ILE
1	B	596	LEU
1	C	235	ILE
1	C	596	LEU
1	D	235	ILE

*Continued on next page...*

*Continued from previous page...*

Mol	Chain	Res	Type
1	D	596	LEU

Sometimes sidechains can be flipped to improve hydrogen bonding and reduce clashes. All (34) such sidechains are listed below:

Mol	Chain	Res	Type
1	A	24	GLN
1	A	60	ASN
1	A	65	GLN
1	A	147	GLN
1	A	359	ASN
1	A	412	HIS
1	A	586	GLN
1	A	1189	GLN
1	A	1229	ASN
1	B	10	ASN
1	B	24	GLN
1	B	60	ASN
1	B	65	GLN
1	B	83	ASN
1	B	147	GLN
1	B	359	ASN
1	B	412	HIS
1	C	24	GLN
1	C	60	ASN
1	C	65	GLN
1	C	147	GLN
1	C	359	ASN
1	C	412	HIS
1	C	586	GLN
1	C	1186	GLN
1	C	1229	ASN
1	D	24	GLN
1	D	60	ASN
1	D	65	GLN
1	D	83	ASN
1	D	147	GLN
1	D	202	ASN
1	D	359	ASN
1	D	412	HIS



### 5.3.3 RNA [i](#)

There are no RNA molecules in this entry.

### 5.4 Non-standard residues in protein, DNA, RNA chains [i](#)

There are no non-standard protein/DNA/RNA residues in this entry.

### 5.5 Carbohydrates [i](#)

There are no oligosaccharides in this entry.

### 5.6 Ligand geometry [i](#)

There are no ligands in this entry.

### 5.7 Other polymers [i](#)

There are no such residues in this entry.

### 5.8 Polymer linkage issues [i](#)

The following chains have linkage breaks:

Mol	Chain	Number of breaks
1	A	1

All chain breaks are listed below:

Model	Chain	Residue-1	Atom-1	Residue-2	Atom-2	Distance (Å)
1	A	612:ILE	C	613:ILE	N	1.19

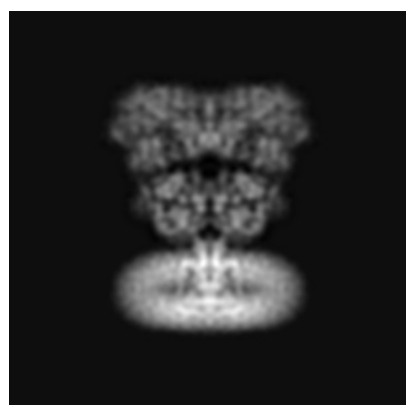
## 6 Map visualisation [i](#)

This section contains visualisations of the EMDB entry EMD-8821. These allow visual inspection of the internal detail of the map and identification of artifacts.

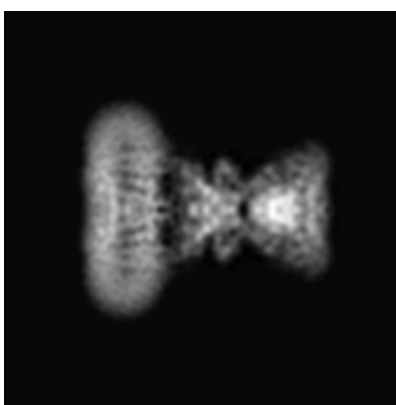
No raw map or half-maps were deposited for this entry and therefore no images, graphs, etc. pertaining to the raw map can be shown.

### 6.1 Orthogonal projections [i](#)

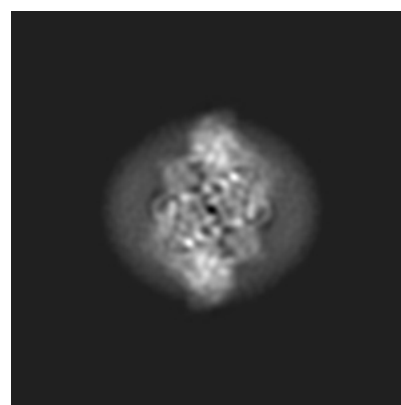
#### 6.1.1 Primary map



X



Y



Z

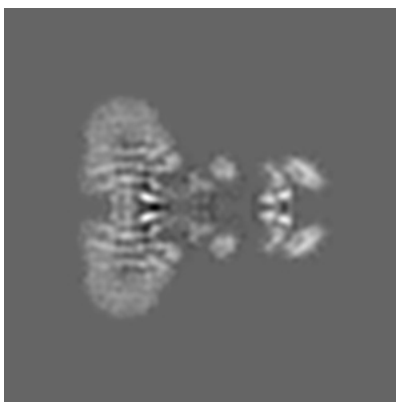
The images above show the map projected in three orthogonal directions.

### 6.2 Central slices [i](#)

#### 6.2.1 Primary map



X Index: 150



Y Index: 150



Z Index: 150

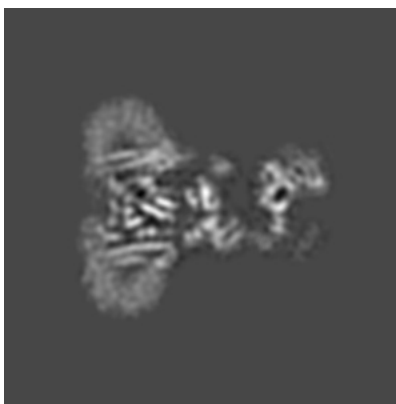
The images above show central slices of the map in three orthogonal directions.

## 6.3 Largest variance slices [i](#)

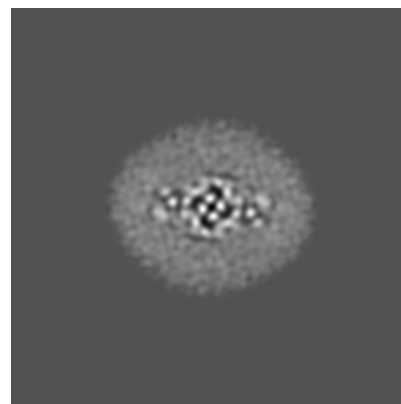
### 6.3.1 Primary map



X Index: 146



Y Index: 156

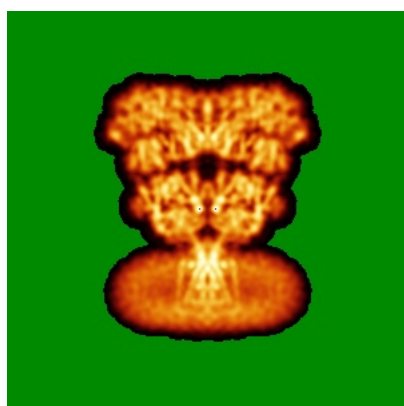


Z Index: 109

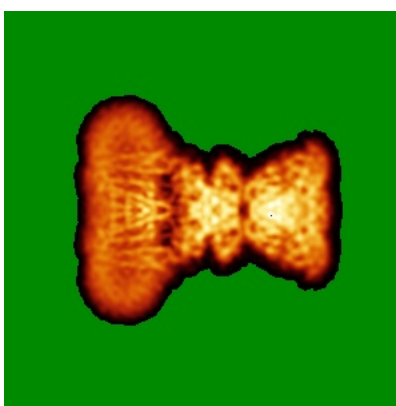
The images above show the largest variance slices of the map in three orthogonal directions.

## 6.4 Orthogonal standard-deviation projections (False-color) [i](#)

### 6.4.1 Primary map



X



Y

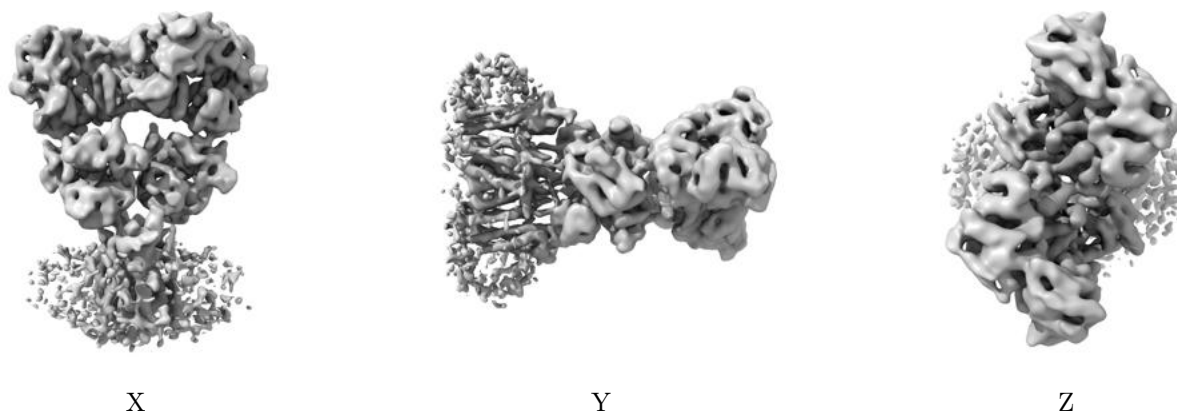


Z

The images above show the map standard deviation projections with false color in three orthogonal directions. Minimum values are shown in green, max in blue, and dark to light orange shades represent small to large values respectively.

## 6.5 Orthogonal surface views [i](#)

### 6.5.1 Primary map



The images above show the 3D surface view of the map at the recommended contour level 0.019. These images, in conjunction with the slice images, may facilitate assessment of whether an appropriate contour level has been provided.

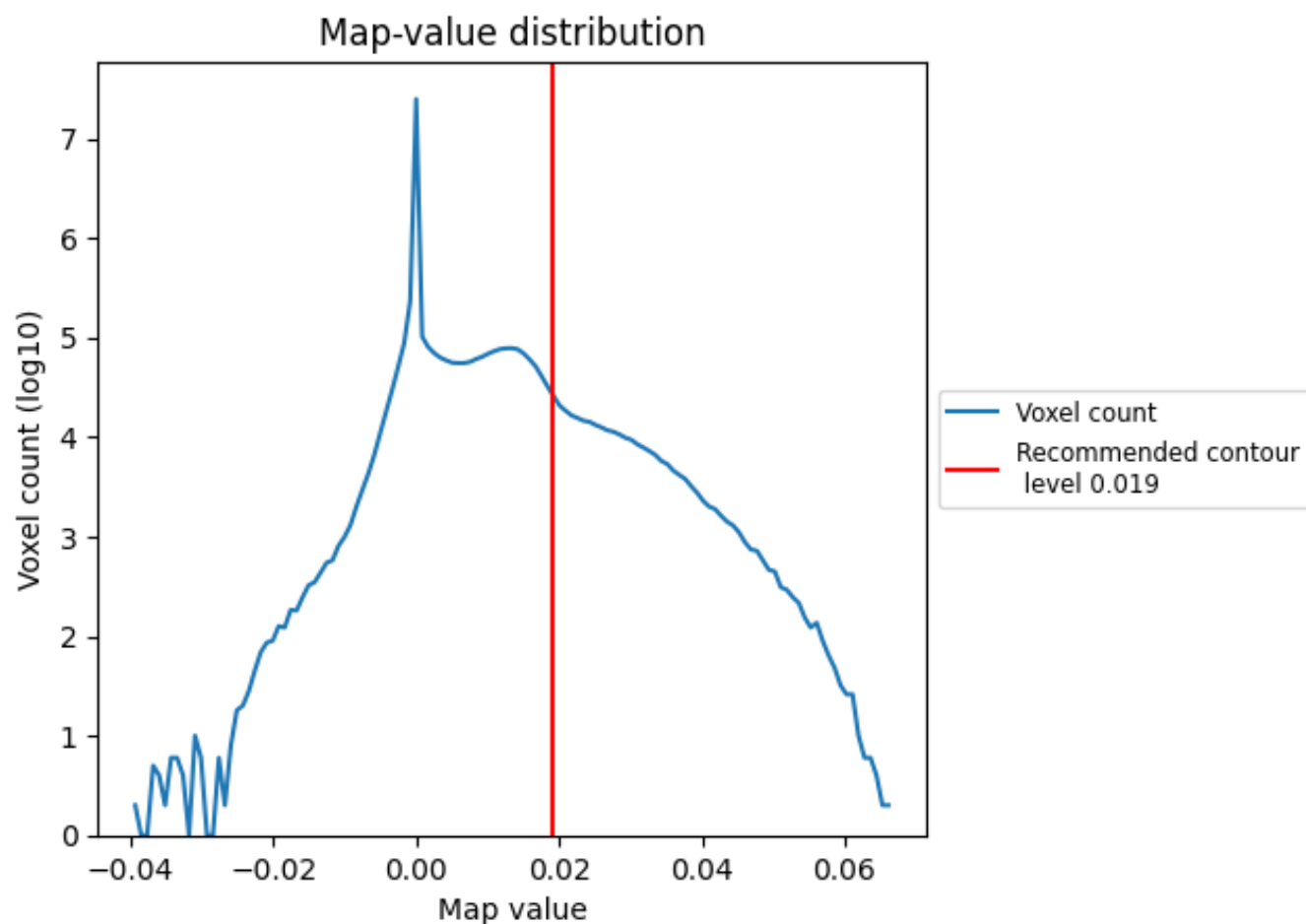
## 6.6 Mask visualisation [i](#)

This section was not generated. No masks/segmentation were deposited.

## 7 Map analysis [i](#)

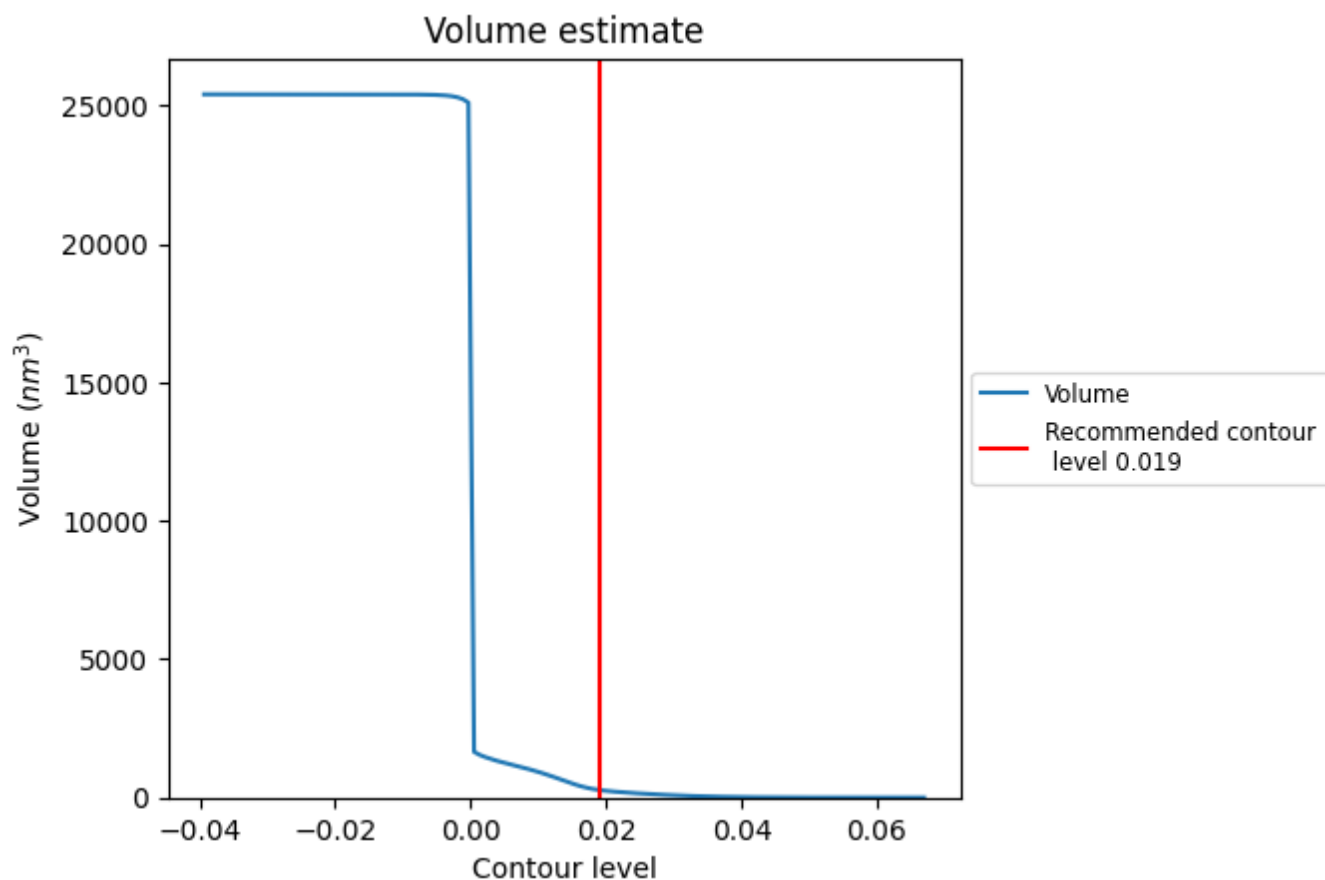
This section contains the results of statistical analysis of the map.

### 7.1 Map-value distribution [i](#)



The map-value distribution is plotted in 128 intervals along the x-axis. The y-axis is logarithmic. A spike in this graph at zero usually indicates that the volume has been masked.

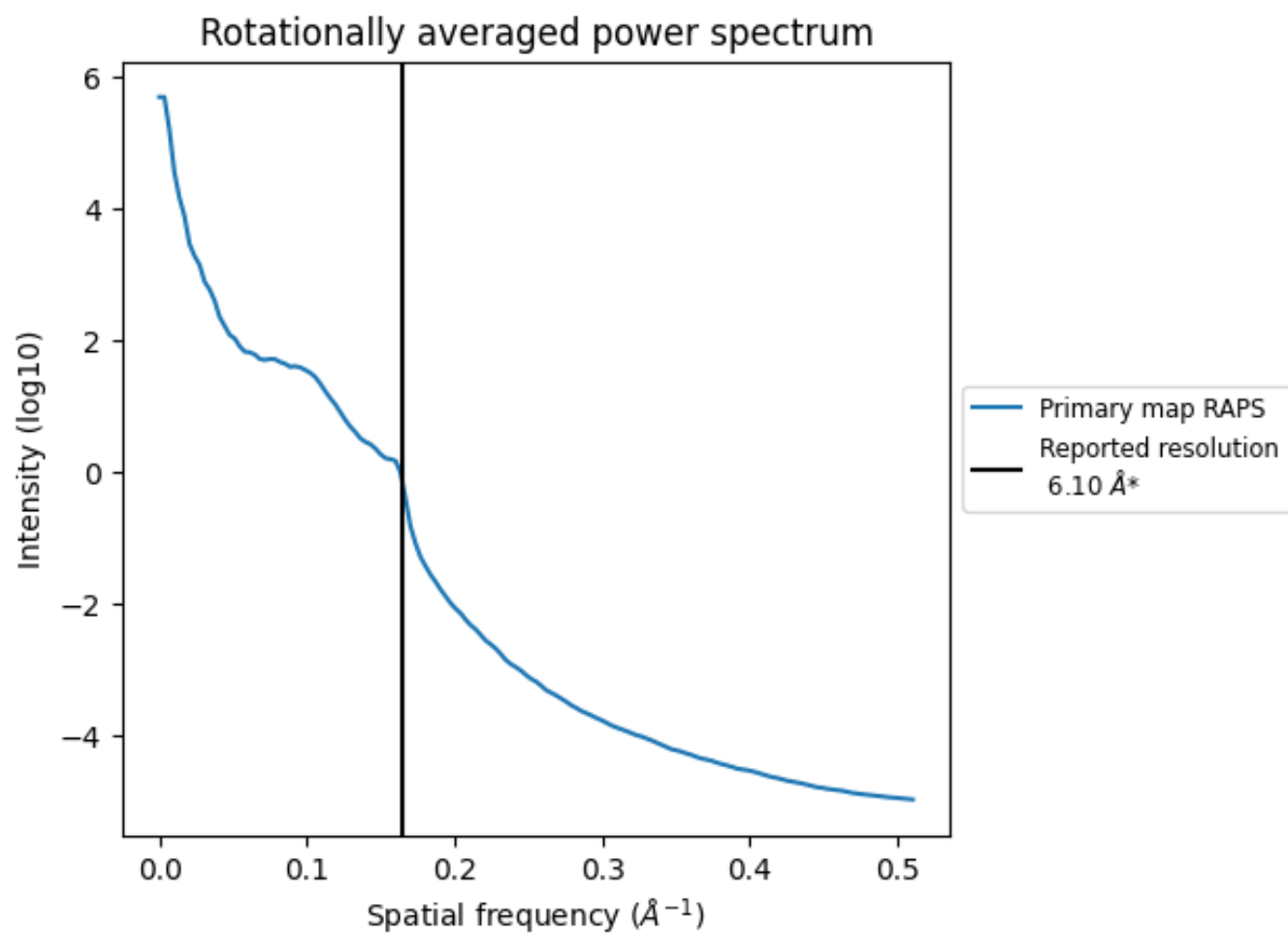
## 7.2 Volume estimate [i](#)



The volume at the recommended contour level is 273 nm<sup>3</sup>; this corresponds to an approximate mass of 247 kDa.

The volume estimate graph shows how the enclosed volume varies with the contour level. The recommended contour level is shown as a vertical line and the intersection between the line and the curve gives the volume of the enclosed surface at the given level.

### 7.3 Rotationally averaged power spectrum ⓘ



\*Reported resolution corresponds to spatial frequency of 0.164 Å<sup>-1</sup>

## 8 Fourier-Shell correlation ⓘ

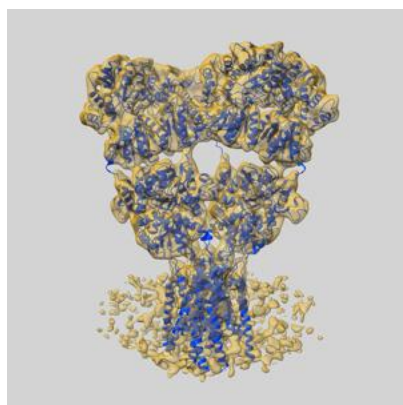
This section was not generated. No FSC curve or half-maps provided.



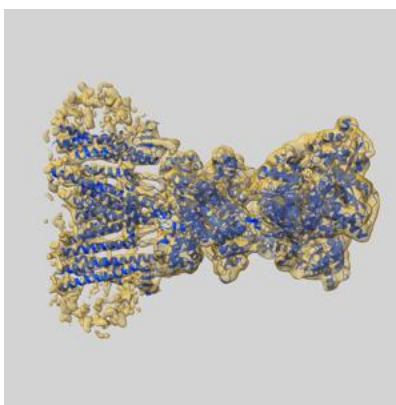
## 9 Map-model fit [i](#)

This section contains information regarding the fit between EMDB map EMD-8821 and PDB model 5WEM. Per-residue inclusion information can be found in section 3 on page 5.

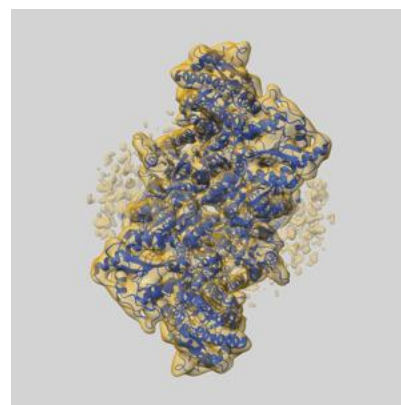
### 9.1 Map-model overlay [i](#)



X



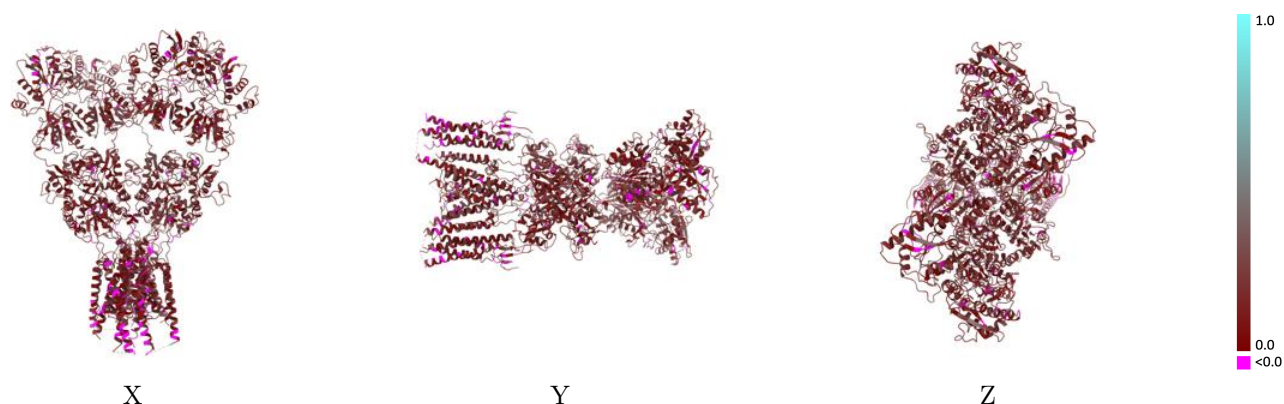
Y



Z

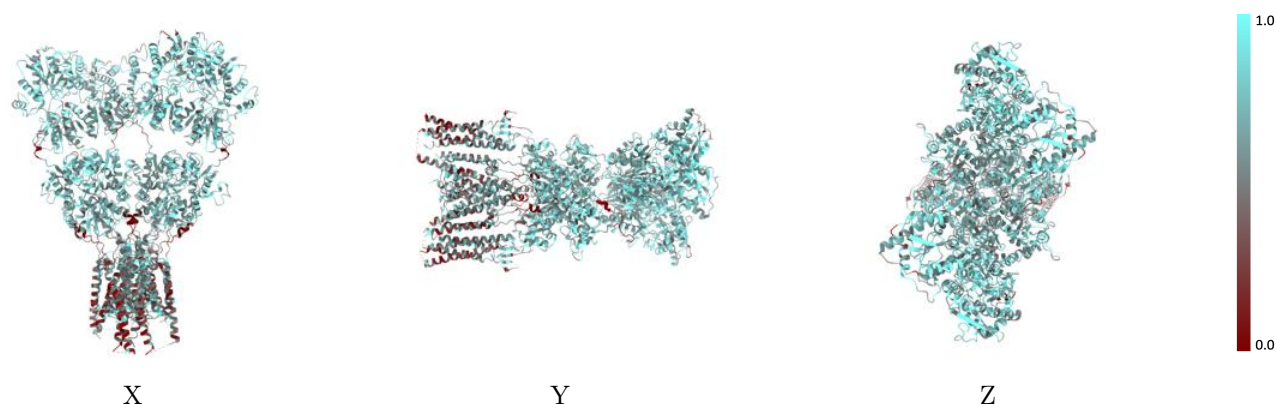
The images above show the 3D surface view of the map at the recommended contour level 0.019 at 50% transparency in yellow overlaid with a ribbon representation of the model coloured in blue. These images allow for the visual assessment of the quality of fit between the atomic model and the map.

## 9.2 Q-score mapped to coordinate model [i](#)



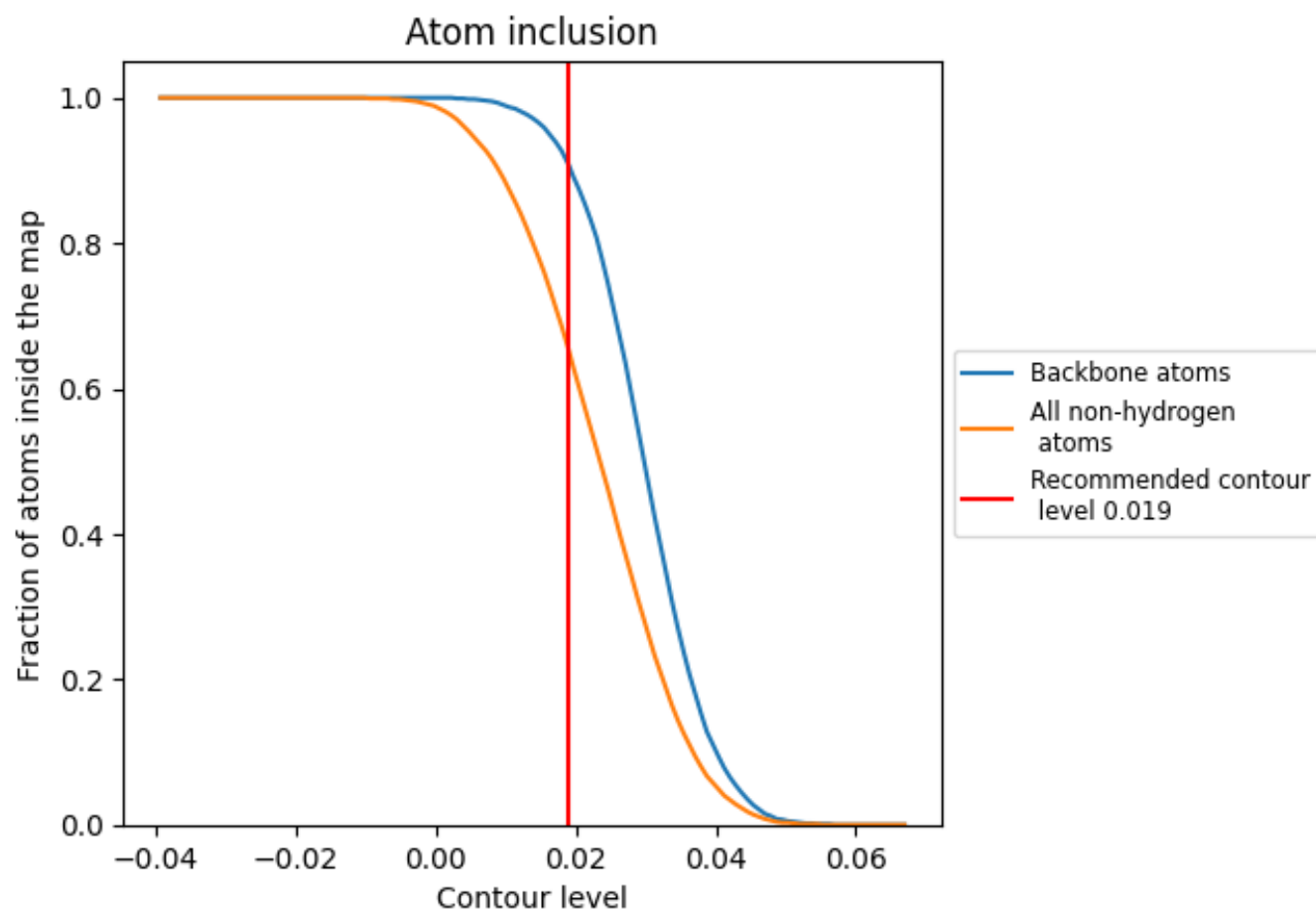
The images above show the model with each residue coloured according to its Q-score. This shows their resolvability in the map with higher Q-score values reflecting better resolvability. Please note: Q-score is calculating the resolvability of atoms, and thus high values are only expected at resolutions at which atoms can be resolved. Low Q-score values may therefore be expected for many entries.

## 9.3 Atom inclusion mapped to coordinate model [i](#)



The images above show the model with each residue coloured according to its atom inclusion. This shows to what extent they are inside the map at the recommended contour level (0.019).

## 9.4 Atom inclusion [i](#)



At the recommended contour level, 91% of all backbone atoms, 65% of all non-hydrogen atoms, are inside the map.

9.5 Map-model fit summary ⓘ

The table lists the average atom inclusion at the recommended contour level (0.019) and Q-score for the entire model and for each chain.

Chain	Atom inclusion	Q-score
All	<div></div> 0.6520	<div></div> 0.1690
A	<div></div> 0.6440	<div></div> 0.1640
B	<div></div> 0.6660	<div></div> 0.1760
C	<div></div> 0.6400	<div></div> 0.1640
D	<div></div> 0.6610	<div></div> 0.1740

