



## Full wwPDB EM Validation Report ⓘ

Jun 17, 2025 – 12:25 PM JST

PDB ID : 7W72 / pdb\_00007w72  
EMDB ID : EMD-32336  
Title : Structure of a human glycosylphosphatidylinositol (GPI) transamidase  
Authors : Zhang, H.; Su, J.; Li, B.; Gao, Y.; Zhang, X.C.; Zhao, Y.  
Deposited on : 2021-12-02  
Resolution : 3.10 Å(reported)

This is a Full wwPDB EM Validation Report for a publicly released PDB entry.

We welcome your comments at [validation@mail.wwpdb.org](mailto:validation@mail.wwpdb.org)

A user guide is available at

<https://www.wwpdb.org/validation/2017/EMValidationReportHelp>

with specific help available everywhere you see the ⓘ symbol.

The types of validation reports are described at

<http://www.wwpdb.org/validation/2017/FAQs#types>.

---

The following versions of software and data (see [references ⓘ](#)) were used in the production of this report:

EMDB validation analysis : 0.0.1.dev118  
Mogul : 1.8.5 (274361), CSD as541be (2020)  
MolProbity : 4-5-2 with Phenix2.0rc1  
buster-report : 1.1.7 (2018)  
Percentile statistics : 20231227.v01 (using entries in the PDB archive December 27th 2023)  
MapQ : 1.9.13  
Ideal geometry (proteins) : Engh & Huber (2001)  
Ideal geometry (DNA, RNA) : Parkinson et al. (1996)  
Validation Pipeline (wwPDB-VP) : 2.44

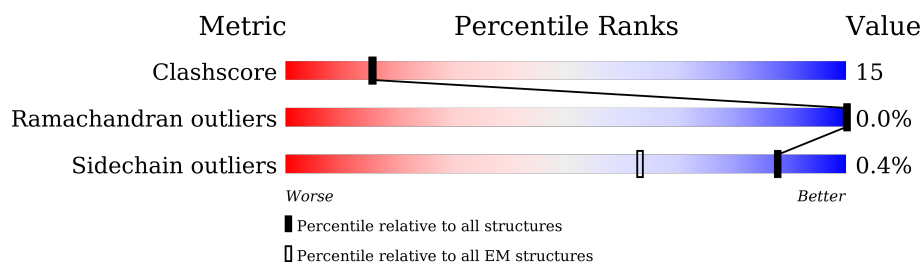
# 1 Overall quality at a glance

The following experimental techniques were used to determine the structure:

*ELECTRON MICROSCOPY*

The reported resolution of this entry is 3.10 Å.

Percentile scores (ranging between 0-100) for global validation metrics of the entry are shown in the following graphic. The table shows the number of entries on which the scores are based.



Metric	Whole archive (#Entries)	EM structures (#Entries)
Clashscore	210492	15764
Ramachandran outliers	207382	16835
Sidechain outliers	206894	16415

The table below summarises the geometric issues observed across the polymeric chains and their fit to the map. The red, orange, yellow and green segments of the bar indicate the fraction of residues that contain outliers for  $\geq 3$ , 2, 1 and 0 types of geometric quality criteria respectively. A grey segment represents the fraction of residues that are not modelled. The numeric value for each fraction is indicated below the corresponding segment, with a dot representing fractions  $\leq 5\%$ . The upper red bar (where present) indicates the fraction of residues that have poor fit to the EM map (all-atom inclusion  $< 40\%$ ). The numeric value is given above the bar.

Mol	Chain	Length	Quality of chain
1	U	420	 74% 26% 6%
2	S	533	 72% 28% 6%
3	T	527	 67% 31% 1%
4	K	395	 49% 32% 16%
5	A	621	 71% 24% 5%
6	N	3	 100%

## 2 Entry composition [i](#)

There are 9 unique types of molecules in this entry. The entry contains 19188 atoms, of which 0 are hydrogens and 0 are deuteriums.

In the tables below, the AltConf column contains the number of residues with at least one atom in alternate conformation and the Trace column contains the number of residues modelled with at most 2 atoms.

- Molecule 1 is a protein called Phosphatidylinositol glycan anchor biosynthesis class U protein.

Mol	Chain	Residues	Atoms					AltConf	Trace
1	U	420	Total	C	N	O	S	0	0
			3427	2344	509	558	16		

- Molecule 2 is a protein called GPI transamidase component PIG-S.

Mol	Chain	Residues	Atoms					AltConf	Trace
2	S	533	Total	C	N	O	S	0	0
			4150	2672	699	764	15		

There are 4 discrepancies between the modelled and reference sequences:

Chain	Residue	Modelled	Actual	Comment	Reference
S	80	ALA	GLU	conflict	UNP Q96S52
S	159	ALA	MET	conflict	UNP Q96S52
S	482	ALA	GLY	conflict	UNP Q96S52
S	505	ALA	PRO	conflict	UNP Q96S52

- Molecule 3 is a protein called GPI transamidase component PIG-T.

Mol	Chain	Residues	Atoms					AltConf	Trace
3	T	527	Total	C	N	O	S	0	0
			4268	2762	717	775	14		

There is a discrepancy between the modelled and reference sequences:

Chain	Residue	Modelled	Actual	Comment	Reference
T	26	ALA	-	expression tag	UNP Q969N2

- Molecule 4 is a protein called GPI-anchor transamidase.

Mol	Chain	Residues	Atoms					AltConf	Trace
4	K	330	Total	C	N	O	S	0	0
			2676	1711	459	490	16		

- Molecule 5 is a protein called Glycosylphosphatidylinositol anchor attachment 1 protein.

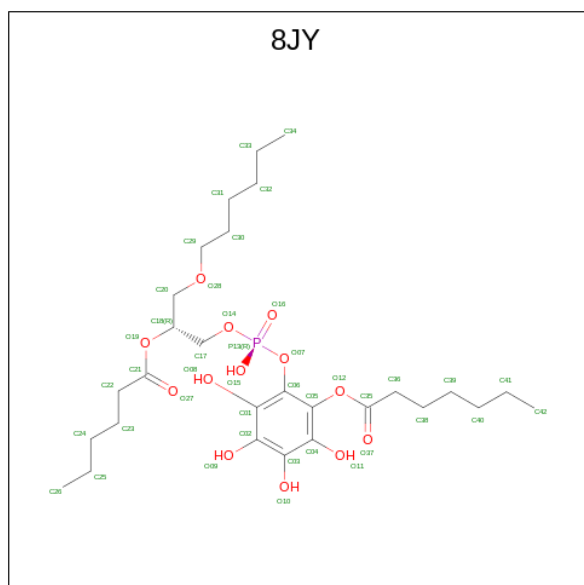
Mol	Chain	Residues	Atoms					AltConf	Trace
5	A	588	Total	C	N	O	S	0	0
			4557	2971	779	788	19		

- Molecule 6 is an oligosaccharide called beta-D-mannopyranose-(1-4)-2-acetamido-2-deoxy-beta-D-glucopyranose-(1-4)-2-acetamido-2-deoxy-beta-D-glucopyranose.



Mol	Chain	Residues	Atoms				AltConf	Trace
6	N	3	Total	C	N	O	0	0
			39	22	2	15		

- Molecule 7 is [2-[[[(2 {R})-2-hexanoyloxy-3-[( {E})-hex-3-enoyl]propoxy]-oxidanyl-phosphoryl]oxy-3,4,5,6-tetrakis(oxidanyl)phenyl] (2 {E},4 {E})-hepta-2,4-dienoate (CCD ID: 8JY) (formula: C<sub>28</sub>H<sub>47</sub>O<sub>13</sub>P) (labeled as "Ligand of Interest" by depositor).



Mol	Chain	Residues	Atoms				AltConf
7	U	1	Total	C	O	P	0
			42	28	13	1	

- Molecule 8 is 2-acetamido-2-deoxy-beta-D-glucopyranose (CCD ID: NAG) (formula: C<sub>8</sub>H<sub>15</sub>NO<sub>6</sub>).



Mol	Chain	Residues	Atoms				AltConf
			Total	C	N	O	
8	S	1	14	8	1	5	0
8	T	1	14	8	1	5	0

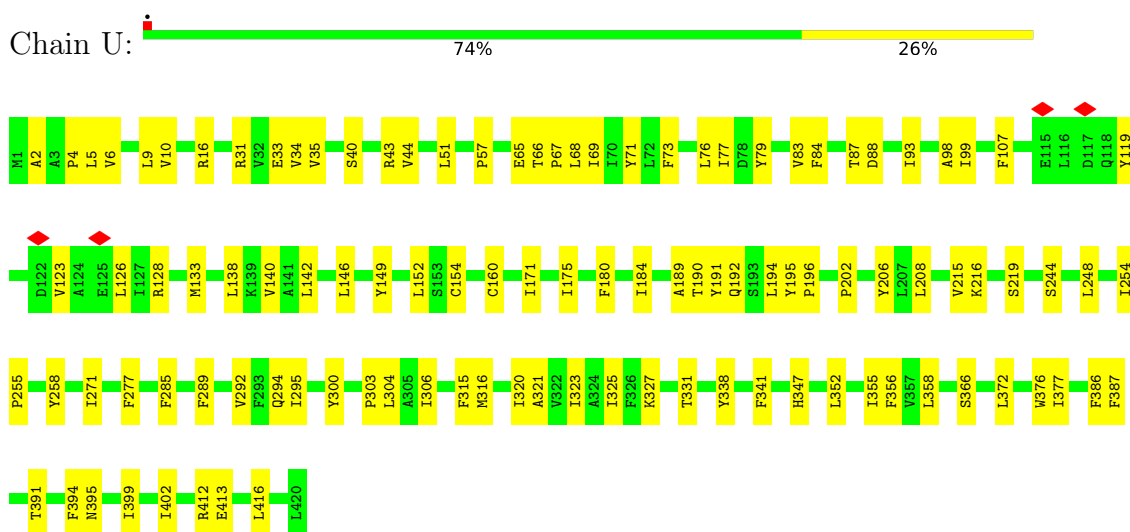
- Molecule 9 is CALCIUM ION (CCD ID: CA) (formula: Ca).

Mol	Chain	Residues	Atoms		AltConf
			Total	Ca	
9	K	1	1	1	0

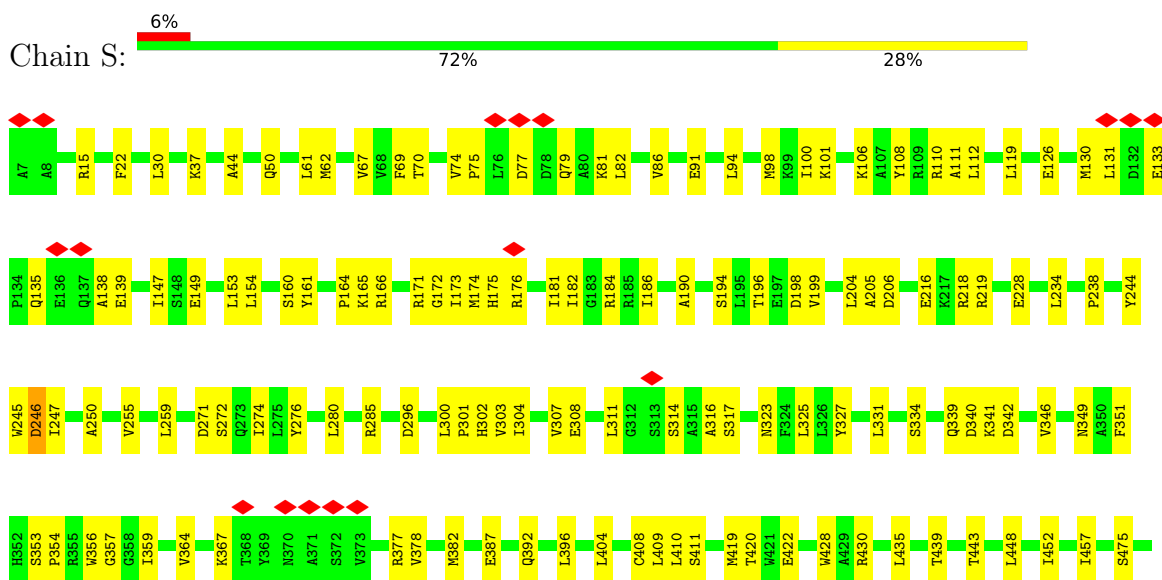
### 3 Residue-property plots

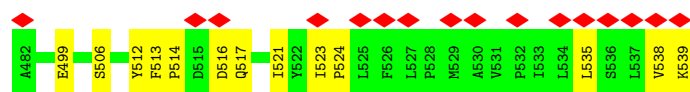
These plots are drawn for all protein, RNA, DNA and oligosaccharide chains in the entry. The first graphic for a chain summarises the proportions of the various outlier classes displayed in the second graphic. The second graphic shows the sequence view annotated by issues in geometry and atom inclusion in map density. Residues are color-coded according to the number of geometric quality criteria for which they contain at least one outlier: green = 0, yellow = 1, orange = 2 and red = 3 or more. A red diamond above a residue indicates a poor fit to the EM map for this residue (all-atom inclusion < 40%). Stretches of 2 or more consecutive residues without any outlier are shown as a green connector. Residues present in the sample, but not in the model, are shown in grey.

- Molecule 1: Phosphatidylinositol glycan anchor biosynthesis class U protein



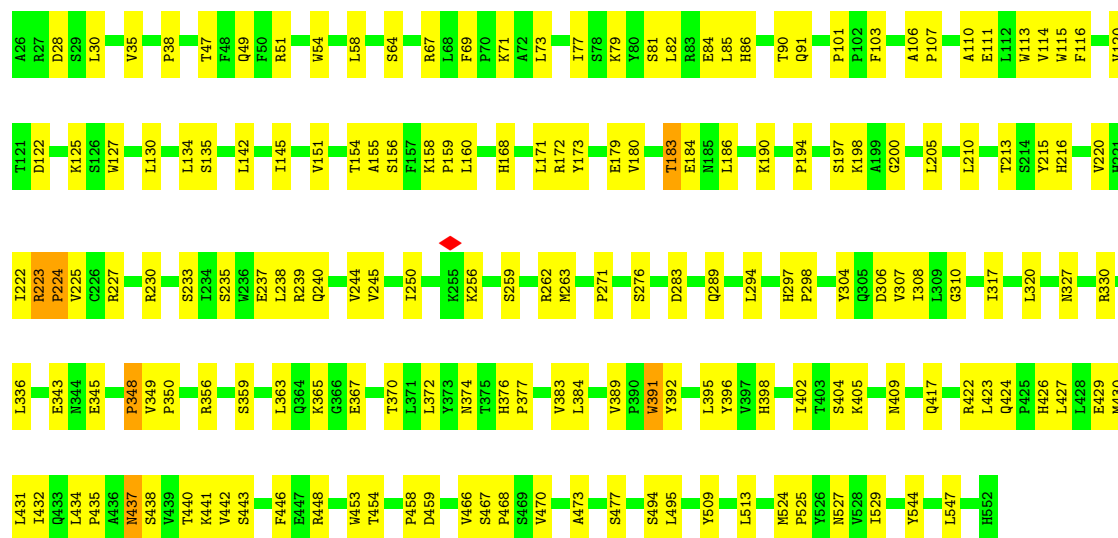
- Molecule 2: GPI transamidase component PIG-S





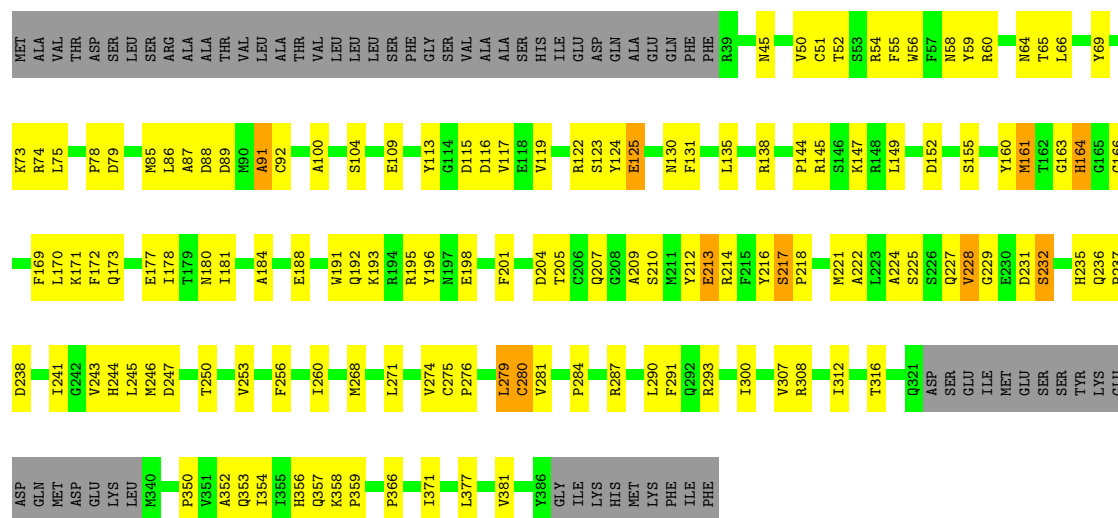
• Molecule 3: GPI transamidase component PIG-T

Chain T: 67% 31%



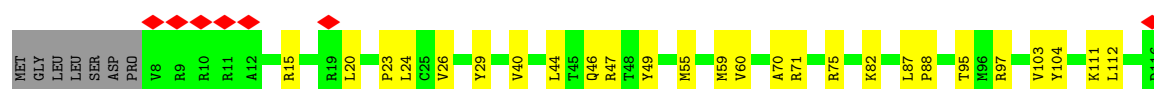
• Molecule 4: GPI-anchor transamidase

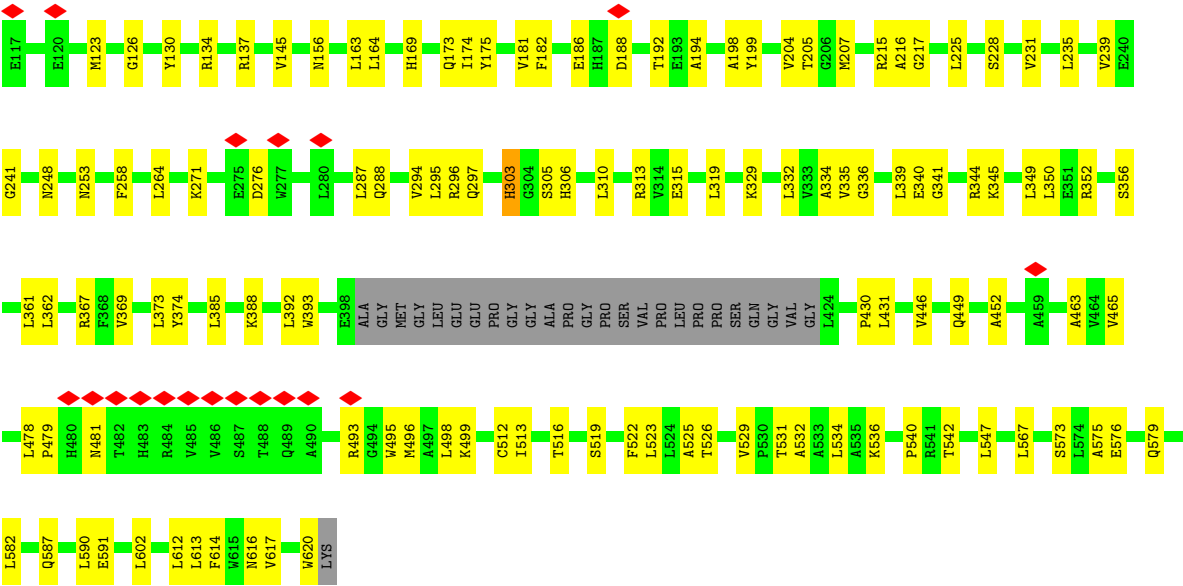
Chain K: 49% 32% 16%



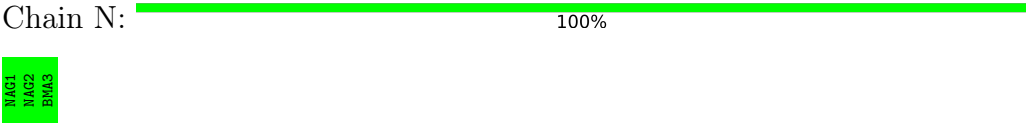
• Molecule 5: Glycosylphosphatidylinositol anchor attachment 1 protein

Chain A: 71% 24% 5%





● Molecule 6: beta-D-mannopyranose-(1-4)-2-acetamido-2-deoxy-beta-D-glucopyranose-(1-4)-2-acetamido-2-deoxy-beta-D-glucopyranose





## 4 Experimental information

Property	Value	Source
EM reconstruction method	SINGLE PARTICLE	Depositor
Imposed symmetry	POINT, Not provided	
Number of particles used	61148	Depositor
Resolution determination method	FSC 0.143 CUT-OFF	Depositor
CTF correction method	PHASE FLIPPING ONLY	Depositor
Microscope	FEI TITAN KRIOS	Depositor
Voltage (kV)	300	Depositor
Electron dose ( $e^-/\text{\AA}^2$ )	60	Depositor
Minimum defocus (nm)	12000	Depositor
Maximum defocus (nm)	22000	Depositor
Magnification	Not provided	
Image detector	GATAN K2 SUMMIT (4k x 4k)	Depositor
Maximum map value	0.111	Depositor
Minimum map value	-0.051	Depositor
Average map value	0.000	Depositor
Map value standard deviation	0.003	Depositor
Recommended contour level	0.015	Depositor
Map size ( $\text{\AA}$ )	332.8, 332.8, 332.8	wwPDB
Map dimensions	320, 320, 320	wwPDB
Map angles ( $^\circ$ )	90.0, 90.0, 90.0	wwPDB
Pixel spacing ( $\text{\AA}$ )	1.04, 1.04, 1.04	Depositor

## 5 Model quality [i](#)

### 5.1 Standard geometry [i](#)

Bond lengths and bond angles in the following residue types are not validated in this section: BMA, CA, 8JY, NAG

The Z score for a bond length (or angle) is the number of standard deviations the observed value is removed from the expected value. A bond length (or angle) with  $|Z| > 5$  is considered an outlier worth inspection. RMSZ is the root-mean-square of all Z scores of the bond lengths (or angles).

Mol	Chain	Bond lengths		Bond angles	
		RMSZ	# Z  >5	RMSZ	# Z  >5
1	U	0.20	0/3537	0.37	0/4829
2	S	0.22	0/4247	0.44	1/5786 (0.0%)
3	T	0.44	2/4399 (0.0%)	0.66	14/6018 (0.2%)
4	K	0.49	1/2744 (0.0%)	0.85	12/3723 (0.3%)
5	A	0.25	0/4667	0.45	2/6361 (0.0%)
All	All	0.33	3/19594 (0.0%)	0.56	29/26717 (0.1%)

All (3) bond length outliers are listed below:

Mol	Chain	Res	Type	Atoms	Z	Observed(Å)	Ideal(Å)
3	T	224	PRO	N-CA	18.53	1.70	1.47
3	T	223	ARG	C-N	11.55	1.45	1.33
4	K	217	SER	C-N	6.96	1.50	1.33

All (29) bond angle outliers are listed below:

Mol	Chain	Res	Type	Atoms	Z	Observed(°)	Ideal(°)
3	T	223	ARG	CA-C-N	16.05	139.97	120.23
3	T	223	ARG	C-N-CA	16.05	139.97	120.23
4	K	228	VAL	CB-CA-C	14.89	130.93	111.88
4	K	217	SER	CA-C-N	14.18	137.57	119.84
4	K	217	SER	C-N-CA	14.18	137.57	119.84
3	T	224	PRO	N-CA-C	-11.27	92.80	110.50
3	T	423	LEU	N-CA-CB	-10.87	96.63	110.98
5	A	303	HIS	N-CA-C	-10.01	94.88	109.59
2	S	246	ASP	N-CA-C	-10.01	94.74	109.15
3	T	225	VAL	N-CA-C	-9.66	93.11	108.86
4	K	164	HIS	N-CA-C	-9.61	96.95	110.50
4	K	164	HIS	CB-CA-C	9.44	126.91	109.54
3	T	224	PRO	CB-CA-C	9.12	121.50	111.56

*Continued on next page...*

*Continued from previous page...*

Mol	Chain	Res	Type	Atoms	Z	Observed(°)	Ideal(°)
3	T	224	PRO	CA-N-CD	-9.01	99.38	112.00
4	K	280	CYS	N-CA-C	-8.74	95.00	109.07
4	K	279	LEU	N-CA-C	8.64	124.48	112.04
4	K	229	GLY	N-CA-C	7.44	130.81	113.18
3	T	437	ASN	N-CA-C	-7.37	98.75	109.59
3	T	391	TRP	CB-CA-C	-7.22	100.01	111.48
3	T	392	TYR	N-CA-C	-6.59	103.48	113.89
4	K	279	LEU	CB-CA-C	-6.46	98.74	110.56
4	K	91	ALA	N-CA-C	-6.33	105.20	113.12
3	T	183	THR	N-CA-C	-5.82	106.27	113.19
4	K	232	SER	N-CA-C	-5.80	101.71	110.24
4	K	232	SER	CB-CA-C	5.78	118.50	109.84
5	A	303	HIS	CB-CA-C	5.58	118.62	110.26
3	T	183	THR	CB-CA-C	5.57	121.08	110.27
3	T	392	TYR	N-CA-CB	5.47	118.83	110.95
3	T	225	VAL	N-CA-CB	5.19	121.53	111.93

There are no chirality outliers.

There are no planarity outliers.

## 5.2 Too-close contacts

In the following table, the Non-H and H(model) columns list the number of non-hydrogen atoms and hydrogen atoms in the chain respectively. The H(added) column lists the number of hydrogen atoms added and optimized by MolProbity. The Clashes column lists the number of clashes within the asymmetric unit, whereas Symm-Clashes lists symmetry-related clashes.

Mol	Chain	Non-H	H(model)	H(added)	Clashes	Symm-Clashes
1	U	3427	0	3505	80	0
2	S	4150	0	4187	121	0
3	T	4268	0	4213	132	0
4	K	2676	0	2631	160	0
5	A	4557	0	4672	106	0
6	N	39	0	34	0	0
7	U	42	0	0	1	0
8	S	14	0	13	0	0
8	T	14	0	13	0	0
9	K	1	0	0	0	0
All	All	19188	0	19268	559	0

The all-atom clashscore is defined as the number of clashes found per 1000 atoms (including

hydrogen atoms). The all-atom clashscore for this structure is 15.

All (559) close contacts within the same asymmetric unit are listed below, sorted by their clash magnitude.

Atom-1	Atom-2	Interatomic distance (Å)	Clash overlap (Å)
3:T:224:PRO:N	3:T:224:PRO:CA	1.70	1.44
4:K:104:SER:HB3	4:K:246:MET:CE	1.64	1.27
4:K:104:SER:CB	4:K:246:MET:CE	2.19	1.20
4:K:104:SER:CB	4:K:246:MET:HE3	1.74	1.13
3:T:391:TRP:O	3:T:391:TRP:CE3	2.09	1.06
4:K:56:TRP:O	4:K:243:VAL:HG11	1.58	1.04
4:K:104:SER:HB3	4:K:246:MET:HE3	1.02	0.99
4:K:188:GLU:HG2	4:K:216:TYR:OH	1.61	0.98
4:K:59:TYR:CB	4:K:243:VAL:HG21	1.98	0.93
4:K:188:GLU:CD	4:K:216:TYR:CE1	2.45	0.93
4:K:188:GLU:CD	4:K:216:TYR:HE1	1.77	0.91
5:A:313:ARG:O	5:A:352:ARG:NH2	2.03	0.91
4:K:210:SER:HB3	4:K:228:VAL:HG22	1.53	0.88
4:K:209:ALA:HA	4:K:212:TYR:CE2	2.08	0.88
3:T:374:ASN:O	3:T:437:ASN:HA	1.73	0.87
2:S:246:ASP:O	2:S:382:MET:HG3	1.75	0.87
3:T:224:PRO:N	3:T:224:PRO:C	2.34	0.86
2:S:81:LYS:HB2	2:S:110:ARG:HH21	1.42	0.84
3:T:391:TRP:O	3:T:391:TRP:HE3	1.58	0.83
1:U:304:LEU:HD23	3:T:547:LEU:HD21	1.59	0.82
2:S:323:ASN:O	2:S:357:GLY:HA3	1.77	0.82
4:K:59:TYR:HB3	4:K:243:VAL:HG21	1.60	0.81
4:K:170:LEU:CD1	4:K:205:THR:HG21	2.10	0.81
4:K:169:PHE:HD1	4:K:177:GLU:OE2	1.63	0.80
3:T:430:MET:HE3	3:T:432:ILE:HD11	1.63	0.79
5:A:70:ALA:HB3	5:A:332:LEU:HD13	1.65	0.79
2:S:75:PRO:HD2	2:S:174:MET:HG3	1.63	0.79
1:U:372:LEU:HD13	1:U:386:PHE:HB3	1.65	0.78
4:K:221:MET:HE1	4:K:268:MET:HG3	1.65	0.78
5:A:70:ALA:CB	5:A:332:LEU:HD13	2.13	0.78
4:K:104:SER:OG	4:K:246:MET:CE	2.32	0.78
3:T:430:MET:HE1	3:T:442:VAL:HG21	1.64	0.78
5:A:163:LEU:HD21	5:A:182:PHE:HB3	1.65	0.77
4:K:59:TYR:HB3	4:K:243:VAL:CG2	2.14	0.77
2:S:535:LEU:HA	2:S:538:VAL:HG12	1.67	0.77
4:K:188:GLU:CG	4:K:216:TYR:CE1	2.68	0.77
4:K:236:GLN:H	4:K:244:HIS:CD2	2.02	0.77
5:A:349:LEU:O	5:A:350:LEU:HG	1.85	0.76

*Continued on next page...*

*Continued from previous page...*

Atom-1	Atom-2	Interatomic distance (Å)	Clash overlap (Å)
5:A:513:ILE:HG12	5:A:602:LEU:HD21	1.67	0.76
2:S:304:ILE:HD11	4:K:308:ARG:HD2	1.68	0.76
4:K:237:PRO:HB2	5:A:59:MET:HG2	1.66	0.76
4:K:170:LEU:HD11	4:K:205:THR:HG21	1.67	0.75
4:K:268:MET:HE2	4:K:300:ILE:HG22	1.67	0.75
2:S:196:THR:HG22	2:S:199:VAL:HG23	1.70	0.74
2:S:172:GLY:HA2	2:S:182:ILE:HD11	1.68	0.74
4:K:169:PHE:CD1	4:K:177:GLU:OE2	2.40	0.74
4:K:188:GLU:HG2	4:K:216:TYR:CZ	2.22	0.74
2:S:98:MET:HE3	2:S:100:ILE:HD11	1.70	0.73
3:T:271:PRO:HB3	3:T:320:LEU:HB3	1.70	0.73
3:T:359:SER:HB2	3:T:367:GLU:HB2	1.70	0.73
3:T:227:ARG:HD2	3:T:233:SER:OG	1.89	0.72
3:T:404:SER:HA	3:T:440:THR:HA	1.70	0.72
4:K:235:HIS:HA	4:K:244:HIS:CD2	2.25	0.72
5:A:111:LYS:HG3	5:A:123:MET:HE1	1.70	0.72
3:T:49:GLN:HE22	3:T:495:LEU:HD21	1.54	0.72
5:A:241:GLY:HA3	5:A:310:LEU:HD12	1.72	0.71
4:K:59:TYR:HB2	4:K:243:VAL:HG21	1.73	0.71
4:K:212:TYR:HE2	4:K:224:ALA:HB2	1.54	0.70
4:K:74:ARG:NH2	4:K:260:ILE:O	2.25	0.70
4:K:123:SER:O	4:K:173:GLN:NE2	2.25	0.70
4:K:271:LEU:HG	4:K:271:LEU:O	1.93	0.69
1:U:34:VAL:HG23	1:U:35:VAL:HG23	1.74	0.69
4:K:135:LEU:O	4:K:195:ARG:NH2	2.26	0.69
4:K:188:GLU:HA	4:K:217:SER:OG	1.93	0.69
3:T:91:GLN:HE22	5:A:137:ARG:HE	1.40	0.69
5:A:126:GLY:HA3	5:A:186:GLU:HG2	1.74	0.69
5:A:46:GLN:HG2	5:A:47:ARG:H	1.58	0.69
4:K:184:ALA:CB	4:K:214:ARG:O	2.42	0.68
4:K:64:ASN:ND2	4:K:247:ASP:OD2	2.25	0.68
3:T:38:PRO:HD2	3:T:283:ASP:HB3	1.76	0.68
3:T:190:LYS:HD2	3:T:197:SER:HB3	1.75	0.68
4:K:188:GLU:CG	4:K:216:TYR:OH	2.39	0.68
3:T:239:ARG:NH2	3:T:494:SER:OG	2.26	0.68
5:A:332:LEU:O	5:A:336:GLY:N	2.16	0.68
3:T:156:SER:OG	3:T:429:GLU:OE1	2.11	0.67
3:T:113:TRP:HB3	3:T:173:TYR:HD1	1.60	0.67
5:A:430:PRO:HB3	5:A:616:ASN:HD22	1.57	0.67
4:K:235:HIS:HA	4:K:244:HIS:HD2	1.59	0.67
2:S:499:GLU:OE2	4:K:193:LYS:NZ	2.26	0.67

*Continued on next page...*

*Continued from previous page...*

Atom-1	Atom-2	Interatomic distance (Å)	Clash overlap (Å)
2:S:149:GLU:O	2:S:171:ARG:NH1	2.28	0.66
3:T:356:ARG:HG2	3:T:513:LEU:HD11	1.77	0.66
1:U:9:LEU:HD11	1:U:93:ILE:HD11	1.76	0.66
2:S:404:LEU:HD21	2:S:410:LEU:HD21	1.77	0.66
4:K:188:GLU:CG	4:K:216:TYR:CZ	2.79	0.66
4:K:104:SER:CB	4:K:246:MET:HE2	2.23	0.66
1:U:123:VAL:HG13	1:U:126:LEU:HB3	1.78	0.66
4:K:210:SER:HB3	4:K:228:VAL:CG2	2.25	0.66
1:U:160:CYS:SG	1:U:331:THR:OG1	2.54	0.65
4:K:104:SER:CA	4:K:246:MET:HE3	2.25	0.65
5:A:204:VAL:HG13	5:A:205:THR:HG23	1.76	0.65
3:T:289:GLN:NE2	3:T:345:GLU:OE2	2.30	0.65
5:A:55:MET:HB2	5:A:345:LYS:HG2	1.79	0.65
4:K:59:TYR:CB	4:K:243:VAL:CG2	2.74	0.65
4:K:164:HIS:O	4:K:170:LEU:HD12	1.97	0.65
1:U:289:PHE:HA	1:U:292:VAL:HG22	1.79	0.64
3:T:391:TRP:O	3:T:391:TRP:CD2	2.51	0.64
4:K:115:ASP:O	4:K:115:ASP:OD1	2.15	0.64
3:T:524:MET:HG3	3:T:527:ASN:HB2	1.79	0.64
5:A:271:LYS:NZ	5:A:288:GLN:OE1	2.30	0.64
3:T:250:ILE:HG21	5:A:174:ILE:HD13	1.80	0.64
4:K:188:GLU:HB2	4:K:216:TYR:CZ	2.33	0.64
4:K:207:GLN:HA	4:K:227:GLN:O	1.97	0.64
4:K:55:PHE:O	5:A:350:LEU:HD21	1.98	0.64
1:U:190:THR:HA	1:U:196:PRO:HD2	1.80	0.64
4:K:287:ARG:HH22	4:K:290:LEU:HD11	1.63	0.64
3:T:466:VAL:HB	3:T:513:LEU:HB2	1.78	0.63
4:K:188:GLU:HG2	4:K:216:TYR:CE1	2.33	0.63
5:A:248:ASN:H	5:A:315:GLU:HG3	1.64	0.63
4:K:166:GLY:HA3	4:K:169:PHE:CE2	2.34	0.63
3:T:184:GLU:HG3	4:K:113:TYR:OH	1.98	0.63
4:K:170:LEU:HD13	4:K:205:THR:HG21	1.80	0.63
4:K:366:PRO:HG2	4:K:371:ILE:HD11	1.80	0.63
3:T:417:GLN:HG2	3:T:427:LEU:HB3	1.80	0.62
2:S:205:ALA:O	2:S:218:ARG:NH1	2.31	0.62
4:K:188:GLU:OE2	4:K:216:TYR:CE1	2.51	0.62
2:S:79:GLN:NE2	2:S:81:LYS:O	2.32	0.62
5:A:70:ALA:HB3	5:A:332:LEU:CD1	2.29	0.62
5:A:156:ASN:H	5:A:228:SER:HB3	1.64	0.62
4:K:69:TYR:OH	4:K:79:ASP:OD1	2.18	0.62
3:T:101:PRO:HD3	3:T:350:PRO:HB3	1.82	0.61

*Continued on next page...*

*Continued from previous page...*

Atom-1	Atom-2	Interatomic distance (Å)	Clash overlap (Å)
3:T:28:ASP:HB3	3:T:54:TRP:CD1	2.35	0.61
5:A:297:GLN:OE1	5:A:519:SER:OG	2.16	0.61
5:A:288:GLN:HG3	5:A:567:LEU:HD22	1.82	0.61
5:A:49:TYR:O	5:A:253:ASN:ND2	2.34	0.61
1:U:395:ASN:O	1:U:399:ILE:HG12	2.00	0.61
4:K:54:ARG:HA	4:K:88:ASP:HB2	1.82	0.61
2:S:316:ALA:O	3:T:79:LYS:NZ	2.34	0.61
4:K:212:TYR:CE2	4:K:224:ALA:HB2	2.35	0.61
1:U:376:TRP:NE1	1:U:387:PHE:HB2	2.15	0.60
3:T:154:THR:N	3:T:429:GLU:OE2	2.29	0.60
4:K:221:MET:HE2	4:K:291:PHE:CE2	2.36	0.60
5:A:446:VAL:O	5:A:449:GLN:NE2	2.29	0.60
3:T:81:SER:HB2	3:T:120:VAL:HG22	1.83	0.59
3:T:183:THR:HA	3:T:186:LEU:HB3	1.83	0.59
3:T:116:PHE:HB3	3:T:120:VAL:HG21	1.83	0.59
3:T:327:ASN:H	3:T:330:ARG:HB3	1.67	0.59
4:K:104:SER:OG	4:K:246:MET:HE2	2.01	0.59
3:T:306:ASP:OD1	3:T:307:VAL:N	2.35	0.59
3:T:82:LEU:HD23	3:T:85:LEU:HB2	1.84	0.59
3:T:365:LYS:O	3:T:448:ARG:NH1	2.36	0.59
4:K:256:PHE:HB2	4:K:274:VAL:CG2	2.33	0.59
3:T:73:LEU:HD12	3:T:238:LEU:HD11	1.85	0.59
1:U:34:VAL:HG11	1:U:152:LEU:HB3	1.83	0.58
2:S:285:ARG:NH2	2:S:339:GLN:OE1	2.36	0.58
4:K:209:ALA:HA	4:K:212:TYR:HE2	1.64	0.58
3:T:356:ARG:NH1	3:T:467:SER:O	2.36	0.58
4:K:52:THR:HB	4:K:172:PHE:HA	1.84	0.58
4:K:196:TYR:OH	4:K:217:SER:HB3	2.04	0.58
4:K:104:SER:HB3	4:K:246:MET:HE1	1.74	0.58
4:K:163:GLY:O	4:K:205:THR:HG22	2.02	0.58
1:U:195:TYR:OH	1:U:294:GLN:OE1	2.21	0.58
4:K:188:GLU:CB	4:K:216:TYR:CZ	2.87	0.58
4:K:210:SER:CB	4:K:228:VAL:HG22	2.30	0.58
1:U:2:ALA:HB3	1:U:5:LEU:HB3	1.85	0.57
4:K:73:LYS:NZ	4:K:79:ASP:OD2	2.38	0.57
5:A:349:LEU:C	5:A:350:LEU:HG	2.30	0.57
5:A:134:ARG:HH12	5:A:216:ALA:HA	1.68	0.57
2:S:182:ILE:O	2:S:186:ILE:HG12	2.03	0.57
1:U:84:PHE:HA	1:U:87:THR:HG22	1.86	0.57
3:T:220:VAL:HG22	3:T:240:GLN:HG2	1.84	0.57
3:T:395:LEU:HD23	3:T:446:PHE:HB3	1.85	0.57

*Continued on next page...*



*Continued from previous page...*

Atom-1	Atom-2	Interatomic distance (Å)	Clash overlap (Å)
1:U:98:ALA:HB1	1:U:175:ILE:HD12	1.87	0.56
3:T:304:TYR:HB2	3:T:317:ILE:HD11	1.87	0.56
4:K:104:SER:CA	4:K:246:MET:CE	2.82	0.56
1:U:376:TRP:HE1	1:U:387:PHE:HB2	1.69	0.56
1:U:325:ILE:HG21	1:U:399:ILE:HD11	1.88	0.56
2:S:314:SER:O	3:T:71:LYS:NZ	2.35	0.56
3:T:91:GLN:HG2	3:T:216:HIS:HB3	1.86	0.56
5:A:493:ARG:HA	5:A:496:MET:HG3	1.87	0.56
2:S:274:ILE:HD12	3:T:67:ARG:HG3	1.87	0.56
4:K:213:GLU:O	4:K:213:GLU:HG2	2.06	0.55
5:A:44:LEU:HD22	5:A:373:LEU:HD22	1.88	0.55
4:K:212:TYR:CE1	4:K:287:ARG:HB2	2.40	0.55
2:S:234:LEU:HD21	2:S:307:VAL:HG21	1.88	0.55
2:S:538:VAL:HG13	2:S:539:LYS:HG3	1.89	0.55
1:U:412:ARG:NH1	1:U:416:LEU:HD11	2.20	0.55
1:U:16:ARG:HD3	1:U:154:CYS:SG	2.47	0.55
2:S:387:GLU:HB3	4:K:316:THR:HG23	1.89	0.55
4:K:238:ASP:O	4:K:241:ILE:O	2.25	0.55
4:K:184:ALA:HB1	4:K:214:ARG:O	2.06	0.55
2:S:331:LEU:HD21	2:S:367:LYS:HZ3	1.71	0.54
3:T:51:ARG:NE	3:T:237:GLU:OE1	2.27	0.54
5:A:173:GLN:HB3	5:A:175:TYR:CE2	2.42	0.54
1:U:67:PRO:HD2	1:U:191:TYR:HH	1.72	0.54
2:S:126:GLU:O	2:S:130:MET:HG2	2.07	0.54
2:S:353:SER:HB2	2:S:356:TRP:HB3	1.89	0.54
2:S:135:GLN:HG3	2:S:138:ALA:HB2	1.90	0.54
3:T:90:THR:OG1	3:T:107:PRO:O	2.26	0.54
3:T:180:VAL:O	4:K:122:ARG:NH1	2.39	0.54
4:K:275:CYS:HB3	4:K:284:PRO:HG2	1.89	0.54
5:A:369:VAL:HG23	5:A:374:TYR:HD2	1.73	0.54
2:S:308:GLU:HG3	4:K:78:PRO:HB3	1.90	0.54
5:A:573:SER:OG	5:A:576:GLU:OE1	2.26	0.54
1:U:413:GLU:HA	1:U:416:LEU:HD12	1.90	0.53
5:A:20:LEU:O	5:A:24:LEU:HB2	2.08	0.53
2:S:147:ILE:HG21	2:S:153:LEU:HD12	1.89	0.53
3:T:459:ASP:OD1	3:T:459:ASP:N	2.42	0.53
5:A:495:TRP:CE3	5:A:496:MET:HG2	2.43	0.53
4:K:198:GLU:OE2	4:K:293:ARG:NH2	2.41	0.53
5:A:264:LEU:HD11	5:A:334:ALA:HB1	1.90	0.53
4:K:256:PHE:HB2	4:K:274:VAL:HG23	1.90	0.53
4:K:260:ILE:HD13	4:K:300:ILE:HD11	1.90	0.53

*Continued on next page...*



*Continued from previous page...*

Atom-1	Atom-2	Interatomic distance (Å)	Clash overlap (Å)
4:K:54:ARG:O	4:K:58:ASN:ND2	2.34	0.53
5:A:60:VAL:HG13	5:A:344:ARG:HG2	1.90	0.53
2:S:70:THR:HA	2:S:111:ALA:HB2	1.91	0.53
3:T:184:GLU:HG2	4:K:119:VAL:HG23	1.90	0.53
1:U:189:ALA:HB1	1:U:196:PRO:HG2	1.90	0.53
2:S:216:GLU:HA	2:S:219:ARG:HD2	1.90	0.53
2:S:340:ASP:HB3	2:S:346:VAL:HG12	1.91	0.53
2:S:331:LEU:HA	2:S:334:SER:HB2	1.91	0.53
5:A:495:TRP:HZ2	5:A:536:LYS:HA	1.74	0.53
1:U:67:PRO:HG2	1:U:244:SER:HB2	1.90	0.53
1:U:304:LEU:HB2	1:U:315:PHE:HE1	1.74	0.53
2:S:81:LYS:HB2	2:S:110:ARG:NH2	2.17	0.53
4:K:92:CYS:HB3	4:K:100:ALA:H	1.74	0.52
3:T:383:VAL:HG22	3:T:473:ALA:HB2	1.92	0.52
1:U:325:ILE:HD13	1:U:399:ILE:HD13	1.90	0.52
2:S:154:LEU:HB2	2:S:171:ARG:HH21	1.73	0.52
4:K:161:MET:HE2	4:K:170:LEU:HD23	1.91	0.52
4:K:212:TYR:HE1	4:K:287:ARG:HB2	1.72	0.52
2:S:506:SER:O	2:S:512:TYR:OH	2.23	0.52
5:A:512:CYS:O	5:A:516:THR:HG23	2.10	0.52
3:T:470:VAL:HG22	3:T:509:TYR:CE2	2.45	0.52
3:T:389:VAL:HG21	3:T:395:LEU:HD11	1.92	0.52
5:A:587:GLN:O	5:A:591:GLU:HG2	2.09	0.52
1:U:377:ILE:HG23	3:T:363:LEU:HB2	1.91	0.52
2:S:154:LEU:HB2	2:S:171:ARG:NH2	2.25	0.52
5:A:362:LEU:HB2	5:A:367:ARG:O	2.10	0.52
3:T:184:GLU:HG2	4:K:119:VAL:CG2	2.39	0.51
4:K:212:TYR:HE2	4:K:224:ALA:CB	2.21	0.51
1:U:285:PHE:CE2	2:S:521:ILE:HD12	2.46	0.51
1:U:271:ILE:HD12	1:U:394:PHE:HE2	1.75	0.51
2:S:410:LEU:HD12	2:S:419:MET:HE1	1.92	0.51
2:S:317:SER:O	4:K:145:ARG:HD2	2.11	0.51
2:S:448:LEU:HD22	4:K:138:ARG:HH22	1.76	0.51
3:T:348:PRO:O	3:T:349:VAL:HG13	2.10	0.51
4:K:352:ALA:O	4:K:356:HIS:ND1	2.43	0.51
5:A:70:ALA:HB1	5:A:332:LEU:HD13	1.89	0.51
4:K:64:ASN:HD21	4:K:247:ASP:CG	2.19	0.51
1:U:66:THR:OG1	1:U:192:GLN:OE1	2.20	0.51
3:T:402:ILE:HG22	3:T:409:ASN:HB3	1.91	0.51
4:K:104:SER:CB	4:K:246:MET:HE1	2.30	0.51
5:A:495:TRP:HE3	5:A:496:MET:HG2	1.76	0.51

*Continued on next page...*

*Continued from previous page...*

Atom-1	Atom-2	Interatomic distance (Å)	Clash overlap (Å)
4:K:188:GLU:O	4:K:192:GLN:HG2	2.11	0.50
1:U:323:ILE:O	1:U:327:LYS:HB2	2.12	0.50
3:T:376:HIS:HD2	3:T:377:PRO:HD2	1.76	0.50
2:S:110:ARG:HB2	2:S:110:ARG:CZ	2.41	0.50
5:A:385:LEU:HD11	5:A:529:VAL:HG22	1.94	0.50
2:S:161:TYR:HD1	2:S:409:LEU:HB2	1.76	0.50
2:S:325:LEU:HD11	2:S:356:TRP:HH2	1.77	0.50
2:S:516:ASP:N	2:S:516:ASP:OD1	2.43	0.50
3:T:183:THR:HG22	4:K:113:TYR:CE2	2.47	0.50
3:T:110:ALA:HB2	3:T:179:GLU:HG2	1.92	0.50
3:T:524:MET:N	3:T:525:PRO:HD3	2.26	0.50
5:A:498:LEU:HD22	5:A:620:TRP:HZ3	1.77	0.50
2:S:346:VAL:HG11	4:K:312:ILE:HD12	1.92	0.50
5:A:46:GLN:OE1	5:A:46:GLN:N	2.41	0.50
1:U:142:LEU:HD11	1:U:146:LEU:HD22	1.93	0.50
2:S:245:TRP:CZ3	2:S:247:ILE:HD13	2.46	0.50
3:T:458:PRO:HD2	4:K:124:TYR:CD1	2.47	0.50
5:A:495:TRP:CZ2	5:A:536:LYS:HA	2.46	0.50
2:S:181:ILE:HG12	2:S:184:ARG:HH22	1.77	0.50
4:K:250:THR:HA	4:K:253:VAL:HB	1.93	0.50
4:K:354:ILE:O	4:K:357:GLN:HG2	2.12	0.50
5:A:248:ASN:OD1	5:A:356:SER:OG	2.30	0.50
2:S:219:ARG:HG2	2:S:354:PRO:HB3	1.92	0.49
2:S:86:VAL:HG22	2:S:106:LYS:HB2	1.93	0.49
2:S:139:GLU:HG2	2:S:166:ARG:NH2	2.26	0.49
2:S:175:HIS:NE2	2:S:181:ILE:HD12	2.27	0.49
2:S:196:THR:HG23	2:S:198:ASP:H	1.77	0.49
4:K:152:ASP:OD1	4:K:155:SER:OG	2.27	0.49
1:U:68:LEU:HD23	1:U:191:TYR:CZ	2.46	0.49
1:U:303:PRO:HG3	2:S:22:PHE:CD2	2.48	0.49
3:T:431:LEU:HD12	4:K:354:ILE:HD11	1.93	0.49
2:S:346:VAL:HG23	2:S:349:ASN:H	1.78	0.49
1:U:76:LEU:HB3	1:U:83:VAL:HG21	1.94	0.49
2:S:164:PRO:HA	2:S:419:MET:HG2	1.95	0.49
2:S:419:MET:HB2	2:S:422:GLU:HG3	1.95	0.49
4:K:169:PHE:CD1	4:K:177:GLU:CD	2.91	0.49
4:K:184:ALA:HB2	4:K:214:ARG:O	2.11	0.49
4:K:191:TRP:CE2	4:K:218:PRO:HG2	2.48	0.49
2:S:228:GLU:OE2	2:S:317:SER:OG	2.20	0.48
4:K:125:GLU:O	4:K:130:ASN:ND2	2.46	0.48
2:S:70:THR:HA	2:S:111:ALA:CB	2.43	0.48

*Continued on next page...*

*Continued from previous page...*

Atom-1	Atom-2	Interatomic distance (Å)	Clash overlap (Å)
3:T:155:ALA:HA	3:T:168:HIS:NE2	2.29	0.48
3:T:453:TRP:CE2	3:T:454:THR:HG23	2.48	0.48
5:A:296:ARG:HG2	5:A:303:HIS:CE1	2.47	0.48
5:A:392:LEU:HD21	5:A:499:LYS:HB3	1.95	0.48
5:A:465:VAL:HG11	5:A:582:LEU:HD13	1.94	0.48
4:K:92:CYS:O	5:A:137:ARG:NH2	2.42	0.48
1:U:295:ILE:HD13	2:S:30:LEU:HD21	1.93	0.48
2:S:161:TYR:CD1	2:S:409:LEU:HB2	2.48	0.48
2:S:439:THR:O	2:S:443:THR:HG23	2.13	0.48
4:K:89:ASP:C	4:K:91:ALA:N	2.70	0.48
1:U:171:ILE:HD13	1:U:341:PHE:HZ	1.78	0.48
3:T:90:THR:HG21	3:T:106:ALA:HB3	1.96	0.48
2:S:67:VAL:HB	2:S:108:TYR:HD1	1.78	0.48
3:T:391:TRP:HA	3:T:426:HIS:CE1	2.49	0.48
4:K:188:GLU:CB	4:K:216:TYR:OH	2.62	0.48
1:U:88:ASP:OD2	1:U:154:CYS:HB2	2.14	0.48
2:S:271:ASP:HA	3:T:64:SER:HB2	1.96	0.48
1:U:6:VAL:O	1:U:10:VAL:HG13	2.13	0.48
1:U:51:LEU:HG	1:U:57:PRO:HG3	1.96	0.48
1:U:320:ILE:HG22	1:U:338:TYR:HB3	1.94	0.48
4:K:191:TRP:NE1	4:K:218:PRO:HG2	2.28	0.48
1:U:254:ILE:HB	1:U:255:PRO:HD3	1.95	0.47
1:U:300:TYR:C	1:U:303:PRO:HD2	2.39	0.47
3:T:160:LEU:HB3	3:T:223:ARG:HH21	1.79	0.47
5:A:231:VAL:HB	5:A:329:LYS:HB3	1.95	0.47
3:T:155:ALA:HA	3:T:168:HIS:CE1	2.49	0.47
4:K:58:ASN:OD1	4:K:164:HIS:NE2	2.28	0.47
1:U:31:ARG:HH21	1:U:33:GLU:CD	2.22	0.47
2:S:110:ARG:HB2	2:S:110:ARG:NH1	2.28	0.47
4:K:89:ASP:C	4:K:91:ALA:H	2.23	0.47
5:A:361:LEU:O	5:A:369:VAL:HG22	2.14	0.47
3:T:158:LYS:HE2	3:T:168:HIS:HE1	1.78	0.47
3:T:82:LEU:HD11	3:T:130:LEU:HD22	1.95	0.47
3:T:213:THR:HG21	3:T:244:VAL:HG22	1.95	0.47
5:A:192:THR:HG21	5:A:305:SER:HB3	1.96	0.47
1:U:71:TYR:HE1	4:K:371:ILE:HG12	1.78	0.47
1:U:99:ILE:HG13	1:U:140:VAL:HG21	1.97	0.47
2:S:301:PRO:HB2	4:K:307:VAL:HG13	1.95	0.47
3:T:125:LYS:HE3	3:T:125:LYS:HB3	1.70	0.47
5:A:44:LEU:O	5:A:369:VAL:HG12	2.15	0.47
5:A:46:GLN:HG2	5:A:47:ARG:N	2.26	0.47

*Continued on next page...*

*Continued from previous page...*

Atom-1	Atom-2	Interatomic distance (Å)	Clash overlap (Å)
1:U:356:PHE:HB2	5:A:393:TRP:CZ2	2.50	0.47
2:S:234:LEU:HB2	2:S:327:TYR:HA	1.95	0.47
5:A:350:LEU:C	5:A:350:LEU:HD12	2.39	0.47
5:A:478:LEU:N	5:A:479:PRO:HD3	2.30	0.47
3:T:155:ALA:O	3:T:384:LEU:HD21	2.15	0.46
5:A:498:LEU:HD22	5:A:620:TRP:CZ3	2.51	0.46
2:S:308:GLU:HA	2:S:311:LEU:HD12	1.97	0.46
4:K:60:ARG:HA	4:K:245:LEU:O	2.16	0.46
1:U:216:LYS:HG3	1:U:219:SER:HB2	1.98	0.46
2:S:250:ALA:HB2	2:S:382:MET:HG3	1.96	0.46
1:U:304:LEU:HB2	1:U:315:PHE:CE1	2.51	0.46
2:S:392:GLN:O	2:S:396:LEU:HG	2.16	0.46
3:T:171:LEU:O	3:T:172:ARG:NH1	2.43	0.46
2:S:173:ILE:HG13	2:S:175:HIS:HD2	1.80	0.46
4:K:55:PHE:O	5:A:350:LEU:CD2	2.63	0.46
5:A:276:ASP:HB2	5:A:367:ARG:HE	1.81	0.46
2:S:246:ASP:O	2:S:382:MET:CG	2.56	0.46
3:T:115:TRP:CZ2	3:T:159:PRO:HD3	2.51	0.46
4:K:169:PHE:HE1	4:K:171:LYS:HG2	1.81	0.46
5:A:194:ALA:HB2	5:A:207:MET:SD	2.56	0.46
5:A:534:LEU:HD12	5:A:534:LEU:O	2.16	0.46
1:U:208:LEU:HD13	1:U:215:VAL:HG22	1.97	0.46
1:U:202:PRO:HB3	1:U:315:PHE:CD2	2.51	0.46
2:S:173:ILE:HG13	2:S:175:HIS:CD2	2.51	0.46
1:U:277:PHE:HE1	3:T:529:ILE:HA	1.80	0.45
2:S:165:LYS:HA	2:S:420:THR:HB	1.97	0.45
4:K:253:VAL:HG22	4:K:274:VAL:HG11	1.98	0.45
1:U:180:PHE:O	1:U:184:ILE:HG12	2.16	0.45
2:S:67:VAL:HB	2:S:108:TYR:CD1	2.52	0.45
2:S:409:LEU:C	2:S:410:LEU:HD22	2.41	0.45
5:A:169:HIS:ND1	5:A:340:GLU:OE2	2.49	0.45
5:A:525:ALA:O	5:A:529:VAL:HB	2.17	0.45
4:K:75:LEU:HD11	4:K:260:ILE:HD11	1.98	0.45
3:T:356:ARG:HG3	3:T:370:THR:HB	1.98	0.45
4:K:276:PRO:HD2	4:K:279:LEU:HD12	1.98	0.45
5:A:495:TRP:NE1	5:A:617:VAL:HG13	2.32	0.45
5:A:575:ALA:O	5:A:579:GLN:HG2	2.16	0.45
4:K:166:GLY:HA3	4:K:169:PHE:CZ	2.52	0.45
2:S:280:LEU:HD22	2:S:303:VAL:HG22	1.99	0.45
5:A:303:HIS:O	5:A:306:HIS:CE1	2.70	0.45
5:A:431:LEU:HA	5:A:613:LEU:HD21	1.98	0.45

*Continued on next page...*

*Continued from previous page...*

Atom-1	Atom-2	Interatomic distance (Å)	Clash overlap (Å)
3:T:35:VAL:HG12	3:T:47:THR:HB	1.98	0.45
3:T:49:GLN:NE2	3:T:495:LEU:HD21	2.29	0.45
3:T:294:LEU:HD23	3:T:336:LEU:HD11	1.98	0.45
5:A:29:TYR:OH	5:A:526:THR:O	2.28	0.45
1:U:128:ARG:NH2	1:U:347:HIS:HB3	2.32	0.45
4:K:73:LYS:HZ3	4:K:116:ASP:C	2.24	0.45
2:S:296:ASP:OD1	2:S:296:ASP:N	2.48	0.44
3:T:114:VAL:HG12	3:T:127:TRP:CZ3	2.51	0.44
3:T:259:SER:O	3:T:263:MET:HG2	2.17	0.44
3:T:391:TRP:CD2	3:T:391:TRP:C	2.95	0.44
3:T:405:LYS:HE2	3:T:438:SER:HB3	1.98	0.44
4:K:51:CYS:HB2	4:K:65:THR:OG1	2.17	0.44
2:S:94:LEU:HD21	2:S:204:LEU:HD13	1.98	0.44
4:K:169:PHE:CD1	4:K:169:PHE:C	2.95	0.44
5:A:97:ARG:HH21	5:A:103:VAL:HB	1.82	0.44
2:S:452:ILE:HG13	2:S:452:ILE:O	2.17	0.44
2:S:457:ILE:O	2:S:457:ILE:HG13	2.18	0.44
3:T:417:GLN:CD	3:T:424:GLN:HE21	2.24	0.44
4:K:109:GLU:OE1	4:K:109:GLU:N	2.45	0.44
4:K:181:ILE:HG13	4:K:214:ARG:CD	2.47	0.44
5:A:332:LEU:HA	5:A:335:VAL:HG12	2.00	0.44
1:U:321:ALA:HB1	1:U:402:ILE:HG13	1.98	0.44
4:K:149:LEU:O	4:K:195:ARG:NH1	2.45	0.44
4:K:198:GLU:HB3	4:K:291:PHE:CZ	2.53	0.44
4:K:350:PRO:HB2	4:K:353:GLN:HB3	1.98	0.44
5:A:258:PHE:HE2	5:A:345:LYS:HD2	1.82	0.44
2:S:410:LEU:O	2:S:411:SER:OG	2.31	0.44
4:K:201:PHE:O	4:K:222:ALA:HA	2.18	0.44
1:U:352:LEU:HD13	1:U:355:ILE:HD13	1.99	0.44
2:S:300:LEU:O	2:S:303:VAL:HG12	2.18	0.44
4:K:204:ASP:HA	4:K:225:SER:HB3	2.00	0.44
2:S:62:MET:HE3	2:S:62:MET:HB3	1.91	0.44
2:S:70:THR:HG21	2:S:119:LEU:HD13	2.00	0.44
3:T:458:PRO:HD2	4:K:124:TYR:CE1	2.52	0.44
5:A:15:ARG:HD2	5:A:15:ARG:HA	1.69	0.44
5:A:71:ARG:O	5:A:75:ARG:HG2	2.18	0.44
5:A:225:LEU:HD22	5:A:339:LEU:HD11	1.98	0.44
1:U:347:HIS:CE1	1:U:412:ARG:HE	2.35	0.44
1:U:107:PHE:HB2	1:U:133:MET:HE1	2.00	0.44
1:U:338:TYR:CE1	1:U:402:ILE:HD11	2.53	0.44
2:S:77:ASP:OD2	2:S:176:ARG:HG2	2.16	0.44

*Continued on next page...*

*Continued from previous page...*

Atom-1	Atom-2	Interatomic distance (Å)	Clash overlap (Å)
3:T:30:LEU:HD22	3:T:194:PRO:HG2	2.00	0.44
3:T:84:GLU:O	3:T:114:VAL:HG23	2.18	0.44
3:T:215:TYR:HB3	3:T:245:VAL:HB	2.00	0.44
4:K:188:GLU:HG2	4:K:216:TYR:HH	1.78	0.44
1:U:51:LEU:HD21	1:U:248:LEU:HD11	1.98	0.43
3:T:84:GLU:HA	3:T:222:ILE:O	2.18	0.43
3:T:107:PRO:HD3	3:T:509:TYR:CZ	2.53	0.43
4:K:59:TYR:HB3	4:K:243:VAL:HG23	1.96	0.43
5:A:199:TYR:OH	5:A:217:GLY:O	2.23	0.43
5:A:612:LEU:HD23	5:A:612:LEU:HA	1.87	0.43
1:U:79:TYR:O	1:U:83:VAL:HG23	2.18	0.43
1:U:175:ILE:HA	1:U:206:TYR:CE2	2.53	0.43
2:S:160:SER:O	2:S:408:CYS:HA	2.18	0.43
1:U:171:ILE:HG12	1:U:316:MET:SD	2.58	0.43
4:K:66:LEU:HD21	4:K:86:LEU:HD11	1.99	0.43
5:A:60:VAL:HG11	5:A:341:GLY:HA2	2.00	0.43
5:A:452:ALA:HB3	5:A:463:ALA:HB1	1.99	0.43
1:U:149:TYR:OH	1:U:366:SER:OG	2.23	0.43
2:S:131:LEU:C	2:S:133:GLU:H	2.26	0.43
2:S:161:TYR:OH	2:S:411:SER:HB3	2.17	0.43
2:S:517:GLN:O	2:S:521:ILE:HG12	2.18	0.43
5:A:40:VAL:HG11	5:A:287:LEU:HA	2.00	0.43
5:A:349:LEU:HD23	5:A:349:LEU:HA	1.79	0.43
7:U:501:8JY:O37	7:U:501:8JY:O11	2.37	0.43
2:S:126:GLU:OE2	2:S:153:LEU:HD13	2.18	0.43
2:S:303:VAL:HG13	2:S:304:ILE:HG23	2.00	0.43
3:T:213:THR:HG21	3:T:244:VAL:CG2	2.47	0.43
4:K:276:PRO:HD2	4:K:279:LEU:HB2	2.00	0.43
4:K:50:VAL:HA	4:K:85:MET:HB2	1.99	0.43
5:A:235:LEU:HD21	5:A:319:LEU:HD23	2.01	0.43
4:K:50:VAL:HG21	4:K:131:PHE:CE1	2.53	0.43
3:T:227:ARG:HG2	3:T:235:SER:HB3	1.99	0.43
3:T:372:LEU:HD23	3:T:440:THR:O	2.19	0.43
1:U:277:PHE:CE1	3:T:529:ILE:HA	2.53	0.43
1:U:303:PRO:HA	1:U:306:ILE:HG12	2.00	0.43
3:T:135:SER:HB3	3:T:142:LEU:HB2	2.01	0.43
3:T:343:GLU:OE1	3:T:343:GLU:N	2.49	0.43
1:U:194:LEU:HD22	1:U:258:TYR:HD1	1.84	0.43
3:T:90:THR:CG2	3:T:106:ALA:HB3	2.48	0.43
3:T:200:GLY:HA2	3:T:271:PRO:HA	2.01	0.43
2:S:182:ILE:HD13	2:S:182:ILE:HA	1.87	0.42

*Continued on next page...*

*Continued from previous page...*

Atom-1	Atom-2	Interatomic distance (Å)	Clash overlap (Å)
3:T:86:HIS:CE1	3:T:160:LEU:HD12	2.54	0.42
3:T:396:TYR:HB3	3:T:398:HIS:CE1	2.54	0.42
4:K:161:MET:HE2	4:K:161:MET:HB3	1.77	0.42
5:A:531:THR:HG22	5:A:547:LEU:HB3	2.00	0.42
2:S:300:LEU:N	2:S:301:PRO:HD2	2.34	0.42
3:T:107:PRO:HB2	3:T:468:PRO:HG2	2.00	0.42
3:T:391:TRP:CH2	3:T:422:ARG:HG2	2.55	0.42
4:K:377:LEU:O	4:K:381:VAL:HG23	2.19	0.42
2:S:204:LEU:O	2:S:206:ASP:N	2.52	0.42
3:T:434:LEU:HA	3:T:435:PRO:HD3	1.87	0.42
4:K:54:ARG:HG3	4:K:173:GLN:HG2	2.01	0.42
4:K:104:SER:OG	4:K:246:MET:HE1	2.14	0.42
2:S:351:PHE:CE2	2:S:359:ILE:HD13	2.55	0.42
3:T:127:TRP:CZ2	3:T:145:ILE:HG21	2.55	0.42
4:K:52:THR:HG22	4:K:172:PHE:CE2	2.54	0.42
4:K:256:PHE:CB	4:K:274:VAL:HG21	2.50	0.42
2:S:302:HIS:CE1	4:K:307:VAL:HG22	2.55	0.42
2:S:430:ARG:HA	2:S:430:ARG:HD3	1.81	0.42
3:T:85:LEU:HD11	3:T:134:LEU:HD11	2.00	0.42
3:T:441:LYS:HZ3	3:T:443:SER:HB2	1.85	0.42
4:K:170:LEU:HB3	4:K:178:ILE:CG2	2.50	0.42
4:K:231:ASP:O	4:K:232:SER:C	2.62	0.42
4:K:236:GLN:N	4:K:244:HIS:CD2	2.81	0.42
1:U:31:ARG:HB2	1:U:34:VAL:HG22	2.02	0.42
2:S:61:LEU:HD23	2:S:428:TRP:CE3	2.54	0.42
2:S:238:PRO:HG3	2:S:276:TYR:CD1	2.54	0.42
2:S:247:ILE:HG12	2:S:272:SER:HB2	2.01	0.42
3:T:90:THR:HA	3:T:216:HIS:O	2.19	0.42
3:T:107:PRO:HG2	3:T:111:GLU:HB2	2.01	0.42
3:T:327:ASN:HB2	3:T:330:ARG:HB2	2.01	0.42
1:U:303:PRO:HB2	3:T:547:LEU:HD13	2.00	0.42
2:S:74:VAL:O	2:S:74:VAL:HG13	2.20	0.42
4:K:144:PRO:HD2	4:K:147:LYS:HD3	2.01	0.42
5:A:540:PRO:C	5:A:542:THR:H	2.27	0.42
1:U:285:PHE:CD2	2:S:521:ILE:HD12	2.55	0.42
5:A:134:ARG:NH2	5:A:215:ARG:O	2.34	0.42
4:K:152:ASP:OD1	4:K:152:ASP:N	2.53	0.42
1:U:119:TYR:CZ	1:U:416:LEU:HD22	2.55	0.42
1:U:372:LEU:HD23	1:U:372:LEU:HA	1.83	0.42
2:S:91:GLU:HA	2:S:101:LYS:HA	2.00	0.42
2:S:435:LEU:HD21	2:S:475:SER:HB3	2.02	0.42

*Continued on next page...*



*Continued from previous page...*

Atom-1	Atom-2	Interatomic distance (Å)	Clash overlap (Å)
3:T:151:VAL:HG13	3:T:427:LEU:HD22	2.02	0.42
5:A:112:LEU:HD22	5:A:590:LEU:HD11	2.02	0.42
5:A:198:ALA:O	5:A:215:ARG:NH2	2.49	0.42
1:U:306:ILE:O	2:S:15:ARG:HD3	2.20	0.41
2:S:244:TYR:HB2	2:S:377:ARG:NH1	2.35	0.41
3:T:30:LEU:O	3:T:276:SER:N	2.40	0.41
3:T:120:VAL:HG12	3:T:122:ASP:H	1.85	0.41
3:T:238:LEU:HD21	3:T:240:GLN:HG3	2.02	0.41
4:K:358:LYS:HG3	4:K:359:PRO:HD2	2.01	0.41
5:A:388:LYS:HD2	5:A:388:LYS:HA	1.59	0.41
1:U:73:PHE:O	1:U:77:ILE:HB	2.20	0.41
1:U:358:LEU:HD23	1:U:358:LEU:HA	1.91	0.41
2:S:205:ALA:HB1	2:S:218:ARG:HG2	2.02	0.41
2:S:523:ILE:N	2:S:524:PRO:HD2	2.35	0.41
3:T:69:PHE:CE1	3:T:238:LEU:HB2	2.55	0.41
3:T:205:LEU:HA	3:T:210:LEU:HD11	2.03	0.41
4:K:188:GLU:CA	4:K:217:SER:OG	2.66	0.41
5:A:478:LEU:HD11	5:A:481:ASN:HB2	2.01	0.41
5:A:532:ALA:HB1	5:A:614:PHE:CZ	2.56	0.41
1:U:325:ILE:HG21	1:U:399:ILE:CD1	2.50	0.41
3:T:198:LYS:HA	3:T:198:LYS:HD3	1.92	0.41
5:A:95:THR:HG21	5:A:164:LEU:HD13	2.01	0.41
5:A:104:TYR:HB2	5:A:130:TYR:CZ	2.55	0.41
5:A:188:ASP:OD1	5:A:188:ASP:N	2.52	0.41
1:U:69:ILE:HD13	1:U:69:ILE:HA	1.94	0.41
1:U:391:THR:O	1:U:395:ASN:ND2	2.29	0.41
4:K:260:ILE:HD13	4:K:300:ILE:CD1	2.50	0.41
2:S:50:GLN:OE1	2:S:50:GLN:N	2.53	0.41
2:S:404:LEU:HD22	2:S:408:CYS:SG	2.60	0.41
2:S:190:ALA:O	2:S:194:SER:N	2.51	0.41
3:T:114:VAL:HG12	3:T:127:TRP:HZ3	1.86	0.41
3:T:230:ARG:HG3	3:T:230:ARG:O	2.20	0.41
4:K:104:SER:HA	4:K:246:MET:CE	2.50	0.41
5:A:87:LEU:HD12	5:A:88:PRO:HD2	2.03	0.41
1:U:40:SER:HB3	1:U:43:ARG:HB2	2.03	0.41
2:S:44:ALA:H	2:S:457:ILE:HG13	1.85	0.41
2:S:181:ILE:HG12	2:S:184:ARG:NH2	2.35	0.41
3:T:58:LEU:HD13	3:T:77:ILE:HD12	2.03	0.41
3:T:223:ARG:HA	3:T:224:PRO:HD3	1.84	0.41
4:K:64:ASN:HB3	4:K:160:TYR:OH	2.21	0.41
4:K:92:CYS:HB2	5:A:137:ARG:HH22	1.85	0.41

*Continued on next page...*



Continued from previous page...

Atom-1	Atom-2	Interatomic distance (Å)	Clash overlap (Å)
5:A:23:PRO:HA	5:A:26:VAL:HG12	2.03	0.41
5:A:60:VAL:HG23	5:A:345:LYS:HE3	2.02	0.41
5:A:295:LEU:HD23	5:A:523:LEU:HD11	2.02	0.41
2:S:255:VAL:HG12	2:S:259:LEU:HG	2.03	0.41
2:S:364:VAL:HG21	2:S:378:VAL:HG22	2.02	0.41
4:K:180:ASN:OD1	4:K:180:ASN:N	2.54	0.41
4:K:212:TYR:HD1	4:K:287:ARG:HD3	1.85	0.41
5:A:522:PHE:O	5:A:526:THR:HG23	2.21	0.41
2:S:69:PHE:O	2:S:111:ALA:N	2.54	0.40
2:S:37:LYS:HD3	2:S:37:LYS:HA	1.84	0.40
2:S:513:PHE:CD1	2:S:514:PRO:HD2	2.57	0.40
3:T:103:PHE:HE1	3:T:308:ILE:HG21	1.86	0.40
5:A:145:VAL:HG22	5:A:181:VAL:HB	2.04	0.40
5:A:239:VAL:HG23	5:A:239:VAL:O	2.21	0.40
1:U:4:PRO:HG2	1:U:138:LEU:HD22	2.02	0.40
3:T:151:VAL:HG11	3:T:427:LEU:HD13	2.03	0.40
3:T:256:LYS:HB2	3:T:262:ARG:NH1	2.37	0.40
4:K:181:ILE:HG13	4:K:214:ARG:HD3	2.03	0.40
4:K:256:PHE:CB	4:K:274:VAL:CG2	2.99	0.40
1:U:44:VAL:HG22	1:U:65:GLU:HG3	2.03	0.40
2:S:79:GLN:HG2	2:S:82:LEU:HD11	2.02	0.40
2:S:341:LYS:HG2	2:S:342:ASP:OD1	2.21	0.40
2:S:535:LEU:HD22	3:T:544:TYR:HE2	1.87	0.40
3:T:297:HIS:HB3	3:T:298:PRO:HD3	2.03	0.40
3:T:310:GLY:HA2	3:T:477:SER:HB2	2.03	0.40
4:K:87:ALA:HB1	4:K:173:GLN:HG2	2.03	0.40
5:A:294:VAL:HG13	5:A:519:SER:HB3	2.02	0.40
3:T:28:ASP:OD1	3:T:67:ARG:NH2	2.54	0.40
5:A:82:LYS:HA	5:A:82:LYS:HD3	1.84	0.40

There are no symmetry-related clashes.

## 5.3 Torsion angles ⓘ

### 5.3.1 Protein backbone ⓘ

In the following table, the Percentiles column shows the percent Ramachandran outliers of the chain as a percentile score with respect to all PDB entries followed by that with respect to all EM entries.

The Analysed column shows the number of residues for which the backbone conformation was analysed, and the total number of residues.

Mol	Chain	Analysed	Favoured	Allowed	Outliers	Percentiles	
1	U	418/420 (100%)	397 (95%)	21 (5%)	0	100	100
2	S	531/533 (100%)	477 (90%)	54 (10%)	0	100	100
3	T	525/527 (100%)	473 (90%)	51 (10%)	1 (0%)	44	74
4	K	326/395 (82%)	302 (93%)	24 (7%)	0	100	100
5	A	584/621 (94%)	536 (92%)	48 (8%)	0	100	100
All	All	2384/2496 (96%)	2185 (92%)	198 (8%)	1 (0%)	100	100

All (1) Ramachandran outliers are listed below:

Mol	Chain	Res	Type
3	T	348	PRO

### 5.3.2 Protein sidechains ⓘ

In the following table, the Percentiles column shows the percent sidechain outliers of the chain as a percentile score with respect to all PDB entries followed by that with respect to all EM entries.

The Analysed column shows the number of residues for which the sidechain conformation was analysed, and the total number of residues.

Mol	Chain	Analysed	Rotameric	Outliers	Percentiles	
1	U	370/373 (99%)	370 (100%)	0	100	100
2	S	448/451 (99%)	447 (100%)	1 (0%)	92	96
3	T	480/480 (100%)	480 (100%)	0	100	100
4	K	299/355 (84%)	292 (98%)	7 (2%)	45	70
5	A	476/499 (95%)	476 (100%)	0	100	100
All	All	2073/2158 (96%)	2065 (100%)	8 (0%)	88	94

All (8) residues with a non-rotameric sidechain are listed below:

Mol	Chain	Res	Type
2	S	112	LEU
4	K	45	ASN
4	K	117	VAL
4	K	125	GLU
4	K	161	MET
4	K	213	GLU
4	K	280	CYS

*Continued on next page...*

*Continued from previous page...*

Mol	Chain	Res	Type
4	K	281	VAL

Sometimes sidechains can be flipped to improve hydrogen bonding and reduce clashes. All (17) such sidechains are listed below:

Mol	Chain	Res	Type
2	S	207	HIS
3	T	49	GLN
3	T	149	ASN
3	T	289	GLN
3	T	353	HIS
3	T	398	HIS
3	T	424	GLN
3	T	503	ASN
3	T	545	ASN
4	K	207	GLN
4	K	267	ASN
4	K	348	GLN
5	A	245	GLN
5	A	269	GLN
5	A	592	HIS
5	A	593	HIS
5	A	616	ASN

### 5.3.3 RNA [i](#)

There are no RNA molecules in this entry.

## 5.4 Non-standard residues in protein, DNA, RNA chains [i](#)

There are no non-standard protein/DNA/RNA residues in this entry.

## 5.5 Carbohydrates [i](#)

3 monosaccharides are modelled in this entry.

In the following table, the Counts columns list the number of bonds (or angles) for which Mogul statistics could be retrieved, the number of bonds (or angles) that are observed in the model and the number of bonds (or angles) that are defined in the Chemical Component Dictionary. The Link column lists molecule types, if any, to which the group is linked. The Z score for a bond length (or angle) is the number of standard deviations the observed value is removed from the

expected value. A bond length (or angle) with  $|Z| > 2$  is considered an outlier worth inspection. RMSZ is the root-mean-square of all Z scores of the bond lengths (or angles).

Mol	Type	Chain	Res	Link	Bond lengths			Bond angles		
					Counts	RMSZ	$\# Z  > 2$	Counts	RMSZ	$\# Z  > 2$
6	NAG	N	1	6,5	14,14,15	0.34	0	17,19,21	0.38	0
6	NAG	N	2	6	14,14,15	0.31	0	17,19,21	0.44	0
6	BMA	N	3	6	11,11,12	0.69	0	15,15,17	0.90	0

In the following table, the Chirals column lists the number of chiral outliers, the number of chiral centers analysed, the number of these observed in the model and the number defined in the Chemical Component Dictionary. Similar counts are reported in the Torsion and Rings columns. '-' means no outliers of that kind were identified.

Mol	Type	Chain	Res	Link	Chirals	Torsions	Rings
6	NAG	N	1	6,5	-	0/6/23/26	0/1/1/1
6	NAG	N	2	6	-	2/6/23/26	0/1/1/1
6	BMA	N	3	6	-	2/2/19/22	0/1/1/1

There are no bond length outliers.

There are no bond angle outliers.

There are no chirality outliers.

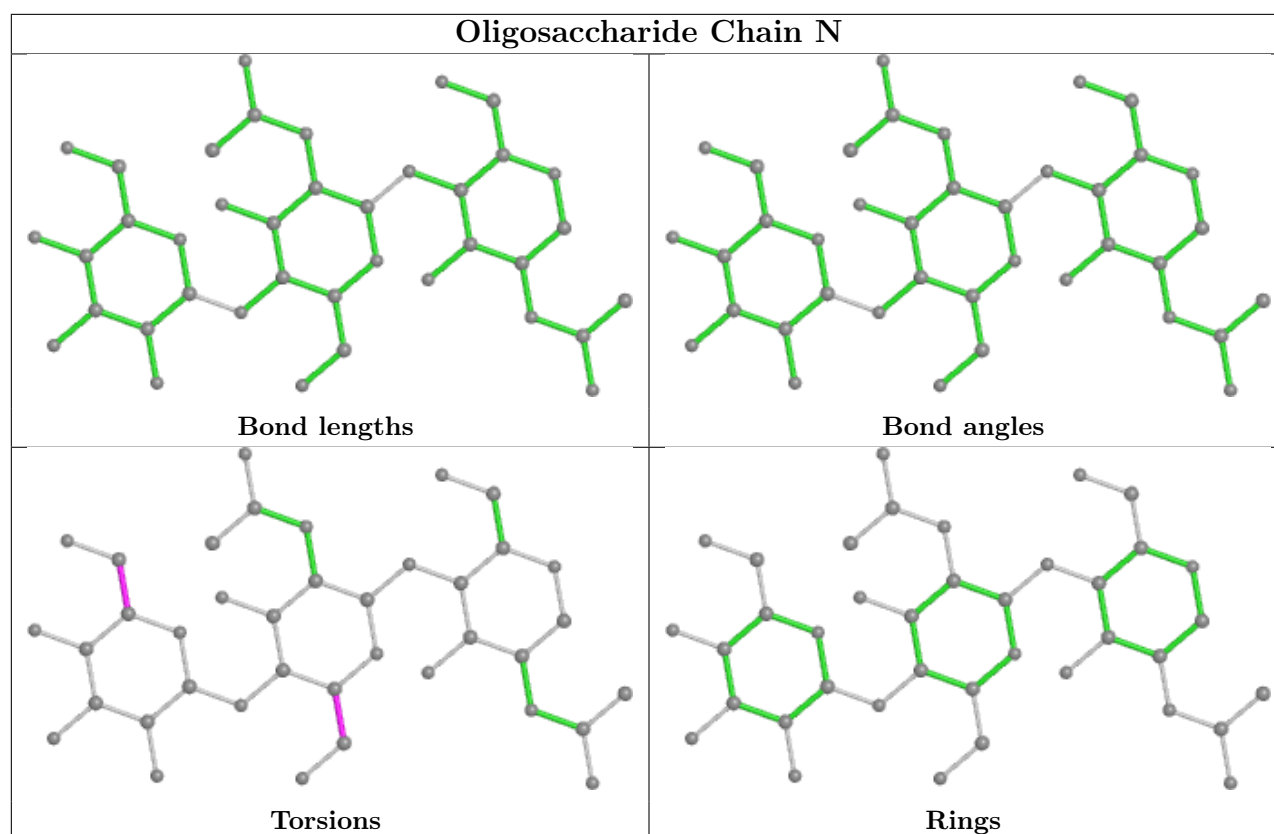
All (4) torsion outliers are listed below:

Mol	Chain	Res	Type	Atoms
6	N	2	NAG	C4-C5-C6-O6
6	N	3	BMA	O5-C5-C6-O6
6	N	2	NAG	O5-C5-C6-O6
6	N	3	BMA	C4-C5-C6-O6

There are no ring outliers.

No monomer is involved in short contacts.

The following is a two-dimensional graphical depiction of Mogul quality analysis of bond lengths, bond angles, torsion angles, and ring geometry for oligosaccharide.



## 5.6 Ligand geometry [i](#)

Of 4 ligands modelled in this entry, 1 is monoatomic - leaving 3 for Mogul analysis.

In the following table, the Counts columns list the number of bonds (or angles) for which Mogul statistics could be retrieved, the number of bonds (or angles) that are observed in the model and the number of bonds (or angles) that are defined in the Chemical Component Dictionary. The Link column lists molecule types, if any, to which the group is linked. The Z score for a bond length (or angle) is the number of standard deviations the observed value is removed from the expected value. A bond length (or angle) with  $|Z| > 2$  is considered an outlier worth inspection. RMSZ is the root-mean-square of all Z scores of the bond lengths (or angles).

Mol	Type	Chain	Res	Link	Bond lengths			Bond angles		
					Counts	RMSZ	$\# Z  > 2$	Counts	RMSZ	$\# Z  > 2$
8	NAG	T	601	3	14,14,15	0.51	0	17,19,21	1.01	2 (11%)
8	NAG	S	601	2	14,14,15	0.18	0	17,19,21	0.42	0
7	8JY	U	501	-	42,42,42	2.47	10 (23%)	53,54,54	1.80	7 (13%)

In the following table, the Chirals column lists the number of chiral outliers, the number of chiral centers analysed, the number of these observed in the model and the number defined in the Chemical Component Dictionary. Similar counts are reported in the Torsion and Rings columns. '-' means no outliers of that kind were identified.

Mol	Type	Chain	Res	Link	Chirals	Torsions	Rings
8	NAG	T	601	3	-	3/6/23/26	0/1/1/1
8	NAG	S	601	2	-	2/6/23/26	0/1/1/1
7	8JY	U	501	-	-	22/38/38/38	0/1/1/1

All (10) bond length outliers are listed below:

Mol	Chain	Res	Type	Atoms	Z	Observed(Å)	Ideal(Å)
7	U	501	8JY	P13-O07	10.77	1.82	1.60
7	U	501	8JY	C01-C06	4.92	1.47	1.39
7	U	501	8JY	P13-O14	3.87	1.75	1.59
7	U	501	8JY	C17-C18	3.67	1.62	1.50
7	U	501	8JY	C20-C18	3.65	1.61	1.50
7	U	501	8JY	O07-C06	-3.07	1.35	1.40
7	U	501	8JY	C06-C05	2.41	1.44	1.39
7	U	501	8JY	C36-C35	2.28	1.57	1.50
7	U	501	8JY	C30-C29	2.17	1.60	1.51
7	U	501	8JY	C04-C05	2.04	1.42	1.39

All (9) bond angle outliers are listed below:

Mol	Chain	Res	Type	Atoms	Z	Observed(°)	Ideal(°)
7	U	501	8JY	O19-C21-C22	6.86	126.28	111.50
7	U	501	8JY	O12-C35-C36	5.55	126.70	110.67
7	U	501	8JY	C05-O12-C35	5.45	125.05	116.96
7	U	501	8JY	O19-C21-O27	-3.81	114.49	123.70
7	U	501	8JY	O12-C35-O37	-3.40	116.34	122.84
8	T	601	NAG	C1-O5-C5	2.80	115.99	112.19
7	U	501	8JY	O07-P13-O14	2.36	109.83	102.92
7	U	501	8JY	O12-C05-C04	2.28	121.59	117.62
8	T	601	NAG	C3-C4-C5	2.13	114.03	110.24

There are no chirality outliers.

All (27) torsion outliers are listed below:

Mol	Chain	Res	Type	Atoms
7	U	501	8JY	C22-C21-O19-C18
7	U	501	8JY	C04-C05-O12-C35
7	U	501	8JY	O27-C21-O19-C18
8	S	601	NAG	C4-C5-C6-O6
7	U	501	8JY	C01-C06-O07-P13
7	U	501	8JY	C05-C06-O07-P13

*Continued on next page...*

*Continued from previous page...*

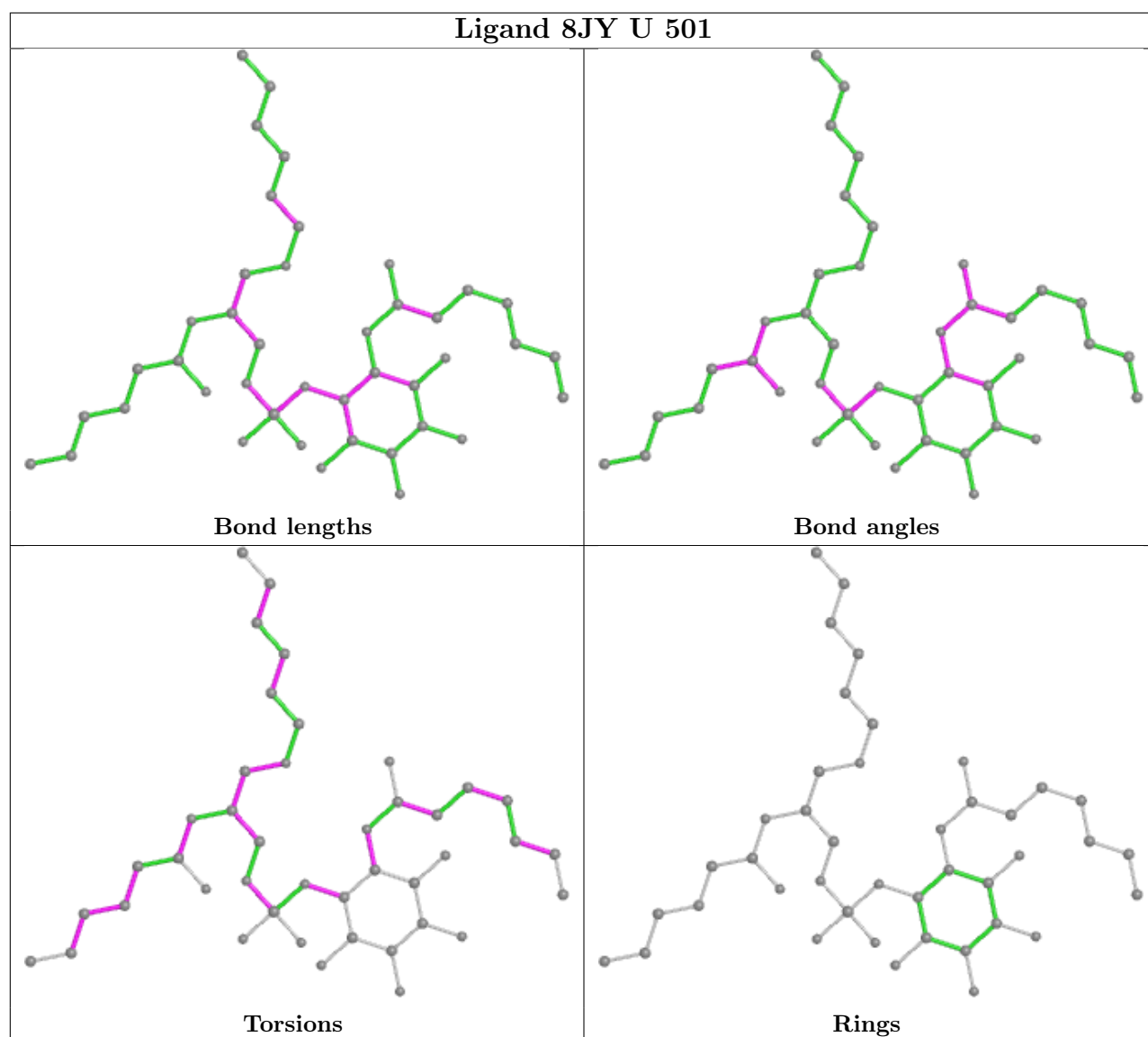
Mol	Chain	Res	Type	Atoms
8	T	601	NAG	O5-C5-C6-O6
7	U	501	8JY	C29-C30-C31-C32
8	S	601	NAG	O5-C5-C6-O6
8	T	601	NAG	C4-C5-C6-O6
7	U	501	8JY	C21-C22-C23-C24
7	U	501	8JY	C17-O14-P13-O07
7	U	501	8JY	C36-C38-C39-C40
7	U	501	8JY	C22-C23-C24-C25
7	U	501	8JY	C31-C32-C33-C34
7	U	501	8JY	C06-C05-O12-C35
7	U	501	8JY	O19-C18-C20-O28
7	U	501	8JY	C17-C18-C20-O28
7	U	501	8JY	O14-C17-C18-C20
7	U	501	8JY	C17-O14-P13-O15
7	U	501	8JY	C17-O14-P13-O16
7	U	501	8JY	O14-C17-C18-O19
8	T	601	NAG	C3-C2-N2-C7
7	U	501	8JY	C18-C20-O28-C29
7	U	501	8JY	C23-C24-C25-C26
7	U	501	8JY	C39-C40-C41-C42
7	U	501	8JY	O12-C35-C36-C38

There are no ring outliers.

1 monomer is involved in 1 short contact:

Mol	Chain	Res	Type	Clashes	Symm-Clashes
7	U	501	8JY	1	0

The following is a two-dimensional graphical depiction of Mogul quality analysis of bond lengths, bond angles, torsion angles, and ring geometry for all instances of the Ligand of Interest. In addition, ligands with molecular weight > 250 and outliers as shown on the validation Tables will also be included. For torsion angles, if less than 5% of the Mogul distribution of torsion angles is within 10 degrees of the torsion angle in question, then that torsion angle is considered an outlier. Any bond that is central to one or more torsion angles identified as an outlier by Mogul will be highlighted in the graph. For rings, the root-mean-square deviation (RMSD) between the ring in question and similar rings identified by Mogul is calculated over all ring torsion angles. If the average RMSD is greater than 60 degrees and the minimal RMSD between the ring in question and any Mogul-identified rings is also greater than 60 degrees, then that ring is considered an outlier. The outliers are highlighted in purple. The color gray indicates Mogul did not find sufficient equivalents in the CSD to analyse the geometry.



## 5.7 Other polymers [i](#)

There are no such residues in this entry.

## 5.8 Polymer linkage issues [i](#)

There are no chain breaks in this entry.



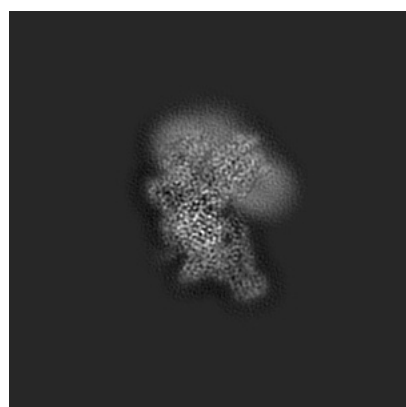
## 6 Map visualisation [i](#)

This section contains visualisations of the EMDB entry EMD-32336. These allow visual inspection of the internal detail of the map and identification of artifacts.

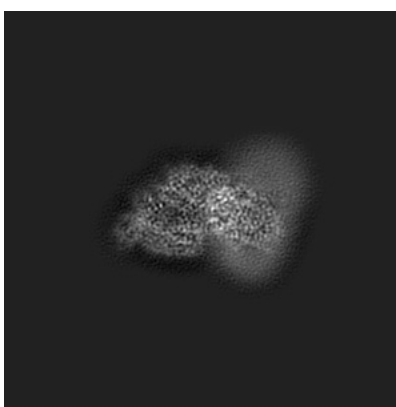
No raw map or half-maps were deposited for this entry and therefore no images, graphs, etc. pertaining to the raw map can be shown.

### 6.1 Orthogonal projections [i](#)

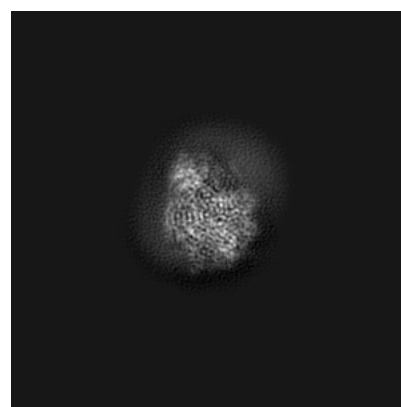
#### 6.1.1 Primary map



X



Y

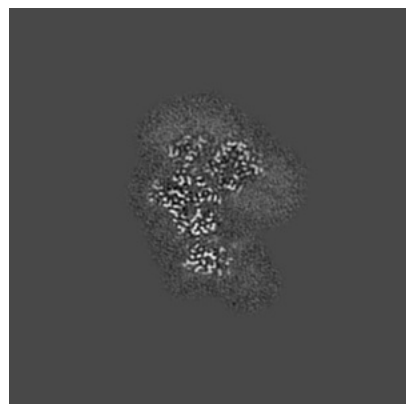


Z

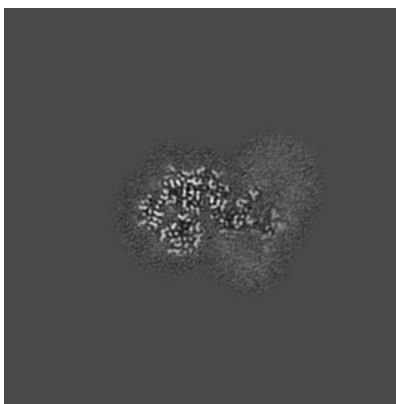
The images above show the map projected in three orthogonal directions.

### 6.2 Central slices [i](#)

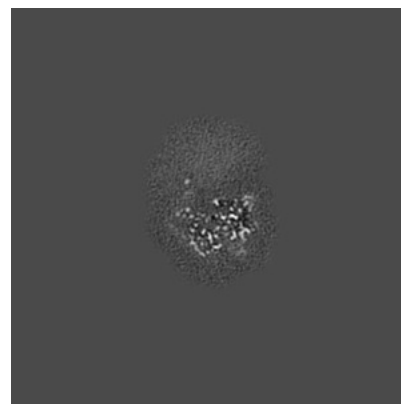
#### 6.2.1 Primary map



X Index: 160



Y Index: 160

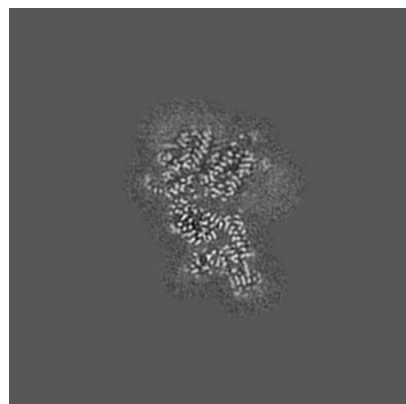


Z Index: 160

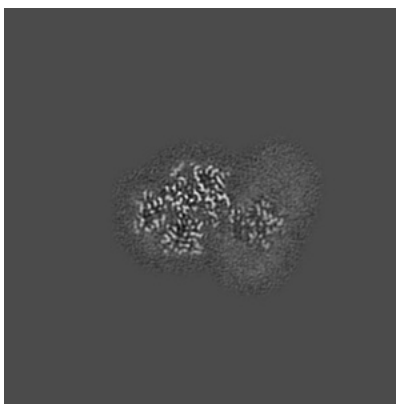
The images above show central slices of the map in three orthogonal directions.

## 6.3 Largest variance slices [i](#)

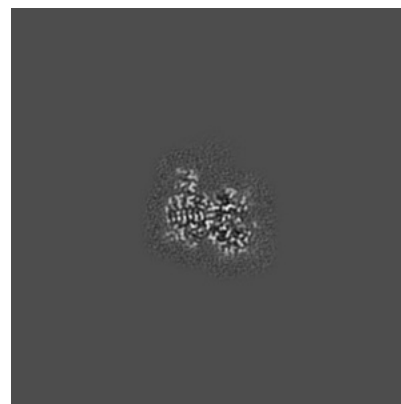
### 6.3.1 Primary map



X Index: 146



Y Index: 149

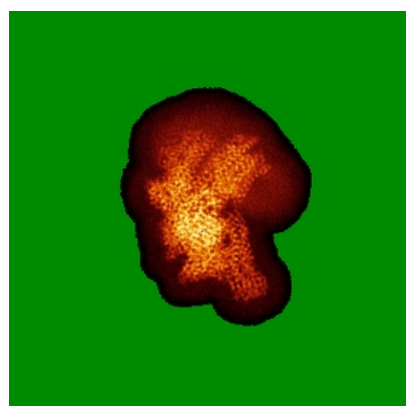


Z Index: 144

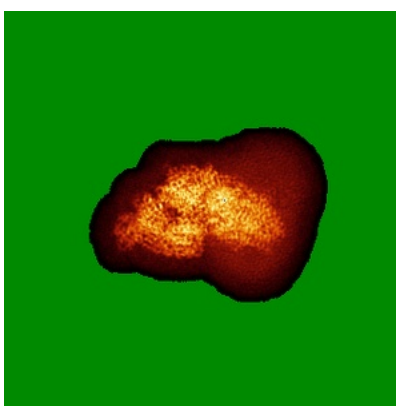
The images above show the largest variance slices of the map in three orthogonal directions.

## 6.4 Orthogonal standard-deviation projections (False-color) [i](#)

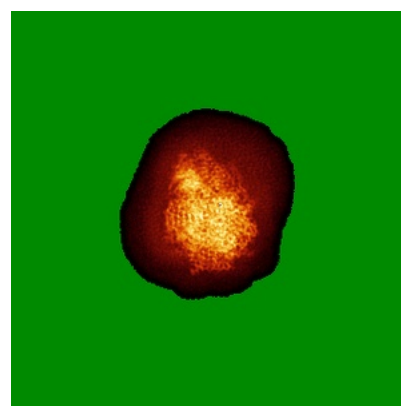
### 6.4.1 Primary map



X



Y



Z

The images above show the map standard deviation projections with false color in three orthogonal directions. Minimum values are shown in green, max in blue, and dark to light orange shades represent small to large values respectively.

## 6.5 Orthogonal surface views [i](#)

### 6.5.1 Primary map



X



Y



Z

The images above show the 3D surface view of the map at the recommended contour level 0.015. These images, in conjunction with the slice images, may facilitate assessment of whether an appropriate contour level has been provided.

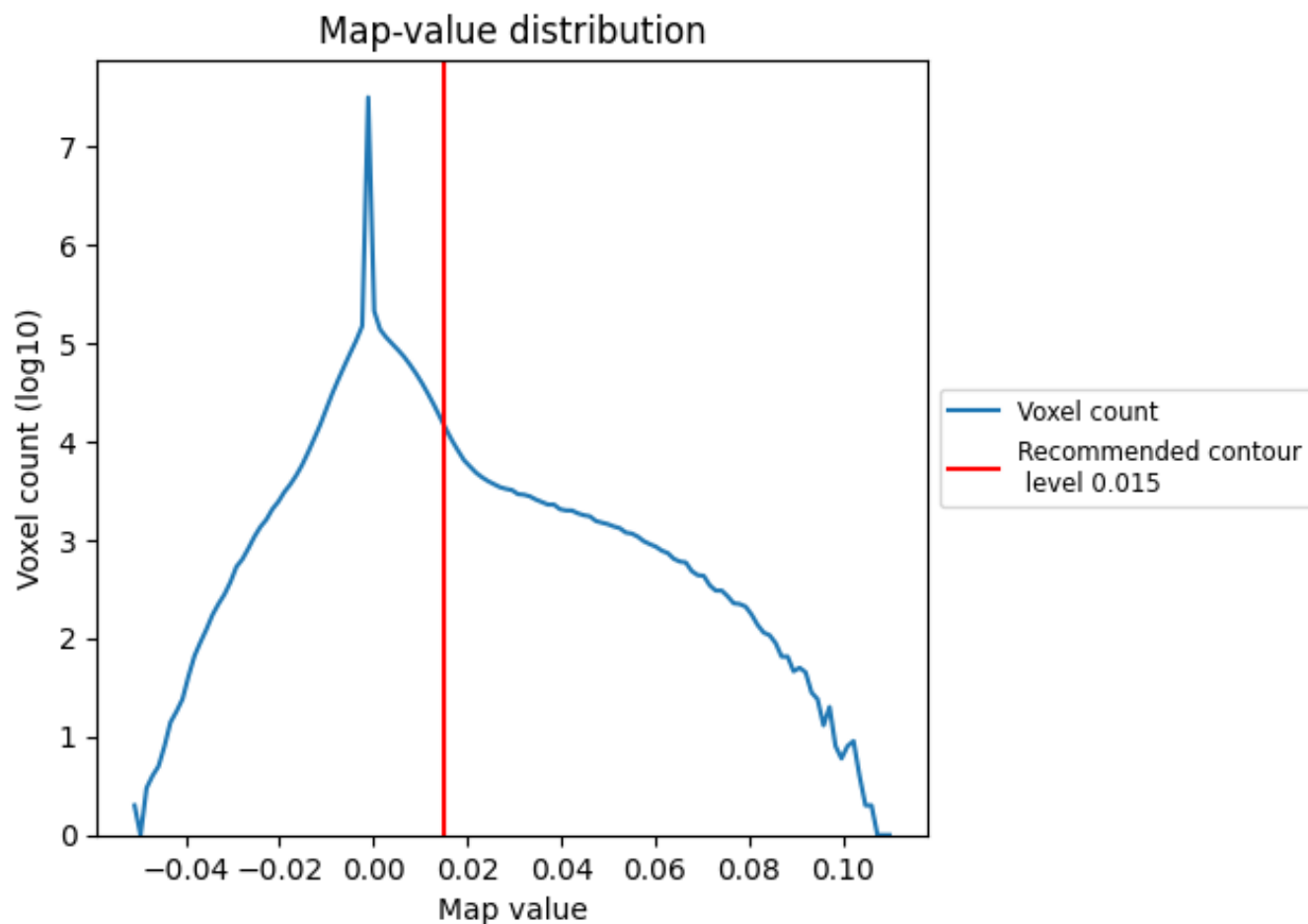
## 6.6 Mask visualisation [i](#)

This section was not generated. No masks/segmentation were deposited.

## 7 Map analysis [i](#)

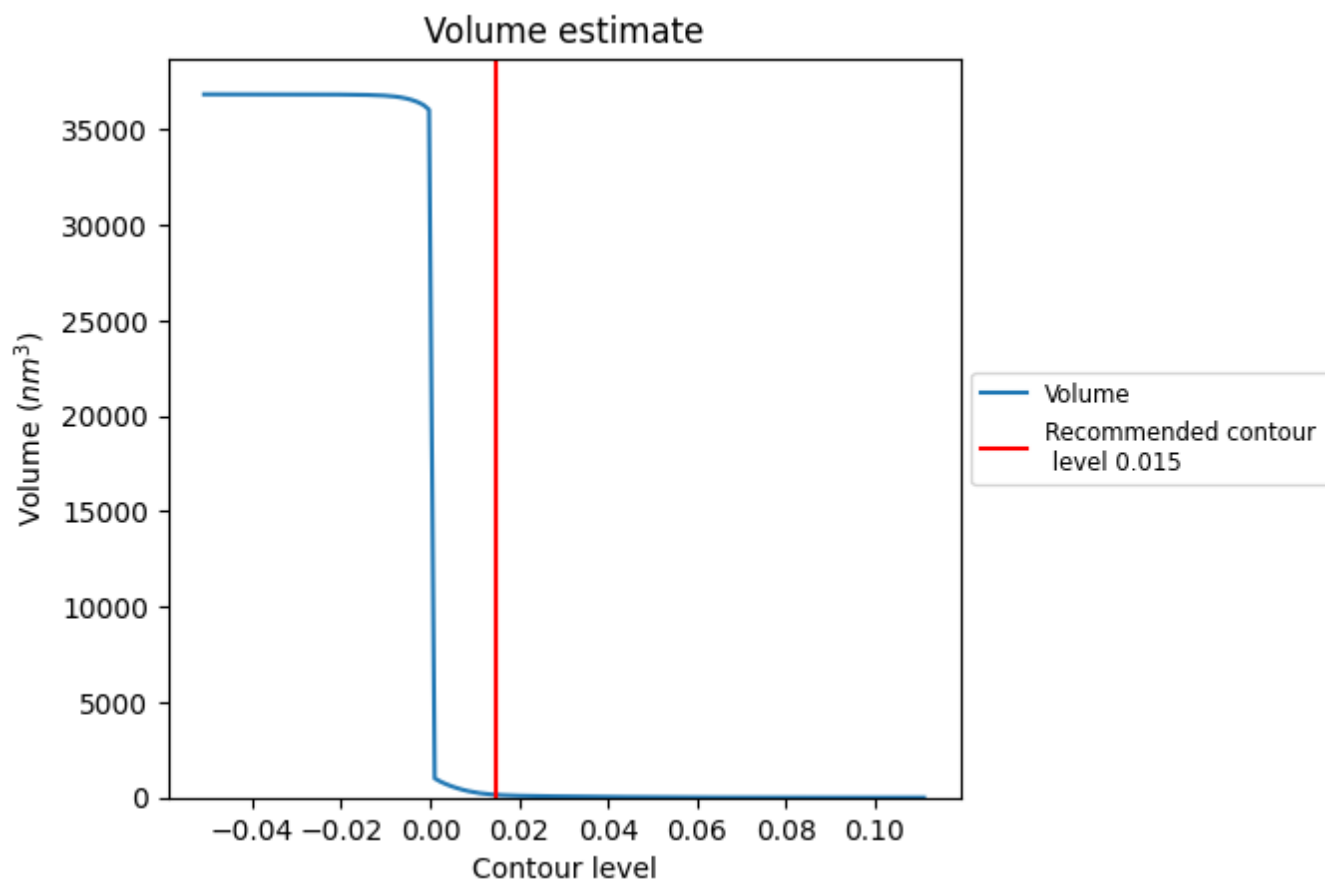
This section contains the results of statistical analysis of the map.

### 7.1 Map-value distribution [i](#)



The map-value distribution is plotted in 128 intervals along the x-axis. The y-axis is logarithmic. A spike in this graph at zero usually indicates that the volume has been masked.

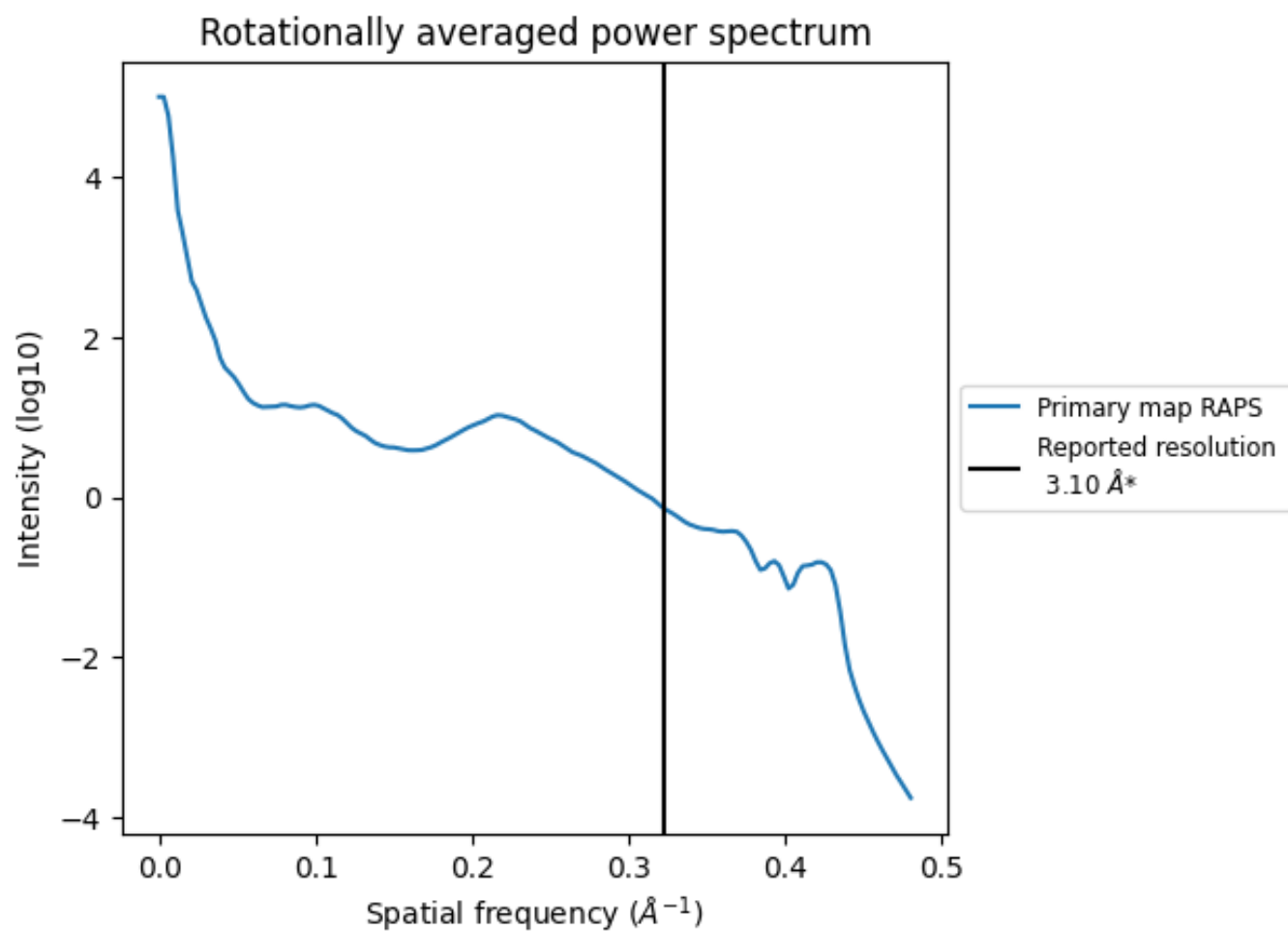
## 7.2 Volume estimate [i](#)



The volume at the recommended contour level is 142 nm<sup>3</sup>; this corresponds to an approximate mass of 128 kDa.

The volume estimate graph shows how the enclosed volume varies with the contour level. The recommended contour level is shown as a vertical line and the intersection between the line and the curve gives the volume of the enclosed surface at the given level.

### 7.3 Rotationally averaged power spectrum ⓘ



\*Reported resolution corresponds to spatial frequency of 0.323 Å<sup>-1</sup>

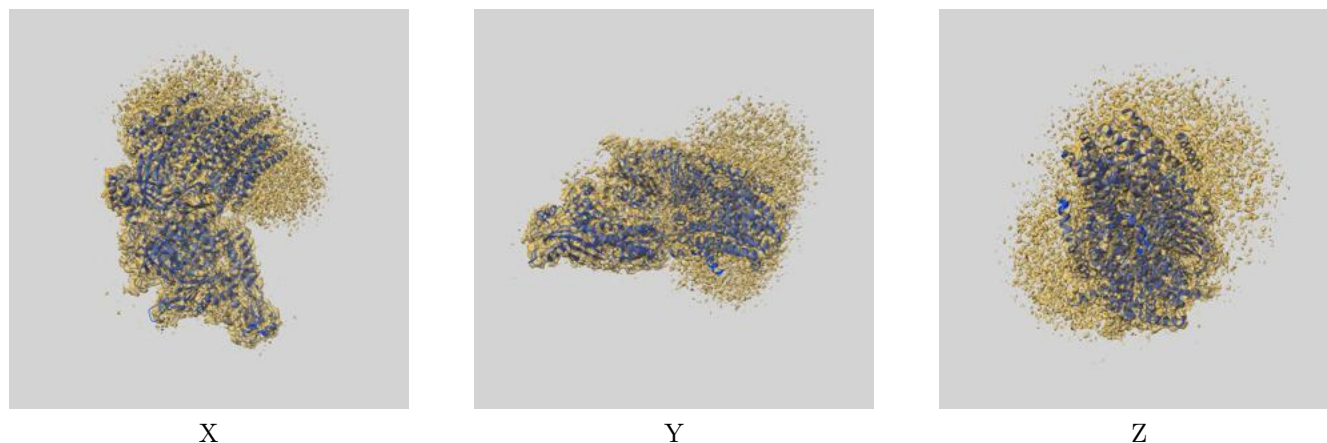
## 8 Fourier-Shell correlation

This section was not generated. No FSC curve or half-maps provided.

## 9 Map-model fit [i](#)

This section contains information regarding the fit between EMDB map EMD-32336 and PDB model 7W72. Per-residue inclusion information can be found in [section 3](#) on [page 6](#).

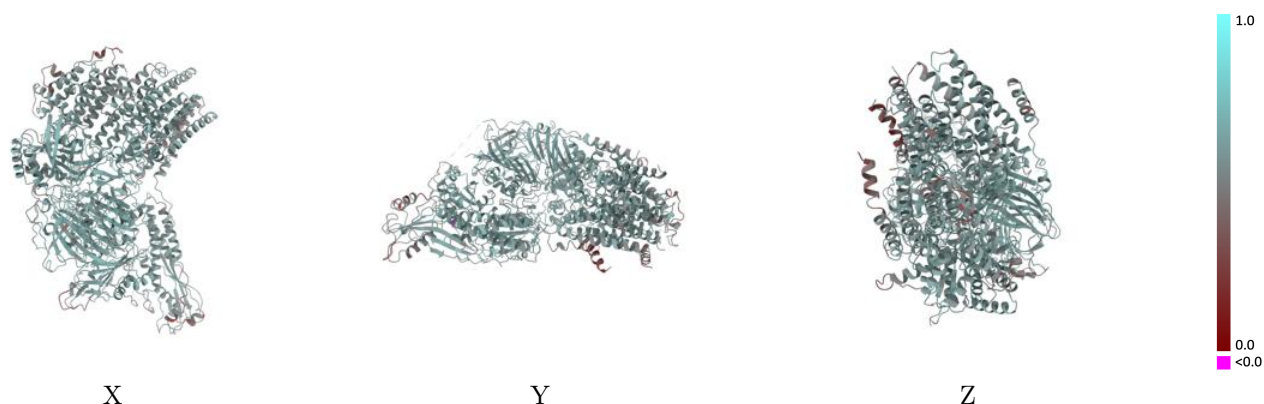
### 9.1 Map-model overlay [i](#)



The images above show the 3D surface view of the map at the recommended contour level 0.015 at 50% transparency in yellow overlaid with a ribbon representation of the model coloured in blue. These images allow for the visual assessment of the quality of fit between the atomic model and the map.

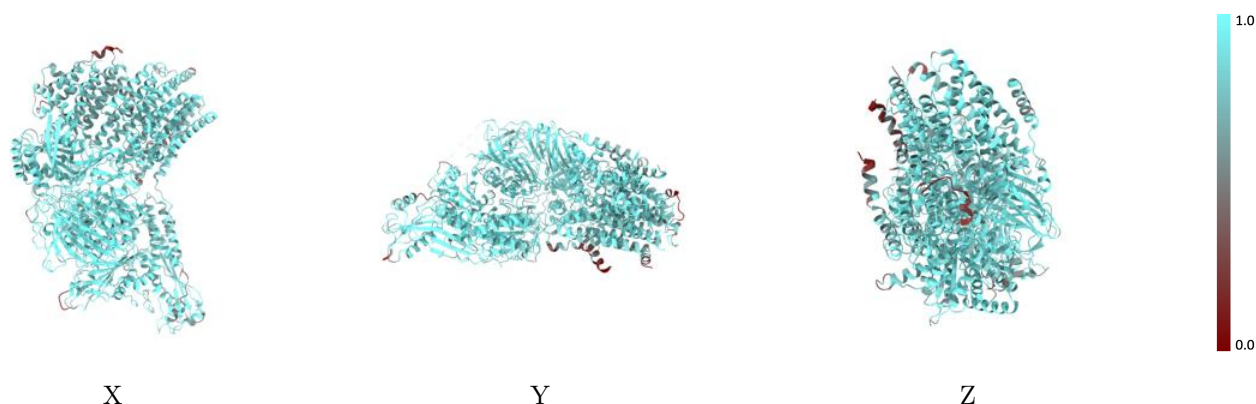


## 9.2 Q-score mapped to coordinate model [i](#)



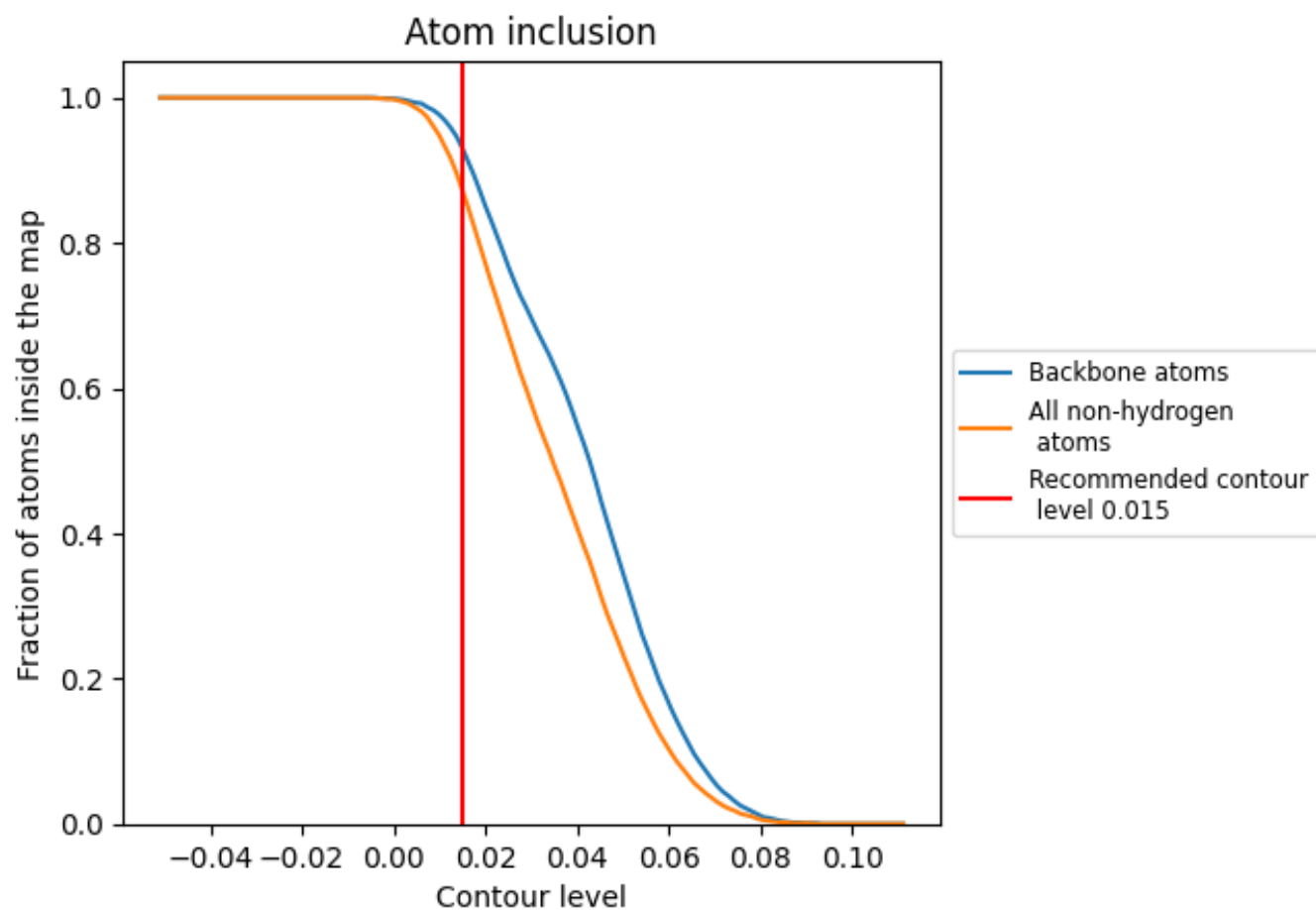
The images above show the model with each residue coloured according to its Q-score. This shows their resolvability in the map with higher Q-score values reflecting better resolvability. Please note: Q-score is calculating the resolvability of atoms, and thus high values are only expected at resolutions at which atoms can be resolved. Low Q-score values may therefore be expected for many entries.

## 9.3 Atom inclusion mapped to coordinate model [i](#)



The images above show the model with each residue coloured according to its atom inclusion. This shows to what extent they are inside the map at the recommended contour level (0.015).

## 9.4 Atom inclusion [i](#)



At the recommended contour level, 93% of all backbone atoms, 87% of all non-hydrogen atoms, are inside the map.

9.5 Map-model fit summary ⓘ

The table lists the average atom inclusion at the recommended contour level (0.015) and Q-score for the entire model and for each chain.

Chain	Atom inclusion	Q-score
All	<div><div></div></div> 0.8730	<div><div></div></div> 0.5680
A	<div><div></div></div> 0.8390	<div><div></div></div> 0.5570
K	<div><div></div></div> 0.8960	<div><div></div></div> 0.5830
N	<div><div></div></div> 0.7950	<div><div></div></div> 0.5110
S	<div><div></div></div> 0.8390	<div><div></div></div> 0.5370
T	<div><div></div></div> 0.9230	<div><div></div></div> 0.5950
U	<div><div></div></div> 0.8800	<div><div></div></div> 0.5730

1.0

0.0

<0.0