



Full wwPDB X-ray Structure Validation Report ⓘ

Oct 28, 2024 – 08:28 pm GMT

PDB ID : 1W4L
Title : Complex of TcAChE with bis-acting galanthamine derivative
Authors : Greenblatt, H.M.; Guillou, C.; Guenard, D.; Badet, B.; Thal, C.; Silman, I.; Sussman, J.L.
Deposited on : 2004-07-25
Resolution : 2.16 Å(reported)

This is a Full wwPDB X-ray Structure Validation Report for a publicly released PDB entry.

We welcome your comments at validation@mail.wwpdb.org

A user guide is available at

<https://www.wwpdb.org/validation/2017/XrayValidationReportHelp>

with specific help available everywhere you see the ⓘ symbol.

The types of validation reports are described at

<http://www.wwpdb.org/validation/2017/FAQs#types>.

The following versions of software and data (see [references ⓘ](#)) were used in the production of this report:

MolProbity : 4.02b-467
Mogul : 1.8.4, CSD as541be (2020)
Xtriage (Phenix) : 1.13
EDS : 3.0
buster-report : 1.1.7 (2018)
Percentile statistics : 20231227.v01 (using entries in the PDB archive December 27th 2023)
CCP4 : 9.0.003 (Gargrove)
Density-Fitness : 1.0.11
Ideal geometry (proteins) : Engh & Huber (2001)
Ideal geometry (DNA, RNA) : Parkinson et al. (1996)
Validation Pipeline (wwPDB-VP) : 2.39

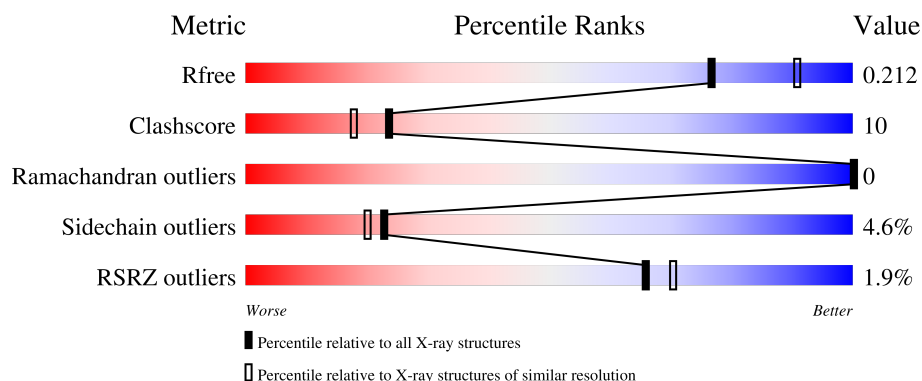
1 Overall quality at a glance

The following experimental techniques were used to determine the structure:

X-RAY DIFFRACTION

The reported resolution of this entry is 2.16 Å.

Percentile scores (ranging between 0-100) for global validation metrics of the entry are shown in the following graphic. The table shows the number of entries on which the scores are based.



Metric	Whole archive (#Entries)	Similar resolution (#Entries, resolution range(Å))
R_{free}	164625	1881 (2.16-2.16)
Clashscore	180529	2047 (2.16-2.16)
Ramachandran outliers	177936	2027 (2.16-2.16)
Sidechain outliers	177891	2026 (2.16-2.16)
RSRZ outliers	164620	1882 (2.16-2.16)

The table below summarises the geometric issues observed across the polymeric chains and their fit to the electron density. The red, orange, yellow and green segments of the lower bar indicate the fraction of residues that contain outliers for ≥ 3 , 2, 1 and 0 types of geometric quality criteria respectively. A grey segment represents the fraction of residues that are not modelled. The numeric value for each fraction is indicated below the corresponding segment, with a dot representing fractions $\leq 5\%$. The upper red bar (where present) indicates the fraction of residues that have poor fit to the electron density. The numeric value is given above the bar.

Mol	Chain	Length	Quality of chain
1	A	543	<div> <div>2%</div> <div> <div></div> <div>81%</div> <div>13%</div> <div>...</div> </div> </div>
2	B	2	<div> <div>50%</div> <div>50%</div> </div>

2 Entry composition [i](#)

There are 5 unique types of molecules in this entry. The entry contains 4608 atoms, of which 0 are hydrogens and 0 are deuteriums.

In the tables below, the ZeroOcc column contains the number of atoms modelled with zero occupancy, the AltConf column contains the number of residues with at least one atom in alternate conformation and the Trace column contains the number of residues modelled with at most 2 atoms.

- Molecule 1 is a protein called ACETYLCHOLINESTERASE.

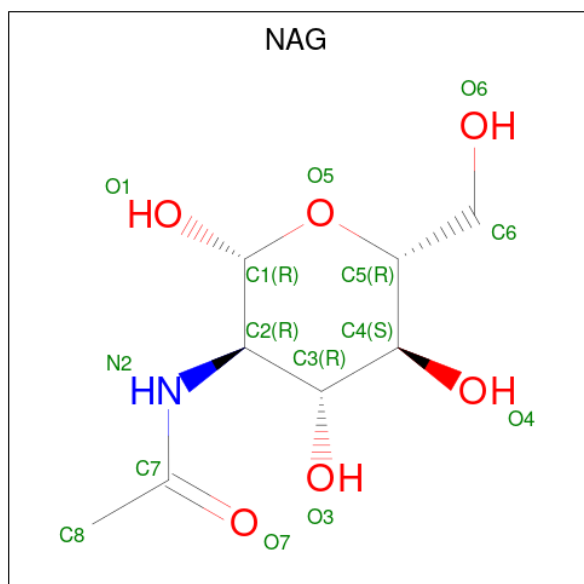
Mol	Chain	Residues	Atoms					ZeroOcc	AltConf	Trace
			Total	C	N	O	S			
1	A	529	4204	2699	713	770	22	0	0	0

- Molecule 2 is an oligosaccharide called 2-acetamido-2-deoxy-beta-D-glucopyranose-(1-4)-2-acetamido-2-deoxy-beta-D-glucopyranose.



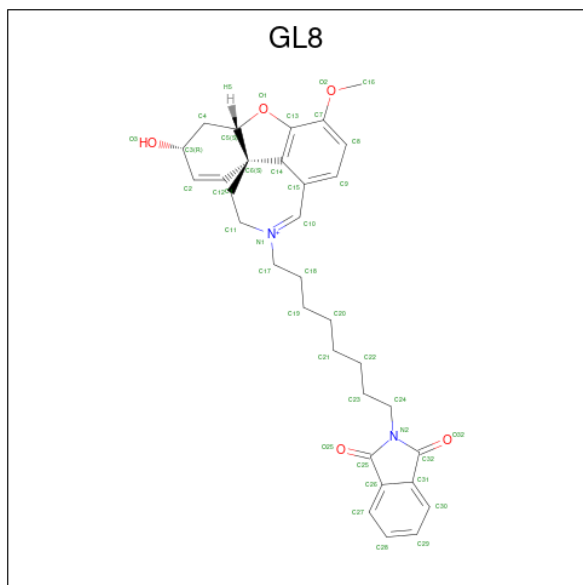
Mol	Chain	Residues	Atoms				ZeroOcc	AltConf	Trace
			Total	C	N	O			
2	B	2	28	16	2	10	0	0	0

- Molecule 3 is 2-acetamido-2-deoxy-beta-D-glucopyranose (three-letter code: NAG) (formula: C₈H₁₅NO₆).



Mol	Chain	Residues	Atoms				ZeroOcc	AltConf
3	A	1	Total	C	N	O	0	0
			14	8	1	5		
3	A	1	Total	C	N	O	0	0
			14	8	1	5		

- Molecule 4 is GALANTHAMINE DERIVATIVE (three-letter code: GL8) (formula: $C_{32}H_{37}N_2O_5$).



Mol	Chain	Residues	Atoms				ZeroOcc	AltConf
4	A	1	Total	C	N	O	0	0
			39	32	2	5		

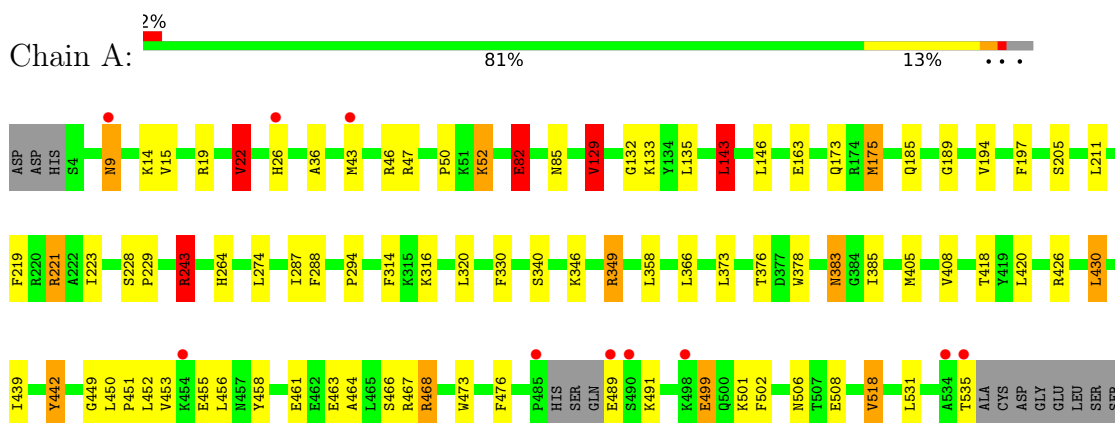
- Molecule 5 is water.

Mol	Chain	Residues	Atoms		ZeroOcc	AltConf
5	A	309	Total	O	0	0
			309	309		

3 Residue-property plots [i](#)

These plots are drawn for all protein, RNA, DNA and oligosaccharide chains in the entry. The first graphic for a chain summarises the proportions of the various outlier classes displayed in the second graphic. The second graphic shows the sequence view annotated by issues in geometry and electron density. Residues are color-coded according to the number of geometric quality criteria for which they contain at least one outlier: green = 0, yellow = 1, orange = 2 and red = 3 or more. A red dot above a residue indicates a poor fit to the electron density ($RSRZ > 2$). Stretches of 2 or more consecutive residues without any outlier are shown as a green connector. Residues present in the sample, but not in the model, are shown in grey.

• Molecule 1: ACETYLCHOLINESTERASE



• Molecule 2: 2-acetamido-2-deoxy-beta-D-glucopyranose-(1-4)-2-acetamido-2-deoxy-beta-D-glucopyranose



4 Data and refinement statistics

Property	Value	Source
Space group	P 31 2 1	Depositor
Cell constants a, b, c, α , β , γ	111.33Å 111.33Å 136.86Å 90.00° 90.00° 120.00°	Depositor
Resolution (Å)	39.41 – 2.16 39.41 – 2.16	Depositor EDS
% Data completeness (in resolution range)	98.6 (39.41-2.16) 98.9 (39.41-2.16)	Depositor EDS
R_{merge}	0.07	Depositor
R_{sym}	(Not available)	Depositor
$\langle I/\sigma(I) \rangle$ ¹	5.00 (at 2.16Å)	Xtriage
Refinement program	CNS 1.1	Depositor
R, R_{free}	0.184 , 0.218 0.175 , 0.212	Depositor DCC
R_{free} test set	2622 reflections (4.99%)	wwPDB-VP
Wilson B-factor (Å ²)	29.8	Xtriage
Anisotropy	0.669	Xtriage
Bulk solvent k_{sol} (e/Å ³), B_{sol} (Å ²)	0.37 , 41.6	EDS
L-test for twinning ²	$\langle L \rangle = 0.50$, $\langle L^2 \rangle = 0.33$	Xtriage
Estimated twinning fraction	0.019 for -h,-k,l	Xtriage
F_o, F_c correlation	0.96	EDS
Total number of atoms	4608	wwPDB-VP
Average B, all atoms (Å ²)	32.0	wwPDB-VP

Xtriage's analysis on translational NCS is as follows: *The largest off-origin peak in the Patterson function is 3.84% of the height of the origin peak. No significant pseudotranslation is detected.*

¹Intensities estimated from amplitudes.

²Theoretical values of $\langle |L| \rangle$, $\langle L^2 \rangle$ for acentric reflections are 0.5, 0.333 respectively for untwinned datasets, and 0.375, 0.2 for perfectly twinned datasets.

5 Model quality

5.1 Standard geometry

Bond lengths and bond angles in the following residue types are not validated in this section: NAG, GL8

The Z score for a bond length (or angle) is the number of standard deviations the observed value is removed from the expected value. A bond length (or angle) with $|Z| > 5$ is considered an outlier worth inspection. RMSZ is the root-mean-square of all Z scores of the bond lengths (or angles).

Mol	Chain	Bond lengths		Bond angles	
		RMSZ	$\# Z > 5$	RMSZ	$\# Z > 5$
1	A	0.96	3/4325 (0.1%)	0.94	10/5873 (0.2%)

Chiral center outliers are detected by calculating the chiral volume of a chiral center and verifying if the center is modelled as a planar moiety or with the opposite hand. A planarity outlier is detected by checking planarity of atoms in a peptide group, atoms in a mainchain group or atoms of a sidechain that are expected to be planar.

Mol	Chain	#Chirality outliers	#Planarity outliers
1	A	0	1

All (3) bond length outliers are listed below:

Mol	Chain	Res	Type	Atoms	Z	Observed(Å)	Ideal(Å)
1	A	175	MET	SD-CE	-8.15	1.32	1.77
1	A	82	GLU	CB-CG	6.45	1.64	1.52
1	A	82	GLU	CG-CD	-5.90	1.43	1.51

All (10) bond angle outliers are listed below:

Mol	Chain	Res	Type	Atoms	Z	Observed(°)	Ideal(°)
1	A	243	ARG	NE-CZ-NH2	-11.89	114.35	120.30
1	A	243	ARG	NE-CZ-NH1	8.19	124.40	120.30
1	A	518	VAL	CB-CA-C	-7.66	96.86	111.40
1	A	22	VAL	CB-CA-C	-6.86	98.36	111.40
1	A	129	VAL	CB-CA-C	-6.62	98.83	111.40
1	A	143	LEU	CA-CB-CG	-6.11	101.24	115.30
1	A	349	ARG	NE-CZ-NH2	-5.70	117.45	120.30
1	A	243	ARG	CG-CD-NE	-5.57	100.10	111.80
1	A	221	ARG	N-CA-CB	-5.54	100.63	110.60
1	A	518	VAL	CG1-CB-CG2	5.14	119.12	110.90

There are no chirality outliers.

All (1) planarity outliers are listed below:

Mol	Chain	Res	Type	Group
1	A	442	TYR	Sidechain

5.2 Too-close contacts ⓘ

In the following table, the Non-H and H(model) columns list the number of non-hydrogen atoms and hydrogen atoms in the chain respectively. The H(added) column lists the number of hydrogen atoms added and optimized by MolProbity. The Clashes column lists the number of clashes within the asymmetric unit, whereas Symm-Clashes lists symmetry-related clashes.

Mol	Chain	Non-H	H(model)	H(added)	Clashes	Symm-Clashes
1	A	4204	0	4053	84	0
2	B	28	0	25	0	0
3	A	28	0	26	0	0
4	A	39	0	37	0	0
5	A	309	0	0	11	1
All	All	4608	0	4141	84	1

The all-atom clashscore is defined as the number of clashes found per 1000 atoms (including hydrogen atoms). The all-atom clashscore for this structure is 10.

All (84) close contacts within the same asymmetric unit are listed below, sorted by their clash magnitude.

Atom-1	Atom-2	Interatomic distance (Å)	Clash overlap (Å)
1:A:452:LEU:HG	5:A:2272:HOH:O	1.24	1.29
1:A:468:ARG:HB2	5:A:2277:HOH:O	1.50	1.11
1:A:194:VAL:HG12	5:A:2127:HOH:O	1.55	1.05
1:A:468:ARG:HD3	5:A:2274:HOH:O	1.73	0.88
1:A:22:VAL:HG13	1:A:133:LYS:HG3	1.62	0.82
1:A:366:LEU:HD23	1:A:531:LEU:HD11	1.60	0.81
1:A:194:VAL:CG1	1:A:219:PHE:HA	2.14	0.77
1:A:468:ARG:NE	5:A:2277:HOH:O	2.17	0.74
1:A:453:VAL:HG22	1:A:456:LEU:HG	1.68	0.74
1:A:346:LYS:HG2	1:A:385:ILE:HD13	1.71	0.73
1:A:366:LEU:CD2	1:A:531:LEU:HD11	2.20	0.71
1:A:36:ALA:HB2	1:A:175:MET:HE2	1.72	0.71
1:A:194:VAL:HG13	1:A:219:PHE:HA	1.75	0.69
1:A:373:LEU:HD12	1:A:378:TRP:HE1	1.59	0.68
1:A:453:VAL:CG2	1:A:456:LEU:HG	2.24	0.67

Continued on next page...

Continued from previous page...

Atom-1	Atom-2	Interatomic distance (Å)	Clash overlap (Å)
1:A:43:MET:HE3	5:A:2018:HOH:O	1.94	0.66
1:A:36:ALA:HB2	1:A:175:MET:CE	2.26	0.65
1:A:452:LEU:HD21	1:A:467:ARG:NE	2.11	0.65
1:A:452:LEU:HD23	1:A:463:GLU:HG3	1.80	0.64
1:A:452:LEU:HD22	1:A:467:ARG:HH21	1.63	0.63
1:A:452:LEU:HD22	1:A:467:ARG:NH2	2.14	0.62
1:A:383:ASN:C	1:A:383:ASN:HD22	2.02	0.62
1:A:243:ARG:NH2	5:A:2155:HOH:O	2.32	0.61
1:A:489:GLU:O	1:A:491:LYS:HE2	2.02	0.59
1:A:366:LEU:HD23	1:A:535:THR:HG21	1.85	0.58
1:A:19:ARG:NH2	1:A:26:HIS:HB2	2.20	0.57
1:A:316:LYS:NZ	5:A:2201:HOH:O	2.36	0.57
1:A:221:ARG:HG2	1:A:476:PHE:CE2	2.41	0.56
1:A:373:LEU:CD1	1:A:378:TRP:HE1	2.19	0.55
1:A:499:GLU:HG2	1:A:501:LYS:HE3	1.89	0.55
1:A:36:ALA:CB	1:A:175:MET:CE	2.86	0.54
1:A:50:PRO:HA	1:A:175:MET:HE3	1.88	0.54
1:A:9:ASN:ND2	1:A:14:LYS:HE2	2.23	0.53
1:A:46:ARG:NE	1:A:163:GLU:OE2	2.41	0.53
1:A:452:LEU:HD21	1:A:467:ARG:CZ	2.38	0.53
1:A:82:GLU:HG3	1:A:85:ASN:HD22	1.73	0.52
1:A:346:LYS:HG2	1:A:385:ILE:CD1	2.39	0.52
1:A:452:LEU:CD2	1:A:467:ARG:NH2	2.72	0.52
1:A:449:GLY:HA2	1:A:466:SER:OG	2.11	0.51
1:A:197:PHE:CB	1:A:223:ILE:HB	2.41	0.50
1:A:464:ALA:O	1:A:468:ARG:HG2	2.11	0.50
1:A:9:ASN:ND2	1:A:14:LYS:HG2	2.26	0.50
1:A:47:ARG:HG3	5:A:2112:HOH:O	2.11	0.49
1:A:366:LEU:CD2	1:A:535:THR:HG21	2.42	0.49
1:A:135:LEU:HD23	1:A:143:LEU:HD13	1.95	0.49
1:A:320:LEU:C	1:A:320:LEU:HD23	2.33	0.49
1:A:461:GLU:H	1:A:461:GLU:CD	2.17	0.48
1:A:197:PHE:HB2	1:A:223:ILE:HB	1.95	0.48
1:A:50:PRO:O	1:A:52:LYS:HE3	2.13	0.48
1:A:146:LEU:C	1:A:146:LEU:HD12	2.35	0.47
1:A:221:ARG:HD3	1:A:476:PHE:O	2.14	0.47
1:A:450:LEU:N	1:A:451:PRO:CD	2.78	0.46
1:A:132:GLY:HA3	1:A:143:LEU:HD22	1.98	0.46
1:A:450:LEU:HD12	1:A:456:LEU:HD11	1.98	0.46
1:A:405:MET:HA	1:A:408:VAL:HG12	1.98	0.45
1:A:19:ARG:NE	1:A:26:HIS:HB3	2.31	0.45

Continued on next page...

Continued from previous page...

Atom-1	Atom-2	Interatomic distance (Å)	Clash overlap (Å)
1:A:420:LEU:HD23	1:A:502:PHE:HB3	1.99	0.45
1:A:506:ASN:OD1	1:A:508:GLU:HG2	2.17	0.45
1:A:228:SER:HB2	1:A:229:PRO:HD2	1.98	0.45
1:A:19:ARG:CZ	1:A:26:HIS:HB2	2.47	0.44
1:A:451:PRO:HA	1:A:458:TYR:CD1	2.52	0.44
1:A:223:ILE:HA	1:A:320:LEU:O	2.18	0.44
1:A:499:GLU:CG	1:A:501:LYS:HE3	2.47	0.44
1:A:349:ARG:NH2	1:A:376:THR:OG1	2.38	0.44
1:A:129:VAL:HG22	5:A:2053:HOH:O	2.18	0.44
1:A:349:ARG:HA	1:A:349:ARG:HD2	1.78	0.43
1:A:499:GLU:HB3	1:A:501:LYS:HG3	2.00	0.43
1:A:426:ARG:CZ	1:A:430:LEU:HD12	2.49	0.42
1:A:173:GLN:OE1	1:A:205:SER:HB3	2.19	0.42
1:A:264:HIS:CD2	5:A:2164:HOH:O	2.71	0.42
1:A:531:LEU:HD12	1:A:531:LEU:O	2.20	0.41
1:A:194:VAL:HG13	1:A:219:PHE:CA	2.48	0.41
1:A:450:LEU:HD12	1:A:456:LEU:CD1	2.49	0.41
1:A:19:ARG:HE	1:A:26:HIS:HB3	1.84	0.41
1:A:439:ILE:HB	1:A:442:TYR:CD1	2.56	0.41
1:A:491:LYS:HA	1:A:491:LYS:HD3	1.92	0.41
1:A:455:GLU:H	1:A:455:GLU:CD	2.24	0.41
1:A:185:GLN:HA	1:A:189:GLY:O	2.20	0.41
1:A:383:ASN:C	1:A:383:ASN:ND2	2.74	0.41
1:A:452:LEU:HD23	1:A:452:LEU:HA	1.81	0.41
1:A:22:VAL:CG1	1:A:133:LYS:HG3	2.42	0.41
1:A:211:LEU:HD23	1:A:314:PHE:HB3	2.04	0.40
1:A:408:VAL:CG2	1:A:418:THR:HG21	2.51	0.40
1:A:19:ARG:NE	1:A:26:HIS:CB	2.85	0.40

All (1) symmetry-related close contacts are listed below. The label for Atom-2 includes the symmetry operator and encoded unit-cell translations to be applied.

Atom-1	Atom-2	Interatomic distance (Å)	Clash overlap (Å)
5:A:2002:HOH:O	5:A:2182:HOH:O[3_564]	2.19	0.01

5.3 Torsion angles

5.3.1 Protein backbone

In the following table, the Percentiles column shows the percent Ramachandran outliers of the chain as a percentile score with respect to all X-ray entries followed by that with respect to entries of similar resolution.

The Analysed column shows the number of residues for which the backbone conformation was analysed, and the total number of residues.

Mol	Chain	Analysed	Favoured	Allowed	Outliers	Percentiles	
1	A	525/543 (97%)	503 (96%)	22 (4%)	0	100	100

There are no Ramachandran outliers to report.

5.3.2 Protein sidechains

In the following table, the Percentiles column shows the percent sidechain outliers of the chain as a percentile score with respect to all X-ray entries followed by that with respect to entries of similar resolution.

The Analysed column shows the number of residues for which the sidechain conformation was analysed, and the total number of residues.

Mol	Chain	Analysed	Rotameric	Outliers	Percentiles	
1	A	458/474 (97%)	437 (95%)	21 (5%)	23	20

All (21) residues with a non-rotameric sidechain are listed below:

Mol	Chain	Res	Type
1	A	9	ASN
1	A	15	VAL
1	A	22	VAL
1	A	52	LYS
1	A	82	GLU
1	A	129	VAL
1	A	143	LEU
1	A	243	ARG
1	A	274	LEU
1	A	287	ILE
1	A	288	PHE
1	A	294	PRO
1	A	330	PHE

Continued on next page...

Continued from previous page...

Mol	Chain	Res	Type
1	A	340	SER
1	A	358	LEU
1	A	383	ASN
1	A	430	LEU
1	A	468	ARG
1	A	473	TRP
1	A	499	GLU
1	A	518	VAL

Sometimes sidechains can be flipped to improve hydrogen bonding and reduce clashes. All (4) such sidechains are listed below:

Mol	Chain	Res	Type
1	A	9	ASN
1	A	68	GLN
1	A	257	ASN
1	A	383	ASN

5.3.3 RNA ⓘ

There are no RNA molecules in this entry.

5.4 Non-standard residues in protein, DNA, RNA chains ⓘ

There are no non-standard protein/DNA/RNA residues in this entry.

5.5 Carbohydrates ⓘ

2 monosaccharides are modelled in this entry.

In the following table, the Counts columns list the number of bonds (or angles) for which Mogul statistics could be retrieved, the number of bonds (or angles) that are observed in the model and the number of bonds (or angles) that are defined in the Chemical Component Dictionary. The Link column lists molecule types, if any, to which the group is linked. The Z score for a bond length (or angle) is the number of standard deviations the observed value is removed from the expected value. A bond length (or angle) with $|Z| > 2$ is considered an outlier worth inspection. RMSZ is the root-mean-square of all Z scores of the bond lengths (or angles).

Mol	Type	Chain	Res	Link	Bond lengths			Bond angles		
					Counts	RMSZ	$\# Z > 2$	Counts	RMSZ	$\# Z > 2$
2	NAG	B	1	1,2	14,14,15	0.80	0	17,19,21	0.76	0
2	NAG	B	2	2	14,14,15	0.68	0	17,19,21	0.72	1 (5%)

In the following table, the Chirals column lists the number of chiral outliers, the number of chiral centers analysed, the number of these observed in the model and the number defined in the Chemical Component Dictionary. Similar counts are reported in the Torsion and Rings columns. '-' means no outliers of that kind were identified.

Mol	Type	Chain	Res	Link	Chirals	Torsions	Rings
2	NAG	B	1	1,2	-	2/6/23/26	0/1/1/1
2	NAG	B	2	2	-	2/6/23/26	0/1/1/1

There are no bond length outliers.

All (1) bond angle outliers are listed below:

Mol	Chain	Res	Type	Atoms	Z	Observed(°)	Ideal(°)
2	B	2	NAG	C2-N2-C7	-2.12	119.89	122.90

There are no chirality outliers.

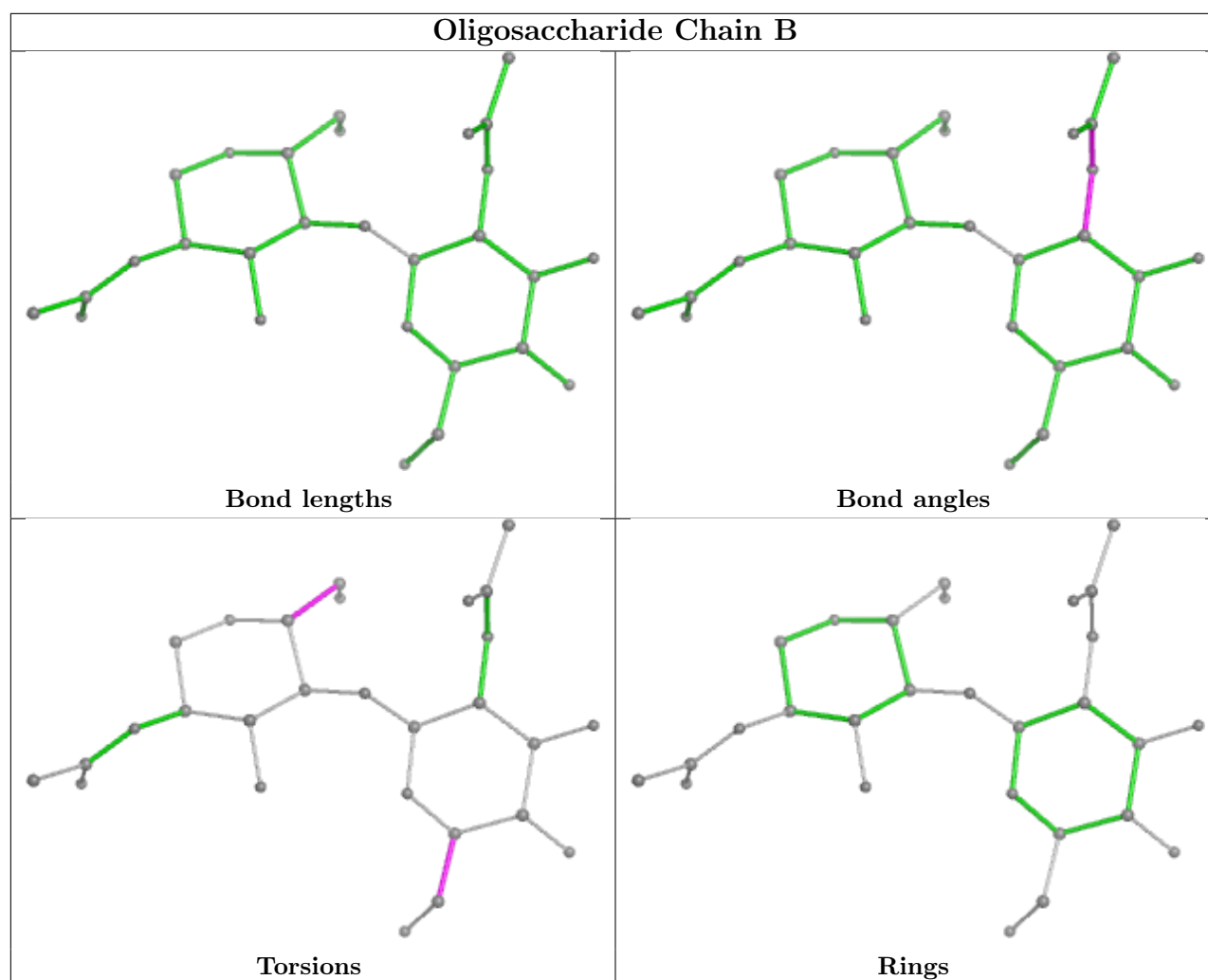
All (4) torsion outliers are listed below:

Mol	Chain	Res	Type	Atoms
2	B	2	NAG	C4-C5-C6-O6
2	B	2	NAG	O5-C5-C6-O6
2	B	1	NAG	C4-C5-C6-O6
2	B	1	NAG	O5-C5-C6-O6

There are no ring outliers.

No monomer is involved in short contacts.

The following is a two-dimensional graphical depiction of Mogul quality analysis of bond lengths, bond angles, torsion angles, and ring geometry for oligosaccharide.



5.6 Ligand geometry [i](#)

3 ligands are modelled in this entry.

In the following table, the Counts columns list the number of bonds (or angles) for which Mogul statistics could be retrieved, the number of bonds (or angles) that are observed in the model and the number of bonds (or angles) that are defined in the Chemical Component Dictionary. The Link column lists molecule types, if any, to which the group is linked. The Z score for a bond length (or angle) is the number of standard deviations the observed value is removed from the expected value. A bond length (or angle) with $|Z| > 2$ is considered an outlier worth inspection. RMSZ is the root-mean-square of all Z scores of the bond lengths (or angles).

Mol	Type	Chain	Res	Link	Bond lengths			Bond angles		
					Counts	RMSZ	# Z > 2	Counts	RMSZ	# Z > 2
4	GL8	A	1540	-	43,44,44	3.49	22 (51%)	59,64,64	2.57	17 (28%)
3	NAG	A	1539	1	14,14,15	1.15	1 (7%)	17,19,21	1.02	1 (5%)
3	NAG	A	1536	1	14,14,15	0.86	1 (7%)	17,19,21	1.17	2 (11%)

In the following table, the Chirals column lists the number of chiral outliers, the number of chiral centers analysed, the number of these observed in the model and the number defined in the Chemical Component Dictionary. Similar counts are reported in the Torsion and Rings columns. '-' means no outliers of that kind were identified.

Mol	Type	Chain	Res	Link	Chirals	Torsions	Rings
4	GL8	A	1540	-	-	2/12/65/65	0/5/6/6
3	NAG	A	1539	1	-	2/6/23/26	0/1/1/1
3	NAG	A	1536	1	-	4/6/23/26	0/1/1/1

All (24) bond length outliers are listed below:

Mol	Chain	Res	Type	Atoms	Z	Observed(Å)	Ideal(Å)
4	A	1540	GL8	C4-C3	13.33	1.66	1.52
4	A	1540	GL8	C6-C1	5.94	1.58	1.51
4	A	1540	GL8	C26-C25	-5.92	1.39	1.48
4	A	1540	GL8	C31-C32	-5.83	1.39	1.48
4	A	1540	GL8	C25-N2	-5.75	1.32	1.39
4	A	1540	GL8	C32-N2	-5.49	1.33	1.39
4	A	1540	GL8	C6-C14	-4.76	1.47	1.52
4	A	1540	GL8	C3-C2	4.39	1.55	1.49
4	A	1540	GL8	O1-C5	-3.85	1.42	1.47
4	A	1540	GL8	C12-C6	3.67	1.58	1.54
4	A	1540	GL8	O25-C25	3.33	1.29	1.22
3	A	1539	NAG	C1-C2	3.16	1.57	1.52
4	A	1540	GL8	O32-C32	3.04	1.28	1.22
4	A	1540	GL8	O3-C3	3.03	1.49	1.43
4	A	1540	GL8	O2-C7	2.77	1.41	1.37
4	A	1540	GL8	C4-C5	2.66	1.57	1.52
4	A	1540	GL8	C13-C14	2.66	1.42	1.38
4	A	1540	GL8	C12-C11	2.63	1.56	1.52
4	A	1540	GL8	C28-C27	2.61	1.44	1.38
4	A	1540	GL8	C9-C15	2.13	1.44	1.41
3	A	1536	NAG	O5-C5	2.09	1.47	1.43
4	A	1540	GL8	C8-C7	2.08	1.43	1.39
4	A	1540	GL8	C29-C30	2.08	1.43	1.38
4	A	1540	GL8	C2-C1	2.01	1.35	1.32

All (20) bond angle outliers are listed below:

Mol	Chain	Res	Type	Atoms	Z	Observed(°)	Ideal(°)
4	A	1540	GL8	C14-C6-C5	-8.36	94.89	99.91
4	A	1540	GL8	O1-C5-C6	7.65	110.96	105.81
4	A	1540	GL8	O3-C3-C2	-7.40	97.91	110.02

Continued on next page...

Continued from previous page...

Mol	Chain	Res	Type	Atoms	Z	Observed(°)	Ideal(°)
4	A	1540	GL8	C4-C5-C6	-5.26	110.50	115.06
4	A	1540	GL8	C13-O1-C5	-4.42	98.97	105.48
4	A	1540	GL8	C5-C4-C3	-4.02	107.17	113.29
4	A	1540	GL8	C12-C6-C5	3.93	116.84	110.68
4	A	1540	GL8	C23-C24-N2	3.72	121.00	112.39
4	A	1540	GL8	C12-C6-C1	-3.40	107.89	112.29
4	A	1540	GL8	C3-C2-C1	-3.20	121.12	124.09
4	A	1540	GL8	C22-C23-C24	-2.86	100.01	113.21
3	A	1539	NAG	C3-C4-C5	-2.80	105.25	110.24
3	A	1536	NAG	C4-C3-C2	-2.74	107.00	111.02
4	A	1540	GL8	O32-C32-N2	2.70	127.44	124.81
4	A	1540	GL8	C12-C6-C14	2.52	118.31	114.48
4	A	1540	GL8	O1-C5-C4	2.30	112.42	109.65
4	A	1540	GL8	C11-N1-C10	2.27	128.57	122.18
4	A	1540	GL8	C11-C12-C6	-2.23	113.08	116.05
4	A	1540	GL8	C12-C11-N1	2.12	118.65	112.81
3	A	1536	NAG	C2-N2-C7	-2.09	119.92	122.90

There are no chirality outliers.

All (8) torsion outliers are listed below:

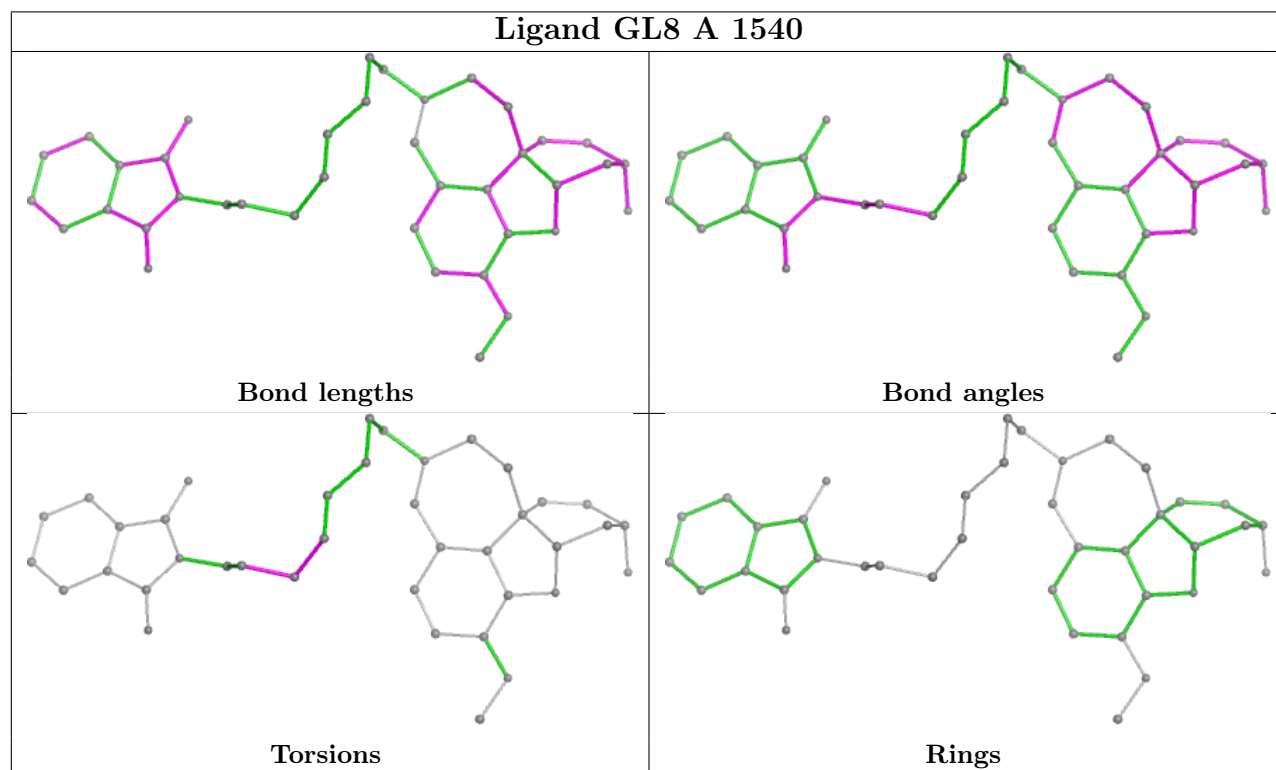
Mol	Chain	Res	Type	Atoms
3	A	1536	NAG	C4-C5-C6-O6
3	A	1536	NAG	O5-C5-C6-O6
3	A	1539	NAG	O5-C5-C6-O6
3	A	1539	NAG	C4-C5-C6-O6
4	A	1540	GL8	C21-C22-C23-C24
3	A	1536	NAG	C8-C7-N2-C2
3	A	1536	NAG	O7-C7-N2-C2
4	A	1540	GL8	C20-C21-C22-C23

There are no ring outliers.

No monomer is involved in short contacts.

The following is a two-dimensional graphical depiction of Mogul quality analysis of bond lengths, bond angles, torsion angles, and ring geometry for all instances of the Ligand of Interest. In addition, ligands with molecular weight > 250 and outliers as shown on the validation Tables will also be included. For torsion angles, if less than 5% of the Mogul distribution of torsion angles is within 10 degrees of the torsion angle in question, then that torsion angle is considered an outlier. Any bond that is central to one or more torsion angles identified as an outlier by Mogul will be highlighted in the graph. For rings, the root-mean-square deviation (RMSD) between the ring in question and similar rings identified by Mogul is calculated over all ring torsion angles. If the

average RMSD is greater than 60 degrees and the minimal RMSD between the ring in question and any Mogul-identified rings is also greater than 60 degrees, then that ring is considered an outlier. The outliers are highlighted in purple. The color gray indicates Mogul did not find sufficient equivalents in the CSD to analyse the geometry.



5.7 Other polymers [i](#)

There are no such residues in this entry.

5.8 Polymer linkage issues [i](#)

There are no chain breaks in this entry.

6 Fit of model and data [i](#)

6.1 Protein, DNA and RNA chains [i](#)

In the following table, the column labelled ‘#RSRZ> 2’ contains the number (and percentage) of RSRZ outliers, followed by percent RSRZ outliers for the chain as percentile scores relative to all X-ray entries and entries of similar resolution. The OWAB column contains the minimum, median, 95th percentile and maximum values of the occupancy-weighted average B-factor per residue. The column labelled ‘Q< 0.9’ lists the number of (and percentage) of residues with an average occupancy less than 0.9.

Mol	Chain	Analysed	<RSRZ>	#RSRZ>2	OWAB(Å ²)	Q<0.9
1	A	529/543 (97%)	-0.33	10 (1%) 66 70	21, 31, 45, 63	0

All (10) RSRZ outliers are listed below:

Mol	Chain	Res	Type	RSRZ
1	A	485	PRO	5.2
1	A	489	GLU	3.5
1	A	534	ALA	3.2
1	A	535	THR	2.4
1	A	9	ASN	2.4
1	A	454	LYS	2.3
1	A	490	SER	2.3
1	A	498	LYS	2.3
1	A	26	HIS	2.2
1	A	43	MET	2.1

6.2 Non-standard residues in protein, DNA, RNA chains [i](#)

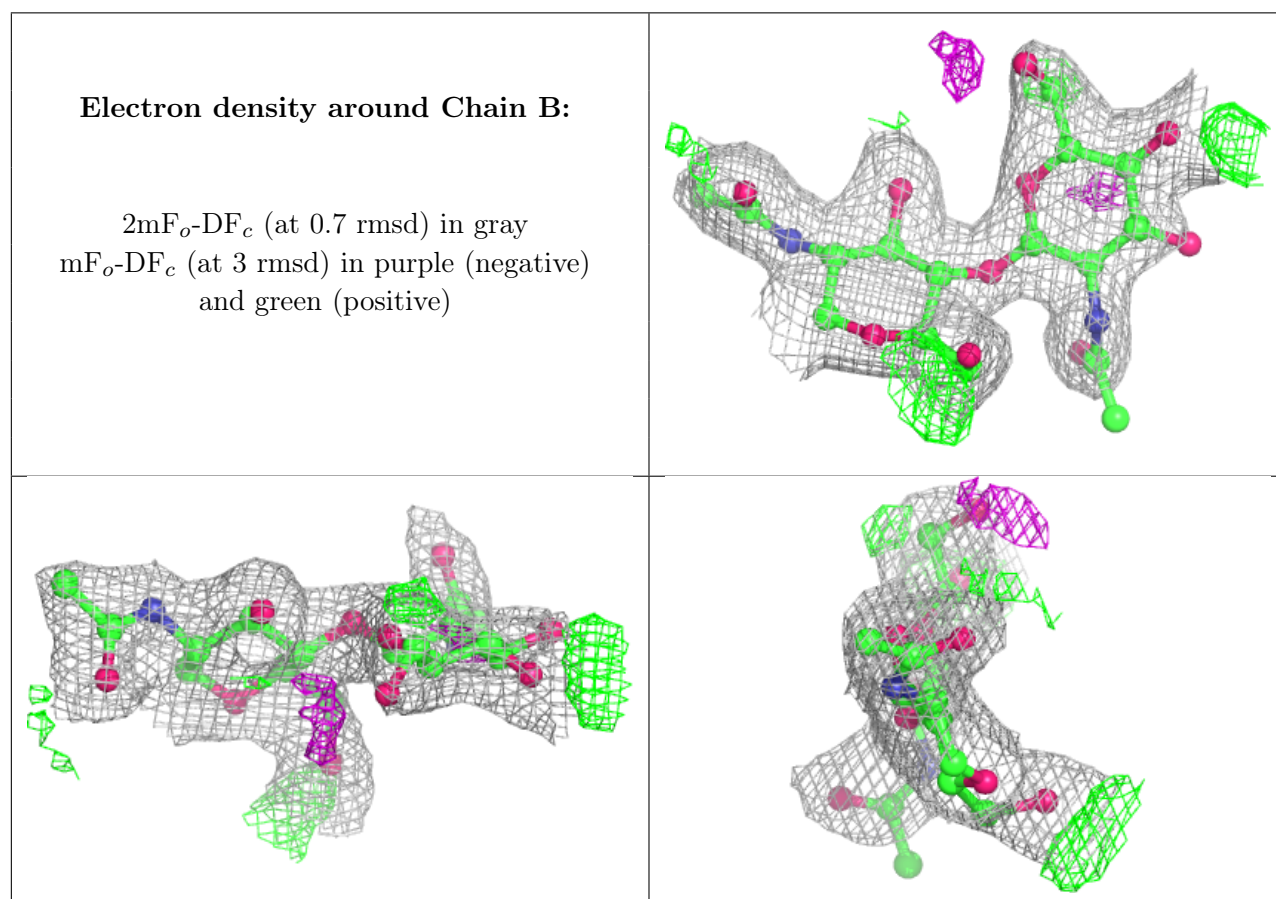
There are no non-standard protein/DNA/RNA residues in this entry.

6.3 Carbohydrates [i](#)

In the following table, the Atoms column lists the number of modelled atoms in the group and the number defined in the chemical component dictionary. The B-factors column lists the minimum, median, 95th percentile and maximum values of B factors of atoms in the group. The column labelled ‘Q< 0.9’ lists the number of atoms with occupancy less than 0.9.

Mol	Type	Chain	Res	Atoms	RSCC	RSR	B-factors(Å ²)	Q<0.9
2	NAG	B	2	14/15	0.73	0.19	59,61,64,64	0
2	NAG	B	1	14/15	0.92	0.10	40,43,50,56	0

The following is a graphical depiction of the model fit to experimental electron density for oligosaccharide. Each fit is shown from different orientation to approximate a three-dimensional view.

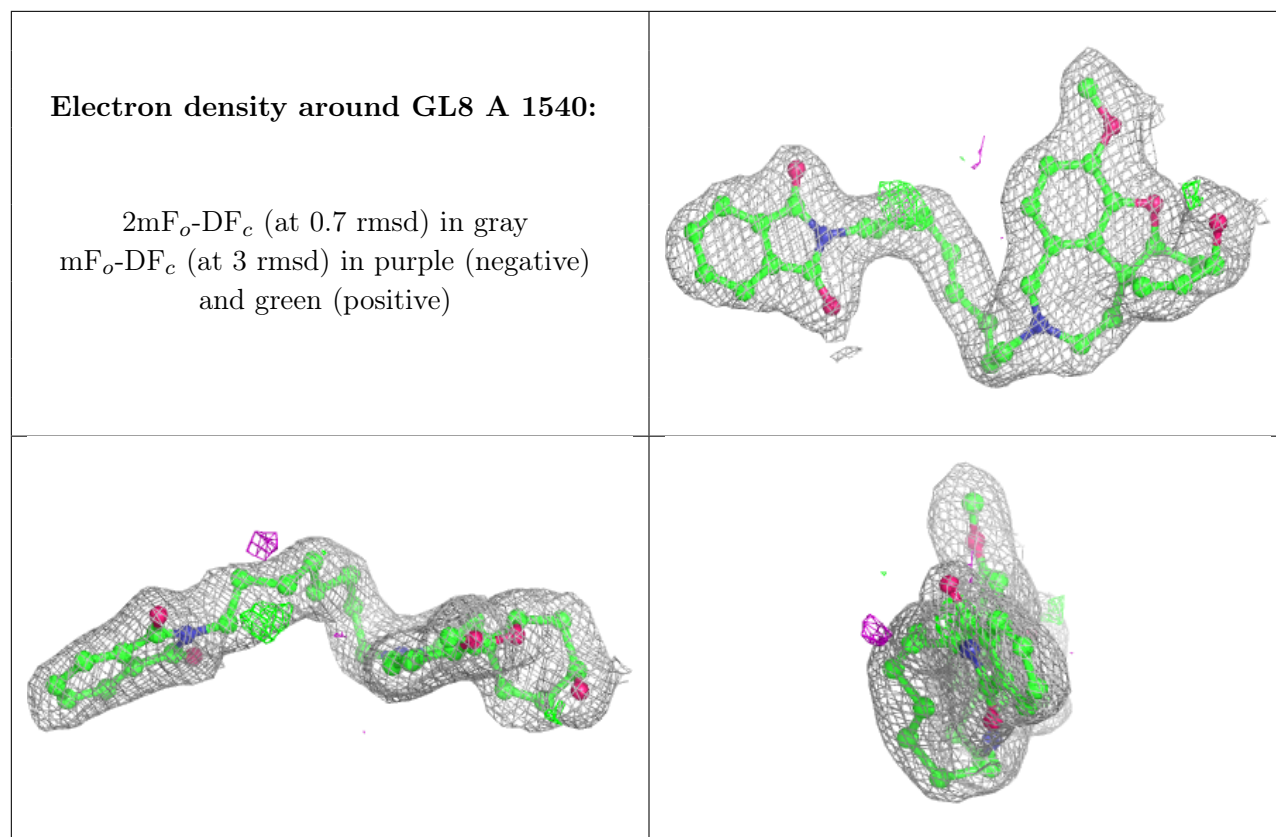


6.4 Ligands [i](#)

In the following table, the Atoms column lists the number of modelled atoms in the group and the number defined in the chemical component dictionary. The B-factors column lists the minimum, median, 95th percentile and maximum values of B factors of atoms in the group. The column labelled 'Q< 0.9' lists the number of atoms with occupancy less than 0.9.

Mol	Type	Chain	Res	Atoms	RSCC	RSR	B-factors(Å ²)	Q<0.9
3	NAG	A	1536	14/15	0.75	0.17	57,60,63,66	0
3	NAG	A	1539	14/15	0.76	0.15	61,65,67,70	0
4	GL8	A	1540	39/39	0.95	0.08	22,25,39,43	0

The following is a graphical depiction of the model fit to experimental electron density of all instances of the Ligand of Interest. In addition, ligands with molecular weight > 250 and outliers as shown on the geometry validation Tables will also be included. Each fit is shown from different orientation to approximate a three-dimensional view.



6.5 Other polymers [i](#)

There are no such residues in this entry.