



Full wwPDB EM Validation Report ⓘ

May 31, 2025 – 02:37 PM EDT

PDB ID : 8TJO / pdb_00008tjo
EMDB ID : EMD-41306
Title : Crosslinked 6-deoxyerythronolide B synthase (DEBS) Module 1 in complex with antibody fragment 1B2: Crosslinked Intra-State 1
Authors : Cogan, D.P.; Soohoo, A.M.; Chen, M.; Brodsky, K.L.; Liu, Y.; Khosla, C.
Deposited on : 2023-07-23
Resolution : 3.61 Å(reported)
Based on initial model : 7M7F

This is a Full wwPDB EM Validation Report for a publicly released PDB entry.

We welcome your comments at validation@mail.wwpdb.org

A user guide is available at

<https://www.wwpdb.org/validation/2017/EMValidationReportHelp>
with specific help available everywhere you see the ⓘ symbol.

The types of validation reports are described at

<http://www.wwpdb.org/validation/2017/FAQs#types>.

The following versions of software and data (see [references ⓘ](#)) were used in the production of this report:

EMDB validation analysis : 0.0.1.dev118
Mogul : 2022.3.0, CSD as543be (2022)
MolProbity : 4-5-2 with Phenix2.0rc1
Percentile statistics : 20231227.v01 (using entries in the PDB archive December 27th 2023)
MapQ : 1.9.13
Ideal geometry (proteins) : Engh & Huber (2001)
Ideal geometry (DNA, RNA) : Parkinson et al. (1996)
Validation Pipeline (wwPDB-VP) : 2.43.1

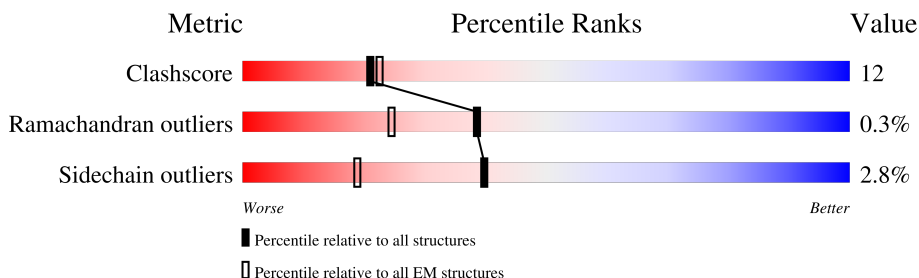
1 Overall quality at a glance

The following experimental techniques were used to determine the structure:

ELECTRON MICROSCOPY

The reported resolution of this entry is 3.61 Å.

Percentile scores (ranging between 0-100) for global validation metrics of the entry are shown in the following graphic. The table shows the number of entries on which the scores are based.



Metric	Whole archive (#Entries)	EM structures (#Entries)
Clashscore	210492	15764
Ramachandran outliers	207382	16835
Sidechain outliers	206894	16415

The table below summarises the geometric issues observed across the polymeric chains and their fit to the map. The red, orange, yellow and green segments of the bar indicate the fraction of residues that contain outliers for ≥ 3 , 2, 1 and 0 types of geometric quality criteria respectively. A grey segment represents the fraction of residues that are not modelled. The numeric value for each fraction is indicated below the corresponding segment, with a dot representing fractions $\leq 5\%$. The upper red bar (where present) indicates the fraction of residues that have poor fit to the EM map (all-atom inclusion $< 40\%$). The numeric value is given above the bar.

Mol	Chain	Length	Quality of chain
1	A	1784	
1	B	1784	
2	C	249	
2	E	249	
3	D	236	
3	F	236	

2 Entry composition

There are 3 unique types of molecules in this entry. The entry contains 22287 atoms, of which 0 are hydrogens and 0 are deuteriums.

In the tables below, the AltConf column contains the number of residues with at least one atom in alternate conformation and the Trace column contains the number of residues modelled with at most 2 atoms.

- Molecule 1 is a protein called EryAI,6-deoxyerythronolide-B synthase EryA3, modules 5 and 6.

Mol	Chain	Residues	Atoms						AltConf	Trace
1	A	1370	Total	C	N	O	P	S	0	0
			10158	6319	1865	1941	1	32		
1	B	800	Total	C	N	O	S		0	0
			5915	3690	1076	1126	23			

- Molecule 2 is a protein called Antibody Fragment 1B2, Heavy Chain.

Mol	Chain	Residues	Atoms					AltConf	Trace
2	C	205	Total	C	N	O	S	0	0
			1539	978	257	298	6		
2	E	205	Total	C	N	O	S	0	0
			1539	978	257	298	6		

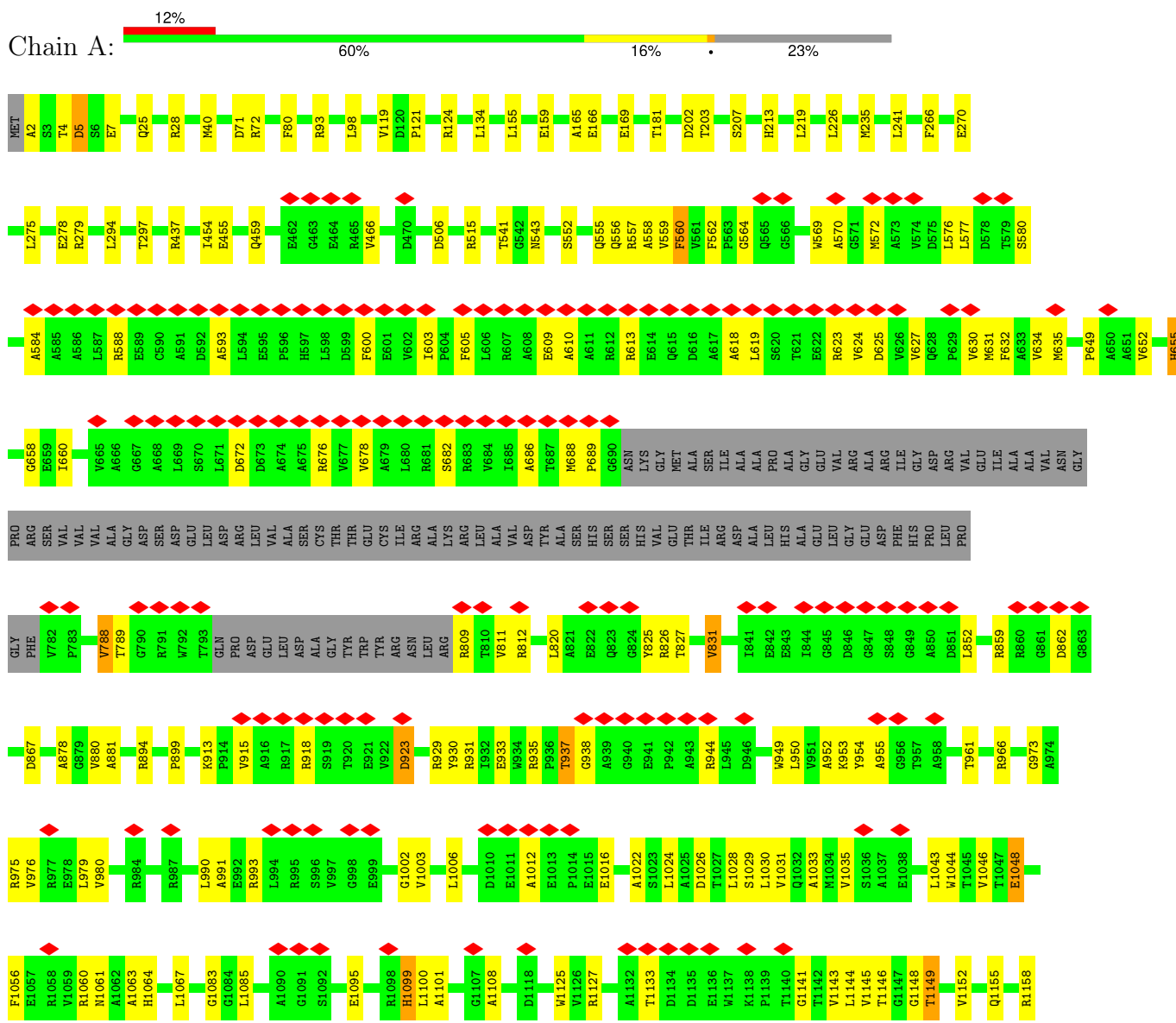
- Molecule 3 is a protein called Antibody Fragment 1B2, Light Chain.

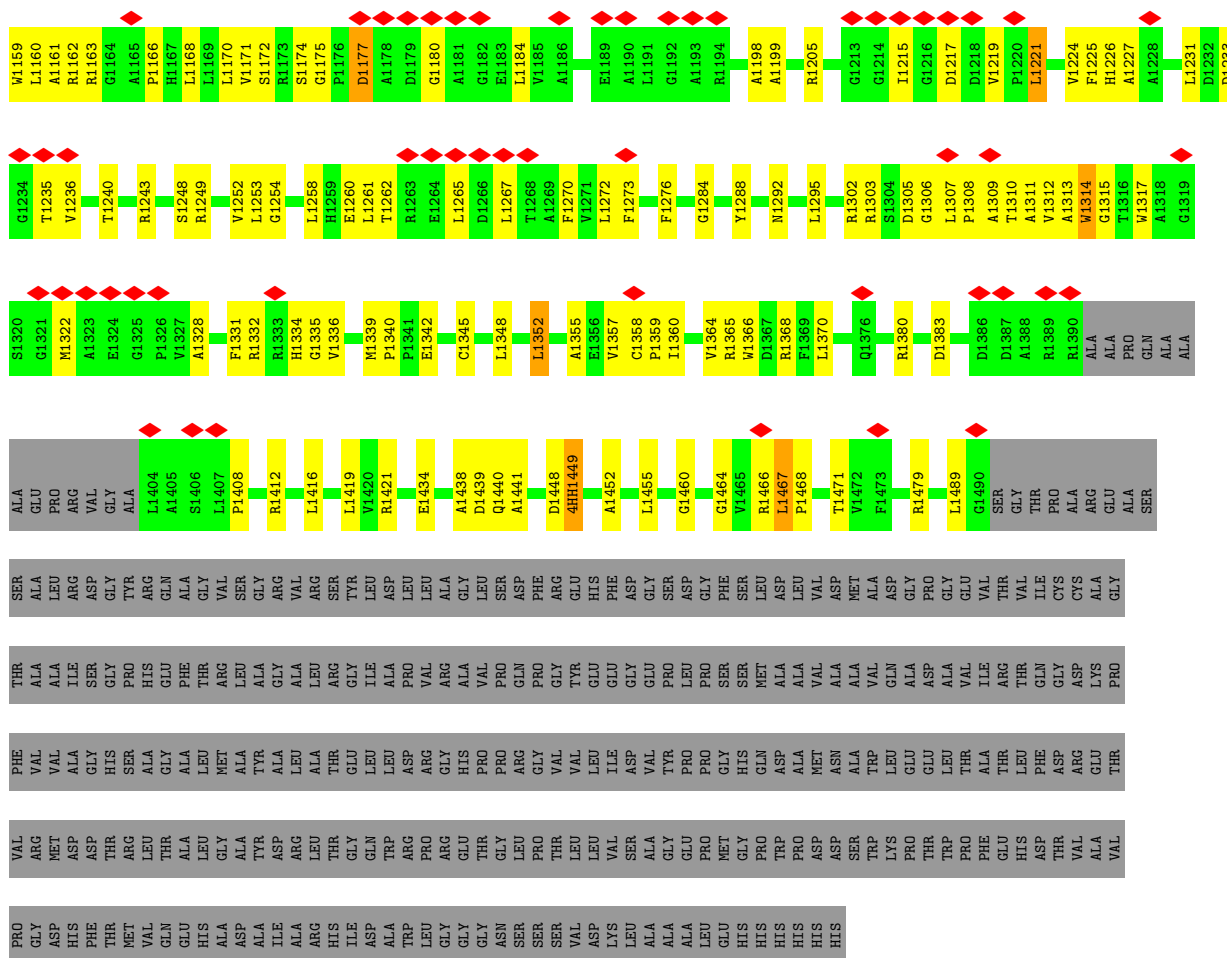
Mol	Chain	Residues	Atoms					AltConf	Trace
3	D	206	Total	C	N	O	S	0	0
			1568	983	262	317	6		
3	F	206	Total	C	N	O	S	0	0
			1568	984	262	316	6		

3 Residue-property plots

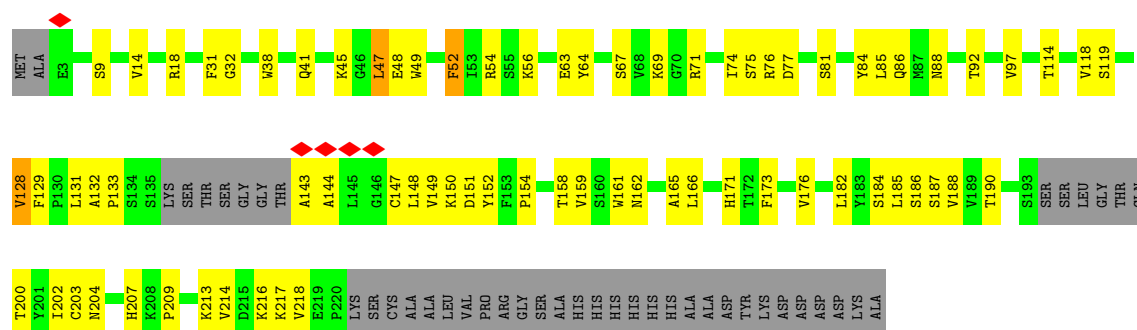
These plots are drawn for all protein, RNA, DNA and oligosaccharide chains in the entry. The first graphic for a chain summarises the proportions of the various outlier classes displayed in the second graphic. The second graphic shows the sequence view annotated by issues in geometry and atom inclusion in map density. Residues are color-coded according to the number of geometric quality criteria for which they contain at least one outlier: green = 0, yellow = 1, orange = 2 and red = 3 or more. A red diamond above a residue indicates a poor fit to the EM map for this residue (all-atom inclusion < 40%). Stretches of 2 or more consecutive residues without any outlier are shown as a green connector. Residues present in the sample, but not in the model, are shown in grey.

- Molecule 1: EryAI,6-deoxyerythronolide-B synthase EryA3, modules 5 and 6



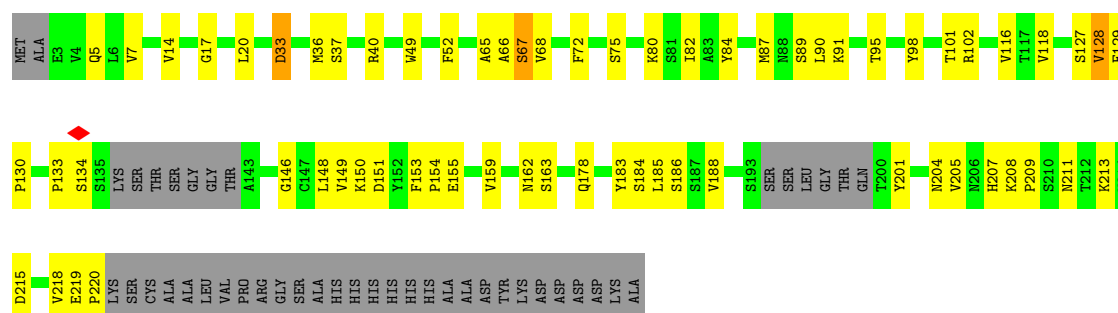






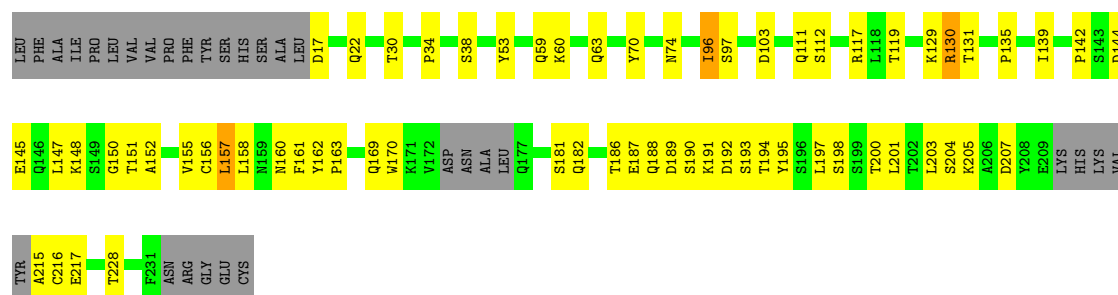
• Molecule 2: Antibody Fragment 1B2, Heavy Chain

Chain E: 56% 25% 18%



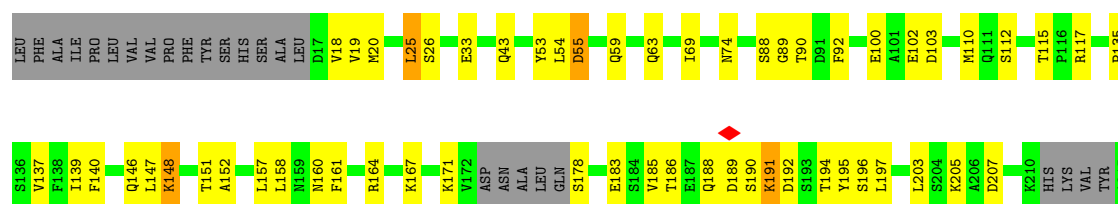
• Molecule 3: Antibody Fragment 1B2, Light Chain

Chain D: 60% 26% 13%



• Molecule 3: Antibody Fragment 1B2, Light Chain

Chain F: 59% 25% 13%



C216	E217	V218	T219	H220	L223	S224	V227	T228	K229	S230	F231	ASN	ARG	GLY	GLU	CYS
------	------	------	------	------	------	------	------	------	------	------	------	-----	-----	-----	-----	-----

4 Experimental information

Property	Value	Source
EM reconstruction method	SINGLE PARTICLE	Depositor
Imposed symmetry	POINT, C1	Depositor
Number of particles used	92037	Depositor
Resolution determination method	FSC 0.143 CUT-OFF	Depositor
CTF correction method	PHASE FLIPPING AND AMPLITUDE CORRECTION	Depositor
Microscope	FEI TITAN KRIOS	Depositor
Voltage (kV)	300	Depositor
Electron dose ($e^-/\text{\AA}^2$)	50	Depositor
Minimum defocus (nm)	1000	Depositor
Maximum defocus (nm)	2500	Depositor
Magnification	81000	Depositor
Image detector	GATAN K3 BIOQUANTUM (6k x 4k)	Depositor
Maximum map value	1.462	Depositor
Minimum map value	-0.366	Depositor
Average map value	0.001	Depositor
Map value standard deviation	0.029	Depositor
Recommended contour level	0.416	Depositor
Map size (\AA)	563.2, 563.2, 563.2	wwPDB
Map dimensions	512, 512, 512	wwPDB
Map angles ($^\circ$)	90.0, 90.0, 90.0	wwPDB
Pixel spacing (\AA)	1.1, 1.1, 1.1	Depositor

5 Model quality

5.1 Standard geometry

Bond lengths and bond angles in the following residue types are not validated in this section: 4HH

The Z score for a bond length (or angle) is the number of standard deviations the observed value is removed from the expected value. A bond length (or angle) with $|Z| > 5$ is considered an outlier worth inspection. RMSZ is the root-mean-square of all Z scores of the bond lengths (or angles).

Mol	Chain	Bond lengths		Bond angles	
		RMSZ	# $ Z > 5$	RMSZ	# $ Z > 5$
1	A	0.12	0/10326	0.32	0/14057
1	B	0.12	0/6038	0.33	0/8215
2	C	0.14	0/1575	0.37	0/2141
2	E	0.19	0/1575	0.40	0/2141
3	D	0.16	0/1601	0.40	0/2175
3	F	0.39	3/1601 (0.2%)	0.72	11/2174 (0.5%)
All	All	0.16	3/22716 (0.0%)	0.38	11/30903 (0.0%)

All (3) bond length outliers are listed below:

Mol	Chain	Res	Type	Atoms	Z	Observed(Å)	Ideal(Å)
3	F	217	GLU	C-N	-6.98	1.24	1.33
3	F	228	THR	CA-C	-6.64	1.44	1.52
3	F	228	THR	C-O	-6.12	1.17	1.23

All (11) bond angle outliers are listed below:

Mol	Chain	Res	Type	Atoms	Z	Observed(°)	Ideal(°)
3	F	217	GLU	CB-CG-CD	-13.71	89.30	112.60
3	F	228	THR	CA-C-O	-8.56	112.11	121.28
3	F	228	THR	CA-CB-OG1	-8.33	97.10	109.60
3	F	217	GLU	CA-C-N	7.74	133.75	122.99
3	F	217	GLU	C-N-CA	7.74	133.75	122.99
3	F	216	CYS	O-C-N	-7.16	114.82	123.19
3	F	228	THR	N-CA-CB	-6.98	99.84	111.57
3	F	227	VAL	CA-C-N	-5.99	110.95	122.09
3	F	227	VAL	C-N-CA	-5.99	110.95	122.09
3	F	216	CYS	CA-C-N	-5.59	113.87	122.87
3	F	216	CYS	C-N-CA	-5.59	113.87	122.87

There are no chirality outliers.

There are no planarity outliers.

5.2 Too-close contacts

In the following table, the Non-H and H(model) columns list the number of non-hydrogen atoms and hydrogen atoms in the chain respectively. The H(added) column lists the number of hydrogen atoms added and optimized by MolProbity. The Clashes column lists the number of clashes within the asymmetric unit, whereas Symm-Clashes lists symmetry-related clashes.

Mol	Chain	Non-H	H(model)	H(added)	Clashes	Symm-Clashes
1	A	10158	0	10022	218	0
1	B	5915	0	5803	121	0
2	C	1539	0	1513	51	0
2	E	1539	0	1511	51	0
3	D	1568	0	1528	48	0
3	F	1568	0	1533	47	0
All	All	22287	0	21910	518	0

The all-atom clashscore is defined as the number of clashes found per 1000 atoms (including hydrogen atoms). The all-atom clashscore for this structure is 12.

All (518) close contacts within the same asymmetric unit are listed below, sorted by their clash magnitude.

Atom-1	Atom-2	Interatomic distance (Å)	Clash overlap (Å)
3:D:142:PRO:HB3	3:D:147:LEU:HD13	1.49	0.94
3:D:144:ASP:OD1	3:D:145:GLU:N	2.07	0.86
1:A:1328:ALA:O	1:A:1332:ARG:HB2	1.75	0.84
1:A:1215:ILE:HG13	1:A:1217:ASP:H	1.46	0.80
3:F:135:PRO:HB3	3:F:161:PHE:HB3	1.67	0.76
1:A:1262:THR:HG22	1:A:1262:THR:O	1.86	0.75
2:E:75:SER:HB3	2:E:84:TYR:HB2	1.68	0.75
1:A:1313:ALA:HB3	1:A:1360:ILE:HG23	1.70	0.73
1:A:1262:THR:CG2	1:A:1267:LEU:HD13	2.20	0.72
1:B:569:TRP:O	1:B:571:GLY:N	2.22	0.72
2:C:128:VAL:HG12	2:C:149:VAL:HG13	1.72	0.72
1:A:991:ALA:HB2	1:A:1033:ALA:HB1	1.70	0.72
2:E:95:THR:HG22	2:E:118:VAL:H	1.56	0.71
1:A:1144:LEU:HD12	1:A:1224:VAL:HG22	1.70	0.70
1:A:1273:PHE:HA	1:A:1312:VAL:HB	1.73	0.70
1:A:560:PHE:HE1	1:A:831:VAL:HB	1.56	0.70
1:A:1252:VAL:HG23	1:A:1253:LEU:HD22	1.74	0.70

Continued on next page...

Continued from previous page...

Atom-1	Atom-2	Interatomic distance (Å)	Clash overlap (Å)
2:C:171:HIS:HB2	2:C:173:PHE:HE1	1.56	0.70
1:A:1240:THR:HG22	1:A:1243:ARG:HE	1.55	0.70
3:F:217:GLU:OE2	3:F:218:VAL:N	2.25	0.70
3:F:102:GLU:OE1	3:F:102:GLU:N	2.25	0.69
1:B:588:ARG:HH12	1:B:602:VAL:HG21	1.56	0.69
2:E:66:ALA:O	2:E:68:VAL:N	2.26	0.69
1:B:79:LEU:O	1:B:90:ALA:N	2.25	0.69
1:B:567:TRP:HE3	1:B:833:ALA:H	1.41	0.68
1:A:1099:HIS:O	1:A:1101:ALA:N	2.26	0.68
1:A:955:ALA:HA	1:A:980:VAL:HB	1.76	0.67
1:A:1180:GLY:HA2	1:A:1184:LEU:HD23	1.76	0.67
1:A:1311:ALA:HB3	1:A:1358:CYS:HA	1.76	0.67
1:A:556:GLN:O	1:A:557:ARG:NH1	2.27	0.66
1:B:833:ALA:HA	1:B:858:LEU:HB2	1.76	0.66
1:B:497:ARG:HH21	1:B:533:LEU:HD13	1.60	0.66
1:B:794:GLN:HG2	1:B:796:ASP:H	1.57	0.66
2:C:77:ASP:O	2:C:81:SER:HA	1.96	0.66
2:E:129:PHE:HB3	2:E:148:LEU:O	1.96	0.66
1:A:1272:LEU:HD22	1:A:1311:ALA:HA	1.78	0.65
2:E:154:PRO:HD2	2:E:207:HIS:HE2	1.60	0.65
1:A:1162:ARG:NH1	1:A:1342:GLU:OE2	2.29	0.65
1:A:559:VAL:HG11	1:A:820:LEU:HD21	1.79	0.65
2:E:87:MET:HE3	2:E:87:MET:HA	1.79	0.65
1:A:515:ARG:NH2	1:A:899:PRO:O	2.30	0.65
1:A:1235:THR:HG22	1:A:1236:VAL:HG12	1.79	0.65
1:A:72:ARG:NH2	1:A:270:GLU:OE2	2.29	0.65
1:B:567:TRP:HE1	1:B:631:MET:HE2	1.61	0.64
1:B:578:ASP:OD1	1:B:579:THR:N	2.31	0.63
3:F:33:GLU:OE2	3:F:33:GLU:N	2.26	0.63
1:A:1227:ALA:HA	1:A:1273:PHE:HB2	1.79	0.63
2:E:89:SER:O	2:E:91:LYS:NZ	2.32	0.63
1:A:459:GLN:N	1:A:459:GLN:OE1	2.31	0.63
1:A:966:ARG:HB2	1:A:976:VAL:HG11	1.79	0.63
2:E:129:PHE:CB	2:E:148:LEU:O	2.47	0.63
1:A:203:THR:H	1:A:207:SER:HB3	1.62	0.62
1:A:610:ALA:HB2	1:A:613:ARG:HH21	1.63	0.62
1:A:630:VAL:O	1:A:634:VAL:HG23	2.00	0.62
1:A:1272:LEU:H	1:A:1310:THR:HB	1.64	0.62
3:D:188:GLN:HE21	3:D:193:SER:HB2	1.63	0.62
1:A:4:THR:OG1	1:A:5:ASP:N	2.33	0.62
1:A:1152:VAL:HG13	1:A:1317:TRP:HE1	1.64	0.62

Continued on next page...

Continued from previous page...

Atom-1	Atom-2	Interatomic distance (Å)	Clash overlap (Å)
3:D:130:ARG:NH2	3:D:131:THR:OG1	2.32	0.62
1:A:929:ARG:HA	1:A:929:ARG:NH1	2.15	0.62
3:D:111:GLN:O	3:D:117:ARG:NH1	2.33	0.62
1:A:437:ARG:HG2	1:A:455:GLU:HG3	1.80	0.62
1:A:1143:VAL:HA	1:A:1221:LEU:HD13	1.80	0.62
3:F:55:ASP:OD1	3:F:55:ASP:N	2.32	0.62
1:A:923:ASP:N	1:A:923:ASP:OD1	2.32	0.61
1:B:391:MET:HE2	1:B:391:MET:HA	1.82	0.61
1:B:830:GLU:OE2	1:B:830:GLU:N	2.33	0.61
3:F:18:VAL:HG13	3:F:20:MET:H	1.65	0.61
1:B:560:PHE:HD2	1:B:649:PRO:HB3	1.64	0.61
2:C:154:PRO:HD2	2:C:209:PRO:HG2	1.83	0.61
3:F:160:ASN:HA	3:F:194:THR:HB	1.83	0.61
2:E:5:GLN:OE1	2:E:5:GLN:N	2.26	0.61
1:A:213:HIS:ND1	1:A:297:THR:OG1	2.34	0.60
2:C:133:PRO:HA	2:C:144:ALA:HB2	1.83	0.60
1:A:1172:SER:H	1:A:1198:ALA:HB3	1.64	0.60
1:A:1235:THR:HG23	1:A:1284:GLY:HA2	1.83	0.60
1:A:569:TRP:CG	1:A:570:ALA:H	2.19	0.60
2:E:20:LEU:H	2:E:87:MET:HB2	1.66	0.60
1:A:953:LYS:HB2	1:A:1006:LEU:HB3	1.82	0.60
1:A:72:ARG:NH1	1:A:235:MET:O	2.35	0.60
1:A:1307:LEU:HD21	1:A:1355:ALA:HB1	1.83	0.60
3:F:183:GLU:N	3:F:183:GLU:OE2	2.34	0.60
1:A:1452:ALA:O	1:A:1455:LEU:HB3	2.02	0.60
1:A:1144:LEU:HG	1:A:1221:LEU:HD11	1.82	0.60
1:A:1310:THR:HA	1:A:1357:VAL:HA	1.84	0.60
2:E:129:PHE:HZ	3:F:147:LEU:HD13	1.66	0.59
3:F:100:GLU:N	3:F:100:GLU:OE2	2.35	0.59
2:E:37:SER:HG	2:E:101:THR:HG1	1.46	0.59
1:B:263:ALA:O	1:B:345:ARG:NH2	2.35	0.59
1:A:159:GLU:OE2	1:B:163:ARG:NE	2.35	0.59
1:B:593:ALA:O	1:B:597:HIS:NE2	2.35	0.59
2:C:173:PHE:HB2	2:C:186:SER:HB3	1.85	0.58
3:D:53:TYR:HB3	3:D:112:SER:HB3	1.85	0.58
1:A:593:ALA:O	1:A:676:ARG:NH2	2.31	0.58
3:F:158:LEU:HD12	3:F:197:LEU:HD22	1.85	0.58
2:C:132:ALA:HB1	2:C:133:PRO:HD2	1.85	0.58
3:F:191:LYS:H	3:F:191:LYS:HZ2	1.50	0.58
1:B:570:ALA:HB3	1:B:572:MET:HE1	1.85	0.58
3:D:59:GLN:NE2	3:D:63:GLN:O	2.29	0.58

Continued on next page...

Continued from previous page...

Atom-1	Atom-2	Interatomic distance (Å)	Clash overlap (Å)
1:B:84:PRO:O	1:B:246:ARG:NH2	2.37	0.57
1:B:656:SER:OG	1:B:657:GLN:N	2.34	0.57
3:F:205:LYS:O	3:F:205:LYS:HD3	2.04	0.57
1:A:169:GLU:N	1:A:169:GLU:OE2	2.37	0.57
1:A:929:ARG:HA	1:A:929:ARG:HH11	1.69	0.57
1:A:953:LYS:HD3	1:A:954:TYR:HB2	1.86	0.57
1:A:1022:ALA:O	1:A:1026:ASP:HB2	2.04	0.57
1:B:885:GLU:OE2	1:B:885:GLU:N	2.24	0.57
2:C:151:ASP:HA	2:C:182:LEU:HD12	1.86	0.57
1:B:814:ALA:O	1:B:818:ARG:HG2	2.04	0.57
2:C:41:GLN:NE2	2:C:45:LYS:O	2.35	0.57
1:A:506:ASP:OD2	1:A:894:ARG:NH1	2.38	0.57
1:B:99:THR:OG1	1:B:100:GLU:OE2	2.22	0.57
2:C:204:ASN:HB3	2:C:214:VAL:HG13	1.87	0.57
1:A:1334:HIS:HA	1:A:1368:ARG:HE	1.69	0.57
1:A:572:MET:SD	1:A:572:MET:N	2.78	0.57
1:A:1159:TRP:CD1	1:A:1345:CYS:HB3	2.39	0.57
1:B:361:ARG:HE	1:B:361:ARG:N	2.02	0.57
3:D:215:ALA:HB3	3:D:228:THR:HG23	1.87	0.57
2:E:207:HIS:O	2:E:211:ASN:N	2.34	0.57
1:A:181:THR:OG1	1:B:202:ASP:OD1	2.20	0.56
1:A:1366:TRP:HD1	1:A:1370:LEU:HD21	1.70	0.56
3:F:110:MET:HE1	3:F:117:ARG:HD2	1.86	0.56
1:B:565:GLN:OE1	1:B:565:GLN:N	2.33	0.56
2:E:20:LEU:N	2:E:87:MET:HB2	2.20	0.56
3:F:59:GLN:NE2	3:F:63:GLN:O	2.38	0.56
1:A:1158:ARG:O	1:A:1161:ALA:HB3	2.04	0.56
1:A:1307:LEU:HG	1:A:1308:PRO:HD2	1.87	0.56
3:F:139:ILE:HG22	3:F:229:LYS:HE3	1.87	0.56
1:A:1024:LEU:O	1:A:1028:LEU:HG	2.05	0.56
2:C:150:LYS:NZ	2:C:151:ASP:OD1	2.31	0.56
1:A:1262:THR:O	1:A:1262:THR:CG2	2.54	0.56
1:A:202:ASP:OD2	1:B:181:THR:OG1	2.24	0.56
1:A:1031:VAL:O	1:A:1035:VAL:HG12	2.06	0.56
2:E:87:MET:HB3	2:E:90:LEU:HD21	1.88	0.56
2:C:67:SER:O	2:C:71:ARG:NH1	2.39	0.56
2:C:128:VAL:HG23	2:C:129:PHE:H	1.70	0.56
1:A:933:GLU:OE2	1:A:935:ARG:NH1	2.38	0.55
1:A:1026:ASP:O	1:A:1030:LEU:HG	2.07	0.55
1:A:1288:TYR:O	1:A:1292:ASN:ND2	2.39	0.55
1:A:1438:ALA:HB1	1:A:1479:ARG:HD3	1.87	0.55

Continued on next page...

Continued from previous page...

Atom-1	Atom-2	Interatomic distance (Å)	Clash overlap (Å)
1:B:607:ARG:HH12	1:B:609:GLU:HB2	1.72	0.55
2:E:149:VAL:N	2:E:185:LEU:O	2.26	0.55
2:E:148:LEU:HA	2:E:186:SER:HA	1.88	0.55
1:A:1145:VAL:HB	1:A:1170:LEU:HD22	1.89	0.55
2:C:86:GLN:NE2	2:C:88:ASN:OD1	2.33	0.55
1:B:26:ARG:NH1	1:B:29:GLU:OE2	2.39	0.55
1:A:1308:PRO:HD3	1:B:82:PRO:HD2	1.88	0.55
1:B:221:ARG:NH1	1:B:223:GLU:OE1	2.39	0.55
1:A:627:VAL:O	1:A:631:MET:N	2.32	0.55
1:B:356:PHE:HD1	1:B:361:ARG:HH22	1.52	0.55
1:A:71:ASP:OD1	1:A:71:ASP:N	2.34	0.55
1:A:949:TRP:CE2	1:A:1002:GLY:HA3	2.42	0.55
1:A:1160:LEU:HD12	1:A:1160:LEU:H	1.71	0.55
1:A:1440:GLN:HE21	1:B:553:ARG:HH21	1.54	0.55
3:D:203:LEU:HD12	3:D:204:SER:N	2.21	0.55
1:A:541:THR:OG1	1:A:543:ASN:OD1	2.24	0.55
3:D:30:THR:HG23	3:D:129:LYS:HB3	1.89	0.55
2:E:188:VAL:HG21	3:F:157:LEU:HD11	1.88	0.55
1:B:529:GLU:N	1:B:529:GLU:OE1	2.38	0.54
1:B:169:GLU:OE1	1:B:169:GLU:N	2.29	0.54
3:D:207:ASP:N	3:D:207:ASP:OD1	2.41	0.54
1:A:2:ALA:HB3	1:A:7:GLU:HG3	1.89	0.54
1:B:627:VAL:O	1:B:631:MET:HG3	2.07	0.54
2:C:41:GLN:HB2	2:C:47:LEU:HD23	1.89	0.54
1:A:1440:GLN:HE21	1:B:553:ARG:NH2	2.06	0.54
2:E:146:GLY:HA3	2:E:188:VAL:HG12	1.88	0.54
1:B:572:MET:HE2	1:B:572:MET:H	1.72	0.54
2:E:127:SER:HB2	2:E:150:LYS:HB3	1.89	0.54
1:A:1440:GLN:OE1	1:A:1441:ALA:N	2.40	0.54
1:A:552:SER:OG	1:A:878:ALA:O	2.26	0.54
1:A:610:ALA:HA	1:A:613:ARG:HB2	1.89	0.54
1:B:334:ILE:O	1:B:363:ARG:NH1	2.31	0.54
1:A:560:PHE:HD2	1:A:649:PRO:HB3	1.71	0.53
1:A:1095:GLU:OE1	1:A:1095:GLU:N	2.42	0.53
1:A:1248:SER:O	1:A:1252:VAL:HG22	2.08	0.53
1:A:1302:ARG:NH1	1:A:1305:ASP:O	2.41	0.53
3:F:53:TYR:HB3	3:F:112:SER:HB2	1.89	0.53
1:A:937:THR:OG1	1:A:938:GLY:N	2.41	0.53
3:D:17:ASP:OD1	3:D:17:ASP:N	2.42	0.53
3:D:203:LEU:HD12	3:D:204:SER:H	1.71	0.53
1:B:528:ASP:OD1	1:B:530:SER:N	2.41	0.53

Continued on next page...

Continued from previous page...

Atom-1	Atom-2	Interatomic distance (Å)	Clash overlap (Å)
2:C:32:GLY:HA2	2:C:56:LYS:HZ3	1.72	0.53
2:C:54:ARG:O	2:C:76:ARG:NH1	2.42	0.53
1:B:104:PHE:HB2	1:B:124:ARG:HD3	1.91	0.53
3:D:34:PRO:HB3	3:D:97:SER:HA	1.89	0.53
1:A:913:LYS:O	1:A:913:LYS:NZ	2.28	0.53
1:B:43:ARG:HG3	1:B:129:LEU:HD21	1.91	0.53
2:E:134:SER:HA	3:F:140:PHE:HE1	1.73	0.53
1:A:788:VAL:O	1:A:812:ARG:NH2	2.31	0.52
1:A:1225:PHE:HE1	1:A:1352:LEU:HD11	1.74	0.52
2:C:207:HIS:O	2:C:213:LYS:NZ	2.43	0.52
1:A:859:ARG:NH1	1:A:862:ASP:OD2	2.42	0.52
1:A:950:LEU:HB3	1:A:1003:VAL:HG22	1.92	0.52
3:F:186:THR:HG22	3:F:196:SER:H	1.74	0.52
1:B:519:PRO:HB3	1:B:553:ARG:HD2	1.91	0.52
1:A:990:LEU:HA	1:A:993:ARG:HE	1.75	0.52
2:C:49:TRP:HZ2	2:C:52:PHE:HB3	1.74	0.52
1:A:241:LEU:HD23	1:A:241:LEU:H	1.75	0.51
1:A:556:GLN:HG3	1:A:881:ALA:HB2	1.92	0.51
2:C:148:LEU:HA	2:C:185:LEU:O	2.11	0.51
3:D:189:ASP:HB2	3:D:194:THR:H	1.75	0.51
3:D:158:LEU:HD22	3:D:158:LEU:H	1.75	0.51
2:E:68:VAL:HB	2:E:72:PHE:CD1	2.45	0.51
3:F:137:VAL:HG11	3:F:218:VAL:HG11	1.92	0.51
1:A:569:TRP:CD1	1:A:570:ALA:H	2.29	0.51
1:A:1108:ALA:O	1:A:1380:ARG:NH2	2.29	0.51
1:A:1273:PHE:CE1	1:A:1348:LEU:HD11	2.45	0.51
2:C:54:ARG:NH1	2:C:63:GLU:OE2	2.42	0.51
1:A:1416:LEU:HA	1:A:1419:LEU:HD23	1.93	0.51
1:B:660:ILE:HD12	1:B:660:ILE:H	1.75	0.51
1:A:569:TRP:CG	1:A:570:ALA:N	2.79	0.51
3:F:147:LEU:HD21	3:F:152:ALA:HA	1.93	0.50
1:A:226:LEU:HD23	1:A:278:GLU:HB2	1.92	0.50
1:B:338:GLU:HA	1:B:338:GLU:OE2	2.12	0.50
1:B:361:ARG:N	1:B:361:ARG:NE	2.59	0.50
1:A:278:GLU:OE1	1:A:279:ARG:N	2.42	0.50
2:C:188:VAL:HG11	3:D:157:LEU:HD21	1.93	0.50
1:A:1024:LEU:HD13	1:A:1067:LEU:HD23	1.93	0.50
1:A:558:ALA:HB2	1:A:880:VAL:HG13	1.93	0.50
1:A:1172:SER:OG	1:A:1198:ALA:O	2.28	0.50
2:E:154:PRO:HD2	2:E:207:HIS:NE2	2.27	0.50
1:A:1366:TRP:O	1:A:1370:LEU:HG	2.11	0.50

Continued on next page...

Continued from previous page...

Atom-1	Atom-2	Interatomic distance (Å)	Clash overlap (Å)
1:B:630:VAL:O	1:B:634:VAL:HG13	2.11	0.50
1:B:645:HIS:CE1	1:B:887:VAL:HG12	2.47	0.50
2:C:162:ASN:HD21	2:C:166:LEU:H	1.58	0.50
1:A:576:LEU:O	1:A:580:SER:OG	2.24	0.50
1:B:119:VAL:O	1:B:124:ARG:NH2	2.44	0.50
1:B:575:ASP:OD1	1:B:575:ASP:N	2.44	0.50
1:A:1448:ASP:N	1:A:1448:ASP:OD1	2.41	0.50
1:B:835:PRO:HB2	1:B:838:THR:OG1	2.12	0.50
1:A:688:MET:N	1:A:689:PRO:HD2	2.27	0.50
1:B:568:GLN:C	1:B:570:ALA:H	2.19	0.50
3:D:187:GLU:OE1	3:D:188:GLN:N	2.45	0.50
2:E:151:ASP:N	2:E:151:ASP:OD1	2.45	0.50
1:A:624:VAL:HA	1:A:627:VAL:HG22	1.93	0.49
1:A:1148:GLY:N	1:A:1171:VAL:O	2.45	0.49
3:F:102:GLU:H	3:F:102:GLU:CD	2.20	0.49
1:A:1249:ARG:HA	1:A:1253:LEU:HD23	1.94	0.49
2:C:14:VAL:HB	2:C:18:ARG:HD2	1.93	0.49
2:E:67:SER:OG	2:E:68:VAL:N	2.45	0.49
2:E:219:GLU:OE1	2:E:220:PRO:HD2	2.13	0.49
1:A:688:MET:N	1:A:688:MET:SD	2.81	0.49
2:C:133:PRO:HB3	2:C:143:ALA:HB3	1.94	0.49
3:D:169:GLN:HB2	3:D:217:GLU:HB2	1.95	0.49
1:A:1224:VAL:HB	1:A:1270:PHE:HA	1.94	0.49
2:C:200:THR:O	2:C:217:LYS:NZ	2.46	0.49
3:D:59:GLN:NE2	3:D:60:LYS:O	2.38	0.49
2:C:158:THR:OG1	2:C:159:VAL:N	2.46	0.49
3:F:203:LEU:HD22	3:F:207:ASP:HB3	1.94	0.49
3:F:223:LEU:HD12	3:F:224:SER:H	1.78	0.49
3:D:160:ASN:HA	3:D:194:THR:HB	1.94	0.49
3:F:223:LEU:HD12	3:F:224:SER:N	2.28	0.49
1:A:1160:LEU:HA	1:A:1163:ARG:HB2	1.95	0.48
2:C:173:PHE:HE2	3:D:198:SER:HB3	1.78	0.48
2:E:36:MET:HE2	2:E:102:ARG:HA	1.95	0.48
1:B:130:SER:HB2	1:B:228:MET:HE1	1.93	0.48
2:E:204:ASN:OD1	2:E:204:ASN:N	2.46	0.48
1:B:870:GLU:OE2	1:B:874:ARG:NH1	2.46	0.48
3:D:22:GLN:NE2	3:D:38:SER:HB3	2.28	0.48
1:A:219:LEU:O	1:A:279:ARG:NH1	2.43	0.48
1:A:1056:PHE:HE2	1:B:76:LEU:HD11	1.79	0.48
1:B:688:MET:SD	1:B:689:PRO:HD3	2.54	0.48
1:B:788:VAL:HG13	1:B:789:THR:HG23	1.95	0.48

Continued on next page...

Continued from previous page...

Atom-1	Atom-2	Interatomic distance (Å)	Clash overlap (Å)
3:F:185:VAL:HG22	3:F:197:LEU:HD12	1.95	0.48
1:A:1254:GLY:O	1:A:1258:LEU:HG	2.13	0.48
3:F:171:LYS:NZ	3:F:178:SER:OG	2.41	0.48
1:A:562:PHE:HB2	1:A:658:GLY:HA3	1.96	0.48
2:C:202:ILE:HG23	2:C:216:LYS:HB3	1.96	0.48
1:A:632:PHE:HD2	1:A:678:VAL:HG21	1.79	0.48
1:B:834:HIS:CD2	1:B:860:ARG:HD2	2.49	0.48
1:B:40:MET:HE3	1:B:291:LEU:HD12	1.96	0.48
1:A:1272:LEU:N	1:A:1310:THR:HB	2.29	0.47
1:A:1273:PHE:CZ	1:A:1348:LEU:HD11	2.48	0.47
1:A:1439:ASP:OD1	1:A:1439:ASP:N	2.38	0.47
2:C:216:LYS:HD2	2:C:218:VAL:HG12	1.96	0.47
1:A:1335:GLY:O	1:A:1365:ARG:N	2.42	0.47
1:B:572:MET:HE2	1:B:572:MET:N	2.29	0.47
1:B:601:GLU:HG3	1:B:603:ILE:HG12	1.95	0.47
2:E:128:VAL:HG12	2:E:130:PRO:HD3	1.96	0.47
1:B:57:LEU:HB2	1:B:62:ARG:HH21	1.79	0.47
3:D:142:PRO:HG2	3:D:152:ALA:HA	1.97	0.47
3:D:152:ALA:HB3	3:D:203:LEU:HD23	1.95	0.47
1:A:672:ASP:OD1	1:A:676:ARG:NH1	2.47	0.47
1:B:602:VAL:HA	1:B:606:LEU:HD13	1.97	0.47
2:E:159:VAL:HG23	2:E:205:VAL:HG12	1.97	0.47
3:D:139:ILE:HB	3:D:156:CYS:SG	2.55	0.47
2:E:33:ASP:OD1	2:E:33:ASP:N	2.47	0.47
1:A:543:ASN:OD1	1:A:543:ASN:N	2.48	0.47
1:A:577:LEU:HD23	1:A:577:LEU:H	1.78	0.47
3:F:110:MET:HE1	3:F:117:ARG:HH11	1.79	0.47
1:A:1331:PHE:O	1:A:1336:VAL:HG12	2.14	0.47
1:A:1468:PRO:O	1:A:1471:THR:OG1	2.31	0.47
1:A:1306:GLY:C	1:B:82:PRO:HG2	2.40	0.47
3:D:135:PRO:HB3	3:D:161:PHE:HB3	1.97	0.47
2:E:153:PHE:HB3	2:E:154:PRO:HD3	1.96	0.47
1:A:1421:ARG:HH21	1:A:1434:GLU:HA	1.80	0.46
1:B:209:LEU:O	1:B:212:VAL:HG22	2.14	0.46
3:F:164:ARG:HB3	3:F:195:TYR:CE2	2.50	0.46
2:C:162:ASN:HD22	2:C:165:ALA:HB3	1.79	0.46
1:A:166:GLU:N	1:A:166:GLU:OE1	2.49	0.46
1:A:1168:LEU:HD12	1:A:1168:LEU:HA	1.81	0.46
1:B:859:ARG:HB2	1:B:862:ASP:HB3	1.97	0.46
1:A:952:ALA:HB2	1:A:979:LEU:HB3	1.97	0.46
1:A:1012:ALA:HA	1:A:1060:ARG:HH21	1.79	0.46

Continued on next page...

Continued from previous page...

Atom-1	Atom-2	Interatomic distance (Å)	Clash overlap (Å)
1:A:169:GLU:CD	1:A:169:GLU:H	2.24	0.46
1:A:619:LEU:H	1:A:623:ARG:HD2	1.79	0.46
1:A:859:ARG:NH1	1:A:867:ASP:HB3	2.30	0.46
1:A:1148:GLY:HA3	1:A:1172:SER:HB3	1.96	0.46
1:A:1489:LEU:H	1:A:1489:LEU:HD23	1.79	0.46
1:B:815:ASP:OD1	1:B:815:ASP:N	2.46	0.46
2:C:128:VAL:O	2:C:129:PHE:HD1	1.98	0.46
3:F:19:VAL:HG12	3:F:43:GLN:HB3	1.98	0.46
1:B:856:HIS:ND1	1:B:858:LEU:O	2.49	0.46
3:F:171:LYS:HD3	3:F:171:LYS:HA	1.78	0.46
1:A:600:PHE:HE2	1:A:605:PHE:HB2	1.81	0.46
1:A:1043:LEU:O	1:A:1083:GLY:N	2.48	0.46
1:A:1061:ASN:HD21	1:A:1064:HIS:CD2	2.34	0.46
1:A:1231:LEU:HD13	1:A:1322:MET:HB3	1.96	0.46
1:A:660:ILE:HD13	1:A:678:VAL:HG12	1.98	0.45
2:C:92:THR:HA	2:C:118:VAL:HG11	1.99	0.45
3:F:88:SER:OG	3:F:89:GLY:N	2.48	0.45
1:A:1272:LEU:HB3	1:A:1310:THR:O	2.16	0.45
2:C:128:VAL:O	2:C:129:PHE:CD1	2.69	0.45
1:A:1048:GLU:HB3	1:A:1060:ARG:HH12	1.81	0.45
1:A:1175:GLY:HA3	1:A:1199:ALA:HA	1.99	0.45
1:B:826:ARG:NH1	1:B:850:ALA:H	2.15	0.45
1:B:157:PRO:O	1:B:158:GLN:HG2	2.15	0.45
1:B:494:ALA:O	1:B:498:GLU:HG2	2.17	0.45
2:C:118:VAL:HG22	2:C:119:SER:H	1.81	0.45
1:A:1180:GLY:O	1:A:1184:LEU:HB3	2.15	0.45
1:B:423:LEU:HD12	1:B:423:LEU:HA	1.86	0.45
1:A:990:LEU:HD23	1:A:990:LEU:H	1.81	0.45
1:A:1226:HIS:HB2	1:A:1273:PHE:H	1.82	0.45
1:A:1466:ARG:HE	1:A:1467:LEU:H	1.65	0.45
3:D:170:TRP:HA	3:D:215:ALA:O	2.17	0.45
1:A:789:THR:HG22	1:A:809:ARG:HH22	1.81	0.45
1:A:1061:ASN:OD1	1:A:1063:ALA:N	2.50	0.45
1:B:834:HIS:NE2	1:B:860:ARG:HA	2.32	0.45
1:B:838:THR:HG23	1:B:854:ALA:HB3	1.99	0.45
1:A:121:PRO:HA	1:A:124:ARG:HG2	1.99	0.45
1:A:1048:GLU:HB3	1:A:1060:ARG:NH1	2.31	0.45
1:B:209:LEU:HD23	1:B:209:LEU:HA	1.84	0.45
1:B:594:LEU:HD21	1:B:629:PRO:HB2	1.98	0.45
1:B:627:VAL:O	1:B:630:VAL:HG22	2.16	0.45
1:B:839:ALA:HA	1:B:842:GLU:HB2	1.99	0.45

Continued on next page...

Continued from previous page...

Atom-1	Atom-2	Interatomic distance (Å)	Clash overlap (Å)
1:A:557:ARG:O	1:A:557:ARG:HG2	2.17	0.45
1:A:1155:GLN:OE1	1:A:1158:ARG:NH1	2.50	0.45
1:A:1460:GLY:O	1:A:1464:GLY:N	2.37	0.45
1:A:609:GLU:O	1:A:613:ARG:N	2.49	0.45
1:A:682:SER:O	1:A:686:ALA:HB2	2.17	0.45
1:A:1314:TRP:CZ2	1:A:1348:LEU:HD13	2.52	0.45
1:A:1352:LEU:HD13	1:A:1352:LEU:HA	1.82	0.45
1:B:35:VAL:HG22	1:B:294:LEU:HB2	1.99	0.45
2:C:161:TRP:CZ2	2:C:203:CYS:HB2	2.52	0.45
3:D:200:THR:OG1	3:D:201:LEU:N	2.50	0.44
1:A:1141:GLY:H	1:A:1166:PRO:HD2	1.81	0.44
2:C:38:TRP:CD1	2:C:85:LEU:HD13	2.52	0.44
1:A:40:MET:HB3	1:A:275:LEU:HD23	1.99	0.44
1:B:268:MET:HB3	1:B:380:GLN:HE22	1.83	0.44
1:B:652:VAL:HG12	1:B:654:GLY:H	1.81	0.44
2:C:147:CYS:HB2	2:C:187:SER:HB3	1.99	0.44
3:D:145:GLU:O	3:D:148:LYS:HB3	2.16	0.44
3:D:197:LEU:HD12	3:D:198:SER:N	2.32	0.44
2:E:129:PHE:CD1	3:F:146:GLN:HB2	2.52	0.44
1:A:25:GLN:OE1	1:A:28:ARG:NH1	2.51	0.44
1:B:638:LEU:O	1:B:641:MET:HG3	2.18	0.44
3:D:190:SER:OG	3:D:191:LYS:N	2.50	0.44
1:A:155:LEU:HD23	1:A:155:LEU:HA	1.81	0.44
1:A:1383:ASP:OD1	1:A:1383:ASP:N	2.49	0.44
1:B:344:THR:HG23	1:B:347:GLY:H	1.83	0.44
3:F:69:ILE:HG23	3:F:74:ASN:H	1.82	0.44
1:A:915:VAL:O	1:A:918:ARG:NE	2.51	0.44
2:E:49:TRP:CZ3	2:E:65:ALA:HB2	2.53	0.44
1:B:800:ALA:HA	1:B:803:TRP:CD1	2.52	0.44
2:C:31:PHE:O	2:C:56:LYS:NZ	2.51	0.44
1:A:119:VAL:O	1:A:124:ARG:NH2	2.50	0.44
2:C:64:TYR:HE1	2:C:74:ILE:HG13	1.83	0.44
2:C:162:ASN:ND2	2:C:165:ALA:HB3	2.33	0.44
1:A:1205:ARG:HH22	1:A:1260:GLU:HG2	1.83	0.43
1:B:291:LEU:HD22	1:B:396:ARG:HH22	1.82	0.43
1:A:1026:ASP:O	1:A:1029:SER:OG	2.28	0.43
1:A:1043:LEU:HD12	1:A:1044:TRP:N	2.33	0.43
1:B:512:ALA:O	1:B:513:THR:C	2.61	0.43
3:D:169:GLN:O	3:D:216:CYS:HA	2.18	0.43
3:D:186:THR:OG1	3:D:187:GLU:N	2.51	0.43
2:E:133:PRO:O	2:E:134:SER:C	2.61	0.43

Continued on next page...

Continued from previous page...

Atom-1	Atom-2	Interatomic distance (Å)	Clash overlap (Å)
1:A:294:LEU:HD23	1:A:454:ILE:HG22	1.99	0.43
1:A:1149:THR:OG1	1:A:1180:GLY:N	2.51	0.43
1:B:44:LEU:HD12	1:B:376:LEU:HD13	2.00	0.43
1:B:598:LEU:HD23	1:B:598:LEU:HA	1.87	0.43
2:C:173:PHE:CD1	2:C:173:PHE:N	2.85	0.43
2:E:155:GLU:HA	2:E:155:GLU:OE2	2.19	0.43
3:F:188:GLN:C	3:F:190:SER:H	2.25	0.43
1:A:588:ARG:NH2	1:A:603:ILE:HG12	2.34	0.43
1:A:930:TYR:HB3	1:A:1125:TRP:HE1	1.84	0.43
1:B:72:ARG:NH1	1:B:235:MET:O	2.50	0.43
1:A:555:GLN:HB3	1:A:557:ARG:CZ	2.49	0.43
1:B:561:VAL:HG12	1:B:653:ILE:HG22	2.01	0.43
2:E:213:LYS:H	2:E:213:LYS:HG3	1.64	0.43
1:B:663:ALA:HB1	1:B:668:ALA:HB3	2.00	0.43
2:C:64:TYR:HB2	2:C:69:LYS:HZ3	1.83	0.43
2:E:14:VAL:HG23	2:E:118:VAL:HG22	1.99	0.43
2:E:49:TRP:HZ2	2:E:52:PHE:HD1	1.67	0.43
1:A:975:ARG:NH1	1:A:976:VAL:O	2.44	0.43
1:A:1016:GLU:CD	1:A:1016:GLU:H	2.26	0.43
1:A:1331:PHE:HA	1:A:1334:HIS:CE1	2.54	0.43
1:B:360:GLY:HA3	1:B:361:ARG:HH21	1.83	0.43
2:C:131:LEU:HB2	3:D:145:GLU:OE2	2.18	0.43
2:E:207:HIS:HD2	2:E:209:PRO:HD2	1.83	0.43
3:F:146:GLN:HA	3:F:148:LYS:HE2	1.99	0.43
1:B:675:ALA:O	1:B:678:VAL:HG12	2.19	0.43
1:B:680:LEU:HA	1:B:683:ARG:NE	2.34	0.43
2:E:163:SER:HA	2:E:204:ASN:HD21	1.84	0.43
3:F:158:LEU:HD21	3:F:218:VAL:HG21	2.01	0.43
3:F:167:LYS:HE3	3:F:167:LYS:HB3	1.88	0.43
3:D:150:GLY:HA3	3:D:205:LYS:HG3	2.01	0.43
3:F:220:HIS:HB3	3:F:223:LEU:HD23	2.00	0.43
1:B:134:LEU:HD23	1:B:134:LEU:HA	1.75	0.42
1:B:567:TRP:CE3	1:B:832:SER:HA	2.53	0.42
2:C:207:HIS:CD2	2:C:209:PRO:HD2	2.54	0.42
2:E:208:LYS:HD2	2:E:208:LYS:HA	1.85	0.42
1:A:40:MET:HB3	1:A:40:MET:HE2	1.85	0.42
1:A:165:ALA:HA	1:B:242:VAL:HG11	2.00	0.42
1:B:2:ALA:HB3	3:F:115:THR:HG21	2.00	0.42
1:B:676:ARG:O	1:B:680:LEU:HG	2.18	0.42
1:B:682:SER:HA	1:B:685:ILE:HG22	2.01	0.42
1:A:944:ARG:HD2	1:A:973:GLY:HA3	2.01	0.42

Continued on next page...

Continued from previous page...

Atom-1	Atom-2	Interatomic distance (Å)	Clash overlap (Å)
1:A:1339:MET:HA	1:A:1340:PRO:HD3	1.91	0.42
1:B:218:SER:HB2	1:B:223:GLU:HG2	2.01	0.42
3:D:162:TYR:HB3	3:D:163:PRO:HD3	2.02	0.42
1:B:531:ALA:O	1:B:535:VAL:HG13	2.18	0.42
1:A:859:ARG:HD2	1:A:862:ASP:HB3	2.01	0.42
1:B:583:PHE:CZ	1:B:641:MET:HG2	2.54	0.42
1:A:1174:SER:HB3	1:A:1177:ASP:HB3	2.02	0.42
1:A:1226:HIS:HB3	1:A:1295:LEU:HD13	2.02	0.42
1:B:90:ALA:C	1:B:91:HIS:HD1	2.27	0.42
3:F:103:ASP:OD1	3:F:103:ASP:N	2.53	0.42
1:A:826:ARG:HH21	1:A:852:LEU:HD22	1.85	0.42
1:A:930:TYR:CZ	1:A:1366:TRP:HH2	2.37	0.42
1:A:1270:PHE:CG	1:A:1302:ARG:HG2	2.55	0.42
1:A:618:ALA:HA	1:A:623:ARG:HD2	2.02	0.42
1:A:1146:THR:HA	1:A:1171:VAL:HG22	2.01	0.42
1:A:1265:LEU:HA	1:A:1265:LEU:HD23	1.79	0.42
1:B:342:THR:HG23	1:B:344:THR:HG22	2.02	0.42
2:E:80:LYS:HB2	2:E:82:ILE:HG12	2.00	0.42
1:A:564:GLY:HA3	1:A:655:HIS:ND1	2.34	0.42
1:A:631:MET:O	1:A:635:MET:SD	2.78	0.42
1:B:570:ALA:HB3	1:B:572:MET:CE	2.50	0.42
3:F:54:LEU:HD22	3:F:92:PHE:CG	2.55	0.42
1:A:1408:PRO:HD2	1:A:1412:ARG:HB3	2.01	0.41
1:B:437:ARG:HG3	1:B:455:GLU:HG3	2.02	0.41
3:D:103:ASP:OD1	3:D:103:ASP:N	2.52	0.41
3:D:188:GLN:HG3	3:D:195:TYR:CE2	2.55	0.41
1:A:1358:CYS:N	1:A:1359:PRO:HD3	2.34	0.41
1:B:856:HIS:CE1	1:B:859:ARG:HG2	2.55	0.41
2:C:176:VAL:HG12	2:C:184:SER:O	2.20	0.41
2:E:37:SER:OG	2:E:101:THR:OG1	2.27	0.41
2:E:178:GLN:HE22	2:E:184:SER:HB3	1.85	0.41
2:E:183:TYR:N	2:E:183:TYR:CD1	2.88	0.41
3:F:148:LYS:HE2	3:F:148:LYS:HB2	1.87	0.41
1:A:1334:HIS:O	1:A:1334:HIS:ND1	2.51	0.41
1:B:669:LEU:HD21	1:B:676:ARG:NH2	2.35	0.41
2:C:143:ALA:HB2	2:C:190:THR:H	1.85	0.41
3:D:197:LEU:HD12	3:D:198:SER:H	1.85	0.41
1:A:825:TYR:C	1:A:826:ARG:HD2	2.45	0.41
2:C:149:VAL:C	2:C:184:SER:HB2	2.45	0.41
1:A:588:ARG:HA	1:A:588:ARG:NE	2.35	0.41
2:C:77:ASP:O	2:C:81:SER:CA	2.66	0.41

Continued on next page...

Continued from previous page...

Atom-1	Atom-2	Interatomic distance (Å)	Clash overlap (Å)
3:F:189:ASP:OD2	3:F:192:ASP:HB3	2.21	0.41
1:B:623:ARG:O	1:B:627:VAL:HG22	2.20	0.41
1:A:1225:PHE:HB3	1:A:1273:PHE:CE2	2.56	0.41
3:D:181:SER:OG	3:D:182:GLN:N	2.54	0.41
1:B:322:GLN:HG2	1:B:326:GLU:OE1	2.21	0.41
3:D:22:GLN:NE2	3:D:38:SER:O	2.43	0.41
1:A:961:THR:OG1	1:A:1006:LEU:HD21	2.21	0.41
1:A:1217:ASP:O	1:A:1219:VAL:N	2.50	0.41
1:A:1276:PHE:HB3	1:A:1315:GLY:HA2	2.02	0.41
1:B:149:THR:HG23	1:B:226:LEU:HB3	2.02	0.41
1:B:232:VAL:HG23	1:B:272:ALA:HB2	2.03	0.41
1:B:316:GLN:O	1:B:319:VAL:HG12	2.21	0.41
3:D:147:LEU:HD23	3:D:151:THR:HG23	2.02	0.41
3:D:189:ASP:HB3	3:D:192:ASP:HB3	2.03	0.41
2:E:17:GLY:HA2	2:E:89:SER:HA	2.02	0.41
2:E:207:HIS:CD2	2:E:209:PRO:HD2	2.56	0.41
3:F:25:LEU:HB3	3:F:26:SER:H	1.76	0.41
1:A:80:PHE:HB2	1:A:93:ARG:HH22	1.85	0.41
1:B:40:MET:HE1	1:B:392:VAL:HG11	2.02	0.41
1:B:632:PHE:HE1	1:B:661:ALA:HA	1.85	0.41
2:C:48:GLU:HA	3:D:119:THR:HA	2.03	0.41
2:E:40:ARG:HB2	2:E:98:TYR:CE1	2.56	0.41
1:A:931:ARG:HG3	1:A:1358:CYS:HB3	2.03	0.40
1:A:1249:ARG:O	1:A:1253:LEU:HD23	2.22	0.40
2:C:75:SER:OG	2:C:84:TYR:HB2	2.21	0.40
1:A:134:LEU:HD12	1:A:134:LEU:HA	1.84	0.40
1:A:266:PHE:HZ	1:A:1449:4HH:HT2	1.86	0.40
1:A:584:ALA:O	1:A:588:ARG:HG2	2.22	0.40
1:A:625:ASP:N	1:A:625:ASP:OD1	2.53	0.40
1:A:852:LEU:H	1:A:852:LEU:HD23	1.86	0.40
1:A:930:TYR:OH	1:A:1127:ARG:NH1	2.54	0.40
1:A:1309:ALA:O	1:A:1357:VAL:HA	2.21	0.40
1:B:81:HIS:O	1:B:83:ASP:N	2.54	0.40
1:B:640:SER:HA	1:B:643:ARG:HG2	2.02	0.40
3:F:191:LYS:HE3	3:F:191:LYS:HB3	1.95	0.40
1:A:1261:LEU:HD23	1:A:1261:LEU:HA	1.93	0.40
1:A:1449:4HH:HL3	1:A:1449:4HH:HO2	1.79	0.40
1:A:1466:ARG:HE	1:A:1467:LEU:N	2.19	0.40
1:B:204:ALA:O	1:B:207:SER:OG	2.35	0.40
3:D:96:ILE:HG22	3:D:97:SER:H	1.87	0.40
1:A:560:PHE:HB3	1:A:652:VAL:HG12	2.03	0.40

Continued on next page...

Continued from previous page...

Atom-1	Atom-2	Interatomic distance (Å)	Clash overlap (Å)
1:A:1303:ARG:HG2	1:A:1308:PRO:HA	2.04	0.40
1:B:79:LEU:HA	1:B:79:LEU:HD23	1.85	0.40
1:B:120:ASP:OD1	1:B:121:PRO:HD2	2.20	0.40
1:B:126:MET:HB3	1:B:188:ILE:HD11	2.03	0.40
3:D:188:GLN:NE2	3:D:193:SER:HB2	2.31	0.40
1:B:674:ALA:O	1:B:677:VAL:HG12	2.22	0.40
3:D:70:TYR:O	3:D:74:ASN:HB2	2.21	0.40
2:E:150:LYS:HD3	2:E:150:LYS:HA	1.87	0.40
2:E:162:ASN:HD22	2:E:201:TYR:HB3	1.86	0.40

There are no symmetry-related clashes.

5.3 Torsion angles [i](#)

5.3.1 Protein backbone [i](#)

In the following table, the Percentiles column shows the percent Ramachandran outliers of the chain as a percentile score with respect to all PDB entries followed by that with respect to all EM entries.

The Analysed column shows the number of residues for which the backbone conformation was analysed, and the total number of residues.

Mol	Chain	Analysed	Favoured	Allowed	Outliers	Percentiles	
1	A	1361/1784 (76%)	1258 (92%)	101 (7%)	2 (0%)	48	79
1	B	792/1784 (44%)	744 (94%)	46 (6%)	2 (0%)	37	67
2	C	199/249 (80%)	162 (81%)	37 (19%)	0	100	100
2	E	199/249 (80%)	178 (89%)	17 (8%)	4 (2%)	6	33
3	D	200/236 (85%)	173 (86%)	27 (14%)	0	100	100
3	F	200/236 (85%)	164 (82%)	35 (18%)	1 (0%)	25	59
All	All	2951/4538 (65%)	2679 (91%)	263 (9%)	9 (0%)	38	67

All (9) Ramachandran outliers are listed below:

Mol	Chain	Res	Type
1	A	1100	LEU
1	B	570	ALA
2	E	67	SER

Continued on next page...

Continued from previous page...

Mol	Chain	Res	Type
2	E	116	VAL
1	A	1233	ASP
2	E	128	VAL
1	B	608	ALA
2	E	7	VAL
3	F	148	LYS

5.3.2 Protein sidechains ⓘ

In the following table, the Percentiles column shows the percent sidechain outliers of the chain as a percentile score with respect to all PDB entries followed by that with respect to all EM entries.

The Analysed column shows the number of residues for which the sidechain conformation was analysed, and the total number of residues.

Mol	Chain	Analysed	Rotameric	Outliers	Percentiles	
1	A	1007/1324 (76%)	984 (98%)	23 (2%)	45	68
1	B	591/1324 (45%)	572 (97%)	19 (3%)	34	61
2	C	170/203 (84%)	163 (96%)	7 (4%)	26	54
2	E	170/203 (84%)	167 (98%)	3 (2%)	54	74
3	D	182/208 (88%)	178 (98%)	4 (2%)	47	69
3	F	182/208 (88%)	174 (96%)	8 (4%)	24	53
All	All	2302/3470 (66%)	2238 (97%)	64 (3%)	40	63

All (64) residues with a non-rotameric sidechain are listed below:

Mol	Chain	Res	Type
1	A	5	ASP
1	A	98	LEU
1	A	466	VAL
1	A	560	PHE
1	A	655	HIS
1	A	788	VAL
1	A	811	VAL
1	A	827	THR
1	A	831	VAL
1	A	923	ASP
1	A	937	THR
1	A	1046	VAL

Continued on next page...

Continued from previous page...

Mol	Chain	Res	Type
1	A	1048	GLU
1	A	1085	LEU
1	A	1099	HIS
1	A	1133	THR
1	A	1149	THR
1	A	1177	ASP
1	A	1221	LEU
1	A	1314	TRP
1	A	1352	LEU
1	A	1364	VAL
1	A	1467	LEU
1	B	35	VAL
1	B	57	LEU
1	B	71	ASP
1	B	80	PHE
1	B	85	THR
1	B	155	LEU
1	B	212	VAL
1	B	306	ASN
1	B	340	HIS
1	B	342	THR
1	B	422	LEU
1	B	427	GLU
1	B	506	ASP
1	B	518	LEU
1	B	597	HIS
1	B	630	VAL
1	B	645	HIS
1	B	647	VAL
1	B	678	VAL
2	C	9	SER
2	C	47	LEU
2	C	52	PHE
2	C	97	VAL
2	C	114	THR
2	C	128	VAL
2	C	152	TYR
3	D	96	ILE
3	D	130	ARG
3	D	155	VAL
3	D	157	LEU
2	E	33	ASP

Continued on next page...

Continued from previous page...

Mol	Chain	Res	Type
2	E	215	ASP
2	E	218	VAL
3	F	25	LEU
3	F	55	ASP
3	F	90	THR
3	F	151	THR
3	F	191	LYS
3	F	217	GLU
3	F	223	LEU
3	F	228	THR

Sometimes sidechains can be flipped to improve hydrogen bonding and reduce clashes. All (15) such sidechains are listed below:

Mol	Chain	Res	Type
1	A	217	GLN
1	A	300	ASN
1	A	365	GLN
1	A	628	GLN
1	A	1064	HIS
1	A	1301	GLN
1	B	123	GLN
1	B	264	ASN
1	B	316	GLN
1	B	340	HIS
1	B	499	HIS
1	B	520	HIS
2	C	162	ASN
3	D	160	ASN
3	D	188	GLN

5.3.3 RNA ⓘ

There are no RNA molecules in this entry.

5.4 Non-standard residues in protein, DNA, RNA chains ⓘ

1 non-standard protein/DNA/RNA residue is modelled in this entry.

In the following table, the Counts columns list the number of bonds (or angles) for which Mogul statistics could be retrieved, the number of bonds (or angles) that are observed in the model and the number of bonds (or angles) that are defined in the Chemical Component Dictionary. The

Link column lists molecule types, if any, to which the group is linked. The Z score for a bond length (or angle) is the number of standard deviations the observed value is removed from the expected value. A bond length (or angle) with $|Z| > 2$ is considered an outlier worth inspection. RMSZ is the root-mean-square of all Z scores of the bond lengths (or angles).

Mol	Type	Chain	Res	Link	Bond lengths			Bond angles		
					Counts	RMSZ	$\# Z > 2$	Counts	RMSZ	$\# Z > 2$
1	4HH	A	1449	1	22,26,27	1.22	1 (4%)	27,35,37	0.98	2 (7%)

In the following table, the Chirals column lists the number of chiral outliers, the number of chiral centers analysed, the number of these observed in the model and the number defined in the Chemical Component Dictionary. Similar counts are reported in the Torsions and Rings columns. '-' means no outliers of that kind were identified.

Mol	Type	Chain	Res	Link	Chirals	Torsions	Rings
1	4HH	A	1449	1	-	18/33/35/37	-

All (1) bond length outliers are listed below:

Mol	Chain	Res	Type	Atoms	Z	Observed(Å)	Ideal(Å)
1	A	1449	4HH	CL3-NN	2.28	1.39	1.33

All (2) bond angle outliers are listed below:

Mol	Chain	Res	Type	Atoms	Z	Observed(°)	Ideal(°)
1	A	1449	4HH	OG-CB-CA	2.59	110.67	108.14
1	A	1449	4HH	O1P-P-O2P	2.21	122.74	112.44

There are no chirality outliers.

All (18) torsion outliers are listed below:

Mol	Chain	Res	Type	Atoms
1	A	1449	4HH	C-CA-CB-OG
1	A	1449	4HH	N-CA-CB-OG
1	A	1449	4HH	CB-OG-P-O1P
1	A	1449	4HH	O3P-CJ-CK-CL1
1	A	1449	4HH	O3P-CJ-CK-CL2
1	A	1449	4HH	O3P-CJ-CK-CM
1	A	1449	4HH	CM-CL3-NN-CO
1	A	1449	4HH	CJ-O3P-P-OG
1	A	1449	4HH	NN-CO-CP-CQ
1	A	1449	4HH	ON-CL3-NN-CO
1	A	1449	4HH	ON-CL3-CM-OM

Continued on next page...

Continued from previous page...

Mol	Chain	Res	Type	Atoms
1	A	1449	4HH	CJ-CK-CM-CL3
1	A	1449	4HH	NR-CS-CT-SU
1	A	1449	4HH	CJ-O3P-P-O2P
1	A	1449	4HH	NN-CL3-CM-OM
1	A	1449	4HH	CL2-CK-CM-CL3
1	A	1449	4HH	CL2-CK-CM-OM
1	A	1449	4HH	CK-CJ-O3P-P

There are no ring outliers.

1 monomer is involved in 2 short contacts:

Mol	Chain	Res	Type	Clashes	Symm-Clashes
1	A	1449	4HH	2	0

5.5 Carbohydrates [i](#)

There are no oligosaccharides in this entry.

5.6 Ligand geometry [i](#)

There are no ligands in this entry.

5.7 Other polymers [i](#)

There are no such residues in this entry.

5.8 Polymer linkage issues [i](#)

There are no chain breaks in this entry.

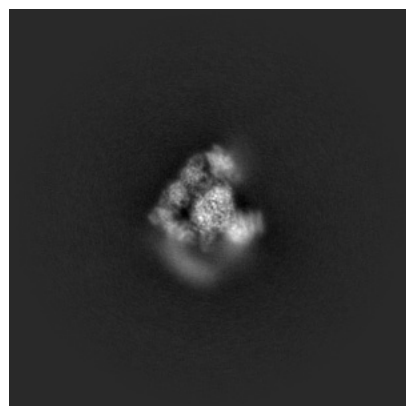
6 Map visualisation [i](#)

This section contains visualisations of the EMDB entry EMD-41306. These allow visual inspection of the internal detail of the map and identification of artifacts.

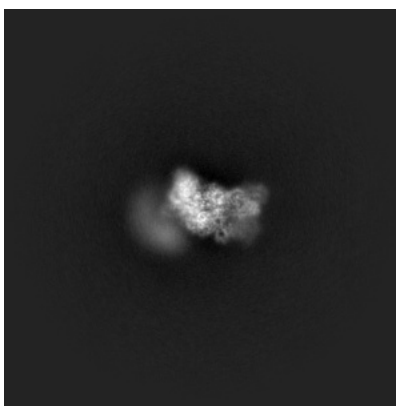
Images derived from a raw map, generated by summing the deposited half-maps, are presented below the corresponding image components of the primary map to allow further visual inspection and comparison with those of the primary map.

6.1 Orthogonal projections [i](#)

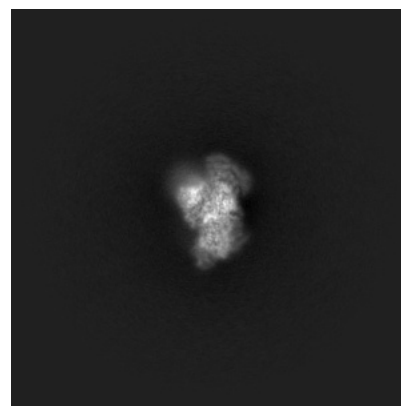
6.1.1 Primary map



X

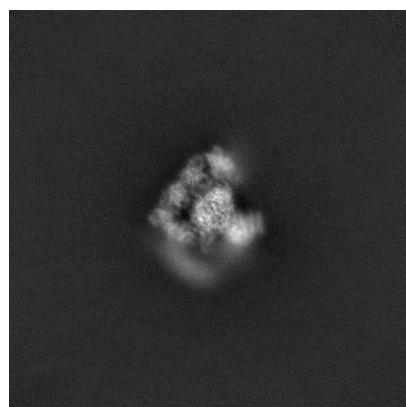


Y

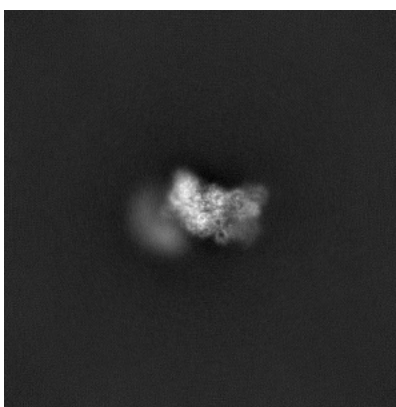


Z

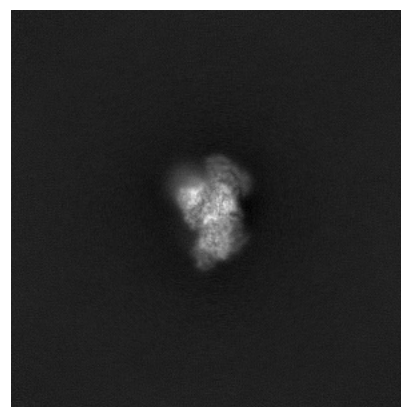
6.1.2 Raw map



X



Y

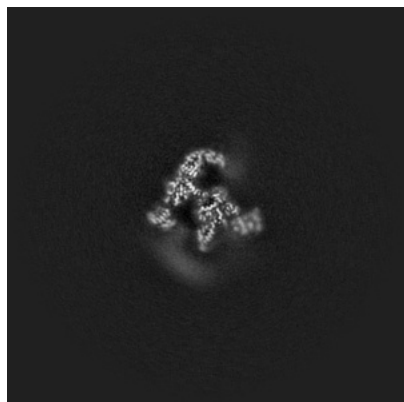


Z

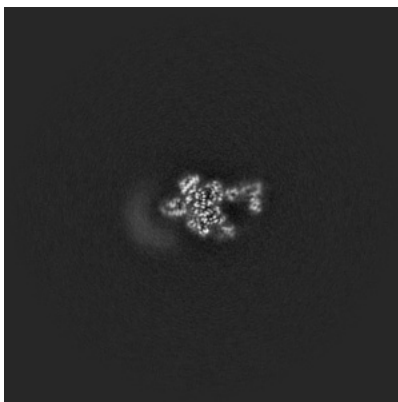
The images above show the map projected in three orthogonal directions.

6.2 Central slices [i](#)

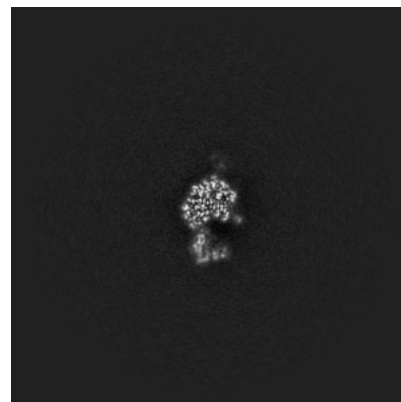
6.2.1 Primary map



X Index: 256

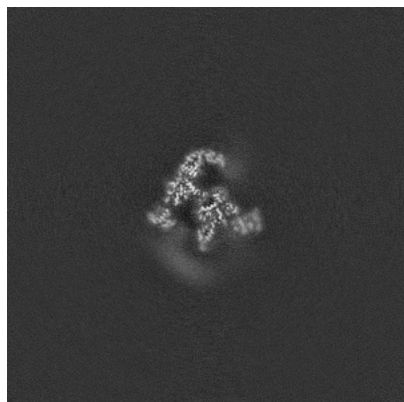


Y Index: 256

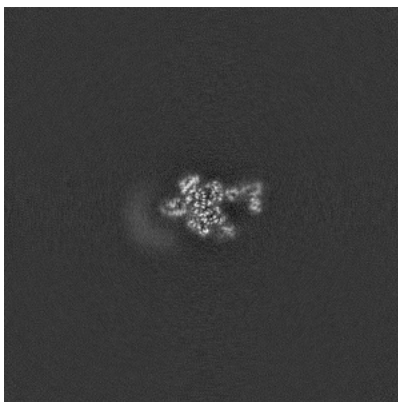


Z Index: 256

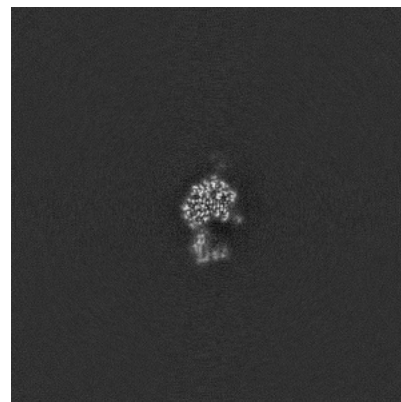
6.2.2 Raw map



X Index: 256



Y Index: 256

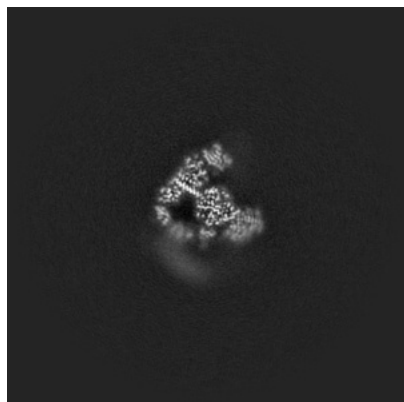


Z Index: 256

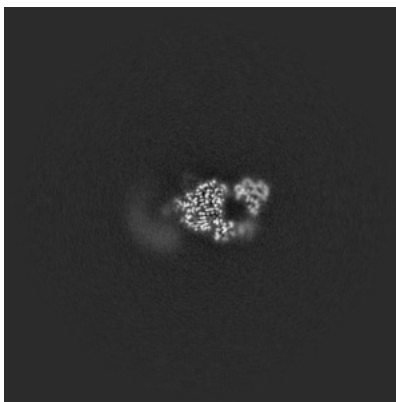
The images above show central slices of the map in three orthogonal directions.

6.3 Largest variance slices [i](#)

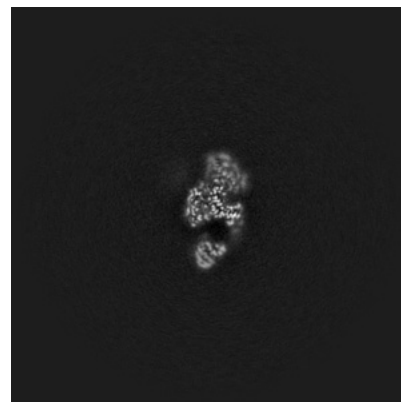
6.3.1 Primary map



X Index: 264

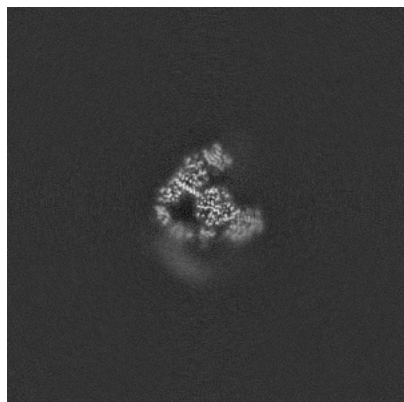


Y Index: 264

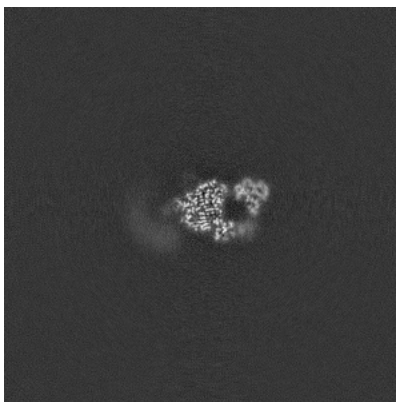


Z Index: 244

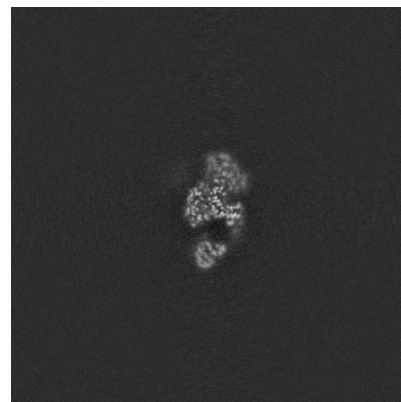
6.3.2 Raw map



X Index: 264



Y Index: 264

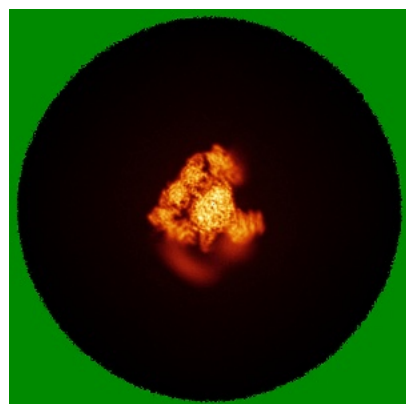


Z Index: 244

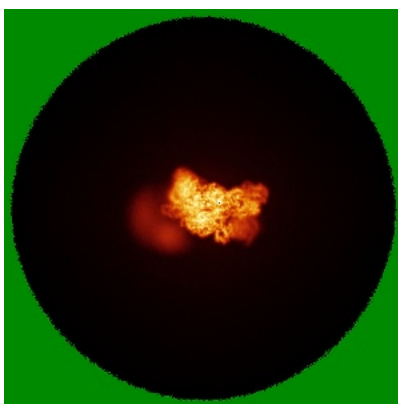
The images above show the largest variance slices of the map in three orthogonal directions.

6.4 Orthogonal standard-deviation projections (False-color) [i](#)

6.4.1 Primary map



X

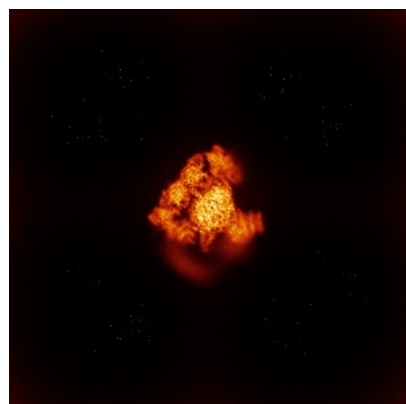


Y

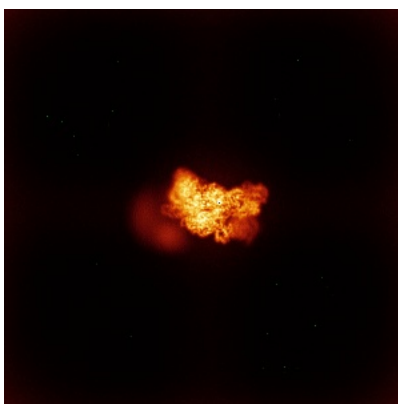


Z

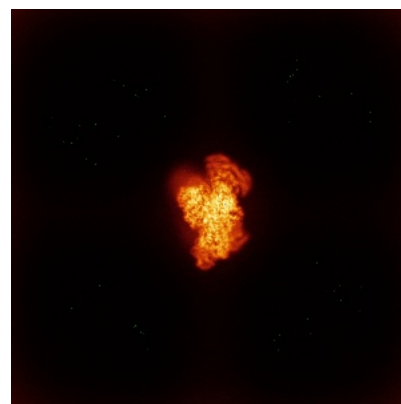
6.4.2 Raw map



X



Y

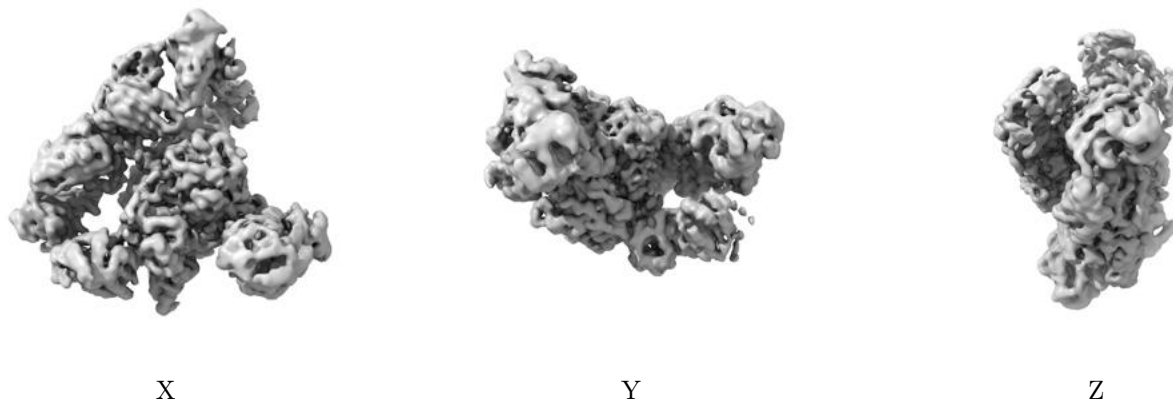


Z

The images above show the map standard deviation projections with false color in three orthogonal directions. Minimum values are shown in green, max in blue, and dark to light orange shades represent small to large values respectively.

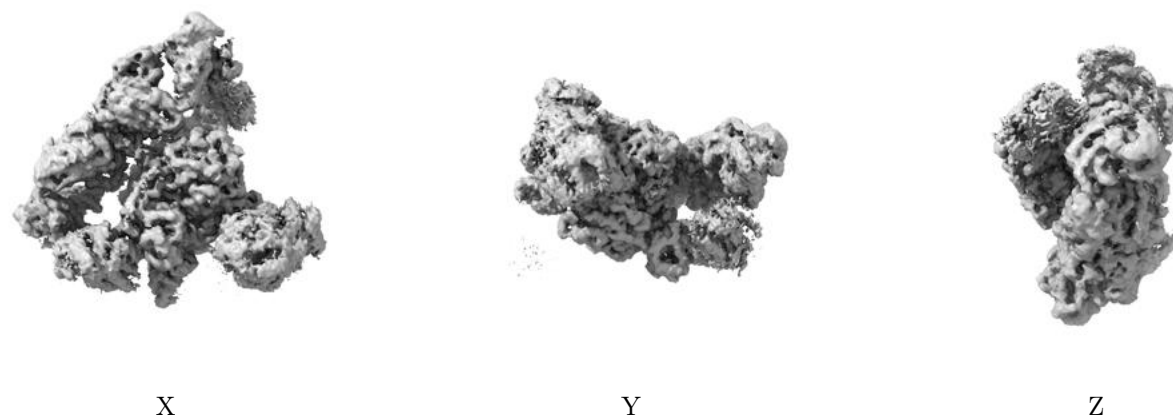
6.5 Orthogonal surface views [i](#)

6.5.1 Primary map



The images above show the 3D surface view of the map at the recommended contour level 0.416. These images, in conjunction with the slice images, may facilitate assessment of whether an appropriate contour level has been provided.

6.5.2 Raw map



These images show the 3D surface of the raw map. The raw map's contour level was selected so that its surface encloses the same volume as the primary map does at its recommended contour level.

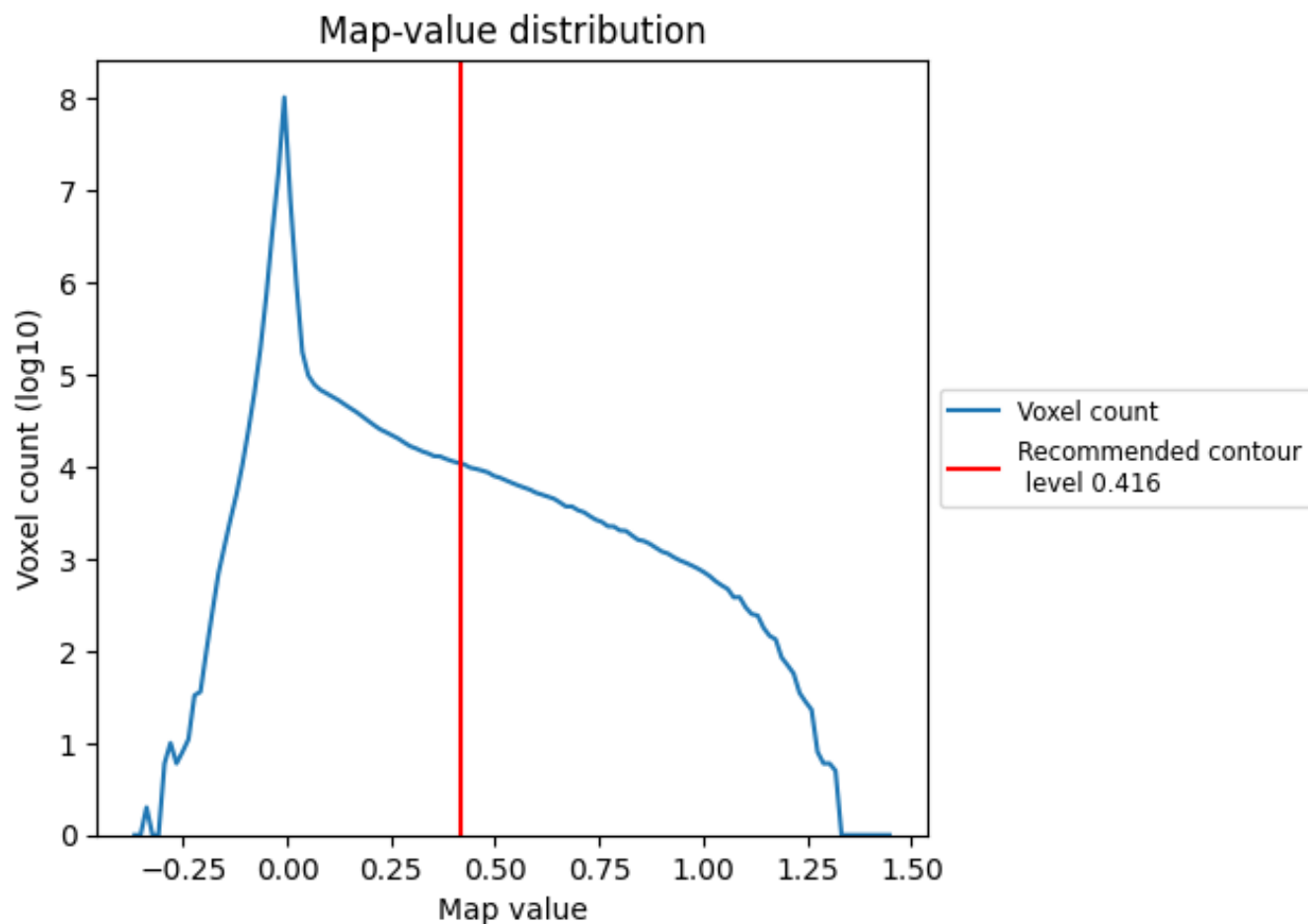
6.6 Mask visualisation [i](#)

This section was not generated. No masks/segmentation were deposited.

7 Map analysis [i](#)

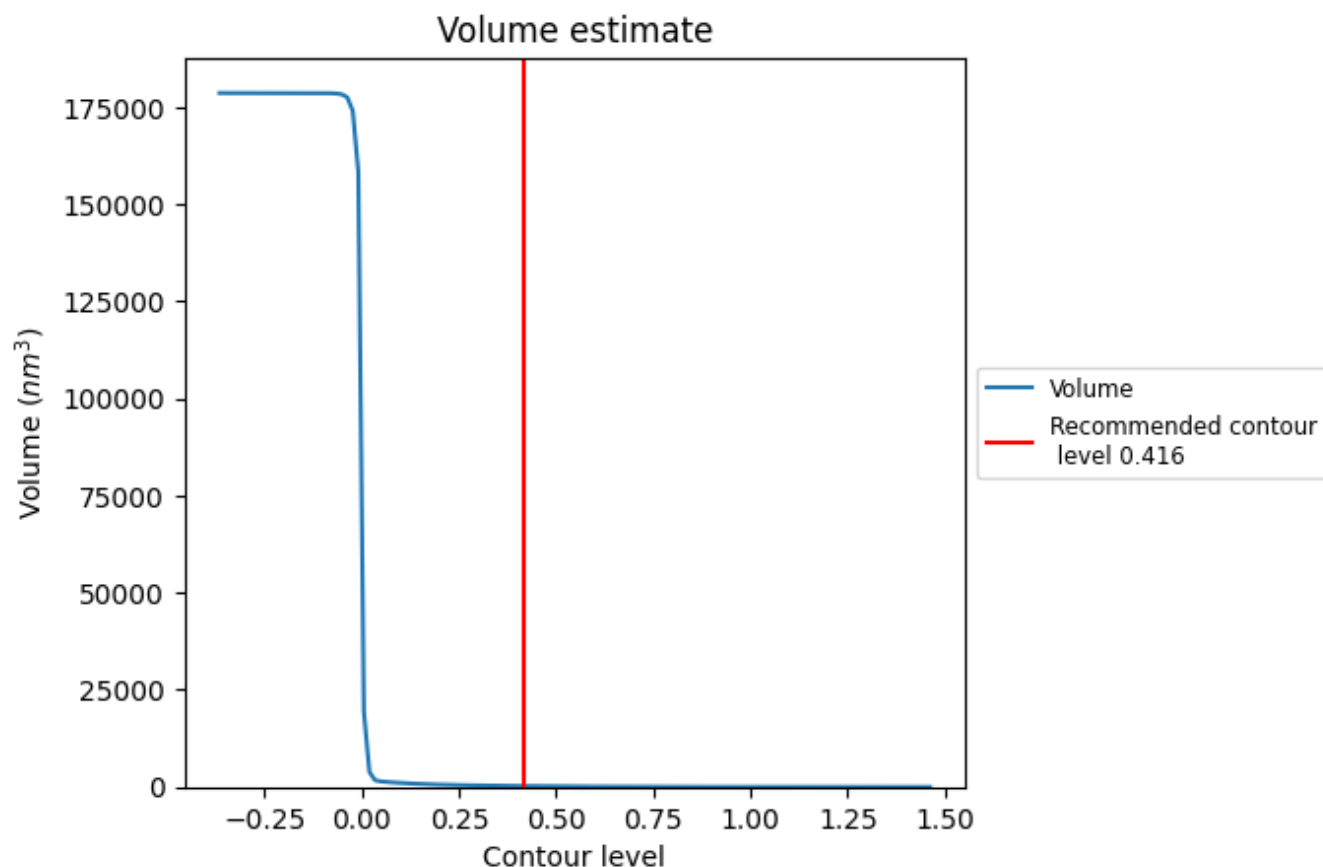
This section contains the results of statistical analysis of the map.

7.1 Map-value distribution [i](#)



The map-value distribution is plotted in 128 intervals along the x-axis. The y-axis is logarithmic. A spike in this graph at zero usually indicates that the volume has been masked.

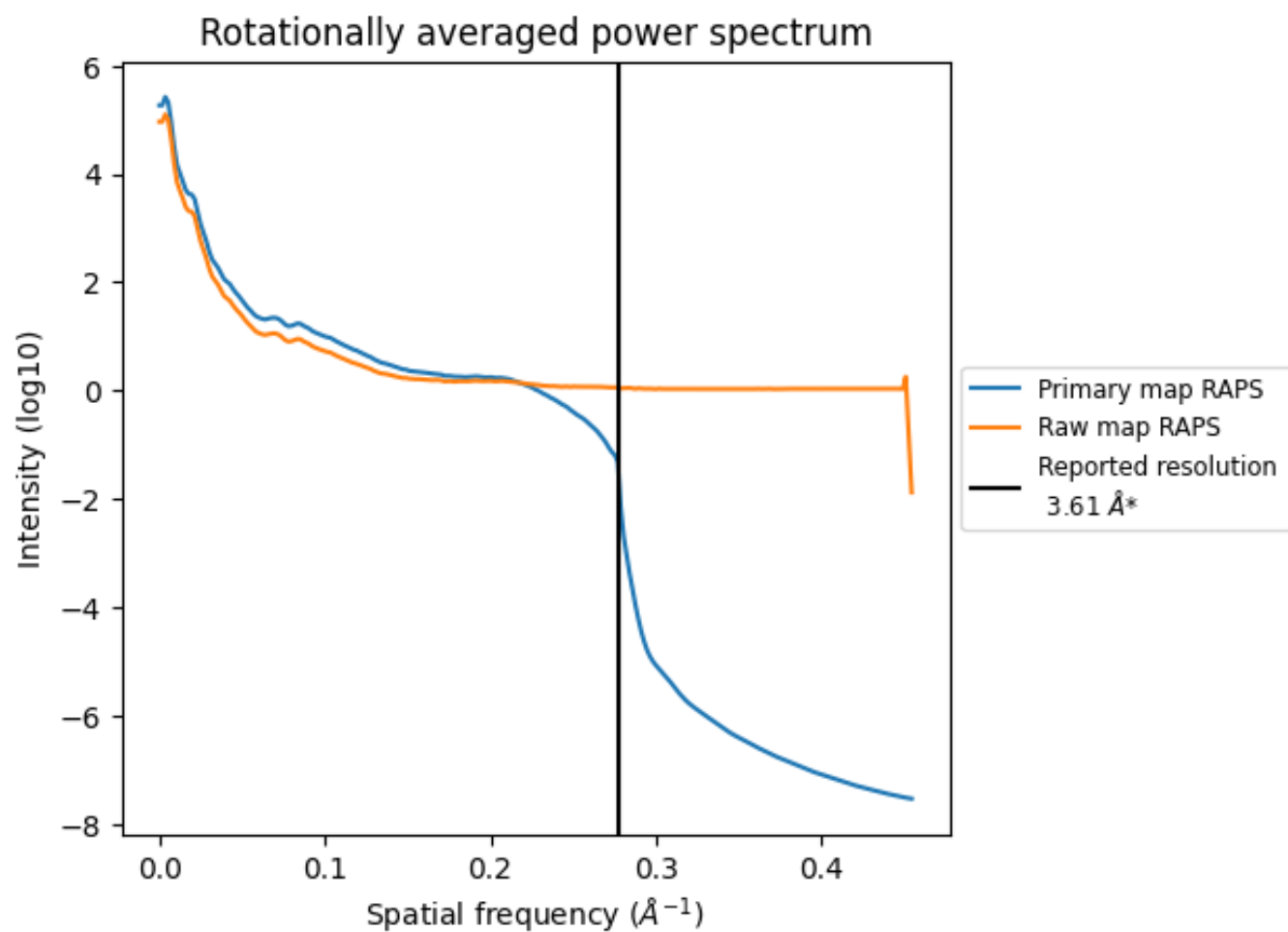
7.2 Volume estimate [i](#)



The volume at the recommended contour level is 236 nm^3 ; this corresponds to an approximate mass of 213 kDa.

The volume estimate graph shows how the enclosed volume varies with the contour level. The recommended contour level is shown as a vertical line and the intersection between the line and the curve gives the volume of the enclosed surface at the given level.

7.3 Rotationally averaged power spectrum ⓘ

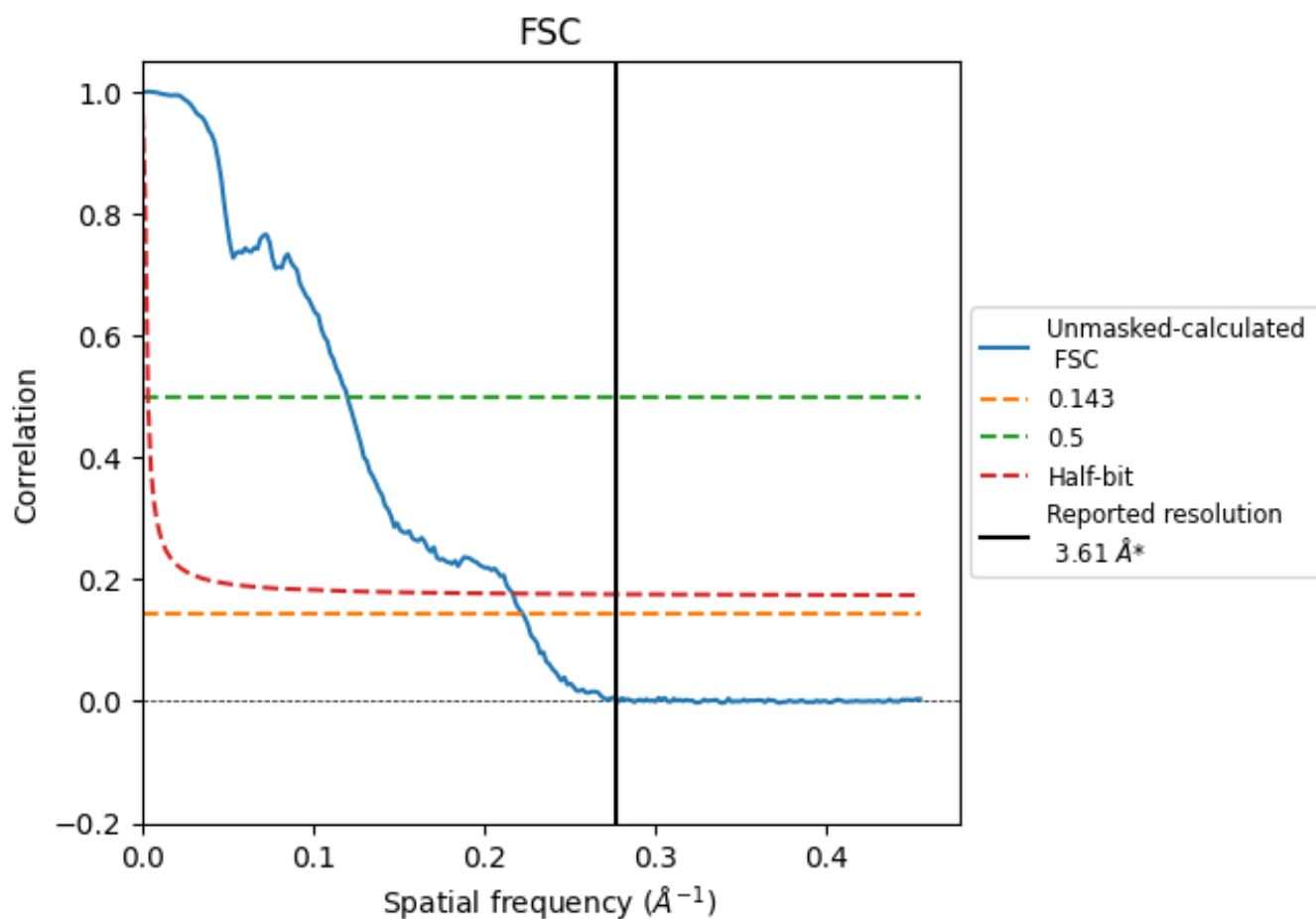


*Reported resolution corresponds to spatial frequency of 0.277 \AA^{-1}

8 Fourier-Shell correlation [i](#)

Fourier-Shell Correlation (FSC) is the most commonly used method to estimate the resolution of single-particle and subtomogram-averaged maps. The shape of the curve depends on the imposed symmetry, mask and whether or not the two 3D reconstructions used were processed from a common reference. The reported resolution is shown as a black line. A curve is displayed for the half-bit criterion in addition to lines showing the 0.143 gold standard cut-off and 0.5 cut-off.

8.1 FSC [i](#)



*Reported resolution corresponds to spatial frequency of 0.277 \AA^{-1}

8.2 Resolution estimates [i](#)

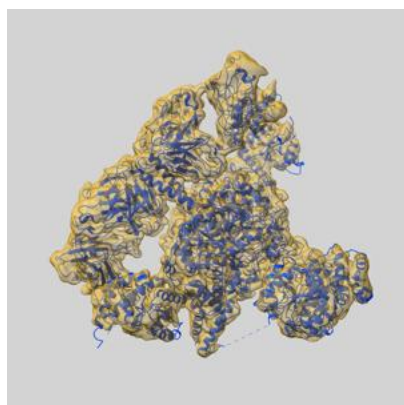
Resolution estimate (Å)	Estimation criterion (FSC cut-off)		
	0.143	0.5	Half-bit
Reported by author	3.61	-	-
Author-provided FSC curve	-	-	-
Unmasked-calculated*	4.49	8.34	4.61

*Resolution estimate based on FSC curve calculated by comparison of deposited half-maps. The value from deposited half-maps intersecting FSC 0.143 CUT-OFF 4.49 differs from the reported value 3.61 by more than 10 %

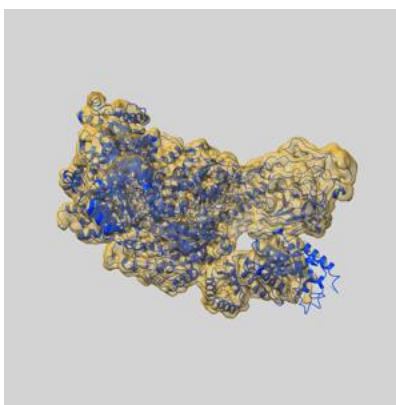
9 Map-model fit [i](#)

This section contains information regarding the fit between EMDB map EMD-41306 and PDB model 8TJO. Per-residue inclusion information can be found in [section 3](#) on [page 4](#).

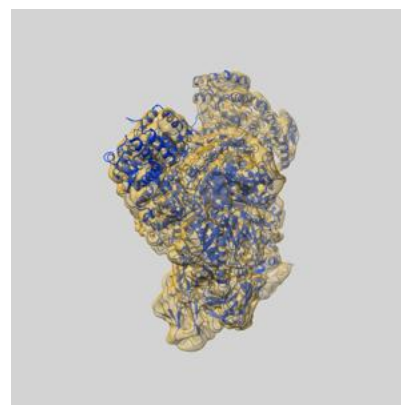
9.1 Map-model overlay [i](#)



X



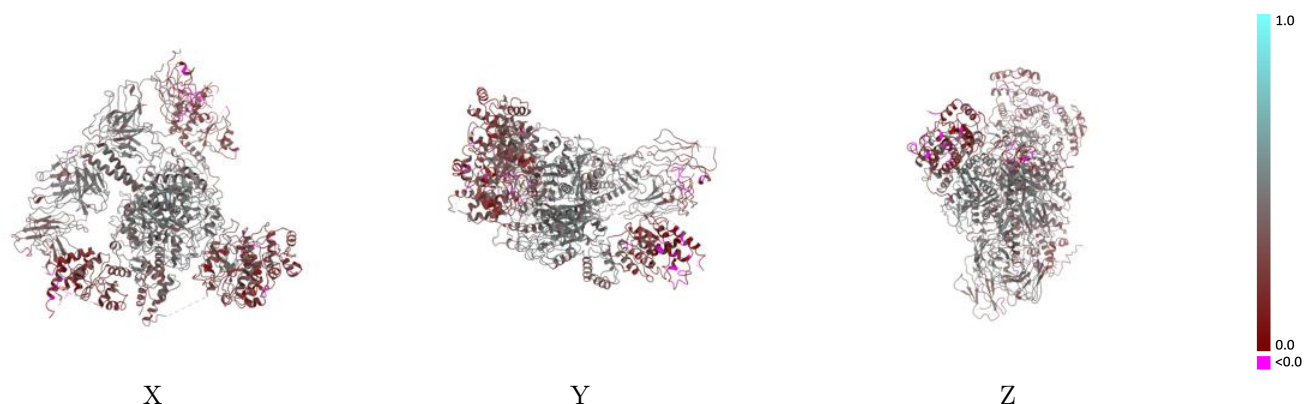
Y



Z

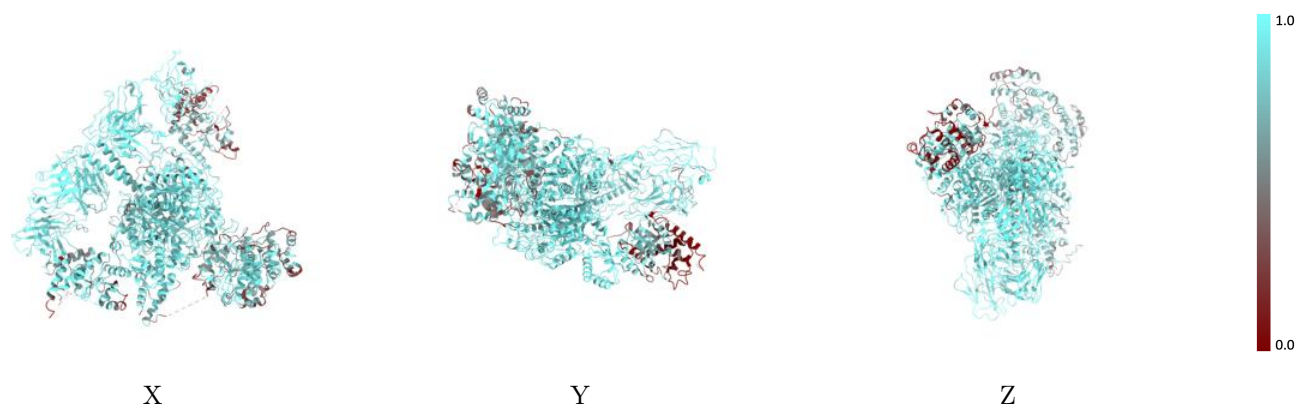
The images above show the 3D surface view of the map at the recommended contour level 0.416 at 50% transparency in yellow overlaid with a ribbon representation of the model coloured in blue. These images allow for the visual assessment of the quality of fit between the atomic model and the map.

9.2 Q-score mapped to coordinate model [i](#)



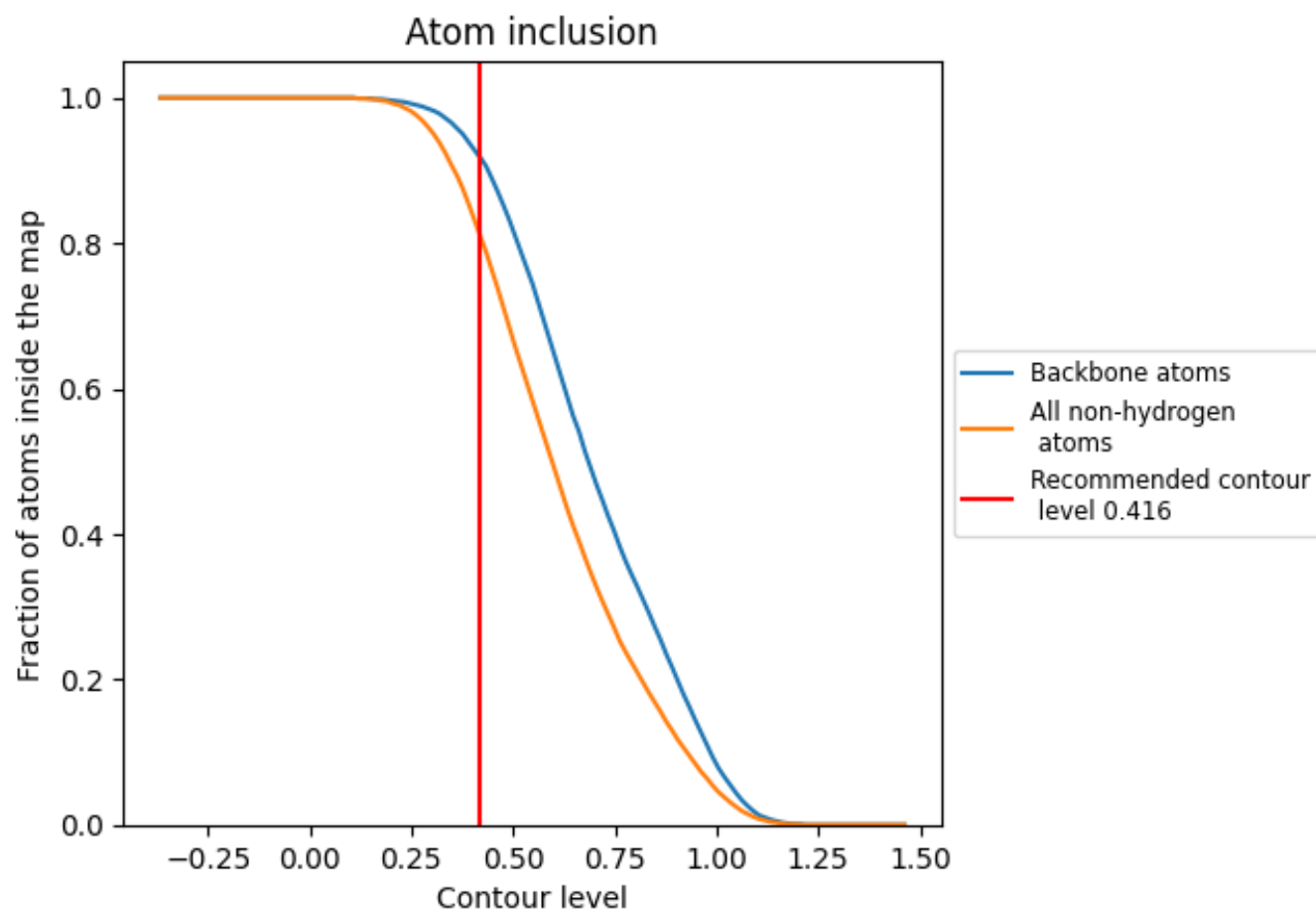
The images above show the model with each residue coloured according to its Q-score. This shows their resolvability in the map with higher Q-score values reflecting better resolvability. Please note: Q-score is calculating the resolvability of atoms, and thus high values are only expected at resolutions at which atoms can be resolved. Low Q-score values may therefore be expected for many entries.

9.3 Atom inclusion mapped to coordinate model [i](#)



The images above show the model with each residue coloured according to its atom inclusion. This shows to what extent they are inside the map at the recommended contour level (0.416).

9.4 Atom inclusion [i](#)



At the recommended contour level, 92% of all backbone atoms, 82% of all non-hydrogen atoms, are inside the map.

9.5 Map-model fit summary ⓘ

The table lists the average atom inclusion at the recommended contour level (0.416) and Q-score for the entire model and for each chain.

Chain	Atom inclusion	Q-score
All	<div><div></div></div> 0.8160	<div><div></div></div> 0.3650
A	<div><div></div></div> 0.7420	<div><div></div></div> 0.3380
B	<div><div></div></div> 0.8510	<div><div></div></div> 0.3880
C	<div><div></div></div> 0.8860	<div><div></div></div> 0.3530
D	<div><div></div></div> 0.8980	<div><div></div></div> 0.3800
E	<div><div></div></div> 0.9080	<div><div></div></div> 0.4020
F	<div><div></div></div> 0.9180	<div><div></div></div> 0.4090

1.0

0.0

<0.0