



Full wwPDB X-ray Structure Validation Report ⓘ

Mar 22, 2025 – 01:16 PM EDT

PDB ID : 5TDZ
Title : TEV Cleaved Human ATP Citrate Lyase Bound to Tartrate and ADP
Authors : Hu, J.; Fraser, M.E.
Deposited on : 2016-09-20
Resolution : 2.00 Å(reported)

This is a Full wwPDB X-ray Structure Validation Report for a publicly released PDB entry.

We welcome your comments at validation@mail.wwpdb.org

A user guide is available at

<https://www.wwpdb.org/validation/2017/XrayValidationReportHelp>

with specific help available everywhere you see the ⓘ symbol.

The types of validation reports are described at

<http://www.wwpdb.org/validation/2017/FAQs#types>.

The following versions of software and data (see [references ⓘ](#)) were used in the production of this report:

MolProbity	:	4.02b-467
Mogul	:	2022.3.0, CSD as543be (2022)
Xtriage (Phenix)	:	1.21
EDS	:	3.0
buster-report	:	1.1.7 (2018)
Percentile statistics	:	20231227.v01 (using entries in the PDB archive December 27th 2023)
CCP4	:	9.0.004 (Gargrove)
Density-Fitness	:	1.0.11
Ideal geometry (proteins)	:	Engh & Huber (2001)
Ideal geometry (DNA, RNA)	:	Parkinson et al. (1996)
Validation Pipeline (wwPDB-VP)	:	2.41.4

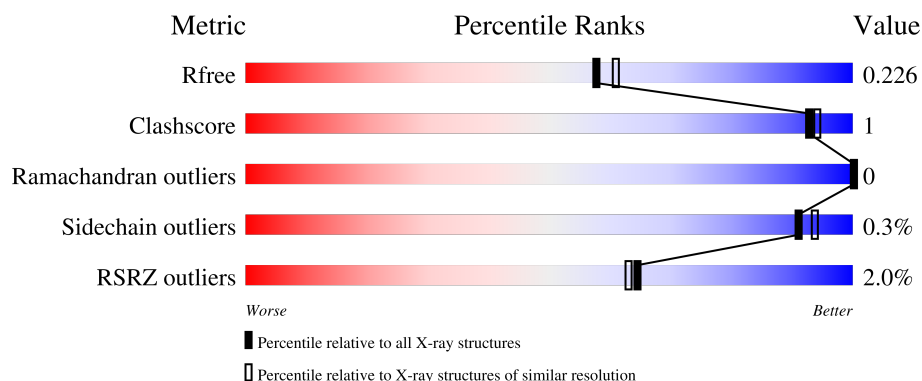
1 Overall quality at a glance

The following experimental techniques were used to determine the structure:

X-RAY DIFFRACTION

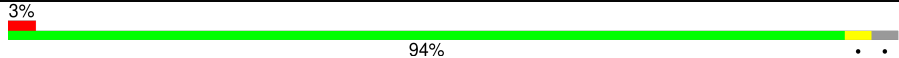
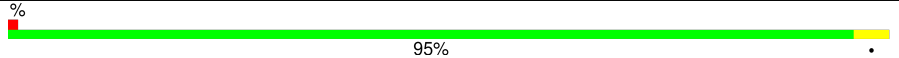
The reported resolution of this entry is 2.00 Å.

Percentile scores (ranging between 0-100) for global validation metrics of the entry are shown in the following graphic. The table shows the number of entries on which the scores are based.



Metric	Whole archive (#Entries)	Similar resolution (#Entries, resolution range(Å))
R_{free}	164625	9409 (2.00-2.00)
Clashscore	180529	10737 (2.00-2.00)
Ramachandran outliers	177936	10628 (2.00-2.00)
Sidechain outliers	177891	10627 (2.00-2.00)
RSRZ outliers	164620	9409 (2.00-2.00)

The table below summarises the geometric issues observed across the polymeric chains and their fit to the electron density. The red, orange, yellow and green segments of the lower bar indicate the fraction of residues that contain outliers for ≥ 3 , 2, 1 and 0 types of geometric quality criteria respectively. A grey segment represents the fraction of residues that are not modelled. The numeric value for each fraction is indicated below the corresponding segment, with a dot representing fractions $\leq 5\%$. The upper red bar (where present) indicates the fraction of residues that have poor fit to the electron density. The numeric value is given above the bar.

Mol	Chain	Length	Quality of chain
1	A	431	 3% 94% . .
2	B	324	 % 95% .

2 Entry composition

There are 11 unique types of molecules in this entry. The entry contains 12326 atoms, of which 5922 are hydrogens and 0 are deuteriums.

In the tables below, the ZeroOcc column contains the number of atoms modelled with zero occupancy, the AltConf column contains the number of residues with at least one atom in alternate conformation and the Trace column contains the number of residues modelled with at most 2 atoms.

- Molecule 1 is a protein called ATP-citrate synthase.

Mol	Chain	Residues	Atoms							ZeroOcc	AltConf	Trace
1	A	418	Total	C	H	N	O	S		0	3	0
			6612	2129	3316	550	608	9				

There are 6 discrepancies between the modelled and reference sequences:

Chain	Residue	Modelled	Actual	Comment	Reference
A	426	GLU	-	SEE REMARK 999	UNP P53396
A	427	ASN	-	SEE REMARK 999	UNP P53396
A	428	LEU	-	SEE REMARK 999	UNP P53396
A	429	TYR	-	SEE REMARK 999	UNP P53396
A	430	PHE	-	SEE REMARK 999	UNP P53396
A	431	GLN	-	SEE REMARK 999	UNP P53396

- Molecule 2 is a protein called ATP-citrate synthase.

Mol	Chain	Residues	Atoms							ZeroOcc	AltConf	Trace
2	B	324	Total	C	H	N	O	P	S	0	7	0
			5016	1574	2516	434	472	1	19			

There is a discrepancy between the modelled and reference sequences:

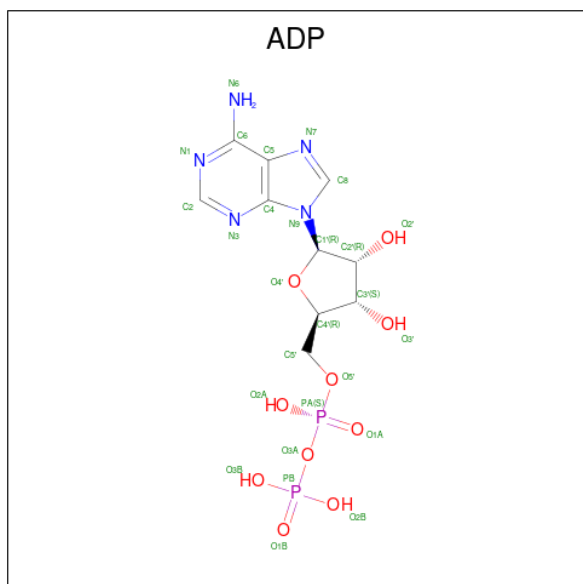
Chain	Residue	Modelled	Actual	Comment	Reference
B	487	SER	-	SEE REMARK 999	UNP P53396

- Molecule 3 is L(+)-TARTARIC ACID (three-letter code: TLA) (formula: C₄H₆O₆).



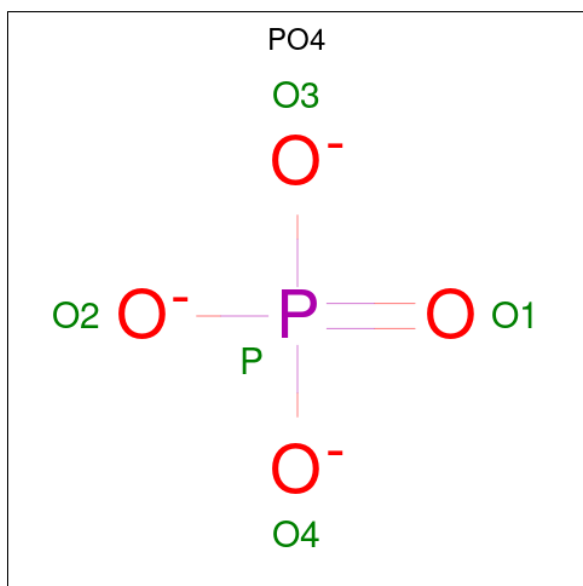
Mol	Chain	Residues	Atoms				ZeroOcc	AltConf
3	A	1	Total	C	H	O	0	0
			16	4	6	6		

- Molecule 4 is ADENOSINE-5'-DIPHOSPHATE (three-letter code: ADP) (formula: $C_{10}H_{15}N_5O_{10}P_2$).



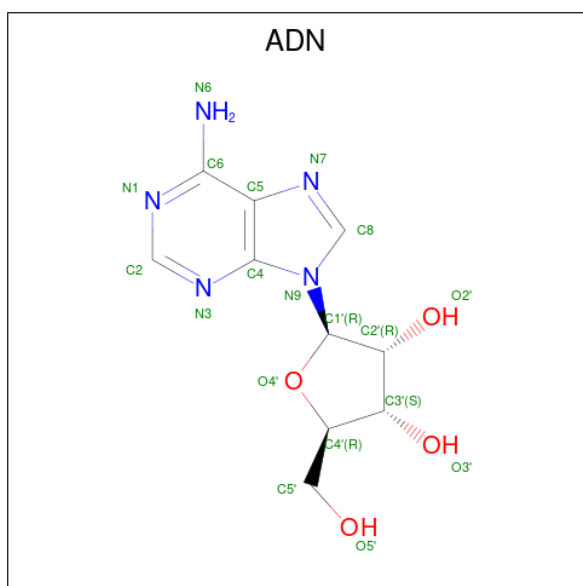
Mol	Chain	Residues	Atoms		ZeroOcc	AltConf
5	A	1	Total	Mg	0	0
			1	1		

- Molecule 6 is PHOSPHATE ION (three-letter code: PO4) (formula: O_4P).



Mol	Chain	Residues	Atoms			ZeroOcc	AltConf
6	A	1	Total	O	P	0	1
			5	4	1		

- Molecule 7 is ADENOSINE (three-letter code: ADN) (formula: $C_{10}H_{13}N_5O_4$).



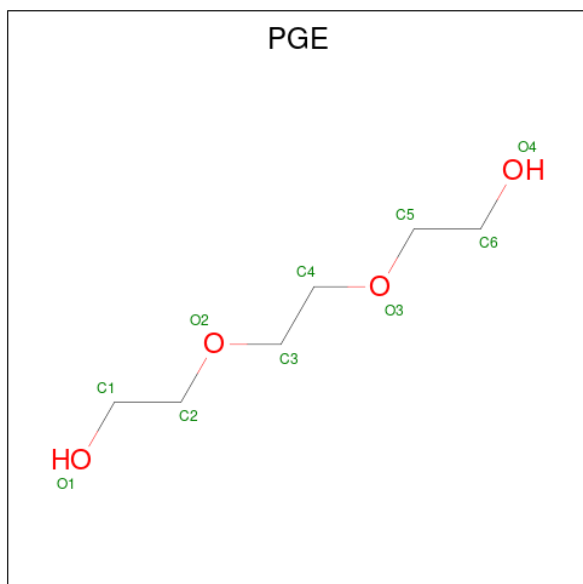
Mol	Chain	Residues	Atoms				ZeroOcc	AltConf
7	A	1	Total	C	H	N	O	
			32	10	13	5	4	
								0
								0

- Molecule 8 is GLYCEROL (three-letter code: GOL) (formula: $C_3H_8O_3$).



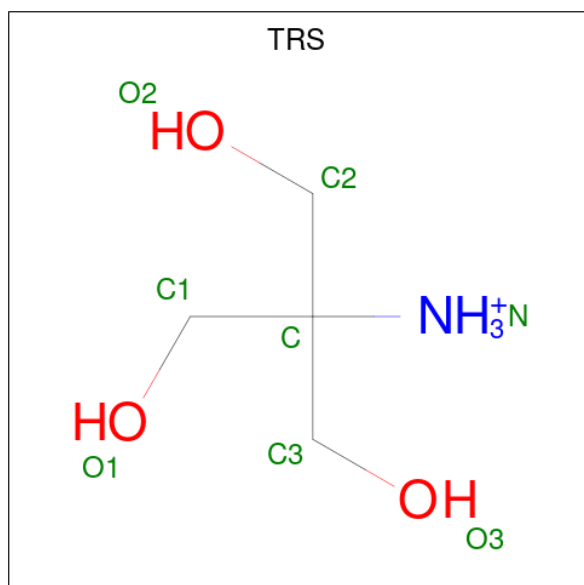
Mol	Chain	Residues	Atoms				ZeroOcc	AltConf
8	A	1	Total	C	H	O		
			14	3	8	3		
							0	0
8	B	1	Total	C	H	O		
			14	3	8	3		
							0	0

- Molecule 9 is TRIETHYLENE GLYCOL (three-letter code: PGE) (formula: $C_6H_{14}O_4$).



Mol	Chain	Residues	Atoms				ZeroOcc	AltConf
9	A	1	Total	C	H	O	0	0
			24	6	14	4		
9	B	1	Total	C	H	O	0	0
			24	6	14	4		

- Molecule 10 is 2-AMINO-2-HYDROXYMETHYL-PROPANE-1,3-DIOL (three-letter code: TRS) (formula: $C_4H_{12}NO_3$).



Mol	Chain	Residues	Atoms					ZeroOcc	AltConf
10	B	1	Total	C	H	N	O	0	0
			20	4	12	1	3		

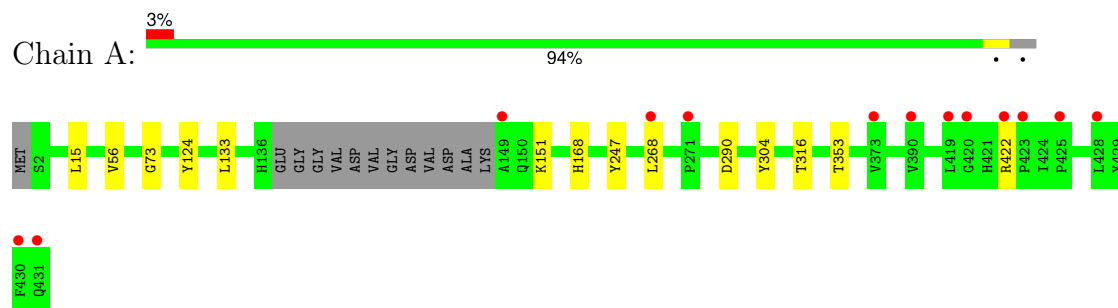
- Molecule 11 is water.

Mol	Chain	Residues	Atoms		ZeroOcc	AltConf
11	A	265	Total	O	0	0
			265	265		
11	B	241	Total	O	0	2
			241	241		

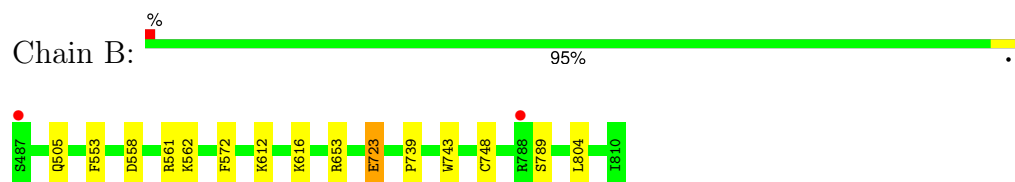
3 Residue-property plots [i](#)

These plots are drawn for all protein, RNA, DNA and oligosaccharide chains in the entry. The first graphic for a chain summarises the proportions of the various outlier classes displayed in the second graphic. The second graphic shows the sequence view annotated by issues in geometry and electron density. Residues are color-coded according to the number of geometric quality criteria for which they contain at least one outlier: green = 0, yellow = 1, orange = 2 and red = 3 or more. A red dot above a residue indicates a poor fit to the electron density ($RSRZ > 2$). Stretches of 2 or more consecutive residues without any outlier are shown as a green connector. Residues present in the sample, but not in the model, are shown in grey.

- Molecule 1: ATP-citrate synthase



- Molecule 2: ATP-citrate synthase



4 Data and refinement statistics

Property	Value	Source
Space group	P 21 21 21	Depositor
Cell constants a, b, c, α , β , γ	55.67Å 84.29Å 195.59Å 90.00° 90.00° 90.00°	Depositor
Resolution (Å)	48.38 – 2.00 48.38 – 2.00	Depositor EDS
% Data completeness (in resolution range)	97.2 (48.38-2.00) 93.2 (48.38-2.00)	Depositor EDS
R_{merge}	(Not available)	Depositor
R_{sym}	(Not available)	Depositor
$\langle I/\sigma(I) \rangle$	-	Xtriage
Refinement program	PHENIX (1.10_2152: ???)	Depositor
R, R_{free}	0.175 , 0.222 0.178 , 0.226	Depositor DCC
R_{free} test set	3074 reflections (5.00%)	wwPDB-VP
Wilson B-factor (Å ²)	(Not available)	Xtriage
Anisotropy	(Not available)	Xtriage
Bulk solvent k_{sol} (e/Å ³), B_{sol} (Å ²)	0.43 , 45.8	EDS
L-test for twinning ¹	$\langle L \rangle =$ (Not available), $\langle L^2 \rangle =$ (Not available)	Xtriage
Estimated twinning fraction	No twinning to report.	Xtriage
F_o, F_c correlation	0.96	EDS
Total number of atoms	12326	wwPDB-VP
Average B, all atoms (Å ²)	36.0	wwPDB-VP

Xtriage's analysis on translational NCS is as follows: *(Not available)*

¹Theoretical values of $\langle |L| \rangle$, $\langle L^2 \rangle$ for acentric reflections are 0.5, 0.333 respectively for untwinned datasets, and 0.375, 0.2 for perfectly twinned datasets.

5 Model quality [i](#)

5.1 Standard geometry [i](#)

Bond lengths and bond angles in the following residue types are not validated in this section: GOL, MG, TRS, PGE, NEP, PO4, ADN, TLA, ADP

The Z score for a bond length (or angle) is the number of standard deviations the observed value is removed from the expected value. A bond length (or angle) with $|Z| > 5$ is considered an outlier worth inspection. RMSZ is the root-mean-square of all Z scores of the bond lengths (or angles).

Mol	Chain	Bond lengths		Bond angles	
		RMSZ	$\# Z > 5$	RMSZ	$\# Z > 5$
1	A	0.62	0/3387	0.65	0/4595
2	B	0.65	2/2564 (0.1%)	0.70	0/3457
All	All	0.63	2/5951 (0.0%)	0.67	0/8052

All (2) bond length outliers are listed below:

Mol	Chain	Res	Type	Atoms	Z	Observed(Å)	Ideal(Å)
2	B	723[A]	GLU	CG-CD	6.67	1.61	1.51
2	B	723[B]	GLU	CG-CD	6.67	1.61	1.51

There are no bond angle outliers.

There are no chirality outliers.

There are no planarity outliers.

5.2 Too-close contacts [i](#)

In the following table, the Non-H and H(model) columns list the number of non-hydrogen atoms and hydrogen atoms in the chain respectively. The H(added) column lists the number of hydrogen atoms added and optimized by MolProbity. The Clashes column lists the number of clashes within the asymmetric unit, whereas Symm-Clashes lists symmetry-related clashes.

Mol	Chain	Non-H	H(model)	H(added)	Clashes	Symm-Clashes
1	A	3296	3316	3311	9	1
2	B	2500	2516	2491	8	0
3	A	10	6	4	0	0
4	A	27	15	12	0	0
5	A	1	0	0	0	0
6	A	5	0	0	0	0
7	A	19	13	13	0	0

Continued on next page...

Continued from previous page...

Mol	Chain	Non-H	H(model)	H(added)	Clashes	Symm-Clashes
8	A	6	8	8	0	0
8	B	6	8	8	0	0
9	A	10	14	14	0	0
9	B	10	14	14	0	0
10	B	8	12	12	0	1
11	A	265	0	0	1	2
11	B	241	0	0	1	1
All	All	6404	5922	5887	16	3

The all-atom clashscore is defined as the number of clashes found per 1000 atoms (including hydrogen atoms). The all-atom clashscore for this structure is 1.

All (16) close contacts within the same asymmetric unit are listed below, sorted by their clash magnitude.

Atom-1	Atom-2	Interatomic distance (Å)	Clash overlap (Å)
1:A:316[B]:THR:HG21	1:A:353:THR:HG22	1.82	0.60
2:B:558:ASP:OD1	2:B:561:ARG:NH2	2.35	0.58
1:A:133:LEU:HG	1:A:151:LYS:HD3	1.92	0.50
1:A:124:TYR:HE2	1:A:133:LEU:HD11	1.78	0.48
2:B:612:LYS:HE2	2:B:616:LYS:HE3	1.95	0.47
2:B:743:TRP:CH2	2:B:789:SER:HA	2.51	0.45
2:B:553:PHE:CE2	2:B:562:LYS:HD2	2.52	0.45
2:B:723[B]:GLU:OE2	11:B:1001:HOH:O	2.21	0.45
2:B:505:GLN:HG3	2:B:572:PHE:CG	2.52	0.44
1:A:56:VAL:HA	1:A:73:GLY:O	2.18	0.44
1:A:247:TYR:CG	1:A:268:LEU:HD12	2.54	0.43
1:A:304:TYR:HA	11:A:1016:HOH:O	2.20	0.42
2:B:739:PRO:HG2	2:B:804:LEU:HD11	2.02	0.41
1:A:15:LEU:C	1:A:15:LEU:HD23	2.41	0.41
1:A:290:ASP:HA	2:B:748:CYS:HB3	2.02	0.41
1:A:124:TYR:CE2	1:A:133:LEU:HD11	2.55	0.40

All (3) symmetry-related close contacts are listed below. The label for Atom-2 includes the symmetry operator and encoded unit-cell translations to be applied.

Atom-1	Atom-2	Interatomic distance (Å)	Clash overlap (Å)
11:A:1173:HOH:O	11:A:1195:HOH:O[4_555]	2.10	0.10
11:A:1132:HOH:O	11:B:1205:HOH:O[3_555]	2.12	0.08
1:A:168:HIS:O	10:B:901:TRS:HO1[3_655]	1.57	0.03

5.3 Torsion angles

5.3.1 Protein backbone

In the following table, the Percentiles column shows the percent Ramachandran outliers of the chain as a percentile score with respect to all X-ray entries followed by that with respect to entries of similar resolution.

The Analysed column shows the number of residues for which the backbone conformation was analysed, and the total number of residues.

Mol	Chain	Analysed	Favoured	Allowed	Outliers	Percentiles	
1	A	417/431 (97%)	408 (98%)	9 (2%)	0	100	100
2	B	327/324 (101%)	322 (98%)	5 (2%)	0	100	100
All	All	744/755 (98%)	730 (98%)	14 (2%)	0	100	100

There are no Ramachandran outliers to report.

5.3.2 Protein sidechains

In the following table, the Percentiles column shows the percent sidechain outliers of the chain as a percentile score with respect to all X-ray entries followed by that with respect to entries of similar resolution.

The Analysed column shows the number of residues for which the sidechain conformation was analysed, and the total number of residues.

Mol	Chain	Analysed	Rotameric	Outliers	Percentiles	
1	A	352/358 (98%)	351 (100%)	1 (0%)	91	94
2	B	268/263 (102%)	267 (100%)	1 (0%)	89	92
All	All	620/621 (100%)	618 (100%)	2 (0%)	91	94

All (2) residues with a non-rotameric sidechain are listed below:

Mol	Chain	Res	Type
1	A	422	ARG
2	B	653	ARG

Sometimes sidechains can be flipped to improve hydrogen bonding and reduce clashes. There are no such sidechains identified.

5.3.3 RNA ⓘ

There are no RNA molecules in this entry.

5.4 Non-standard residues in protein, DNA, RNA chains ⓘ

1 non-standard protein/DNA/RNA residue is modelled in this entry.

There are no bond length outliers.

There are no bond angle outliers.

There are no chirality outliers.

There are no torsion outliers.

There are no ring outliers.

No monomer is involved in short contacts.

5.5 Carbohydrates ⓘ

There are no oligosaccharides in this entry.

5.6 Ligand geometry ⓘ

Of 10 ligands modelled in this entry, 1 is monoatomic - leaving 9 for Mogul analysis.

In the following table, the Counts columns list the number of bonds (or angles) for which Mogul statistics could be retrieved, the number of bonds (or angles) that are observed in the model and the number of bonds (or angles) that are defined in the Chemical Component Dictionary. The Link column lists molecule types, if any, to which the group is linked. The Z score for a bond length (or angle) is the number of standard deviations the observed value is removed from the expected value. A bond length (or angle) with $|Z| > 2$ is considered an outlier worth inspection. RMSZ is the root-mean-square of all Z scores of the bond lengths (or angles).

Mol	Type	Chain	Res	Link	Bond lengths			Bond angles		
					Counts	RMSZ	$\# Z > 2$	Counts	RMSZ	$\# Z > 2$
7	ADN	A	905	-	17,21,21	0.67	0	17,31,31	0.84	0
10	TRS	B	901	-	7,7,7	0.42	0	9,9,9	1.06	0
9	PGE	A	907	-	9,9,9	0.41	0	8,8,8	0.62	0
8	GOL	B	902	-	5,5,5	0.36	0	5,5,5	0.53	0
8	GOL	A	906	-	5,5,5	0.39	0	5,5,5	0.40	0
3	TLA	A	901	-	9,9,9	0.29	0	12,12,12	0.66	0
9	PGE	B	903	-	9,9,9	0.39	0	8,8,8	0.62	0
4	ADP	A	902	5	24,29,29	0.89	0	29,45,45	1.02	2 (6%)
6	PO4	A	904[B]	-	4,4,4	1.10	0	6,6,6	0.55	0

In the following table, the Chirals column lists the number of chiral outliers, the number of chiral centers analysed, the number of these observed in the model and the number defined in the Chemical Component Dictionary. Similar counts are reported in the Torsion and Rings columns. '-' means no outliers of that kind were identified.

Mol	Type	Chain	Res	Link	Chirals	Torsions	Rings
7	ADN	A	905	-	-	0/2/22/22	0/3/3/3
10	TRS	B	901	-	-	0/9/9/9	-
8	GOL	B	902	-	-	0/4/4/4	-
8	GOL	A	906	-	-	0/4/4/4	-
3	TLA	A	901	-	-	3/12/12/12	-
9	PGE	B	903	-	-	5/7/7/7	-
4	ADP	A	902	5	-	2/12/32/32	0/3/3/3
9	PGE	A	907	-	-	1/7/7/7	-

There are no bond length outliers.

All (2) bond angle outliers are listed below:

Mol	Chain	Res	Type	Atoms	Z	Observed(°)	Ideal(°)
4	A	902	ADP	O5'-PA-O1A	2.60	119.22	108.94
4	A	902	ADP	C5-C6-N6	2.13	123.55	120.31

There are no chirality outliers.

All (11) torsion outliers are listed below:

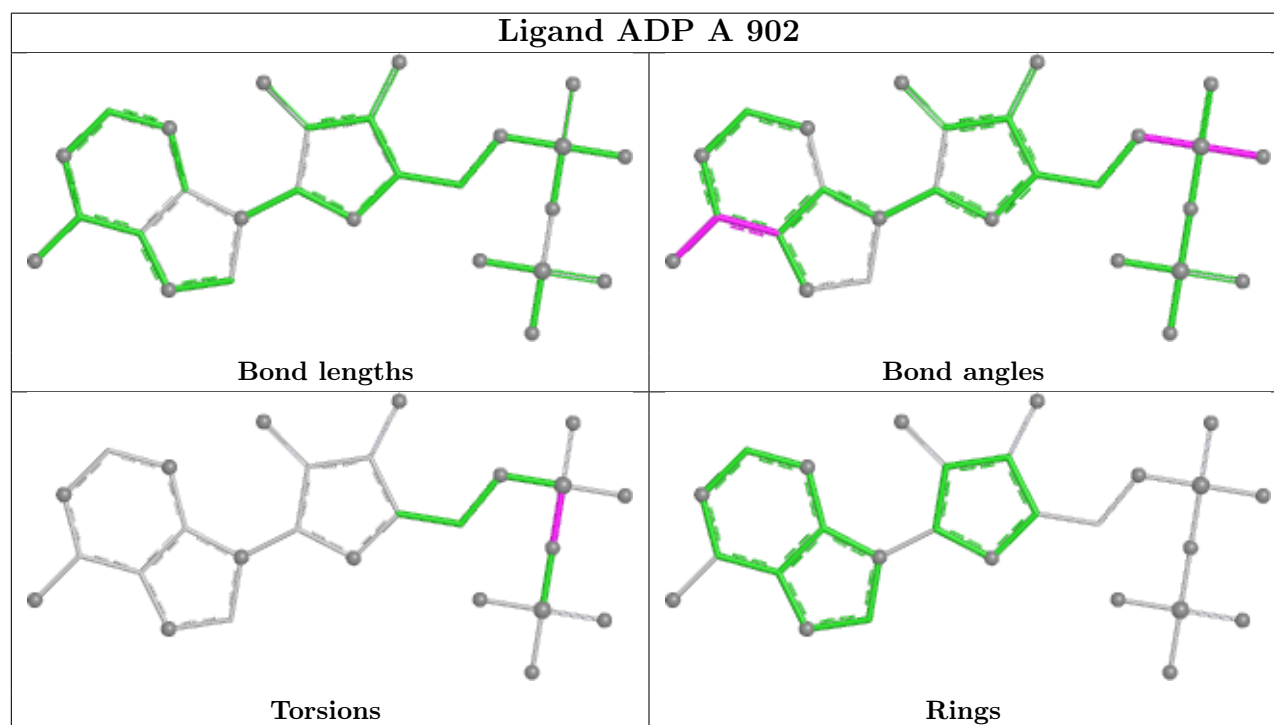
Mol	Chain	Res	Type	Atoms
9	A	907	PGE	O1-C1-C2-O2
9	B	903	PGE	O1-C1-C2-O2
3	A	901	TLA	C1-C2-C3-C4
9	B	903	PGE	O3-C5-C6-O4
9	B	903	PGE	C6-C5-O3-C4
3	A	901	TLA	O2-C2-C3-O3
9	B	903	PGE	C3-C4-O3-C5
4	A	902	ADP	PB-O3A-PA-O2A
9	B	903	PGE	O2-C3-C4-O3
4	A	902	ADP	PB-O3A-PA-O1A
3	A	901	TLA	C2-C3-C4-O4

There are no ring outliers.

1 monomer is involved in 1 short contact:

Mol	Chain	Res	Type	Clashes	Symm-Clashes
10	B	901	TRS	0	1

The following is a two-dimensional graphical depiction of Mogul quality analysis of bond lengths, bond angles, torsion angles, and ring geometry for all instances of the Ligand of Interest. In addition, ligands with molecular weight > 250 and outliers as shown on the validation Tables will also be included. For torsion angles, if less than 5% of the Mogul distribution of torsion angles is within 10 degrees of the torsion angle in question, then that torsion angle is considered an outlier. Any bond that is central to one or more torsion angles identified as an outlier by Mogul will be highlighted in the graph. For rings, the root-mean-square deviation (RMSD) between the ring in question and similar rings identified by Mogul is calculated over all ring torsion angles. If the average RMSD is greater than 60 degrees and the minimal RMSD between the ring in question and any Mogul-identified rings is also greater than 60 degrees, then that ring is considered an outlier. The outliers are highlighted in purple. The color gray indicates Mogul did not find sufficient equivalents in the CSD to analyse the geometry.



5.7 Other polymers [i](#)

There are no such residues in this entry.

5.8 Polymer linkage issues [i](#)

There are no chain breaks in this entry.

6 Fit of model and data [i](#)

6.1 Protein, DNA and RNA chains [i](#)

In the following table, the column labelled ‘#RSRZ> 2’ contains the number (and percentage) of RSRZ outliers, followed by percent RSRZ outliers for the chain as percentile scores relative to all X-ray entries and entries of similar resolution. The OWAB column contains the minimum, median, 95th percentile and maximum values of the occupancy-weighted average B-factor per residue. The column labelled ‘Q< 0.9’ lists the number of (and percentage) of residues with an average occupancy less than 0.9.

Mol	Chain	Analysed	<RSRZ>	#RSRZ>2	OWAB(Å ²)	Q<0.9
1	A	418/431 (96%)	0.10	13 (3%) 51 49	16, 37, 62, 89	3 (0%)
2	B	323/324 (99%)	-0.39	2 (0%) 85 85	17, 30, 48, 75	6 (1%)
All	All	741/755 (98%)	-0.12	15 (2%) 64 63	16, 33, 56, 89	9 (1%)

All (15) RSRZ outliers are listed below:

Mol	Chain	Res	Type	RSRZ
1	A	430	PHE	4.9
1	A	431	GLN	3.0
2	B	487	SER	2.6
1	A	149	ALA	2.5
1	A	422	ARG	2.4
1	A	428	LEU	2.3
1	A	390	VAL	2.3
1	A	425	PRO	2.2
2	B	788	ARG	2.1
1	A	420	GLY	2.1
1	A	419	LEU	2.1
1	A	423	PRO	2.1
1	A	373	VAL	2.1
1	A	271	PRO	2.0
1	A	268	LEU	2.0

6.2 Non-standard residues in protein, DNA, RNA chains [i](#)

In the following table, the Atoms column lists the number of modelled atoms in the group and the number defined in the chemical component dictionary. The B-factors column lists the minimum, median, 95th percentile and maximum values of B factors of atoms in the group. The column labelled ‘Q< 0.9’ lists the number of atoms with occupancy less than 0.9.

Mol	Type	Chain	Res	Atoms	RSCC	RSR	B-factors(\AA^2)	Q<0.9
2	NEP	B	760[A]	14/15	0.96	0.07	26,32,39,40	4

6.3 Carbohydrates [i](#)

There are no monosaccharides in this entry.

6.4 Ligands [i](#)

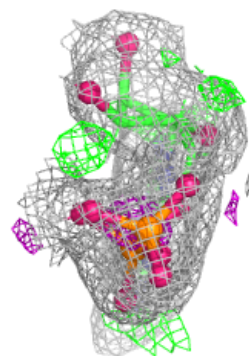
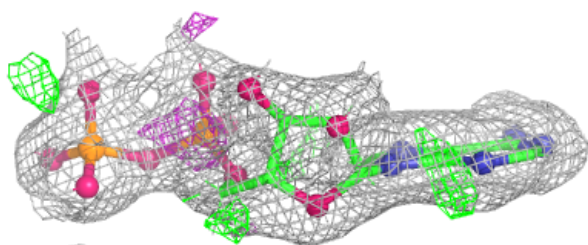
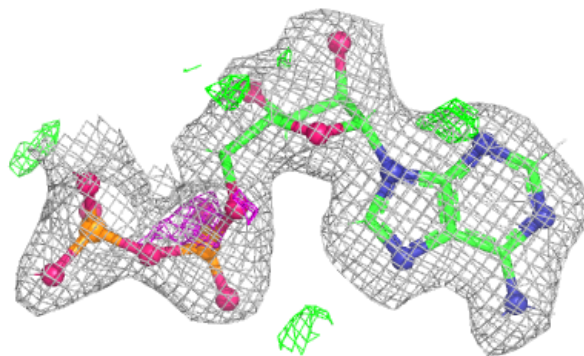
In the following table, the Atoms column lists the number of modelled atoms in the group and the number defined in the chemical component dictionary. The B-factors column lists the minimum, median, 95th percentile and maximum values of B factors of atoms in the group. The column labelled 'Q< 0.9' lists the number of atoms with occupancy less than 0.9.

Mol	Type	Chain	Res	Atoms	RSCC	RSR	B-factors(\AA^2)	Q<0.9
6	PO4	A	904[B]	5/5	0.78	0.23	29,32,36,38	5
8	GOL	B	902	6/6	0.83	0.12	35,49,61,64	0
7	ADN	A	905	19/19	0.85	0.12	41,76,101,110	0
10	TRS	B	901	8/8	0.86	0.11	37,45,54,57	0
9	PGE	B	903	10/10	0.87	0.12	40,51,60,61	0
8	GOL	A	906	6/6	0.88	0.12	43,60,66,74	0
9	PGE	A	907	10/10	0.88	0.13	37,46,57,59	0
4	ADP	A	902	27/27	0.92	0.09	23,38,51,53	0
3	TLA	A	901	10/10	0.94	0.07	29,39,47,49	0
5	MG	A	903	1/1	0.97	0.09	42,42,42,42	0

The following is a graphical depiction of the model fit to experimental electron density of all instances of the Ligand of Interest. In addition, ligands with molecular weight > 250 and outliers as shown on the geometry validation Tables will also be included. Each fit is shown from different orientation to approximate a three-dimensional view.

Electron density around ADP A 902:

$2mF_o-DF_c$ (at 0.7 rmsd) in gray
 mF_o-DF_c (at 3 rmsd) in purple (negative)
and green (positive)



6.5 Other polymers ⓘ

There are no such residues in this entry.