



Full wwPDB EM Validation Report ⓘ

May 26, 2025 – 12:39 AM EDT

PDB ID : 7RX3 / pdb_00007rx3
EMDB ID : EMD-24723
Title : afTMEM16 in C14 lipid nanodiscs with MSP1E3 scaffold protein in the absence of Ca²⁺
Authors : Falzone, M.E.; Accardi, A.
Deposited on : 2021-08-21
Resolution : 3.30 Å(reported)

This is a Full wwPDB EM Validation Report for a publicly released PDB entry.

We welcome your comments at validation@mail.wwpdb.org

A user guide is available at

<https://www.wwpdb.org/validation/2017/EMValidationReportHelp>
with specific help available everywhere you see the ⓘ symbol.

The types of validation reports are described at

<http://www.wwpdb.org/validation/2017/FAQs#types>.

The following versions of software and data (see [references ⓘ](#)) were used in the production of this report:

EMDB validation analysis : 0.0.1.dev118
Mogul : 2022.3.0, CSD as543be (2022)
MolProbity : 4-5-2 with Phenix2.0rc1
buster-report : 1.1.7 (2018)
Percentile statistics : 20231227.v01 (using entries in the PDB archive December 27th 2023)
MapQ : 1.9.13
Ideal geometry (proteins) : Engh & Huber (2001)
Ideal geometry (DNA, RNA) : Parkinson et al. (1996)
Validation Pipeline (wwPDB-VP) : 2.43.1

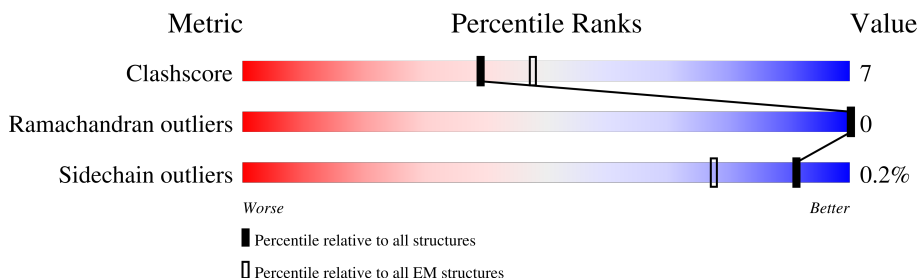
1 Overall quality at a glance

The following experimental techniques were used to determine the structure:

ELECTRON MICROSCOPY

The reported resolution of this entry is 3.30 Å.

Percentile scores (ranging between 0-100) for global validation metrics of the entry are shown in the following graphic. The table shows the number of entries on which the scores are based.



Metric	Whole archive (#Entries)	EM structures (#Entries)
Clashscore	210492	15764
Ramachandran outliers	207382	16835
Sidechain outliers	206894	16415

The table below summarises the geometric issues observed across the polymeric chains and their fit to the map. The red, orange, yellow and green segments of the bar indicate the fraction of residues that contain outliers for ≥ 3 , 2, 1 and 0 types of geometric quality criteria respectively. A grey segment represents the fraction of residues that are not modelled. The numeric value for each fraction is indicated below the corresponding segment, with a dot representing fractions $\leq 5\%$. The upper red bar (where present) indicates the fraction of residues that have poor fit to the EM map (all-atom inclusion $< 40\%$). The numeric value is given above the bar.

Mol	Chain	Length	Quality of chain
1	A	735	
1	B	735	

2 Entry composition ⓘ

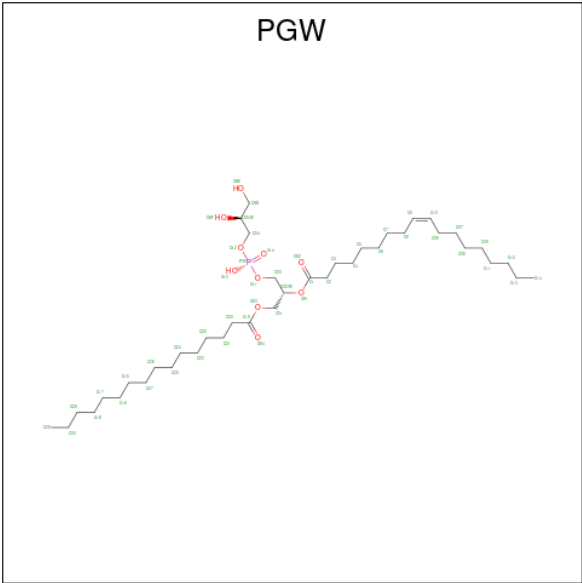
There are 2 unique types of molecules in this entry. The entry contains 10130 atoms, of which 0 are hydrogens and 0 are deuteriums.

In the tables below, the AltConf column contains the number of residues with at least one atom in alternate conformation and the Trace column contains the number of residues modelled with at most 2 atoms.

- Molecule 1 is a protein called afTMEM16 lipid scramblase.

Mol	Chain	Residues	Atoms					AltConf	Trace
1	B	591	Total	C	N	O	S	0	0
			4786	3135	800	832	19		
1	A	591	Total	C	N	O	S	0	0
			4786	3135	800	832	19		

- Molecule 2 is (1R)-2-{[(S)-{[(2S)-2,3-dihydroxypropyl]oxy}(hydroxy)phosphoryl]oxy}-1-[(hexadecanoyloxy)methyl]ethyl (9Z)-octadec-9-enoate (CCD ID: PGW) (formula: C₄₀H₇₇O₁₀P).

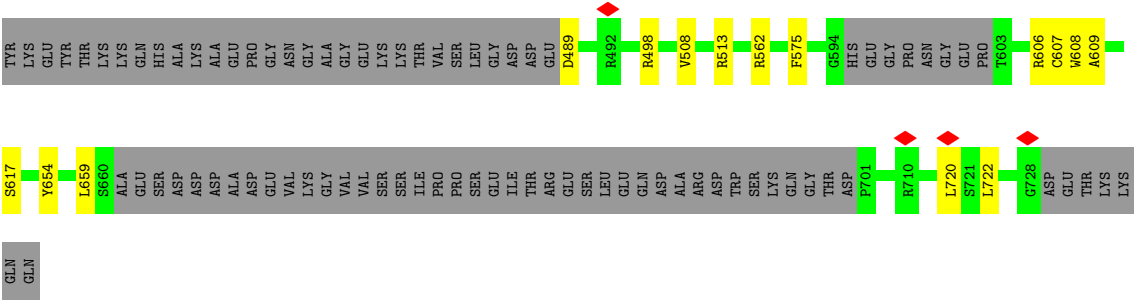


Mol	Chain	Residues	Atoms				AltConf
2	B	1	Total	C	O	P	0
			41	32	8	1	
2	B	1	Total	C	O	P	0
			32	21	10	1	
2	B	1	Total	C	O	P	0
			31	22	8	1	
2	B	1	Total	C	O	P	0
			38	29	8	1	

Continued on next page...

Continued from previous page...

Mol	Chain	Residues	Atoms				AltConf
2	B	1	Total	C	O	P	0
			34	23	10	1	
2	B	1	Total	C	O	P	0
			37	28	8	1	
2	B	1	Total	C	O		0
			31	26	5		
2	B	1	Total	C	O	P	0
			35	26	8	1	
2	A	1	Total	C	O	P	0
			37	28	8	1	
2	A	1	Total	C	O		0
			31	26	5		
2	A	1	Total	C	O	P	0
			35	26	8	1	
2	A	1	Total	C	O	P	0
			41	32	8	1	
2	A	1	Total	C	O	P	0
			32	21	10	1	
2	A	1	Total	C	O	P	0
			31	22	8	1	
2	A	1	Total	C	O	P	0
			38	29	8	1	
2	A	1	Total	C	O	P	0
			34	23	10	1	



4 Experimental information

Property	Value	Source
EM reconstruction method	SINGLE PARTICLE	Depositor
Imposed symmetry	POINT, Not provided	
Number of particles used	244507	Depositor
Resolution determination method	FSC 0.143 CUT-OFF	Depositor
CTF correction method	PHASE FLIPPING AND AMPLITUDE CORRECTION	Depositor
Microscope	FEI TITAN KRIOS	Depositor
Voltage (kV)	300	Depositor
Electron dose ($e^-/\text{\AA}^2$)	71.68	Depositor
Minimum defocus (nm)	Not provided	
Maximum defocus (nm)	Not provided	
Magnification	Not provided	
Image detector	GATAN K2 SUMMIT (4k x 4k)	Depositor
Maximum map value	0.243	Depositor
Minimum map value	-0.138	Depositor
Average map value	0.000	Depositor
Map value standard deviation	0.007	Depositor
Recommended contour level	0.037	Depositor
Map size (Å)	271.36, 271.36, 271.36	wwPDB
Map dimensions	256, 256, 256	wwPDB
Map angles (°)	90.0, 90.0, 90.0	wwPDB
Pixel spacing (Å)	1.06, 1.06, 1.06	Depositor

5 Model quality

5.1 Standard geometry

Bond lengths and bond angles in the following residue types are not validated in this section: PGW

The Z score for a bond length (or angle) is the number of standard deviations the observed value is removed from the expected value. A bond length (or angle) with $|Z| > 5$ is considered an outlier worth inspection. RMSZ is the root-mean-square of all Z scores of the bond lengths (or angles).

Mol	Chain	Bond lengths		Bond angles	
		RMSZ	$\# Z > 5$	RMSZ	$\# Z > 5$
1	A	0.33	0/4909	0.59	5/6667 (0.1%)
1	B	0.33	0/4909	0.59	5/6667 (0.1%)
All	All	0.33	0/9818	0.59	10/13334 (0.1%)

There are no bond length outliers.

All (10) bond angle outliers are listed below:

Mol	Chain	Res	Type	Atoms	Z	Observed(°)	Ideal(°)
1	B	158	LYS	CA-C-N	5.78	132.59	121.54
1	B	158	LYS	C-N-CA	5.78	132.59	121.54
1	A	158	LYS	CA-C-N	5.77	132.57	121.54
1	A	158	LYS	C-N-CA	5.77	132.57	121.54
1	A	508	VAL	N-CA-C	-5.12	107.84	112.96
1	B	508	VAL	N-CA-C	-5.09	107.87	112.96
1	A	331	LEU	CA-C-N	5.04	123.42	120.24
1	A	331	LEU	C-N-CA	5.04	123.42	120.24
1	B	331	LEU	CA-C-N	5.03	123.41	120.24
1	B	331	LEU	C-N-CA	5.03	123.41	120.24

There are no chirality outliers.

There are no planarity outliers.

5.2 Too-close contacts

In the following table, the Non-H and H(model) columns list the number of non-hydrogen atoms and hydrogen atoms in the chain respectively. The H(added) column lists the number of hydrogen atoms added and optimized by MolProbity. The Clashes column lists the number of clashes within the asymmetric unit, whereas Symm-Clashes lists symmetry-related clashes.

Mol	Chain	Non-H	H(model)	H(added)	Clashes	Symm-Clashes
1	A	4786	0	4763	73	0
1	B	4786	0	4763	66	0
2	A	279	0	342	12	0
2	B	279	0	342	11	0
All	All	10130	0	10210	142	0

The all-atom clashscore is defined as the number of clashes found per 1000 atoms (including hydrogen atoms). The all-atom clashscore for this structure is 7.

All (142) close contacts within the same asymmetric unit are listed below, sorted by their clash magnitude.

Atom-1	Atom-2	Interatomic distance (Å)	Clash overlap (Å)
1:B:328:VAL:O	1:B:332:ILE:HG13	1.82	0.79
1:B:21:ARG:HA	1:B:61:PHE:HB3	1.65	0.79
1:A:328:VAL:O	1:A:332:ILE:HG13	1.83	0.78
1:A:175:GLU:OE2	1:A:240:THR:HG21	1.84	0.78
1:A:21:ARG:HA	1:A:61:PHE:HB3	1.65	0.77
1:B:175:GLU:OE2	1:B:240:THR:HG21	1.84	0.77
1:B:659:LEU:HD12	1:B:659:LEU:O	1.87	0.74
1:A:659:LEU:HD12	1:A:659:LEU:O	1.87	0.74
1:B:332:ILE:HG23	1:B:373:THR:HG22	1.71	0.73
1:A:60:LEU:HD22	1:A:60:LEU:O	1.89	0.73
1:A:332:ILE:HG23	1:A:373:THR:HG22	1.71	0.72
1:B:60:LEU:HD22	1:B:60:LEU:O	1.89	0.72
1:A:60:LEU:HD13	1:A:60:LEU:H	1.56	0.71
1:B:60:LEU:H	1:B:60:LEU:HD13	1.56	0.71
1:A:60:LEU:H	1:A:60:LEU:CD1	2.07	0.67
1:A:24:TYR:CE2	1:A:60:LEU:HD12	2.30	0.67
1:B:271:PHE:HZ	1:B:279:ARG:NH1	1.93	0.67
1:A:52:VAL:CG2	1:A:60:LEU:HD23	2.25	0.66
1:B:24:TYR:CE2	1:B:60:LEU:HD12	2.30	0.66
1:A:388:PHE:O	1:A:392:ILE:HG13	1.96	0.66
1:B:370:ASN:HD21	1:B:513:ARG:HG3	1.60	0.66
1:A:271:PHE:HZ	1:A:279:ARG:NH1	1.93	0.66
1:A:370:ASN:HD21	1:A:513:ARG:HG3	1.60	0.66
1:B:60:LEU:H	1:B:60:LEU:CD1	2.07	0.66
1:B:52:VAL:CG2	1:B:60:LEU:HD23	2.25	0.66
1:B:388:PHE:O	1:B:392:ILE:HG13	1.96	0.65
1:B:24:TYR:HE2	1:B:60:LEU:HD12	1.65	0.61
1:A:24:TYR:HE2	1:A:60:LEU:HD12	1.65	0.61
1:A:332:ILE:HG23	1:A:373:THR:CG2	2.31	0.60
1:B:384:VAL:O	1:B:388:PHE:HB2	2.02	0.59

Continued on next page...

Continued from previous page...

Atom-1	Atom-2	Interatomic distance (Å)	Clash overlap (Å)
1:A:384:VAL:O	1:A:388:PHE:HB2	2.02	0.59
1:B:332:ILE:HG23	1:B:373:THR:CG2	2.31	0.59
1:A:606:ARG:NH2	2:A:904:PGW:C1	2.66	0.59
1:B:606:ARG:NH2	2:B:801:PGW:C1	2.66	0.59
1:A:381:THR:HG21	1:A:429:GLN:HG3	1.85	0.58
1:A:19:VAL:HG22	1:A:63:PHE:CD2	2.38	0.58
1:B:19:VAL:HG22	1:B:63:PHE:CD2	2.38	0.58
1:B:381:THR:HG21	1:B:429:GLN:HG3	1.85	0.58
1:B:606:ARG:HH22	2:B:801:PGW:C1	2.17	0.58
1:A:271:PHE:CZ	1:A:279:ARG:NH1	2.71	0.57
1:B:271:PHE:CZ	1:B:279:ARG:NH1	2.71	0.57
1:A:606:ARG:HH22	2:A:904:PGW:C1	2.17	0.57
1:B:175:GLU:OE2	1:B:240:THR:CG2	2.54	0.56
1:A:17:ASP:OD1	1:A:107:ARG:NH2	2.39	0.55
1:B:17:ASP:OD1	1:B:107:ARG:NH2	2.39	0.55
1:A:274:THR:O	1:A:278:TYR:CD2	2.59	0.55
1:B:256:GLU:OE2	1:B:267:VAL:CG2	2.55	0.55
1:B:384:VAL:O	1:B:388:PHE:HD2	1.90	0.54
1:A:256:GLU:OE2	1:A:267:VAL:CG2	2.55	0.54
1:A:55:GLY:HA2	1:A:498:ARG:HE	1.72	0.54
1:B:274:THR:O	1:B:278:TYR:CD2	2.59	0.54
1:B:306:ILE:HD13	1:B:393:VAL:HG13	1.90	0.54
1:A:384:VAL:O	1:A:388:PHE:HD2	1.90	0.54
1:A:489:ASP:N	1:A:489:ASP:OD1	2.40	0.54
1:A:175:GLU:OE2	1:A:240:THR:CG2	2.54	0.53
1:A:306:ILE:HD13	1:A:393:VAL:HG13	1.90	0.53
1:B:55:GLY:HA2	1:B:498:ARG:HE	1.71	0.53
1:B:60:LEU:HD22	1:B:60:LEU:C	2.34	0.53
1:A:256:GLU:OE2	1:A:267:VAL:HG22	2.09	0.52
1:A:60:LEU:CD1	1:A:60:LEU:N	2.73	0.52
1:A:60:LEU:HD22	1:A:60:LEU:C	2.34	0.52
1:B:489:ASP:N	1:B:489:ASP:OD1	2.40	0.52
1:B:340:LEU:HG	1:B:366:ILE:HD12	1.92	0.52
1:A:340:LEU:HG	1:A:366:ILE:HD12	1.92	0.51
1:A:389:ALA:O	1:A:393:VAL:HG23	2.10	0.51
1:B:256:GLU:OE2	1:B:267:VAL:HG22	2.09	0.51
1:A:161:LEU:O	1:A:185:GLN:NE2	2.42	0.51
2:B:806:PGW:H23	1:A:608:TRP:CH2	2.46	0.51
1:A:60:LEU:O	1:A:60:LEU:HD13	2.11	0.51
1:B:389:ALA:O	1:B:393:VAL:HG23	2.10	0.50
1:B:60:LEU:O	1:B:60:LEU:HD13	2.11	0.50

Continued on next page...

Continued from previous page...

Atom-1	Atom-2	Interatomic distance (Å)	Clash overlap (Å)
1:B:608:TRP:CH2	2:A:901:PGW:H23	2.46	0.50
1:B:276:ARG:NH1	1:B:351:ASN:O	2.45	0.50
1:B:384:VAL:O	1:B:388:PHE:CD2	2.65	0.50
1:A:607:CYS:C	1:A:609:ALA:N	2.70	0.49
1:A:276:ARG:NH1	1:A:351:ASN:O	2.45	0.49
1:B:161:LEU:O	1:B:185:GLN:NE2	2.42	0.49
1:B:607:CYS:C	1:B:609:ALA:N	2.70	0.49
1:A:607:CYS:C	1:A:609:ALA:H	2.21	0.49
1:B:607:CYS:C	1:B:609:ALA:H	2.21	0.48
1:A:384:VAL:O	1:A:388:PHE:CD2	2.65	0.48
1:A:283:GLN:HE22	1:A:364:GLN:HE21	1.62	0.48
1:B:283:GLN:HE22	1:B:364:GLN:HE21	1.62	0.47
1:B:60:LEU:CD1	1:B:60:LEU:N	2.73	0.47
1:B:52:VAL:HB	1:B:62:VAL:HG12	1.97	0.47
1:B:320:LEU:HA	1:B:323:ILE:HG12	1.97	0.46
1:B:575:PHE:HE1	2:A:903:PGW:H2	1.81	0.46
1:B:52:VAL:HG23	1:B:60:LEU:HD23	1.98	0.45
1:A:52:VAL:HB	1:A:62:VAL:HG12	1.97	0.45
1:A:129:ARG:HH21	1:A:138:ALA:HB2	1.82	0.45
2:B:808:PGW:H2	1:A:575:PHE:HE1	1.81	0.45
1:A:52:VAL:HG23	1:A:60:LEU:HD23	1.98	0.45
1:A:320:LEU:HA	1:A:323:ILE:HG12	1.97	0.45
1:B:425:ARG:NH1	1:B:429:GLN:OE1	2.50	0.45
1:A:332:ILE:CG2	1:A:373:THR:HG22	2.46	0.45
1:B:608:TRP:O	1:B:608:TRP:CE3	2.70	0.45
1:B:54:GLN:HG2	1:A:722:LEU:HD22	1.99	0.44
1:B:129:ARG:HH21	1:B:138:ALA:HB2	1.82	0.44
1:A:172:THR:HG22	1:A:173:PHE:N	2.33	0.44
1:A:271:PHE:HZ	1:A:279:ARG:HH11	1.64	0.44
1:A:608:TRP:CE3	1:A:608:TRP:O	2.70	0.44
1:A:425:ARG:NH1	1:A:429:GLN:OE1	2.50	0.44
1:A:659:LEU:HD12	1:A:659:LEU:C	2.43	0.44
1:B:659:LEU:HD12	1:B:659:LEU:C	2.43	0.43
1:B:85:LEU:HD11	1:A:654:TYR:HD2	1.83	0.43
2:A:903:PGW:H10	2:A:903:PGW:H08A	1.71	0.43
1:A:381:THR:O	1:A:386:VAL:HG23	2.19	0.43
2:B:808:PGW:H08A	2:B:808:PGW:H10	1.71	0.43
1:A:420:SER:O	1:A:420:SER:OG	2.33	0.43
2:B:806:PGW:H5	2:B:807:PGW:H5	2.01	0.43
1:A:606:ARG:NH2	2:A:904:PGW:O01	2.52	0.42
1:A:617:SER:HB2	2:A:904:PGW:H16	2.02	0.42

Continued on next page...

Continued from previous page...

Atom-1	Atom-2	Interatomic distance (Å)	Clash overlap (Å)
1:B:172:THR:HG22	1:B:173:PHE:N	2.33	0.42
1:A:388:PHE:CZ	2:A:902:PGW:H22A	2.54	0.42
1:B:381:THR:O	1:B:386:VAL:HG23	2.19	0.42
1:A:144:ASP:OD1	1:A:144:ASP:N	2.50	0.42
1:B:19:VAL:CG2	1:B:63:PHE:CD2	3.03	0.42
1:B:388:PHE:CZ	2:B:807:PGW:H22A	2.55	0.42
1:B:606:ARG:NH2	2:B:801:PGW:O01	2.52	0.42
2:B:806:PGW:H7	2:B:807:PGW:H7	2.02	0.42
1:B:376:LEU:O	1:B:380:LEU:HB2	2.20	0.42
1:B:610:LEU:HD21	2:B:807:PGW:H6A	2.01	0.42
1:A:19:VAL:CG2	1:A:63:PHE:CD2	3.03	0.42
1:A:359:LYS:HD3	1:A:359:LYS:HA	1.93	0.42
1:B:113:HIS:O	1:B:117:VAL:HB	2.20	0.42
1:B:589:TYR:OH	1:B:605:ILE:O	2.35	0.41
1:B:617:SER:HB2	2:B:801:PGW:H16	2.02	0.41
1:A:113:HIS:O	1:A:117:VAL:HB	2.20	0.41
2:A:901:PGW:H7	2:A:902:PGW:H7	2.02	0.41
1:A:117:VAL:HA	1:A:118:PRO:HD3	1.85	0.41
1:A:376:LEU:O	1:A:380:LEU:HB2	2.20	0.41
1:A:607:CYS:SG	2:A:902:PGW:H03	2.59	0.41
2:A:901:PGW:H5	2:A:902:PGW:H5	2.01	0.41
1:A:60:LEU:HD13	1:A:60:LEU:N	2.26	0.41
1:B:33:ILE:HG12	1:A:720:LEU:HD13	2.03	0.41
1:A:722:LEU:HD23	1:A:722:LEU:HA	1.95	0.41
1:A:388:PHE:HZ	2:A:902:PGW:H22A	1.86	0.41
1:B:332:ILE:CG2	1:B:373:THR:HG22	2.46	0.40
1:B:279:ARG:HG2	1:B:349:TYR:CE2	2.56	0.40
1:A:240:THR:CG2	1:A:562:ARG:HG2	2.51	0.40
1:A:279:ARG:HG2	1:A:349:TYR:CE2	2.57	0.40
1:B:240:THR:CG2	1:B:562:ARG:HG2	2.51	0.40

There are no symmetry-related clashes.

5.3 Torsion angles

5.3.1 Protein backbone

In the following table, the Percentiles column shows the percent Ramachandran outliers of the chain as a percentile score with respect to all PDB entries followed by that with respect to all EM entries.

The Analysed column shows the number of residues for which the backbone conformation was analysed, and the total number of residues.

Mol	Chain	Analysed	Favoured	Allowed	Outliers	Percentiles	
1	A	577/735 (78%)	534 (92%)	43 (8%)	0	100	100
1	B	577/735 (78%)	533 (92%)	44 (8%)	0	100	100
All	All	1154/1470 (78%)	1067 (92%)	87 (8%)	0	100	100

There are no Ramachandran outliers to report.

5.3.2 Protein sidechains ⓘ

In the following table, the Percentiles column shows the percent sidechain outliers of the chain as a percentile score with respect to all PDB entries followed by that with respect to all EM entries.

The Analysed column shows the number of residues for which the sidechain conformation was analysed, and the total number of residues.

Mol	Chain	Analysed	Rotameric	Outliers	Percentiles	
1	A	508/646 (79%)	507 (100%)	1 (0%)	92	95
1	B	508/646 (79%)	507 (100%)	1 (0%)	92	95
All	All	1016/1292 (79%)	1014 (100%)	2 (0%)	91	95

All (2) residues with a non-rotameric sidechain are listed below:

Mol	Chain	Res	Type
1	B	60	LEU
1	A	60	LEU

Sometimes sidechains can be flipped to improve hydrogen bonding and reduce clashes. All (19) such sidechains are listed below:

Mol	Chain	Res	Type
1	B	102	GLN
1	B	143	HIS
1	B	148	ASN
1	B	216	ASN
1	B	239	GLN
1	B	280	GLN
1	B	364	GLN
1	B	370	ASN

Continued on next page...

Continued from previous page...

Mol	Chain	Res	Type
1	B	518	GLN
1	B	539	ASN
1	A	102	GLN
1	A	143	HIS
1	A	148	ASN
1	A	216	ASN
1	A	280	GLN
1	A	364	GLN
1	A	370	ASN
1	A	518	GLN
1	A	539	ASN

5.3.3 RNA ⓘ

There are no RNA molecules in this entry.

5.4 Non-standard residues in protein, DNA, RNA chains ⓘ

There are no non-standard protein/DNA/RNA residues in this entry.

5.5 Carbohydrates ⓘ

There are no oligosaccharides in this entry.

5.6 Ligand geometry ⓘ

16 ligands are modelled in this entry.

In the following table, the Counts columns list the number of bonds (or angles) for which Mogul statistics could be retrieved, the number of bonds (or angles) that are observed in the model and the number of bonds (or angles) that are defined in the Chemical Component Dictionary. The Link column lists molecule types, if any, to which the group is linked. The Z score for a bond length (or angle) is the number of standard deviations the observed value is removed from the expected value. A bond length (or angle) with $|Z| > 2$ is considered an outlier worth inspection. RMSZ is the root-mean-square of all Z scores of the bond lengths (or angles).

Mol	Type	Chain	Res	Link	Bond lengths			Bond angles		
					Counts	RMSZ	# Z > 2	Counts	RMSZ	# Z > 2
2	PGW	A	907	-	37,37,50	1.09	5 (13%)	40,42,56	1.16	2 (5%)
2	PGW	A	905	-	31,31,50	1.17	4 (12%)	34,37,56	1.16	2 (5%)

Mol	Type	Chain	Res	Link	Bond lengths			Bond angles		
					Counts	RMSZ	# Z > 2	Counts	RMSZ	# Z > 2
2	PGW	B	801	-	40,40,50	1.05	4 (10%)	43,45,56	1.12	2 (4%)
2	PGW	B	804	-	37,37,50	1.09	5 (13%)	40,42,56	1.15	2 (5%)
2	PGW	B	806	-	36,36,50	1.11	4 (11%)	39,41,56	1.18	2 (5%)
2	PGW	B	808	-	34,34,50	1.16	5 (14%)	37,39,56	1.15	2 (5%)
2	PGW	A	902	-	30,30,50	1.10	4 (13%)	32,32,56	1.21	2 (6%)
2	PGW	A	906	-	30,30,50	1.22	4 (13%)	33,35,56	1.23	2 (6%)
2	PGW	B	807	-	30,30,50	1.10	4 (13%)	32,32,56	1.21	2 (6%)
2	PGW	A	903	-	34,34,50	1.16	5 (14%)	37,39,56	1.15	2 (5%)
2	PGW	B	805	-	33,33,50	1.12	3 (9%)	36,39,56	1.14	2 (5%)
2	PGW	A	901	-	36,36,50	1.11	4 (11%)	39,41,56	1.18	2 (5%)
2	PGW	B	802	-	31,31,50	1.17	4 (12%)	34,37,56	1.17	2 (5%)
2	PGW	A	904	-	40,40,50	1.05	4 (10%)	43,45,56	1.12	2 (4%)
2	PGW	B	803	-	30,30,50	1.22	4 (13%)	33,35,56	1.23	2 (6%)
2	PGW	A	908	-	33,33,50	1.13	3 (9%)	36,39,56	1.14	2 (5%)

In the following table, the Chirals column lists the number of chiral outliers, the number of chiral centers analysed, the number of these observed in the model and the number defined in the Chemical Component Dictionary. Similar counts are reported in the Torsion and Rings columns. '-' means no outliers of that kind were identified.

Mol	Type	Chain	Res	Link	Chirals	Torsions	Rings
2	PGW	A	907	-	-	20/39/39/55	-
2	PGW	A	905	-	-	17/36/36/55	-
2	PGW	B	801	-	-	22/42/42/55	-
2	PGW	B	804	-	-	20/39/39/55	-
2	PGW	B	806	-	-	18/38/38/55	-
2	PGW	B	808	-	-	23/36/36/55	-
2	PGW	A	902	-	-	15/32/32/55	-
2	PGW	A	906	-	-	15/32/32/55	-
2	PGW	B	807	-	-	15/32/32/55	-
2	PGW	A	903	-	-	23/36/36/55	-
2	PGW	B	805	-	-	20/38/38/55	-
2	PGW	A	901	-	-	18/38/38/55	-
2	PGW	B	802	-	-	17/36/36/55	-
2	PGW	A	904	-	-	22/42/42/55	-
2	PGW	B	803	-	-	15/32/32/55	-

Continued on next page...

Continued from previous page...

Mol	Type	Chain	Res	Link	Chirals	Torsions	Rings
2	PGW	A	908	-	-	20/38/38/55	-

All (66) bond length outliers are listed below:

Mol	Chain	Res	Type	Atoms	Z	Observed(Å)	Ideal(Å)
2	B	807	PGW	O01-C1	3.05	1.42	1.34
2	A	902	PGW	O01-C1	3.04	1.42	1.34
2	B	803	PGW	O01-C1	3.03	1.42	1.34
2	A	906	PGW	O01-C1	3.03	1.42	1.34
2	A	901	PGW	O01-C1	3.00	1.42	1.34
2	B	806	PGW	O01-C1	2.99	1.42	1.34
2	A	904	PGW	O01-C1	2.98	1.42	1.34
2	B	801	PGW	O01-C1	2.98	1.42	1.34
2	B	802	PGW	O01-C1	2.93	1.42	1.34
2	A	905	PGW	O01-C1	2.93	1.42	1.34
2	B	805	PGW	O01-C1	2.91	1.42	1.34
2	A	908	PGW	O01-C1	2.90	1.42	1.34
2	A	903	PGW	O01-C1	2.84	1.42	1.34
2	B	808	PGW	O01-C1	2.84	1.42	1.34
2	A	907	PGW	O01-C1	2.83	1.42	1.34
2	B	804	PGW	O01-C1	2.83	1.42	1.34
2	A	903	PGW	O03-C01	-2.56	1.39	1.45
2	B	808	PGW	O03-C01	-2.53	1.39	1.45
2	B	806	PGW	O03-C19	2.51	1.40	1.33
2	A	901	PGW	O03-C19	2.50	1.40	1.33
2	A	907	PGW	O03-C19	2.47	1.40	1.33
2	A	905	PGW	O03-C19	2.47	1.40	1.33
2	B	804	PGW	O03-C19	2.46	1.40	1.33
2	B	802	PGW	O03-C19	2.45	1.40	1.33
2	B	804	PGW	P-O12	2.45	1.63	1.54
2	B	806	PGW	P-O12	2.44	1.63	1.54
2	A	907	PGW	P-O12	2.44	1.63	1.54
2	B	801	PGW	O03-C19	2.43	1.40	1.33
2	A	908	PGW	O03-C19	2.43	1.40	1.33
2	A	901	PGW	P-O12	2.42	1.63	1.54
2	A	904	PGW	O03-C19	2.42	1.40	1.33
2	B	805	PGW	O03-C19	2.41	1.40	1.33
2	A	906	PGW	O03-C19	2.40	1.40	1.33
2	B	803	PGW	P-O12	2.39	1.63	1.54
2	B	803	PGW	O03-C19	2.38	1.40	1.33
2	B	807	PGW	O03-C19	2.38	1.40	1.33
2	A	906	PGW	P-O12	2.37	1.63	1.54

Continued on next page...

Continued from previous page...

Mol	Chain	Res	Type	Atoms	Z	Observed(Å)	Ideal(Å)
2	A	902	PGW	O03-C19	2.36	1.40	1.33
2	B	803	PGW	O03-C01	-2.35	1.39	1.45
2	A	902	PGW	O03-C01	-2.35	1.39	1.45
2	B	807	PGW	O03-C01	-2.34	1.39	1.45
2	B	808	PGW	P-O12	2.34	1.63	1.54
2	A	903	PGW	P-O12	2.34	1.63	1.54
2	A	908	PGW	O03-C01	-2.34	1.39	1.45
2	A	906	PGW	O03-C01	-2.33	1.40	1.45
2	B	805	PGW	O03-C01	-2.33	1.40	1.45
2	B	806	PGW	O03-C01	-2.33	1.40	1.45
2	A	901	PGW	O03-C01	-2.32	1.40	1.45
2	B	802	PGW	O03-C01	-2.31	1.40	1.45
2	A	905	PGW	O03-C01	-2.31	1.40	1.45
2	A	903	PGW	O03-C19	2.28	1.40	1.33
2	B	801	PGW	O03-C01	-2.28	1.40	1.45
2	A	904	PGW	O03-C01	-2.28	1.40	1.45
2	B	808	PGW	O03-C19	2.27	1.40	1.33
2	B	801	PGW	P-O12	2.22	1.63	1.54
2	A	904	PGW	P-O12	2.21	1.63	1.54
2	A	903	PGW	O01-C02	-2.18	1.41	1.46
2	B	804	PGW	O01-C02	-2.17	1.41	1.46
2	A	907	PGW	O01-C02	-2.17	1.41	1.46
2	B	808	PGW	O01-C02	-2.16	1.41	1.46
2	B	804	PGW	O03-C01	-2.13	1.40	1.45
2	A	907	PGW	O03-C01	-2.13	1.40	1.45
2	A	902	PGW	O01-C02	-2.05	1.41	1.46
2	B	802	PGW	O01-C02	-2.04	1.41	1.46
2	A	905	PGW	O01-C02	-2.04	1.41	1.46
2	B	807	PGW	O01-C02	-2.03	1.41	1.46

All (32) bond angle outliers are listed below:

Mol	Chain	Res	Type	Atoms	Z	Observed(°)	Ideal(°)
2	A	905	PGW	O01-C1-C2	4.19	120.55	111.48
2	B	802	PGW	O01-C1-C2	4.18	120.52	111.48
2	B	805	PGW	O01-C1-C2	4.09	120.34	111.48
2	A	908	PGW	O01-C1-C2	4.09	120.34	111.48
2	A	903	PGW	O01-C1-C2	4.05	120.24	111.48
2	B	808	PGW	O01-C1-C2	4.03	120.21	111.48
2	B	803	PGW	O01-C1-C2	3.96	120.04	111.48
2	A	906	PGW	O01-C1-C2	3.95	120.04	111.48
2	B	806	PGW	O01-C1-C2	3.95	120.02	111.48

Continued on next page...

Continued from previous page...

Mol	Chain	Res	Type	Atoms	Z	Observed(°)	Ideal(°)
2	A	901	PGW	O01-C1-C2	3.92	119.97	111.48
2	B	801	PGW	O01-C1-C2	3.81	119.73	111.48
2	A	904	PGW	O01-C1-C2	3.81	119.73	111.48
2	A	907	PGW	O01-C1-C2	3.70	119.49	111.48
2	B	804	PGW	O01-C1-C2	3.69	119.46	111.48
2	A	902	PGW	O01-C1-C2	3.42	118.88	111.48
2	B	807	PGW	O01-C1-C2	3.42	118.87	111.48
2	B	803	PGW	O03-C19-C20	2.74	120.20	111.83
2	A	901	PGW	O03-C19-C20	2.74	120.18	111.83
2	A	906	PGW	O03-C19-C20	2.74	120.18	111.83
2	B	806	PGW	O03-C19-C20	2.72	120.13	111.83
2	A	903	PGW	O03-C19-C20	2.70	120.06	111.83
2	B	808	PGW	O03-C19-C20	2.69	120.05	111.83
2	A	907	PGW	O03-C19-C20	2.65	119.92	111.83
2	B	804	PGW	O03-C19-C20	2.65	119.91	111.83
2	A	904	PGW	O03-C19-C20	2.62	119.83	111.83
2	B	801	PGW	O03-C19-C20	2.61	119.81	111.83
2	B	802	PGW	O03-C19-C20	2.58	119.71	111.83
2	A	902	PGW	O03-C19-C20	2.58	119.70	111.83
2	A	905	PGW	O03-C19-C20	2.57	119.68	111.83
2	B	807	PGW	O03-C19-C20	2.57	119.68	111.83
2	B	805	PGW	O03-C19-C20	2.56	119.64	111.83
2	A	908	PGW	O03-C19-C20	2.55	119.61	111.83

There are no chirality outliers.

All (300) torsion outliers are listed below:

Mol	Chain	Res	Type	Atoms
2	B	801	PGW	C03-O11-P-O12
2	B	801	PGW	C03-O11-P-O13
2	B	802	PGW	C04-O12-P-O11
2	B	802	PGW	C04-O12-P-O13
2	B	802	PGW	C2-C1-O01-C02
2	B	802	PGW	O12-C04-C05-OAF
2	B	803	PGW	C03-O11-P-O12
2	B	805	PGW	C03-O11-P-O13
2	B	805	PGW	C04-O12-P-O11
2	B	806	PGW	C03-O11-P-O12
2	B	806	PGW	C03-O11-P-O13
2	B	806	PGW	C2-C1-O01-C02
2	B	808	PGW	C03-O11-P-O12
2	B	808	PGW	O03-C01-C02-O01

Continued on next page...

Continued from previous page...

Mol	Chain	Res	Type	Atoms
2	A	901	PGW	C03-O11-P-O12
2	A	901	PGW	C03-O11-P-O13
2	A	901	PGW	C2-C1-O01-C02
2	A	903	PGW	C03-O11-P-O12
2	A	903	PGW	O03-C01-C02-O01
2	A	904	PGW	C03-O11-P-O12
2	A	904	PGW	C03-O11-P-O13
2	A	905	PGW	C04-O12-P-O11
2	A	905	PGW	C04-O12-P-O13
2	A	905	PGW	C2-C1-O01-C02
2	A	905	PGW	O12-C04-C05-OAF
2	A	906	PGW	C03-O11-P-O12
2	A	908	PGW	C03-O11-P-O13
2	A	908	PGW	C04-O12-P-O11
2	B	806	PGW	O04-C19-O03-C01
2	A	901	PGW	O04-C19-O03-C01
2	B	802	PGW	O02-C1-O01-C02
2	B	806	PGW	O02-C1-O01-C02
2	A	901	PGW	O02-C1-O01-C02
2	A	905	PGW	O02-C1-O01-C02
2	B	806	PGW	C20-C19-O03-C01
2	A	901	PGW	C20-C19-O03-C01
2	B	802	PGW	O12-C04-C05-CAD
2	B	805	PGW	O12-C04-C05-CAD
2	A	905	PGW	O12-C04-C05-CAD
2	A	908	PGW	O12-C04-C05-CAD
2	B	801	PGW	C20-C19-O03-C01
2	A	904	PGW	C20-C19-O03-C01
2	B	804	PGW	O03-C01-C02-O01
2	A	907	PGW	O03-C01-C02-O01
2	B	802	PGW	OAF-C05-CAD-OAE
2	A	905	PGW	OAF-C05-CAD-OAE
2	B	807	PGW	C19-C20-C21-C22
2	A	902	PGW	C19-C20-C21-C22
2	B	805	PGW	C02-C03-O11-P
2	A	908	PGW	C02-C03-O11-P
2	B	801	PGW	C19-C20-C21-C22
2	B	804	PGW	C19-C20-C21-C22
2	B	806	PGW	C1-C2-C3-C4
2	A	901	PGW	C1-C2-C3-C4
2	A	904	PGW	C19-C20-C21-C22
2	A	907	PGW	C19-C20-C21-C22

Continued on next page...

Continued from previous page...

Mol	Chain	Res	Type	Atoms
2	B	805	PGW	O12-C04-C05-OAF
2	A	908	PGW	O12-C04-C05-OAF
2	B	801	PGW	O04-C19-O03-C01
2	A	904	PGW	O04-C19-O03-C01
2	B	805	PGW	C19-C20-C21-C22
2	A	908	PGW	C19-C20-C21-C22
2	B	805	PGW	C2-C1-O01-C02
2	A	908	PGW	C2-C1-O01-C02
2	B	805	PGW	O02-C1-O01-C02
2	A	908	PGW	O02-C1-O01-C02
2	B	801	PGW	C10-C06-C07-C08
2	A	904	PGW	C10-C06-C07-C08
2	B	802	PGW	C04-C05-CAD-OAE
2	B	805	PGW	C04-C05-CAD-OAE
2	A	905	PGW	C04-C05-CAD-OAE
2	A	908	PGW	C04-C05-CAD-OAE
2	B	807	PGW	C20-C19-O03-C01
2	A	902	PGW	C20-C19-O03-C01
2	B	801	PGW	C21-C22-C23-C24
2	B	806	PGW	C3-C4-C5-C6
2	B	808	PGW	C21-C22-C23-C24
2	A	901	PGW	C3-C4-C5-C6
2	A	903	PGW	C21-C22-C23-C24
2	A	904	PGW	C21-C22-C23-C24
2	B	803	PGW	C21-C22-C23-C24
2	A	906	PGW	C21-C22-C23-C24
2	B	808	PGW	C2-C3-C4-C5
2	A	903	PGW	C2-C3-C4-C5
2	B	803	PGW	C24-C25-C26-C27
2	A	906	PGW	C24-C25-C26-C27
2	A	901	PGW	C20-C21-C22-C23
2	B	806	PGW	C20-C21-C22-C23
2	B	801	PGW	C5-C6-C7-C8
2	B	803	PGW	C23-C24-C25-C26
2	B	804	PGW	C22-C23-C24-C25
2	A	904	PGW	C5-C6-C7-C8
2	A	907	PGW	C22-C23-C24-C25
2	A	906	PGW	C23-C24-C25-C26
2	B	807	PGW	O04-C19-O03-C01
2	A	902	PGW	O04-C19-O03-C01
2	A	901	PGW	C21-C22-C23-C24
2	B	806	PGW	C21-C22-C23-C24

Continued on next page...

Continued from previous page...

Mol	Chain	Res	Type	Atoms
2	B	808	PGW	C5-C6-C7-C8
2	B	808	PGW	C22-C23-C24-C25
2	A	903	PGW	C5-C6-C7-C8
2	B	803	PGW	C22-C23-C24-C25
2	A	903	PGW	C22-C23-C24-C25
2	A	906	PGW	C22-C23-C24-C25
2	B	801	PGW	C25-C26-C27-C15
2	A	904	PGW	C25-C26-C27-C15
2	A	906	PGW	C2-C3-C4-C5
2	B	803	PGW	C2-C3-C4-C5
2	B	802	PGW	C21-C22-C23-C24
2	A	905	PGW	C21-C22-C23-C24
2	B	803	PGW	C2-C1-O01-C02
2	A	906	PGW	C2-C1-O01-C02
2	B	801	PGW	C17-C18-C28-C30
2	B	808	PGW	C3-C4-C5-C6
2	A	903	PGW	C3-C4-C5-C6
2	A	904	PGW	C17-C18-C28-C30
2	B	807	PGW	C2-C1-O01-C02
2	A	902	PGW	C2-C1-O01-C02
2	B	805	PGW	O03-C01-C02-O01
2	A	908	PGW	O03-C01-C02-O01
2	B	808	PGW	C23-C24-C25-C26
2	A	906	PGW	C5-C6-C7-C8
2	A	903	PGW	C23-C24-C25-C26
2	B	803	PGW	C5-C6-C7-C8
2	B	807	PGW	C23-C24-C25-C26
2	A	902	PGW	C23-C24-C25-C26
2	B	801	PGW	C01-C02-C03-O11
2	A	904	PGW	C01-C02-C03-O11
2	B	803	PGW	O02-C1-O01-C02
2	A	906	PGW	O02-C1-O01-C02
2	B	801	PGW	C20-C21-C22-C23
2	A	904	PGW	C20-C21-C22-C23
2	B	802	PGW	O03-C01-C02-C03
2	B	804	PGW	O03-C01-C02-C03
2	B	807	PGW	O03-C01-C02-C03
2	B	808	PGW	O03-C01-C02-C03
2	A	902	PGW	O03-C01-C02-C03
2	A	903	PGW	O03-C01-C02-C03
2	A	905	PGW	O03-C01-C02-C03
2	A	907	PGW	O03-C01-C02-C03

Continued on next page...

Continued from previous page...

Mol	Chain	Res	Type	Atoms
2	B	807	PGW	C25-C26-C27-C15
2	B	801	PGW	C03-O11-P-O14
2	B	806	PGW	C03-O11-P-O14
2	A	901	PGW	C03-O11-P-O14
2	A	904	PGW	C03-O11-P-O14
2	A	902	PGW	C25-C26-C27-C15
2	B	804	PGW	C6-C7-C8-C9
2	B	807	PGW	C6-C7-C8-C9
2	A	902	PGW	C6-C7-C8-C9
2	A	907	PGW	C6-C7-C8-C9
2	B	802	PGW	C23-C24-C25-C26
2	A	905	PGW	C23-C24-C25-C26
2	B	806	PGW	C22-C23-C24-C25
2	A	901	PGW	C22-C23-C24-C25
2	B	807	PGW	C24-C25-C26-C27
2	A	902	PGW	C24-C25-C26-C27
2	B	805	PGW	OAF-C05-CAD-OAE
2	A	908	PGW	OAF-C05-CAD-OAE
2	B	801	PGW	C24-C25-C26-C27
2	A	904	PGW	C24-C25-C26-C27
2	A	902	PGW	O02-C1-O01-C02
2	B	807	PGW	O02-C1-O01-C02
2	B	805	PGW	O03-C01-C02-C03
2	A	908	PGW	O03-C01-C02-C03
2	B	801	PGW	O01-C02-C03-O11
2	B	808	PGW	O01-C02-C03-O11
2	A	903	PGW	O01-C02-C03-O11
2	A	904	PGW	O01-C02-C03-O11
2	B	801	PGW	C3-C4-C5-C6
2	A	904	PGW	C3-C4-C5-C6
2	B	804	PGW	O03-C19-C20-C21
2	A	907	PGW	O03-C19-C20-C21
2	B	803	PGW	C03-O11-P-O13
2	B	808	PGW	C03-O11-P-O13
2	A	903	PGW	C03-O11-P-O13
2	A	906	PGW	C03-O11-P-O13
2	A	904	PGW	C27-C15-C16-C17
2	B	801	PGW	C27-C15-C16-C17
2	B	806	PGW	O01-C02-C03-O11
2	A	901	PGW	O01-C02-C03-O11
2	B	806	PGW	C16-C17-C18-C28
2	A	901	PGW	C16-C17-C18-C28

Continued on next page...

Continued from previous page...

Mol	Chain	Res	Type	Atoms
2	B	802	PGW	O03-C01-C02-O01
2	B	807	PGW	O03-C01-C02-O01
2	A	902	PGW	O03-C01-C02-O01
2	A	905	PGW	O03-C01-C02-O01
2	B	802	PGW	C24-C25-C26-C27
2	A	905	PGW	C24-C25-C26-C27
2	B	806	PGW	C24-C25-C26-C27
2	A	901	PGW	C24-C25-C26-C27
2	B	808	PGW	C19-C20-C21-C22
2	A	903	PGW	C19-C20-C21-C22
2	B	803	PGW	C20-C19-O03-C01
2	A	906	PGW	C20-C19-O03-C01
2	B	808	PGW	C20-C21-C22-C23
2	A	903	PGW	C20-C21-C22-C23
2	B	808	PGW	C01-C02-C03-O11
2	A	903	PGW	C01-C02-C03-O11
2	B	804	PGW	O01-C02-C03-O11
2	A	907	PGW	O01-C02-C03-O11
2	B	805	PGW	C21-C22-C23-C24
2	A	908	PGW	C21-C22-C23-C24
2	B	807	PGW	C7-C8-C9-C10
2	A	902	PGW	C7-C8-C9-C10
2	B	807	PGW	C16-C15-C27-C26
2	A	902	PGW	C16-C15-C27-C26
2	B	803	PGW	O04-C19-O03-C01
2	A	906	PGW	O04-C19-O03-C01
2	B	805	PGW	C03-O11-P-O12
2	B	805	PGW	C03-O11-P-O14
2	B	805	PGW	C04-O12-P-O14
2	A	908	PGW	C03-O11-P-O12
2	A	908	PGW	C03-O11-P-O14
2	A	908	PGW	C04-O12-P-O14
2	B	806	PGW	C6-C7-C8-C9
2	A	901	PGW	C6-C7-C8-C9
2	B	803	PGW	C03-O11-P-O14
2	B	808	PGW	C03-O11-P-O14
2	A	903	PGW	C03-O11-P-O14
2	A	906	PGW	C03-O11-P-O14
2	B	806	PGW	C2-C3-C4-C5
2	A	901	PGW	C2-C3-C4-C5
2	B	808	PGW	C24-C25-C26-C27
2	A	903	PGW	C24-C25-C26-C27

Continued on next page...

Continued from previous page...

Mol	Chain	Res	Type	Atoms
2	B	804	PGW	C01-C02-C03-O11
2	B	806	PGW	C01-C02-C03-O11
2	A	901	PGW	C01-C02-C03-O11
2	A	907	PGW	C01-C02-C03-O11
2	B	802	PGW	C22-C23-C24-C25
2	A	905	PGW	C22-C23-C24-C25
2	A	903	PGW	C7-C8-C9-C10
2	B	808	PGW	C7-C8-C9-C10
2	A	908	PGW	C23-C24-C25-C26
2	B	805	PGW	C23-C24-C25-C26
2	B	804	PGW	C16-C15-C27-C26
2	A	907	PGW	C16-C15-C27-C26
2	B	805	PGW	C2-C3-C4-C5
2	A	908	PGW	C2-C3-C4-C5
2	B	801	PGW	C4-C5-C6-C7
2	A	904	PGW	C4-C5-C6-C7
2	B	804	PGW	C21-C22-C23-C24
2	A	907	PGW	C21-C22-C23-C24
2	B	807	PGW	C22-C23-C24-C25
2	A	902	PGW	C22-C23-C24-C25
2	B	804	PGW	C20-C21-C22-C23
2	A	907	PGW	C20-C21-C22-C23
2	B	803	PGW	O03-C01-C02-C03
2	A	906	PGW	O03-C01-C02-C03
2	A	907	PGW	C27-C15-C16-C17
2	B	804	PGW	C10-C06-C07-C08
2	A	907	PGW	C10-C06-C07-C08
2	B	804	PGW	C27-C15-C16-C17
2	B	804	PGW	O02-C1-O01-C02
2	A	907	PGW	O02-C1-O01-C02
2	B	804	PGW	C07-C06-C10-C9
2	A	907	PGW	C07-C06-C10-C9
2	B	803	PGW	C3-C4-C5-C6
2	A	906	PGW	C3-C4-C5-C6
2	B	808	PGW	C07-C06-C10-C9
2	A	903	PGW	C07-C06-C10-C9
2	B	808	PGW	O03-C19-C20-C21
2	A	903	PGW	O03-C19-C20-C21
2	A	904	PGW	C16-C15-C27-C26
2	A	907	PGW	C2-C1-O01-C02
2	B	801	PGW	C16-C15-C27-C26
2	B	808	PGW	O01-C1-C2-C3

Continued on next page...

Continued from previous page...

Mol	Chain	Res	Type	Atoms
2	A	903	PGW	O01-C1-C2-C3
2	B	804	PGW	O04-C19-C20-C21
2	A	907	PGW	O04-C19-C20-C21
2	B	801	PGW	O01-C1-C2-C3
2	B	805	PGW	O01-C1-C2-C3
2	A	904	PGW	O01-C1-C2-C3
2	A	908	PGW	O01-C1-C2-C3
2	B	804	PGW	C2-C1-O01-C02
2	B	804	PGW	C2-C3-C4-C5
2	A	907	PGW	C2-C3-C4-C5
2	B	802	PGW	O03-C19-C20-C21
2	B	804	PGW	C24-C25-C26-C27
2	A	907	PGW	C24-C25-C26-C27
2	A	905	PGW	O03-C19-C20-C21
2	B	808	PGW	C6-C7-C8-C9
2	A	903	PGW	C6-C7-C8-C9
2	B	801	PGW	O02-C1-C2-C3
2	A	904	PGW	O02-C1-C2-C3
2	B	805	PGW	O02-C1-C2-C3
2	A	908	PGW	O02-C1-C2-C3
2	B	801	PGW	C23-C24-C25-C26
2	A	904	PGW	C23-C24-C25-C26
2	B	808	PGW	O04-C19-C20-C21
2	A	903	PGW	O04-C19-C20-C21
2	B	808	PGW	O02-C1-C2-C3
2	A	903	PGW	O02-C1-C2-C3
2	A	905	PGW	O01-C1-C2-C3
2	A	905	PGW	O04-C19-C20-C21
2	B	802	PGW	O01-C1-C2-C3
2	A	907	PGW	C06-C07-C08-C09
2	B	802	PGW	O04-C19-C20-C21
2	B	804	PGW	C06-C07-C08-C09
2	B	807	PGW	O01-C1-C2-C3
2	A	902	PGW	O01-C1-C2-C3

There are no ring outliers.

8 monomers are involved in 23 short contacts:

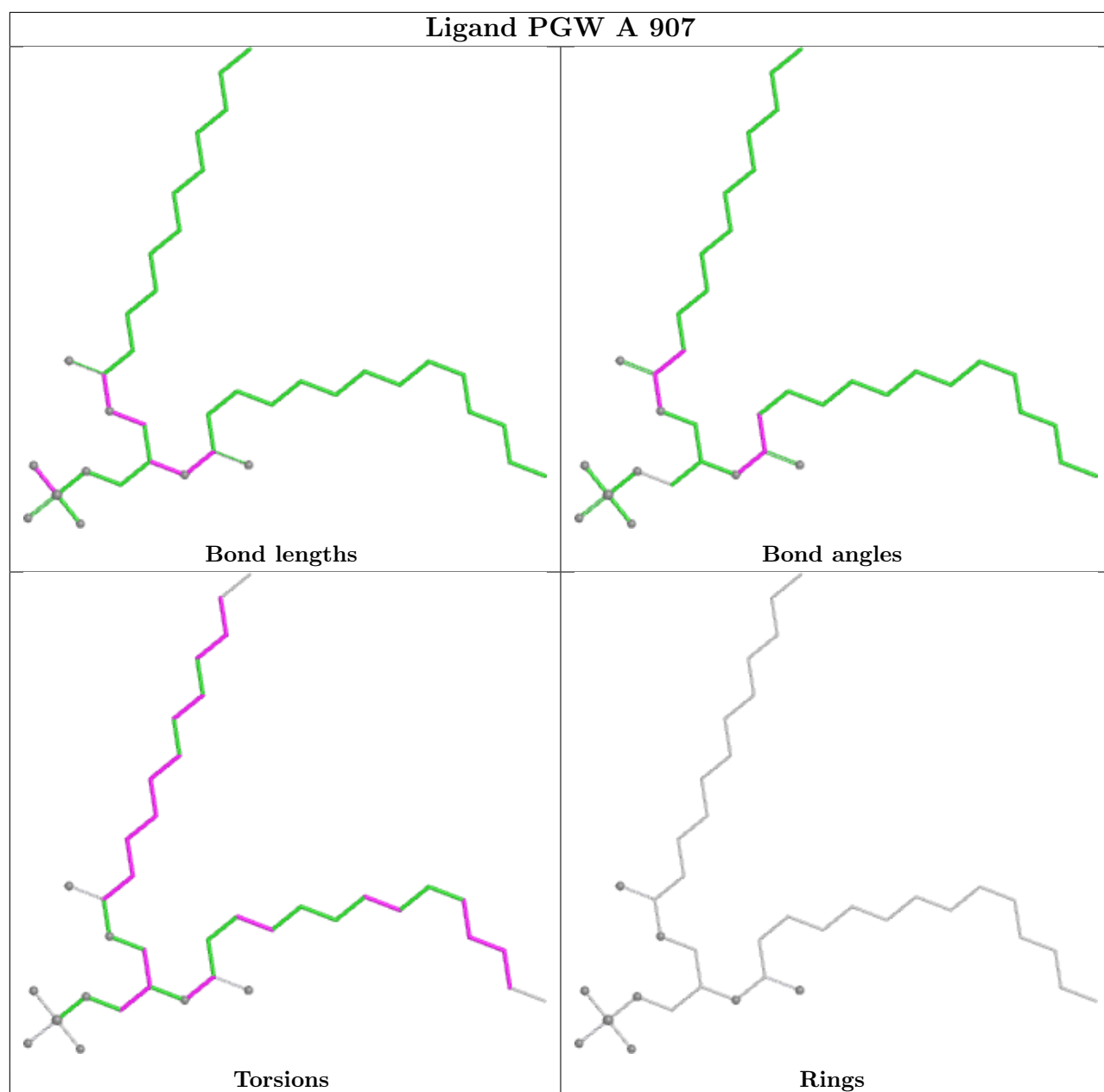
Mol	Chain	Res	Type	Clashes	Symm-Clashes
2	B	801	PGW	4	0
2	B	806	PGW	3	0
2	B	808	PGW	2	0

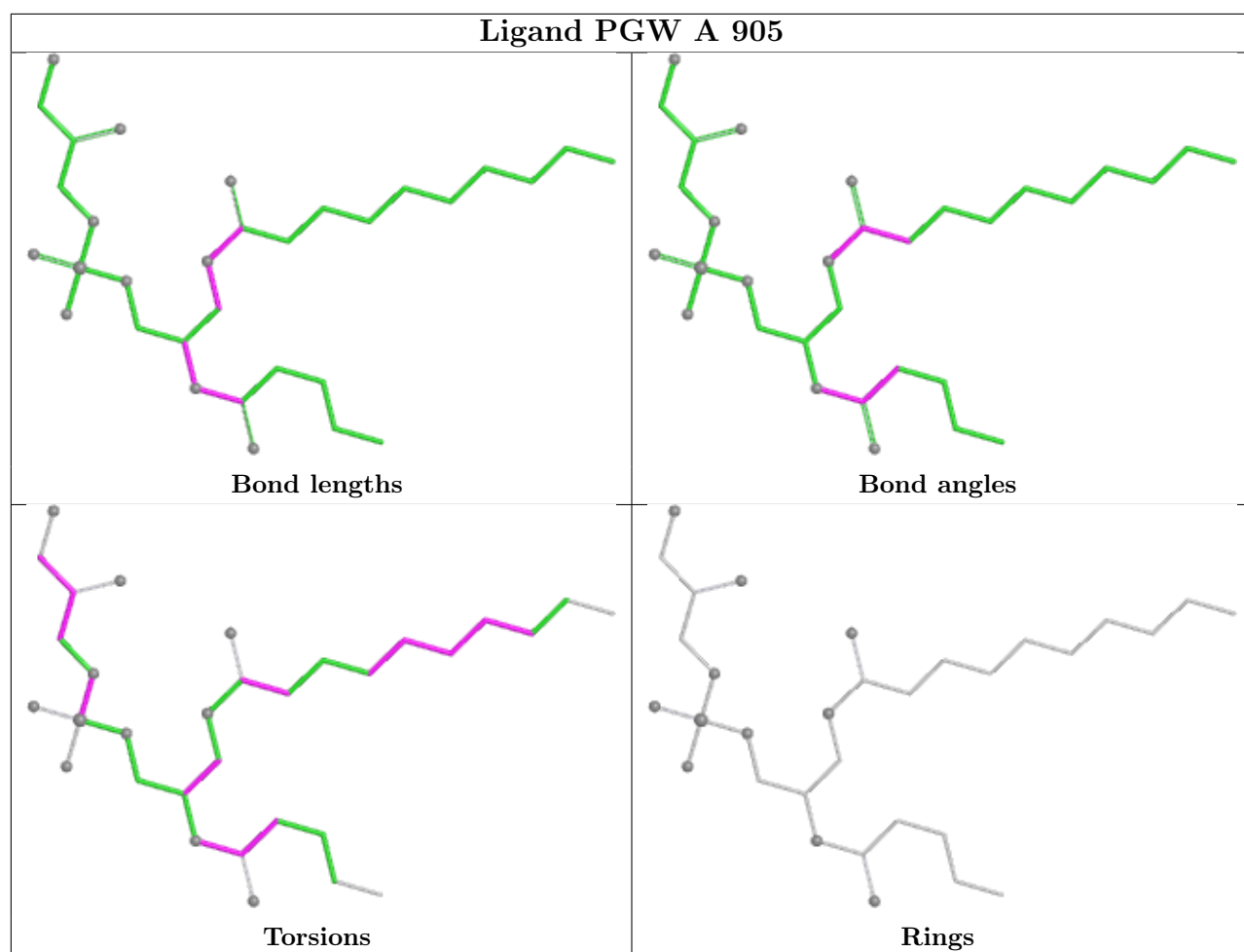
Continued on next page...

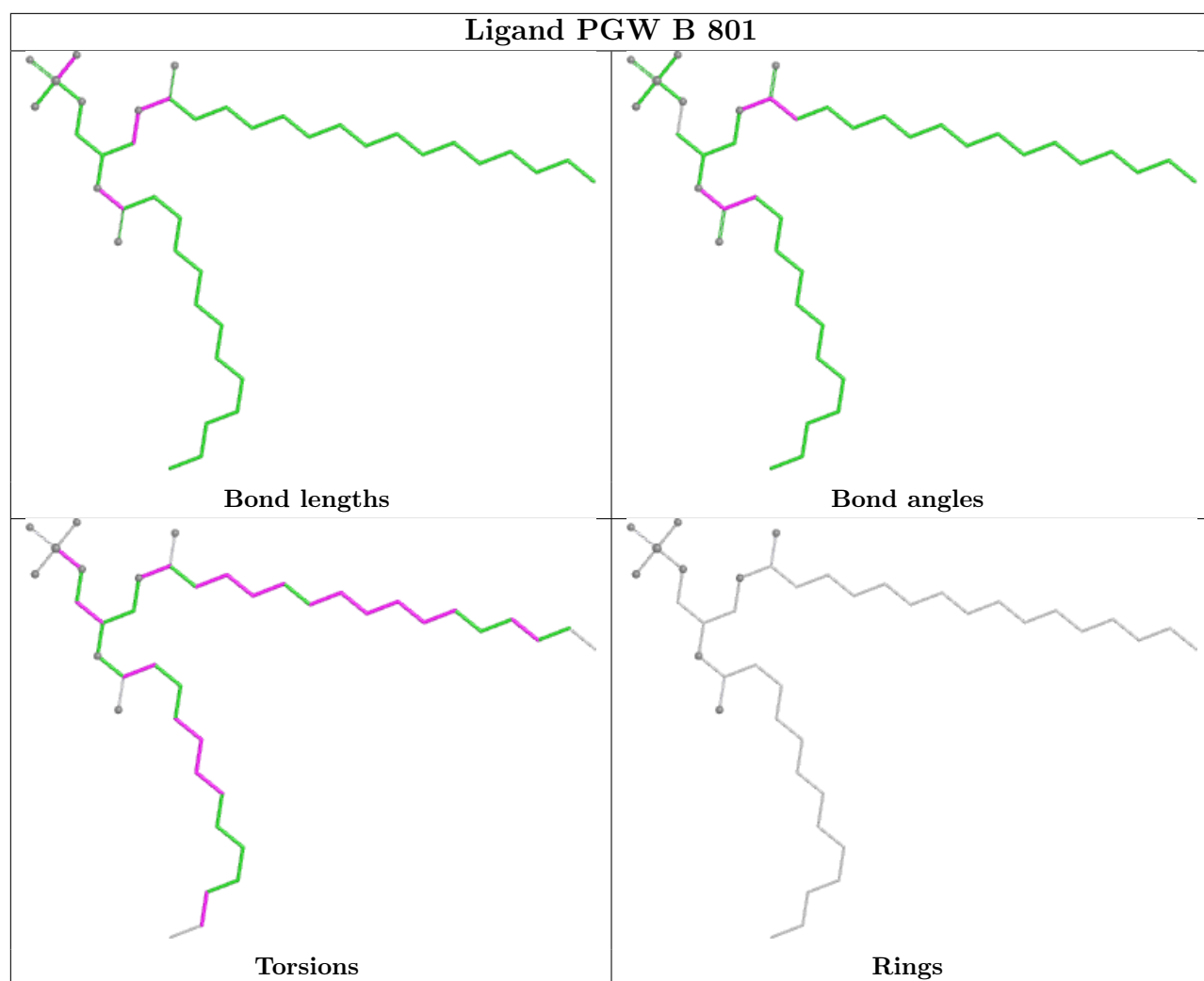
Continued from previous page...

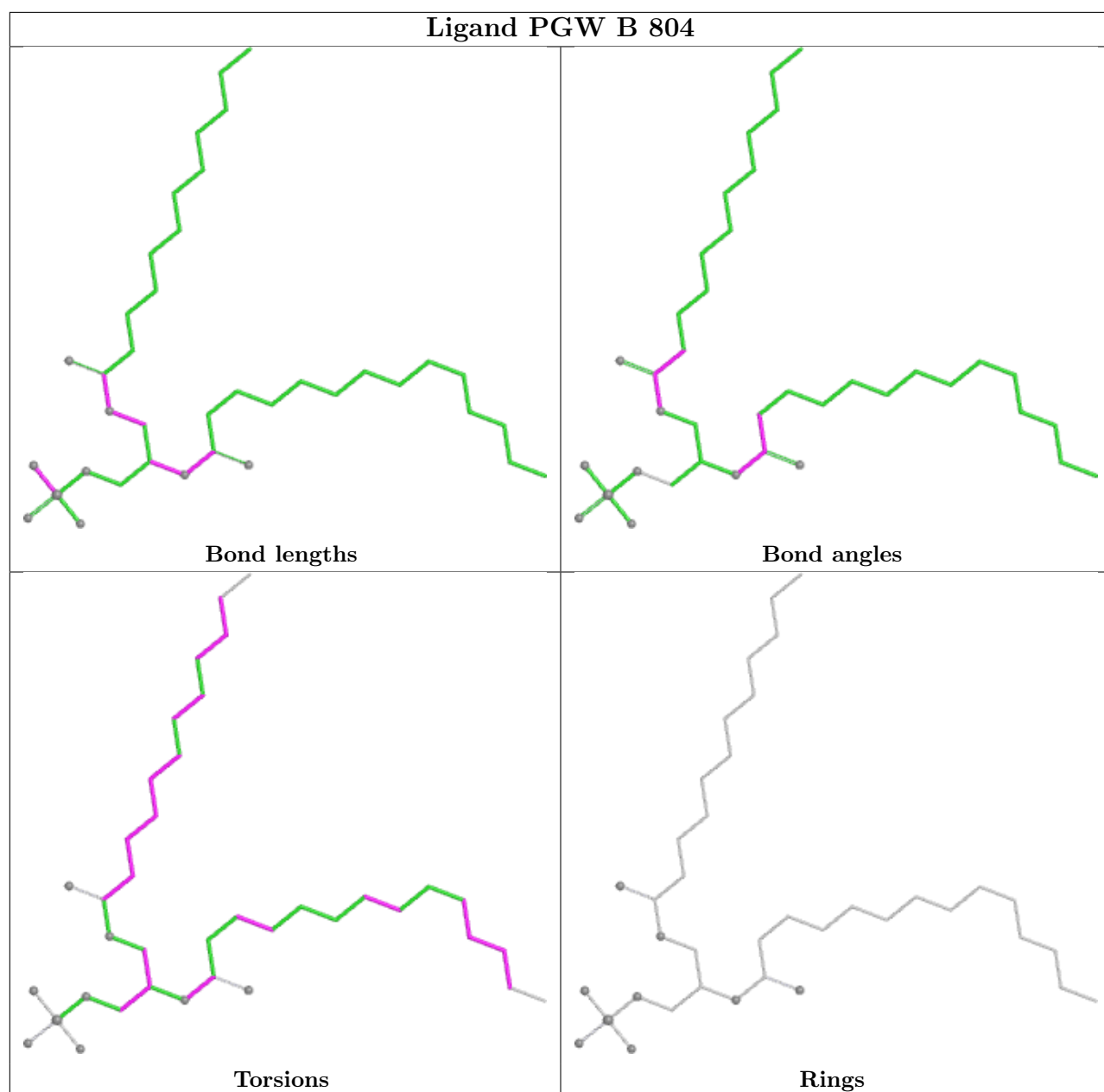
Mol	Chain	Res	Type	Clashes	Symm-Clashes
2	A	902	PGW	5	0
2	B	807	PGW	4	0
2	A	903	PGW	2	0
2	A	901	PGW	3	0
2	A	904	PGW	4	0

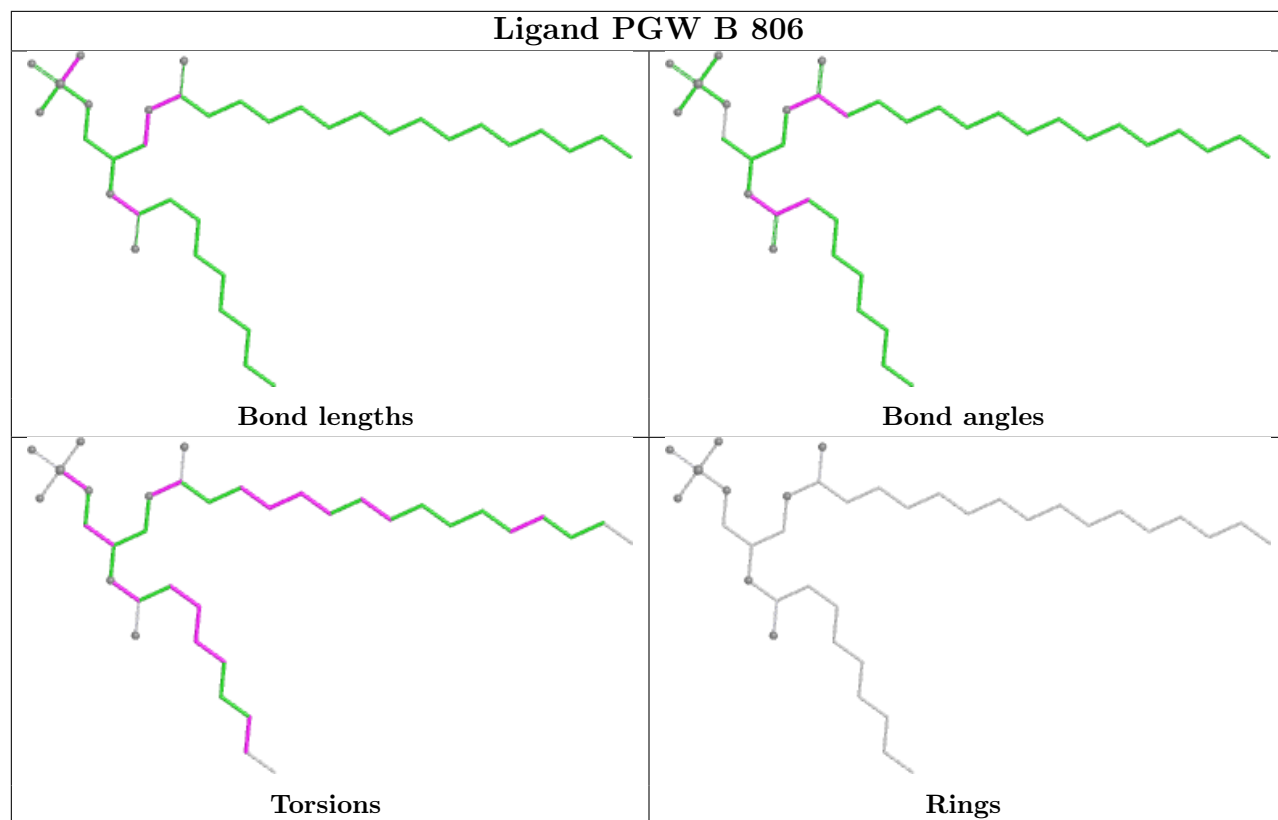
The following is a two-dimensional graphical depiction of Mogul quality analysis of bond lengths, bond angles, torsion angles, and ring geometry for all instances of the Ligand of Interest. In addition, ligands with molecular weight > 250 and outliers as shown on the validation Tables will also be included. For torsion angles, if less than 5% of the Mogul distribution of torsion angles is within 10 degrees of the torsion angle in question, then that torsion angle is considered an outlier. Any bond that is central to one or more torsion angles identified as an outlier by Mogul will be highlighted in the graph. For rings, the root-mean-square deviation (RMSD) between the ring in question and similar rings identified by Mogul is calculated over all ring torsion angles. If the average RMSD is greater than 60 degrees and the minimal RMSD between the ring in question and any Mogul-identified rings is also greater than 60 degrees, then that ring is considered an outlier. The outliers are highlighted in purple. The color gray indicates Mogul did not find sufficient equivalents in the CSD to analyse the geometry.

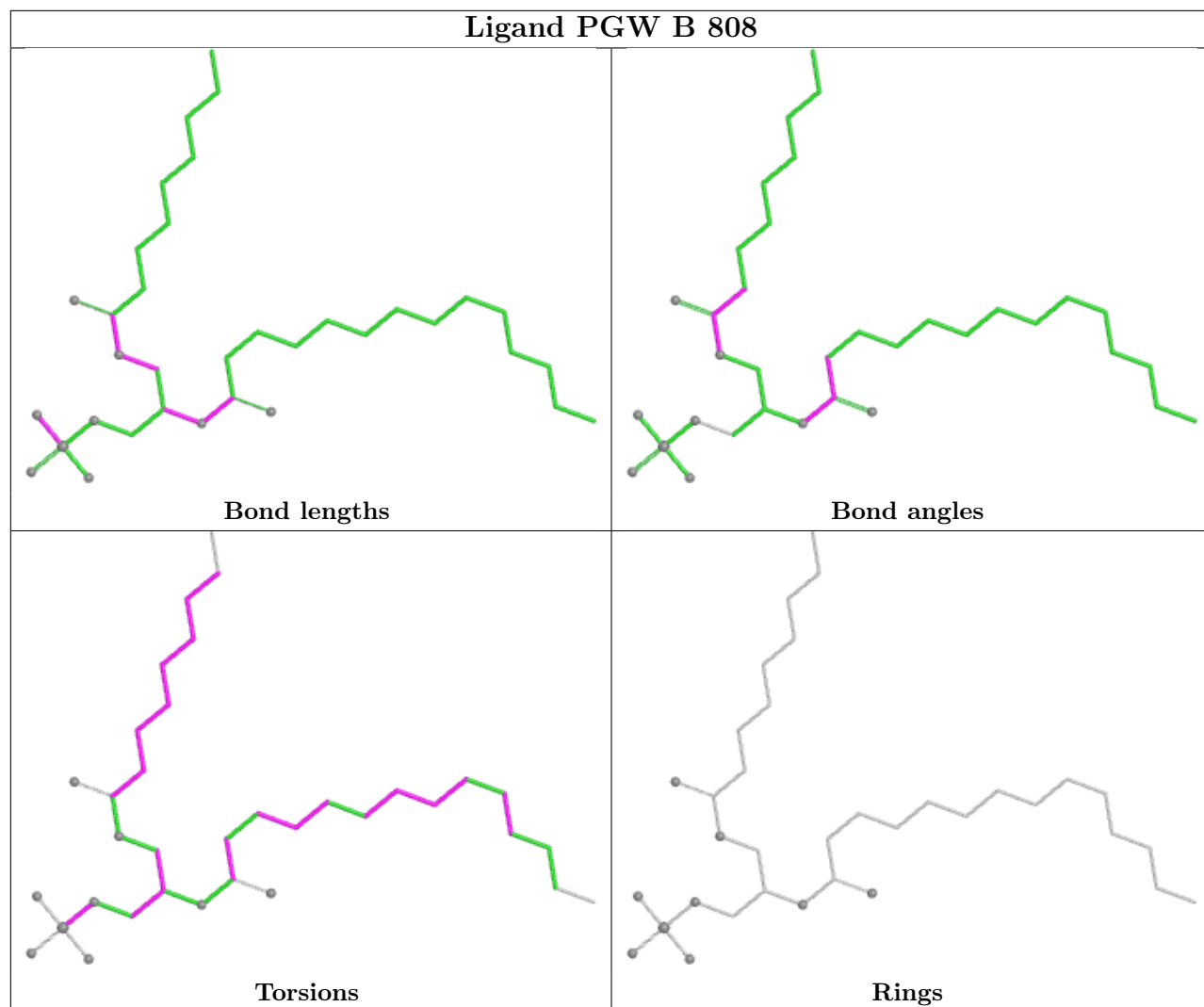


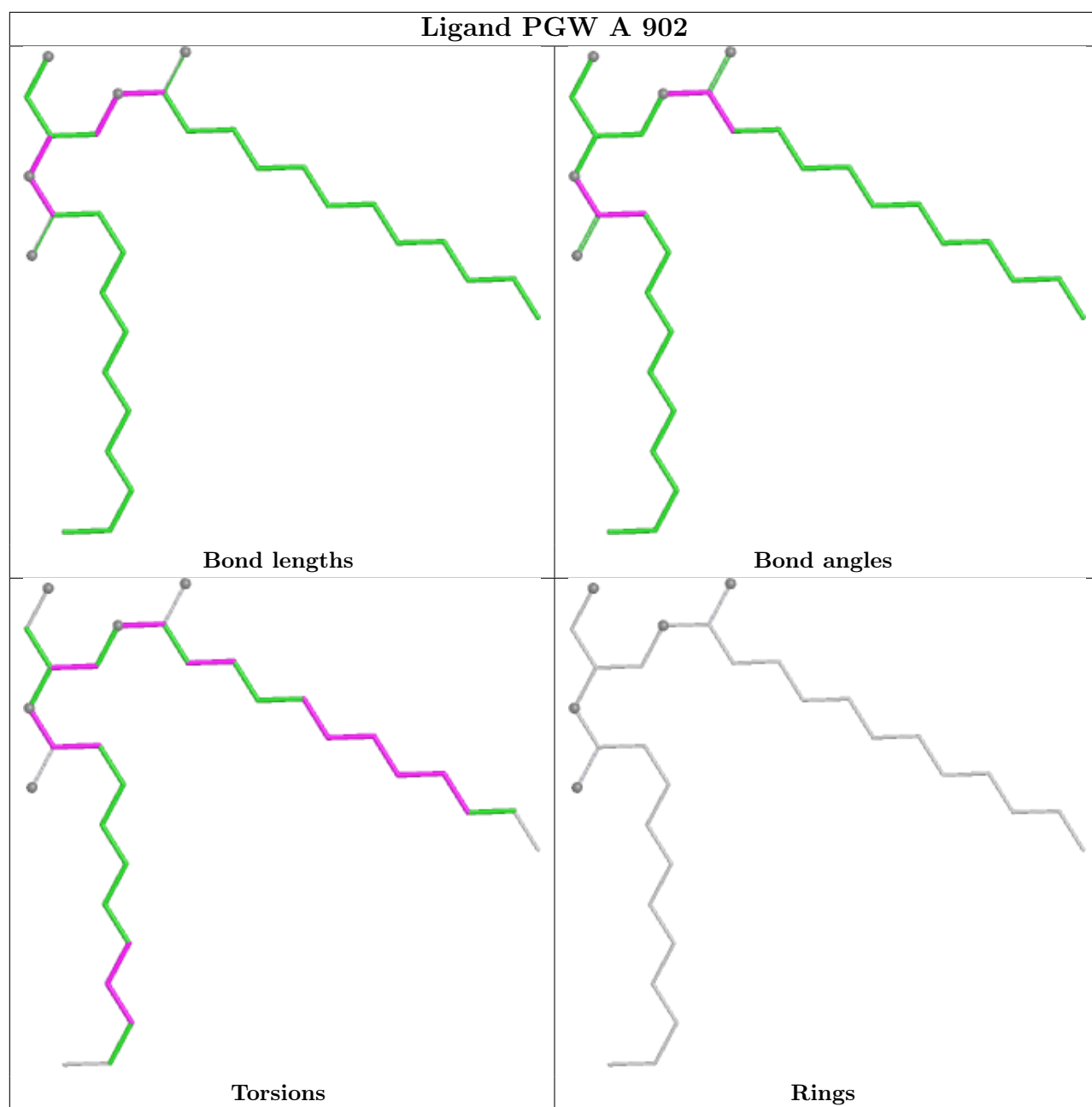


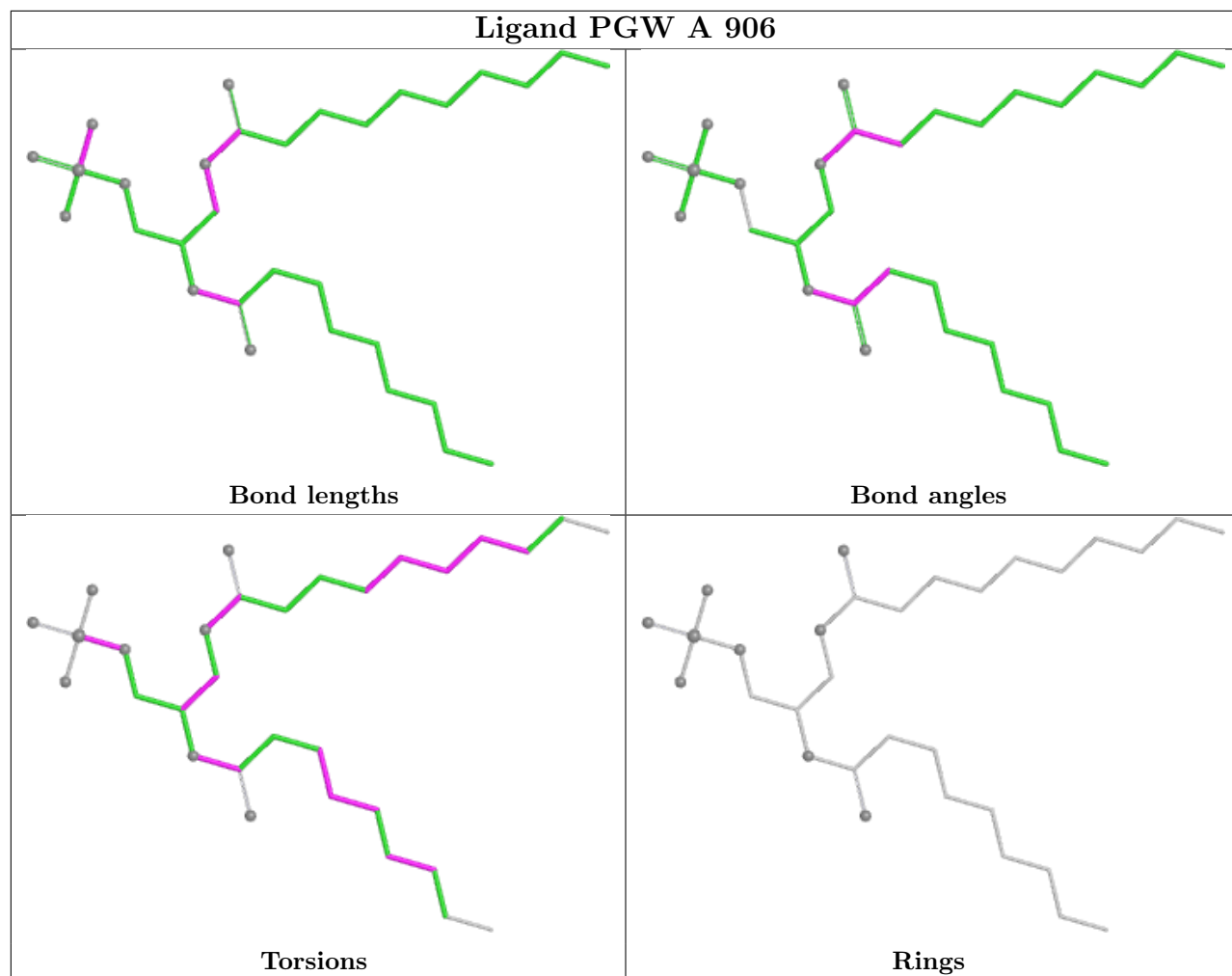


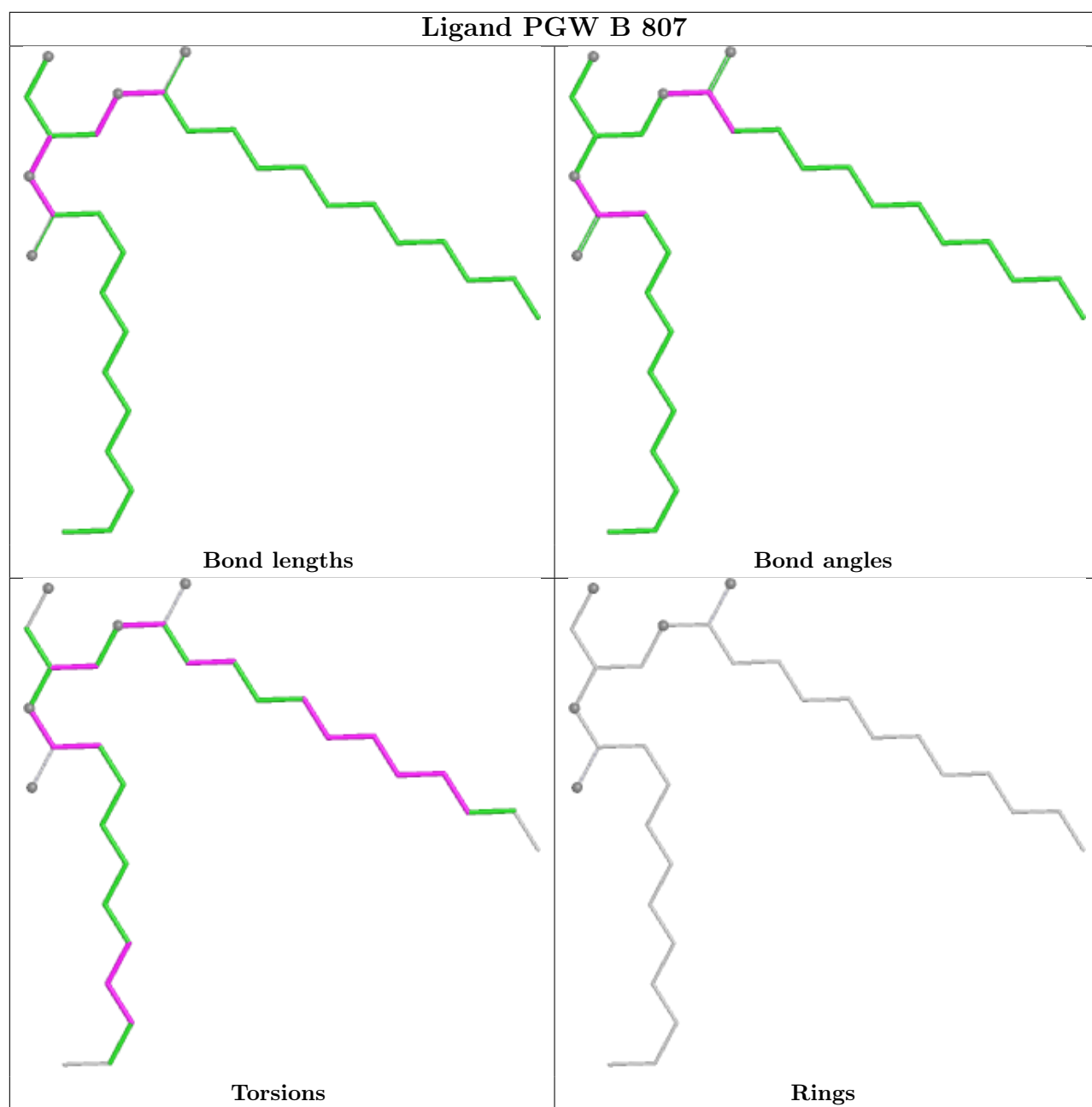


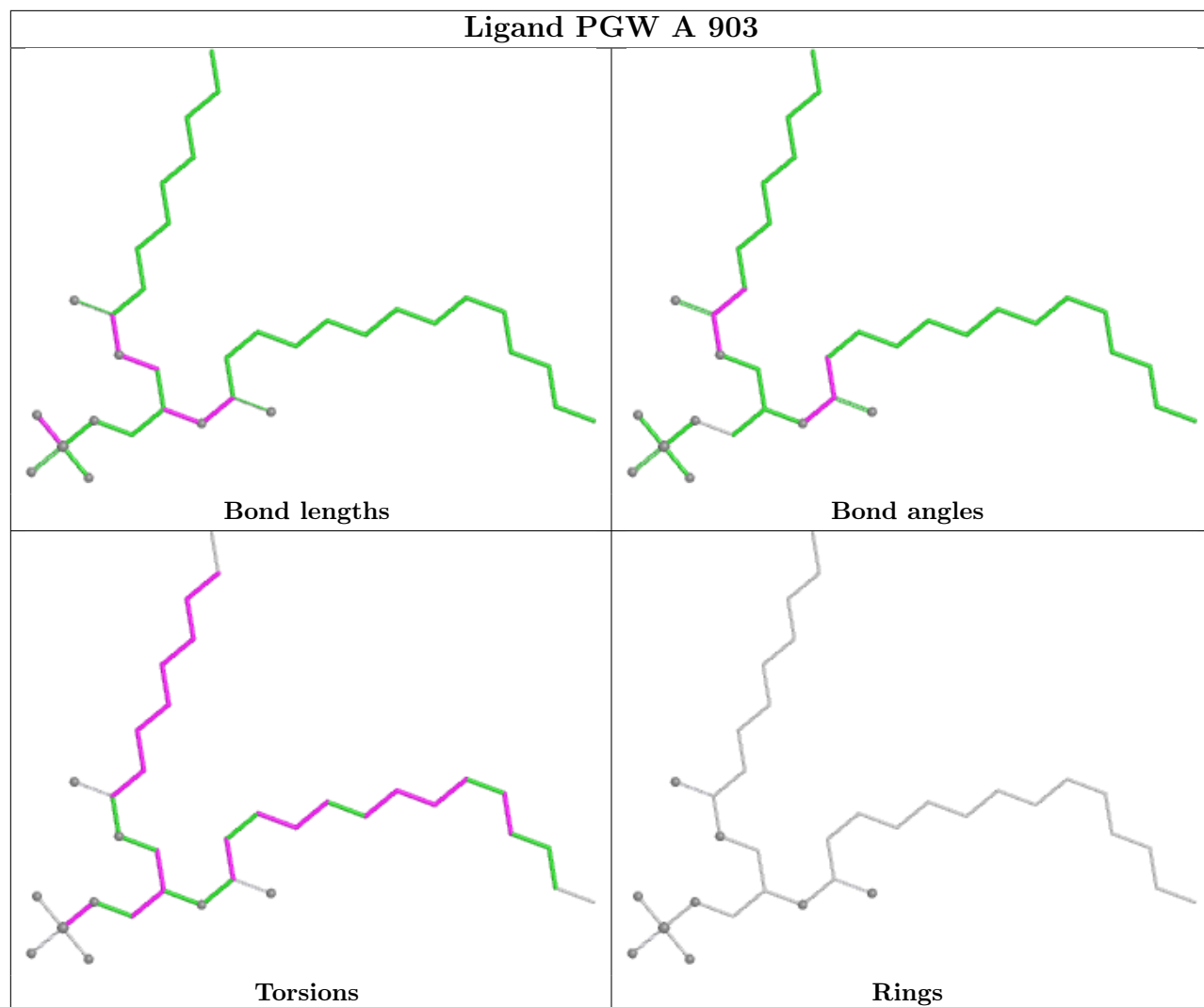


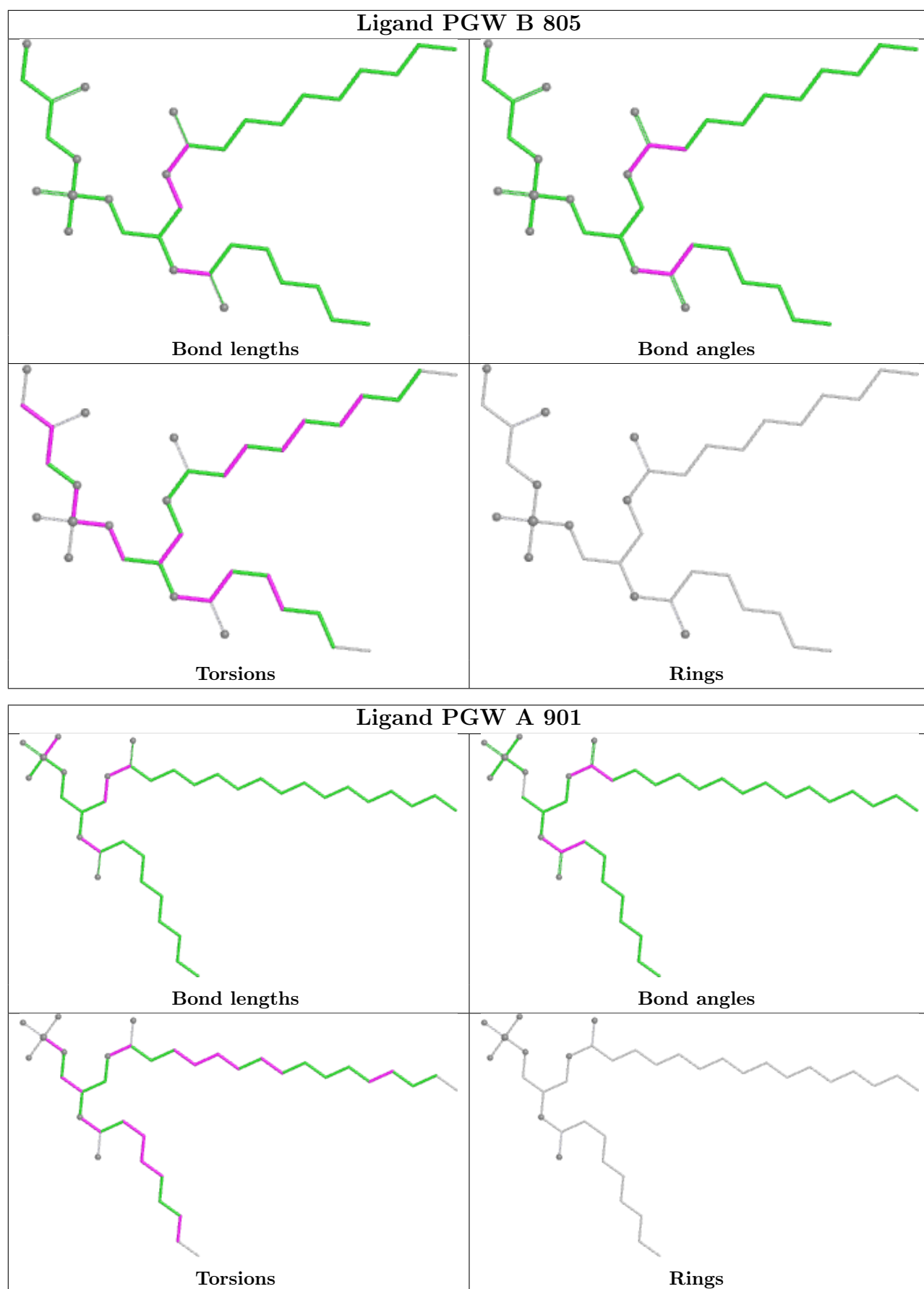


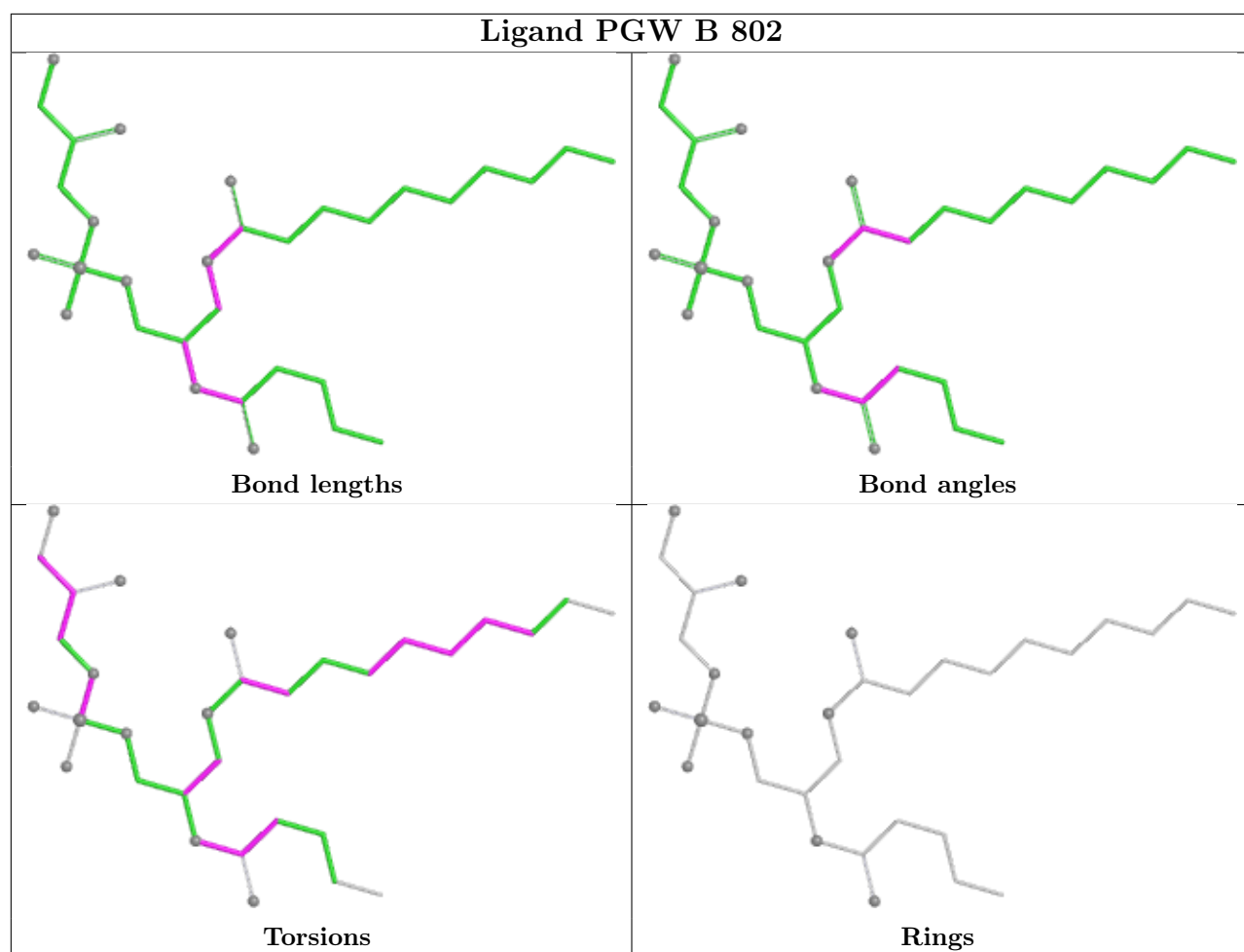


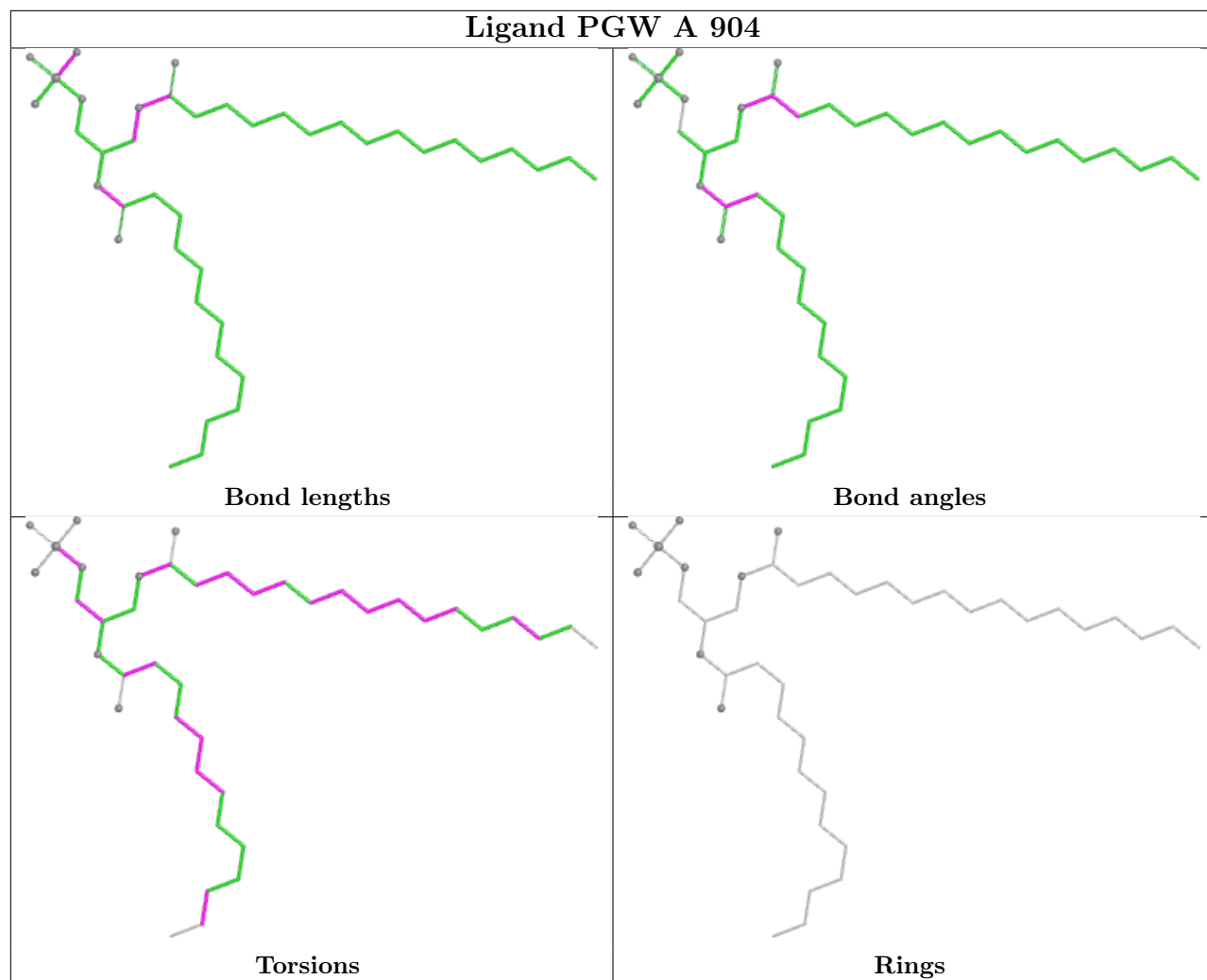


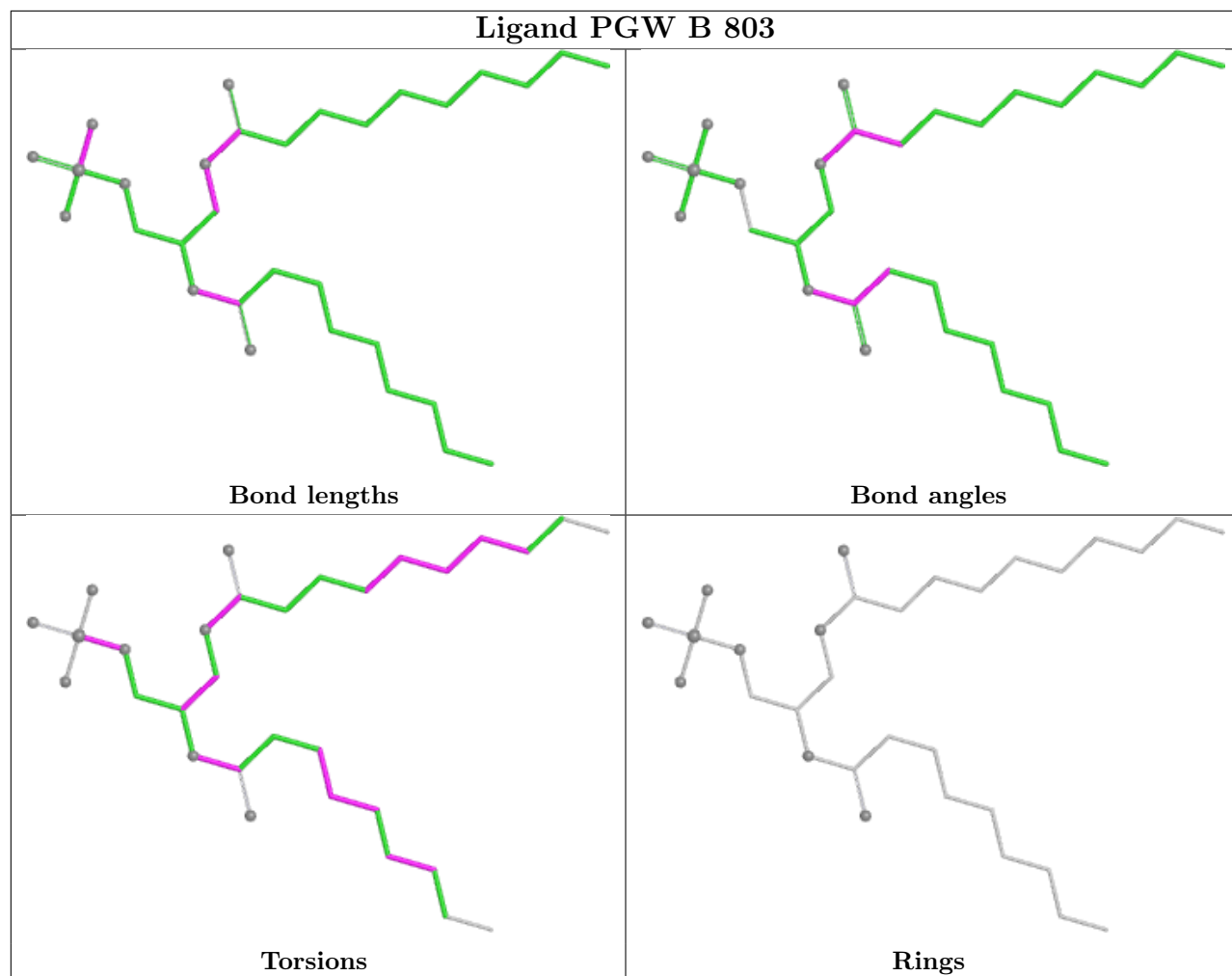


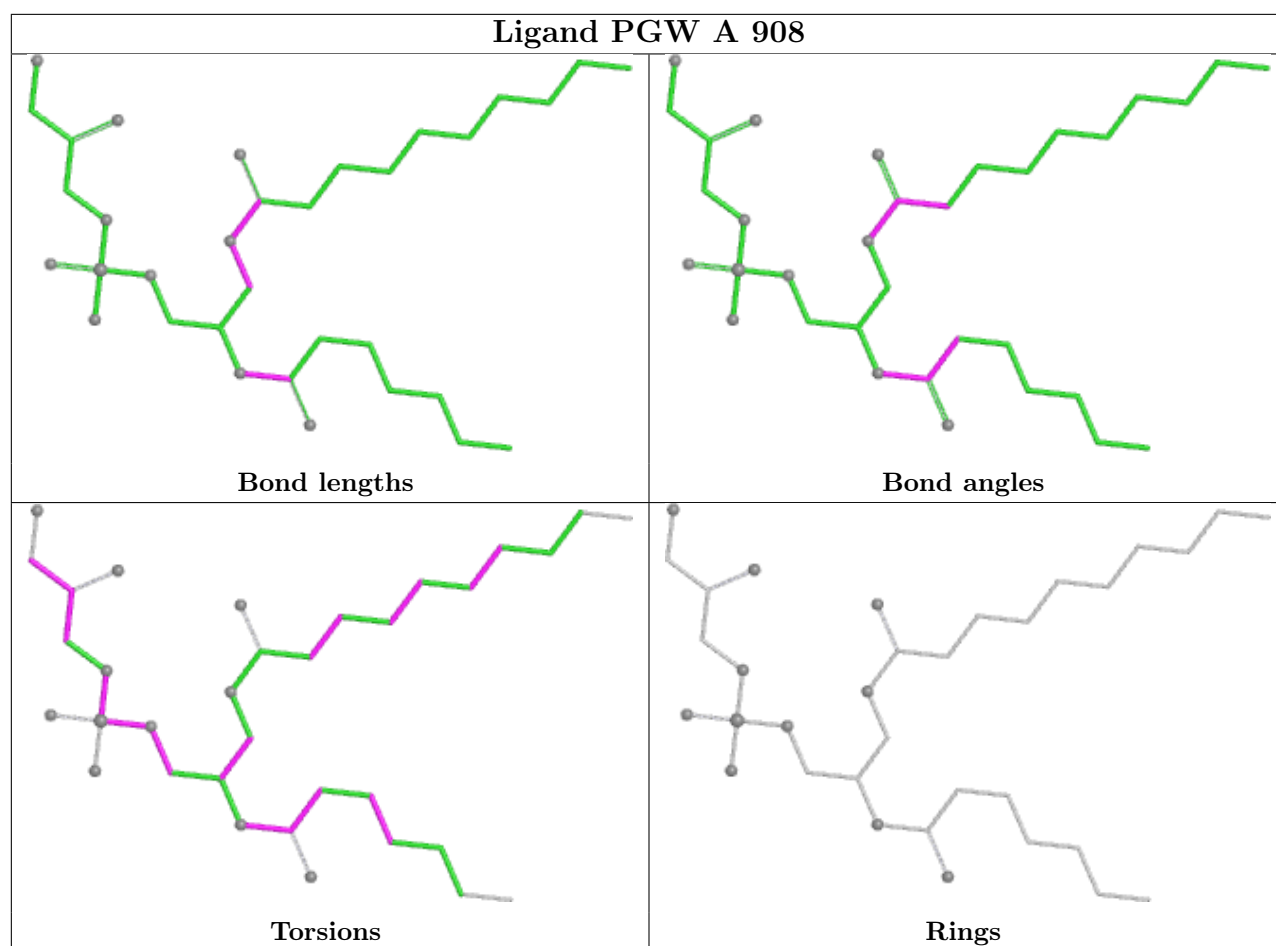












5.7 Other polymers [i](#)

There are no such residues in this entry.

5.8 Polymer linkage issues [i](#)

There are no chain breaks in this entry.

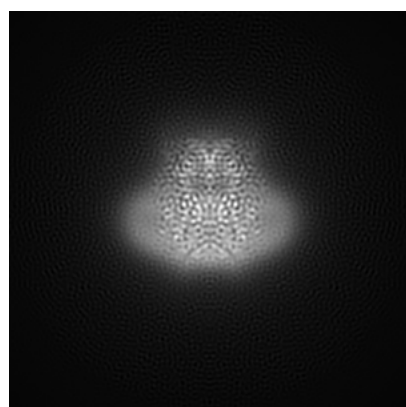
6 Map visualisation [i](#)

This section contains visualisations of the EMDB entry EMD-24723. These allow visual inspection of the internal detail of the map and identification of artifacts.

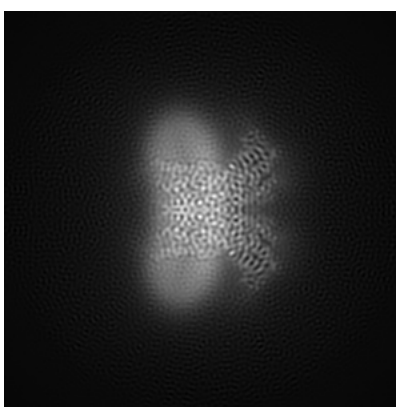
No raw map or half-maps were deposited for this entry and therefore no images, graphs, etc. pertaining to the raw map can be shown.

6.1 Orthogonal projections [i](#)

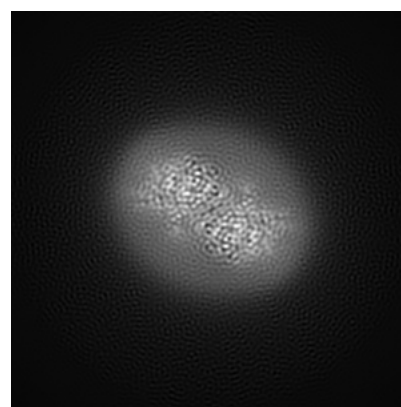
6.1.1 Primary map



X



Y

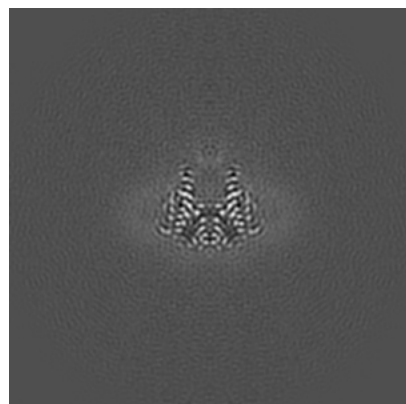


Z

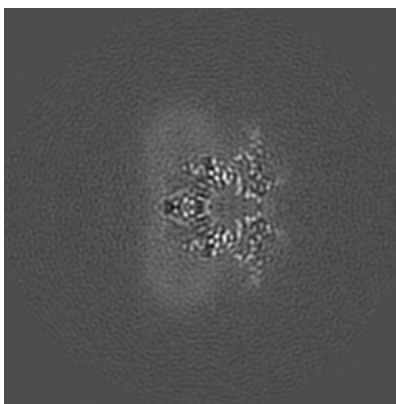
The images above show the map projected in three orthogonal directions.

6.2 Central slices [i](#)

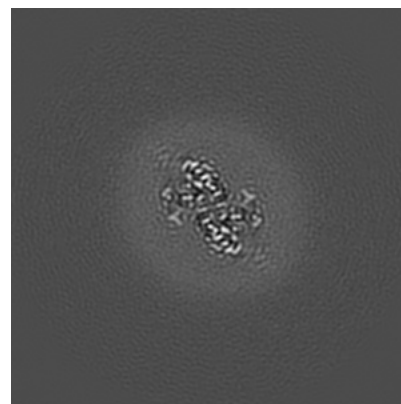
6.2.1 Primary map



X Index: 128



Y Index: 128

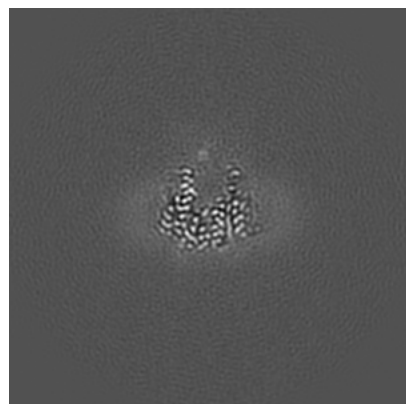


Z Index: 128

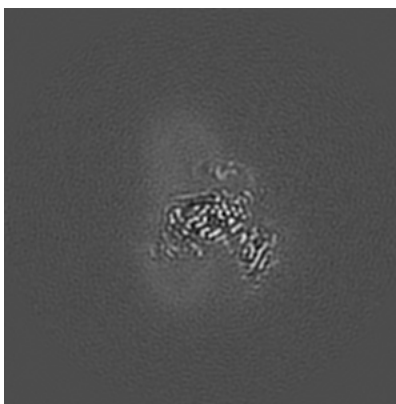
The images above show central slices of the map in three orthogonal directions.

6.3 Largest variance slices [i](#)

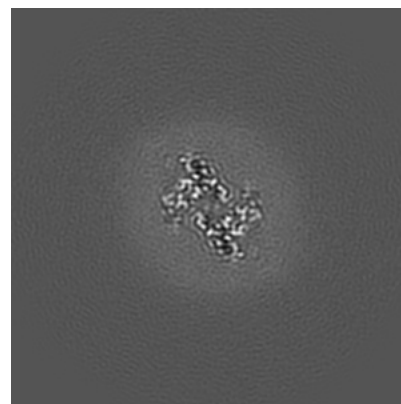
6.3.1 Primary map



X Index: 130



Y Index: 142

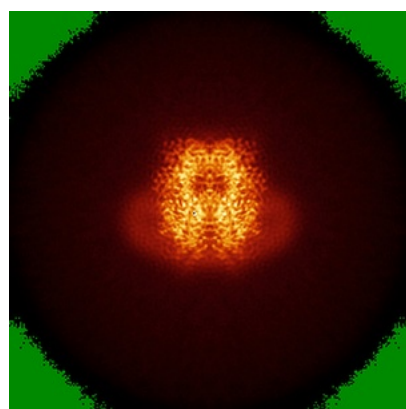


Z Index: 131

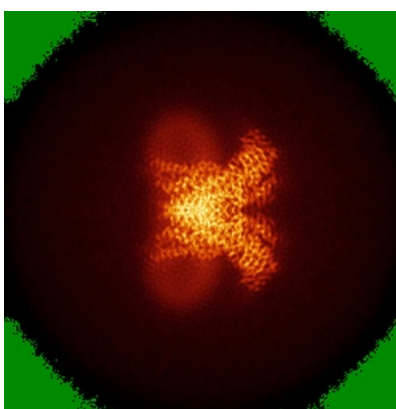
The images above show the largest variance slices of the map in three orthogonal directions.

6.4 Orthogonal standard-deviation projections (False-color) [i](#)

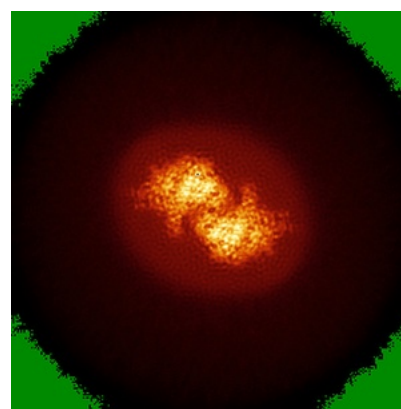
6.4.1 Primary map



X



Y



Z

The images above show the map standard deviation projections with false color in three orthogonal directions. Minimum values are shown in green, max in blue, and dark to light orange shades represent small to large values respectively.

6.5 Orthogonal surface views [i](#)

6.5.1 Primary map



The images above show the 3D surface view of the map at the recommended contour level 0.037. These images, in conjunction with the slice images, may facilitate assessment of whether an appropriate contour level has been provided.

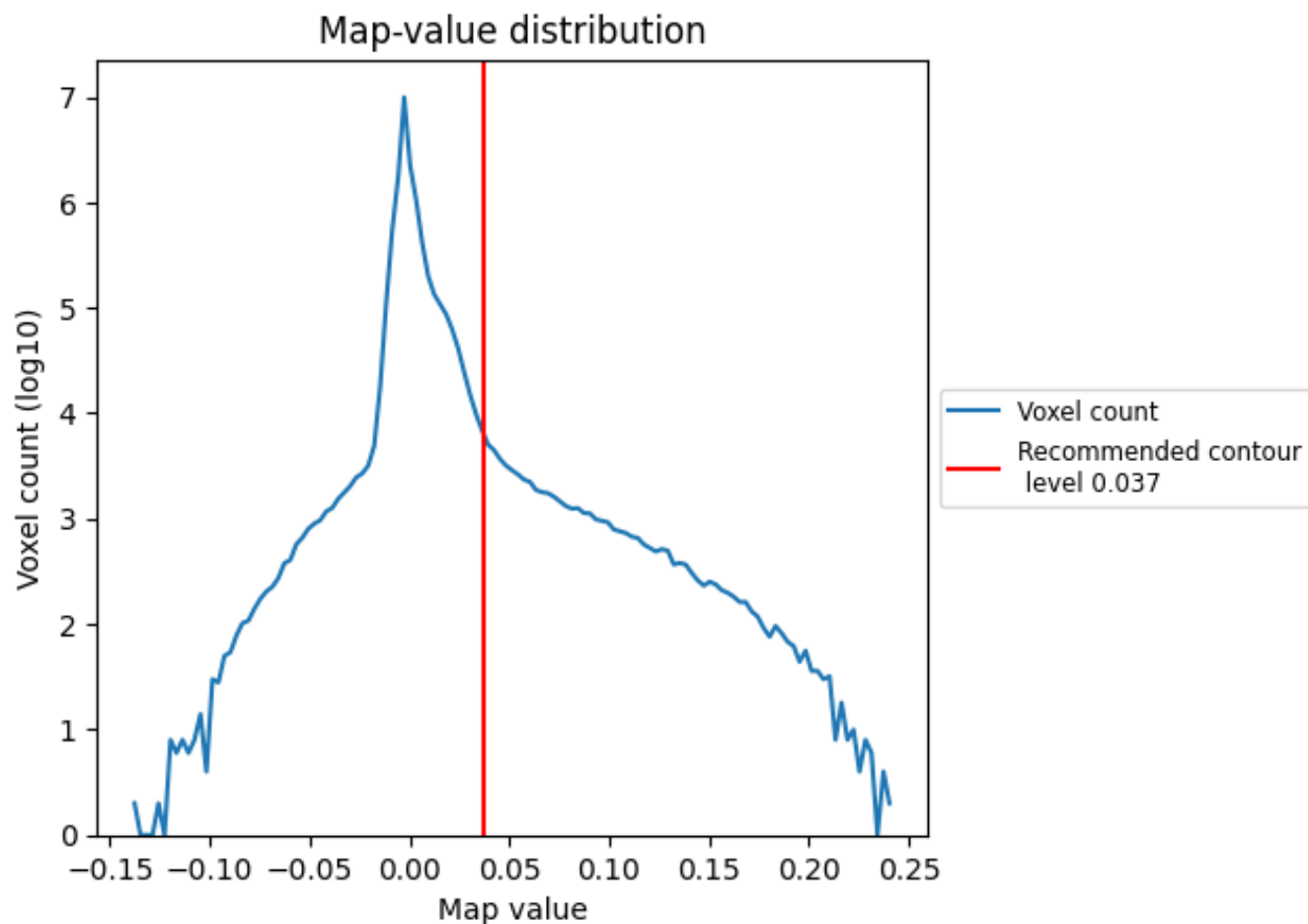
6.6 Mask visualisation [i](#)

This section was not generated. No masks/segmentation were deposited.

7 Map analysis [i](#)

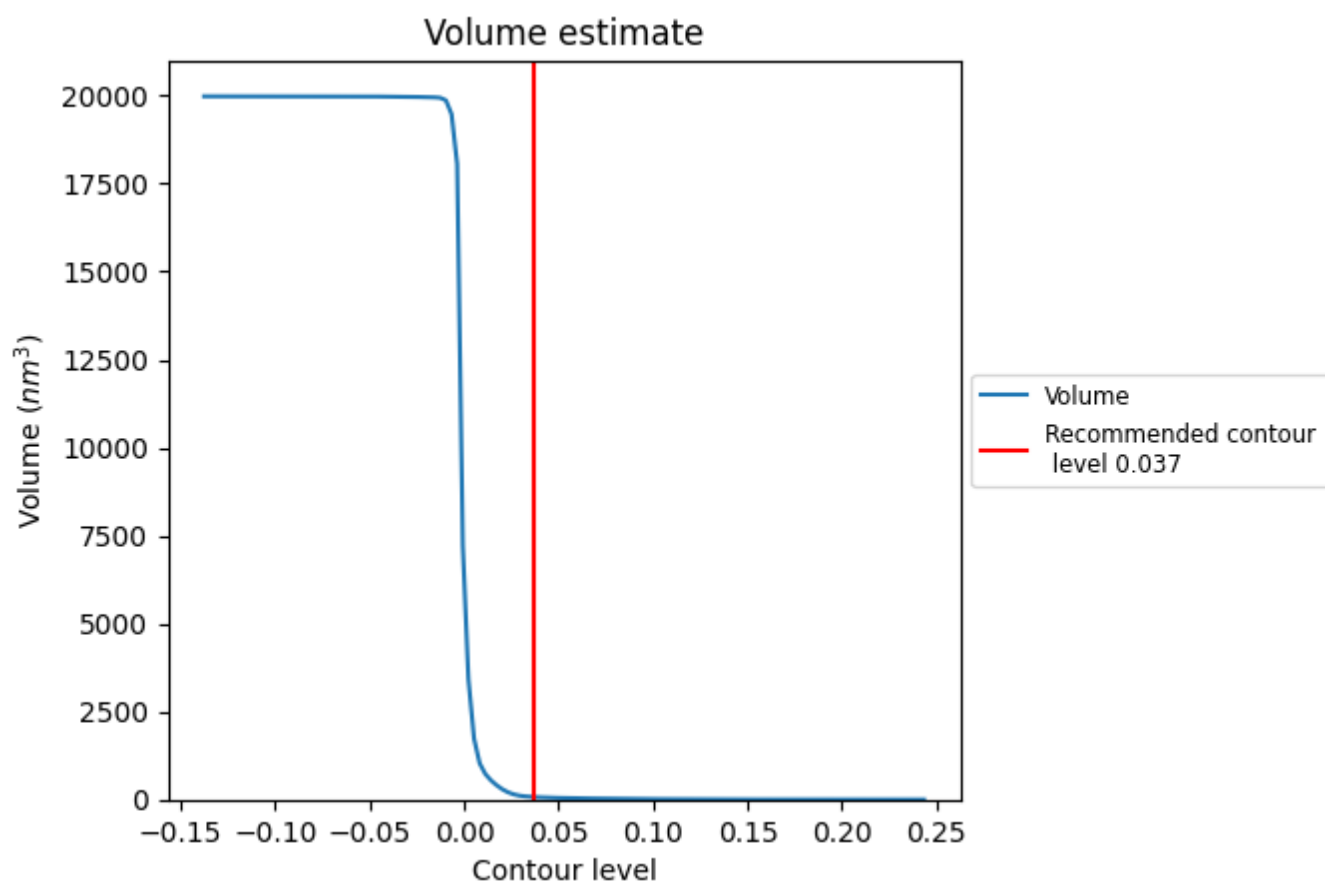
This section contains the results of statistical analysis of the map.

7.1 Map-value distribution [i](#)



The map-value distribution is plotted in 128 intervals along the x-axis. The y-axis is logarithmic. A spike in this graph at zero usually indicates that the volume has been masked.

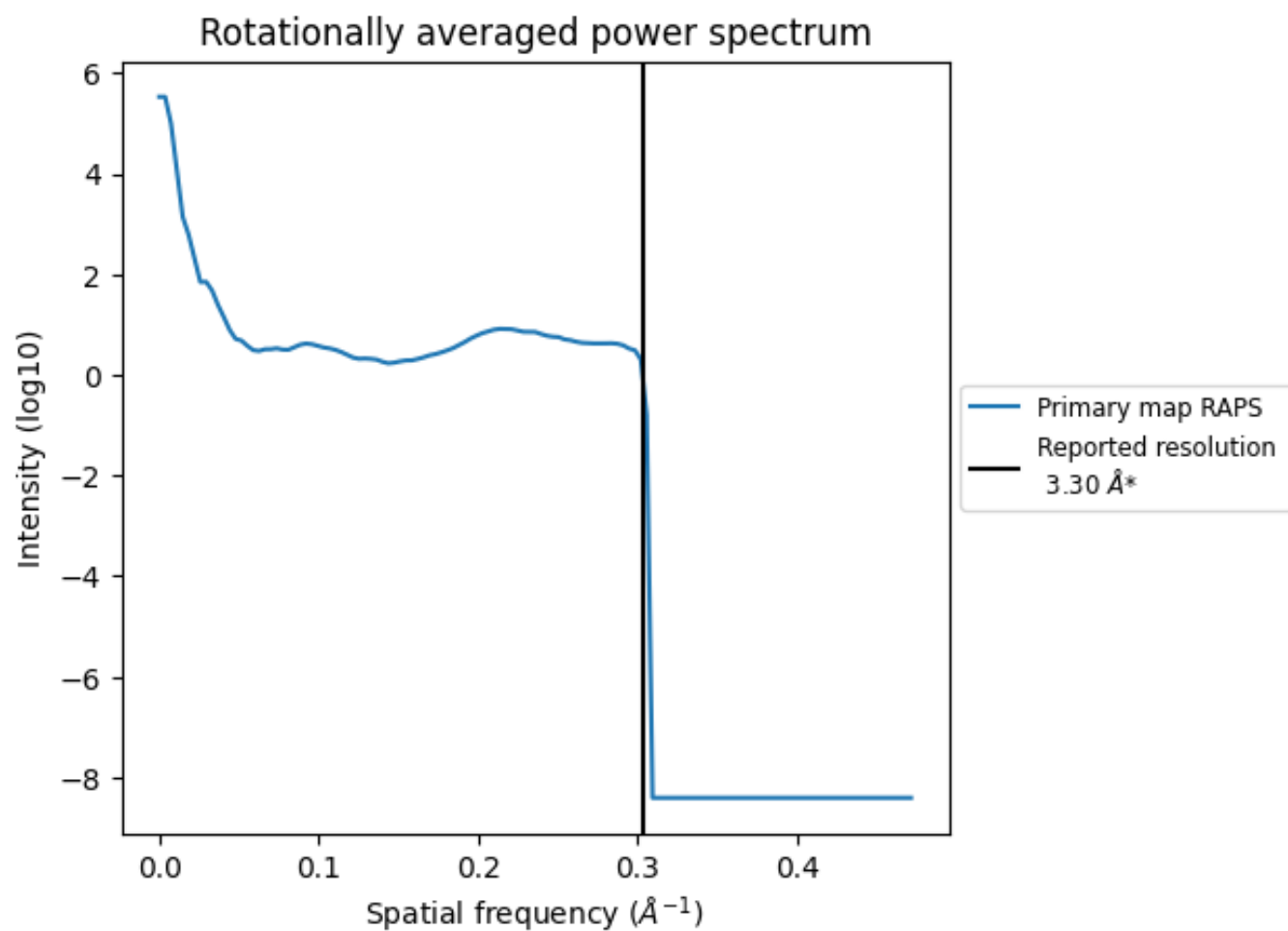
7.2 Volume estimate [i](#)



The volume at the recommended contour level is 71 nm³; this corresponds to an approximate mass of 65 kDa.

The volume estimate graph shows how the enclosed volume varies with the contour level. The recommended contour level is shown as a vertical line and the intersection between the line and the curve gives the volume of the enclosed surface at the given level.

7.3 Rotationally averaged power spectrum ⓘ

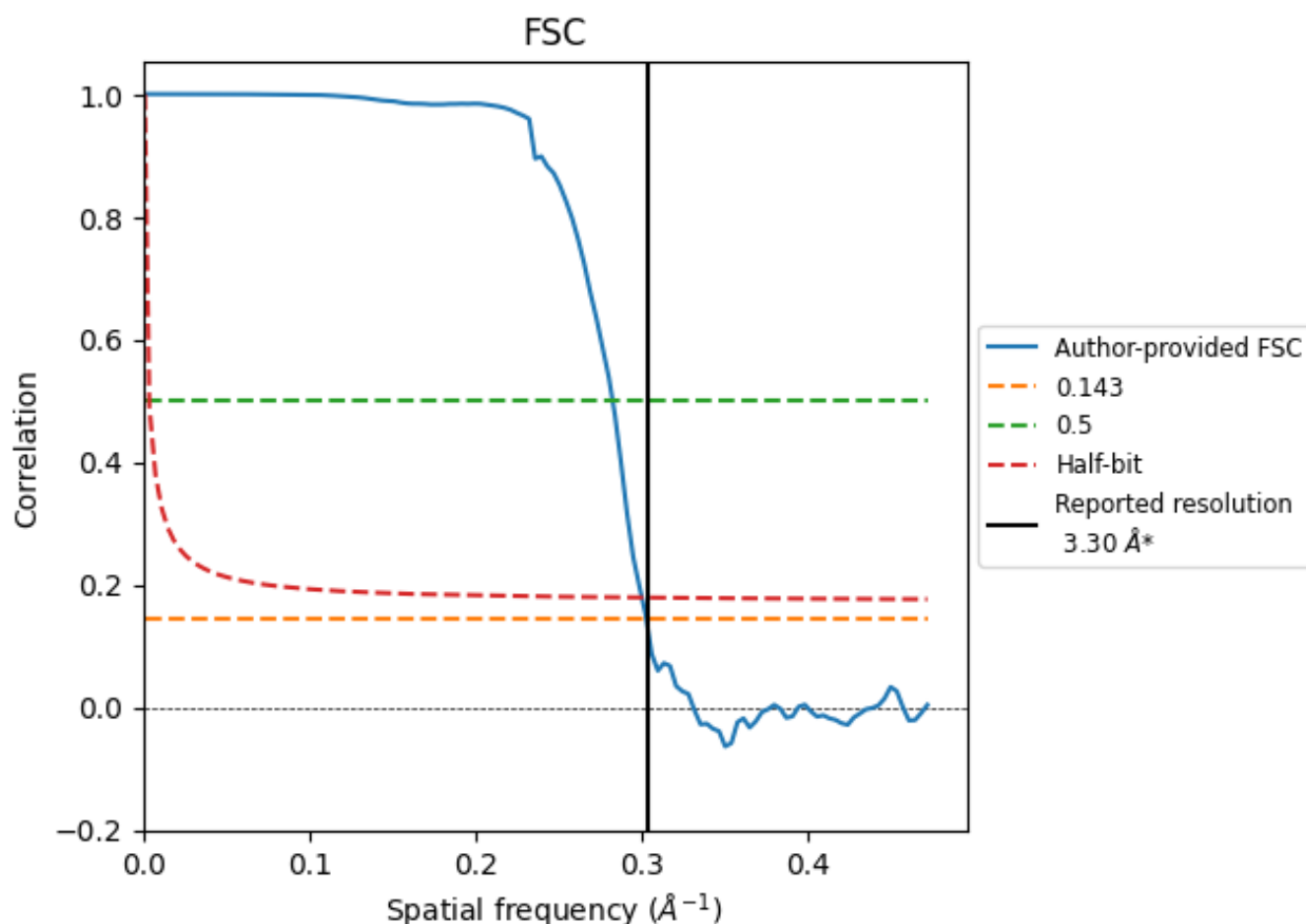


*Reported resolution corresponds to spatial frequency of 0.303 Å⁻¹

8 Fourier-Shell correlation [i](#)

Fourier-Shell Correlation (FSC) is the most commonly used method to estimate the resolution of single-particle and subtomogram-averaged maps. The shape of the curve depends on the imposed symmetry, mask and whether or not the two 3D reconstructions used were processed from a common reference. The reported resolution is shown as a black line. A curve is displayed for the half-bit criterion in addition to lines showing the 0.143 gold standard cut-off and 0.5 cut-off.

8.1 FSC [i](#)



*Reported resolution corresponds to spatial frequency of 0.303 Å⁻¹

8.2 Resolution estimates [i](#)

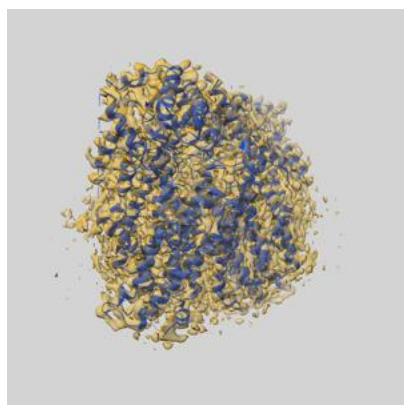
Resolution estimate (Å)	Estimation criterion (FSC cut-off)		
	0.143	0.5	Half-bit
Reported by author	3.30	-	-
Author-provided FSC curve	3.30	3.54	3.33
Unmasked-calculated*	-	-	-

*Resolution estimate based on FSC curve calculated by comparison of deposited half-maps.

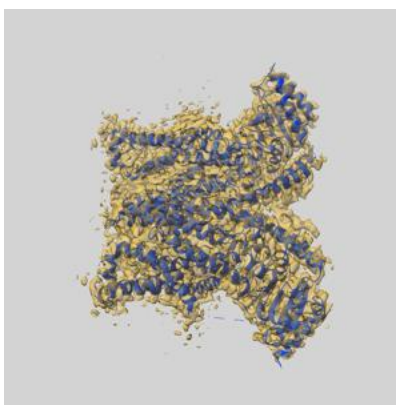
9 Map-model fit [i](#)

This section contains information regarding the fit between EMDB map EMD-24723 and PDB model 7RX3. Per-residue inclusion information can be found in section [3](#) on page [5](#).

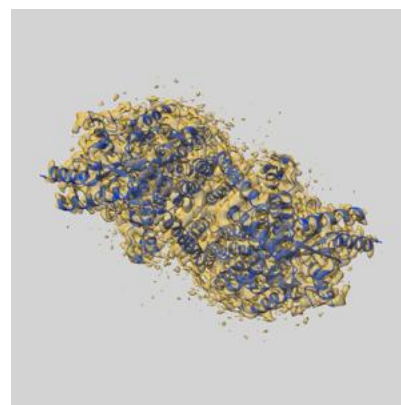
9.1 Map-model overlay [i](#)



X



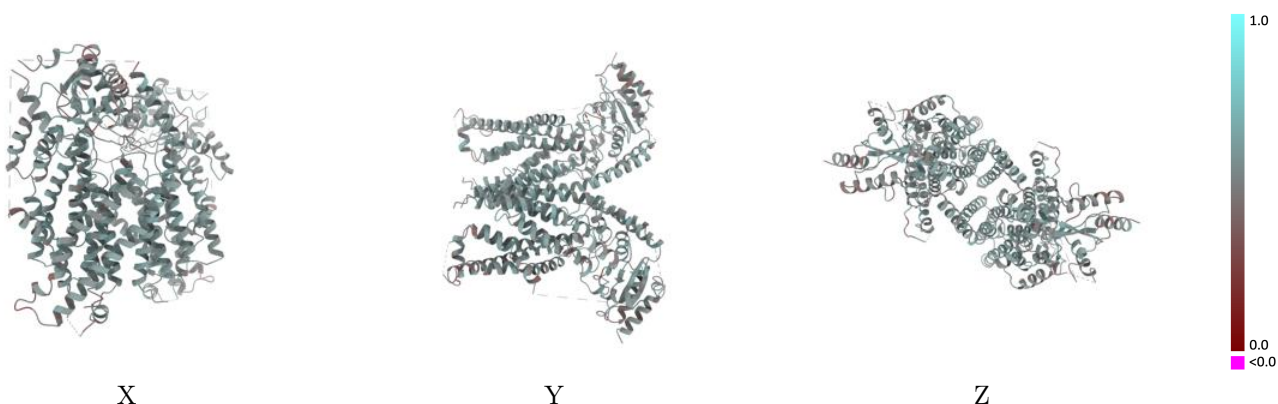
Y



Z

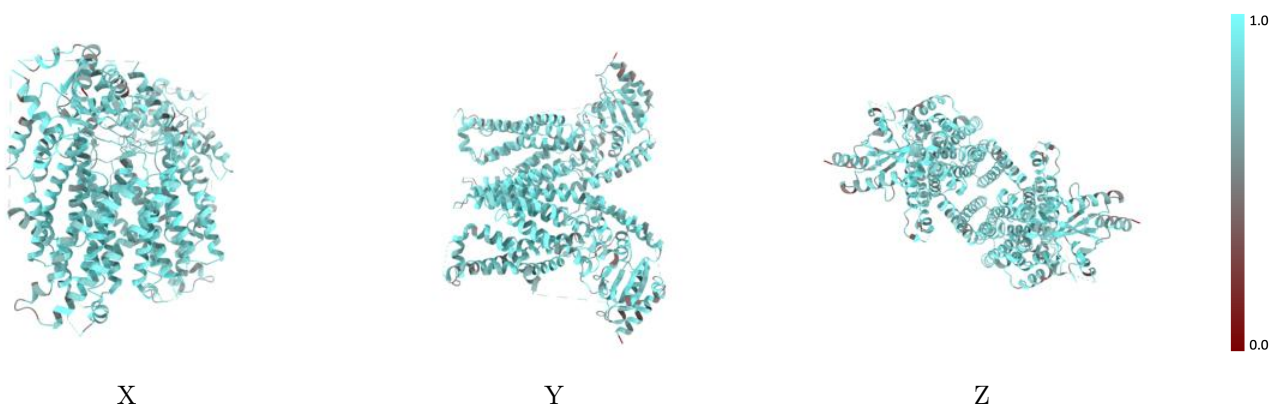
The images above show the 3D surface view of the map at the recommended contour level 0.037 at 50% transparency in yellow overlaid with a ribbon representation of the model coloured in blue. These images allow for the visual assessment of the quality of fit between the atomic model and the map.

9.2 Q-score mapped to coordinate model [i](#)



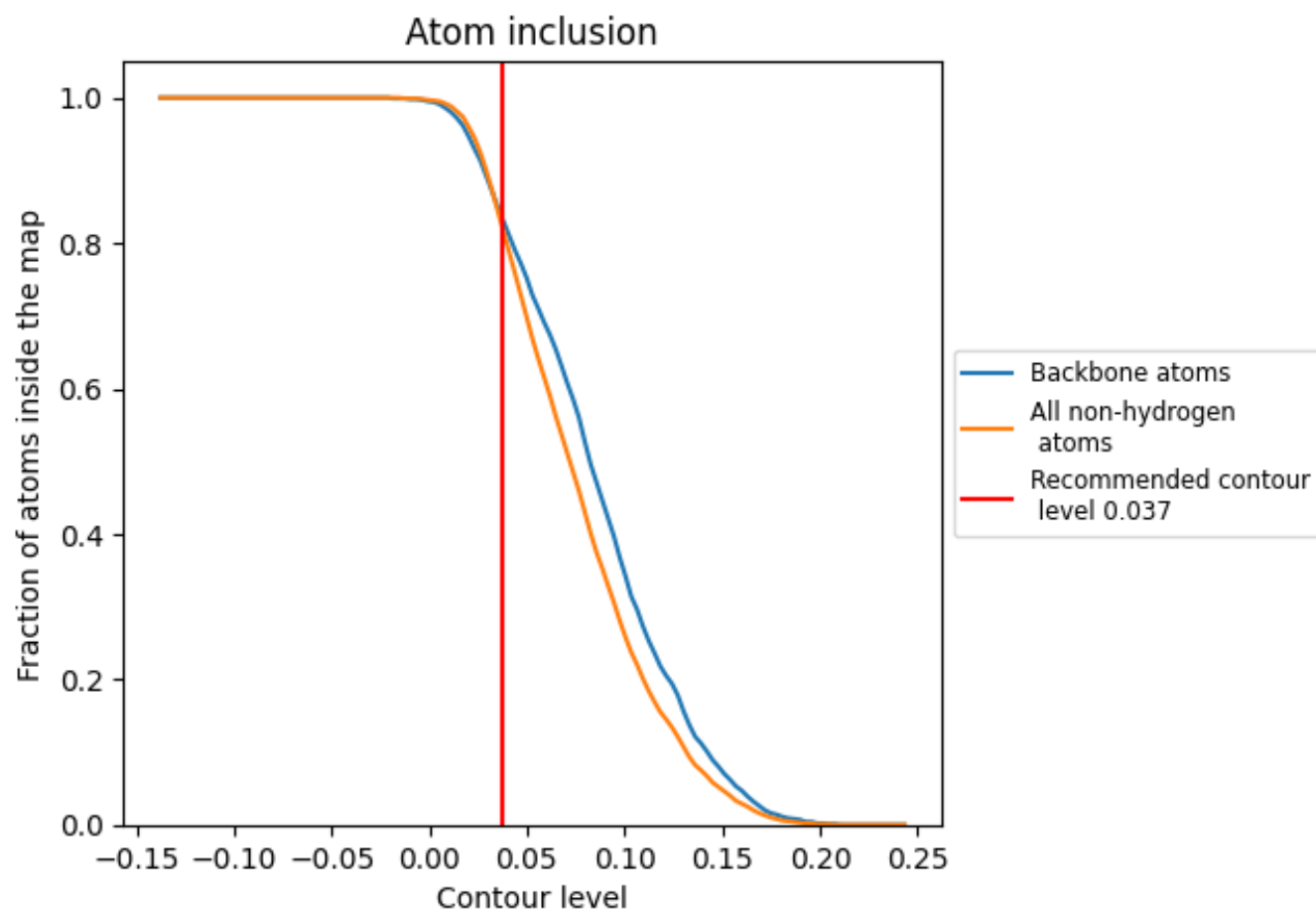
The images above show the model with each residue coloured according to its Q-score. This shows their resolvability in the map with higher Q-score values reflecting better resolvability. Please note: Q-score is calculating the resolvability of atoms, and thus high values are only expected at resolutions at which atoms can be resolved. Low Q-score values may therefore be expected for many entries.

9.3 Atom inclusion mapped to coordinate model [i](#)



The images above show the model with each residue coloured according to its atom inclusion. This shows to what extent they are inside the map at the recommended contour level (0.037).

9.4 Atom inclusion [i](#)



At the recommended contour level, 84% of all backbone atoms, 83% of all non-hydrogen atoms, are inside the map.

9.5 Map-model fit summary ⓘ

The table lists the average atom inclusion at the recommended contour level (0.037) and Q-score for the entire model and for each chain.

Chain	Atom inclusion	Q-score
All	<div><div></div></div> 0.8260	<div><div></div></div> 0.5330
A	<div><div></div></div> 0.8260	<div><div></div></div> 0.5330
B	<div><div></div></div> 0.8260	<div><div></div></div> 0.5330

