



# Full wwPDB X-ray Structure Validation Report ⓘ

Nov 16, 2024 – 11:46 PM EST

PDB ID : 3P3I  
Title : Crystal structure of the F36A mutant of the fluoroacetyl-CoA-specific thioesterase FIK in complex with fluoroacetate and CoA  
Authors : Weeks, A.M.; Coyle, S.M.; Jinek, M.; Doudna, J.A.; Chang, M.C.Y.  
Deposited on : 2010-10-04  
Resolution : 2.00 Å(reported)

This is a Full wwPDB X-ray Structure Validation Report for a publicly released PDB entry.

We welcome your comments at [validation@mail.wwpdb.org](mailto:validation@mail.wwpdb.org)

A user guide is available at

<https://www.wwpdb.org/validation/2017/XrayValidationReportHelp>

with specific help available everywhere you see the ⓘ symbol.

The types of validation reports are described at

<http://www.wwpdb.org/validation/2017/FAQs#types>.

---

The following versions of software and data (see [references ⓘ](#)) were used in the production of this report:

MolProbity	:	4.02b-467
Mogul	:	2022.3.0, CSD as543be (2022)
Xtriage (Phenix)	:	1.20.1
EDS	:	3.0
buster-report	:	1.1.7 (2018)
Percentile statistics	:	20231227.v01 (using entries in the PDB archive December 27th 2023)
CCP4	:	9.0.003 (Gargrove)
Density-Fitness	:	1.0.11
Ideal geometry (proteins)	:	Engh & Huber (2001)
Ideal geometry (DNA, RNA)	:	Parkinson et al. (1996)
Validation Pipeline (wwPDB-VP)	:	2.39

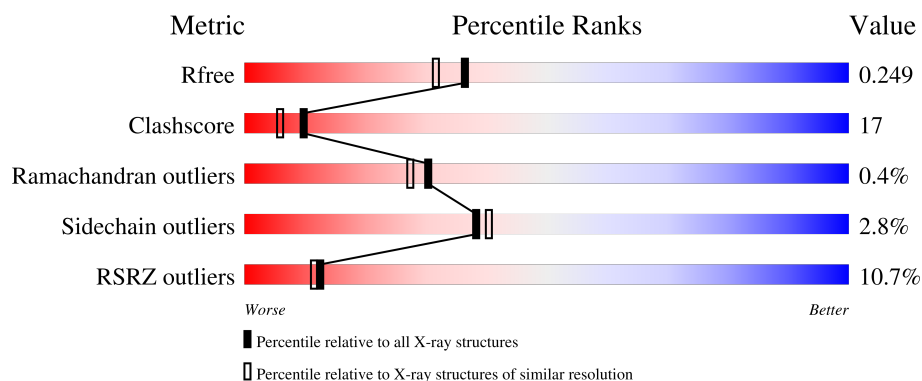
# 1 Overall quality at a glance

The following experimental techniques were used to determine the structure:

*X-RAY DIFFRACTION*

The reported resolution of this entry is 2.00 Å.

Percentile scores (ranging between 0-100) for global validation metrics of the entry are shown in the following graphic. The table shows the number of entries on which the scores are based.




Metric	Whole archive (#Entries)	Similar resolution (#Entries, resolution range(Å))
$R_{free}$	164625	9409 (2.00-2.00)
Clashscore	180529	10737 (2.00-2.00)
Ramachandran outliers	177936	10628 (2.00-2.00)
Sidechain outliers	177891	10627 (2.00-2.00)
RSRZ outliers	164620	9409 (2.00-2.00)

The table below summarises the geometric issues observed across the polymeric chains and their fit to the electron density. The red, orange, yellow and green segments of the lower bar indicate the fraction of residues that contain outliers for  $\geq 3$ , 2, 1 and 0 types of geometric quality criteria respectively. A grey segment represents the fraction of residues that are not modelled. The numeric value for each fraction is indicated below the corresponding segment, with a dot representing fractions  $\leq 5\%$ . The upper red bar (where present) indicates the fraction of residues that have poor fit to the electron density. The numeric value is given above the bar.

Mol	Chain	Length	Quality of chain
1	A	143	
1	B	143	
1	C	143	
1	D	143	
1	E	143	

*Continued on next page...*

*Continued from previous page...*

Mol	Chain	Length	Quality of chain
1	F	143	

The following table lists non-polymeric compounds, carbohydrate monomers and non-standard residues in protein, DNA, RNA chains that are outliers for geometric or electron-density-fit criteria:

Mol	Type	Chain	Res	Chirality	Geometry	Clashes	Electron density
2	FAH	A	140	-	-	X	-
2	FAH	C	140	-	-	X	-

## 2 Entry composition

There are 4 unique types of molecules in this entry. The entry contains 6352 atoms, of which 0 are hydrogens and 0 are deuteriums.

In the tables below, the ZeroOcc column contains the number of atoms modelled with zero occupancy, the AltConf column contains the number of residues with at least one atom in alternate conformation and the Trace column contains the number of residues modelled with at most 2 atoms.

- Molecule 1 is a protein called Fluoroacetyl coenzyme A thioesterase.

Mol	Chain	Residues	Atoms					ZeroOcc	AltConf	Trace
1	A	135	Total	C	N	O	S	0	0	0
			1035	653	187	189	6			
1	B	133	Total	C	N	O	S	0	0	0
			1028	650	185	187	6			
1	C	131	Total	C	N	O	S	0	0	0
			1009	639	180	185	5			
1	D	125	Total	C	N	O	S	0	0	0
			964	610	171	177	6			
1	E	128	Total	C	N	O	S	0	0	0
			989	627	177	180	5			
1	F	133	Total	C	N	O	S	0	0	0
			1028	650	185	187	6			

There are 30 discrepancies between the modelled and reference sequences:

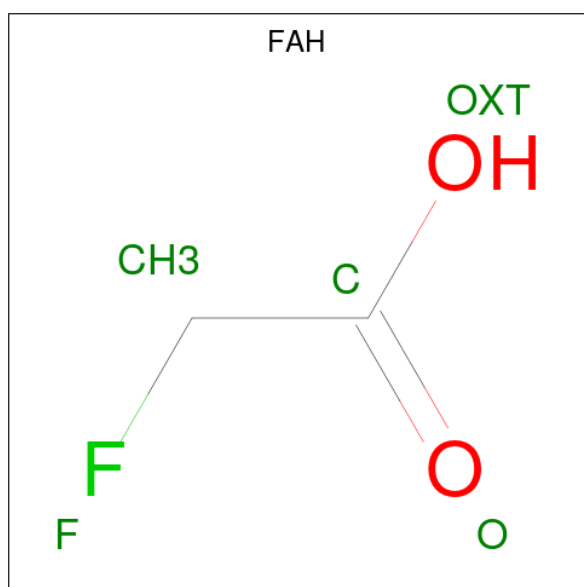
Chain	Residue	Modelled	Actual	Comment	Reference
A	-3	GLY	-	expression tag	UNP Q1EMV2
A	-2	THR	-	expression tag	UNP Q1EMV2
A	-1	GLY	-	expression tag	UNP Q1EMV2
A	0	ALA	-	expression tag	UNP Q1EMV2
A	36	ALA	PHE	engineered mutation	UNP Q1EMV2
B	-3	GLY	-	expression tag	UNP Q1EMV2
B	-2	THR	-	expression tag	UNP Q1EMV2
B	-1	GLY	-	expression tag	UNP Q1EMV2
B	0	ALA	-	expression tag	UNP Q1EMV2
B	36	ALA	PHE	engineered mutation	UNP Q1EMV2
C	-3	GLY	-	expression tag	UNP Q1EMV2
C	-2	THR	-	expression tag	UNP Q1EMV2
C	-1	GLY	-	expression tag	UNP Q1EMV2
C	0	ALA	-	expression tag	UNP Q1EMV2
C	36	ALA	PHE	engineered mutation	UNP Q1EMV2
D	-3	GLY	-	expression tag	UNP Q1EMV2
D	-2	THR	-	expression tag	UNP Q1EMV2

*Continued on next page...*

Continued from previous page...

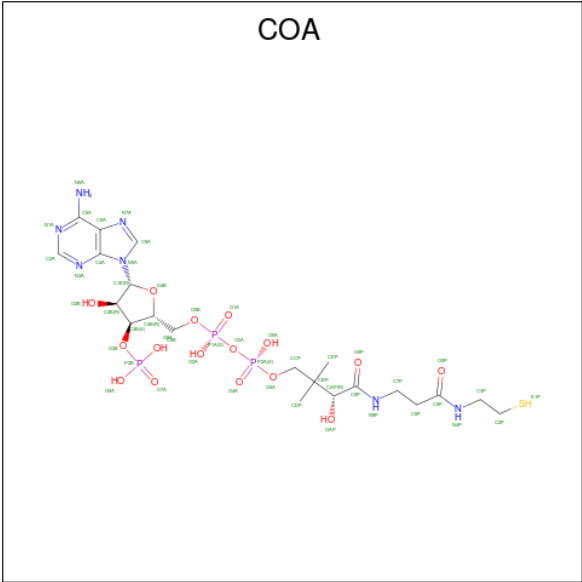
Chain	Residue	Modelled	Actual	Comment	Reference
D	-1	GLY	-	expression tag	UNP Q1EMV2
D	0	ALA	-	expression tag	UNP Q1EMV2
D	36	ALA	PHE	engineered mutation	UNP Q1EMV2
E	-3	GLY	-	expression tag	UNP Q1EMV2
E	-2	THR	-	expression tag	UNP Q1EMV2
E	-1	GLY	-	expression tag	UNP Q1EMV2
E	0	ALA	-	expression tag	UNP Q1EMV2
E	36	ALA	PHE	engineered mutation	UNP Q1EMV2
F	-3	GLY	-	expression tag	UNP Q1EMV2
F	-2	THR	-	expression tag	UNP Q1EMV2
F	-1	GLY	-	expression tag	UNP Q1EMV2
F	0	ALA	-	expression tag	UNP Q1EMV2
F	36	ALA	PHE	engineered mutation	UNP Q1EMV2

- Molecule 2 is fluoroacetic acid (three-letter code: FAH) (formula:  $C_2H_3FO_2$ ).



Mol	Chain	Residues	Atoms				ZeroOcc	AltConf
2	A	1	Total	C	F	O	0	0
			5	2	1	2		
2	C	1	Total	C	F	O	0	0
			5	2	1	2		

- Molecule 3 is COENZYME A (three-letter code: COA) (formula:  $C_{21}H_{36}N_7O_{16}P_3S$ ).



Mol	Chain	Residues	Atoms					ZeroOcc	AltConf
3	B	1	Total	C	N	O	S	0	0
			9	5	2	1	1		
3	D	1	Total	C	N	O	S	0	0
			9	5	2	1	1		

- Molecule 4 is water.

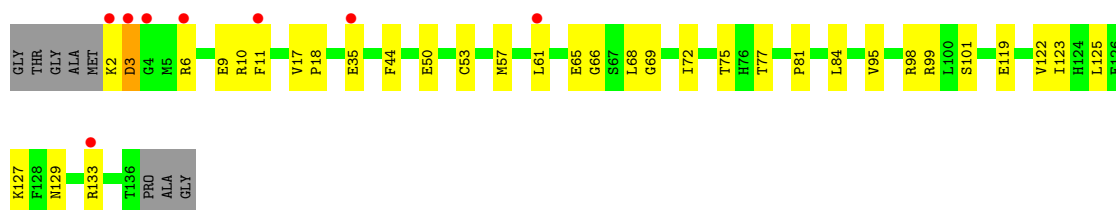
Mol	Chain	Residues	Atoms		ZeroOcc	AltConf
4	A	60	Total	O	0	0
			60	60		
4	B	44	Total	O	0	0
			44	44		
4	C	52	Total	O	0	0
			52	52		
4	D	48	Total	O	0	0
			48	48		
4	E	33	Total	O	0	0
			33	33		
4	F	34	Total	O	0	0
			34	34		

### 3 Residue-property plots [i](#)


These plots are drawn for all protein, RNA, DNA and oligosaccharide chains in the entry. The first graphic for a chain summarises the proportions of the various outlier classes displayed in the second graphic. The second graphic shows the sequence view annotated by issues in geometry and electron density. Residues are color-coded according to the number of geometric quality criteria for which they contain at least one outlier: green = 0, yellow = 1, orange = 2 and red = 3 or more. A red dot above a residue indicates a poor fit to the electron density ( $RSRZ > 2$ ). Stretches of 2 or more consecutive residues without any outlier are shown as a green connector. Residues present in the sample, but not in the model, are shown in grey.

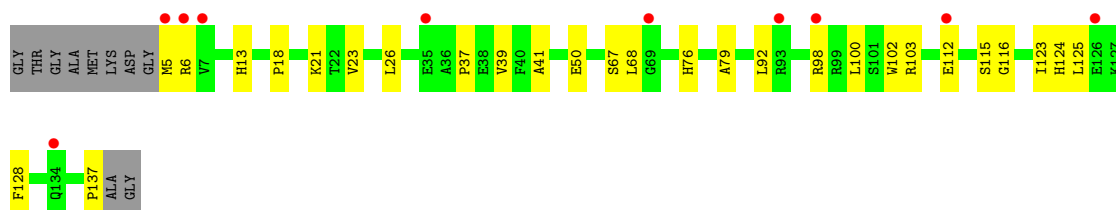
- Molecule 1: Fluoroacetyl coenzyme A thioesterase

Chain A: 



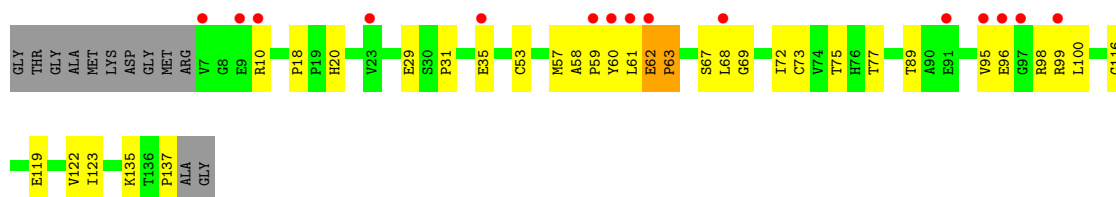
- Molecule 1: Fluoroacetyl coenzyme A thioesterase

Chain B: 




- Molecule 1: Fluoroacetyl coenzyme A thioesterase

Chain C: 

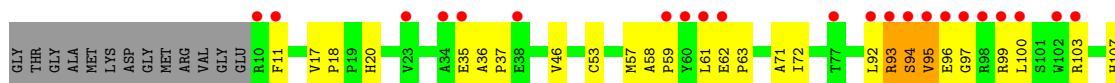


- Molecule 1: Fluoroacetyl coenzyme A thioesterase

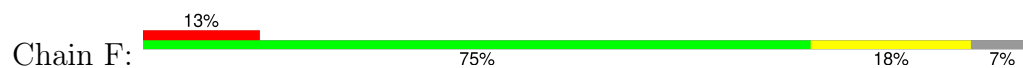
Chain D: 



- Molecule 1: Fluoroacetyl coenzyme A thioesterase



- Molecule 1: Fluoroacetyl coenzyme A thioesterase





## 4 Data and refinement statistics

Property	Value	Source
Space group	C 1 2 1	Depositor
Cell constants a, b, c, $\alpha$ , $\beta$ , $\gamma$	141.56Å 89.01Å 71.20Å 90.00° 118.10° 90.00°	Depositor
Resolution (Å)	72.48 – 2.00 72.48 – 2.00	Depositor EDS
% Data completeness (in resolution range)	91.2 (72.48-2.00) 91.2 (72.48-2.00)	Depositor EDS
$R_{merge}$	(Not available)	Depositor
$R_{sym}$	(Not available)	Depositor
$\langle I/\sigma(I) \rangle$ <sup>1</sup>	2.35 (at 2.00Å)	Xtriage
Refinement program	PHENIX (phenix.refine)	Depositor
R, $R_{free}$	0.218 , 0.252 0.218 , 0.249	Depositor DCC
$R_{free}$ test set	2011 reflections (4.03%)	wwPDB-VP
Wilson B-factor (Å <sup>2</sup> )	19.4	Xtriage
Anisotropy	0.250	Xtriage
Bulk solvent $k_{sol}$ (e/Å <sup>3</sup> ), $B_{sol}$ (Å <sup>2</sup> )	0.37 , 46.8	EDS
L-test for twinning <sup>2</sup>	$\langle  L  \rangle = 0.49$ , $\langle L^2 \rangle = 0.32$	Xtriage
Estimated twinning fraction	0.028 for -h-2*1,-k,l	Xtriage
$F_o, F_c$ correlation	0.93	EDS
Total number of atoms	6352	wwPDB-VP
Average B, all atoms (Å <sup>2</sup> )	32.0	wwPDB-VP

Xtriage's analysis on translational NCS is as follows: *The analyses of the Patterson function reveals a significant off-origin peak that is 46.72 % of the origin peak, indicating pseudo-translational symmetry. The chance of finding a peak of this or larger height randomly in a structure without pseudo-translational symmetry is equal to 1.1001e-04. The detected translational NCS is most likely also responsible for the elevated intensity ratio.*

<sup>1</sup>Intensities estimated from amplitudes.

<sup>2</sup>Theoretical values of  $\langle |L| \rangle$ ,  $\langle L^2 \rangle$  for acentric reflections are 0.5, 0.333 respectively for untwinned datasets, and 0.375, 0.2 for perfectly twinned datasets.

## 5 Model quality [i](#)

### 5.1 Standard geometry [i](#)

Bond lengths and bond angles in the following residue types are not validated in this section: FAH, COA

The Z score for a bond length (or angle) is the number of standard deviations the observed value is removed from the expected value. A bond length (or angle) with  $|Z| > 5$  is considered an outlier worth inspection. RMSZ is the root-mean-square of all Z scores of the bond lengths (or angles).

Mol	Chain	Bond lengths		Bond angles	
		RMSZ	$\# Z  > 5$	RMSZ	$\# Z  > 5$
1	A	0.36	0/1062	0.56	0/1444
1	B	0.32	0/1056	0.55	0/1437
1	C	0.37	0/1037	0.56	0/1413
1	D	0.32	0/991	0.53	0/1350
1	E	0.41	1/1017 (0.1%)	0.51	0/1386
1	F	0.31	0/1056	0.51	0/1437
All	All	0.35	1/6219 (0.0%)	0.54	0/8467

All (1) bond length outliers are listed below:

Mol	Chain	Res	Type	Atoms	Z	Observed(Å)	Ideal(Å)
1	E	126	GLU	CB-CG	-6.16	1.40	1.52

There are no bond angle outliers.

There are no chirality outliers.

There are no planarity outliers.

### 5.2 Too-close contacts [i](#)

In the following table, the Non-H and H(model) columns list the number of non-hydrogen atoms and hydrogen atoms in the chain respectively. The H(added) column lists the number of hydrogen atoms added and optimized by MolProbity. The Clashes column lists the number of clashes within the asymmetric unit, whereas Symm-Clashes lists symmetry-related clashes.

Mol	Chain	Non-H	H(model)	H(added)	Clashes	Symm-Clashes
1	A	1035	0	1009	48	0
1	B	1028	0	1009	29	0
1	C	1009	0	987	46	0
1	D	964	0	934	34	0

*Continued on next page...*

*Continued from previous page...*

Mol	Chain	Non-H	H(model)	H(added)	Clashes	Symm-Clashes
1	E	989	0	969	40	3
1	F	1028	0	1009	29	3
2	A	5	0	2	4	0
2	C	5	0	2	5	0
3	B	9	0	10	2	0
3	D	9	0	10	2	0
4	A	60	0	0	3	0
4	B	44	0	0	3	0
4	C	52	0	0	2	0
4	D	48	0	0	0	0
4	E	33	0	0	4	0
4	F	34	0	0	2	0
All	All	6352	0	5941	208	3

The all-atom clashscore is defined as the number of clashes found per 1000 atoms (including hydrogen atoms). The all-atom clashscore for this structure is 17.

All (208) close contacts within the same asymmetric unit are listed below, sorted by their clash magnitude.

Atom-1	Atom-2	Interatomic distance (Å)	Clash overlap (Å)
1:D:68:LEU:HD11	1:D:123:ILE:CD1	1.44	1.47
1:D:68:LEU:CD1	1:D:123:ILE:HD13	1.72	1.18
1:D:68:LEU:CD1	1:D:123:ILE:CD1	2.20	1.18
1:F:68:LEU:HD11	1:F:123:ILE:CD1	1.76	1.15
1:B:68:LEU:CD1	1:B:123:ILE:HD13	1.77	1.14
1:F:68:LEU:CD1	1:F:123:ILE:HD13	1.77	1.13
1:C:60:TYR:O	1:C:61:LEU:HD12	1.47	1.12
1:D:68:LEU:HD11	1:D:123:ILE:HD13	1.22	1.11
1:D:68:LEU:HD11	1:D:123:ILE:HD11	1.22	1.10
1:F:67:SER:C	1:F:68:LEU:HD12	1.74	1.06
1:C:95:VAL:HG22	1:C:100:LEU:HG	1.07	1.05
1:C:60:TYR:C	1:C:61:LEU:HD12	1.75	1.05
1:B:68:LEU:HD11	1:B:123:ILE:CD1	1.86	1.04
1:C:137:PRO:HD3	1:D:84:LEU:HD11	1.38	1.04
1:B:68:LEU:HD11	1:B:123:ILE:HD13	1.04	1.00
1:C:137:PRO:HD3	1:D:84:LEU:CD1	1.91	1.00
1:D:67:SER:C	1:D:68:LEU:HD12	1.80	1.00
1:C:57:MET:O	1:C:61:LEU:HD13	1.60	1.00
1:C:95:VAL:CG2	1:C:100:LEU:HG	1.94	0.98
1:F:68:LEU:CD1	1:F:123:ILE:CD1	2.40	0.96
1:A:57:MET:O	1:A:61:LEU:HD13	1.66	0.95

*Continued on next page...*

*Continued from previous page...*

Atom-1	Atom-2	Interatomic distance (Å)	Clash overlap (Å)
1:E:99:ARG:O	1:E:100:LEU:HD12	1.65	0.95
1:E:93:ARG:HH11	1:E:103:ARG:NE	1.65	0.94
1:F:68:LEU:HD11	1:F:123:ILE:HD11	1.47	0.93
1:C:69:GLY:H	2:C:140:FAH:HH3A	1.31	0.93
1:C:95:VAL:HG22	1:C:100:LEU:CG	1.98	0.93
1:D:26:LEU:CD1	1:D:27:TYR:CD2	2.52	0.93
2:C:140:FAH:F	4:C:271:HOH:O	1.78	0.92
1:E:93:ARG:HH11	1:E:103:ARG:HE	0.94	0.92
1:E:99:ARG:C	1:E:100:LEU:HD12	1.91	0.91
1:E:93:ARG:NH1	1:E:103:ARG:HE	1.70	0.90
1:F:68:LEU:HD11	1:F:123:ILE:HD13	1.42	0.89
1:F:68:LEU:HD13	1:F:123:ILE:HD13	1.50	0.89
1:F:98:ARG:HH11	1:F:98:ARG:HG3	1.38	0.89
1:A:101:SER:OG	4:A:154:HOH:O	1.94	0.85
3:B:140:COA:N8P	4:B:257:HOH:O	2.10	0.85
1:C:67:SER:C	1:C:68:LEU:HD22	1.98	0.83
1:E:95:VAL:HB	1:E:100:LEU:HG	1.60	0.83
1:D:26:LEU:HD12	1:D:27:TYR:HD2	1.45	0.80
1:D:26:LEU:HD12	1:D:27:TYR:CD2	2.17	0.80
1:A:68:LEU:HD23	1:A:123:ILE:HD13	1.63	0.79
1:E:57:MET:O	1:E:61:LEU:HD13	1.84	0.78
1:C:68:LEU:CD2	1:C:123:ILE:CD1	2.62	0.77
1:C:68:LEU:HD21	1:C:123:ILE:HD11	1.67	0.77
1:B:112:GLU:OE2	4:B:221:HOH:O	2.01	0.77
1:E:135:LYS:O	1:F:84:LEU:HD21	1.87	0.75
1:D:68:LEU:HD13	1:D:123:ILE:HD13	1.68	0.75
1:A:53:CYS:O	1:A:57:MET:HG2	1.86	0.74
1:D:26:LEU:HD13	1:D:27:TYR:CD2	2.21	0.74
1:A:68:LEU:CD2	1:A:123:ILE:HD13	2.18	0.74
1:C:68:LEU:HD21	1:C:123:ILE:CD1	2.17	0.74
1:E:94:SER:HB2	4:E:173:HOH:O	1.85	0.74
1:A:99:ARG:HE	1:C:99:ARG:NH1	1.86	0.73
1:A:57:MET:O	1:A:61:LEU:CD1	2.36	0.73
1:A:68:LEU:CD2	1:A:123:ILE:CD1	2.66	0.73
1:F:67:SER:O	1:F:68:LEU:HD12	1.89	0.73
1:C:60:TYR:C	1:C:61:LEU:CD1	2.56	0.72
1:A:99:ARG:HH21	1:C:99:ARG:HD2	1.54	0.72
1:B:50:GLU:OE1	4:B:160:HOH:O	2.08	0.71
1:F:38:GLU:OE1	4:F:211:HOH:O	2.09	0.70
1:C:67:SER:O	1:C:68:LEU:HD22	1.92	0.69
1:D:26:LEU:CD1	1:D:27:TYR:CE2	2.75	0.69

*Continued on next page...*

*Continued from previous page...*

Atom-1	Atom-2	Interatomic distance (Å)	Clash overlap (Å)
1:C:57:MET:O	1:C:61:LEU:CD1	2.39	0.69
1:B:68:LEU:CD1	1:B:123:ILE:CD1	2.56	0.69
1:E:93:ARG:O	1:E:94:SER:HB3	1.93	0.68
1:C:119:GLU:OE2	4:C:141:HOH:O	2.12	0.68
1:C:58:ALA:HB3	1:C:59:PRO:HD3	1.75	0.68
1:C:68:LEU:CD2	1:C:123:ILE:HD13	2.23	0.68
1:A:44:PHE:CE1	1:B:26:LEU:HD12	2.29	0.67
1:A:66:GLY:HA3	1:A:125:LEU:HD21	1.78	0.66
1:C:69:GLY:N	2:C:140:FAH:HH3A	2.09	0.66
1:C:68:LEU:HD23	1:C:123:ILE:HD13	1.78	0.66
1:F:50:GLU:OE1	4:F:264:HOH:O	2.13	0.66
1:C:68:LEU:HD23	1:C:123:ILE:CD1	2.25	0.65
1:E:58:ALA:HB3	1:E:59:PRO:HD3	1.77	0.65
1:E:137:PRO:HD3	1:F:84:LEU:CD2	2.27	0.65
1:D:68:LEU:HD12	1:D:68:LEU:N	2.12	0.65
1:D:68:LEU:CD1	1:D:123:ILE:CG1	2.74	0.65
1:E:57:MET:O	1:E:61:LEU:CD1	2.46	0.63
1:C:60:TYR:O	1:C:60:TYR:CD2	2.52	0.63
1:D:68:LEU:HD13	1:D:123:ILE:CD1	2.24	0.63
1:F:68:LEU:HD12	1:F:68:LEU:N	2.12	0.63
1:F:98:ARG:HG3	1:F:98:ARG:NH1	2.08	0.63
1:E:99:ARG:O	1:E:100:LEU:CD1	2.43	0.63
1:A:11:PHE:CE1	4:A:167:HOH:O	2.51	0.62
1:F:95:VAL:O	1:F:96:GLU:HG3	1.98	0.62
1:D:67:SER:O	1:D:68:LEU:HD12	2.00	0.62
1:D:5:MET:HE1	1:D:102:TRP:HH2	1.65	0.62
1:C:137:PRO:CD	1:D:84:LEU:CD1	2.73	0.62
1:E:119:GLU:OE2	4:E:144:HOH:O	2.16	0.61
1:E:137:PRO:HD3	1:F:84:LEU:HD22	1.83	0.61
1:A:68:LEU:HD23	1:A:123:ILE:CD1	2.27	0.61
1:A:99:ARG:HH11	1:A:119:GLU:HG2	1.65	0.61
1:A:66:GLY:N	1:A:125:LEU:CD2	2.63	0.61
1:A:129:ASN:HD21	1:A:133:ARG:HD3	1.65	0.61
1:E:11:PHE:CD1	4:E:219:HOH:O	2.51	0.60
1:A:99:ARG:NH1	1:A:119:GLU:HG2	2.17	0.60
1:E:35:GLU:OE2	1:E:35:GLU:HA	2.01	0.59
1:A:69:GLY:H	2:A:140:FAH:HH3A	1.68	0.59
1:E:97:GLY:C	1:E:99:ARG:H	2.06	0.58
1:A:68:LEU:HD21	1:B:37:PRO:HG2	1.84	0.58
1:B:5:MET:HE1	1:B:102:TRP:HH2	1.67	0.58
1:A:66:GLY:CA	1:A:125:LEU:HD21	2.33	0.58

*Continued on next page...*

*Continued from previous page...*

Atom-1	Atom-2	Interatomic distance (Å)	Clash overlap (Å)
1:C:96:GLU:O	1:C:99:ARG:HG2	2.03	0.58
1:C:96:GLU:CD	1:C:99:ARG:HH21	2.07	0.58
1:C:96:GLU:O	1:C:96:GLU:HG2	2.03	0.57
1:A:84:LEU:CD1	1:B:137:PRO:HD3	2.35	0.57
1:A:68:LEU:CD2	1:A:123:ILE:HD11	2.35	0.57
1:D:77:THR:O	3:D:140:COA:H72	2.05	0.57
1:E:53:CYS:O	1:E:57:MET:HG2	2.05	0.56
1:C:137:PRO:CD	1:D:84:LEU:HD12	2.37	0.55
1:C:53:CYS:O	1:C:57:MET:HG2	2.06	0.55
1:A:99:ARG:NH2	1:C:99:ARG:HD2	2.20	0.55
1:A:129:ASN:ND2	1:A:133:ARG:HH11	2.04	0.55
1:D:68:LEU:CD1	1:D:123:ILE:HG12	2.36	0.55
1:C:68:LEU:CD2	1:C:123:ILE:HD11	2.34	0.54
1:B:68:LEU:HD21	1:B:128:PHE:CZ	2.42	0.54
1:E:93:ARG:NH1	1:E:103:ARG:NE	2.40	0.54
1:A:129:ASN:ND2	1:A:133:ARG:NH1	2.56	0.54
1:F:71:ALA:HB3	1:F:119:GLU:HB3	1.89	0.54
1:D:68:LEU:HD13	1:D:123:ILE:CG1	2.38	0.53
1:E:96:GLU:HB3	1:E:99:ARG:NH2	2.23	0.53
1:A:2:LYS:O	1:A:3:ASP:O	2.26	0.53
1:A:69:GLY:H	2:A:140:FAH:CH3	2.22	0.53
1:E:107:HIS:HD2	1:E:109:GLY:H	1.55	0.53
1:C:10:ARG:HH21	1:C:89:THR:HG21	1.74	0.52
1:D:68:LEU:CD1	1:D:68:LEU:N	2.72	0.52
1:A:6:ARG:HG3	1:A:9:GLU:HB2	1.91	0.52
1:E:93:ARG:HD3	1:E:103:ARG:HG3	1.90	0.52
1:C:29:GLU:O	1:C:31:PRO:HD3	2.10	0.52
1:F:5:MET:HG2	1:F:92:LEU:CD2	2.40	0.52
1:D:5:MET:CE	1:D:102:TRP:HH2	2.23	0.52
1:B:18:PRO:HG2	1:B:21:LYS:HG2	1.92	0.51
1:B:67:SER:C	1:B:68:LEU:HD12	2.31	0.51
1:A:66:GLY:N	1:A:125:LEU:HD21	2.24	0.51
1:A:129:ASN:HD22	1:A:133:ARG:NH1	2.07	0.51
1:E:92:LEU:HD21	1:E:95:VAL:CG1	2.40	0.51
1:A:57:MET:HB2	1:A:61:LEU:HD11	1.93	0.51
1:F:68:LEU:HD13	1:F:123:ILE:CD1	2.27	0.51
1:A:10:ARG:HD2	4:A:229:HOH:O	2.10	0.51
1:A:44:PHE:HE1	1:B:26:LEU:HD12	1.74	0.50
1:A:84:LEU:HD11	1:B:137:PRO:HD3	1.93	0.50
1:D:91:GLU:OE1	1:D:93:ARG:NH1	2.44	0.50
1:F:68:LEU:CD1	1:F:68:LEU:N	2.74	0.50

*Continued on next page...*

*Continued from previous page...*

Atom-1	Atom-2	Interatomic distance (Å)	Clash overlap (Å)
1:F:5:MET:HG2	1:F:92:LEU:HD22	1.93	0.50
1:C:60:TYR:O	1:C:60:TYR:CG	2.65	0.50
1:A:6:ARG:HG2	1:A:9:GLU:OE1	2.12	0.48
1:A:68:LEU:HD21	1:A:123:ILE:CD1	2.42	0.48
1:A:98:ARG:HD3	1:A:122:VAL:O	2.13	0.48
1:B:5:MET:CE	1:B:102:TRP:HH2	2.27	0.48
1:F:81:PRO:HD2	1:F:84:LEU:HD23	1.96	0.48
1:E:58:ALA:O	1:E:61:LEU:HB2	2.14	0.47
1:E:71:ALA:HB3	1:E:119:GLU:HB2	1.96	0.47
1:B:5:MET:HG2	1:B:92:LEU:HD22	1.94	0.47
1:A:65:GLU:C	1:A:125:LEU:CD2	2.82	0.47
1:F:53:CYS:O	1:F:57:MET:HG3	2.14	0.47
1:A:44:PHE:CE1	1:B:26:LEU:CD1	2.97	0.46
1:B:100:LEU:HD12	1:B:100:LEU:N	2.31	0.46
1:A:127:LYS:HE2	1:A:127:LYS:HB3	1.78	0.46
1:E:62:GLU:HG2	1:E:63:PRO:HD2	1.97	0.46
1:C:18:PRO:HB2	1:C:20:HIS:CD2	2.51	0.45
1:B:103:ARG:NH2	1:B:115:SER:HB2	2.31	0.45
1:C:68:LEU:HD13	2:C:140:FAH:HH3	1.98	0.45
1:C:62:GLU:O	1:C:63:PRO:C	2.54	0.45
1:B:76:HIS:O	3:B:140:COA:H21	2.16	0.45
1:C:137:PRO:CG	1:D:84:LEU:HD12	2.47	0.44
1:A:50:GLU:OE2	2:A:140:FAH:HH3A	2.18	0.44
1:F:23:VAL:HA	1:F:41:ALA:HB2	1.99	0.44
1:C:98:ARG:HD3	1:C:122:VAL:O	2.17	0.44
1:E:46:VAL:HG22	1:E:72:ILE:HG12	1.99	0.44
1:B:6:ARG:O	1:B:92:LEU:HD23	2.17	0.44
1:B:39:VAL:HG11	1:B:79:ALA:HB1	2.00	0.44
1:A:6:ARG:CG	1:A:9:GLU:HB2	2.47	0.43
1:B:5:MET:CE	1:B:102:TRP:CH2	3.01	0.43
1:C:68:LEU:HA	2:C:140:FAH:HH3A	1.99	0.43
1:D:79:ALA:N	3:D:140:COA:H31	2.33	0.43
1:E:36:ALA:HA	1:E:37:PRO:HD3	1.94	0.43
1:F:5:MET:HE1	1:F:102:TRP:HH2	1.84	0.43
1:E:137:PRO:CD	1:F:84:LEU:HD22	2.48	0.43
1:B:23:VAL:HA	1:B:41:ALA:HB2	1.99	0.43
1:D:124:HIS:ND1	1:D:127:LYS:HB2	2.33	0.43
1:E:133:ARG:NH2	4:E:156:HOH:O	2.52	0.43
1:B:6:ARG:C	1:B:92:LEU:HD23	2.39	0.43
1:A:61:LEU:N	1:A:61:LEU:HD12	2.34	0.42
1:E:57:MET:HE2	1:E:61:LEU:HD11	2.02	0.42

*Continued on next page...*

Continued from previous page...

Atom-1	Atom-2	Interatomic distance (Å)	Clash overlap (Å)
1:D:68:LEU:CD1	1:D:123:ILE:HD11	2.13	0.42
1:E:97:GLY:C	1:E:99:ARG:N	2.71	0.42
1:F:76:HIS:HA	1:F:113:ILE:O	2.20	0.42
1:A:17:VAL:HA	1:A:18:PRO:HD3	1.91	0.42
1:B:5:MET:HE1	1:B:102:TRP:CH2	2.51	0.42
1:D:68:LEU:HD13	1:D:123:ILE:HG12	1.98	0.42
1:A:75:THR:HB	1:A:77:THR:HG23	2.01	0.42
1:C:135:LYS:O	1:D:84:LEU:HD11	2.20	0.42
1:E:17:VAL:HA	1:E:18:PRO:HD3	1.78	0.42
1:E:131:LYS:HE3	1:E:131:LYS:HB3	1.93	0.42
1:E:59:PRO:C	1:E:61:LEU:H	2.21	0.41
1:A:84:LEU:HD12	1:A:84:LEU:N	2.35	0.41
1:E:20:HIS:HE1	1:F:29:GLU:OE1	2.03	0.41
1:A:81:PRO:HG2	1:A:84:LEU:HD13	2.03	0.41
1:B:124:HIS:CD2	1:B:124:HIS:C	2.94	0.41
1:D:91:GLU:CD	1:D:93:ARG:HH12	2.23	0.41
1:A:68:LEU:HA	2:A:140:FAH:HH3	2.02	0.41
1:B:103:ARG:HD2	1:B:116:GLY:O	2.21	0.41
1:E:125:LEU:HD12	1:E:125:LEU:HA	1.91	0.41
1:C:73:CYS:O	1:C:116:GLY:HA3	2.21	0.41
1:C:75:THR:HB	1:C:77:THR:HG23	2.02	0.41
1:C:35:GLU:H	1:C:35:GLU:HG2	1.53	0.40
1:E:58:ALA:N	1:E:59:PRO:CD	2.83	0.40

All (3) symmetry-related close contacts are listed below. The label for Atom-2 includes the symmetry operator and encoded unit-cell translations to be applied.

Atom-1	Atom-2	Interatomic distance (Å)	Clash overlap (Å)
1:E:103:ARG:NH2	1:F:73:CYS:SG[2_453]	0.56	1.64
1:E:103:ARG:CZ	1:F:73:CYS:SG[2_453]	1.78	0.42
1:E:103:ARG:NH2	1:F:73:CYS:CB[2_453]	1.93	0.27

## 5.3 Torsion angles

### 5.3.1 Protein backbone

In the following table, the Percentiles column shows the percent Ramachandran outliers of the chain as a percentile score with respect to all X-ray entries followed by that with respect to entries of similar resolution.



The Analysed column shows the number of residues for which the backbone conformation was analysed, and the total number of residues.

Mol	Chain	Analysed	Favoured	Allowed	Outliers	Percentiles	
1	A	133/143 (93%)	131 (98%)	1 (1%)	1 (1%)	16	12
1	B	131/143 (92%)	131 (100%)	0	0	100	100
1	C	129/143 (90%)	126 (98%)	2 (2%)	1 (1%)	16	12
1	D	123/143 (86%)	121 (98%)	2 (2%)	0	100	100
1	E	126/143 (88%)	119 (94%)	6 (5%)	1 (1%)	16	12
1	F	131/143 (92%)	126 (96%)	5 (4%)	0	100	100
All	All	773/858 (90%)	754 (98%)	16 (2%)	3 (0%)	30	27

All (3) Ramachandran outliers are listed below:

Mol	Chain	Res	Type
1	A	3	ASP
1	C	63	PRO
1	E	94	SER

### 5.3.2 Protein sidechains ⓘ

In the following table, the Percentiles column shows the percent sidechain outliers of the chain as a percentile score with respect to all X-ray entries followed by that with respect to entries of similar resolution.

The Analysed column shows the number of residues for which the sidechain conformation was analysed, and the total number of residues.

Mol	Chain	Analysed	Rotameric	Outliers	Percentiles	
1	A	108/113 (96%)	105 (97%)	3 (3%)	38	40
1	B	109/113 (96%)	106 (97%)	3 (3%)	38	40
1	C	107/113 (95%)	105 (98%)	2 (2%)	52	57
1	D	102/113 (90%)	99 (97%)	3 (3%)	37	39
1	E	105/113 (93%)	101 (96%)	4 (4%)	28	28
1	F	109/113 (96%)	106 (97%)	3 (3%)	38	40
All	All	640/678 (94%)	622 (97%)	18 (3%)	38	40

All (18) residues with a non-rotameric sidechain are listed below:

Mol	Chain	Res	Type
1	A	35	GLU
1	A	72	ILE
1	A	95	VAL
1	B	13	HIS
1	B	98	ARG
1	B	125	LEU
1	C	62	GLU
1	C	72	ILE
1	D	13	HIS
1	D	125	LEU
1	D	126	GLU
1	E	93	ARG
1	E	95	VAL
1	E	125	LEU
1	E	126	GLU
1	F	13	HIS
1	F	26	LEU
1	F	77	THR

Sometimes sidechains can be flipped to improve hydrogen bonding and reduce clashes. All (11) such sidechains are listed below:

Mol	Chain	Res	Type
1	A	20	HIS
1	A	129	ASN
1	B	124	HIS
1	B	129	ASN
1	B	134	GLN
1	C	129	ASN
1	E	20	HIS
1	E	107	HIS
1	E	129	ASN
1	F	129	ASN
1	F	134	GLN

### 5.3.3 RNA ⓘ

There are no RNA molecules in this entry.

## 5.4 Non-standard residues in protein, DNA, RNA chains ⓘ

There are no non-standard protein/DNA/RNA residues in this entry.

## 5.5 Carbohydrates [i](#)

There are no oligosaccharides in this entry.

## 5.6 Ligand geometry [i](#)

4 ligands are modelled in this entry.

In the following table, the Counts columns list the number of bonds (or angles) for which Mogul statistics could be retrieved, the number of bonds (or angles) that are observed in the model and the number of bonds (or angles) that are defined in the Chemical Component Dictionary. The Link column lists molecule types, if any, to which the group is linked. The Z score for a bond length (or angle) is the number of standard deviations the observed value is removed from the expected value. A bond length (or angle) with  $|Z| > 2$  is considered an outlier worth inspection. RMSZ is the root-mean-square of all Z scores of the bond lengths (or angles).

Mol	Type	Chain	Res	Link	Bond lengths			Bond angles		
					Counts	RMSZ	$\# Z  > 2$	Counts	RMSZ	$\# Z  > 2$
3	COA	B	140	-	7,8,50	0.43	0	7,8,75	1.04	0
3	COA	D	140	-	7,8,50	0.56	0	7,8,75	0.74	0
2	FAH	C	140	-	3,4,4	1.35	1 (33%)	2,4,4	0.55	0
2	FAH	A	140	-	3,4,4	0.85	0	2,4,4	0.74	0

In the following table, the Chirals column lists the number of chiral outliers, the number of chiral centers analysed, the number of these observed in the model and the number defined in the Chemical Component Dictionary. Similar counts are reported in the Torsion and Rings columns. '-' means no outliers of that kind were identified.

Mol	Type	Chain	Res	Link	Chirals	Torsions	Rings
3	COA	B	140	-	-	3/7/7/64	-
3	COA	D	140	-	-	3/7/7/64	-
2	FAH	C	140	-	-	1/1/2/2	-
2	FAH	A	140	-	-	0/1/2/2	-

All (1) bond length outliers are listed below:

Mol	Chain	Res	Type	Atoms	Z	Observed(Å)	Ideal(Å)
2	C	140	FAH	OXT-C	-2.01	1.24	1.30

There are no bond angle outliers.

There are no chirality outliers.

All (7) torsion outliers are listed below:

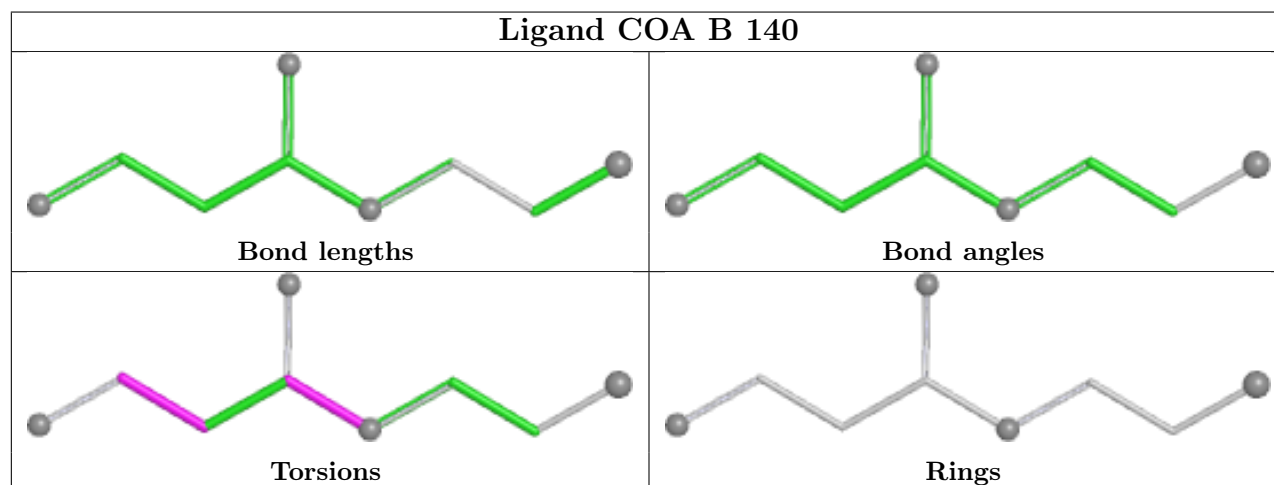
Mol	Chain	Res	Type	Atoms
2	C	140	FAH	O-C-CH3-F
3	B	140	COA	C6P-C5P-N4P-C3P
3	D	140	COA	C6P-C5P-N4P-C3P
3	B	140	COA	O5P-C5P-N4P-C3P
3	D	140	COA	O5P-C5P-N4P-C3P
3	B	140	COA	C5P-C6P-C7P-N8P
3	D	140	COA	C2P-C3P-N4P-C5P

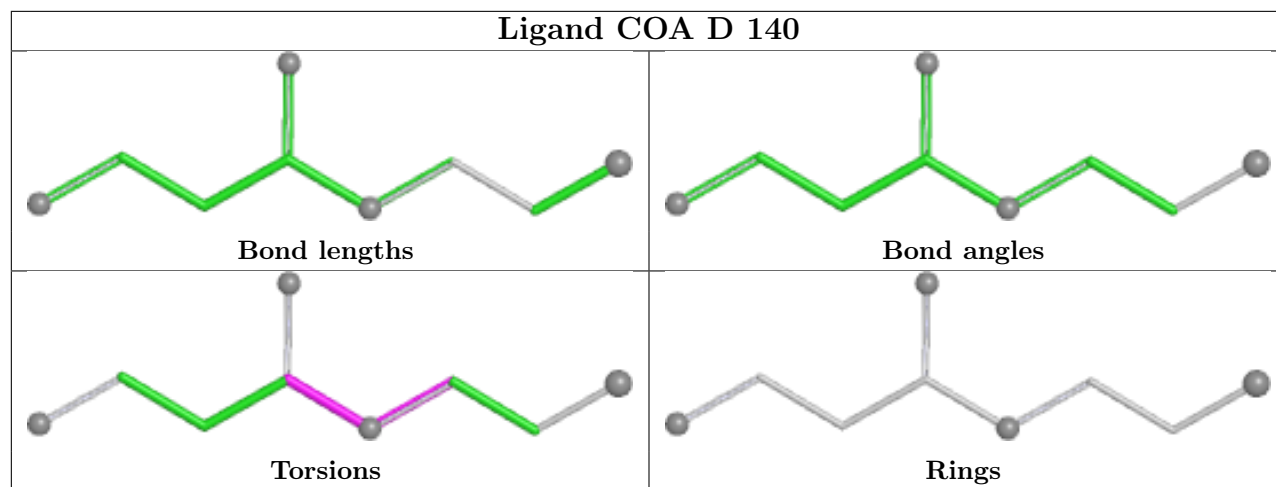
There are no ring outliers.

4 monomers are involved in 13 short contacts:

Mol	Chain	Res	Type	Clashes	Symm-Clashes
3	B	140	COA	2	0
3	D	140	COA	2	0
2	C	140	FAH	5	0
2	A	140	FAH	4	0

The following is a two-dimensional graphical depiction of Mogul quality analysis of bond lengths, bond angles, torsion angles, and ring geometry for all instances of the Ligand of Interest. In addition, ligands with molecular weight > 250 and outliers as shown on the validation Tables will also be included. For torsion angles, if less than 5% of the Mogul distribution of torsion angles is within 10 degrees of the torsion angle in question, then that torsion angle is considered an outlier. Any bond that is central to one or more torsion angles identified as an outlier by Mogul will be highlighted in the graph. For rings, the root-mean-square deviation (RMSD) between the ring in question and similar rings identified by Mogul is calculated over all ring torsion angles. If the average RMSD is greater than 60 degrees and the minimal RMSD between the ring in question and any Mogul-identified rings is also greater than 60 degrees, then that ring is considered an outlier. The outliers are highlighted in purple. The color gray indicates Mogul did not find sufficient equivalents in the CSD to analyse the geometry.





## 5.7 Other polymers [i](#)

There are no such residues in this entry.

## 5.8 Polymer linkage issues [i](#)

There are no chain breaks in this entry.

## 6 Fit of model and data

### 6.1 Protein, DNA and RNA chains

In the following table, the column labelled ‘#RSRZ> 2’ contains the number (and percentage) of RSRZ outliers, followed by percent RSRZ outliers for the chain as percentile scores relative to all X-ray entries and entries of similar resolution. The OWAB column contains the minimum, median, 95<sup>th</sup> percentile and maximum values of the occupancy-weighted average B-factor per residue. The column labelled ‘Q< 0.9’ lists the number of (and percentage) of residues with an average occupancy less than 0.9.

Mol	Chain	Analysed	<RSRZ>	#RSRZ>2	OWAB(Å <sup>2</sup> )	Q<0.9
1	A	135/143 (94%)	0.32	8 (5%) 29 27	19, 26, 42, 53	0
1	B	133/143 (93%)	0.39	10 (7%) 22 20	20, 27, 46, 60	0
1	C	131/143 (91%)	0.60	15 (11%) 11 10	20, 30, 43, 53	0
1	D	125/143 (87%)	0.50	8 (6%) 27 25	20, 28, 46, 63	0
1	E	128/143 (89%)	1.26	25 (19%) 4 3	25, 36, 54, 76	0
1	F	133/143 (93%)	0.83	18 (13%) 8 7	22, 33, 50, 71	0
All	All	785/858 (91%)	0.64	84 (10%) 12 11	19, 30, 49, 76	0

All (84) RSRZ outliers are listed below:

Mol	Chain	Res	Type	RSRZ
1	C	60	TYR	7.8
1	E	60	TYR	5.5
1	E	95	VAL	5.3
1	E	93	ARG	5.0
1	F	68	LEU	4.9
1	F	95	VAL	4.9
1	E	61	LEU	4.9
1	E	94	SER	4.9
1	A	3	ASP	4.7
1	E	62	GLU	4.5
1	D	68	LEU	4.4
1	F	35	GLU	4.3
1	C	95	VAL	4.3
1	C	97	GLY	4.2
1	A	2	LYS	4.0
1	F	34	ALA	3.9
1	E	98	ARG	3.9
1	E	103	ARG	3.9
1	E	35	GLU	3.8

*Continued on next page...*

*Continued from previous page...*

Mol	Chain	Res	Type	RSRZ
1	E	59	PRO	3.7
1	E	92	LEU	3.5
1	C	99	ARG	3.4
1	E	99	ARG	3.4
1	E	110	VAL	3.3
1	B	35	GLU	3.2
1	E	96	GLU	3.2
1	C	61	LEU	3.2
1	E	97	GLY	3.2
1	C	9	GLU	3.1
1	B	134	GLN	3.0
1	B	93	ARG	3.0
1	D	35	GLU	3.0
1	C	59	PRO	3.0
1	A	61	LEU	3.0
1	A	4	GLY	2.9
1	A	133	ARG	2.9
1	F	5	MET	2.9
1	D	127	LYS	2.9
1	F	7	VAL	2.9
1	F	101	SER	2.9
1	C	62	GLU	2.9
1	A	11	PHE	2.8
1	B	6	ARG	2.8
1	C	10	ARG	2.8
1	E	10	ARG	2.8
1	E	77	THR	2.7
1	A	35	GLU	2.7
1	C	68	LEU	2.7
1	C	7	VAL	2.7
1	B	98	ARG	2.7
1	E	38	GLU	2.6
1	F	102	TRP	2.6
1	C	23	VAL	2.6
1	C	35	GLU	2.6
1	B	126	GLU	2.6
1	E	34	ALA	2.6
1	E	23	VAL	2.6
1	F	6	ARG	2.6
1	D	64	GLY	2.5
1	E	11	PHE	2.5
1	E	109	GLY	2.5

*Continued on next page...*

*Continued from previous page...*

Mol	Chain	Res	Type	RSRZ
1	E	102	TRP	2.5
1	C	96	GLU	2.4
1	D	124	HIS	2.3
1	B	112	GLU	2.3
1	E	100	LEU	2.3
1	F	73	CYS	2.3
1	F	98	ARG	2.3
1	B	5	MET	2.3
1	B	7	VAL	2.2
1	F	84	LEU	2.2
1	F	136	THR	2.2
1	E	127	LYS	2.2
1	D	29	GLU	2.2
1	F	100	LEU	2.2
1	D	84	LEU	2.1
1	C	91	GLU	2.1
1	D	102	TRP	2.1
1	B	69	GLY	2.1
1	A	6	ARG	2.1
1	F	99	ARG	2.1
1	F	92	LEU	2.1
1	F	8	GLY	2.0
1	F	63	PRO	2.0

## 6.2 Non-standard residues in protein, DNA, RNA chains [i](#)

There are no non-standard protein/DNA/RNA residues in this entry.

## 6.3 Carbohydrates [i](#)

There are no monosaccharides in this entry.

## 6.4 Ligands [i](#)

In the following table, the Atoms column lists the number of modelled atoms in the group and the number defined in the chemical component dictionary. The B-factors column lists the minimum, median, 95<sup>th</sup> percentile and maximum values of B factors of atoms in the group. The column labelled 'Q< 0.9' lists the number of atoms with occupancy less than 0.9.

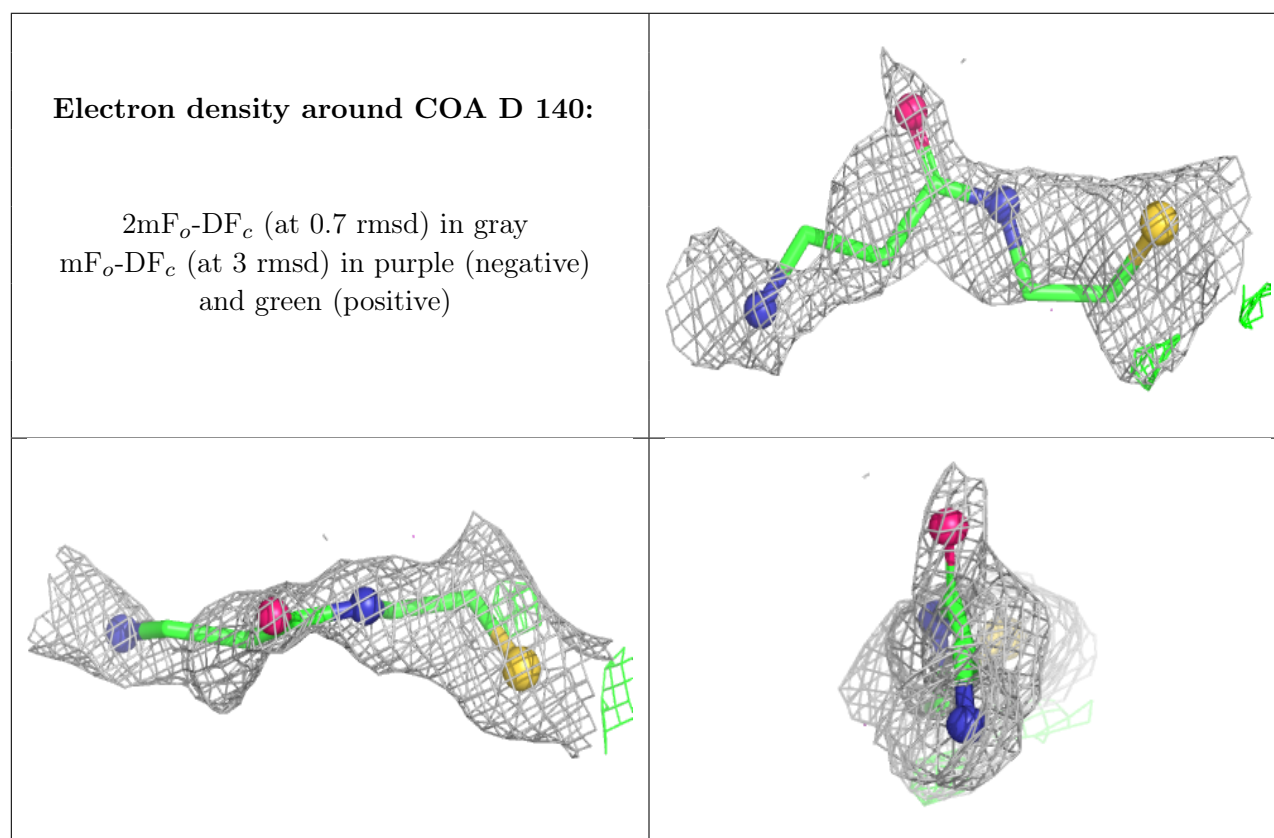
*Continued on next page...*

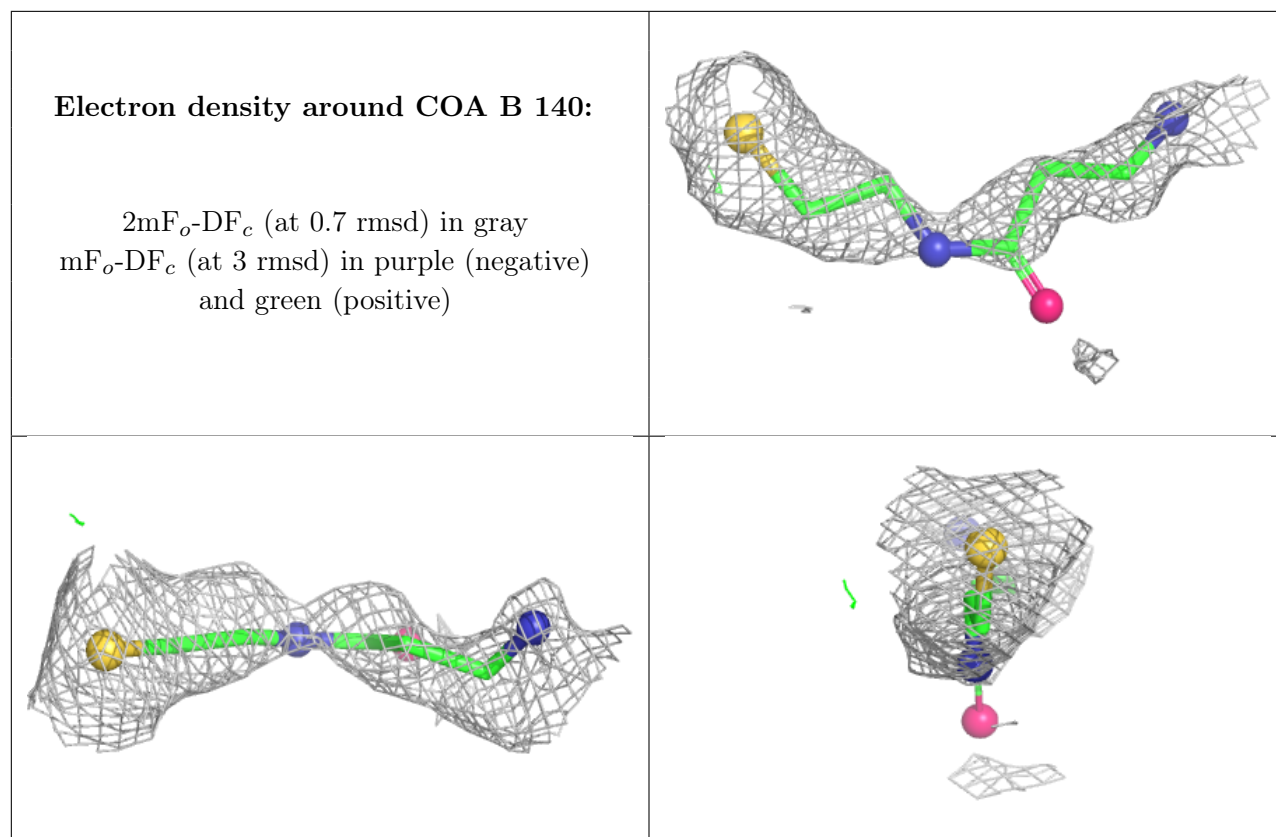


*Continued from previous page...*

Mol	Type	Chain	Res	Atoms	RSCC	RSR	B-factors( $\text{\AA}^2$ )	Q<0.9
2	FAH	A	140	5/5	0.77	0.23	56,58,59,60	0
2	FAH	C	140	5/5	0.77	0.20	58,60,61,61	0
3	COA	D	140	9/48	0.82	0.21	69,71,72,72	0
3	COA	B	140	9/48	0.84	0.23	64,66,68,69	0

The following is a graphical depiction of the model fit to experimental electron density of all instances of the Ligand of Interest. In addition, ligands with molecular weight > 250 and outliers as shown on the geometry validation Tables will also be included. Each fit is shown from different orientation to approximate a three-dimensional view.





## 6.5 Other polymers [i](#)

There are no such residues in this entry.