



Full wwPDB X-ray Structure Validation Report ⓘ

Jun 12, 2024 – 08:28 AM EDT

PDB ID : 6NWD
Title : X-ray Crystallographic structure of Gloeobacter rhodopsin
Authors : Ernst, O.P.; Morizumi, T.; Ou, W.L.
Deposited on : 2019-02-06
Resolution : 2.00 Å(reported)

This is a Full wwPDB X-ray Structure Validation Report for a publicly released PDB entry.

We welcome your comments at validation@mail.wwpdb.org

A user guide is available at

<https://www.wwpdb.org/validation/2017/XrayValidationReportHelp>

with specific help available everywhere you see the ⓘ symbol.

The types of validation reports are described at

<http://www.wwpdb.org/validation/2017/FAQs#types>.

The following versions of software and data (see [references ⓘ](#)) were used in the production of this report:

MolProbity	:	4.02b-467
Mogul	:	1.8.5 (274361), CSD as541be (2020)
Xtriage (Phenix)	:	1.13
EDS	:	2.36.2
buster-report	:	1.1.7 (2018)
Percentile statistics	:	20191225.v01 (using entries in the PDB archive December 25th 2019)
Refmac	:	5.8.0158
CCP4	:	7.0.044 (Gargrove)
Ideal geometry (proteins)	:	Engh & Huber (2001)
Ideal geometry (DNA, RNA)	:	Parkinson et al. (1996)
Validation Pipeline (wwPDB-VP)	:	2.36.2

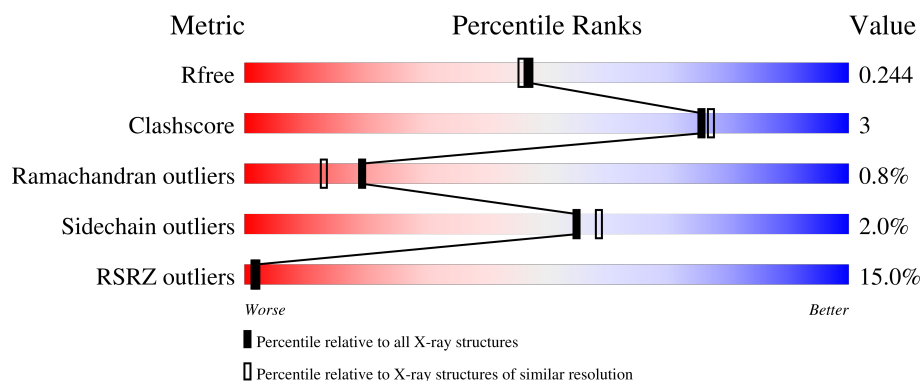
1 Overall quality at a glance

The following experimental techniques were used to determine the structure:

X-RAY DIFFRACTION

The reported resolution of this entry is 2.00 Å.

Percentile scores (ranging between 0-100) for global validation metrics of the entry are shown in the following graphic. The table shows the number of entries on which the scores are based.



Metric	Whole archive (#Entries)	Similar resolution (#Entries, resolution range(Å))
R_{free}	130704	8085 (2.00-2.00)
Clashscore	141614	9178 (2.00-2.00)
Ramachandran outliers	138981	9054 (2.00-2.00)
Sidechain outliers	138945	9053 (2.00-2.00)
RSRZ outliers	127900	7900 (2.00-2.00)

The table below summarises the geometric issues observed across the polymeric chains and their fit to the electron density. The red, orange, yellow and green segments of the lower bar indicate the fraction of residues that contain outliers for ≥ 3 , 2, 1 and 0 types of geometric quality criteria respectively. A grey segment represents the fraction of residues that are not modelled. The numeric value for each fraction is indicated below the corresponding segment, with a dot representing fractions $\leq 5\%$. The upper red bar (where present) indicates the fraction of residues that have poor fit to the electron density. The numeric value is given above the bar.

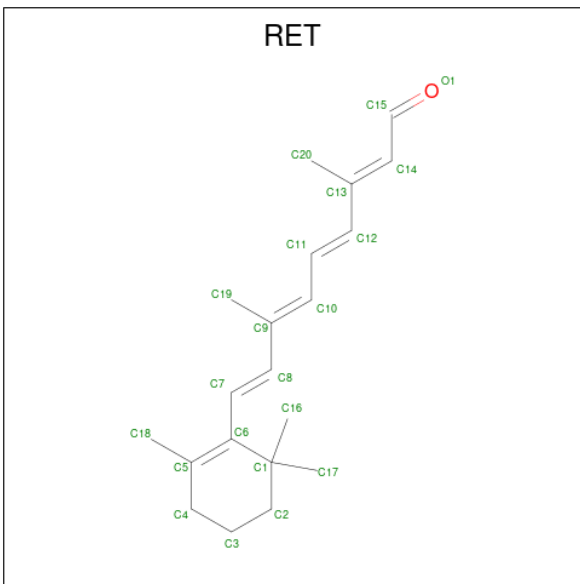
Mol	Chain	Length	Quality of chain
1	A	298	<div> <div>12%</div> <div>77%</div> <div>5%</div> <div>17%</div> </div>

In the tables below, the ZeroOcc column contains the number of atoms modelled with zero occupancy, the AltConf column contains the number of residues with at least one atom in alternate conformation and the Trace column contains the number of residues modelled with at most 2 atoms.

- Molecule 1 is a protein called Gll0198 protein.

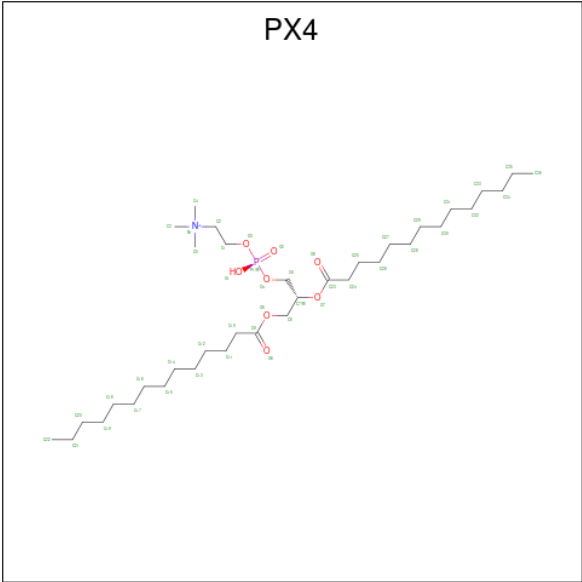
Mol	Chain	Residues	Atoms					ZeroOcc	AltConf	Trace
1	A	246	Total 1924	C 1284	N 302	O 334	S 4	0	0	0

- Molecule 2 is RETINAL (three-letter code: RET) (formula: $C_{20}H_{28}O$) (labeled as "Ligand of Interest" by depositor).



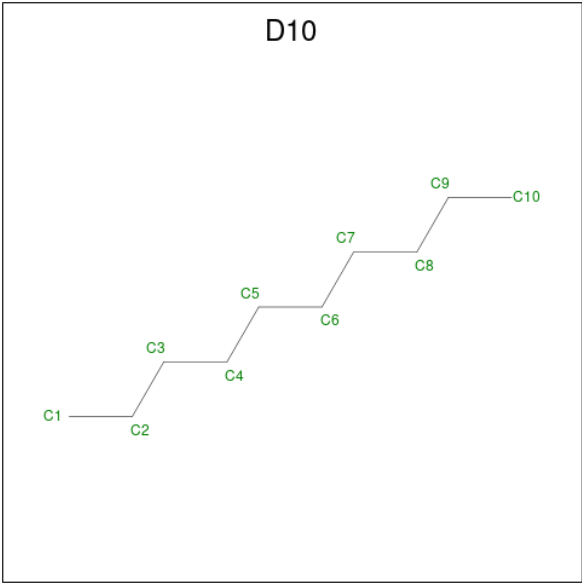
Mol	Chain	Residues	Atoms	ZeroOcc	AltConf
2	A	1	Total C 20 20	0	0

- Molecule 3 is 1,2-DIMYRISTOYL-SN-GLYCERO-3-PHOSPHOCHOLINE (three-letter code: PX4) (formula: $C_{36}H_{73}NO_8P$).



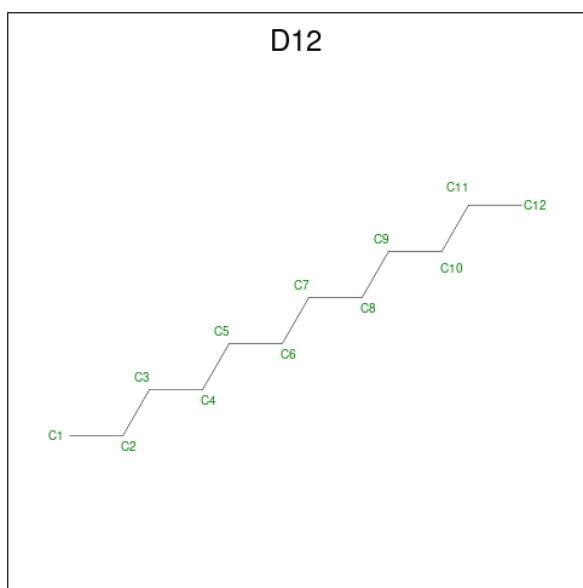
Mol	Chain	Residues	Atoms				ZeroOcc	AltConf
3	A	1	Total	C	O	P	0	0
			34	25	8	1		
3	A	1	Total	C	O	P	0	0
			34	25	8	1		
3	A	1	Total	C	O	P	0	0
			34	25	8	1		

- Molecule 4 is DECANE (three-letter code: D10) (formula: C₁₀H₂₂).



Mol	Chain	Residues	Atoms		ZeroOcc	AltConf
4	A	1	Total	C	0	0
			10	10		

- Molecule 5 is DODECANE (three-letter code: D12) (formula: $C_{12}H_{26}$).



Mol	Chain	Residues	Atoms		ZeroOcc	AltConf
5	A	1	Total	C	0	0
			12	12		

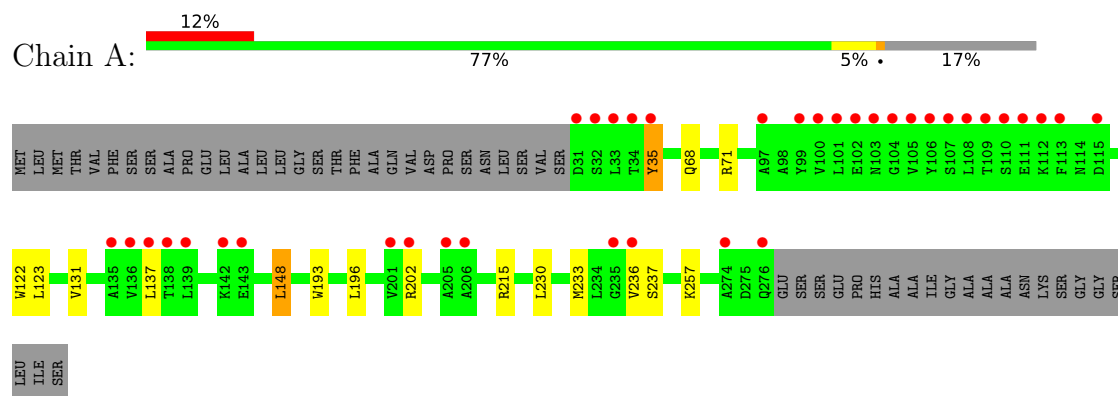
- Molecule 6 is water.

Mol	Chain	Residues	Atoms		ZeroOcc	AltConf
6	A	14	Total	O	0	0
			14	14		

3 Residue-property plots [i](#)

These plots are drawn for all protein, RNA, DNA and oligosaccharide chains in the entry. The first graphic for a chain summarises the proportions of the various outlier classes displayed in the second graphic. The second graphic shows the sequence view annotated by issues in geometry and electron density. Residues are color-coded according to the number of geometric quality criteria for which they contain at least one outlier: green = 0, yellow = 1, orange = 2 and red = 3 or more. A red dot above a residue indicates a poor fit to the electron density ($RSRZ > 2$). Stretches of 2 or more consecutive residues without any outlier are shown as a green connector. Residues present in the sample, but not in the model, are shown in grey.

- Molecule 1: Gll0198 protein



4 Data and refinement statistics

Property	Value	Source
Space group	C 2 2 21	Depositor
Cell constants a, b, c, α , β , γ	54.25Å 129.25Å 82.65Å 90.00° 90.00° 90.00°	Depositor
Resolution (Å)	42.79 – 2.00 50.02 – 2.00	Depositor EDS
% Data completeness (in resolution range)	96.4 (42.79-2.00) 96.4 (50.02-2.00)	Depositor EDS
R_{merge}	0.04	Depositor
R_{sym}	(Not available)	Depositor
$\langle I/\sigma(I) \rangle$ ¹	2.23 (at 2.00Å)	Xtriage
Refinement program	PHENIX (1.15.2_3472)	Depositor
R, R_{free}	0.230 , 0.244 0.230 , 0.244	Depositor DCC
R_{free} test set	927 reflections (4.80%)	wwPDB-VP
Wilson B-factor (Å ²)	31.7	Xtriage
Anisotropy	0.128	Xtriage
Bulk solvent k_{sol} (e/Å ³), B_{sol} (Å ²)	0.39 , 69.5	EDS
L-test for twinning ²	$\langle L \rangle = 0.49$, $\langle L^2 \rangle = 0.33$	Xtriage
Estimated twinning fraction	No twinning to report.	Xtriage
F_o, F_c correlation	0.93	EDS
Total number of atoms	2082	wwPDB-VP
Average B, all atoms (Å ²)	38.0	wwPDB-VP

Xtriage's analysis on translational NCS is as follows: *The largest off-origin peak in the Patterson function is 8.48% of the height of the origin peak. No significant pseudotranslation is detected.*

¹Intensities estimated from amplitudes.

²Theoretical values of $\langle |L| \rangle$, $\langle L^2 \rangle$ for acentric reflections are 0.5, 0.333 respectively for untwinned datasets, and 0.375, 0.2 for perfectly twinned datasets.

5 Model quality

5.1 Standard geometry

Bond lengths and bond angles in the following residue types are not validated in this section: D10, PX4, RET, D12

The Z score for a bond length (or angle) is the number of standard deviations the observed value is removed from the expected value. A bond length (or angle) with $|Z| > 5$ is considered an outlier worth inspection. RMSZ is the root-mean-square of all Z scores of the bond lengths (or angles).

Mol	Chain	Bond lengths		Bond angles	
		RMSZ	# Z >5	RMSZ	# Z >5
1	A	0.29	0/1973	0.44	0/2702

There are no bond length outliers.

There are no bond angle outliers.

There are no chirality outliers.

There are no planarity outliers.

5.2 Too-close contacts

In the following table, the Non-H and H(model) columns list the number of non-hydrogen atoms and hydrogen atoms in the chain respectively. The H(added) column lists the number of hydrogen atoms added and optimized by MolProbity. The Clashes column lists the number of clashes within the asymmetric unit, whereas Symm-Clashes lists symmetry-related clashes.

Mol	Chain	Non-H	H(model)	H(added)	Clashes	Symm-Clashes
1	A	1924	0	1982	8	0
2	A	20	0	27	3	0
3	A	102	0	132	4	0
4	A	10	0	22	0	0
5	A	12	0	26	0	0
6	A	14	0	0	0	0
All	All	2082	0	2189	13	0

The all-atom clashscore is defined as the number of clashes found per 1000 atoms (including hydrogen atoms). The all-atom clashscore for this structure is 3.

All (13) close contacts within the same asymmetric unit are listed below, sorted by their clash magnitude.

Atom-1	Atom-2	Interatomic distance (Å)	Clash overlap (Å)
1:A:131:VAL:HG22	1:A:148:LEU:HD11	1.73	0.68
1:A:123:LEU:HD11	3:A:1304:PX4:H51	1.88	0.55
1:A:122:TRP:CD1	2:A:1301:RET:H14	2.42	0.54
1:A:193:TRP:CE3	1:A:215:ARG:HG2	2.47	0.49
1:A:137:LEU:HD11	1:A:196:LEU:HD23	1.95	0.48
1:A:230:LEU:O	1:A:233:MET:HG2	2.14	0.48
2:A:1301:RET:H161	2:A:1301:RET:H8	1.96	0.46
1:A:68:GLN:HA	1:A:71:ARG:HG3	2.00	0.44
3:A:1304:PX4:H30	3:A:1304:PX4:H64	1.99	0.43
2:A:1301:RET:H11	2:A:1301:RET:H191	1.91	0.41
3:A:1304:PX4:H28	3:A:1304:PX4:H22	1.67	0.41
1:A:35:TYR:C	1:A:35:TYR:CD1	2.94	0.41
3:A:1302:PX4:H17	3:A:1302:PX4:H47	2.02	0.40

There are no symmetry-related clashes.

5.3 Torsion angles [i](#)

5.3.1 Protein backbone [i](#)

In the following table, the Percentiles column shows the percent Ramachandran outliers of the chain as a percentile score with respect to all X-ray entries followed by that with respect to entries of similar resolution.

The Analysed column shows the number of residues for which the backbone conformation was analysed, and the total number of residues.

Mol	Chain	Analysed	Favoured	Allowed	Outliers	Percentiles	
1	A	244/298 (82%)	239 (98%)	3 (1%)	2 (1%)	19	13

All (2) Ramachandran outliers are listed below:

Mol	Chain	Res	Type
1	A	236	VAL
1	A	257	LYS

5.3.2 Protein sidechains [i](#)

In the following table, the Percentiles column shows the percent sidechain outliers of the chain as a percentile score with respect to all X-ray entries followed by that with respect to entries of similar resolution.

The Analysed column shows the number of residues for which the sidechain conformation was analysed, and the total number of residues.

Mol	Chain	Analysed	Rotameric	Outliers	Percentiles
1	A	203/243 (84%)	199 (98%)	4 (2%)	55 58

All (4) residues with a non-rotameric sidechain are listed below:

Mol	Chain	Res	Type
1	A	35	TYR
1	A	148	LEU
1	A	202	ARG
1	A	237	SER

Sometimes sidechains can be flipped to improve hydrogen bonding and reduce clashes. There are no such sidechains identified.

5.3.3 RNA [i](#)

There are no RNA molecules in this entry.

5.4 Non-standard residues in protein, DNA, RNA chains [i](#)

There are no non-standard protein/DNA/RNA residues in this entry.

5.5 Carbohydrates [i](#)

There are no monosaccharides in this entry.

5.6 Ligand geometry [i](#)

6 ligands are modelled in this entry.

In the following table, the Counts columns list the number of bonds (or angles) for which Mogul statistics could be retrieved, the number of bonds (or angles) that are observed in the model and the number of bonds (or angles) that are defined in the Chemical Component Dictionary. The Link column lists molecule types, if any, to which the group is linked. The Z score for a bond length (or angle) is the number of standard deviations the observed value is removed from the expected value. A bond length (or angle) with $|Z| > 2$ is considered an outlier worth inspection. RMSZ is the root-mean-square of all Z scores of the bond lengths (or angles).

Mol	Type	Chain	Res	Link	Bond lengths			Bond angles		
					Counts	RMSZ	# Z > 2	Counts	RMSZ	# Z > 2
5	D12	A	1306	-	11,11,11	0.10	0	10,10,10	0.84	0
3	PX4	A	1302	-	33,33,45	1.17	2 (6%)	37,38,53	1.26	2 (5%)
3	PX4	A	1303	-	33,33,45	1.16	2 (6%)	37,38,53	1.23	2 (5%)
4	D10	A	1305	-	9,9,9	0.11	0	8,8,8	0.81	0
3	PX4	A	1304	-	33,33,45	1.16	2 (6%)	37,38,53	1.19	2 (5%)
2	RET	A	1301	1	20,20,21	4.20	11 (55%)	27,27,28	2.42	10 (37%)

In the following table, the Chirals column lists the number of chiral outliers, the number of chiral centers analysed, the number of these observed in the model and the number defined in the Chemical Component Dictionary. Similar counts are reported in the Torsion and Rings columns. '-' means no outliers of that kind were identified.

Mol	Type	Chain	Res	Link	Chirals	Torsions	Rings
5	D12	A	1306	-	-	1/9/9/9	-
3	PX4	A	1302	-	-	21/35/35/49	-
3	PX4	A	1303	-	-	16/35/35/49	-
4	D10	A	1305	-	-	3/7/7/7	-
3	PX4	A	1304	-	-	11/35/35/49	-
2	RET	A	1301	1	-	4/13/30/31	0/1/1/1

All (17) bond length outliers are listed below:

Mol	Chain	Res	Type	Atoms	Z	Observed(Å)	Ideal(Å)
2	A	1301	RET	C5-C6	12.87	1.56	1.34
2	A	1301	RET	C1-C6	-7.48	1.43	1.53
2	A	1301	RET	C2-C3	-6.11	1.37	1.52
2	A	1301	RET	C2-C1	4.84	1.65	1.54
2	A	1301	RET	C4-C5	-4.71	1.41	1.51
3	A	1302	PX4	O5-C9	3.87	1.44	1.33
3	A	1304	PX4	O5-C9	3.78	1.44	1.33
3	A	1303	PX4	O5-C9	3.75	1.44	1.33
2	A	1301	RET	C3-C4	3.68	1.64	1.52
3	A	1302	PX4	O7-C23	3.42	1.43	1.34
3	A	1304	PX4	O7-C23	3.37	1.43	1.34
3	A	1303	PX4	O7-C23	3.35	1.43	1.34
2	A	1301	RET	C8-C9	2.78	1.51	1.45
2	A	1301	RET	C12-C13	2.73	1.51	1.45
2	A	1301	RET	C11-C10	2.72	1.51	1.43
2	A	1301	RET	C7-C6	2.14	1.52	1.45
2	A	1301	RET	C14-C13	2.04	1.35	1.33

All (16) bond angle outliers are listed below:

Mol	Chain	Res	Type	Atoms	Z	Observed(°)	Ideal(°)
2	A	1301	RET	C4-C5-C6	-6.34	113.53	122.73
3	A	1302	PX4	O7-C23-C24	4.39	120.96	111.50
3	A	1303	PX4	O7-C23-C24	4.33	120.83	111.50
3	A	1304	PX4	O7-C23-C24	4.27	120.71	111.50
2	A	1301	RET	C2-C1-C6	3.95	116.56	110.48
2	A	1301	RET	C18-C5-C6	-3.89	120.16	124.53
2	A	1301	RET	C18-C5-C4	3.69	120.70	113.62
2	A	1301	RET	C1-C6-C5	-3.49	117.69	122.61
2	A	1301	RET	C11-C10-C9	-3.37	122.50	127.31
2	A	1301	RET	C3-C4-C5	-3.32	108.14	114.08
3	A	1302	PX4	O5-C9-C10	2.79	120.66	111.91
2	A	1301	RET	C8-C7-C6	-2.70	119.61	127.20
2	A	1301	RET	C17-C1-C16	-2.67	100.35	108.53
3	A	1304	PX4	O5-C9-C10	2.49	119.72	111.91
3	A	1303	PX4	O5-C9-C10	2.37	119.36	111.91
2	A	1301	RET	C1-C6-C7	2.09	121.69	115.78

There are no chirality outliers.

All (56) torsion outliers are listed below:

Mol	Chain	Res	Type	Atoms
2	A	1301	RET	C1-C6-C7-C8
2	A	1301	RET	C5-C6-C7-C8
3	A	1302	PX4	C6-O4-P1-O1
3	A	1302	PX4	C6-O4-P1-O2
3	A	1302	PX4	C6-O4-P1-O3
3	A	1302	PX4	C24-C23-O7-C7
3	A	1303	PX4	C6-O4-P1-O3
3	A	1303	PX4	O8-C23-O7-C7
3	A	1302	PX4	O6-C9-O5-C8
3	A	1302	PX4	O8-C23-O7-C7
3	A	1304	PX4	O8-C23-O7-C7
3	A	1302	PX4	C10-C9-O5-C8
3	A	1303	PX4	C24-C23-O7-C7
3	A	1304	PX4	C24-C23-O7-C7
3	A	1303	PX4	O6-C9-O5-C8
3	A	1303	PX4	C10-C9-O5-C8
2	A	1301	RET	C7-C8-C9-C19
2	A	1301	RET	C7-C8-C9-C10
3	A	1304	PX4	C23-C24-C25-C26
3	A	1303	PX4	C9-C10-C11-C12

Continued on next page...

Continued from previous page...

Mol	Chain	Res	Type	Atoms
3	A	1303	PX4	C23-C24-C25-C26
3	A	1304	PX4	C9-C10-C11-C12
3	A	1303	PX4	C10-C11-C12-C13
3	A	1304	PX4	C30-C31-C32-C33
3	A	1304	PX4	C10-C11-C12-C13
3	A	1302	PX4	C31-C32-C33-C34
3	A	1304	PX4	C25-C26-C27-C28
3	A	1304	PX4	C29-C30-C31-C32
3	A	1302	PX4	C27-C28-C29-C30
3	A	1302	PX4	C25-C26-C27-C28
4	A	1305	D10	C4-C5-C6-C7
3	A	1302	PX4	C6-C7-O7-C23
3	A	1302	PX4	C28-C29-C30-C31
3	A	1303	PX4	O4-C6-C7-O7
3	A	1302	PX4	C6-C7-C8-O5
3	A	1303	PX4	O4-C6-C7-C8
3	A	1303	PX4	C6-O4-P1-O1
3	A	1304	PX4	C11-C12-C13-C14
3	A	1303	PX4	C8-C7-O7-C23
3	A	1304	PX4	C8-C7-O7-C23
3	A	1302	PX4	O7-C7-C8-O5
5	A	1306	D12	C1-C2-C3-C4
3	A	1303	PX4	C6-O4-P1-O2
4	A	1305	D10	C7-C8-C9-C10
3	A	1302	PX4	C24-C25-C26-C27
3	A	1303	PX4	C12-C13-C14-C15
3	A	1302	PX4	C32-C33-C34-C35
3	A	1302	PX4	C11-C12-C13-C14
3	A	1302	PX4	C23-C24-C25-C26
3	A	1303	PX4	C28-C29-C30-C31
3	A	1303	PX4	C11-C12-C13-C14
3	A	1302	PX4	O7-C23-C24-C25
4	A	1305	D10	C6-C7-C8-C9
3	A	1302	PX4	C29-C30-C31-C32
3	A	1302	PX4	O8-C23-C24-C25
3	A	1304	PX4	O7-C23-C24-C25

There are no ring outliers.

3 monomers are involved in 7 short contacts:

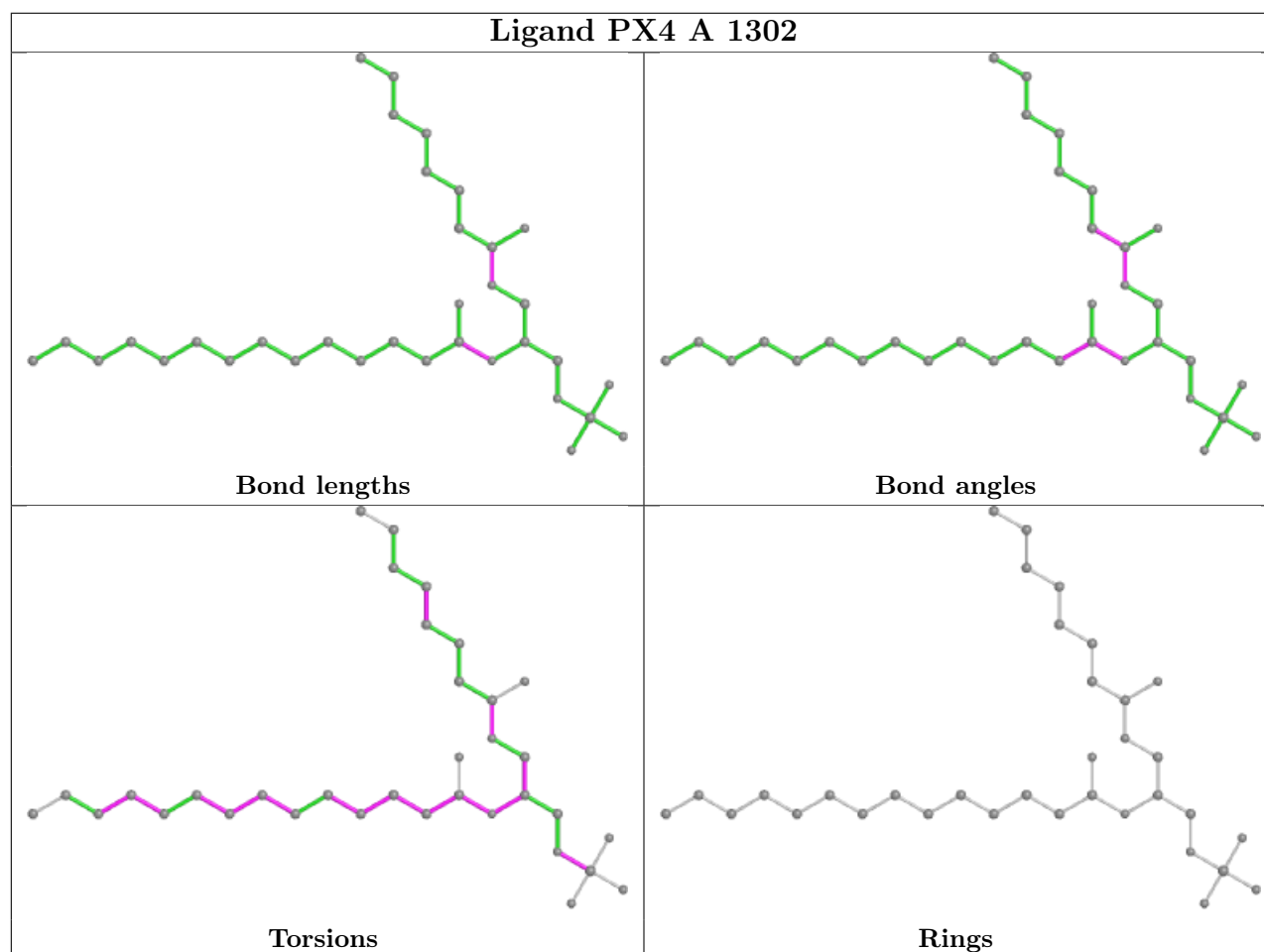
Mol	Chain	Res	Type	Clashes	Symm-Clashes
3	A	1302	PX4	1	0

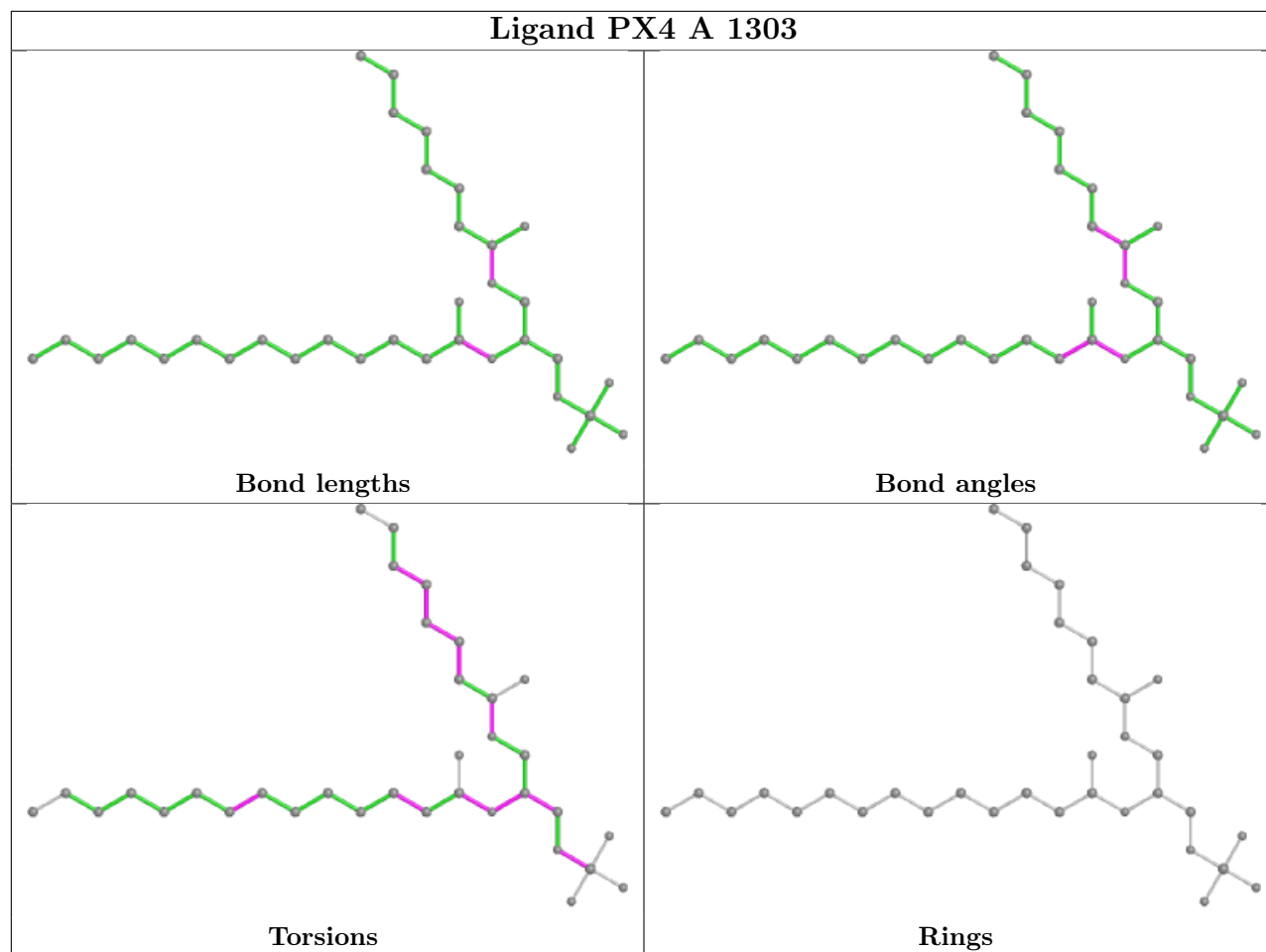
Continued on next page...

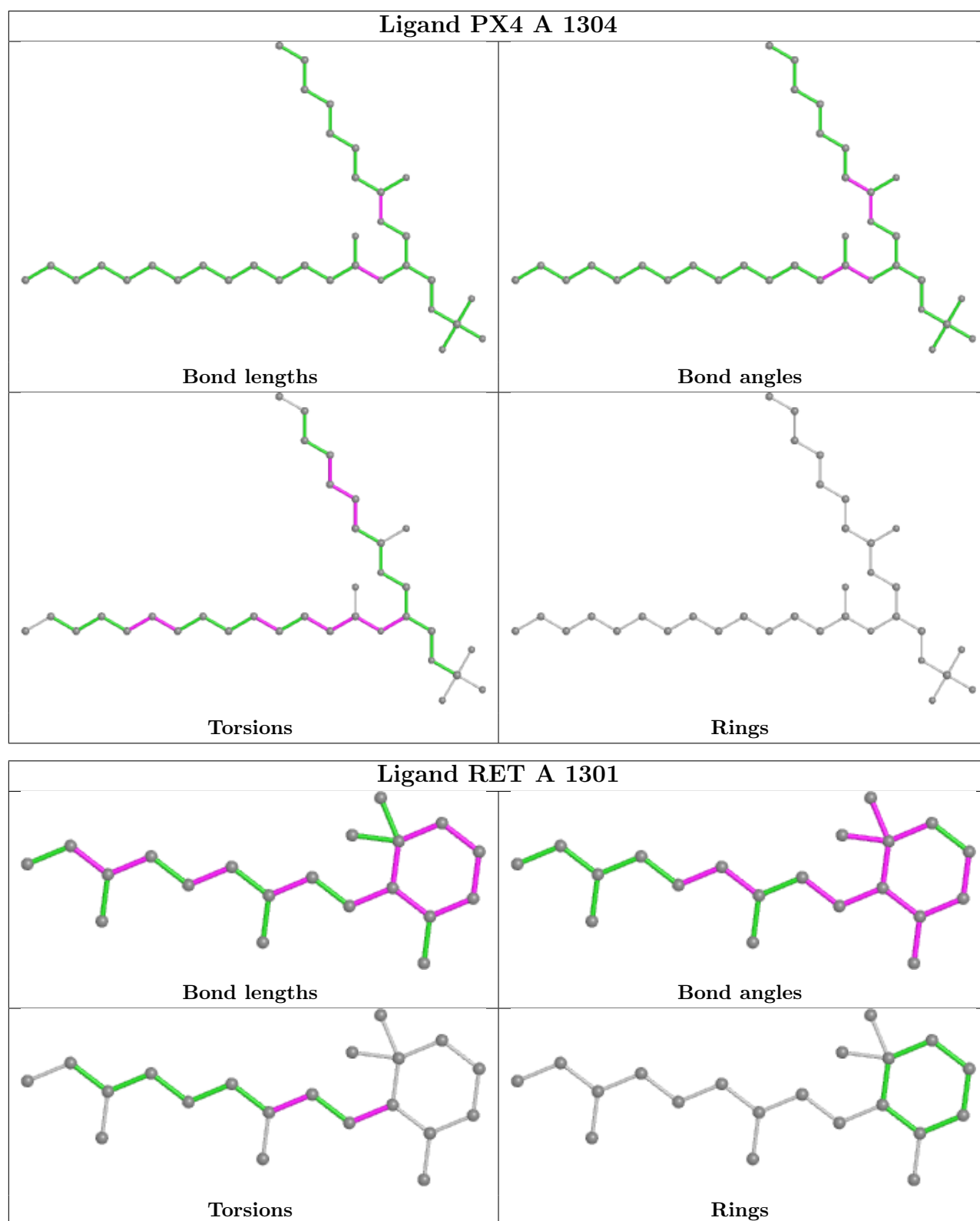
Continued from previous page...

Mol	Chain	Res	Type	Clashes	Symm-Clashes
3	A	1304	PX4	3	0
2	A	1301	RET	3	0

The following is a two-dimensional graphical depiction of Mogul quality analysis of bond lengths, bond angles, torsion angles, and ring geometry for all instances of the Ligand of Interest. In addition, ligands with molecular weight > 250 and outliers as shown on the validation Tables will also be included. For torsion angles, if less than 5% of the Mogul distribution of torsion angles is within 10 degrees of the torsion angle in question, then that torsion angle is considered an outlier. Any bond that is central to one or more torsion angles identified as an outlier by Mogul will be highlighted in the graph. For rings, the root-mean-square deviation (RMSD) between the ring in question and similar rings identified by Mogul is calculated over all ring torsion angles. If the average RMSD is greater than 60 degrees and the minimal RMSD between the ring in question and any Mogul-identified rings is also greater than 60 degrees, then that ring is considered an outlier. The outliers are highlighted in purple. The color gray indicates Mogul did not find sufficient equivalents in the CSD to analyse the geometry.







5.7 Other polymers [i](#)

There are no such residues in this entry.

5.8 Polymer linkage issues ⓘ

There are no chain breaks in this entry.

6 Fit of model and data ⓘ

6.1 Protein, DNA and RNA chains ⓘ

In the following table, the column labelled ‘#RSRZ> 2’ contains the number (and percentage) of RSRZ outliers, followed by percent RSRZ outliers for the chain as percentile scores relative to all X-ray entries and entries of similar resolution. The OWAB column contains the minimum, median, 95th percentile and maximum values of the occupancy-weighted average B-factor per residue. The column labelled ‘Q< 0.9’ lists the number of (and percentage) of residues with an average occupancy less than 0.9.

Mol	Chain	Analysed	<RSRZ>	#RSRZ>2	OWAB(Å ²)	Q<0.9
1	A	246/298 (82%)	0.84	37 (15%) 2 2	19, 33, 66, 87	0

All (37) RSRZ outliers are listed below:

Mol	Chain	Res	Type	RSRZ
1	A	105	VAL	11.2
1	A	35	TYR	8.7
1	A	110	SER	7.6
1	A	103	ASN	6.6
1	A	138	THR	6.2
1	A	106	TYR	6.2
1	A	32	SER	5.6
1	A	202	ARG	5.3
1	A	136	VAL	5.2
1	A	107	SER	4.9
1	A	109	THR	4.7
1	A	112	LYS	4.5
1	A	206	ALA	4.3
1	A	101	LEU	4.2
1	A	111	GLU	4.1
1	A	102	GLU	4.1
1	A	100	VAL	4.1
1	A	97	ALA	4.0
1	A	33	LEU	3.9
1	A	235	GLY	3.7
1	A	113	PHE	3.6
1	A	135	ALA	3.4
1	A	31	ASP	3.2
1	A	236	VAL	3.2
1	A	137	LEU	3.2
1	A	143	GLU	3.1
1	A	201	VAL	3.1

Continued on next page...

Continued from previous page...

Mol	Chain	Res	Type	RSRZ
1	A	115	ASP	3.0
1	A	104	GLY	3.0
1	A	99	TYR	2.8
1	A	108	LEU	2.4
1	A	139	LEU	2.3
1	A	34	THR	2.3
1	A	142	LYS	2.3
1	A	276	GLN	2.2
1	A	274	ALA	2.0
1	A	205	ALA	2.0

6.2 Non-standard residues in protein, DNA, RNA chains [i](#)

There are no non-standard protein/DNA/RNA residues in this entry.

6.3 Carbohydrates [i](#)

There are no monosaccharides in this entry.

6.4 Ligands [i](#)

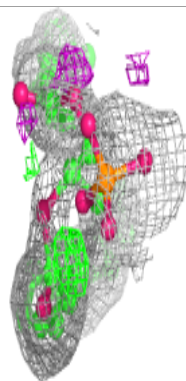
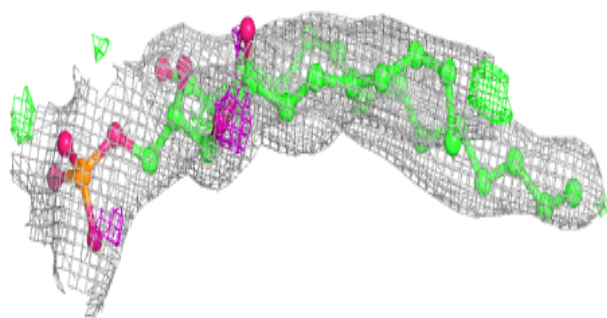
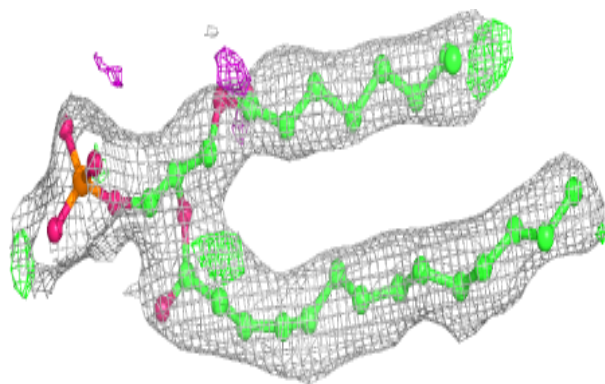
In the following table, the Atoms column lists the number of modelled atoms in the group and the number defined in the chemical component dictionary. The B-factors column lists the minimum, median, 95th percentile and maximum values of B factors of atoms in the group. The column labelled 'Q< 0.9' lists the number of atoms with occupancy less than 0.9.

Mol	Type	Chain	Res	Atoms	RSCC	RSR	B-factors(\AA^2)	Q<0.9
5	D12	A	1306	12/12	0.65	0.31	38,47,56,58	0
3	PX4	A	1302	34/46	0.73	0.24	45,55,73,76	0
3	PX4	A	1304	34/46	0.74	0.28	57,71,82,84	0
3	PX4	A	1303	34/46	0.79	0.22	36,60,77,86	0
4	D10	A	1305	10/10	0.84	0.20	37,39,48,61	0
2	RET	A	1301	20/21	0.90	0.18	17,23,26,33	0

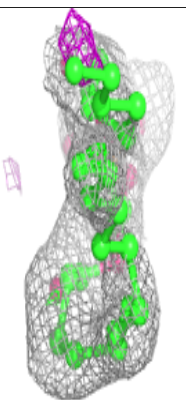
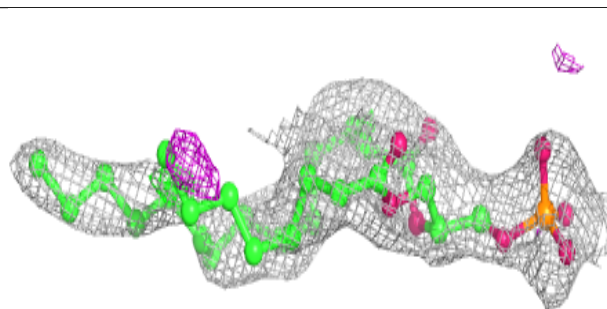
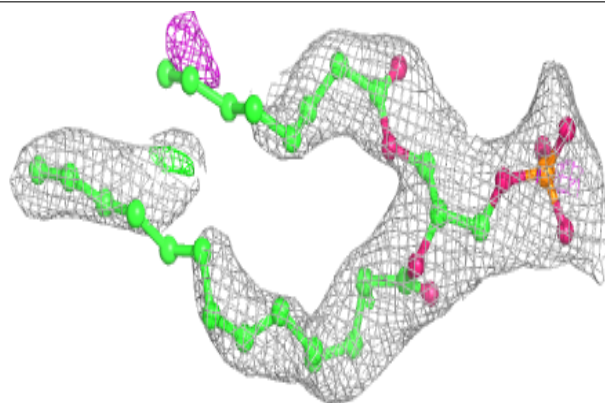
The following is a graphical depiction of the model fit to experimental electron density of all instances of the Ligand of Interest. In addition, ligands with molecular weight > 250 and outliers as shown on the geometry validation Tables will also be included. Each fit is shown from different orientation to approximate a three-dimensional view.

Electron density around PX4 A 1302:

$2mF_o-DF_c$ (at 0.7 rmsd) in gray
 mF_o-DF_c (at 3 rmsd) in purple (negative)
and green (positive)

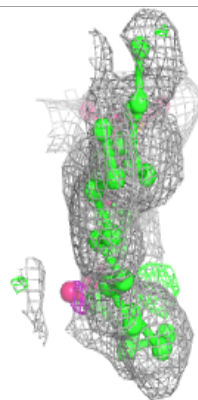
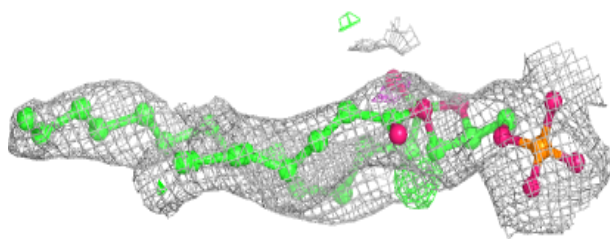
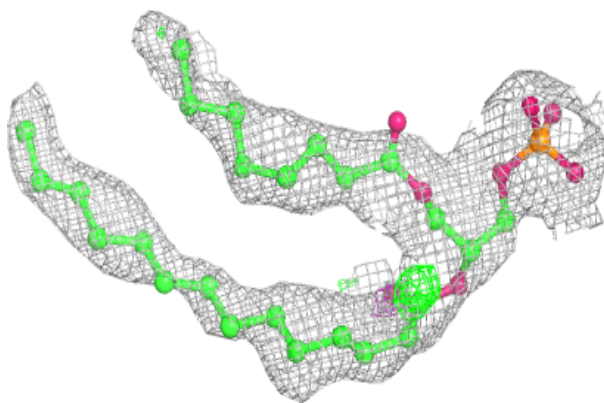
**Electron density around PX4 A 1304:**

$2mF_o-DF_c$ (at 0.7 rmsd) in gray
 mF_o-DF_c (at 3 rmsd) in purple (negative)
and green (positive)

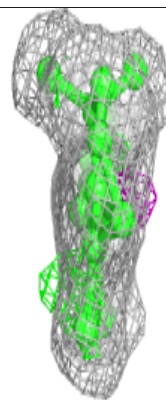
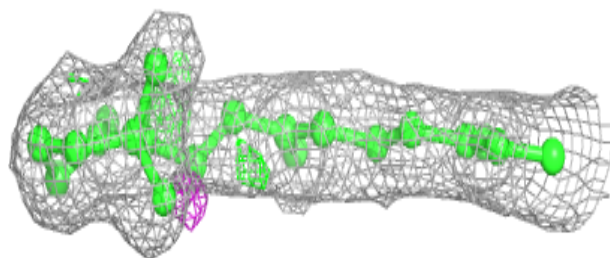
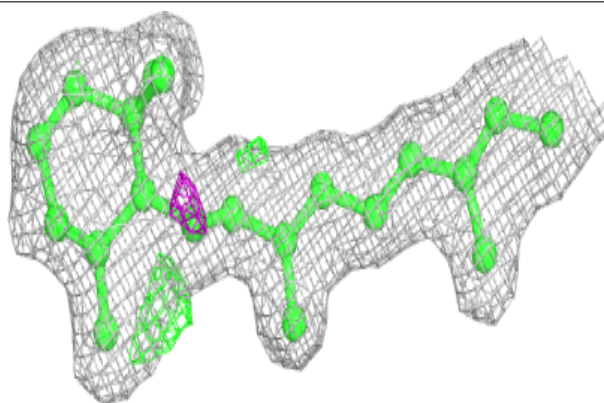


Electron density around PX4 A 1303:

$2mF_o-DF_c$ (at 0.7 rmsd) in gray
 mF_o-DF_c (at 3 rmsd) in purple (negative)
and green (positive)

**Electron density around RET A 1301:**

$2mF_o-DF_c$ (at 0.7 rmsd) in gray
 mF_o-DF_c (at 3 rmsd) in purple (negative)
and green (positive)



6.5 Other polymers [i](#)

There are no such residues in this entry.