



Full wwPDB X-ray Structure Validation Report ⓘ

Jun 24, 2025 – 04:27 pm BST

PDB ID : 5N53 / pdb_00005n53
Title : Crystal structure of human 3-phosphoglycerate dehydrogenase in complex with N-(3-chloro-4-methoxyphenyl) acetamide
Authors : Unterlass, J.E.; Basle, A.; Blackburn, T.J.; Tucker, J.; Cano, C.; Noble, M.E.M.; Curtin, N.J.
Deposited on : 2017-02-12
Resolution : 1.48 Å(reported)

This is a Full wwPDB X-ray Structure Validation Report for a publicly released PDB entry.

We welcome your comments at validation@mail.wwpdb.org

A user guide is available at

<https://www.wwpdb.org/validation/2017/XrayValidationReportHelp>

with specific help available everywhere you see the ⓘ symbol.

The types of validation reports are described at

<http://www.wwpdb.org/validation/2017/FAQs#types>.

The following versions of software and data (see [references ⓘ](#)) were used in the production of this report:

MolProbity : 4-5-2 with Phenix2.0rc1
Mogul : 1.8.4, CSD as541be (2020)
Xtriage (Phenix) : 2.0rc1
EDS : 3.0
Percentile statistics : 20231227.v01 (using entries in the PDB archive December 27th 2023)
CCP4 : 9.0.003 (Gargrove)
Density-Fitness : 1.0.11
Ideal geometry (proteins) : Engh & Huber (2001)
Ideal geometry (DNA, RNA) : Parkinson et al. (1996)
Validation Pipeline (wwPDB-VP) : 2.44

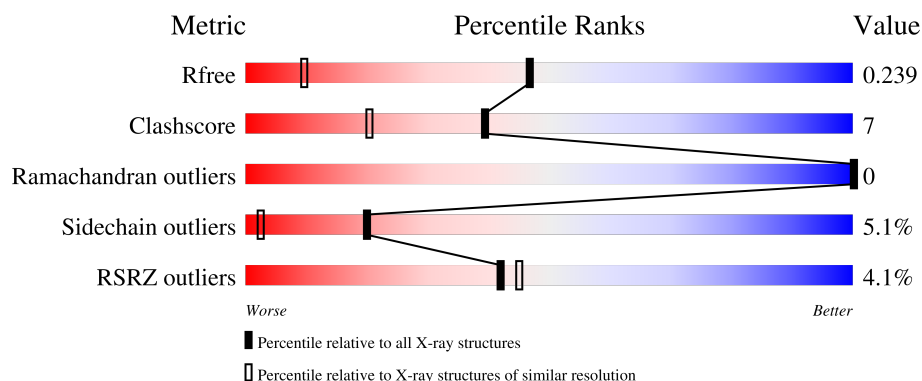
1 Overall quality at a glance

The following experimental techniques were used to determine the structure:

X-RAY DIFFRACTION

The reported resolution of this entry is 1.48 Å.

Percentile scores (ranging between 0-100) for global validation metrics of the entry are shown in the following graphic. The table shows the number of entries on which the scores are based.



Metric	Whole archive (#Entries)	Similar resolution (#Entries, resolution range(Å))
R_{free}	164625	6131 (1.50-1.46)
Clashscore	180529	6623 (1.50-1.46)
Ramachandran outliers	177936	6521 (1.50-1.46)
Sidechain outliers	177891	6518 (1.50-1.46)
RSRZ outliers	164620	6132 (1.50-1.46)

The table below summarises the geometric issues observed across the polymeric chains and their fit to the electron density. The red, orange, yellow and green segments of the lower bar indicate the fraction of residues that contain outliers for ≥ 3 , 2, 1 and 0 types of geometric quality criteria respectively. A grey segment represents the fraction of residues that are not modelled. The numeric value for each fraction is indicated below the corresponding segment, with a dot representing fractions $\leq 5\%$. The upper red bar (where present) indicates the fraction of residues that have poor fit to the electron density. The numeric value is given above the bar.

Mol	Chain	Length	Quality of chain
1	A	195	<div> <div>4%</div> <div>86%</div> <div>13%</div> <div>.</div> </div>
1	B	195	<div> <div>4%</div> <div>85%</div> <div>13%</div> <div>..</div> </div>

2 Entry composition [i](#)

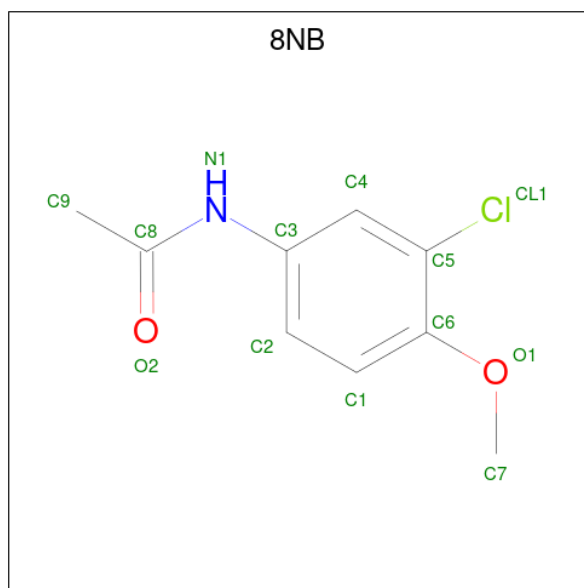
There are 3 unique types of molecules in this entry. The entry contains 3345 atoms, of which 0 are hydrogens and 0 are deuteriums.

In the tables below, the ZeroOcc column contains the number of atoms modelled with zero occupancy, the AltConf column contains the number of residues with at least one atom in alternate conformation and the Trace column contains the number of residues modelled with at most 2 atoms.

- Molecule 1 is a protein called D-3-phosphoglycerate dehydrogenase.

Mol	Chain	Residues	Atoms					ZeroOcc	AltConf	Trace
1	B	195	Total	C	N	O	S	0	9	0
			1535	956	272	292	15			
1	A	195	Total	C	N	O	S	0	10	0
			1546	962	277	292	15			

- Molecule 2 is {N}-(3-chloranyl-4-methoxy-phenyl)ethanamide (CCD ID: 8NB) (formula: $C_9H_{10}ClNO_2$).



Mol	Chain	Residues	Atoms					ZeroOcc	AltConf
2	B	1	Total	C	Cl	N	O	0	0
			13	9	1	1	2		
2	A	1	Total	C	Cl	N	O	0	0
			13	9	1	1	2		

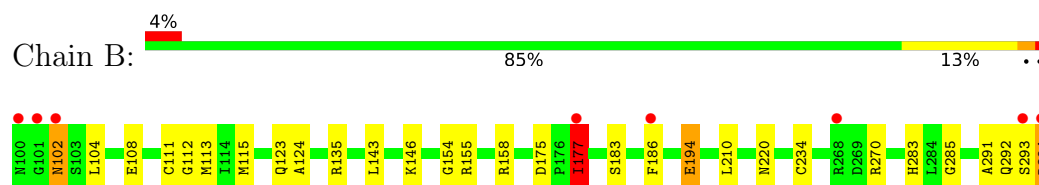
- Molecule 3 is water.

Mol	Chain	Residues	Atoms		ZeroOcc	AltConf
3	B	128	Total 128	O 128	0	0
3	A	110	Total 110	O 110	0	0

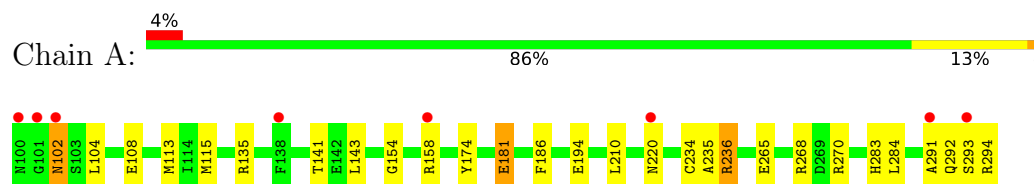
3 Residue-property plots [i](#)

These plots are drawn for all protein, RNA, DNA and oligosaccharide chains in the entry. The first graphic for a chain summarises the proportions of the various outlier classes displayed in the second graphic. The second graphic shows the sequence view annotated by issues in geometry and electron density. Residues are color-coded according to the number of geometric quality criteria for which they contain at least one outlier: green = 0, yellow = 1, orange = 2 and red = 3 or more. A red dot above a residue indicates a poor fit to the electron density ($RSRZ > 2$). Stretches of 2 or more consecutive residues without any outlier are shown as a green connector. Residues present in the sample, but not in the model, are shown in grey.

- Molecule 1: D-3-phosphoglycerate dehydrogenase



- Molecule 1: D-3-phosphoglycerate dehydrogenase



4 Data and refinement statistics

Property	Value	Source
Space group	P 1	Depositor
Cell constants a, b, c, α , β , γ	43.35Å 45.32Å 55.26Å 97.90° 110.06° 106.35°	Depositor
Resolution (Å)	50.12 – 1.48 50.12 – 1.48	Depositor EDS
% Data completeness (in resolution range)	84.6 (50.12-1.48) 84.6 (50.12-1.48)	Depositor EDS
R_{merge}	0.11	Depositor
R_{sym}	(Not available)	Depositor
$\langle I/\sigma(I) \rangle$ ¹	1.53 (at 1.48Å)	Xtriage
Refinement program	REFMAC 5.8.0135	Depositor
R, R_{free}	0.189 , 0.243 0.189 , 0.239	Depositor DCC
R_{free} test set	3123 reflections (5.17%)	wwPDB-VP
Wilson B-factor (Å ²)	10.3	Xtriage
Anisotropy	0.490	Xtriage
Bulk solvent k_{sol} (e/Å ³), B_{sol} (Å ²)	0.39 , 43.9	EDS
L-test for twinning ²	$\langle L \rangle = 0.48$, $\langle L^2 \rangle = 0.31$	Xtriage
Estimated twinning fraction	No twinning to report.	Xtriage
F_o, F_c correlation	0.96	EDS
Total number of atoms	3345	wwPDB-VP
Average B, all atoms (Å ²)	20.0	wwPDB-VP

Xtriage's analysis on translational NCS is as follows: *The largest off-origin peak in the Patterson function is 9.75% of the height of the origin peak. No significant pseudotranslation is detected.*

¹Intensities estimated from amplitudes.

²Theoretical values of $\langle |L| \rangle$, $\langle L^2 \rangle$ for acentric reflections are 0.5, 0.333 respectively for untwinned datasets, and 0.375, 0.2 for perfectly twinned datasets.

5 Model quality

5.1 Standard geometry

Bond lengths and bond angles in the following residue types are not validated in this section: 8NB

The Z score for a bond length (or angle) is the number of standard deviations the observed value is removed from the expected value. A bond length (or angle) with $|Z| > 5$ is considered an outlier worth inspection. RMSZ is the root-mean-square of all Z scores of the bond lengths (or angles).

Mol	Chain	Bond lengths		Bond angles	
		RMSZ	$\# Z > 5$	RMSZ	$\# Z > 5$
1	A	1.24	3/1569 (0.2%)	1.20	3/2116 (0.1%)
1	B	1.21	3/1558 (0.2%)	1.18	5/2102 (0.2%)
All	All	1.22	6/3127 (0.2%)	1.19	8/4218 (0.2%)

All (6) bond length outliers are listed below:

Mol	Chain	Res	Type	Atoms	Z	Observed(Å)	Ideal(Å)
1	A	235	ALA	CA-C	7.57	1.58	1.52
1	B	124	ALA	N-CA	6.88	1.54	1.46
1	B	210	LEU	N-CA	6.65	1.50	1.46
1	A	210	LEU	N-CA	6.47	1.50	1.46
1	A	210	LEU	C-O	-5.29	1.19	1.24
1	B	112	GLY	N-CA	5.14	1.52	1.45

All (8) bond angle outliers are listed below:

Mol	Chain	Res	Type	Atoms	Z	Observed(°)	Ideal(°)
1	B	220	ASN	N-CA-C	7.53	119.49	111.28
1	A	236	ARG	CG-CD-NE	6.05	125.32	112.00
1	B	177	ILE	CB-CA-C	5.76	116.83	111.30
1	A	236	ARG	CD-NE-CZ	5.63	132.28	124.40
1	A	284	LEU	N-CA-C	5.20	119.61	113.16
1	B	123	GLN	N-CA-C	-5.10	105.80	111.36
1	B	155	ARG	N-CA-CB	5.08	117.59	110.12
1	B	285	GLY	N-CA-C	5.08	119.03	112.83

There are no chirality outliers.

There are no planarity outliers.

5.2 Too-close contacts ⓘ

In the following table, the Non-H and H(model) columns list the number of non-hydrogen atoms and hydrogen atoms in the chain respectively. The H(added) column lists the number of hydrogen atoms added and optimized by MolProbity. The Clashes column lists the number of clashes within the asymmetric unit, whereas Symm-Clashes lists symmetry-related clashes.

Mol	Chain	Non-H	H(model)	H(added)	Clashes	Symm-Clashes
1	A	1546	0	1562	27	5
1	B	1535	0	1547	27	1
2	A	13	0	0	0	0
2	B	13	0	0	0	0
3	A	110	0	0	2	0
3	B	128	0	0	3	4
All	All	3345	0	3109	41	5

The all-atom clashscore is defined as the number of clashes found per 1000 atoms (including hydrogen atoms). The all-atom clashscore for this structure is 7.

All (41) close contacts within the same asymmetric unit are listed below, sorted by their clash magnitude.

Atom-1	Atom-2	Interatomic distance (Å)	Clash overlap (Å)
1:B:115[A]:MET:HE1	1:A:115[A]:MET:CE	1.16	1.62
1:B:115[A]:MET:CE	1:A:115[A]:MET:HE1	1.14	1.59
1:B:115[A]:MET:SD	1:A:115[A]:MET:CE	2.19	1.30
1:B:115[A]:MET:CE	1:A:115[A]:MET:CE	1.82	1.27
1:B:115[A]:MET:CE	1:A:115[A]:MET:SD	2.25	1.25
1:B:115[A]:MET:HE1	1:A:115[A]:MET:SD	1.95	1.01
1:B:115[A]:MET:SD	1:A:115[A]:MET:HE3	1.99	1.00
1:B:115[A]:MET:SD	1:A:115[A]:MET:HE1	1.91	1.00
1:B:115[A]:MET:HE3	1:A:115[A]:MET:SD	2.08	0.91
1:B:115[A]:MET:SD	1:A:115[A]:MET:SD	2.77	0.80
1:A:113[B]:MET:SD	1:A:234:CYS:SG	2.80	0.80
1:B:113[B]:MET:SD	1:B:234:CYS:SG	2.81	0.78
1:B:102:ASN:HB2	3:B:495:HOH:O	1.84	0.76
1:B:158:ARG:HG2	1:B:186:PHE:CZ	2.20	0.74
1:B:135:ARG:NH1	1:A:283:HIS:O	2.25	0.69
1:B:154:GLY:O	1:B:158:ARG:HG3	1.96	0.66
1:A:154:GLY:O	1:A:158[A]:ARG:HG3	1.99	0.61
1:A:220[A]:ASN:OD1	1:A:220[A]:ASN:O	2.20	0.59
1:A:115[B]:MET:SD	1:A:143:LEU:HD11	2.43	0.59
1:B:283:HIS:O	1:A:135:ARG:NH1	2.37	0.57
1:B:111:CYS:O	1:B:115[B]:MET:HG2	2.04	0.56

Continued on next page...

Continued from previous page...

Atom-1	Atom-2	Interatomic distance (Å)	Clash overlap (Å)
1:A:141:THR:HB	3:A:415:HOH:O	2.05	0.55
1:B:183:SER:HA	1:B:186:PHE:CZ	2.42	0.55
1:B:115[B]:MET:HE3	1:B:115[B]:MET:HA	1.88	0.54
1:A:181[A]:GLU:H	1:A:181[A]:GLU:CD	2.13	0.54
1:B:294:ARG:NH1	3:B:406:HOH:O	2.43	0.52
1:A:115[B]:MET:HE3	1:A:115[B]:MET:HA	1.90	0.52
1:B:115[B]:MET:SD	1:B:143:LEU:HD11	2.50	0.50
1:B:115[A]:MET:HE1	1:A:115[A]:MET:HE1	0.71	0.50
1:A:283:HIS:HE1	3:A:468:HOH:O	1.96	0.48
1:B:102:ASN:ND2	1:B:291:ALA:HB1	2.29	0.48
1:B:175:ASP:OD1	1:B:177:ILE:HG22	2.15	0.47
1:A:158[A]:ARG:HG2	1:A:186:PHE:CZ	2.50	0.47
1:A:265:GLU:OE1	1:A:283:HIS:HD2	1.99	0.46
1:B:146[A]:LYS:NZ	3:B:412:HOH:O	2.50	0.45
1:A:115[B]:MET:SD	1:A:143:LEU:CD1	3.04	0.45
1:A:102:ASN:ND2	1:A:291:ALA:HB1	2.31	0.45
1:B:158:ARG:HG2	1:B:186:PHE:CE1	2.52	0.44
1:A:220[A]:ASN:OD1	1:A:220[A]:ASN:C	2.59	0.43
1:A:104:LEU:O	1:A:108:GLU:HG3	2.20	0.42
1:B:104:LEU:O	1:B:108:GLU:HG3	2.21	0.41

All (5) symmetry-related close contacts are listed below. The label for Atom-2 includes the symmetry operator and encoded unit-cell translations to be applied.

Atom-1	Atom-2	Interatomic distance (Å)	Clash overlap (Å)
1:A:220[B]:ASN:ND2	3:B:518:HOH:O[1_444]	1.08	1.12
1:A:220[B]:ASN:OD1	3:B:520:HOH:O[1_444]	1.26	0.94
1:A:220[B]:ASN:CG	3:B:518:HOH:O[1_444]	1.62	0.58
1:A:220[B]:ASN:OD1	3:B:518:HOH:O[1_444]	1.95	0.25
1:B:194:GLU:OE1	1:A:174:TYR:OH[1_666]	2.03	0.17

5.3 Torsion angles ⓘ

5.3.1 Protein backbone ⓘ

In the following table, the Percentiles column shows the percent Ramachandran outliers of the chain as a percentile score with respect to all X-ray entries followed by that with respect to entries of similar resolution.

The Analysed column shows the number of residues for which the backbone conformation was

analysed, and the total number of residues.

Mol	Chain	Analysed	Favoured	Allowed	Outliers	Percentiles	
1	A	203/195 (104%)	198 (98%)	5 (2%)	0	100	100
1	B	202/195 (104%)	199 (98%)	3 (2%)	0	100	100
All	All	405/390 (104%)	397 (98%)	8 (2%)	0	100	100

There are no Ramachandran outliers to report.

5.3.2 Protein sidechains ⓘ

In the following table, the Percentiles column shows the percent sidechain outliers of the chain as a percentile score with respect to all X-ray entries followed by that with respect to entries of similar resolution.

The Analysed column shows the number of residues for which the sidechain conformation was analysed, and the total number of residues.

Mol	Chain	Analysed	Rotameric	Outliers	Percentiles	
1	A	168/158 (106%)	158 (94%)	10 (6%)	16	1
1	B	167/158 (106%)	160 (96%)	7 (4%)	25	4
All	All	335/316 (106%)	318 (95%)	17 (5%)	20	2

All (17) residues with a non-rotameric sidechain are listed below:

Mol	Chain	Res	Type
1	B	102	ASN
1	B	177	ILE
1	B	194	GLU
1	B	270	ARG
1	B	292	GLN
1	B	293	SER
1	B	294	ARG
1	A	102	ASN
1	A	181[A]	GLU
1	A	181[B]	GLU
1	A	194	GLU
1	A	236	ARG
1	A	268	ARG
1	A	270	ARG
1	A	292	GLN
1	A	293	SER

Continued on next page...

Continued from previous page...

Mol	Chain	Res	Type
1	A	294	ARG

Sometimes sidechains can be flipped to improve hydrogen bonding and reduce clashes. All (9) such sidechains are listed below:

Mol	Chain	Res	Type
1	B	102	ASN
1	B	189	GLN
1	B	190	GLN
1	B	283	HIS
1	A	100	ASN
1	A	102	ASN
1	A	189	GLN
1	A	190	GLN
1	A	283	HIS

5.3.3 RNA [i](#)

There are no RNA molecules in this entry.

5.4 Non-standard residues in protein, DNA, RNA chains [i](#)

There are no non-standard protein/DNA/RNA residues in this entry.

5.5 Carbohydrates [i](#)

There are no oligosaccharides in this entry.

5.6 Ligand geometry [i](#)

2 ligands are modelled in this entry.

In the following table, the Counts columns list the number of bonds (or angles) for which Mogul statistics could be retrieved, the number of bonds (or angles) that are observed in the model and the number of bonds (or angles) that are defined in the Chemical Component Dictionary. The Link column lists molecule types, if any, to which the group is linked. The Z score for a bond length (or angle) is the number of standard deviations the observed value is removed from the expected value. A bond length (or angle) with $|Z| > 2$ is considered an outlier worth inspection. RMSZ is the root-mean-square of all Z scores of the bond lengths (or angles).

Mol	Type	Chain	Res	Link	Bond lengths			Bond angles		
					Counts	RMSZ	# Z > 2	Counts	RMSZ	# Z > 2
2	8NB	B	301	-	13,13,13	0.38	0	17,17,17	0.79	0
2	8NB	A	301	-	13,13,13	0.39	0	17,17,17	0.86	0

In the following table, the Chirals column lists the number of chiral outliers, the number of chiral centers analysed, the number of these observed in the model and the number defined in the Chemical Component Dictionary. Similar counts are reported in the Torsion and Rings columns. '-' means no outliers of that kind were identified.

Mol	Type	Chain	Res	Link	Chirals	Torsions	Rings
2	8NB	B	301	-	-	2/6/6/6	0/1/1/1
2	8NB	A	301	-	-	0/6/6/6	0/1/1/1

There are no bond length outliers.

There are no bond angle outliers.

There are no chirality outliers.

All (2) torsion outliers are listed below:

Mol	Chain	Res	Type	Atoms
2	B	301	8NB	C5-C6-O1-C7
2	B	301	8NB	C1-C6-O1-C7

There are no ring outliers.

No monomer is involved in short contacts.

5.7 Other polymers [i](#)

There are no such residues in this entry.

5.8 Polymer linkage issues [i](#)

There are no chain breaks in this entry.

6 Fit of model and data [i](#)

6.1 Protein, DNA and RNA chains [i](#)

In the following table, the column labelled ‘#RSRZ > 2’ contains the number (and percentage) of RSRZ outliers, followed by percent RSRZ outliers for the chain as percentile scores relative to all X-ray entries and entries of similar resolution. The OWAB column contains the minimum, median, 95th percentile and maximum values of the occupancy-weighted average B-factor per residue. The column labelled ‘Q < 0.9’ lists the number of (and percentage) of residues with an average occupancy less than 0.9.

Mol	Chain	Analysed	<RSRZ>	#RSRZ > 2			OWAB(Å ²)	Q < 0.9
1	A	195/195 (100%)	0.16	8 (4%)	42	45	5, 16, 40, 81	10 (5%)
1	B	195/195 (100%)	0.09	8 (4%)	42	45	5, 17, 36, 58	9 (4%)
All	All	390/390 (100%)	0.12	16 (4%)	42	45	5, 17, 40, 81	19 (4%)

All (16) RSRZ outliers are listed below:

Mol	Chain	Res	Type	RSRZ
1	A	101	GLY	5.1
1	A	100	ASN	4.0
1	A	102	ASN	4.0
1	B	100	ASN	3.6
1	A	291	ALA	3.1
1	B	177	ILE	3.1
1	A	293	SER	2.9
1	B	101	GLY	2.8
1	B	294	ARG	2.8
1	A	138	PHE	2.7
1	B	268	ARG	2.1
1	A	220[A]	ASN	2.1
1	B	186	PHE	2.1
1	A	158[A]	ARG	2.1
1	B	293	SER	2.1
1	B	102	ASN	2.0

6.2 Non-standard residues in protein, DNA, RNA chains [i](#)

There are no non-standard protein/DNA/RNA residues in this entry.

6.3 Carbohydrates [i](#)

There are no oligosaccharides in this entry.

6.4 Ligands [i](#)

In the following table, the Atoms column lists the number of modelled atoms in the group and the number defined in the chemical component dictionary. The B-factors column lists the minimum, median, 95th percentile and maximum values of B factors of atoms in the group. The column labelled 'Q< 0.9' lists the number of atoms with occupancy less than 0.9.

Mol	Type	Chain	Res	Atoms	RSCC	RSR	B-factors(\AA^2)	Q<0.9
2	8NB	B	301	13/13	0.82	0.17	37,44,56,67	0
2	8NB	A	301	13/13	0.94	0.10	15,19,33,38	0

6.5 Other polymers [i](#)

There are no such residues in this entry.