



Full wwPDB X-ray Structure Validation Report ⓘ

Jun 19, 2024 – 07:21 AM EDT

PDB ID : 4LXL
Title : Crystal structure of JMJD2B complexed with pyridine-2,4-dicarboxylic acid and H3K9me3
Authors : Wang, W.-C.; Chu, C.-H.; Chen, C.-C.
Deposited on : 2013-07-30
Resolution : 1.87 Å(reported)

This is a Full wwPDB X-ray Structure Validation Report for a publicly released PDB entry.

We welcome your comments at validation@mail.wwpdb.org

A user guide is available at

<https://www.wwpdb.org/validation/2017/XrayValidationReportHelp>

with specific help available everywhere you see the ⓘ symbol.

The types of validation reports are described at

<http://www.wwpdb.org/validation/2017/FAQs#types>.

The following versions of software and data (see [references ⓘ](#)) were used in the production of this report:

MolProbity	:	4.02b-467
Mogul	:	2022.3.0, CSD as543be (2022)
Xtriage (Phenix)	:	1.20.1
EDS	:	2.37.1
Percentile statistics	:	20191225.v01 (using entries in the PDB archive December 25th 2019)
Refmac	:	5.8.0158
CCP4	:	7.0.044 (Gargrove)
Ideal geometry (proteins)	:	Engh & Huber (2001)
Ideal geometry (DNA, RNA)	:	Parkinson et al. (1996)
Validation Pipeline (wwPDB-VP)	:	2.37.1

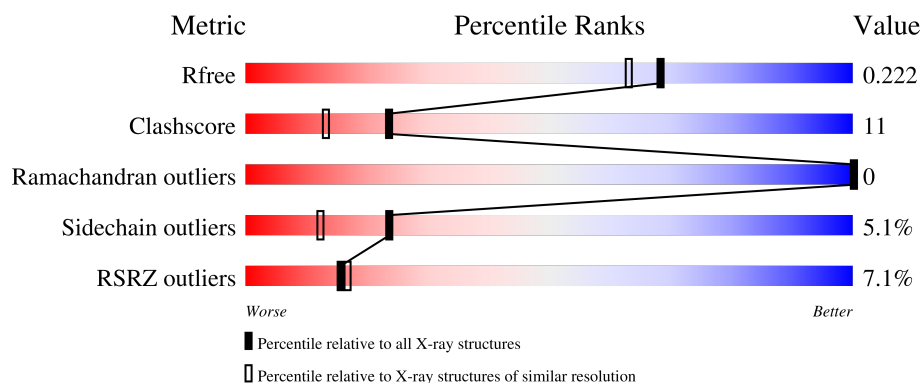
1 Overall quality at a glance

The following experimental techniques were used to determine the structure:

X-RAY DIFFRACTION

The reported resolution of this entry is 1.87 Å.

Percentile scores (ranging between 0-100) for global validation metrics of the entry are shown in the following graphic. The table shows the number of entries on which the scores are based.



Metric	Whole archive (#Entries)	Similar resolution (#Entries, resolution range(Å))
R_{free}	130704	9470 (1.90-1.86)
Clashscore	141614	10282 (1.90-1.86)
Ramachandran outliers	138981	10152 (1.90-1.86)
Sidechain outliers	138945	10152 (1.90-1.86)
RSRZ outliers	127900	9303 (1.90-1.86)

The table below summarises the geometric issues observed across the polymeric chains and their fit to the electron density. The red, orange, yellow and green segments of the lower bar indicate the fraction of residues that contain outliers for ≥ 3 , 2, 1 and 0 types of geometric quality criteria respectively. A grey segment represents the fraction of residues that are not modelled. The numeric value for each fraction is indicated below the corresponding segment, with a dot representing fractions $\leq 5\%$. The upper red bar (where present) indicates the fraction of residues that have poor fit to the electron density. The numeric value is given above the bar.

Mol	Chain	Length	Quality of chain
1	A	368	<div> <div>7%</div> <div> <div></div> <div>72%</div> <div>16%</div> <div>•</div> <div>11%</div> </div> </div>
2	D	8	<div> <div></div> <div> <div>75%</div> <div>25%</div> </div> </div>

2 Entry composition

There are 6 unique types of molecules in this entry. The entry contains 3025 atoms, of which 0 are hydrogens and 0 are deuteriums.

In the tables below, the ZeroOcc column contains the number of atoms modelled with zero occupancy, the AltConf column contains the number of residues with at least one atom in alternate conformation and the Trace column contains the number of residues modelled with at most 2 atoms.

- Molecule 1 is a protein called Lysine-specific demethylase 4B.

Mol	Chain	Residues	Atoms					ZeroOcc	AltConf	Trace
1	A	329	Total	C	N	O	S	0	0	0
			2691	1735	452	487	17			

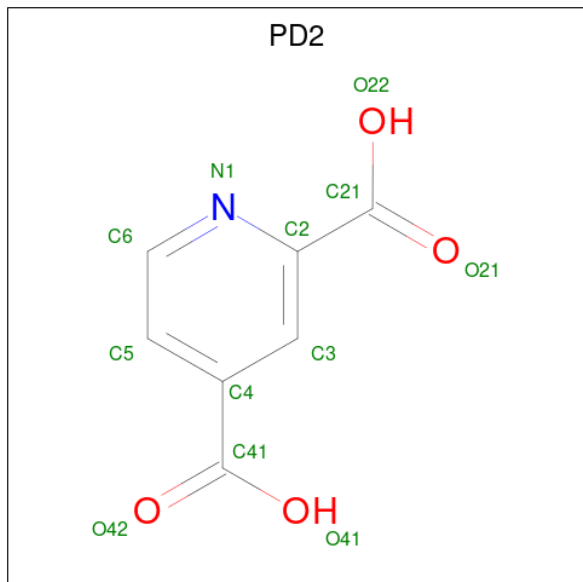
There are 20 discrepancies between the modelled and reference sequences:

Chain	Residue	Modelled	Actual	Comment	Reference
A	-19	MET	-	expression tag	UNP O94953
A	-18	GLY	-	expression tag	UNP O94953
A	-17	SER	-	expression tag	UNP O94953
A	-16	SER	-	expression tag	UNP O94953
A	-15	HIS	-	expression tag	UNP O94953
A	-14	HIS	-	expression tag	UNP O94953
A	-13	HIS	-	expression tag	UNP O94953
A	-12	HIS	-	expression tag	UNP O94953
A	-11	HIS	-	expression tag	UNP O94953
A	-10	HIS	-	expression tag	UNP O94953
A	-9	SER	-	expression tag	UNP O94953
A	-8	SER	-	expression tag	UNP O94953
A	-7	GLY	-	expression tag	UNP O94953
A	-6	LEU	-	expression tag	UNP O94953
A	-5	VAL	-	expression tag	UNP O94953
A	-4	PRO	-	expression tag	UNP O94953
A	-3	ARG	-	expression tag	UNP O94953
A	-2	GLY	-	expression tag	UNP O94953
A	-1	SER	-	expression tag	UNP O94953
A	0	HIS	-	expression tag	UNP O94953

- Molecule 2 is a protein called H3 peptide.

Mol	Chain	Residues	Atoms				ZeroOcc	AltConf	Trace
2	D	8	Total	C	N	O	0	0	0
			58	35	13	10			

- Molecule 3 is PYRIDINE-2,4-DICARBOXYLIC ACID (three-letter code: PD2) (formula: $C_7H_5NO_4$).



Mol	Chain	Residues	Atoms				ZeroOcc	AltConf
3	A	1	Total	C	N	O	0	0
			12	7	1	4		

- Molecule 4 is NICKEL (II) ION (three-letter code: NI) (formula: Ni).

Mol	Chain	Residues	Atoms		ZeroOcc	AltConf
4	A	1	Total	Ni	0	0
			1	1		

- Molecule 5 is ZINC ION (three-letter code: ZN) (formula: Zn).

Mol	Chain	Residues	Atoms		ZeroOcc	AltConf
5	A	1	Total	Zn	0	0
			1	1		

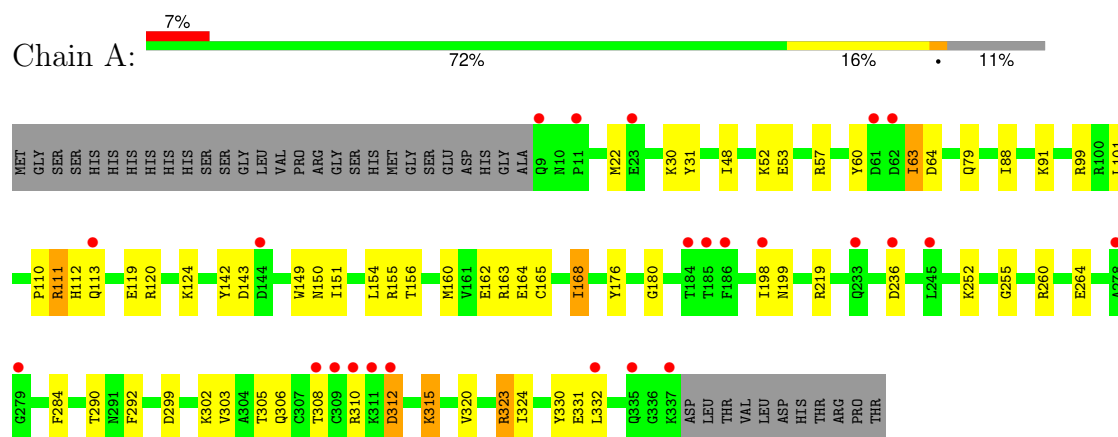
- Molecule 6 is water.

Mol	Chain	Residues	Atoms		ZeroOcc	AltConf
6	A	252	Total	O	0	0
			252	252		
6	D	10	Total	O	0	0
			10	10		

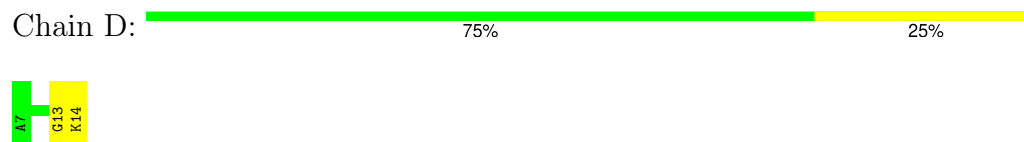
3 Residue-property plots [i](#)

These plots are drawn for all protein, RNA, DNA and oligosaccharide chains in the entry. The first graphic for a chain summarises the proportions of the various outlier classes displayed in the second graphic. The second graphic shows the sequence view annotated by issues in geometry and electron density. Residues are color-coded according to the number of geometric quality criteria for which they contain at least one outlier: green = 0, yellow = 1, orange = 2 and red = 3 or more. A red dot above a residue indicates a poor fit to the electron density ($RSRZ > 2$). Stretches of 2 or more consecutive residues without any outlier are shown as a green connector. Residues present in the sample, but not in the model, are shown in grey.

- Molecule 1: Lysine-specific demethylase 4B



- Molecule 2: H3 peptide



4 Data and refinement statistics

Property	Value	Source
Space group	P 21 21 21	Depositor
Cell constants a, b, c, α , β , γ	54.36Å 78.47Å 83.89Å 90.00° 90.00° 90.00°	Depositor
Resolution (Å)	28.67 – 1.87 28.65 – 1.87	Depositor EDS
% Data completeness (in resolution range)	(Not available) (28.67-1.87) 99.4 (28.65-1.87)	Depositor EDS
R_{merge}	0.04	Depositor
R_{sym}	(Not available)	Depositor
$\langle I/\sigma(I) \rangle$ ¹	4.68 (at 1.87Å)	Xtriage
Refinement program	REFMAC 5.7.0032	Depositor
R, R_{free}	0.176 , 0.222 0.176 , 0.222	Depositor DCC
R_{free} test set	1529 reflections (5.07%)	wwPDB-VP
Wilson B-factor (Å ²)	22.1	Xtriage
Anisotropy	0.488	Xtriage
Bulk solvent k_{sol} (e/Å ³), B_{sol} (Å ²)	0.39 , 51.2	EDS
L-test for twinning ²	$\langle L \rangle = 0.50$, $\langle L^2 \rangle = 0.33$	Xtriage
Estimated twinning fraction	No twinning to report.	Xtriage
F_o, F_c correlation	0.96	EDS
Total number of atoms	3025	wwPDB-VP
Average B, all atoms (Å ²)	26.0	wwPDB-VP

Xtriage's analysis on translational NCS is as follows: *The largest off-origin peak in the Patterson function is 5.88% of the height of the origin peak. No significant pseudotranslation is detected.*

¹Intensities estimated from amplitudes.

²Theoretical values of $\langle |L| \rangle$, $\langle L^2 \rangle$ for acentric reflections are 0.5, 0.333 respectively for untwinned datasets, and 0.375, 0.2 for perfectly twinned datasets.

5 Model quality

5.1 Standard geometry

Bond lengths and bond angles in the following residue types are not validated in this section: ZN, NI, M3L, PD2

The Z score for a bond length (or angle) is the number of standard deviations the observed value is removed from the expected value. A bond length (or angle) with $|Z| > 5$ is considered an outlier worth inspection. RMSZ is the root-mean-square of all Z scores of the bond lengths (or angles).

Mol	Chain	Bond lengths		Bond angles	
		RMSZ	# Z >5	RMSZ	# Z >5
1	A	0.66	0/2770	0.68	0/3751
2	D	0.74	0/45	0.68	0/57
All	All	0.66	0/2815	0.68	0/3808

There are no bond length outliers.

There are no bond angle outliers.

There are no chirality outliers.

There are no planarity outliers.

5.2 Too-close contacts

In the following table, the Non-H and H(model) columns list the number of non-hydrogen atoms and hydrogen atoms in the chain respectively. The H(added) column lists the number of hydrogen atoms added and optimized by MolProbity. The Clashes column lists the number of clashes within the asymmetric unit, whereas Symm-Clashes lists symmetry-related clashes.

Mol	Chain	Non-H	H(model)	H(added)	Clashes	Symm-Clashes
1	A	2691	0	2615	59	0
2	D	58	0	67	2	0
3	A	12	0	3	0	0
4	A	1	0	0	0	0
5	A	1	0	0	0	0
6	A	252	0	0	13	0
6	D	10	0	0	1	0
All	All	3025	0	2685	61	0

The all-atom clashscore is defined as the number of clashes found per 1000 atoms (including hydrogen atoms). The all-atom clashscore for this structure is 11.

All (61) close contacts within the same asymmetric unit are listed below, sorted by their clash magnitude.

Atom-1	Atom-2	Interatomic distance (Å)	Clash overlap (Å)
1:A:111:ARG:HG3	1:A:111:ARG:HH11	0.96	1.09
1:A:310:ARG:HH12	1:A:312:ASP:HB2	1.22	0.99
1:A:48:ILE:HD12	1:A:149:TRP:HH2	1.30	0.96
1:A:111:ARG:HG3	1:A:111:ARG:NH1	1.78	0.94
1:A:111:ARG:HH11	1:A:111:ARG:CG	1.80	0.88
1:A:310:ARG:NH1	1:A:312:ASP:HB2	1.90	0.86
1:A:323:ARG:HG3	1:A:330:TYR:CZ	2.11	0.84
1:A:48:ILE:HD12	1:A:149:TRP:CH2	2.17	0.79
1:A:260:ARG:HB2	6:A:653:HOH:O	1.83	0.77
2:D:13:GLY:O	2:D:14:LYS:HB2	1.90	0.71
1:A:110:PRO:O	1:A:112:HIS:HD2	1.75	0.70
1:A:160:MET:O	1:A:164:GLU:HG2	1.97	0.65
1:A:64:ASP:OD1	1:A:99:ARG:NH1	2.29	0.64
1:A:308:THR:C	6:A:734:HOH:O	2.36	0.64
1:A:323:ARG:CG	1:A:330:TYR:CZ	2.81	0.63
1:A:60:TYR:O	1:A:63:ILE:HG13	1.98	0.63
1:A:308:THR:CA	6:A:734:HOH:O	2.48	0.61
1:A:308:THR:HA	6:A:734:HOH:O	2.01	0.60
1:A:219:ARG:NH2	1:A:255:GLY:O	2.34	0.60
2:D:14:LYS:HE3	6:D:107:HOH:O	2.03	0.58
1:A:165:CYS:HB2	6:A:647:HOH:O	2.03	0.57
1:A:306:GLN:OE1	1:A:315:LYS:HG3	2.05	0.57
1:A:331:GLU:CD	6:A:648:HOH:O	2.44	0.55
1:A:252:LYS:HB2	6:A:746:HOH:O	2.08	0.54
1:A:320:VAL:CG2	1:A:324:ILE:HD12	2.37	0.54
1:A:310:ARG:NH1	1:A:310:ARG:HB3	2.22	0.54
1:A:323:ARG:HG3	1:A:330:TYR:CE1	2.43	0.53
1:A:162:GLU:OE2	1:A:168:ILE:HD11	2.10	0.52
1:A:252:LYS:HD3	6:A:746:HOH:O	2.09	0.52
1:A:310:ARG:HH12	1:A:312:ASP:CB	2.10	0.52
1:A:199:ASN:HB3	6:A:508:HOH:O	2.09	0.51
1:A:91:LYS:HG2	6:A:598:HOH:O	2.12	0.50
1:A:120:ARG:HG2	6:A:724:HOH:O	2.11	0.49
1:A:320:VAL:HG23	1:A:324:ILE:HD12	1.94	0.49
1:A:22:MET:HE1	1:A:53:GLU:HB2	1.95	0.49
1:A:162:GLU:HG3	1:A:168:ILE:HD12	1.95	0.48
1:A:236:ASP:OD1	1:A:308:THR:HG23	2.13	0.48
1:A:151:ILE:HG23	1:A:290:THR:HG22	1.95	0.48
1:A:323:ARG:CG	1:A:330:TYR:CE1	2.97	0.47
1:A:22:MET:CE	1:A:53:GLU:HB2	2.45	0.47

Continued on next page...

Continued from previous page...

Atom-1	Atom-2	Interatomic distance (Å)	Clash overlap (Å)
1:A:155:ARG:HA	1:A:155:ARG:HD3	1.75	0.47
1:A:142:TYR:CE2	1:A:150:ASN:HA	2.50	0.46
1:A:57:ARG:HA	1:A:143:ASP:OD2	2.15	0.46
1:A:303:VAL:HG22	1:A:303:VAL:O	2.17	0.45
1:A:30:LYS:HE2	1:A:30:LYS:HB2	1.71	0.45
1:A:299:ASP:HA	1:A:302:LYS:HD3	1.99	0.44
1:A:31:TYR:CE2	1:A:48:ILE:HD13	2.52	0.43
1:A:119:GLU:OE2	1:A:260:ARG:NH1	2.51	0.43
1:A:180:GLY:O	1:A:284:PHE:HA	2.18	0.43
1:A:310:ARG:HB3	1:A:310:ARG:HH11	1.84	0.42
1:A:162:GLU:CD	1:A:168:ILE:HD11	2.40	0.42
1:A:22:MET:HE2	1:A:22:MET:HB2	1.89	0.42
1:A:22:MET:CE	1:A:53:GLU:OE1	2.68	0.42
1:A:111:ARG:NH1	1:A:111:ARG:CG	2.52	0.42
1:A:305:THR:C	1:A:306:GLN:HG2	2.40	0.41
1:A:306:GLN:HB3	6:A:630:HOH:O	2.19	0.41
1:A:320:VAL:HG22	1:A:324:ILE:HD12	2.02	0.41
1:A:156:THR:HG21	1:A:292:PHE:HB2	2.02	0.41
1:A:252:LYS:CD	6:A:746:HOH:O	2.66	0.41
1:A:154:LEU:HD11	1:A:198:ILE:HG21	2.02	0.41
1:A:88:ILE:N	1:A:88:ILE:HD13	2.36	0.40

There are no symmetry-related clashes.

5.3 Torsion angles ⓘ

5.3.1 Protein backbone ⓘ

In the following table, the Percentiles column shows the percent Ramachandran outliers of the chain as a percentile score with respect to all X-ray entries followed by that with respect to entries of similar resolution.

The Analysed column shows the number of residues for which the backbone conformation was analysed, and the total number of residues.

Mol	Chain	Analysed	Favoured	Allowed	Outliers	Percentiles	
1	A	327/368 (89%)	319 (98%)	8 (2%)	0	100	100
2	D	5/8 (62%)	5 (100%)	0	0	100	100
All	All	332/376 (88%)	324 (98%)	8 (2%)	0	100	100

There are no Ramachandran outliers to report.

5.3.2 Protein sidechains ⓘ

In the following table, the Percentiles column shows the percent sidechain outliers of the chain as a percentile score with respect to all X-ray entries followed by that with respect to entries of similar resolution.

The Analysed column shows the number of residues for which the sidechain conformation was analysed, and the total number of residues.

Mol	Chain	Analysed	Rotameric	Outliers	Percentiles	
1	A	288/321 (90%)	273 (95%)	15 (5%)	23	12
2	D	4/4 (100%)	4 (100%)	0	100	100
All	All	292/325 (90%)	277 (95%)	15 (5%)	24	12

All (15) residues with a non-rotameric sidechain are listed below:

Mol	Chain	Res	Type
1	A	52	LYS
1	A	63	ILE
1	A	79	GLN
1	A	101	LEU
1	A	111	ARG
1	A	113	GLN
1	A	124	LYS
1	A	163	ARG
1	A	168	ILE
1	A	176	TYR
1	A	264	GLU
1	A	312	ASP
1	A	315	LYS
1	A	323	ARG
1	A	332	LEU

Sometimes sidechains can be flipped to improve hydrogen bonding and reduce clashes. All (3) such sidechains are listed below:

Mol	Chain	Res	Type
1	A	9	GLN
1	A	79	GLN
1	A	112	HIS

5.3.3 RNA ⓘ

There are no RNA molecules in this entry.

5.4 Non-standard residues in protein, DNA, RNA chains ⓘ

1 non-standard protein/DNA/RNA residue is modelled in this entry.

In the following table, the Counts columns list the number of bonds (or angles) for which Mogul statistics could be retrieved, the number of bonds (or angles) that are observed in the model and the number of bonds (or angles) that are defined in the Chemical Component Dictionary. The Link column lists molecule types, if any, to which the group is linked. The Z score for a bond length (or angle) is the number of standard deviations the observed value is removed from the expected value. A bond length (or angle) with $|Z| > 2$ is considered an outlier worth inspection. RMSZ is the root-mean-square of all Z scores of the bond lengths (or angles).

Mol	Type	Chain	Res	Link	Bond lengths			Bond angles		
					Counts	RMSZ	$\# Z > 2$	Counts	RMSZ	$\# Z > 2$
2	M3L	D	9	2	10,11,12	0.76	0	9,14,16	0.64	0

In the following table, the Chirals column lists the number of chiral outliers, the number of chiral centers analysed, the number of these observed in the model and the number defined in the Chemical Component Dictionary. Similar counts are reported in the Torsion and Rings columns. '-' means no outliers of that kind were identified.

Mol	Type	Chain	Res	Link	Chirals	Torsions	Rings
2	M3L	D	9	2	-	0/9/10/12	-

There are no bond length outliers.

There are no bond angle outliers.

There are no chirality outliers.

There are no torsion outliers.

There are no ring outliers.

No monomer is involved in short contacts.

5.5 Carbohydrates ⓘ

There are no monosaccharides in this entry.

5.6 Ligand geometry

Of 3 ligands modelled in this entry, 2 are monoatomic - leaving 1 for Mogul analysis.

In the following table, the Counts columns list the number of bonds (or angles) for which Mogul statistics could be retrieved, the number of bonds (or angles) that are observed in the model and the number of bonds (or angles) that are defined in the Chemical Component Dictionary. The Link column lists molecule types, if any, to which the group is linked. The Z score for a bond length (or angle) is the number of standard deviations the observed value is removed from the expected value. A bond length (or angle) with $|Z| > 2$ is considered an outlier worth inspection. RMSZ is the root-mean-square of all Z scores of the bond lengths (or angles).

Mol	Type	Chain	Res	Link	Bond lengths			Bond angles		
					Counts	RMSZ	# $ Z > 2$	Counts	RMSZ	# $ Z > 2$
3	PD2	A	401	4	12,12,12	0.99	0	16,16,16	1.53	2 (12%)

In the following table, the Chirals column lists the number of chiral outliers, the number of chiral centers analysed, the number of these observed in the model and the number defined in the Chemical Component Dictionary. Similar counts are reported in the Torsion and Rings columns. '-' means no outliers of that kind were identified.

Mol	Type	Chain	Res	Link	Chirals	Torsions	Rings
3	PD2	A	401	4	-	2/8/8/8	0/1/1/1

There are no bond length outliers.

All (2) bond angle outliers are listed below:

Mol	Chain	Res	Type	Atoms	Z	Observed(°)	Ideal(°)
3	A	401	PD2	C5-C6-N1	-3.78	119.33	123.97
3	A	401	PD2	C6-N1-C2	3.51	121.45	116.93

There are no chirality outliers.

All (2) torsion outliers are listed below:

Mol	Chain	Res	Type	Atoms
3	A	401	PD2	C5-C4-C41-O42
3	A	401	PD2	C3-C4-C41-O42

There are no ring outliers.

No monomer is involved in short contacts.

5.7 Other polymers [i](#)

There are no such residues in this entry.

5.8 Polymer linkage issues [i](#)

There are no chain breaks in this entry.

6 Fit of model and data

6.1 Protein, DNA and RNA chains

In the following table, the column labelled ‘#RSRZ> 2’ contains the number (and percentage) of RSRZ outliers, followed by percent RSRZ outliers for the chain as percentile scores relative to all X-ray entries and entries of similar resolution. The OWAB column contains the minimum, median, 95th percentile and maximum values of the occupancy-weighted average B-factor per residue. The column labelled ‘Q< 0.9’ lists the number of (and percentage) of residues with an average occupancy less than 0.9.

Mol	Chain	Analysed	<RSRZ>	#RSRZ>2	OWAB(Å ²)	Q<0.9
1	A	329/368 (89%)	0.19	24 (7%) 15 16	12, 23, 49, 69	4 (1%)
2	D	7/8 (87%)	0.05	0 100 100	20, 23, 37, 40	0
All	All	336/376 (89%)	0.18	24 (7%) 16 17	12, 23, 49, 69	4 (1%)

All (24) RSRZ outliers are listed below:

Mol	Chain	Res	Type	RSRZ
1	A	311	LYS	4.9
1	A	186	PHE	3.7
1	A	308	THR	3.5
1	A	236	ASP	3.3
1	A	332	LEU	3.2
1	A	9	GLN	3.1
1	A	335	GLN	3.0
1	A	312	ASP	2.9
1	A	185	THR	2.8
1	A	11	PRO	2.6
1	A	61	ASP	2.6
1	A	233	GLN	2.6
1	A	337	LYS	2.6
1	A	62	ASP	2.5
1	A	309	CYS	2.5
1	A	278	ALA	2.3
1	A	144	ASP	2.3
1	A	198	ILE	2.2
1	A	245	LEU	2.1
1	A	113	GLN	2.1
1	A	310	ARG	2.1
1	A	279	GLY	2.1
1	A	23	GLU	2.1
1	A	184	THR	2.0

6.2 Non-standard residues in protein, DNA, RNA chains [i](#)

In the following table, the Atoms column lists the number of modelled atoms in the group and the number defined in the chemical component dictionary. The B-factors column lists the minimum, median, 95th percentile and maximum values of B factors of atoms in the group. The column labelled 'Q< 0.9' lists the number of atoms with occupancy less than 0.9.

Mol	Type	Chain	Res	Atoms	RSCC	RSR	B-factors(Å ²)	Q<0.9
2	M3L	D	9	12/13	0.94	0.13	14,19,22,25	0

6.3 Carbohydrates [i](#)

There are no monosaccharides in this entry.

6.4 Ligands [i](#)

In the following table, the Atoms column lists the number of modelled atoms in the group and the number defined in the chemical component dictionary. The B-factors column lists the minimum, median, 95th percentile and maximum values of B factors of atoms in the group. The column labelled 'Q< 0.9' lists the number of atoms with occupancy less than 0.9.

Mol	Type	Chain	Res	Atoms	RSCC	RSR	B-factors(Å ²)	Q<0.9
3	PD2	A	401	12/12	0.98	0.18	12,14,15,16	0
5	ZN	A	403	1/1	0.99	0.05	30,30,30,30	0
4	NI	A	402	1/1	1.00	0.08	15,15,15,15	0

6.5 Other polymers [i](#)

There are no such residues in this entry.