



## Full wwPDB EM Validation Report ⓘ

Dec 31, 2024 – 06:15 PM EST

PDB ID : 8JXF  
EMDB ID : EMD-36699  
Title : rat megalin RAP complex bodyA  
Authors : Goto, S.; Tsutsumi, A.; Lee, Y.; Hosojima, M.; Kabasawa, H.; Komochi, K.; Yun-san, L.; Nagatoshi, S.; Tsumoto, K.; Nishizawa, T.; Kikkawa, M.; Saito, A.  
Deposited on : 2023-06-30  
Resolution : 3.60 Å (reported)  
Based on initial model : .

This is a Full wwPDB EM Validation Report for a publicly released PDB entry.

We welcome your comments at [validation@mail.wwpdb.org](mailto:validation@mail.wwpdb.org)

A user guide is available at

<https://www.wwpdb.org/validation/2017/EMValidationReportHelp>

with specific help available everywhere you see the ⓘ symbol.

The types of validation reports are described at

<http://www.wwpdb.org/validation/2017/FAQs#types>.

---

The following versions of software and data (see [references ⓘ](#)) were used in the production of this report:

EMDB validation analysis : 0.0.1.dev113  
Mogul : 2022.3.0, CSD as543be (2022)  
MolProbity : 4.02b-467  
Percentile statistics : 20231227.v01 (using entries in the PDB archive December 27th 2023)  
MapQ : 1.9.13  
Ideal geometry (proteins) : Engh & Huber (2001)  
Ideal geometry (DNA, RNA) : Parkinson et al. (1996)  
Validation Pipeline (wwPDB-VP) : 2.40

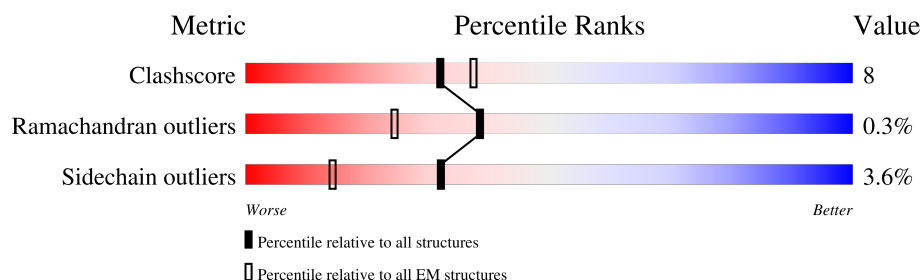
# 1 Overall quality at a glance

The following experimental techniques were used to determine the structure:

*ELECTRON MICROSCOPY*

The reported resolution of this entry is 3.60 Å.

Percentile scores (ranging between 0-100) for global validation metrics of the entry are shown in the following graphic. The table shows the number of entries on which the scores are based.



Metric	Whole archive (#Entries)	EM structures (#Entries)
Clashscore	210492	15764
Ramachandran outliers	207382	16835
Sidechain outliers	206894	16415

The table below summarises the geometric issues observed across the polymeric chains and their fit to the map. The red, orange, yellow and green segments of the bar indicate the fraction of residues that contain outliers for  $\geq 3$ , 2, 1 and 0 types of geometric quality criteria respectively. A grey segment represents the fraction of residues that are not modelled. The numeric value for each fraction is indicated below the corresponding segment, with a dot representing fractions  $\leq 5\%$ . The upper red bar (where present) indicates the fraction of residues that have poor fit to the EM map (all-atom inclusion  $< 40\%$ ). The numeric value is given above the bar.

Mol	Chain	Length	Quality of chain
1	C	360	
2	B	4660	
3	O	5	
4	A	3	
5	D	3	
6	E	5	
6	H	5	
6	I	5	

*Continued on next page...*

Continued from previous page...

Mol	Chain	Length	Quality of chain
7	F	3	<div><div></div><div>67%</div><div>33%</div><div>67%</div></div>
7	G	3	<div><div></div><div>100%</div></div>

## 2 Entry composition

There are 10 unique types of molecules in this entry. The entry contains 9618 atoms, of which 0 are hydrogens and 0 are deuteriums.

In the tables below, the AltConf column contains the number of residues with at least one atom in alternate conformation and the Trace column contains the number of residues modelled with at most 2 atoms.

- Molecule 1 is a protein called Alpha-2-macroglobulin receptor-associated protein.

Mol	Chain	Residues	Atoms					AltConf	Trace
1	C	72	Total	C	N	O	S	0	0
			599	381	110	107	1		

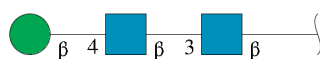
- Molecule 2 is a protein called LDL receptor related protein 2.

Mol	Chain	Residues	Atoms					AltConf	Trace
2	B	1089	Total	C	N	O	S	0	0
			8548	5154	1550	1711	133		

- Molecule 3 is a protein called unclear peptide.

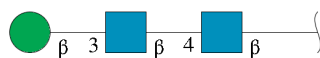
Mol	Chain	Residues	Atoms				AltConf	Trace
3	O	5	Total	C	N	O	0	0
			28	16	6	6		

- Molecule 4 is an oligosaccharide called beta-D-mannopyranose-(1-4)-2-acetamido-2-deoxy-beta-D-glucopyranose-(1-3)-2-acetamido-2-deoxy-beta-D-glucopyranose.



Mol	Chain	Residues	Atoms				AltConf	Trace
4	A	3	Total	C	N	O	0	0
			39	22	2	15		

- Molecule 5 is an oligosaccharide called beta-D-mannopyranose-(1-3)-2-acetamido-2-deoxy-beta-D-glucopyranose-(1-4)-2-acetamido-2-deoxy-beta-D-glucopyranose.



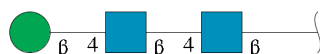
Mol	Chain	Residues	Atoms				AltConf	Trace
5	D	3	Total	C	N	O	0	0
			39	22	2	15		

- Molecule 6 is an oligosaccharide called alpha-D-mannopyranose-(1-3)-[alpha-D-mannopyranose-(1-6)]beta-D-mannopyranose-(1-4)-2-acetamido-2-deoxy-beta-D-glucopyranose-(1-4)-2-acetamido-2-deoxy-beta-D-glucopyranose.



Mol	Chain	Residues	Atoms				AltConf	Trace
6	E	5	Total	C	N	O	0	0
			61	34	2	25		
6	H	5	Total	C	N	O	0	0
			61	34	2	25		
6	I	5	Total	C	N	O	0	0
			61	34	2	25		

- Molecule 7 is an oligosaccharide called beta-D-mannopyranose-(1-4)-2-acetamido-2-deoxy-beta-D-glucopyranose-(1-4)-2-acetamido-2-deoxy-beta-D-glucopyranose.



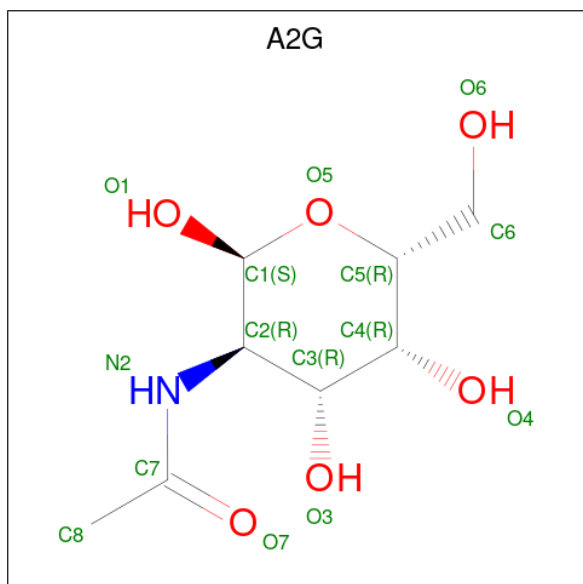
Mol	Chain	Residues	Atoms				AltConf	Trace
7	F	3	Total	C	N	O	0	0
			39	22	2	15		
7	G	3	Total	C	N	O	0	0
			39	22	2	15		

- Molecule 8 is 2-acetamido-2-deoxy-beta-D-glucopyranose (three-letter code: NAG) (formula: C<sub>8</sub>H<sub>15</sub>NO<sub>6</sub>).



Mol	Chain	Residues	Atoms				AltConf
8	B	1	Total	C	N	O	0
			14	8	1	5	
8	B	1	Total	C	N	O	0
			14	8	1	5	

- Molecule 9 is 2-acetamido-2-deoxy-alpha-D-galactopyranose (three-letter code: A2G) (formula:  $C_8H_{15}NO_6$ ).



Mol	Chain	Residues	Atoms				AltConf
9	B	1	Total	C	N	O	0
			14	8	1	5	

*Continued on next page...*

*Continued from previous page...*

Mol	Chain	Residues	Atoms				AltConf
9	B	1	Total	C	N	O	0
			14	8	1	5	
9	B	1	Total	C	N	O	0
			14	8	1	5	
9	B	1	Total	C	N	O	0
			14	8	1	5	

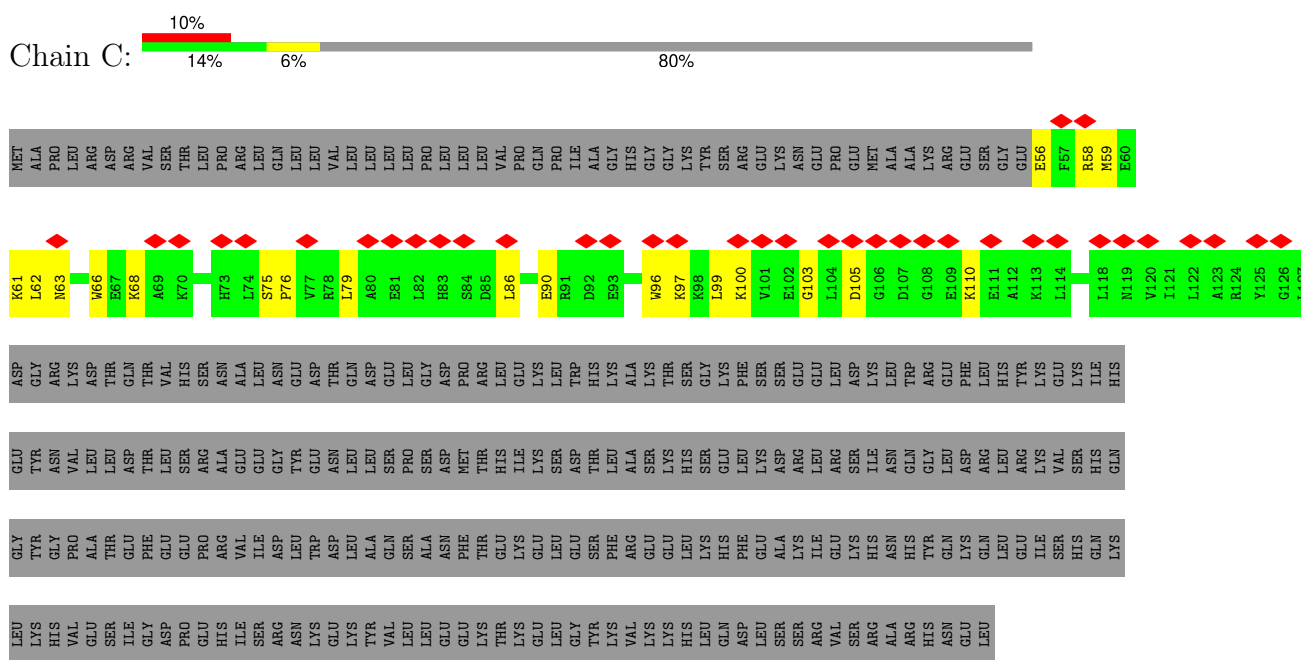
- Molecule 10 is CALCIUM ION (three-letter code: CA) (formula: Ca).

Mol	Chain	Residues	Atoms		AltConf
10	B	20	Total	Ca	0
			20	20	

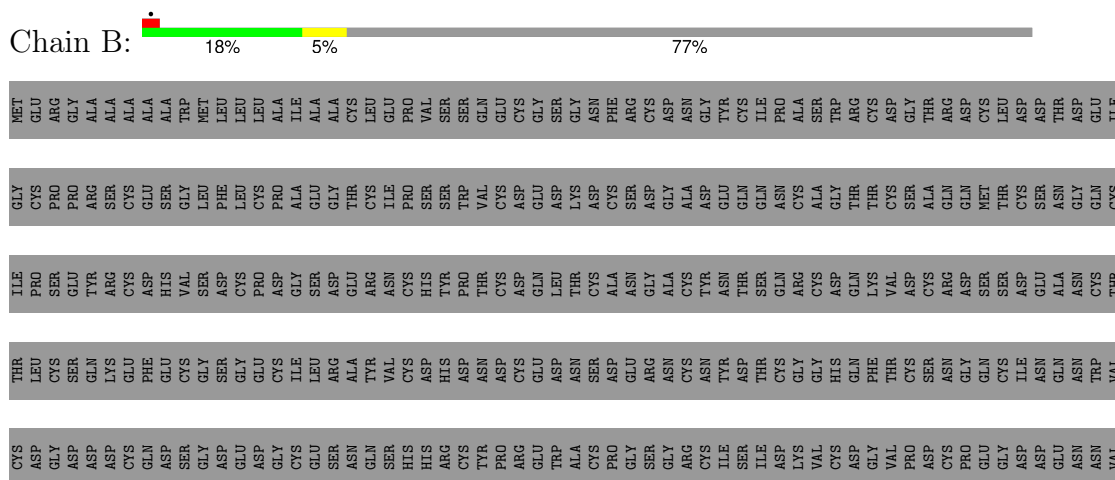
### 3 Residue-property plots

These plots are drawn for all protein, RNA, DNA and oligosaccharide chains in the entry. The first graphic for a chain summarises the proportions of the various outlier classes displayed in the second graphic. The second graphic shows the sequence view annotated by issues in geometry and atom inclusion in map density. Residues are color-coded according to the number of geometric quality criteria for which they contain at least one outlier: green = 0, yellow = 1, orange = 2 and red = 3 or more. A red diamond above a residue indicates a poor fit to the EM map for this residue (all-atom inclusion < 40%). Stretches of 2 or more consecutive residues without any outlier are shown as a green connector. Residues present in the sample, but not in the model, are shown in grey.

- Molecule 1: Alpha-2-macroglobulin receptor-associated protein



- Molecule 2: LDL receptor related protein 2












ALA	SER	LYS	ARG	ASN	LEU	THR	PRO	PRO	TYR	THR	ALA	THR	GLU	ASP	PHE	LYS	ASP	ALA	LEU	LYS	VAL	LYS	GLU	GLY	ASP	THR	ALA	THR	ASN	PHE	GLU	ASN	VAL				
PRO	GLU	PRO	LYS	PRO	ALA	SER	GLY	GLY	ALA	ASP	THR	ILE	GLN	LYS	TRP	ASN	PHE	GLN	THR	LYS	GLY	PRO	GLY	VAL	GLY	ASP	ALA	THR	ASN	GLN	GLY	VAL	GLU				
PHE	VAL	MET	GLU	VAL	GLY	LYS	PRO	GLN	VAL	PHE	GLU	ILE	GLU	PRO	ALA	ALA	LYS	ASN	LEU	THR	ASN	GLY	ASN	GLY	PRO	LEU	VAL	THR	ALA	ARG	THR	GLU	VAL				
LYS	THR	GLY	SER	LEU	LEU	LEU	LEU	THR	PRO	LYS	LEU	LEU	PRO	PRO	GLY	LEU	CYS	LYS	CYS	GLY	SER	GLY	GLY	GLY	GLY	GLY	LEU	THR	GLY	ILE	THR	GLY	THR				
ASN	GLU	ALA	ASN	ASN	LEU	GLU	GLU	GLY	GLY	GLY	GLY	GLY	GLY	GLY	GLY	GLY	GLY	GLY	GLY	GLY	GLY	GLY	GLY	GLY	GLY	GLY	GLY	GLY	GLY	GLY	GLY	GLY	GLY				
GLY	GLY	GLY	GLY	GLY	GLY	GLY	GLY	GLY	GLY	GLY	GLY	GLY	GLY	GLY	GLY	GLY	GLY	GLY	GLY	GLY	GLY	GLY	GLY	GLY	GLY	GLY	GLY	GLY	GLY	GLY	GLY	GLY	GLY				
THR	THR	THR	THR	THR	THR	THR	THR	THR	THR	THR	THR	THR	THR	THR	THR	THR	THR	THR	THR	THR	THR	THR	THR	THR	THR	THR	THR	THR	THR	THR	THR	THR	THR				
TRP	TRP	TRP	TRP	TRP	TRP	TRP	TRP	TRP	TRP	TRP	TRP	TRP	TRP	TRP	TRP	TRP	TRP	TRP	TRP	TRP	TRP	TRP	TRP	TRP	TRP	TRP	TRP	TRP	TRP	TRP	TRP	TRP	TRP				
VAL	VAL	VAL	VAL	VAL	VAL	VAL	VAL	VAL	VAL	VAL	VAL	VAL	VAL	VAL	VAL	VAL	VAL	VAL	VAL	VAL	VAL	VAL	VAL	VAL	VAL	VAL	VAL	VAL	VAL	VAL	VAL	VAL	VAL				
ASN	ASN	ASN	ASN	ASN	ASN	ASN	ASN	ASN	ASN	ASN	ASN	ASN	ASN	ASN	ASN	ASN	ASN	ASN	ASN	ASN	ASN	ASN	ASN	ASN	ASN	ASN	ASN	ASN	ASN	ASN	ASN	ASN	ASN				
GLY	GLY	GLY	GLY	GLY	GLY	GLY	GLY	GLY	GLY	GLY	GLY	GLY	GLY	GLY	GLY	GLY	GLY	GLY	GLY	GLY	GLY	GLY	GLY	GLY	GLY	GLY	GLY	GLY	GLY	GLY	GLY	GLY					
GLU	GLU	GLU	GLU	GLU	GLU	GLU	GLU	GLU	GLU	GLU	GLU	GLU	GLU	GLU	GLU	GLU	GLU	GLU	GLU	GLU	GLU	GLU	GLU	GLU	GLU	GLU	GLU	GLU	GLU	GLU	GLU	GLU	GLU				
LEU	LEU	LEU	LEU	LEU	LEU	LEU	LEU	LEU	LEU	LEU	LEU	LEU	LEU	LEU	LEU	LEU	LEU	LEU	LEU	LEU	LEU	LEU	LEU	LEU	LEU	LEU	LEU	LEU	LEU	LEU	LEU	LEU	LEU				
PRO	PRO	PRO	PRO	PRO	PRO	PRO	PRO	PRO	PRO	PRO	PRO	PRO	PRO	PRO	PRO	PRO	PRO	PRO	PRO	PRO	PRO	PRO	PRO	PRO	PRO	PRO	PRO	PRO	PRO	PRO	PRO	PRO	PRO	PRO			
ARG	ARG	ARG	ARG	ARG	ARG	ARG	ARG	ARG	ARG	ARG	ARG	ARG	ARG	ARG	ARG	ARG	ARG	ARG	ARG	ARG	ARG	ARG	ARG	ARG	ARG	ARG	ARG	ARG	ARG	ARG	ARG	ARG	ARG	ARG			
ASP	ASP	ASP	ASP	ASP	ASP	ASP	ASP	ASP	ASP	ASP	ASP	ASP	ASP	ASP	ASP	ASP	ASP	ASP	ASP	ASP	ASP	ASP	ASP	ASP	ASP	ASP	ASP	ASP	ASP	ASP	ASP	ASP	ASP	ASP			
THR	THR	THR	THR	THR	THR	THR	THR	THR	THR	THR	THR	THR	THR	THR	THR	THR	THR	THR	THR	THR	THR	THR	THR	THR	THR	THR	THR	THR	THR	THR	THR	THR	THR	THR			
GLN	GLN	GLN	GLN	GLN	GLN	GLN	GLN	GLN	GLN	GLN	GLN	GLN	GLN	GLN	GLN	GLN	GLN	GLN	GLN	GLN	GLN	GLN	GLN	GLN	GLN	GLN	GLN	GLN	GLN	GLN	GLN	GLN	GLN	GLN			
VAL	VAL	VAL	VAL	VAL	VAL	VAL	VAL	VAL	VAL	VAL	VAL	VAL	VAL	VAL	VAL	VAL	VAL	VAL	VAL	VAL	VAL	VAL	VAL	VAL	VAL	VAL	VAL	VAL	VAL	VAL	VAL	VAL	VAL	VAL	VAL		
ASN	ASN	ASN	ASN	ASN	ASN	ASN	ASN	ASN	ASN	ASN	ASN	ASN	ASN	ASN	ASN	ASN	ASN	ASN	ASN	ASN	ASN	ASN	ASN	ASN	ASN	ASN	ASN	ASN	ASN	ASN	ASN	ASN	ASN	ASN	ASN		
GLY	GLY	GLY	GLY	GLY	GLY	GLY	GLY	GLY	GLY	GLY	GLY	GLY	GLY	GLY	GLY	GLY	GLY	GLY	GLY	GLY	GLY	GLY	GLY	GLY	GLY	GLY	GLY	GLY	GLY	GLY	GLY	GLY	GLY	GLY			
GLU	GLU	GLU	GLU	GLU	GLU	GLU	GLU	GLU	GLU	GLU	GLU	GLU	GLU	GLU	GLU	GLU	GLU	GLU	GLU	GLU	GLU	GLU	GLU	GLU	GLU	GLU	GLU	GLU	GLU	GLU	GLU	GLU	GLU	GLU			
LEU	LEU	LEU	LEU	LEU	LEU	LEU	LEU	LEU	LEU	LEU	LEU	LEU	LEU	LEU	LEU	LEU	LEU	LEU	LEU	LEU	LEU	LEU	LEU	LEU	LEU	LEU	LEU	LEU	LEU	LEU	LEU	LEU	LEU	LEU	LEU		
PRO	PRO	PRO	PRO	PRO	PRO	PRO	PRO	PRO	PRO	PRO	PRO	PRO	PRO	PRO	PRO	PRO	PRO	PRO	PRO	PRO	PRO	PRO	PRO	PRO	PRO	PRO	PRO	PRO	PRO	PRO	PRO	PRO	PRO	PRO	PRO	PRO	
ARG	ARG	ARG	ARG	ARG	ARG	ARG	ARG	ARG	ARG	ARG	ARG	ARG	ARG	ARG	ARG	ARG	ARG	ARG	ARG	ARG	ARG	ARG	ARG	ARG	ARG	ARG	ARG	ARG	ARG	ARG	ARG	ARG	ARG	ARG	ARG	ARG	
ASP	ASP	ASP	ASP	ASP	ASP	ASP	ASP	ASP	ASP	ASP	ASP	ASP	ASP	ASP	ASP	ASP	ASP	ASP	ASP	ASP	ASP	ASP	ASP	ASP	ASP	ASP	ASP	ASP	ASP	ASP	ASP	ASP	ASP	ASP	ASP	ASP	
THR	THR	THR	THR	THR	THR	THR	THR	THR	THR	THR	THR	THR	THR	THR	THR	THR	THR	THR	THR	THR	THR	THR	THR	THR	THR	THR	THR	THR	THR	THR	THR	THR	THR	THR	THR	THR	
GLN	GLN	GLN	GLN	GLN	GLN	GLN	GLN	GLN	GLN	GLN	GLN	GLN	GLN	GLN	GLN	GLN	GLN	GLN	GLN	GLN	GLN	GLN	GLN	GLN	GLN	GLN	GLN	GLN	GLN	GLN	GLN	GLN	GLN	GLN	GLN		
VAL	VAL	VAL	VAL	VAL	VAL	VAL	VAL	VAL	VAL	VAL	VAL	VAL	VAL	VAL	VAL	VAL	VAL	VAL	VAL	VAL	VAL	VAL	VAL	VAL	VAL	VAL	VAL	VAL	VAL	VAL	VAL	VAL	VAL	VAL	VAL	VAL	
ASN	ASN	ASN	ASN	ASN	ASN	ASN	ASN	ASN	ASN	ASN	ASN	ASN	ASN	ASN	ASN	ASN	ASN	ASN	ASN	ASN	ASN	ASN	ASN	ASN	ASN	ASN	ASN	ASN	ASN	ASN	ASN	ASN	ASN	ASN	ASN	ASN	
GLY	GLY	GLY	GLY	GLY	GLY	GLY	GLY	GLY	GLY	GLY	GLY	GLY	GLY	GLY	GLY	GLY	GLY	GLY	GLY	GLY	GLY	GLY	GLY	GLY	GLY	GLY	GLY	GLY	GLY	GLY	GLY	GLY	GLY	GLY	GLY		
GLU	GLU	GLU	GLU	GLU	GLU	GLU	GLU	GLU	GLU	GLU	GLU	GLU	GLU	GLU	GLU	GLU	GLU	GLU	GLU	GLU	GLU	GLU	GLU	GLU	GLU	GLU	GLU	GLU	GLU	GLU	GLU	GLU	GLU	GLU	GLU		
LEU	LEU	LEU	LEU	LEU	LEU	LEU	LEU	LEU	LEU	LEU	LEU	LEU	LEU	LEU	LEU	LEU	LEU	LEU	LEU	LEU	LEU	LEU	LEU	LEU	LEU	LEU	LEU	LEU	LEU	LEU	LEU	LEU	LEU	LEU	LEU	LEU	
PRO	PRO	PRO	PRO	PRO	PRO	PRO	PRO	PRO	PRO	PRO	PRO	PRO	PRO	PRO	PRO	PRO	PRO	PRO	PRO	PRO	PRO	PRO	PRO	PRO	PRO	PRO	PRO	PRO	PRO	PRO	PRO	PRO	PRO	PRO	PRO	PRO	PRO
ARG	ARG	ARG	ARG	ARG	ARG	ARG	ARG	ARG	ARG	ARG	ARG	ARG	ARG	ARG	ARG	ARG	ARG	ARG	ARG	ARG	ARG	ARG	ARG	ARG	ARG	ARG	ARG	ARG	ARG	ARG	ARG	ARG	ARG	ARG	ARG	ARG	ARG
ASP	ASP	ASP	ASP	ASP	ASP	ASP	ASP	ASP	ASP	ASP	ASP	ASP	ASP	ASP	ASP	ASP	ASP	ASP	ASP	ASP	ASP	ASP	ASP	ASP	ASP	ASP	ASP	ASP	ASP	ASP	ASP	ASP	ASP	ASP	ASP	ASP	ASP
THR	THR	THR	THR	THR	THR	THR	THR	THR	THR	THR	THR	THR	THR	THR	THR	THR	THR	THR	THR	THR	THR	THR	THR	THR	THR	THR	THR	THR	THR	THR	THR	THR	THR	THR	THR	THR	THR
GLN	GLN	GLN	GLN	GLN	GLN	GLN	GLN	GLN	GLN	GLN	GLN	GLN	GLN	GLN	GLN	GLN	GLN	GLN	GLN	GLN	GLN	GLN	GLN	GLN	GLN	GLN	GLN	GLN	GLN	GLN	GLN	GLN	GLN	GLN	GLN	GLN	
VAL	VAL	VAL	VAL	VAL	VAL	VAL	VAL	VAL	VAL	VAL	VAL	VAL	VAL	VAL	VAL	VAL	VAL	VAL	VAL	VAL	VAL	VAL	VAL	VAL	VAL	VAL	VAL	VAL	VAL	VAL	VAL	VAL	VAL	VAL	VAL	VAL	VAL
ASN	ASN	ASN	ASN	ASN	ASN	ASN	ASN	ASN	ASN	ASN	ASN	ASN	ASN	ASN	ASN	ASN	ASN	ASN	ASN	ASN	ASN	ASN	ASN	ASN	ASN	ASN	ASN	ASN	ASN	ASN	ASN	ASN	ASN	ASN	ASN	ASN	ASN
GLY	GLY	GLY	GLY	GLY	GLY	GLY	GLY	GLY	GLY	GLY	GLY	GLY	GLY	GLY	GLY	GLY	GLY	GLY	GLY	GLY	GLY	GLY	GLY	GLY	GLY	GLY	GLY	GLY	GLY								

- Molecule 3: unclear peptide

Chain O:  80% 20%



- Molecule 4: beta-D-mannopyranose-(1-4)-2-acetamido-2-deoxy-beta-D-glucopyranose-(1-3)-2-acetamido-2-deoxy-beta-D-glucopyranose

Chain A:  33% 100%




- Molecule 5: beta-D-mannopyranose-(1-3)-2-acetamido-2-deoxy-beta-D-glucopyranose-(1-4)-2-acetamido-2-deoxy-beta-D-glucopyranose

Chain D:  33% 67%



- Molecule 6: alpha-D-mannopyranose-(1-3)-[alpha-D-mannopyranose-(1-6)]beta-D-mannopyranose-(1-4)-2-acetamido-2-deoxy-beta-D-glucopyranose-(1-4)-2-acetamido-2-deoxy-beta-D-glucopyranose

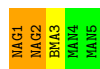
Chain E:  60% 40%



- Molecule 6: alpha-D-mannopyranose-(1-3)-[alpha-D-mannopyranose-(1-6)]beta-D-mannopyranose-(1-4)-2-acetamido-2-deoxy-beta-D-glucopyranose-(1-4)-2-acetamido-2-deoxy-beta-D-glucopyranose

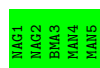
nose

Chain H: 



• Molecule 6: alpha-D-mannopyranose-(1-3)-[alpha-D-mannopyranose-(1-6)]beta-D-mannopyranose-(1-4)-2-acetamido-2-deoxy-beta-D-glucopyranose-(1-4)-2-acetamido-2-deoxy-beta-D-glucopyranose

Chain I: 



• Molecule 7: beta-D-mannopyranose-(1-4)-2-acetamido-2-deoxy-beta-D-glucopyranose-(1-4)-2-acetamido-2-deoxy-beta-D-glucopyranose

Chain F: 



• Molecule 7: beta-D-mannopyranose-(1-4)-2-acetamido-2-deoxy-beta-D-glucopyranose-(1-4)-2-acetamido-2-deoxy-beta-D-glucopyranose

Chain G: 



## 4 Experimental information

Property	Value	Source
EM reconstruction method	SINGLE PARTICLE	Depositor
Imposed symmetry	POINT, C1	Depositor
Number of particles used	67775	Depositor
Resolution determination method	FSC 0.143 CUT-OFF	Depositor
CTF correction method	PHASE FLIPPING AND AMPLITUDE CORRECTION	Depositor
Microscope	FEI TITAN KRIOS	Depositor
Voltage (kV)	300	Depositor
Electron dose ( $e^-/\text{\AA}^2$ )	50.00	Depositor
Minimum defocus (nm)	600	Depositor
Maximum defocus (nm)	1600	Depositor
Magnification	Not provided	
Image detector	GATAN K3 BIOQUANTUM (6k x 4k)	Depositor
Maximum map value	0.173	Depositor
Minimum map value	-0.093	Depositor
Average map value	0.000	Depositor
Map value standard deviation	0.003	Depositor
Recommended contour level	0.0271	Depositor
Map size (Å)	366.86002, 366.86002, 366.86002	wwPDB
Map dimensions	260, 260, 260	wwPDB
Map angles (°)	90.0, 90.0, 90.0	wwPDB
Pixel spacing (Å)	1.411, 1.411, 1.411	Depositor

## 5 Model quality [i](#)

### 5.1 Standard geometry [i](#)

Bond lengths and bond angles in the following residue types are not validated in this section: A2G, MAN, CA, NAG, BMA

The Z score for a bond length (or angle) is the number of standard deviations the observed value is removed from the expected value. A bond length (or angle) with  $|Z| > 5$  is considered an outlier worth inspection. RMSZ is the root-mean-square of all Z scores of the bond lengths (or angles).

Mol	Chain	Bond lengths		Bond angles	
		RMSZ	$\# Z  > 5$	RMSZ	$\# Z  > 5$
1	C	0.24	0/608	0.46	0/813
2	B	0.28	0/8752	0.54	0/11862
3	O	0.23	0/7	0.48	0/8
All	All	0.27	0/9367	0.53	0/12683

There are no bond length outliers.

There are no bond angle outliers.

There are no chirality outliers.

There are no planarity outliers.

### 5.2 Too-close contacts [i](#)

In the following table, the Non-H and H(model) columns list the number of non-hydrogen atoms and hydrogen atoms in the chain respectively. The H(added) column lists the number of hydrogen atoms added and optimized by MolProbity. The Clashes column lists the number of clashes within the asymmetric unit, whereas Symm-Clashes lists symmetry-related clashes.

Mol	Chain	Non-H	H(model)	H(added)	Clashes	Symm-Clashes
1	C	599	0	620	15	0
2	B	8548	0	7601	140	0
3	O	28	0	12	1	0
4	A	39	0	34	0	0
5	D	39	0	34	0	0
6	E	61	0	52	0	0
6	H	61	0	52	1	0
6	I	61	0	52	0	0
7	F	39	0	34	0	0
7	G	39	0	34	0	0

*Continued on next page...*

*Continued from previous page...*

Mol	Chain	Non-H	H(model)	H(added)	Clashes	Symm-Clashes
8	B	28	0	26	0	0
9	B	56	0	48	6	0
10	B	20	0	0	0	0
All	All	9618	0	8599	153	0

The all-atom clashscore is defined as the number of clashes found per 1000 atoms (including hydrogen atoms). The all-atom clashscore for this structure is 8.

All (153) close contacts within the same asymmetric unit are listed below, sorted by their clash magnitude.

Atom-1	Atom-2	Interatomic distance (Å)	Clash overlap (Å)
2:B:1225:THR:OG1	9:B:4703:A2G:C1	1.82	1.27
2:B:1225:THR:CB	9:B:4703:A2G:C1	2.26	1.14
2:B:1225:THR:HB	9:B:4703:A2G:C1	1.92	0.96
2:B:3505:ARG:HD3	2:B:3505:ARG:H	1.37	0.88
2:B:1225:THR:HB	9:B:4703:A2G:O5	1.78	0.84
2:B:3115:GLU:HA	2:B:3118:ASP:HB3	1.65	0.77
2:B:3689:LYS:HE2	2:B:3711:SER:HB2	1.65	0.76
1:C:68:LYS:NZ	2:B:2975:ASP:OD2	2.22	0.71
2:B:3356:THR:O	2:B:3357:ASN:HB2	1.91	0.70
2:B:2959:ASN:ND2	2:B:2982:ASP:OD2	2.28	0.67
2:B:3611:GLN:OE1	2:B:3638:ARG:HD3	1.95	0.67
1:C:97:LYS:HA	1:C:100:LYS:HG2	1.77	0.66
2:B:2872:CYS:SG	2:B:2879:ILE:HG12	2.36	0.66
2:B:2939:GLU:HG2	2:B:2941:GLN:H	1.61	0.64
2:B:3083:ARG:NE	2:B:3084:CYS:O	2.31	0.63
2:B:3016:ARG:HD3	2:B:3045:ARG:HD2	1.80	0.63
1:C:97:LYS:HE3	2:B:2925:TRP:CZ3	2.33	0.63
2:B:2870:PHE:O	2:B:2879:ILE:N	2.31	0.63
2:B:3425:THR:HG22	2:B:3432:VAL:HG22	1.81	0.63
1:C:56:GLU:OE2	1:C:66:TRP:NE1	2.32	0.62
2:B:2880:PRO:HB2	2:B:2883:TRP:HD1	1.62	0.62
2:B:3378:ASN:ND2	2:B:3438:TYR:OH	2.33	0.61
2:B:3395:ASP:OD1	2:B:3399:HIS:N	2.34	0.60
2:B:3079:LEU:O	2:B:3081:GLN:N	2.33	0.60
1:C:96:TRP:HA	1:C:110:LYS:HZ3	1.67	0.60
2:B:3048:PRO:HD2	2:B:3051:PHE:HE1	1.65	0.60
2:B:3915:SER:HA	2:B:3918:LYS:HG3	1.84	0.59
2:B:3843:TYR:CD2	2:B:3854:HIS:HB3	2.38	0.58
2:B:1225:THR:HB	9:B:4703:A2G:C5	2.34	0.58
1:C:97:LYS:HE3	2:B:2925:TRP:CH2	2.38	0.58

*Continued on next page...*



*Continued from previous page...*

Atom-1	Atom-2	Interatomic distance (Å)	Clash overlap (Å)
2:B:3333:GLN:HG3	2:B:3467:MET:SD	2.44	0.57
2:B:3039:PHE:N	2:B:3047:ILE:O	2.37	0.57
1:C:99:LEU:O	1:C:103:GLY:N	2.37	0.57
2:B:2999:GLU:HA	2:B:3009:ARG:HA	1.87	0.56
2:B:3831:GLU:O	2:B:3854:HIS:HB2	2.05	0.56
1:C:59:MET:HB3	1:C:62:LEU:HB2	1.87	0.56
2:B:3145:LEU:HD22	2:B:3146:MET:H	1.71	0.56
2:B:3118:ASP:CG	2:B:3121:ILE:H	2.09	0.56
2:B:3366:ILE:HD11	2:B:3369:PRO:HB3	1.88	0.55
2:B:2933:CYS:HB2	2:B:2938:ASP:HB3	1.87	0.55
2:B:2950:CYS:HB3	2:B:2956:THR:HB	1.88	0.55
2:B:3838:PHE:HB3	2:B:3839:PRO:HD2	1.87	0.55
1:C:62:LEU:HG	1:C:86:LEU:HD22	1.89	0.55
2:B:3225:LEU:HD13	2:B:3256:MET:HE1	1.89	0.54
2:B:2959:ASN:O	2:B:2961:ARG:NH2	2.40	0.54
2:B:3425:THR:HB	2:B:3453:PRO:HG2	1.90	0.54
2:B:3238:ARG:NH1	2:B:3464:GLN:O	2.41	0.54
2:B:3843:TYR:HD2	2:B:3854:HIS:HB3	1.73	0.54
2:B:3016:ARG:NE	2:B:3044:GLY:O	2.41	0.54
2:B:3125:ASP:N	2:B:3125:ASP:OD1	2.41	0.54
1:C:59:MET:O	1:C:63:ASN:ND2	2.29	0.52
2:B:2886:ASP:OD1	2:B:2919:ARG:NH2	2.41	0.52
2:B:2870:PHE:N	2:B:2879:ILE:O	2.26	0.52
2:B:3246:ILE:HG12	2:B:3253:ILE:HG12	1.91	0.52
2:B:2969:PRO:HD2	2:B:2972:TRP:CD2	2.45	0.51
2:B:3106:SER:HA	2:B:3109:LYS:HE3	1.92	0.51
2:B:3635:ARG:NH1	2:B:3649:CYS:SG	2.83	0.51
2:B:3333:GLN:OE1	2:B:3333:GLN:N	2.28	0.51
2:B:3392:GLU:HG3	2:B:3403:THR:HA	1.91	0.51
2:B:3048:PRO:HD2	2:B:3051:PHE:CE1	2.46	0.51
2:B:3126:HIS:HD1	2:B:3139:CYS:HA	1.75	0.51
6:H:1:NAG:H83	6:H:2:NAG:H83	1.93	0.51
2:B:3354:ASP:OD2	2:B:3485:LYS:HA	2.11	0.50
2:B:3356:THR:O	2:B:3357:ASN:CB	2.58	0.50
2:B:3280:ASP:OD2	2:B:3283:SER:OG	2.26	0.49
1:C:58:ARG:N	1:C:90:GLU:OE1	2.45	0.49
2:B:3788:ASP:OD1	2:B:3788:ASP:N	2.44	0.49
2:B:3836:THR:HG22	2:B:3843:TYR:CE1	2.47	0.49
2:B:3839:PRO:C	2:B:3841:GLY:H	2.16	0.49
2:B:3086:ASN:ND2	2:B:3102:CYS:O	2.44	0.49
2:B:1226:ARG:HD3	2:B:1231:CYS:HA	1.95	0.49

*Continued on next page...*

*Continued from previous page...*

Atom-1	Atom-2	Interatomic distance (Å)	Clash overlap (Å)
2:B:3372:ILE:HD11	2:B:3381:LEU:HD11	1.94	0.49
2:B:3681:ASP:OD2	2:B:3684:THR:HG22	2.12	0.48
2:B:2898:PRO:HD2	2:B:2900:THR:HG22	1.95	0.48
2:B:3123:ARG:HB2	2:B:3150:ARG:HG3	1.94	0.48
2:B:2984:LEU:O	2:B:2988:GLN:HG2	2.13	0.48
2:B:3334:ARG:HB3	2:B:3336:HIS:CD2	2.48	0.48
2:B:3225:LEU:HD23	2:B:3228:LEU:HD11	1.96	0.48
2:B:3223:LEU:HD11	2:B:3226:GLN:HB3	1.96	0.47
2:B:3588:ARG:O	2:B:3592:GLU:HB2	2.14	0.47
2:B:3009:ARG:HG2	2:B:3011:SER:H	1.78	0.47
2:B:1225:THR:CB	9:B:4703:A2G:O5	2.48	0.47
2:B:3016:ARG:NH1	2:B:3016:ARG:HB2	2.29	0.47
2:B:3916:ASP:N	2:B:3916:ASP:OD1	2.48	0.47
2:B:2903:HIS:CD2	2:B:2917:ASN:HD22	2.33	0.47
2:B:3246:ILE:HD11	2:B:3277:LEU:HB3	1.97	0.47
2:B:3122:SER:O	2:B:3124:CYS:N	2.48	0.47
2:B:3796:GLU:HG2	2:B:3797:MET:SD	2.55	0.47
2:B:3064:ASP:OD1	2:B:3064:ASP:N	2.33	0.47
2:B:3083:ARG:NE	2:B:3087:GLY:HA2	2.31	0.46
2:B:3308:MET:HE3	2:B:3311:GLN:HB3	1.96	0.46
2:B:3043:ASN:OD1	2:B:3043:ASN:N	2.49	0.46
2:B:3215:THR:OG1	2:B:3217:ASP:OD1	2.25	0.46
2:B:2932:ASP:HB2	2:B:2938:ASP:CG	2.36	0.45
2:B:3361:ILE:HG22	2:B:3362:ILE:HD13	1.98	0.45
2:B:2921:ILE:HD11	2:B:2938:ASP:HB2	1.98	0.45
2:B:3084:CYS:SG	2:B:3088:HIS:HB2	2.56	0.45
2:B:3553:ARG:NH1	2:B:3555:CYS:HB2	2.32	0.45
2:B:3671:ASP:OD1	2:B:3672:GLU:N	2.50	0.45
2:B:2864:THR:HG22	2:B:2864:THR:O	2.17	0.45
2:B:3116:CYS:SG	2:B:3135:PHE:HB2	2.57	0.45
2:B:2960:SER:HB3	2:B:2964:ASN:HB3	2.00	0.44
1:C:76:PRO:HA	1:C:79:LEU:HB3	2.00	0.44
2:B:3351:ILE:HD11	2:B:3355:GLY:HA2	1.99	0.44
2:B:2957:CYS:HB3	2:B:2984:LEU:HD11	2.00	0.44
2:B:3213:ASN:HB2	2:B:3224:ILE:HG13	1.99	0.44
2:B:3114:ASN:HB3	2:B:3117:LEU:HB2	1.99	0.44
2:B:3233:ALA:HA	2:B:3455:ASP:HB2	2.00	0.44
2:B:3829:SER:O	2:B:3832:SER:OG	2.25	0.44
2:B:2962:PRO:N	2:B:2963:PRO:HD2	2.32	0.44
2:B:3077:CYS:HB3	2:B:3081:GLN:HB2	1.98	0.44
2:B:3831:GLU:HB2	2:B:3855:VAL:HG12	1.99	0.43

*Continued on next page...*

*Continued from previous page...*

Atom-1	Atom-2	Interatomic distance (Å)	Clash overlap (Å)
2:B:3336:HIS:CG	2:B:3350:ARG:HD2	2.53	0.43
2:B:3130:ASP:HA	2:B:3135:PHE:HA	2.00	0.43
2:B:3591:CYS:O	2:B:3606:LYS:HG3	2.18	0.43
2:B:2877:ARG:HB3	2:B:2891:CYS:SG	2.59	0.43
2:B:3051:PHE:HB3	2:B:3058:ASP:OD2	2.19	0.43
2:B:3560:PHE:CG	2:B:3573:LEU:HD21	2.54	0.43
2:B:3294:ASP:HB3	2:B:3322:PHE:HB3	2.01	0.43
2:B:3863:CYS:O	2:B:3890:ARG:NH2	2.52	0.43
2:B:3116:CYS:SG	2:B:3129:THR:N	2.92	0.43
2:B:3807:CYS:HB3	2:B:3829:SER:HB3	2.01	0.43
2:B:3313:CYS:HA	2:B:3321:CYS:HA	2.01	0.42
2:B:3114:ASN:OD1	2:B:3116:CYS:HB2	2.19	0.42
2:B:3431:THR:OG1	2:B:3433:GLU:OE1	2.37	0.42
2:B:3282:VAL:HG21	2:B:3467:MET:HE2	2.01	0.42
2:B:3429:THR:HB	2:B:3431:THR:HG23	2.00	0.42
2:B:3505:ARG:NH1	2:B:3506:ASP:OD1	2.53	0.42
2:B:3165:CYS:HB3	2:B:3178:CYS:HB3	1.90	0.42
1:C:59:MET:HE3	1:C:61:LYS:H	1.84	0.42
2:B:1225:THR:HG22	2:B:1226:ARG:O	2.20	0.42
1:C:75:SER:O	1:C:79:LEU:N	2.42	0.41
1:C:100:LYS:NZ	1:C:105:ASP:HB3	2.35	0.41
2:B:3203:LEU:HD23	2:B:3458:VAL:HG22	2.01	0.41
2:B:3370:ASN:ND2	3:O:3:ASN:OD1	2.48	0.41
2:B:3791:ASP:OD1	2:B:3791:ASP:N	2.51	0.41
2:B:3371:ALA:HB3	2:B:3384:ALA:HB3	2.02	0.41
2:B:3669:PRO:HG2	2:B:3672:GLU:HB3	2.03	0.41
2:B:3146:MET:SD	2:B:3146:MET:N	2.93	0.41
2:B:3821:GLY:HA2	2:B:3837:ARG:NH2	2.36	0.41
2:B:3392:GLU:OE1	2:B:3401:ARG:NH1	2.54	0.41
2:B:3556:ARG:HD3	2:B:3822:ARG:NH2	2.36	0.41
2:B:1236:PHE:N	2:B:1245:ILE:O	2.46	0.41
2:B:3610:PRO:HG2	2:B:3613:TRP:CD2	2.56	0.41
2:B:3049:ARG:HE	2:B:3052:VAL:HG21	1.86	0.41
2:B:3115:GLU:H	2:B:3115:GLU:CD	2.24	0.41
2:B:3207:ASN:HD21	2:B:3449:THR:HG21	1.86	0.41
2:B:3201:PRO:HG3	2:B:3418:PHE:CE2	2.56	0.40
2:B:3213:ASN:OD1	2:B:3222:SER:OG	2.39	0.40
2:B:3852:LYS:HG2	2:B:3873:SER:OG	2.21	0.40
2:B:3433:GLU:OE2	2:B:3445:VAL:HG22	2.21	0.40
2:B:3508:THR:O	2:B:3508:THR:OG1	2.39	0.40
2:B:3255:ARG:NE	2:B:3264:GLU:OE2	2.40	0.40

There are no symmetry-related clashes.

## 5.3 Torsion angles [i](#)

### 5.3.1 Protein backbone [i](#)

In the following table, the Percentiles column shows the percent Ramachandran outliers of the chain as a percentile score with respect to all PDB entries followed by that with respect to all EM entries.

The Analysed column shows the number of residues for which the backbone conformation was analysed, and the total number of residues.

Mol	Chain	Analysed	Favoured	Allowed	Outliers	Percentiles	
1	C	70/360 (19%)	69 (99%)	1 (1%)	0	100	100
2	B	1085/4660 (23%)	1017 (94%)	64 (6%)	4 (0%)	30	63
3	O	1/5 (20%)	1 (100%)	0	0	100	100
All	All	1156/5025 (23%)	1087 (94%)	65 (6%)	4 (0%)	38	67

All (4) Ramachandran outliers are listed below:

Mol	Chain	Res	Type
2	B	3357	ASN
2	B	3123	ARG
2	B	3840	ASN
2	B	3839	PRO

### 5.3.2 Protein sidechains [i](#)

In the following table, the Percentiles column shows the percent sidechain outliers of the chain as a percentile score with respect to all PDB entries followed by that with respect to all EM entries.

The Analysed column shows the number of residues for which the sidechain conformation was analysed, and the total number of residues.

Mol	Chain	Analysed	Rotameric	Outliers	Percentiles	
1	C	64/326 (20%)	64 (100%)	0	100	100
2	B	975/4089 (24%)	938 (96%)	37 (4%)	28	57
3	O	1/1 (100%)	1 (100%)	0	100	100
All	All	1040/4416 (24%)	1003 (96%)	37 (4%)	32	59

All (37) residues with a non-rotameric sidechain are listed below:

Mol	Chain	Res	Type
2	B	1241	ASP
2	B	2878	CYS
2	B	2884	PHE
2	B	2933	CYS
2	B	2961	ARG
2	B	2965	ARG
2	B	2966	ARG
2	B	2979	ASP
2	B	2984	LEU
2	B	2992	MET
2	B	2993	ARG
2	B	3000	PHE
2	B	3050	PHE
2	B	3051	PHE
2	B	3079	LEU
2	B	3082	PHE
2	B	3083	ARG
2	B	3092	MET
2	B	3118	ASP
2	B	3146	MET
2	B	3150	ARG
2	B	3259	ASN
2	B	3334	ARG
2	B	3394	SER
2	B	3420	ASP
2	B	3426	ASP
2	B	3449	THR
2	B	3505	ARG
2	B	3538	LYS
2	B	3588	ARG
2	B	3636	THR
2	B	3689	LYS
2	B	3716	CYS
2	B	3737	LEU
2	B	3755	ASN
2	B	3822	ARG
2	B	3878	HIS

Sometimes sidechains can be flipped to improve hydrogen bonding and reduce clashes. All (8) such sidechains are listed below:

Mol	Chain	Res	Type
2	B	2903	HIS
2	B	2924	ASN
2	B	2989	ASN
2	B	3088	HIS
2	B	3336	HIS
2	B	3378	ASN
2	B	3631	HIS
2	B	3811	HIS

### 5.3.3 RNA ⓘ

There are no RNA molecules in this entry.

### 5.4 Non-standard residues in protein, DNA, RNA chains ⓘ

There are no non-standard protein/DNA/RNA residues in this entry.

### 5.5 Carbohydrates ⓘ

27 monosaccharides are modelled in this entry.

In the following table, the Counts columns list the number of bonds (or angles) for which Mogul statistics could be retrieved, the number of bonds (or angles) that are observed in the model and the number of bonds (or angles) that are defined in the Chemical Component Dictionary. The Link column lists molecule types, if any, to which the group is linked. The Z score for a bond length (or angle) is the number of standard deviations the observed value is removed from the expected value. A bond length (or angle) with  $|Z| > 2$  is considered an outlier worth inspection. RMSZ is the root-mean-square of all Z scores of the bond lengths (or angles).

Mol	Type	Chain	Res	Link	Bond lengths			Bond angles		
					Counts	RMSZ	$\# Z  > 2$	Counts	RMSZ	$\# Z  > 2$
4	NAG	A	1	4,2	14,14,15	0.56	0	17,19,21	1.04	2 (11%)
4	NAG	A	2	4	14,14,15	0.33	0	17,19,21	1.19	2 (11%)
4	BMA	A	3	4	11,11,12	0.22	0	15,15,17	0.84	1 (6%)
5	NAG	D	1	5,2	14,14,15	0.34	0	17,19,21	1.13	1 (5%)
5	NAG	D	2	5	14,14,15	0.49	0	17,19,21	0.92	1 (5%)
5	BMA	D	3	5	11,11,12	0.22	0	15,15,17	0.62	0
6	NAG	E	1	6,2	14,14,15	0.33	0	17,19,21	0.86	0
6	NAG	E	2	6	14,14,15	0.30	0	17,19,21	0.80	0
6	BMA	E	3	6	11,11,12	0.25	0	15,15,17	1.12	1 (6%)
6	MAN	E	4	6	11,11,12	0.24	0	15,15,17	0.75	1 (6%)

Mol	Type	Chain	Res	Link	Bond lengths			Bond angles		
					Counts	RMSZ	# Z  > 2	Counts	RMSZ	# Z  > 2
6	MAN	E	5	6	11,11,12	0.24	0	15,15,17	0.59	0
7	NAG	F	1	7,2	14,14,15	0.34	0	17,19,21	1.04	1 (5%)
7	NAG	F	2	7	14,14,15	0.42	0	17,19,21	1.34	1 (5%)
7	BMA	F	3	7	11,11,12	0.23	0	15,15,17	0.57	0
7	NAG	G	1	7,2	14,14,15	0.43	0	17,19,21	0.70	0
7	NAG	G	2	7	14,14,15	0.33	0	17,19,21	0.75	0
7	BMA	G	3	7	11,11,12	0.19	0	15,15,17	0.51	0
6	NAG	H	1	6,2	14,14,15	0.40	0	17,19,21	1.09	2 (11%)
6	NAG	H	2	6	14,14,15	0.40	0	17,19,21	1.33	1 (5%)
6	BMA	H	3	6	11,11,12	0.25	0	15,15,17	1.31	2 (13%)
6	MAN	H	4	6	11,11,12	0.22	0	15,15,17	0.46	0
6	MAN	H	5	6	11,11,12	0.22	0	15,15,17	0.44	0
6	NAG	I	1	6,2	14,14,15	0.27	0	17,19,21	0.72	0
6	NAG	I	2	6	14,14,15	0.29	0	17,19,21	0.62	0
6	BMA	I	3	6	11,11,12	0.22	0	15,15,17	0.70	0
6	MAN	I	4	6	11,11,12	0.26	0	15,15,17	0.60	0
6	MAN	I	5	6	11,11,12	0.26	0	15,15,17	0.59	0

In the following table, the Chirals column lists the number of chiral outliers, the number of chiral centers analysed, the number of these observed in the model and the number defined in the Chemical Component Dictionary. Similar counts are reported in the Torsion and Rings columns. '-' means no outliers of that kind were identified.

Mol	Type	Chain	Res	Link	Chirals	Torsions	Rings
4	NAG	A	1	4,2	-	2/6/23/26	0/1/1/1
4	NAG	A	2	4	-	2/6/23/26	0/1/1/1
4	BMA	A	3	4	-	0/2/19/22	0/1/1/1
5	NAG	D	1	5,2	-	0/6/23/26	0/1/1/1
5	NAG	D	2	5	-	0/6/23/26	0/1/1/1
5	BMA	D	3	5	-	0/2/19/22	0/1/1/1
6	NAG	E	1	6,2	-	0/6/23/26	0/1/1/1
6	NAG	E	2	6	-	0/6/23/26	0/1/1/1
6	BMA	E	3	6	-	2/2/19/22	0/1/1/1
6	MAN	E	4	6	-	0/2/19/22	0/1/1/1
6	MAN	E	5	6	-	0/2/19/22	0/1/1/1
7	NAG	F	1	7,2	-	3/6/23/26	0/1/1/1
7	NAG	F	2	7	-	3/6/23/26	0/1/1/1
7	BMA	F	3	7	-	0/2/19/22	0/1/1/1
7	NAG	G	1	7,2	-	4/6/23/26	0/1/1/1
7	NAG	G	2	7	-	2/6/23/26	0/1/1/1

Continued on next page...

*Continued from previous page...*

Mol	Type	Chain	Res	Link	Chirals	Torsions	Rings
7	BMA	G	3	7	-	0/2/19/22	0/1/1/1
6	NAG	H	1	6,2	-	4/6/23/26	0/1/1/1
6	NAG	H	2	6	-	3/6/23/26	0/1/1/1
6	BMA	H	3	6	-	2/2/19/22	0/1/1/1
6	MAN	H	4	6	-	0/2/19/22	0/1/1/1
6	MAN	H	5	6	-	0/2/19/22	0/1/1/1
6	NAG	I	1	6,2	-	3/6/23/26	0/1/1/1
6	NAG	I	2	6	-	0/6/23/26	0/1/1/1
6	BMA	I	3	6	-	2/2/19/22	0/1/1/1
6	MAN	I	4	6	-	0/2/19/22	0/1/1/1
6	MAN	I	5	6	-	0/2/19/22	0/1/1/1

There are no bond length outliers.

All (16) bond angle outliers are listed below:

Mol	Chain	Res	Type	Atoms	Z	Observed(°)	Ideal(°)
6	H	2	NAG	C1-O5-C5	3.94	117.47	112.19
7	F	2	NAG	C1-O5-C5	3.88	117.38	112.19
6	H	3	BMA	C1-O5-C5	3.80	117.27	112.19
5	D	1	NAG	C1-O5-C5	3.19	116.47	112.19
6	H	1	NAG	C1-O5-C5	3.17	116.44	112.19
4	A	2	NAG	O5-C1-C2	-3.13	106.45	111.29
6	E	3	BMA	C1-C2-C3	2.87	113.82	109.64
6	H	3	BMA	C1-C2-C3	2.43	113.19	109.64
4	A	3	BMA	C1-O5-C5	2.39	115.39	112.19
6	H	1	NAG	O4-C4-C5	2.32	115.03	109.32
7	F	1	NAG	O5-C1-C2	-2.26	107.80	111.29
6	E	4	MAN	C1-O5-C5	2.26	115.21	112.19
5	D	2	NAG	O3-C3-C2	-2.18	104.87	109.40
4	A	1	NAG	O4-C4-C5	-2.11	104.13	109.32
4	A	1	NAG	C1-O5-C5	-2.05	109.44	112.19
4	A	2	NAG	C2-N2-C7	2.03	125.62	122.90

There are no chirality outliers.

All (32) torsion outliers are listed below:

Mol	Chain	Res	Type	Atoms
6	I	1	NAG	C1-C2-N2-C7
7	F	1	NAG	C3-C2-N2-C7
7	F	2	NAG	C1-C2-N2-C7

*Continued on next page...*



*Continued from previous page...*

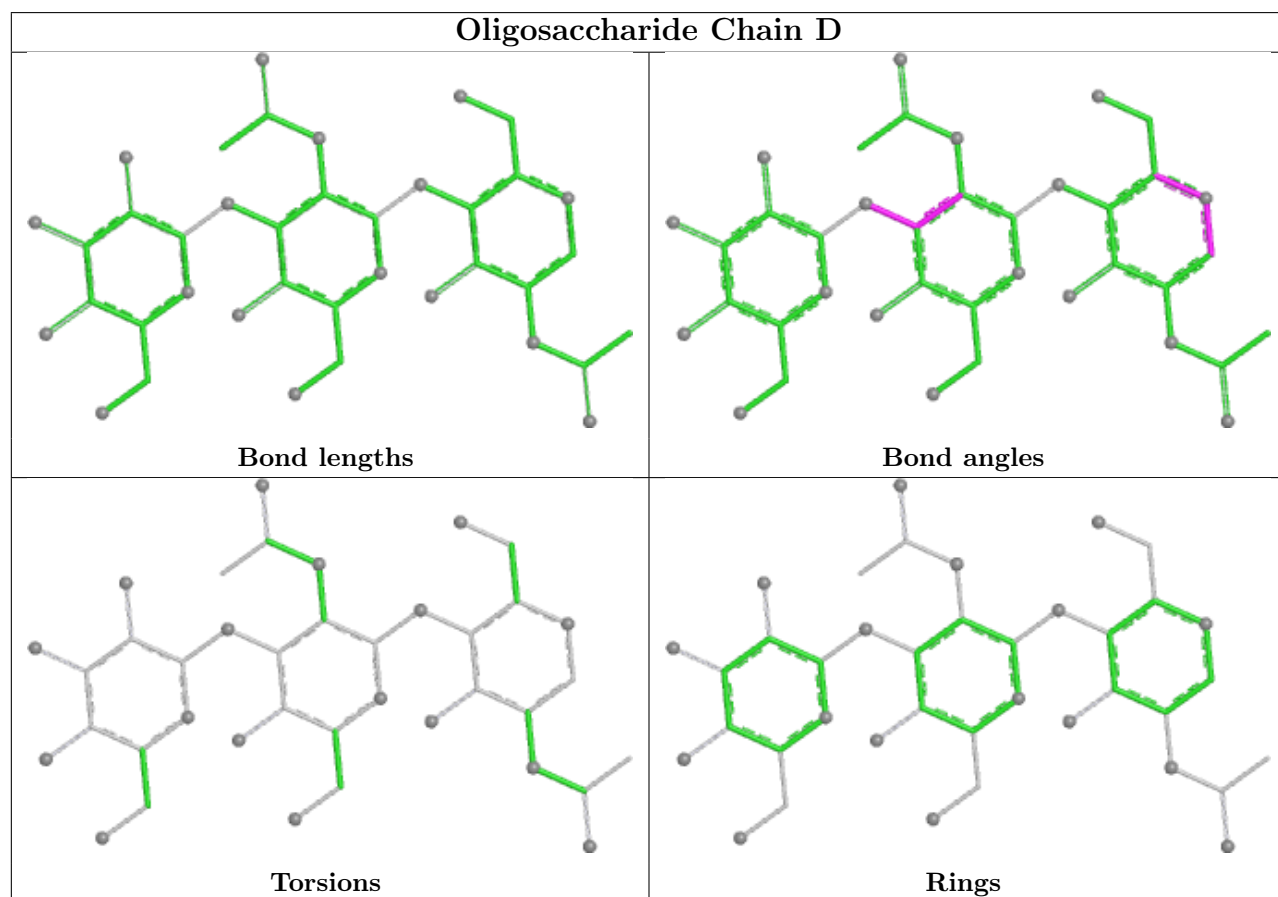
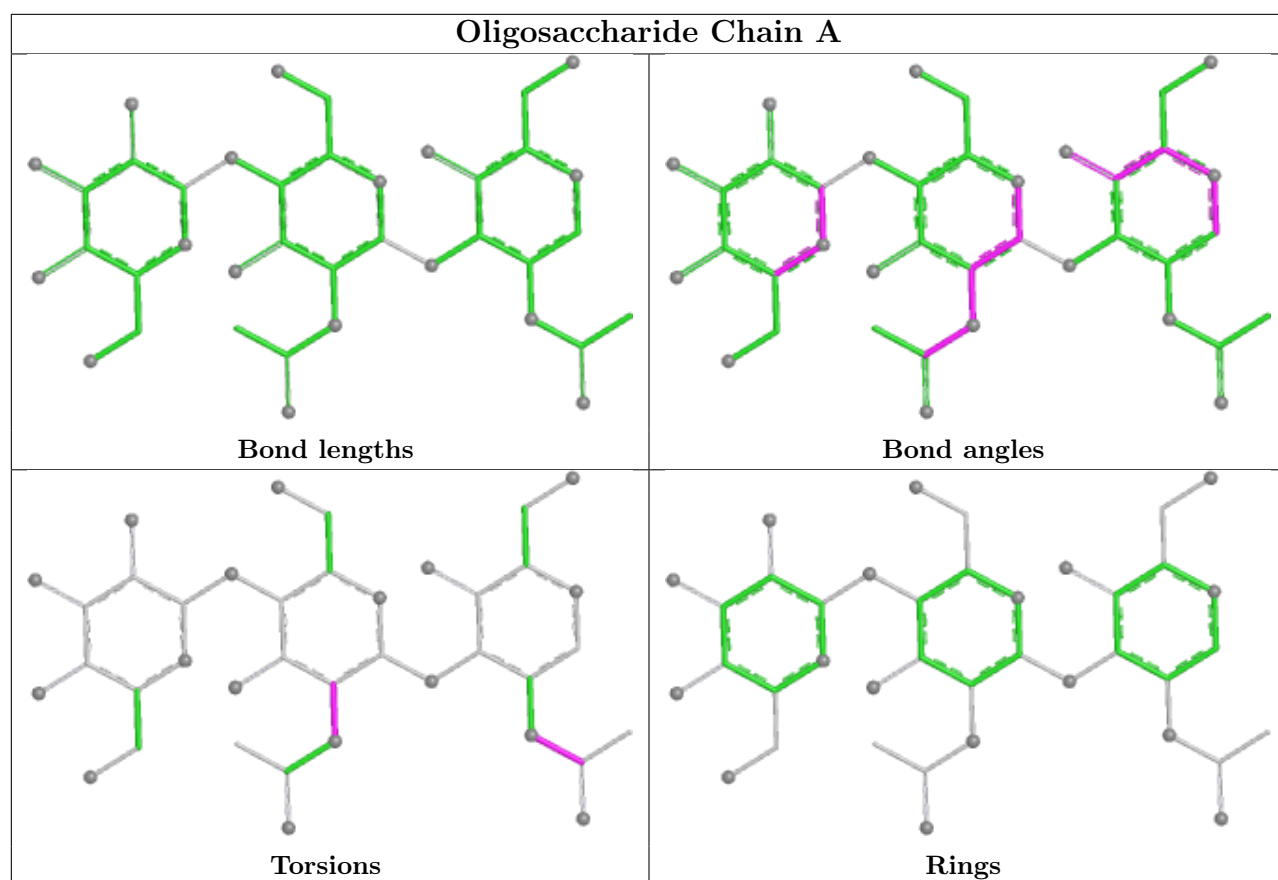
Mol	Chain	Res	Type	Atoms
6	H	1	NAG	C8-C7-N2-C2
6	H	1	NAG	O7-C7-N2-C2
6	I	1	NAG	C8-C7-N2-C2
7	F	1	NAG	C8-C7-N2-C2
7	F	1	NAG	O7-C7-N2-C2
4	A	1	NAG	C8-C7-N2-C2
4	A	1	NAG	O7-C7-N2-C2
6	I	1	NAG	O7-C7-N2-C2
6	H	3	BMA	O5-C5-C6-O6
6	H	3	BMA	C4-C5-C6-O6
7	G	1	NAG	C8-C7-N2-C2
6	E	3	BMA	C4-C5-C6-O6
6	I	3	BMA	C4-C5-C6-O6
6	E	3	BMA	O5-C5-C6-O6
7	G	1	NAG	O7-C7-N2-C2
6	I	3	BMA	O5-C5-C6-O6
4	A	2	NAG	C3-C2-N2-C7
6	H	1	NAG	C3-C2-N2-C7
6	H	2	NAG	C3-C2-N2-C7
7	F	2	NAG	C8-C7-N2-C2
4	A	2	NAG	C1-C2-N2-C7
6	H	1	NAG	C1-C2-N2-C7
7	G	1	NAG	C1-C2-N2-C7
7	F	2	NAG	O7-C7-N2-C2
7	G	2	NAG	C8-C7-N2-C2
6	H	2	NAG	C8-C7-N2-C2
6	H	2	NAG	O7-C7-N2-C2
7	G	1	NAG	C4-C5-C6-O6
7	G	2	NAG	O7-C7-N2-C2

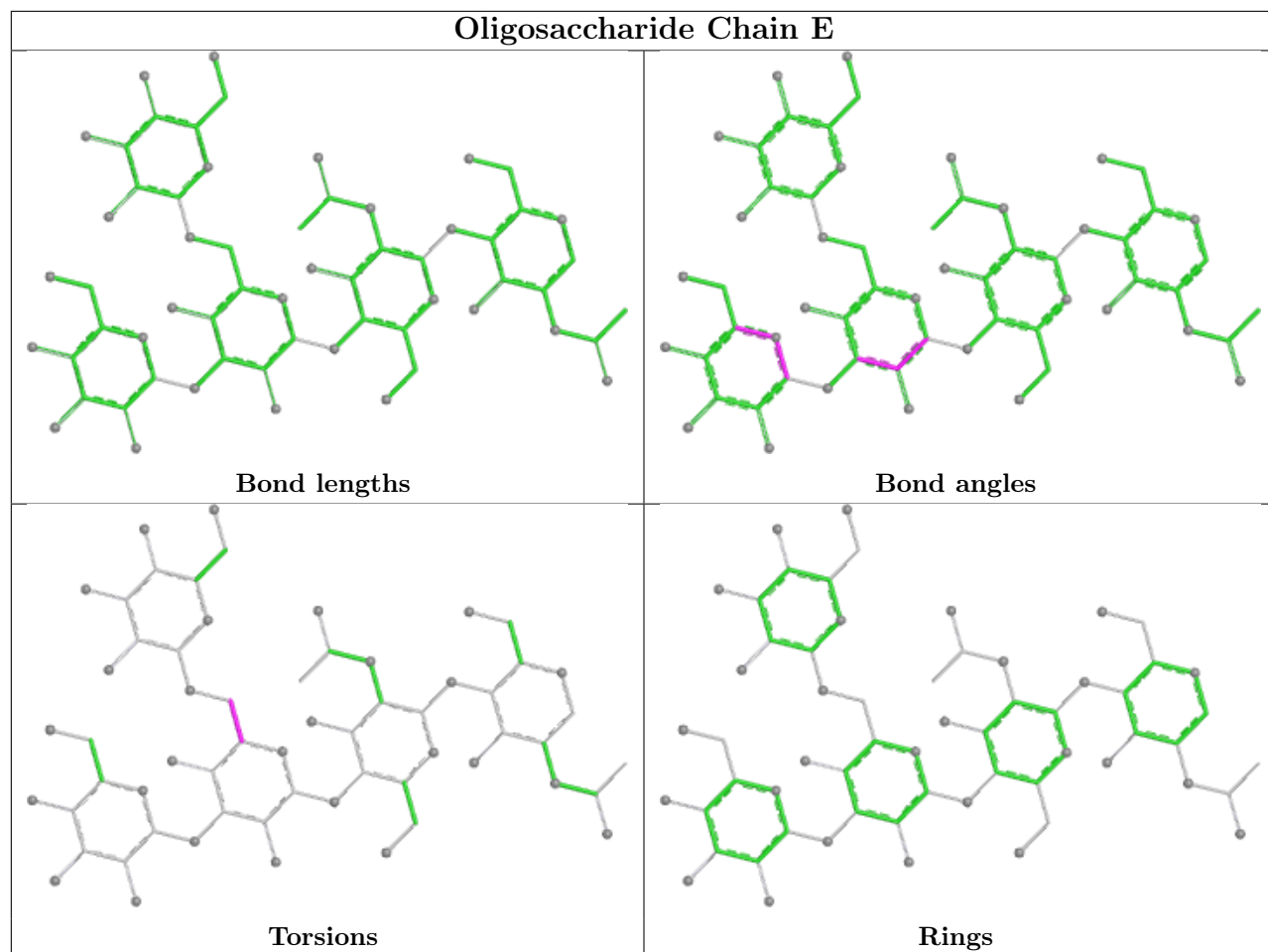
There are no ring outliers.

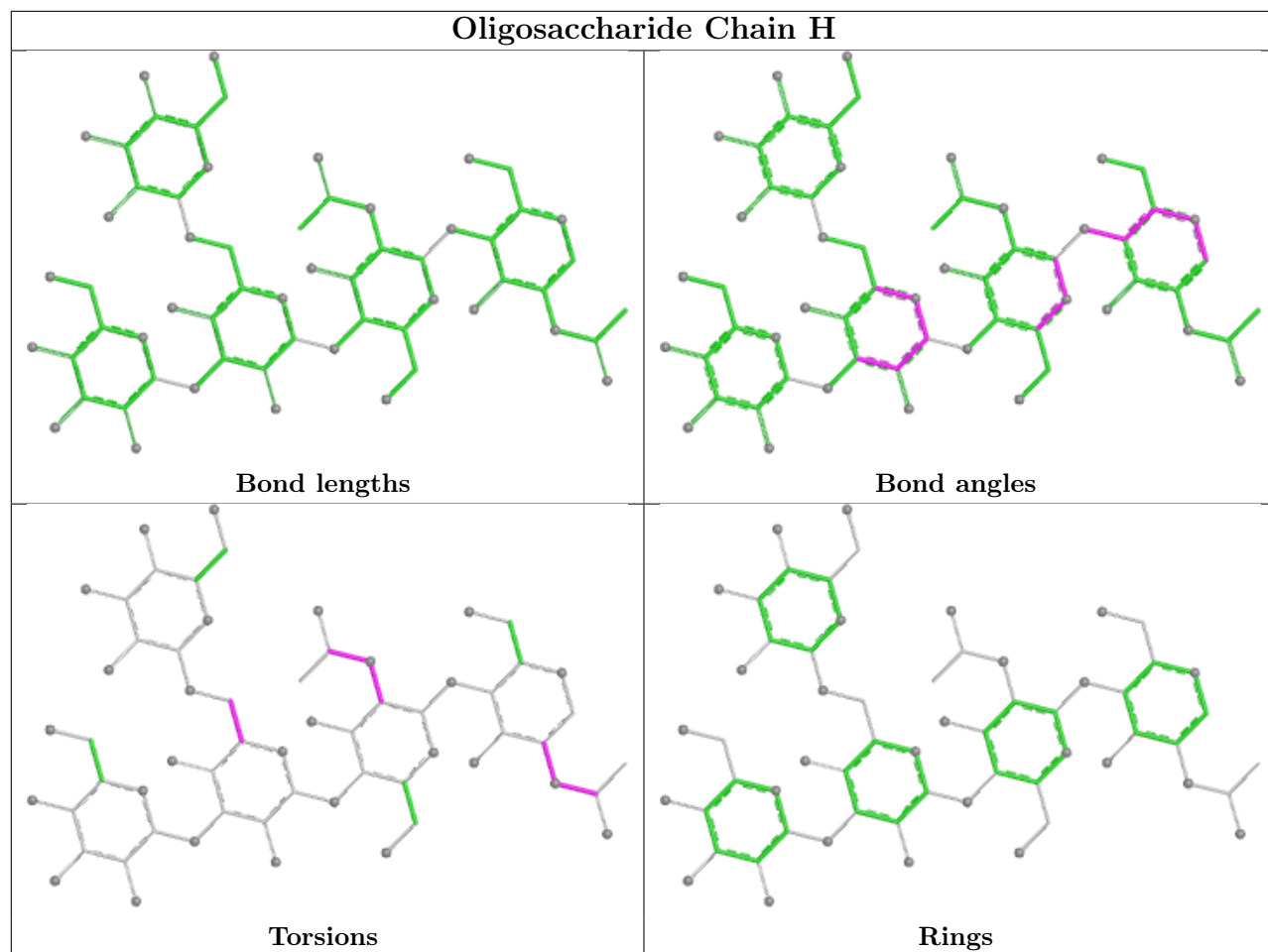
2 monomers are involved in 1 short contact:

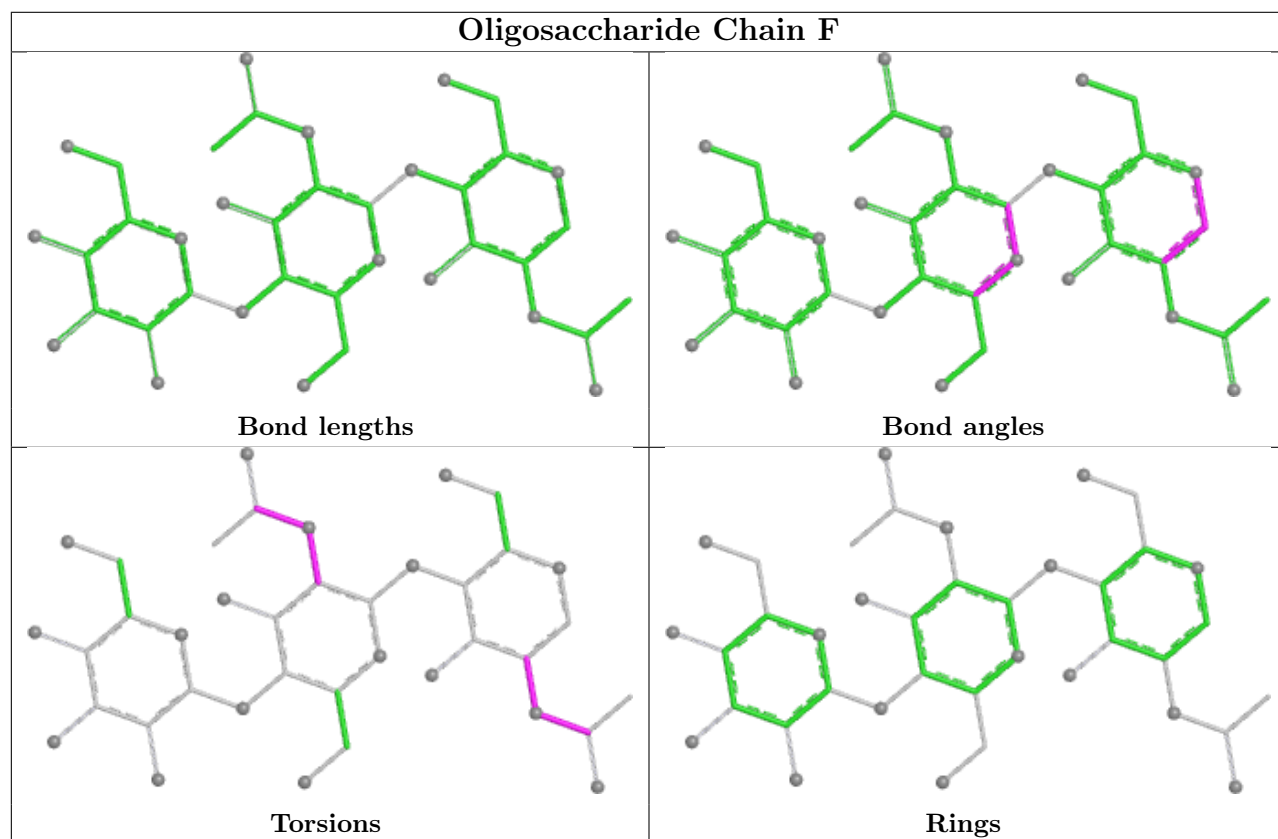
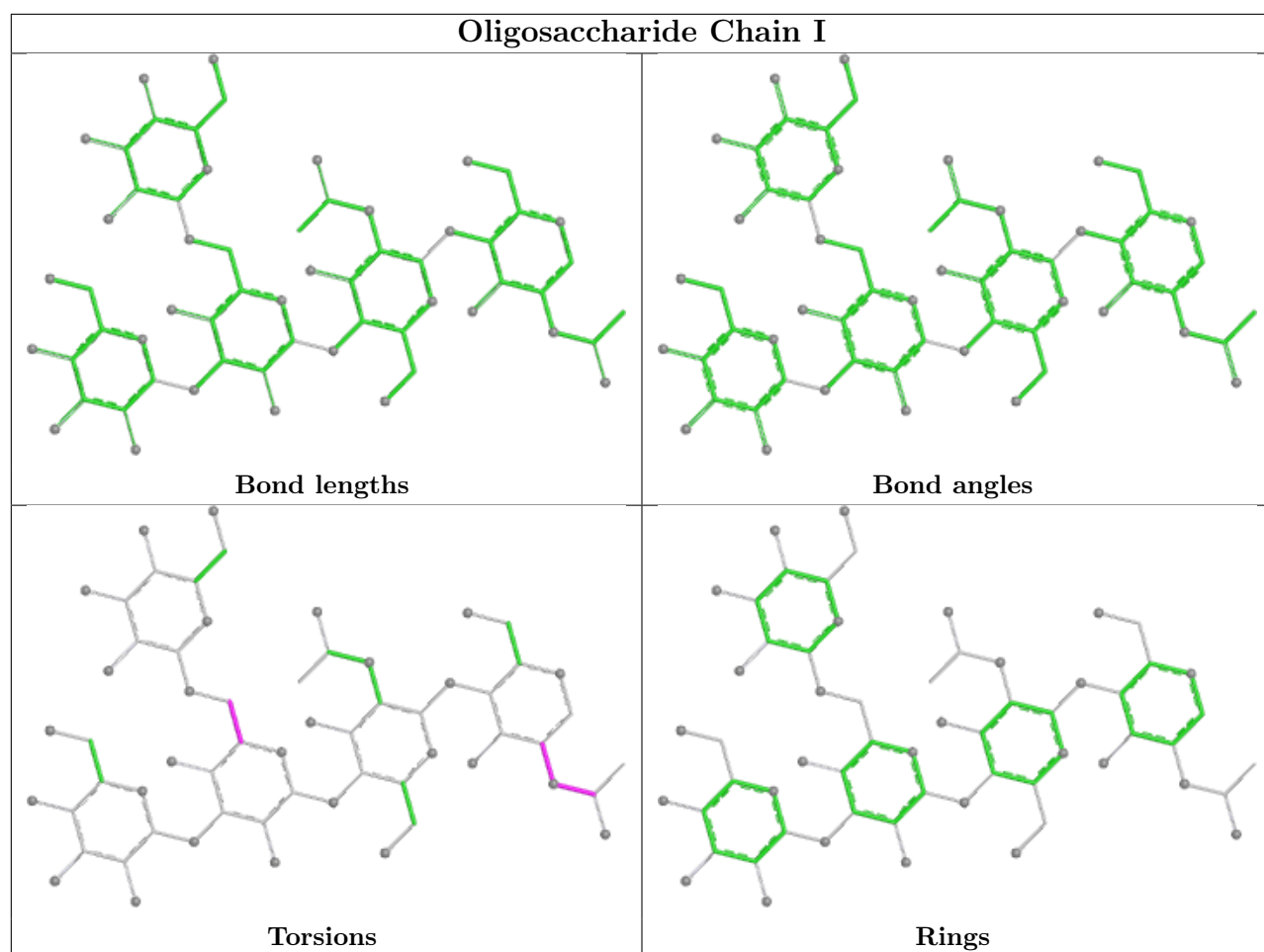
Mol	Chain	Res	Type	Clashes	Symm-Clashes
6	H	1	NAG	1	0
6	H	2	NAG	1	0

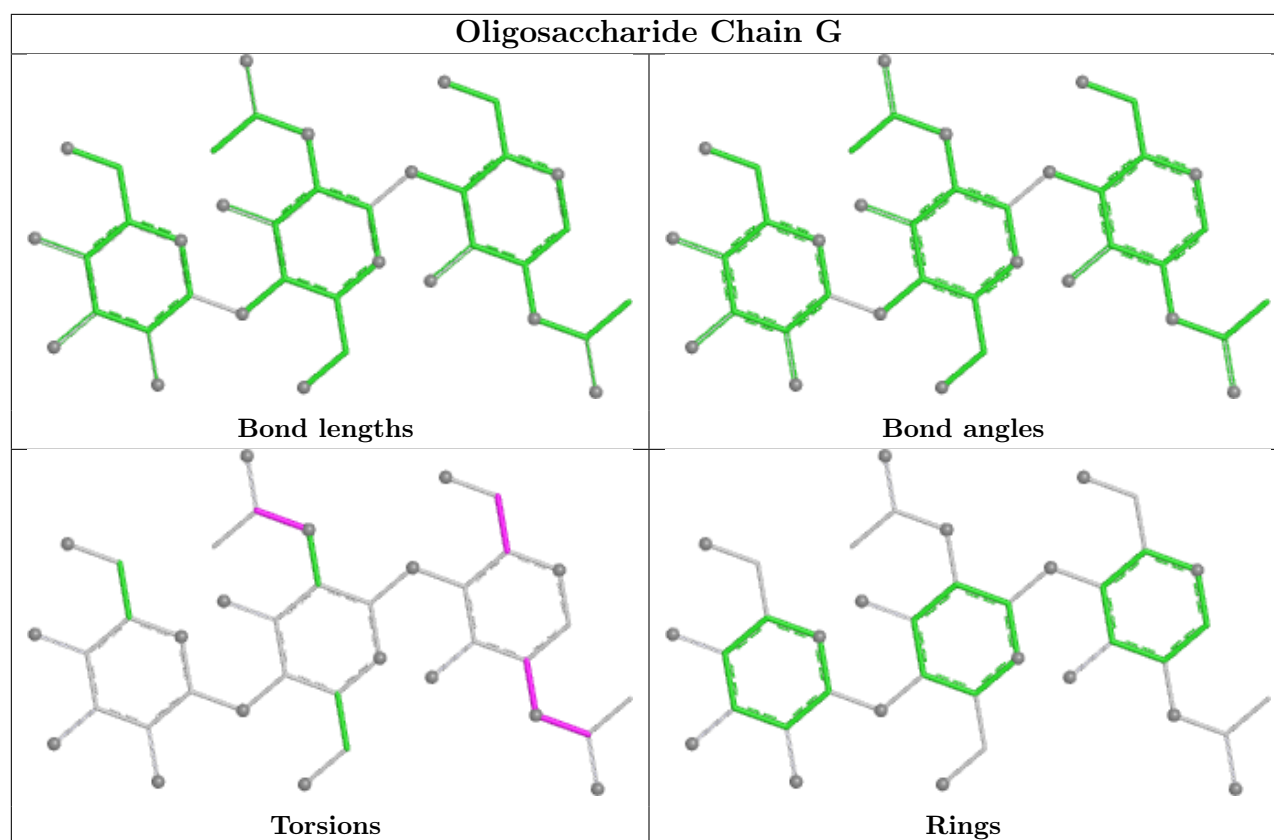
The following is a two-dimensional graphical depiction of Mogul quality analysis of bond lengths, bond angles, torsion angles, and ring geometry for oligosaccharide.











## 5.6 Ligand geometry [i](#)

Of 26 ligands modelled in this entry, 20 are monoatomic - leaving 6 for Mogul analysis.

In the following table, the Counts columns list the number of bonds (or angles) for which Mogul statistics could be retrieved, the number of bonds (or angles) that are observed in the model and the number of bonds (or angles) that are defined in the Chemical Component Dictionary. The Link column lists molecule types, if any, to which the group is linked. The Z score for a bond length (or angle) is the number of standard deviations the observed value is removed from the expected value. A bond length (or angle) with  $|Z| > 2$  is considered an outlier worth inspection. RMSZ is the root-mean-square of all Z scores of the bond lengths (or angles).

Mol	Type	Chain	Res	Link	Bond lengths			Bond angles		
					Counts	RMSZ	$\# Z  > 2$	Counts	RMSZ	$\# Z  > 2$
9	A2G	B	4705	2	14,14,15	0.41	0	17,19,21	0.58	0
9	A2G	B	4704	2	14,14,15	0.43	0	17,19,21	0.89	1 (5%)
8	NAG	B	4701	2	14,14,15	0.41	0	17,19,21	0.96	1 (5%)
9	A2G	B	4703	-	14,14,15	0.41	0	17,19,21	2.53	3 (17%)
8	NAG	B	4702	2	14,14,15	0.54	0	17,19,21	1.36	3 (17%)
9	A2G	B	4706	2	14,14,15	0.45	0	17,19,21	0.90	1 (5%)

In the following table, the Chirals column lists the number of chiral outliers, the number of chiral

centers analysed, the number of these observed in the model and the number defined in the Chemical Component Dictionary. Similar counts are reported in the Torsion and Rings columns. '-' means no outliers of that kind were identified.

Mol	Type	Chain	Res	Link	Chirals	Torsions	Rings
9	A2G	B	4705	2	-	1/6/23/26	0/1/1/1
9	A2G	B	4704	2	-	2/6/23/26	0/1/1/1
8	NAG	B	4701	2	-	0/6/23/26	0/1/1/1
9	A2G	B	4703	-	-	0/6/23/26	0/1/1/1
8	NAG	B	4702	2	-	0/6/23/26	0/1/1/1
9	A2G	B	4706	2	-	2/6/23/26	0/1/1/1

There are no bond length outliers.

All (9) bond angle outliers are listed below:

Mol	Chain	Res	Type	Atoms	Z	Observed(°)	Ideal(°)
9	B	4703	A2G	O5-C1-C2	9.28	125.65	111.29
8	B	4702	NAG	C4-C3-C2	-3.63	105.70	111.02
9	B	4704	A2G	O5-C1-C2	-3.44	105.97	111.29
9	B	4703	A2G	C1-C2-N2	3.42	115.82	110.43
8	B	4702	NAG	O5-C5-C6	3.21	113.91	107.66
9	B	4706	A2G	O5-C1-C2	-3.05	106.57	111.29
9	B	4703	A2G	C1-O5-C5	3.03	116.25	112.19
8	B	4701	NAG	C1-O5-C5	2.76	115.89	112.19
8	B	4702	NAG	C1-O5-C5	-2.12	109.35	112.19

There are no chirality outliers.

All (5) torsion outliers are listed below:

Mol	Chain	Res	Type	Atoms
9	B	4704	A2G	C8-C7-N2-C2
9	B	4705	A2G	O5-C5-C6-O6
9	B	4704	A2G	O7-C7-N2-C2
9	B	4706	A2G	C1-C2-N2-C7
9	B	4706	A2G	C3-C2-N2-C7

There are no ring outliers.

1 monomer is involved in 6 short contacts:

Mol	Chain	Res	Type	Clashes	Symm-Clashes
9	B	4703	A2G	6	0

## 5.7 Other polymers [i](#)

There are no such residues in this entry.

## 5.8 Polymer linkage issues [i](#)

There are no chain breaks in this entry.



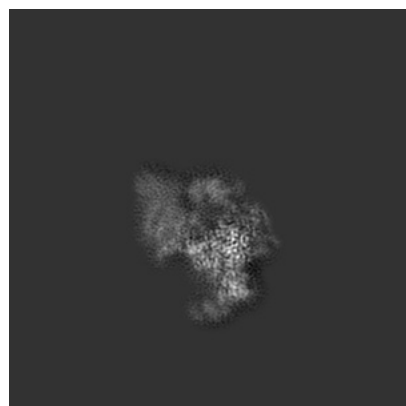
## 6 Map visualisation [i](#)

This section contains visualisations of the EMDB entry EMD-36699. These allow visual inspection of the internal detail of the map and identification of artifacts.

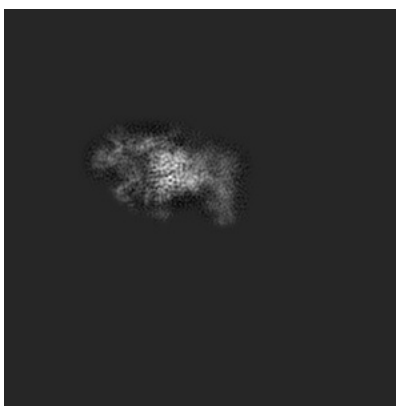
Images derived from a raw map, generated by summing the deposited half-maps, are presented below the corresponding image components of the primary map to allow further visual inspection and comparison with those of the primary map.

### 6.1 Orthogonal projections [i](#)

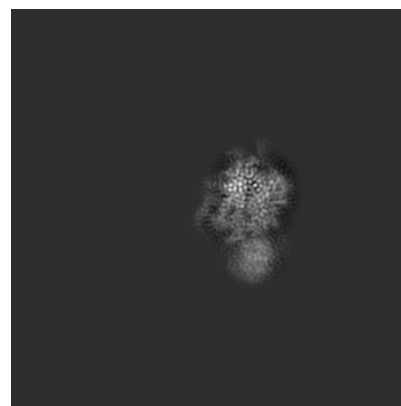
#### 6.1.1 Primary map



X

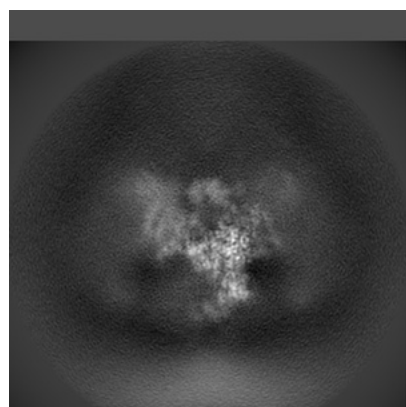


Y

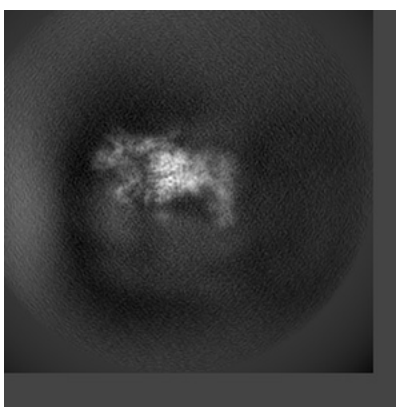


Z

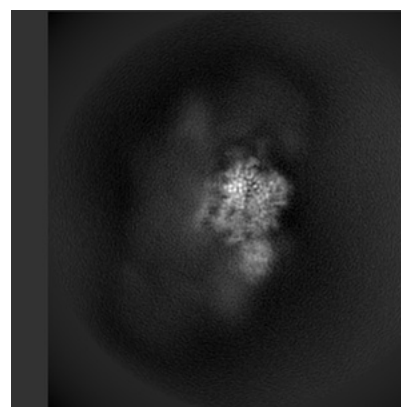
#### 6.1.2 Raw map



X



Y

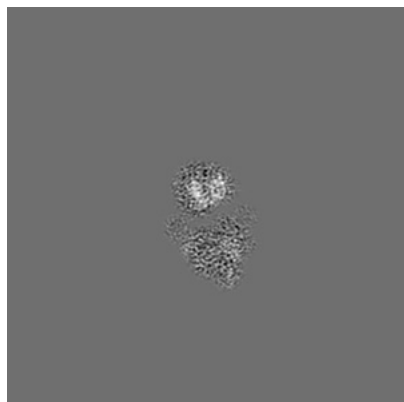


Z

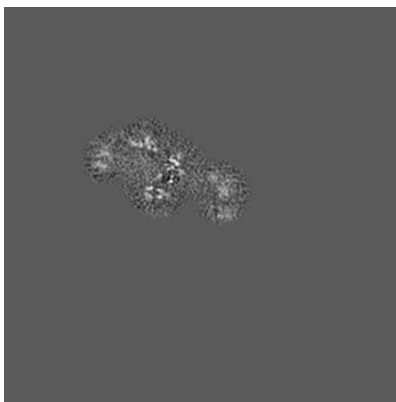
The images above show the map projected in three orthogonal directions.

## 6.2 Central slices [i](#)

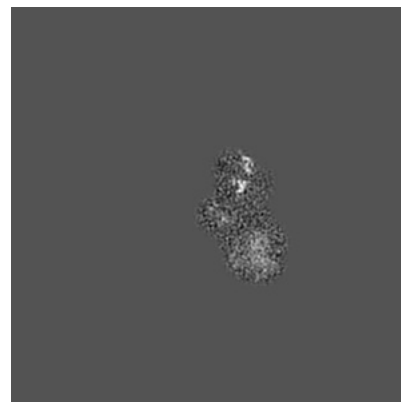
### 6.2.1 Primary map



X Index: 130

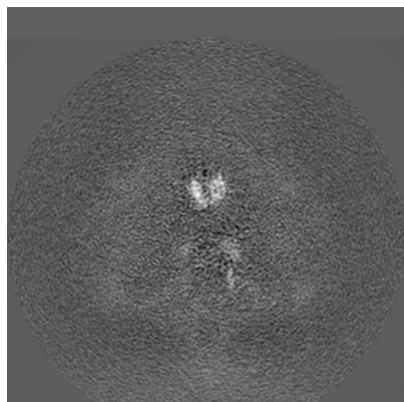


Y Index: 130

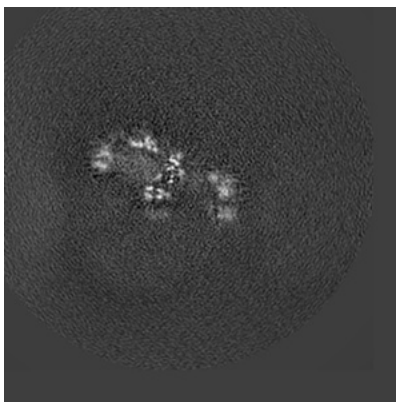


Z Index: 130

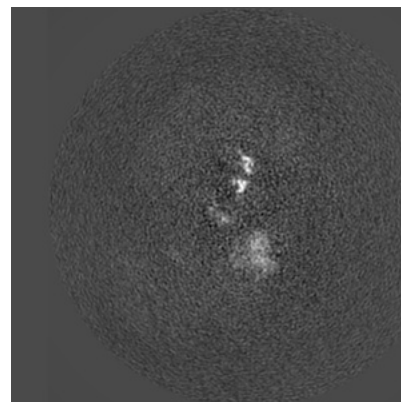
### 6.2.2 Raw map



X Index: 130



Y Index: 130

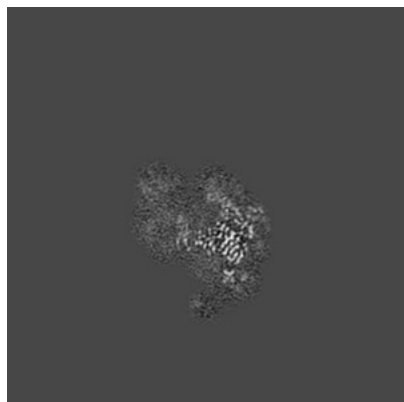


Z Index: 130

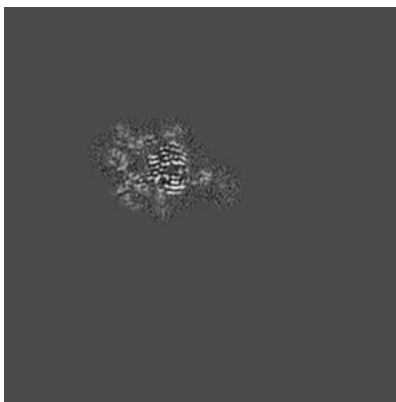
The images above show central slices of the map in three orthogonal directions.

## 6.3 Largest variance slices [i](#)

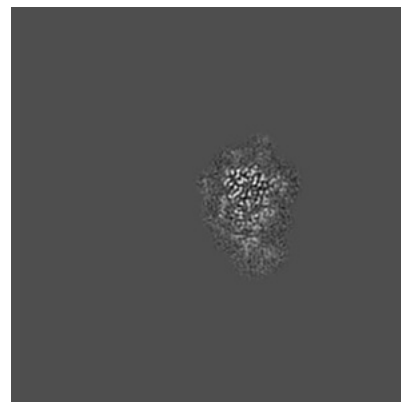
### 6.3.1 Primary map



X Index: 149

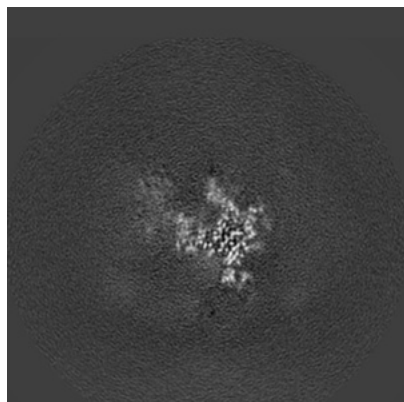


Y Index: 145

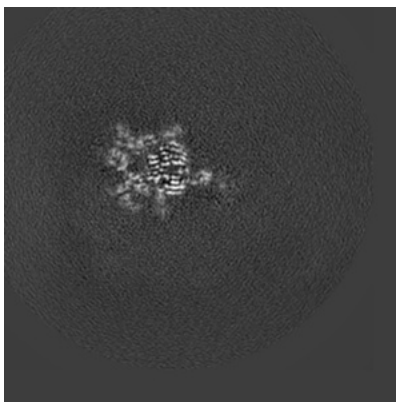


Z Index: 106

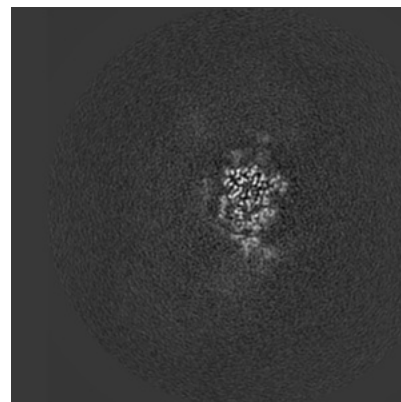
### 6.3.2 Raw map



X Index: 148



Y Index: 145

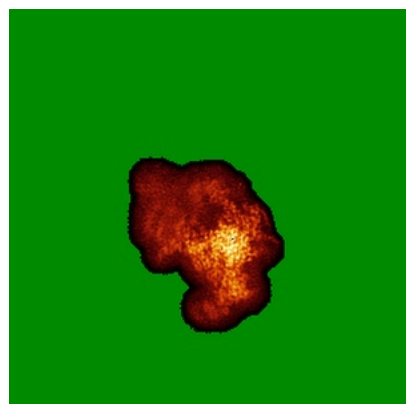


Z Index: 106

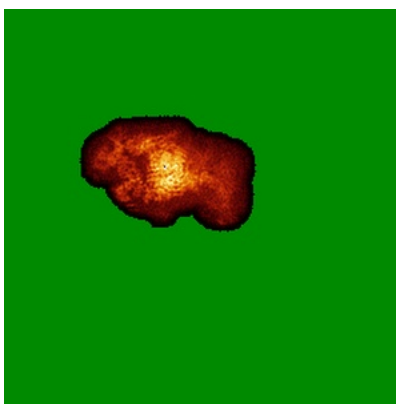
The images above show the largest variance slices of the map in three orthogonal directions.

## 6.4 Orthogonal standard-deviation projections (False-color) [i](#)

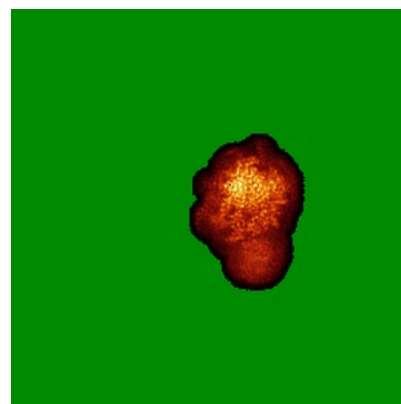
### 6.4.1 Primary map



X

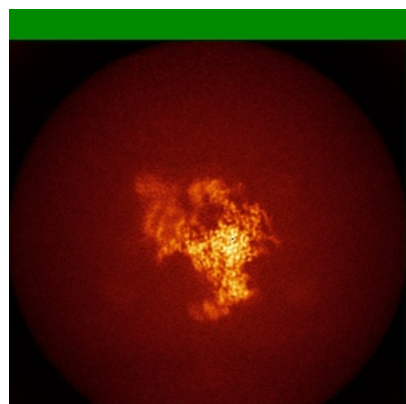


Y

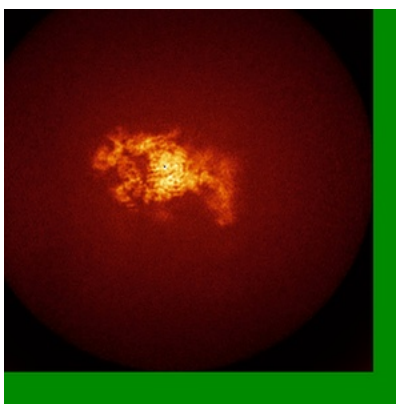


Z

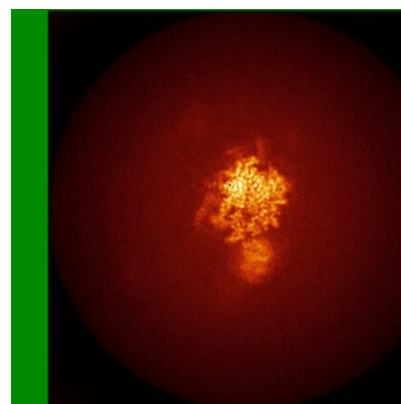
### 6.4.2 Raw map



X



Y



Z

The images above show the map standard deviation projections with false color in three orthogonal directions. Minimum values are shown in green, max in blue, and dark to light orange shades represent small to large values respectively.

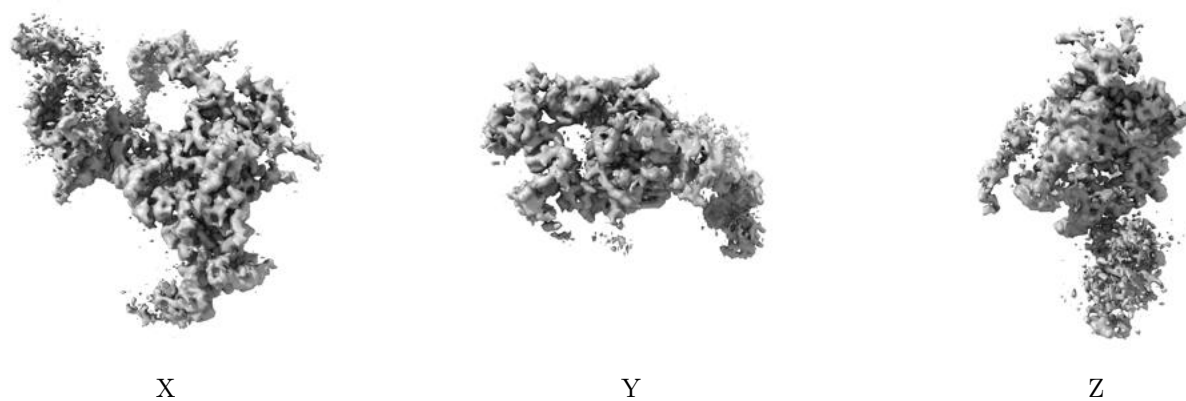
## 6.5 Orthogonal surface views [i](#)

### 6.5.1 Primary map



The images above show the 3D surface view of the map at the recommended contour level 0.0271. These images, in conjunction with the slice images, may facilitate assessment of whether an appropriate contour level has been provided.

### 6.5.2 Raw map



These images show the 3D surface of the raw map. The raw map's contour level was selected so that its surface encloses the same volume as the primary map does at its recommended contour level.

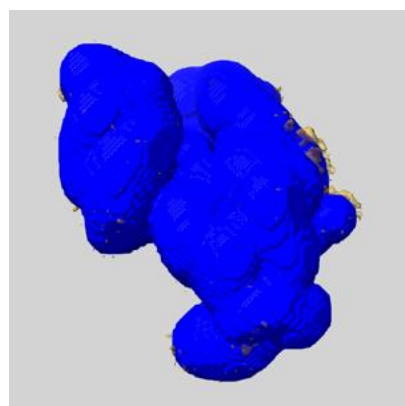
## 6.6 Mask visualisation [i](#)

This section shows the 3D surface view of the primary map at 50% transparency overlaid with the specified mask at 0% transparency

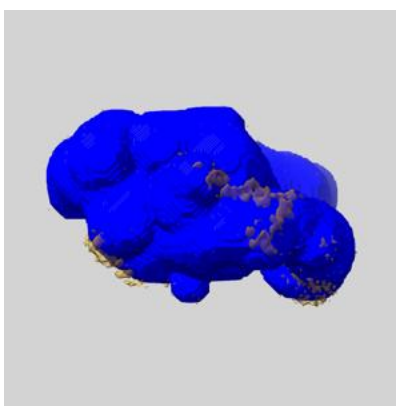
A mask typically either:

- Encompasses the whole structure
- Separates out a domain, a functional unit, a monomer or an area of interest from a larger structure

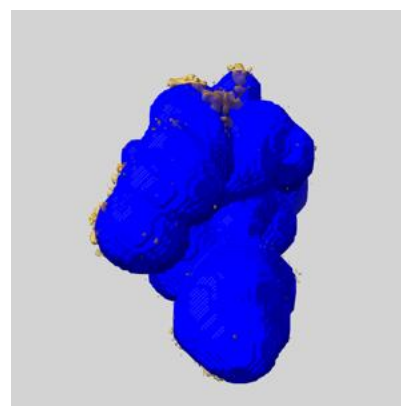
### 6.6.1 emd\_36699\_msk\_1.map [i](#)



X



Y

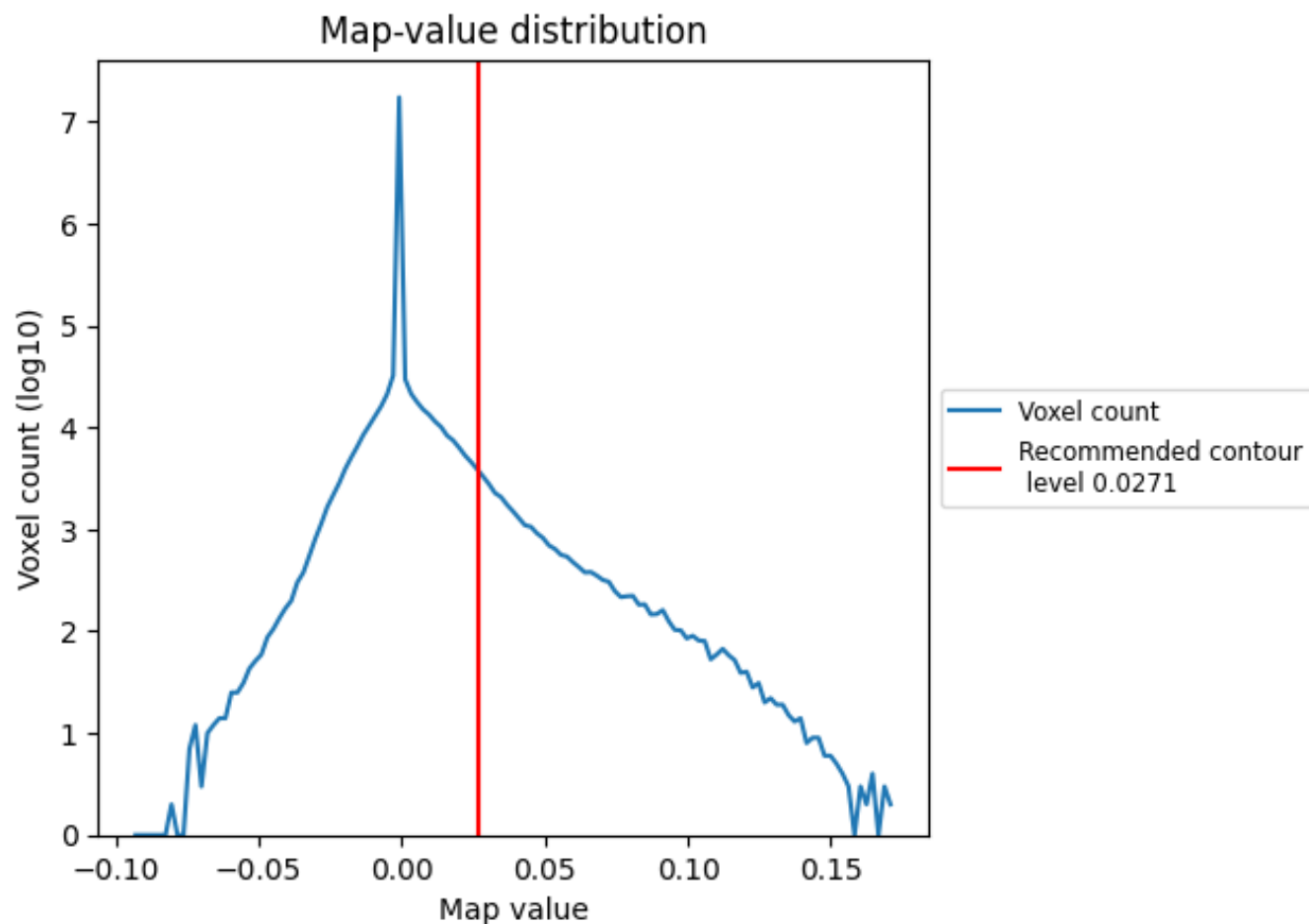


Z

## 7 Map analysis [i](#)

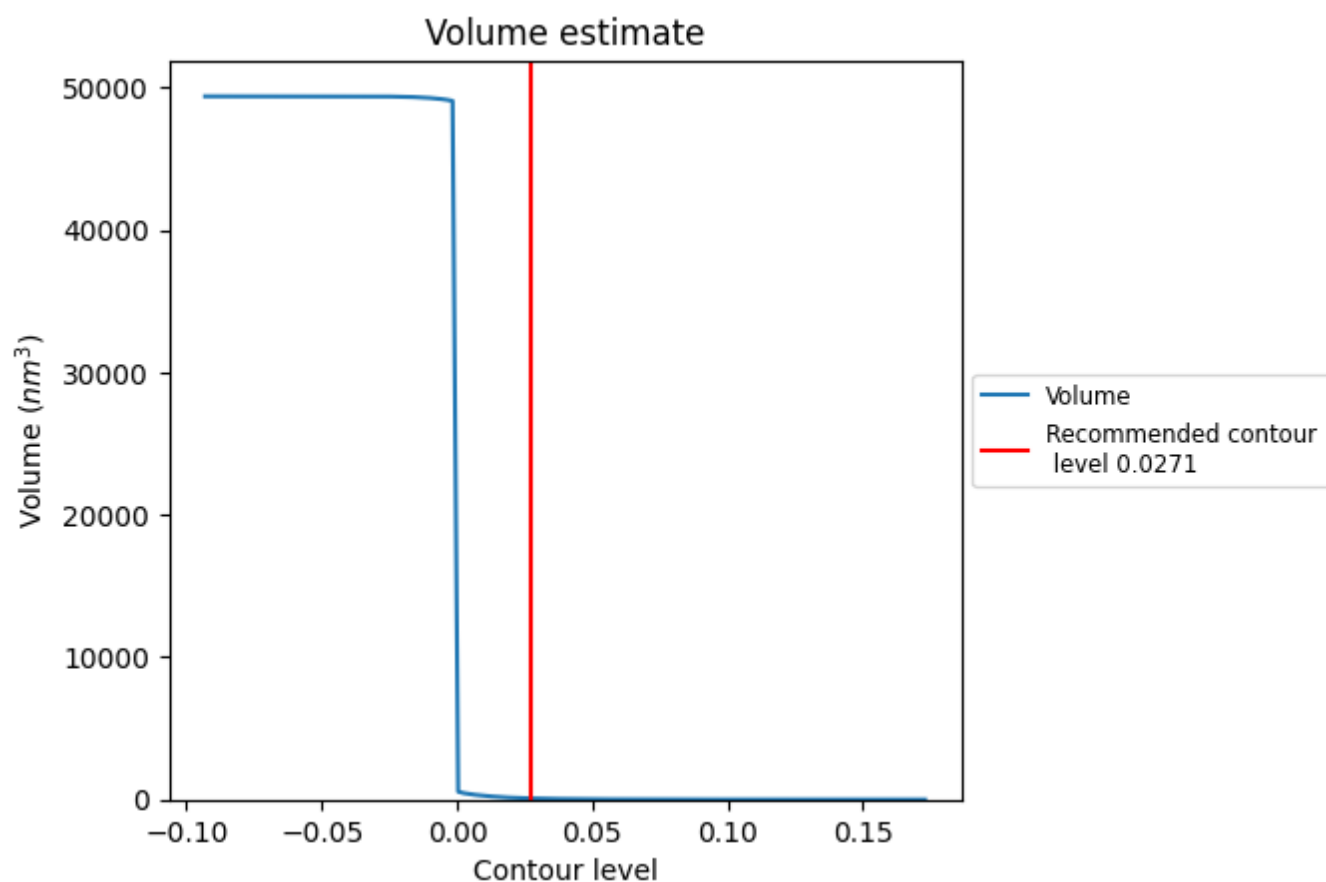
This section contains the results of statistical analysis of the map.

### 7.1 Map-value distribution [i](#)



The map-value distribution is plotted in 128 intervals along the x-axis. The y-axis is logarithmic. A spike in this graph at zero usually indicates that the volume has been masked.

## 7.2 Volume estimate [i](#)

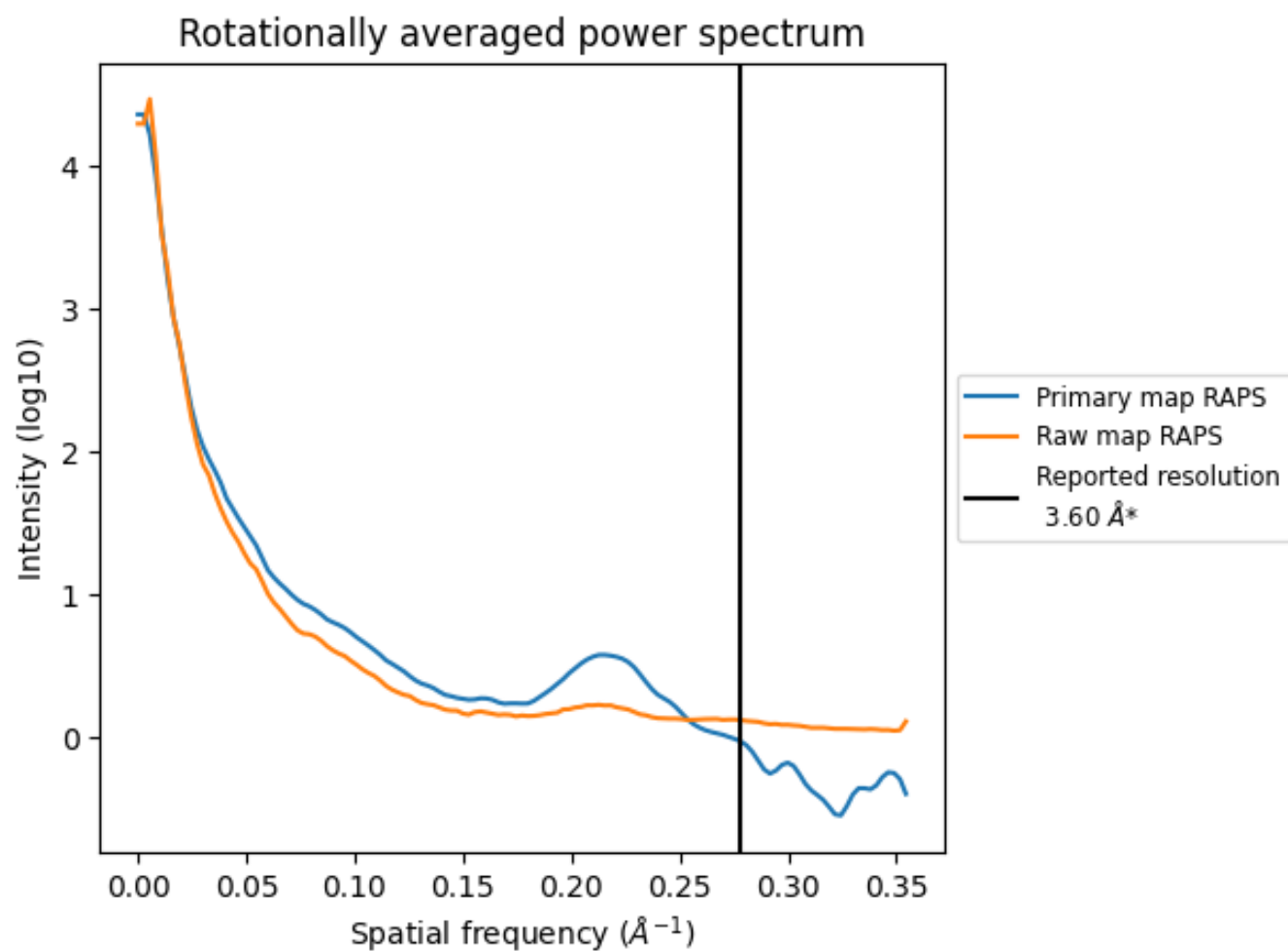


The volume at the recommended contour level is 82 nm<sup>3</sup>; this corresponds to an approximate mass of 74 kDa.

The volume estimate graph shows how the enclosed volume varies with the contour level. The recommended contour level is shown as a vertical line and the intersection between the line and the curve gives the volume of the enclosed surface at the given level.



### 7.3 Rotationally averaged power spectrum ⓘ

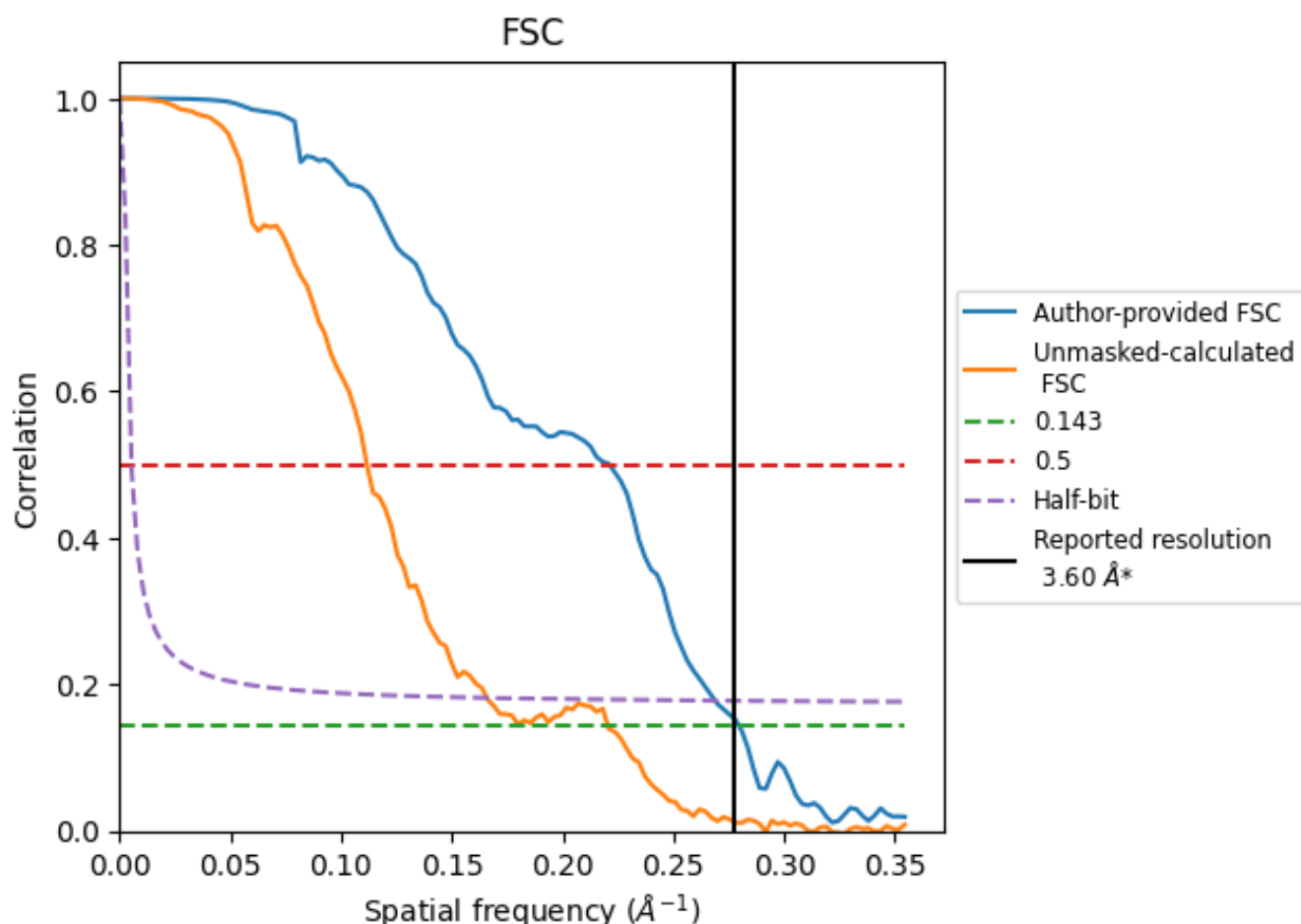


\*Reported resolution corresponds to spatial frequency of 0.278 Å<sup>-1</sup>

## 8 Fourier-Shell correlation [i](#)

Fourier-Shell Correlation (FSC) is the most commonly used method to estimate the resolution of single-particle and subtomogram-averaged maps. The shape of the curve depends on the imposed symmetry, mask and whether or not the two 3D reconstructions used were processed from a common reference. The reported resolution is shown as a black line. A curve is displayed for the half-bit criterion in addition to lines showing the 0.143 gold standard cut-off and 0.5 cut-off.

### 8.1 FSC [i](#)



\*Reported resolution corresponds to spatial frequency of 0.278 Å<sup>-1</sup>

## 8.2 Resolution estimates [i](#)

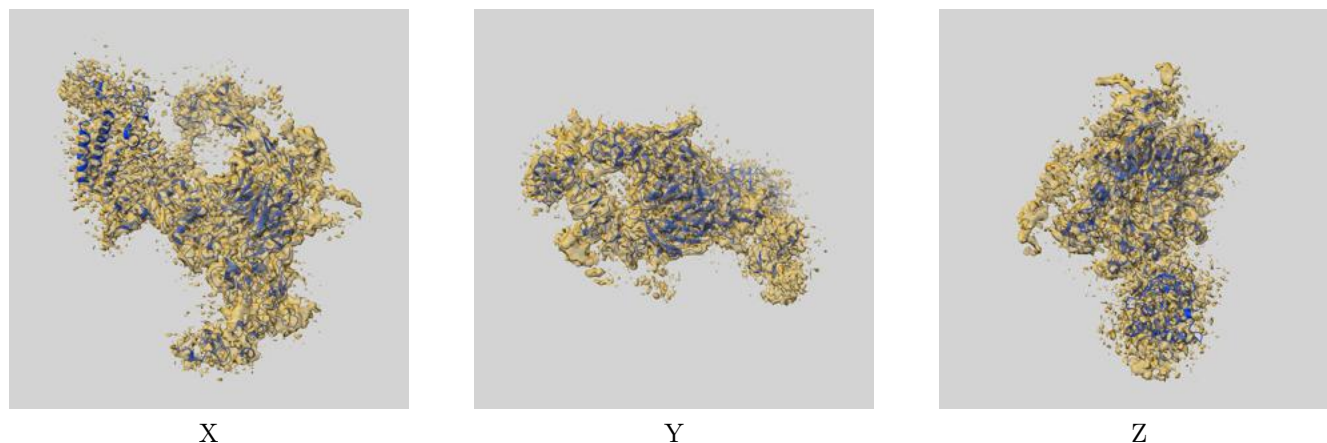
Resolution estimate (Å)	Estimation criterion (FSC cut-off)		
	0.143	0.5	Half-bit
Reported by author	3.60	-	-
Author-provided FSC curve	3.58	4.52	3.72
Unmasked-calculated*	4.54	8.96	6.03

\*Resolution estimate based on FSC curve calculated by comparison of deposited half-maps. The value from deposited half-maps intersecting FSC 0.143 CUT-OFF 4.54 differs from the reported value 3.6 by more than 10 %

## 9 Map-model fit [i](#)

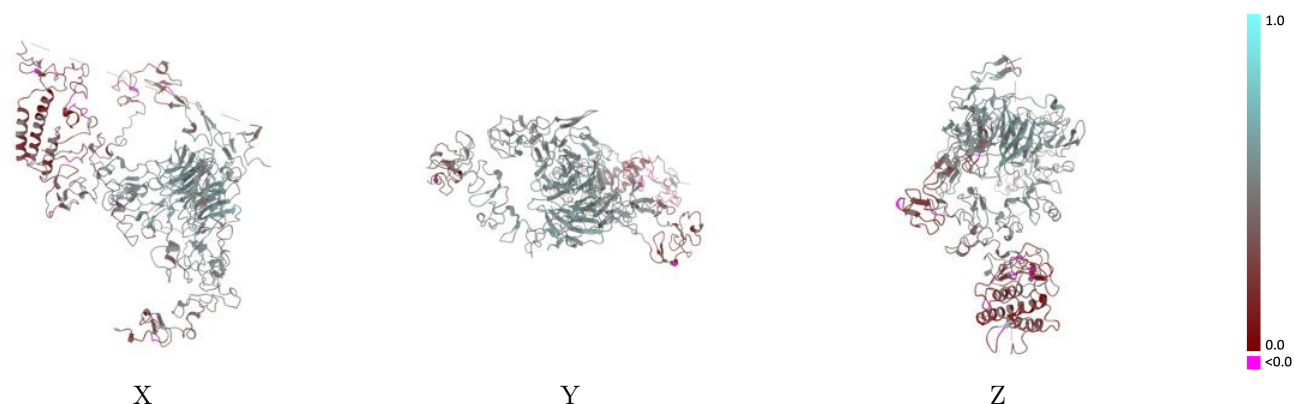
This section contains information regarding the fit between EMDB map EMD-36699 and PDB model 8JXF. Per-residue inclusion information can be found in section [3](#) on page [8](#).

### 9.1 Map-model overlay [i](#)



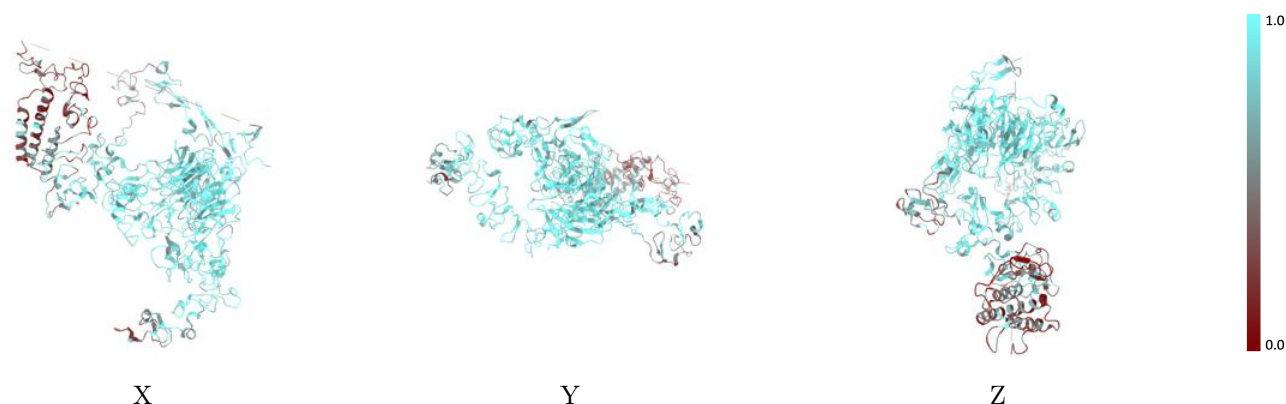
The images above show the 3D surface view of the map at the recommended contour level 0.0271 at 50% transparency in yellow overlaid with a ribbon representation of the model coloured in blue. These images allow for the visual assessment of the quality of fit between the atomic model and the map.

## 9.2 Q-score mapped to coordinate model [i](#)



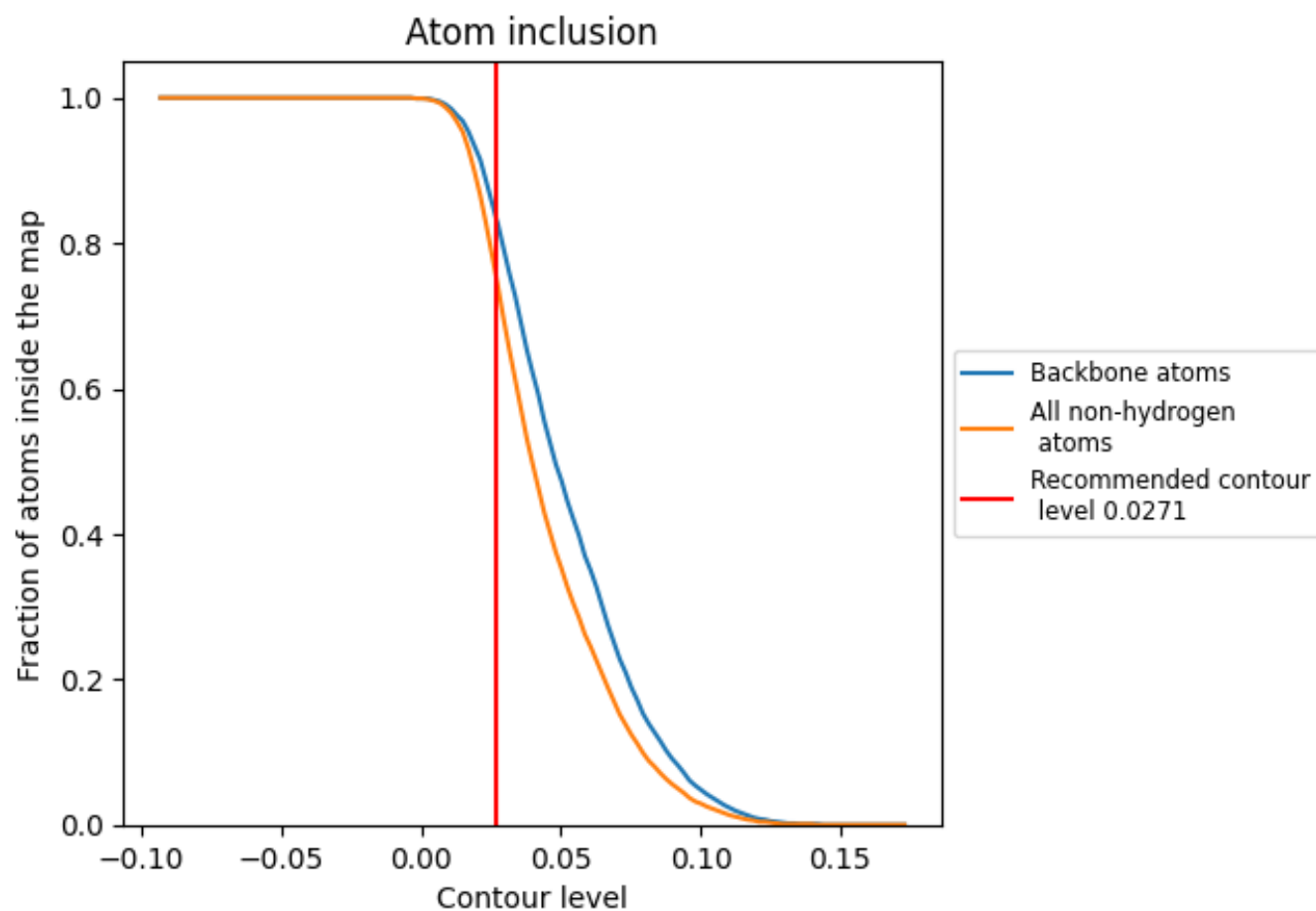
The images above show the model with each residue coloured according to its Q-score. This shows their resolvability in the map with higher Q-score values reflecting better resolvability. Please note: Q-score is calculating the resolvability of atoms, and thus high values are only expected at resolutions at which atoms can be resolved. Low Q-score values may therefore be expected for many entries.

## 9.3 Atom inclusion mapped to coordinate model [i](#)



The images above show the model with each residue coloured according to its atom inclusion. This shows to what extent they are inside the map at the recommended contour level (0.0271).

## 9.4 Atom inclusion [i](#)



At the recommended contour level, 83% of all backbone atoms, 75% of all non-hydrogen atoms, are inside the map.

9.5 Map-model fit summary ⓘ

The table lists the average atom inclusion at the recommended contour level (0.0271) and Q-score for the entire model and for each chain.

Chain	Atom inclusion	Q-score
All	<div></div> 0.7510	<div></div> 0.4440
A	<div></div> 0.6410	<div></div> 0.3410
B	<div></div> 0.7770	<div></div> 0.4570
C	<div></div> 0.4080	<div></div> 0.2680
D	<div></div> 0.6920	<div></div> 0.4270
E	<div></div> 0.7870	<div></div> 0.4840
F	<div></div> 0.4620	<div></div> 0.3860
G	<div></div> 0.5380	<div></div> 0.4950
H	<div></div> 0.7050	<div></div> 0.3520
I	<div></div> 0.7380	<div></div> 0.4130
O	<div></div> 1.0000	<div></div> 0.6020

1.0

0.0

<0.0