



## Full wwPDB EM Validation Report ⓘ

May 19, 2025 – 03:58 AM EDT

PDB ID : 7JV5 / pdb\_00007jv5  
EMDB ID : EMD-22493  
Title : Cryo-EM structure of SKF-81297-bound dopamine receptor 1 in complex with Gs protein  
Authors : Zhuang, Y.; Xu, P.; Mao, C.; Wang, L.; Krumm, B.; Zhou, X.E.; Huang, S.; Liu, H.; Cheng, X.; Huang, X.-P.; Sheng, D.-D.; Xu, T.; Liu, Y.-F.; Wang, Y.; Guo, J.; Jiang, Y.; Jiang, H.; Melcher, K.; Roth, B.L.; Zhang, Y.; Zhang, C.; Xu, H.E.  
Deposited on : 2020-08-20  
Resolution : 3.00 Å(reported)

This is a Full wwPDB EM Validation Report for a publicly released PDB entry.

We welcome your comments at [validation@mail.wwpdb.org](mailto:validation@mail.wwpdb.org)

A user guide is available at

<https://www.wwpdb.org/validation/2017/EMValidationReportHelp>  
with specific help available everywhere you see the ⓘ symbol.

The types of validation reports are described at

<http://www.wwpdb.org/validation/2017/FAQs#types>.

---

The following versions of software and data (see [references ⓘ](#)) were used in the production of this report:

EMDB validation analysis : 0.0.1.dev118  
Mogul : 2022.3.0, CSD as543be (2022)  
MolProbity : 4-5-2 with Phenix2.0rc1  
buster-report : 1.1.7 (2018)  
Percentile statistics : 20231227.v01 (using entries in the PDB archive December 27th 2023)  
MapQ : 1.9.13  
Ideal geometry (proteins) : Engh & Huber (2001)  
Ideal geometry (DNA, RNA) : Parkinson et al. (1996)  
Validation Pipeline (wwPDB-VP) : 2.43.1

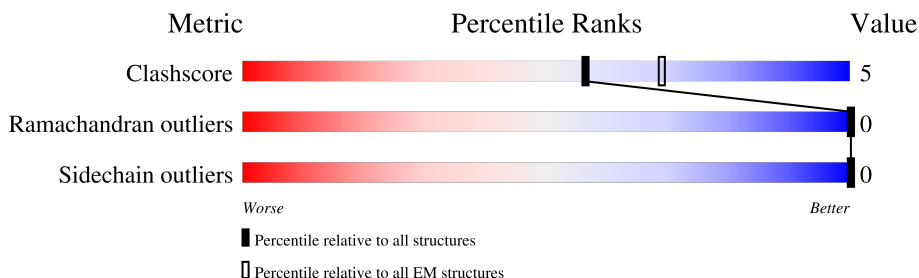
# 1 Overall quality at a glance

The following experimental techniques were used to determine the structure:

*ELECTRON MICROSCOPY*

The reported resolution of this entry is 3.00 Å.

Percentile scores (ranging between 0-100) for global validation metrics of the entry are shown in the following graphic. The table shows the number of entries on which the scores are based.



Metric	Whole archive (#Entries)	EM structures (#Entries)
Clashscore	210492	15764
Ramachandran outliers	207382	16835
Sidechain outliers	206894	16415

The table below summarises the geometric issues observed across the polymeric chains and their fit to the map. The red, orange, yellow and green segments of the bar indicate the fraction of residues that contain outliers for  $\geq 3$ , 2, 1 and 0 types of geometric quality criteria respectively. A grey segment represents the fraction of residues that are not modelled. The numeric value for each fraction is indicated below the corresponding segment, with a dot representing fractions  $\leq 5\%$ . The upper red bar (where present) indicates the fraction of residues that have poor fit to the EM map (all-atom inclusion  $< 40\%$ ). The numeric value is given above the bar.

Mol	Chain	Length	Quality of chain
1	R	502	
2	A	393	
3	B	354	
4	G	67	
5	N	135	

## 2 Entry composition

There are 8 unique types of molecules in this entry. The entry contains 8531 atoms, of which 0 are hydrogens and 0 are deuteriums.

In the tables below, the AltConf column contains the number of residues with at least one atom in alternate conformation and the Trace column contains the number of residues modelled with at most 2 atoms.

- Molecule 1 is a protein called D(1A) dopamine receptor.

Mol	Chain	Residues	Atoms					AltConf	Trace
1	R	282	Total	C	N	O	S	0	0
			2244	1490	368	369	17		

There are 56 discrepancies between the modelled and reference sequences:

Chain	Residue	Modelled	Actual	Comment	Reference
R	-47	ASP	-	expression tag	UNP P21728
R	-46	TYR	-	expression tag	UNP P21728
R	-45	LYS	-	expression tag	UNP P21728
R	-44	ASP	-	expression tag	UNP P21728
R	-43	ASP	-	expression tag	UNP P21728
R	-42	ASP	-	expression tag	UNP P21728
R	-41	ASP	-	expression tag	UNP P21728
R	-40	VAL	-	expression tag	UNP P21728
R	-39	ASP	-	expression tag	UNP P21728
R	-38	MET	-	expression tag	UNP P21728
R	-37	GLY	-	expression tag	UNP P21728
R	-36	GLN	-	expression tag	UNP P21728
R	-35	PRO	-	expression tag	UNP P21728
R	-34	GLY	-	expression tag	UNP P21728
R	-33	ASN	-	expression tag	UNP P21728
R	-32	GLY	-	expression tag	UNP P21728
R	-31	SER	-	expression tag	UNP P21728
R	-30	ALA	-	expression tag	UNP P21728
R	-29	PHE	-	expression tag	UNP P21728
R	-28	LEU	-	expression tag	UNP P21728
R	-27	LEU	-	expression tag	UNP P21728
R	-26	ALA	-	expression tag	UNP P21728
R	-25	PRO	-	expression tag	UNP P21728
R	-24	ASN	-	expression tag	UNP P21728
R	-23	GLY	-	expression tag	UNP P21728
R	-22	SER	-	expression tag	UNP P21728
R	-21	HIS	-	expression tag	UNP P21728

*Continued on next page...*

*Continued from previous page...*

Chain	Residue	Modelled	Actual	Comment	Reference
R	-20	ALA	-	expression tag	UNP P21728
R	-19	PRO	-	expression tag	UNP P21728
R	-18	ASP	-	expression tag	UNP P21728
R	-17	HIS	-	expression tag	UNP P21728
R	-16	ASP	-	expression tag	UNP P21728
R	-15	VAL	-	expression tag	UNP P21728
R	-14	THR	-	expression tag	UNP P21728
R	-13	GLN	-	expression tag	UNP P21728
R	-12	GLN	-	expression tag	UNP P21728
R	-11	ARG	-	expression tag	UNP P21728
R	-10	ASP	-	expression tag	UNP P21728
R	-9	GLU	-	expression tag	UNP P21728
R	-8	GLU	-	expression tag	UNP P21728
R	-7	ASN	-	expression tag	UNP P21728
R	-6	LEU	-	expression tag	UNP P21728
R	-5	TYR	-	expression tag	UNP P21728
R	-4	PHE	-	expression tag	UNP P21728
R	-3	GLN	-	expression tag	UNP P21728
R	-2	GLY	-	expression tag	UNP P21728
R	-1	ALA	-	expression tag	UNP P21728
R	0	SER	-	expression tag	UNP P21728
R	447	HIS	-	expression tag	UNP P21728
R	448	HIS	-	expression tag	UNP P21728
R	449	HIS	-	expression tag	UNP P21728
R	450	HIS	-	expression tag	UNP P21728
R	451	HIS	-	expression tag	UNP P21728
R	452	HIS	-	expression tag	UNP P21728
R	453	HIS	-	expression tag	UNP P21728
R	454	HIS	-	expression tag	UNP P21728

- Molecule 2 is a protein called Guanine nucleotide-binding protein G(s) subunit alpha isoforms short.

Mol	Chain	Residues	Atoms					AltConf	Trace
2	A	238	Total	C	N	O	S	0	0
			1978	1245	360	366	7		

There are 2 discrepancies between the modelled and reference sequences:

Chain	Residue	Modelled	Actual	Comment	Reference
A	226	ALA	GLY	conflict	UNP P63092
A	366	SER	ALA	conflict	UNP P63092

- Molecule 3 is a protein called Guanine nucleotide-binding protein G(I)/G(S)/G(T) subunit beta-1.

Mol	Chain	Residues	Atoms					AltConf	Trace
3	B	339	Total	C	N	O	S	0	0
			2604	1606	468	509	21		

There are 15 discrepancies between the modelled and reference sequences:

Chain	Residue	Modelled	Actual	Comment	Reference
B	-12	HIS	-	expression tag	UNP P62873
B	-11	HIS	-	expression tag	UNP P62873
B	-10	HIS	-	expression tag	UNP P62873
B	-9	HIS	-	expression tag	UNP P62873
B	-8	HIS	-	expression tag	UNP P62873
B	-7	HIS	-	expression tag	UNP P62873
B	-6	HIS	-	expression tag	UNP P62873
B	-5	HIS	-	expression tag	UNP P62873
B	-4	MET	-	expression tag	UNP P62873
B	-3	GLY	-	expression tag	UNP P62873
B	-2	SER	-	expression tag	UNP P62873
B	-1	LEU	-	expression tag	UNP P62873
B	0	LEU	-	expression tag	UNP P62873
B	1	GLN	-	expression tag	UNP P62873
B	341	GLY	-	expression tag	UNP P62873

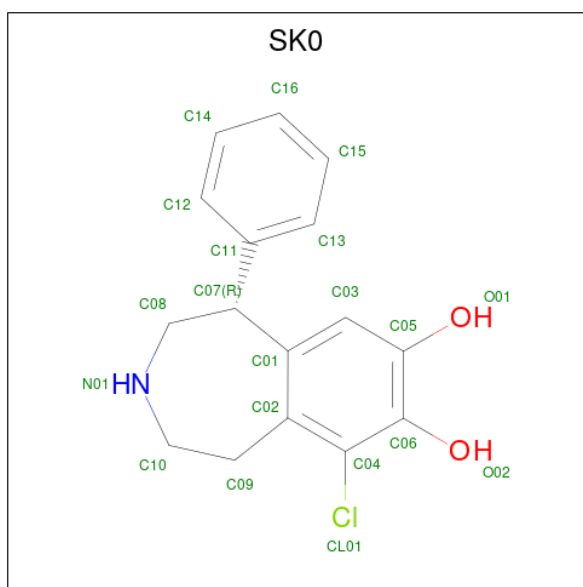
- Molecule 4 is a protein called Guanine nucleotide-binding protein G(I)/G(S)/G(O) subunit gamma-2.

Mol	Chain	Residues	Atoms					AltConf	Trace
4	G	57	Total	C	N	O	S	0	0
			436	273	77	83	3		

- Molecule 5 is a protein called Nanobody 35.

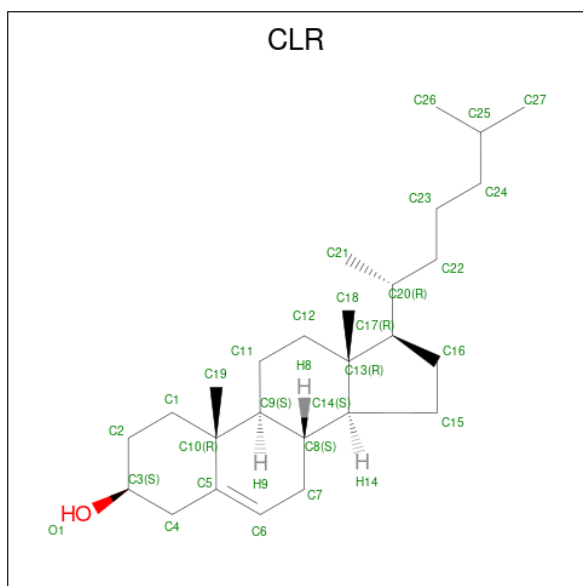
Mol	Chain	Residues	Atoms					AltConf	Trace
5	N	128	Total	C	N	O	S	0	0
			973	605	170	192	6		

- Molecule 6 is (1R)-6-chloro-1-phenyl-2,3,4,5-tetrahydro-1H-3-benzazepine-7,8-diol (CCD ID: SK0) (formula: C<sub>16</sub>H<sub>16</sub>ClNO<sub>2</sub>) (labeled as "Ligand of Interest" by depositor).



Mol	Chain	Residues	Atoms					AltConf
6	R	1	Total	C	Cl	N	O	0
			20	16	1	1	2	

- Molecule 7 is CHOLESTEROL (CCD ID: CLR) (formula:  $C_{27}H_{46}O$ ).



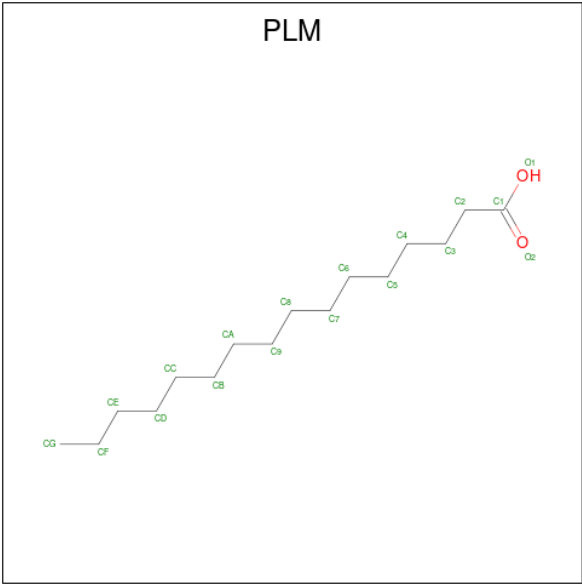
Mol	Chain	Residues	Atoms			AltConf
7	R	1	Total	C	O	0
			28	27	1	
7	R	1	Total	C	O	0
			28	27	1	
7	R	1	Total	C	O	0
			28	27	1	

*Continued on next page...*

Continued from previous page...

Mol	Chain	Residues	Atoms			AltConf
7	R	1	Total	C	O	0
			28	27	1	
7	R	1	Total	C	O	0
			28	27	1	
7	R	1	Total	C	O	0
			28	27	1	

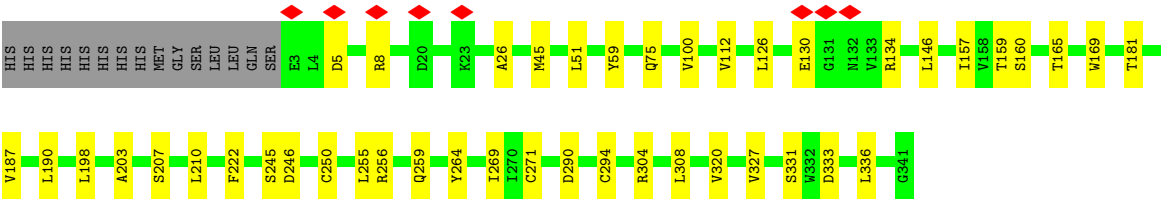
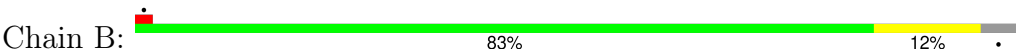
- Molecule 8 is PALMITIC ACID (CCD ID: PLM) (formula: C<sub>16</sub>H<sub>32</sub>O<sub>2</sub>).



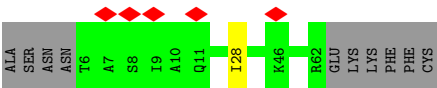
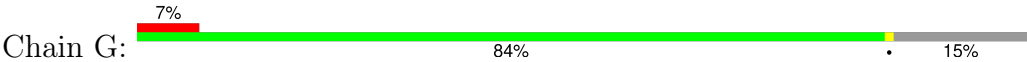
Mol	Chain	Residues	Atoms			AltConf
8	R	1	Total	C	O	0
			18	16	2	
8	R	1	Total	C	O	0
			18	16	2	
8	R	1	Total	C	O	0
			18	16	2	
8	R	1	Total	C	O	0
			18	16	2	
8	R	1	Total	C	O	0
			18	16	2	
8	R	1	Total	C	O	0
			18	16	2	







• Molecule 4: Guanine nucleotide-binding protein G(I)/G(S)/G(O) subunit gamma-2



• Molecule 5: Nanobody 35



## 4 Experimental information

Property	Value	Source
EM reconstruction method	SINGLE PARTICLE	Depositor
Imposed symmetry	POINT, Not provided	
Number of particles used	645131	Depositor
Resolution determination method	FSC 0.143 CUT-OFF	Depositor
CTF correction method	NONE	Depositor
Microscope	FEI TITAN KRIOS	Depositor
Voltage (kV)	300	Depositor
Electron dose ( $e^-/\text{\AA}^2$ )	64	Depositor
Minimum defocus (nm)	Not provided	
Maximum defocus (nm)	Not provided	
Magnification	Not provided	
Image detector	GATAN K2 BASE (4k x 4k)	Depositor
Maximum map value	0.275	Depositor
Minimum map value	-0.198	Depositor
Average map value	0.000	Depositor
Map value standard deviation	0.009	Depositor
Recommended contour level	0.02	Depositor
Map size ( $\text{\AA}$ )	194.68802, 194.68802, 194.68802	wwPDB
Map dimensions	192, 192, 192	wwPDB
Map angles ( $^\circ$ )	90.0, 90.0, 90.0	wwPDB
Pixel spacing ( $\text{\AA}$ )	1.014, 1.014, 1.014	Depositor

## 5 Model quality [i](#)

### 5.1 Standard geometry [i](#)

Bond lengths and bond angles in the following residue types are not validated in this section: CLR, PLM, SK0

The Z score for a bond length (or angle) is the number of standard deviations the observed value is removed from the expected value. A bond length (or angle) with  $|Z| > 5$  is considered an outlier worth inspection. RMSZ is the root-mean-square of all Z scores of the bond lengths (or angles).

Mol	Chain	Bond lengths		Bond angles	
		RMSZ	$\# Z  > 5$	RMSZ	$\# Z  > 5$
1	R	0.32	0/2302	0.76	0/3131
2	A	0.23	0/2014	0.60	0/2706
3	B	0.21	0/2651	0.63	0/3594
4	G	0.20	0/442	0.66	0/597
5	N	0.22	0/993	0.66	0/1345
All	All	0.25	0/8402	0.66	0/11373

There are no bond length outliers.

There are no bond angle outliers.

There are no chirality outliers.

There are no planarity outliers.

### 5.2 Too-close contacts [i](#)

In the following table, the Non-H and H(model) columns list the number of non-hydrogen atoms and hydrogen atoms in the chain respectively. The H(added) column lists the number of hydrogen atoms added and optimized by MolProbity. The Clashes column lists the number of clashes within the asymmetric unit, whereas Symm-Clashes lists symmetry-related clashes.

Mol	Chain	Non-H	H(model)	H(added)	Clashes	Symm-Clashes
1	R	2244	0	2318	22	0
2	A	1978	0	1961	19	0
3	B	2604	0	2508	25	0
4	G	436	0	448	1	0
5	N	973	0	938	15	0
6	R	20	0	0	0	0
7	R	168	0	276	6	0
8	R	108	0	186	0	0
All	All	8531	0	8635	80	0

The all-atom clashscore is defined as the number of clashes found per 1000 atoms (including hydrogen atoms). The all-atom clashscore for this structure is 5.

All (80) close contacts within the same asymmetric unit are listed below, sorted by their clash magnitude.

Atom-1	Atom-2	Interatomic distance (Å)	Clash overlap (Å)
1:R:225:ILE:HG21	1:R:267:GLU:HB2	1.75	0.67
1:R:281:PHE:HA	1:R:323:ASN:HD21	1.61	0.66
1:R:122:TYR:HB2	1:R:213:THR:HG23	1.79	0.65
3:B:271:CYS:HB3	3:B:290:ASP:HB3	1.79	0.64
5:N:20:LEU:HD12	5:N:81:LEU:HD23	1.82	0.61
3:B:210:LEU:HD22	3:B:255:LEU:HD22	1.82	0.60
5:N:40:ALA:HB3	5:N:43:LYS:HB2	1.86	0.58
3:B:294:CYS:HB2	3:B:308:LEU:HB2	1.86	0.58
3:B:75:GLN:NE2	3:B:100:VAL:O	2.34	0.57
3:B:269:ILE:HD12	3:B:304:ARG:HH22	1.70	0.56
3:B:331:SER:OG	3:B:333:ASP:OD1	2.24	0.55
5:N:64:VAL:HB	5:N:68:PHE:HE2	1.70	0.55
1:R:133:ARG:NH2	2:A:216:LYS:O	2.39	0.55
2:A:207:ILE:HD11	2:A:222:PHE:HB3	1.87	0.55
3:B:207:SER:HA	3:B:222:PHE:O	2.08	0.54
2:A:362:HIS:NE2	2:A:378:ASP:OD2	2.38	0.54
1:R:160:GLN:HB3	7:R:505:CLR:H191	1.88	0.54
5:N:69:THR:HB	5:N:82:GLN:HB3	1.89	0.54
2:A:59:GLN:NE2	2:A:366:SER:O	2.41	0.53
5:N:35:ASN:ND2	5:N:109:ASP:OD2	2.40	0.53
1:R:200:VAL:HA	1:R:204:TYR:HD2	1.74	0.53
1:R:282:VAL:O	1:R:286:LEU:HB2	2.09	0.52
2:A:54:SER:HA	2:A:57:VAL:HG22	1.91	0.52
2:A:59:GLN:OE1	2:A:371:ASN:ND2	2.42	0.52
2:A:365:CYS:HB3	2:A:368:ASP:HB2	1.92	0.52
3:B:187:VAL:HA	3:B:203:ALA:HA	1.90	0.52
2:A:388:LEU:HD22	2:A:393:LEU:HD23	1.91	0.51
1:R:334:ASN:HB2	1:R:337:PHE:HD2	1.75	0.51
3:B:320:VAL:HG22	3:B:327:VAL:HG22	1.93	0.51
2:A:311:TYR:HA	5:N:63:SER:HB3	1.93	0.51
3:B:160:SER:HB2	3:B:190:LEU:HD23	1.93	0.50
1:R:288:PHE:O	1:R:292:ASN:HB2	2.11	0.50
5:N:9:GLY:HA2	5:N:18:LEU:HD21	1.93	0.49
1:R:61:PHE:HA	1:R:64:ILE:HD12	1.95	0.49
1:R:328:PRO:O	1:R:332:ALA:HB3	2.13	0.48
3:B:45:MET:HB2	3:B:308:LEU:HD21	1.94	0.48
1:R:167:LYS:HD3	1:R:191:SER:HA	1.96	0.48

*Continued on next page...*

*Continued from previous page...*

Atom-1	Atom-2	Interatomic distance (Å)	Clash overlap (Å)
1:R:123:TRP:HD1	1:R:131:TYR:HD1	1.62	0.48
5:N:22:CYS:HB3	5:N:79:LEU:HB3	1.96	0.47
2:A:308:ILE:O	2:A:312:PHE:N	2.47	0.47
3:B:146:LEU:HD11	3:B:159:THR:HB	1.95	0.47
5:N:47:TRP:O	5:N:61:THR:OG1	2.33	0.47
3:B:51:LEU:HB2	3:B:336:LEU:HB3	1.97	0.46
3:B:165:THR:HG22	3:B:181:THR:HG22	1.98	0.46
2:A:388:LEU:HB3	2:A:394:LEU:HG	1.98	0.46
3:B:130:GLU:OE1	3:B:134:ARG:NH1	2.48	0.46
2:A:253:TYR:HB2	2:A:300:LYS:HD3	1.98	0.45
3:B:250:CYS:HB2	3:B:264:TYR:HB2	1.99	0.45
3:B:59:TYR:HB2	3:B:75:GLN:HE21	1.82	0.45
3:B:26:ALA:HB2	3:B:259:GLN:HE22	1.82	0.45
1:R:142:ILE:HG12	7:R:507:CLR:H111	1.99	0.44
3:B:256:ARG:HB3	4:G:28:ILE:HB	2.00	0.44
7:R:507:CLR:H162	7:R:507:CLR:H222	1.75	0.43
5:N:2:VAL:HG11	5:N:98:ARG:HH21	1.83	0.43
7:R:502:CLR:H232	7:R:502:CLR:H211	1.80	0.43
2:A:365:CYS:SG	2:A:366:SER:N	2.91	0.43
3:B:245:SER:OG	3:B:246:ASP:N	2.51	0.43
5:N:6:GLU:HA	5:N:21:SER:O	2.19	0.43
5:N:67:ARG:NH2	5:N:85:SER:O	2.51	0.43
1:R:129:PHE:HZ	2:A:379:CYS:HB3	1.84	0.42
1:R:271:LEU:O	1:R:275:SER:HB3	2.19	0.42
3:B:5:ASP:OD1	3:B:8:ARG:NH2	2.39	0.42
1:R:298:CYS:SG	1:R:307:CYS:N	2.93	0.42
7:R:502:CLR:H183	7:R:502:CLR:H20	1.92	0.42
2:A:279:ASN:HB3	2:A:282:LEU:HB2	2.00	0.42
5:N:39:GLN:HB2	5:N:45:LEU:HD23	2.02	0.42
3:B:51:LEU:HD12	3:B:336:LEU:HD23	2.02	0.41
1:R:271:LEU:HD22	7:R:504:CLR:H191	2.01	0.41
2:A:46:LEU:O	2:A:246:PHE:HA	2.20	0.41
3:B:112:VAL:HG23	3:B:126:LEU:HD11	2.03	0.41
2:A:214:VAL:O	2:A:217:VAL:HB	2.20	0.41
3:B:198:LEU:HD13	3:B:210:LEU:HD11	2.03	0.41
3:B:157:ILE:HG23	3:B:169:TRP:HB2	2.03	0.41
2:A:283:ARG:O	2:A:357:HIS:ND1	2.53	0.41
2:A:230:GLU:HG3	5:N:111:THR:HG21	2.02	0.41
1:R:44:VAL:HG22	1:R:341:PHE:HZ	1.86	0.40
1:R:271:LEU:O	1:R:275:SER:CB	2.69	0.40
5:N:7:SER:HB3	5:N:21:SER:HB2	2.02	0.40

*Continued on next page...*

*Continued from previous page...*

Atom-1	Atom-2	Interatomic distance (Å)	Clash overlap (Å)
1:R:98:ILE:HD13	1:R:160:GLN:HE22	1.87	0.40
1:R:185:ASN:ND2	1:R:187:ASP:OD2	2.54	0.40

There are no symmetry-related clashes.

## 5.3 Torsion angles [i](#)

### 5.3.1 Protein backbone [i](#)

In the following table, the Percentiles column shows the percent Ramachandran outliers of the chain as a percentile score with respect to all PDB entries followed by that with respect to all EM entries.

The Analysed column shows the number of residues for which the backbone conformation was analysed, and the total number of residues.

Mol	Chain	Analysed	Favoured	Allowed	Outliers	Percentiles	
1	R	274/502 (55%)	264 (96%)	10 (4%)	0	100	100
2	A	232/393 (59%)	226 (97%)	6 (3%)	0	100	100
3	B	337/354 (95%)	320 (95%)	17 (5%)	0	100	100
4	G	55/67 (82%)	54 (98%)	1 (2%)	0	100	100
5	N	126/135 (93%)	122 (97%)	4 (3%)	0	100	100
All	All	1024/1451 (71%)	986 (96%)	38 (4%)	0	100	100

There are no Ramachandran outliers to report.

### 5.3.2 Protein sidechains [i](#)

In the following table, the Percentiles column shows the percent sidechain outliers of the chain as a percentile score with respect to all PDB entries followed by that with respect to all EM entries.

The Analysed column shows the number of residues for which the sidechain conformation was analysed, and the total number of residues.

Mol	Chain	Analysed	Rotameric	Outliers	Percentiles	
1	R	249/436 (57%)	249 (100%)	0	100	100
2	A	215/350 (61%)	215 (100%)	0	100	100

*Continued on next page...*

*Continued from previous page...*

Mol	Chain	Analysed	Rotameric	Outliers	Percentiles	
3	B	281/295 (95%)	281 (100%)	0	100	100
4	G	46/55 (84%)	46 (100%)	0	100	100
5	N	106/113 (94%)	106 (100%)	0	100	100
All	All	897/1249 (72%)	897 (100%)	0	100	100

There are no protein residues with a non-rotameric sidechain to report.

Sometimes sidechains can be flipped to improve hydrogen bonding and reduce clashes. All (9) such sidechains are listed below:

Mol	Chain	Res	Type
1	R	160	GLN
1	R	323	ASN
1	R	327	ASN
2	A	220	HIS
2	A	264	ASN
3	B	259	GLN
3	B	266	HIS
3	B	268	ASN
5	N	82	GLN

### 5.3.3 RNA [i](#)

There are no RNA molecules in this entry.

## 5.4 Non-standard residues in protein, DNA, RNA chains [i](#)

There are no non-standard protein/DNA/RNA residues in this entry.

## 5.5 Carbohydrates [i](#)

There are no oligosaccharides in this entry.

## 5.6 Ligand geometry [i](#)

13 ligands are modelled in this entry.

In the following table, the Counts columns list the number of bonds (or angles) for which Mogul statistics could be retrieved, the number of bonds (or angles) that are observed in the model and

the number of bonds (or angles) that are defined in the Chemical Component Dictionary. The Link column lists molecule types, if any, to which the group is linked. The Z score for a bond length (or angle) is the number of standard deviations the observed value is removed from the expected value. A bond length (or angle) with  $|Z| > 2$  is considered an outlier worth inspection. RMSZ is the root-mean-square of all Z scores of the bond lengths (or angles).

Mol	Type	Chain	Res	Link	Bond lengths			Bond angles		
					Counts	RMSZ	# Z  > 2	Counts	RMSZ	# Z  > 2
7	CLR	R	505	-	31,31,31	0.61	0	48,48,48	1.35	10 (20%)
6	SK0	R	501	-	22,22,22	0.57	0	23,31,31	0.63	0
7	CLR	R	503	-	31,31,31	0.64	1 (3%)	48,48,48	1.29	6 (12%)
7	CLR	R	502	-	31,31,31	0.63	1 (3%)	48,48,48	1.37	7 (14%)
7	CLR	R	507	-	31,31,31	0.63	0	48,48,48	1.33	5 (10%)
7	CLR	R	506	-	31,31,31	0.64	0	48,48,48	1.24	6 (12%)
8	PLM	R	512	-	17,17,17	0.59	0	17,17,17	0.73	0
8	PLM	R	508	-	17,17,17	0.58	0	17,17,17	0.74	0
8	PLM	R	510	-	17,17,17	0.59	0	17,17,17	0.73	0
7	CLR	R	504	-	31,31,31	0.65	1 (3%)	48,48,48	1.49	8 (16%)
8	PLM	R	511	-	17,17,17	0.58	0	17,17,17	0.72	0
8	PLM	R	513	-	17,17,17	0.57	0	17,17,17	0.74	0
8	PLM	R	509	-	17,17,17	0.59	0	17,17,17	0.73	0

In the following table, the Chirals column lists the number of chiral outliers, the number of chiral centers analysed, the number of these observed in the model and the number defined in the Chemical Component Dictionary. Similar counts are reported in the Torsion and Rings columns. '-' means no outliers of that kind were identified.

Mol	Type	Chain	Res	Link	Chirals	Torsions	Rings
7	CLR	R	505	-	-	4/10/68/68	0/4/4/4
6	SK0	R	501	-	-	0/4/15/15	0/3/3/3
7	CLR	R	503	-	-	4/10/68/68	0/4/4/4
7	CLR	R	502	-	-	4/10/68/68	0/4/4/4
7	CLR	R	507	-	-	4/10/68/68	0/4/4/4
7	CLR	R	506	-	-	1/10/68/68	0/4/4/4
8	PLM	R	512	-	-	4/15/15/15	-
8	PLM	R	508	-	-	2/15/15/15	-
8	PLM	R	510	-	-	4/15/15/15	-
7	CLR	R	504	-	-	3/10/68/68	0/4/4/4
8	PLM	R	511	-	-	2/15/15/15	-
8	PLM	R	513	-	-	5/15/15/15	-
8	PLM	R	509	-	-	3/15/15/15	-



All (3) bond length outliers are listed below:

Mol	Chain	Res	Type	Atoms	Z	Observed(Å)	Ideal(Å)
7	R	504	CLR	C10-C9	-2.18	1.52	1.56
7	R	503	CLR	C10-C9	-2.06	1.52	1.56
7	R	502	CLR	C10-C9	-2.05	1.52	1.56

All (42) bond angle outliers are listed below:

Mol	Chain	Res	Type	Atoms	Z	Observed(°)	Ideal(°)
7	R	504	CLR	C21-C20-C22	-4.24	103.78	110.34
7	R	504	CLR	C19-C10-C9	-4.04	107.12	111.66
7	R	507	CLR	C13-C17-C20	-3.45	114.17	119.50
7	R	502	CLR	C13-C17-C20	-3.33	114.35	119.50
7	R	503	CLR	C19-C10-C9	-2.87	108.44	111.66
7	R	505	CLR	C13-C17-C20	-2.87	115.07	119.50
7	R	505	CLR	C7-C8-C14	-2.79	106.98	110.93
7	R	502	CLR	C19-C10-C9	-2.77	108.56	111.66
7	R	506	CLR	C19-C10-C9	-2.76	108.57	111.66
7	R	506	CLR	C7-C8-C14	-2.74	107.06	110.93
7	R	505	CLR	C19-C10-C9	-2.73	108.59	111.66
7	R	507	CLR	C19-C10-C9	-2.49	108.87	111.66
7	R	502	CLR	C13-C14-C8	-2.46	110.93	114.41
7	R	504	CLR	C13-C14-C8	-2.45	110.93	114.41
7	R	507	CLR	C13-C14-C8	-2.43	110.96	114.41
7	R	503	CLR	C7-C8-C14	-2.39	107.54	110.93
7	R	505	CLR	C4-C5-C6	-2.38	117.34	120.57
7	R	505	CLR	C16-C15-C14	-2.37	100.50	105.14
7	R	504	CLR	C16-C15-C14	-2.34	100.56	105.14
7	R	505	CLR	C3-C4-C5	-2.32	108.36	112.05
7	R	504	CLR	C10-C9-C8	-2.30	109.36	112.71
7	R	503	CLR	C21-C20-C22	-2.29	106.79	110.34
7	R	503	CLR	C13-C17-C20	-2.29	115.96	119.50
7	R	506	CLR	C3-C4-C5	-2.22	108.51	112.05
7	R	502	CLR	C7-C8-C14	-2.21	107.80	110.93
7	R	504	CLR	C9-C10-C5	2.20	112.87	109.65
7	R	502	CLR	C4-C5-C10	2.19	119.22	116.42
7	R	506	CLR	C16-C15-C14	-2.18	100.88	105.14
7	R	503	CLR	C3-C4-C5	-2.18	108.59	112.05
7	R	507	CLR	C7-C8-C14	-2.17	107.85	110.93
7	R	505	CLR	C9-C10-C5	2.16	112.82	109.65
7	R	502	CLR	C4-C5-C6	-2.16	117.64	120.57
7	R	503	CLR	C4-C5-C10	2.15	119.17	116.42
7	R	502	CLR	C21-C20-C17	-2.14	109.67	112.88
7	R	506	CLR	C4-C5-C10	2.13	119.15	116.42

*Continued on next page...*

*Continued from previous page...*

Mol	Chain	Res	Type	Atoms	Z	Observed(°)	Ideal(°)
7	R	507	CLR	C9-C10-C5	2.12	112.75	109.65
7	R	505	CLR	C13-C14-C8	-2.12	111.41	114.41
7	R	504	CLR	C3-C4-C5	-2.11	108.70	112.05
7	R	506	CLR	C4-C5-C6	-2.11	117.71	120.57
7	R	504	CLR	C4-C5-C10	2.07	119.08	116.42
7	R	505	CLR	C4-C5-C10	2.05	119.05	116.42
7	R	505	CLR	C15-C14-C8	-2.02	115.88	119.10

There are no chirality outliers.

All (40) torsion outliers are listed below:

Mol	Chain	Res	Type	Atoms
7	R	507	CLR	C13-C17-C20-C21
7	R	507	CLR	C13-C17-C20-C22
7	R	507	CLR	C16-C17-C20-C21
7	R	502	CLR	C13-C17-C20-C21
7	R	504	CLR	C17-C20-C22-C23
7	R	502	CLR	C13-C17-C20-C22
7	R	504	CLR	C21-C20-C22-C23
7	R	502	CLR	C16-C17-C20-C21
7	R	505	CLR	C13-C17-C20-C21
7	R	505	CLR	C13-C17-C20-C22
7	R	505	CLR	C16-C17-C20-C21
7	R	507	CLR	C16-C17-C20-C22
7	R	502	CLR	C16-C17-C20-C22
8	R	509	PLM	C8-C9-CA-CB
7	R	503	CLR	C13-C17-C20-C21
7	R	505	CLR	C16-C17-C20-C22
7	R	503	CLR	C16-C17-C20-C21
7	R	503	CLR	C13-C17-C20-C22
8	R	512	PLM	C3-C4-C5-C6
8	R	510	PLM	C5-C6-C7-C8
7	R	506	CLR	C13-C17-C20-C21
7	R	503	CLR	C16-C17-C20-C22
8	R	512	PLM	O2-C1-C2-C3
8	R	509	PLM	O2-C1-C2-C3
8	R	509	PLM	O1-C1-C2-C3
8	R	511	PLM	O2-C1-C2-C3
8	R	510	PLM	O1-C1-C2-C3
8	R	510	PLM	O2-C1-C2-C3
8	R	513	PLM	O1-C1-C2-C3
8	R	513	PLM	CC-CD-CE-CF

*Continued on next page...*

*Continued from previous page...*

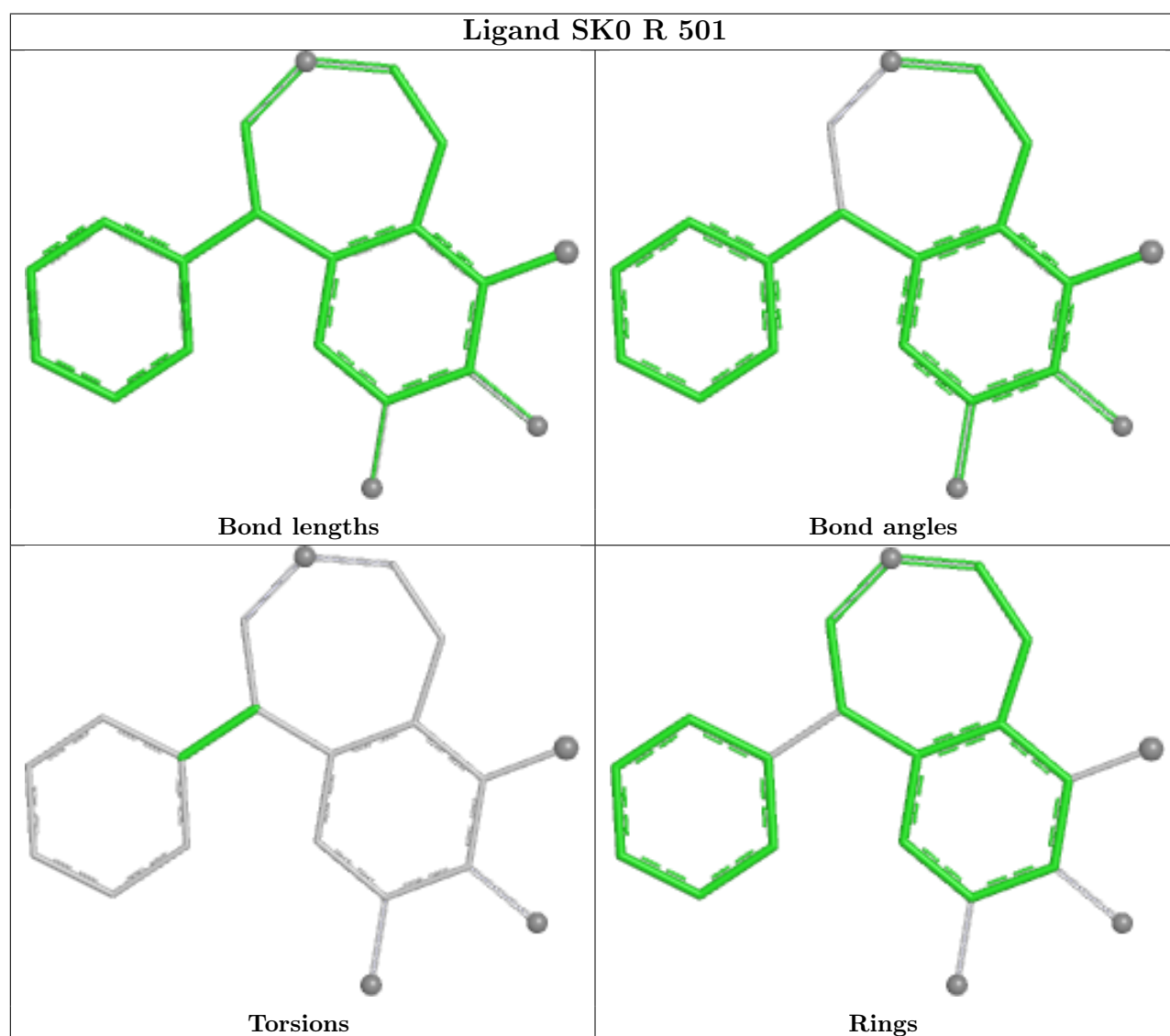
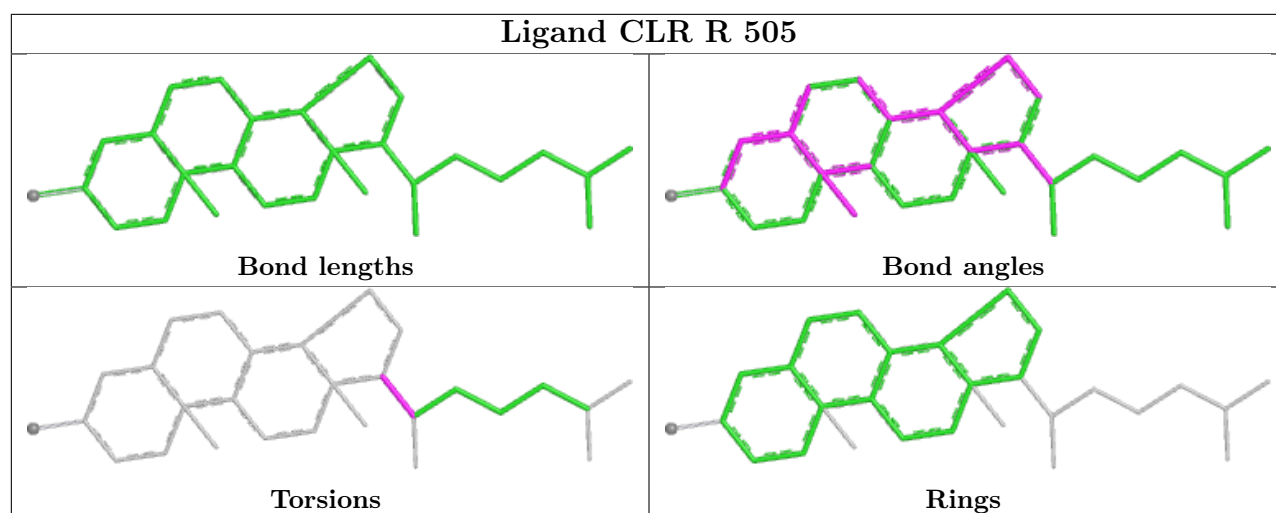
Mol	Chain	Res	Type	Atoms
8	R	513	PLM	C9-CA-CB-CC
8	R	508	PLM	O1-C1-C2-C3
8	R	513	PLM	O2-C1-C2-C3
8	R	511	PLM	O1-C1-C2-C3
8	R	512	PLM	O1-C1-C2-C3
8	R	508	PLM	O2-C1-C2-C3
8	R	513	PLM	C4-C5-C6-C7
7	R	504	CLR	C22-C23-C24-C25
8	R	512	PLM	C9-CA-CB-CC
8	R	510	PLM	C9-CA-CB-CC

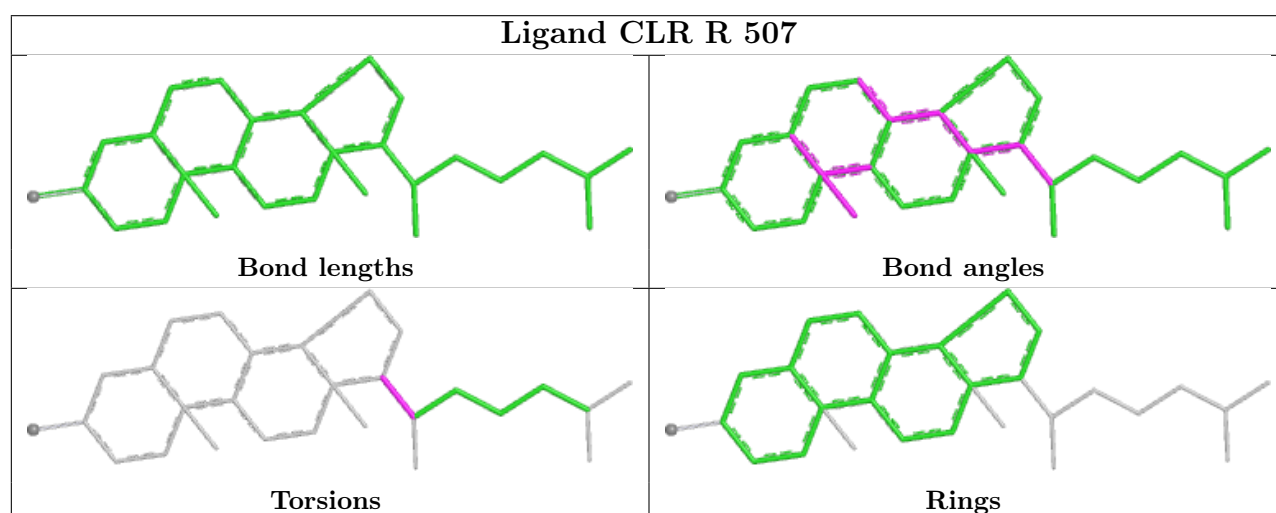
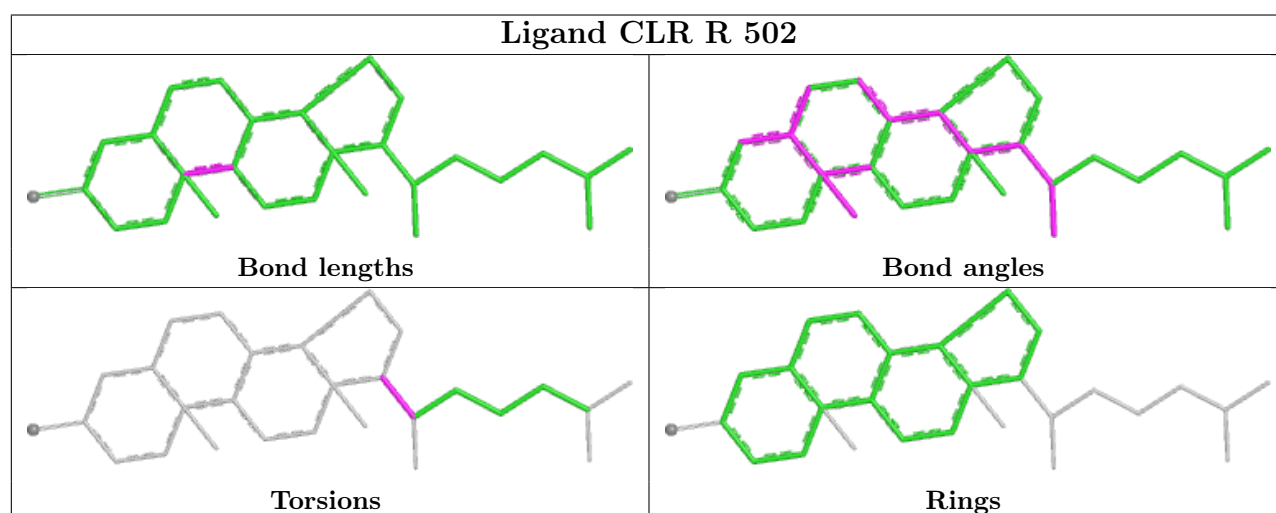
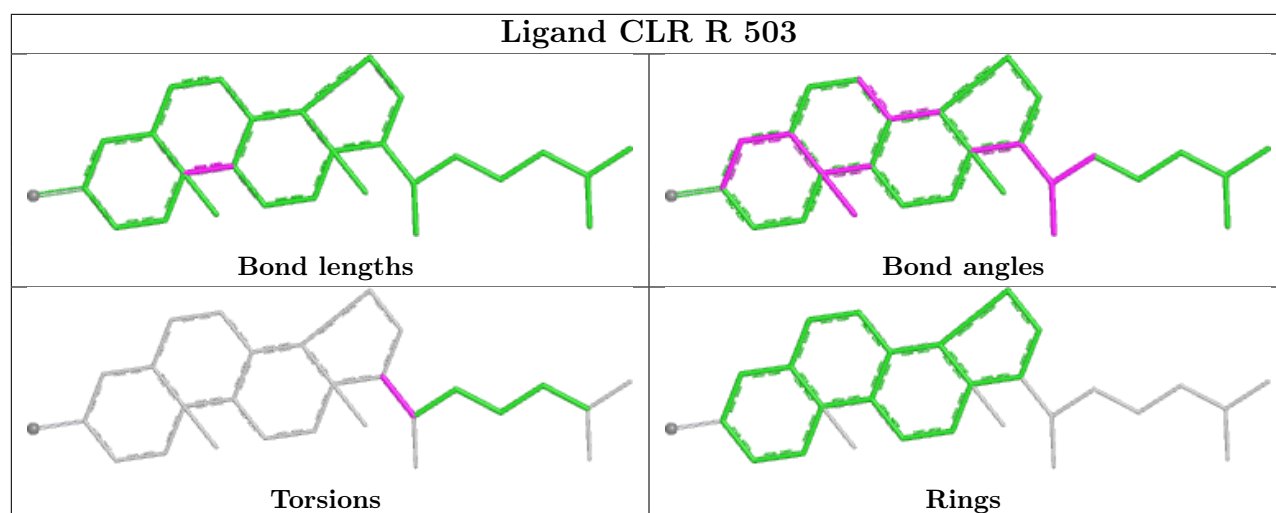
There are no ring outliers.

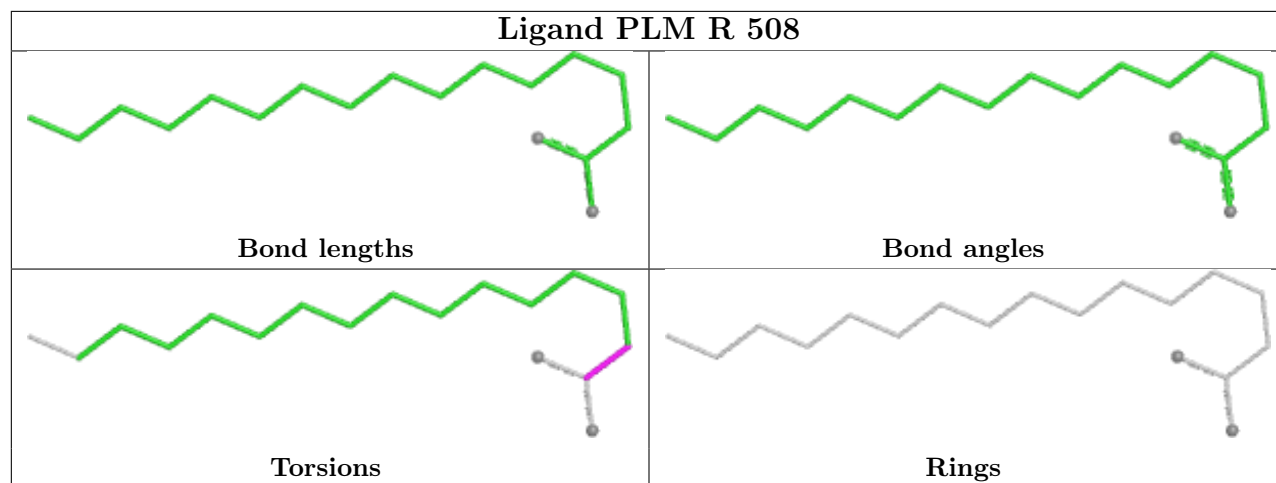
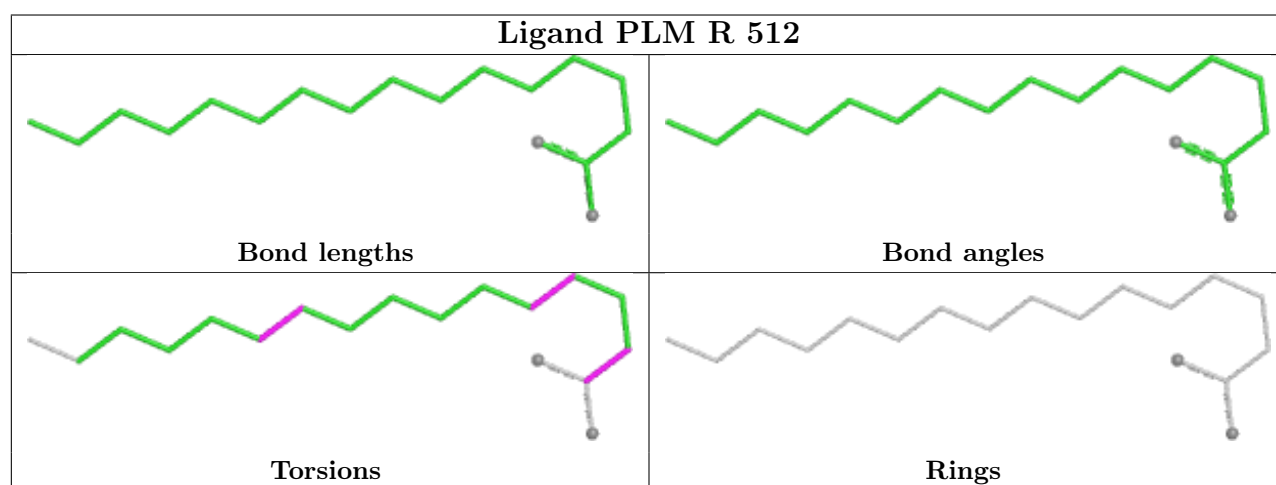
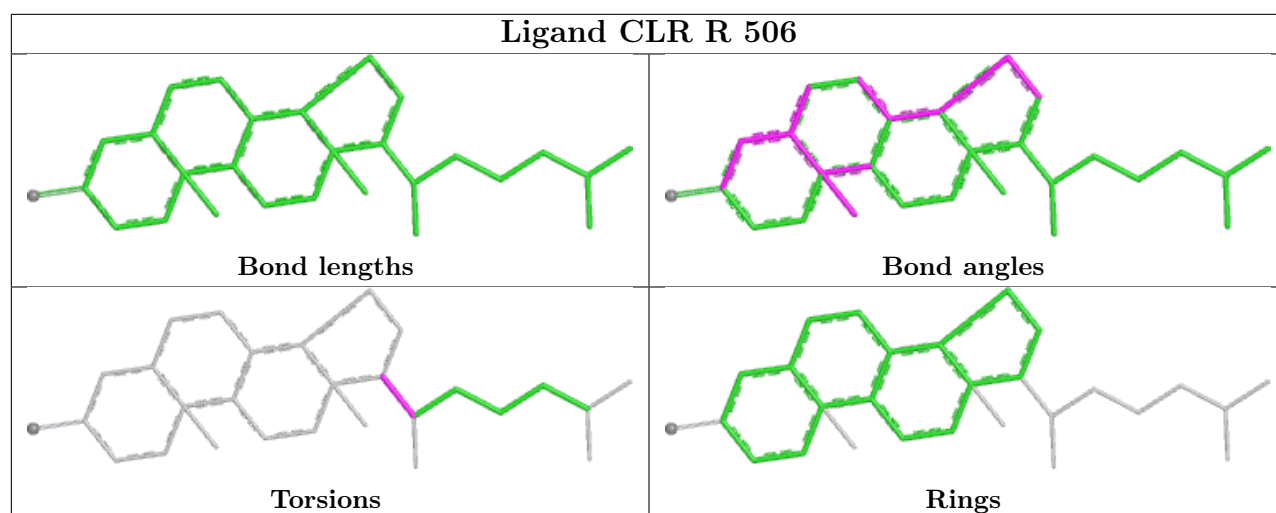
4 monomers are involved in 6 short contacts:

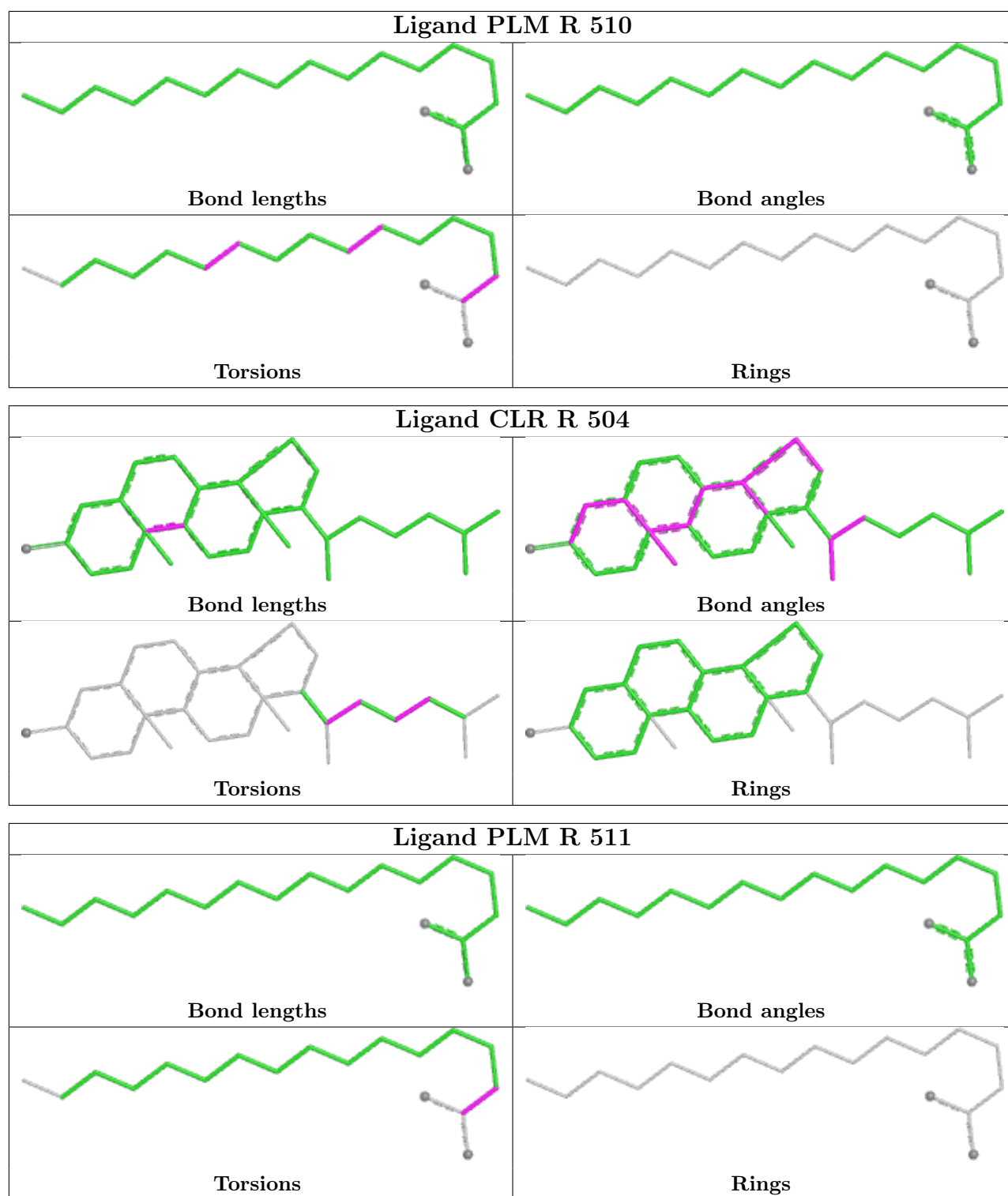
Mol	Chain	Res	Type	Clashes	Symm-Clashes
7	R	505	CLR	1	0
7	R	502	CLR	2	0
7	R	507	CLR	2	0
7	R	504	CLR	1	0

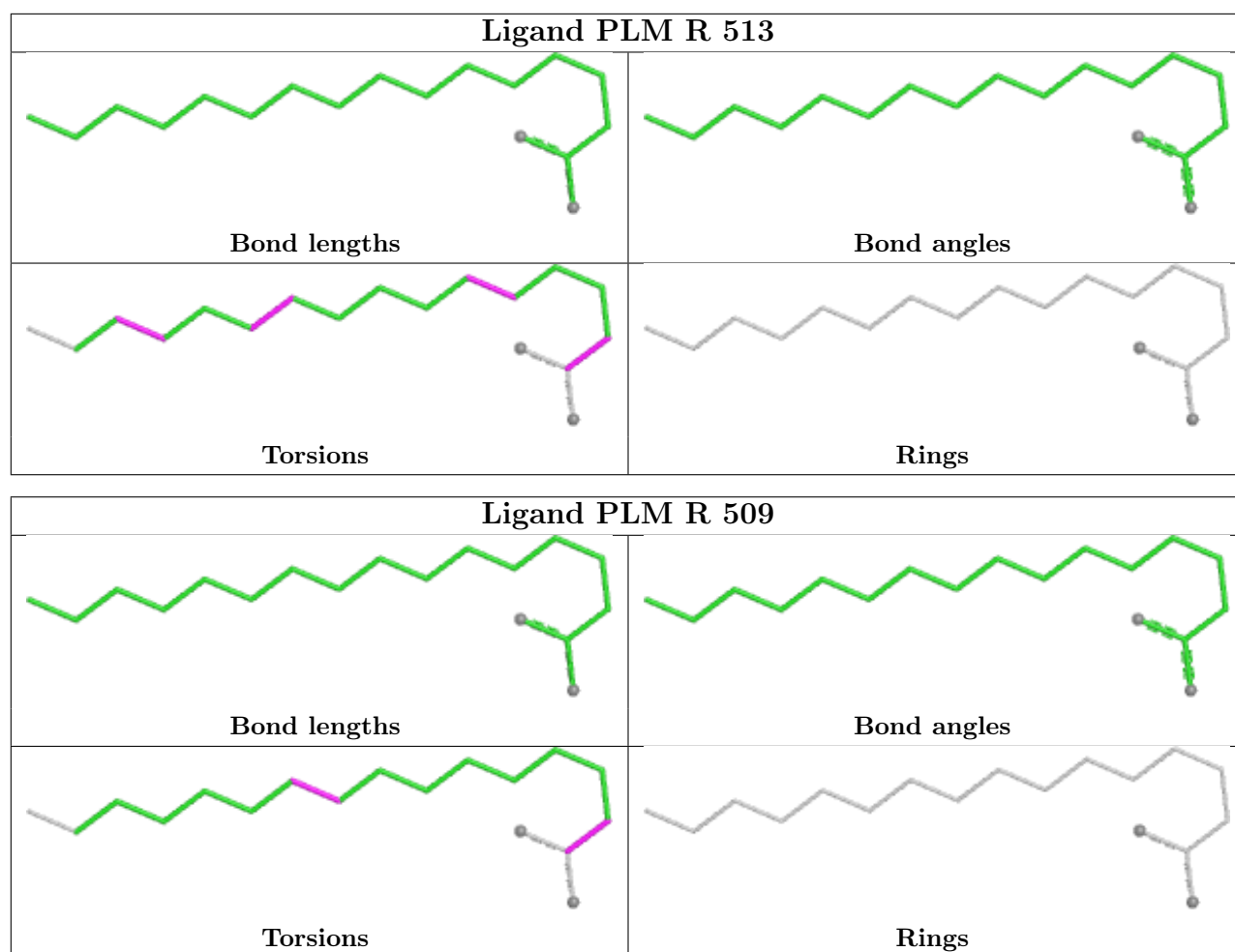
The following is a two-dimensional graphical depiction of Mogul quality analysis of bond lengths, bond angles, torsion angles, and ring geometry for all instances of the Ligand of Interest. In addition, ligands with molecular weight > 250 and outliers as shown on the validation Tables will also be included. For torsion angles, if less than 5% of the Mogul distribution of torsion angles is within 10 degrees of the torsion angle in question, then that torsion angle is considered an outlier. Any bond that is central to one or more torsion angles identified as an outlier by Mogul will be highlighted in the graph. For rings, the root-mean-square deviation (RMSD) between the ring in question and similar rings identified by Mogul is calculated over all ring torsion angles. If the average RMSD is greater than 60 degrees and the minimal RMSD between the ring in question and any Mogul-identified rings is also greater than 60 degrees, then that ring is considered an outlier. The outliers are highlighted in purple. The color gray indicates Mogul did not find sufficient equivalents in the CSD to analyse the geometry.











## 5.7 Other polymers [i](#)

There are no such residues in this entry.

## 5.8 Polymer linkage issues [i](#)

There are no chain breaks in this entry.



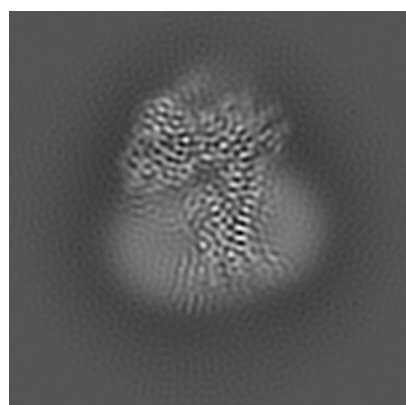
## 6 Map visualisation [i](#)

This section contains visualisations of the EMDB entry EMD-22493. These allow visual inspection of the internal detail of the map and identification of artifacts.

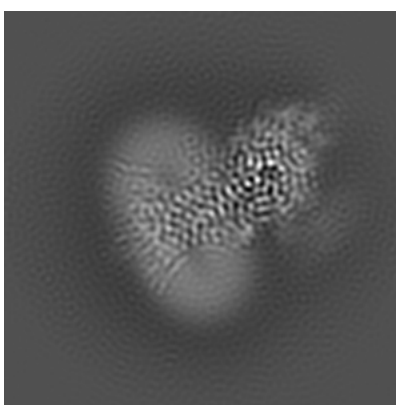
No raw map or half-maps were deposited for this entry and therefore no images, graphs, etc. pertaining to the raw map can be shown.

### 6.1 Orthogonal projections [i](#)

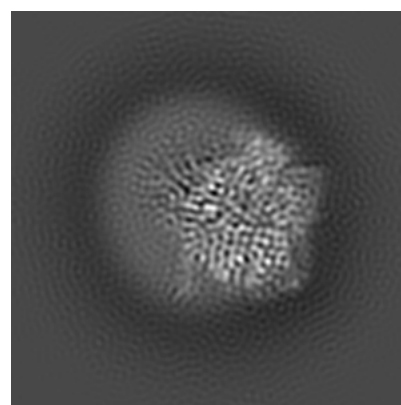
#### 6.1.1 Primary map



X



Y

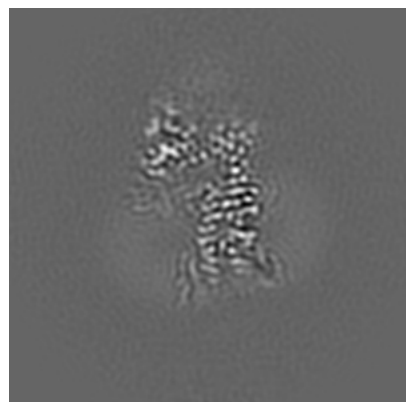


Z

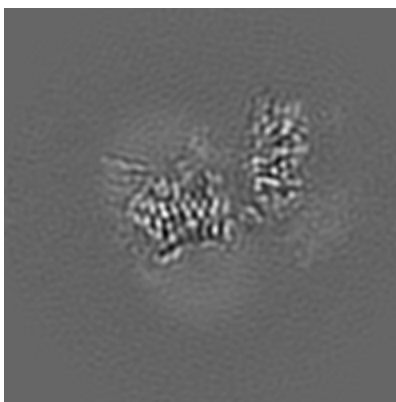
The images above show the map projected in three orthogonal directions.

### 6.2 Central slices [i](#)

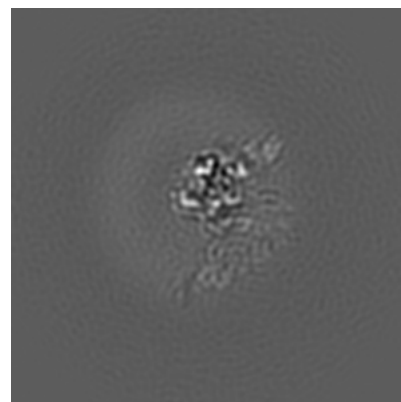
#### 6.2.1 Primary map



X Index: 96



Y Index: 96

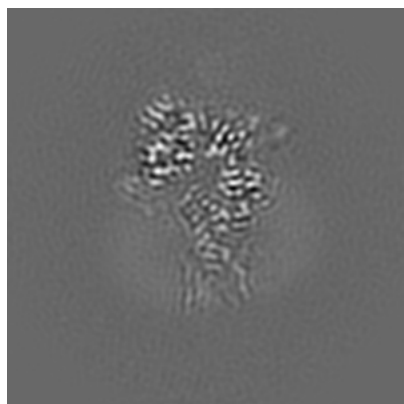


Z Index: 96

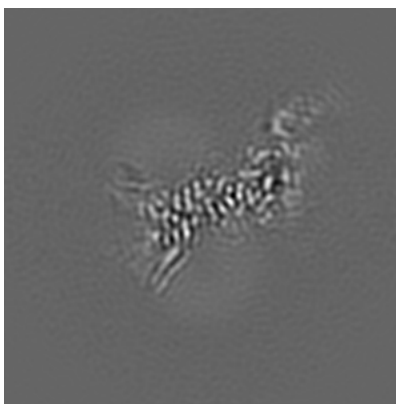
The images above show central slices of the map in three orthogonal directions.

## 6.3 Largest variance slices [i](#)

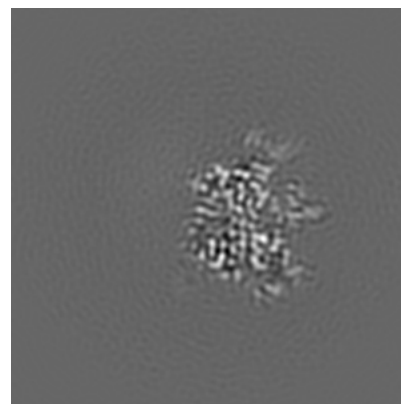
### 6.3.1 Primary map



X Index: 105



Y Index: 110

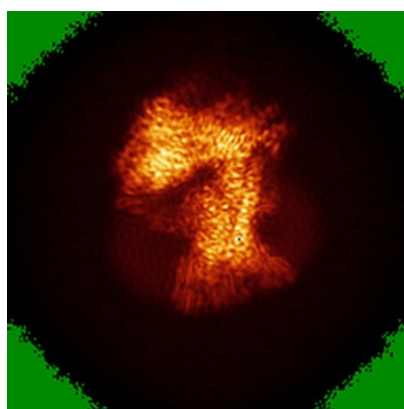


Z Index: 122

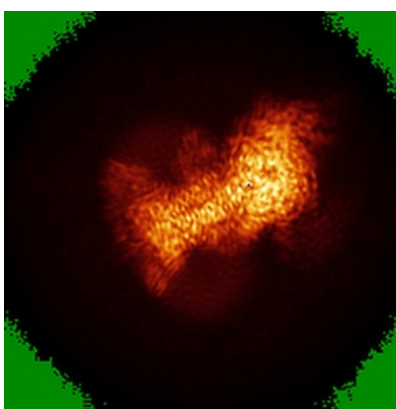
The images above show the largest variance slices of the map in three orthogonal directions.

## 6.4 Orthogonal standard-deviation projections (False-color) [i](#)

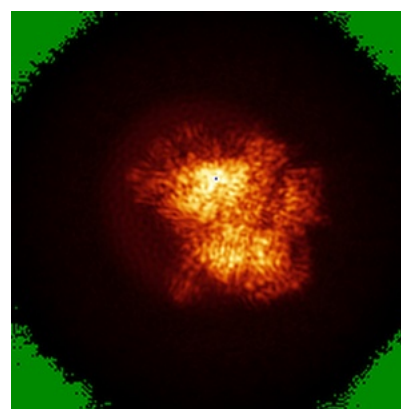
### 6.4.1 Primary map



X



Y



Z

The images above show the map standard deviation projections with false color in three orthogonal directions. Minimum values are shown in green, max in blue, and dark to light orange shades represent small to large values respectively.

## 6.5 Orthogonal surface views [i](#)

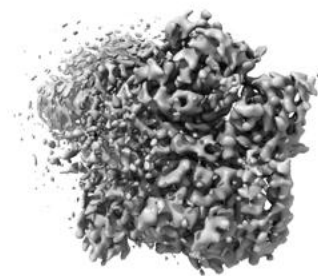
### 6.5.1 Primary map



X



Y



Z

The images above show the 3D surface view of the map at the recommended contour level 0.02. These images, in conjunction with the slice images, may facilitate assessment of whether an appropriate contour level has been provided.

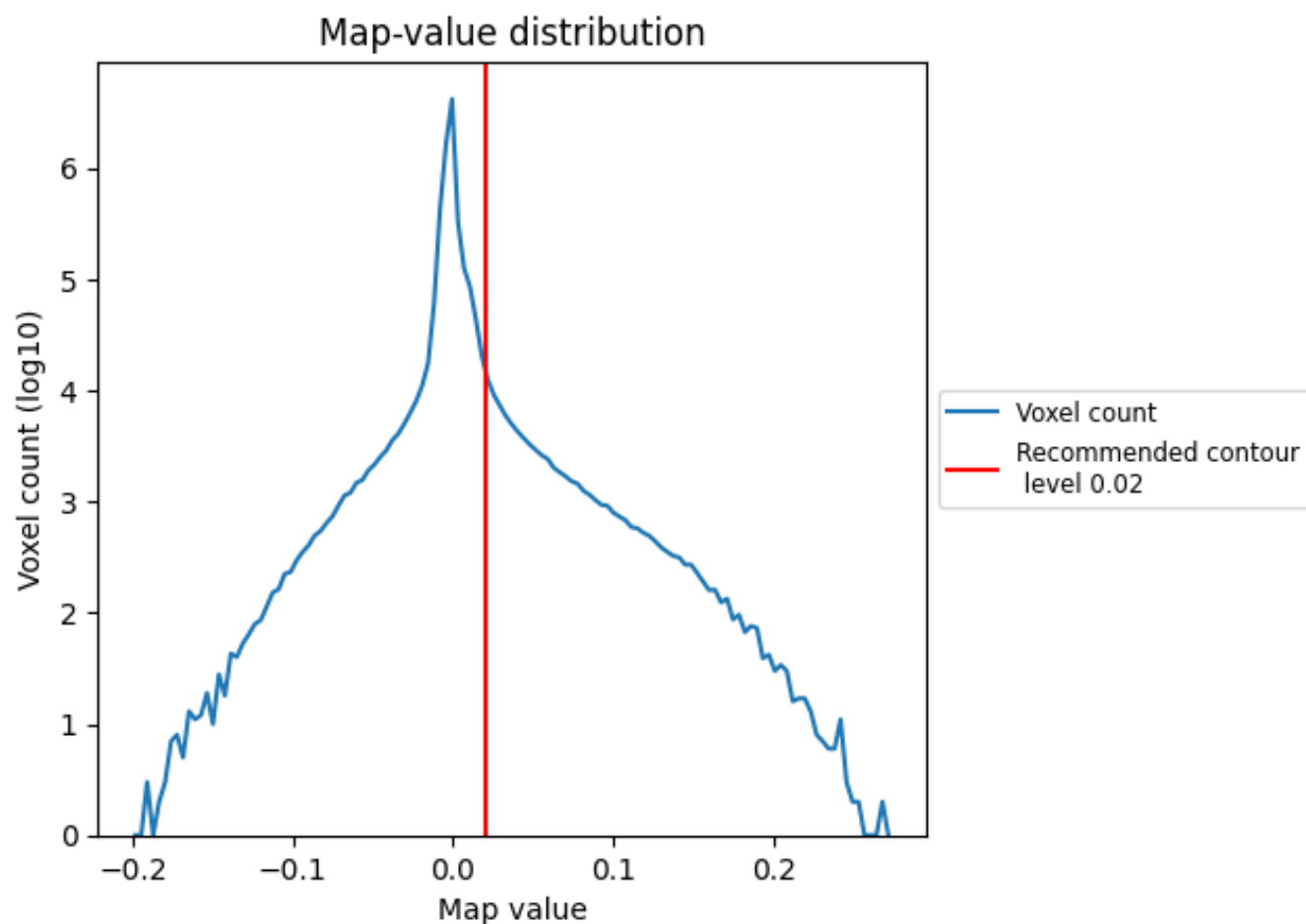
## 6.6 Mask visualisation [i](#)

This section was not generated. No masks/segmentation were deposited.

## 7 Map analysis [i](#)

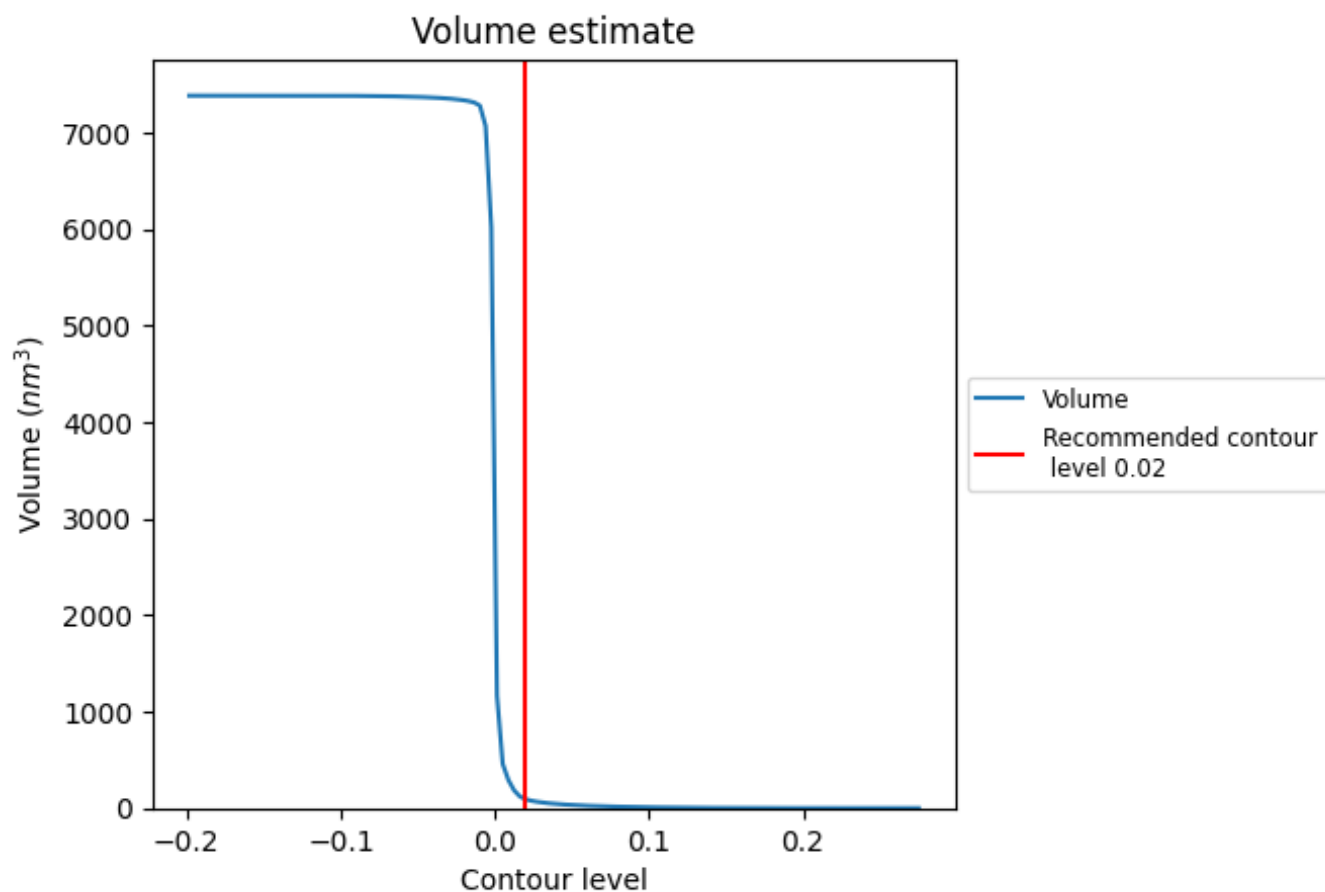
This section contains the results of statistical analysis of the map.

### 7.1 Map-value distribution [i](#)



The map-value distribution is plotted in 128 intervals along the x-axis. The y-axis is logarithmic. A spike in this graph at zero usually indicates that the volume has been masked.

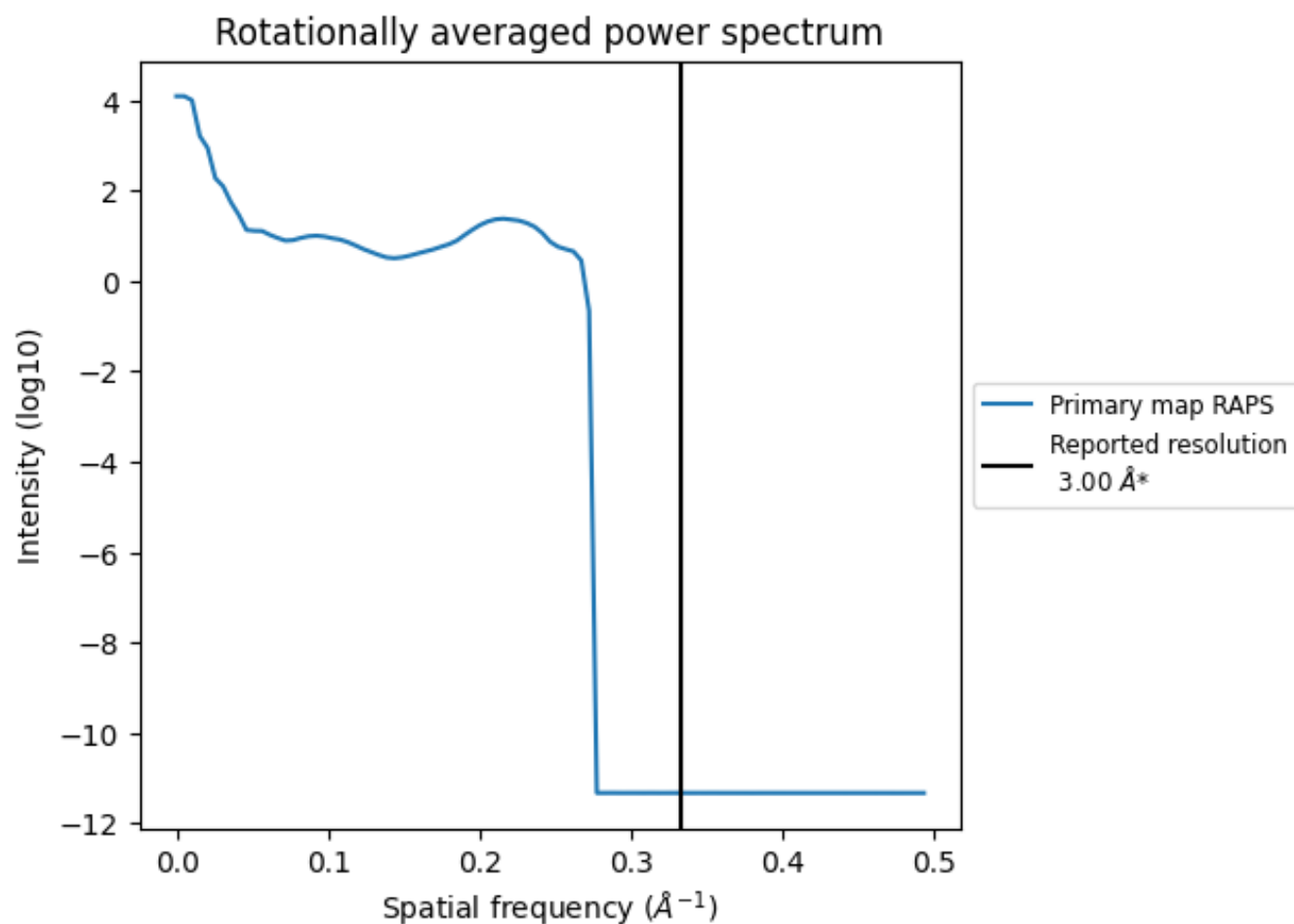
## 7.2 Volume estimate [i](#)



The volume at the recommended contour level is 92  $\text{nm}^3$ ; this corresponds to an approximate mass of 83 kDa.

The volume estimate graph shows how the enclosed volume varies with the contour level. The recommended contour level is shown as a vertical line and the intersection between the line and the curve gives the volume of the enclosed surface at the given level.

### 7.3 Rotationally averaged power spectrum ⓘ



\*Reported resolution corresponds to spatial frequency of 0.333  $\text{\AA}^{-1}$

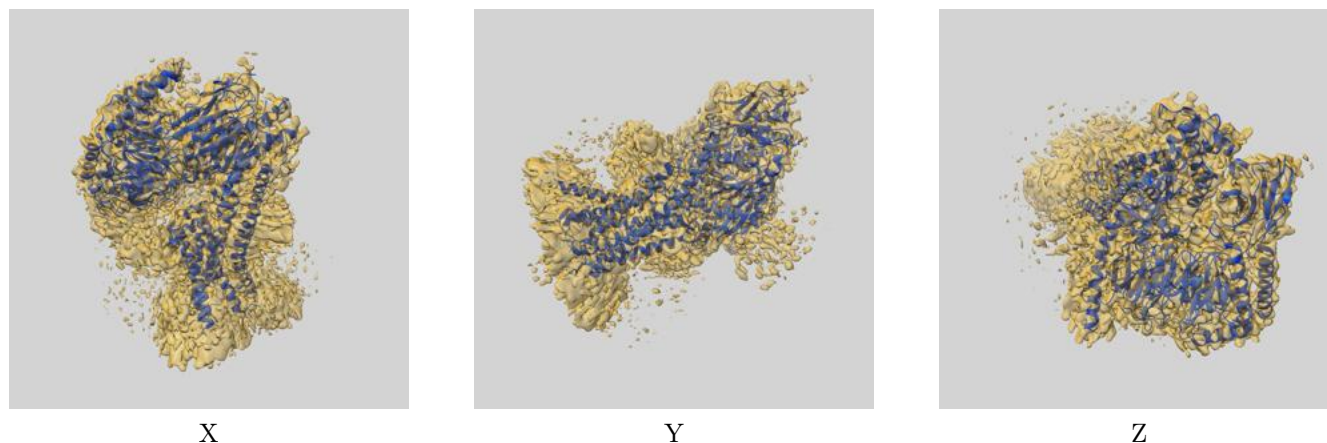
## 8 Fourier-Shell correlation ⓘ

This section was not generated. No FSC curve or half-maps provided.

## 9 Map-model fit [i](#)

This section contains information regarding the fit between EMDB map EMD-22493 and PDB model 7JV5. Per-residue inclusion information can be found in section [3](#) on page [8](#).

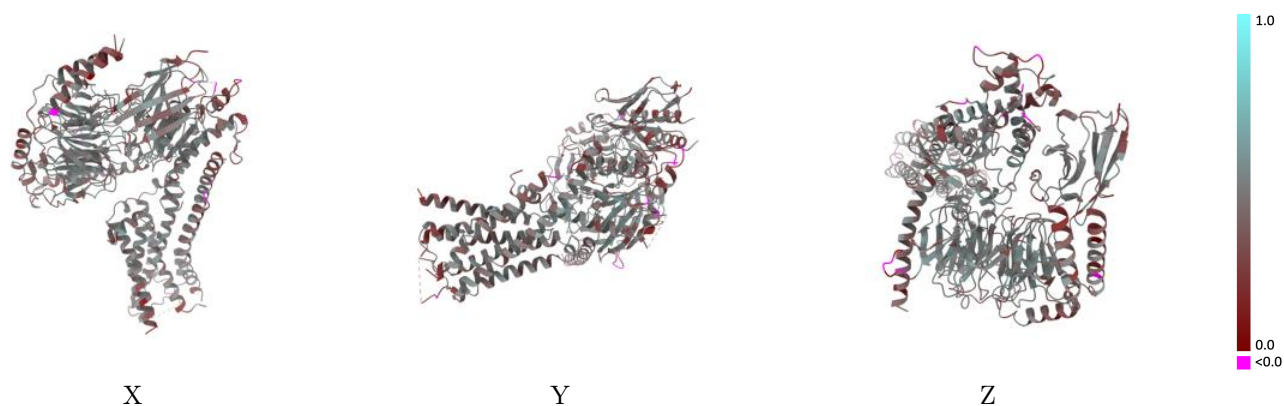
### 9.1 Map-model overlay [i](#)



The images above show the 3D surface view of the map at the recommended contour level 0.02 at 50% transparency in yellow overlaid with a ribbon representation of the model coloured in blue. These images allow for the visual assessment of the quality of fit between the atomic model and the map.

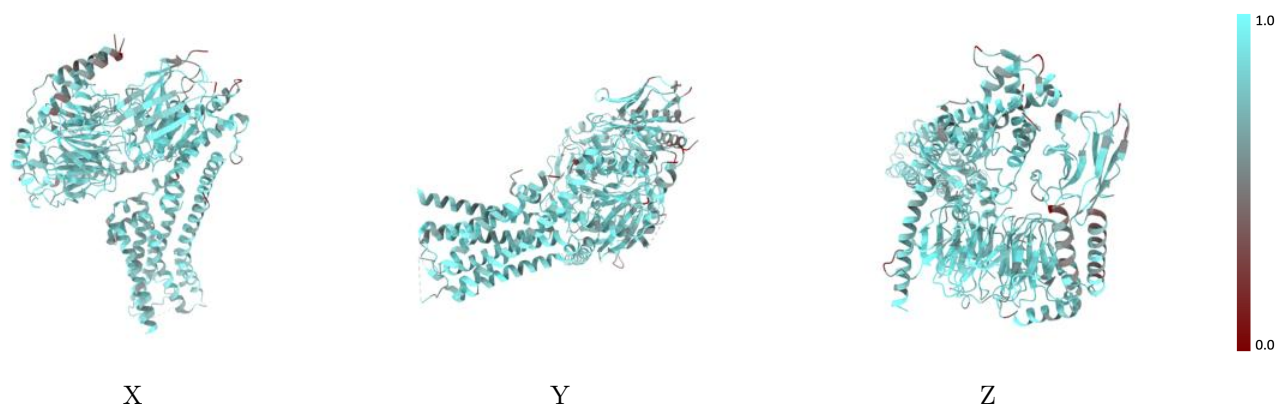


## 9.2 Q-score mapped to coordinate model [i](#)



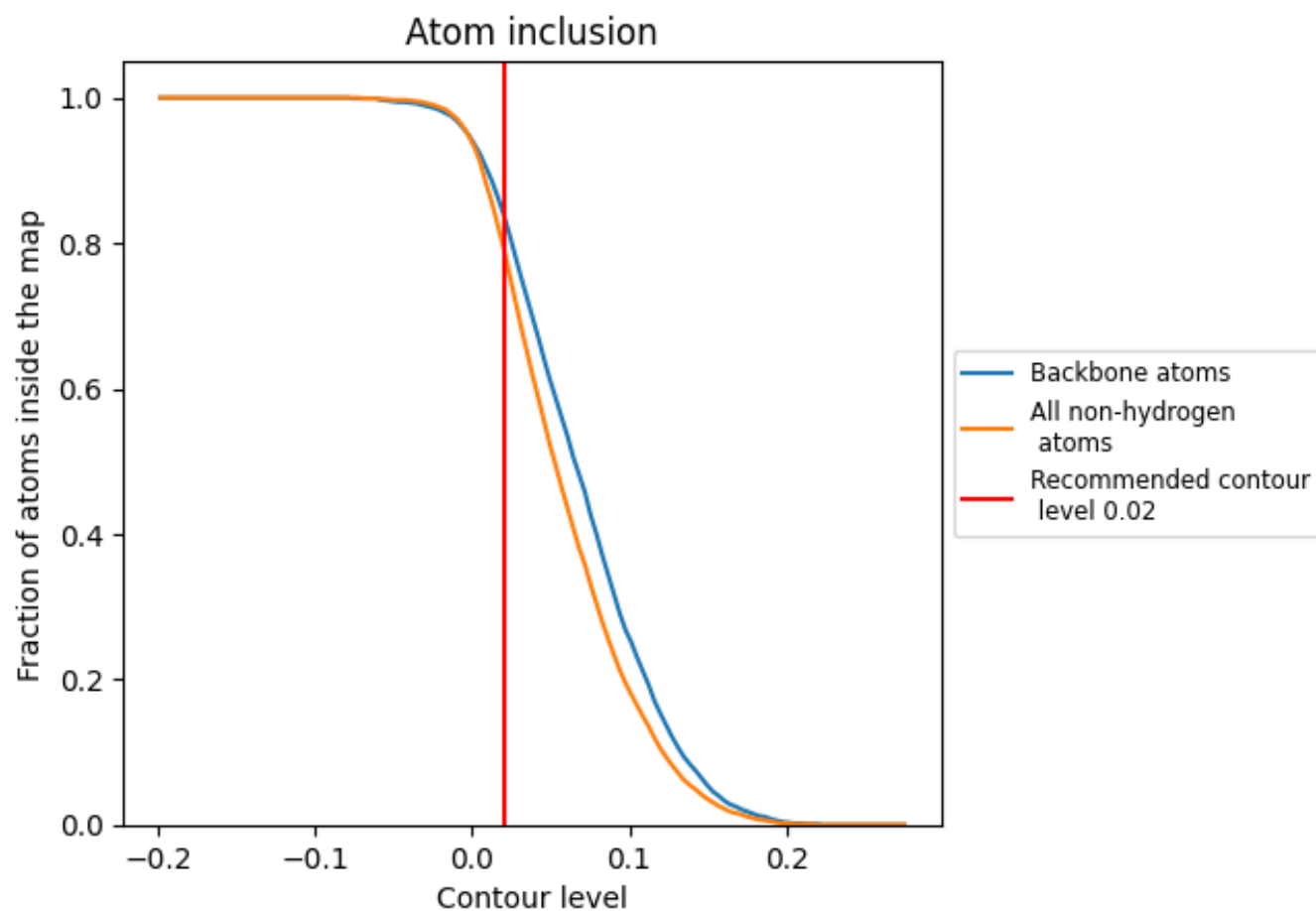
The images above show the model with each residue coloured according to its Q-score. This shows their resolvability in the map with higher Q-score values reflecting better resolvability. Please note: Q-score is calculating the resolvability of atoms, and thus high values are only expected at resolutions at which atoms can be resolved. Low Q-score values may therefore be expected for many entries.

## 9.3 Atom inclusion mapped to coordinate model [i](#)



The images above show the model with each residue coloured according to its atom inclusion. This shows to what extent they are inside the map at the recommended contour level (0.02).

## 9.4 Atom inclusion [i](#)



At the recommended contour level, 84% of all backbone atoms, 79% of all non-hydrogen atoms, are inside the map.

9.5 Map-model fit summary ⓘ

The table lists the average atom inclusion at the recommended contour level (0.02) and Q-score for the entire model and for each chain.

Chain	Atom inclusion	Q-score
All	<div></div> 0.7940	<div></div> 0.4310
A	<div></div> 0.7820	<div></div> 0.4200
B	<div></div> 0.8100	<div></div> 0.4470
G	<div></div> 0.6880	<div></div> 0.3860
N	<div></div> 0.7900	<div></div> 0.4340
R	<div></div> 0.8050	<div></div> 0.4300

