



Full wwPDB X-ray Structure Validation Report ⓘ

Jul 14, 2025 – 04:15 pm BST

PDB ID : 9HUL / pdb_00009hul
Title : Crystal structure of human GSK3b in complex with ARN25423
Authors : Dalle Vedove, A.; Di Martino, R.M.C.; Storici, P.; Girotto, S.; Cavalli, A.; Bottegoni, G.
Deposited on : 2024-12-23
Resolution : 2.90 Å(reported)

This is a Full wwPDB X-ray Structure Validation Report for a publicly released PDB entry.

We welcome your comments at validation@mail.wwpdb.org

A user guide is available at

<https://www.wwpdb.org/validation/2017/XrayValidationReportHelp>

with specific help available everywhere you see the ⓘ symbol.

The types of validation reports are described at

<http://www.wwpdb.org/validation/2017/FAQs#types>.

The following versions of software and data (see [references ⓘ](#)) were used in the production of this report:

MolProbity	:	4-5-2 with Phenix2.0rc1
Mogul	:	1.8.4, CSD as541be (2020)
Xtriage (Phenix)	:	2.0rc1
EDS	:	3.0
buster-report	:	1.1.7 (2018)
Percentile statistics	:	20231227.v01 (using entries in the PDB archive December 27th 2023)
CCP4	:	9.0.006 (Gargrove)
Density-Fitness	:	1.0.12
Ideal geometry (proteins)	:	Engh & Huber (2001)
Ideal geometry (DNA, RNA)	:	Parkinson et al. (1996)
Validation Pipeline (wwPDB-VP)	:	2.44

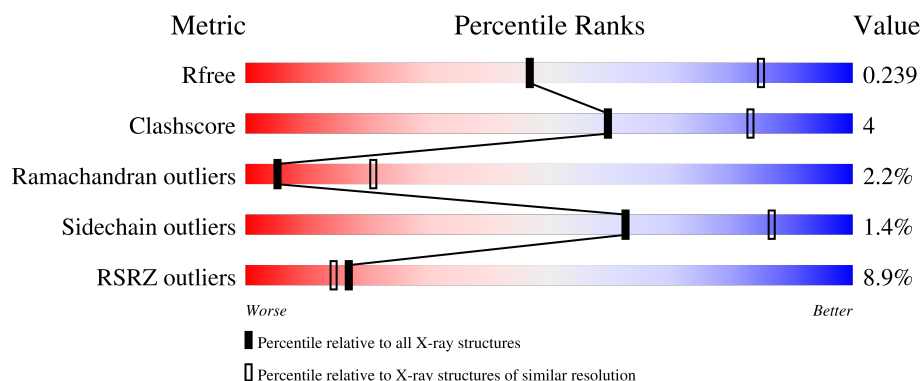
1 Overall quality at a glance

The following experimental techniques were used to determine the structure:

X-RAY DIFFRACTION

The reported resolution of this entry is 2.90 Å.

Percentile scores (ranging between 0-100) for global validation metrics of the entry are shown in the following graphic. The table shows the number of entries on which the scores are based.



Metric	Whole archive (#Entries)	Similar resolution (#Entries, resolution range(Å))
R_{free}	164625	2335 (2.90-2.90)
Clashscore	180529	2564 (2.90-2.90)
Ramachandran outliers	177936	2514 (2.90-2.90)
Sidechain outliers	177891	2516 (2.90-2.90)
RSRZ outliers	164620	2337 (2.90-2.90)

The table below summarises the geometric issues observed across the polymeric chains and their fit to the electron density. The red, orange, yellow and green segments of the lower bar indicate the fraction of residues that contain outliers for ≥ 3 , 2, 1 and 0 types of geometric quality criteria respectively. A grey segment represents the fraction of residues that are not modelled. The numeric value for each fraction is indicated below the corresponding segment, with a dot representing fractions $\leq 5\%$. The upper red bar (where present) indicates the fraction of residues that have poor fit to the electron density. The numeric value is given above the bar.

Mol	Chain	Length	Quality of chain
1	A	442	<div> <div>6%</div> <div>71%</div> <div>10%</div> <div>18%</div> </div>
1	B	442	<div> <div>8%</div> <div>69%</div> <div>12%</div> <div>19%</div> </div>

2 Entry composition

There are 2 unique types of molecules in this entry. The entry contains 5827 atoms, of which 0 are hydrogens and 0 are deuteriums.

In the tables below, the ZeroOcc column contains the number of atoms modelled with zero occupancy, the AltConf column contains the number of residues with at least one atom in alternate conformation and the Trace column contains the number of residues modelled with at most 2 atoms.

- Molecule 1 is a protein called Glycogen synthase kinase-3 beta.

Mol	Chain	Residues	Atoms					ZeroOcc	AltConf	Trace
1	A	361	Total	C	N	O	S	0	0	0
			2889	1853	498	526	12			
1	B	358	Total	C	N	O	S	0	0	0
			2866	1839	494	521	12			

There are 46 discrepancies between the modelled and reference sequences:

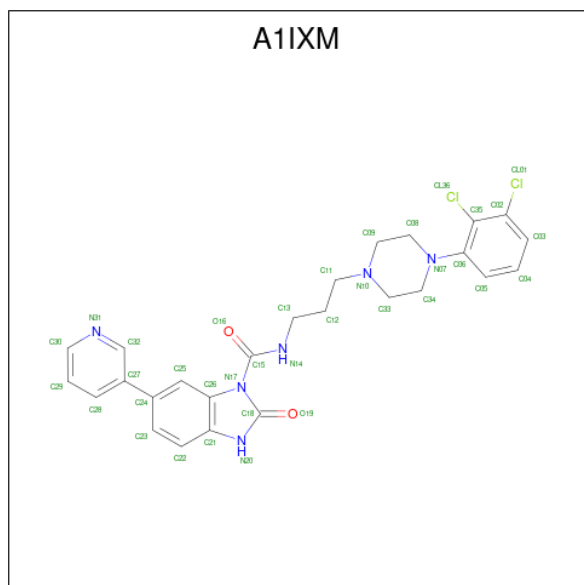
Chain	Residue	Modelled	Actual	Comment	Reference
A	-21	MET	-	initiating methionine	UNP P49841
A	-20	GLY	-	expression tag	UNP P49841
A	-19	HIS	-	expression tag	UNP P49841
A	-18	HIS	-	expression tag	UNP P49841
A	-17	HIS	-	expression tag	UNP P49841
A	-16	HIS	-	expression tag	UNP P49841
A	-15	HIS	-	expression tag	UNP P49841
A	-14	HIS	-	expression tag	UNP P49841
A	-13	SER	-	expression tag	UNP P49841
A	-12	SER	-	expression tag	UNP P49841
A	-11	GLY	-	expression tag	UNP P49841
A	-10	VAL	-	expression tag	UNP P49841
A	-9	ASP	-	expression tag	UNP P49841
A	-8	LEU	-	expression tag	UNP P49841
A	-7	GLY	-	expression tag	UNP P49841
A	-6	THR	-	expression tag	UNP P49841
A	-5	GLU	-	expression tag	UNP P49841
A	-4	ASN	-	expression tag	UNP P49841
A	-3	LEU	-	expression tag	UNP P49841
A	-2	TYR	-	expression tag	UNP P49841
A	-1	PHE	-	expression tag	UNP P49841
A	0	GLN	-	expression tag	UNP P49841
A	1	SER	-	expression tag	UNP P49841
B	-21	MET	-	initiating methionine	UNP P49841
B	-20	GLY	-	expression tag	UNP P49841

Continued on next page...

Continued from previous page...

Chain	Residue	Modelled	Actual	Comment	Reference
B	-19	HIS	-	expression tag	UNP P49841
B	-18	HIS	-	expression tag	UNP P49841
B	-17	HIS	-	expression tag	UNP P49841
B	-16	HIS	-	expression tag	UNP P49841
B	-15	HIS	-	expression tag	UNP P49841
B	-14	HIS	-	expression tag	UNP P49841
B	-13	SER	-	expression tag	UNP P49841
B	-12	SER	-	expression tag	UNP P49841
B	-11	GLY	-	expression tag	UNP P49841
B	-10	VAL	-	expression tag	UNP P49841
B	-9	ASP	-	expression tag	UNP P49841
B	-8	LEU	-	expression tag	UNP P49841
B	-7	GLY	-	expression tag	UNP P49841
B	-6	THR	-	expression tag	UNP P49841
B	-5	GLU	-	expression tag	UNP P49841
B	-4	ASN	-	expression tag	UNP P49841
B	-3	LEU	-	expression tag	UNP P49841
B	-2	TYR	-	expression tag	UNP P49841
B	-1	PHE	-	expression tag	UNP P49841
B	0	GLN	-	expression tag	UNP P49841
B	1	SER	-	expression tag	UNP P49841

- Molecule 2 is {N}-[3-[4-[2,3-bis(chloranyl)phenyl]piperazin-1-yl]propyl]-2-oxidanylidene-6-pyridin-3-yl-3 {H}-benzimidazole-1-carboxamide (CCD ID: A1IXM) (formula: C₂₆H₂₆Cl₂N₆O₂) (labeled as "Ligand of Interest" by depositor).

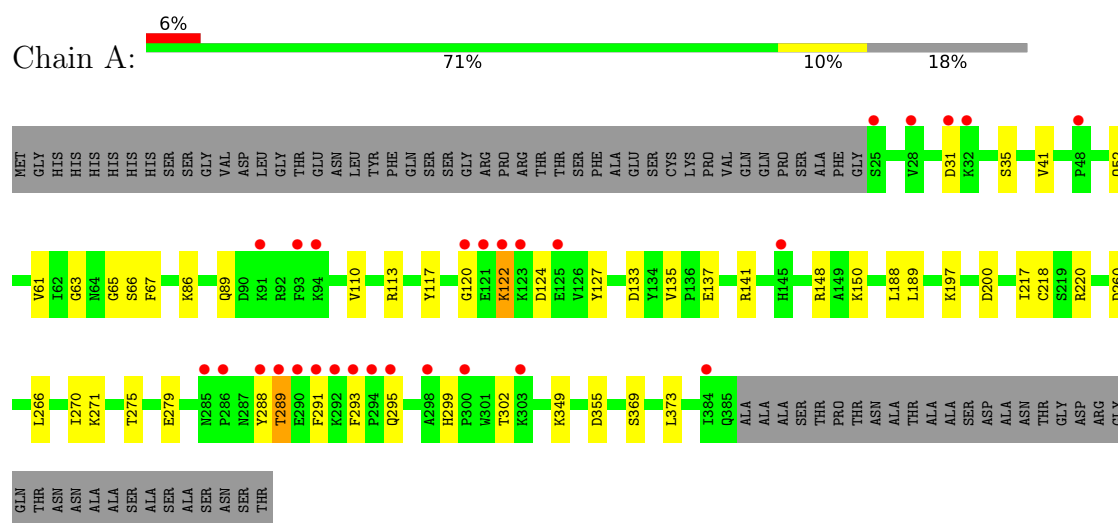


Mol	Chain	Residues	Atoms					ZeroOcc	AltConf
2	A	1	Total	C	Cl	N	O	0	0
			36	26	2	6	2		
2	B	1	Total	C	Cl	N	O	0	0
			36	26	2	6	2		

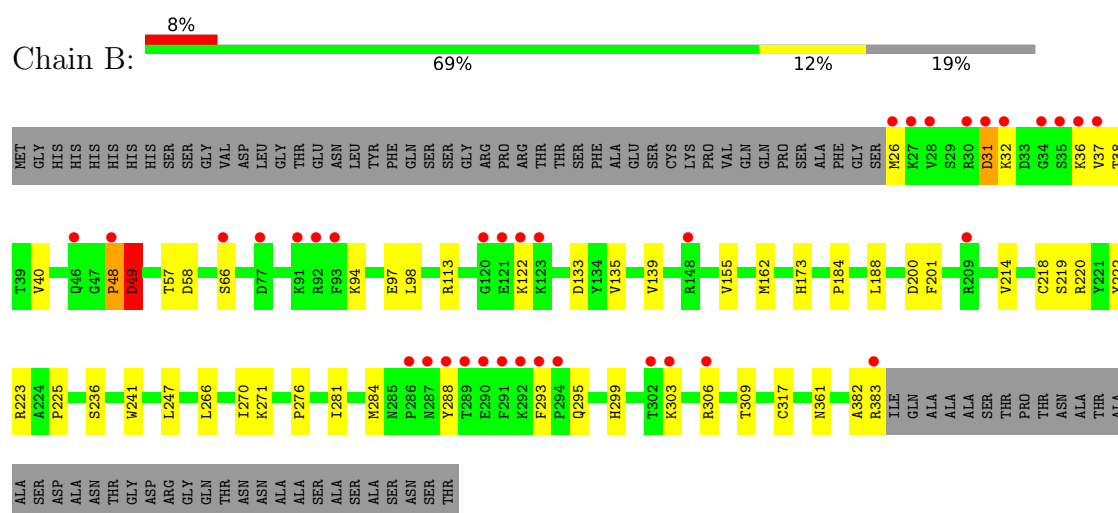
3 Residue-property plots [i](#)

These plots are drawn for all protein, RNA, DNA and oligosaccharide chains in the entry. The first graphic for a chain summarises the proportions of the various outlier classes displayed in the second graphic. The second graphic shows the sequence view annotated by issues in geometry and electron density. Residues are color-coded according to the number of geometric quality criteria for which they contain at least one outlier: green = 0, yellow = 1, orange = 2 and red = 3 or more. A red dot above a residue indicates a poor fit to the electron density ($RSRZ > 2$). Stretches of 2 or more consecutive residues without any outlier are shown as a green connector. Residues present in the sample, but not in the model, are shown in grey.

• Molecule 1: Glycogen synthase kinase-3 beta



• Molecule 1: Glycogen synthase kinase-3 beta



4 Data and refinement statistics

Property	Value	Source
Space group	P 21 21 21	Depositor
Cell constants a, b, c, α , β , γ	82.44Å 85.86Å 178.02Å 90.00° 90.00° 90.00°	Depositor
Resolution (Å)	44.51 – 2.90 44.51 – 2.90	Depositor EDS
% Data completeness (in resolution range)	99.6 (44.51-2.90) 99.6 (44.51-2.90)	Depositor EDS
R_{merge}	(Not available)	Depositor
R_{sym}	(Not available)	Depositor
$\langle I/\sigma(I) \rangle$ ¹	1.43 (at 2.25Å)	Xtriage
Refinement program	PHENIX (1.19.2_4158: ???)	Depositor
R, R_{free}	0.216 , 0.244 0.213 , 0.239	Depositor DCC
R_{free} test set	1438 reflections (5.00%)	wwPDB-VP
Wilson B-factor (Å ²)	44.8	Xtriage
Anisotropy	0.062	Xtriage
Bulk solvent k_{sol} (e/Å ³), B_{sol} (Å ²)	0.34 , 38.1	EDS
L-test for twinning ²	$\langle L \rangle = 0.50$, $\langle L^2 \rangle = 0.34$	Xtriage
Estimated twinning fraction	0.013 for k,h,-l	Xtriage
F_o, F_c correlation	0.92	EDS
Total number of atoms	5827	wwPDB-VP
Average B, all atoms (Å ²)	44.0	wwPDB-VP

Xtriage's analysis on translational NCS is as follows: *The largest off-origin peak in the Patterson function is 3.54% of the height of the origin peak. No significant pseudotranslation is detected.*

¹Intensities estimated from amplitudes.

²Theoretical values of $\langle |L| \rangle$, $\langle L^2 \rangle$ for acentric reflections are 0.5, 0.333 respectively for untwinned datasets, and 0.375, 0.2 for perfectly twinned datasets.

5 Model quality [i](#)

5.1 Standard geometry [i](#)

Bond lengths and bond angles in the following residue types are not validated in this section: A1IXM

The Z score for a bond length (or angle) is the number of standard deviations the observed value is removed from the expected value. A bond length (or angle) with $|Z| > 5$ is considered an outlier worth inspection. RMSZ is the root-mean-square of all Z scores of the bond lengths (or angles).

Mol	Chain	Bond lengths		Bond angles	
		RMSZ	$\# Z > 5$	RMSZ	$\# Z > 5$
1	A	0.11	0/2960	0.29	0/4022
1	B	0.14	0/2937	0.34	1/3991 (0.0%)
All	All	0.13	0/5897	0.32	1/8013 (0.0%)

There are no bond length outliers.

All (1) bond angle outliers are listed below:

Mol	Chain	Res	Type	Atoms	Z	Observed(°)	Ideal(°)
1	B	200	ASP	N-CA-C	7.67	119.89	110.91

There are no chirality outliers.

There are no planarity outliers.

5.2 Too-close contacts [i](#)

In the following table, the Non-H and H(model) columns list the number of non-hydrogen atoms and hydrogen atoms in the chain respectively. The H(added) column lists the number of hydrogen atoms added and optimized by MolProbity. The Clashes column lists the number of clashes within the asymmetric unit, whereas Symm-Clashes lists symmetry-related clashes.

Mol	Chain	Non-H	H(model)	H(added)	Clashes	Symm-Clashes
1	A	2889	0	2919	24	0
1	B	2866	0	2895	27	0
2	A	36	0	0	0	0
2	B	36	0	0	0	0
All	All	5827	0	5814	49	0

The all-atom clashscore is defined as the number of clashes found per 1000 atoms (including hydrogen atoms). The all-atom clashscore for this structure is 4.

All (49) close contacts within the same asymmetric unit are listed below, sorted by their clash magnitude.

Atom-1	Atom-2	Interatomic distance (Å)	Clash overlap (Å)
1:B:113:ARG:NH1	1:B:133:ASP:OD1	2.22	0.72
1:B:94:LYS:HE2	1:B:98:LEU:HD23	1.75	0.66
1:B:162:MET:HE2	1:B:247:LEU:HB2	1.76	0.66
1:A:349:LYS:NZ	1:A:355:ASP:OD1	2.33	0.61
1:B:26:MET:HB2	1:B:40:VAL:HG12	1.83	0.58
1:A:266:LEU:O	1:A:270:ILE:HG12	2.04	0.56
1:B:32:LYS:O	1:B:32:LYS:HG2	2.07	0.54
1:A:137:GLU:O	1:A:189:LEU:N	2.39	0.54
1:A:110:VAL:HG21	1:A:188:LEU:HD12	1.91	0.52
1:A:113:ARG:NH1	1:A:133:ASP:OD1	2.40	0.52
1:A:279:GLU:CD	1:A:279:GLU:H	2.18	0.51
1:A:89:GLN:HE21	1:A:117:TYR:HE1	1.59	0.51
1:A:289:THR:HB	1:B:214:VAL:HG12	1.92	0.50
1:A:293:PHE:O	1:A:295:GLN:NE2	2.45	0.50
1:A:271:LYS:O	1:A:299:HIS:HB2	2.12	0.50
1:B:293:PHE:O	1:B:295:GLN:NE2	2.45	0.49
1:A:61:VAL:HG12	1:A:63:GLY:H	1.79	0.48
1:A:291:PHE:HB2	1:B:214:VAL:HG11	1.96	0.48
1:A:110:VAL:HG23	1:A:197:LYS:HB3	1.96	0.48
1:B:26:MET:HE2	1:B:38:THR:HG21	1.96	0.48
1:B:306:ARG:NH1	1:B:309:THR:OG1	2.48	0.47
1:A:137:GLU:OE2	1:A:141:ARG:NH2	2.38	0.47
1:B:271:LYS:O	1:B:299:HIS:HB2	2.13	0.47
1:A:135:VAL:HB	1:A:188:LEU:HB3	1.96	0.47
1:B:361:ASN:HA	1:B:383:ARG:HH22	1.80	0.47
1:B:37:VAL:HG22	1:B:57:THR:HB	1.97	0.47
1:B:139:VAL:HG12	1:B:184:PRO:HB3	1.97	0.47
1:B:266:LEU:O	1:B:270:ILE:HG12	2.16	0.46
1:A:220:ARG:HH12	1:A:260:ASP:HA	1.80	0.45
1:A:86:LYS:HG2	1:A:127:TYR:HD2	1.82	0.45
1:B:135:VAL:HB	1:B:188:LEU:HB3	1.99	0.44
1:A:148:ARG:HD2	1:A:148:ARG:HA	1.78	0.44
1:B:173:HIS:CE1	1:B:236:SER:HB3	2.53	0.44
1:B:225:PRO:HB2	1:B:284:MET:SD	2.58	0.44
1:B:97:GLU:HG3	1:B:201:PHE:C	2.42	0.43
1:A:65:GLY:O	1:A:67:PHE:N	2.51	0.43
1:B:219:SER:O	1:B:223:ARG:HG3	2.19	0.43
1:B:31:ASP:HB3	1:B:32:LYS:H	1.51	0.43
1:B:57:THR:OG1	1:B:58:ASP:N	2.52	0.43
1:B:220:ARG:C	1:B:222:TYR:H	2.27	0.42

Continued on next page...

Continued from previous page...

Atom-1	Atom-2	Interatomic distance (Å)	Clash overlap (Å)
1:B:225:PRO:HD3	1:B:241:TRP:CE2	2.54	0.42
1:A:150:LYS:HB2	1:A:150:LYS:HE2	1.83	0.42
1:B:48:PRO:HB2	1:B:49:ASP:H	1.70	0.41
1:A:122:LYS:C	1:A:124:ASP:H	2.27	0.41
1:A:373:LEU:HD23	1:A:373:LEU:HA	1.92	0.41
1:A:122:LYS:O	1:A:124:ASP:N	2.47	0.41
1:B:276:PRO:HG2	1:B:281:ILE:HD11	2.03	0.40
1:A:41:VAL:HA	1:A:52:GLN:O	2.21	0.40
1:B:299:HIS:HE1	1:B:303:LYS:HE3	1.87	0.40

There are no symmetry-related clashes.

5.3 Torsion angles

5.3.1 Protein backbone

In the following table, the Percentiles column shows the percent Ramachandran outliers of the chain as a percentile score with respect to all X-ray entries followed by that with respect to entries of similar resolution.

The Analysed column shows the number of residues for which the backbone conformation was analysed, and the total number of residues.

Mol	Chain	Analysed	Favoured	Allowed	Outliers	Percentiles	
1	A	359/442 (81%)	335 (93%)	17 (5%)	7 (2%)	6	24
1	B	356/442 (80%)	325 (91%)	22 (6%)	9 (2%)	4	18
All	All	715/884 (81%)	660 (92%)	39 (6%)	16 (2%)	5	21

All (16) Ramachandran outliers are listed below:

Mol	Chain	Res	Type
1	A	122	LYS
1	B	48	PRO
1	A	66	SER
1	B	49	ASP
1	B	382	ALA
1	A	35	SER
1	A	288	TYR
1	B	36	LYS
1	B	66	SER

Continued on next page...

Continued from previous page...

Mol	Chain	Res	Type
1	A	200	ASP
1	B	122	LYS
1	B	288	TYR
1	A	218	CYS
1	B	31	ASP
1	B	218	CYS
1	A	120	GLY

5.3.2 Protein sidechains ⓘ

In the following table, the Percentiles column shows the percent sidechain outliers of the chain as a percentile score with respect to all X-ray entries followed by that with respect to entries of similar resolution.

The Analysed column shows the number of residues for which the sidechain conformation was analysed, and the total number of residues.

Mol	Chain	Analysed	Rotameric	Outliers	Percentiles	
1	A	322/383 (84%)	316 (98%)	6 (2%)	52	81
1	B	319/383 (83%)	316 (99%)	3 (1%)	75	92
All	All	641/766 (84%)	632 (99%)	9 (1%)	62	86

All (9) residues with a non-rotameric sidechain are listed below:

Mol	Chain	Res	Type
1	A	31	ASP
1	A	217	ILE
1	A	275	THR
1	A	289	THR
1	A	302	THR
1	A	369	SER
1	B	49	ASP
1	B	155	VAL
1	B	317	CYS

Sometimes sidechains can be flipped to improve hydrogen bonding and reduce clashes. All (8) such sidechains are listed below:

Mol	Chain	Res	Type
1	A	52	GLN
1	A	108	ASN

Continued on next page...

Continued from previous page...

Mol	Chain	Res	Type
1	A	145	HIS
1	A	213	ASN
1	A	299	HIS
1	B	108	ASN
1	B	365	GLN
1	B	381	HIS

5.3.3 RNA ⓘ

There are no RNA molecules in this entry.

5.4 Non-standard residues in protein, DNA, RNA chains ⓘ

There are no non-standard protein/DNA/RNA residues in this entry.

5.5 Carbohydrates ⓘ

There are no oligosaccharides in this entry.

5.6 Ligand geometry ⓘ

2 ligands are modelled in this entry.

In the following table, the Counts columns list the number of bonds (or angles) for which Mogul statistics could be retrieved, the number of bonds (or angles) that are observed in the model and the number of bonds (or angles) that are defined in the Chemical Component Dictionary. The Link column lists molecule types, if any, to which the group is linked. The Z score for a bond length (or angle) is the number of standard deviations the observed value is removed from the expected value. A bond length (or angle) with $|Z| > 2$ is considered an outlier worth inspection. RMSZ is the root-mean-square of all Z scores of the bond lengths (or angles).

Mol	Type	Chain	Res	Link	Bond lengths			Bond angles		
					Counts	RMSZ	# Z > 2	Counts	RMSZ	# Z > 2
2	A1IXM	A	501	-	40,40,40	2.65	18 (45%)	55,56,56	1.53	11 (20%)
2	A1IXM	B	501	-	40,40,40	2.64	17 (42%)	55,56,56	2.08	11 (20%)

In the following table, the Chirals column lists the number of chiral outliers, the number of chiral centers analysed, the number of these observed in the model and the number defined in the Chemical Component Dictionary. Similar counts are reported in the Torsion and Rings columns. '-' means no outliers of that kind were identified.

Mol	Type	Chain	Res	Link	Chirals	Torsions	Rings
2	A1IXM	A	501	-	-	7/19/29/29	0/5/5/5
2	A1IXM	B	501	-	-	4/19/29/29	0/5/5/5

All (35) bond length outliers are listed below:

Mol	Chain	Res	Type	Atoms	Z	Observed(Å)	Ideal(Å)
2	A	501	A1IXM	C11-N10	-7.30	1.30	1.47
2	B	501	A1IXM	C11-N10	-7.15	1.31	1.47
2	A	501	A1IXM	C18-N20	5.34	1.43	1.37
2	B	501	A1IXM	C18-N20	5.23	1.42	1.37
2	A	501	A1IXM	C21-N20	4.65	1.47	1.38
2	B	501	A1IXM	C06-N07	4.62	1.51	1.41
2	B	501	A1IXM	C15-N17	4.62	1.49	1.43
2	B	501	A1IXM	C21-N20	4.61	1.47	1.38
2	A	501	A1IXM	C15-N17	4.55	1.48	1.43
2	A	501	A1IXM	C06-N07	4.42	1.51	1.41
2	B	501	A1IXM	C33-N10	-3.87	1.36	1.46
2	A	501	A1IXM	C33-N10	-3.80	1.36	1.46
2	B	501	A1IXM	C35-CL36	3.77	1.81	1.72
2	A	501	A1IXM	C15-N14	3.72	1.51	1.34
2	B	501	A1IXM	C15-N14	3.72	1.51	1.34
2	A	501	A1IXM	C35-CL36	3.56	1.80	1.72
2	B	501	A1IXM	O19-C18	-3.41	1.16	1.23
2	A	501	A1IXM	O19-C18	-3.38	1.16	1.23
2	B	501	A1IXM	C25-C24	3.06	1.45	1.39
2	A	501	A1IXM	O16-C15	-2.95	1.17	1.23
2	B	501	A1IXM	O16-C15	-2.94	1.17	1.23
2	B	501	A1IXM	C09-N10	-2.92	1.38	1.46
2	A	501	A1IXM	C18-N17	2.83	1.44	1.40
2	A	501	A1IXM	C25-C24	2.81	1.44	1.39
2	B	501	A1IXM	C18-N17	2.78	1.44	1.40
2	A	501	A1IXM	C09-N10	-2.66	1.39	1.46
2	B	501	A1IXM	C26-N17	2.45	1.46	1.42
2	A	501	A1IXM	C06-C35	-2.41	1.38	1.40
2	B	501	A1IXM	C02-CL01	2.34	1.79	1.73
2	A	501	A1IXM	C02-CL01	2.32	1.79	1.73
2	A	501	A1IXM	C26-N17	2.30	1.46	1.42
2	A	501	A1IXM	C22-C21	2.25	1.43	1.39
2	A	501	A1IXM	C27-C24	-2.19	1.43	1.49
2	B	501	A1IXM	C22-C21	2.19	1.43	1.39
2	B	501	A1IXM	C27-C24	-2.07	1.43	1.49

All (22) bond angle outliers are listed below:

Mol	Chain	Res	Type	Atoms	Z	Observed(°)	Ideal(°)
2	B	501	A1IXM	C35-C06-N07	8.52	126.14	119.71
2	B	501	A1IXM	C34-N07-C06	5.34	128.94	116.27
2	B	501	A1IXM	C05-C06-N07	-4.58	115.00	122.30
2	B	501	A1IXM	C21-N20-C18	-3.95	107.89	110.28
2	B	501	A1IXM	N20-C18-N17	3.85	108.20	106.37
2	A	501	A1IXM	C21-N20-C18	-3.63	108.09	110.28
2	B	501	A1IXM	C06-C35-CL36	3.54	123.86	120.09
2	A	501	A1IXM	C33-N10-C09	3.53	116.77	108.83
2	A	501	A1IXM	N20-C18-N17	3.46	108.02	106.37
2	A	501	A1IXM	C26-N17-C18	-2.83	107.78	109.24
2	A	501	A1IXM	C08-C09-N10	2.82	116.43	110.64
2	B	501	A1IXM	C26-N17-C18	-2.68	107.86	109.24
2	A	501	A1IXM	C08-N07-C06	2.53	122.26	116.27
2	B	501	A1IXM	C30-N31-C32	2.51	121.19	116.85
2	B	501	A1IXM	C29-C28-C27	-2.50	117.41	120.56
2	A	501	A1IXM	C29-C28-C27	-2.50	117.42	120.56
2	A	501	A1IXM	C30-N31-C32	2.48	121.14	116.85
2	B	501	A1IXM	C02-C35-CL36	-2.42	116.91	120.02
2	A	501	A1IXM	C34-N07-C08	-2.28	106.49	111.52
2	A	501	A1IXM	C05-C06-C35	2.15	119.67	117.69
2	A	501	A1IXM	C21-C26-N17	2.04	108.36	106.20
2	B	501	A1IXM	C06-C35-C02	-2.04	119.24	120.33

There are no chirality outliers.

All (11) torsion outliers are listed below:

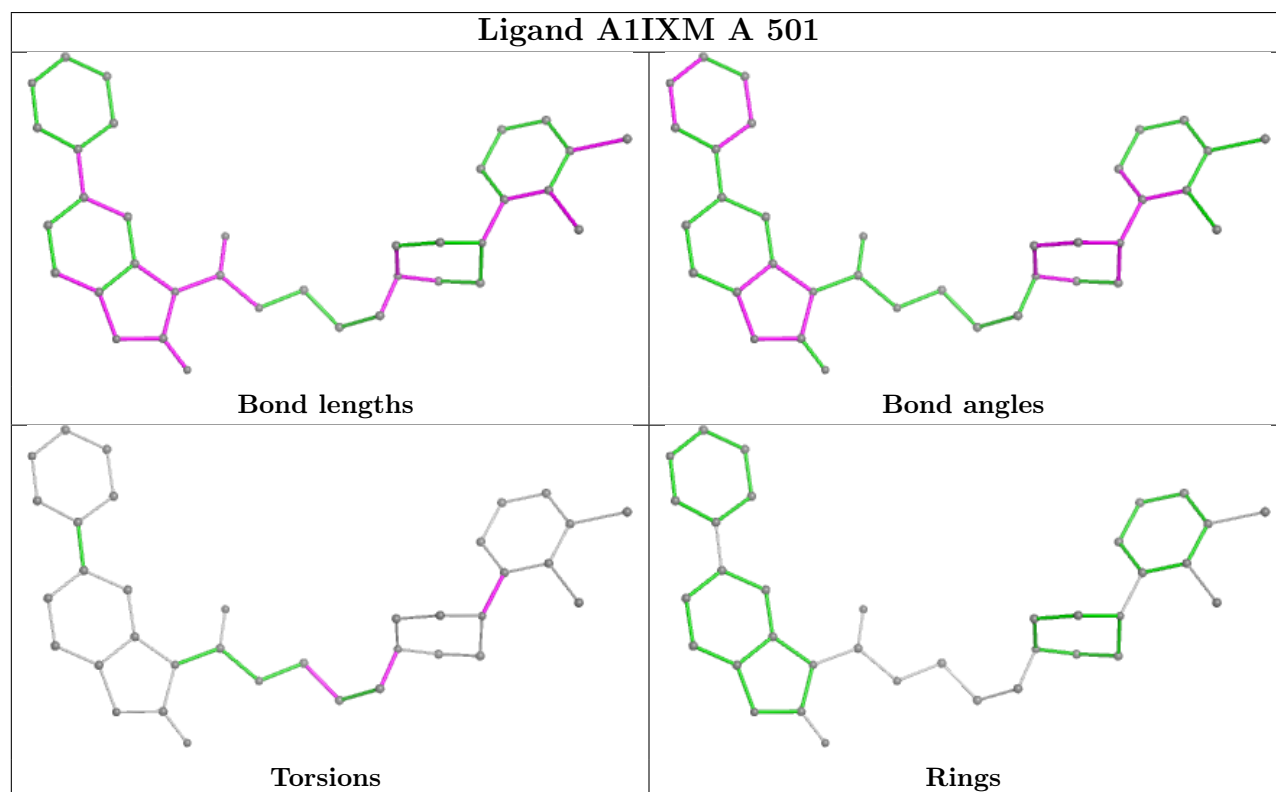
Mol	Chain	Res	Type	Atoms
2	A	501	A1IXM	C35-C06-N07-C08
2	A	501	A1IXM	C35-C06-N07-C34
2	B	501	A1IXM	C35-C06-N07-C34
2	A	501	A1IXM	C11-C12-C13-N14
2	B	501	A1IXM	C05-C06-N07-C34
2	B	501	A1IXM	N10-C11-C12-C13
2	A	501	A1IXM	C12-C11-N10-C09
2	A	501	A1IXM	C12-C11-N10-C33
2	A	501	A1IXM	C05-C06-N07-C08
2	A	501	A1IXM	C05-C06-N07-C34
2	B	501	A1IXM	C12-C11-N10-C09

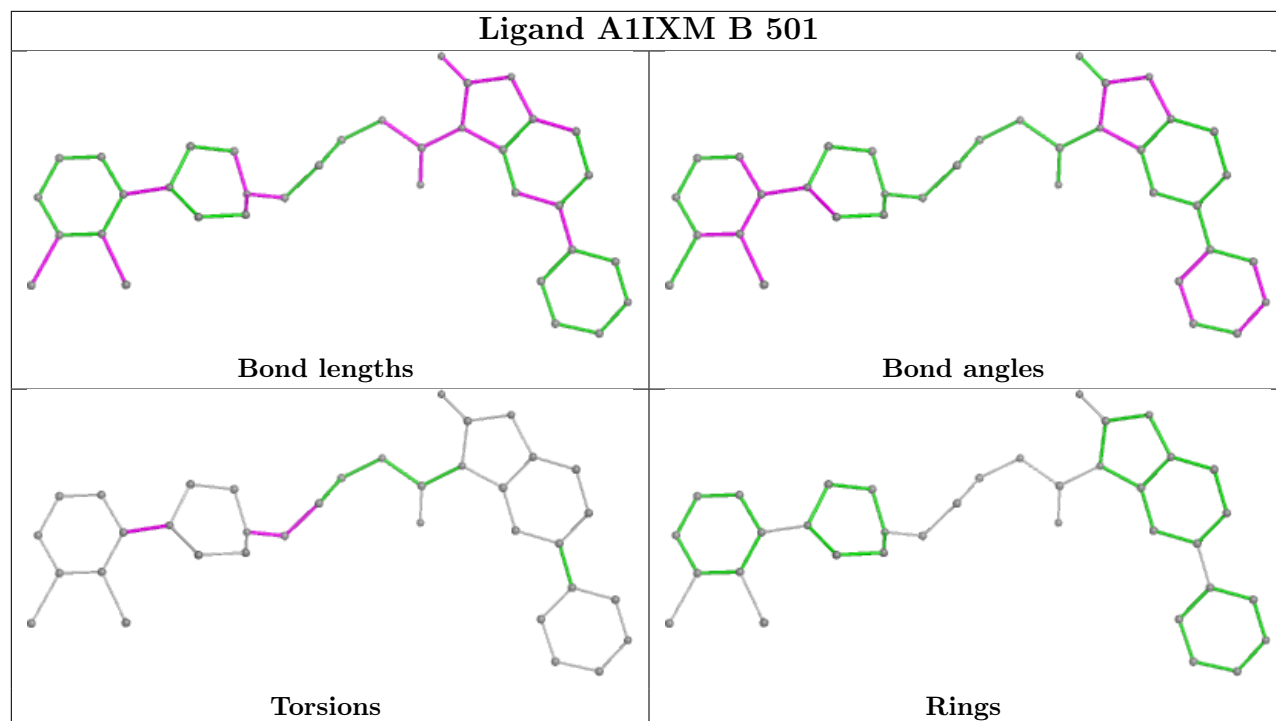
There are no ring outliers.

No monomer is involved in short contacts.

The following is a two-dimensional graphical depiction of Mogul quality analysis of bond lengths,

bond angles, torsion angles, and ring geometry for all instances of the Ligand of Interest. In addition, ligands with molecular weight > 250 and outliers as shown on the validation Tables will also be included. For torsion angles, if less than 5% of the Mogul distribution of torsion angles is within 10 degrees of the torsion angle in question, then that torsion angle is considered an outlier. Any bond that is central to one or more torsion angles identified as an outlier by Mogul will be highlighted in the graph. For rings, the root-mean-square deviation (RMSD) between the ring in question and similar rings identified by Mogul is calculated over all ring torsion angles. If the average RMSD is greater than 60 degrees and the minimal RMSD between the ring in question and any Mogul-identified rings is also greater than 60 degrees, then that ring is considered an outlier. The outliers are highlighted in purple. The color gray indicates Mogul did not find sufficient equivalents in the CSD to analyse the geometry.





5.7 Other polymers [i](#)

There are no such residues in this entry.

5.8 Polymer linkage issues [i](#)

There are no chain breaks in this entry.

6 Fit of model and data

6.1 Protein, DNA and RNA chains

In the following table, the column labelled ‘#RSRZ > 2’ contains the number (and percentage) of RSRZ outliers, followed by percent RSRZ outliers for the chain as percentile scores relative to all X-ray entries and entries of similar resolution. The OWAB column contains the minimum, median, 95th percentile and maximum values of the occupancy-weighted average B-factor per residue. The column labelled ‘Q < 0.9’ lists the number of (and percentage) of residues with an average occupancy less than 0.9.

Mol	Chain	Analysed	<RSRZ>	#RSRZ>2	OWAB(Å ²)	Q<0.9
1	A	361/442 (81%)	0.20	28 (7%) 20 18	21, 38, 90, 127	0
1	B	358/442 (80%)	0.20	36 (10%) 14 12	21, 36, 92, 130	0
All	All	719/884 (81%)	0.20	64 (8%) 17 14	21, 37, 90, 130	0

All (64) RSRZ outliers are listed below:

Mol	Chain	Res	Type	RSRZ
1	A	291	PHE	7.6
1	B	291	PHE	6.1
1	B	289	THR	5.5
1	A	120	GLY	5.1
1	A	289	THR	4.9
1	A	286	PRO	4.9
1	B	93	PHE	4.9
1	A	122	LYS	4.6
1	B	28	VAL	4.5
1	B	290	GLU	4.4
1	A	290	GLU	4.3
1	B	288	TYR	4.2
1	A	288	TYR	4.1
1	B	46	GLN	4.0
1	A	121	GLU	3.9
1	A	292	LYS	3.9
1	B	32	LYS	3.7
1	B	286	PRO	3.7
1	B	287	ASN	3.7
1	A	123	LYS	3.6
1	A	293	PHE	3.5
1	B	35	SER	3.5
1	B	120	GLY	3.4
1	B	383	ARG	3.4

Continued on next page...

Continued from previous page...

Mol	Chain	Res	Type	RSRZ
1	A	294	PRO	3.3
1	B	294	PRO	3.3
1	B	123	LYS	3.3
1	B	122	LYS	3.1
1	B	121	GLU	3.1
1	B	48	PRO	3.1
1	A	300	PRO	3.0
1	A	91	LYS	3.0
1	B	91	LYS	2.9
1	B	292	LYS	2.9
1	B	306	ARG	2.9
1	B	36	LYS	2.7
1	A	31	ASP	2.7
1	B	77	ASP	2.7
1	B	293	PHE	2.7
1	B	26	MET	2.7
1	B	27	LYS	2.6
1	A	93	PHE	2.6
1	A	48	PRO	2.6
1	A	28	VAL	2.6
1	B	31	ASP	2.5
1	B	303	LYS	2.5
1	A	145	HIS	2.5
1	A	303	LYS	2.4
1	B	30	ARG	2.4
1	B	66	SER	2.3
1	A	94	LYS	2.3
1	B	34	GLY	2.3
1	A	125	GLU	2.3
1	A	32	LYS	2.3
1	B	92	ARG	2.2
1	A	25	SER	2.2
1	B	302	THR	2.2
1	B	148	ARG	2.2
1	A	298	ALA	2.2
1	A	295	GLN	2.1
1	B	37	VAL	2.1
1	A	384	ILE	2.0
1	A	285	ASN	2.0
1	B	209	ARG	2.0

6.2 Non-standard residues in protein, DNA, RNA chains [i](#)

There are no non-standard protein/DNA/RNA residues in this entry.

6.3 Carbohydrates [i](#)

There are no oligosaccharides in this entry.

6.4 Ligands [i](#)

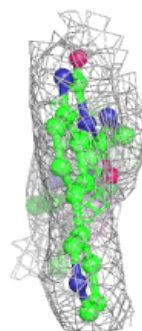
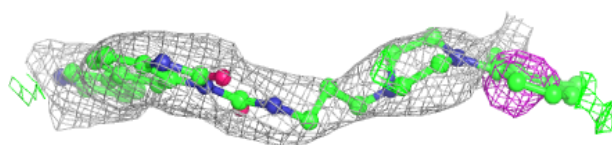
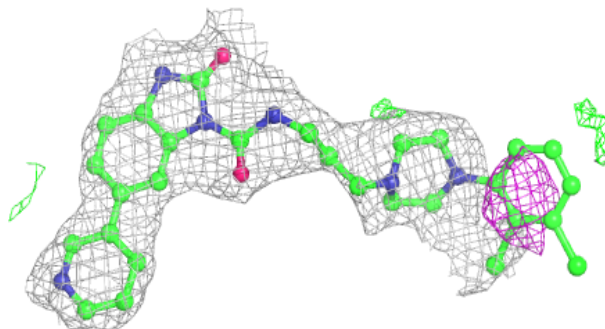
In the following table, the Atoms column lists the number of modelled atoms in the group and the number defined in the chemical component dictionary. The B-factors column lists the minimum, median, 95th percentile and maximum values of B factors of atoms in the group. The column labelled 'Q< 0.9' lists the number of atoms with occupancy less than 0.9.

Mol	Type	Chain	Res	Atoms	RSCC	RSR	B-factors(\AA^2)	Q<0.9
2	A1IXM	B	501	36/36	0.86	0.16	28,35,111,128	0
2	A1IXM	A	501	36/36	0.89	0.15	28,42,126,136	0

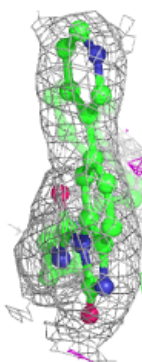
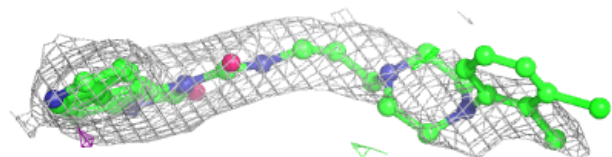
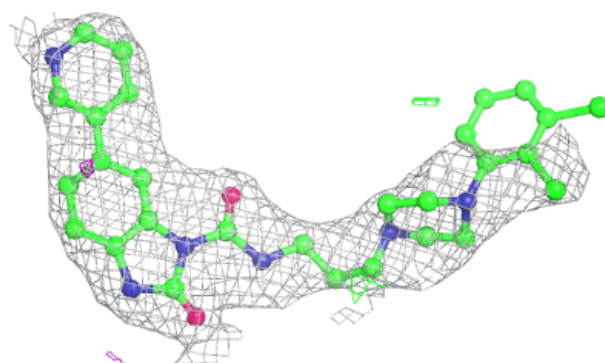
The following is a graphical depiction of the model fit to experimental electron density of all instances of the Ligand of Interest. In addition, ligands with molecular weight > 250 and outliers as shown on the geometry validation Tables will also be included. Each fit is shown from different orientation to approximate a three-dimensional view.

Electron density around A1IXM B 501:

$2mF_o-DF_c$ (at 0.7 rmsd) in gray
 mF_o-DF_c (at 3 rmsd) in purple (negative)
and green (positive)

**Electron density around A1IXM A 501:**

$2mF_o-DF_c$ (at 0.7 rmsd) in gray
 mF_o-DF_c (at 3 rmsd) in purple (negative)
and green (positive)



6.5 Other polymers [i](#)

There are no such residues in this entry.