



Full wwPDB EM Validation Report ⓘ

Jun 25, 2025 – 05:03 am BST

PDB ID : 9GA4 / pdb_00009ga4
EMDB ID : EMD-51173
Title : MtUvrA2UvrB2 bound to damaged oligonucleotide
Authors : Genta, M.; Capelli, R.; Ferrara, G.; Rizzi, M.; Rossi, F.; Jeruzalmi, D.; Bolognesi, M.; Chaves-Sanjuan, A.; Miggiano, R.
Deposited on : 2024-07-26
Resolution : 3.70 Å(reported)

This is a Full wwPDB EM Validation Report for a publicly released PDB entry.

We welcome your comments at validation@mail.wwpdb.org

A user guide is available at

<https://www.wwpdb.org/validation/2017/EMValidationReportHelp>
with specific help available everywhere you see the ⓘ symbol.

The types of validation reports are described at

<http://www.wwpdb.org/validation/2017/FAQs#types>.

The following versions of software and data (see [references ⓘ](#)) were used in the production of this report:

EMDB validation analysis : 0.0.1.dev118
MolProbity : 4-5-2 with Phenix2.0rc1
Percentile statistics : 20231227.v01 (using entries in the PDB archive December 27th 2023)
MapQ : 1.9.13
Ideal geometry (proteins) : Engh & Huber (2001)
Ideal geometry (DNA, RNA) : Parkinson et al. (1996)
Validation Pipeline (wwPDB-VP) : 2.44

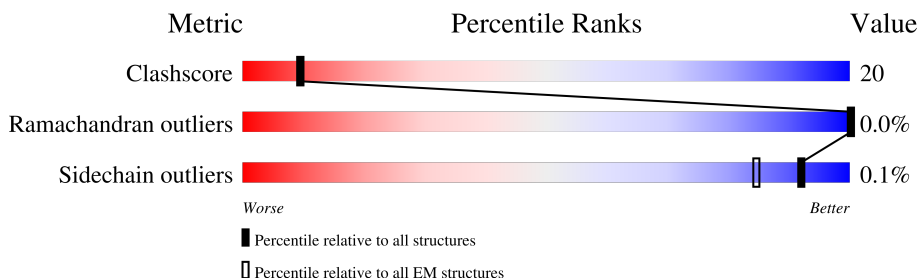
1 Overall quality at a glance

The following experimental techniques were used to determine the structure:

ELECTRON MICROSCOPY

The reported resolution of this entry is 3.70 Å.

Percentile scores (ranging between 0-100) for global validation metrics of the entry are shown in the following graphic. The table shows the number of entries on which the scores are based.



Metric	Whole archive (#Entries)	EM structures (#Entries)
Clashscore	210492	15764
Ramachandran outliers	207382	16835
Sidechain outliers	206894	16415

The table below summarises the geometric issues observed across the polymeric chains and their fit to the map. The red, orange, yellow and green segments of the bar indicate the fraction of residues that contain outliers for ≥ 3 , 2, 1 and 0 types of geometric quality criteria respectively. A grey segment represents the fraction of residues that are not modelled. The numeric value for each fraction is indicated below the corresponding segment, with a dot representing fractions $\leq 5\%$. The upper red bar (where present) indicates the fraction of residues that have poor fit to the EM map (all-atom inclusion $< 40\%$). The numeric value is given above the bar.

Mol	Chain	Length	Quality of chain
1	A	993	<div> <div>19%</div> <div>58%</div> <div>34%</div> <div>8%</div> </div>
1	B	993	<div> <div>15%</div> <div>57%</div> <div>34%</div> <div>8%</div> </div>
2	C	720	<div> <div>33%</div> <div>52%</div> <div>30%</div> <div>18%</div> </div>
2	D	720	<div> <div>24%</div> <div>51%</div> <div>31%</div> <div>18%</div> </div>
3	E	42	<div> <div>19%</div> <div>40%</div> <div>48%</div> <div>12%</div> </div>
3	F	42	<div> <div>10%</div> <div>52%</div> <div>36%</div> <div>12%</div> </div>

2 Entry composition

There are 4 unique types of molecules in this entry. The entry contains 24900 atoms, of which 0 are hydrogens and 0 are deuteriums.

In the tables below, the AltConf column contains the number of residues with at least one atom in alternate conformation and the Trace column contains the number of residues modelled with at most 2 atoms.

- Molecule 1 is a protein called UvrABC system protein A.

Mol	Chain	Residues	Atoms					AltConf	Trace
1	A	912	Total	C	N	O	S	0	0
			7031	4403	1270	1338	20		
1	B	913	Total	C	N	O	S	0	0
			7035	4408	1269	1338	20		

There are 42 discrepancies between the modelled and reference sequences:

Chain	Residue	Modelled	Actual	Comment	Reference
A	-20	MET	-	initiating methionine	UNP P9WQK7
A	-19	GLY	-	expression tag	UNP P9WQK7
A	-18	HIS	-	expression tag	UNP P9WQK7
A	-17	HIS	-	expression tag	UNP P9WQK7
A	-16	HIS	-	expression tag	UNP P9WQK7
A	-15	HIS	-	expression tag	UNP P9WQK7
A	-14	HIS	-	expression tag	UNP P9WQK7
A	-13	HIS	-	expression tag	UNP P9WQK7
A	-12	HIS	-	expression tag	UNP P9WQK7
A	-11	HIS	-	expression tag	UNP P9WQK7
A	-10	HIS	-	expression tag	UNP P9WQK7
A	-9	HIS	-	expression tag	UNP P9WQK7
A	-8	SER	-	expression tag	UNP P9WQK7
A	-7	SER	-	expression tag	UNP P9WQK7
A	-6	GLY	-	expression tag	UNP P9WQK7
A	-5	HIS	-	expression tag	UNP P9WQK7
A	-4	ILE	-	expression tag	UNP P9WQK7
A	-3	GLU	-	expression tag	UNP P9WQK7
A	-2	GLY	-	expression tag	UNP P9WQK7
A	-1	ARG	-	expression tag	UNP P9WQK7
A	0	HIS	-	expression tag	UNP P9WQK7
B	-20	MET	-	initiating methionine	UNP P9WQK7
B	-19	GLY	-	expression tag	UNP P9WQK7
B	-18	HIS	-	expression tag	UNP P9WQK7
B	-17	HIS	-	expression tag	UNP P9WQK7
B	-16	HIS	-	expression tag	UNP P9WQK7

Continued on next page...

Continued from previous page...

Chain	Residue	Modelled	Actual	Comment	Reference
B	-15	HIS	-	expression tag	UNP P9WQK7
B	-14	HIS	-	expression tag	UNP P9WQK7
B	-13	HIS	-	expression tag	UNP P9WQK7
B	-12	HIS	-	expression tag	UNP P9WQK7
B	-11	HIS	-	expression tag	UNP P9WQK7
B	-10	HIS	-	expression tag	UNP P9WQK7
B	-9	HIS	-	expression tag	UNP P9WQK7
B	-8	SER	-	expression tag	UNP P9WQK7
B	-7	SER	-	expression tag	UNP P9WQK7
B	-6	GLY	-	expression tag	UNP P9WQK7
B	-5	HIS	-	expression tag	UNP P9WQK7
B	-4	ILE	-	expression tag	UNP P9WQK7
B	-3	GLU	-	expression tag	UNP P9WQK7
B	-2	GLY	-	expression tag	UNP P9WQK7
B	-1	ARG	-	expression tag	UNP P9WQK7
B	0	HIS	-	expression tag	UNP P9WQK7

- Molecule 2 is a protein called UvrABC system protein B.

Mol	Chain	Residues	Atoms					AltConf	Trace
2	C	589	Total	C	N	O	S	0	0
			4660	2920	821	904	15		
2	D	591	Total	C	N	O	S	0	0
			4675	2930	823	906	16		

There are 44 discrepancies between the modelled and reference sequences:

Chain	Residue	Modelled	Actual	Comment	Reference
C	-22	MET	-	initiating methionine	UNP P9WFC7
C	-21	GLY	-	expression tag	UNP P9WFC7
C	-20	HIS	-	expression tag	UNP P9WFC7
C	-19	HIS	-	expression tag	UNP P9WFC7
C	-18	HIS	-	expression tag	UNP P9WFC7
C	-17	HIS	-	expression tag	UNP P9WFC7
C	-16	HIS	-	expression tag	UNP P9WFC7
C	-15	HIS	-	expression tag	UNP P9WFC7
C	-14	HIS	-	expression tag	UNP P9WFC7
C	-13	HIS	-	expression tag	UNP P9WFC7
C	-12	HIS	-	expression tag	UNP P9WFC7
C	-11	HIS	-	expression tag	UNP P9WFC7
C	-10	SER	-	expression tag	UNP P9WFC7
C	-9	SER	-	expression tag	UNP P9WFC7

Continued on next page...

Continued from previous page...

Chain	Residue	Modelled	Actual	Comment	Reference
C	-8	GLY	-	expression tag	UNP P9WFC7
C	-7	HIS	-	expression tag	UNP P9WFC7
C	-6	ILE	-	expression tag	UNP P9WFC7
C	-5	GLU	-	expression tag	UNP P9WFC7
C	-4	GLY	-	expression tag	UNP P9WFC7
C	-3	ARG	-	expression tag	UNP P9WFC7
C	-2	HIS	-	expression tag	UNP P9WFC7
C	-1	MET	-	expression tag	UNP P9WFC7
D	-20	MET	-	initiating methionine	UNP P9WFC7
D	-19	GLY	-	expression tag	UNP P9WFC7
D	-18	HIS	-	expression tag	UNP P9WFC7
D	-17	HIS	-	expression tag	UNP P9WFC7
D	-16	HIS	-	expression tag	UNP P9WFC7
D	-15	HIS	-	expression tag	UNP P9WFC7
D	-14	HIS	-	expression tag	UNP P9WFC7
D	-13	HIS	-	expression tag	UNP P9WFC7
D	-12	HIS	-	expression tag	UNP P9WFC7
D	-11	HIS	-	expression tag	UNP P9WFC7
D	-10	HIS	-	expression tag	UNP P9WFC7
D	-9	HIS	-	expression tag	UNP P9WFC7
D	-8	SER	-	expression tag	UNP P9WFC7
D	-7	SER	-	expression tag	UNP P9WFC7
D	-6	GLY	-	expression tag	UNP P9WFC7
D	-5	HIS	-	expression tag	UNP P9WFC7
D	-4	ILE	-	expression tag	UNP P9WFC7
D	-3	GLU	-	expression tag	UNP P9WFC7
D	-2	GLY	-	expression tag	UNP P9WFC7
D	-1	ARG	-	expression tag	UNP P9WFC7
D	0	HIS	-	expression tag	UNP P9WFC7
D	1	MET	-	expression tag	UNP P9WFC7

- Molecule 3 is a DNA chain called DNA.

Mol	Chain	Residues	Atoms					AltConf	Trace
3	E	37	Total	C	N	O	P	0	0
			747	357	131	222	37		
3	F	37	Total	C	N	O	P	0	0
			748	357	134	220	37		

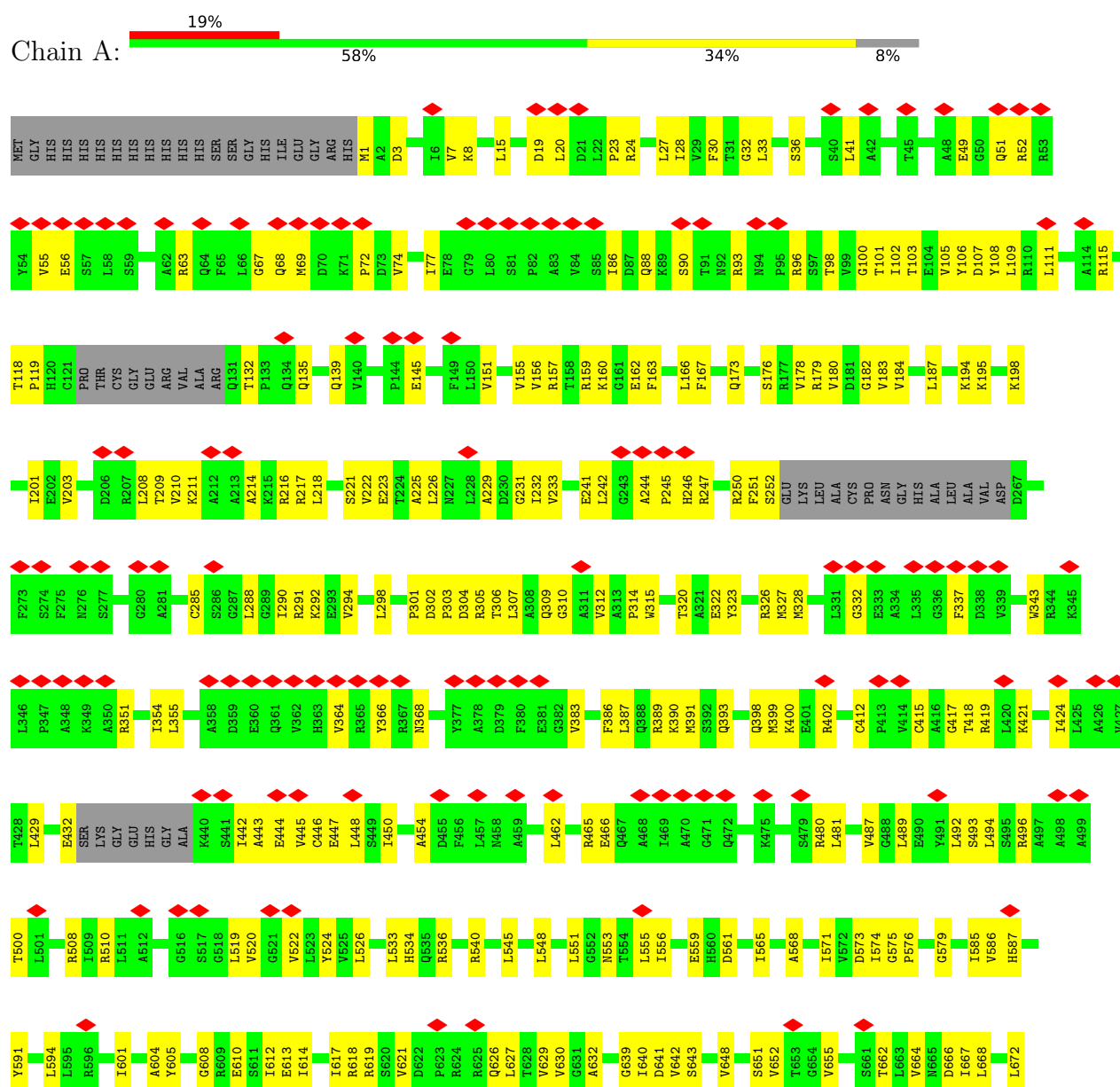
- Molecule 4 is ZINC ION (CCD ID: ZN) (formula: Zn) (labeled as "Ligand of Interest" by depositor).

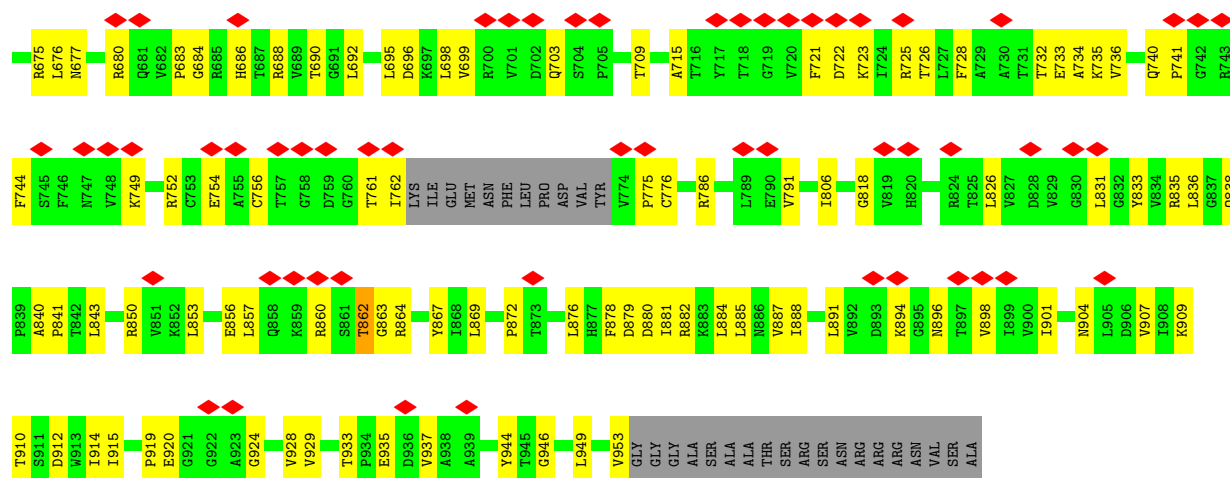
Mol	Chain	Residues	Atoms		AltConf
4	A	2	Total 2	Zn 2	0
4	B	2	Total 2	Zn 2	0

3 Residue-property plots

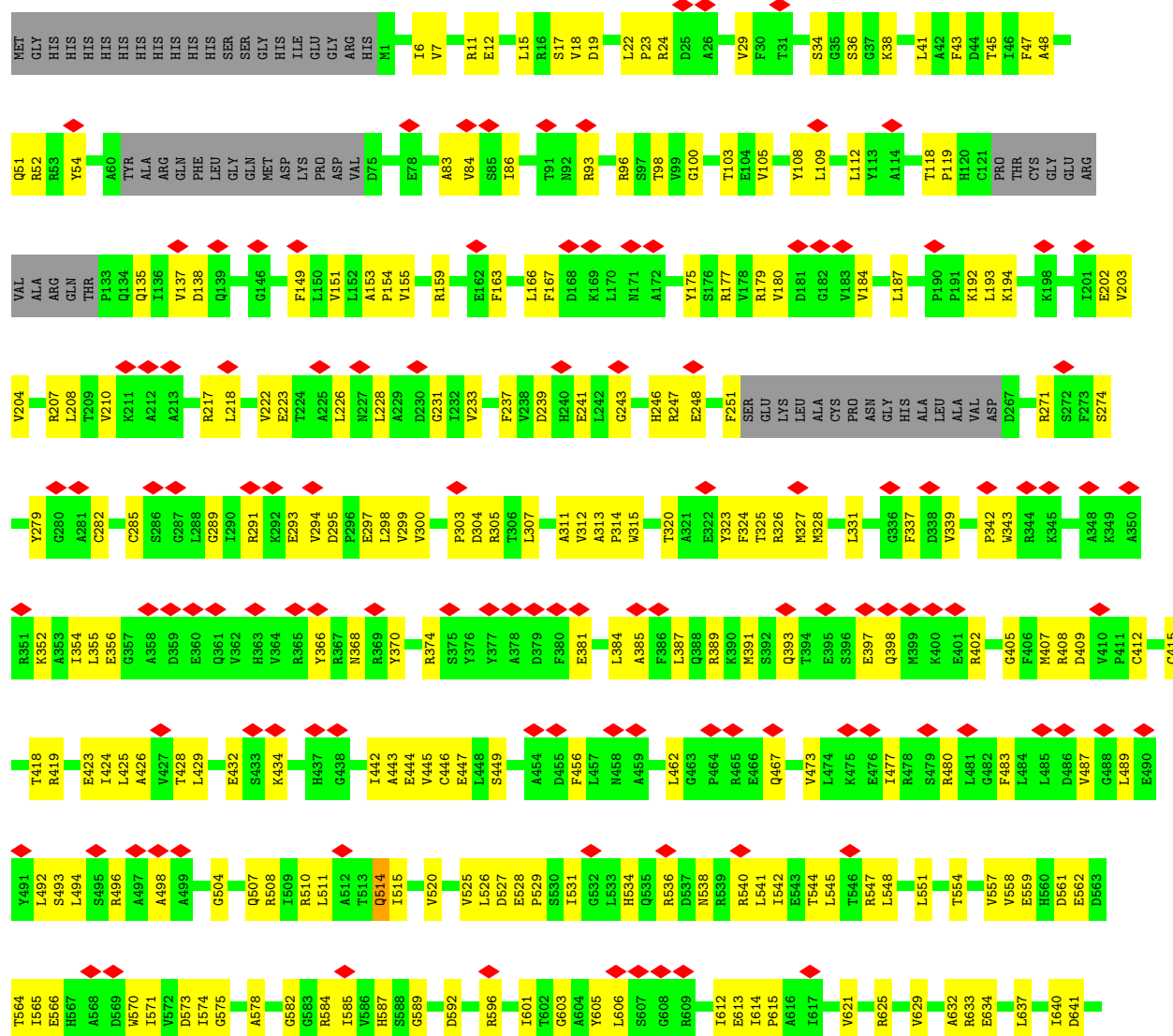
These plots are drawn for all protein, RNA, DNA and oligosaccharide chains in the entry. The first graphic for a chain summarises the proportions of the various outlier classes displayed in the second graphic. The second graphic shows the sequence view annotated by issues in geometry and atom inclusion in map density. Residues are color-coded according to the number of geometric quality criteria for which they contain at least one outlier: green = 0, yellow = 1, orange = 2 and red = 3 or more. A red diamond above a residue indicates a poor fit to the EM map for this residue (all-atom inclusion < 40%). Stretches of 2 or more consecutive residues without any outlier are shown as a green connector. Residues present in the sample, but not in the model, are shown in grey.

- Molecule 1: UvrABC system protein A



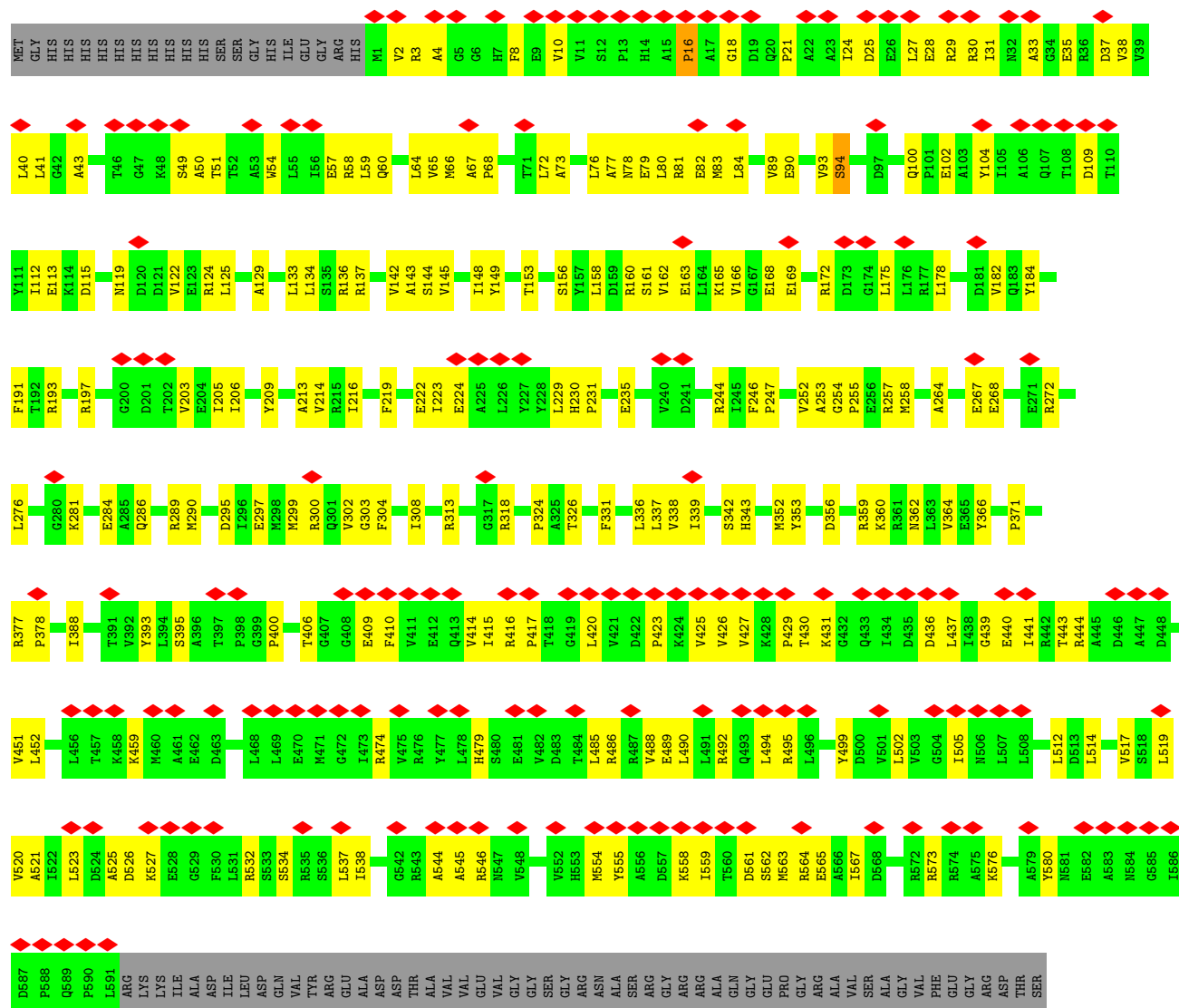


• Molecule 1: UvrABC system protein A

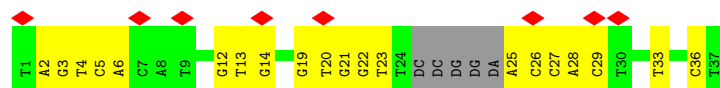




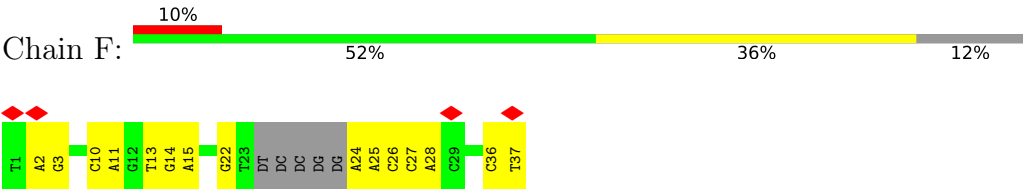
- Molecule 2: UvrABC system protein B



- Molecule 3: DNA



● Molecule 3: DNA



4 Experimental information

Property	Value	Source
EM reconstruction method	SINGLE PARTICLE	Depositor
Imposed symmetry	POINT, C1	Depositor
Number of particles used	110916	Depositor
Resolution determination method	FSC 0.143 CUT-OFF	Depositor
CTF correction method	PHASE FLIPPING ONLY	Depositor
Microscope	FEI TALOS ARCTICA	Depositor
Voltage (kV)	300	Depositor
Electron dose ($e^-/\text{\AA}^2$)	40	Depositor
Minimum defocus (nm)	800	Depositor
Maximum defocus (nm)	2500	Depositor
Magnification	105000	Depositor
Image detector	GATAN K3 (6k x 4k)	Depositor
Maximum map value	0.930	Depositor
Minimum map value	-0.395	Depositor
Average map value	0.003	Depositor
Map value standard deviation	0.036	Depositor
Recommended contour level	0.22	Depositor
Map size (\AA)	336.0, 336.0, 336.0	wwPDB
Map dimensions	400, 400, 400	wwPDB
Map angles ($^\circ$)	90.0, 90.0, 90.0	wwPDB
Pixel spacing (\AA)	0.84, 0.84, 0.84	Depositor

5 Model quality

5.1 Standard geometry

Bond lengths and bond angles in the following residue types are not validated in this section: ZN

The Z score for a bond length (or angle) is the number of standard deviations the observed value is removed from the expected value. A bond length (or angle) with $|Z| > 5$ is considered an outlier worth inspection. RMSZ is the root-mean-square of all Z scores of the bond lengths (or angles).

Mol	Chain	Bond lengths		Bond angles	
		RMSZ	# $ Z > 5$	RMSZ	# $ Z > 5$
1	A	0.22	3/7151 (0.0%)	0.53	6/9687 (0.1%)
1	B	0.14	0/7157	0.41	2/9695 (0.0%)
2	C	0.13	0/4742	0.38	0/6432
2	D	0.82	1/4757 (0.0%)	0.57	2/6452 (0.0%)
3	E	0.19	0/835	0.40	0/1283
3	F	0.17	0/837	0.36	0/1286
All	All	0.39	4/25479 (0.0%)	0.47	10/34835 (0.0%)

All (4) bond length outliers are listed below:

Mol	Chain	Res	Type	Atoms	Z	Observed(Å)	Ideal(Å)
2	D	16	PRO	N-CD	55.60	2.25	1.47
1	A	119	PRO	CB-CG	-9.86	1.00	1.49
1	A	119	PRO	CG-CD	-8.16	1.23	1.50
1	A	118	THR	C-N	-5.60	1.28	1.33

All (10) bond angle outliers are listed below:

Mol	Chain	Res	Type	Atoms	Z	Observed(°)	Ideal(°)
2	D	16	PRO	CA-N-CD	-26.18	75.35	112.00
1	A	119	PRO	CB-CG-CD	23.08	179.96	106.10
2	D	16	PRO	N-CD-CG	-19.78	73.53	103.20
1	A	119	PRO	N-CD-CG	-18.61	75.29	103.20
1	A	119	PRO	CA-CB-CG	-15.56	74.93	104.50
1	A	862	THR	CA-C-N	7.67	135.51	121.70
1	A	862	THR	C-N-CA	7.67	135.51	121.70
1	B	862	THR	CA-C-N	7.47	135.15	121.70
1	B	862	THR	C-N-CA	7.47	135.15	121.70
1	A	119	PRO	CA-N-CD	-5.77	103.93	112.00

There are no chirality outliers.

There are no planarity outliers.

5.2 Too-close contacts

In the following table, the Non-H and H(model) columns list the number of non-hydrogen atoms and hydrogen atoms in the chain respectively. The H(added) column lists the number of hydrogen atoms added and optimized by MolProbity. The Clashes column lists the number of clashes within the asymmetric unit, whereas Symm-Clashes lists symmetry-related clashes.

Mol	Chain	Non-H	H(model)	H(added)	Clashes	Symm-Clashes
1	A	7031	0	7053	262	0
1	B	7035	0	7059	297	0
2	C	4660	0	4628	179	0
2	D	4675	0	4646	206	0
3	E	747	0	415	27	0
3	F	748	0	414	19	0
4	A	2	0	0	0	0
4	B	2	0	0	0	0
All	All	24900	0	24215	964	0

The all-atom clashscore is defined as the number of clashes found per 1000 atoms (including hydrogen atoms). The all-atom clashscore for this structure is 20.

All (964) close contacts within the same asymmetric unit are listed below, sorted by their clash magnitude.

Atom-1	Atom-2	Interatomic distance (Å)	Clash overlap (Å)
3:E:22:DG:H21	3:F:25:DA:N6	1.46	1.14
2:C:214:ILE:HG22	2:C:224:LEU:HD22	1.29	1.13
1:B:689:VAL:HG22	1:B:692:LEU:HD11	1.34	1.09
2:D:427:VAL:HG22	2:D:554:MET:HE2	1.33	1.06
1:A:1:MET:HE1	1:B:6:ILE:HD11	1.38	1.05
1:B:326:ARG:HG3	1:B:327:MET:CE	1.86	1.05
2:D:485:LEU:HG	2:D:486:ARG:NH1	1.70	1.04
1:B:326:ARG:HG3	1:B:327:MET:HE2	1.37	1.04
2:C:214:ILE:HG22	2:C:224:LEU:CD2	1.89	1.03
2:D:427:VAL:CG2	2:D:554:MET:HE2	1.87	1.03
3:E:22:DG:N2	3:F:25:DA:H62	1.56	1.00
2:D:427:VAL:HG22	2:D:554:MET:CE	1.90	0.99
2:D:427:VAL:CG2	2:D:554:MET:CE	2.40	0.99
2:D:16:PRO:HD2	2:D:54:TRP:CZ3	1.99	0.97
1:A:106:TYR:HD1	1:A:109:LEU:HD11	1.32	0.94

Continued on next page...

Continued from previous page...

Atom-1	Atom-2	Interatomic distance (Å)	Clash overlap (Å)
2:D:485:LEU:HG	2:D:486:ARG:HH11	1.25	0.94
1:A:728:PHE:CE2	1:A:791:VAL:CG1	2.52	0.91
1:A:387:LEU:O	1:A:391:MET:HE2	1.70	0.91
2:D:352:MET:HE3	2:D:352:MET:O	1.72	0.90
1:A:728:PHE:CE2	1:A:791:VAL:HG12	2.05	0.90
1:A:672:LEU:O	1:A:676:LEU:HB3	1.71	0.90
3:E:22:DG:H21	3:F:25:DA:H62	0.89	0.89
3:E:25:DA:H62	3:F:22:DG:H21	1.21	0.89
1:B:756:CYS:SG	1:B:776:CYS:HB2	2.12	0.89
1:B:326:ARG:CG	1:B:327:MET:HE2	2.03	0.88
2:D:102:GLU:HA	2:D:112:ILE:O	1.73	0.88
1:B:531:ILE:HD11	1:B:703:GLN:HB2	1.57	0.86
2:D:16:PRO:CD	2:D:16:PRO:N	2.25	0.86
2:D:16:PRO:HD2	2:D:54:TRP:CH2	2.11	0.84
3:E:25:DA:H62	3:F:22:DG:N2	1.76	0.84
1:A:312:VAL:HG12	1:A:314:PRO:HD2	1.61	0.83
2:D:16:PRO:CD	2:D:54:TRP:CZ3	2.62	0.83
1:A:857:LEU:HD23	1:A:891:LEU:HD12	1.61	0.82
1:A:106:TYR:O	1:A:109:LEU:HD12	1.79	0.82
1:A:629:VAL:O	1:A:641:ASP:HA	1.81	0.81
2:C:287:ARG:HB3	2:C:288:MET:HE2	1.63	0.80
2:D:427:VAL:HG23	2:D:554:MET:CE	2.11	0.80
2:C:54:ILE:HG12	2:C:61:THR:HG21	1.65	0.79
2:C:458:MET:HE3	2:C:458:MET:H	1.48	0.79
3:E:25:DA:N6	3:F:22:DG:H21	1.81	0.79
1:B:689:VAL:HG22	1:B:692:LEU:CD1	2.12	0.78
1:B:86:ILE:HD13	1:B:526:LEU:HB3	1.65	0.77
1:A:106:TYR:CD1	1:A:109:LEU:HD11	2.18	0.77
1:B:108:TYR:CD1	1:B:109:LEU:HD22	2.20	0.77
1:B:108:TYR:OH	1:B:473:VAL:CG1	2.33	0.77
2:D:299:MET:HA	2:D:303:GLY:HA2	1.68	0.76
1:B:11:ARG:HB3	1:B:17:SER:H	1.49	0.76
2:D:219:PHE:HB2	2:D:224:GLU:HB2	1.67	0.76
2:D:289:ARG:HB3	2:D:290:MET:HE2	1.66	0.76
2:D:425:VAL:HG11	2:D:567:ILE:HG23	1.67	0.76
1:B:326:ARG:HE	1:B:327:MET:CE	2.00	0.75
2:C:451:VAL:HB	2:C:501:VAL:HG12	1.68	0.75
1:B:757:THR:HG22	1:B:757:THR:O	1.84	0.74
2:C:420:ASP:HB2	2:C:572:ARG:HB2	1.67	0.74
1:B:725:ARG:HG3	1:B:741:PRO:HB2	1.68	0.74
2:D:255:PRO:HA	2:D:258:MET:HG2	1.68	0.74

Continued on next page...

Continued from previous page...

Atom-1	Atom-2	Interatomic distance (Å)	Clash overlap (Å)
1:B:672:LEU:HB2	1:B:698:LEU:HD22	1.68	0.74
1:B:429:LEU:HB2	1:B:442:ILE:HG12	1.69	0.73
2:D:485:LEU:CG	2:D:486:ARG:HH11	2.01	0.73
2:D:80:LEU:HB2	2:D:89:VAL:HG11	1.70	0.72
2:D:104:TYR:HD2	2:D:362:ASN:HB3	1.54	0.72
1:A:208:LEU:HD21	1:A:217:ARG:HD2	1.72	0.72
1:B:434:LYS:HG2	1:B:456:PHE:HB3	1.72	0.72
1:A:652:VAL:HG11	1:A:664:VAL:HG21	1.72	0.71
2:D:16:PRO:HD2	2:D:54:TRP:CE3	2.25	0.71
1:A:232:ILE:HG13	1:A:252:SER:HA	1.72	0.71
1:B:511:LEU:HD11	1:B:545:LEU:HD21	1.73	0.71
1:B:601:ILE:HG12	1:B:879:ASP:HB2	1.72	0.71
2:C:466:LEU:HG	2:C:473:VAL:HG11	1.71	0.71
2:C:256:MET:N	2:C:256:MET:HE2	2.06	0.70
1:B:511:LEU:HA	1:B:514:GLN:HE21	1.56	0.70
1:A:462:LEU:HD11	1:A:466:GLU:H	1.56	0.70
1:A:672:LEU:HB2	1:A:698:LEU:HD13	1.73	0.70
1:B:689:VAL:CG2	1:B:692:LEU:HD11	2.20	0.70
1:A:132:THR:HG23	1:A:135:GLN:H	1.57	0.69
1:B:282:CYS:SG	1:B:415:CYS:HB3	2.32	0.69
1:B:312:VAL:HG12	1:B:314:PRO:HD2	1.72	0.69
2:C:100:GLU:HA	2:C:110:ILE:O	1.92	0.69
2:D:444:ARG:HG3	2:D:519:LEU:HD11	1.74	0.69
2:D:427:VAL:CG2	2:D:554:MET:HE3	2.21	0.69
1:B:153:ALA:HA	1:B:204:VAL:HG13	1.74	0.69
1:A:387:LEU:C	1:A:391:MET:HE2	2.17	0.69
1:A:326:ARG:HG3	1:A:327:MET:HE3	1.74	0.69
2:C:200:THR:HG23	2:C:215:GLU:HG2	1.75	0.69
3:E:36:DC:H42	3:F:13:DT:H3	1.39	0.69
2:D:485:LEU:CG	2:D:486:ARG:NH1	2.54	0.69
2:D:27:LEU:HD12	2:D:30:ARG:HH21	1.58	0.68
1:B:696:ASP:OD1	1:B:864:ARG:NH1	2.26	0.68
1:B:177:ARG:HB3	1:B:204:VAL:HB	1.74	0.68
1:B:326:ARG:CG	1:B:327:MET:CE	2.66	0.68
2:D:43:ALA:HB2	2:D:414:VAL:HG13	1.75	0.68
1:A:733:GLU:HG3	1:A:791:VAL:HA	1.75	0.68
2:C:152:PRO:HB3	2:C:328:TYR:HA	1.76	0.68
1:A:840:ALA:HA	1:A:843:LEU:HG	1.75	0.68
1:A:756:CYS:SG	1:A:776:CYS:HB2	2.33	0.68
1:B:98:THR:HG23	1:B:100:GLY:H	1.56	0.68
2:C:469:MET:HE1	2:C:471:ILE:HG13	1.76	0.67

Continued on next page...

Continued from previous page...

Atom-1	Atom-2	Interatomic distance (Å)	Clash overlap (Å)
2:D:429:PRO:HB3	2:D:431:LYS:NZ	2.09	0.67
2:D:430:THR:H	2:D:431:LYS:NZ	1.91	0.67
1:B:640:ILE:HG21	1:B:927:THR:HA	1.76	0.67
2:C:99:PRO:O	2:C:110:ILE:HD12	1.94	0.67
2:C:57:LEU:HD12	2:C:334:LEU:HD22	1.76	0.67
1:A:179:ARG:HD2	1:A:184:VAL:HG22	1.76	0.67
1:B:432:GLU:HG2	1:B:462:LEU:HD11	1.76	0.67
2:D:486:ARG:H	2:D:486:ARG:HD2	1.59	0.67
1:B:108:TYR:OH	1:B:473:VAL:HG13	1.93	0.67
1:B:869:LEU:HB2	1:B:900:VAL:HG23	1.77	0.66
1:A:307:LEU:HD11	1:A:315:TRP:HZ3	1.61	0.66
1:A:32:GLY:HA2	1:A:601:ILE:HD11	1.77	0.66
1:B:326:ARG:NE	1:B:327:MET:CE	2.58	0.66
2:C:132:LEU:HD22	2:C:156:LEU:HD22	1.78	0.66
1:B:407:MET:HE3	1:B:408:ARG:NH1	2.10	0.66
1:A:326:ARG:HG3	1:A:327:MET:CE	2.25	0.65
1:A:327:MET:HE3	1:A:327:MET:H	1.61	0.65
1:A:568:ALA:HB3	1:A:571:ILE:HG12	1.78	0.65
2:D:554:MET:N	2:D:554:MET:SD	2.69	0.65
3:E:22:DG:H2'	3:E:23:DT:H71	1.78	0.65
2:D:134:LEU:HB3	2:D:158:LEU:HD22	1.79	0.65
1:A:752:ARG:HH21	1:A:754:GLU:HA	1.62	0.65
1:B:387:LEU:HB3	1:B:391:MET:HE1	1.79	0.65
2:C:482:THR:HA	2:C:485:ARG:CZ	2.27	0.65
1:A:307:LEU:HD13	1:A:343:TRP:HZ2	1.62	0.65
1:B:304:ASP:HA	1:B:342:PRO:HB3	1.77	0.65
1:A:387:LEU:HD12	1:A:391:MET:HE1	1.80	0.65
1:A:756:CYS:HA	1:A:762:ILE:HD11	1.79	0.65
1:B:443:ALA:HB1	1:B:447:GLU:HB2	1.78	0.64
2:D:512:LEU:HB3	2:D:514:LEU:HD11	1.79	0.64
1:A:677:ASN:HD21	1:A:698:LEU:H	1.45	0.64
1:A:49:GLU:HG2	1:A:77:ILE:HB	1.78	0.64
1:B:573:ASP:H	1:B:587:HIS:HB3	1.62	0.64
1:B:12:GLU:H	1:B:15:LEU:HB3	1.63	0.64
1:A:145:GLU:OE1	1:A:210:VAL:HG12	1.97	0.64
1:A:443:ALA:HB1	1:A:447:GLU:HB2	1.79	0.64
2:C:235:ILE:HG22	2:C:236:ARG:HD2	1.79	0.64
2:D:563:MET:O	2:D:567:ILE:HG12	1.98	0.64
1:B:850:ARG:HH21	1:B:884:LEU:HD22	1.62	0.63
1:A:306:THR:HG23	1:A:688:ARG:HH22	1.63	0.63
1:A:545:LEU:HG	1:A:555:LEU:HD13	1.79	0.63

Continued on next page...

Continued from previous page...

Atom-1	Atom-2	Interatomic distance (Å)	Clash overlap (Å)
1:A:735:LYS:HD3	2:C:183:THR:HG22	1.81	0.63
2:D:124:ARG:HB2	2:D:193:ARG:HH22	1.63	0.63
1:A:105:VAL:HG12	1:A:480:ARG:HE	1.64	0.63
1:A:884:LEU:O	1:A:888:ILE:HG12	1.98	0.63
1:B:175:TYR:HB2	1:B:187:LEU:HD22	1.80	0.63
1:B:860:ARG:HG3	1:B:862:THR:HG23	1.79	0.63
1:A:576:PRO:HD3	1:A:586:VAL:HB	1.81	0.63
2:C:421:PRO:HD3	2:C:543:ALA:HB2	1.81	0.63
1:B:155:VAL:HG22	1:B:202:GLU:HB3	1.81	0.63
2:D:525:ALA:HA	2:D:532:ARG:HD3	1.79	0.63
1:B:508:ARG:HD3	1:B:541:LEU:HD22	1.80	0.62
2:C:457:LYS:HG3	2:C:458:MET:HE3	1.81	0.62
1:A:559:GLU:HG3	1:A:561:ASP:H	1.63	0.62
1:B:720:VAL:HA	1:B:723:LYS:HZ1	1.64	0.62
1:A:105:VAL:O	1:A:109:LEU:HG	1.99	0.62
1:B:652:VAL:HG11	1:B:664:VAL:HG21	1.80	0.62
2:C:79:ARG:HG2	2:C:87:VAL:HB	1.82	0.62
1:A:55:VAL:HG22	1:A:68:GLN:HG3	1.79	0.62
1:A:242:LEU:H	1:A:242:LEU:HD23	1.64	0.62
1:A:52:ARG:HH12	1:A:74:VAL:H	1.46	0.62
1:B:515:ILE:HD11	1:B:545:LEU:HD13	1.81	0.62
2:C:158:ARG:HH22	2:C:252:GLY:HA2	1.64	0.62
2:C:413:ILE:HA	2:C:575:GLN:HG2	1.81	0.62
2:C:442:ARG:HH21	2:C:516:SER:HB3	1.64	0.62
1:B:528:GLU:OE2	1:B:874:THR:HG23	1.99	0.62
2:C:210:LEU:HA	2:C:229:PRO:HD3	1.81	0.62
1:B:108:TYR:HD1	1:B:109:LEU:HD22	1.65	0.62
2:D:94:SER:HB3	2:D:122:VAL:HG13	1.82	0.62
2:D:426:VAL:O	2:D:554:MET:CE	2.47	0.62
1:A:640:ILE:HG12	1:A:928:VAL:H	1.65	0.62
2:D:286:GLN:O	2:D:290:MET:HG2	2.00	0.61
2:D:474:ARG:HD2	2:D:499:TYR:HA	1.82	0.61
1:A:102:ILE:HD12	1:A:510:ARG:HH12	1.64	0.61
2:D:16:PRO:CD	2:D:54:TRP:CH2	2.82	0.61
2:D:289:ARG:HB3	2:D:290:MET:CE	2.30	0.61
2:C:38:LEU:HD11	2:C:411:GLN:HG2	1.82	0.61
2:C:350:MET:HE3	2:C:350:MET:HA	1.80	0.61
2:C:450:LEU:HB3	2:C:518:VAL:HG23	1.82	0.61
2:D:429:PRO:CB	2:D:431:LYS:HZ3	2.14	0.61
2:C:287:ARG:HB3	2:C:288:MET:CE	2.29	0.61
2:C:9:VAL:HG22	2:C:83:PRO:HD3	1.82	0.61

Continued on next page...

Continued from previous page...

Atom-1	Atom-2	Interatomic distance (Å)	Clash overlap (Å)
1:A:534:HIS:HB2	1:A:655:VAL:HA	1.82	0.61
1:B:652:VAL:HG22	1:B:660:LYS:HD2	1.82	0.61
2:D:81:ARG:HH21	2:D:90:GLU:HA	1.65	0.61
2:D:100:GLN:HB3	2:D:115:ASP:HB3	1.82	0.61
2:C:311:ARG:HG3	2:C:316:ARG:HG3	1.82	0.61
1:B:108:TYR:CD1	1:B:112:LEU:HD13	2.35	0.61
3:E:20:DT:H2''	3:E:21:DG:H5'	1.83	0.61
1:A:160:LYS:HB3	1:A:198:LYS:HD2	1.82	0.61
1:B:293:GLU:HB2	1:B:409:ASP:HA	1.82	0.61
1:A:1:MET:HE1	1:B:6:ILE:CD1	2.24	0.60
1:A:304:ASP:HB3	1:A:688:ARG:HB2	1.82	0.60
1:B:730:ALA:HA	1:B:735:LYS:HE2	1.82	0.60
2:C:11:PRO:HB2	2:C:589:LEU:HB3	1.82	0.60
2:C:463:THR:HG22	2:C:501:VAL:HG21	1.83	0.60
1:B:885:LEU:HD21	1:B:907:VAL:HG13	1.83	0.60
2:C:294:ILE:HA	2:C:297:MET:SD	2.41	0.60
1:A:320:THR:HA	1:A:323:TYR:HB2	1.82	0.60
1:A:728:PHE:HE2	1:A:791:VAL:CG1	2.09	0.60
1:B:326:ARG:NE	1:B:327:MET:HE1	2.16	0.60
2:C:455:THR:HG22	2:C:458:MET:HE1	1.82	0.60
2:D:253:ALA:HA	2:D:257:ARG:HD3	1.83	0.60
2:C:459:ALA:O	2:C:463:THR:HG23	2.02	0.60
1:A:728:PHE:HE2	1:A:791:VAL:HB	1.67	0.60
2:C:284:GLN:O	2:C:288:MET:HG2	2.00	0.60
1:A:7:VAL:O	1:A:19:ASP:HA	2.02	0.60
1:A:309:GLN:HE22	1:A:692:LEU:HB2	1.67	0.60
1:A:728:PHE:CE2	1:A:791:VAL:HG11	2.36	0.60
1:B:326:ARG:HH11	1:B:366:TYR:HB2	1.67	0.60
1:B:108:TYR:OH	1:B:473:VAL:HG12	2.01	0.59
2:D:77:ALA:HB2	2:D:142:VAL:HG11	1.84	0.59
2:D:161:SER:HB3	2:D:244:ARG:HH12	1.66	0.59
2:C:201:VAL:HB	2:C:214:ILE:HG13	1.84	0.59
1:A:209:THR:HG23	1:A:211:LYS:HD3	1.83	0.59
1:A:919:PRO:HG3	1:A:929:VAL:HG11	1.83	0.59
2:D:247:PRO:HG2	2:D:252:VAL:HG13	1.84	0.59
1:B:177:ARG:HD2	1:B:207:ARG:HG2	1.83	0.59
2:D:485:LEU:C	2:D:486:ARG:HH11	2.10	0.59
1:B:698:LEU:HD11	1:B:868:ILE:HG12	1.85	0.59
1:B:640:ILE:HD12	1:B:928:VAL:HG23	1.85	0.59
1:A:761:THR:HG22	1:A:775:PRO:HB3	1.85	0.59
1:A:826:LEU:O	1:A:826:LEU:HD12	2.03	0.59

Continued on next page...

Continued from previous page...

Atom-1	Atom-2	Interatomic distance (Å)	Clash overlap (Å)
2:D:213:ALA:HB3	2:D:229:LEU:O	2.02	0.59
2:D:486:ARG:HD2	2:D:486:ARG:N	2.17	0.59
1:A:454:ALA:HA	1:A:481:LEU:HD13	1.84	0.59
2:C:101:ALA:HB3	2:C:110:ILE:HD11	1.83	0.59
2:D:339:ILE:HB	2:D:393:TYR:HA	1.83	0.59
1:A:885:LEU:HD11	1:A:907:VAL:HA	1.85	0.59
1:B:108:TYR:CE1	1:B:112:LEU:HD11	2.38	0.59
1:B:226:LEU:HD22	1:B:231:GLY:HA2	1.83	0.59
2:D:427:VAL:HG22	2:D:554:MET:HE3	1.80	0.59
3:E:22:DG:N2	3:F:25:DA:N6	2.27	0.58
2:D:430:THR:N	2:D:431:LYS:HZ3	2.00	0.58
1:A:51:GLN:O	1:A:55:VAL:HG12	2.03	0.58
1:B:7:VAL:O	1:B:19:ASP:HA	2.03	0.58
2:C:102:TYR:HB3	2:C:360:ASN:HB3	1.85	0.58
2:C:213:ARG:HH12	2:C:227:LEU:HB2	1.69	0.58
1:A:15:LEU:HD11	1:A:41:LEU:HD13	1.86	0.58
1:A:909:LYS:HB2	1:A:949:LEU:HD22	1.85	0.58
1:B:108:TYR:CZ	1:B:477:ILE:HG12	2.38	0.58
1:B:919:PRO:HD2	1:B:925:GLY:HA2	1.84	0.58
2:C:466:LEU:HA	2:C:469:MET:SD	2.42	0.58
2:D:494:LEU:HD21	2:D:502:LEU:HD11	1.86	0.58
1:A:1:MET:CE	1:B:6:ILE:HD11	2.25	0.58
1:A:52:ARG:HD3	1:A:72:PRO:HG2	1.86	0.58
1:B:108:TYR:CE1	1:B:112:LEU:CD1	2.87	0.58
2:D:426:VAL:C	2:D:554:MET:HE1	2.28	0.58
2:C:255:ARG:HB3	2:C:256:MET:HE2	1.85	0.58
2:D:313:ARG:HG3	2:D:318:ARG:HG3	1.84	0.58
1:A:173:GLN:HA	2:D:197:ARG:NH1	2.18	0.58
1:A:642:VAL:HG13	1:A:915:ILE:HG21	1.86	0.58
2:C:358:LYS:HD3	2:C:372:CYS:HA	1.85	0.58
1:A:108:TYR:HD2	1:A:480:ARG:HH22	1.52	0.57
1:A:156:VAL:HG12	1:A:159:ARG:HB2	1.85	0.57
1:B:721:PHE:HA	1:B:724:ILE:HB	1.86	0.57
1:A:632:ALA:HA	1:A:686:HIS:HA	1.85	0.57
1:A:879:ASP:O	1:A:882:ARG:HG3	2.04	0.57
1:B:326:ARG:HH22	1:B:374:ARG:HB3	1.68	0.57
1:A:162:GLU:H	1:A:195:LYS:HA	1.69	0.57
2:D:25:ASP:O	2:D:29:ARG:HG2	2.03	0.57
2:D:156:SER:HA	2:D:160:ARG:HG3	1.87	0.57
1:B:293:GLU:HG2	1:B:405:GLY:HA2	1.87	0.57
2:D:76:LEU:O	2:D:80:LEU:HG	2.04	0.57

Continued on next page...

Continued from previous page...

Atom-1	Atom-2	Interatomic distance (Å)	Clash overlap (Å)
1:B:559:GLU:HG3	1:B:561:ASP:H	1.69	0.57
2:C:288:MET:HE2	2:C:288:MET:N	2.19	0.57
1:B:934:PRO:HA	1:B:937:VAL:HG12	1.87	0.57
1:A:876:LEU:HB3	1:A:880:ASP:HB2	1.87	0.57
2:C:251:ALA:HB3	2:C:256:MET:HE1	1.85	0.57
1:A:621:VAL:HG12	1:A:648:VAL:HG11	1.86	0.57
2:C:513:PRO:HA	2:C:544:ARG:NH1	2.19	0.57
1:A:290:ILE:HB	1:A:419:ARG:HH12	1.70	0.56
1:A:721:PHE:HD2	1:A:725:ARG:HH21	1.51	0.56
2:D:436:ASP:O	2:D:440:GLU:HG2	2.05	0.56
1:A:323:TYR:O	1:A:327:MET:HE1	2.04	0.56
1:B:299:VAL:HB	1:B:408:ARG:HH12	1.70	0.56
1:B:381:GLU:HG3	1:B:385:ALA:HB3	1.87	0.56
2:D:479:HIS:HA	2:D:505:ILE:HD12	1.87	0.56
1:A:489:LEU:HD21	1:A:508:ARG:HB3	1.88	0.56
1:B:154:PRO:HD2	1:B:204:VAL:HA	1.87	0.56
1:B:656:SER:HB3	1:B:660:LYS:HE3	1.87	0.56
2:D:51:THR:HA	2:D:54:TRP:CE3	2.40	0.56
1:A:225:ALA:HB3	1:A:233:VAL:HG12	1.88	0.56
1:B:429:LEU:HD13	1:B:442:ILE:HA	1.88	0.56
2:D:439:GLY:O	2:D:443:THR:HG23	2.06	0.56
1:B:528:GLU:CD	1:B:874:THR:HG23	2.31	0.56
2:C:270:ARG:HH21	2:C:274:LEU:HG	1.69	0.56
1:A:176:SER:H	1:A:187:LEU:HD12	1.70	0.56
1:A:699:VAL:HG11	1:A:856:GLU:HB3	1.87	0.56
1:A:27:LEU:HD13	1:A:545:LEU:HD11	1.88	0.56
1:A:178:VAL:HA	1:A:203:VAL:HG23	1.88	0.56
2:C:64:MET:HB3	2:C:337:ILE:HG23	1.88	0.56
2:D:162:VAL:HG21	2:D:178:LEU:HD22	1.88	0.56
2:D:452:LEU:HG	2:D:517:VAL:HG21	1.88	0.56
1:A:56:GLU:HA	1:A:68:GLN:HE21	1.71	0.56
2:D:31:ILE:HD13	2:D:38:VAL:HG21	1.88	0.56
1:A:548:LEU:HB3	1:A:553:ASN:HD21	1.71	0.55
2:D:16:PRO:HD3	2:D:54:TRP:CZ3	2.40	0.55
2:D:352:MET:CE	2:D:356:ASP:HB2	2.35	0.55
2:C:340:SER:HA	2:C:343:THR:HB	1.87	0.55
2:D:8:PHE:H	2:D:60:GLN:HE22	1.54	0.55
2:D:474:ARG:HB3	2:D:499:TYR:HB2	1.88	0.55
1:B:154:PRO:HB3	1:B:233:VAL:HG23	1.88	0.55
1:B:892:VAL:HA	1:B:896:ASN:HB2	1.87	0.55
2:C:492:LEU:HD13	2:C:512:LEU:HD13	1.88	0.55

Continued on next page...

Continued from previous page...

Atom-1	Atom-2	Interatomic distance (Å)	Clash overlap (Å)
2:C:252:GLY:O	2:C:256:MET:HE3	2.07	0.55
1:A:98:THR:HG23	1:A:100:GLY:H	1.71	0.55
1:A:315:TRP:HE1	1:A:328:MET:HE3	1.71	0.55
1:A:421:LYS:H	1:A:424:ILE:HD11	1.71	0.55
1:A:548:LEU:HD23	1:A:551:LEU:HD12	1.89	0.55
1:A:740:GLN:HE21	2:C:185:ASN:HA	1.71	0.55
1:A:891:LEU:HA	1:A:894:LYS:HB2	1.89	0.55
2:C:121:GLU:HA	2:C:124:ARG:HD3	1.88	0.55
2:D:426:VAL:C	2:D:554:MET:CE	2.80	0.55
1:A:98:THR:HG22	1:A:101:THR:HG23	1.88	0.55
1:A:728:PHE:HD2	1:A:744:PHE:CE2	2.24	0.55
1:B:489:LEU:HD13	1:B:492:LEU:HD22	1.88	0.55
2:C:49:THR:O	2:C:53:LEU:HG	2.07	0.55
1:B:204:VAL:HG11	1:B:207:ARG:HH21	1.72	0.55
1:B:48:ALA:HB1	1:B:52:ARG:HH21	1.71	0.55
1:B:387:LEU:HG	1:B:407:MET:HG2	1.89	0.55
1:B:515:ILE:HG12	1:B:548:LEU:HD13	1.88	0.55
2:D:430:THR:H	2:D:431:LYS:HZ3	1.52	0.55
1:B:871:GLU:HG2	1:B:901:ILE:HG22	1.88	0.54
1:B:108:TYR:CD1	1:B:108:TYR:C	2.86	0.54
2:C:531:SER:H	2:C:533:ARG:CZ	2.20	0.54
1:A:3:ASP:HB2	1:A:24:ARG:HB2	1.89	0.54
1:A:399:MET:HA	1:A:402:ARG:HB2	1.89	0.54
1:A:920:GLU:HB2	1:A:924:GLY:HA3	1.89	0.54
2:C:131:LEU:HD23	2:C:132:LEU:HG	1.89	0.54
2:C:132:LEU:HD13	2:C:156:LEU:HB2	1.89	0.54
2:D:485:LEU:C	2:D:486:ARG:NH1	2.66	0.54
1:B:352:LYS:O	1:B:356:GLU:HG3	2.07	0.54
1:B:692:LEU:HD12	1:B:692:LEU:H	1.72	0.54
2:D:437:LEU:O	2:D:441:ILE:HG22	2.08	0.54
1:B:445:VAL:HA	1:B:494:LEU:HB3	1.88	0.54
1:A:232:ILE:HD11	1:A:250:ARG:CZ	2.37	0.54
1:B:303:PRO:HB3	1:B:343:TRP:HB2	1.88	0.54
1:A:909:LYS:HZ1	1:A:953:VAL:HA	1.72	0.54
2:C:51:ALA:HA	2:C:54:ILE:HD12	1.89	0.54
1:A:322:GLU:O	1:A:326:ARG:HG2	2.08	0.54
1:A:103:THR:HG23	1:A:105:VAL:HG13	1.89	0.54
1:A:223:GLU:HA	1:A:226:LEU:HB2	1.90	0.54
1:A:412:CYS:HB2	1:A:417:GLY:HA2	1.89	0.54
1:B:633:ARG:HE	1:B:685:ARG:HD2	1.73	0.54
2:C:552:MET:CE	2:C:554:ALA:HB2	2.37	0.54

Continued on next page...

Continued from previous page...

Atom-1	Atom-2	Interatomic distance (Å)	Clash overlap (Å)
1:A:156:VAL:HB	1:A:201:ILE:HB	1.88	0.53
2:C:453:THR:HG22	2:C:454:LEU:H	1.73	0.53
1:A:728:PHE:CD2	1:A:744:PHE:CE2	2.96	0.53
2:C:61:THR:HA	2:C:334:LEU:O	2.08	0.53
1:A:93:ARG:HH21	1:A:96:ARG:NH2	2.05	0.53
1:A:226:LEU:HD22	1:A:231:GLY:HA2	1.91	0.53
1:A:728:PHE:CD2	1:A:791:VAL:HG11	2.43	0.53
1:B:299:VAL:HG11	1:B:355:LEU:HD21	1.90	0.53
1:B:731:THR:HB	1:B:734:ALA:HB3	1.89	0.53
1:B:802:LEU:HG	1:B:836:LEU:HD23	1.91	0.53
2:C:533:ARG:HD2	2:C:534:SER:H	1.72	0.53
2:D:41:LEU:HD23	2:D:410:PHE:CD1	2.43	0.53
2:C:297:MET:HA	2:C:301:GLY:H	1.74	0.53
2:C:532:SER:O	2:C:536:ILE:HG13	2.08	0.53
3:E:5:DC:H5'	2:D:149:TYR:HD2	1.72	0.53
1:A:88:GLN:HE22	1:A:90:SER:HB2	1.74	0.53
1:B:179:ARG:H	1:B:203:VAL:HA	1.73	0.53
1:B:326:ARG:HE	1:B:327:MET:HE2	1.73	0.53
2:D:295:ASP:C	2:D:299:MET:HE3	2.34	0.53
2:D:353:TYR:HA	2:D:378:PRO:HG2	1.91	0.53
1:B:237:PHE:HE1	1:B:247:ARG:HG2	1.74	0.53
1:B:320:THR:HA	1:B:323:TYR:HB2	1.91	0.53
1:B:825:THR:HG21	1:B:855:SER:HA	1.90	0.53
1:B:504:GLY:O	1:B:508:ARG:HG2	2.09	0.53
1:B:531:ILE:CD1	1:B:703:GLN:HB2	2.34	0.53
2:D:286:GLN:O	2:D:290:MET:HE3	2.08	0.53
2:D:452:LEU:HB2	2:D:520:VAL:HG23	1.91	0.53
1:A:162:GLU:H	1:A:195:LYS:HD3	1.73	0.52
1:B:445:VAL:HG13	1:B:494:LEU:HD12	1.91	0.52
2:C:82:LEU:HD22	2:C:85:ASN:HB2	1.89	0.52
2:D:168:GLU:HG2	2:D:223:ILE:HD11	1.91	0.52
1:B:135:GLN:HA	1:B:138:ASP:HB2	1.92	0.52
2:C:458:MET:H	2:C:458:MET:CE	2.19	0.52
2:D:209:TYR:CE2	2:D:246:PHE:HB2	2.44	0.52
1:B:22:LEU:HD12	1:B:23:PRO:HD2	1.92	0.52
2:C:44:THR:HG22	2:C:414:ARG:HG3	1.91	0.52
2:D:2:VAL:HB	2:D:158:LEU:HD21	1.92	0.52
2:D:342:SER:H	2:D:395:SER:HB2	1.75	0.52
1:B:237:PHE:CE1	1:B:247:ARG:HG2	2.45	0.52
3:E:19:DG:H8	3:E:19:DG:H5''	1.74	0.52
2:D:290:MET:HE2	2:D:290:MET:N	2.24	0.52

Continued on next page...

Continued from previous page...

Atom-1	Atom-2	Interatomic distance (Å)	Clash overlap (Å)
1:A:298:LEU:HA	1:A:301:PRO:HG3	1.91	0.52
1:A:853:LEU:HA	1:A:856:GLU:HB2	1.91	0.52
1:B:429:LEU:HD11	1:B:434:LYS:HD3	1.90	0.52
2:C:180:VAL:HB	2:C:245:PRO:HA	1.92	0.52
2:C:316:ARG:NE	2:C:322:PRO:HA	2.25	0.52
2:C:506:LEU:HA	2:C:510:LEU:HD12	1.91	0.52
2:D:268:GLU:HG2	2:D:371:PRO:HD2	1.91	0.52
2:D:573:ARG:HA	2:D:576:LYS:HG2	1.91	0.52
1:A:303:PRO:HA	1:A:343:TRP:HB2	1.92	0.52
1:A:445:VAL:HG23	1:A:494:LEU:HD22	1.92	0.52
1:A:728:PHE:HE2	1:A:791:VAL:CB	2.23	0.52
1:B:291:ARG:HD2	1:B:291:ARG:N	2.25	0.52
2:D:431:LYS:HD3	2:D:431:LYS:N	2.25	0.52
1:A:723:LYS:HZ2	1:A:818:GLY:HA3	1.75	0.52
1:A:723:LYS:NZ	1:A:818:GLY:HA3	2.24	0.52
1:A:863:GLY:O	1:A:896:ASN:HA	2.10	0.52
2:D:352:MET:HE2	2:D:356:ASP:HB2	1.92	0.52
2:C:296:MET:HE1	2:C:303:CYS:CB	2.40	0.52
1:B:192:LYS:HD3	1:B:194:LYS:HE2	1.91	0.51
1:B:527:ASP:HA	1:B:558:VAL:HB	1.92	0.51
1:B:944:TYR:O	1:B:947:LYS:HG3	2.10	0.51
2:D:3:ARG:HB3	2:D:137:ARG:HB2	1.92	0.51
1:A:429:LEU:HD22	1:A:442:ILE:HD13	1.90	0.51
2:D:8:PHE:HB2	2:D:57:GLU:HA	1.92	0.51
2:D:67:ALA:HB3	2:D:73:ALA:HB2	1.92	0.51
2:D:337:LEU:HD22	2:D:388:ILE:HD12	1.92	0.51
2:D:415:ILE:HD11	2:D:580:TYR:HB3	1.93	0.51
1:B:930:ALA:HB1	1:B:937:VAL:HA	1.92	0.51
2:C:310:SER:HA	2:C:313:ILE:HD12	1.92	0.51
1:A:208:LEU:HD11	1:A:217:ARG:HB3	1.92	0.51
1:B:167:PHE:HZ	1:B:180:VAL:HG11	1.75	0.51
1:B:289:GLY:HA2	1:B:419:ARG:CZ	2.40	0.51
1:B:542:ILE:HA	1:B:545:LEU:HD23	1.92	0.51
1:A:155:VAL:HG12	1:A:229:ALA:HB2	1.92	0.51
1:B:41:LEU:HD12	1:B:45:THR:HG21	1.92	0.51
1:B:108:TYR:CD1	1:B:112:LEU:CD1	2.93	0.51
2:D:10:VAL:HG13	2:D:83:MET:HB3	1.93	0.51
2:D:492:ARG:HH21	2:D:495:ARG:HD3	1.76	0.51
1:B:526:LEU:HD12	1:B:557:VAL:HA	1.91	0.51
1:B:571:ILE:H	1:B:589:GLY:HA2	1.76	0.51
1:B:613:GLU:OE1	1:B:909:LYS:HE2	2.11	0.51

Continued on next page...

Continued from previous page...

Atom-1	Atom-2	Interatomic distance (Å)	Clash overlap (Å)
1:B:672:LEU:O	1:B:676:LEU:CB	2.59	0.51
2:C:460:GLU:O	2:C:464:ASP:OD1	2.29	0.51
2:D:28:GLU:HA	2:D:31:ILE:HG22	1.92	0.51
2:D:145:VAL:O	2:D:148:ILE:HG12	2.11	0.51
2:D:160:ARG:HD2	2:D:254:GLY:H	1.76	0.51
3:F:24:DA:H2"	3:F:25:DA:C8	2.46	0.51
2:D:514:LEU:H	2:D:546:ARG:NH1	2.08	0.51
1:A:429:LEU:HD12	1:A:432:GLU:HB2	1.94	0.50
1:B:24:ARG:HG2	1:B:554:THR:HG21	1.93	0.50
1:B:323:TYR:CZ	1:B:368:ASN:HB3	2.46	0.50
2:D:486:ARG:N	2:D:486:ARG:CD	2.74	0.50
1:A:761:THR:HA	1:A:775:PRO:HA	1.93	0.50
1:A:887:VAL:O	1:A:891:LEU:HG	2.11	0.50
1:A:302:ASP:HA	1:A:686:HIS:O	2.11	0.50
1:A:695:LEU:HD13	1:A:864:ARG:NH1	2.27	0.50
1:B:108:TYR:OH	1:B:477:ILE:HG12	2.11	0.50
1:B:222:VAL:HG23	1:B:233:VAL:HG21	1.94	0.50
1:B:384:LEU:HD23	1:B:408:ARG:HE	1.76	0.50
1:B:853:LEU:HD21	1:B:869:LEU:HD22	1.93	0.50
2:D:81:ARG:HG3	2:D:89:VAL:HB	1.94	0.50
2:D:521:ALA:HB1	2:D:555:TYR:HE2	1.77	0.50
2:D:30:ARG:HH12	2:D:38:VAL:HG22	1.75	0.50
2:C:91:VAL:O	2:C:124:ARG:HD2	2.12	0.50
2:C:296:MET:HE1	2:C:303:CYS:HB2	1.94	0.50
1:B:721:PHE:HE2	1:B:745:SER:HA	1.76	0.50
1:A:107:ASP:O	1:A:111:LEU:HG	2.12	0.50
1:A:208:LEU:HD13	1:A:218:LEU:HD12	1.93	0.50
1:A:652:VAL:HG13	1:A:901:ILE:HG13	1.92	0.50
1:B:38:LYS:HE2	1:B:558:VAL:HG13	1.94	0.50
1:B:729:ALA:HB2	1:B:741:PRO:HB3	1.93	0.50
1:B:753:CYS:SG	1:B:756:CYS:HB2	2.52	0.50
2:D:66:MET:HE1	2:D:144:SER:C	2.37	0.50
2:D:534:SER:O	2:D:538:ILE:HG12	2.12	0.50
1:A:630:VAL:HG12	1:A:641:ASP:HB2	1.94	0.50
1:B:300:VAL:HG13	1:B:311:ALA:HB1	1.93	0.50
1:B:668:LEU:O	1:B:672:LEU:HG	2.12	0.50
1:A:519:LEU:HD22	1:A:522:VAL:HB	1.94	0.49
1:A:536:ARG:HE	1:A:944:TYR:HB3	1.77	0.49
1:B:223:GLU:O	1:B:226:LEU:HB2	2.12	0.49
1:B:565:ILE:O	1:B:566:GLU:HG2	2.12	0.49
1:B:797:THR:HG23	1:B:800:GLU:H	1.77	0.49

Continued on next page...

Continued from previous page...

Atom-1	Atom-2	Interatomic distance (Å)	Clash overlap (Å)
2:C:41:ALA:HA	2:C:394:ALA:HA	1.94	0.49
2:C:129:SER:O	2:C:133:SER:HB3	2.12	0.49
2:D:30:ARG:HH22	2:D:31:ILE:HD13	1.77	0.49
2:D:485:LEU:HA	2:D:488:VAL:HG12	1.94	0.49
1:A:355:LEU:HA	1:A:383:VAL:HG22	1.94	0.49
1:A:450:ILE:HD12	1:A:492:LEU:HB3	1.94	0.49
1:B:237:PHE:HB3	1:B:239:ASP:CG	2.37	0.49
1:B:407:MET:HE3	1:B:408:ARG:HH11	1.76	0.49
2:C:255:ARG:HB3	2:C:256:MET:CE	2.41	0.49
2:C:414:ARG:HG2	2:C:418:LEU:HD12	1.94	0.49
2:D:79:GLU:O	2:D:83:MET:SD	2.70	0.49
2:D:104:TYR:HE1	2:D:109:ASP:HA	1.77	0.49
1:A:33:LEU:HD11	1:A:831:LEU:HD21	1.95	0.49
1:B:487:VAL:HG22	1:B:541:LEU:HA	1.92	0.49
2:C:333:PHE:HZ	2:C:335:LEU:HD23	1.78	0.49
1:B:592:ASP:O	1:B:596:ARG:HG2	2.12	0.49
2:C:46:LYS:HB3	2:C:392:LEU:HD21	1.93	0.49
2:C:63:VAL:HB	2:C:140:VAL:HA	1.94	0.49
2:C:214:ILE:CG2	2:C:224:LEU:HD22	2.21	0.49
2:C:518:VAL:HG12	2:C:550:VAL:HG12	1.93	0.49
2:D:451:VAL:C	2:D:452:LEU:HD23	2.37	0.49
1:A:703:GLN:HE22	1:A:850:ARG:HH22	1.60	0.49
1:B:237:PHE:CD1	1:B:246:HIS:HA	2.46	0.49
1:B:670:ALA:HA	1:B:681:GLN:HE21	1.77	0.49
1:B:752:ARG:NH1	1:B:758:GLY:H	2.10	0.49
2:D:353:TYR:HE1	2:D:377:ARG:HD2	1.77	0.49
1:B:511:LEU:HA	1:B:514:GLN:NE2	2.26	0.49
1:B:603:GLY:HA2	1:B:606:LEU:HB2	1.94	0.49
1:B:806:ILE:HD12	1:B:806:ILE:H	1.77	0.49
2:C:61:THR:HG22	2:C:334:LEU:HB3	1.94	0.49
2:C:124:ARG:HE	2:C:248:HIS:HE1	1.60	0.49
1:B:634:GLU:HB3	1:B:637:LEU:HD23	1.93	0.49
2:C:263:ILE:HD13	2:C:294:ILE:HD12	1.94	0.49
1:A:208:LEU:HD21	1:A:217:ARG:HH11	1.77	0.49
1:B:163:PHE:HB3	1:B:166:LEU:HB3	1.95	0.49
2:C:426:LYS:O	2:C:553:TYR:HA	2.12	0.49
1:A:806:ILE:HD13	1:A:826:LEU:HD23	1.95	0.48
2:C:19:PRO:O	2:C:23:ASP:OD2	2.31	0.48
2:C:456:LYS:O	2:C:460:GLU:HG2	2.13	0.48
2:C:529:LEU:C	2:C:533:ARG:HH12	2.21	0.48
1:B:36:SER:HB2	1:B:578:ALA:HA	1.95	0.48

Continued on next page...

Continued from previous page...

Atom-1	Atom-2	Interatomic distance (Å)	Clash overlap (Å)
1:B:398:GLN:HB3	3:F:28:DA:OP2	2.13	0.48
2:C:532:SER:HA	2:C:535:LEU:HD23	1.95	0.48
3:E:12:DG:H2'	3:E:13:DT:H71	1.95	0.48
1:A:327:MET:HB3	1:A:364:VAL:HG11	1.95	0.48
1:A:115:ARG:HH21	1:A:466:GLU:HA	1.78	0.48
2:C:143:VAL:O	2:C:146:ILE:HG12	2.13	0.48
2:D:119:ASN:HB3	2:D:122:VAL:HB	1.95	0.48
2:D:356:ASP:HA	2:D:359:ARG:HG2	1.95	0.48
1:A:23:PRO:HD2	1:A:28:ILE:HG13	1.95	0.48
2:D:281:LYS:HB3	2:D:284:GLU:HB2	1.94	0.48
2:D:523:LEU:HG	2:D:555:TYR:CD2	2.49	0.48
1:A:604:ALA:O	1:A:608:GLY:HA2	2.13	0.48
1:A:699:VAL:HB	1:A:867:TYR:HD1	1.78	0.48
1:B:307:LEU:HB3	1:B:339:VAL:HG13	1.96	0.48
1:B:534:HIS:CE1	1:B:536:ARG:HB2	2.49	0.48
1:B:573:ASP:N	1:B:587:HIS:HB3	2.29	0.48
1:B:766:MET:HB3	1:B:768:PHE:CE2	2.48	0.48
2:D:163:GLU:HB2	2:D:244:ARG:HD2	1.96	0.48
1:A:285:CYS:HA	1:A:291:ARG:HH22	1.78	0.48
1:A:715:ALA:HB2	1:A:836:LEU:HD12	1.96	0.48
1:B:752:ARG:NH2	1:B:757:THR:HA	2.29	0.48
2:C:333:PHE:CE2	2:C:335:LEU:HB3	2.49	0.48
2:C:476:LEU:HD12	2:C:480:VAL:HG21	1.95	0.48
1:A:108:TYR:HA	1:A:111:LEU:HD12	1.95	0.48
1:B:570:TRP:CE3	1:B:589:GLY:HA3	2.49	0.48
1:B:615:PRO:HD2	1:B:912:ASP:HB3	1.95	0.48
2:C:101:ALA:H	2:C:110:ILE:HG13	1.79	0.48
2:C:284:GLN:O	2:C:288:MET:HE3	2.14	0.48
1:B:233:VAL:HG13	1:B:251:PHE:HB2	1.95	0.48
1:B:326:ARG:HG3	1:B:327:MET:SD	2.52	0.48
1:B:857:LEU:HB3	1:B:891:LEU:HD22	1.96	0.47
3:F:14:DG:H2''	3:F:15:DA:H5'	1.96	0.47
1:A:726:THR:HA	1:A:741:PRO:HG3	1.96	0.47
2:C:266:GLU:HG3	2:C:312:HIS:CE1	2.50	0.47
2:D:65:VAL:HG13	2:D:142:VAL:HG23	1.96	0.47
2:D:78:ASN:O	2:D:82:GLU:HG3	2.14	0.47
1:B:407:MET:CE	1:B:408:ARG:NH1	2.77	0.47
2:C:455:THR:CG2	2:C:458:MET:HE1	2.44	0.47
2:D:490:LEU:O	2:D:494:LEU:HG	2.14	0.47
1:A:629:VAL:HG12	1:A:642:VAL:HB	1.95	0.47
1:A:933:THR:HG22	1:A:935:GLU:H	1.78	0.47

Continued on next page...

Continued from previous page...

Atom-1	Atom-2	Interatomic distance (Å)	Clash overlap (Å)
1:B:864:ARG:HA	1:B:896:ASN:HA	1.96	0.47
2:C:51:ALA:O	2:C:55:GLU:HG3	2.14	0.47
2:C:88:GLU:HG3	2:C:127:ALA:HA	1.96	0.47
2:D:486:ARG:HH11	2:D:486:ARG:N	2.13	0.47
1:A:605:TYR:HB2	1:A:878:PHE:HB2	1.96	0.47
1:A:626:GLN:HE21	1:A:643:SER:HB2	1.79	0.47
1:B:34:SER:HA	1:B:38:LYS:HZ2	1.80	0.47
1:B:208:LEU:HD11	1:B:217:ARG:HB3	1.96	0.47
2:C:361:LEU:HA	2:C:366:PHE:HD2	1.79	0.47
2:D:16:PRO:HD2	2:D:54:TRP:CZ2	2.47	0.47
1:A:418:THR:HG21	1:A:442:ILE:HG22	1.95	0.47
1:A:904:ASN:HB3	1:A:907:VAL:HG22	1.96	0.47
1:B:228:LEU:HD23	2:C:197:ARG:HH12	1.80	0.47
2:D:90:GLU:HG3	2:D:129:ALA:HB2	1.96	0.47
2:D:295:ASP:HA	2:D:299:MET:HE3	1.96	0.47
1:A:326:ARG:HD3	1:A:366:TYR:HB2	1.97	0.47
1:A:327:MET:CE	1:A:327:MET:H	2.28	0.47
1:B:299:VAL:HA	1:B:407:MET:HE1	1.97	0.47
1:B:402:ARG:HE	1:B:682:VAL:HG22	1.79	0.47
1:B:584:ARG:C	1:B:585:ILE:HD13	2.39	0.47
1:B:692:LEU:HD12	1:B:692:LEU:N	2.30	0.47
2:C:241:LEU:HD12	2:C:241:LEU:HA	1.80	0.47
2:C:544:ARG:NH2	2:C:545:ASN:HD22	2.12	0.47
3:E:21:DG:H2"	3:E:22:DG:H8	1.78	0.47
2:D:40:LEU:HB2	2:D:393:TYR:O	2.15	0.47
1:A:862:THR:N	1:A:863:GLY:HA2	2.30	0.47
1:A:872:PRO:HB2	1:A:881:ILE:HG12	1.97	0.47
1:B:769:LEU:HD12	1:B:770:PRO:HD2	1.97	0.47
2:D:49:SER:HB3	2:D:76:LEU:HD22	1.96	0.47
2:D:66:MET:HE1	2:D:144:SER:O	2.15	0.47
2:D:295:ASP:HA	2:D:299:MET:CE	2.44	0.47
2:D:486:ARG:O	2:D:489:GLU:HG3	2.14	0.47
1:A:733:GLU:HG2	1:A:734:ALA:N	2.29	0.47
1:B:51:GLN:HA	1:B:54:TYR:CD1	2.50	0.47
1:B:650:THR:HG23	1:B:899:ILE:HG23	1.97	0.47
3:E:2:DA:H2"	3:E:3:DG:N7	2.30	0.47
2:D:30:ARG:HG2	2:D:30:ARG:O	2.13	0.47
2:D:423:PRO:HD3	2:D:545:ALA:HA	1.97	0.47
1:B:483:PHE:HE1	1:B:547:ARG:HD2	1.79	0.47
2:C:62:LEU:HD13	2:C:325:LEU:HD23	1.97	0.47
2:C:92:SER:HB3	2:C:94:TYR:HD2	1.80	0.47

Continued on next page...

Continued from previous page...

Atom-1	Atom-2	Interatomic distance (Å)	Clash overlap (Å)
1:A:7:VAL:HB	1:A:20:LEU:HD23	1.96	0.46
1:A:8:LYS:HE2	1:A:8:LYS:HB2	1.59	0.46
2:C:311:ARG:HB2	2:C:316:ARG:NH2	2.31	0.46
2:D:297:GLU:O	2:D:300:ARG:HG2	2.15	0.46
2:D:485:LEU:HG	2:D:486:ARG:HD2	1.97	0.46
1:A:756:CYS:SG	1:A:776:CYS:HB3	2.49	0.46
1:A:826:LEU:HD12	1:A:826:LEU:C	2.40	0.46
1:B:862:THR:H	1:B:863:GLY:HA2	1.79	0.46
3:E:27:DC:H2'	3:E:28:DA:C8	2.50	0.46
1:A:608:GLY:C	1:A:610:GLU:H	2.22	0.46
1:B:672:LEU:O	1:B:676:LEU:HB3	2.14	0.46
2:C:160:VAL:HG21	2:C:176:LEU:HD23	1.97	0.46
2:D:30:ARG:NH1	2:D:38:VAL:HG22	2.31	0.46
2:D:299:MET:SD	2:D:299:MET:N	2.87	0.46
1:B:822:TYR:O	1:B:826:LEU:HD23	2.15	0.46
2:C:3:GLY:HA2	2:C:135:ARG:HB3	1.97	0.46
2:C:564:ALA:O	2:C:567:GLU:HG3	2.15	0.46
1:B:510:ARG:HA	1:B:510:ARG:CZ	2.46	0.46
1:B:632:ALA:O	1:B:637:LEU:HB3	2.16	0.46
1:B:698:LEU:HA	1:B:866:VAL:O	2.16	0.46
2:D:562:SER:O	2:D:565:GLU:HG3	2.15	0.46
1:A:290:ILE:HD11	1:A:292:LYS:HG2	1.97	0.46
2:C:139:VAL:HB	2:C:329:PHE:HZ	1.81	0.46
2:C:196:VAL:HG12	2:C:201:VAL:HG22	1.98	0.46
2:D:50:ALA:HB1	2:D:54:TRP:CZ2	2.51	0.46
1:A:93:ARG:HH21	1:A:96:ARG:HH21	1.62	0.46
1:B:105:VAL:HG12	1:B:480:ARG:HH21	1.81	0.46
1:B:614:ILE:HD11	1:B:934:PRO:HG2	1.97	0.46
2:C:483:LEU:HA	2:C:486:VAL:HG12	1.97	0.46
1:A:668:LEU:O	1:A:672:LEU:HD12	2.16	0.46
1:B:511:LEU:HD22	1:B:541:LEU:HD11	1.97	0.46
1:B:663:LEU:HA	1:B:667:ILE:HD11	1.96	0.46
2:C:452:THR:HG22	2:C:520:ILE:HA	1.97	0.46
2:D:33:ALA:HB3	2:D:35:GLU:OE1	2.15	0.46
1:A:651:SER:HB3	1:A:914:ILE:HD13	1.98	0.46
2:C:37:VAL:HA	2:C:391:TYR:HB2	1.97	0.46
2:C:73:GLN:HA	2:C:76:ASN:HD21	1.80	0.46
2:C:81:MET:SD	2:C:82:LEU:HG	2.56	0.46
2:C:189:PHE:HE1	2:C:194:PHE:HA	1.80	0.46
2:D:523:LEU:HG	2:D:555:TYR:HD2	1.80	0.46
1:A:487:VAL:HG13	1:A:540:ARG:HH22	1.81	0.46

Continued on next page...

Continued from previous page...

Atom-1	Atom-2	Interatomic distance (Å)	Clash overlap (Å)
1:B:108:TYR:CZ	1:B:477:ILE:CG1	2.99	0.46
1:B:179:ARG:N	1:B:203:VAL:HA	2.31	0.46
1:B:876:LEU:HD13	1:B:881:ILE:HG12	1.98	0.46
2:C:367:ARG:HD3	2:C:367:ARG:HA	1.71	0.46
2:C:413:ILE:HG23	2:C:575:GLN:HA	1.97	0.46
2:C:480:VAL:HG13	2:C:484:ARG:HH11	1.81	0.46
2:D:93:VAL:HG23	2:D:143:ALA:HB1	1.97	0.46
2:D:485:LEU:CB	2:D:486:ARG:HH11	2.28	0.46
1:B:331:LEU:HG	1:B:337:PHE:HE1	1.81	0.45
1:B:397:GLU:CD	3:F:27:DC:H5"	2.41	0.45
2:C:73:GLN:HA	2:C:76:ASN:ND2	2.31	0.45
2:C:466:LEU:O	2:C:466:LEU:HD12	2.16	0.45
1:A:151:VAL:HG11	1:A:221:SER:HB2	1.97	0.45
1:B:29:VAL:HG22	1:B:557:VAL:HB	1.96	0.45
1:B:299:VAL:HG23	1:B:312:VAL:HG13	1.99	0.45
1:B:701:VAL:HG11	1:B:853:LEU:HD22	1.98	0.45
1:B:723:LYS:HE2	1:B:818:GLY:O	2.16	0.45
2:C:467:LEU:HB3	2:C:473:VAL:HG22	1.98	0.45
3:E:2:DA:H2"	3:E:3:DG:C8	2.51	0.45
2:D:302:VAL:HG23	2:D:303:GLY:N	2.31	0.45
1:A:106:TYR:O	1:A:109:LEU:CD1	2.58	0.45
1:B:159:ARG:HB3	1:B:163:PHE:CZ	2.52	0.45
1:B:538:ASN:C	1:B:540:ARG:H	2.24	0.45
1:B:613:GLU:OE1	1:B:613:GLU:HA	2.17	0.45
1:A:294:VAL:HB	1:A:500:THR:HG21	1.99	0.45
1:A:640:ILE:HG21	1:A:928:VAL:H	1.81	0.45
1:B:51:GLN:HA	1:B:54:TYR:CE1	2.50	0.45
1:B:108:TYR:O	1:B:112:LEU:HD13	2.17	0.45
2:C:544:ARG:HH22	2:C:545:ASN:HD22	1.63	0.45
3:F:25:DA:H2'	3:F:26:DC:O4'	2.16	0.45
1:A:157:ARG:CZ	1:A:250:ARG:HH22	2.30	0.45
1:A:244:ALA:HB3	1:A:247:ARG:HA	1.99	0.45
1:B:93:ARG:HB2	1:B:498:ALA:HB1	1.97	0.45
1:B:325:THR:HA	1:B:328:MET:HG3	1.98	0.45
1:B:826:LEU:HD13	1:B:851:VAL:HG21	1.99	0.45
2:C:176:LEU:O	2:C:180:VAL:HG13	2.17	0.45
2:C:270:ARG:HD3	2:C:362:VAL:HG13	1.98	0.45
1:A:493:SER:HB3	1:A:496:ARG:HD3	1.99	0.45
1:B:137:VAL:HG12	1:B:218:LEU:HD11	1.99	0.45
1:B:425:LEU:HD12	1:B:426:ALA:N	2.32	0.45
1:B:634:GLU:N	1:B:637:LEU:HB2	2.31	0.45

Continued on next page...

Continued from previous page...

Atom-1	Atom-2	Interatomic distance (Å)	Clash overlap (Å)
1:B:913:TRP:CZ2	1:B:932:GLY:HA2	2.51	0.45
2:C:263:ILE:HG21	2:C:294:ILE:HG13	1.99	0.45
2:C:464:ASP:HA	2:C:467:LEU:HG	1.99	0.45
1:A:241:GLU:HG2	1:A:245:PRO:O	2.17	0.45
1:B:510:ARG:HG2	1:B:510:ARG:HH11	1.82	0.45
2:C:19:PRO:O	2:C:22:ILE:HG22	2.17	0.45
2:C:132:LEU:HB3	2:C:156:LEU:HD13	1.98	0.45
2:D:28:GLU:HG3	2:D:58:ARG:CZ	2.47	0.45
2:D:417:PRO:HA	2:D:580:TYR:HE2	1.82	0.45
1:B:108:TYR:O	1:B:112:LEU:CD1	2.65	0.45
1:B:315:TRP:CD1	1:B:324:PHE:HD2	2.33	0.45
1:B:507:GLN:HG2	1:B:529:PRO:HB2	1.99	0.45
2:D:41:LEU:HB2	2:D:410:PHE:HE1	1.81	0.45
1:A:310:GLY:HA3	1:A:675:ARG:HG3	1.99	0.45
2:D:3:ARG:HH21	2:D:133:LEU:HD22	1.82	0.45
2:D:35:GLU:CD	2:D:35:GLU:H	2.24	0.45
1:A:305:ARG:HH22	1:A:309:GLN:HB3	1.81	0.44
1:B:241:GLU:HG2	1:B:243:GLY:H	1.82	0.44
1:B:492:LEU:HG	1:B:496:ARG:HD2	1.98	0.44
1:B:721:PHE:HE1	1:B:802:LEU:HD11	1.82	0.44
2:C:263:ILE:HG13	2:C:312:HIS:CD2	2.52	0.44
2:D:68:PRO:HD2	2:D:72:LEU:HD23	1.99	0.44
1:A:216:ARG:HH22	2:D:172:ARG:HB2	1.82	0.44
1:B:179:ARG:HG3	1:B:184:VAL:HG22	1.98	0.44
1:B:634:GLU:H	1:B:637:LEU:HB2	1.82	0.44
2:C:293:ASP:O	2:C:297:MET:SD	2.74	0.44
2:C:456:LYS:H	2:C:456:LYS:HG2	1.62	0.44
1:A:139:GLN:HB2	1:A:251:PHE:HZ	1.83	0.44
2:C:512:LEU:HD23	2:C:515:VAL:HB	1.99	0.44
3:E:26:DC:H3'	3:E:27:DC:C6	2.52	0.44
1:A:63:ARG:HA	1:A:63:ARG:HD3	1.77	0.44
1:A:662:THR:HA	1:A:666:ASP:HB3	1.99	0.44
1:B:291:ARG:HD2	1:B:291:ARG:H	1.81	0.44
1:B:337:PHE:HZ	1:B:354:ILE:HD13	1.83	0.44
1:B:514:GLN:OE1	1:B:515:ILE:HG13	2.17	0.44
3:E:4:DT:H2'	3:E:5:DC:C2	2.52	0.44
2:D:230:HIS:HB3	2:D:235:GLU:H	1.83	0.44
1:A:322:GLU:H	1:A:322:GLU:HG2	1.60	0.44
1:A:680:ARG:HD3	3:F:14:DG:H5'	2.00	0.44
2:D:80:LEU:O	2:D:84:LEU:HB2	2.17	0.44
2:D:134:LEU:HD13	2:D:158:LEU:HB2	1.98	0.44

Continued on next page...

Continued from previous page...

Atom-1	Atom-2	Interatomic distance (Å)	Clash overlap (Å)
1:A:67:GLY:O	1:A:69:MET:HE2	2.17	0.44
1:A:241:GLU:HG2	1:A:246:HIS:HA	1.97	0.44
1:A:610:GLU:HB2	1:A:882:ARG:HD3	1.99	0.44
1:A:614:ILE:HB	1:A:910:THR:HG23	1.99	0.44
1:A:617:ILE:HG22	1:A:619:ARG:H	1.83	0.44
1:B:167:PHE:HE2	1:B:193:LEU:HD11	1.82	0.44
1:B:194:LYS:HA	1:B:194:LYS:HD3	1.83	0.44
1:B:559:GLU:HG2	1:B:564:THR:HG21	2.00	0.44
1:B:857:LEU:HG	1:B:867:TYR:CE2	2.52	0.44
1:A:33:LEU:HB3	1:A:880:ASP:OD2	2.18	0.44
2:D:205:ILE:HG22	2:D:214:VAL:HB	2.00	0.44
2:D:343:HIS:CE1	2:D:400:PRO:HD3	2.53	0.44
1:A:290:ILE:HD13	1:A:446:CYS:HB3	2.00	0.44
1:A:672:LEU:HB3	1:A:676:LEU:HD22	2.00	0.44
1:B:96:ARG:HH12	3:F:28:DA:H8	1.65	0.44
1:B:511:LEU:HG	1:B:514:GLN:NE2	2.33	0.44
2:C:504:ASN:ND2	3:F:2:DA:H4'	2.32	0.44
2:C:552:MET:HE3	2:C:553:TYR:C	2.43	0.44
1:A:444:GLU:HB3	1:A:445:VAL:H	1.59	0.44
1:B:629:VAL:HG13	1:B:629:VAL:O	2.18	0.44
1:B:905:LEU:HD11	1:B:949:LEU:HA	1.98	0.44
2:C:33:GLU:HG3	2:C:35:ASP:H	1.82	0.44
2:D:459:LYS:H	2:D:459:LYS:HD2	1.83	0.44
1:A:33:LEU:HA	1:A:876:LEU:HA	1.99	0.43
1:A:389:ARG:O	1:A:393:GLN:HB3	2.18	0.43
1:A:618:ARG:HE	1:A:912:ASP:HA	1.83	0.43
1:A:722:ASP:HA	1:A:725:ARG:HD2	1.98	0.43
1:B:18:VAL:HG11	1:B:585:ILE:HD11	2.00	0.43
1:B:511:LEU:HD21	1:B:544:THR:OG1	2.18	0.43
2:D:160:ARG:HE	2:D:257:ARG:HD2	1.83	0.43
1:A:522:VAL:HG13	1:A:524:TYR:CE1	2.53	0.43
1:A:740:GLN:NE2	2:C:185:ASN:HA	2.32	0.43
1:B:149:PHE:H	1:B:210:VAL:HG11	1.83	0.43
2:C:492:LEU:HB3	2:C:497:TYR:OH	2.18	0.43
2:D:104:TYR:CD2	2:D:362:ASN:HB3	2.44	0.43
2:D:264:ALA:O	2:D:267:GLU:HG3	2.18	0.43
1:B:83:ALA:HB1	1:B:525:VAL:HG22	1.99	0.43
1:B:307:LEU:HD11	1:B:312:VAL:HG23	2.00	0.43
1:B:528:GLU:HG3	1:B:559:GLU:OE1	2.19	0.43
1:B:831:LEU:HD11	1:B:847:GLU:HG3	2.00	0.43
2:C:544:ARG:O	2:C:544:ARG:HG2	2.19	0.43

Continued on next page...

Continued from previous page...

Atom-1	Atom-2	Interatomic distance (Å)	Clash overlap (Å)
2:D:254:GLY:O	2:D:258:MET:SD	2.76	0.43
2:D:559:ILE:HG23	2:D:563:MET:HB2	2.00	0.43
2:D:561:ASP:HA	2:D:564:ARG:CZ	2.49	0.43
1:B:368:ASN:HD21	1:B:370:TYR:HB2	1.83	0.43
1:B:677:ASN:HD21	1:B:698:LEU:H	1.65	0.43
2:C:214:ILE:HG22	2:C:224:LEU:HD23	1.91	0.43
2:C:561:MET:SD	2:C:565:ILE:HD12	2.58	0.43
2:D:169:GLU:HG3	2:D:222:GLU:HB2	1.99	0.43
1:A:167:PHE:HE1	1:A:178:VAL:HG21	1.83	0.43
1:A:835:ARG:HG2	1:A:838:GLN:HB2	2.00	0.43
1:B:297:GLU:H	1:B:297:GLU:HG3	1.67	0.43
1:B:575:GLY:HA2	1:B:582:GLY:O	2.19	0.43
1:B:894:LYS:HE3	1:B:894:LYS:HB3	1.81	0.43
2:C:100:GLU:HG3	2:C:111:GLU:HA	2.01	0.43
2:C:132:LEU:HD12	2:C:155:TYR:CE2	2.53	0.43
2:C:270:ARG:HE	2:C:274:LEU:HG	1.84	0.43
2:D:4:ALA:H	2:D:136:ARG:HA	1.84	0.43
1:A:30:PHE:CZ	1:A:556:ILE:HD12	2.54	0.43
1:B:355:LEU:HD23	1:B:355:LEU:HA	1.82	0.43
1:B:402:ARG:HD2	1:B:402:ARG:HA	1.80	0.43
1:B:494:LEU:HA	1:B:496:ARG:NH1	2.33	0.43
1:B:728:PHE:HZ	1:B:801:VAL:HG11	1.82	0.43
2:C:523:ALA:HB1	2:C:530:ARG:HD2	2.01	0.43
1:A:179:ARG:HE	1:A:182:GLY:HA2	1.83	0.43
1:A:840:ALA:N	1:A:841:PRO:HD2	2.34	0.43
2:D:133:LEU:HD23	2:D:133:LEU:HA	1.79	0.43
2:D:165:LYS:HD2	2:D:166:VAL:O	2.19	0.43
1:A:389:ARG:HH22	1:A:390:LYS:HD3	1.84	0.43
1:A:721:PHE:O	1:A:725:ARG:HG3	2.19	0.43
1:B:828:ASP:O	1:B:883:LYS:HB3	2.19	0.43
1:B:854:ALA:HA	1:B:857:LEU:HD13	2.01	0.43
2:C:290:THR:HG21	2:C:368:LEU:HD21	2.00	0.43
1:A:937:VAL:HG22	1:A:946:GLY:HA3	2.01	0.43
2:C:163:LYS:HG2	2:C:166:GLU:HB3	2.01	0.43
2:D:59:LEU:HD12	2:D:336:LEU:HD22	2.00	0.43
1:A:232:ILE:HG13	1:A:252:SER:CA	2.47	0.42
1:A:327:MET:HE3	1:A:364:VAL:HG21	2.01	0.42
1:A:387:LEU:HB3	1:A:391:MET:CE	2.48	0.42
1:B:84:VAL:HG23	1:B:86:ILE:HD11	2.01	0.42
1:B:103:THR:OG1	1:B:105:VAL:HG22	2.19	0.42
1:B:493:SER:O	1:B:496:ARG:HD3	2.19	0.42

Continued on next page...

Continued from previous page...

Atom-1	Atom-2	Interatomic distance (Å)	Clash overlap (Å)
1:B:605:TYR:HB2	1:B:878:PHE:CD2	2.53	0.42
1:B:629:VAL:O	1:B:641:ASP:HA	2.19	0.42
1:B:722:ASP:O	1:B:725:ARG:HG2	2.19	0.42
2:C:79:ARG:HH22	2:C:123:LEU:HD22	1.84	0.42
1:A:36:SER:HB2	1:A:575:GLY:HA3	2.01	0.42
1:A:412:CYS:HB3	1:A:415:CYS:SG	2.59	0.42
3:E:6:DA:H4'	2:D:308:ILE:HG22	1.99	0.42
3:F:2:DA:H2'	3:F:3:DG:C6	2.54	0.42
2:D:203:VAL:HB	2:D:216:ILE:HG13	2.01	0.42
1:B:315:TRP:HD1	1:B:324:PHE:HD2	1.67	0.42
2:D:525:ALA:HB2	2:D:532:ARG:HH11	1.84	0.42
1:A:163:PHE:HD1	1:A:166:LEU:HB2	1.84	0.42
1:A:391:MET:HA	1:A:400:LYS:HB2	2.01	0.42
1:A:732:THR:O	1:A:736:VAL:HG22	2.20	0.42
1:A:909:LYS:NZ	1:A:953:VAL:HA	2.34	0.42
1:B:511:LEU:HD22	1:B:541:LEU:CD1	2.48	0.42
1:B:621:VAL:HG12	1:B:625:ARG:HG2	2.01	0.42
1:B:43:PHE:O	1:B:47:PHE:HD2	2.02	0.42
2:D:18:GLY:O	2:D:21:PRO:HD2	2.19	0.42
2:D:175:LEU:O	2:D:178:LEU:HG	2.20	0.42
1:A:232:ILE:HD11	1:A:250:ARG:NH2	2.34	0.42
1:A:288:LEU:H	1:A:419:ARG:HG3	1.85	0.42
1:B:118:THR:HA	1:B:119:PRO:HD3	1.93	0.42
1:B:449:SER:HB2	1:B:493:SER:HA	2.02	0.42
2:C:109:TYR:CE2	2:C:111:GLU:HG3	2.54	0.42
2:C:266:GLU:HG3	2:C:312:HIS:HE1	1.85	0.42
2:C:274:LEU:HB3	2:C:283:ALA:HB2	2.01	0.42
2:C:303:CYS:SG	2:C:306:ILE:HB	2.59	0.42
2:D:16:PRO:HG3	2:D:24:ILE:HD13	2.02	0.42
2:D:191:PHE:CZ	2:D:206:ILE:HG13	2.54	0.42
1:A:831:LEU:HD22	1:A:833:TYR:CE1	2.55	0.42
1:B:285:CYS:HB3	1:B:412:CYS:SG	2.60	0.42
2:D:362:ASN:O	2:D:366:TYR:HB2	2.19	0.42
2:D:429:PRO:CB	2:D:431:LYS:NZ	2.73	0.42
1:A:444:GLU:O	1:A:448:LEU:HB2	2.20	0.42
1:B:323:TYR:CD2	1:B:374:ARG:HD2	2.54	0.42
2:D:205:ILE:HD12	2:D:205:ILE:HA	1.83	0.42
2:D:416:ARG:HD2	2:D:420:LEU:HB2	2.01	0.42
1:A:180:VAL:O	1:A:183:VAL:HG12	2.20	0.42
1:A:786:ARG:HA	1:A:786:ARG:HD2	1.87	0.42
1:B:298:LEU:HD23	1:B:685:ARG:HG3	2.00	0.42

Continued on next page...

Continued from previous page...

Atom-1	Atom-2	Interatomic distance (Å)	Clash overlap (Å)
1:B:520:VAL:HG22	1:B:551:LEU:HB3	2.02	0.42
2:D:65:VAL:HG23	2:D:338:VAL:HB	2.01	0.42
2:D:182:VAL:HG23	2:D:184:TYR:CD1	2.54	0.42
2:D:313:ARG:HB2	2:D:318:ARG:NH2	2.35	0.42
1:A:301:PRO:O	1:A:303:PRO:HD3	2.20	0.42
1:A:354:ILE:HD12	1:A:354:ILE:HA	1.84	0.42
1:A:612:ILE:HG22	1:A:613:GLU:H	1.84	0.42
1:B:864:ARG:CD	1:B:864:ARG:H	2.33	0.42
2:C:74:LEU:HD12	2:C:74:LEU:HA	1.85	0.42
2:D:423:PRO:HG3	2:D:544:ALA:HB3	2.02	0.42
1:A:67:GLY:O	1:A:68:GLN:HB2	2.19	0.41
1:A:667:ILE:HA	1:A:683:PRO:O	2.20	0.41
1:B:29:VAL:HB	1:B:571:ILE:HG12	2.02	0.41
1:B:326:ARG:NH1	1:B:366:TYR:H	2.18	0.41
2:C:39:LEU:HD13	2:C:396:PRO:HG3	2.01	0.41
2:D:37:ASP:HB3	2:D:406:THR:HG22	2.01	0.41
2:D:406:THR:HB	2:D:409:GLU:HG3	2.01	0.41
2:D:499:TYR:HE2	2:D:502:LEU:HG	1.85	0.41
1:A:211:LYS:HG2	1:A:214:ALA:HB2	2.02	0.41
1:A:573:ASP:HB3	1:A:587:HIS:HB3	2.01	0.41
1:A:749:LYS:HD2	1:A:749:LYS:HA	1.78	0.41
1:B:38:LYS:HB3	1:B:574:ILE:HB	2.01	0.41
1:B:108:TYR:OH	1:B:477:ILE:CG1	2.68	0.41
1:B:424:ILE:O	1:B:428:THR:HG23	2.19	0.41
1:B:720:VAL:HG22	1:B:822:TYR:CD2	2.55	0.41
2:C:483:LEU:H	2:C:483:LEU:HD23	1.85	0.41
2:D:527:LYS:HB3	2:D:527:LYS:HE3	1.82	0.41
1:A:301:PRO:HG2	1:A:684:GLY:O	2.20	0.41
1:A:627:LEU:HD22	1:A:690:THR:O	2.21	0.41
1:A:696:ASP:HB2	1:A:860:ARG:NH1	2.35	0.41
1:B:271:ARG:NH1	1:B:423:GLU:HB2	2.35	0.41
1:B:327:MET:SD	1:B:327:MET:N	2.94	0.41
2:C:180:VAL:HG23	2:C:182:TYR:HD1	1.85	0.41
1:B:612:ILE:HD11	1:B:882:ARG:HG2	2.02	0.41
1:B:724:ILE:HD13	1:B:724:ILE:HA	1.89	0.41
1:B:920:GLU:HB3	1:B:924:GLY:HA3	2.03	0.41
3:E:13:DT:H2''	3:E:14:DG:O4'	2.20	0.41
2:D:295:ASP:CA	2:D:299:MET:HE3	2.51	0.41
1:A:86:ILE:HB	1:A:526:LEU:HG	2.02	0.41
1:A:520:VAL:HG12	1:A:551:LEU:HB3	2.03	0.41
1:B:305:ARG:HH12	1:B:692:LEU:HD22	1.85	0.41

Continued on next page...

Continued from previous page...

Atom-1	Atom-2	Interatomic distance (Å)	Clash overlap (Å)
2:C:152:PRO:HG3	2:C:327:ASP:O	2.21	0.41
2:C:457:LYS:HG3	2:C:458:MET:CE	2.49	0.41
3:E:19:DG:H2'	3:E:20:DT:O4'	2.20	0.41
2:D:339:ILE:HG21	2:D:342:SER:HB2	2.02	0.41
1:A:222:VAL:HG22	1:A:233:VAL:HG21	2.02	0.41
1:B:274:SER:HB2	1:B:279:TYR:HB2	2.03	0.41
1:B:389:ARG:NH1	1:B:393:GLN:HG2	2.36	0.41
1:B:720:VAL:HG22	1:B:822:TYR:HD2	1.86	0.41
1:B:843:LEU:HD23	1:B:843:LEU:HA	1.69	0.41
1:A:176:SER:HA	1:A:187:LEU:HB2	2.02	0.41
1:A:878:PHE:HA	1:A:881:ILE:HD12	2.02	0.41
2:C:256:MET:HE2	2:C:256:MET:H	1.84	0.41
2:D:64:LEU:HB2	2:D:331:PHE:CE2	2.55	0.41
1:A:323:TYR:CE1	1:A:368:ASN:HB3	2.56	0.41
1:A:383:VAL:HA	1:A:386:PHE:HB3	2.02	0.41
1:A:574:ILE:HD12	1:A:585:ILE:HA	2.03	0.41
1:A:831:LEU:HD23	1:A:831:LEU:HA	1.92	0.41
1:A:869:LEU:HD23	1:A:898:VAL:HG13	2.03	0.41
1:B:179:ARG:HB2	1:B:204:VAL:HG23	2.03	0.41
1:B:294:VAL:HG22	1:B:295:ASP:HA	2.02	0.41
2:D:102:GLU:HG3	2:D:113:GLU:HA	2.01	0.41
1:A:98:THR:HG23	1:A:100:GLY:N	2.35	0.41
1:A:332:GLY:HA2	1:A:337:PHE:CZ	2.56	0.41
1:A:465:ARG:HD3	1:A:465:ARG:HA	1.90	0.41
1:A:579:GLY:HA3	1:A:833:TYR:HB2	2.03	0.41
1:A:591:TYR:CE1	1:A:594:LEU:HD22	2.56	0.41
1:B:313:ALA:HB3	1:B:314:PRO:HD3	2.03	0.41
1:B:326:ARG:CD	1:B:327:MET:HE1	2.50	0.41
1:B:384:LEU:CD2	1:B:408:ARG:HE	2.33	0.41
1:B:562:GLU:HG2	1:B:878:PHE:HZ	1.85	0.41
2:C:27:ARG:HA	2:C:30:ASN:ND2	2.36	0.41
2:C:88:GLU:CG	2:C:127:ALA:HA	2.51	0.41
2:C:358:LYS:HB3	2:C:372:CYS:SG	2.61	0.41
2:C:454:LEU:HD21	2:C:522:ASP:HB3	2.02	0.41
2:C:512:LEU:HD12	2:C:513:PRO:HD2	2.03	0.41
3:E:3:DG:N2	2:D:352:MET:SD	2.94	0.41
3:E:21:DG:H2''	3:E:22:DG:C8	2.56	0.41
3:F:10:DC:H2''	3:F:11:DA:C8	2.55	0.41
3:F:36:DC:H4'	3:F:37:DT:OP1	2.21	0.41
2:D:28:GLU:O	2:D:31:ILE:HG22	2.21	0.41
2:D:81:ARG:NH2	2:D:125:LEU:HD13	2.36	0.41

Continued on next page...

Continued from previous page...

Atom-1	Atom-2	Interatomic distance (Å)	Clash overlap (Å)
2:D:206:ILE:HD11	2:D:231:PRO:HB3	2.01	0.41
2:D:272:ARG:HE	2:D:276:LEU:HG	1.86	0.41
2:D:324:PRO:O	2:D:326:THR:HG23	2.21	0.41
2:D:429:PRO:HB3	2:D:431:LYS:HZ1	1.81	0.41
1:A:709:THR:O	1:A:840:ALA:HB3	2.21	0.41
1:B:326:ARG:CD	1:B:327:MET:CE	2.99	0.41
1:B:444:GLU:HB3	1:B:445:VAL:H	1.60	0.41
1:B:860:ARG:HG3	1:B:862:THR:CG2	2.46	0.41
2:C:60:PRO:HA	2:C:137:VAL:O	2.21	0.41
2:C:213:ARG:CZ	2:C:225:TYR:HB2	2.51	0.41
2:C:467:LEU:HA	2:C:471:ILE:O	2.21	0.41
2:D:302:VAL:HG21	2:D:304:PHE:CE1	2.56	0.41
2:D:534:SER:HA	2:D:537:LEU:HD12	2.03	0.41
1:A:303:PRO:HB3	1:A:351:ARG:NH1	2.35	0.40
1:A:632:ALA:N	1:A:639:GLY:HA2	2.36	0.40
1:B:831:LEU:HD12	1:B:834:VAL:HG21	2.03	0.40
1:B:868:ILE:C	1:B:869:LEU:HD23	2.45	0.40
2:C:262:ALA:HB3	2:C:312:HIS:HB3	2.03	0.40
2:D:153:THR:HG23	2:D:257:ARG:HH22	1.85	0.40
1:A:194:LYS:HA	1:A:194:LYS:HD3	1.93	0.40
1:A:398:GLN:OE1	3:E:28:DA:H3'	2.21	0.40
1:A:752:ARG:NH2	1:A:754:GLU:HA	2.33	0.40
1:B:534:HIS:ND1	1:B:536:ARG:HB2	2.36	0.40
2:C:529:LEU:C	2:C:533:ARG:HH22	2.29	0.40
2:D:425:VAL:CG1	2:D:567:ILE:HG23	2.46	0.40
2:D:526:ASP:HB2	2:D:558:LYS:HG3	2.04	0.40
1:A:162:GLU:N	1:A:195:LYS:HA	2.35	0.40
1:B:149:PHE:CZ	1:B:151:VAL:HB	2.56	0.40
1:B:323:TYR:O	1:B:327:MET:HE2	2.20	0.40
1:B:418:THR:HG22	1:B:446:CYS:SG	2.62	0.40
1:B:429:LEU:HA	1:B:432:GLU:HB2	2.02	0.40
1:B:467:GLN:C	1:B:467:GLN:CD	2.90	0.40
1:B:614:ILE:HG23	1:B:912:ASP:HB3	2.02	0.40
2:C:57:LEU:HD23	2:C:57:LEU:HA	1.87	0.40
2:C:128:THR:HG21	2:C:248:HIS:CD2	2.56	0.40
3:E:33:DT:H6	3:E:33:DT:H2'	1.77	0.40
1:A:933:THR:HG22	1:A:935:GLU:N	2.36	0.40
1:B:826:LEU:HD22	1:B:851:VAL:HG11	2.04	0.40
2:C:258:HIS:NE2	2:C:315:GLY:HA2	2.37	0.40
2:D:27:LEU:HD13	2:D:40:LEU:HD11	2.04	0.40
1:A:508:ARG:HE	1:A:533:LEU:HD23	1.85	0.40

Continued on next page...

Continued from previous page...

Atom-1	Atom-2	Interatomic distance (Å)	Clash overlap (Å)
1:A:561:ASP:O	1:A:565:ILE:HG13	2.22	0.40
1:B:930:ALA:HB2	1:B:940:VAL:HB	2.04	0.40
2:C:322:PRO:O	2:C:324:THR:HG23	2.22	0.40
2:C:440:ARG:HA	2:C:440:ARG:NE	2.36	0.40
3:E:29:DC:H6	3:E:29:DC:H2'	1.64	0.40
2:D:360:LYS:O	2:D:364:VAL:HB	2.21	0.40

There are no symmetry-related clashes.

5.3 Torsion angles [i](#)

5.3.1 Protein backbone [i](#)

In the following table, the Percentiles column shows the percent Ramachandran outliers of the chain as a percentile score with respect to all PDB entries followed by that with respect to all EM entries.

The Analysed column shows the number of residues for which the backbone conformation was analysed, and the total number of residues.

Mol	Chain	Analysed	Favoured	Allowed	Outliers	Percentiles	
1	A	902/993 (91%)	823 (91%)	79 (9%)	0	100	100
1	B	905/993 (91%)	850 (94%)	55 (6%)	0	100	100
2	C	587/720 (82%)	573 (98%)	14 (2%)	0	100	100
2	D	589/720 (82%)	558 (95%)	30 (5%)	1 (0%)	44	72
All	All	2983/3426 (87%)	2804 (94%)	178 (6%)	1 (0%)	100	100

All (1) Ramachandran outliers are listed below:

Mol	Chain	Res	Type
2	D	94	SER

5.3.2 Protein sidechains [i](#)

In the following table, the Percentiles column shows the percent sidechain outliers of the chain as a percentile score with respect to all PDB entries followed by that with respect to all EM entries.

The Analysed column shows the number of residues for which the sidechain conformation was

analysed, and the total number of residues.

Mol	Chain	Analysed	Rotameric	Outliers	Percentiles	
1	A	753/815 (92%)	753 (100%)	0	100	100
1	B	753/815 (92%)	751 (100%)	2 (0%)	91	94
2	C	503/602 (84%)	503 (100%)	0	100	100
2	D	505/602 (84%)	505 (100%)	0	100	100
All	All	2514/2834 (89%)	2512 (100%)	2 (0%)	92	96

All (2) residues with a non-rotameric sidechain are listed below:

Mol	Chain	Res	Type
1	B	248	GLU
1	B	514	GLN

Sometimes sidechains can be flipped to improve hydrogen bonding and reduce clashes. All (33) such sidechains are listed below:

Mol	Chain	Res	Type
1	A	51	GLN
1	A	88	GLN
1	A	92	ASN
1	A	309	GLN
1	A	388	GLN
1	A	535	GLN
1	A	553	ASN
1	A	560	HIS
1	A	626	GLN
1	A	677	ASN
1	A	686	HIS
1	A	703	GLN
1	A	713	ASN
1	A	889	ASN
1	B	139	GLN
1	B	227	ASN
1	B	249	GLN
1	B	458	ASN
1	B	514	GLN
1	B	560	HIS
1	B	792	HIS
1	B	849	GLN
2	C	58	GLN
2	C	312	HIS

Continued on next page...

Continued from previous page...

Mol	Chain	Res	Type
2	C	360	ASN
2	C	491	GLN
2	C	582	ASN
2	D	69	ASN
2	D	100	GLN
2	D	187	ASN
2	D	250	HIS
2	D	362	ASN
2	D	390	GLN

5.3.3 RNA [i](#)

There are no RNA molecules in this entry.

5.4 Non-standard residues in protein, DNA, RNA chains [i](#)

There are no non-standard protein/DNA/RNA residues in this entry.

5.5 Carbohydrates [i](#)

There are no oligosaccharides in this entry.

5.6 Ligand geometry [i](#)

Of 4 ligands modelled in this entry, 4 are monoatomic - leaving 0 for Mogul analysis.

There are no bond length outliers.

There are no bond angle outliers.

There are no chirality outliers.

There are no torsion outliers.

There are no ring outliers.

No monomer is involved in short contacts.

5.7 Other polymers [i](#)

There are no such residues in this entry.

5.8 Polymer linkage issues ⓘ

There are no chain breaks in this entry.

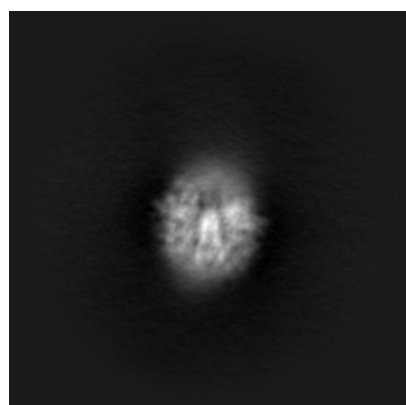
6 Map visualisation [i](#)

This section contains visualisations of the EMDB entry EMD-51173. These allow visual inspection of the internal detail of the map and identification of artifacts.

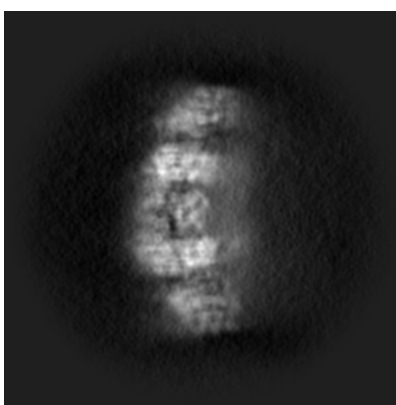
No raw map or half-maps were deposited for this entry and therefore no images, graphs, etc. pertaining to the raw map can be shown.

6.1 Orthogonal projections [i](#)

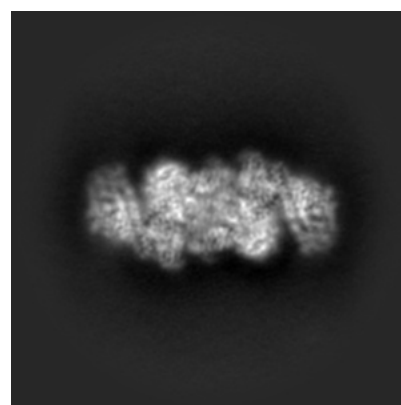
6.1.1 Primary map



X



Y

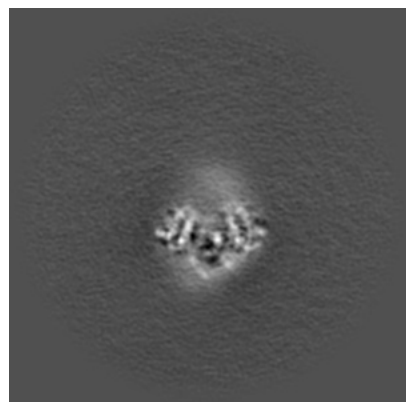


Z

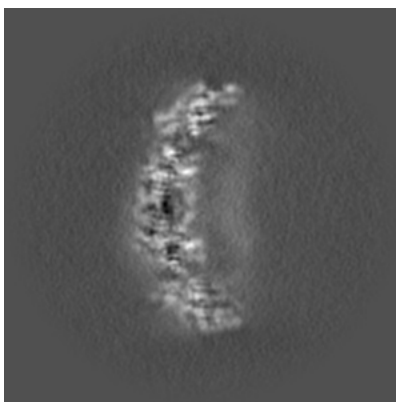
The images above show the map projected in three orthogonal directions.

6.2 Central slices [i](#)

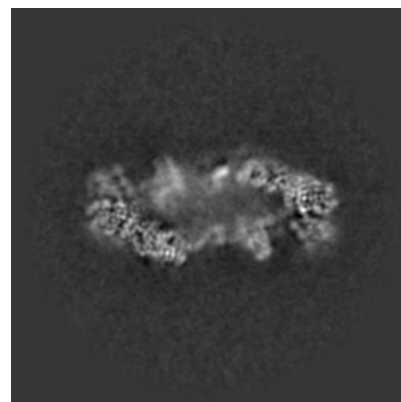
6.2.1 Primary map



X Index: 200



Y Index: 200

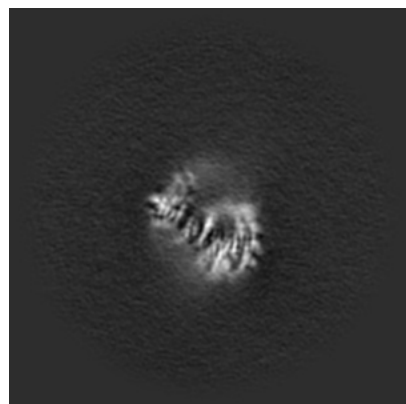


Z Index: 200

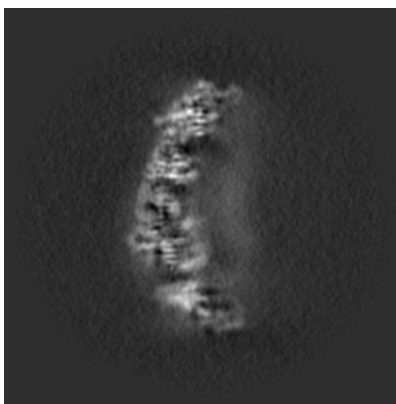
The images above show central slices of the map in three orthogonal directions.

6.3 Largest variance slices [i](#)

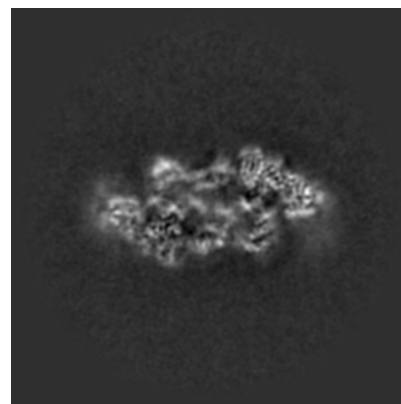
6.3.1 Primary map



X Index: 161



Y Index: 206

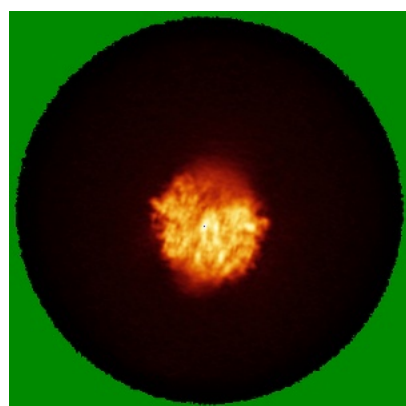


Z Index: 184

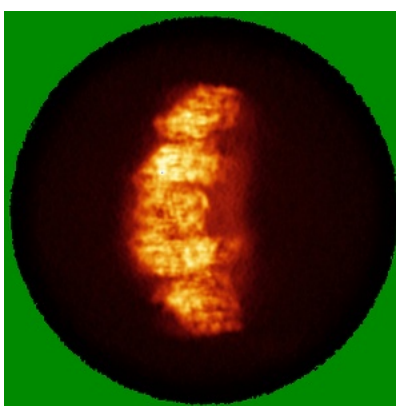
The images above show the largest variance slices of the map in three orthogonal directions.

6.4 Orthogonal standard-deviation projections (False-color) [i](#)

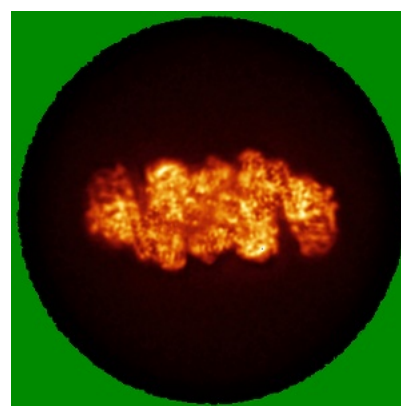
6.4.1 Primary map



X



Y



Z

The images above show the map standard deviation projections with false color in three orthogonal directions. Minimum values are shown in green, max in blue, and dark to light orange shades represent small to large values respectively.

6.5 Orthogonal surface views [i](#)

6.5.1 Primary map



The images above show the 3D surface view of the map at the recommended contour level 0.22. These images, in conjunction with the slice images, may facilitate assessment of whether an appropriate contour level has been provided.

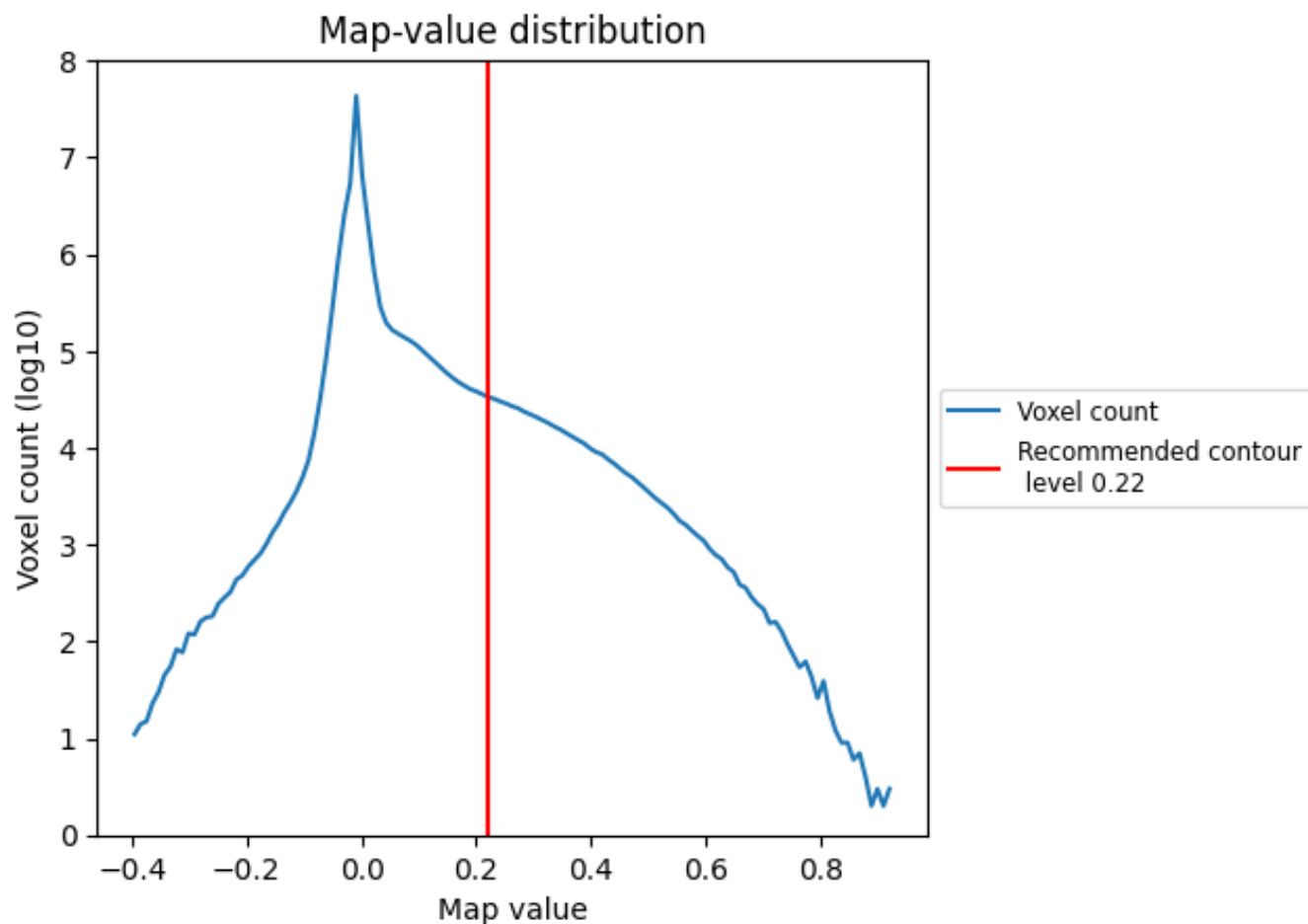
6.6 Mask visualisation [i](#)

This section was not generated. No masks/segmentation were deposited.

7 Map analysis [i](#)

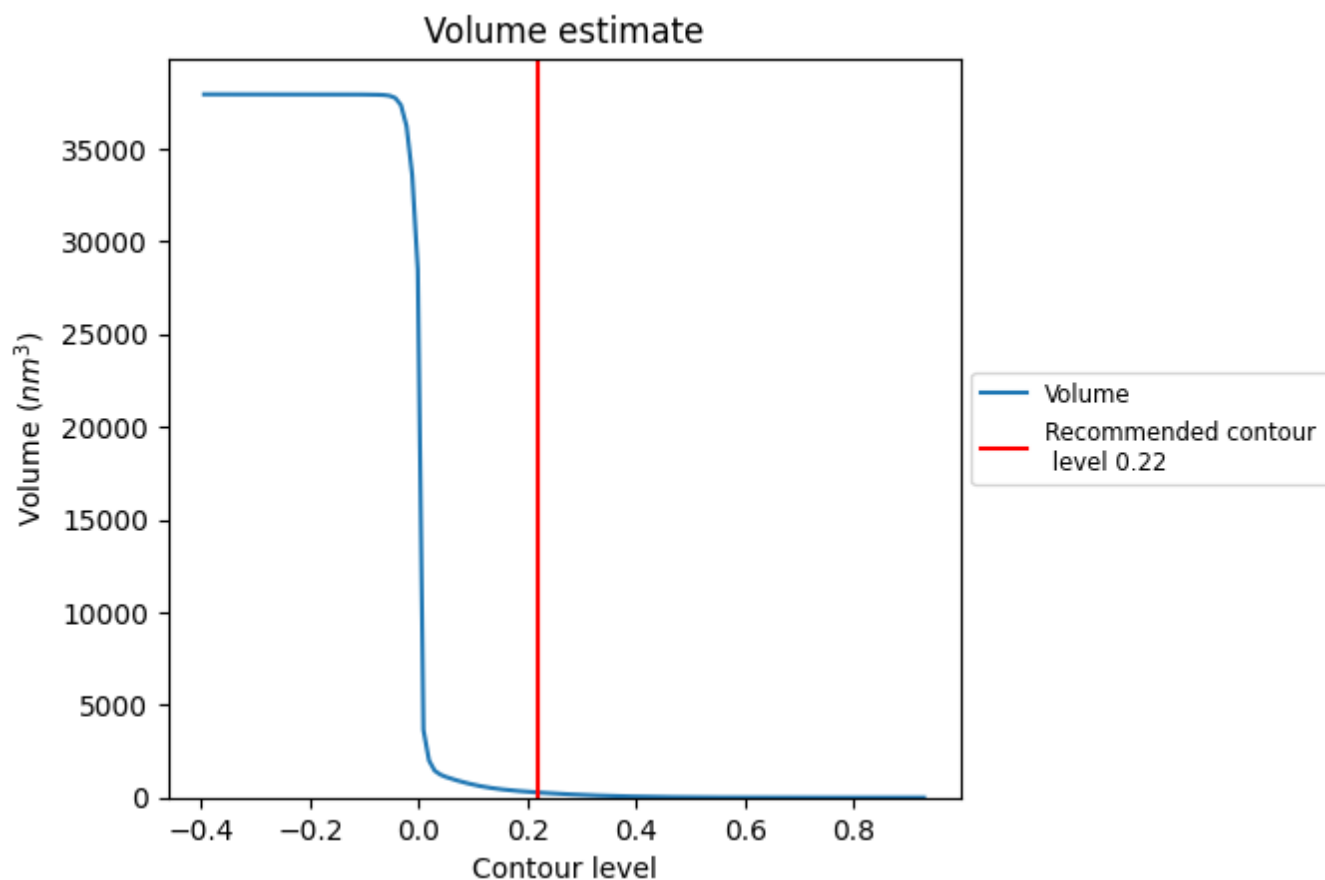
This section contains the results of statistical analysis of the map.

7.1 Map-value distribution [i](#)



The map-value distribution is plotted in 128 intervals along the x-axis. The y-axis is logarithmic. A spike in this graph at zero usually indicates that the volume has been masked.

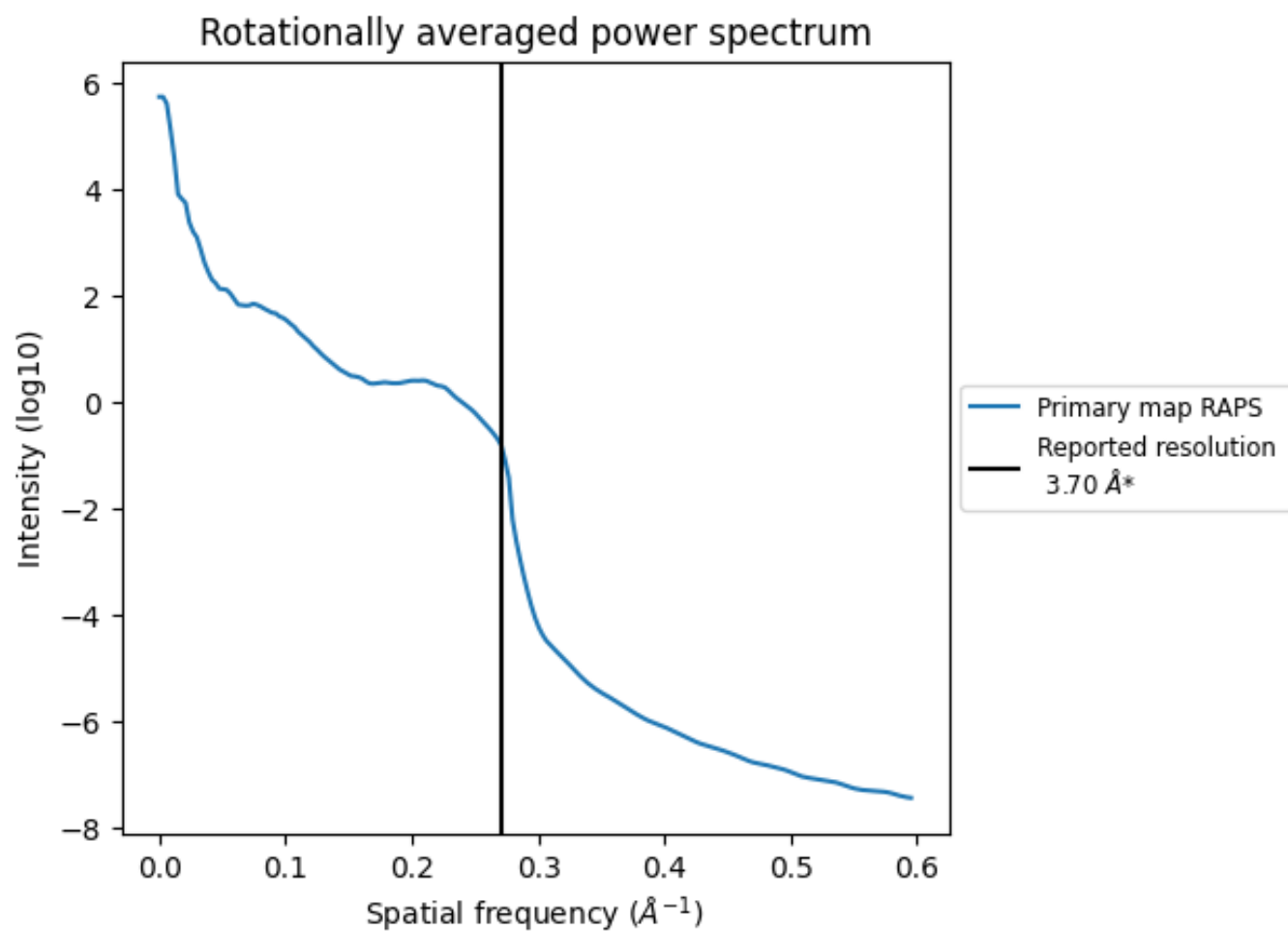
7.2 Volume estimate [i](#)



The volume at the recommended contour level is 273 nm³; this corresponds to an approximate mass of 247 kDa.

The volume estimate graph shows how the enclosed volume varies with the contour level. The recommended contour level is shown as a vertical line and the intersection between the line and the curve gives the volume of the enclosed surface at the given level.

7.3 Rotationally averaged power spectrum ⓘ



*Reported resolution corresponds to spatial frequency of 0.270 Å⁻¹

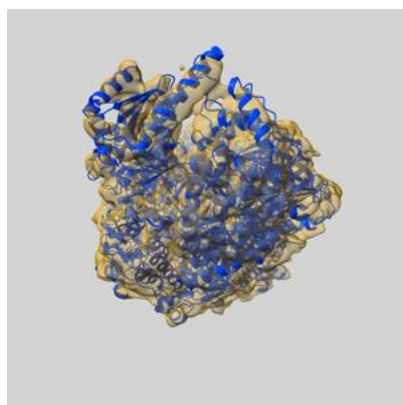
8 Fourier-Shell correlation ⓘ

This section was not generated. No FSC curve or half-maps provided.

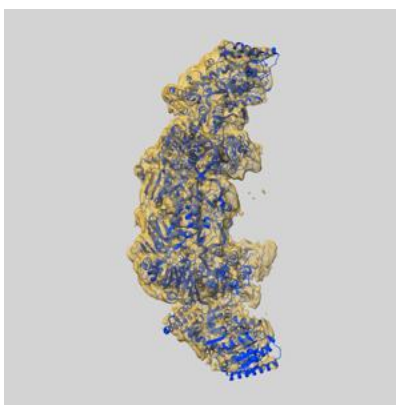
9 Map-model fit [i](#)

This section contains information regarding the fit between EMDB map EMD-51173 and PDB model 9GA4. Per-residue inclusion information can be found in section 3 on page 7.

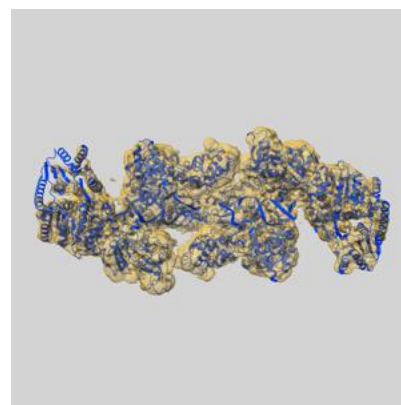
9.1 Map-model overlay [i](#)



X



Y



Z

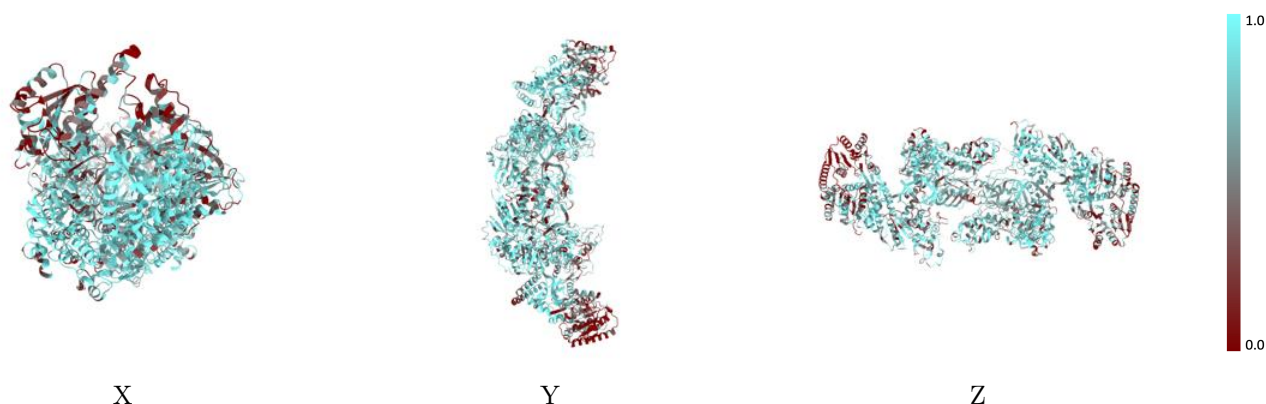
The images above show the 3D surface view of the map at the recommended contour level 0.22 at 50% transparency in yellow overlaid with a ribbon representation of the model coloured in blue. These images allow for the visual assessment of the quality of fit between the atomic model and the map.

9.2 Q-score mapped to coordinate model [i](#)



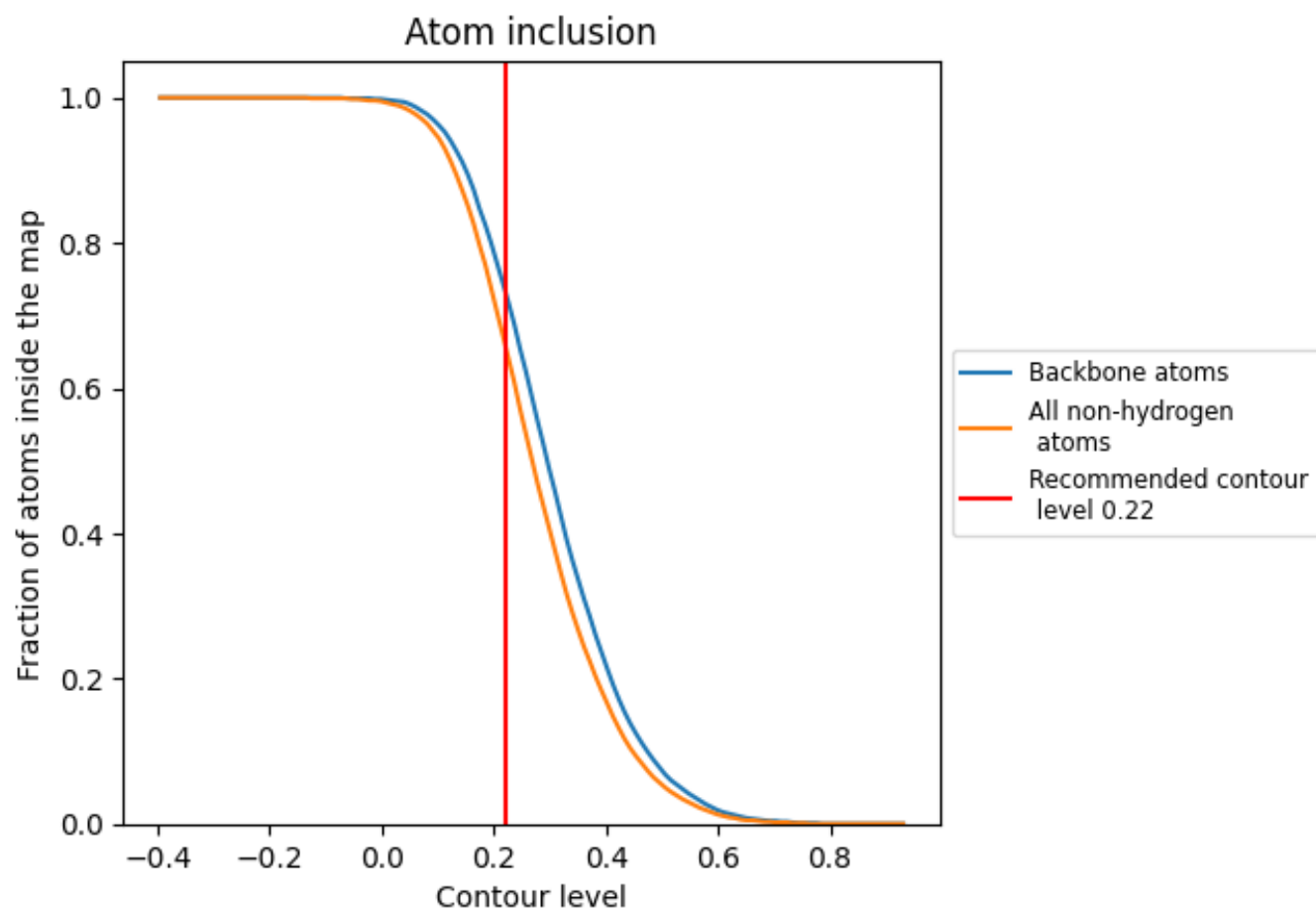
The images above show the model with each residue coloured according to its Q-score. This shows their resolvability in the map with higher Q-score values reflecting better resolvability. Please note: Q-score is calculating the resolvability of atoms, and thus high values are only expected at resolutions at which atoms can be resolved. Low Q-score values may therefore be expected for many entries.

9.3 Atom inclusion mapped to coordinate model [i](#)



The images above show the model with each residue coloured according to its atom inclusion. This shows to what extent they are inside the map at the recommended contour level (0.22).

9.4 Atom inclusion [i](#)



At the recommended contour level, 74% of all backbone atoms, 66% of all non-hydrogen atoms, are inside the map.

9.5 Map-model fit summary ⓘ

The table lists the average atom inclusion at the recommended contour level (0.22) and Q-score for the entire model and for each chain.

Chain	Atom inclusion	Q-score
All	<div></div> 0.6610	<div></div> 0.1800
A	<div></div> 0.6970	<div></div> 0.1820
B	<div></div> 0.7320	<div></div> 0.1680
C	<div></div> 0.5290	<div></div> 0.1990
D	<div></div> 0.6230	<div></div> 0.1840
E	<div></div> 0.6590	<div></div> 0.1440
F	<div></div> 0.7170	<div></div> 0.1580

