



# Full wwPDB X-ray Structure Validation Report ⓘ

May 3, 2025 – 11:00 AM EDT

PDB ID : 3G5D / pdb\_00003g5d  
Title : Kinase domain of cSrc in complex with Dasatinib  
Authors : Grutter, C.; Kluter, S.; Rauh, D.  
Deposited on : 2009-02-05  
Resolution : 2.20 Å(reported)

This is a Full wwPDB X-ray Structure Validation Report for a publicly released PDB entry.

We welcome your comments at [validation@mail.wwpdb.org](mailto:validation@mail.wwpdb.org)

A user guide is available at

<https://www.wwpdb.org/validation/2017/XrayValidationReportHelp>

with specific help available everywhere you see the ⓘ symbol.

The types of validation reports are described at

<http://www.wwpdb.org/validation/2017/FAQs#types>.

---

The following versions of software and data (see [references ⓘ](#)) were used in the production of this report:

MolProbity : 4-5-2 with Phenix2.0rc1  
Mogul : 2022.3.0, CSD as543be (2022)  
Xtriage (Phenix) : 2.0rc1  
EDS : 3.0  
buster-report : 1.1.7 (2018)  
Percentile statistics : 20231227.v01 (using entries in the PDB archive December 27th 2023)  
CCP4 : 9.0.006 (Gargrove)  
Density-Fitness : 1.0.12  
Ideal geometry (proteins) : Engh & Huber (2001)  
Ideal geometry (DNA, RNA) : Parkinson et al. (1996)  
Validation Pipeline (wwPDB-VP) : 2.43.1

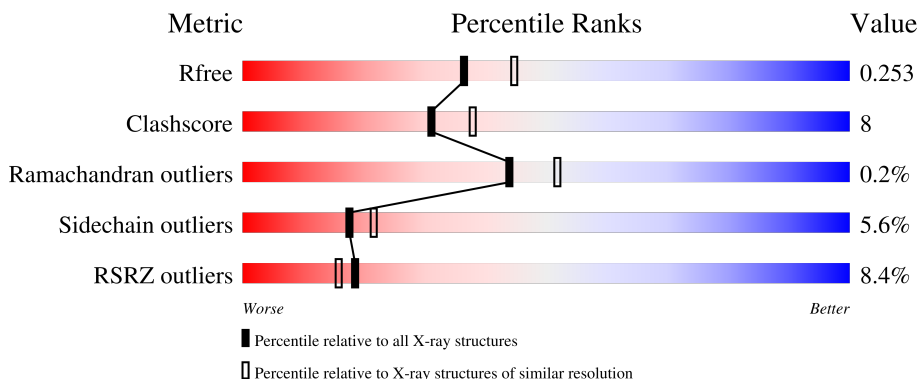
# 1 Overall quality at a glance

The following experimental techniques were used to determine the structure:

*X-RAY DIFFRACTION*

The reported resolution of this entry is 2.20 Å.

Percentile scores (ranging between 0-100) for global validation metrics of the entry are shown in the following graphic. The table shows the number of entries on which the scores are based.



Metric	Whole archive (#Entries)	Similar resolution (#Entries, resolution range(Å))
$R_{free}$	164625	5791 (2.20-2.20)
Clashscore	180529	6634 (2.20-2.20)
Ramachandran outliers	177936	6560 (2.20-2.20)
Sidechain outliers	177891	6561 (2.20-2.20)
RSRZ outliers	164620	5791 (2.20-2.20)

The table below summarises the geometric issues observed across the polymeric chains and their fit to the electron density. The red, orange, yellow and green segments of the lower bar indicate the fraction of residues that contain outliers for  $\geq 3$ , 2, 1 and 0 types of geometric quality criteria respectively. A grey segment represents the fraction of residues that are not modelled. The numeric value for each fraction is indicated below the corresponding segment, with a dot representing fractions  $\leq 5\%$ . The upper red bar (where present) indicates the fraction of residues that have poor fit to the electron density. The numeric value is given above the bar.

Mol	Chain	Length	Quality of chain
1	A	286	<div> <div>9%</div> <div>71%</div> <div>16%</div> <div>•</div> <div>10%</div> </div>
1	B	286	<div> <div>6%</div> <div>71%</div> <div>17%</div> <div>•</div> <div>10%</div> </div>

## 2 Entry composition

There are 4 unique types of molecules in this entry. The entry contains 4441 atoms, of which 0 are hydrogens and 0 are deuteriums.

In the tables below, the ZeroOcc column contains the number of atoms modelled with zero occupancy, the AltConf column contains the number of residues with at least one atom in alternate conformation and the Trace column contains the number of residues modelled with at most 2 atoms.

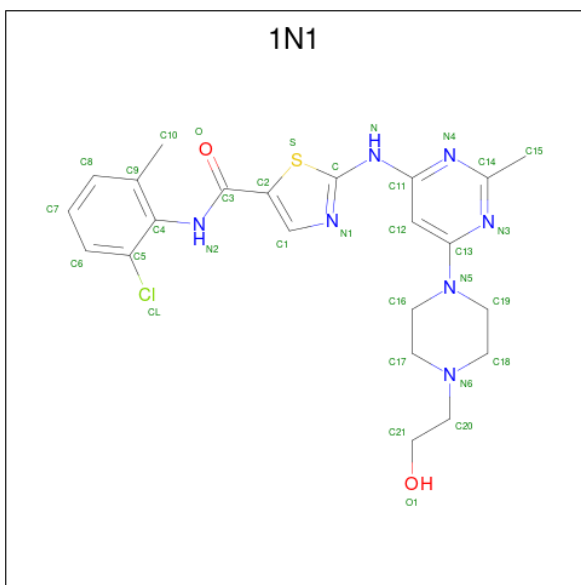
- Molecule 1 is a protein called Proto-oncogene tyrosine-protein kinase Src.

Mol	Chain	Residues	Atoms					ZeroOcc	AltConf	Trace
1	A	256	Total	C	N	O	S	0	0	0
			2065	1327	344	378	16			
1	B	257	Total	C	N	O	S	0	0	0
			2073	1332	345	379	17			

There are 8 discrepancies between the modelled and reference sequences:

Chain	Residue	Modelled	Actual	Comment	Reference
A	248	GLY	-	expression tag	UNP P00523
A	249	HIS	-	expression tag	UNP P00523
A	250	MET	-	expression tag	UNP P00523
A	345	CYS	SER	engineered mutation	UNP P00523
B	248	GLY	-	expression tag	UNP P00523
B	249	HIS	-	expression tag	UNP P00523
B	250	MET	-	expression tag	UNP P00523
B	345	CYS	SER	engineered mutation	UNP P00523

- Molecule 2 is N-(2-CHLORO-6-METHYLPHENYL)-2-({6-[4-(2-HYDROXYETHYL)PIPERAZIN-1-YL]-2-METHYLPYRIMIDIN-4-YL}AMINO)-1,3-THIAZOLE-5-CARBOXAMIDE (CCD ID: 1N1) (formula: C<sub>22</sub>H<sub>26</sub>ClN<sub>7</sub>O<sub>2</sub>S).



Mol	Chain	Residues	Atoms						ZeroOcc	AltConf
2	A	1	Total	C	Cl	N	O	S	0	0
			33	22	1	7	2	1		
2	B	1	Total	C	Cl	N	O	S	0	0
			33	22	1	7	2	1		

- Molecule 3 is GLYCEROL (CCD ID: GOL) (formula:  $C_3H_8O_3$ ).



Mol	Chain	Residues	Atoms			ZeroOcc	AltConf
3	A	1	Total	C	O	0	0
			6	3	3		
3	B	1	Total	C	O	0	0
			6	3	3		

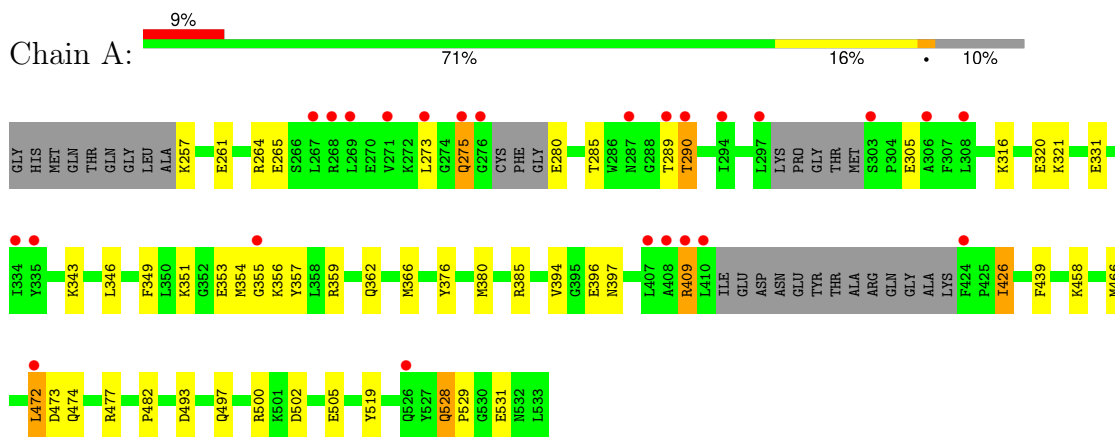
- Molecule 4 is water.

Mol	Chain	Residues	Atoms		ZeroOcc	AltConf
4	A	114	Total 114	O 114	0	0
4	B	111	Total 111	O 111	0	0

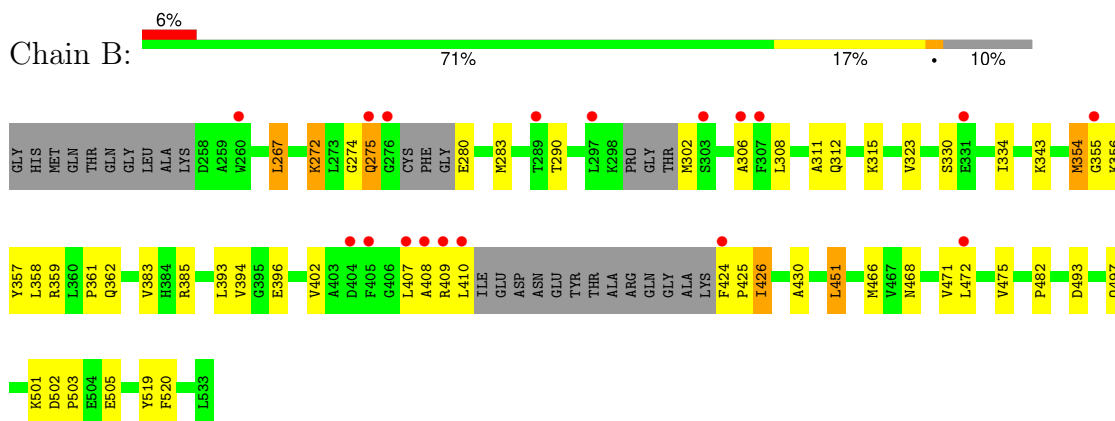
### 3 Residue-property plots [i](#)

These plots are drawn for all protein, RNA, DNA and oligosaccharide chains in the entry. The first graphic for a chain summarises the proportions of the various outlier classes displayed in the second graphic. The second graphic shows the sequence view annotated by issues in geometry and electron density. Residues are color-coded according to the number of geometric quality criteria for which they contain at least one outlier: green = 0, yellow = 1, orange = 2 and red = 3 or more. A red dot above a residue indicates a poor fit to the electron density ( $RSRZ > 2$ ). Stretches of 2 or more consecutive residues without any outlier are shown as a green connector. Residues present in the sample, but not in the model, are shown in grey.

- Molecule 1: Proto-oncogene tyrosine-protein kinase Src



- Molecule 1: Proto-oncogene tyrosine-protein kinase Src



## 4 Data and refinement statistics

Property	Value	Source
Space group	P 1	Depositor
Cell constants a, b, c, $\alpha$ , $\beta$ , $\gamma$	42.19Å 63.69Å 74.58Å 78.71° 89.96° 90.28°	Depositor
Resolution (Å)	35.05 – 2.20 35.05 – 2.20	Depositor EDS
% Data completeness (in resolution range)	100.0 (35.05-2.20) 96.9 (35.05-2.20)	Depositor EDS
$R_{merge}$	0.05	Depositor
$R_{sym}$	(Not available)	Depositor
$\langle I/\sigma(I) \rangle$ <sup>1</sup>	6.84 (at 2.20Å)	Xtriage
Refinement program	REFMAC	Depositor
R, $R_{free}$	0.206 , 0.257 0.204 , 0.253	Depositor DCC
$R_{free}$ test set	936 reflections (2.50%)	wwPDB-VP
Wilson B-factor (Å <sup>2</sup> )	28.3	Xtriage
Anisotropy	0.216	Xtriage
Bulk solvent $k_{sol}$ (e/Å <sup>3</sup> ), $B_{sol}$ (Å <sup>2</sup> )	0.39 , 50.8	EDS
L-test for twinning <sup>2</sup>	$\langle  L  \rangle = 0.48$ , $\langle L^2 \rangle = 0.30$	Xtriage
Estimated twinning fraction	0.034 for h,-k,-l	Xtriage
$F_o, F_c$ correlation	0.92	EDS
Total number of atoms	4441	wwPDB-VP
Average B, all atoms (Å <sup>2</sup> )	30.0	wwPDB-VP

Xtriage's analysis on translational NCS is as follows: *The largest off-origin peak in the Patterson function is 7.04% of the height of the origin peak. No significant pseudotranslation is detected.*

<sup>1</sup>Intensities estimated from amplitudes.

<sup>2</sup>Theoretical values of  $\langle |L| \rangle$ ,  $\langle L^2 \rangle$  for acentric reflections are 0.5, 0.333 respectively for untwinned datasets, and 0.375, 0.2 for perfectly twinned datasets.

## 5 Model quality ⓘ

### 5.1 Standard geometry ⓘ

Bond lengths and bond angles in the following residue types are not validated in this section: 1N1, GOL

The Z score for a bond length (or angle) is the number of standard deviations the observed value is removed from the expected value. A bond length (or angle) with  $|Z| > 5$  is considered an outlier worth inspection. RMSZ is the root-mean-square of all Z scores of the bond lengths (or angles).

Mol	Chain	Bond lengths		Bond angles	
		RMSZ	$\# Z  > 5$	RMSZ	$\# Z  > 5$
1	A	0.90	0/2113	1.01	1/2859 (0.0%)
1	B	0.91	1/2121 (0.0%)	1.01	4/2869 (0.1%)
All	All	0.91	1/4234 (0.0%)	1.01	5/5728 (0.1%)

All (1) bond length outliers are listed below:

Mol	Chain	Res	Type	Atoms	Z	Observed(Å)	Ideal(Å)
1	B	402	VAL	CA-CB	5.30	1.60	1.54

All (5) bond angle outliers are listed below:

Mol	Chain	Res	Type	Atoms	Z	Observed(°)	Ideal(°)
1	A	519	TYR	N-CA-C	5.70	117.95	111.11
1	B	519	TYR	N-CA-C	5.54	117.32	111.28
1	B	354	MET	N-CA-C	5.50	117.36	111.36
1	B	430	ALA	CA-C-N	5.30	125.37	119.32
1	B	430	ALA	C-N-CA	5.30	125.37	119.32

There are no chirality outliers.

There are no planarity outliers.

### 5.2 Too-close contacts ⓘ

In the following table, the Non-H and H(model) columns list the number of non-hydrogen atoms and hydrogen atoms in the chain respectively. The H(added) column lists the number of hydrogen atoms added and optimized by MolProbity. The Clashes column lists the number of clashes within the asymmetric unit, whereas Symm-Clashes lists symmetry-related clashes.

Mol	Chain	Non-H	H(model)	H(added)	Clashes	Symm-Clashes
1	A	2065	0	2049	31	0
1	B	2073	0	2058	33	0
2	A	33	0	26	2	0
2	B	33	0	26	2	0
3	A	6	0	8	0	0
3	B	6	0	8	0	0
4	A	114	0	0	4	0
4	B	111	0	0	3	0
All	All	4441	0	4175	68	0

The all-atom clashscore is defined as the number of clashes found per 1000 atoms (including hydrogen atoms). The all-atom clashscore for this structure is 8.

All (68) close contacts within the same asymmetric unit are listed below, sorted by their clash magnitude.

Atom-1	Atom-2	Interatomic distance (Å)	Clash overlap (Å)
1:B:272:LYS:HD3	1:B:275:GLN:HE22	1.23	1.02
2:B:1:1N1:S	2:B:1:1N1:N4	2.51	0.83
1:B:359:ARG:H	1:B:362:GLN:HE21	1.29	0.78
1:A:359:ARG:H	1:A:362:GLN:HE21	1.36	0.74
1:A:359:ARG:H	1:A:362:GLN:NE2	1.90	0.70
1:A:458:LYS:HG2	4:A:120:HOH:O	1.93	0.67
1:A:500:ARG:HD3	1:A:505:GLU:HB3	1.77	0.67
1:B:359:ARG:H	1:B:362:GLN:NE2	1.93	0.66
1:B:468:ASN:O	1:B:472:LEU:HD13	1.96	0.66
2:A:1:1N1:N4	2:A:1:1N1:S	2.69	0.66
1:B:424:PHE:HB2	4:B:124:HOH:O	1.95	0.65
1:B:272:LYS:HD3	1:B:275:GLN:NE2	2.04	0.64
1:A:409:ARG:HH12	1:A:439:PHE:HB2	1.66	0.60
1:B:311:ALA:O	1:B:315:LYS:HG3	2.00	0.60
1:B:407:LEU:HD13	1:B:424:PHE:CE2	2.37	0.60
1:A:376:TYR:CE1	1:A:380:MET:HE3	2.39	0.58
1:A:264:ARG:NH2	1:A:331:GLU:O	2.38	0.57
1:B:356:LYS:HE2	1:B:357:TYR:CZ	2.40	0.56
1:A:356:LYS:HE3	1:A:357:TYR:CZ	2.40	0.56
1:A:493:ASP:O	1:A:497:GLN:HG3	2.05	0.56
1:A:355:GLY:HA3	4:A:78:HOH:O	2.04	0.56
1:B:354:MET:HB2	4:B:162:HOH:O	2.05	0.56
1:A:257:LYS:HD3	1:A:261:GLU:HG2	1.89	0.55
1:B:407:LEU:HD13	1:B:424:PHE:HE2	1.72	0.54
1:A:385:ARG:HD3	1:A:409:ARG:NH1	2.23	0.53
1:A:359:ARG:HB2	1:A:362:GLN:HE22	1.72	0.53

*Continued on next page...*

*Continued from previous page...*

Atom-1	Atom-2	Interatomic distance (Å)	Clash overlap (Å)
1:A:320:GLU:HG3	1:A:321:LYS:HG2	1.91	0.52
1:B:493:ASP:OD2	1:B:497:GLN:NE2	2.45	0.49
1:A:473:ASP:O	1:A:477:ARG:HG3	2.13	0.48
1:A:482:PRO:HD2	4:A:240:HOH:O	2.12	0.48
1:B:451:LEU:HD12	1:B:451:LEU:O	2.14	0.48
1:B:308:LEU:HG	1:B:334:ILE:HD13	1.94	0.47
1:A:285:THR:HA	1:A:290:THR:O	2.13	0.47
1:B:359:ARG:HB2	1:B:362:GLN:HE22	1.78	0.47
1:B:385:ARG:HD3	1:B:407:LEU:O	2.13	0.47
1:B:267:LEU:H	1:B:267:LEU:HD23	1.78	0.47
1:A:275:GLN:HA	1:A:280:GLU:HG2	1.96	0.46
1:B:272:LYS:CD	1:B:275:GLN:HE22	2.12	0.46
1:B:302:MET:HG3	1:B:306:ALA:HB3	1.96	0.46
1:A:502:ASP:HB3	1:A:505:GLU:HG3	1.97	0.45
1:B:426:ILE:HG12	1:B:472:LEU:CD1	2.46	0.45
1:B:482:PRO:HD2	4:B:104:HOH:O	2.16	0.45
1:A:426:ILE:HD13	1:A:426:ILE:O	2.16	0.45
1:B:343:LYS:HB2	1:B:394:VAL:HB	1.99	0.45
1:B:343:LYS:HE2	1:B:396:GLU:OE1	2.17	0.45
1:B:383:VAL:O	1:B:408:ALA:HA	2.18	0.44
1:B:361:PRO:HA	1:B:520:PHE:CE1	2.53	0.43
1:A:289:THR:HG22	1:A:289:THR:O	2.18	0.43
1:B:274:GLY:O	1:B:280:GLU:HA	2.19	0.43
1:A:343:LYS:HB2	1:A:394:VAL:HB	2.00	0.43
1:A:497:GLN:NE2	4:A:224:HOH:O	2.44	0.43
1:B:409:ARG:O	1:B:410:LEU:CB	2.67	0.42
1:A:349:PHE:CE1	1:A:354:MET:HG3	2.54	0.42
1:A:458:LYS:HB3	1:A:458:LYS:HE2	1.72	0.42
1:B:323:VAL:HG21	1:B:393:LEU:HD12	2.02	0.42
1:A:346:LEU:HD13	1:A:366:MET:HE2	2.01	0.42
1:A:396:GLU:O	1:A:397:ASN:HB3	2.19	0.41
1:B:355:GLY:HA2	1:B:358:LEU:HD12	2.02	0.41
2:A:1:1N1:H212	2:A:1:1N1:H181	1.73	0.41
1:B:466:MET:HE2	1:B:471:VAL:HG22	2.02	0.41
1:A:275:GLN:HG2	1:A:280:GLU:HG2	2.03	0.41
1:A:466:MET:HE3	1:A:474:GLN:HG3	2.03	0.41
1:B:359:ARG:HA	1:B:359:ARG:HD3	1.68	0.41
1:B:502:ASP:HA	1:B:503:PRO:HD3	1.95	0.41
1:A:426:ILE:HG13	1:A:472:LEU:HD11	2.02	0.41
2:B:1:1N1:H12	2:B:1:1N1:H191	1.80	0.40
1:A:528:GLN:HA	1:A:529:PRO:HD3	1.99	0.40

*Continued on next page...*

*Continued from previous page...*

Atom-1	Atom-2	Interatomic distance (Å)	Clash overlap (Å)
1:B:426:ILE:HG12	1:B:472:LEU:HD12	2.02	0.40

There are no symmetry-related clashes.

## 5.3 Torsion angles [i](#)

### 5.3.1 Protein backbone [i](#)

In the following table, the Percentiles column shows the percent Ramachandran outliers of the chain as a percentile score with respect to all X-ray entries followed by that with respect to entries of similar resolution.

The Analysed column shows the number of residues for which the backbone conformation was analysed, and the total number of residues.

Mol	Chain	Analysed	Favoured	Allowed	Outliers	Percentiles	
1	A	248/286 (87%)	238 (96%)	10 (4%)	0	100	100
1	B	249/286 (87%)	238 (96%)	10 (4%)	1 (0%)	30	34
All	All	497/572 (87%)	476 (96%)	20 (4%)	1 (0%)	44	52

All (1) Ramachandran outliers are listed below:

Mol	Chain	Res	Type
1	B	425	PRO

### 5.3.2 Protein sidechains [i](#)

In the following table, the Percentiles column shows the percent sidechain outliers of the chain as a percentile score with respect to all X-ray entries followed by that with respect to entries of similar resolution.

The Analysed column shows the number of residues for which the sidechain conformation was analysed, and the total number of residues.

Mol	Chain	Analysed	Rotameric	Outliers	Percentiles	
1	A	222/245 (91%)	209 (94%)	13 (6%)	16	20
1	B	223/245 (91%)	211 (95%)	12 (5%)	18	23
All	All	445/490 (91%)	420 (94%)	25 (6%)	17	21

All (25) residues with a non-rotameric sidechain are listed below:

Mol	Chain	Res	Type
1	A	265	GLU
1	A	273	LEU
1	A	275	GLN
1	A	290	THR
1	A	305	GLU
1	A	316	LYS
1	A	351	LYS
1	A	353	GLU
1	A	409	ARG
1	A	426	ILE
1	A	472	LEU
1	A	528	GLN
1	A	531	GLU
1	B	267	LEU
1	B	272	LYS
1	B	275	GLN
1	B	283	MET
1	B	290	THR
1	B	312	GLN
1	B	330	SER
1	B	426	ILE
1	B	451	LEU
1	B	475	VAL
1	B	501	LYS
1	B	505	GLU

Sometimes sidechains can be flipped to improve hydrogen bonding and reduce clashes. All (6) such sidechains are listed below:

Mol	Chain	Res	Type
1	A	324	GLN
1	A	362	GLN
1	B	275	GLN
1	B	362	GLN
1	B	526	GLN
1	B	528	GLN

### 5.3.3 RNA ⓘ

There are no RNA molecules in this entry.

## 5.4 Non-standard residues in protein, DNA, RNA chains [i](#)

There are no non-standard protein/DNA/RNA residues in this entry.

## 5.5 Carbohydrates [i](#)

There are no oligosaccharides in this entry.

## 5.6 Ligand geometry [i](#)

4 ligands are modelled in this entry.

In the following table, the Counts columns list the number of bonds (or angles) for which Mogul statistics could be retrieved, the number of bonds (or angles) that are observed in the model and the number of bonds (or angles) that are defined in the Chemical Component Dictionary. The Link column lists molecule types, if any, to which the group is linked. The Z score for a bond length (or angle) is the number of standard deviations the observed value is removed from the expected value. A bond length (or angle) with  $|Z| > 2$  is considered an outlier worth inspection. RMSZ is the root-mean-square of all Z scores of the bond lengths (or angles).

Mol	Type	Chain	Res	Link	Bond lengths			Bond angles		
					Counts	RMSZ	# $ Z  > 2$	Counts	RMSZ	# $ Z  > 2$
3	GOL	A	534	-	5,5,5	0.36	0	5,5,5	0.39	0
2	1N1	B	1	-	32,36,36	1.33	3 (9%)	42,50,50	1.62	7 (16%)
3	GOL	B	534	-	5,5,5	0.37	0	5,5,5	0.52	0
2	1N1	A	1	-	32,36,36	1.23	3 (9%)	42,50,50	1.77	10 (23%)

In the following table, the Chirals column lists the number of chiral outliers, the number of chiral centers analysed, the number of these observed in the model and the number defined in the Chemical Component Dictionary. Similar counts are reported in the Torsion and Rings columns. '-' means no outliers of that kind were identified.

Mol	Type	Chain	Res	Link	Chirals	Torsions	Rings
3	GOL	A	534	-	-	2/4/4/4	-
2	1N1	B	1	-	-	2/13/29/29	0/4/4/4
3	GOL	B	534	-	-	2/4/4/4	-
2	1N1	A	1	-	-	2/13/29/29	0/4/4/4

All (6) bond length outliers are listed below:

Mol	Chain	Res	Type	Atoms	Z	Observed(Å)	Ideal(Å)
2	B	1	1N1	C4-N2	-5.45	1.33	1.43

*Continued on next page...*

*Continued from previous page...*

Mol	Chain	Res	Type	Atoms	Z	Observed(Å)	Ideal(Å)
2	A	1	1N1	C4-N2	-4.38	1.35	1.43
2	B	1	1N1	C11-N	-2.94	1.33	1.38
2	A	1	1N1	C11-N	-2.62	1.34	1.38
2	B	1	1N1	C1-C2	-2.16	1.34	1.37
2	A	1	1N1	C1-C2	-2.09	1.34	1.37

All (17) bond angle outliers are listed below:

Mol	Chain	Res	Type	Atoms	Z	Observed(°)	Ideal(°)
2	A	1	1N1	C14-N3-C13	5.27	121.86	116.05
2	A	1	1N1	C14-N4-C11	4.82	121.72	115.67
2	B	1	1N1	C14-N3-C13	4.21	120.69	116.05
2	B	1	1N1	C14-N4-C11	4.00	120.69	115.67
2	B	1	1N1	C19-N5-C16	3.75	120.00	111.57
2	A	1	1N1	N4-C14-N3	-3.58	119.44	125.77
2	A	1	1N1	C19-N5-C16	3.22	118.80	111.57
2	B	1	1N1	N3-C13-N5	2.91	120.24	116.56
2	B	1	1N1	N4-C14-N3	-2.78	120.86	125.77
2	A	1	1N1	C2-C1-N1	2.68	114.48	109.09
2	A	1	1N1	C20-N6-C17	-2.64	104.21	111.24
2	B	1	1N1	C2-C1-N1	2.52	114.15	109.09
2	B	1	1N1	C11-C12-C13	2.52	118.66	116.64
2	A	1	1N1	C15-C14-N3	2.14	120.33	117.13
2	A	1	1N1	C12-C13-N3	-2.10	119.30	123.34
2	A	1	1N1	C15-C14-N4	2.07	120.22	117.13
2	A	1	1N1	C18-N6-C17	2.03	113.21	108.84

There are no chirality outliers.

All (8) torsion outliers are listed below:

Mol	Chain	Res	Type	Atoms
2	A	1	1N1	C21-C20-N6-C18
2	B	1	1N1	C21-C20-N6-C18
3	A	534	GOL	O2-C2-C3-O3
3	B	534	GOL	O1-C1-C2-O2
3	B	534	GOL	O1-C1-C2-C3
2	B	1	1N1	N6-C20-C21-O1
2	A	1	1N1	N6-C20-C21-O1
3	A	534	GOL	C1-C2-C3-O3

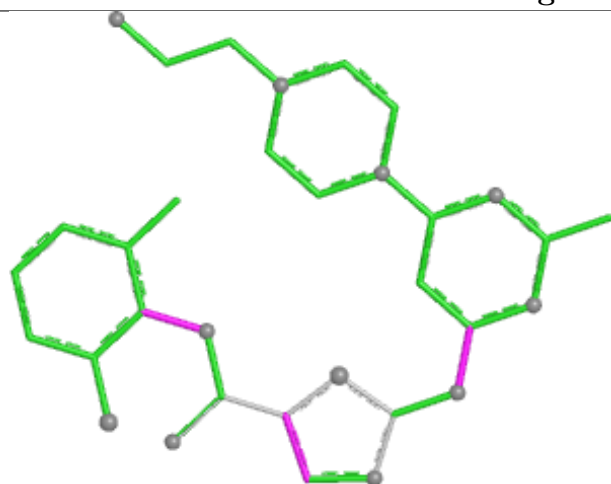
There are no ring outliers.

2 monomers are involved in 4 short contacts:

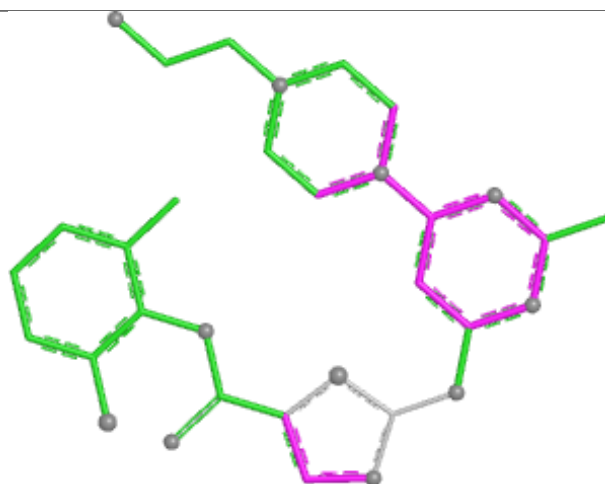
Mol	Chain	Res	Type	Clashes	Symm-Clashes
2	B	1	1N1	2	0
2	A	1	1N1	2	0

The following is a two-dimensional graphical depiction of Mogul quality analysis of bond lengths, bond angles, torsion angles, and ring geometry for all instances of the Ligand of Interest. In addition, ligands with molecular weight > 250 and outliers as shown on the validation Tables will also be included. For torsion angles, if less than 5% of the Mogul distribution of torsion angles is within 10 degrees of the torsion angle in question, then that torsion angle is considered an outlier. Any bond that is central to one or more torsion angles identified as an outlier by Mogul will be highlighted in the graph. For rings, the root-mean-square deviation (RMSD) between the ring in question and similar rings identified by Mogul is calculated over all ring torsion angles. If the average RMSD is greater than 60 degrees and the minimal RMSD between the ring in question and any Mogul-identified rings is also greater than 60 degrees, then that ring is considered an outlier. The outliers are highlighted in purple. The color gray indicates Mogul did not find sufficient equivalents in the CSD to analyse the geometry.

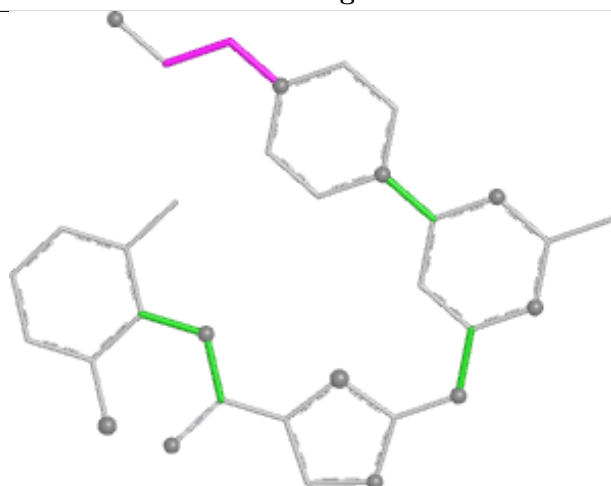
## Ligand 1N1 B 1



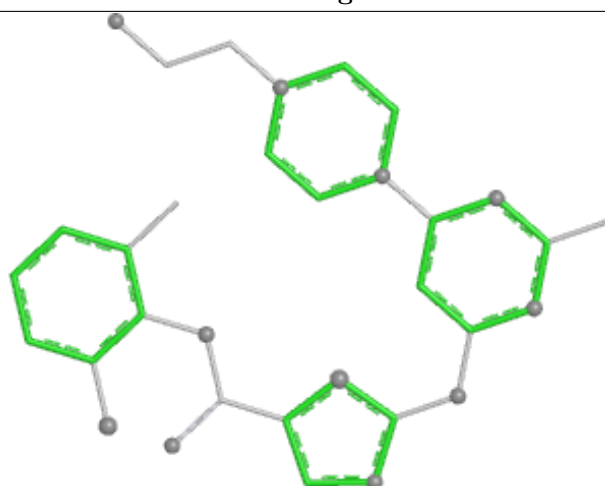
Bond lengths



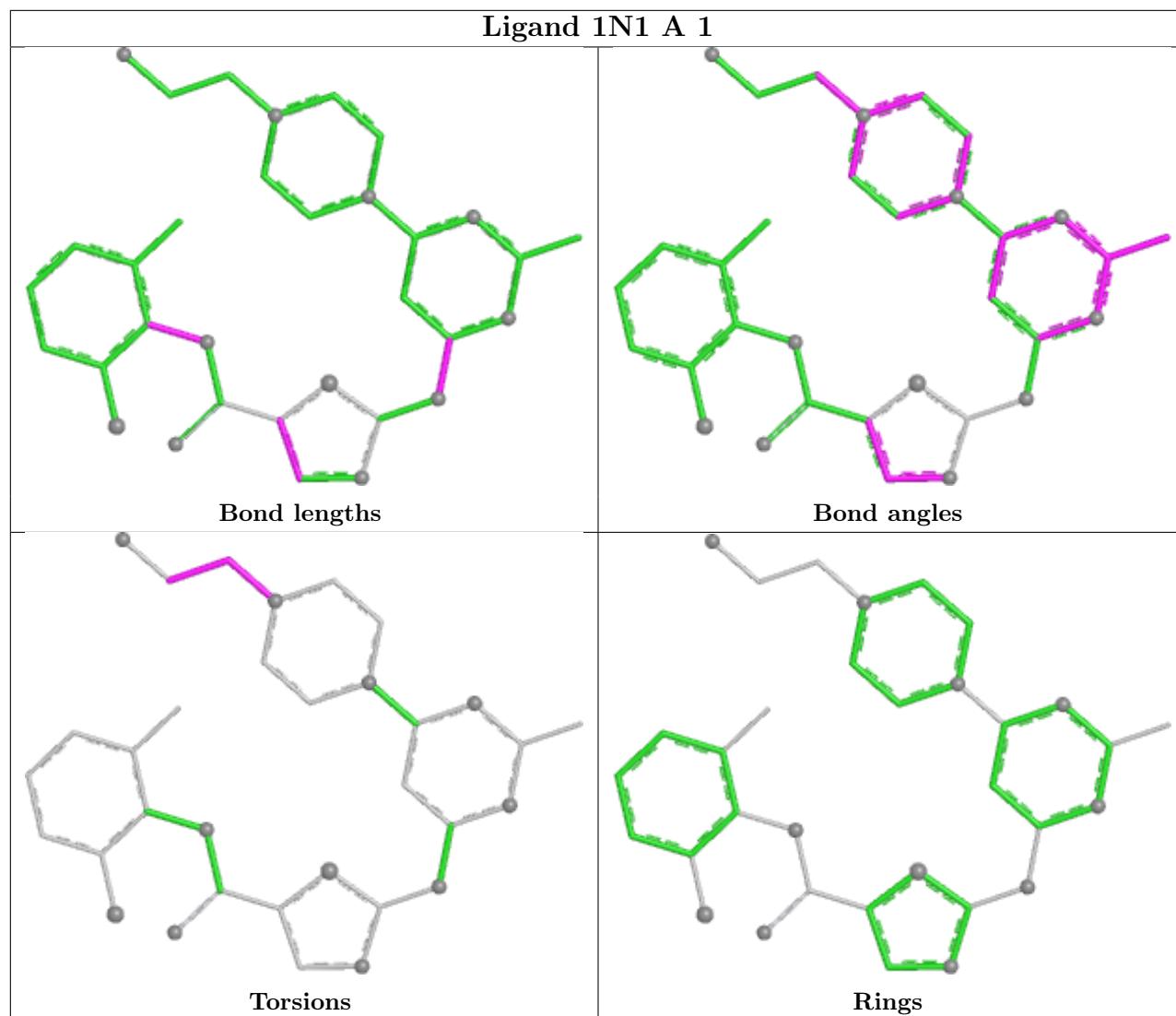
Bond angles



Torsions



Rings



## 5.7 Other polymers [i](#)

There are no such residues in this entry.

## 5.8 Polymer linkage issues [i](#)

There are no chain breaks in this entry.

## 6 Fit of model and data ⓘ

### 6.1 Protein, DNA and RNA chains ⓘ

In the following table, the column labelled ‘#RSRZ > 2’ contains the number (and percentage) of RSRZ outliers, followed by percent RSRZ outliers for the chain as percentile scores relative to all X-ray entries and entries of similar resolution. The OWAB column contains the minimum, median, 95<sup>th</sup> percentile and maximum values of the occupancy-weighted average B-factor per residue. The column labelled ‘Q < 0.9’ lists the number of (and percentage) of residues with an average occupancy less than 0.9.

Mol	Chain	Analysed	<RSRZ>	#RSRZ>2	OWAB(Å <sup>2</sup> )	Q<0.9
1	A	256/286 (89%)	0.45	25 (9%) 14 12	16, 26, 56, 67	0
1	B	257/286 (89%)	0.40	18 (7%) 24 21	17, 26, 57, 72	0
All	All	513/572 (89%)	0.43	43 (8%) 18 16	16, 26, 56, 72	0

All (43) RSRZ outliers are listed below:

Mol	Chain	Res	Type	RSRZ
1	A	306	ALA	5.6
1	B	409	ARG	4.2
1	B	407	LEU	4.0
1	B	410	LEU	4.0
1	B	424	PHE	3.9
1	A	276	GLY	3.7
1	A	268	ARG	3.5
1	A	408	ALA	3.4
1	A	303	SER	3.3
1	B	297	LEU	3.3
1	A	407	LEU	3.2
1	A	410	LEU	3.1
1	A	275	GLN	3.1
1	B	275	GLN	3.0
1	B	276	GLY	2.9
1	A	308	LEU	2.9
1	A	267	LEU	2.8
1	B	408	ALA	2.8
1	A	409	ARG	2.7
1	A	287	ASN	2.7
1	A	424	PHE	2.7
1	A	271	VAL	2.6
1	A	335	TYR	2.6
1	A	334	ILE	2.6

*Continued on next page...*

*Continued from previous page...*

Mol	Chain	Res	Type	RSRZ
1	A	297	LEU	2.5
1	A	290	THR	2.4
1	A	273	LEU	2.4
1	B	303	SER	2.3
1	B	355	GLY	2.3
1	A	289	THR	2.3
1	B	405	PHE	2.3
1	A	355	GLY	2.3
1	B	307	PHE	2.3
1	B	472	LEU	2.2
1	B	289	THR	2.2
1	A	526	GLN	2.2
1	A	269	LEU	2.2
1	A	472	LEU	2.1
1	B	260	TRP	2.1
1	B	306	ALA	2.1
1	A	294	ILE	2.0
1	B	331	GLU	2.0
1	B	404	ASP	2.0

## 6.2 Non-standard residues in protein, DNA, RNA chains [i](#)

There are no non-standard protein/DNA/RNA residues in this entry.

## 6.3 Carbohydrates [i](#)

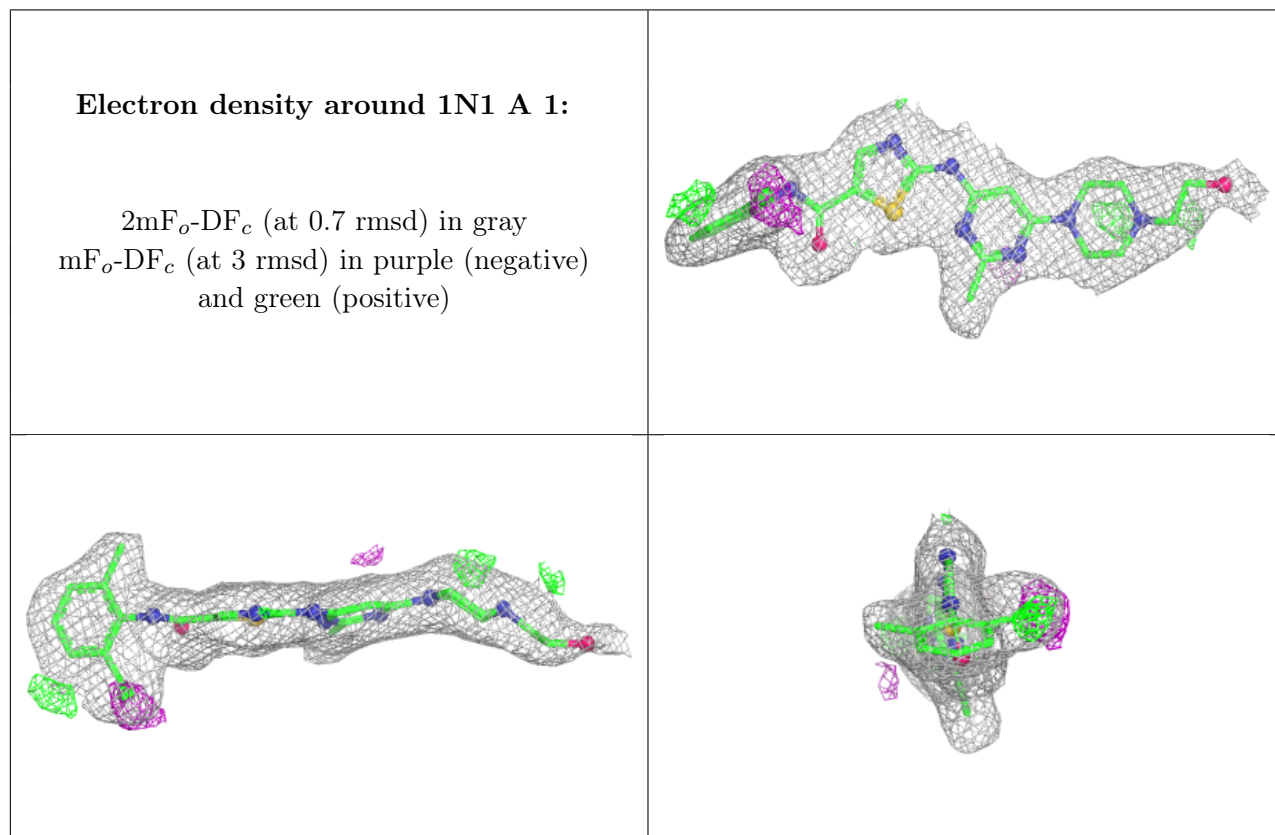
There are no monosaccharides in this entry.

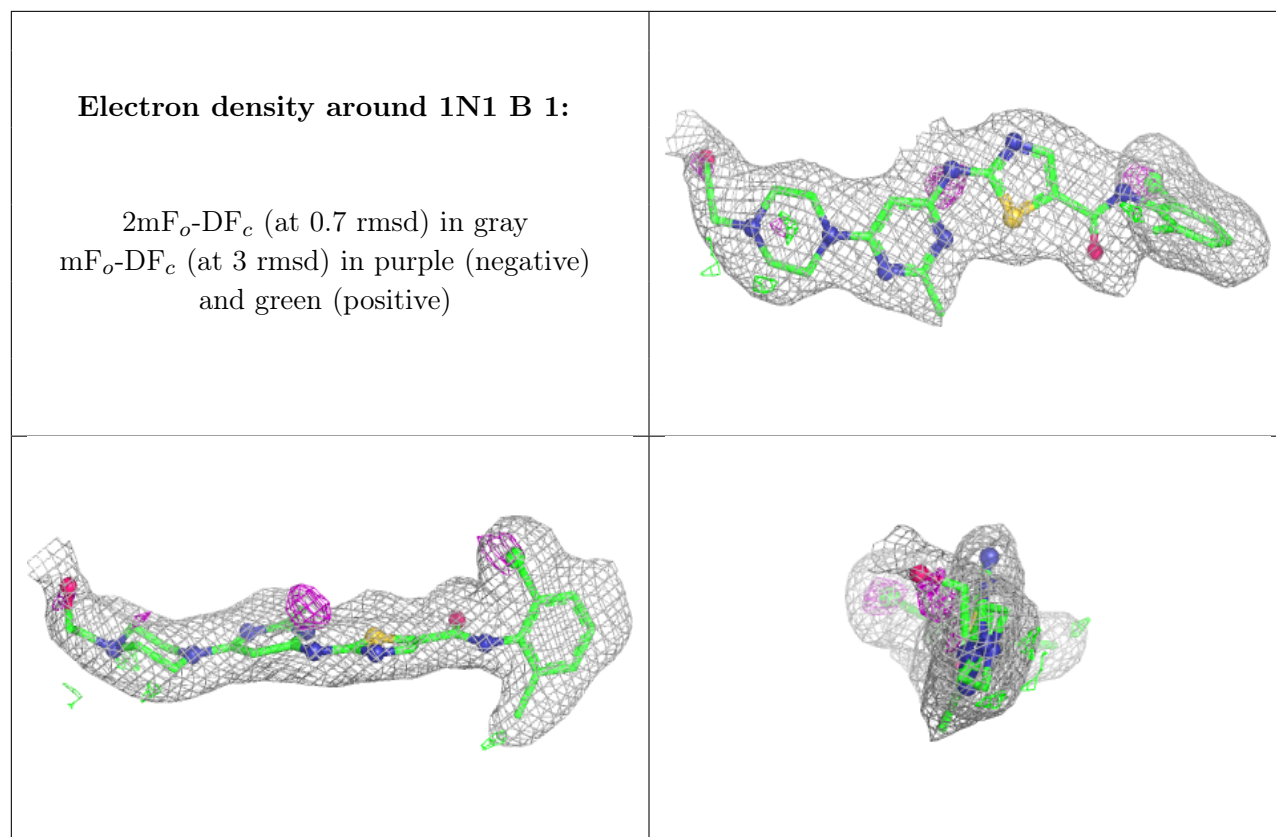
## 6.4 Ligands [i](#)

In the following table, the Atoms column lists the number of modelled atoms in the group and the number defined in the chemical component dictionary. The B-factors column lists the minimum, median, 95<sup>th</sup> percentile and maximum values of B factors of atoms in the group. The column labelled 'Q< 0.9' lists the number of atoms with occupancy less than 0.9.

Mol	Type	Chain	Res	Atoms	RSCC	RSR	B-factors( $\text{\AA}^2$ )	Q<0.9
3	GOL	A	534	6/6	0.87	0.15	49,52,53,53	0
3	GOL	B	534	6/6	0.88	0.13	38,44,45,48	0
2	1N1	A	1	33/33	0.93	0.09	29,35,43,51	0
2	1N1	B	1	33/33	0.93	0.10	25,31,40,48	0

The following is a graphical depiction of the model fit to experimental electron density of all instances of the Ligand of Interest. In addition, ligands with molecular weight > 250 and outliers as shown on the geometry validation Tables will also be included. Each fit is shown from different orientation to approximate a three-dimensional view.





## 6.5 Other polymers [i](#)

There are no such residues in this entry.