



Full wwPDB X-ray Structure Validation Report ⓘ

Apr 29, 2025 – 06:29 AM EDT

PDB ID : 4G0S / pdb_00004g0s
Title : Crystal Structure of Epiphyas postvittana Takeout 1 expressed in Sf9 cells
Authors : Hamiaux, C.; Baker, E.N.; Newcomb, R.D.
Deposited on : 2012-07-10
Resolution : 2.19 Å(reported)

This is a Full wwPDB X-ray Structure Validation Report for a publicly released PDB entry.

We welcome your comments at validation@mail.wwpdb.org

A user guide is available at

<https://www.wwpdb.org/validation/2017/XrayValidationReportHelp>

with specific help available everywhere you see the ⓘ symbol.

The types of validation reports are described at

<http://www.wwpdb.org/validation/2017/FAQs#types>.

The following versions of software and data (see [references ⓘ](#)) were used in the production of this report:

MolProbity : 4-5-2 with Phenix2.0rc1
Mogul : 2022.3.0, CSD as543be (2022)
Xtriage (Phenix) : 2.0rc1
EDS : 3.0
Percentile statistics : 20231227.v01 (using entries in the PDB archive December 27th 2023)
CCP4 : 9.0.006 (Gargrove)
Density-Fitness : 1.0.12
Ideal geometry (proteins) : Engh & Huber (2001)
Ideal geometry (DNA, RNA) : Parkinson et al. (1996)
Validation Pipeline (wwPDB-VP) : 2.43.1

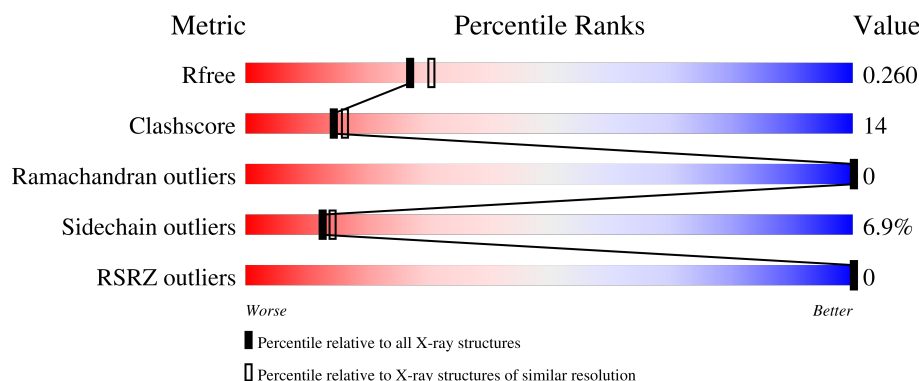
1 Overall quality at a glance

The following experimental techniques were used to determine the structure:

X-RAY DIFFRACTION

The reported resolution of this entry is 2.19 Å.

Percentile scores (ranging between 0-100) for global validation metrics of the entry are shown in the following graphic. The table shows the number of entries on which the scores are based.



Metric	Whole archive (#Entries)	Similar resolution (#Entries, resolution range(Å))
R_{free}	164625	5791 (2.20-2.20)
Clashscore	180529	6634 (2.20-2.20)
Ramachandran outliers	177936	6560 (2.20-2.20)
Sidechain outliers	177891	6561 (2.20-2.20)
RSRZ outliers	164620	5791 (2.20-2.20)

The table below summarises the geometric issues observed across the polymeric chains and their fit to the electron density. The red, orange, yellow and green segments of the lower bar indicate the fraction of residues that contain outliers for ≥ 3 , 2, 1 and 0 types of geometric quality criteria respectively. A grey segment represents the fraction of residues that are not modelled. The numeric value for each fraction is indicated below the corresponding segment, with a dot representing fractions $\leq 5\%$. The upper red bar (where present) indicates the fraction of residues that have poor fit to the electron density. The numeric value is given above the bar.

Mol	Chain	Length	Quality of chain
1	A	220	
1	B	220	

2 Entry composition [i](#)

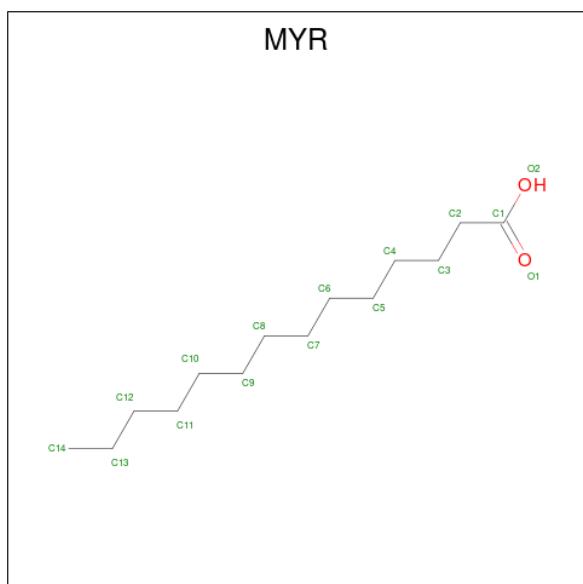
There are 3 unique types of molecules in this entry. The entry contains 3605 atoms, of which 0 are hydrogens and 0 are deuteriums.

In the tables below, the ZeroOcc column contains the number of atoms modelled with zero occupancy, the AltConf column contains the number of residues with at least one atom in alternate conformation and the Trace column contains the number of residues modelled with at most 2 atoms.

- Molecule 1 is a protein called Takeout-like protein 1.

Mol	Chain	Residues	Atoms					ZeroOcc	AltConf	Trace
1	A	219	Total	C	N	O	S	0	0	0
			1719	1111	282	318	8			
1	B	219	Total	C	N	O	S	0	0	0
			1719	1111	282	318	8			

- Molecule 2 is MYRISTIC ACID (CCD ID: MYR) (formula: $C_{14}H_{28}O_2$).



Mol	Chain	Residues	Atoms			ZeroOcc	AltConf
2	A	1	Total	C	O	0	0
			16	14	2		
2	A	1	Total	C	O	0	0
			16	14	2		
2	B	1	Total	C	O	0	0
			16	14	2		
2	B	1	Total	C	O	0	0
			16	14	2		

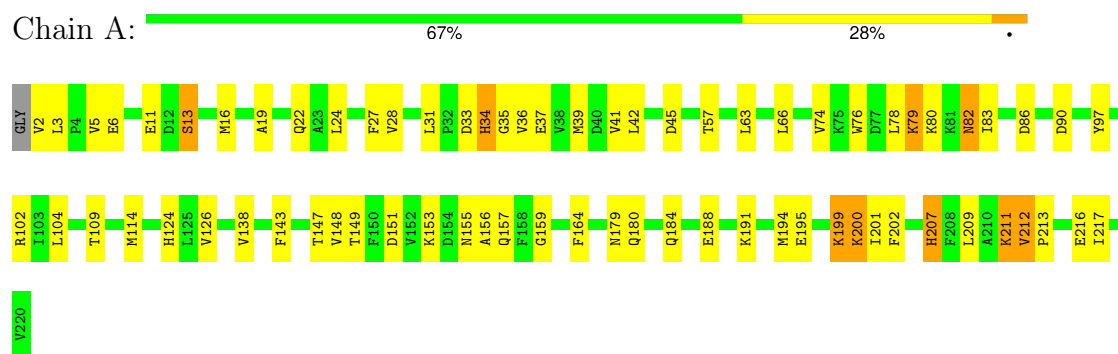
- Molecule 3 is water.

Mol	Chain	Residues	Atoms		ZeroOcc	AltConf
3	A	48	Total 48	O 48	0	0
3	B	55	Total 55	O 55	0	0

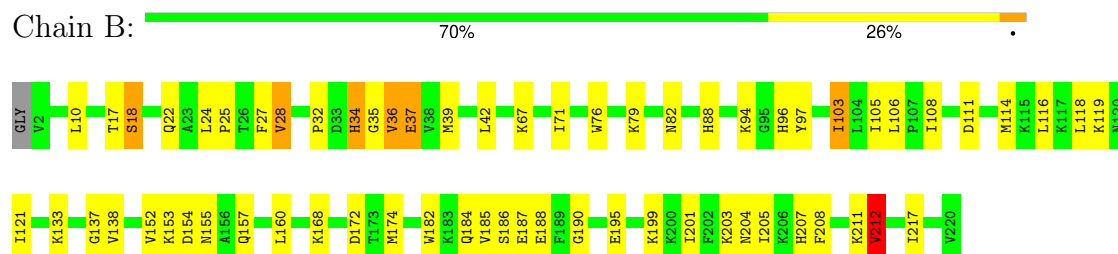
3 Residue-property plots

These plots are drawn for all protein, RNA, DNA and oligosaccharide chains in the entry. The first graphic for a chain summarises the proportions of the various outlier classes displayed in the second graphic. The second graphic shows the sequence view annotated by issues in geometry and electron density. Residues are color-coded according to the number of geometric quality criteria for which they contain at least one outlier: green = 0, yellow = 1, orange = 2 and red = 3 or more. A red dot above a residue indicates a poor fit to the electron density ($RSRZ > 2$). Stretches of 2 or more consecutive residues without any outlier are shown as a green connector. Residues present in the sample, but not in the model, are shown in grey.

- Molecule 1: Takeout-like protein 1



- Molecule 1: Takeout-like protein 1



4 Data and refinement statistics

Property	Value	Source
Space group	P 1 21 1	Depositor
Cell constants a, b, c, α , β , γ	45.84Å 55.18Å 87.28Å 90.00° 90.22° 90.00°	Depositor
Resolution (Å)	45.80 – 2.19 45.80 – 2.20	Depositor EDS
% Data completeness (in resolution range)	98.8 (45.80-2.19) 98.9 (45.80-2.20)	Depositor EDS
R_{merge}	0.13	Depositor
R_{sym}	0.13	Depositor
$\langle I/\sigma(I) \rangle$ ¹	2.66 (at 2.20Å)	Xtriage
Refinement program	REFMAC	Depositor
R, R_{free}	0.194 , 0.276 0.181 , 0.260	Depositor DCC
R_{free} test set	1051 reflections (4.70%)	wwPDB-VP
Wilson B-factor (Å ²)	27.9	Xtriage
Anisotropy	0.740	Xtriage
Bulk solvent k_{sol} (e/Å ³), B_{sol} (Å ²)	0.33 , 14.1	EDS
L-test for twinning ²	$\langle L \rangle = 0.42$, $\langle L^2 \rangle = 0.25$	Xtriage
Estimated twinning fraction	0.439 for h,-k,-l	Xtriage
Reported twinning fraction	0.546 for H, K, L 0.454 for h,-k,-l	Depositor
Outliers	0 of 22347 reflections	Xtriage
F_o, F_c correlation	0.97	EDS
Total number of atoms	3605	wwPDB-VP
Average B, all atoms (Å ²)	28.0	wwPDB-VP

Xtriage's analysis on translational NCS is as follows: *The largest off-origin peak in the Patterson function is 7.76% of the height of the origin peak. No significant pseudotranslation is detected.*

¹Intensities estimated from amplitudes.

²Theoretical values of $\langle |L| \rangle$, $\langle L^2 \rangle$ for acentric reflections are 0.5, 0.333 respectively for untwinned datasets, and 0.375, 0.2 for perfectly twinned datasets.

5 Model quality

5.1 Standard geometry

Bond lengths and bond angles in the following residue types are not validated in this section: MYR

The Z score for a bond length (or angle) is the number of standard deviations the observed value is removed from the expected value. A bond length (or angle) with $|Z| > 5$ is considered an outlier worth inspection. RMSZ is the root-mean-square of all Z scores of the bond lengths (or angles).

Mol	Chain	Bond lengths		Bond angles	
		RMSZ	$\# Z > 5$	RMSZ	$\# Z > 5$
1	A	1.03	2/1752 (0.1%)	1.12	3/2363 (0.1%)
1	B	1.01	0/1752	1.18	8/2363 (0.3%)
All	All	1.02	2/3504 (0.1%)	1.15	11/4726 (0.2%)

All (2) bond length outliers are listed below:

Mol	Chain	Res	Type	Atoms	Z	Observed(Å)	Ideal(Å)
1	A	201	ILE	N-CA	5.44	1.53	1.46
1	A	207	HIS	CG-CD2	5.14	1.41	1.35

All (11) bond angle outliers are listed below:

Mol	Chain	Res	Type	Atoms	Z	Observed(°)	Ideal(°)
1	A	201	ILE	N-CA-C	8.11	118.16	110.30
1	B	34	HIS	N-CA-C	-7.61	98.96	110.14
1	B	36	VAL	N-CA-C	6.19	116.54	107.37
1	B	18	SER	N-CA-C	6.17	118.01	111.28
1	A	34	HIS	N-CA-C	-5.88	100.96	109.31
1	B	212	VAL	CB-CA-C	-5.48	105.84	110.94
1	B	153	LYS	N-CA-C	5.36	116.80	111.07
1	B	187	GLU	N-CA-C	5.19	117.84	111.82
1	A	179	ASN	N-CA-C	5.16	116.90	111.28
1	B	106	LEU	CA-C-N	-5.11	114.97	120.03
1	B	106	LEU	C-N-CA	-5.11	114.97	120.03

There are no chirality outliers.

There are no planarity outliers.

5.2 Too-close contacts ⓘ

In the following table, the Non-H and H(model) columns list the number of non-hydrogen atoms and hydrogen atoms in the chain respectively. The H(added) column lists the number of hydrogen atoms added and optimized by MolProbity. The Clashes column lists the number of clashes within the asymmetric unit, whereas Symm-Clashes lists symmetry-related clashes.

Mol	Chain	Non-H	H(model)	H(added)	Clashes	Symm-Clashes
1	A	1719	0	1745	56	0
1	B	1719	0	1745	42	0
2	A	32	0	54	3	0
2	B	32	0	54	3	0
3	A	48	0	0	11	0
3	B	55	0	0	3	0
All	All	3605	0	3598	98	0

The all-atom clashscore is defined as the number of clashes found per 1000 atoms (including hydrogen atoms). The all-atom clashscore for this structure is 14.

All (98) close contacts within the same asymmetric unit are listed below, sorted by their clash magnitude.

Atom-1	Atom-2	Interatomic distance (Å)	Clash overlap (Å)
1:A:27:PHE:CE2	1:A:39:MET:HE1	1.71	1.23
1:A:157:GLN:HG2	3:A:441:HOH:O	1.34	1.22
1:A:180:GLN:HG3	3:A:445:HOH:O	1.36	1.19
1:B:28:VAL:CG2	1:B:67:LYS:HD2	1.87	1.03
1:A:27:PHE:CE2	1:A:39:MET:CE	2.49	0.95
1:A:34:HIS:HD2	3:A:439:HOH:O	1.50	0.94
1:A:27:PHE:HE2	1:A:39:MET:HE1	1.14	0.94
1:B:28:VAL:HG22	1:B:67:LYS:HD2	1.48	0.94
1:A:35:GLY:HA3	1:A:207:HIS:HB3	1.52	0.92
1:A:138:VAL:HG11	1:A:213:PRO:HB3	1.51	0.89
1:B:27:PHE:CE2	1:B:39:MET:HE1	2.10	0.87
1:A:31:LEU:HB3	3:A:439:HOH:O	1.76	0.86
1:A:148:VAL:HG13	3:A:448:HOH:O	1.76	0.85
1:B:203:LYS:HE3	1:B:207:HIS:CE1	2.17	0.79
1:B:203:LYS:HE3	1:B:207:HIS:HE1	1.49	0.78
1:A:155:ASN:HD22	1:A:156:ALA:H	1.29	0.77
1:B:32:PRO:HG2	3:B:449:HOH:O	1.86	0.74
1:A:109:THR:HG23	1:A:164:PHE:HA	1.72	0.72
1:B:24:LEU:O	1:B:28:VAL:HG13	1.90	0.72
1:B:96:HIS:HE1	1:B:111:ASP:OD1	1.74	0.71
1:A:155:ASN:HD22	1:A:156:ALA:N	1.90	0.69

Continued on next page...

Continued from previous page...

Atom-1	Atom-2	Interatomic distance (Å)	Clash overlap (Å)
1:A:13:SER:HB2	1:A:74:VAL:O	1.93	0.69
1:B:108:ILE:HB	1:B:174:MET:HE3	1.74	0.69
1:B:27:PHE:CD2	1:B:39:MET:HE1	2.28	0.68
1:A:138:VAL:CG1	1:A:213:PRO:HB3	2.23	0.67
1:A:194:MET:HG2	3:A:448:HOH:O	1.94	0.66
1:B:133:LYS:HB3	1:B:137:GLY:HA2	1.77	0.65
1:B:119:LYS:HG2	1:B:154:ASP:HB2	1.79	0.64
1:A:5:VAL:HG21	1:A:19:ALA:HB1	1.81	0.63
1:B:119:LYS:HG2	1:B:154:ASP:CB	2.31	0.61
1:B:27:PHE:HE2	1:B:39:MET:HE1	1.65	0.60
1:B:201:ILE:O	1:B:205:ILE:HG13	2.01	0.60
1:B:39:MET:HG2	1:B:42:LEU:HD13	1.83	0.59
1:A:194:MET:CG	3:A:448:HOH:O	2.49	0.59
1:A:155:ASN:ND2	3:A:441:HOH:O	2.35	0.59
1:A:191:LYS:O	1:A:195:GLU:HG3	2.02	0.59
1:B:190:GLY:HA2	2:B:301:MYR:H51	1.83	0.59
1:A:184:GLN:O	1:A:188:GLU:HB2	2.03	0.58
1:B:10:LEU:O	1:B:76:TRP:HB3	2.03	0.57
1:A:35:GLY:HA3	1:A:207:HIS:CB	2.31	0.57
1:A:109:THR:O	1:A:164:PHE:N	2.28	0.57
1:A:36:VAL:HG13	1:A:39:MET:HE2	1.88	0.56
1:B:35:GLY:HA3	1:B:207:HIS:HB3	1.86	0.56
1:B:37:GLU:O	1:B:39:MET:HG3	2.06	0.55
1:A:217:ILE:O	2:A:300:MYR:C1	2.55	0.55
1:A:79:LYS:HB2	3:A:443:HOH:O	2.07	0.54
1:A:151:ASP:OD2	1:A:153:LYS:NZ	2.24	0.54
1:B:18:SER:O	1:B:22:GLN:HG3	2.08	0.53
1:A:76:TRP:CZ2	1:A:83:ILE:HD11	2.44	0.52
1:B:114:MET:SD	1:B:116:LEU:HD21	2.49	0.52
1:A:194:MET:SD	2:A:301:MYR:H21	2.49	0.52
1:B:190:GLY:CA	2:B:301:MYR:H51	2.41	0.50
1:B:88:HIS:HA	1:B:121:ILE:O	2.11	0.50
1:A:148:VAL:HG21	1:A:194:MET:HE2	1.93	0.50
1:A:16:MET:HE1	2:A:300:MYR:H21	1.94	0.49
1:A:33:ASP:O	1:A:211:LYS:NZ	2.35	0.49
1:A:35:GLY:CA	1:A:207:HIS:HB3	2.31	0.49
1:A:42:LEU:HD23	1:A:63:LEU:HD23	1.95	0.49
1:A:45:ASP:CG	1:A:200:LYS:HE3	2.37	0.48
1:B:155:ASN:OD1	1:B:157:GLN:HG3	2.13	0.48
1:B:121:ILE:HD12	1:B:152:VAL:HG22	1.95	0.48
1:A:11:GLU:HG3	1:A:78:LEU:HD12	1.95	0.47

Continued on next page...

Continued from previous page...

Atom-1	Atom-2	Interatomic distance (Å)	Clash overlap (Å)
1:B:94:LYS:HA	1:B:114:MET:O	2.14	0.47
1:B:17:THR:HG23	1:B:71:ILE:HG22	1.96	0.47
1:B:195:GLU:HG3	3:B:446:HOH:O	2.14	0.47
1:B:103:ILE:HD11	2:B:301:MYR:H131	1.97	0.46
1:B:82:ASN:HB3	3:B:441:HOH:O	2.15	0.46
1:A:76:TRP:CD2	1:A:83:ILE:HG12	2.51	0.46
1:A:24:LEU:O	1:A:28:VAL:HG22	2.16	0.46
1:B:28:VAL:HG21	1:B:67:LYS:HD2	1.90	0.46
1:B:97:TYR:CE1	1:B:160:LEU:HD22	2.51	0.46
1:B:34:HIS:N	1:B:34:HIS:CD2	2.83	0.45
1:B:36:VAL:HA	1:B:204:ASN:OD1	2.17	0.45
1:A:199:LYS:HG3	1:A:200:LYS:N	2.31	0.44
1:A:126:VAL:HB	1:A:147:THR:OG1	2.17	0.44
1:B:182:TRP:O	1:B:186:SER:HB3	2.17	0.44
1:A:24:LEU:HD12	1:A:28:VAL:HG13	1.99	0.44
1:A:143:PHE:HB3	1:A:202:PHE:CE1	2.52	0.44
1:A:213:PRO:O	1:A:216:GLU:HB3	2.18	0.43
1:A:5:VAL:HG21	1:A:19:ALA:CB	2.46	0.43
1:A:34:HIS:CD2	3:A:439:HOH:O	2.38	0.43
1:A:102:ARG:NH1	1:A:104:LEU:O	2.44	0.43
1:A:209:LEU:HA	1:A:212:VAL:HG23	1.99	0.43
1:A:76:TRP:CE2	1:A:83:ILE:HD11	2.54	0.43
1:B:97:TYR:CZ	1:B:160:LEU:HD22	2.53	0.42
1:A:114:MET:HA	1:A:159:GLY:O	2.19	0.42
1:B:184:GLN:O	1:B:185:VAL:C	2.63	0.42
1:A:86:ASP:OD1	1:A:124:HIS:ND1	2.51	0.42
1:A:45:ASP:OD1	1:A:200:LYS:HE3	2.20	0.41
1:A:155:ASN:ND2	1:A:156:ALA:N	2.65	0.41
1:B:79:LYS:HD2	1:B:79:LYS:HA	1.73	0.41
1:A:80:LYS:HB3	1:A:82:ASN:HB2	2.02	0.41
1:B:208:PHE:O	1:B:212:VAL:HG22	2.21	0.41
1:B:24:LEU:HB3	1:B:25:PRO:HD3	2.02	0.41
1:A:57:THR:O	1:A:97:TYR:HA	2.21	0.41
1:B:168:LYS:NZ	1:B:172:ASP:OD2	2.54	0.41
1:A:191:LYS:HB2	3:A:444:HOH:O	2.20	0.40
1:A:124:HIS:HB3	1:A:149:THR:OG1	2.21	0.40

There are no symmetry-related clashes.

5.3 Torsion angles

5.3.1 Protein backbone

In the following table, the Percentiles column shows the percent Ramachandran outliers of the chain as a percentile score with respect to all X-ray entries followed by that with respect to entries of similar resolution.

The Analysed column shows the number of residues for which the backbone conformation was analysed, and the total number of residues.

Mol	Chain	Analysed	Favoured	Allowed	Outliers	Percentiles	
1	A	217/220 (99%)	196 (90%)	21 (10%)	0	100	100
1	B	217/220 (99%)	201 (93%)	16 (7%)	0	100	100
All	All	434/440 (99%)	397 (92%)	37 (8%)	0	100	100

There are no Ramachandran outliers to report.

5.3.2 Protein sidechains

In the following table, the Percentiles column shows the percent sidechain outliers of the chain as a percentile score with respect to all X-ray entries followed by that with respect to entries of similar resolution.

The Analysed column shows the number of residues for which the sidechain conformation was analysed, and the total number of residues.

Mol	Chain	Analysed	Rotameric	Outliers	Percentiles	
1	A	188/188 (100%)	173 (92%)	15 (8%)	10	10
1	B	188/188 (100%)	177 (94%)	11 (6%)	16	20
All	All	376/376 (100%)	350 (93%)	26 (7%)	13	14

All (26) residues with a non-rotameric sidechain are listed below:

Mol	Chain	Res	Type
1	A	2	VAL
1	A	3	LEU
1	A	6	GLU
1	A	13	SER
1	A	22	GLN
1	A	37	GLU
1	A	41	VAL
1	A	66	LEU

Continued on next page...

Continued from previous page...

Mol	Chain	Res	Type
1	A	79	LYS
1	A	82	ASN
1	A	90	ASP
1	A	199	LYS
1	A	200	LYS
1	A	211	LYS
1	A	212	VAL
1	B	28	VAL
1	B	37	GLU
1	B	103	ILE
1	B	105	ILE
1	B	118	LEU
1	B	138	VAL
1	B	188	GLU
1	B	199	LYS
1	B	211	LYS
1	B	212	VAL
1	B	217	ILE

Sometimes sidechains can be flipped to improve hydrogen bonding and reduce clashes. All (8) such sidechains are listed below:

Mol	Chain	Res	Type
1	A	34	HIS
1	A	82	ASN
1	A	155	ASN
1	A	184	GLN
1	A	207	HIS
1	B	34	HIS
1	B	96	HIS
1	B	157	GLN

5.3.3 RNA ⓘ

There are no RNA molecules in this entry.

5.4 Non-standard residues in protein, DNA, RNA chains ⓘ

There are no non-standard protein/DNA/RNA residues in this entry.

5.5 Carbohydrates [i](#)

There are no oligosaccharides in this entry.

5.6 Ligand geometry [i](#)

4 ligands are modelled in this entry.

In the following table, the Counts columns list the number of bonds (or angles) for which Mogul statistics could be retrieved, the number of bonds (or angles) that are observed in the model and the number of bonds (or angles) that are defined in the Chemical Component Dictionary. The Link column lists molecule types, if any, to which the group is linked. The Z score for a bond length (or angle) is the number of standard deviations the observed value is removed from the expected value. A bond length (or angle) with $|Z| > 2$ is considered an outlier worth inspection. RMSZ is the root-mean-square of all Z scores of the bond lengths (or angles).

Mol	Type	Chain	Res	Link	Bond lengths			Bond angles		
					Counts	RMSZ	$\# Z > 2$	Counts	RMSZ	$\# Z > 2$
2	MYR	A	300	-	15,15,15	0.59	0	15,15,15	0.85	1 (6%)
2	MYR	B	301	-	15,15,15	0.61	0	15,15,15	0.94	0
2	MYR	A	301	-	15,15,15	0.70	0	15,15,15	0.92	1 (6%)
2	MYR	B	300	-	15,15,15	0.61	0	15,15,15	0.78	0

In the following table, the Chirals column lists the number of chiral outliers, the number of chiral centers analysed, the number of these observed in the model and the number defined in the Chemical Component Dictionary. Similar counts are reported in the Torsion and Rings columns. '-' means no outliers of that kind were identified.

Mol	Type	Chain	Res	Link	Chirals	Torsions	Rings
2	MYR	A	300	-	-	8/13/13/13	-
2	MYR	B	301	-	-	6/13/13/13	-
2	MYR	A	301	-	-	9/13/13/13	-
2	MYR	B	300	-	-	4/13/13/13	-

There are no bond length outliers.

All (2) bond angle outliers are listed below:

Mol	Chain	Res	Type	Atoms	Z	Observed(°)	Ideal(°)
2	A	300	MYR	C3-C2-C1	-2.09	109.05	114.51
2	A	301	MYR	O2-C1-C2	2.06	120.50	114.00

There are no chirality outliers.

All (27) torsion outliers are listed below:

Mol	Chain	Res	Type	Atoms
2	A	300	MYR	C1-C2-C3-C4
2	A	300	MYR	C5-C6-C7-C8
2	A	301	MYR	C1-C2-C3-C4
2	A	301	MYR	C3-C4-C5-C6
2	B	301	MYR	C5-C6-C7-C8
2	A	301	MYR	C10-C11-C12-C13
2	B	301	MYR	C3-C4-C5-C6
2	B	301	MYR	C9-C10-C11-C12
2	A	300	MYR	C10-C11-C12-C13
2	A	301	MYR	C6-C7-C8-C9
2	B	300	MYR	C11-C10-C9-C8
2	A	301	MYR	C2-C3-C4-C5
2	A	300	MYR	C3-C4-C5-C6
2	A	300	MYR	C9-C10-C11-C12
2	A	301	MYR	C4-C5-C6-C7
2	A	300	MYR	C2-C3-C4-C5
2	A	301	MYR	C9-C10-C11-C12
2	A	301	MYR	C7-C8-C9-C10
2	B	300	MYR	C9-C10-C11-C12
2	B	300	MYR	C10-C11-C12-C13
2	A	300	MYR	C11-C12-C13-C14
2	B	301	MYR	C2-C3-C4-C5
2	A	300	MYR	C7-C8-C9-C10
2	B	301	MYR	C7-C8-C9-C10
2	A	301	MYR	C5-C6-C7-C8
2	B	300	MYR	O2-C1-C2-C3
2	B	301	MYR	C11-C10-C9-C8

There are no ring outliers.

3 monomers are involved in 6 short contacts:

Mol	Chain	Res	Type	Clashes	Symm-Clashes
2	A	300	MYR	2	0
2	B	301	MYR	3	0
2	A	301	MYR	1	0

5.7 Other polymers [i](#)

There are no such residues in this entry.

5.8 Polymer linkage issues ⓘ

There are no chain breaks in this entry.

6 Fit of model and data [i](#)

6.1 Protein, DNA and RNA chains [i](#)

In the following table, the column labelled ‘#RSRZ> 2’ contains the number (and percentage) of RSRZ outliers, followed by percent RSRZ outliers for the chain as percentile scores relative to all X-ray entries and entries of similar resolution. The OWAB column contains the minimum, median, 95th percentile and maximum values of the occupancy-weighted average B-factor per residue. The column labelled ‘Q< 0.9’ lists the number of (and percentage) of residues with an average occupancy less than 0.9.

Mol	Chain	Analysed	<RSRZ>	#RSRZ>2	OWAB(Å ²)	Q<0.9
1	A	219/220 (99%)	-1.63	0 100 100	19, 27, 45, 62	0
1	B	219/220 (99%)	-1.64	0 100 100	19, 26, 41, 57	0
All	All	438/440 (99%)	-1.64	0 100 100	19, 27, 44, 62	0

There are no RSRZ outliers to report.

6.2 Non-standard residues in protein, DNA, RNA chains [i](#)

There are no non-standard protein/DNA/RNA residues in this entry.

6.3 Carbohydrates [i](#)

There are no monosaccharides in this entry.

6.4 Ligands [i](#)

In the following table, the Atoms column lists the number of modelled atoms in the group and the number defined in the chemical component dictionary. The B-factors column lists the minimum, median, 95th percentile and maximum values of B factors of atoms in the group. The column labelled ‘Q< 0.9’ lists the number of atoms with occupancy less than 0.9.

Mol	Type	Chain	Res	Atoms	RSCC	RSR	B-factors(Å ²)	Q<0.9
2	MYR	A	300	16/16	0.98	0.04	31,43,45,46	0
2	MYR	B	301	16/16	0.98	0.04	28,37,50,52	0
2	MYR	B	300	16/16	0.99	0.03	34,39,42,42	0
2	MYR	A	301	16/16	0.99	0.04	25,33,38,40	0

6.5 Other polymers [i](#)

There are no such residues in this entry.