



Full wwPDB X-ray Structure Validation Report ⓘ

Jun 24, 2025 – 01:50 pm BST

PDB ID : 5FS9 / pdb_00005fs9
Title : Crystal structure of the G338E mutant of human apoptosis inducing factor
Authors : Sevrioukova, I.
Deposited on : 2015-12-31
Resolution : 1.75 Å(reported)

This is a Full wwPDB X-ray Structure Validation Report for a publicly released PDB entry.

We welcome your comments at validation@mail.wwpdb.org

A user guide is available at

<https://www.wwpdb.org/validation/2017/XrayValidationReportHelp>

with specific help available everywhere you see the ⓘ symbol.

The types of validation reports are described at

<http://www.wwpdb.org/validation/2017/FAQs#types>.

The following versions of software and data (see [references ⓘ](#)) were used in the production of this report:

MolProbity : 4-5-2 with Phenix2.0rc1
Mogul : 1.8.4, CSD as541be (2020)
Xtriage (Phenix) : 2.0rc1
EDS : 3.0
buster-report : 1.1.7 (2018)
Percentile statistics : 20231227.v01 (using entries in the PDB archive December 27th 2023)
CCP4 : 9.0.003 (Gargrove)
Density-Fitness : 1.0.11
Ideal geometry (proteins) : Engh & Huber (2001)
Ideal geometry (DNA, RNA) : Parkinson et al. (1996)
Validation Pipeline (wwPDB-VP) : 2.44

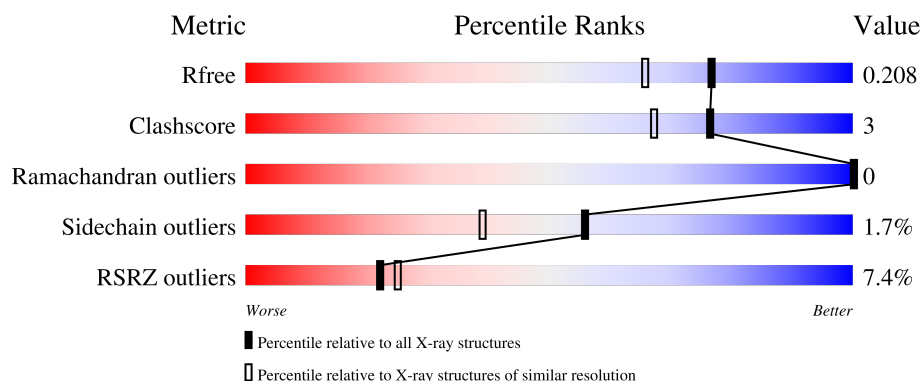
1 Overall quality at a glance

The following experimental techniques were used to determine the structure:

X-RAY DIFFRACTION

The reported resolution of this entry is 1.75 Å.

Percentile scores (ranging between 0-100) for global validation metrics of the entry are shown in the following graphic. The table shows the number of entries on which the scores are based.



Metric	Whole archive (#Entries)	Similar resolution (#Entries, resolution range(Å))
R_{free}	164625	2888 (1.76-1.76)
Clashscore	180529	3097 (1.76-1.76)
Ramachandran outliers	177936	3072 (1.76-1.76)
Sidechain outliers	177891	3072 (1.76-1.76)
RSRZ outliers	164620	2887 (1.76-1.76)

The table below summarises the geometric issues observed across the polymeric chains and their fit to the electron density. The red, orange, yellow and green segments of the lower bar indicate the fraction of residues that contain outliers for ≥ 3 , 2, 1 and 0 types of geometric quality criteria respectively. A grey segment represents the fraction of residues that are not modelled. The numeric value for each fraction is indicated below the corresponding segment, with a dot representing fractions $\leq 5\%$. The upper red bar (where present) indicates the fraction of residues that have poor fit to the electron density. The numeric value is given above the bar.

Mol	Chain	Length	Quality of chain
1	A	515	<div> <div>6%</div> <div> <div></div> <div>81%</div> <div>8%</div> <div>11%</div> </div> </div>
1	B	515	<div> <div>8%</div> <div> <div></div> <div>84%</div> <div>5%</div> <div>10%</div> </div> </div>

2 Entry composition

There are 4 unique types of molecules in this entry. The entry contains 7896 atoms, of which 0 are hydrogens and 0 are deuteriums.

In the tables below, the ZeroOcc column contains the number of atoms modelled with zero occupancy, the AltConf column contains the number of residues with at least one atom in alternate conformation and the Trace column contains the number of residues modelled with at most 2 atoms.

- Molecule 1 is a protein called APOPTOSIS-INDUCING FACTOR 1, MITOCHONDRIAL.

Mol	Chain	Residues	Atoms					ZeroOcc	AltConf	Trace
1	A	459	Total	C	N	O	S	0	10	0
			3597	2284	635	665	13			
1	B	465	Total	C	N	O	S	0	9	0
			3640	2308	643	676	13			

There are 10 discrepancies between the modelled and reference sequences:

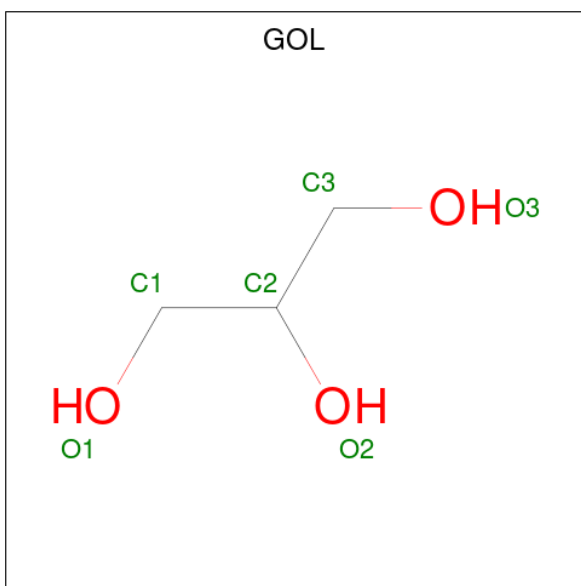
Chain	Residue	Modelled	Actual	Comment	Reference
A	614	LEU	-	expression tag	UNP O95831
A	615	VAL	-	expression tag	UNP O95831
A	616	PRO	-	expression tag	UNP O95831
A	617	ARG	-	expression tag	UNP O95831
A	338	GLU	GLY	engineered mutation	UNP O95831
B	614	LEU	-	expression tag	UNP O95831
B	615	VAL	-	expression tag	UNP O95831
B	616	PRO	-	expression tag	UNP O95831
B	617	ARG	-	expression tag	UNP O95831
B	338	GLU	GLY	engineered mutation	UNP O95831

- Molecule 2 is FLAVIN-ADENINE DINUCLEOTIDE (CCD ID: FAD) (formula: C₂₇H₃₃N₉O₁₅P₂).



Mol	Chain	Residues	Atoms					ZeroOcc	AltConf
2	A	1	Total 53	C 27	N 9	O 15	P 2	0	0
2	B	1	Total 53	C 27	N 9	O 15	P 2	0	0

- Molecule 3 is GLYCEROL (CCD ID: GOL) (formula: $\text{C}_3\text{H}_8\text{O}_3$).

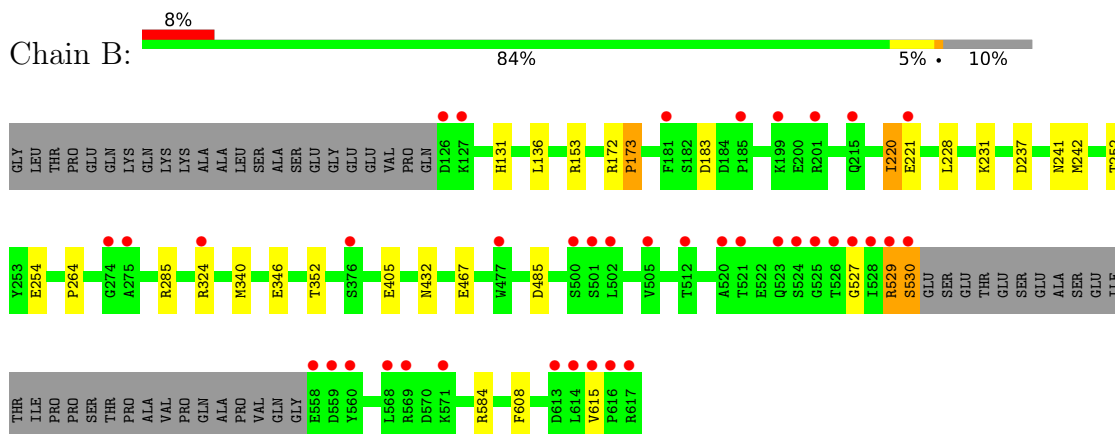


Mol	Chain	Residues	Atoms	ZeroOcc	AltConf
3	A	1	Total C O 6 3 3	0	0
3	B	1	Total C O 6 3 3	0	0

- Molecule 4 is water.

Mol	Chain	Residues	Atoms		ZeroOcc	AltConf
4	A	274	Total 274	O 274	0	0
4	B	267	Total 267	O 267	0	0

- Molecule 1: APOPTOSIS-INDUCING FACTOR 1, MITOCHONDRIAL



4 Data and refinement statistics

Property	Value	Source
Space group	P 21 21 21	Depositor
Cell constants a, b, c, α , β , γ	90.62Å 114.93Å 121.77Å 90.00° 90.00° 90.00°	Depositor
Resolution (Å)	114.93 – 1.75 83.58 – 1.75	Depositor EDS
% Data completeness (in resolution range)	99.7 (114.93-1.75) 99.7 (83.58-1.75)	Depositor EDS
R_{merge}	0.10	Depositor
R_{sym}	(Not available)	Depositor
$\langle I/\sigma(I) \rangle$ ¹	1.22 (at 1.75Å)	Xtriage
Refinement program	REFMAC 5.8.0049	Depositor
R, R_{free}	0.175 , 0.200 0.183 , 0.208	Depositor DCC
R_{free} test set	6431 reflections (5.03%)	wwPDB-VP
Wilson B-factor (Å ²)	32.1	Xtriage
Anisotropy	0.038	Xtriage
Bulk solvent k_{sol} (e/Å ³), B_{sol} (Å ²)	0.37 , 41.1	EDS
L-test for twinning ²	$\langle L \rangle = 0.50$, $\langle L^2 \rangle = 0.33$	Xtriage
Estimated twinning fraction	No twinning to report.	Xtriage
F_o, F_c correlation	0.97	EDS
Total number of atoms	7896	wwPDB-VP
Average B, all atoms (Å ²)	40.0	wwPDB-VP

Xtriage's analysis on translational NCS is as follows: *The largest off-origin peak in the Patterson function is 3.27% of the height of the origin peak. No significant pseudotranslation is detected.*

¹Intensities estimated from amplitudes.

²Theoretical values of $\langle |L| \rangle$, $\langle L^2 \rangle$ for acentric reflections are 0.5, 0.333 respectively for untwinned datasets, and 0.375, 0.2 for perfectly twinned datasets.

5 Model quality [i](#)

5.1 Standard geometry [i](#)

Bond lengths and bond angles in the following residue types are not validated in this section: GOL, FAD

The Z score for a bond length (or angle) is the number of standard deviations the observed value is removed from the expected value. A bond length (or angle) with $|Z| > 5$ is considered an outlier worth inspection. RMSZ is the root-mean-square of all Z scores of the bond lengths (or angles).

Mol	Chain	Bond lengths		Bond angles	
		RMSZ	$\# Z > 5$	RMSZ	$\# Z > 5$
1	A	0.73	0/3691	0.80	2/4988 (0.0%)
1	B	0.73	0/3735	0.83	2/5046 (0.0%)
All	All	0.73	0/7426	0.81	4/10034 (0.0%)

Chiral center outliers are detected by calculating the chiral volume of a chiral center and verifying if the center is modelled as a planar moiety or with the opposite hand. A planarity outlier is detected by checking planarity of atoms in a peptide group, atoms in a mainchain group or atoms of a sidechain that are expected to be planar.

Mol	Chain	#Chirality outliers	#Planarity outliers
1	B	0	1

There are no bond length outliers.

All (4) bond angle outliers are listed below:

Mol	Chain	Res	Type	Atoms	Z	Observed($^{\circ}$)	Ideal($^{\circ}$)
1	A	524	SER	N-CA-C	6.37	117.89	111.07
1	B	346	GLU	N-CA-C	5.79	118.33	111.33
1	B	173	PRO	N-CA-C	5.54	117.46	110.70
1	A	173	PRO	N-CA-C	5.14	116.97	110.70

There are no chirality outliers.

All (1) planarity outliers are listed below:

Mol	Chain	Res	Type	Group
1	B	529	ARG	Peptide

5.2 Too-close contacts ⓘ

In the following table, the Non-H and H(model) columns list the number of non-hydrogen atoms and hydrogen atoms in the chain respectively. The H(added) column lists the number of hydrogen atoms added and optimized by MolProbity. The Clashes column lists the number of clashes within the asymmetric unit, whereas Symm-Clashes lists symmetry-related clashes.

Mol	Chain	Non-H	H(model)	H(added)	Clashes	Symm-Clashes
1	A	3597	0	3659	24	0
1	B	3640	0	3694	16	0
2	A	53	0	31	0	0
2	B	53	0	31	1	0
3	A	6	0	8	0	0
3	B	6	0	8	0	0
4	A	274	0	0	3	2
4	B	267	0	0	2	2
All	All	7896	0	7431	41	2

The all-atom clashscore is defined as the number of clashes found per 1000 atoms (including hydrogen atoms). The all-atom clashscore for this structure is 3.

All (41) close contacts within the same asymmetric unit are listed below, sorted by their clash magnitude.

Atom-1	Atom-2	Interatomic distance (Å)	Clash overlap (Å)
1:A:454:HIS:ND1	4:A:2211:HOH:O	2.10	0.85
1:B:241:ASN:ND2	1:B:432[A]:ASN:HD21	1.92	0.68
1:A:524:SER:HB3	1:A:526:THR:HG22	1.77	0.67
1:A:153:ARG:HD3	1:A:467:GLU:HG2	1.90	0.54
1:A:131:HIS:HE1	1:A:254:GLU:OE2	1.92	0.52
1:A:527:GLY:HA3	4:A:2041:HOH:O	2.09	0.52
1:A:305:ILE:HD11	1:A:319:LEU:HD12	1.92	0.52
1:A:128:ALA:HB2	1:A:228:LEU:HD11	1.93	0.51
1:A:188[A]:THR:HG23	1:A:291:ARG:HG2	1.92	0.51
1:B:131:HIS:HE1	1:B:254:GLU:OE2	1.97	0.48
1:A:182:SER:CB	1:A:187[B]:VAL:HG21	2.44	0.47
1:A:489:ASP:HB2	4:A:2143:HOH:O	2.14	0.47
1:B:228:LEU:HG	1:B:231:LYS:HG3	1.95	0.47
1:A:310:PHE:CE1	1:A:340:MET:HE3	2.51	0.46
1:B:340:MET:CE	1:B:352:THR:HG21	2.46	0.46
1:B:153:ARG:HD3	1:B:467:GLU:HG2	1.97	0.45
1:A:370:GLN:CG	1:A:384:LYS:HA	2.46	0.45
1:B:220:ILE:HG22	1:B:221:GLU:O	2.17	0.44
1:B:131:HIS:HD2	1:B:252:THR:OG1	2.00	0.44

Continued on next page...

Continued from previous page...

Atom-1	Atom-2	Interatomic distance (Å)	Clash overlap (Å)
1:A:237:ASP:HB3	1:A:242[B]:MET:HE2	1.99	0.44
1:B:264:PRO:HD3	1:B:285:ARG:HD3	2.00	0.43
1:B:527:GLY:HA3	4:B:2034:HOH:O	2.18	0.43
1:B:529:ARG:O	1:B:530:SER:HB2	2.18	0.43
1:B:584:ARG:HD2	1:B:608:PHE:HA	1.99	0.43
1:A:370:GLN:HG3	1:A:384:LYS:HA	2.00	0.43
1:A:343:ILE:HG23	1:A:498:VAL:HG12	2.00	0.43
1:B:485:ASP:OD1	1:B:529:ARG:NH1	2.50	0.43
1:A:340:MET:CE	1:A:352:THR:HG21	2.49	0.42
1:B:405:GLU:HG3	4:B:2164:HOH:O	2.18	0.42
1:A:581:ILE:HD11	1:A:610:ILE:HD11	2.01	0.42
1:A:402:PRO:HG3	1:A:451:ARG:CZ	2.49	0.42
1:A:131:HIS:HD2	1:A:252:THR:OG1	2.02	0.42
1:B:172:ARG:N	1:B:173:PRO:CD	2.83	0.42
2:B:1000:FAD:HM81	2:B:1000:FAD:HM73	1.84	0.42
1:B:340:MET:HE1	1:B:352:THR:HG21	2.01	0.41
1:A:283:LEU:HD23	1:A:396:ALA:HB3	2.01	0.41
1:A:182:SER:OG	1:A:187[B]:VAL:HG21	2.19	0.41
1:B:237:ASP:CB	1:B:242[B]:MET:HE2	2.51	0.40

All (2) symmetry-related close contacts are listed below. The label for Atom-2 includes the symmetry operator and encoded unit-cell translations to be applied.

Atom-1	Atom-2	Interatomic distance (Å)	Clash overlap (Å)
4:A:2258:HOH:O	4:B:2246:HOH:O[2_454]	1.55	0.65
4:A:2255:HOH:O	4:B:2250:HOH:O[2_454]	2.17	0.03

5.3 Torsion angles

5.3.1 Protein backbone

In the following table, the Percentiles column shows the percent Ramachandran outliers of the chain as a percentile score with respect to all X-ray entries followed by that with respect to entries of similar resolution.

The Analysed column shows the number of residues for which the backbone conformation was analysed, and the total number of residues.

Mol	Chain	Analysed	Favoured	Allowed	Outliers	Percentiles
1	A	465/515 (90%)	452 (97%)	13 (3%)	0	100 100

Continued on next page...

Continued from previous page...

Mol	Chain	Analysed	Favoured	Allowed	Outliers	Percentiles	
1	B	470/515 (91%)	456 (97%)	14 (3%)	0	100	100
All	All	935/1030 (91%)	908 (97%)	27 (3%)	0	100	100

There are no Ramachandran outliers to report.

5.3.2 Protein sidechains ⓘ

In the following table, the Percentiles column shows the percent sidechain outliers of the chain as a percentile score with respect to all X-ray entries followed by that with respect to entries of similar resolution.

The Analysed column shows the number of residues for which the sidechain conformation was analysed, and the total number of residues.

Mol	Chain	Analysed	Rotameric	Outliers	Percentiles	
1	A	387/424 (91%)	380 (98%)	7 (2%)	54	37
1	B	392/424 (92%)	386 (98%)	6 (2%)	60	45
All	All	779/848 (92%)	766 (98%)	13 (2%)	56	39

All (13) residues with a non-rotameric sidechain are listed below:

Mol	Chain	Res	Type
1	A	136	LEU
1	A	165	ASP
1	A	213	SER
1	A	220	ILE
1	A	524	SER
1	A	529	ARG
1	A	530	SER
1	B	136	LEU
1	B	183	ASP
1	B	220	ILE
1	B	324	ARG
1	B	530	SER
1	B	615	VAL

Sometimes sidechains can be flipped to improve hydrogen bonding and reduce clashes. All (8) such sidechains are listed below:

Mol	Chain	Res	Type
1	A	131	HIS
1	A	457	HIS
1	A	583	ASN
1	A	598	HIS
1	B	131	HIS
1	B	241	ASN
1	B	250	GLN
1	B	598	HIS

5.3.3 RNA [i](#)

There are no RNA molecules in this entry.

5.4 Non-standard residues in protein, DNA, RNA chains [i](#)

There are no non-standard protein/DNA/RNA residues in this entry.

5.5 Carbohydrates [i](#)

There are no oligosaccharides in this entry.

5.6 Ligand geometry [i](#)

4 ligands are modelled in this entry.

In the following table, the Counts columns list the number of bonds (or angles) for which Mogul statistics could be retrieved, the number of bonds (or angles) that are observed in the model and the number of bonds (or angles) that are defined in the Chemical Component Dictionary. The Link column lists molecule types, if any, to which the group is linked. The Z score for a bond length (or angle) is the number of standard deviations the observed value is removed from the expected value. A bond length (or angle) with $|Z| > 2$ is considered an outlier worth inspection. RMSZ is the root-mean-square of all Z scores of the bond lengths (or angles).

Mol	Type	Chain	Res	Link	Bond lengths			Bond angles		
					Counts	RMSZ	$\# Z > 2$	Counts	RMSZ	$\# Z > 2$
2	FAD	B	1000	-	53,58,58	1.30	5 (9%)	68,89,89	1.35	10 (14%)
3	GOL	A	1002	-	5,5,5	0.42	0	5,5,5	0.37	0
2	FAD	A	1000	-	53,58,58	1.30	4 (7%)	68,89,89	1.38	6 (8%)
3	GOL	B	1001	-	5,5,5	0.22	0	5,5,5	0.59	0

In the following table, the Chirals column lists the number of chiral outliers, the number of chiral

centers analysed, the number of these observed in the model and the number defined in the Chemical Component Dictionary. Similar counts are reported in the Torsion and Rings columns. '-' means no outliers of that kind were identified.

Mol	Type	Chain	Res	Link	Chirals	Torsions	Rings
2	FAD	B	1000	-	-	2/30/50/50	0/6/6/6
3	GOL	A	1002	-	-	2/4/4/4	-
2	FAD	A	1000	-	-	3/30/50/50	0/6/6/6
3	GOL	B	1001	-	-	0/4/4/4	-

All (9) bond length outliers are listed below:

Mol	Chain	Res	Type	Atoms	Z	Observed(Å)	Ideal(Å)
2	B	1000	FAD	C9A-C5X	4.62	1.48	1.41
2	A	1000	FAD	C9A-C5X	4.51	1.48	1.41
2	A	1000	FAD	C4X-N5	3.44	1.37	1.30
2	B	1000	FAD	C4X-N5	3.16	1.36	1.30
2	B	1000	FAD	C5X-N5	-2.99	1.33	1.39
2	A	1000	FAD	C8-C7	2.41	1.46	1.40
2	B	1000	FAD	C8-C7	2.21	1.46	1.40
2	A	1000	FAD	C5'-C4'	2.16	1.54	1.51
2	B	1000	FAD	C1'-C2'	2.16	1.55	1.52

All (16) bond angle outliers are listed below:

Mol	Chain	Res	Type	Atoms	Z	Observed(°)	Ideal(°)
2	A	1000	FAD	N3A-C2A-N1A	-4.84	121.11	128.68
2	A	1000	FAD	O4B-C1B-C2B	-4.08	100.97	106.93
2	B	1000	FAD	N3A-C2A-N1A	-3.70	122.89	128.68
2	A	1000	FAD	C2A-N1A-C6A	3.21	124.25	118.75
2	B	1000	FAD	O2'-C2'-C1'	3.17	117.47	109.80
2	A	1000	FAD	O2A-PA-O1A	2.80	126.10	112.24
2	B	1000	FAD	O2A-PA-O1A	2.79	126.02	112.24
2	A	1000	FAD	O4-C4-C4X	-2.71	119.41	126.60
2	B	1000	FAD	O4B-C1B-C2B	-2.65	103.05	106.93
2	B	1000	FAD	N6A-C6A-N1A	2.61	124.00	118.57
2	B	1000	FAD	C1B-N9A-C4A	-2.61	122.05	126.64
2	B	1000	FAD	C4-C4X-N5	2.49	121.78	118.23
2	B	1000	FAD	O4-C4-C4X	-2.34	120.39	126.60
2	A	1000	FAD	O2'-C2'-C1'	2.29	115.34	109.80
2	B	1000	FAD	N3-C2-N1	2.07	123.44	119.38
2	B	1000	FAD	C2A-N1A-C6A	2.02	122.21	118.75

There are no chirality outliers.

All (7) torsion outliers are listed below:

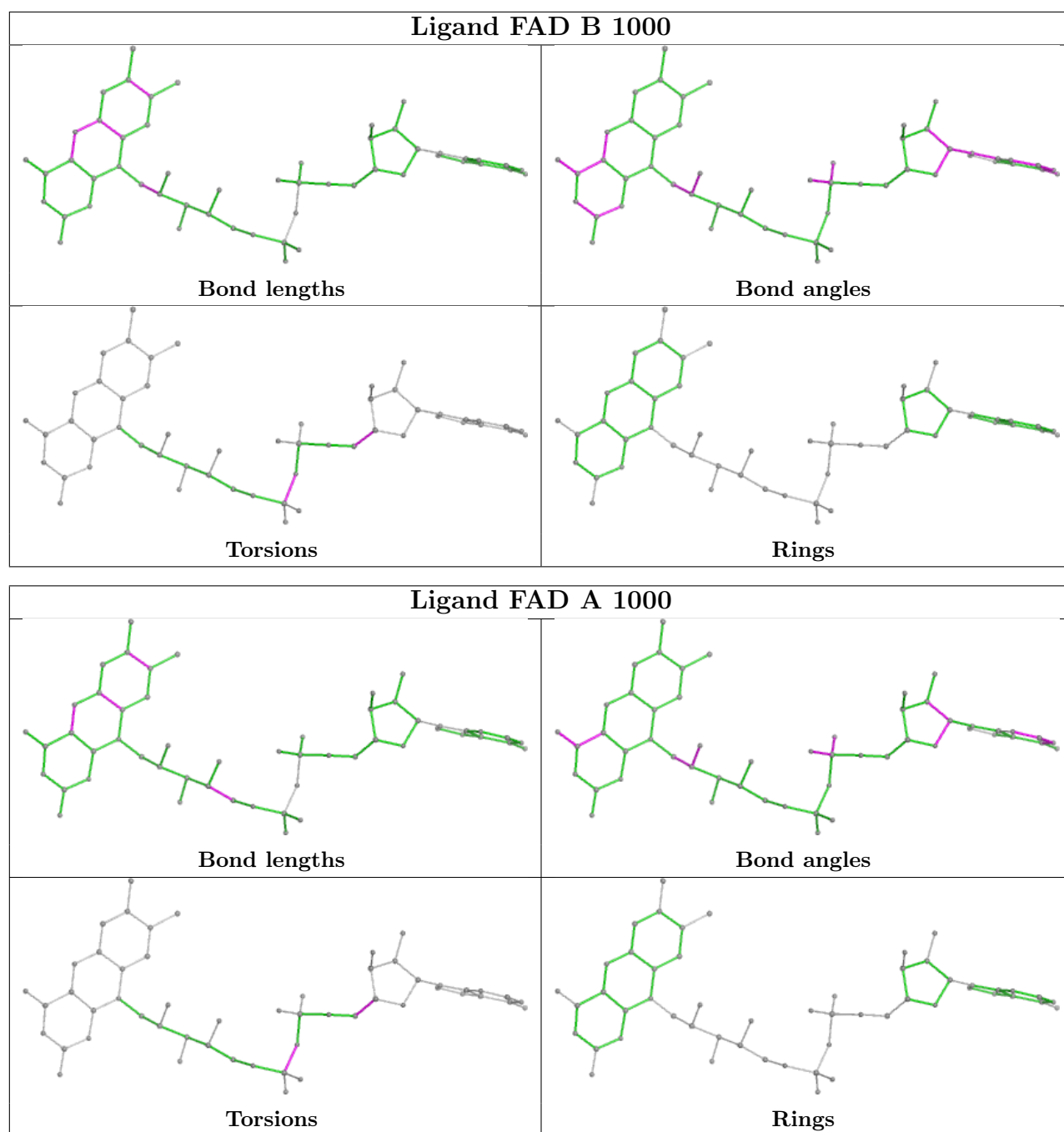
Mol	Chain	Res	Type	Atoms
3	A	1002	GOL	C1-C2-C3-O3
3	A	1002	GOL	O2-C2-C3-O3
2	A	1000	FAD	PA-O3P-P-O5'
2	B	1000	FAD	PA-O3P-P-O5'
2	B	1000	FAD	O4B-C4B-C5B-O5B
2	A	1000	FAD	O4B-C4B-C5B-O5B
2	A	1000	FAD	C3B-C4B-C5B-O5B

There are no ring outliers.

1 monomer is involved in 1 short contact:

Mol	Chain	Res	Type	Clashes	Symm-Clashes
2	B	1000	FAD	1	0

The following is a two-dimensional graphical depiction of Mogul quality analysis of bond lengths, bond angles, torsion angles, and ring geometry for all instances of the Ligand of Interest. In addition, ligands with molecular weight > 250 and outliers as shown on the validation Tables will also be included. For torsion angles, if less than 5% of the Mogul distribution of torsion angles is within 10 degrees of the torsion angle in question, then that torsion angle is considered an outlier. Any bond that is central to one or more torsion angles identified as an outlier by Mogul will be highlighted in the graph. For rings, the root-mean-square deviation (RMSD) between the ring in question and similar rings identified by Mogul is calculated over all ring torsion angles. If the average RMSD is greater than 60 degrees and the minimal RMSD between the ring in question and any Mogul-identified rings is also greater than 60 degrees, then that ring is considered an outlier. The outliers are highlighted in purple. The color gray indicates Mogul did not find sufficient equivalents in the CSD to analyse the geometry.



5.7 Other polymers [i](#)

There are no such residues in this entry.

5.8 Polymer linkage issues [i](#)

There are no chain breaks in this entry.

6 Fit of model and data

6.1 Protein, DNA and RNA chains

In the following table, the column labelled ‘#RSRZ > 2’ contains the number (and percentage) of RSRZ outliers, followed by percent RSRZ outliers for the chain as percentile scores relative to all X-ray entries and entries of similar resolution. The OWAB column contains the minimum, median, 95th percentile and maximum values of the occupancy-weighted average B-factor per residue. The column labelled ‘Q < 0.9’ lists the number of (and percentage) of residues with an average occupancy less than 0.9.

Mol	Chain	Analysed	<RSRZ>	#RSRZ > 2		OWAB(Å ²)	Q < 0.9
1	A	459/515 (89%)	0.44	29 (6%)	27 30	12, 36, 68, 103	10 (2%)
1	B	465/515 (90%)	0.50	39 (8%)	18 21	14, 36, 65, 103	9 (1%)
All	All	924/1030 (89%)	0.47	68 (7%)	22 25	12, 36, 66, 103	19 (2%)

All (68) RSRZ outliers are listed below:

Mol	Chain	Res	Type	RSRZ
1	A	528	ILE	7.5
1	A	521	THR	6.0
1	B	615	VAL	5.8
1	B	528	ILE	5.5
1	B	560	TYR	4.8
1	B	525	GLY	4.6
1	A	560	TYR	4.4
1	A	526	THR	4.3
1	A	520	ALA	3.8
1	A	527	GLY	3.8
1	A	530	SER	3.6
1	A	502	LEU	3.6
1	B	617	ARG	3.6
1	B	477	TRP	3.5
1	B	614	LEU	3.5
1	A	376	SER	3.5
1	B	616	PRO	3.4
1	A	529	ARG	3.4
1	B	530	SER	3.4
1	A	326	LEU	3.3
1	B	529	ARG	3.1
1	A	325	ALA	3.1
1	B	181	PHE	3.0
1	B	376	SER	3.0

Continued on next page...

Continued from previous page...

Mol	Chain	Res	Type	RSRZ
1	A	522	GLU	3.0
1	A	523	GLN	2.9
1	B	527	GLY	2.9
1	B	521	THR	2.9
1	B	501[A]	SER	2.8
1	A	525	GLY	2.8
1	B	558	GLU	2.7
1	A	185	PRO	2.7
1	B	215	GLN	2.6
1	A	194	LYS	2.6
1	A	182	SER	2.5
1	B	526	THR	2.5
1	A	377	GLY	2.5
1	B	571	LYS	2.5
1	B	274	GLY	2.5
1	A	347	TYR	2.5
1	A	570	ASP	2.5
1	B	126	ASP	2.5
1	A	269	ALA	2.4
1	B	500	SER	2.4
1	B	523	GLN	2.4
1	B	275	ALA	2.4
1	B	199	LYS	2.3
1	B	520	ALA	2.3
1	B	613	ASP	2.3
1	B	502	LEU	2.3
1	B	505	VAL	2.3
1	B	127	LYS	2.2
1	B	221	GLU	2.2
1	A	513	ALA	2.2
1	B	524	SER	2.2
1	A	375	SER	2.1
1	B	559	ASP	2.1
1	B	512	THR	2.1
1	B	324	ARG	2.1
1	B	185	PRO	2.1
1	A	380	LEU	2.1
1	A	524	SER	2.1
1	B	568	LEU	2.1
1	A	126	ASP	2.1
1	A	612	GLU	2.0
1	A	559	ASP	2.0

Continued on next page...

Continued from previous page...

Mol	Chain	Res	Type	RSRZ
1	B	201	ARG	2.0
1	B	569	ARG	2.0

6.2 Non-standard residues in protein, DNA, RNA chains [i](#)

There are no non-standard protein/DNA/RNA residues in this entry.

6.3 Carbohydrates [i](#)

There are no oligosaccharides in this entry.

6.4 Ligands [i](#)

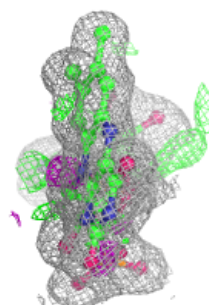
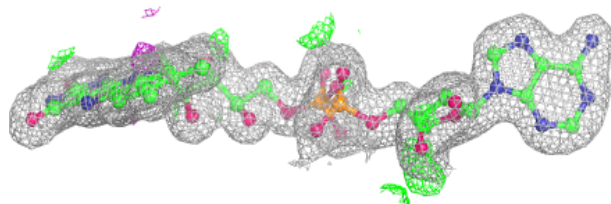
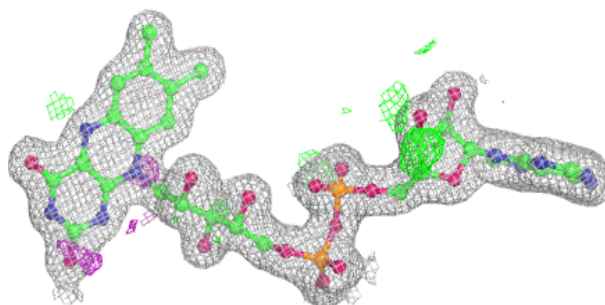
In the following table, the Atoms column lists the number of modelled atoms in the group and the number defined in the chemical component dictionary. The B-factors column lists the minimum, median, 95th percentile and maximum values of B factors of atoms in the group. The column labelled 'Q < 0.9' lists the number of atoms with occupancy less than 0.9.

Mol	Type	Chain	Res	Atoms	RSCC	RSR	B-factors(\AA^2)	Q<0.9
3	GOL	A	1002	6/6	0.79	0.15	50,63,64,70	0
3	GOL	B	1001	6/6	0.79	0.22	65,69,74,79	0
2	FAD	A	1000	53/53	0.98	0.05	21,25,29,36	0
2	FAD	B	1000	53/53	0.98	0.05	21,25,31,35	0

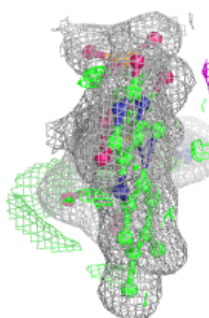
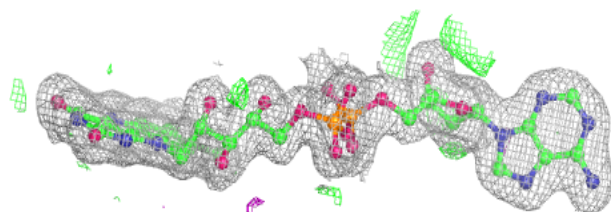
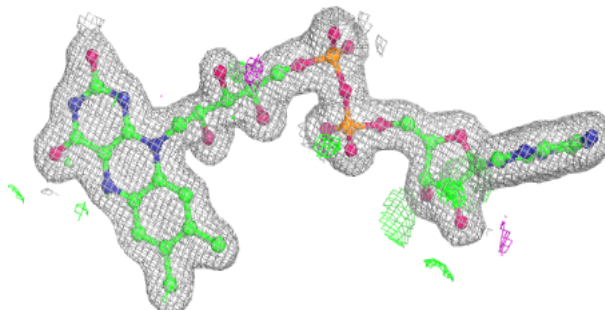
The following is a graphical depiction of the model fit to experimental electron density of all instances of the Ligand of Interest. In addition, ligands with molecular weight > 250 and outliers as shown on the geometry validation Tables will also be included. Each fit is shown from different orientation to approximate a three-dimensional view.

Electron density around FAD A 1000:

$2mF_o-DF_c$ (at 0.7 rmsd) in gray
 mF_o-DF_c (at 3 rmsd) in purple (negative)
and green (positive)

**Electron density around FAD B 1000:**

$2mF_o-DF_c$ (at 0.7 rmsd) in gray
 mF_o-DF_c (at 3 rmsd) in purple (negative)
and green (positive)



6.5 Other polymers [i](#)

There are no such residues in this entry.