



Full wwPDB X-ray Structure Validation Report ⓘ

Apr 21, 2025 – 10:45 AM EDT

PDB ID : 7FOE / pdb_00007foe
Title : PanDDA analysis group deposition – Aar2/RNaseH in complex with fragment P08A08 from the F2X-Universal Library
Authors : Barthel, T.; Wollenhaupt, J.; Lima, G.M.A.; Wahl, M.C.; Weiss, M.S.
Deposited on : 2022-08-26
Resolution : 1.65 Å(reported)

This is a Full wwPDB X-ray Structure Validation Report for a publicly released PDB entry.

We welcome your comments at validation@mail.wwpdb.org

A user guide is available at

<https://www.wwpdb.org/validation/2017/XrayValidationReportHelp>

with specific help available everywhere you see the ⓘ symbol.

The types of validation reports are described at

<http://www.wwpdb.org/validation/2017/FAQs#types>.

The following versions of software and data (see [references ⓘ](#)) were used in the production of this report:

MolProbity	:	4.02b-467
Mogul	:	2022.3.0, CSD as543be (2022)
Xtriage (Phenix)	:	2.0rc1
EDS	:	3.0
buster-report	:	1.1.7 (2018)
Percentile statistics	:	20231227.v01 (using entries in the PDB archive December 27th 2023)
CCP4	:	9.0.006 (Gargrove)
Density-Fitness	:	1.0.12
Ideal geometry (proteins)	:	Engh & Huber (2001)
Ideal geometry (DNA, RNA)	:	Parkinson et al. (1996)
Validation Pipeline (wwPDB-VP)	:	2.42

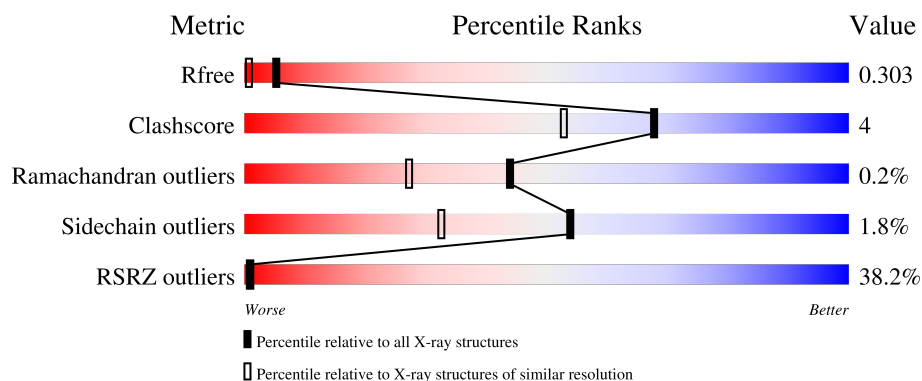
1 Overall quality at a glance

The following experimental techniques were used to determine the structure:

X-RAY DIFFRACTION

The reported resolution of this entry is 1.65 Å.

Percentile scores (ranging between 0-100) for global validation metrics of the entry are shown in the following graphic. The table shows the number of entries on which the scores are based.



Metric	Whole archive (#Entries)	Similar resolution (#Entries, resolution range(Å))
R_{free}	164625	2328 (1.66-1.66)
Clashscore	180529	2515 (1.66-1.66)
Ramachandran outliers	177936	2475 (1.66-1.66)
Sidechain outliers	177891	2475 (1.66-1.66)
RSRZ outliers	164620	2328 (1.66-1.66)

The table below summarises the geometric issues observed across the polymeric chains and their fit to the electron density. The red, orange, yellow and green segments of the lower bar indicate the fraction of residues that contain outliers for ≥ 3 , 2, 1 and 0 types of geometric quality criteria respectively. A grey segment represents the fraction of residues that are not modelled. The numeric value for each fraction is indicated below the corresponding segment, with a dot representing fractions $\leq 5\%$. The upper red bar (where present) indicates the fraction of residues that have poor fit to the electron density. The numeric value is given above the bar.

Mol	Chain	Length	Quality of chain
1	A	258	<div> <div>37%</div> <div>76%</div> <div>14%</div> <div>8%</div> </div>
2	B	308	<div> <div>35%</div> <div>88%</div> <div>9%</div> <div>.</div> </div>

2 Entry composition

There are 4 unique types of molecules in this entry. The entry contains 9229 atoms, of which 4524 are hydrogens and 0 are deuteriums.

In the tables below, the ZeroOcc column contains the number of atoms modelled with zero occupancy, the AltConf column contains the number of residues with at least one atom in alternate conformation and the Trace column contains the number of residues modelled with at most 2 atoms.

- Molecule 1 is a protein called Pre-mRNA-splicing factor 8.

Mol	Chain	Residues	Atoms						ZeroOcc	AltConf	Trace
			Total	C	H	N	O	S			
1	A	237	4068	1287	2060	336	373	12	0	21	0

There are 3 discrepancies between the modelled and reference sequences:

Chain	Residue	Modelled	Actual	Comment	Reference
A	1833	GLY	-	expression tag	UNP P33334
A	1834	ALA	-	expression tag	UNP P33334
A	1835	MET	-	expression tag	UNP P33334

- Molecule 2 is a protein called A1 cistron-splicing factor AAR2.

Mol	Chain	Residues	Atoms						ZeroOcc	AltConf	Trace
			Total	C	H	N	O	S			
2	B	300	5044	1654	2464	421	485	20	0	17	0

There are 20 discrepancies between the modelled and reference sequences:

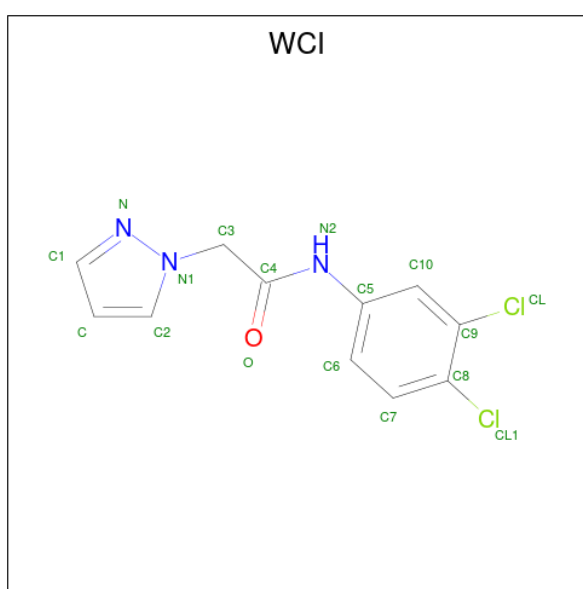
Chain	Residue	Modelled	Actual	Comment	Reference
B	-3	GLY	-	expression tag	UNP P32357
B	-2	ALA	-	expression tag	UNP P32357
B	-1	MET	-	expression tag	UNP P32357
B	0	ALA	-	expression tag	UNP P32357
B	166	SER	LEU	conflict	UNP P32357
B	167	SER	LYS	conflict	UNP P32357
B	?	-	LEU	deletion	UNP P32357
B	?	-	GLN	deletion	UNP P32357
B	?	-	LYS	deletion	UNP P32357
B	?	-	ALA	deletion	UNP P32357
B	?	-	GLY	deletion	UNP P32357
B	?	-	SER	deletion	UNP P32357
B	?	-	LYS	deletion	UNP P32357

Continued on next page...

Continued from previous page...

Chain	Residue	Modelled	Actual	Comment	Reference
B	?	-	MET	deletion	UNP P32357
B	?	-	GLU	deletion	UNP P32357
B	?	-	ALA	deletion	UNP P32357
B	?	-	LYS	deletion	UNP P32357
B	?	-	ASN	deletion	UNP P32357
B	?	-	GLU	deletion	UNP P32357
B	170	SER	ASP	conflict	UNP P32357

- Molecule 3 is N-(3,4-dichlorophenyl)-2-(1H-pyrazol-1-yl)acetamide (CCD ID: WCI) (formula: C₁₁H₉Cl₂N₃O).



Mol	Chain	Residues	Atoms					ZeroOcc	AltConf
3	B	1	Total	C	Cl	N	O	0	0
			17	11	2	3	1		

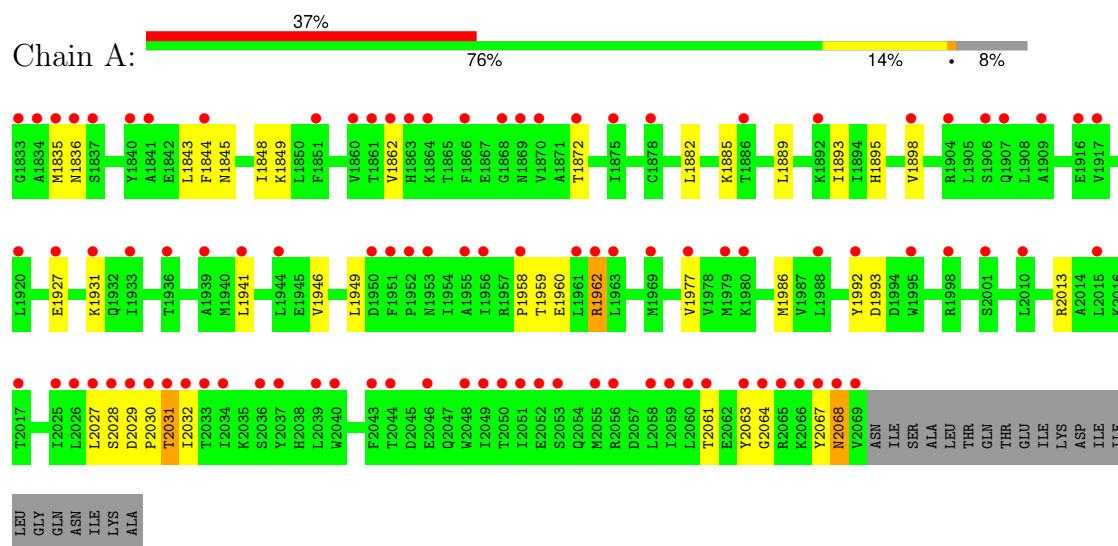
- Molecule 4 is water.

Mol	Chain	Residues	Atoms		ZeroOcc	AltConf
4	A	50	Total	O	0	0
			50	50		
4	B	50	Total	O	0	0
			50	50		

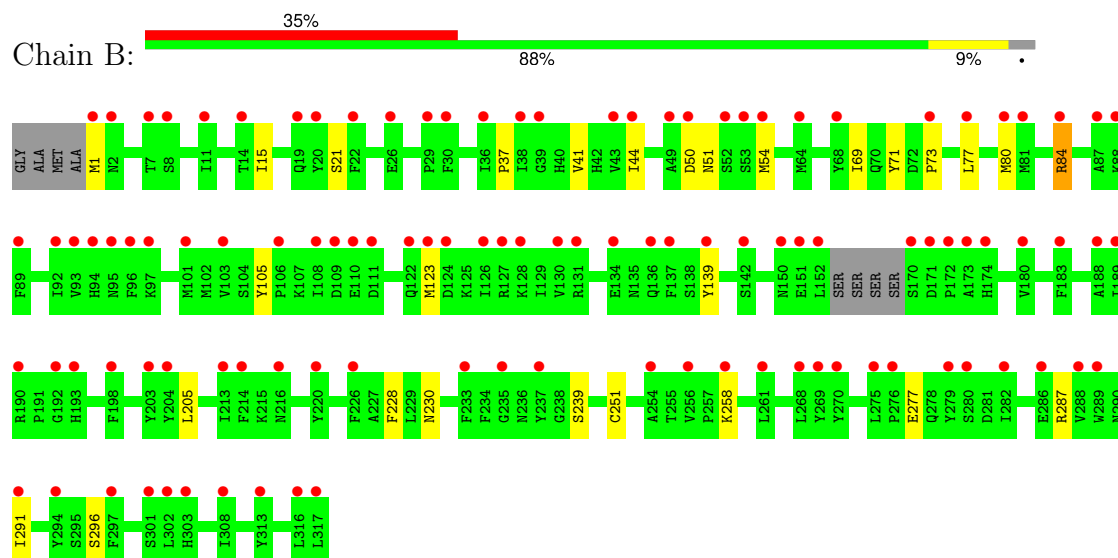
3 Residue-property plots [i](#)

These plots are drawn for all protein, RNA, DNA and oligosaccharide chains in the entry. The first graphic for a chain summarises the proportions of the various outlier classes displayed in the second graphic. The second graphic shows the sequence view annotated by issues in geometry and electron density. Residues are color-coded according to the number of geometric quality criteria for which they contain at least one outlier: green = 0, yellow = 1, orange = 2 and red = 3 or more. A red dot above a residue indicates a poor fit to the electron density ($RSRZ > 2$). Stretches of 2 or more consecutive residues without any outlier are shown as a green connector. Residues present in the sample, but not in the model, are shown in grey.

• Molecule 1: Pre-mRNA-splicing factor 8



• Molecule 2: A1 cistron-splicing factor AAR2



4 Data and refinement statistics

Property	Value	Source
Space group	C 1 2 1	Depositor
Cell constants a, b, c, α , β , γ	88.27Å 81.81Å 93.17Å 90.00° 107.82° 90.00°	Depositor
Resolution (Å)	44.71 – 1.65 44.71 – 1.65	Depositor EDS
% Data completeness (in resolution range)	97.5 (44.71-1.65) 97.6 (44.71-1.65)	Depositor EDS
R_{merge}	(Not available)	Depositor
R_{sym}	(Not available)	Depositor
$\langle I/\sigma(I) \rangle$ ¹	0.96 (at 1.65Å)	Xtriage
Refinement program	PHENIX 1.17.1_3660	Depositor
R, R_{free}	0.259 , 0.296 0.269 , 0.303	Depositor DCC
R_{free} test set	2099 reflections (2.85%)	wwPDB-VP
Wilson B-factor (Å ²)	39.7	Xtriage
Anisotropy	0.310	Xtriage
Bulk solvent k_{sol} (e/Å ³), B_{sol} (Å ²)	0.42 , 51.1	EDS
L-test for twinning ²	$\langle L \rangle = 0.50$, $\langle L^2 \rangle = 0.34$	Xtriage
Estimated twinning fraction	No twinning to report.	Xtriage
F_o, F_c correlation	0.95	EDS
Total number of atoms	9229	wwPDB-VP
Average B, all atoms (Å ²)	74.0	wwPDB-VP

Xtriage's analysis on translational NCS is as follows: *The largest off-origin peak in the Patterson function is 5.84% of the height of the origin peak. No significant pseudotranslation is detected.*

¹Intensities estimated from amplitudes.

²Theoretical values of $\langle |L| \rangle$, $\langle L^2 \rangle$ for acentric reflections are 0.5, 0.333 respectively for untwinned datasets, and 0.375, 0.2 for perfectly twinned datasets.

5 Model quality [i](#)

5.1 Standard geometry [i](#)

Bond lengths and bond angles in the following residue types are not validated in this section: WCI

The Z score for a bond length (or angle) is the number of standard deviations the observed value is removed from the expected value. A bond length (or angle) with $|Z| > 5$ is considered an outlier worth inspection. RMSZ is the root-mean-square of all Z scores of the bond lengths (or angles).

Mol	Chain	Bond lengths		Bond angles	
		RMSZ	$\# Z > 5$	RMSZ	$\# Z > 5$
1	A	0.71	1/2149 (0.0%)	0.84	5/2911 (0.2%)
2	B	0.72	2/2739 (0.1%)	0.81	2/3699 (0.1%)
All	All	0.71	3/4888 (0.1%)	0.82	7/6610 (0.1%)

All (3) bond length outliers are listed below:

Mol	Chain	Res	Type	Atoms	Z	Observed(Å)	Ideal(Å)
2	B	228	PHE	CE2-CZ	6.53	1.49	1.37
2	B	139	TYR	CD1-CE1	5.90	1.48	1.39
1	A	1992	TYR	CE2-CZ	-5.00	1.32	1.38

All (7) bond angle outliers are listed below:

Mol	Chain	Res	Type	Atoms	Z	Observed(°)	Ideal(°)
1	A	1986	MET	CG-SD-CE	-8.14	87.17	100.20
2	B	205	LEU	CB-CG-CD1	-6.86	99.34	111.00
1	A	2030	PRO	N-CA-C	6.47	128.92	112.10
1	A	1889	LEU	CB-CG-CD1	-6.37	100.18	111.00
1	A	2031	THR	CB-CA-C	-5.56	96.58	111.60
1	A	1882	LEU	CB-CG-CD1	-5.53	101.59	111.00
2	B	84	ARG	CB-CA-C	5.52	121.45	110.40

There are no chirality outliers.

There are no planarity outliers.

5.2 Too-close contacts [i](#)

In the following table, the Non-H and H(model) columns list the number of non-hydrogen atoms and hydrogen atoms in the chain respectively. The H(added) column lists the number of hydrogen

atoms added and optimized by MolProbity. The Clashes column lists the number of clashes within the asymmetric unit, whereas Symm-Clashes lists symmetry-related clashes.

Mol	Chain	Non-H	H(model)	H(added)	Clashes	Symm-Clashes
1	A	2008	2060	1974	18	0
2	B	2580	2464	2398	14	0
3	B	17	0	0	0	0
4	A	50	0	0	2	0
4	B	50	0	0	3	0
All	All	4705	4524	4372	32	0

The all-atom clashscore is defined as the number of clashes found per 1000 atoms (including hydrogen atoms). The all-atom clashscore for this structure is 4.

All (32) close contacts within the same asymmetric unit are listed below, sorted by their clash magnitude.

Atom-1	Atom-2	Interatomic distance (Å)	Clash overlap (Å)
1:A:1962:ARG:O	1:A:2013:ARG:NH1	2.13	0.82
1:A:2064:GLY:O	1:A:2068:ASN:N	2.18	0.75
1:A:1927:GLU:OE1	4:A:2101:HOH:O	2.09	0.70
2:B:1:MET:N	4:B:501:HOH:O	2.25	0.69
1:A:1844:PHE:O	1:A:1885:LYS:NZ	2.17	0.64
2:B:230[B]:ASN:ND2	2:B:239:SER:OG	2.38	0.56
1:A:1848:ILE:H	1:A:1931[A]:LYS:HZ2	1.54	0.55
2:B:69:ILE:HD13	2:B:80:MET:HA	1.90	0.54
2:B:258:LYS:HD2	2:B:258:LYS:H	1.73	0.52
2:B:50:ASP:OD1	2:B:51:ASN:N	2.42	0.52
1:A:1895:HIS:O	1:A:1898[A]:VAL:HG22	2.09	0.52
2:B:287:ARG:O	2:B:291:ILE:HD13	2.10	0.52
1:A:1962:ARG:HD3	1:A:1962:ARG:H	1.75	0.51
1:A:1835:MET:H	1:A:1959:THR:HA	1.77	0.50
1:A:1843:LEU:HA	1:A:1849:LYS:HD2	1.94	0.49
2:B:41[A]:VAL:HG12	4:B:536:HOH:O	2.12	0.49
1:A:2061:THR:O	1:A:2064:GLY:N	2.49	0.46
2:B:44[A]:ILE:O	2:B:44[A]:ILE:HG23	2.16	0.46
1:A:1993:ASP:OD1	4:A:2102:HOH:O	2.20	0.45
2:B:37:PRO:HD3	2:B:105:TYR:CD1	2.51	0.45
1:A:1862:VAL:HG22	1:A:1872:THR:HG22	1.98	0.45
2:B:277:GLU:CD	2:B:277:GLU:H	2.21	0.44
2:B:71:TYR:CE2	2:B:73:PRO:HA	2.53	0.43
1:A:1893:ILE:HD11	1:A:1977:VAL:HG22	2.01	0.43
1:A:2063:TYR:O	1:A:2067:TYR:HD1	2.02	0.42
1:A:1941:LEU:HD11	1:A:1958:PRO:HB3	2.01	0.42

Continued on next page...

Continued from previous page...

Atom-1	Atom-2	Interatomic distance (Å)	Clash overlap (Å)
2:B:251:CYS:O	2:B:296:SER:HB2	2.20	0.42
2:B:15:ILE:O	2:B:21:SER:HA	2.19	0.41
1:A:1836:ASN:HB3	1:A:1960[A]:GLU:HB2	2.03	0.41
1:A:1946:VAL:O	1:A:1949:LEU:HG	2.21	0.41
2:B:54[A]:MET:HE2	4:B:541:HOH:O	2.20	0.40
1:A:1845:ASN:OD1	1:A:1849:LYS:NZ	2.54	0.40

There are no symmetry-related clashes.

5.3 Torsion angles [i](#)

5.3.1 Protein backbone [i](#)

In the following table, the Percentiles column shows the percent Ramachandran outliers of the chain as a percentile score with respect to all X-ray entries followed by that with respect to entries of similar resolution.

The Analysed column shows the number of residues for which the backbone conformation was analysed, and the total number of residues.

Mol	Chain	Analysed	Favoured	Allowed	Outliers	Percentiles	
1	A	258/258 (100%)	247 (96%)	10 (4%)	1 (0%)	30	15
2	B	315/308 (102%)	306 (97%)	9 (3%)	0	100	100
All	All	573/566 (101%)	553 (96%)	19 (3%)	1 (0%)	44	27

All (1) Ramachandran outliers are listed below:

Mol	Chain	Res	Type
1	A	2068	ASN

5.3.2 Protein sidechains [i](#)

In the following table, the Percentiles column shows the percent sidechain outliers of the chain as a percentile score with respect to all X-ray entries followed by that with respect to entries of similar resolution.

The Analysed column shows the number of residues for which the sidechain conformation was analysed, and the total number of residues.

Mol	Chain	Analysed	Rotameric	Outliers	Percentiles	
1	A	237/233 (102%)	231 (98%)	6 (2%)	42	19
2	B	294/284 (104%)	290 (99%)	4 (1%)	62	43
All	All	531/517 (103%)	521 (98%)	10 (2%)	54	30

All (10) residues with a non-rotameric sidechain are listed below:

Mol	Chain	Res	Type
1	A	1962	ARG
1	A	2027	LEU
1	A	2028	SER
1	A	2029	ASP
1	A	2031	THR
1	A	2032	ILE
2	B	77	LEU
2	B	84	ARG
2	B	123[A]	MET
2	B	123[B]	MET

Sometimes sidechains can be flipped to improve hydrogen bonding and reduce clashes. All (4) such sidechains are listed below:

Mol	Chain	Res	Type
1	A	2038	HIS
2	B	47	GLN
2	B	135	ASN
2	B	150	ASN

5.3.3 RNA ⓘ

There are no RNA molecules in this entry.

5.4 Non-standard residues in protein, DNA, RNA chains ⓘ

There are no non-standard protein/DNA/RNA residues in this entry.

5.5 Carbohydrates ⓘ

There are no oligosaccharides in this entry.

5.6 Ligand geometry

1 ligand is modelled in this entry.

In the following table, the Counts columns list the number of bonds (or angles) for which Mogul statistics could be retrieved, the number of bonds (or angles) that are observed in the model and the number of bonds (or angles) that are defined in the Chemical Component Dictionary. The Link column lists molecule types, if any, to which the group is linked. The Z score for a bond length (or angle) is the number of standard deviations the observed value is removed from the expected value. A bond length (or angle) with $|Z| > 2$ is considered an outlier worth inspection. RMSZ is the root-mean-square of all Z scores of the bond lengths (or angles).

Mol	Type	Chain	Res	Link	Bond lengths			Bond angles		
					Counts	RMSZ	$\# Z > 2$	Counts	RMSZ	$\# Z > 2$
3	WCI	B	401	-	17,18,18	2.11	4 (23%)	22,24,24	1.54	6 (27%)

In the following table, the Chirals column lists the number of chiral outliers, the number of chiral centers analysed, the number of these observed in the model and the number defined in the Chemical Component Dictionary. Similar counts are reported in the Torsion and Rings columns. '-' means no outliers of that kind were identified.

Mol	Type	Chain	Res	Link	Chirals	Torsions	Rings
3	WCI	B	401	-	-	1/7/8/8	0/2/2/2

All (4) bond length outliers are listed below:

Mol	Chain	Res	Type	Atoms	Z	Observed(Å)	Ideal(Å)
3	B	401	WCI	C8-CL1	-5.66	1.60	1.73
3	B	401	WCI	C6-C5	-3.06	1.34	1.39
3	B	401	WCI	C4-N2	2.31	1.40	1.35
3	B	401	WCI	C-C1	2.20	1.43	1.37

All (6) bond angle outliers are listed below:

Mol	Chain	Res	Type	Atoms	Z	Observed(°)	Ideal(°)
3	B	401	WCI	C5-N2-C4	-3.81	120.78	127.52
3	B	401	WCI	C2-N1-N	2.33	113.59	111.56
3	B	401	WCI	C10-C9-CL	-2.26	114.75	118.45
3	B	401	WCI	C3-N1-C2	-2.16	125.53	129.15
3	B	401	WCI	C-C2-N1	-2.12	104.52	107.06
3	B	401	WCI	C5-C10-C9	-2.03	117.08	119.54

There are no chirality outliers.

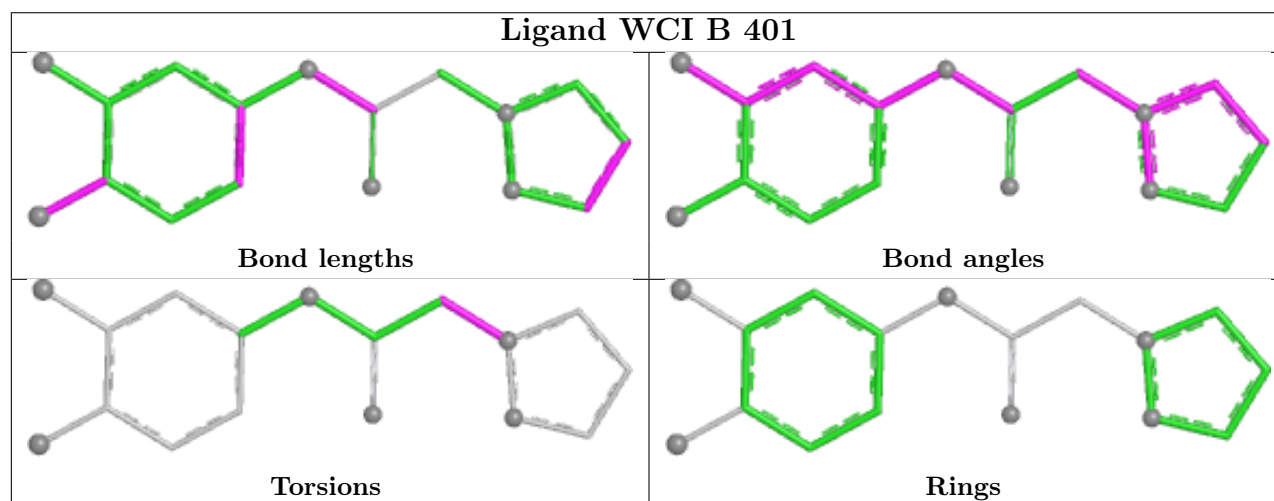
All (1) torsion outliers are listed below:

Mol	Chain	Res	Type	Atoms
3	B	401	WCI	C4-C3-N1-N

There are no ring outliers.

No monomer is involved in short contacts.

The following is a two-dimensional graphical depiction of Mogul quality analysis of bond lengths, bond angles, torsion angles, and ring geometry for all instances of the Ligand of Interest. In addition, ligands with molecular weight > 250 and outliers as shown on the validation Tables will also be included. For torsion angles, if less than 5% of the Mogul distribution of torsion angles is within 10 degrees of the torsion angle in question, then that torsion angle is considered an outlier. Any bond that is central to one or more torsion angles identified as an outlier by Mogul will be highlighted in the graph. For rings, the root-mean-square deviation (RMSD) between the ring in question and similar rings identified by Mogul is calculated over all ring torsion angles. If the average RMSD is greater than 60 degrees and the minimal RMSD between the ring in question and any Mogul-identified rings is also greater than 60 degrees, then that ring is considered an outlier. The outliers are highlighted in purple. The color gray indicates Mogul did not find sufficient equivalents in the CSD to analyse the geometry.



5.7 Other polymers [i](#)

There are no such residues in this entry.

5.8 Polymer linkage issues [i](#)

There are no chain breaks in this entry.

6 Fit of model and data [i](#)

6.1 Protein, DNA and RNA chains [i](#)

In the following table, the column labelled ‘#RSRZ > 2’ contains the number (and percentage) of RSRZ outliers, followed by percent RSRZ outliers for the chain as percentile scores relative to all X-ray entries and entries of similar resolution. The OWAB column contains the minimum, median, 95th percentile and maximum values of the occupancy-weighted average B-factor per residue. The column labelled ‘Q < 0.9’ lists the number of (and percentage) of residues with an average occupancy less than 0.9.

Mol	Chain	Analysed	<RSRZ>	#RSRZ>2	OWAB(Å ²)	Q<0.9
1	A	237/258 (91%)	2.02	96 (40%) 1 1	27, 65, 126, 173	12 (5%)
2	B	300/308 (97%)	1.83	109 (36%) 1 1	23, 67, 126, 207	9 (3%)
All	All	537/566 (94%)	1.91	205 (38%) 1 1	23, 66, 126, 207	21 (3%)

All (205) RSRZ outliers are listed below:

Mol	Chain	Res	Type	RSRZ
1	A	1979[A]	MET	9.4
1	A	1878	CYS	9.1
1	A	2069	VAL	7.6
1	A	2060	LEU	6.1
2	B	203[A]	TYR	6.1
2	B	152	LEU	6.0
2	B	275	LEU	6.0
2	B	101	MET	5.9
1	A	2027	LEU	5.6
1	A	2030	PRO	5.5
1	A	2040	TRP	5.4
2	B	106	PRO	5.1
1	A	2039	LEU	5.1
1	A	2064	GLY	5.0
1	A	2037	TYR	5.0
2	B	316	LEU	4.8
1	A	2068	ASN	4.7
2	B	308	ILE	4.7
2	B	89	PHE	4.7
2	B	92	ILE	4.6
1	A	1963	LEU	4.6
2	B	54[A]	MET	4.6
2	B	170	SER	4.5
1	A	1833	GLY	4.5

Continued on next page...

Continued from previous page...

Mol	Chain	Res	Type	RSRZ
1	A	1898[A]	VAL	4.5
1	A	1834	ALA	4.4
1	A	1956	ILE	4.3
1	A	1860	VAL	4.3
2	B	130	VAL	4.3
2	B	172	PRO	4.3
2	B	124	ASP	4.3
1	A	2059	ILE	4.3
1	A	2061	THR	4.2
2	B	313	TYR	4.1
1	A	2026	LEU	4.1
1	A	2051	ILE	4.1
2	B	11	ILE	4.1
1	A	2028	SER	4.0
1	A	2033	THR	4.0
2	B	198	PHE	4.0
1	A	2063	TYR	3.9
2	B	122[A]	GLN	3.9
1	A	2067	TYR	3.9
2	B	193	HIS	3.9
2	B	111	ASP	3.9
1	A	1835	MET	3.9
1	A	1866	PHE	3.8
1	A	2065	ARG	3.8
1	A	2032	ILE	3.7
1	A	1840	TYR	3.7
1	A	1969	MET	3.6
2	B	97	LYS	3.6
2	B	204[A]	TYR	3.6
2	B	294	TYR	3.6
2	B	291	ILE	3.6
1	A	2048	TRP	3.5
2	B	279	TYR	3.5
2	B	77	LEU	3.5
1	A	2029	ASP	3.5
1	A	1862	VAL	3.4
2	B	20	TYR	3.4
2	B	38	ILE	3.4
2	B	22	PHE	3.4
2	B	183	PHE	3.4
1	A	2034	ILE	3.4
1	A	1875	ILE	3.3

Continued on next page...

Continued from previous page...

Mol	Chain	Res	Type	RSRZ
2	B	297	PHE	3.3
1	A	2049	ILE	3.3
1	A	2053[A]	SER	3.3
2	B	80	MET	3.3
2	B	173	ALA	3.2
2	B	142	SER	3.2
2	B	1	MET	3.2
1	A	2015	LEU	3.2
1	A	1980[A]	LYS	3.2
1	A	1886	THR	3.2
2	B	256	VAL	3.2
1	A	1958	PRO	3.2
1	A	2055	MET	3.2
2	B	214	PHE	3.1
1	A	2025	ILE	3.1
2	B	44[A]	ILE	3.1
2	B	108	ILE	3.1
2	B	288	VAL	3.1
2	B	36	ILE	3.0
2	B	126	ILE	3.0
1	A	1836	ASN	3.0
1	A	1988	LEU	3.0
1	A	2017[A]	THR	3.0
1	A	1872	THR	3.0
1	A	1953	ASN	3.0
2	B	174	HIS	3.0
2	B	68	TYR	2.9
2	B	19	GLN	2.9
1	A	1955	ALA	2.9
2	B	7	THR	2.9
2	B	96	PHE	2.9
1	A	1939	ALA	2.9
2	B	171	ASP	2.9
2	B	303	HIS	2.8
2	B	235	GLY	2.8
2	B	134	GLU	2.8
2	B	136	GLN	2.8
2	B	301	SER	2.8
1	A	2066	LYS	2.8
1	A	2056[A]	ARG	2.8
1	A	1906	SER	2.8
2	B	52	SER	2.8

Continued on next page...

Continued from previous page...

Mol	Chain	Res	Type	RSRZ
2	B	53	SER	2.8
1	A	1941	LEU	2.8
2	B	127	ARG	2.8
1	A	1933	ILE	2.8
2	B	50	ASP	2.8
2	B	188	ALA	2.8
1	A	1916	GLU	2.8
2	B	137	PHE	2.8
2	B	192	GLY	2.8
1	A	2031	THR	2.7
2	B	73	PRO	2.7
2	B	258	LYS	2.7
1	A	1998	ARG	2.7
1	A	1995	TRP	2.7
1	A	1951	PHE	2.7
1	A	2052	GLU	2.6
1	A	1841	ALA	2.6
2	B	189	ILE	2.6
2	B	39	GLY	2.6
2	B	81	MET	2.6
1	A	2044	THR	2.6
2	B	14	THR	2.6
2	B	131	ARG	2.6
2	B	254	ALA	2.6
2	B	93	VAL	2.6
1	A	1952	PRO	2.6
1	A	1931[A]	LYS	2.5
2	B	226	PHE	2.5
2	B	317	LEU	2.5
2	B	109	ASP	2.5
2	B	43	VAL	2.5
2	B	139	TYR	2.5
2	B	302	LEU	2.5
1	A	1861	THR	2.5
2	B	261	LEU	2.5
1	A	1927	GLU	2.5
1	A	1977	VAL	2.5
1	A	1904	ARG	2.5
2	B	29	PRO	2.5
2	B	87	ALA	2.5
2	B	216	ASN	2.5
1	A	1863	HIS	2.4

Continued on next page...

Continued from previous page...

Mol	Chain	Res	Type	RSRZ
1	A	2043	PHE	2.4
2	B	26	GLU	2.4
2	B	103	VAL	2.4
2	B	180	VAL	2.4
2	B	237	TYR	2.4
2	B	269	TYR	2.4
1	A	1892	LYS	2.3
1	A	2050	THR	2.3
1	A	2046	GLU	2.3
2	B	289	TRP	2.3
1	A	2010	LEU	2.3
1	A	1844	PHE	2.3
1	A	2036	SER	2.3
1	A	1909	ALA	2.3
1	A	1962	ARG	2.3
1	A	2001[A]	SER	2.3
2	B	233	PHE	2.3
2	B	128	LYS	2.3
2	B	110	GLU	2.3
2	B	270	TYR	2.3
1	A	1961[A]	LEU	2.3
2	B	64[A]	MET	2.2
1	A	1851	PHE	2.2
2	B	49	ALA	2.2
2	B	220	TYR	2.2
2	B	268	LEU	2.2
1	A	1837	SER	2.2
2	B	8	SER	2.2
2	B	88	LYS	2.2
1	A	1869	ASN	2.2
1	A	1864	LYS	2.1
2	B	151	GLU	2.1
1	A	1868	GLY	2.1
1	A	1944	LEU	2.1
2	B	84	ARG	2.1
1	A	1907	GLN	2.1
2	B	2	ASN	2.1
2	B	95	ASN	2.1
2	B	94	HIS	2.1
1	A	1920	LEU	2.1
1	A	1950	ASP	2.1
2	B	30	PHE	2.1

Continued on next page...

Continued from previous page...

Mol	Chain	Res	Type	RSRZ
1	A	2058	LEU	2.1
1	A	1870	VAL	2.1
1	A	1936	THR	2.0
2	B	123[A]	MET	2.0
2	B	213	ILE	2.0
2	B	280	SER	2.0
2	B	276	PRO	2.0
2	B	190	ARG	2.0
1	A	1917	VAL	2.0
1	A	1992	TYR	2.0
2	B	286	GLU	2.0
2	B	282	ILE	2.0
2	B	150	ASN	2.0

6.2 Non-standard residues in protein, DNA, RNA chains [i](#)

There are no non-standard protein/DNA/RNA residues in this entry.

6.3 Carbohydrates [i](#)

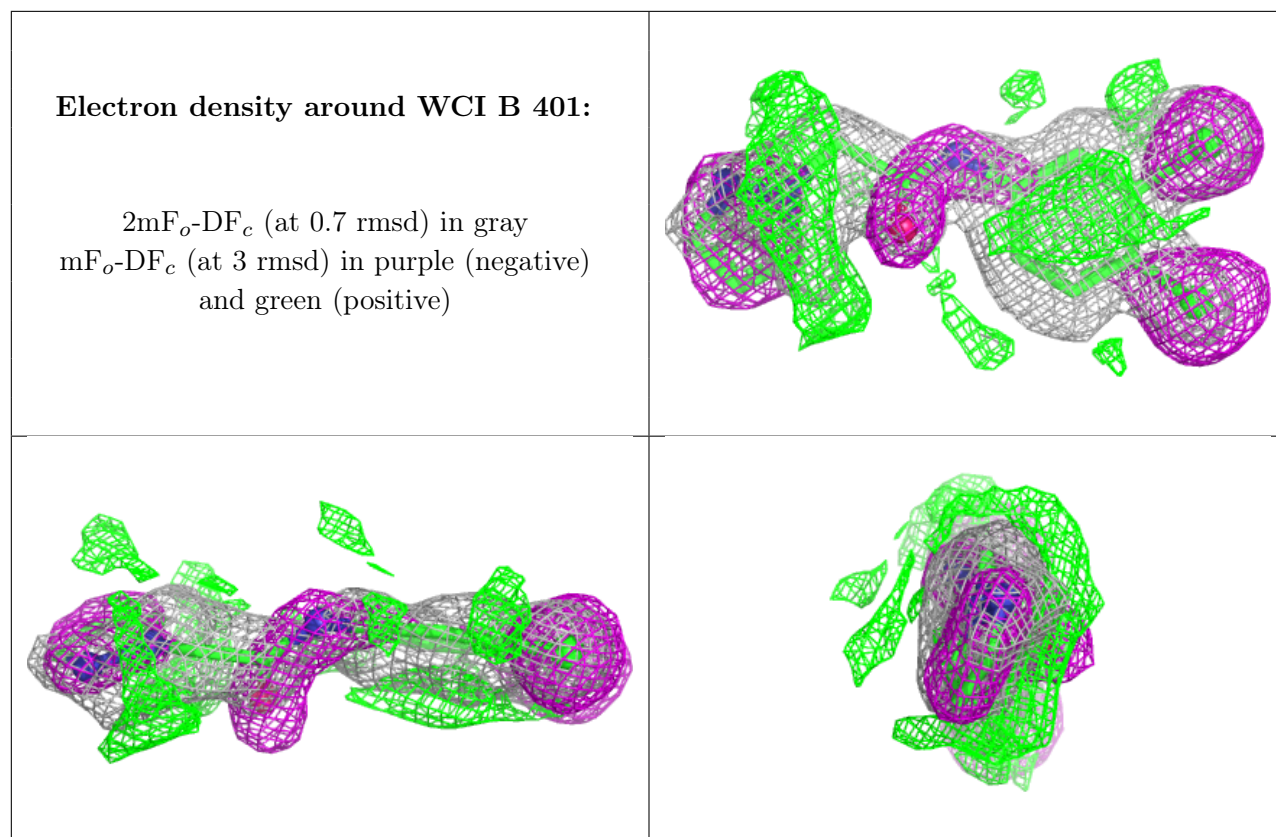
There are no monosaccharides in this entry.

6.4 Ligands [i](#)

In the following table, the Atoms column lists the number of modelled atoms in the group and the number defined in the chemical component dictionary. The B-factors column lists the minimum, median, 95th percentile and maximum values of B factors of atoms in the group. The column labelled 'Q< 0.9' lists the number of atoms with occupancy less than 0.9.

Mol	Type	Chain	Res	Atoms	RSCC	RSR	B-factors(\AA^2)	Q<0.9
3	WCI	B	401	17/17	0.69	0.24	20,20,20,20	17

The following is a graphical depiction of the model fit to experimental electron density of all instances of the Ligand of Interest. In addition, ligands with molecular weight > 250 and outliers as shown on the geometry validation Tables will also be included. Each fit is shown from different orientation to approximate a three-dimensional view.



6.5 Other polymers [i](#)

There are no such residues in this entry.