



Full wwPDB X-ray Structure Validation Report ⓘ

Nov 3, 2024 – 12:32 am GMT

PDB ID : 6FIG
Title : Crystal structure of the ANX1 ectodomain from Arabidopsis thaliana
Authors : Santiago, J.
Deposited on : 2018-01-18
Resolution : 1.48 Å(reported)

This is a Full wwPDB X-ray Structure Validation Report for a publicly released PDB entry.

We welcome your comments at validation@mail.wwpdb.org

A user guide is available at

<https://www.wwpdb.org/validation/2017/XrayValidationReportHelp>

with specific help available everywhere you see the ⓘ symbol.

The types of validation reports are described at

<http://www.wwpdb.org/validation/2017/FAQs#types>.

The following versions of software and data (see [references ⓘ](#)) were used in the production of this report:

MolProbity : 4.02b-467
Mogul : 1.8.4, CSD as541be (2020)
Xtriage (Phenix) : 1.13
EDS : 3.0
Percentile statistics : 20231227.v01 (using entries in the PDB archive December 27th 2023)
CCP4 : 9.0.003 (Gargrove)
Density-Fitness : 1.0.11
Ideal geometry (proteins) : Engh & Huber (2001)
Ideal geometry (DNA, RNA) : Parkinson et al. (1996)
Validation Pipeline (wwPDB-VP) : 2.39

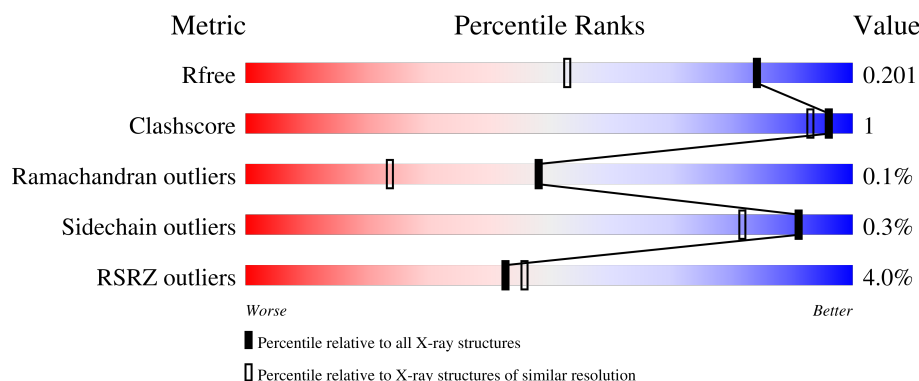
1 Overall quality at a glance

The following experimental techniques were used to determine the structure:

X-RAY DIFFRACTION

The reported resolution of this entry is 1.48 Å.

Percentile scores (ranging between 0-100) for global validation metrics of the entry are shown in the following graphic. The table shows the number of entries on which the scores are based.



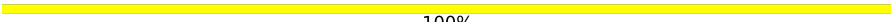

Metric	Whole archive (#Entries)	Similar resolution (#Entries, resolution range(Å))
R_{free}	164625	6131 (1.50-1.46)
Clashscore	180529	6623 (1.50-1.46)
Ramachandran outliers	177936	6521 (1.50-1.46)
Sidechain outliers	177891	6518 (1.50-1.46)
RSRZ outliers	164620	6132 (1.50-1.46)

The table below summarises the geometric issues observed across the polymeric chains and their fit to the electron density. The red, orange, yellow and green segments of the lower bar indicate the fraction of residues that contain outliers for ≥ 3 , 2, 1 and 0 types of geometric quality criteria respectively. A grey segment represents the fraction of residues that are not modelled. The numeric value for each fraction is indicated below the corresponding segment, with a dot representing fractions $\leq 5\%$. The upper red bar (where present) indicates the fraction of residues that have poor fit to the electron density. The numeric value is given above the bar.

Mol	Chain	Length	Quality of chain
1	A	414	<div> <div>4%</div> <div> <div></div> <div>92%</div> <div>7%</div> </div> </div>
1	B	414	<div> <div>3%</div> <div> <div></div> <div>90%</div> <div>7%</div> </div> </div>
2	C	2	<div> <div></div> <div>100%</div> </div>
2	D	2	<div> <div>50%</div> <div>50%</div> </div>
2	F	2	<div> <div>50%</div> <div>50%</div> </div>

Continued on next page...

Continued from previous page...

Mol	Chain	Length	Quality of chain
2	G	2	 100%
3	E	3	 33%67%

2 Entry composition

There are 8 unique types of molecules in this entry. The entry contains 7058 atoms, of which 0 are hydrogens and 0 are deuteriums.

In the tables below, the ZeroOcc column contains the number of atoms modelled with zero occupancy, the AltConf column contains the number of residues with at least one atom in alternate conformation and the Trace column contains the number of residues modelled with at most 2 atoms.

- Molecule 1 is a protein called Receptor-like protein kinase ANXUR1.

Mol	Chain	Residues	Atoms					ZeroOcc	AltConf	Trace
1	A	386	Total	C	N	O	S	0	6	0
			3054	1948	495	597	14			
1	B	385	Total	C	N	O	S	0	12	0
			3076	1966	495	600	15			

There are 20 discrepancies between the modelled and reference sequences:

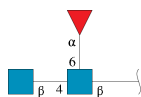
Chain	Residue	Modelled	Actual	Comment	Reference
A	430	LEU	-	expression tag	UNP Q9SR05
A	431	GLU	-	expression tag	UNP Q9SR05
A	432	GLY	-	expression tag	UNP Q9SR05
A	433	SER	-	expression tag	UNP Q9SR05
A	434	GLU	-	expression tag	UNP Q9SR05
A	435	ASN	-	expression tag	UNP Q9SR05
A	436	LEU	-	expression tag	UNP Q9SR05
A	437	TYR	-	expression tag	UNP Q9SR05
A	438	PHE	-	expression tag	UNP Q9SR05
A	439	GLN	-	expression tag	UNP Q9SR05
B	430	LEU	-	expression tag	UNP Q9SR05
B	431	GLU	-	expression tag	UNP Q9SR05
B	432	GLY	-	expression tag	UNP Q9SR05
B	433	SER	-	expression tag	UNP Q9SR05
B	434	GLU	-	expression tag	UNP Q9SR05
B	435	ASN	-	expression tag	UNP Q9SR05
B	436	LEU	-	expression tag	UNP Q9SR05
B	437	TYR	-	expression tag	UNP Q9SR05
B	438	PHE	-	expression tag	UNP Q9SR05
B	439	GLN	-	expression tag	UNP Q9SR05

- Molecule 2 is an oligosaccharide called 2-acetamido-2-deoxy-beta-D-glucopyranose-(1-4)-2-acetamido-2-deoxy-beta-D-glucopyranose.



Mol	Chain	Residues	Atoms				ZeroOcc	AltConf	Trace
2	C	2	Total	C	N	O	0	0	0
			28	16	2	10			
2	D	2	Total	C	N	O	0	0	0
			28	16	2	10			
2	F	2	Total	C	N	O	0	0	0
			28	16	2	10			
2	G	2	Total	C	N	O	0	0	0
			28	16	2	10			

- Molecule 3 is an oligosaccharide called 2-acetamido-2-deoxy-beta-D-glucopyranose-(1-4)-[alpha-L-fucopyranose-(1-6)]2-acetamido-2-deoxy-beta-D-glucopyranose.

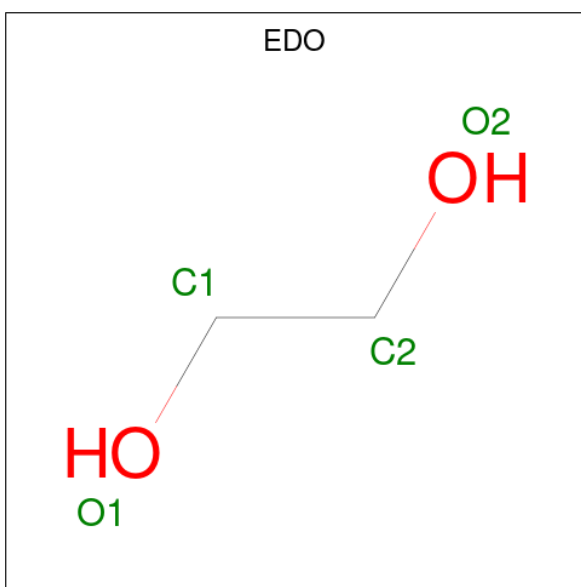


Mol	Chain	Residues	Atoms				ZeroOcc	AltConf	Trace
3	E	3	Total	C	N	O	0	0	0
			38	22	2	14			

- Molecule 4 is CALCIUM ION (three-letter code: CA) (formula: Ca).

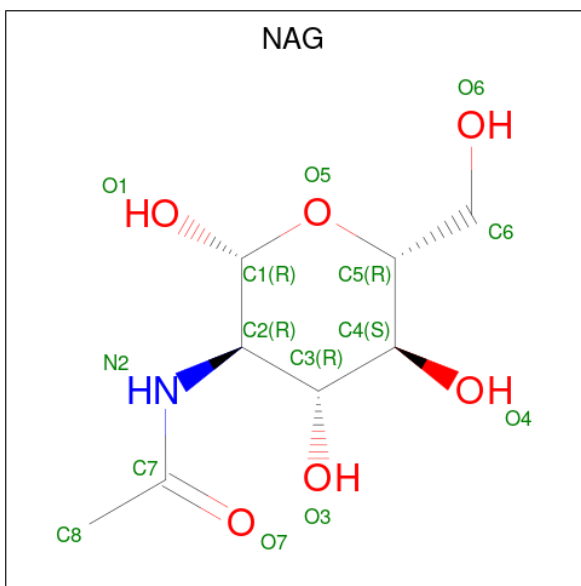
Mol	Chain	Residues	Atoms		ZeroOcc	AltConf
4	A	2	Total	Ca	0	0
			2	2		
4	B	2	Total	Ca	0	0
			2	2		

- Molecule 5 is 1,2-ETHANEDIOL (three-letter code: EDO) (formula: C₂H₆O₂).



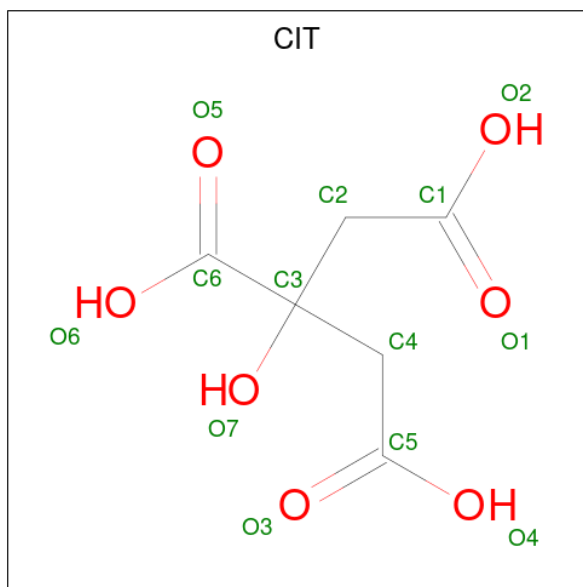
Mol	Chain	Residues	Atoms			ZeroOcc	AltConf
5	A	1	Total	C	O	0	0
			4	2	2		

- Molecule 6 is 2-acetamido-2-deoxy-beta-D-glucopyranose (three-letter code: NAG) (formula: $C_8H_{15}NO_6$).



Mol	Chain	Residues	Atoms				ZeroOcc	AltConf
6	B	1	Total	C	N	O	0	0
			14	8	1	5		

- Molecule 7 is CITRIC ACID (three-letter code: CIT) (formula: $C_6H_8O_7$).



Mol	Chain	Residues	Atoms			ZeroOcc	AltConf
7	B	1	Total	C	O	0	0
			13	6	7		

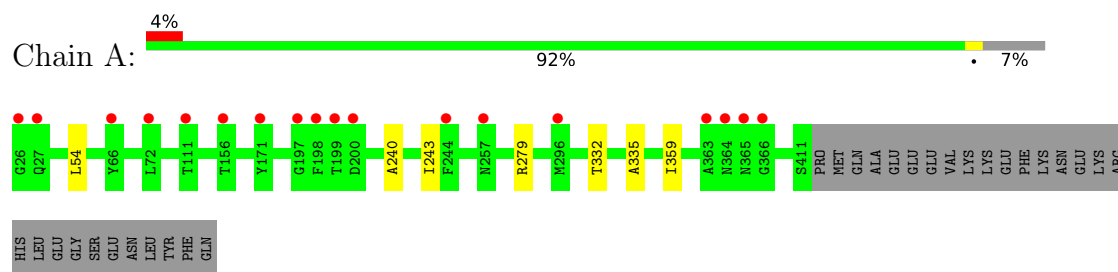
- Molecule 8 is water.

Mol	Chain	Residues	Atoms		ZeroOcc	AltConf
8	A	340	Total	O	0	0
			340	340		
8	B	403	Total	O	0	0
			403	403		

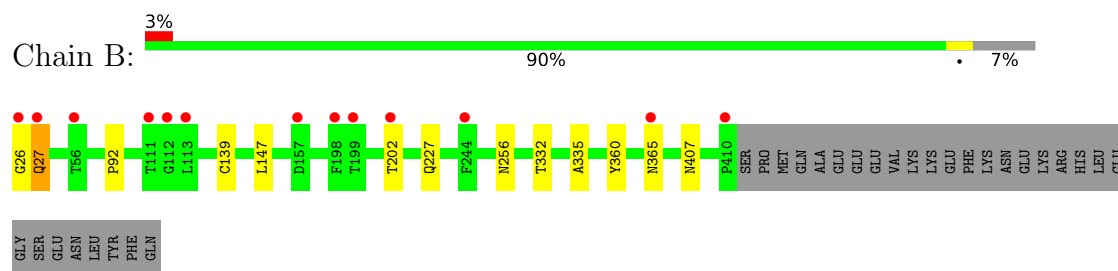
3 Residue-property plots [i](#)

These plots are drawn for all protein, RNA, DNA and oligosaccharide chains in the entry. The first graphic for a chain summarises the proportions of the various outlier classes displayed in the second graphic. The second graphic shows the sequence view annotated by issues in geometry and electron density. Residues are color-coded according to the number of geometric quality criteria for which they contain at least one outlier: green = 0, yellow = 1, orange = 2 and red = 3 or more. A red dot above a residue indicates a poor fit to the electron density ($RSRZ > 2$). Stretches of 2 or more consecutive residues without any outlier are shown as a green connector. Residues present in the sample, but not in the model, are shown in grey.

- Molecule 1: Receptor-like protein kinase ANXUR1



- Molecule 1: Receptor-like protein kinase ANXUR1



- Molecule 2: 2-acetamido-2-deoxy-beta-D-glucopyranose-(1-4)-2-acetamido-2-deoxy-beta-D-glucopyranose



- Molecule 2: 2-acetamido-2-deoxy-beta-D-glucopyranose-(1-4)-2-acetamido-2-deoxy-beta-D-glucopyranose




- Molecule 2: 2-acetamido-2-deoxy-beta-D-glucopyranose-(1-4)-2-acetamido-2-deoxy-beta-D-glucopyranose

Chain F:  50% 50%


MAG1
MAG2

- Molecule 2: 2-acetamido-2-deoxy-beta-D-glucopyranose-(1-4)-2-acetamido-2-deoxy-beta-D-glucopyranose

Chain G:  100%

MAG1
MAG2

- Molecule 3: 2-acetamido-2-deoxy-beta-D-glucopyranose-(1-4)-[alpha-L-fucopyranose-(1-6)]2-acetamido-2-deoxy-beta-D-glucopyranose

Chain E:  33% 67%

MAG1
MAG2
FUC3

4 Data and refinement statistics

Property	Value	Source
Space group	P 1	Depositor
Cell constants a, b, c, α , β , γ	53.99Å 68.75Å 70.05Å 88.54° 74.93° 71.74°	Depositor
Resolution (Å)	47.27 – 1.48 47.27 – 1.48	Depositor EDS
% Data completeness (in resolution range)	98.5 (47.27-1.48) 98.5 (47.27-1.48)	Depositor EDS
R_{merge}	(Not available)	Depositor
R_{sym}	0.06	Depositor
$\langle I/\sigma(I) \rangle$ ¹	1.69 (at 1.48Å)	Xtriage
Refinement program	REFMAC 5.8.0189	Depositor
R, R_{free}	0.171 , 0.192 0.181 , 0.201	Depositor DCC
R_{free} test set	7616 reflections (4.96%)	wwPDB-VP
Wilson B-factor (Å ²)	21.8	Xtriage
Anisotropy	0.199	Xtriage
Bulk solvent k_{sol} (e/Å ³), B_{sol} (Å ²)	0.34 , 31.7	EDS
L-test for twinning ²	$\langle L \rangle = 0.50$, $\langle L^2 \rangle = 0.33$	Xtriage
Estimated twinning fraction	0.009 for -h,-l,-k	Xtriage
F_o, F_c correlation	0.97	EDS
Total number of atoms	7058	wwPDB-VP
Average B, all atoms (Å ²)	34.0	wwPDB-VP

Xtriage's analysis on translational NCS is as follows: *The largest off-origin peak in the Patterson function is 5.29% of the height of the origin peak. No significant pseudotranslation is detected.*

¹Intensities estimated from amplitudes.

²Theoretical values of $\langle |L| \rangle$, $\langle L^2 \rangle$ for acentric reflections are 0.5, 0.333 respectively for untwinned datasets, and 0.375, 0.2 for perfectly twinned datasets.

5 Model quality

5.1 Standard geometry

Bond lengths and bond angles in the following residue types are not validated in this section: CA, EDO, FUC, CIT, NAG

The Z score for a bond length (or angle) is the number of standard deviations the observed value is removed from the expected value. A bond length (or angle) with $|Z| > 5$ is considered an outlier worth inspection. RMSZ is the root-mean-square of all Z scores of the bond lengths (or angles).

Mol	Chain	Bond lengths		Bond angles	
		RMSZ	# Z >5	RMSZ	# Z >5
1	A	0.49	0/3145	0.71	0/4277
1	B	0.48	0/3181	0.72	0/4328
All	All	0.49	0/6326	0.71	0/8605

There are no bond length outliers.

There are no bond angle outliers.

There are no chirality outliers.

There are no planarity outliers.

5.2 Too-close contacts

In the following table, the Non-H and H(model) columns list the number of non-hydrogen atoms and hydrogen atoms in the chain respectively. The H(added) column lists the number of hydrogen atoms added and optimized by MolProbity. The Clashes column lists the number of clashes within the asymmetric unit, whereas Symm-Clashes lists symmetry-related clashes.

Mol	Chain	Non-H	H(model)	H(added)	Clashes	Symm-Clashes
1	A	3054	0	2979	4	0
1	B	3076	0	3018	8	0
2	C	28	0	25	0	0
2	D	28	0	25	0	0
2	F	28	0	25	1	0
2	G	28	0	25	0	0
3	E	38	0	34	0	0
4	A	2	0	0	0	0
4	B	2	0	0	0	0
5	A	4	0	6	0	0
6	B	14	0	13	0	0

Continued on next page...

Continued from previous page...

Mol	Chain	Non-H	H(model)	H(added)	Clashes	Symm-Clashes
7	B	13	0	5	0	0
8	A	340	0	0	1	0
8	B	403	0	0	3	0
All	All	7058	0	6155	12	0

The all-atom clashscore is defined as the number of clashes found per 1000 atoms (including hydrogen atoms). The all-atom clashscore for this structure is 1.

All (12) close contacts within the same asymmetric unit are listed below, sorted by their clash magnitude.

Atom-1	Atom-2	Interatomic distance (Å)	Clash overlap (Å)
1:B:407:ASN:HD22	2:F:1:NAG:H61	1.62	0.65
1:B:27:GLN:NE2	8:B:601:HOH:O	2.32	0.61
1:B:26:GLY:HA3	1:B:92:PRO:HB2	1.83	0.59
1:B:139:CYS:SG	1:B:147:LEU:HG	2.49	0.53
1:B:332:THR:HG23	1:B:335:ALA:HB3	1.93	0.50
1:A:240:ALA:HA	1:A:243:ILE:HD12	1.96	0.48
1:A:332:THR:HG23	1:A:335:ALA:HB3	1.98	0.45
1:A:243:ILE:HD11	1:A:279:ARG:NE	2.32	0.44
1:B:360:TYR:O	1:B:365:ASN:ND2	2.47	0.42
1:B:227[A]:GLN:NE2	8:B:602:HOH:O	2.42	0.42
1:B:256[A]:ASN:ND2	8:B:605:HOH:O	2.51	0.42
1:A:54:LEU:HD21	8:A:831:HOH:O	2.21	0.40

There are no symmetry-related clashes.

5.3 Torsion angles [i](#)

5.3.1 Protein backbone [i](#)

In the following table, the Percentiles column shows the percent Ramachandran outliers of the chain as a percentile score with respect to all X-ray entries followed by that with respect to entries of similar resolution.

The Analysed column shows the number of residues for which the backbone conformation was analysed, and the total number of residues.

Mol	Chain	Analysed	Favoured	Allowed	Outliers	Percentiles	
1	A	390/414 (94%)	380 (97%)	10 (3%)	0	100	100
1	B	395/414 (95%)	382 (97%)	12 (3%)	1 (0%)	37	17

Continued on next page...

Continued from previous page...

Mol	Chain	Analysed	Favoured	Allowed	Outliers	Percentiles
All	All	785/828 (95%)	762 (97%)	22 (3%)	1 (0%)	48 24

All (1) Ramachandran outliers are listed below:

Mol	Chain	Res	Type
1	B	27	GLN

5.3.2 Protein sidechains ⓘ

In the following table, the Percentiles column shows the percent sidechain outliers of the chain as a percentile score with respect to all X-ray entries followed by that with respect to entries of similar resolution.

The Analysed column shows the number of residues for which the sidechain conformation was analysed, and the total number of residues.

Mol	Chain	Analysed	Rotameric	Outliers	Percentiles
1	A	336/356 (94%)	335 (100%)	1 (0%)	91 82
1	B	341/356 (96%)	340 (100%)	1 (0%)	91 82
All	All	677/712 (95%)	675 (100%)	2 (0%)	91 82

All (2) residues with a non-rotameric sidechain are listed below:

Mol	Chain	Res	Type
1	A	359	ILE
1	B	202	THR

Sometimes sidechains can be flipped to improve hydrogen bonding and reduce clashes. All (1) such sidechains are listed below:

Mol	Chain	Res	Type
1	A	334	GLN

5.3.3 RNA ⓘ

There are no RNA molecules in this entry.

5.4 Non-standard residues in protein, DNA, RNA chains ⓘ

There are no non-standard protein/DNA/RNA residues in this entry.

5.5 Carbohydrates ⓘ

11 monosaccharides are modelled in this entry.

In the following table, the Counts columns list the number of bonds (or angles) for which Mogul statistics could be retrieved, the number of bonds (or angles) that are observed in the model and the number of bonds (or angles) that are defined in the Chemical Component Dictionary. The Link column lists molecule types, if any, to which the group is linked. The Z score for a bond length (or angle) is the number of standard deviations the observed value is removed from the expected value. A bond length (or angle) with $|Z| > 2$ is considered an outlier worth inspection. RMSZ is the root-mean-square of all Z scores of the bond lengths (or angles).

Mol	Type	Chain	Res	Link	Bond lengths			Bond angles		
					Counts	RMSZ	# $ Z > 2$	Counts	RMSZ	# $ Z > 2$
2	NAG	C	1	2,1	14,14,15	0.34	0	17,19,21	0.82	1 (5%)
2	NAG	C	2	2	14,14,15	0.35	0	17,19,21	1.28	3 (17%)
2	NAG	D	1	2,1	14,14,15	0.23	0	17,19,21	1.10	1 (5%)
2	NAG	D	2	2	14,14,15	0.37	0	17,19,21	0.71	0
3	NAG	E	1	1,3	14,14,15	0.50	0	17,19,21	0.94	0
3	NAG	E	2	3	14,14,15	0.33	0	17,19,21	1.47	3 (17%)
3	FUC	E	3	3	10,10,11	0.43	0	14,14,16	0.95	1 (7%)
2	NAG	F	1	2,1	14,14,15	0.47	0	17,19,21	2.34	3 (17%)
2	NAG	F	2	2	14,14,15	0.24	0	17,19,21	1.12	1 (5%)
2	NAG	G	1	2,1	14,14,15	0.32	0	17,19,21	1.14	2 (11%)
2	NAG	G	2	2	14,14,15	0.43	0	17,19,21	0.93	1 (5%)

In the following table, the Chirals column lists the number of chiral outliers, the number of chiral centers analysed, the number of these observed in the model and the number defined in the Chemical Component Dictionary. Similar counts are reported in the Torsion and Rings columns. '-' means no outliers of that kind were identified.

Mol	Type	Chain	Res	Link	Chirals	Torsions	Rings
2	NAG	C	1	2,1	-	0/6/23/26	0/1/1/1
2	NAG	C	2	2	-	1/6/23/26	0/1/1/1
2	NAG	D	1	2,1	-	0/6/23/26	0/1/1/1
2	NAG	D	2	2	-	2/6/23/26	0/1/1/1
3	NAG	E	1	1,3	-	0/6/23/26	0/1/1/1
3	NAG	E	2	3	-	0/6/23/26	0/1/1/1

Continued on next page...

Continued from previous page...

Mol	Type	Chain	Res	Link	Chirals	Torsions	Rings
3	FUC	E	3	3	-	-	0/1/1/1
2	NAG	F	1	2,1	-	2/6/23/26	0/1/1/1
2	NAG	F	2	2	-	2/6/23/26	0/1/1/1
2	NAG	G	1	2,1	-	0/6/23/26	0/1/1/1
2	NAG	G	2	2	-	0/6/23/26	0/1/1/1

There are no bond length outliers.

All (16) bond angle outliers are listed below:

Mol	Chain	Res	Type	Atoms	Z	Observed(°)	Ideal(°)
2	F	1	NAG	C1-O5-C5	8.26	123.39	112.19
2	F	1	NAG	O5-C5-C6	-3.41	101.86	107.20
3	E	2	NAG	O5-C5-C6	3.20	112.22	107.20
2	C	2	NAG	C1-O5-C5	2.90	116.13	112.19
2	F	1	NAG	C3-C4-C5	2.85	115.32	110.24
3	E	2	NAG	C1-O5-C5	2.81	116.00	112.19
3	E	2	NAG	C6-C5-C4	-2.79	106.46	113.00
2	G	1	NAG	C1-O5-C5	2.72	115.88	112.19
2	D	1	NAG	C1-C2-N2	-2.69	105.90	110.49
3	E	3	FUC	O5-C1-C2	-2.64	106.70	110.77
2	G	1	NAG	O5-C1-C2	-2.45	107.42	111.29
2	F	2	NAG	C1-O5-C5	2.42	115.47	112.19
2	G	2	NAG	C1-O5-C5	2.33	115.35	112.19
2	C	2	NAG	C4-C3-C2	2.26	114.33	111.02
2	C	2	NAG	C3-C4-C5	2.22	114.20	110.24
2	C	1	NAG	C1-O5-C5	2.15	115.11	112.19

There are no chirality outliers.

All (7) torsion outliers are listed below:

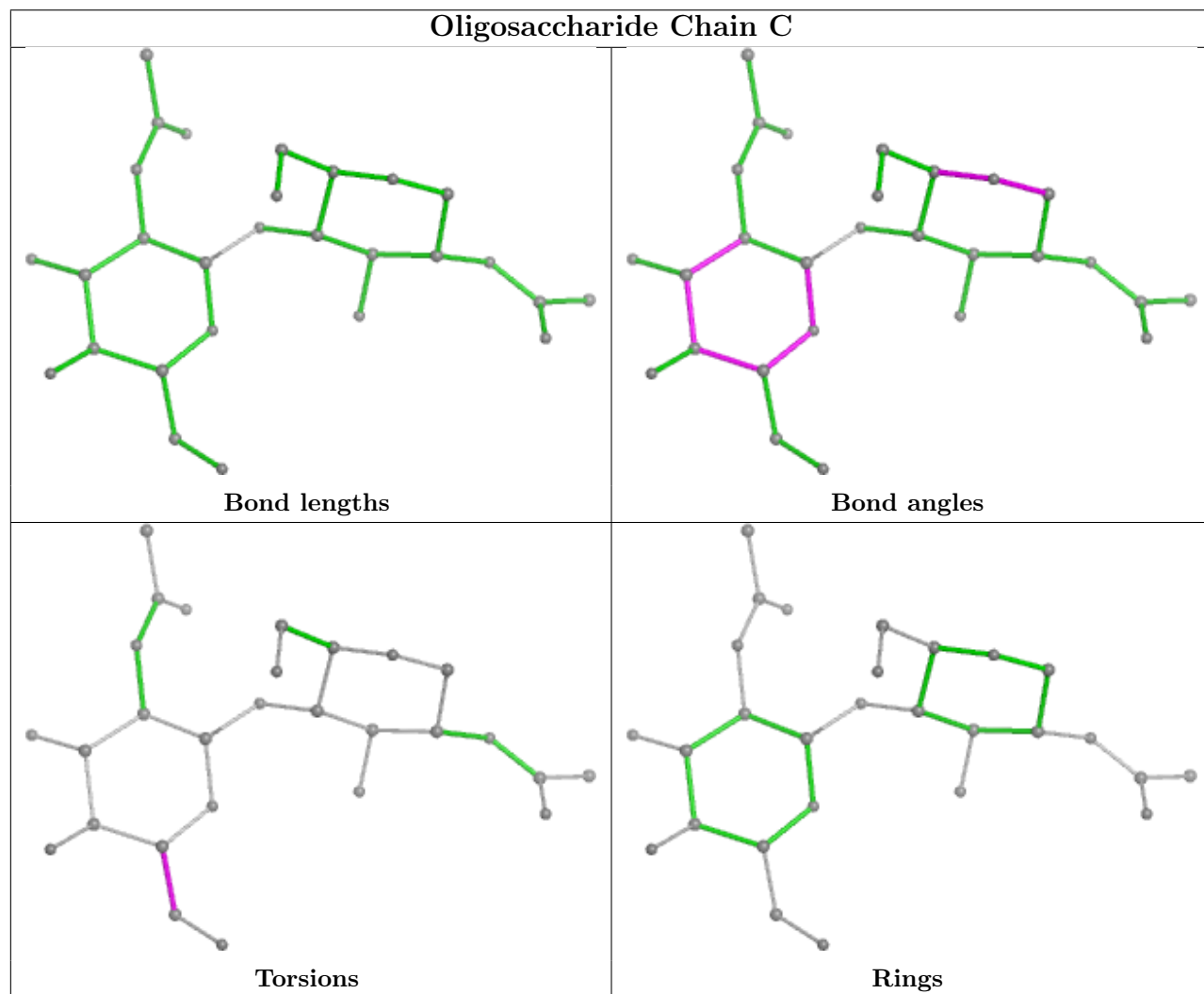
Mol	Chain	Res	Type	Atoms
2	F	1	NAG	O5-C5-C6-O6
2	F	1	NAG	C4-C5-C6-O6
2	D	2	NAG	O5-C5-C6-O6
2	D	2	NAG	C4-C5-C6-O6
2	F	2	NAG	C4-C5-C6-O6
2	C	2	NAG	C4-C5-C6-O6
2	F	2	NAG	O5-C5-C6-O6

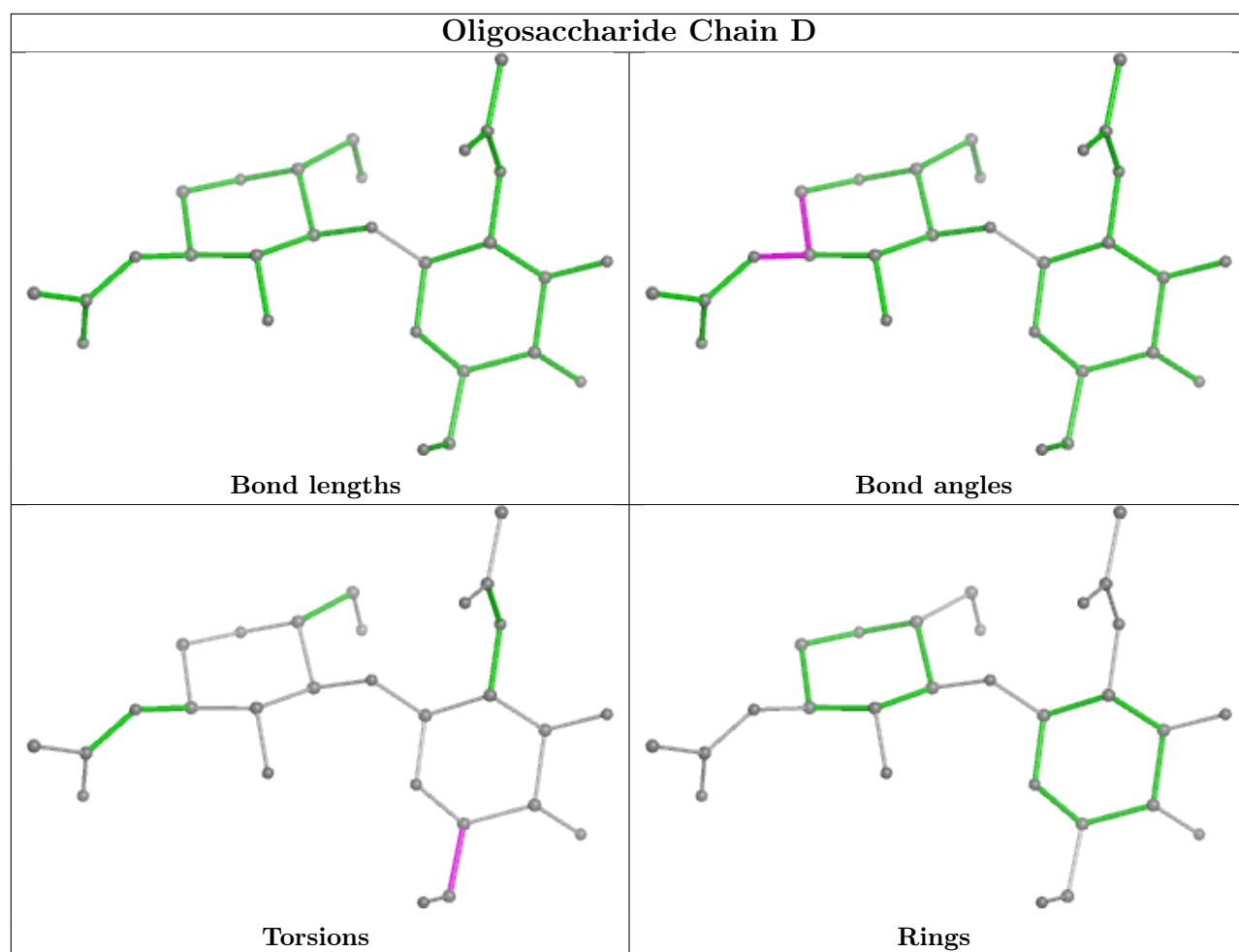
There are no ring outliers.

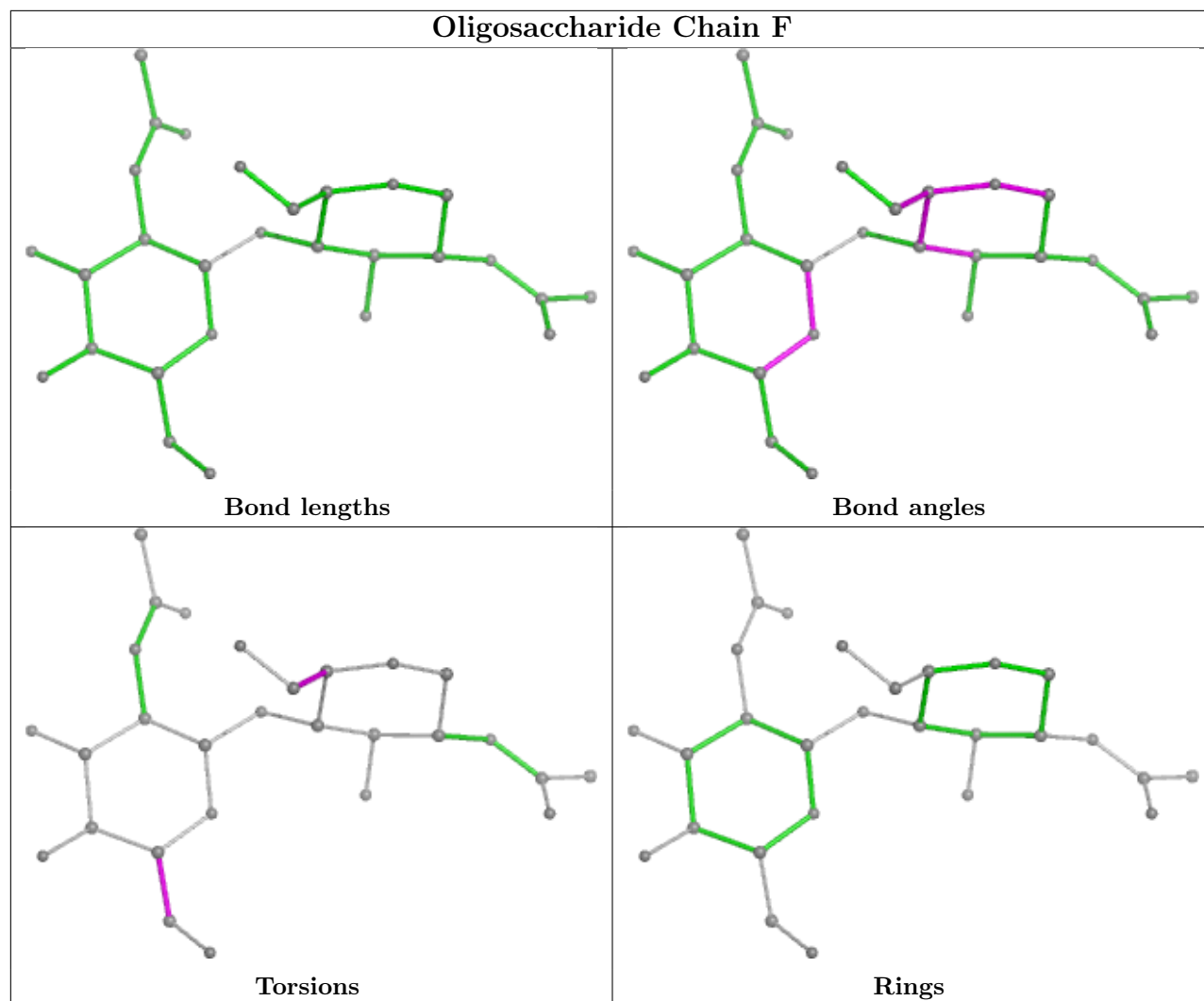
1 monomer is involved in 1 short contact:

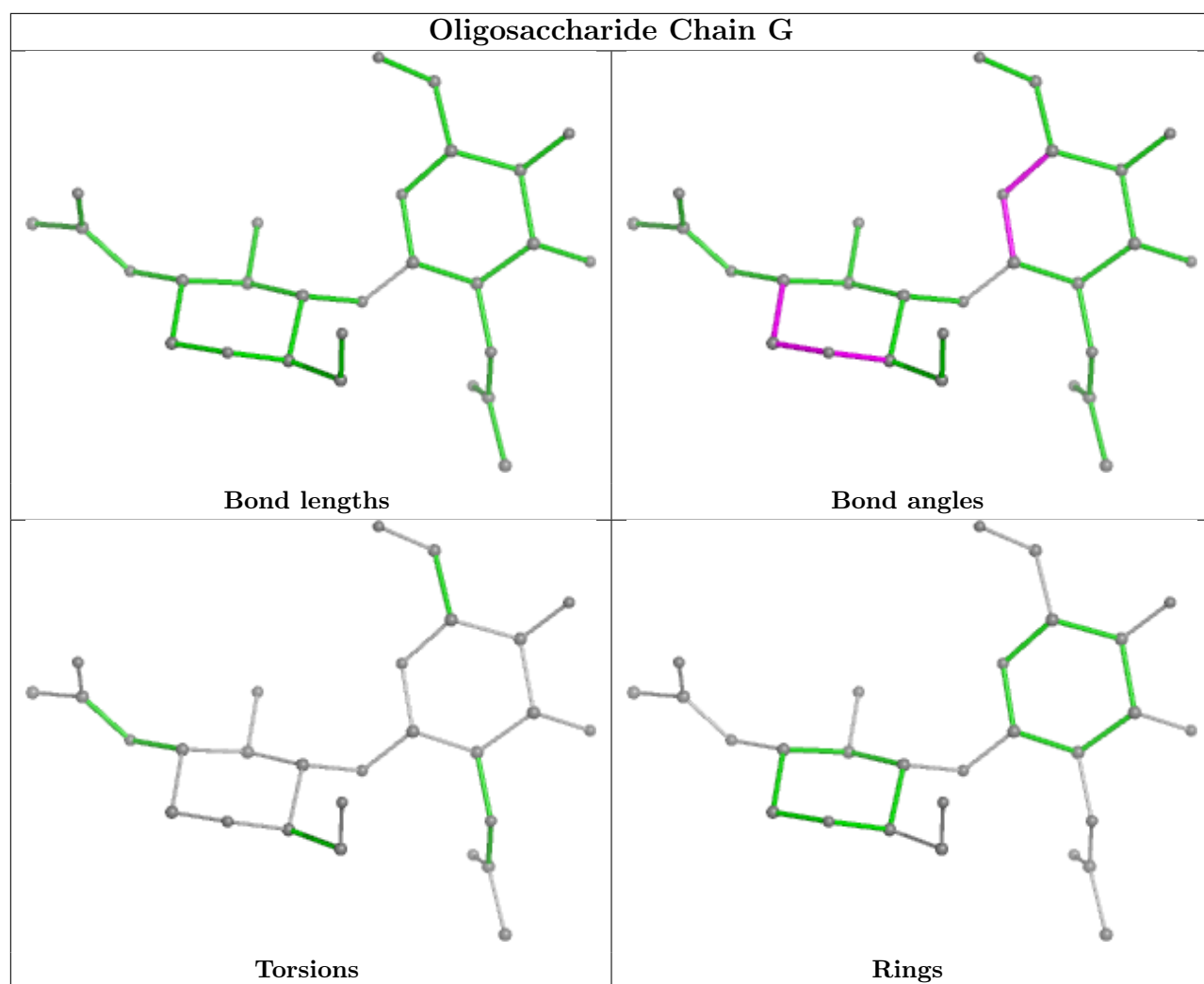
Mol	Chain	Res	Type	Clashes	Symm-Clashes
2	F	1	NAG	1	0

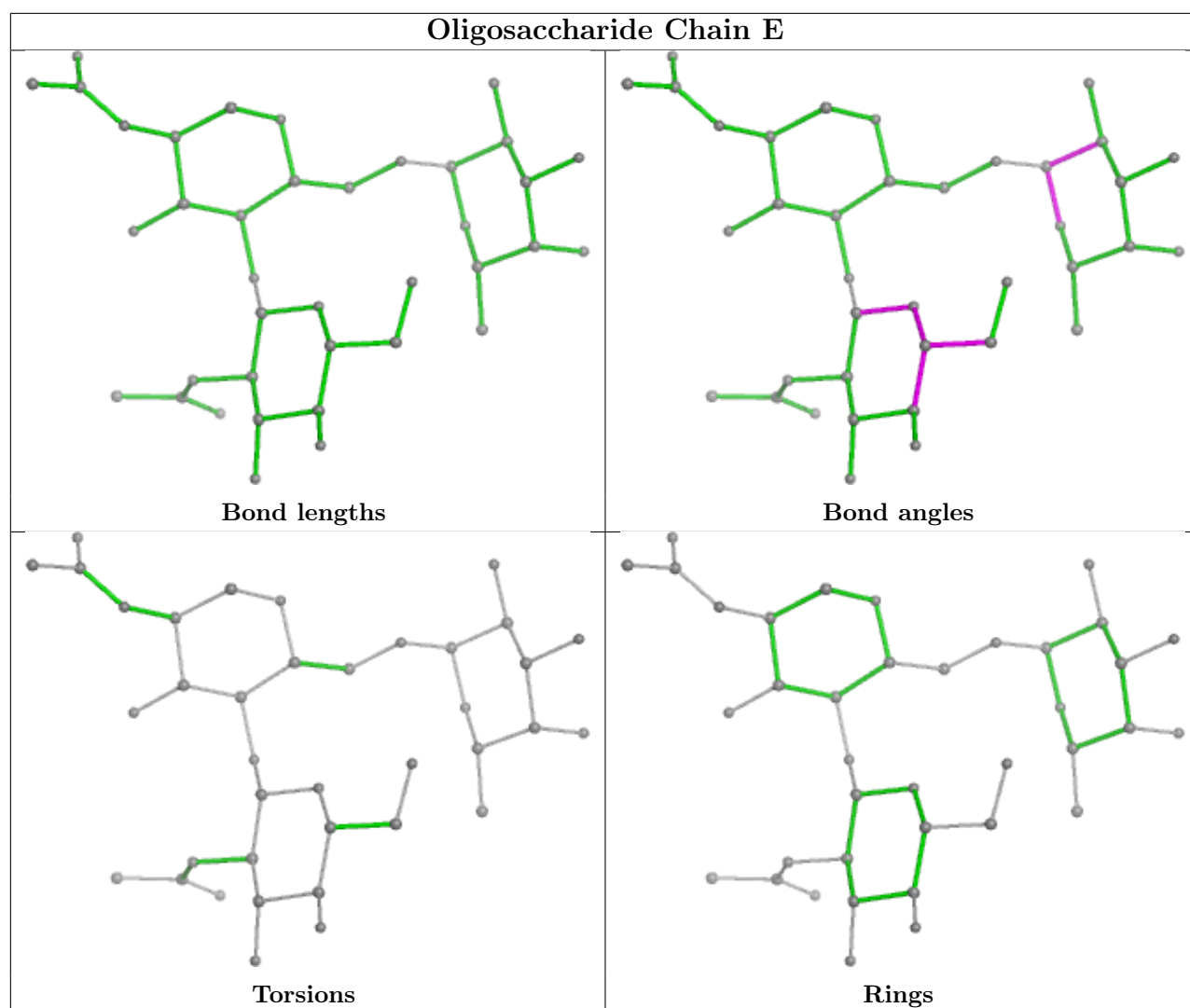
The following is a two-dimensional graphical depiction of Mogul quality analysis of bond lengths, bond angles, torsion angles, and ring geometry for oligosaccharide.











5.6 Ligand geometry [i](#)

Of 7 ligands modelled in this entry, 4 are monoatomic - leaving 3 for Mogul analysis.

In the following table, the Counts columns list the number of bonds (or angles) for which Mogul statistics could be retrieved, the number of bonds (or angles) that are observed in the model and the number of bonds (or angles) that are defined in the Chemical Component Dictionary. The Link column lists molecule types, if any, to which the group is linked. The Z score for a bond length (or angle) is the number of standard deviations the observed value is removed from the expected value. A bond length (or angle) with $|Z| > 2$ is considered an outlier worth inspection. RMSZ is the root-mean-square of all Z scores of the bond lengths (or angles).

Mol	Type	Chain	Res	Link	Bond lengths			Bond angles		
					Counts	RMSZ	$\# Z > 2$	Counts	RMSZ	$\# Z > 2$
6	NAG	B	507	1	14,14,15	0.36	0	17,19,21	0.95	0
7	CIT	B	508	-	12,12,12	0.99	0	17,17,17	1.64	3 (17%)
5	EDO	A	510	-	3,3,3	0.39	0	2,2,2	0.59	0

In the following table, the Chirals column lists the number of chiral outliers, the number of chiral centers analysed, the number of these observed in the model and the number defined in the Chemical Component Dictionary. Similar counts are reported in the Torsion and Rings columns. '-' means no outliers of that kind were identified.

Mol	Type	Chain	Res	Link	Chirals	Torsions	Rings
6	NAG	B	507	1	-	0/6/23/26	0/1/1/1
7	CIT	B	508	-	-	6/16/16/16	-
5	EDO	A	510	-	-	0/1/1/1	-

There are no bond length outliers.

All (3) bond angle outliers are listed below:

Mol	Chain	Res	Type	Atoms	Z	Observed(°)	Ideal(°)
7	B	508	CIT	O6-C6-C3	4.19	120.33	113.05
7	B	508	CIT	C4-C3-C2	2.76	116.36	109.16
7	B	508	CIT	O5-C6-C3	-2.57	118.61	122.25

There are no chirality outliers.

All (6) torsion outliers are listed below:

Mol	Chain	Res	Type	Atoms
7	B	508	CIT	O7-C3-C6-O5
7	B	508	CIT	O7-C3-C6-O6
7	B	508	CIT	C4-C3-C6-O5
7	B	508	CIT	C4-C3-C6-O6
7	B	508	CIT	O7-C3-C4-C5
7	B	508	CIT	C1-C2-C3-C4

There are no ring outliers.

No monomer is involved in short contacts.

5.7 Other polymers [i](#)

There are no such residues in this entry.

5.8 Polymer linkage issues [i](#)

There are no chain breaks in this entry.

6 Fit of model and data

6.1 Protein, DNA and RNA chains

In the following table, the column labelled ‘#RSRZ > 2’ contains the number (and percentage) of RSRZ outliers, followed by percent RSRZ outliers for the chain as percentile scores relative to all X-ray entries and entries of similar resolution. The OWAB column contains the minimum, median, 95th percentile and maximum values of the occupancy-weighted average B-factor per residue. The column labelled ‘Q < 0.9’ lists the number of (and percentage) of residues with an average occupancy less than 0.9.

Mol	Chain	Analysed	<RSRZ>	#RSRZ>2		OWAB(Å ²)	Q<0.9
1	A	386/414 (93%)	0.14	18 (4%)	37 39	15, 31, 54, 80	6 (1%)
1	B	385/414 (92%)	0.10	13 (3%)	48 51	12, 30, 48, 72	12 (3%)
All	All	771/828 (93%)	0.12	31 (4%)	43 46	12, 30, 52, 80	18 (2%)

All (31) RSRZ outliers are listed below:

Mol	Chain	Res	Type	RSRZ
1	B	112	GLY	5.8
1	B	199	THR	5.5
1	B	27	GLN	4.9
1	B	410	PRO	4.6
1	B	26	GLY	4.4
1	A	198	PHE	3.7
1	A	365	ASN	3.6
1	A	26	GLY	3.6
1	B	111	THR	3.6
1	A	197	GLY	3.2
1	B	365	ASN	3.1
1	A	199	THR	3.0
1	A	171	TYR	2.9
1	A	111	THR	2.8
1	A	72	LEU	2.8
1	B	198	PHE	2.8
1	A	363	ALA	2.8
1	B	113	LEU	2.7
1	A	244	PHE	2.6
1	B	244	PHE	2.6
1	A	27	GLN	2.5
1	A	366	GLY	2.4
1	A	364	ASN	2.4
1	B	202	THR	2.3

Continued on next page...

Continued from previous page...

Mol	Chain	Res	Type	RSRZ
1	A	66	TYR	2.2
1	A	257	ASN	2.2
1	A	156	THR	2.1
1	B	56	THR	2.1
1	B	157	ASP	2.1
1	A	296	MET	2.1
1	A	200	ASP	2.0

6.2 Non-standard residues in protein, DNA, RNA chains [i](#)

There are no non-standard protein/DNA/RNA residues in this entry.

6.3 Carbohydrates [i](#)

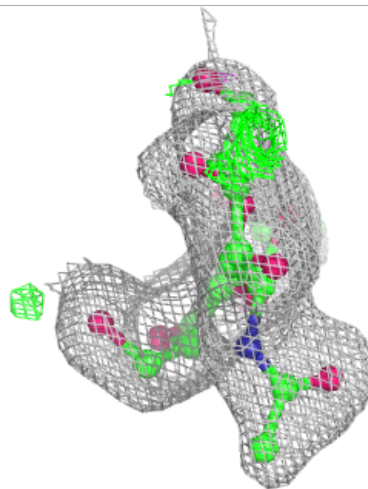
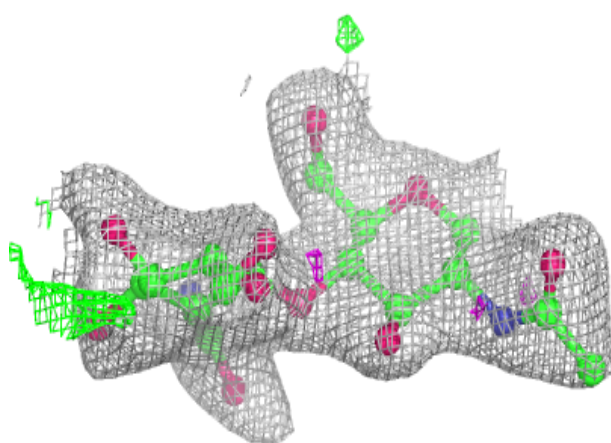
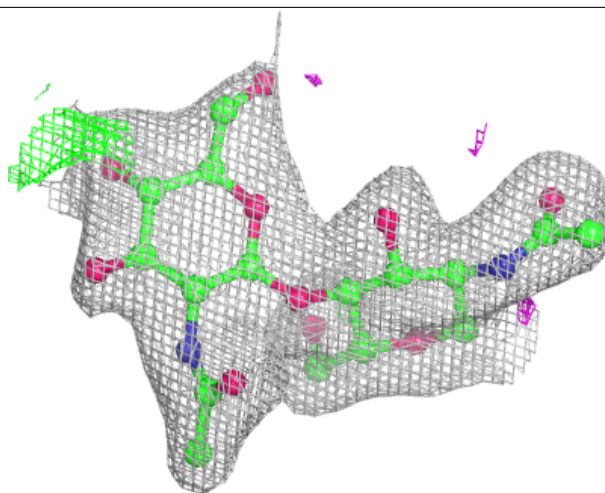
In the following table, the Atoms column lists the number of modelled atoms in the group and the number defined in the chemical component dictionary. The B-factors column lists the minimum, median, 95th percentile and maximum values of B factors of atoms in the group. The column labelled 'Q< 0.9' lists the number of atoms with occupancy less than 0.9.

Mol	Type	Chain	Res	Atoms	RSCC	RSR	B-factors(Å ²)	Q<0.9
2	NAG	G	2	14/15	0.75	0.16	51,59,67,67	0
2	NAG	D	2	14/15	0.76	0.13	53,60,66,66	0
2	NAG	F	2	14/15	0.88	0.10	49,52,56,56	0
2	NAG	C	2	14/15	0.88	0.10	56,59,64,64	0
3	NAG	E	2	14/15	0.88	0.12	53,58,62,63	0
3	FUC	E	3	10/11	0.90	0.09	45,49,53,55	0
2	NAG	D	1	14/15	0.93	0.08	41,46,49,51	0
3	NAG	E	1	14/15	0.93	0.09	38,43,45,49	0
2	NAG	F	1	14/15	0.95	0.09	38,43,46,46	0
2	NAG	C	1	14/15	0.96	0.06	41,45,49,52	0
2	NAG	G	1	14/15	0.96	0.07	37,41,43,47	0

The following is a graphical depiction of the model fit to experimental electron density for oligosaccharide. Each fit is shown from different orientation to approximate a three-dimensional view.

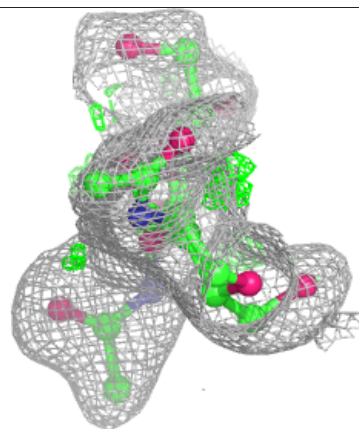
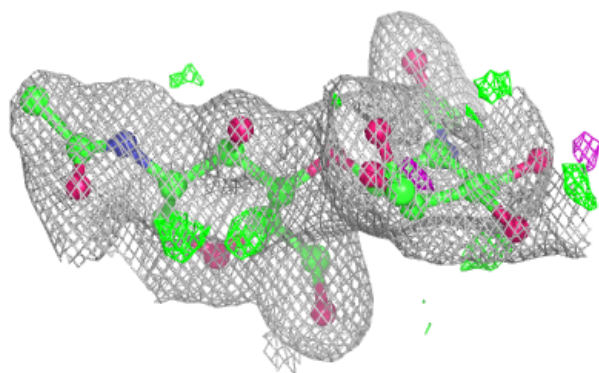
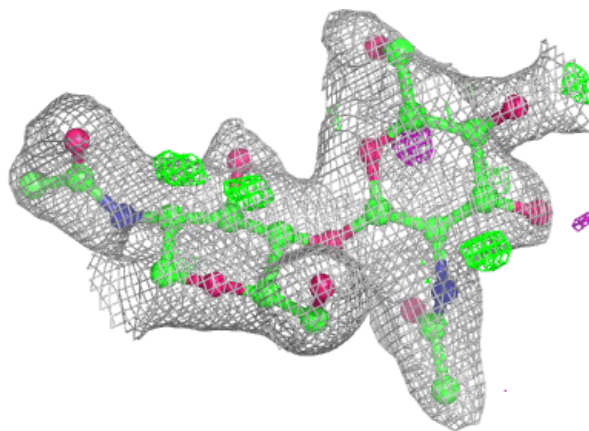
Electron density around Chain C:

$2mF_o-DF_c$ (at 0.7 rmsd) in gray
 mF_o-DF_c (at 3 rmsd) in purple (negative)
and green (positive)



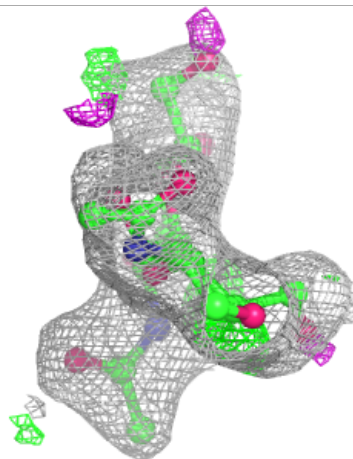
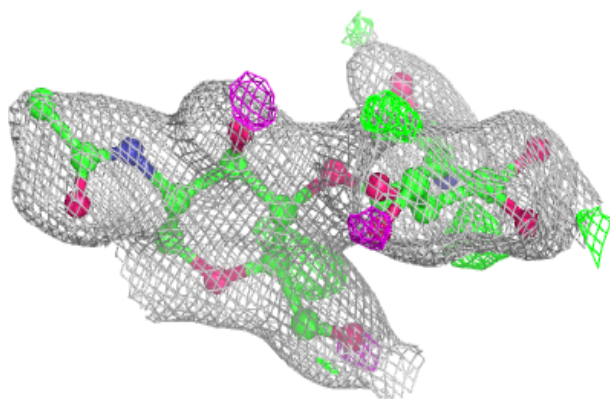
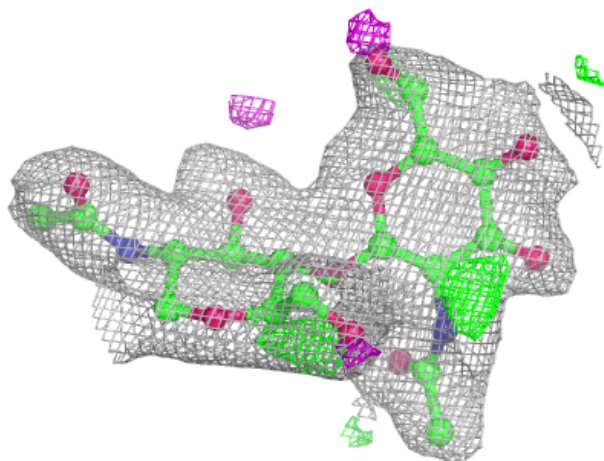
Electron density around Chain D:

$2mF_o-DF_c$ (at 0.7 rmsd) in gray
 mF_o-DF_c (at 3 rmsd) in purple (negative)
and green (positive)



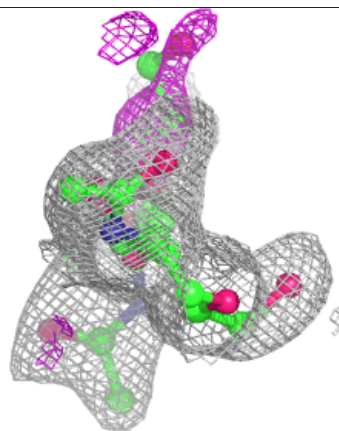
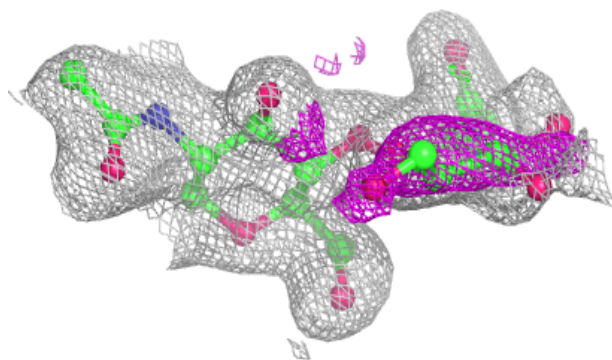
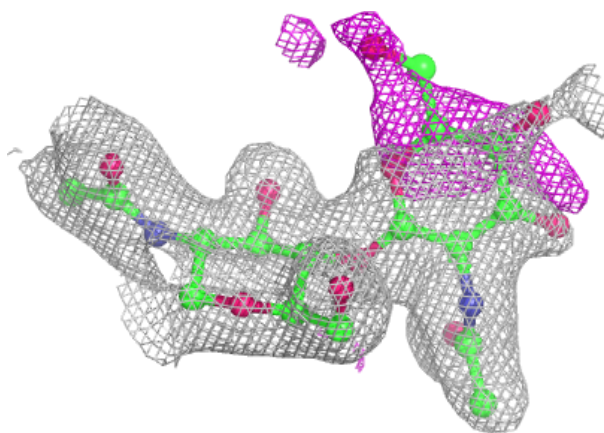
Electron density around Chain F:

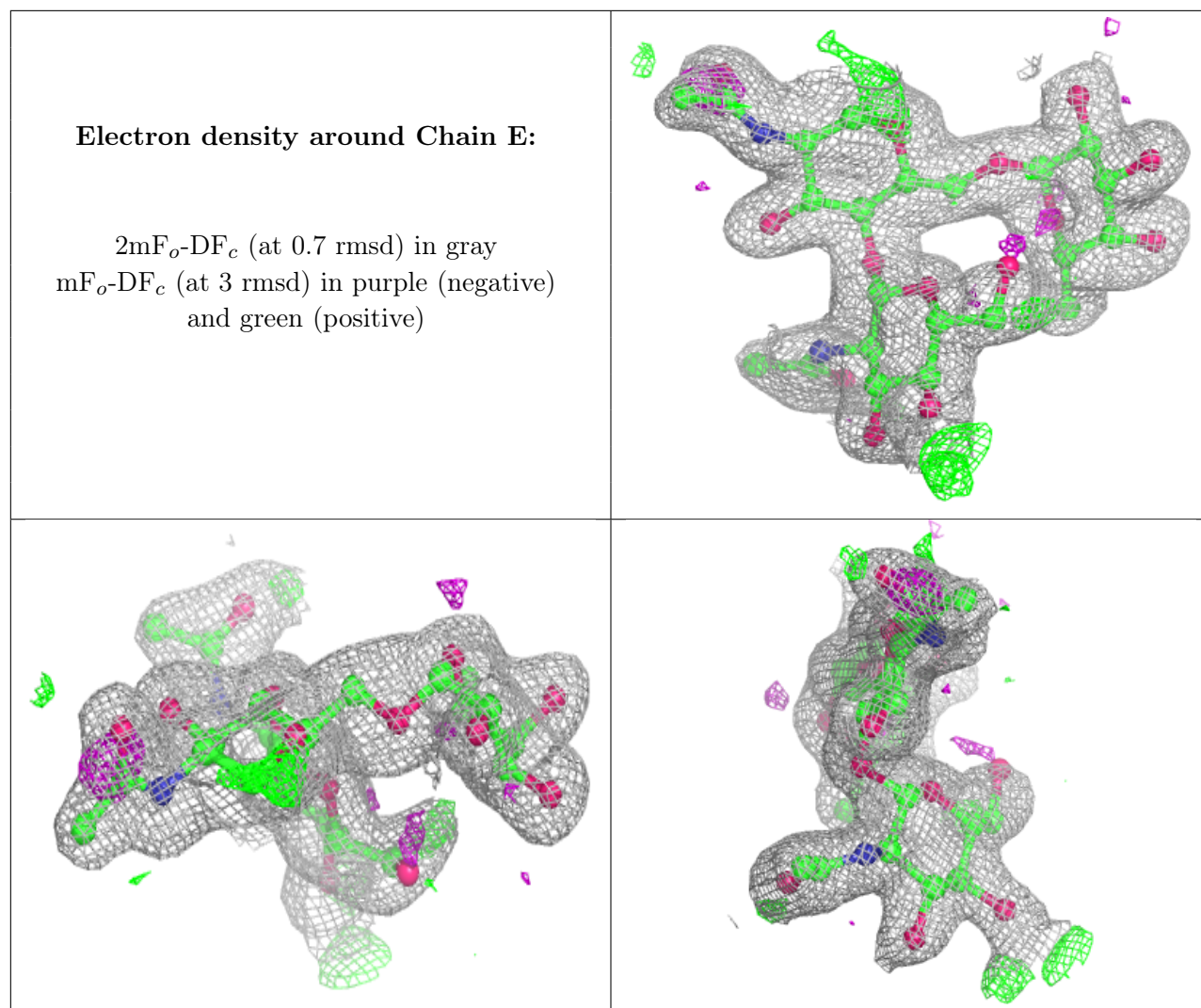
$2mF_o-DF_c$ (at 0.7 rmsd) in gray
 mF_o-DF_c (at 3 rmsd) in purple (negative)
and green (positive)



Electron density around Chain G:

$2mF_o-DF_c$ (at 0.7 rmsd) in gray
 mF_o-DF_c (at 3 rmsd) in purple (negative)
and green (positive)





6.4 Ligands [i](#)

In the following table, the Atoms column lists the number of modelled atoms in the group and the number defined in the chemical component dictionary. The B-factors column lists the minimum, median, 95th percentile and maximum values of B factors of atoms in the group. The column labelled 'Q< 0.9' lists the number of atoms with occupancy less than 0.9.

Mol	Type	Chain	Res	Atoms	RSCC	RSR	B-factors(\AA^2)	Q<0.9
7	CIT	B	508	13/13	0.73	0.12	69,75,78,79	0
5	EDO	A	510	4/4	0.85	0.13	40,45,47,48	0
6	NAG	B	507	14/15	0.87	0.09	51,55,60,60	0
4	CA	A	502	1/1	0.97	0.20	43,43,43,43	0
4	CA	B	502	1/1	0.99	0.22	30,30,30,30	0
4	CA	B	501	1/1	0.99	0.20	34,34,34,34	0
4	CA	A	501	1/1	1.00	0.22	30,30,30,30	0

6.5 Other polymers [i](#)

There are no such residues in this entry.