



Full wwPDB EM Validation Report ⓘ

Jun 25, 2025 – 03:17 am BST

PDB ID : 9F6Q / pdb_00009f6q
EMDB ID : EMD-50238
Title : Human NRAMP1 (SLC11A1) in an occluded state
Authors : Liziczai, M.; Dutzler, R.
Deposited on : 2024-05-02
Resolution : 3.90 Å(reported)

This is a Full wwPDB EM Validation Report for a publicly released PDB entry.

We welcome your comments at validation@mail.wwpdb.org

A user guide is available at

<https://www.wwpdb.org/validation/2017/EMValidationReportHelp>

with specific help available everywhere you see the ⓘ symbol.

The types of validation reports are described at

<http://www.wwpdb.org/validation/2017/FAQs#types>.

The following versions of software and data (see [references ⓘ](#)) were used in the production of this report:

EMDB validation analysis : 0.0.1.dev118
MolProbity : 4-5-2 with Phenix2.0rc1
Percentile statistics : 20231227.v01 (using entries in the PDB archive December 27th 2023)
MapQ : 1.9.13
Ideal geometry (proteins) : Engh & Huber (2001)
Ideal geometry (DNA, RNA) : Parkinson et al. (1996)
Validation Pipeline (wwPDB-VP) : 2.44

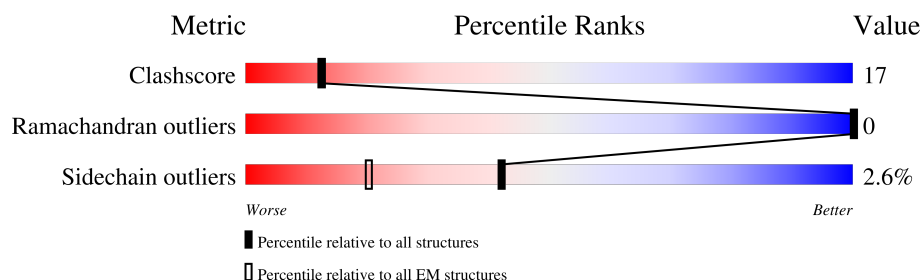
1 Overall quality at a glance

The following experimental techniques were used to determine the structure:

ELECTRON MICROSCOPY

The reported resolution of this entry is 3.90 Å.

Percentile scores (ranging between 0-100) for global validation metrics of the entry are shown in the following graphic. The table shows the number of entries on which the scores are based.



Metric	Whole archive (#Entries)	EM structures (#Entries)
Clashscore	210492	15764
Ramachandran outliers	207382	16835
Sidechain outliers	206894	16415

The table below summarises the geometric issues observed across the polymeric chains and their fit to the map. The red, orange, yellow and green segments of the bar indicate the fraction of residues that contain outliers for ≥ 3 , 2, 1 and 0 types of geometric quality criteria respectively. A grey segment represents the fraction of residues that are not modelled. The numeric value for each fraction is indicated below the corresponding segment, with a dot representing fractions $\leq 5\%$. The upper red bar (where present) indicates the fraction of residues that have poor fit to the EM map (all-atom inclusion $< 40\%$). The numeric value is given above the bar.

Mol	Chain	Length	Quality of chain
1	A	615	

2 Entry composition

There is only 1 type of molecule in this entry. The entry contains 3618 atoms, of which 0 are hydrogens and 0 are deuteriums.

In the tables below, the AltConf column contains the number of residues with at least one atom in alternate conformation and the Trace column contains the number of residues modelled with at most 2 atoms.

- Molecule 1 is a protein called Natural resistance-associated macrophage protein 1.

Mol	Chain	Residues	Atoms					AltConf	Trace
1	A	469	Total	C	N	O	S	0	0
			3618	2392	589	615	22		

There are 66 discrepancies between the modelled and reference sequences:

Chain	Residue	Modelled	Actual	Comment	Reference
A	0	MET	-	initiating methionine	UNP P49279
A	1	SER	-	expression tag	UNP P49279
A	551	ALA	-	expression tag	UNP P49279
A	552	LEU	-	expression tag	UNP P49279
A	553	GLU	-	expression tag	UNP P49279
A	554	VAL	-	expression tag	UNP P49279
A	555	LEU	-	expression tag	UNP P49279
A	556	PHE	-	expression tag	UNP P49279
A	557	GLN	-	expression tag	UNP P49279
A	558	GLY	-	expression tag	UNP P49279
A	559	PRO	-	expression tag	UNP P49279
A	560	GLN	-	expression tag	UNP P49279
A	561	GLY	-	expression tag	UNP P49279
A	562	THR	-	expression tag	UNP P49279
A	563	GLU	-	expression tag	UNP P49279
A	564	GLN	-	expression tag	UNP P49279
A	565	LYS	-	expression tag	UNP P49279
A	566	LEU	-	expression tag	UNP P49279
A	567	ILE	-	expression tag	UNP P49279
A	568	SER	-	expression tag	UNP P49279
A	569	GLU	-	expression tag	UNP P49279
A	570	GLU	-	expression tag	UNP P49279
A	571	ASP	-	expression tag	UNP P49279
A	572	LEU	-	expression tag	UNP P49279
A	573	ARG	-	expression tag	UNP P49279
A	574	GLY	-	expression tag	UNP P49279
A	575	ALA	-	expression tag	UNP P49279
A	576	SER	-	expression tag	UNP P49279

Continued on next page...

Continued from previous page...

Chain	Residue	Modelled	Actual	Comment	Reference
A	577	MET	-	expression tag	UNP P49279
A	578	ASP	-	expression tag	UNP P49279
A	579	GLU	-	expression tag	UNP P49279
A	580	LYS	-	expression tag	UNP P49279
A	581	THR	-	expression tag	UNP P49279
A	582	THR	-	expression tag	UNP P49279
A	583	GLY	-	expression tag	UNP P49279
A	584	TRP	-	expression tag	UNP P49279
A	585	ARG	-	expression tag	UNP P49279
A	586	GLY	-	expression tag	UNP P49279
A	587	GLY	-	expression tag	UNP P49279
A	588	HIS	-	expression tag	UNP P49279
A	589	VAL	-	expression tag	UNP P49279
A	590	VAL	-	expression tag	UNP P49279
A	591	GLU	-	expression tag	UNP P49279
A	592	GLY	-	expression tag	UNP P49279
A	593	LEU	-	expression tag	UNP P49279
A	594	ALA	-	expression tag	UNP P49279
A	595	GLY	-	expression tag	UNP P49279
A	596	GLU	-	expression tag	UNP P49279
A	597	LEU	-	expression tag	UNP P49279
A	598	GLU	-	expression tag	UNP P49279
A	599	GLN	-	expression tag	UNP P49279
A	600	LEU	-	expression tag	UNP P49279
A	601	ARG	-	expression tag	UNP P49279
A	602	ALA	-	expression tag	UNP P49279
A	603	ARG	-	expression tag	UNP P49279
A	604	LEU	-	expression tag	UNP P49279
A	605	GLU	-	expression tag	UNP P49279
A	606	HIS	-	expression tag	UNP P49279
A	607	HIS	-	expression tag	UNP P49279
A	608	PRO	-	expression tag	UNP P49279
A	609	GLN	-	expression tag	UNP P49279
A	610	GLY	-	expression tag	UNP P49279
A	611	GLN	-	expression tag	UNP P49279
A	612	ARG	-	expression tag	UNP P49279
A	613	GLU	-	expression tag	UNP P49279
A	614	PRO	-	expression tag	UNP P49279

4 Experimental information

Property	Value	Source
EM reconstruction method	SINGLE PARTICLE	Depositor
Imposed symmetry	POINT, Not provided	
Number of particles used	125836	Depositor
Resolution determination method	FSC 0.143 CUT-OFF	Depositor
CTF correction method	PHASE FLIPPING AND AMPLITUDE CORRECTION	Depositor
Microscope	TFS KRIOS	Depositor
Voltage (kV)	300	Depositor
Electron dose ($e^-/\text{\AA}^2$)	60	Depositor
Minimum defocus (nm)	1000	Depositor
Maximum defocus (nm)	2400	Depositor
Magnification	130000	Depositor
Image detector	GATAN K3 BIOQUANTUM (6k x 4k)	Depositor
Maximum map value	0.828	Depositor
Minimum map value	-0.426	Depositor
Average map value	0.001	Depositor
Map value standard deviation	0.022	Depositor
Recommended contour level	0.2	Depositor
Map size (Å)	249.98401, 249.98401, 249.98401	wwPDB
Map dimensions	192, 192, 192	wwPDB
Map angles (°)	90.0, 90.0, 90.0	wwPDB
Pixel spacing (Å)	1.302, 1.302, 1.302	Depositor

5 Model quality [i](#)

5.1 Standard geometry [i](#)

The Z score for a bond length (or angle) is the number of standard deviations the observed value is removed from the expected value. A bond length (or angle) with $|Z| > 5$ is considered an outlier worth inspection. RMSZ is the root-mean-square of all Z scores of the bond lengths (or angles).

Mol	Chain	Bond lengths		Bond angles	
		RMSZ	$\# Z > 5$	RMSZ	$\# Z > 5$
1	A	0.16	0/3706	0.44	0/5053

There are no bond length outliers.

There are no bond angle outliers.

There are no chirality outliers.

There are no planarity outliers.

5.2 Too-close contacts [i](#)

In the following table, the Non-H and H(model) columns list the number of non-hydrogen atoms and hydrogen atoms in the chain respectively. The H(added) column lists the number of hydrogen atoms added and optimized by MolProbity. The Clashes column lists the number of clashes within the asymmetric unit, whereas Symm-Clashes lists symmetry-related clashes.

Mol	Chain	Non-H	H(model)	H(added)	Clashes	Symm-Clashes
1	A	3618	0	3731	122	0
All	All	3618	0	3731	122	0

The all-atom clashscore is defined as the number of clashes found per 1000 atoms (including hydrogen atoms). The all-atom clashscore for this structure is 17.

All (122) close contacts within the same asymmetric unit are listed below, sorted by their clash magnitude.

Atom-1	Atom-2	Interatomic distance (Å)	Clash overlap (Å)
1:A:444:LEU:HD23	1:A:514:LEU:HB3	1.58	0.86
1:A:102:LEU:HD13	1:A:472:ILE:HG21	1.67	0.77
1:A:440:PRO:HA	1:A:443:VAL:HG12	1.66	0.76
1:A:316:GLN:HE22	1:A:338:ASN:HB3	1.52	0.74
1:A:306:PHE:O	1:A:310:PHE:HB2	1.86	0.74

Continued on next page...

Continued from previous page...

Atom-1	Atom-2	Interatomic distance (Å)	Clash overlap (Å)
1:A:199:PHE:HE2	1:A:377:MET:HG3	1.52	0.74
1:A:334:PHE:HD2	1:A:336:MET:HE3	1.55	0.72
1:A:273:ARG:HE	1:A:275:ALA:H	1.40	0.70
1:A:87:VAL:HB	1:A:243:GLN:HE22	1.57	0.69
1:A:137:LEU:O	1:A:141:ILE:HD12	1.93	0.68
1:A:319:PHE:O	1:A:323:ALA:HB2	1.93	0.67
1:A:382:ALA:O	1:A:386:VAL:HG23	1.95	0.67
1:A:162:LEU:HD22	1:A:361:LEU:HD13	1.79	0.65
1:A:114:GLY:HA3	1:A:264:VAL:HG21	1.79	0.64
1:A:251:ILE:HG23	1:A:252:ILE:HG13	1.80	0.63
1:A:131:LYS:HA	1:A:134:ARG:HE	1.63	0.63
1:A:205:ILE:O	1:A:209:THR:HG23	1.99	0.63
1:A:140:THR:HG23	1:A:438:LEU:HD22	1.80	0.62
1:A:220:GLU:H	1:A:308:GLN:HE22	1.47	0.62
1:A:150:MET:O	1:A:154:ILE:HG13	2.01	0.61
1:A:336:MET:HA	1:A:336:MET:HE2	1.82	0.61
1:A:220:GLU:H	1:A:308:GLN:NE2	1.99	0.60
1:A:70:ILE:HG13	1:A:203:ILE:HD12	1.83	0.59
1:A:72:PHE:O	1:A:77:ASN:ND2	2.35	0.59
1:A:193:ARG:HD3	1:A:193:ARG:H	1.66	0.59
1:A:408:ALA:O	1:A:412:THR:HG23	2.02	0.59
1:A:146:VAL:O	1:A:150:MET:HG3	2.03	0.58
1:A:142:GLU:OE2	1:A:400:ARG:NH2	2.33	0.58
1:A:329:ASP:HB2	1:A:350:VAL:HG21	1.86	0.58
1:A:58:LEU:O	1:A:62:THR:OG1	2.22	0.57
1:A:130:PRO:O	1:A:134:ARG:HG3	2.04	0.57
1:A:199:PHE:CE2	1:A:377:MET:HG3	2.39	0.57
1:A:74:ASP:OD1	1:A:77:ASN:ND2	2.38	0.56
1:A:117:THR:HG23	1:A:119:LYS:H	1.70	0.55
1:A:468:VAL:O	1:A:472:ILE:HG12	2.06	0.55
1:A:446:ILE:O	1:A:450:THR:HG23	2.07	0.55
1:A:213:GLU:OE2	1:A:305:VAL:HG21	2.08	0.53
1:A:131:LYS:HA	1:A:134:ARG:NE	2.23	0.53
1:A:68:MET:O	1:A:72:PHE:HD1	1.92	0.53
1:A:90:PHE:HE1	1:A:304:ALA:HA	1.74	0.53
1:A:73:LEU:HD11	1:A:298:ILE:HG21	1.91	0.52
1:A:179:VAL:HA	1:A:182:PHE:CE2	2.45	0.51
1:A:361:LEU:HG	1:A:362:TYR:N	2.25	0.51
1:A:406:SER:O	1:A:410:LEU:HG	2.11	0.51
1:A:359:ALA:HA	1:A:362:TYR:CD1	2.47	0.50
1:A:327:LEU:H	1:A:327:LEU:HD22	1.77	0.50

Continued on next page...

Continued from previous page...

Atom-1	Atom-2	Interatomic distance (Å)	Clash overlap (Å)
1:A:331:ALA:HA	1:A:334:PHE:HE1	1.76	0.50
1:A:412:THR:HA	1:A:415:VAL:HG12	1.94	0.50
1:A:504:ALA:O	1:A:508:LEU:HG	2.12	0.49
1:A:310:PHE:HE1	1:A:351:ILE:HG21	1.76	0.49
1:A:406:SER:HA	1:A:409:ILE:HG22	1.95	0.49
1:A:185:LEU:HD21	1:A:401:VAL:HG11	1.95	0.49
1:A:142:GLU:CD	1:A:400:ARG:HH22	2.22	0.48
1:A:184:PHE:O	1:A:187:LEU:HB3	2.14	0.48
1:A:295:SER:O	1:A:298:ILE:HG22	2.14	0.48
1:A:450:THR:OG1	1:A:461:ASN:OD1	2.25	0.48
1:A:375:SER:HA	1:A:378:THR:HG22	1.95	0.47
1:A:447:LEU:HD11	1:A:469:THR:HB	1.96	0.47
1:A:519:CYS:HA	1:A:522:HIS:HB2	1.96	0.47
1:A:130:PRO:HG2	1:A:133:PRO:HG2	1.96	0.47
1:A:249:GLY:HA3	1:A:436:SER:HB2	1.97	0.47
1:A:174:VAL:HA	1:A:177:THR:HG22	1.97	0.47
1:A:372:GLY:O	1:A:376:THR:OG1	2.31	0.47
1:A:259:LEU:O	1:A:263:LEU:HG	2.15	0.46
1:A:334:PHE:O	1:A:334:PHE:CG	2.69	0.46
1:A:64:PRO:HD2	1:A:287:GLU:OE2	2.16	0.46
1:A:121:LEU:HD23	1:A:258:TYR:CE1	2.50	0.46
1:A:194:LYS:HG3	1:A:196:GLU:HG2	1.98	0.46
1:A:145:ILE:HD11	1:A:379:GLY:O	2.16	0.46
1:A:346:TYR:HD2	1:A:421:LEU:HD22	1.80	0.46
1:A:358:PRO:HB2	1:A:362:TYR:CZ	2.51	0.45
1:A:466:LYS:HE2	1:A:522:HIS:ND1	2.31	0.45
1:A:73:LEU:HD12	1:A:206:MET:HE1	1.98	0.45
1:A:94:TRP:CG	1:A:231:PRO:HA	2.51	0.45
1:A:79:GLU:HB2	1:A:345:ILE:HD11	1.97	0.45
1:A:141:ILE:HD12	1:A:141:ILE:H	1.81	0.45
1:A:345:ILE:H	1:A:345:ILE:HD12	1.81	0.45
1:A:518:CYS:O	1:A:522:HIS:N	2.49	0.45
1:A:401:VAL:O	1:A:405:ARG:HG2	2.16	0.45
1:A:78:ILE:HG21	1:A:368:LEU:HD21	1.99	0.45
1:A:212:TYR:HA	1:A:215:VAL:HG12	1.99	0.45
1:A:268:GLU:C	1:A:269:ILE:HD13	2.42	0.45
1:A:64:PRO:O	1:A:67:LEU:N	2.49	0.44
1:A:205:ILE:HA	1:A:208:LEU:HD23	1.99	0.44
1:A:143:LEU:HD23	1:A:438:LEU:HD11	1.99	0.44
1:A:347:GLN:HA	1:A:350:VAL:HG12	1.99	0.44
1:A:220:GLU:CD	1:A:222:GLY:H	2.26	0.44

Continued on next page...

Continued from previous page...

Atom-1	Atom-2	Interatomic distance (Å)	Clash overlap (Å)
1:A:121:LEU:HA	1:A:124:VAL:HG12	1.99	0.44
1:A:333:ILE:O	1:A:335:PRO:HD3	2.18	0.44
1:A:377:MET:O	1:A:380:THR:OG1	2.32	0.44
1:A:82:LEU:HD21	1:A:344:ASP:C	2.44	0.43
1:A:116:VAL:HG23	1:A:277:ILE:HD12	2.00	0.43
1:A:169:PRO:HG2	1:A:171:TRP:CD1	2.54	0.43
1:A:301:PHE:O	1:A:305:VAL:HG12	2.18	0.43
1:A:485:VAL:HA	1:A:488:LEU:HG	2.01	0.42
1:A:65:GLY:HA2	1:A:68:MET:SD	2.59	0.42
1:A:65:GLY:N	1:A:287:GLU:OE1	2.52	0.42
1:A:299:ASN:HA	1:A:302:VAL:HG12	2.00	0.42
1:A:170:LEU:HD12	1:A:170:LEU:H	1.85	0.42
1:A:420:ASP:N	1:A:423:ASP:OD1	2.47	0.42
1:A:129:TYR:HB2	1:A:134:ARG:HG2	2.02	0.42
1:A:346:TYR:CD2	1:A:421:LEU:HD22	2.54	0.42
1:A:137:LEU:O	1:A:140:THR:HB	2.19	0.42
1:A:87:VAL:HB	1:A:243:GLN:NE2	2.32	0.42
1:A:322:CYS:HB2	1:A:354:CYS:HB2	1.83	0.42
1:A:185:LEU:HD11	1:A:397:ARG:O	2.20	0.42
1:A:90:PHE:O	1:A:93:LEU:HD12	2.20	0.41
1:A:262:ALA:O	1:A:265:LYS:HE2	2.19	0.41
1:A:296:PHE:CD2	1:A:296:PHE:C	2.98	0.41
1:A:150:MET:HA	1:A:153:VAL:HG22	2.02	0.41
1:A:381:TYR:HE1	1:A:397:ARG:HE	1.68	0.41
1:A:122:GLY:HA2	1:A:125:CYS:SG	2.62	0.41
1:A:179:VAL:HA	1:A:182:PHE:CD2	2.56	0.41
1:A:171:TRP:HA	1:A:174:VAL:HG22	2.01	0.40
1:A:387:MET:HG3	1:A:393:LEU:HB3	2.03	0.40
1:A:81:ASP:HB2	1:A:303:MET:HE3	2.03	0.40
1:A:209:THR:HB	1:A:363:ILE:CG2	2.51	0.40
1:A:285:LEU:O	1:A:289:THR:OG1	2.37	0.40
1:A:69:SER:HB3	1:A:291:ALA:HB1	2.04	0.40
1:A:120:ASP:OD1	1:A:123:GLU:HG3	2.22	0.40
1:A:154:ILE:O	1:A:158:ILE:HG12	2.22	0.40
1:A:259:LEU:HD11	1:A:378:THR:OG1	2.21	0.40

There are no symmetry-related clashes.

5.3 Torsion angles

5.3.1 Protein backbone

In the following table, the Percentiles column shows the percent Ramachandran outliers of the chain as a percentile score with respect to all PDB entries followed by that with respect to all EM entries.

The Analysed column shows the number of residues for which the backbone conformation was analysed, and the total number of residues.

Mol	Chain	Analysed	Favoured	Allowed	Outliers	Percentiles	
1	A	467/615 (76%)	448 (96%)	19 (4%)	0	100	100

There are no Ramachandran outliers to report.

5.3.2 Protein sidechains

In the following table, the Percentiles column shows the percent sidechain outliers of the chain as a percentile score with respect to all PDB entries followed by that with respect to all EM entries.

The Analysed column shows the number of residues for which the sidechain conformation was analysed, and the total number of residues.

Mol	Chain	Analysed	Rotameric	Outliers	Percentiles	
1	A	381/501 (76%)	371 (97%)	10 (3%)	41	61

All (10) residues with a non-rotameric sidechain are listed below:

Mol	Chain	Res	Type
1	A	70	ILE
1	A	187	LEU
1	A	208	LEU
1	A	303	MET
1	A	361	LEU
1	A	368	LEU
1	A	369	LEU
1	A	432	ASN
1	A	447	LEU
1	A	487	TYR

Sometimes sidechains can be flipped to improve hydrogen bonding and reduce clashes. All (4) such sidechains are listed below:

Mol	Chain	Res	Type
1	A	243	GLN
1	A	260	HIS
1	A	308	GLN
1	A	328	HIS

5.3.3 RNA [i](#)

There are no RNA molecules in this entry.

5.4 Non-standard residues in protein, DNA, RNA chains [i](#)

There are no non-standard protein/DNA/RNA residues in this entry.

5.5 Carbohydrates [i](#)

There are no oligosaccharides in this entry.

5.6 Ligand geometry [i](#)

There are no ligands in this entry.

5.7 Other polymers [i](#)

There are no such residues in this entry.

5.8 Polymer linkage issues [i](#)

There are no chain breaks in this entry.

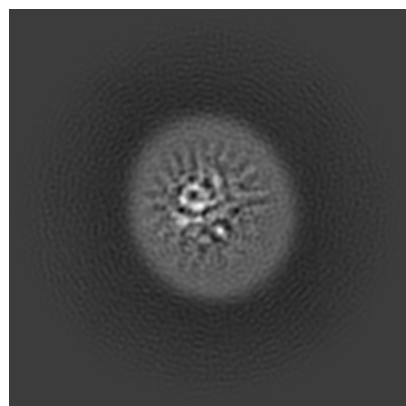
6 Map visualisation [i](#)

This section contains visualisations of the EMDB entry EMD-50238. These allow visual inspection of the internal detail of the map and identification of artifacts.

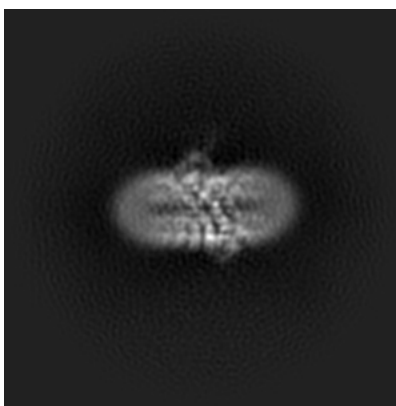
Images derived from a raw map, generated by summing the deposited half-maps, are presented below the corresponding image components of the primary map to allow further visual inspection and comparison with those of the primary map.

6.1 Orthogonal projections [i](#)

6.1.1 Primary map



X

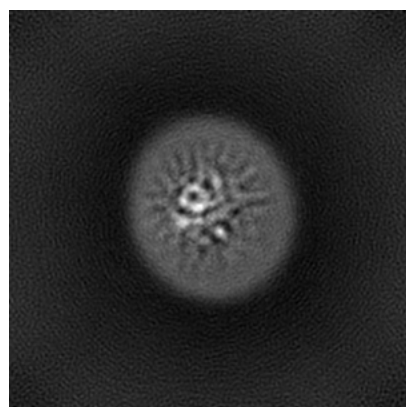


Y

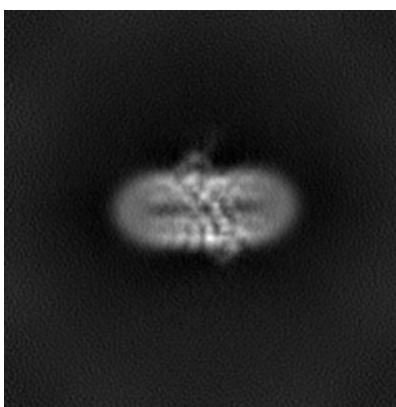


Z

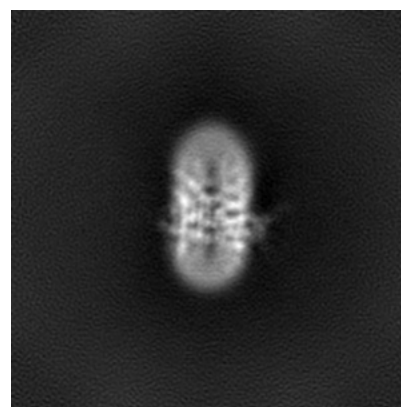
6.1.2 Raw map



X



Y

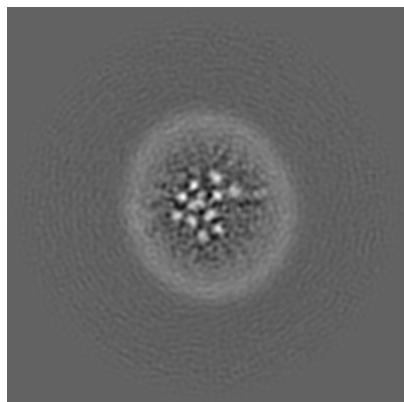


Z

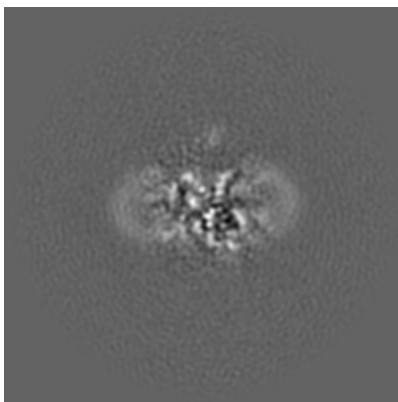
The images above show the map projected in three orthogonal directions.

6.2 Central slices [i](#)

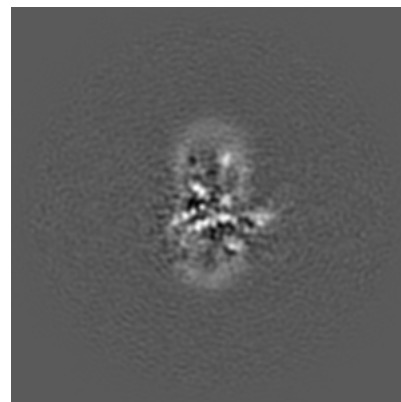
6.2.1 Primary map



X Index: 96

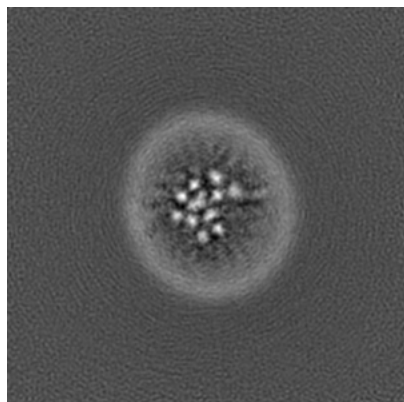


Y Index: 96

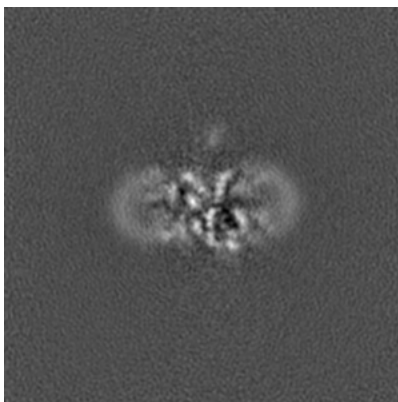


Z Index: 96

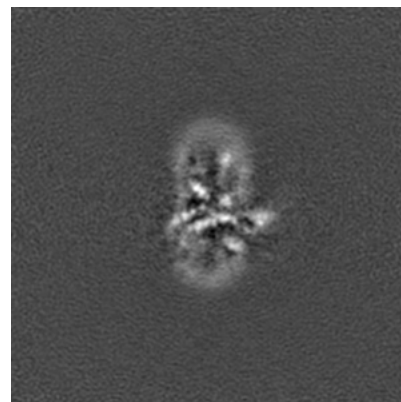
6.2.2 Raw map



X Index: 96



Y Index: 96

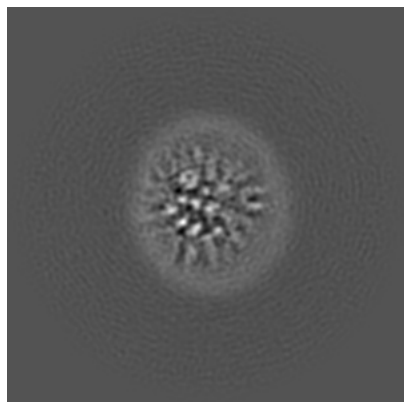


Z Index: 96

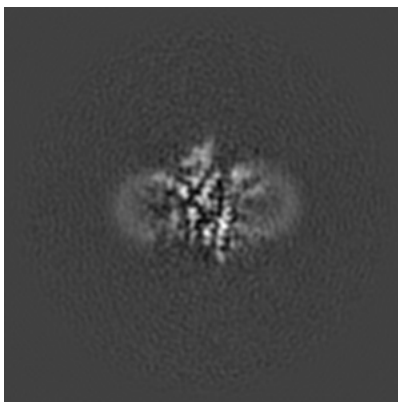
The images above show central slices of the map in three orthogonal directions.

6.3 Largest variance slices [i](#)

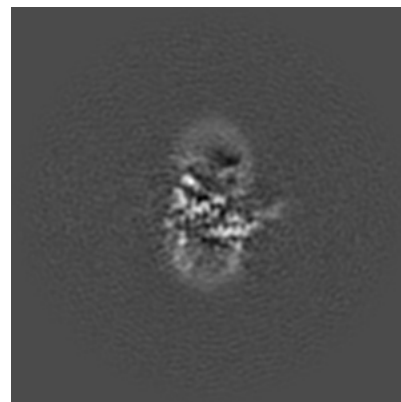
6.3.1 Primary map



X Index: 104

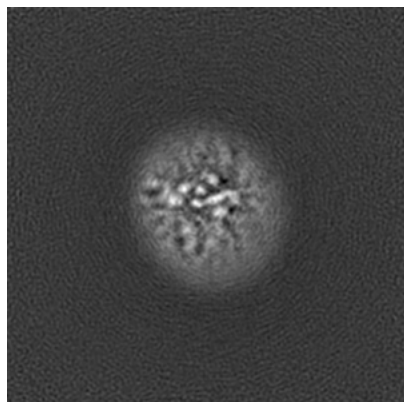


Y Index: 91

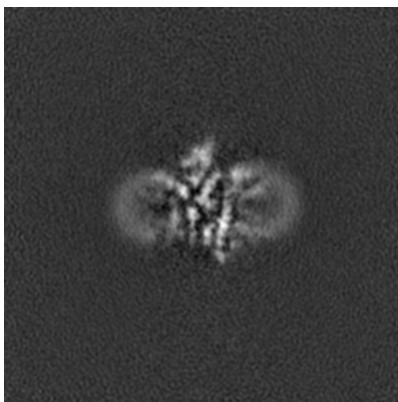


Z Index: 99

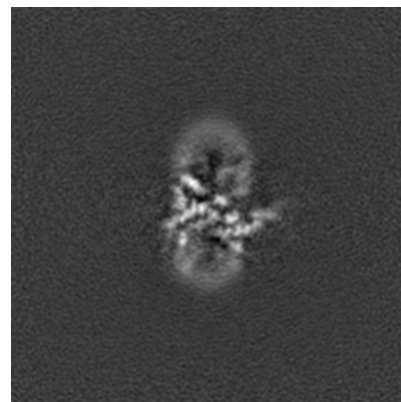
6.3.2 Raw map



X Index: 82



Y Index: 91

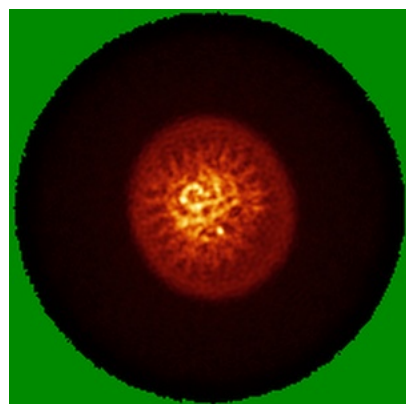


Z Index: 98

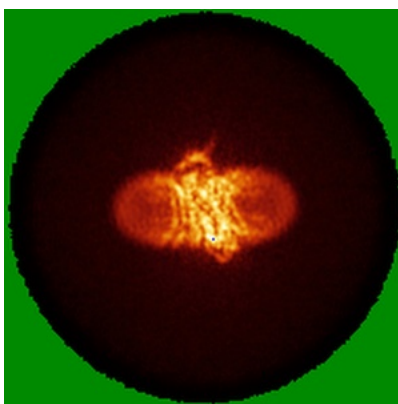
The images above show the largest variance slices of the map in three orthogonal directions.

6.4 Orthogonal standard-deviation projections (False-color) [i](#)

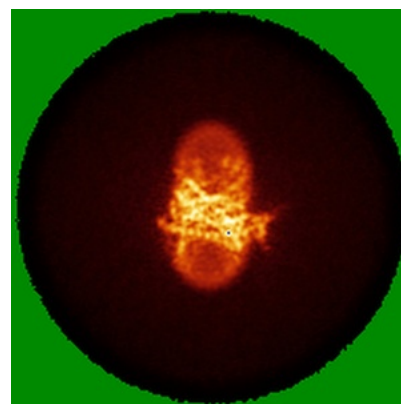
6.4.1 Primary map



X

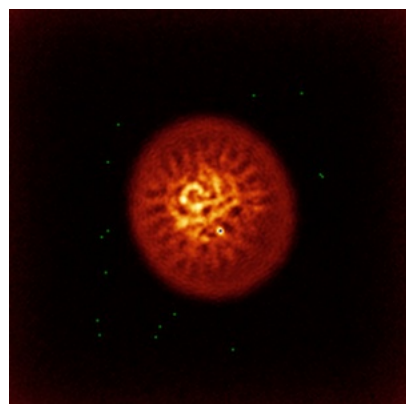


Y

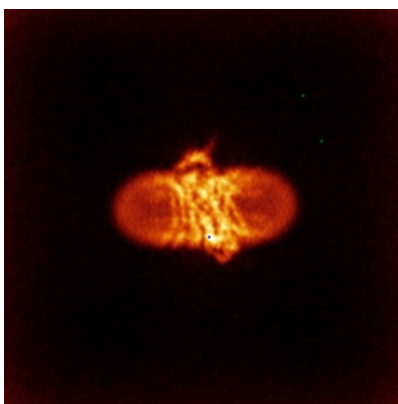


Z

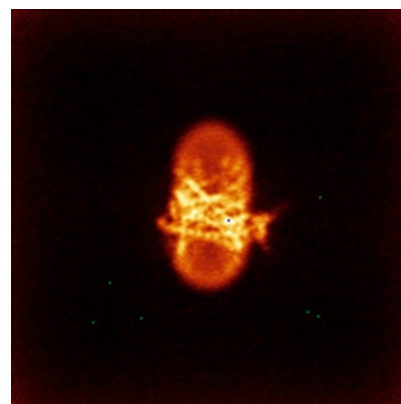
6.4.2 Raw map



X



Y

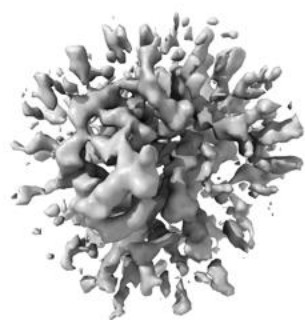


Z

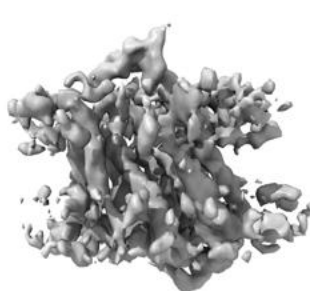
The images above show the map standard deviation projections with false color in three orthogonal directions. Minimum values are shown in green, max in blue, and dark to light orange shades represent small to large values respectively.

6.5 Orthogonal surface views [i](#)

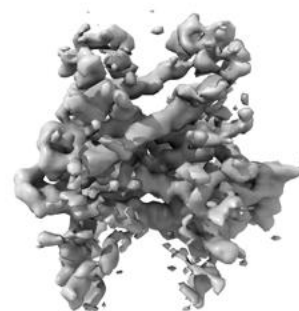
6.5.1 Primary map



X



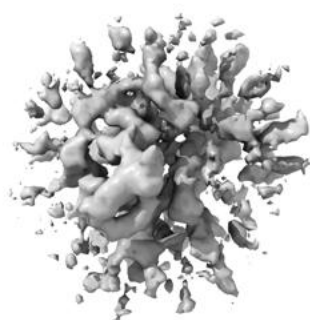
Y



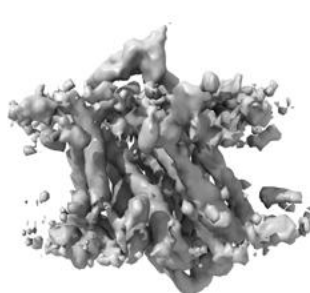
Z

The images above show the 3D surface view of the map at the recommended contour level 0.2. These images, in conjunction with the slice images, may facilitate assessment of whether an appropriate contour level has been provided.

6.5.2 Raw map



X



Y



Z

These images show the 3D surface of the raw map. The raw map's contour level was selected so that its surface encloses the same volume as the primary map does at its recommended contour level.

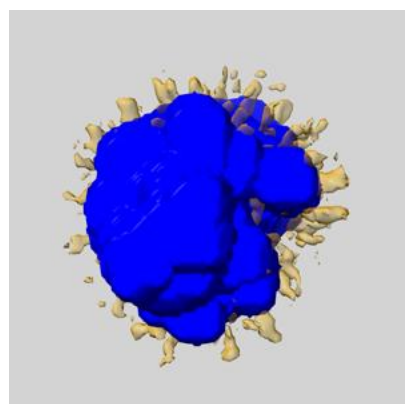
6.6 Mask visualisation [i](#)

This section shows the 3D surface view of the primary map at 50% transparency overlaid with the specified mask at 0% transparency

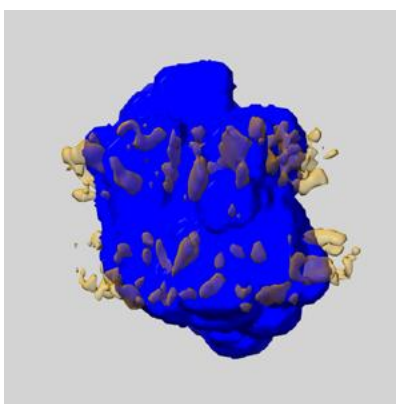
A mask typically either:

- Encompasses the whole structure
- Separates out a domain, a functional unit, a monomer or an area of interest from a larger structure

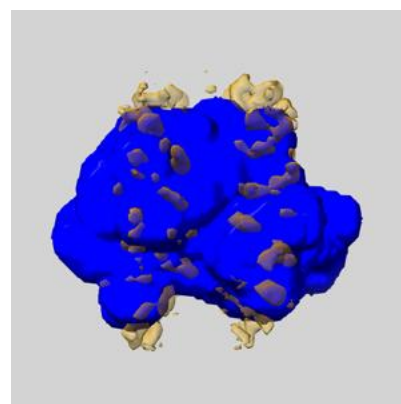
6.6.1 emd_50238_msk_1.map [i](#)



X



Y

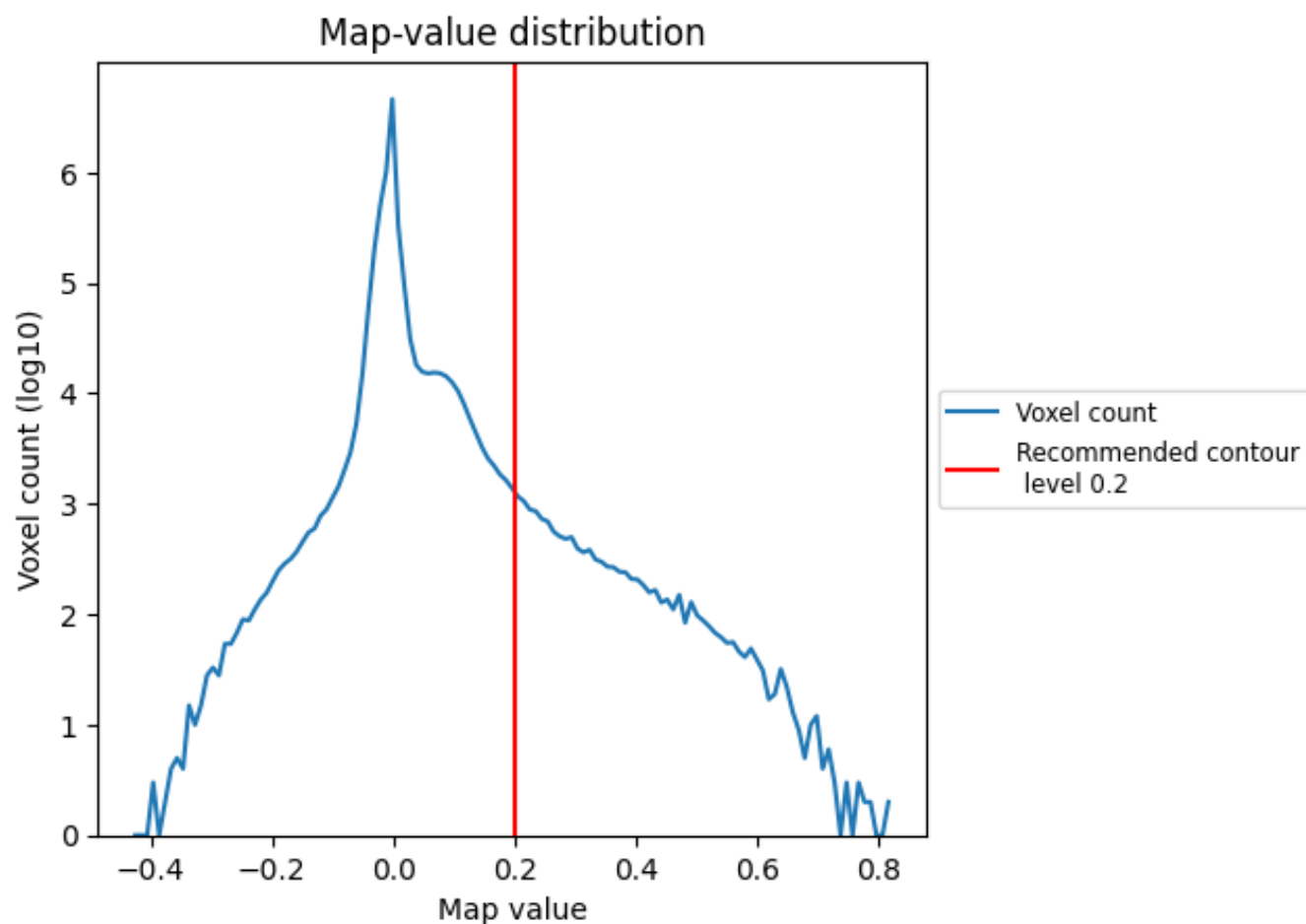


Z

7 Map analysis [i](#)

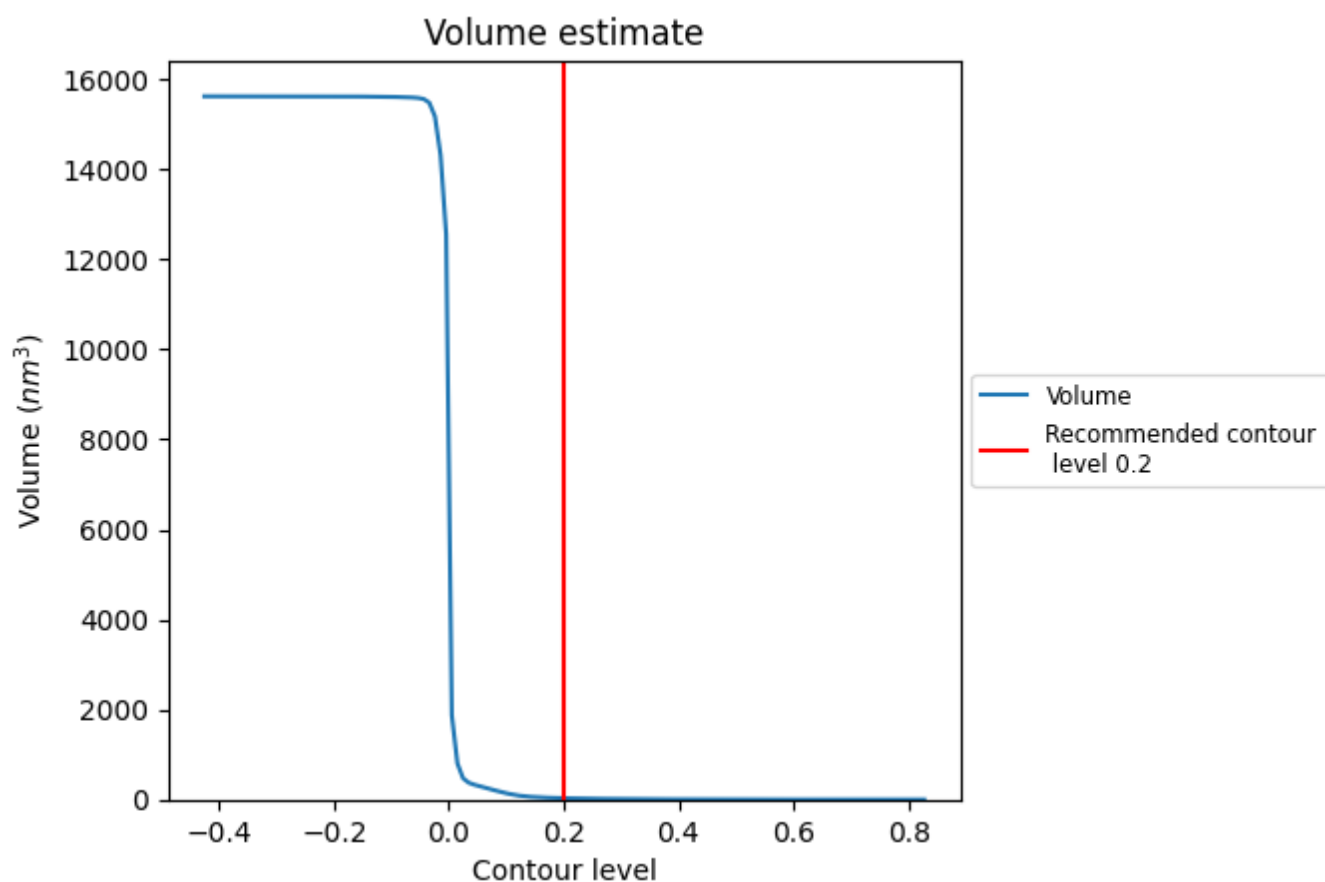
This section contains the results of statistical analysis of the map.

7.1 Map-value distribution [i](#)



The map-value distribution is plotted in 128 intervals along the x-axis. The y-axis is logarithmic. A spike in this graph at zero usually indicates that the volume has been masked.

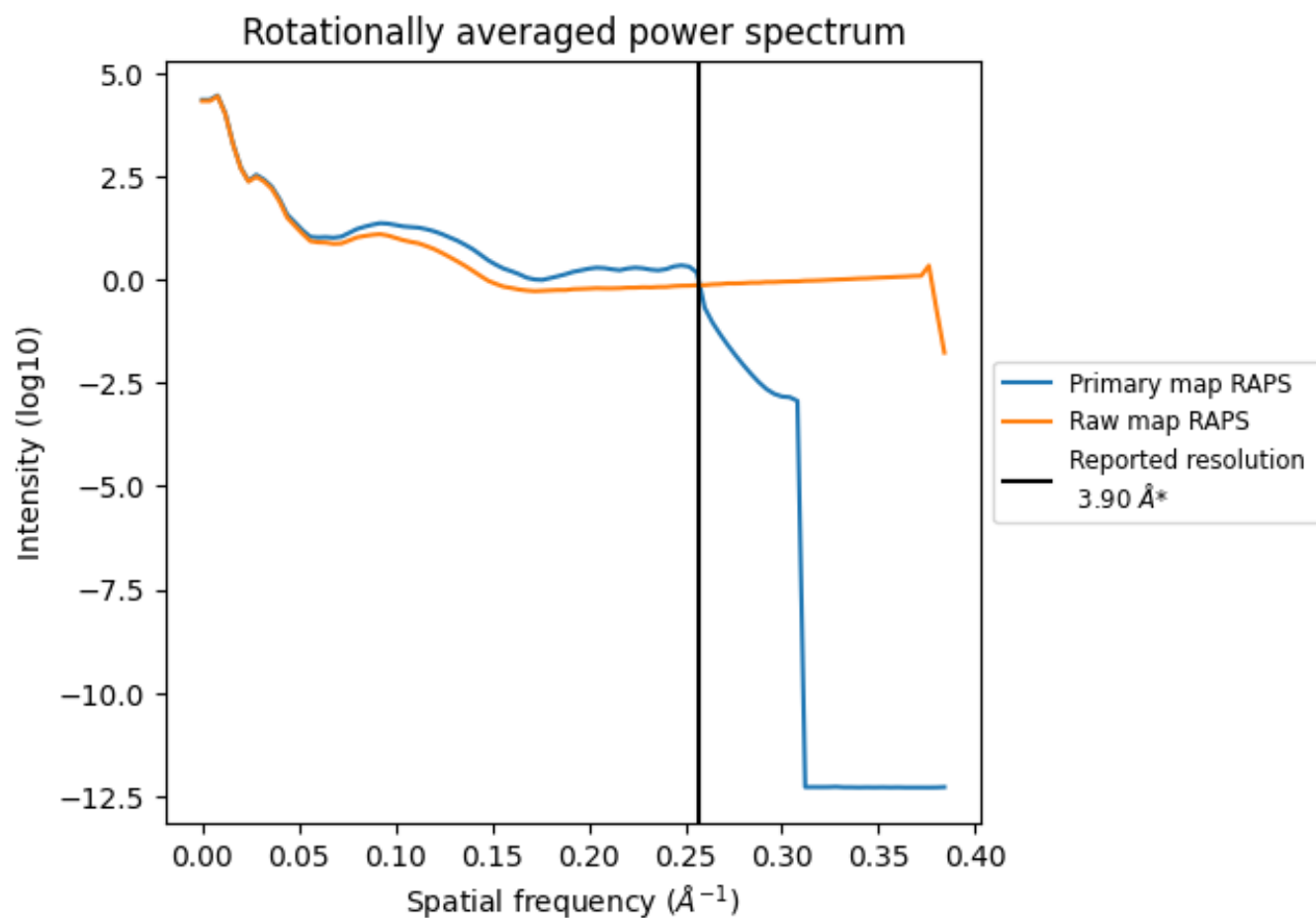
7.2 Volume estimate [i](#)



The volume at the recommended contour level is 30 nm^3 ; this corresponds to an approximate mass of 27 kDa.

The volume estimate graph shows how the enclosed volume varies with the contour level. The recommended contour level is shown as a vertical line and the intersection between the line and the curve gives the volume of the enclosed surface at the given level.

7.3 Rotationally averaged power spectrum ⓘ

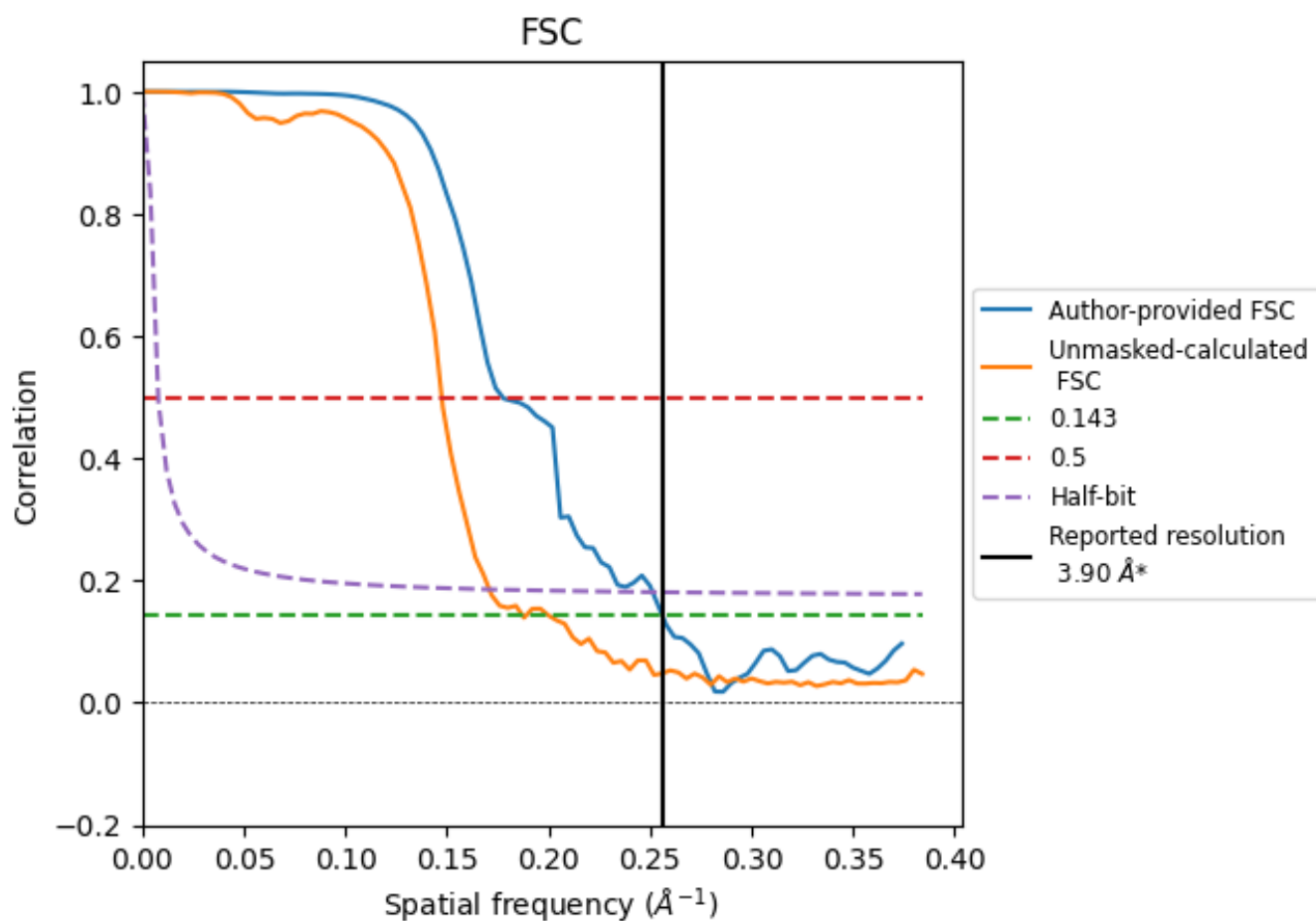


*Reported resolution corresponds to spatial frequency of 0.256 Å⁻¹

8 Fourier-Shell correlation [i](#)

Fourier-Shell Correlation (FSC) is the most commonly used method to estimate the resolution of single-particle and subtomogram-averaged maps. The shape of the curve depends on the imposed symmetry, mask and whether or not the two 3D reconstructions used were processed from a common reference. The reported resolution is shown as a black line. A curve is displayed for the half-bit criterion in addition to lines showing the 0.143 gold standard cut-off and 0.5 cut-off.

8.1 FSC [i](#)



*Reported resolution corresponds to spatial frequency of 0.256 \AA^{-1}

8.2 Resolution estimates [i](#)

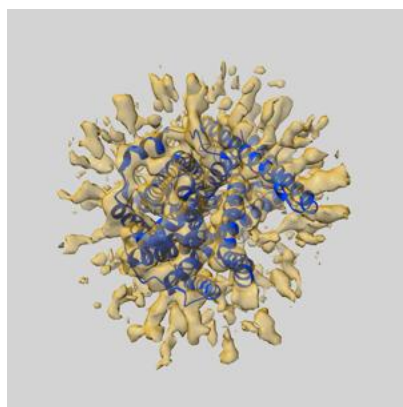
Resolution estimate (Å)	Estimation criterion (FSC cut-off)		
	0.143	0.5	Half-bit
Reported by author	3.90	-	-
Author-provided FSC curve	3.91	5.63	3.98
Unmasked-calculated*	5.34	6.78	5.85

*Resolution estimate based on FSC curve calculated by comparison of deposited half-maps. The value from deposited half-maps intersecting FSC 0.143 CUT-OFF 5.34 differs from the reported value 3.9 by more than 10 %

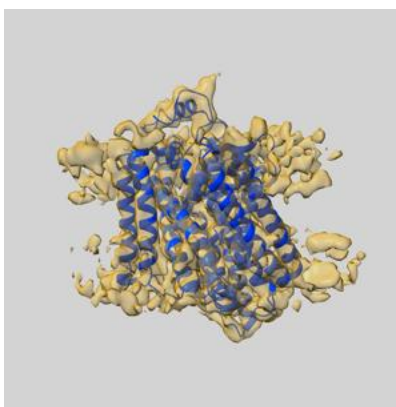
9 Map-model fit [i](#)

This section contains information regarding the fit between EMDB map EMD-50238 and PDB model 9F6Q. Per-residue inclusion information can be found in section [3](#) on page [5](#).

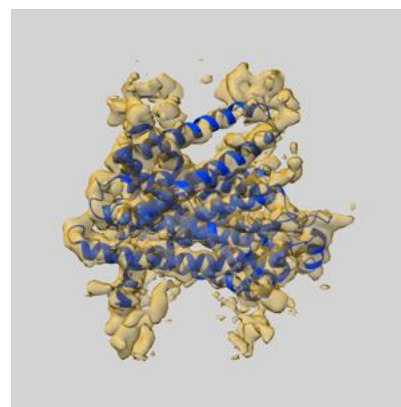
9.1 Map-model overlay [i](#)



X



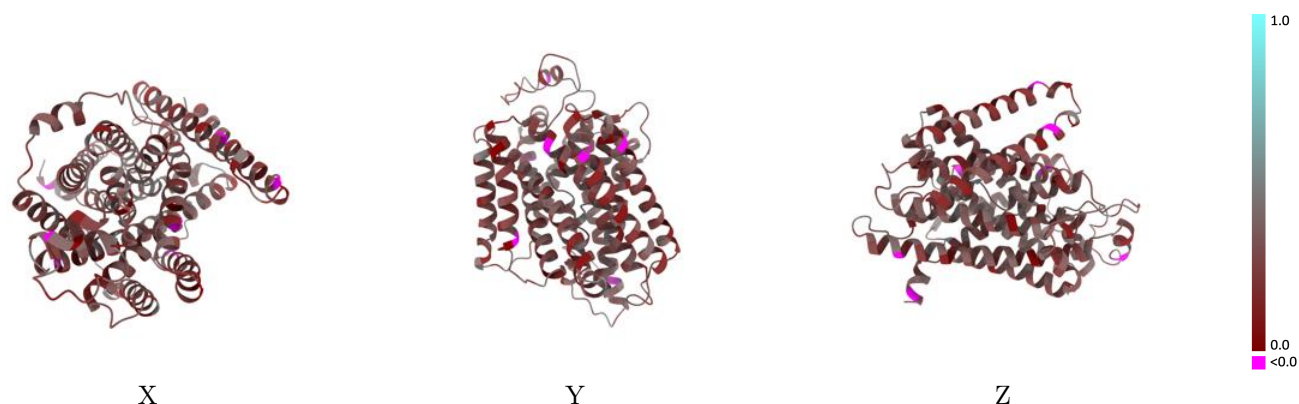
Y



Z

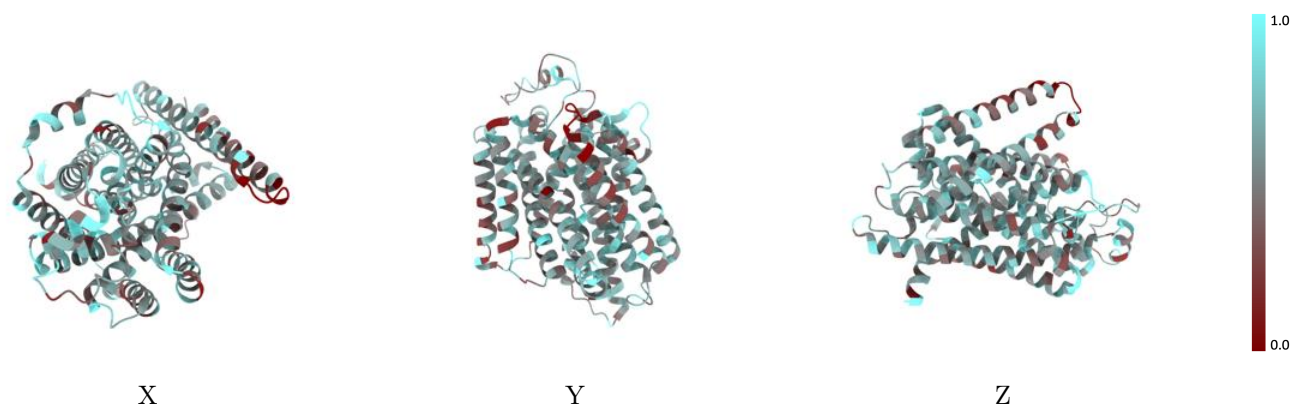
The images above show the 3D surface view of the map at the recommended contour level 0.2 at 50% transparency in yellow overlaid with a ribbon representation of the model coloured in blue. These images allow for the visual assessment of the quality of fit between the atomic model and the map.

9.2 Q-score mapped to coordinate model [i](#)



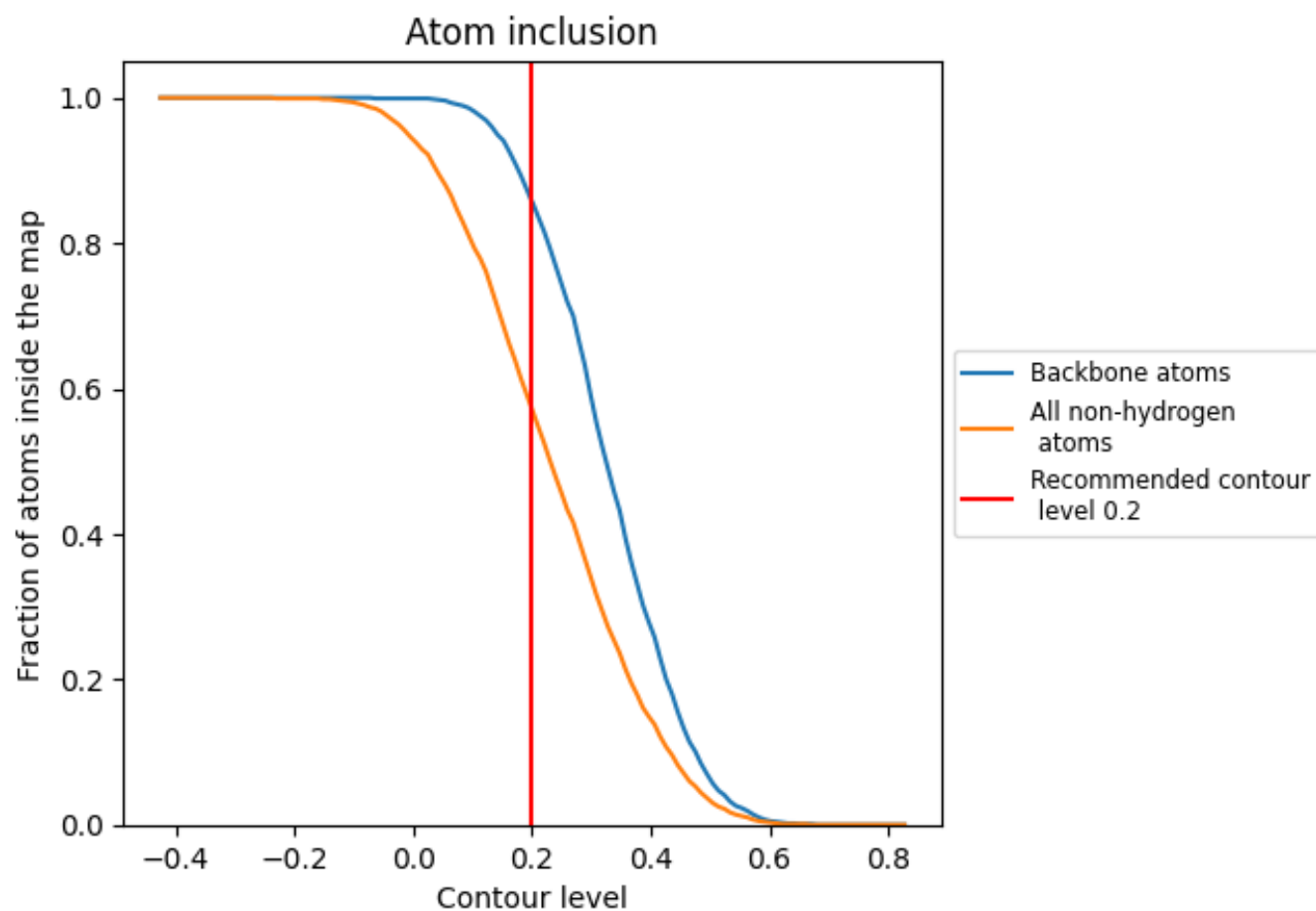
The images above show the model with each residue coloured according to its Q-score. This shows their resolvability in the map with higher Q-score values reflecting better resolvability. Please note: Q-score is calculating the resolvability of atoms, and thus high values are only expected at resolutions at which atoms can be resolved. Low Q-score values may therefore be expected for many entries.

9.3 Atom inclusion mapped to coordinate model [i](#)



The images above show the model with each residue coloured according to its atom inclusion. This shows to what extent they are inside the map at the recommended contour level (0.2).

9.4 Atom inclusion [i](#)



At the recommended contour level, 86% of all backbone atoms, 57% of all non-hydrogen atoms, are inside the map.

9.5 Map-model fit summary ⓘ

The table lists the average atom inclusion at the recommended contour level (0.2) and Q-score for the entire model and for each chain.

Chain	Atom inclusion	Q-score
All	<div></div> 0.5720	<div></div> 0.2790
A	<div></div> 0.5720	<div></div> 0.2790

