



## Full wwPDB EM Validation Report ⓘ

Jun 16, 2025 – 05:44 PM JST

PDB ID : 7E8T / pdb\_00007e8t  
EMDB ID : EMD-31022  
Title : Monomer of Ypt32-TRAPP2  
Authors : Mi, C.C.; Sui, S.F.  
Deposited on : 2021-03-02  
Resolution : 3.80 Å(reported)

This is a Full wwPDB EM Validation Report for a publicly released PDB entry.

We welcome your comments at [validation@mail.wwpdb.org](mailto:validation@mail.wwpdb.org)

A user guide is available at

<https://www.wwpdb.org/validation/2017/EMValidationReportHelp>

with specific help available everywhere you see the ⓘ symbol.

The types of validation reports are described at

<http://www.wwpdb.org/validation/2017/FAQs#types>.

---

The following versions of software and data (see [references ⓘ](#)) were used in the production of this report:

EMDB validation analysis : 0.0.1.dev118  
MolProbity : 4-5-2 with Phenix2.0rc1  
Percentile statistics : 20231227.v01 (using entries in the PDB archive December 27th 2023)  
MapQ : 1.9.13  
Ideal geometry (proteins) : Engh & Huber (2001)  
Ideal geometry (DNA, RNA) : Parkinson et al. (1996)  
Validation Pipeline (wwPDB-VP) : 2.44

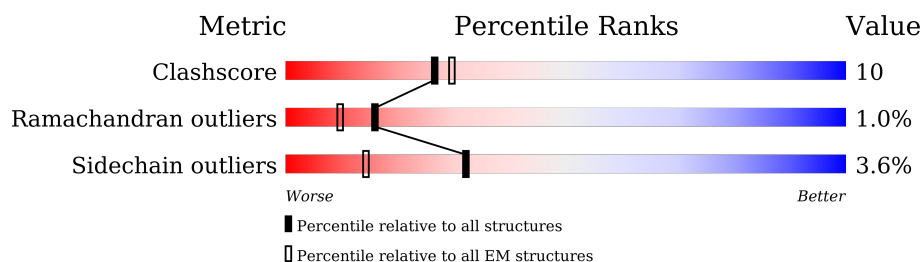
# 1 Overall quality at a glance

The following experimental techniques were used to determine the structure:

*ELECTRON MICROSCOPY*

The reported resolution of this entry is 3.80 Å.

Percentile scores (ranging between 0-100) for global validation metrics of the entry are shown in the following graphic. The table shows the number of entries on which the scores are based.



Metric	Whole archive (#Entries)	EM structures (#Entries)
Clashscore	210492	15764
Ramachandran outliers	207382	16835
Sidechain outliers	206894	16415

The table below summarises the geometric issues observed across the polymeric chains and their fit to the map. The red, orange, yellow and green segments of the bar indicate the fraction of residues that contain outliers for  $\geq 3$ , 2, 1 and 0 types of geometric quality criteria respectively. A grey segment represents the fraction of residues that are not modelled. The numeric value for each fraction is indicated below the corresponding segment, with a dot representing fractions  $\leq 5\%$ . The upper red bar (where present) indicates the fraction of residues that have poor fit to the EM map (all-atom inclusion  $< 40\%$ ). The numeric value is given above the bar.

Mol	Chain	Length	Quality of chain
1	L	222	
2	I	1102	
3	J	1289	
4	K	560	
5	B	268	
6	G	283	
7	E	219	
8	H	175	

*Continued on next page...*

Continued from previous page...

Mol	Chain	Length	Quality of chain
9	A	152	<div><div></div><div>20%</div><div></div><div>76%</div><div></div><div>18%</div><div></div><div>• 5%</div></div>
10	D	159	<div><div></div><div>•</div><div></div><div>65%</div><div></div><div>31%</div><div></div><div>• •</div></div>
11	C	193	<div><div></div><div>•</div><div></div><div>81%</div><div></div><div>13%</div><div></div><div>• •</div></div>
11	F	193	<div><div></div><div>•</div><div></div><div>80%</div><div></div><div>13%</div><div></div><div>• 5%</div></div>

## 2 Entry composition

There are 11 unique types of molecules in this entry. The entry contains 24894 atoms, of which 0 are hydrogens and 0 are deuteriums.

In the tables below, the AltConf column contains the number of residues with at least one atom in alternate conformation and the Trace column contains the number of residues modelled with at most 2 atoms.

- Molecule 1 is a protein called GTP-binding protein YPT32/YPT11.

Mol	Chain	Residues	Atoms					AltConf	Trace
1	L	194	Total	C	N	O	S	0	0
			1484	930	254	296	4		

- Molecule 2 is a protein called Trafficking protein particle complex II-specific subunit 130.

Mol	Chain	Residues	Atoms					AltConf	Trace
2	I	788	Total	C	N	O	S	0	0
			4199	2553	811	833	2		

There is a discrepancy between the modelled and reference sequences:

Chain	Residue	Modelled	Actual	Comment	Reference
I	464	LYS	TRP	conflict	UNP Q03660

- Molecule 3 is a protein called Trafficking protein particle complex II-specific subunit 120.

Mol	Chain	Residues	Atoms					AltConf	Trace
3	J	882	Total	C	N	O	S	0	0
			6452	4114	1113	1206	19		

- Molecule 4 is a protein called Trafficking protein particle complex II-specific subunit 65.

Mol	Chain	Residues	Atoms					AltConf	Trace
4	K	251	Total	C	N	O	S	0	0
			1649	1041	291	315	2		

- Molecule 5 is a protein called Trafficking protein particle complex subunit 33.

Mol	Chain	Residues	Atoms					AltConf	Trace
5	B	197	Total	C	N	O	S	0	0
			1590	1027	268	287	8		

- Molecule 6 is a protein called Trafficking protein particle complex subunit 31.

Mol	Chain	Residues	Atoms					AltConf	Trace
6	G	202	Total	C	N	O	S	0	0
			1624	1035	280	300	9		

There is a discrepancy between the modelled and reference sequences:

Chain	Residue	Modelled	Actual	Comment	Reference
G	108	SER	VAL	conflict	UNP Q03337

- Molecule 7 is a protein called Trafficking protein particle complex subunit 23.

Mol	Chain	Residues	Atoms					AltConf	Trace
7	E	163	Total	C	N	O	S	0	0
			1317	851	210	246	10		

- Molecule 8 is a protein called Trafficking protein particle complex subunit 20.

Mol	Chain	Residues	Atoms					AltConf	Trace
8	H	147	Total	C	N	O	S	0	0
			1180	763	195	217	5		

- Molecule 9 is a protein called TRAPP-associated protein TCA17.

Mol	Chain	Residues	Atoms					AltConf	Trace
9	A	144	Total	C	N	O	S	0	0
			1160	753	182	221	4		

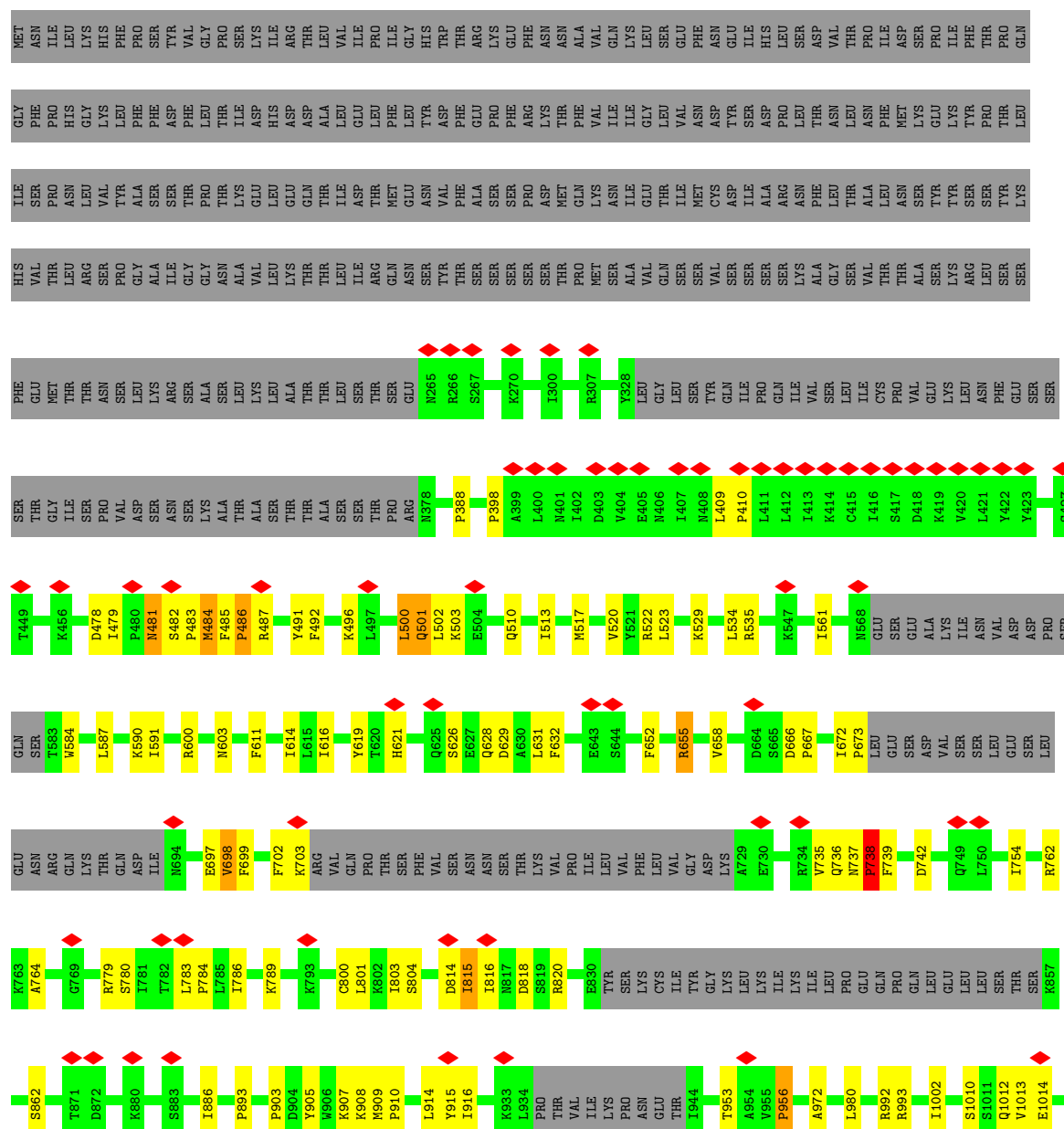
- Molecule 10 is a protein called Trafficking protein particle complex subunit BET5.

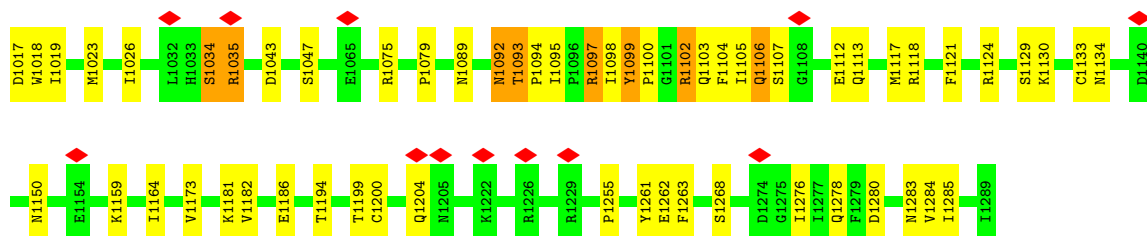
Mol	Chain	Residues	Atoms					AltConf	Trace
10	D	156	Total	C	N	O	S	0	0
			1273	813	216	238	6		

- Molecule 11 is a protein called Trafficking protein particle complex subunit BET3.

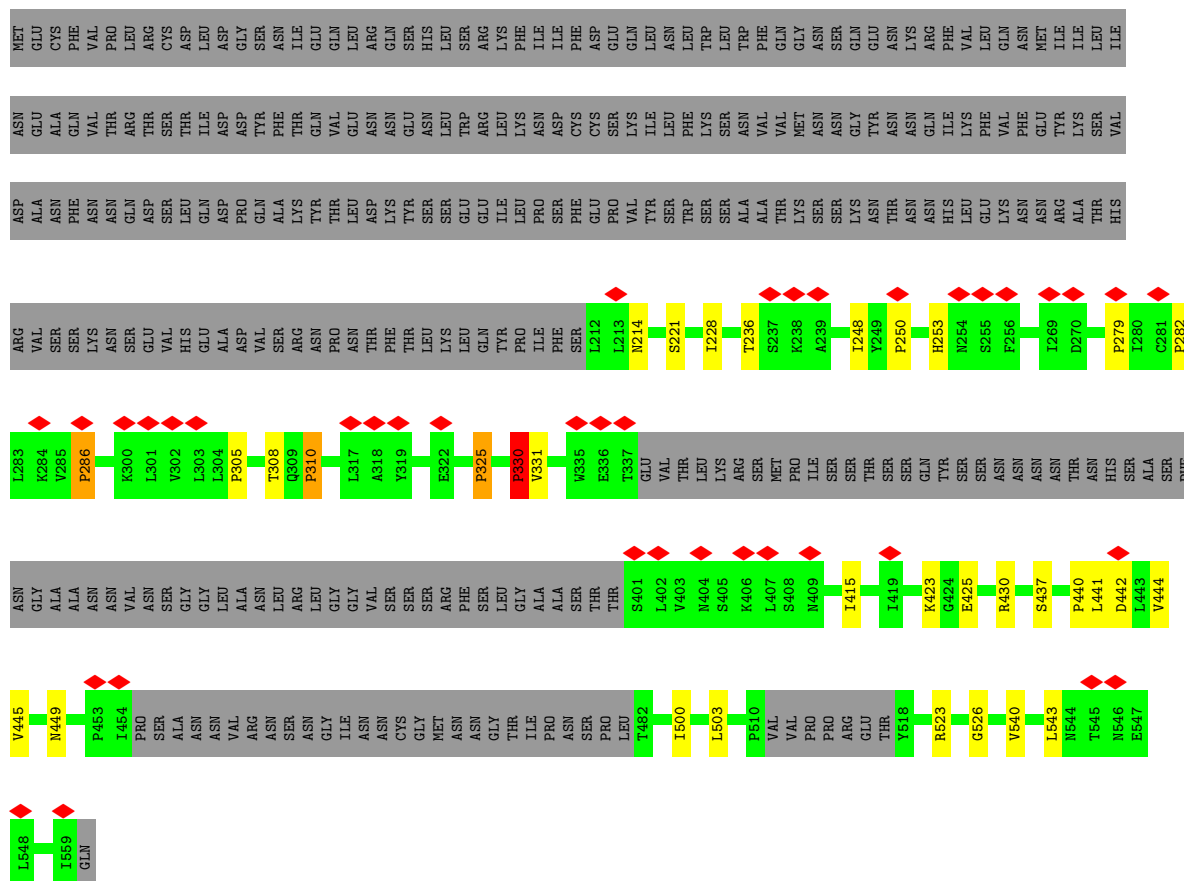
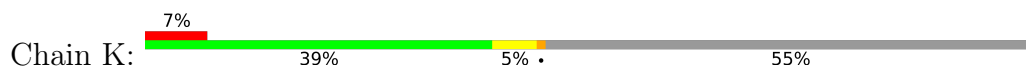
Mol	Chain	Residues	Atoms					AltConf	Trace
11	F	183	Total	C	N	O	S	0	0
			1478	945	243	279	11		
11	C	185	Total	C	N	O	S	0	0
			1488	950	242	285	11		



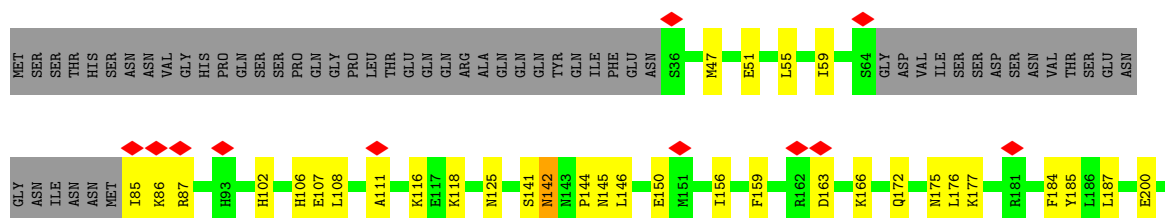




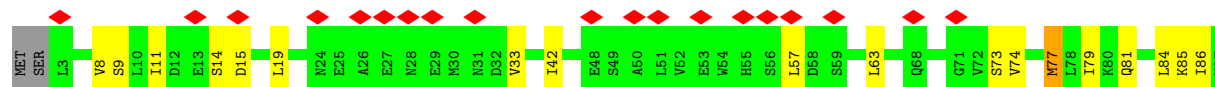
• Molecule 4: Trafficking protein particle complex II-specific subunit 65

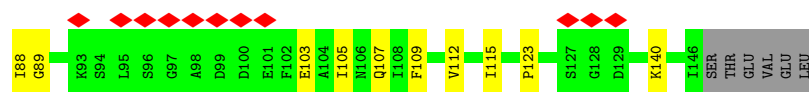


• Molecule 5: Trafficking protein particle complex subunit 33

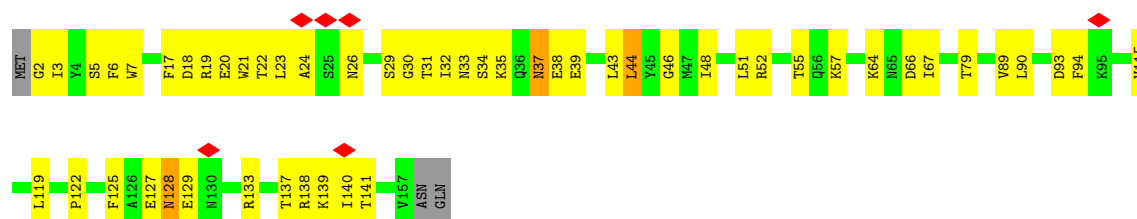




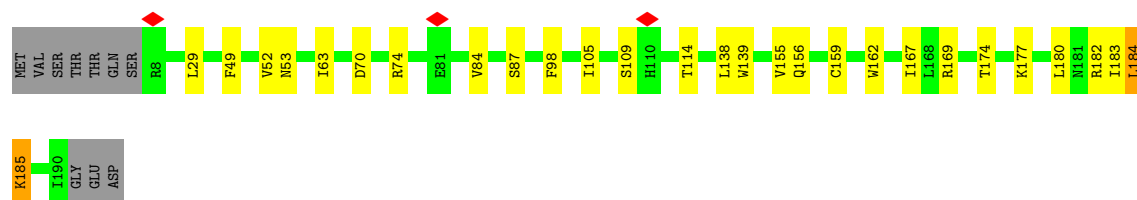
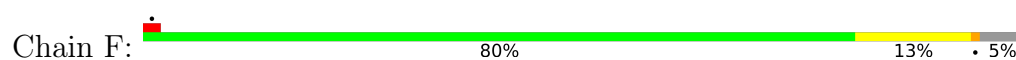




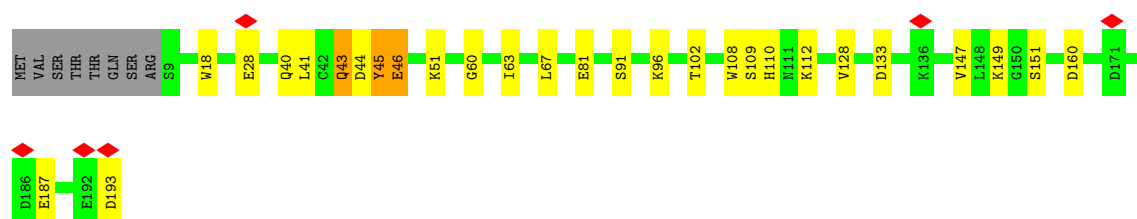
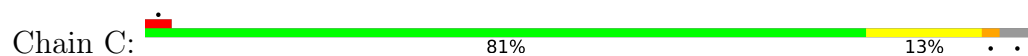
- Molecule 10: Trafficking protein particle complex subunit BET5



- Molecule 11: Trafficking protein particle complex subunit BET3



- Molecule 11: Trafficking protein particle complex subunit BET3



## 4 Experimental information

Property	Value	Source
EM reconstruction method	SINGLE PARTICLE	Depositor
Imposed symmetry	POINT, Not provided	
Number of particles used	81870	Depositor
Resolution determination method	FSC 0.143 CUT-OFF	Depositor
CTF correction method	PHASE FLIPPING AND AMPLITUDE CORRECTION	Depositor
Microscope	FEI TITAN KRIOS	Depositor
Voltage (kV)	300	Depositor
Electron dose ( $e^-/\text{\AA}^2$ )	50	Depositor
Minimum defocus (nm)	Not provided	
Maximum defocus (nm)	Not provided	
Magnification	Not provided	
Image detector	GATAN K3 (6k x 4k)	Depositor
Maximum map value	0.048	Depositor
Minimum map value	-0.025	Depositor
Average map value	0.000	Depositor
Map value standard deviation	0.001	Depositor
Recommended contour level	0.009	Depositor
Map size (Å)	521.82, 521.82, 521.82	wwPDB
Map dimensions	600, 600, 600	wwPDB
Map angles (°)	90.0, 90.0, 90.0	wwPDB
Pixel spacing (Å)	0.8697, 0.8697, 0.8697	Depositor

## 5 Model quality

### 5.1 Standard geometry

The Z score for a bond length (or angle) is the number of standard deviations the observed value is removed from the expected value. A bond length (or angle) with  $|Z| > 5$  is considered an outlier worth inspection. RMSZ is the root-mean-square of all Z scores of the bond lengths (or angles).

Mol	Chain	Bond lengths		Bond angles	
		RMSZ	# $ Z  > 5$	RMSZ	# $ Z  > 5$
1	L	0.76	0/1507	1.13	7/2038 (0.3%)
2	I	0.32	0/4219	0.77	17/5852 (0.3%)
3	J	0.47	2/6562 (0.0%)	0.96	24/8927 (0.3%)
4	K	0.32	0/1663	0.90	10/2268 (0.4%)
5	B	0.41	0/1617	0.91	5/2174 (0.2%)
6	G	0.41	0/1658	0.85	1/2236 (0.0%)
7	E	0.51	0/1341	0.82	0/1807
8	H	0.42	0/1211	0.92	1/1643 (0.1%)
9	A	0.35	0/1180	0.88	1/1592 (0.1%)
10	D	0.60	0/1302	0.94	3/1758 (0.2%)
11	C	0.42	0/1515	0.88	2/2049 (0.1%)
11	F	0.42	0/1505	0.80	1/2035 (0.0%)
All	All	0.45	2/25280 (0.0%)	0.90	72/34379 (0.2%)

Chiral center outliers are detected by calculating the chiral volume of a chiral center and verifying if the center is modelled as a planar moiety or with the opposite hand. A planarity outlier is detected by checking planarity of atoms in a peptide group, atoms in a mainchain group or atoms of a sidechain that are expected to be planar.

Mol	Chain	#Chirality outliers	#Planarity outliers
11	C	0	1

All (2) bond length outliers are listed below:

Mol	Chain	Res	Type	Atoms	Z	Observed(Å)	Ideal(Å)
3	J	1100	PRO	N-CD	-10.22	1.33	1.47
3	J	738	PRO	N-CD	-7.25	1.37	1.47

All (72) bond angle outliers are listed below:

Mol	Chain	Res	Type	Atoms	Z	Observed(°)	Ideal(°)
4	K	305	PRO	N-CA-CB	13.45	110.45	102.92
2	I	649	PRO	N-CA-CB	11.96	110.78	102.65

*Continued on next page...*

*Continued from previous page...*

Mol	Chain	Res	Type	Atoms	Z	Observed(°)	Ideal(°)
2	I	346	PRO	N-CA-CB	8.65	112.33	103.25
3	J	398	PRO	N-CA-CB	8.30	110.66	103.36
4	K	325	PRO	N-CA-CB	8.08	111.73	103.25
2	I	483	PRO	N-CA-CB	8.00	111.65	103.25
4	K	330	PRO	N-CA-CB	7.80	111.44	103.25
1	L	199	PRO	N-CA-CB	7.74	111.38	103.25
2	I	721	PRO	N-CA-CB	7.43	110.24	103.33
4	K	310	PRO	N-CA-CB	7.37	110.99	103.25
3	J	1255	PRO	N-CA-CB	7.36	110.52	102.72
4	K	286	PRO	N-CA-CB	7.25	110.86	103.25
2	I	976	PRO	N-CA-CB	7.17	110.78	103.25
2	I	1076	PRO	N-CA-CB	7.14	110.75	103.25
2	I	252	PRO	N-CA-CB	7.07	110.67	103.25
4	K	282	PRO	N-CA-CB	7.07	110.67	103.25
2	I	572	PRO	N-CA-CB	7.07	110.67	103.25
3	J	667	PRO	N-CA-CB	7.03	110.00	103.46
2	I	639	PRO	N-CA-CB	6.80	110.72	103.52
3	J	481	ASN	CA-C-N	-6.79	105.24	121.80
3	J	481	ASN	C-N-CA	-6.79	105.24	121.80
3	J	956	PRO	N-CA-CB	6.78	110.36	103.25
4	K	279	PRO	N-CA-CB	6.76	110.35	103.25
2	I	1067	PRO	N-CA-CB	6.67	110.77	103.23
2	I	704	PRO	N-CA-CB	6.63	110.72	103.23
3	J	673	PRO	N-CA-CB	6.52	110.17	103.00
1	L	46	ILE	N-CA-C	-6.50	107.16	113.53
3	J	410	PRO	N-CA-CB	6.47	110.04	103.25
8	H	26	PRO	N-CA-CB	6.40	109.97	103.25
3	J	736	GLN	N-CA-C	-6.38	99.43	108.23
9	A	33	VAL	CA-CB-CG1	6.36	121.22	110.40
3	J	436	PRO	N-CA-CB	6.36	110.26	103.52
4	K	250	PRO	N-CA-CB	6.35	110.25	103.52
2	I	980	PRO	N-CA-CB	6.29	109.86	103.25
3	J	815	ILE	CG1-CB-CG2	-6.27	91.90	110.70
3	J	1092	ASN	CA-C-O	-6.25	114.82	121.88
3	J	1100	PRO	CA-N-CD	6.24	120.73	112.00
3	J	388	PRO	N-CA-CB	6.06	110.23	103.44
1	L	158	LEU	N-CA-C	-5.90	106.70	114.31
3	J	738	PRO	N-CA-CB	-5.88	97.07	103.25
2	I	970	PRO	N-CA-CB	5.83	110.67	103.15
3	J	1035	ARG	CA-CB-CG	5.76	125.63	114.10
5	B	144	PRO	CA-C-N	5.68	130.88	122.82
5	B	144	PRO	C-N-CA	5.68	130.88	122.82

*Continued on next page...*

*Continued from previous page...*

Mol	Chain	Res	Type	Atoms	Z	Observed(°)	Ideal(°)
3	J	1034	SER	CA-C-N	5.63	131.39	122.61
3	J	1034	SER	C-N-CA	5.63	131.39	122.61
5	B	150	GLU	CA-CB-CG	5.62	125.34	114.10
3	J	783	LEU	CA-CB-CG	5.62	135.96	116.30
1	L	129	ASP	N-CA-C	-5.61	105.32	111.82
1	L	47	GLY	CA-C-O	-5.59	117.76	122.29
3	J	591	ILE	CA-C-N	-5.59	111.66	122.06
3	J	591	ILE	C-N-CA	-5.59	111.66	122.06
4	K	441	LEU	CA-C-N	5.59	132.21	121.54
4	K	441	LEU	C-N-CA	5.59	132.21	121.54
11	F	155	VAL	CA-CB-CG1	5.57	119.87	110.40
11	C	45	TYR	N-CA-C	-5.46	105.41	111.36
1	L	113	GLU	CA-C-N	5.33	131.73	121.54
1	L	113	GLU	C-N-CA	5.33	131.73	121.54
6	G	175	LYS	CB-CG-CD	5.33	123.56	111.30
3	J	1100	PRO	N-CA-CB	-5.32	97.22	103.23
3	J	479	ILE	O-C-N	-5.30	115.06	121.10
3	J	1199	THR	OG1-CB-CG2	-5.25	98.81	109.30
10	D	30	GLY	CA-C-O	-5.21	117.32	120.91
10	D	94	PHE	CA-C-N	5.18	131.19	123.05
10	D	94	PHE	C-N-CA	5.18	131.19	123.05
2	I	975	VAL	CA-C-N	5.17	126.30	119.84
2	I	975	VAL	C-N-CA	5.17	126.30	119.84
5	B	142	ASN	CA-C-N	5.17	134.40	121.80
5	B	142	ASN	C-N-CA	5.17	134.40	121.80
2	I	482	CYS	CA-C-N	5.08	126.20	119.84
2	I	482	CYS	C-N-CA	5.08	126.20	119.84
11	C	28	GLU	CA-CB-CG	5.08	124.25	114.10

There are no chirality outliers.

All (1) planarity outliers are listed below:

Mol	Chain	Res	Type	Group
11	C	43	GLN	Mainchain

## 5.2 Too-close contacts ⓘ

In the following table, the Non-H and H(model) columns list the number of non-hydrogen atoms and hydrogen atoms in the chain respectively. The H(added) column lists the number of hydrogen atoms added and optimized by MolProbity. The Clashes column lists the number of clashes within the asymmetric unit, whereas Symm-Clashes lists symmetry-related clashes.

Mol	Chain	Non-H	H(model)	H(added)	Clashes	Symm-Clashes
1	L	1484	0	1410	47	0
2	I	4199	0	2172	26	0
3	J	6452	0	5798	230	0
4	K	1649	0	1338	22	0
5	B	1590	0	1612	31	0
6	G	1624	0	1601	16	0
7	E	1317	0	1323	26	0
8	H	1180	0	1132	15	0
9	A	1160	0	1184	20	0
10	D	1273	0	1245	25	0
11	C	1488	0	1487	27	0
11	F	1478	0	1487	21	0
All	All	24894	0	21789	454	0

The all-atom clashscore is defined as the number of clashes found per 1000 atoms (including hydrogen atoms). The all-atom clashscore for this structure is 10.

All (454) close contacts within the same asymmetric unit are listed below, sorted by their clash magnitude.

Atom-1	Atom-2	Interatomic distance (Å)	Clash overlap (Å)
3:J:903:PRO:HB3	3:J:1098:ILE:CG1	1.13	1.58
3:J:903:PRO:CA	3:J:1098:ILE:HG21	1.37	1.50
3:J:915:TYR:H	3:J:1102:ARG:NH2	1.09	1.45
3:J:903:PRO:CB	3:J:1098:ILE:HG12	1.44	1.44
3:J:915:TYR:N	3:J:1102:ARG:HH22	1.07	1.39
3:J:916:ILE:N	3:J:1102:ARG:HH12	1.21	1.36
3:J:1098:ILE:HD11	3:J:1099:TYR:CE2	1.66	1.30
3:J:903:PRO:HA	3:J:1098:ILE:CG2	1.62	1.28
3:J:907:LYS:NZ	3:J:1098:ILE:HG13	1.49	1.26
3:J:1098:ILE:HD11	3:J:1099:TYR:CD2	1.77	1.20
1:L:129:ASP:OD1	1:L:158:LEU:HD23	1.41	1.19
3:J:903:PRO:CA	3:J:1098:ILE:CG2	2.19	1.18
3:J:903:PRO:CB	3:J:1098:ILE:CG1	2.06	1.17
3:J:1094:PRO:HG3	3:J:1118:ARG:CZ	1.74	1.17
3:J:916:ILE:N	3:J:1102:ARG:NH1	1.93	1.16
3:J:1098:ILE:CD1	3:J:1099:TYR:CD2	2.33	1.12
3:J:1094:PRO:HG3	3:J:1118:ARG:NE	1.64	1.12
3:J:481:ASN:OD1	3:J:483:PRO:HD2	1.49	1.11
3:J:903:PRO:HG3	3:J:1098:ILE:HB	1.25	1.10
3:J:1094:PRO:HG3	3:J:1118:ARG:NH2	1.66	1.10
3:J:907:LYS:HZ1	3:J:1098:ILE:HG13	0.99	1.09
3:J:1094:PRO:HB3	3:J:1118:ARG:CG	1.81	1.09

*Continued on next page...*

*Continued from previous page...*

Atom-1	Atom-2	Interatomic distance (Å)	Clash overlap (Å)
3:J:903:PRO:HB3	3:J:1098:ILE:CD1	1.84	1.07
3:J:1094:PRO:HB3	3:J:1118:ARG:HG2	1.28	1.07
3:J:910:PRO:HD3	3:J:1095:ILE:HG21	1.31	1.06
3:J:903:PRO:HG3	3:J:1098:ILE:CB	1.84	1.06
11:F:182:ARG:HD3	11:F:184:LEU:HD13	1.33	1.06
3:J:903:PRO:HA	3:J:1098:ILE:HG21	1.19	1.04
3:J:907:LYS:NZ	3:J:1098:ILE:CG1	2.19	1.04
3:J:903:PRO:N	3:J:1098:ILE:HG21	1.71	1.03
3:J:916:ILE:H	3:J:1102:ARG:NH1	1.47	1.03
11:F:182:ARG:HD3	11:F:184:LEU:CD1	1.89	1.02
3:J:903:PRO:CB	3:J:1098:ILE:HG21	1.90	1.01
3:J:915:TYR:C	3:J:1102:ARG:HH12	1.69	1.00
3:J:800:CYS:SG	3:J:814:ASP:HA	2.01	1.00
3:J:909:MET:HE2	3:J:1121:PHE:HB2	1.45	0.98
3:J:914:LEU:C	3:J:1102:ARG:HH22	1.72	0.97
3:J:907:LYS:HD2	3:J:1097:ARG:HG3	1.46	0.96
3:J:1094:PRO:CG	3:J:1118:ARG:CZ	2.44	0.96
3:J:903:PRO:HA	3:J:1098:ILE:HG23	1.47	0.95
3:J:907:LYS:HZ2	3:J:1098:ILE:N	1.67	0.93
3:J:907:LYS:HZ3	3:J:1098:ILE:CG1	1.81	0.92
3:J:1094:PRO:CG	3:J:1118:ARG:NE	2.31	0.92
3:J:915:TYR:N	3:J:1102:ARG:NH2	1.82	0.92
3:J:1094:PRO:CG	3:J:1118:ARG:NH2	2.33	0.91
3:J:914:LEU:CB	3:J:1102:ARG:NH2	2.34	0.91
3:J:903:PRO:CG	3:J:1098:ILE:HG21	2.01	0.91
3:J:801:LEU:O	3:J:803:ILE:HD12	1.71	0.91
1:L:156:SER:OG	1:L:158:LEU:HG	1.71	0.91
3:J:500:LEU:HD12	3:J:502:LEU:HG	1.53	0.90
3:J:907:LYS:NZ	3:J:1098:ILE:H	1.68	0.90
9:A:77:MET:SD	9:A:109:PHE:CD2	2.65	0.90
3:J:1094:PRO:HG3	3:J:1118:ARG:HE	1.33	0.90
3:J:1013:VAL:HG23	4:K:425:GLU:CD	1.97	0.89
3:J:801:LEU:HD23	3:J:801:LEU:H	1.38	0.89
3:J:916:ILE:H	3:J:1102:ARG:HH12	0.95	0.89
1:L:172:VAL:CG1	3:J:703:LYS:HE3	2.01	0.89
3:J:903:PRO:CG	3:J:1098:ILE:CB	2.52	0.88
3:J:907:LYS:HZ2	3:J:1098:ILE:H	0.91	0.87
3:J:903:PRO:HB3	3:J:1098:ILE:CB	2.04	0.86
1:L:129:ASP:OD1	1:L:158:LEU:CD2	2.23	0.86
3:J:903:PRO:CB	3:J:1098:ILE:CB	2.53	0.86
3:J:1094:PRO:CB	3:J:1118:ARG:HG2	2.05	0.86

*Continued on next page...*



*Continued from previous page...*

Atom-1	Atom-2	Interatomic distance (Å)	Clash overlap (Å)
3:J:1098:ILE:HD12	3:J:1099:TYR:CD2	2.12	0.84
3:J:903:PRO:CB	3:J:1098:ILE:CG2	2.53	0.84
1:L:172:VAL:HG12	3:J:703:LYS:CE	2.07	0.84
3:J:1094:PRO:HG3	3:J:1118:ARG:HH21	1.38	0.84
11:C:45:TYR:O	11:C:46:GLU:OE1	1.96	0.83
9:A:77:MET:HG3	9:A:86:ILE:HG23	1.60	0.82
3:J:1094:PRO:HB3	3:J:1118:ARG:CD	2.11	0.81
1:L:169:GLU:OE1	3:J:698:VAL:CG1	2.28	0.81
3:J:915:TYR:H	3:J:1102:ARG:CZ	1.91	0.81
3:J:903:PRO:CG	3:J:1098:ILE:CG2	2.60	0.80
3:J:903:PRO:HG3	3:J:1098:ILE:CG2	2.12	0.80
3:J:800:CYS:SG	3:J:814:ASP:OD1	2.39	0.79
3:J:910:PRO:HD3	3:J:1095:ILE:CG2	2.11	0.79
3:J:481:ASN:OD1	3:J:482:SER:N	2.16	0.79
2:I:459:TYR:O	2:I:464:LYS:HB2	1.84	0.78
3:J:1094:PRO:CB	3:J:1118:ARG:CG	2.61	0.78
3:J:1094:PRO:CD	3:J:1118:ARG:NH2	2.47	0.78
1:L:172:VAL:HG11	3:J:703:LYS:HE3	1.65	0.77
2:I:853:PHE:HB2	2:I:974:THR:O	1.84	0.77
3:J:1013:VAL:CG2	4:K:425:GLU:CD	2.57	0.77
3:J:1094:PRO:HD3	3:J:1118:ARG:CZ	2.14	0.76
3:J:903:PRO:CG	3:J:1098:ILE:HB	2.10	0.76
3:J:910:PRO:CD	3:J:1095:ILE:HG21	2.12	0.76
3:J:1094:PRO:HB3	3:J:1118:ARG:NE	2.00	0.76
1:L:172:VAL:CG1	3:J:703:LYS:CE	2.63	0.75
1:L:133:LEU:HD22	3:J:1106:GLN:HE22	1.49	0.75
3:J:1094:PRO:CB	3:J:1118:ARG:NE	2.48	0.75
1:L:133:LEU:HD23	1:L:133:LEU:N	2.01	0.75
3:J:655:ARG:O	3:J:815:ILE:CG2	2.35	0.74
1:L:169:GLU:OE1	3:J:698:VAL:HG11	1.88	0.74
3:J:801:LEU:O	3:J:803:ILE:CD1	2.35	0.74
1:L:96:SER:O	1:L:135:ALA:HB2	1.88	0.74
3:J:1263:PHE:O	3:J:1283:ASN:HA	1.87	0.73
3:J:500:LEU:CD1	3:J:502:LEU:HG	2.18	0.73
3:J:501:GLN:HB3	3:J:503:LYS:HE3	1.69	0.73
3:J:735:VAL:HG23	3:J:735:VAL:O	1.89	0.73
3:J:655:ARG:HG3	3:J:655:ARG:HH11	1.54	0.72
3:J:1094:PRO:HD3	3:J:1118:ARG:NH2	2.04	0.72
3:J:1094:PRO:CD	3:J:1118:ARG:CZ	2.68	0.72
5:B:102:HIS:CD2	10:D:122:PRO:HB3	2.25	0.71
3:J:914:LEU:CA	3:J:1102:ARG:HH22	2.04	0.71

*Continued on next page...*

*Continued from previous page...*

Atom-1	Atom-2	Interatomic distance (Å)	Clash overlap (Å)
3:J:903:PRO:CA	3:J:1098:ILE:HG12	2.20	0.71
9:A:77:MET:HG3	9:A:86:ILE:CG2	2.19	0.71
3:J:903:PRO:CG	3:J:1098:ILE:HD13	2.20	0.71
3:J:903:PRO:CB	3:J:1098:ILE:CD1	2.53	0.70
3:J:907:LYS:HZ3	3:J:1098:ILE:HG12	1.56	0.70
3:J:1106:GLN:OE1	3:J:1106:GLN:HA	1.91	0.70
3:J:907:LYS:HD2	3:J:1097:ARG:CG	2.19	0.69
11:C:45:TYR:CE2	11:C:51:LYS:HB3	2.27	0.69
1:L:172:VAL:HG12	3:J:703:LYS:NZ	2.07	0.69
3:J:903:PRO:CG	3:J:1098:ILE:CG1	2.71	0.69
7:E:53:LYS:HA	7:E:53:LYS:HZ3	1.59	0.68
3:J:915:TYR:N	3:J:1102:ARG:CZ	2.54	0.68
4:K:444:VAL:O	4:K:540:VAL:HA	1.93	0.68
3:J:903:PRO:CB	3:J:1098:ILE:HD13	2.23	0.68
3:J:903:PRO:CD	3:J:1098:ILE:HG21	2.24	0.68
3:J:915:TYR:CA	3:J:1102:ARG:HH12	2.06	0.68
3:J:909:MET:HE2	3:J:1121:PHE:CB	2.24	0.68
11:C:40:GLN:O	11:C:44:ASP:HB2	1.93	0.67
3:J:1261:TYR:O	3:J:1285:ILE:HA	1.95	0.67
11:C:45:TYR:C	11:C:46:GLU:OE1	2.37	0.67
2:I:299:PHE:O	2:I:302:ALA:HB3	1.95	0.67
1:L:172:VAL:HG12	3:J:703:LYS:HZ1	1.59	0.67
3:J:801:LEU:HD23	3:J:801:LEU:N	2.09	0.66
3:J:914:LEU:CA	3:J:1102:ARG:NH2	2.59	0.66
5:B:239:LEU:O	5:B:257:GLY:C	2.39	0.65
3:J:501:GLN:HG3	3:J:503:LYS:HE3	1.79	0.63
5:B:184:PHE:H	5:B:262:VAL:HG22	1.63	0.63
3:J:655:ARG:NH1	3:J:816:ILE:CD1	2.62	0.62
5:B:176:LEU:HA	5:B:185:TYR:O	1.99	0.62
9:A:77:MET:SD	9:A:109:PHE:CG	2.92	0.62
3:J:1103:GLN:CD	3:J:1103:GLN:H	2.08	0.62
1:L:39:ASN:HB2	7:E:32:GLU:OE2	1.99	0.62
3:J:655:ARG:NH1	3:J:816:ILE:HD13	2.15	0.62
5:B:159:PHE:O	5:B:163:ASP:HB2	2.00	0.61
11:F:182:ARG:HD3	11:F:184:LEU:HD11	1.80	0.61
4:K:445:VAL:HG12	4:K:540:VAL:HG12	1.83	0.61
7:E:52:PRO:O	7:E:54:ALA:N	2.33	0.61
3:J:628:GLN:HA	3:J:631:LEU:HB3	1.83	0.61
11:F:182:ARG:CD	11:F:184:LEU:CD1	2.75	0.60
3:J:501:GLN:HB3	3:J:503:LYS:HG3	1.83	0.60
3:J:655:ARG:HG3	3:J:655:ARG:NH1	2.14	0.60

*Continued on next page...*

*Continued from previous page...*

Atom-1	Atom-2	Interatomic distance (Å)	Clash overlap (Å)
3:J:915:TYR:C	3:J:1102:ARG:NH1	2.49	0.60
3:J:1094:PRO:CG	3:J:1118:ARG:HE	2.04	0.59
3:J:1095:ILE:HG22	3:J:1095:ILE:O	2.02	0.59
8:H:13:ASN:HD21	8:H:153:THR:HG22	1.65	0.59
3:J:621:HIS:ND1	6:G:30:GLN:OE1	2.35	0.59
7:E:55:LEU:N	7:E:55:LEU:HD22	2.17	0.59
3:J:626:SER:HA	3:J:629:ASP:HB2	1.85	0.59
3:J:903:PRO:HG2	3:J:1098:ILE:HD13	1.83	0.59
3:J:1013:VAL:HG22	4:K:425:GLU:OE1	2.03	0.59
3:J:628:GLN:O	3:J:632:PHE:HB2	2.03	0.59
3:J:903:PRO:HB3	3:J:1098:ILE:HG12	0.60	0.58
2:I:784:PHE:O	2:I:838:CYS:HA	2.04	0.58
3:J:655:ARG:CZ	3:J:816:ILE:HD13	2.32	0.58
5:B:175:ASN:HB3	5:B:187:LEU:HB2	1.85	0.58
1:L:158:LEU:HD12	1:L:158:LEU:C	2.29	0.58
3:J:909:MET:CE	3:J:1121:PHE:HB2	2.26	0.58
5:B:166:LYS:NZ	5:B:172:GLN:OE1	2.37	0.58
5:B:59:ILE:CG1	11:C:44:ASP:OD2	2.51	0.57
1:L:98:SER:HB2	1:L:135:ALA:HB1	1.86	0.57
3:J:1013:VAL:HG13	3:J:1019:ILE:HG21	1.86	0.57
10:D:52:ARG:NH1	10:D:66:ASP:OD2	2.37	0.57
3:J:737:ASN:HA	3:J:786:ILE:HG22	1.87	0.56
8:H:117:ASN:HB2	8:H:121:SER:HB3	1.88	0.56
3:J:915:TYR:CA	3:J:1102:ARG:NH1	2.68	0.56
3:J:611:PHE:HA	3:J:614:ILE:HG22	1.87	0.56
3:J:907:LYS:CD	3:J:1097:ARG:HG3	2.29	0.56
3:J:909:MET:CB	3:J:1095:ILE:HD12	2.36	0.56
3:J:501:GLN:CB	3:J:503:LYS:HE3	2.36	0.56
3:J:501:GLN:CG	3:J:503:LYS:HE3	2.36	0.56
11:F:138:LEU:O	11:F:169:ARG:NH1	2.39	0.56
3:J:1262:GLU:HA	3:J:1284:VAL:O	2.07	0.55
5:B:55:LEU:HD11	11:C:41:LEU:HD21	1.88	0.55
7:E:8:VAL:HB	7:E:17:TYR:HB3	1.88	0.55
11:C:108:TRP:HE1	11:C:112:LYS:HE2	1.72	0.55
1:L:156:SER:OG	1:L:158:LEU:CG	2.51	0.55
3:J:1103:GLN:H	3:J:1103:GLN:NE2	2.04	0.55
3:J:483:PRO:C	3:J:484:MET:SD	2.90	0.55
3:J:1043:ASP:HB3	3:J:1075:ARG:HG2	1.90	0.54
5:B:51:GLU:HB3	10:D:119:LEU:HD11	1.90	0.54
11:C:45:TYR:O	11:C:46:GLU:HB2	2.06	0.54
7:E:113:ASN:ND2	7:E:115:ASN:OD1	2.41	0.54

*Continued on next page...*

*Continued from previous page...*

Atom-1	Atom-2	Interatomic distance (Å)	Clash overlap (Å)
1:L:95:ILE:O	1:L:135:ALA:N	2.26	0.54
4:K:500:ILE:HA	4:K:526:GLY:HA2	1.89	0.54
11:C:18:TRP:NE1	11:C:96:LYS:O	2.35	0.53
3:J:492:PHE:O	3:J:496:LYS:NZ	2.41	0.53
5:B:59:ILE:HG13	11:C:44:ASP:OD2	2.07	0.53
9:A:63:LEU:HD11	9:A:105:ILE:HG22	1.91	0.53
1:L:172:VAL:CG1	3:J:703:LYS:NZ	2.72	0.53
9:A:77:MET:SD	9:A:109:PHE:HB3	2.49	0.53
11:C:109:SER:OG	11:C:110:HIS:N	2.42	0.53
3:J:1094:PRO:CG	3:J:1118:ARG:HH21	2.08	0.52
3:J:1017:ASP:N	3:J:1017:ASP:OD1	2.42	0.52
11:F:182:ARG:CD	11:F:184:LEU:HD11	2.38	0.52
10:D:6:PHE:O	10:D:18:ASP:HA	2.10	0.52
3:J:909:MET:HB3	3:J:1095:ILE:HD12	1.92	0.52
3:J:522:ARG:HE	3:J:523:LEU:HD22	1.73	0.52
6:G:47:SER:HB2	8:H:164:ARG:HH22	1.75	0.52
11:F:70:ASP:OD1	11:F:74:ARG:NH2	2.43	0.52
10:D:79:THR:HG22	10:D:89:VAL:HG12	1.90	0.52
3:J:1200:CYS:O	3:J:1204:GLN:NE2	2.42	0.52
5:B:146:LEU:O	9:A:81:GLN:NE2	2.42	0.51
7:E:7:LEU:HB3	7:E:141:VAL:HB	1.92	0.51
9:A:115:ILE:HD11	9:A:140:LYS:HB3	1.91	0.51
2:I:529:GLN:O	2:I:551:LYS:N	2.43	0.51
7:E:53:LYS:N	7:E:53:LYS:CE	2.73	0.51
1:L:45:THR:O	10:D:46:GLY:HA3	2.11	0.51
3:J:481:ASN:O	3:J:484:MET:SD	2.68	0.51
11:F:159:CYS:HA	11:F:180:LEU:HA	1.91	0.51
5:B:177:LYS:HB3	5:B:185:TYR:HB2	1.91	0.51
9:A:79:ILE:HG12	9:A:84:LEU:HB3	1.93	0.51
3:J:1034:SER:OG	3:J:1035:ARG:N	2.41	0.51
5:B:141:SER:OG	5:B:142:ASN:N	2.44	0.51
5:B:145:ASN:HB3	9:A:57:LEU:HA	1.93	0.51
1:L:43:LYS:HE2	1:L:70:ALA:HB2	1.91	0.51
3:J:1098:ILE:HD12	3:J:1099:TYR:CG	2.46	0.51
2:I:776:ILE:HB	2:I:783:PHE:HB2	1.93	0.50
3:J:485:PHE:HB2	3:J:486:PRO:HD3	1.93	0.50
1:L:26:LYS:HB3	1:L:92:VAL:HG11	1.94	0.50
2:I:1013:TYR:HA	2:I:1064:HIS:HA	1.93	0.50
6:G:163:SER:OG	6:G:164:ASN:N	2.44	0.50
11:C:45:TYR:CD2	11:C:51:LYS:HB3	2.46	0.50
5:B:85:ILE:O	5:B:87:ARG:NH1	2.44	0.50

*Continued on next page...*

*Continued from previous page...*

Atom-1	Atom-2	Interatomic distance (Å)	Clash overlap (Å)
7:E:66:THR:O	7:E:66:THR:OG1	2.30	0.50
3:J:584:TRP:CD1	3:J:587:LEU:H	2.29	0.50
4:K:442:ASP:HB2	4:K:543:LEU:HD12	1.93	0.50
7:E:53:LYS:N	7:E:53:LYS:HE2	2.26	0.50
8:H:11:LYS:O	8:H:11:LYS:HD3	2.11	0.50
3:J:801:LEU:N	3:J:801:LEU:CD2	2.73	0.50
6:G:276:ASP:OD1	6:G:276:ASP:N	2.43	0.50
7:E:53:LYS:N	7:E:53:LYS:NZ	2.60	0.50
3:J:1129:SER:OG	3:J:1130:LYS:NZ	2.43	0.49
9:A:14:SER:OG	9:A:15:ASP:N	2.45	0.49
1:L:136:VAL:HG13	1:L:137:PRO:HD2	1.94	0.49
3:J:1159:LYS:NZ	4:K:449:ASN:O	2.41	0.49
7:E:188:ASP:OD1	7:E:192:LYS:NZ	2.45	0.49
11:C:133:ASP:OD1	11:C:133:ASP:N	2.41	0.49
10:D:5:SER:OG	10:D:7:TRP:NE1	2.46	0.49
1:L:175:PHE:O	1:L:179:SER:N	2.43	0.49
3:J:655:ARG:NH1	3:J:816:ILE:HD11	2.27	0.49
3:J:818:ASP:HB3	3:J:820:ARG:HG2	1.93	0.49
5:B:47:MET:HE1	11:C:67:LEU:HB2	1.93	0.49
6:G:207:ASN:ND2	6:G:270:PHE:O	2.45	0.49
7:E:9:ILE:HA	7:E:15:LEU:HA	1.95	0.49
3:J:779:ARG:NH2	3:J:780:SER:O	2.45	0.49
5:B:233:SER:OG	5:B:234:GLU:N	2.42	0.49
6:G:227:VAL:HG22	6:G:230:GLU:HB2	1.94	0.49
10:D:2:GLY:N	10:D:93:ASP:OD2	2.46	0.49
2:I:803:GLU:O	2:I:855:LEU:HA	2.12	0.49
4:K:415:ILE:HD13	4:K:430:ARG:HG2	1.95	0.49
5:B:239:LEU:O	5:B:257:GLY:O	2.31	0.49
10:D:19:ARG:HA	10:D:31:THR:HG22	1.95	0.49
1:L:41:GLU:O	1:L:42:SER:HB2	2.12	0.48
3:J:738:PRO:HD3	3:J:786:ILE:H	1.79	0.48
11:C:149:LYS:NZ	11:C:160:ASP:OD1	2.44	0.48
1:L:128:SER:OG	1:L:156:SER:HA	2.12	0.48
3:J:907:LYS:NZ	3:J:1098:ILE:N	2.42	0.48
3:J:909:MET:HB2	3:J:1095:ILE:HG23	1.96	0.48
5:B:59:ILE:HG12	11:C:44:ASP:OD2	2.12	0.48
9:A:9:SER:HA	9:A:19:LEU:O	2.14	0.48
3:J:478:ASP:OD2	3:J:491:TYR:OH	2.28	0.48
3:J:1013:VAL:HA	4:K:425:GLU:OE2	2.13	0.48
3:J:1092:ASN:N	3:J:1092:ASN:HD22	2.12	0.48
3:J:658:VAL:HG23	3:J:739:PHE:HB3	1.96	0.48

*Continued on next page...*

*Continued from previous page...*

Atom-1	Atom-2	Interatomic distance (Å)	Clash overlap (Å)
3:J:903:PRO:CG	3:J:1098:ILE:CD1	2.85	0.48
6:G:254:ARG:HG2	6:G:264:THR:HG22	1.96	0.48
5:B:86:LYS:NZ	5:B:107:GLU:OE2	2.44	0.48
1:L:16:ILE:HA	1:L:88:GLY:O	2.13	0.48
10:D:64:LYS:NZ	11:C:81:GLU:OE2	2.42	0.48
11:C:193:ASP:OD1	11:C:193:ASP:N	2.46	0.48
2:I:461:GLN:C	2:I:463:ASN:H	2.22	0.48
2:I:772:SER:HB3	2:I:787:LEU:HB3	1.96	0.48
1:L:123:LEU:HB2	1:L:150:MET:HE2	1.95	0.47
3:J:915:TYR:N	3:J:1102:ARG:NH1	2.62	0.47
4:K:221:SER:O	4:K:228:ILE:HA	2.13	0.47
1:L:89:ALA:HB1	1:L:111:LEU:HD21	1.96	0.47
7:E:55:LEU:N	7:E:55:LEU:CD2	2.77	0.47
3:J:484:MET:SD	3:J:484:MET:N	2.88	0.47
10:D:37:ASN:HD22	10:D:37:ASN:HA	1.47	0.47
11:C:40:GLN:OE1	11:C:43:GLN:NE2	2.40	0.47
3:J:481:ASN:CG	3:J:482:SER:N	2.72	0.47
3:J:628:GLN:O	3:J:632:PHE:CB	2.62	0.47
11:F:109:SER:HB3	11:F:114:THR:H	1.80	0.47
6:G:191:LEU:HD22	11:F:29:LEU:HD12	1.96	0.47
7:E:53:LYS:HZ3	7:E:53:LYS:CA	2.27	0.47
1:L:171:ILE:HA	1:L:174:ILE:HG22	1.96	0.47
2:I:333:SER:O	2:I:337:TYR:N	2.48	0.47
3:J:501:GLN:N	3:J:501:GLN:CD	2.73	0.47
3:J:1013:VAL:CG2	4:K:425:GLU:OE1	2.62	0.47
8:H:103:TYR:HB3	8:H:111:PHE:HB2	1.96	0.47
10:D:3:ILE:HD12	10:D:90:LEU:HD11	1.96	0.47
3:J:1013:VAL:HG23	4:K:425:GLU:OE2	2.12	0.47
3:J:1018:TRP:HB2	3:J:1079:PRO:HG3	1.97	0.47
3:J:529:LYS:HD2	8:H:43:ALA:HB1	1.96	0.46
9:A:112:VAL:HA	9:A:115:ILE:HG22	1.97	0.46
10:D:7:TRP:HA	10:D:17:PHE:O	2.15	0.46
11:F:156:GLN:HG2	11:F:185:LYS:O	2.15	0.46
3:J:800:CYS:HG	3:J:814:ASP:HA	1.77	0.46
3:J:1124:ARG:NH2	3:J:1150:ASN:O	2.48	0.46
3:J:1268:SER:HA	3:J:1276:ILE:HA	1.97	0.46
7:E:16:ILE:HD12	7:E:202:ILE:HD11	1.97	0.46
1:L:46:ILE:HD12	1:L:46:ILE:HA	1.76	0.46
3:J:478:ASP:HB2	3:J:486:PRO:HG2	1.98	0.46
3:J:655:ARG:O	3:J:815:ILE:HG23	2.15	0.46
6:G:38:THR:HA	8:H:170:ARG:HD3	1.98	0.46

*Continued on next page...*

*Continued from previous page...*

Atom-1	Atom-2	Interatomic distance (Å)	Clash overlap (Å)
6:G:180:LEU:HB3	6:G:199:LEU:HD21	1.96	0.46
3:J:993:ARG:O	3:J:1047:SER:OG	2.33	0.46
6:G:180:LEU:HA	6:G:183:ILE:HG22	1.97	0.46
2:I:307:LYS:O	2:I:311:GLU:N	2.47	0.46
11:C:91:SER:O	11:C:102:THR:OG1	2.34	0.46
3:J:481:ASN:H	3:J:484:MET:HE1	1.81	0.45
3:J:1133:CYS:SG	3:J:1134:ASN:N	2.90	0.45
3:J:590:LYS:NZ	8:H:34:LYS:O	2.42	0.45
3:J:915:TYR:CB	3:J:1102:ARG:NH1	2.79	0.45
2:I:860:ASN:ND2	2:I:966:ARG:O	2.48	0.45
7:E:129:MET:HE2	7:E:129:MET:HB3	1.90	0.45
1:L:16:ILE:HG12	1:L:88:GLY:HA3	1.97	0.45
1:L:39:ASN:HB3	10:D:57:LYS:HD3	1.99	0.45
1:L:25:GLY:O	1:L:126:ASN:ND2	2.49	0.45
1:L:76:ARG:HA	1:L:76:ARG:HD3	1.58	0.45
3:J:500:LEU:H	3:J:500:LEU:HG	1.57	0.45
3:J:1013:VAL:HG22	4:K:425:GLU:CD	2.37	0.45
3:J:1104:PHE:HD1	3:J:1104:PHE:O	1.99	0.45
5:B:47:MET:HE3	11:C:63:ILE:HG12	1.97	0.45
7:E:65:ASN:ND2	7:E:65:ASN:N	2.65	0.45
3:J:1278:GLN:HG2	3:J:1280:ASP:HB2	1.98	0.45
5:B:102:HIS:O	5:B:106:HIS:ND1	2.49	0.45
11:F:167:ILE:HG23	11:F:174:THR:HG23	1.99	0.45
4:K:503:LEU:HB2	4:K:523:ARG:HG3	1.98	0.45
7:E:105:ASP:N	7:E:105:ASP:OD1	2.43	0.45
3:J:481:ASN:OD1	3:J:483:PRO:CD	2.42	0.45
3:J:1089:ASN:ND2	3:J:1092:ASN:ND2	2.64	0.45
3:J:1173:VAL:HG12	3:J:1194:THR:HG23	1.99	0.45
1:L:75:TYR:O	1:L:79:THR:HG23	2.17	0.45
5:B:118:LYS:HE3	5:B:118:LYS:HB2	1.85	0.45
3:J:1092:ASN:O	3:J:1093:THR:C	2.60	0.44
6:G:173:ASP:OD1	6:G:173:ASP:N	2.47	0.44
10:D:21:TRP:HB3	10:D:24:ALA:HA	1.97	0.44
3:J:907:LYS:HD2	3:J:1097:ARG:CB	2.47	0.44
3:J:535:ARG:HH22	8:H:35:GLU:HB2	1.82	0.44
3:J:914:LEU:CB	3:J:1102:ARG:HH22	2.16	0.44
3:J:652:PHE:HD2	3:J:816:ILE:HG22	1.83	0.44
3:J:1104:PHE:O	3:J:1104:PHE:CD1	2.70	0.44
3:J:1181:LYS:HA	3:J:1181:LYS:HD3	1.80	0.44
5:B:146:LEU:HD22	5:B:156:ILE:HG22	2.00	0.44
1:L:46:ILE:HD11	7:E:43:VAL:HG12	2.00	0.44

*Continued on next page...*



*Continued from previous page...*

Atom-1	Atom-2	Interatomic distance (Å)	Clash overlap (Å)
2:I:774:GLU:HB3	2:I:785:LYS:HB3	1.99	0.44
3:J:764:ALA:HB1	3:J:786:ILE:HD11	1.99	0.44
3:J:893:PRO:HG2	3:J:953:THR:HA	2.00	0.44
2:I:464:LYS:HD2	2:I:464:LYS:HA	1.49	0.44
10:D:19:ARG:HH11	10:D:31:THR:HG23	1.82	0.44
10:D:44:LEU:HD13	10:D:44:LEU:HA	1.80	0.44
3:J:1112:GLU:CD	3:J:1112:GLU:C	2.86	0.44
5:B:238:CYS:HB2	5:B:259:SER:HB2	1.99	0.44
7:E:171:ALA:O	7:E:175:ALA:HB2	2.18	0.44
9:A:73:SER:O	9:A:89:GLY:HA2	2.18	0.44
7:E:124:THR:HG22	10:D:67:ILE:HA	1.99	0.43
1:L:89:ALA:HB3	1:L:121:VAL:HG22	2.01	0.43
11:C:147:VAL:O	11:C:151:SER:CB	2.66	0.43
3:J:501:GLN:N	3:J:501:GLN:OE1	2.51	0.43
8:H:88:TYR:OH	8:H:130:MET:SD	2.65	0.43
10:D:115:VAL:HG11	10:D:125:PHE:HZ	1.82	0.43
10:D:127:GLU:O	10:D:128:ASN:HB2	2.18	0.43
5:B:106:HIS:HA	5:B:210:MET:HE1	2.00	0.43
9:A:103:GLU:O	9:A:107:GLN:OE1	2.37	0.43
2:I:745:SER:HA	2:I:757:GLU:HA	1.99	0.43
3:J:1089:ASN:HB3	3:J:1092:ASN:HD21	1.84	0.43
4:K:308:THR:HA	4:K:330:PRO:HA	2.01	0.43
3:J:517:MET:HA	3:J:520:VAL:HG12	2.00	0.43
3:J:754:ILE:O	3:J:804:SER:OG	2.32	0.43
2:I:598:ASP:HA	2:I:603:LYS:HA	2.01	0.43
2:I:768:GLN:O	2:I:791:SER:N	2.52	0.43
2:I:1033:GLY:HA2	2:I:1049:GLN:HA	2.01	0.43
4:K:214:ASN:HA	4:K:236:THR:HA	2.01	0.43
1:L:95:ILE:HD11	1:L:128:SER:HA	2.01	0.42
3:J:1099:TYR:HD1	3:J:1099:TYR:O	2.03	0.42
10:D:133:ARG:HG3	11:C:187:GLU:HG3	2.01	0.42
1:L:41:GLU:H	1:L:41:GLU:HG3	1.40	0.42
3:J:1182:VAL:HG13	3:J:1186:GLU:HB2	2.01	0.42
11:C:60:GLY:HA2	11:C:63:ILE:HG22	2.01	0.42
1:L:8:TYR:CE1	7:E:30:SER:HB2	2.54	0.42
3:J:972:ALA:HA	3:J:980:LEU:HG	2.01	0.42
5:B:108:LEU:HA	5:B:111:ALA:HB2	2.00	0.42
8:H:4:TYR:HE2	8:H:41:LEU:HD22	1.84	0.42
3:J:1010:SER:OG	4:K:423:LYS:CE	2.67	0.42
3:J:1023:MET:HA	3:J:1026:ILE:HG22	2.01	0.42
9:A:123:PRO:HD2	11:C:128:VAL:HG13	2.01	0.42

*Continued on next page...*



*Continued from previous page...*

Atom-1	Atom-2	Interatomic distance (Å)	Clash overlap (Å)
11:F:185:LYS:HE2	11:F:185:LYS:HB2	1.67	0.42
11:C:147:VAL:O	11:C:151:SER:HB3	2.20	0.42
3:J:742:ASP:O	3:J:779:ARG:N	2.52	0.42
7:E:52:PRO:C	7:E:53:LYS:NZ	2.77	0.42
11:F:49:PHE:HA	11:F:52:VAL:HG22	2.01	0.42
8:H:40:ILE:O	8:H:44:SER:OG	2.33	0.42
2:I:863:LYS:NZ	2:I:902:LYS:O	2.53	0.42
3:J:1092:ASN:N	3:J:1092:ASN:ND2	2.67	0.42
1:L:72:GLN:C	1:L:74:ARG:H	2.28	0.42
3:J:486:PRO:O	3:J:487:ARG:C	2.62	0.42
5:B:200:GLU:HA	10:D:141:THR:O	2.20	0.42
11:F:162:TRP:HE1	11:F:177:LYS:HD2	1.85	0.42
2:I:856:LYS:HE3	2:I:856:LYS:HB3	1.86	0.42
4:K:503:LEU:N	4:K:523:ARG:O	2.46	0.42
4:K:248:ILE:O	4:K:253:HIS:N	2.51	0.42
11:F:87:SER:HB2	11:F:105:ILE:HG12	2.02	0.42
11:F:184:LEU:HB3	11:F:185:LYS:H	1.63	0.42
3:J:510:GLN:HA	3:J:513:ILE:HG22	2.01	0.41
5:B:116:LYS:NZ	5:B:212:GLU:OE2	2.45	0.41
7:E:210:LYS:HA	7:E:210:LYS:HD2	1.88	0.41
1:L:13:LEU:HA	1:L:63:LYS:O	2.21	0.41
3:J:616:ILE:HG22	3:J:619:TYR:HE2	1.85	0.41
3:J:862:SER:HA	3:J:992:ARG:HB2	2.01	0.41
7:E:52:PRO:C	7:E:53:LYS:HZ1	2.27	0.41
10:D:51:LEU:O	10:D:55:THR:OG1	2.34	0.41
1:L:87:VAL:HG22	1:L:174:ILE:HD11	2.01	0.41
2:I:303:PHE:O	2:I:307:LYS:N	2.47	0.41
3:J:1103:GLN:O	3:J:1104:PHE:HB3	2.21	0.41
5:B:125:ASN:OD1	11:C:40:GLN:NE2	2.39	0.41
9:A:74:VAL:HA	9:A:88:ILE:O	2.21	0.41
10:D:44:LEU:O	10:D:48:ILE:HG12	2.20	0.41
1:L:169:GLU:OE1	3:J:698:VAL:HG12	2.17	0.41
11:F:84:VAL:O	11:F:87:SER:OG	2.35	0.41
3:J:915:TYR:N	3:J:1102:ARG:HH12	2.16	0.41
11:F:74:ARG:HH21	11:F:98:PHE:HE1	1.68	0.41
1:L:36:ASP:O	1:L:37:GLU:C	2.63	0.41
3:J:655:ARG:HA	3:J:655:ARG:HD2	1.73	0.41
3:J:762:ARG:HB3	3:J:789:LYS:HE3	2.02	0.41
3:J:905:TYR:HA	3:J:908:LYS:HB2	2.02	0.41
6:G:68:GLU:HG3	11:F:63:ILE:HG12	2.03	0.41
3:J:483:PRO:O	3:J:484:MET:SD	2.79	0.41

*Continued on next page...*

Continued from previous page...

Atom-1	Atom-2	Interatomic distance (Å)	Clash overlap (Å)
6:G:100:GLU:OE2	8:H:107:SER:N	2.50	0.41
2:I:332:THR:O	2:I:336:SER:N	2.53	0.41
2:I:982:PHE:HB2	2:I:1075:PHE:HA	2.03	0.41
8:H:5:PHE:HD1	8:H:113:MET:HB2	1.85	0.41
9:A:11:ILE:HB	9:A:85:LYS:HB2	2.02	0.41
9:A:42:ILE:HD12	9:A:42:ILE:HA	1.95	0.41
10:D:127:GLU:HB2	10:D:129:GLU:OE1	2.21	0.41
11:F:53:ASN:HD21	11:F:139:TRP:H	1.69	0.41
3:J:534:LEU:HB3	3:J:561:ILE:HD12	2.03	0.41
3:J:1010:SER:OG	4:K:423:LYS:NZ	2.53	0.41
6:G:53:LYS:HE2	6:G:53:LYS:HB2	1.83	0.41
2:I:273:ASP:O	2:I:277:LEU:N	2.53	0.40
3:J:485:PHE:N	3:J:486:PRO:CD	2.84	0.40
3:J:1002:ILE:HG12	3:J:1164:ILE:HD11	2.03	0.40
4:K:437:SER:HA	4:K:440:PRO:HB3	2.03	0.40
6:G:172:ARG:HH21	8:H:86:ASN:HB3	1.85	0.40
3:J:738:PRO:HG2	3:J:784:PRO:HB2	2.04	0.40
3:J:1098:ILE:CD1	3:J:1099:TYR:CG	2.96	0.40
3:J:1117:MET:HB3	3:J:1117:MET:HE2	1.80	0.40
2:I:336:SER:O	2:I:340:PHE:N	2.54	0.40
3:J:600:ARG:NH1	3:J:603:ASN:OD1	2.45	0.40
9:A:8:VAL:HG12	9:A:88:ILE:HG13	2.03	0.40

There are no symmetry-related clashes.

## 5.3 Torsion angles [i](#)

### 5.3.1 Protein backbone [i](#)

In the following table, the Percentiles column shows the percent Ramachandran outliers of the chain as a percentile score with respect to all PDB entries followed by that with respect to all EM entries.

The Analysed column shows the number of residues for which the backbone conformation was analysed, and the total number of residues.

Mol	Chain	Analysed	Favoured	Allowed	Outliers	Percentiles	
1	L	192/222 (86%)	170 (88%)	17 (9%)	5 (3%)	4	28
2	I	782/1102 (71%)	649 (83%)	120 (15%)	13 (2%)	7	34
3	J	868/1289 (67%)	730 (84%)	129 (15%)	9 (1%)	13	44

Continued on next page...

*Continued from previous page...*

Mol	Chain	Analysed	Favoured	Allowed	Outliers	Percentiles	
4	K	243/560 (43%)	205 (84%)	33 (14%)	5 (2%)	5	32
5	B	191/268 (71%)	172 (90%)	19 (10%)	0	100	100
6	G	198/283 (70%)	181 (91%)	17 (9%)	0	100	100
7	E	155/219 (71%)	140 (90%)	13 (8%)	2 (1%)	10	39
8	H	143/175 (82%)	134 (94%)	9 (6%)	0	100	100
9	A	142/152 (93%)	131 (92%)	11 (8%)	0	100	100
10	D	154/159 (97%)	139 (90%)	14 (9%)	1 (1%)	22	55
11	C	183/193 (95%)	165 (90%)	17 (9%)	1 (0%)	25	58
11	F	181/193 (94%)	162 (90%)	19 (10%)	0	100	100
All	All	3432/4815 (71%)	2978 (87%)	418 (12%)	36 (1%)	16	44

All (36) Ramachandran outliers are listed below:

Mol	Chain	Res	Type
1	L	42	SER
1	L	199	PRO
2	I	346	PRO
2	I	483	PRO
2	I	976	PRO
3	J	956	PRO
4	K	325	PRO
4	K	330	PRO
7	E	53	LYS
10	D	128	ASN
11	C	46	GLU
1	L	38	PHE
1	L	179	SER
2	I	252	PRO
2	I	495	VAL
2	I	980	PRO
2	I	1076	PRO
3	J	486	PRO
2	I	343	VAL
2	I	466	SER
2	I	251	VAL
2	I	735	ILE
3	J	409	LEU
4	K	310	PRO
1	L	48	VAL

*Continued on next page...*

*Continued from previous page...*

Mol	Chain	Res	Type
3	J	666	ASP
3	J	1014	GLU
3	J	1102	ARG
4	K	286	PRO
3	J	672	ILE
3	J	738	PRO
4	K	331	VAL
2	I	1029	ILE
3	J	886	ILE
7	E	68	PRO
2	I	647	VAL

### 5.3.2 Protein sidechains ⓘ

In the following table, the Percentiles column shows the percent sidechain outliers of the chain as a percentile score with respect to all PDB entries followed by that with respect to all EM entries.

The Analysed column shows the number of residues for which the sidechain conformation was analysed, and the total number of residues.

Mol	Chain	Analysed	Rotameric	Outliers	Percentiles	
1	L	152/189 (80%)	123 (81%)	29 (19%)	1	7
2	I	78/1023 (8%)	77 (99%)	1 (1%)	65	76
3	J	594/1213 (49%)	578 (97%)	16 (3%)	40	60
4	K	121/518 (23%)	121 (100%)	0	100	100
5	B	176/248 (71%)	176 (100%)	0	100	100
6	G	179/249 (72%)	179 (100%)	0	100	100
7	E	149/199 (75%)	140 (94%)	9 (6%)	16	41
8	H	127/152 (84%)	126 (99%)	1 (1%)	79	84
9	A	134/142 (94%)	133 (99%)	1 (1%)	81	86
10	D	142/145 (98%)	124 (87%)	18 (13%)	3	19
11	C	170/178 (96%)	170 (100%)	0	100	100
11	F	169/178 (95%)	166 (98%)	3 (2%)	54	71
All	All	2191/4434 (49%)	2113 (96%)	78 (4%)	32	54

All (78) residues with a non-rotameric sidechain are listed below:

Mol	Chain	Res	Type
1	L	38	PHE
1	L	40	ILE
1	L	41	GLU
1	L	42	SER
1	L	44	SER
1	L	45	THR
1	L	46	ILE
1	L	49	GLU
1	L	54	THR
1	L	61	LYS
1	L	63	LYS
1	L	66	ILE
1	L	69	THR
1	L	72	GLN
1	L	73	GLU
1	L	76	ARG
1	L	78	ILE
1	L	105	ASN
1	L	106	HIS
1	L	130	LEU
1	L	133	LEU
1	L	134	ARG
1	L	151	LEU
1	L	153	THR
1	L	154	GLU
1	L	160	SER
1	L	176	GLN
1	L	180	LYS
1	L	182	GLN
2	I	464	LYS
3	J	484	MET
3	J	500	LEU
3	J	501	GLN
3	J	655	ARG
3	J	697	GLU
3	J	698	VAL
3	J	699	PHE
3	J	702	PHE
3	J	1012	GLN
3	J	1093	THR
3	J	1097	ARG
3	J	1099	TYR
3	J	1105	ILE

*Continued on next page...*

*Continued from previous page...*

Mol	Chain	Res	Type
3	J	1106	GLN
3	J	1107	SER
3	J	1113	GLN
7	E	22	THR
7	E	25	GLU
7	E	27	LYS
7	E	28	LEU
7	E	29	ASN
7	E	31	ASN
7	E	53	LYS
7	E	56	GLN
7	E	65	ASN
8	H	12	ASP
9	A	77	MET
10	D	20	GLU
10	D	22	THR
10	D	23	LEU
10	D	26	ASN
10	D	29	SER
10	D	32	ILE
10	D	33	ASN
10	D	34	SER
10	D	35	LYS
10	D	37	ASN
10	D	38	GLU
10	D	39	GLU
10	D	43	LEU
10	D	44	LEU
10	D	137	THR
10	D	138	ARG
10	D	139	LYS
10	D	140	ILE
11	F	183	ILE
11	F	184	LEU
11	F	185	LYS

Sometimes sidechains can be flipped to improve hydrogen bonding and reduce clashes. All (41) such sidechains are listed below:

Mol	Chain	Res	Type
1	L	105	ASN
1	L	148	ASN
1	L	159	ASN

*Continued on next page...*

*Continued from previous page...*

Mol	Chain	Res	Type
1	L	162	ASN
2	I	860	ASN
3	J	530	GLN
3	J	588	GLN
3	J	637	GLN
3	J	660	ASN
3	J	696	GLN
3	J	736	GLN
3	J	817	ASN
3	J	823	ASN
3	J	1006	ASN
3	J	1067	HIS
3	J	1092	ASN
3	J	1103	GLN
3	J	1106	GLN
3	J	1126	HIS
4	K	449	ASN
4	K	486	GLN
4	K	544	ASN
4	K	546	ASN
5	B	102	HIS
5	B	167	GLN
5	B	179	ASN
5	B	263	GLN
6	G	181	GLN
7	E	20	ASN
7	E	23	ASN
7	E	29	ASN
7	E	41	HIS
7	E	65	ASN
7	E	113	ASN
10	D	14	ASN
10	D	33	ASN
10	D	37	ASN
11	F	26	ASN
11	F	53	ASN
11	F	55	HIS
11	F	100	ASN

### 5.3.3 RNA ⓘ

There are no RNA molecules in this entry.

## 5.4 Non-standard residues in protein, DNA, RNA chains [i](#)

There are no non-standard protein/DNA/RNA residues in this entry.

## 5.5 Carbohydrates [i](#)

There are no oligosaccharides in this entry.

## 5.6 Ligand geometry [i](#)

There are no ligands in this entry.

## 5.7 Other polymers [i](#)

There are no such residues in this entry.

## 5.8 Polymer linkage issues [i](#)

There are no chain breaks in this entry.



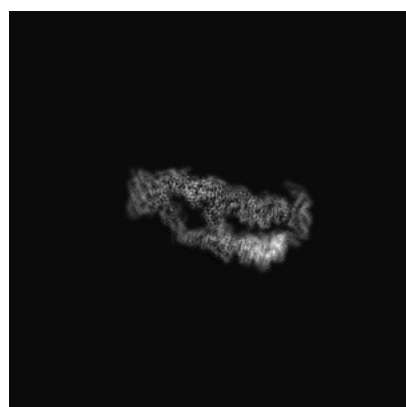
## 6 Map visualisation [i](#)

This section contains visualisations of the EMDB entry EMD-31022. These allow visual inspection of the internal detail of the map and identification of artifacts.

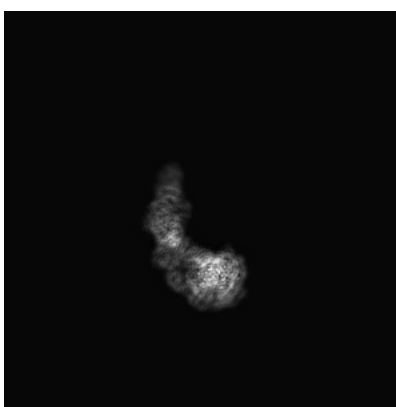
No raw map or half-maps were deposited for this entry and therefore no images, graphs, etc. pertaining to the raw map can be shown.

### 6.1 Orthogonal projections [i](#)

#### 6.1.1 Primary map



X



Y



Z

The images above show the map projected in three orthogonal directions.

### 6.2 Central slices [i](#)

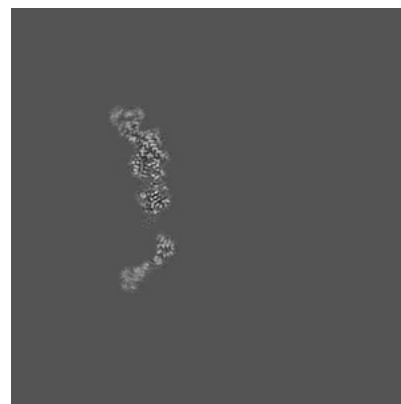
#### 6.2.1 Primary map



X Index: 300



Y Index: 300



Z Index: 300

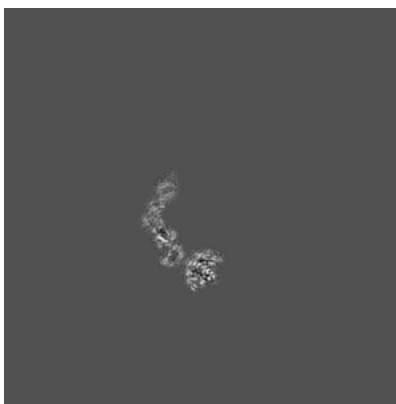
The images above show central slices of the map in three orthogonal directions.

## 6.3 Largest variance slices [i](#)

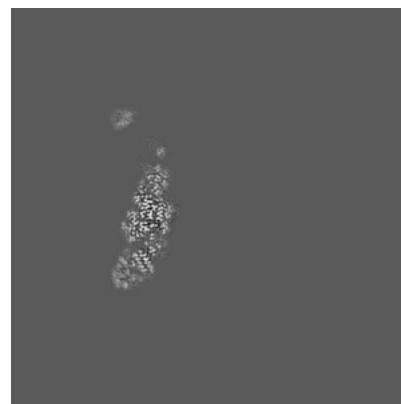
### 6.3.1 Primary map



X Index: 203



Y Index: 378

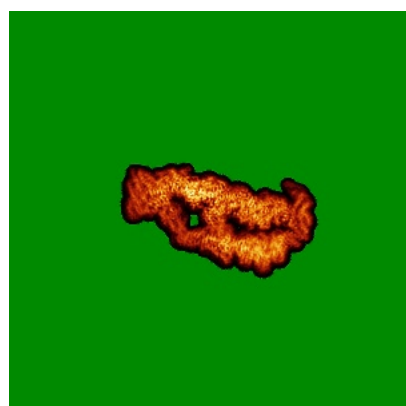


Z Index: 327

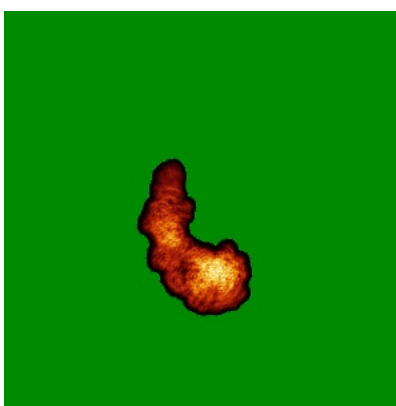
The images above show the largest variance slices of the map in three orthogonal directions.

## 6.4 Orthogonal standard-deviation projections (False-color) [i](#)

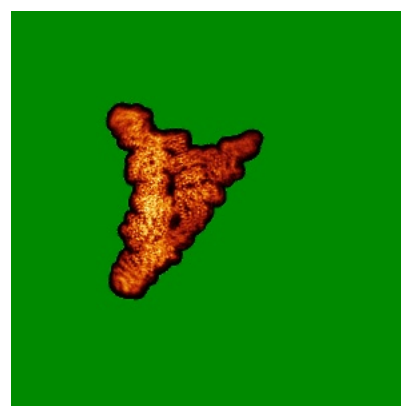
### 6.4.1 Primary map



X



Y



Z

The images above show the map standard deviation projections with false color in three orthogonal directions. Minimum values are shown in green, max in blue, and dark to light orange shades represent small to large values respectively.

## 6.5 Orthogonal surface views [i](#)

### 6.5.1 Primary map



The images above show the 3D surface view of the map at the recommended contour level 0.009. These images, in conjunction with the slice images, may facilitate assessment of whether an appropriate contour level has been provided.

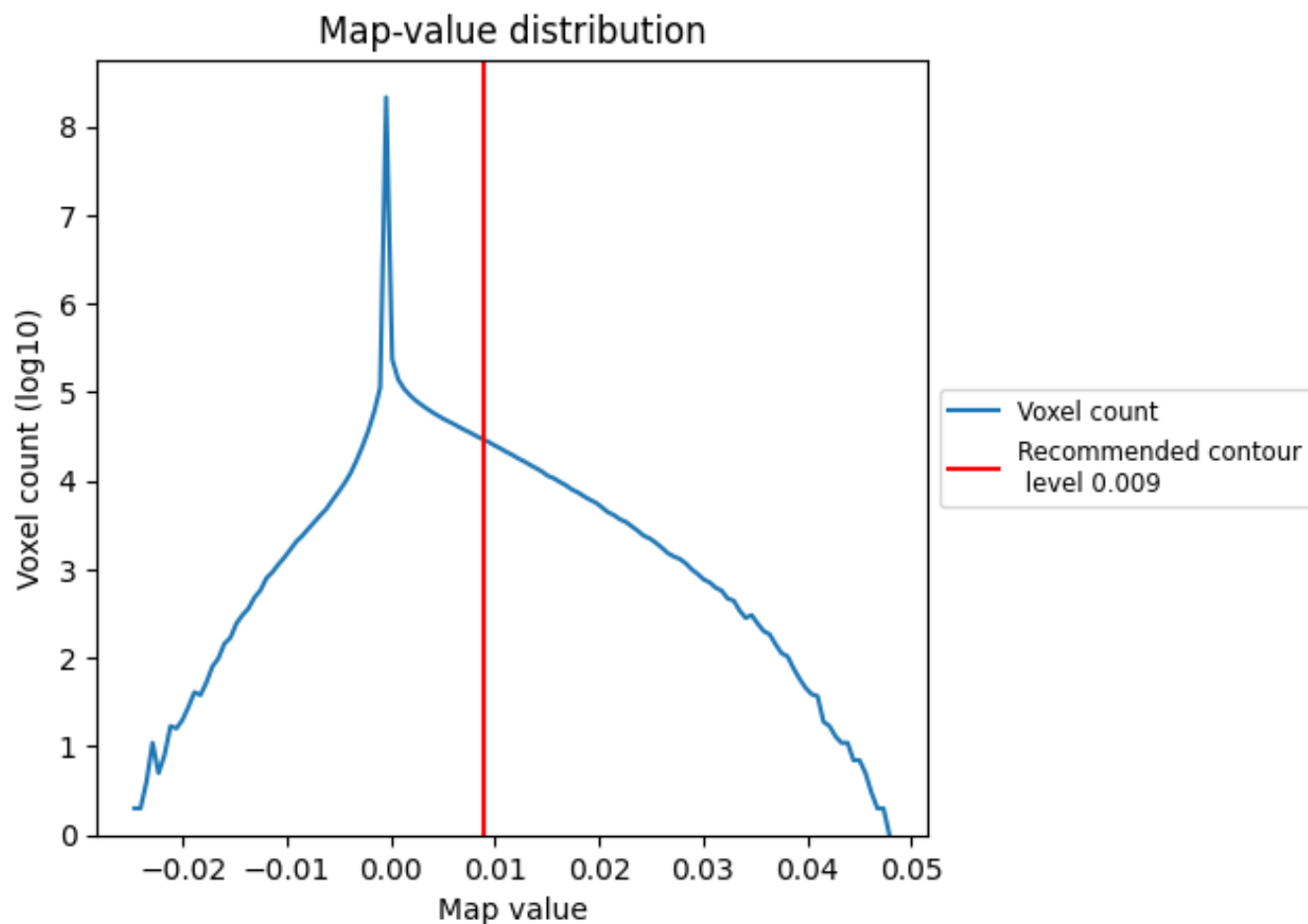
## 6.6 Mask visualisation [i](#)

This section was not generated. No masks/segmentation were deposited.

## 7 Map analysis [i](#)

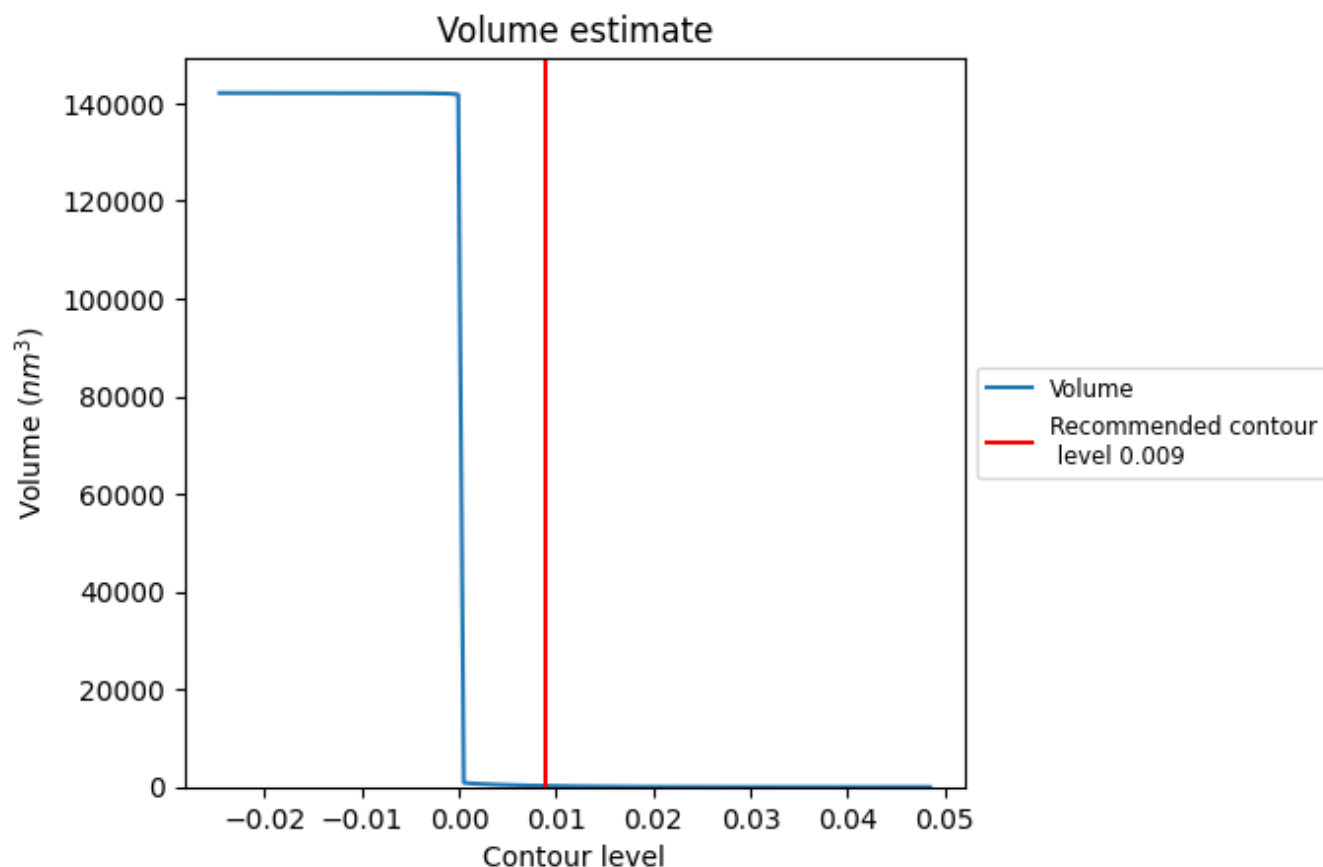
This section contains the results of statistical analysis of the map.

### 7.1 Map-value distribution [i](#)



The map-value distribution is plotted in 128 intervals along the x-axis. The y-axis is logarithmic. A spike in this graph at zero usually indicates that the volume has been masked.

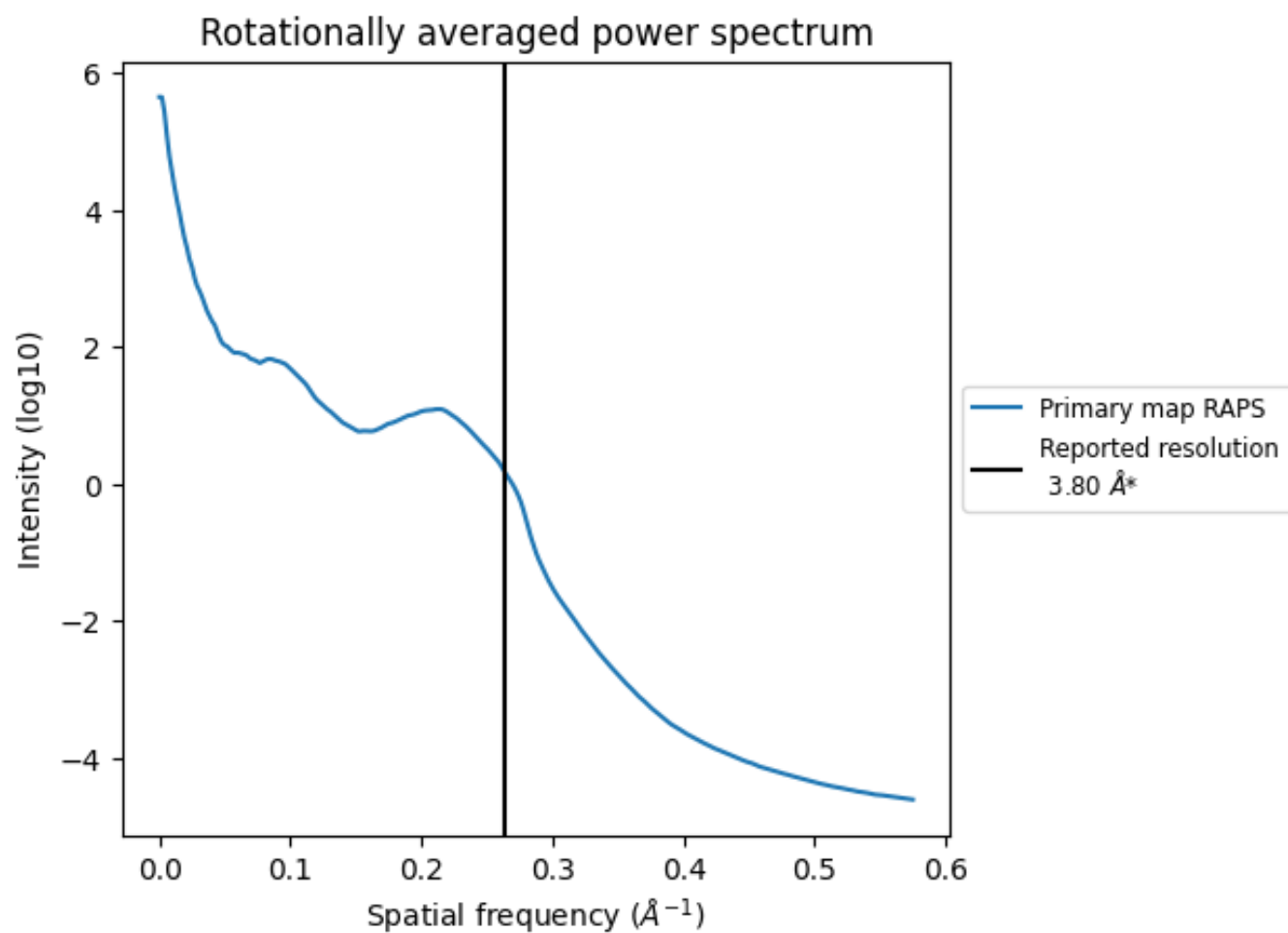
## 7.2 Volume estimate [i](#)



The volume at the recommended contour level is 220 nm<sup>3</sup>; this corresponds to an approximate mass of 198 kDa.

The volume estimate graph shows how the enclosed volume varies with the contour level. The recommended contour level is shown as a vertical line and the intersection between the line and the curve gives the volume of the enclosed surface at the given level.

### 7.3 Rotationally averaged power spectrum ⓘ



\*Reported resolution corresponds to spatial frequency of 0.263 Å<sup>-1</sup>

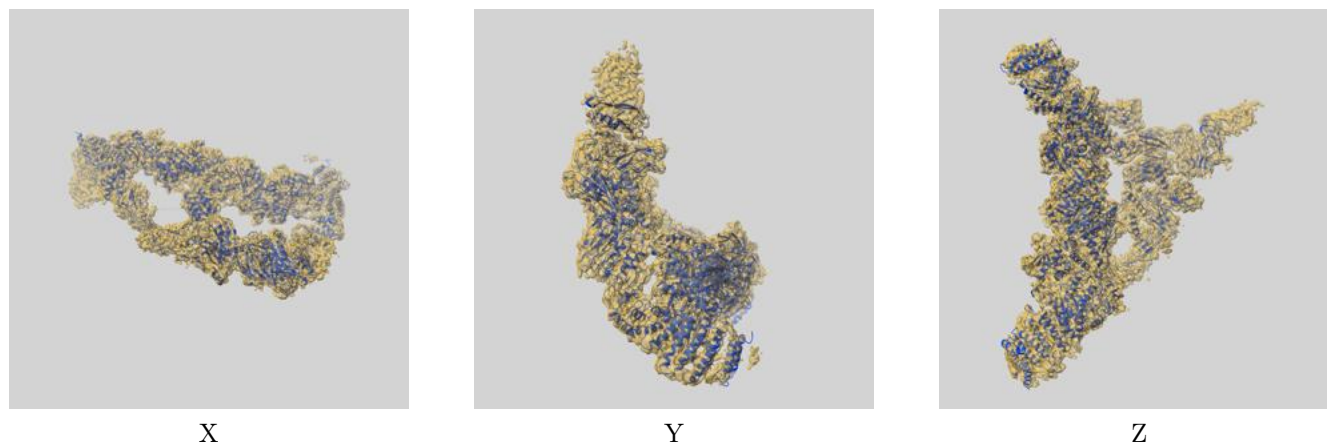
## 8 Fourier-Shell correlation

This section was not generated. No FSC curve or half-maps provided.

## 9 Map-model fit [i](#)

This section contains information regarding the fit between EMDB map EMD-31022 and PDB model 7E8T. Per-residue inclusion information can be found in section [3](#) on page [6](#).

### 9.1 Map-model overlay [i](#)



The images above show the 3D surface view of the map at the recommended contour level 0.009 at 50% transparency in yellow overlaid with a ribbon representation of the model coloured in blue. These images allow for the visual assessment of the quality of fit between the atomic model and the map.

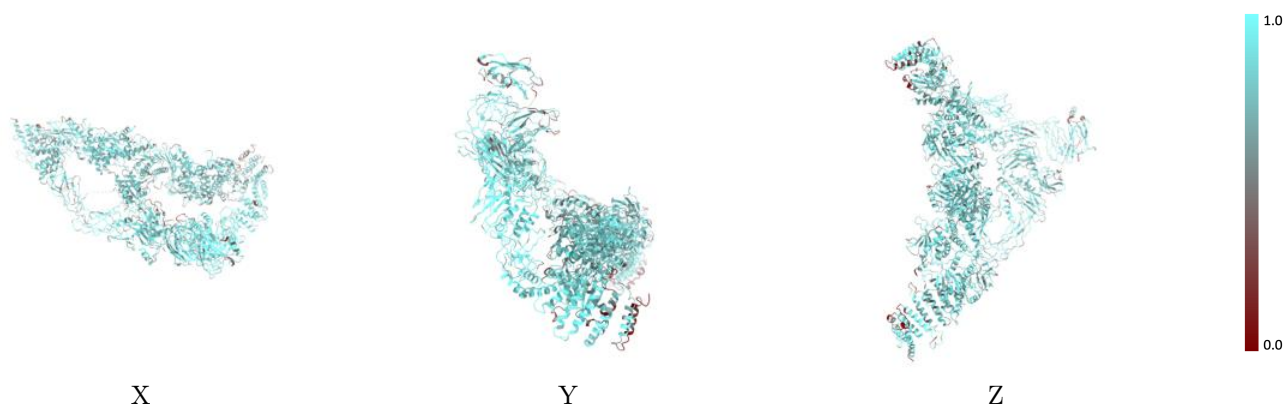


## 9.2 Q-score mapped to coordinate model [i](#)



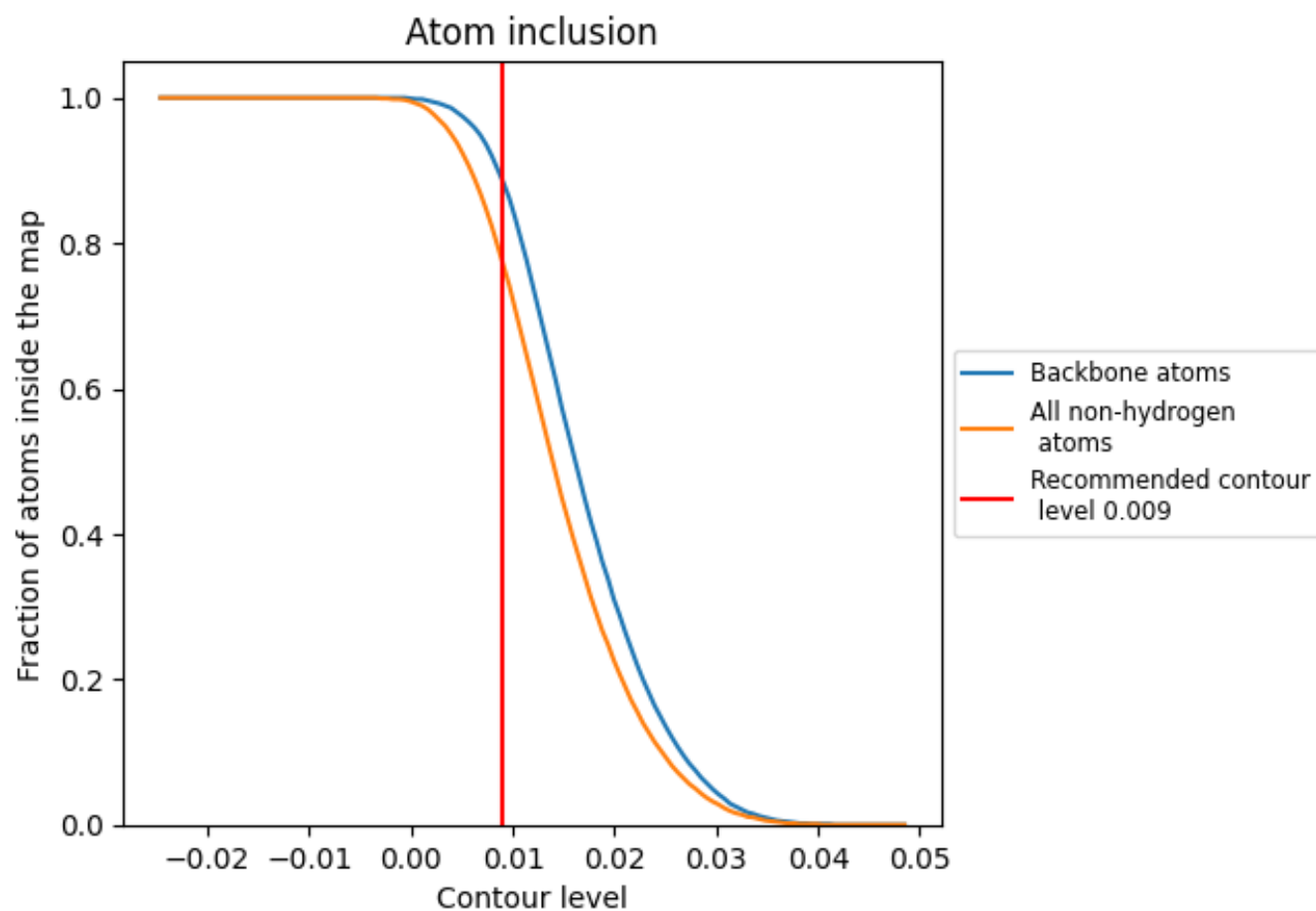
The images above show the model with each residue coloured according to its Q-score. This shows their resolvability in the map with higher Q-score values reflecting better resolvability. Please note: Q-score is calculating the resolvability of atoms, and thus high values are only expected at resolutions at which atoms can be resolved. Low Q-score values may therefore be expected for many entries.

## 9.3 Atom inclusion mapped to coordinate model [i](#)



The images above show the model with each residue coloured according to its atom inclusion. This shows to what extent they are inside the map at the recommended contour level (0.009).

## 9.4 Atom inclusion [i](#)



At the recommended contour level, 89% of all backbone atoms, 77% of all non-hydrogen atoms, are inside the map.

9.5 Map-model fit summary ⓘ

The table lists the average atom inclusion at the recommended contour level (0.009) and Q-score for the entire model and for each chain.

Chain	Atom inclusion	Q-score
All	<div><div></div>0.7730</div>	<div><div></div>0.3940</div>
A	<div><div></div>0.6210</div>	<div><div></div>0.3760</div>
B	<div><div></div>0.7400</div>	<div><div></div>0.3940</div>
C	<div><div></div>0.7870</div>	<div><div></div>0.4330</div>
D	<div><div></div>0.8120</div>	<div><div></div>0.4220</div>
E	<div><div></div>0.8110</div>	<div><div></div>0.4520</div>
F	<div><div></div>0.7990</div>	<div><div></div>0.4340</div>
G	<div><div></div>0.8050</div>	<div><div></div>0.4390</div>
H	<div><div></div>0.8030</div>	<div><div></div>0.4210</div>
I	<div><div></div>0.8460</div>	<div><div></div>0.3710</div>
J	<div><div></div>0.7530</div>	<div><div></div>0.3700</div>
K	<div><div></div>0.7050</div>	<div><div></div>0.3390</div>
L	<div><div></div>0.7170</div>	<div><div></div>0.4070</div>

1.0

0.0

<0.0